



Full wwPDB X-ray Structure Validation Report ⓘ

Mar 16, 2026 – 03:15 PM UTC

PDB ID : 9Z6C / pdb_00009z6c
Title : Crystal structure of SARS-CoV-2 PLpro in complex with compound 14
Authors : Pemberton, O.A.; Ng, T.I.
Deposited on : 2025-11-14
Resolution : 2.06 Å(reported)

This is a Full wwPDB X-ray Structure Validation Report for a publicly released PDB entry.

We welcome your comments at validation@mail.wwpdb.org

A user guide is available at

<https://www.wwpdb.org/validation/2017/XrayValidationReportHelp>

with specific help available everywhere you see the ⓘ symbol.

The types of validation reports are described at

<http://www.wwpdb.org/validation/2017/FAQs#types>.

The following versions of software and data (see [references ⓘ](#)) were used in the production of this report:

MolProbity	:	4-5-2 with Phenix2.0
Mogul	:	2022.3.0, CSD as543be (2022)
Xtriage (Phenix)	:	2.0
EDS	:	3.0
Buster-report	:	wwPDB partial adaption of 1.1.7 (2018)
Percentile statistics	:	20250101.v01 (using entries in the PDB archive January 1st 2025)
CCP4	:	9.0.010 (Gargrove)
Density-Fitness	:	1.0.12
Ideal geometry (proteins)	:	Engh & Huber (2001)
Ideal geometry (DNA, RNA)	:	Parkinson et al. (1996)
Validation Pipeline (wwPDB-VP)	:	2.49

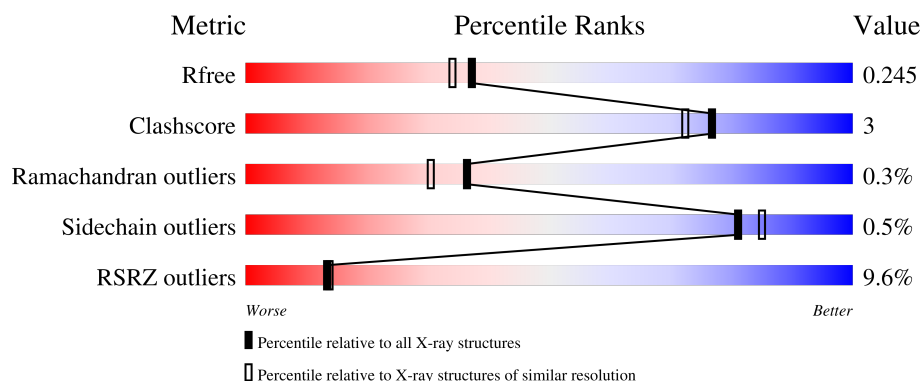
1 Overall quality at a glance

The following experimental techniques were used to determine the structure:

X-RAY DIFFRACTION

The reported resolution of this entry is 2.06 Å.

Percentile scores (ranging between 0-100) for global validation metrics of the entry are shown in the following graphic. The table shows the number of entries on which the scores are based.



Metric	Whole archive (#Entries)	Similar resolution (#Entries, resolution range(Å))
R_{free}	180053	3774 (2.08-2.04)
Clashscore	190562	3883 (2.08-2.04)
Ramachandran outliers	187476	3860 (2.08-2.04)
Sidechain outliers	187428	3860 (2.08-2.04)
RSRZ outliers	180081	3775 (2.08-2.04)

The table below summarises the geometric issues observed across the polymeric chains and their fit to the electron density. The red, orange, yellow and green segments of the lower bar indicate the fraction of residues that contain outliers for ≥ 3 , 2, 1 and 0 types of geometric quality criteria respectively. A grey segment represents the fraction of residues that are not modelled. The numeric value for each fraction is indicated below the corresponding segment, with a dot representing fractions $\leq 5\%$. The upper red bar (where present) indicates the fraction of residues that have poor fit to the electron density. The numeric value is given above the bar.

Mol	Chain	Length	Quality of chain
1	A	319	<div> <div>9%</div> <div>91%</div> <div>8%</div> </div>
1	B	319	<div> <div>10%</div> <div>92%</div> <div>8%</div> </div>

2 Entry composition [i](#)

There are 5 unique types of molecules in this entry. The entry contains 5312 atoms, of which 0 are hydrogens and 0 are deuteriums.

In the tables below, the ZeroOcc column contains the number of atoms modelled with zero occupancy, the AltConf column contains the number of residues with at least one atom in alternate conformation and the Trace column contains the number of residues modelled with at most 2 atoms.

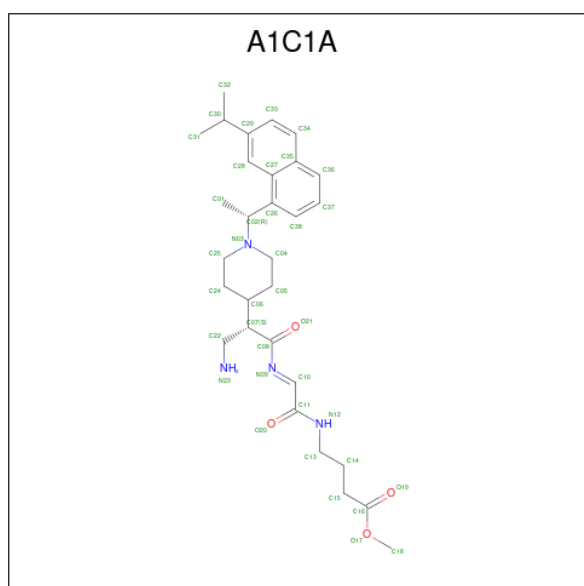
- Molecule 1 is a protein called Papain-like protease nsp3.

Mol	Chain	Residues	Atoms					ZeroOcc	AltConf	Trace
1	A	317	Total	C	N	O	S	0	0	0
			2514	1601	415	479	19			
1	B	317	Total	C	N	O	S	0	0	0
			2514	1601	415	479	19			

There are 2 discrepancies between the modelled and reference sequences:

Chain	Residue	Modelled	Actual	Comment	Reference
A	0	ALA	-	expression tag	UNP P0DTD1
B	0	ALA	-	expression tag	UNP P0DTD1

- Molecule 2 is methyl 4-{[(2E)-2-{[(2S)-3-amino-2-(1-{(1R)-1-[7-(propan-2-yl)naphthalen-1-yl]ethyl}piperidin-4-yl)propanoyl]imino}acetyl]amino}butanoate (CCD ID: A1C1A) (formula: C₃₀H₄₂N₄O₄) (labeled as "Ligand of Interest" by depositor).



Mol	Chain	Residues	Atoms				ZeroOcc	AltConf
2	A	1	Total	C	N	O	0	0
			38	30	4	4		
2	B	1	Total	C	N	O	0	0
			38	30	4	4		

- Molecule 3 is CHLORIDE ION (CCD ID: CL) (formula: Cl).

Mol	Chain	Residues	Atoms		ZeroOcc	AltConf
3	A	1	Total	Cl	0	0
			1	1		
3	B	1	Total	Cl	0	0
			1	1		

- Molecule 4 is ZINC ION (CCD ID: ZN) (formula: Zn).

Mol	Chain	Residues	Atoms		ZeroOcc	AltConf
4	A	1	Total	Zn	0	0
			1	1		
4	B	1	Total	Zn	0	0
			1	1		

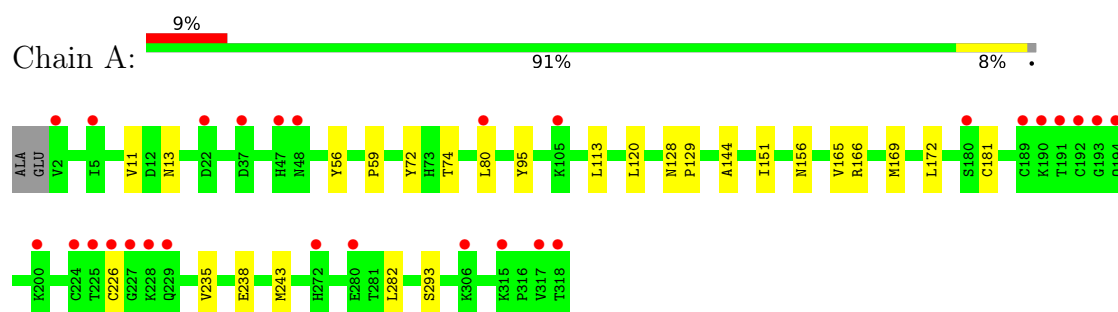
- Molecule 5 is water.

Mol	Chain	Residues	Atoms		ZeroOcc	AltConf
5	A	93	Total	O	0	0
			93	93		
5	B	111	Total	O	0	0
			111	111		

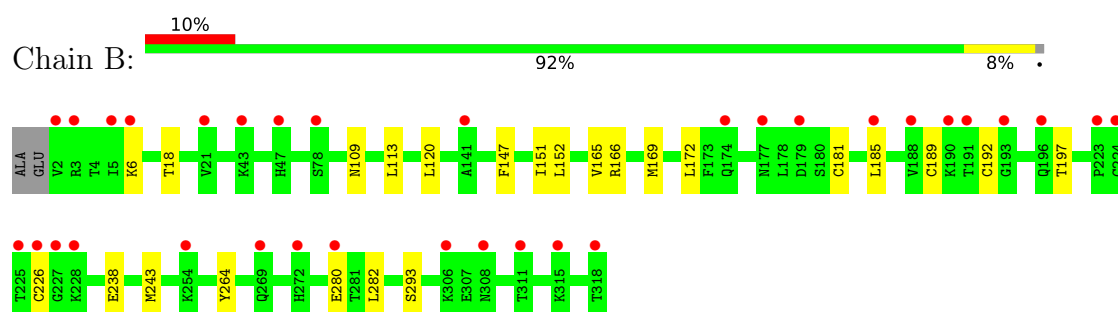
3 Residue-property plots

These plots are drawn for all protein, RNA, DNA and oligosaccharide chains in the entry. The first graphic for a chain summarises the proportions of the various outlier classes displayed in the second graphic. The second graphic shows the sequence view annotated by issues in geometry and electron density. Residues are color-coded according to the number of geometric quality criteria for which they contain at least one outlier: green = 0, yellow = 1, orange = 2 and red = 3 or more. A red dot above a residue indicates a poor fit to the electron density ($RSRZ > 2$). Stretches of 2 or more consecutive residues without any outlier are shown as a green connector. Residues present in the sample, but not in the model, are shown in grey.

- Molecule 1: Papain-like protease nsp3



- Molecule 1: Papain-like protease nsp3



4 Data and refinement statistics

Property	Value	Source
Space group	P 21 21 2	Depositor
Cell constants a, b, c, α , β , γ	137.26Å 161.63Å 56.31Å 90.00° 90.00° 90.00°	Depositor
Resolution (Å)	69.64 – 2.06 69.64 – 2.06	Depositor EDS
% Data completeness (in resolution range)	98.2 (69.64-2.06) 98.3 (69.64-2.06)	Depositor EDS
R_{merge}	0.23	Depositor
R_{sym}	(Not available)	Depositor
$\langle I/\sigma(I) \rangle$ ¹	1.43 (at 2.07Å)	Xtriage
Refinement program	PHENIX 1.21.2_5419	Depositor
R, R_{free}	0.232 , 0.247 0.231 , 0.245	Depositor DCC
R_{free} test set	2000 reflections (2.60%)	wwPDB-VP
Wilson B-factor (Å ²)	40.1	Xtriage
Anisotropy	0.384	Xtriage
Bulk solvent k_{sol} (e/Å ³), B_{sol} (Å ²)	0.37 , 34.4	EDS
L-test for twinning ²	$\langle L \rangle = 0.49$, $\langle L^2 \rangle = 0.32$	Xtriage
Estimated twinning fraction	No twinning to report.	Xtriage
F_o, F_c correlation	0.95	EDS
Total number of atoms	5312	wwPDB-VP
Average B, all atoms (Å ²)	45.0	wwPDB-VP

Xtriage's analysis on translational NCS is as follows: *The largest off-origin peak in the Patterson function is 4.03% of the height of the origin peak. No significant pseudotranslation is detected.*

¹Intensities estimated from amplitudes.

²Theoretical values of $\langle |L| \rangle$, $\langle L^2 \rangle$ for acentric reflections are 0.5, 0.333 respectively for untwinned datasets, and 0.375, 0.2 for perfectly twinned datasets.

5 Model quality

5.1 Standard geometry

Bond lengths and bond angles in the following residue types are not validated in this section: ZN, A1C1A, CL

The Z score for a bond length (or angle) is the number of standard deviations the observed value is removed from the expected value. A bond length (or angle) with $|Z| > 5$ is considered an outlier worth inspection. RMSZ is the root-mean-square of all Z scores of the bond lengths (or angles).

Mol	Chain	Bond lengths		Bond angles	
		RMSZ	$\# Z > 5$	RMSZ	$\# Z > 5$
1	A	0.10	0/2574	0.25	0/3493
1	B	0.14	0/2574	0.28	0/3493
All	All	0.12	0/5148	0.27	0/6986

There are no bond length outliers.

There are no bond angle outliers.

There are no chirality outliers.

There are no planarity outliers.

5.2 Too-close contacts

In the following table, the Non-H and H(model) columns list the number of non-hydrogen atoms and hydrogen atoms in the chain respectively. The H(added) column lists the number of hydrogen atoms added and optimized by MolProbity. The Clashes column lists the number of clashes within the asymmetric unit, whereas Symm-Clashes lists symmetry-related clashes.

Mol	Chain	Non-H	H(model)	H(added)	Clashes	Symm-Clashes
1	A	2514	0	2460	12	0
1	B	2514	0	2460	15	0
2	A	38	0	0	0	0
2	B	38	0	0	5	0
3	A	1	0	0	0	0
3	B	1	0	0	0	0
4	A	1	0	0	0	0
4	B	1	0	0	0	0
5	A	93	0	0	0	0
5	B	111	0	0	1	0
All	All	5312	0	4920	29	0

The all-atom clashscore is defined as the number of clashes found per 1000 atoms (including hydrogen atoms). The all-atom clashscore for this structure is 3.

All (29) close contacts within the same asymmetric unit are listed below, sorted by their clash magnitude.

Atom-1	Atom-2	Interatomic distance (Å)	Clash overlap (Å)
1:B:109:ASN:OD1	2:B:401:A1C1A:C18	2.22	0.88
1:B:264:TYR:CZ	2:B:401:A1C1A:C25	2.73	0.71
1:A:120:LEU:HD11	1:A:172:LEU:HD13	1.84	0.59
1:A:59:PRO:HD3	1:A:80:LEU:HD12	1.86	0.57
1:B:282:LEU:HB2	1:B:293:SER:O	2.06	0.56
1:B:120:LEU:HD11	1:B:172:LEU:HD13	1.90	0.53
1:A:282:LEU:HB2	1:A:293:SER:O	2.09	0.53
1:B:264:TYR:CE1	2:B:401:A1C1A:C25	2.92	0.52
1:B:166:ARG:HA	1:B:243:MET:HE1	1.92	0.52
1:A:151:ILE:HG12	1:A:172:LEU:HD21	1.92	0.51
1:B:6:LYS:HD3	1:B:18:THR:HG23	1.93	0.51
1:B:181:CYS:HA	1:B:238:GLU:O	2.10	0.51
2:B:401:A1C1A:C01	5:B:530:HOH:O	2.59	0.49
1:A:166:ARG:HA	1:A:243:MET:HE1	1.94	0.48
1:A:181:CYS:HA	1:A:238:GLU:O	2.13	0.48
1:A:11:VAL:HB	1:A:80:LEU:HD11	1.95	0.48
1:B:189:CYS:HB3	1:B:192:CYS:HB2	1.96	0.48
1:B:113:LEU:HD11	1:B:152:LEU:HD21	1.96	0.46
1:B:151:ILE:HG12	1:B:172:LEU:HD21	1.98	0.46
1:B:165:VAL:O	1:B:169:MET:HG2	2.16	0.46
2:B:401:A1C1A:O21	2:B:401:A1C1A:N23	2.49	0.45
1:B:185:LEU:HG	1:B:197:THR:HB	1.99	0.44
1:A:13:ASN:HB2	1:A:56:TYR:OH	2.19	0.43
1:A:165:VAL:O	1:A:169:MET:HG2	2.20	0.41
1:B:280:GLU:H	1:B:280:GLU:CD	2.27	0.41
1:A:95:TYR:CD1	1:A:144:ALA:HB3	2.54	0.41
1:A:72:TYR:HB2	1:A:74:THR:HG22	2.03	0.41
1:B:147:PHE:CE2	1:B:151:ILE:HD11	2.56	0.41
1:A:128:ASN:HB2	1:A:129:PRO:HD3	2.04	0.40

There are no symmetry-related clashes.

5.3 Torsion angles

5.3.1 Protein backbone

In the following table, the Percentiles column shows the percent Ramachandran outliers of the chain as a percentile score with respect to all X-ray entries followed by that with respect to entries of similar resolution.

The Analysed column shows the number of residues for which the backbone conformation was analysed, and the total number of residues.

Mol	Chain	Analysed	Favoured	Allowed	Outliers	Percentiles	
1	A	315/319 (99%)	304 (96%)	10 (3%)	1 (0%)	36	30
1	B	315/319 (99%)	305 (97%)	9 (3%)	1 (0%)	36	30
All	All	630/638 (99%)	609 (97%)	19 (3%)	2 (0%)	36	30

All (2) Ramachandran outliers are listed below:

Mol	Chain	Res	Type
1	B	226	CYS
1	A	226	CYS

5.3.2 Protein sidechains

In the following table, the Percentiles column shows the percent sidechain outliers of the chain as a percentile score with respect to all X-ray entries followed by that with respect to entries of similar resolution.

The Analysed column shows the number of residues for which the sidechain conformation was analysed, and the total number of residues.

Mol	Chain	Analysed	Rotameric	Outliers	Percentiles	
1	A	277/278 (100%)	274 (99%)	3 (1%)	65	68
1	B	277/278 (100%)	277 (100%)	0	100	100
All	All	554/556 (100%)	551 (100%)	3 (0%)	81	85

All (3) residues with a non-rotameric sidechain are listed below:

Mol	Chain	Res	Type
1	A	113	LEU
1	A	156	ASN
1	A	235	VAL

Sometimes sidechains can be flipped to improve hydrogen bonding and reduce clashes. All (6) such sidechains are listed below:

Mol	Chain	Res	Type
1	A	146	ASN
1	A	175	HIS
1	A	215	GLN
1	B	146	ASN
1	B	175	HIS
1	B	195	GLN

5.3.3 RNA ⓘ

There are no RNA molecules in this entry.

5.4 Non-standard residues in protein, DNA, RNA chains ⓘ

There are no non-standard protein/DNA/RNA residues in this entry.

5.5 Carbohydrates ⓘ

There are no oligosaccharides in this entry.

5.6 Ligand geometry ⓘ

Of 6 ligands modelled in this entry, 4 are monoatomic - leaving 2 for Mogul analysis.

In the following table, the Counts columns list the number of bonds (or angles) for which Mogul statistics could be retrieved, the number of bonds (or angles) that are observed in the model and the number of bonds (or angles) that are defined in the Chemical Component Dictionary. The Link column lists molecule types, if any, to which the group is linked. The Z score for a bond length (or angle) is the number of standard deviations the observed value is removed from the expected value. A bond length (or angle) with $|Z| > 2$ is considered an outlier worth inspection. RMSZ is the root-mean-square of all Z scores of the bond lengths (or angles).

Mol	Type	Chain	Res	Link	Bond lengths			Bond angles		
					Counts	RMSZ	$\# Z > 2$	Counts	RMSZ	$\# Z > 2$
2	A1C1A	B	401	-	37,40,40	3.75	15 (40%)	46,54,54	1.83	9 (19%)
2	A1C1A	A	401	1	37,40,40	3.76	13 (35%)	46,54,54	1.65	8 (17%)

In the following table, the Chirals column lists the number of chiral outliers, the number of chiral centers analysed, the number of these observed in the model and the number defined in the Chemical Component Dictionary. Similar counts are reported in the Torsion and Rings columns.

'-' means no outliers of that kind were identified.

Mol	Type	Chain	Res	Link	Chirals	Torsions	Rings
2	A1C1A	B	401	-	-	12/34/46/46	0/3/3/3
2	A1C1A	A	401	1	-	11/34/46/46	0/3/3/3

All (28) bond length outliers are listed below:

Mol	Chain	Res	Type	Atoms	Z	Observed(Å)	Ideal(Å)
2	A	401	A1C1A	C10-N09	14.31	1.47	1.29
2	B	401	A1C1A	C10-N09	13.90	1.46	1.29
2	B	401	A1C1A	C26-C02	9.22	1.63	1.52
2	A	401	A1C1A	C26-C02	8.63	1.62	1.52
2	A	401	A1C1A	C02-N03	-7.97	1.29	1.48
2	B	401	A1C1A	C02-N03	-7.82	1.30	1.48
2	A	401	A1C1A	C08-N09	6.58	1.47	1.35
2	B	401	A1C1A	C08-N09	6.27	1.46	1.35
2	A	401	A1C1A	C11-N12	5.90	1.46	1.34
2	B	401	A1C1A	C11-N12	5.72	1.46	1.34
2	B	401	A1C1A	C24-C06	-4.40	1.42	1.53
2	A	401	A1C1A	C05-C06	-4.29	1.43	1.53
2	A	401	A1C1A	C24-C06	-4.02	1.43	1.53
2	B	401	A1C1A	C05-C06	-3.90	1.44	1.53
2	B	401	A1C1A	C01-C02	3.76	1.61	1.52
2	A	401	A1C1A	C01-C02	3.73	1.60	1.52
2	B	401	A1C1A	C27-C35	-3.33	1.36	1.43
2	B	401	A1C1A	O20-C11	-3.26	1.18	1.24
2	A	401	A1C1A	C27-C35	-3.01	1.37	1.43
2	B	401	A1C1A	O21-C08	-2.88	1.18	1.23
2	A	401	A1C1A	O20-C11	-2.83	1.19	1.24
2	B	401	A1C1A	C25-N03	-2.58	1.42	1.47
2	A	401	A1C1A	O17-C16	2.56	1.40	1.33
2	A	401	A1C1A	O21-C08	-2.55	1.18	1.23
2	B	401	A1C1A	O17-C16	2.34	1.40	1.33
2	B	401	A1C1A	O17-C18	-2.06	1.40	1.45
2	B	401	A1C1A	C04-N03	-2.05	1.43	1.47
2	A	401	A1C1A	O17-C18	-2.02	1.40	1.45

All (17) bond angle outliers are listed below:

Mol	Chain	Res	Type	Atoms	Z	Observed(°)	Ideal(°)
2	B	401	A1C1A	C02-C26-C27	6.01	127.38	119.99
2	A	401	A1C1A	C02-C26-C27	5.17	126.35	119.99
2	B	401	A1C1A	C38-C26-C02	-4.91	114.79	120.90

Continued on next page...

Continued from previous page...

Mol	Chain	Res	Type	Atoms	Z	Observed(°)	Ideal(°)
2	A	401	A1C1A	C38-C26-C02	-4.75	114.99	120.90
2	B	401	A1C1A	C24-C06-C07	-4.75	105.05	112.03
2	B	401	A1C1A	O21-C08-N09	-3.64	117.81	125.79
2	A	401	A1C1A	C22-C07-C06	-3.28	109.62	113.94
2	A	401	A1C1A	O21-C08-N09	-3.21	118.75	125.79
2	A	401	A1C1A	C05-C04-N03	2.44	115.18	111.42
2	B	401	A1C1A	C28-C29-C30	-2.43	118.36	121.49
2	A	401	A1C1A	C25-N03-C04	2.40	113.70	109.13
2	B	401	A1C1A	C22-C07-C06	-2.30	110.92	113.94
2	B	401	A1C1A	C01-C02-N03	-2.07	107.91	112.46
2	B	401	A1C1A	O17-C16-C15	2.06	119.91	112.14
2	A	401	A1C1A	C05-C06-C07	-2.05	109.01	112.03
2	B	401	A1C1A	C36-C35-C34	-2.01	118.41	123.01
2	A	401	A1C1A	O17-C16-C15	2.01	119.72	112.14

There are no chirality outliers.

All (23) torsion outliers are listed below:

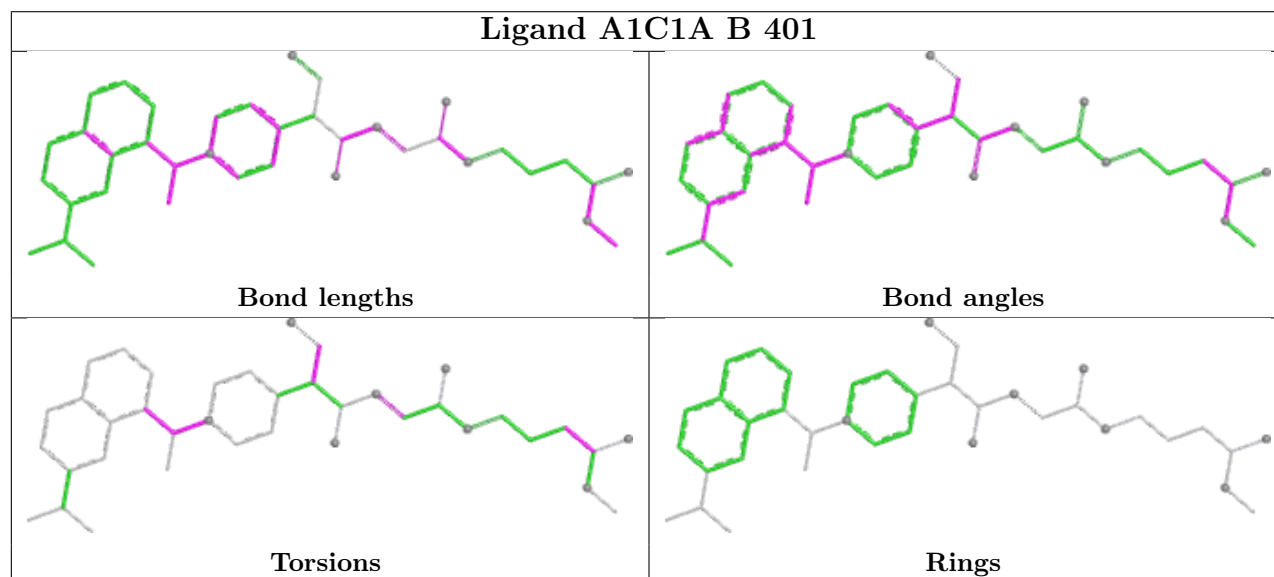
Mol	Chain	Res	Type	Atoms
2	A	401	A1C1A	C08-C07-C22-N23
2	A	401	A1C1A	C01-C02-C26-C27
2	A	401	A1C1A	C26-C02-N03-C04
2	A	401	A1C1A	C26-C02-N03-C25
2	A	401	A1C1A	C01-C02-N03-C04
2	A	401	A1C1A	C01-C02-N03-C25
2	B	401	A1C1A	C11-C10-N09-C08
2	B	401	A1C1A	C08-C07-C22-N23
2	B	401	A1C1A	C01-C02-C26-C27
2	B	401	A1C1A	C01-C02-C26-C38
2	B	401	A1C1A	C26-C02-N03-C04
2	B	401	A1C1A	C26-C02-N03-C25
2	B	401	A1C1A	C01-C02-N03-C04
2	B	401	A1C1A	C01-C02-N03-C25
2	A	401	A1C1A	N12-C13-C14-C15
2	A	401	A1C1A	C15-C16-O17-C18
2	A	401	A1C1A	C13-C14-C15-C16
2	A	401	A1C1A	C01-C02-C26-C38
2	A	401	A1C1A	O19-C16-O17-C18
2	B	401	A1C1A	N03-C02-C26-C27
2	B	401	A1C1A	C14-C15-C16-O17
2	B	401	A1C1A	N03-C02-C26-C38
2	B	401	A1C1A	C06-C07-C22-N23

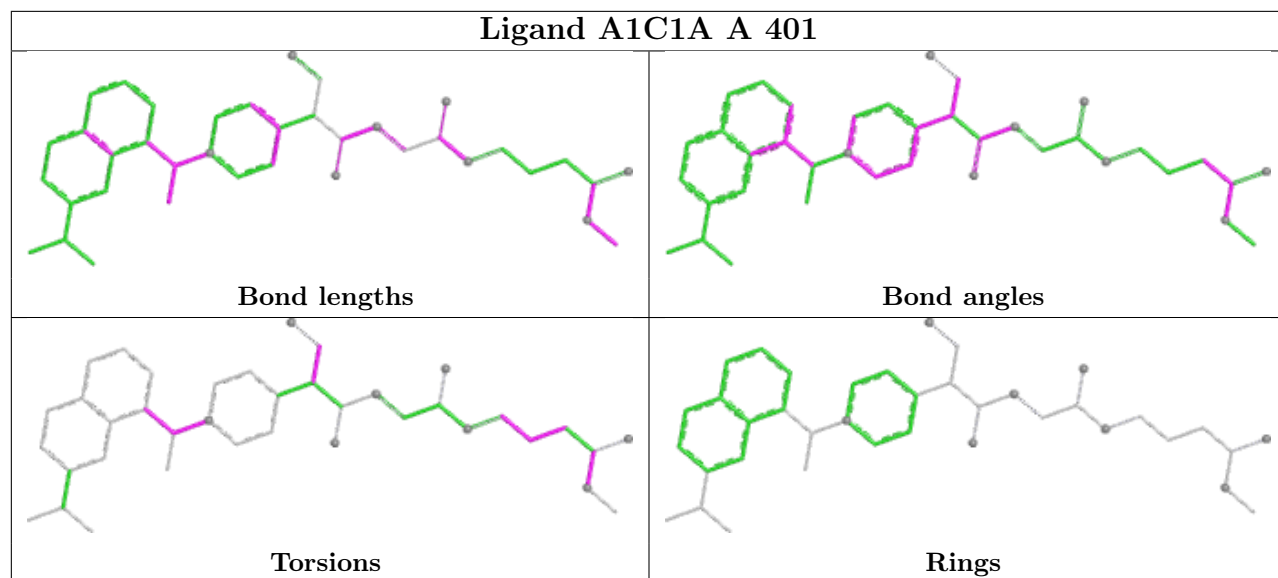
There are no ring outliers.

1 monomer is involved in 5 short contacts:

Mol	Chain	Res	Type	Clashes	Symm-Clashes
2	B	401	A1C1A	5	0

The following is a two-dimensional graphical depiction of Mogul quality analysis of bond lengths, bond angles, torsion angles, and ring geometry for all instances of the Ligand of Interest. In addition, ligands with molecular weight > 250 and outliers as shown on the validation Tables will also be included. For torsion angles, if less than 5% of the Mogul distribution of torsion angles is within 10 degrees of the torsion angle in question, then that torsion angle is considered an outlier. Any bond that is central to one or more torsion angles identified as an outlier by Mogul will be highlighted in the graph. For rings, the root-mean-square deviation (RMSD) between the ring in question and similar rings identified by Mogul is calculated over all ring torsion angles. If the average RMSD is greater than 60 degrees and the minimal RMSD between the ring in question and any Mogul-identified rings is also greater than 60 degrees, then that ring is considered an outlier. The outliers are highlighted in purple. The color gray indicates Mogul did not find sufficient equivalents in the CSD to analyse the geometry.





5.7 Other polymers [i](#)

There are no such residues in this entry.

5.8 Polymer linkage issues [i](#)

There are no chain breaks in this entry.

6 Fit of model and data

6.1 Protein, DNA and RNA chains

In the following table, the column labelled ‘#RSRZ > 2’ contains the number (and percentage) of RSRZ outliers, followed by percent RSRZ outliers for the chain as percentile scores relative to all X-ray entries and entries of similar resolution. The OWAB column contains the minimum, median, 95th percentile and maximum values of the occupancy-weighted average B-factor per residue. The column labelled ‘Q < 0.9’ lists the number of (and percentage) of residues with an average occupancy less than 0.9.

Mol	Chain	Analysed	<RSRZ>	#RSRZ>2	OWAB(Å ²)	Q<0.9
1	A	317/319 (99%)	0.83	28 (8%) 15 16	33, 42, 67, 93	0
1	B	317/319 (99%)	0.87	33 (10%) 11 11	32, 42, 68, 89	0
All	All	634/638 (99%)	0.85	61 (9%) 13 14	32, 42, 67, 93	0

All (61) RSRZ outliers are listed below:

Mol	Chain	Res	Type	RSRZ
1	B	225	THR	6.7
1	A	318	THR	5.5
1	A	228	LYS	5.1
1	A	2	VAL	4.7
1	A	225	THR	4.5
1	A	317	VAL	4.3
1	B	2	VAL	4.2
1	A	191	THR	4.1
1	B	191	THR	3.8
1	B	227	GLY	3.8
1	B	228	LYS	3.7
1	A	224	CYS	3.6
1	B	226	CYS	3.6
1	B	185	LEU	3.6
1	A	226	CYS	3.5
1	B	190	LYS	3.5
1	B	280	GLU	3.4
1	A	193	GLY	3.3
1	B	224	CYS	3.3
1	A	105	LYS	3.3
1	B	3	ARG	3.2
1	A	272	HIS	3.2
1	B	196	GLN	3.0
1	A	192	CYS	3.0

Continued on next page...

Continued from previous page...

Mol	Chain	Res	Type	RSRZ
1	B	272	HIS	3.0
1	B	47	HIS	2.9
1	A	229	GLN	2.9
1	A	190	LYS	2.9
1	A	189	CYS	2.8
1	B	188	VAL	2.8
1	A	280	GLU	2.8
1	A	180	SER	2.7
1	B	315	LYS	2.6
1	B	311	THR	2.6
1	A	5	ILE	2.6
1	A	194	GLN	2.6
1	B	5	ILE	2.5
1	A	48	ASN	2.5
1	B	43	LYS	2.5
1	A	47	HIS	2.5
1	B	308	ASN	2.5
1	B	318	THR	2.4
1	B	21	VAL	2.4
1	B	141	ALA	2.4
1	A	227	GLY	2.3
1	A	315	LYS	2.3
1	B	254	LYS	2.3
1	B	6	LYS	2.3
1	B	306	LYS	2.2
1	A	22	ASP	2.2
1	B	174	GLN	2.2
1	B	223	PRO	2.1
1	B	177	ASN	2.1
1	A	37	ASP	2.1
1	B	78	SER	2.1
1	A	306	LYS	2.1
1	B	269	GLN	2.0
1	A	200	LYS	2.0
1	B	193	GLY	2.0
1	A	80	LEU	2.0
1	B	179	ASP	2.0

6.2 Non-standard residues in protein, DNA, RNA chains ⓘ

There are no non-standard protein/DNA/RNA residues in this entry.

6.3 Carbohydrates [i](#)

There are no oligosaccharides in this entry.

6.4 Ligands [i](#)

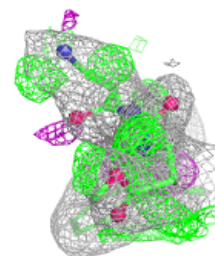
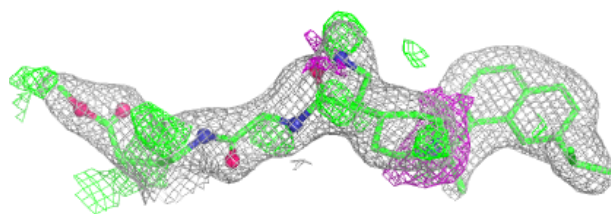
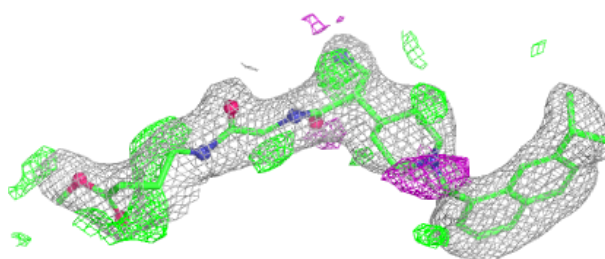
In the following table, the Atoms column lists the number of modelled atoms in the group and the number defined in the chemical component dictionary. The B-factors column lists the minimum, median, 95th percentile and maximum values of B factors of atoms in the group. The column labelled 'Q< 0.9' lists the number of atoms with occupancy less than 0.9.

Mol	Type	Chain	Res	Atoms	RSCC	RSR	B-factors(\AA^2)	Q<0.9
2	A1C1A	A	401	38/38	0.87	0.17	32,40,50,58	0
2	A1C1A	B	401	38/38	0.87	0.17	37,42,51,54	0
3	CL	A	402	1/1	0.88	0.19	72,72,72,72	0
3	CL	B	402	1/1	0.93	0.15	73,73,73,73	0
4	ZN	B	403	1/1	0.95	0.07	85,85,85,85	1
4	ZN	A	403	1/1	0.96	0.07	87,87,87,87	1

The following is a graphical depiction of the model fit to experimental electron density of all instances of the Ligand of Interest. In addition, ligands with molecular weight > 250 and outliers as shown on the geometry validation Tables will also be included. Each fit is shown from different orientation to approximate a three-dimensional view.

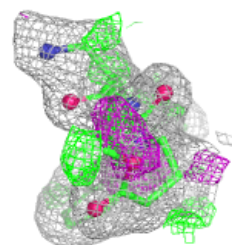
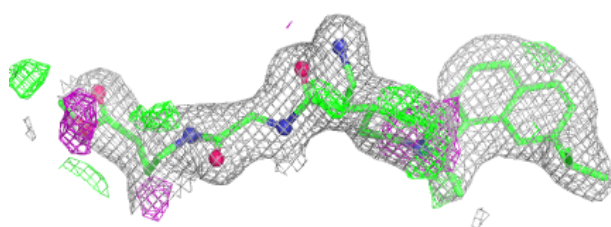
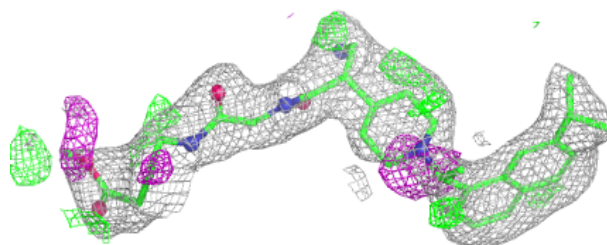
Electron density around A1C1A A 401:

2mF_o-DF_c (at 0.7 rmsd) in gray
mF_o-DF_c (at 3 rmsd) in purple (negative)
and green (positive)



Electron density around A1C1A B 401:

$2mF_o-DF_c$ (at 0.7 rmsd) in gray
 mF_o-DF_c (at 3 rmsd) in purple (negative)
and green (positive)



6.5 Other polymers [i](#)

There are no such residues in this entry.