



Full wwPDB X-ray Structure Validation Report ⓘ

Jun 22, 2024 – 03:38 PM EDT

PDB ID : 4XHF
Title : Crystal structure of Shewanella oneidensis NqrC
Authors : Tomchick, D.R.; Brautigam, C.A.; Deka, R.K.; Norgard, M.V.
Deposited on : 2015-01-05
Resolution : 1.76 Å(reported)

This is a Full wwPDB X-ray Structure Validation Report for a publicly released PDB entry.

We welcome your comments at validation@mail.wwpdb.org

A user guide is available at

<https://www.wwpdb.org/validation/2017/XrayValidationReportHelp>

with specific help available everywhere you see the ⓘ symbol.

The types of validation reports are described at

<http://www.wwpdb.org/validation/2017/FAQs#types>.

The following versions of software and data (see [references ⓘ](#)) were used in the production of this report:

MolProbity : 4.02b-467
Mogul : 1.8.5 (274361), CSD as541be (2020)
Xtriage (Phenix) : 1.13
EDS : 2.37.1
buster-report : 1.1.7 (2018)
Percentile statistics : 20191225.v01 (using entries in the PDB archive December 25th 2019)
Refmac : 5.8.0158
CCP4 : 7.0.044 (Gargrove)
Ideal geometry (proteins) : Engh & Huber (2001)
Ideal geometry (DNA, RNA) : Parkinson et al. (1996)
Validation Pipeline (wwPDB-VP) : 2.37.1

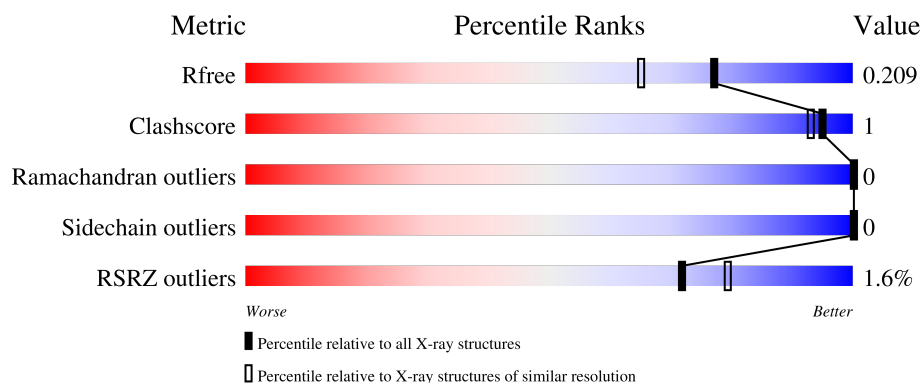
1 Overall quality at a glance

The following experimental techniques were used to determine the structure:

X-RAY DIFFRACTION

The reported resolution of this entry is 1.76 Å.

Percentile scores (ranging between 0-100) for global validation metrics of the entry are shown in the following graphic. The table shows the number of entries on which the scores are based.



Metric	Whole archive (#Entries)	Similar resolution (#Entries, resolution range(Å))
R_{free}	130704	2340 (1.76-1.76)
Clashscore	141614	2466 (1.76-1.76)
Ramachandran outliers	138981	2437 (1.76-1.76)
Sidechain outliers	138945	2437 (1.76-1.76)
RSRZ outliers	127900	2298 (1.76-1.76)

The table below summarises the geometric issues observed across the polymeric chains and their fit to the electron density. The red, orange, yellow and green segments of the lower bar indicate the fraction of residues that contain outliers for ≥ 3 , 2, 1 and 0 types of geometric quality criteria respectively. A grey segment represents the fraction of residues that are not modelled. The numeric value for each fraction is indicated below the corresponding segment, with a dot representing fractions $\leq 5\%$. The upper red bar (where present) indicates the fraction of residues that have poor fit to the electron density. The numeric value is given above the bar.

Mol	Chain	Length	Quality of chain
1	A	260	<div> <div>%</div> <div> <div></div> <div>83%</div> <div>14%</div> </div> </div>
1	B	260	<div> <div>3%</div> <div> <div></div> <div>85%</div> <div>13%</div> </div> </div>
1	C	260	<div> <div></div> <div> <div></div> <div>82%</div> <div>17%</div> </div> </div>
1	D	260	<div> <div>2%</div> <div> <div></div> <div>82%</div> <div>16%</div> </div> </div>

2 Entry composition

There are 4 unique types of molecules in this entry. The entry contains 14760 atoms, of which 7033 are hydrogens and 0 are deuteriums.

In the tables below, the ZeroOcc column contains the number of atoms modelled with zero occupancy, the AltConf column contains the number of residues with at least one atom in alternate conformation and the Trace column contains the number of residues modelled with at most 2 atoms.

- Molecule 1 is a protein called Na-translocating NADH-quinone reductase subunit C NqrC.

Mol	Chain	Residues	Atoms						ZeroOcc	AltConf	Trace
1	A	223	Total	C	H	N	O	S	0	0	0
			3495	1120	1746	299	324	6			
1	B	225	Total	C	H	N	O	S	0	2	0
			3543	1134	1774	301	326	8			
1	C	217	Total	C	H	N	O	S	0	1	0
			3395	1092	1693	288	315	7			
1	D	219	Total	C	H	N	O	S	0	4	0
			3479	1114	1744	297	318	6			

There are 112 discrepancies between the modelled and reference sequences:

Chain	Residue	Modelled	Actual	Comment	Reference
A	-27	MET	-	initiating methionine	UNP Q8EID8
A	-26	SER	-	expression tag	UNP Q8EID8
A	-25	TYR	-	expression tag	UNP Q8EID8
A	-24	TYR	-	expression tag	UNP Q8EID8
A	-23	HIS	-	expression tag	UNP Q8EID8
A	-22	HIS	-	expression tag	UNP Q8EID8
A	-21	HIS	-	expression tag	UNP Q8EID8
A	-20	HIS	-	expression tag	UNP Q8EID8
A	-19	HIS	-	expression tag	UNP Q8EID8
A	-18	HIS	-	expression tag	UNP Q8EID8
A	-17	ASP	-	expression tag	UNP Q8EID8
A	-16	TYR	-	expression tag	UNP Q8EID8
A	-15	ASP	-	expression tag	UNP Q8EID8
A	-14	ILE	-	expression tag	UNP Q8EID8
A	-13	PRO	-	expression tag	UNP Q8EID8
A	-12	THR	-	expression tag	UNP Q8EID8
A	-11	THR	-	expression tag	UNP Q8EID8
A	-10	GLU	-	expression tag	UNP Q8EID8
A	-9	ASN	-	expression tag	UNP Q8EID8
A	-8	LEU	-	expression tag	UNP Q8EID8
A	-7	TYR	-	expression tag	UNP Q8EID8

Continued on next page...

Continued from previous page...

Chain	Residue	Modelled	Actual	Comment	Reference
A	-6	PHE	-	expression tag	UNP Q8EID8
A	-5	GLN	-	expression tag	UNP Q8EID8
A	-4	GLY	-	expression tag	UNP Q8EID8
A	-3	ALA	-	expression tag	UNP Q8EID8
A	-2	MET	-	expression tag	UNP Q8EID8
A	-1	GLY	-	expression tag	UNP Q8EID8
A	0	SER	-	expression tag	UNP Q8EID8
B	-27	MET	-	initiating methionine	UNP Q8EID8
B	-26	SER	-	expression tag	UNP Q8EID8
B	-25	TYR	-	expression tag	UNP Q8EID8
B	-24	TYR	-	expression tag	UNP Q8EID8
B	-23	HIS	-	expression tag	UNP Q8EID8
B	-22	HIS	-	expression tag	UNP Q8EID8
B	-21	HIS	-	expression tag	UNP Q8EID8
B	-20	HIS	-	expression tag	UNP Q8EID8
B	-19	HIS	-	expression tag	UNP Q8EID8
B	-18	HIS	-	expression tag	UNP Q8EID8
B	-17	ASP	-	expression tag	UNP Q8EID8
B	-16	TYR	-	expression tag	UNP Q8EID8
B	-15	ASP	-	expression tag	UNP Q8EID8
B	-14	ILE	-	expression tag	UNP Q8EID8
B	-13	PRO	-	expression tag	UNP Q8EID8
B	-12	THR	-	expression tag	UNP Q8EID8
B	-11	THR	-	expression tag	UNP Q8EID8
B	-10	GLU	-	expression tag	UNP Q8EID8
B	-9	ASN	-	expression tag	UNP Q8EID8
B	-8	LEU	-	expression tag	UNP Q8EID8
B	-7	TYR	-	expression tag	UNP Q8EID8
B	-6	PHE	-	expression tag	UNP Q8EID8
B	-5	GLN	-	expression tag	UNP Q8EID8
B	-4	GLY	-	expression tag	UNP Q8EID8
B	-3	ALA	-	expression tag	UNP Q8EID8
B	-2	MET	-	expression tag	UNP Q8EID8
B	-1	GLY	-	expression tag	UNP Q8EID8
B	0	SER	-	expression tag	UNP Q8EID8
C	-27	MET	-	initiating methionine	UNP Q8EID8
C	-26	SER	-	expression tag	UNP Q8EID8
C	-25	TYR	-	expression tag	UNP Q8EID8
C	-24	TYR	-	expression tag	UNP Q8EID8
C	-23	HIS	-	expression tag	UNP Q8EID8
C	-22	HIS	-	expression tag	UNP Q8EID8
C	-21	HIS	-	expression tag	UNP Q8EID8

Continued on next page...

Continued from previous page...

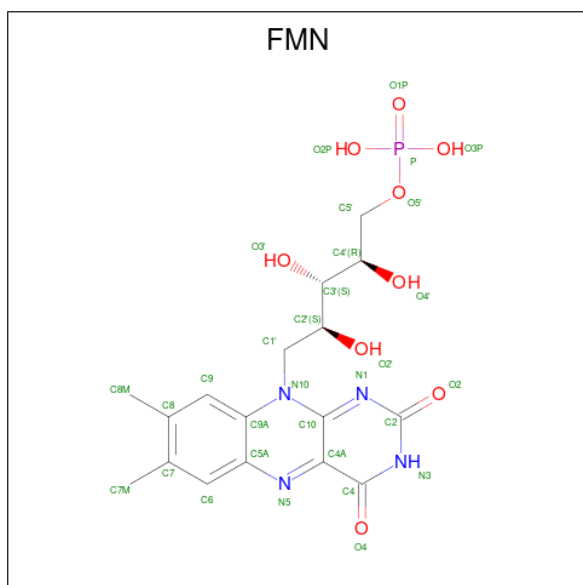
Chain	Residue	Modelled	Actual	Comment	Reference
C	-20	HIS	-	expression tag	UNP Q8EID8
C	-19	HIS	-	expression tag	UNP Q8EID8
C	-18	HIS	-	expression tag	UNP Q8EID8
C	-17	ASP	-	expression tag	UNP Q8EID8
C	-16	TYR	-	expression tag	UNP Q8EID8
C	-15	ASP	-	expression tag	UNP Q8EID8
C	-14	ILE	-	expression tag	UNP Q8EID8
C	-13	PRO	-	expression tag	UNP Q8EID8
C	-12	THR	-	expression tag	UNP Q8EID8
C	-11	THR	-	expression tag	UNP Q8EID8
C	-10	GLU	-	expression tag	UNP Q8EID8
C	-9	ASN	-	expression tag	UNP Q8EID8
C	-8	LEU	-	expression tag	UNP Q8EID8
C	-7	TYR	-	expression tag	UNP Q8EID8
C	-6	PHE	-	expression tag	UNP Q8EID8
C	-5	GLN	-	expression tag	UNP Q8EID8
C	-4	GLY	-	expression tag	UNP Q8EID8
C	-3	ALA	-	expression tag	UNP Q8EID8
C	-2	MET	-	expression tag	UNP Q8EID8
C	-1	GLY	-	expression tag	UNP Q8EID8
C	0	SER	-	expression tag	UNP Q8EID8
D	-27	MET	-	initiating methionine	UNP Q8EID8
D	-26	SER	-	expression tag	UNP Q8EID8
D	-25	TYR	-	expression tag	UNP Q8EID8
D	-24	TYR	-	expression tag	UNP Q8EID8
D	-23	HIS	-	expression tag	UNP Q8EID8
D	-22	HIS	-	expression tag	UNP Q8EID8
D	-21	HIS	-	expression tag	UNP Q8EID8
D	-20	HIS	-	expression tag	UNP Q8EID8
D	-19	HIS	-	expression tag	UNP Q8EID8
D	-18	HIS	-	expression tag	UNP Q8EID8
D	-17	ASP	-	expression tag	UNP Q8EID8
D	-16	TYR	-	expression tag	UNP Q8EID8
D	-15	ASP	-	expression tag	UNP Q8EID8
D	-14	ILE	-	expression tag	UNP Q8EID8
D	-13	PRO	-	expression tag	UNP Q8EID8
D	-12	THR	-	expression tag	UNP Q8EID8
D	-11	THR	-	expression tag	UNP Q8EID8
D	-10	GLU	-	expression tag	UNP Q8EID8
D	-9	ASN	-	expression tag	UNP Q8EID8
D	-8	LEU	-	expression tag	UNP Q8EID8
D	-7	TYR	-	expression tag	UNP Q8EID8

Continued on next page...

Continued from previous page...

Chain	Residue	Modelled	Actual	Comment	Reference
D	-6	PHE	-	expression tag	UNP Q8EID8
D	-5	GLN	-	expression tag	UNP Q8EID8
D	-4	GLY	-	expression tag	UNP Q8EID8
D	-3	ALA	-	expression tag	UNP Q8EID8
D	-2	MET	-	expression tag	UNP Q8EID8
D	-1	GLY	-	expression tag	UNP Q8EID8
D	0	SER	-	expression tag	UNP Q8EID8

- Molecule 2 is FLAVIN MONONUCLEOTIDE (three-letter code: FMN) (formula: $C_{17}H_{21}N_4O_9P$).



Mol	Chain	Residues	Atoms						ZeroOcc	AltConf
2	A	1	Total 49	C 17	H 19	N 4	O 8	P 1	0	0
2	B	1	Total 49	C 17	H 19	N 4	O 8	P 1	0	0
2	C	1	Total 49	C 17	H 19	N 4	O 8	P 1	0	0
2	D	1	Total 49	C 17	H 19	N 4	O 8	P 1	0	0

- Molecule 3 is SODIUM ION (three-letter code: NA) (formula: Na).

Mol	Chain	Residues	Atoms		ZeroOcc	AltConf
3	D	1	Total	Na	0	0
			1	1		

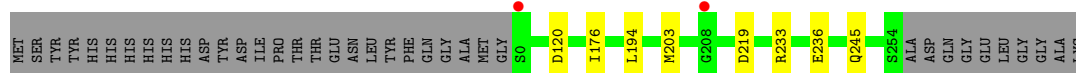
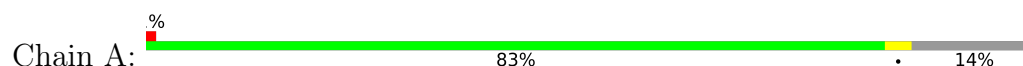
- Molecule 4 is water.

Mol	Chain	Residues	Atoms		ZeroOcc	AltConf
4	A	179	Total 179	O 179	0	0
4	B	149	Total 149	O 149	0	0
4	C	154	Total 154	O 154	0	0
4	D	169	Total 169	O 169	0	0

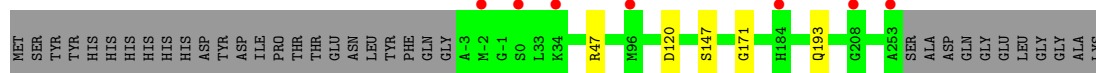
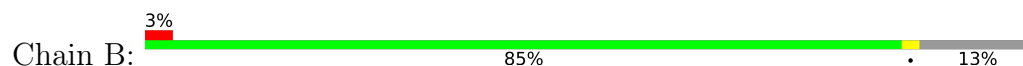
3 Residue-property plots [i](#)

These plots are drawn for all protein, RNA, DNA and oligosaccharide chains in the entry. The first graphic for a chain summarises the proportions of the various outlier classes displayed in the second graphic. The second graphic shows the sequence view annotated by issues in geometry and electron density. Residues are color-coded according to the number of geometric quality criteria for which they contain at least one outlier: green = 0, yellow = 1, orange = 2 and red = 3 or more. A red dot above a residue indicates a poor fit to the electron density ($RSRZ > 2$). Stretches of 2 or more consecutive residues without any outlier are shown as a green connector. Residues present in the sample, but not in the model, are shown in grey.

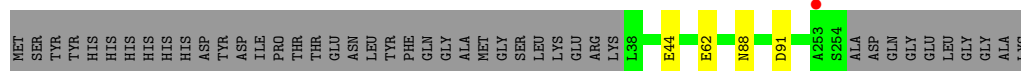
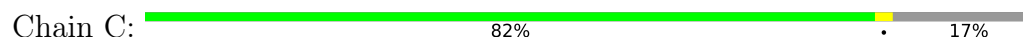
- Molecule 1: Na-translocating NADH-quinone reductase subunit C NqrC



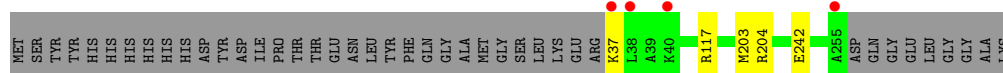
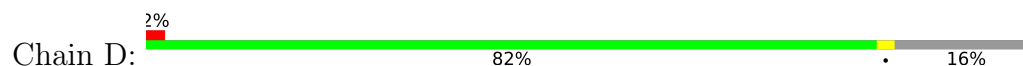
- Molecule 1: Na-translocating NADH-quinone reductase subunit C NqrC



- Molecule 1: Na-translocating NADH-quinone reductase subunit C NqrC



- Molecule 1: Na-translocating NADH-quinone reductase subunit C NqrC



4 Data and refinement statistics

Property	Value	Source
Space group	P 1 21 1	Depositor
Cell constants a, b, c, α , β , γ	70.91Å 93.48Å 71.14Å 90.00° 100.24° 90.00°	Depositor
Resolution (Å)	33.71 – 1.76 33.71 – 1.76	Depositor EDS
% Data completeness (in resolution range)	98.3 (33.71-1.76) 97.5 (33.71-1.76)	Depositor EDS
R_{merge}	0.07	Depositor
R_{sym}	(Not available)	Depositor
$\langle I/\sigma(I) \rangle$ ¹	2.62 (at 1.76Å)	Xtriage
Refinement program	PHENIX	Depositor
R, R_{free}	0.166 , 0.202 0.173 , 0.209	Depositor DCC
R_{free} test set	2005 reflections (2.26%)	wwPDB-VP
Wilson B-factor (Å ²)	17.7	Xtriage
Anisotropy	0.038	Xtriage
Bulk solvent k_{sol} (e/Å ³), B_{sol} (Å ²)	0.38 , 27.4	EDS
L-test for twinning ²	$\langle L \rangle = 0.42$, $\langle L^2 \rangle = 0.25$	Xtriage
Estimated twinning fraction	0.379 for l,-k,h	Xtriage
Reported twinning fraction	0.380 for l,-k,h	Depositor
Outliers	0 of 88913 reflections	Xtriage
F_o, F_c correlation	0.96	EDS
Total number of atoms	14760	wwPDB-VP
Average B, all atoms (Å ²)	23.0	wwPDB-VP

Xtriage's analysis on translational NCS is as follows: *The analyses of the Patterson function reveals a significant off-origin peak that is 66.95 % of the origin peak, indicating pseudo-translational symmetry. The chance of finding a peak of this or larger height randomly in a structure without pseudo-translational symmetry is equal to 5.5652e-06. The detected translational NCS is most likely also responsible for the elevated intensity ratio.*

¹Intensities estimated from amplitudes.

²Theoretical values of $\langle |L| \rangle$, $\langle L^2 \rangle$ for acentric reflections are 0.5, 0.333 respectively for untwinned datasets, and 0.375, 0.2 for perfectly twinned datasets.

5 Model quality [i](#)

5.1 Standard geometry [i](#)

Bond lengths and bond angles in the following residue types are not validated in this section: NA, FMN

The Z score for a bond length (or angle) is the number of standard deviations the observed value is removed from the expected value. A bond length (or angle) with $|Z| > 5$ is considered an outlier worth inspection. RMSZ is the root-mean-square of all Z scores of the bond lengths (or angles).

Mol	Chain	Bond lengths		Bond angles	
		RMSZ	$\# Z > 5$	RMSZ	$\# Z > 5$
1	A	0.24	0/1786	0.39	0/2404
1	B	0.23	0/1812	0.39	0/2438
1	C	0.24	0/1742	0.39	0/2347
1	D	0.23	0/1784	0.40	0/2403
All	All	0.23	0/7124	0.39	0/9592

There are no bond length outliers.

There are no bond angle outliers.

There are no chirality outliers.

There are no planarity outliers.

5.2 Too-close contacts [i](#)

In the following table, the Non-H and H(model) columns list the number of non-hydrogen atoms and hydrogen atoms in the chain respectively. The H(added) column lists the number of hydrogen atoms added and optimized by MolProbity. The Clashes column lists the number of clashes within the asymmetric unit, whereas Symm-Clashes lists symmetry-related clashes.

Mol	Chain	Non-H	H(model)	H(added)	Clashes	Symm-Clashes
1	A	1749	1746	1748	7	0
1	B	1769	1774	1776	4	0
1	C	1702	1693	1693	3	0
1	D	1735	1744	1744	3	0
2	A	30	19	19	1	0
2	B	30	19	19	0	0
2	C	30	19	19	0	0
2	D	30	19	19	0	0
3	D	1	0	0	0	0

Continued on next page...

Continued from previous page...

Mol	Chain	Non-H	H(model)	H(added)	Clashes	Symm-Clashes
4	A	179	0	0	5	2
4	B	149	0	0	3	1
4	C	154	0	0	2	2
4	D	169	0	0	1	3
All	All	7727	7033	7037	17	4

The all-atom clashscore is defined as the number of clashes found per 1000 atoms (including hydrogen atoms). The all-atom clashscore for this structure is 1.

All (17) close contacts within the same asymmetric unit are listed below, sorted by their clash magnitude.

Atom-1	Atom-2	Interatomic distance (Å)	Clash overlap (Å)
1:B:120:ASP:OD2	4:B:401:HOH:O	2.04	0.74
1:A:236:GLU:OE1	4:A:569:HOH:O	2.06	0.71
1:A:233:ARG:NH2	4:A:578:HOH:O	2.23	0.71
1:A:245:GLN:NE2	4:A:548:HOH:O	2.25	0.68
1:C:44:GLU:OE2	4:C:549:HOH:O	2.14	0.65
1:B:193:GLN:OE1	4:B:495:HOH:O	2.16	0.61
1:C:62:GLU:OE2	4:C:401:HOH:O	2.16	0.61
1:A:219:ASP:OD2	4:A:457:HOH:O	2.16	0.58
1:D:37:LYS:N	4:D:564:HOH:O	2.36	0.57
1:B:47:ARG:NH1	4:B:404:HOH:O	2.35	0.55
1:A:120:ASP:OD2	4:A:533:HOH:O	2.20	0.50
1:D:203:MET:O	1:D:204:ARG:NH1	2.47	0.45
1:D:117:ARG:NH1	1:D:242:GLU:O	2.47	0.44
1:B:147:SER:OG	1:B:171:GLY:N	2.51	0.44
1:C:88:ASN:ND2	1:C:91:ASP:OD2	2.52	0.43
1:A:176:ILE:HG21	2:A:300:FMN:C10	2.50	0.42
1:A:194:LEU:HA	1:A:203:MET:HG2	2.02	0.41

All (4) symmetry-related close contacts are listed below. The label for Atom-2 includes the symmetry operator and encoded unit-cell translations to be applied.

Atom-1	Atom-2	Interatomic distance (Å)	Clash overlap (Å)
4:B:424:HOH:O	4:D:445:HOH:O[1_556]	2.00	0.20
4:C:417:HOH:O	4:D:457:HOH:O[1_556]	2.12	0.08
4:A:418:HOH:O	4:D:441:HOH:O[2_646]	2.16	0.04
4:A:404:HOH:O	4:C:412:HOH:O[2_546]	2.18	0.02

5.3 Torsion angles

5.3.1 Protein backbone

In the following table, the Percentiles column shows the percent Ramachandran outliers of the chain as a percentile score with respect to all X-ray entries followed by that with respect to entries of similar resolution.

The Analysed column shows the number of residues for which the backbone conformation was analysed, and the total number of residues.

Mol	Chain	Analysed	Favoured	Allowed	Outliers	Percentiles	
1	A	221/260 (85%)	213 (96%)	8 (4%)	0	100	100
1	B	225/260 (86%)	220 (98%)	5 (2%)	0	100	100
1	C	216/260 (83%)	211 (98%)	5 (2%)	0	100	100
1	D	221/260 (85%)	217 (98%)	4 (2%)	0	100	100
All	All	883/1040 (85%)	861 (98%)	22 (2%)	0	100	100

There are no Ramachandran outliers to report.

5.3.2 Protein sidechains

In the following table, the Percentiles column shows the percent sidechain outliers of the chain as a percentile score with respect to all X-ray entries followed by that with respect to entries of similar resolution.

The Analysed column shows the number of residues for which the sidechain conformation was analysed, and the total number of residues.

Mol	Chain	Analysed	Rotameric	Outliers	Percentiles	
1	A	185/214 (86%)	185 (100%)	0	100	100
1	B	187/214 (87%)	187 (100%)	0	100	100
1	C	180/214 (84%)	180 (100%)	0	100	100
1	D	184/214 (86%)	184 (100%)	0	100	100
All	All	736/856 (86%)	736 (100%)	0	100	100

There are no protein residues with a non-rotameric sidechain to report.

Sometimes sidechains can be flipped to improve hydrogen bonding and reduce clashes. There are no such sidechains identified.

5.3.3 RNA ⓘ

There are no RNA molecules in this entry.

5.4 Non-standard residues in protein, DNA, RNA chains ⓘ

There are no non-standard protein/DNA/RNA residues in this entry.

5.5 Carbohydrates ⓘ

There are no monosaccharides in this entry.

5.6 Ligand geometry ⓘ

Of 5 ligands modelled in this entry, 1 is monoatomic - leaving 4 for Mogul analysis.

In the following table, the Counts columns list the number of bonds (or angles) for which Mogul statistics could be retrieved, the number of bonds (or angles) that are observed in the model and the number of bonds (or angles) that are defined in the Chemical Component Dictionary. The Link column lists molecule types, if any, to which the group is linked. The Z score for a bond length (or angle) is the number of standard deviations the observed value is removed from the expected value. A bond length (or angle) with $|Z| > 2$ is considered an outlier worth inspection. RMSZ is the root-mean-square of all Z scores of the bond lengths (or angles).

Mol	Type	Chain	Res	Link	Bond lengths			Bond angles		
					Counts	RMSZ	$\# Z > 2$	Counts	RMSZ	$\# Z > 2$
2	FMN	D	301	1	29,32,33	2.39	11 (37%)	40,47,50	1.29	6 (15%)
2	FMN	C	300	1	29,32,33	2.45	11 (37%)	40,47,50	1.28	6 (15%)
2	FMN	B	300	1	29,32,33	2.41	11 (37%)	40,47,50	1.29	7 (17%)
2	FMN	A	300	1	29,32,33	2.47	11 (37%)	40,47,50	1.26	6 (15%)

In the following table, the Chirals column lists the number of chiral outliers, the number of chiral centers analysed, the number of these observed in the model and the number defined in the Chemical Component Dictionary. Similar counts are reported in the Torsion and Rings columns. '-' means no outliers of that kind were identified.

Mol	Type	Chain	Res	Link	Chirals	Torsions	Rings
2	FMN	D	301	1	-	2/15/17/18	0/3/3/3
2	FMN	C	300	1	-	0/15/17/18	0/3/3/3
2	FMN	B	300	1	-	0/15/17/18	0/3/3/3
2	FMN	A	300	1	-	0/15/17/18	0/3/3/3

All (44) bond length outliers are listed below:

Mol	Chain	Res	Type	Atoms	Z	Observed(Å)	Ideal(Å)
2	A	300	FMN	C4A-N5	5.82	1.42	1.30
2	B	300	FMN	C4A-N5	5.79	1.42	1.30
2	D	301	FMN	C4A-N5	5.74	1.41	1.30
2	C	300	FMN	C4A-N5	5.72	1.41	1.30
2	A	300	FMN	C10-N1	4.92	1.43	1.33
2	C	300	FMN	C10-N1	4.85	1.43	1.33
2	B	300	FMN	C10-N1	4.71	1.42	1.33
2	D	301	FMN	C10-N1	4.68	1.42	1.33
2	D	301	FMN	O2-C2	-4.10	1.16	1.24
2	A	300	FMN	O2-C2	-4.06	1.16	1.24
2	B	300	FMN	O2-C2	-4.03	1.16	1.24
2	C	300	FMN	O2-C2	-3.98	1.16	1.24
2	C	300	FMN	C2-N1	3.76	1.45	1.36
2	A	300	FMN	C2-N1	3.76	1.45	1.36
2	B	300	FMN	C2-N1	3.61	1.45	1.36
2	D	301	FMN	C2-N1	3.60	1.45	1.36
2	B	300	FMN	C5A-N5	3.50	1.46	1.39
2	D	301	FMN	C2-N3	3.48	1.47	1.39
2	A	300	FMN	C2-N3	3.47	1.47	1.39
2	B	300	FMN	C2-N3	3.47	1.47	1.39
2	A	300	FMN	C5A-N5	3.46	1.46	1.39
2	C	300	FMN	C2-N3	3.44	1.47	1.39
2	D	301	FMN	C5A-N5	3.43	1.46	1.39
2	C	300	FMN	C5A-N5	3.41	1.46	1.39
2	A	300	FMN	C10-N10	3.37	1.44	1.37
2	C	300	FMN	C10-N10	3.33	1.44	1.37
2	C	300	FMN	C9-C8	3.27	1.44	1.39
2	A	300	FMN	C9-C8	3.17	1.44	1.39
2	B	300	FMN	C10-N10	3.17	1.44	1.37
2	D	301	FMN	C10-N10	3.12	1.44	1.37
2	B	300	FMN	C9-C8	3.03	1.44	1.39
2	C	300	FMN	C9A-N10	2.93	1.46	1.41
2	D	301	FMN	C9-C8	2.92	1.43	1.39
2	C	300	FMN	O4-C4	-2.90	1.18	1.23
2	A	300	FMN	C9A-N10	2.89	1.46	1.41
2	A	300	FMN	O4-C4	-2.83	1.18	1.23
2	D	301	FMN	O4-C4	-2.82	1.18	1.23
2	B	300	FMN	O4-C4	-2.79	1.18	1.23
2	D	301	FMN	C9A-N10	2.72	1.45	1.41
2	B	300	FMN	C9A-N10	2.71	1.45	1.41
2	A	300	FMN	C8M-C8	2.56	1.56	1.51
2	C	300	FMN	C8M-C8	2.51	1.56	1.51

Continued on next page...

Continued from previous page...

Mol	Chain	Res	Type	Atoms	Z	Observed(Å)	Ideal(Å)
2	B	300	FMN	C8M-C8	2.32	1.55	1.51
2	D	301	FMN	C8M-C8	2.21	1.55	1.51

All (25) bond angle outliers are listed below:

Mol	Chain	Res	Type	Atoms	Z	Observed(°)	Ideal(°)
2	D	301	FMN	C4-N3-C2	-3.05	120.01	125.64
2	B	300	FMN	C4-N3-C2	-3.03	120.03	125.64
2	B	300	FMN	C4A-C10-N10	3.03	120.92	116.48
2	A	300	FMN	C4-N3-C2	-3.01	120.08	125.64
2	C	300	FMN	C4-N3-C2	-3.00	120.10	125.64
2	D	301	FMN	C4A-C10-N10	2.90	120.72	116.48
2	A	300	FMN	C4A-C4-N3	2.86	120.45	113.19
2	C	300	FMN	C4A-C4-N3	2.85	120.43	113.19
2	D	301	FMN	C4A-C4-N3	2.80	120.31	113.19
2	B	300	FMN	C4A-C4-N3	2.79	120.28	113.19
2	C	300	FMN	C4A-C10-N10	2.71	120.44	116.48
2	C	300	FMN	O4-C4-C4A	-2.69	119.45	126.60
2	A	300	FMN	O4-C4-C4A	-2.64	119.59	126.60
2	D	301	FMN	O4-C4-C4A	-2.63	119.64	126.60
2	D	301	FMN	C5A-C9A-N10	2.62	120.66	117.95
2	A	300	FMN	C4A-C10-N10	2.60	120.28	116.48
2	B	300	FMN	O4-C4-C4A	-2.50	119.97	126.60
2	B	300	FMN	C5A-C9A-N10	2.44	120.47	117.95
2	C	300	FMN	C5A-C9A-N10	2.39	120.42	117.95
2	A	300	FMN	C9A-C5A-N5	-2.24	119.99	122.43
2	C	300	FMN	C9A-C5A-N5	-2.22	120.01	122.43
2	A	300	FMN	C5A-C9A-N10	2.22	120.24	117.95
2	B	300	FMN	C9A-C5A-N5	-2.16	120.08	122.43
2	D	301	FMN	C9A-C5A-N5	-2.11	120.14	122.43
2	B	300	FMN	C4-C4A-N5	2.09	121.20	118.23

There are no chirality outliers.

All (2) torsion outliers are listed below:

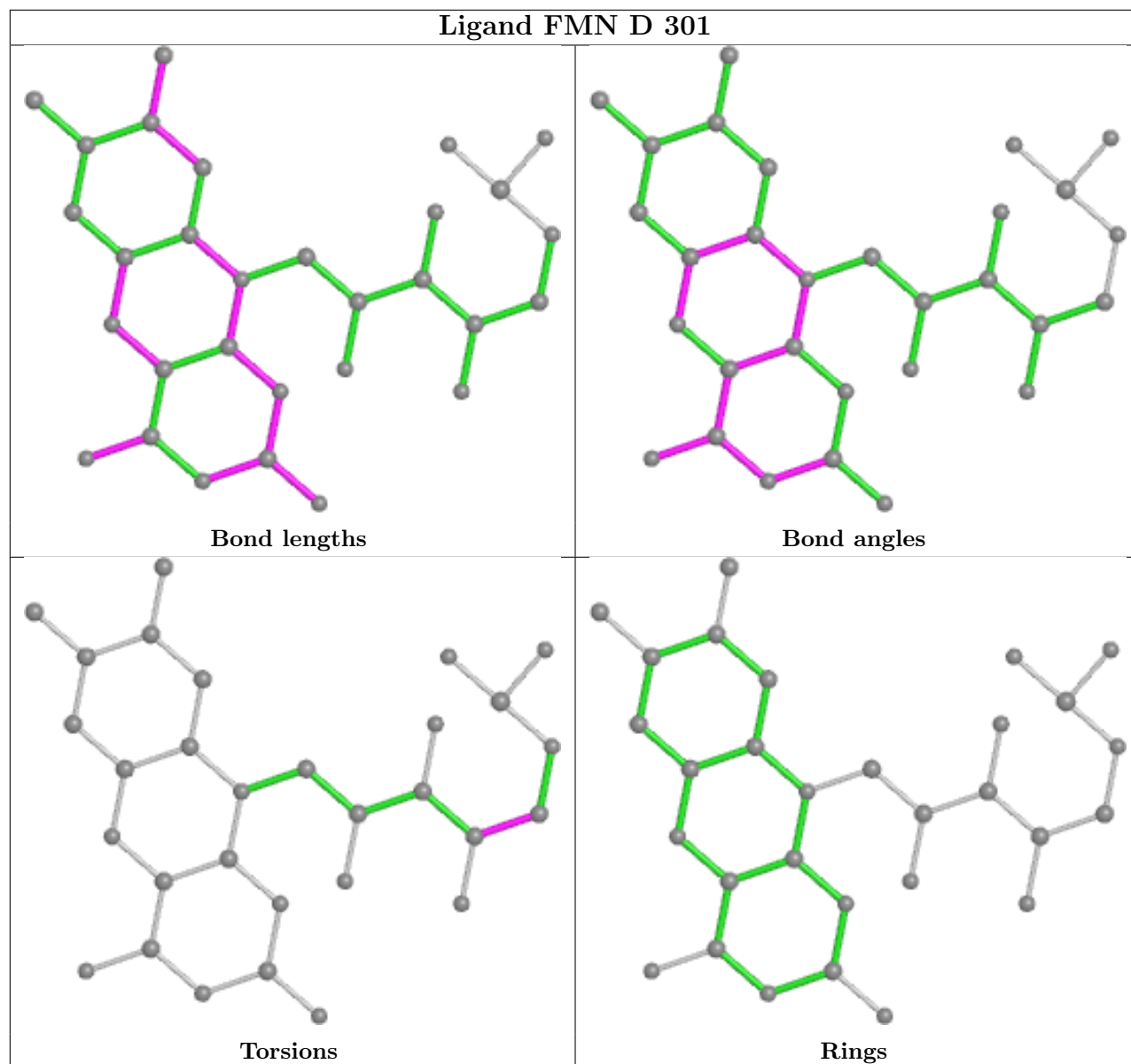
Mol	Chain	Res	Type	Atoms
2	D	301	FMN	C3'-C4'-C5'-O5'
2	D	301	FMN	O4'-C4'-C5'-O5'

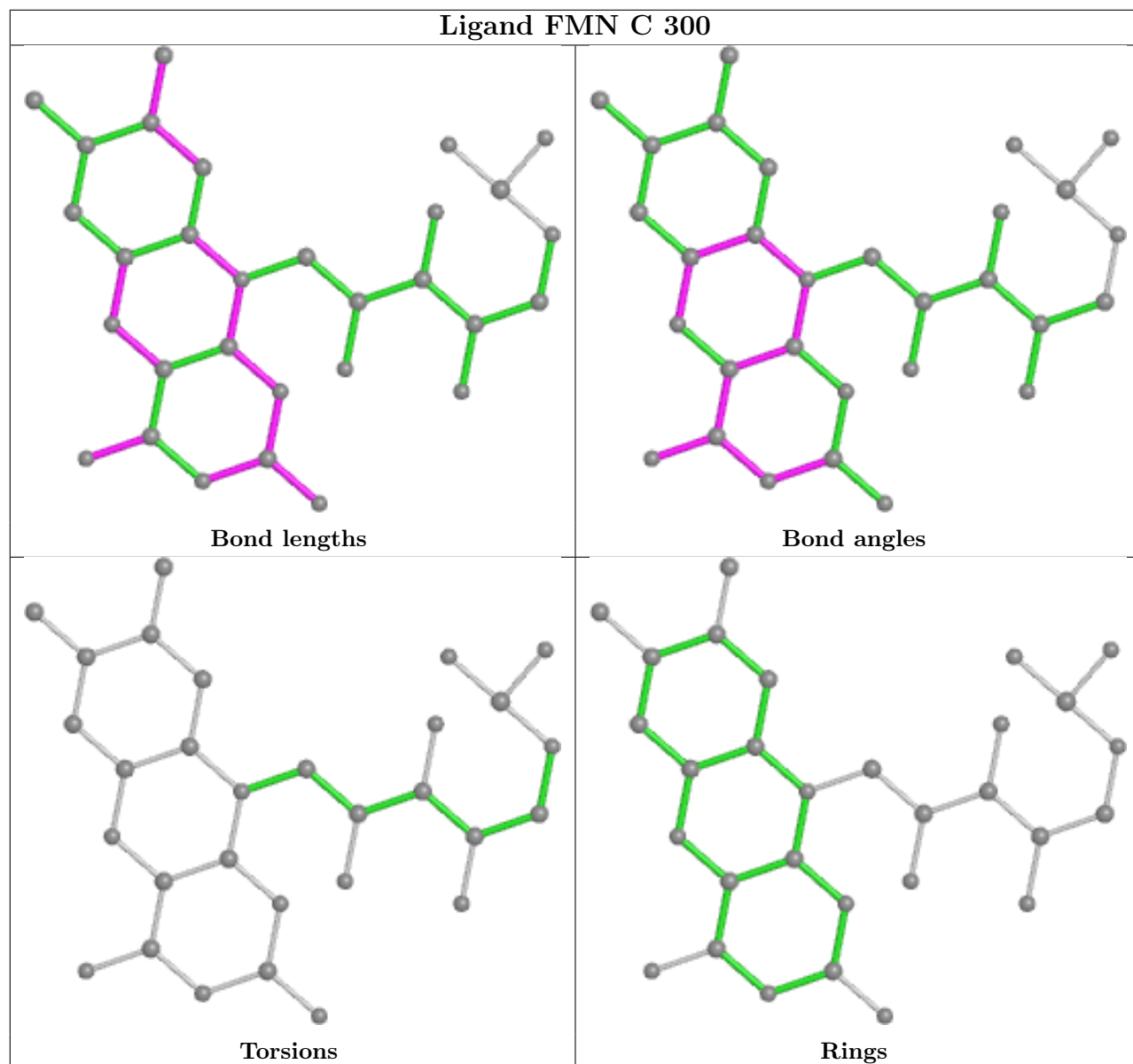
There are no ring outliers.

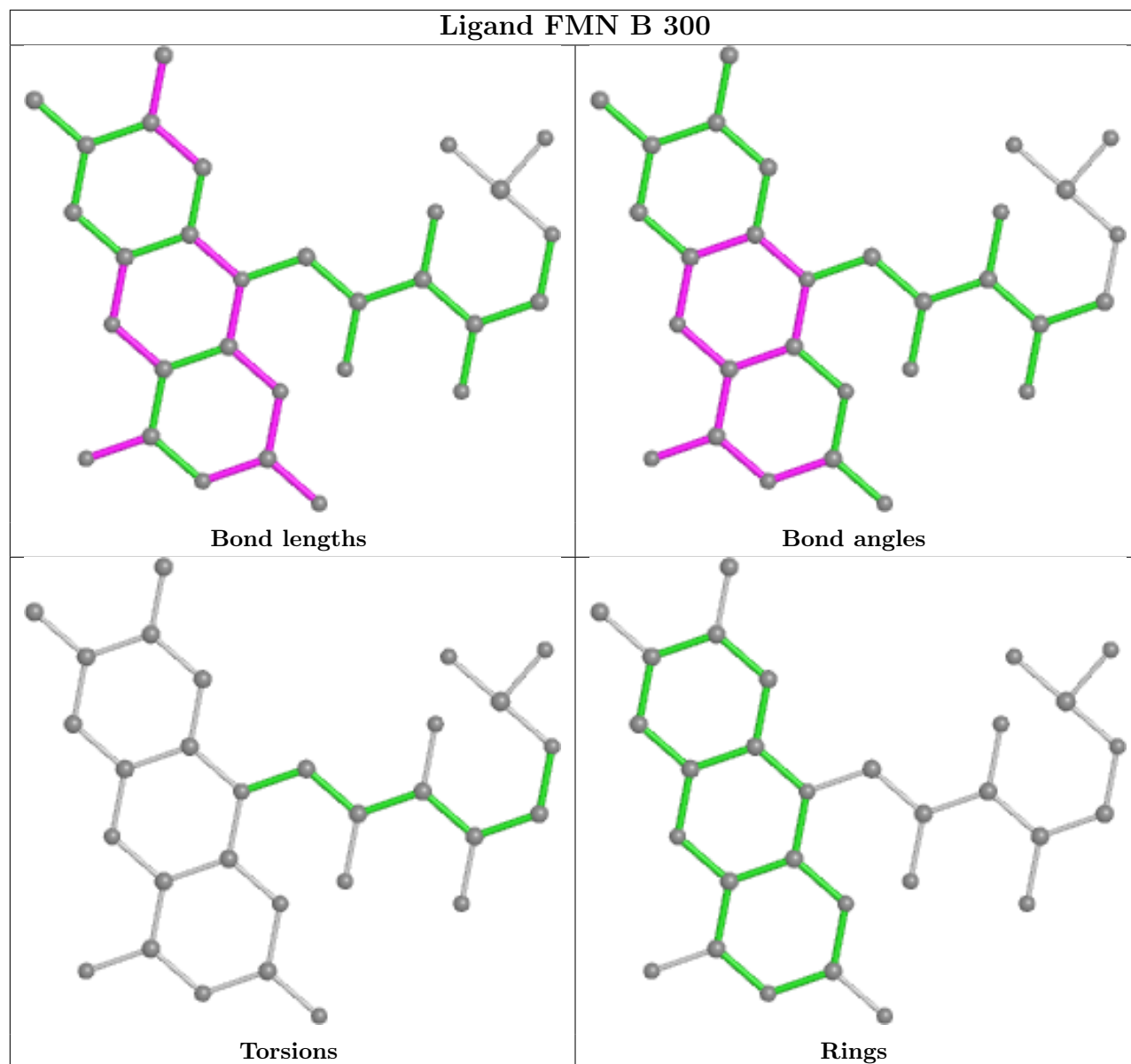
1 monomer is involved in 1 short contact:

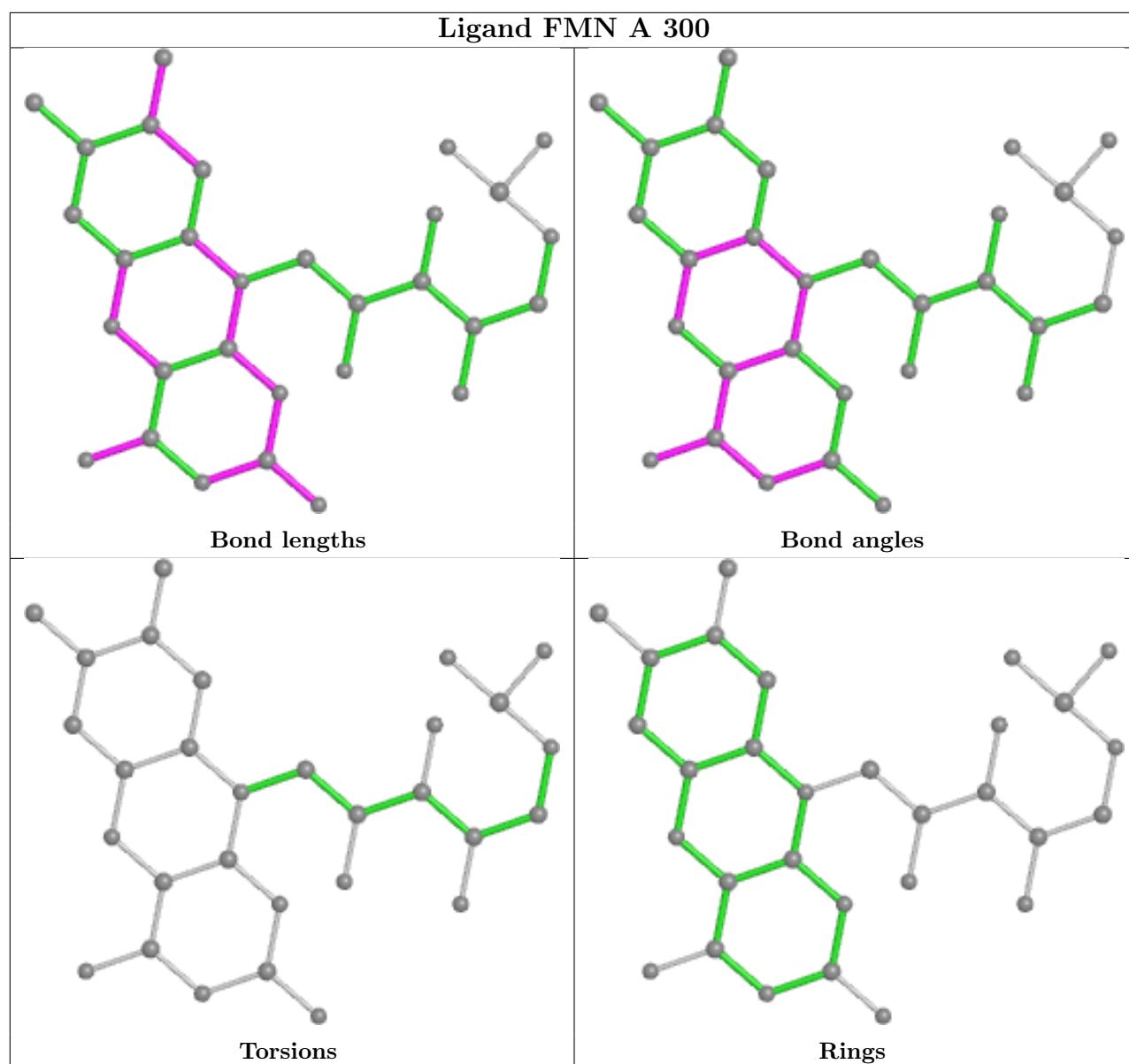
Mol	Chain	Res	Type	Clashes	Symm-Clashes
2	A	300	FMN	1	0

The following is a two-dimensional graphical depiction of Mogul quality analysis of bond lengths, bond angles, torsion angles, and ring geometry for all instances of the Ligand of Interest. In addition, ligands with molecular weight > 250 and outliers as shown on the validation Tables will also be included. For torsion angles, if less than 5% of the Mogul distribution of torsion angles is within 10 degrees of the torsion angle in question, then that torsion angle is considered an outlier. Any bond that is central to one or more torsion angles identified as an outlier by Mogul will be highlighted in the graph. For rings, the root-mean-square deviation (RMSD) between the ring in question and similar rings identified by Mogul is calculated over all ring torsion angles. If the average RMSD is greater than 60 degrees and the minimal RMSD between the ring in question and any Mogul-identified rings is also greater than 60 degrees, then that ring is considered an outlier. The outliers are highlighted in purple. The color gray indicates Mogul did not find sufficient equivalents in the CSD to analyse the geometry.









5.7 Other polymers [i](#)

There are no such residues in this entry.

5.8 Polymer linkage issues [i](#)

There are no chain breaks in this entry.

6 Fit of model and data [i](#)

6.1 Protein, DNA and RNA chains [i](#)

In the following table, the column labelled ‘#RSRZ> 2’ contains the number (and percentage) of RSRZ outliers, followed by percent RSRZ outliers for the chain as percentile scores relative to all X-ray entries and entries of similar resolution. The OWAB column contains the minimum, median, 95th percentile and maximum values of the occupancy-weighted average B-factor per residue. The column labelled ‘Q< 0.9’ lists the number of (and percentage) of residues with an average occupancy less than 0.9.

Mol	Chain	Analysed	<RSRZ>	#RSRZ>2	OWAB(Å ²)	Q<0.9
1	A	223/260 (85%)	0.17	2 (0%) 84 89	8, 19, 35, 50	0
1	B	225/260 (86%)	0.26	7 (3%) 49 55	10, 21, 38, 48	0
1	C	217/260 (83%)	0.16	1 (0%) 91 93	9, 19, 39, 52	0
1	D	219/260 (84%)	0.20	4 (1%) 68 76	9, 18, 38, 52	0
All	All	884/1040 (85%)	0.20	14 (1%) 72 79	8, 19, 37, 52	0

All (14) RSRZ outliers are listed below:

Mol	Chain	Res	Type	RSRZ
1	D	38	LEU	5.1
1	D	37	LYS	4.4
1	D	255	ALA	3.2
1	B	-2	MET	3.0
1	B	208	GLY	3.0
1	B	34	LYS	2.7
1	A	208	GLY	2.6
1	A	0	SER	2.5
1	B	96	MET	2.4
1	B	184	HIS	2.3
1	C	253	ALA	2.3
1	B	253	ALA	2.2
1	B	0	SER	2.1
1	D	40	LYS	2.1

6.2 Non-standard residues in protein, DNA, RNA chains [i](#)

There are no non-standard protein/DNA/RNA residues in this entry.

6.3 Carbohydrates

There are no monosaccharides in this entry.

6.4 Ligands

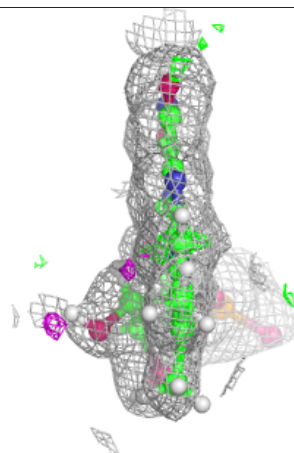
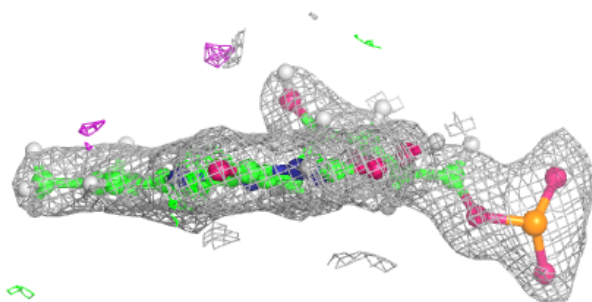
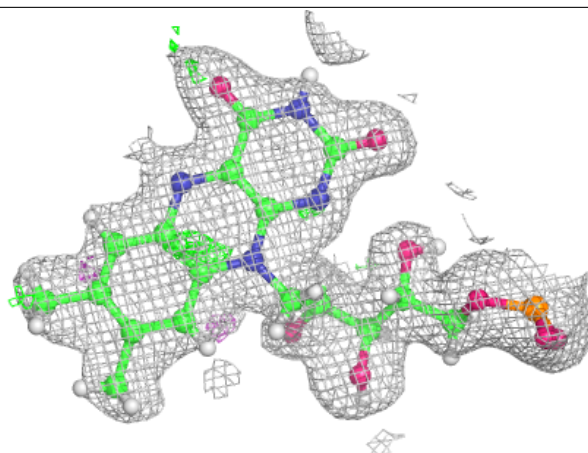
In the following table, the Atoms column lists the number of modelled atoms in the group and the number defined in the chemical component dictionary. The B-factors column lists the minimum, median, 95th percentile and maximum values of B factors of atoms in the group. The column labelled 'Q< 0.9' lists the number of atoms with occupancy less than 0.9.

Mol	Type	Chain	Res	Atoms	RSCC	RSR	B-factors(\AA^2)	Q<0.9
2	FMN	A	300	30/31	0.92	0.13	18,33,41,45	0
2	FMN	B	300	30/31	0.94	0.13	19,27,37,41	0
2	FMN	C	300	30/31	0.94	0.10	19,25,34,34	0
2	FMN	D	301	30/31	0.95	0.11	15,22,31,31	0
3	NA	D	302	1/1	0.99	0.08	16,16,16,16	0

The following is a graphical depiction of the model fit to experimental electron density of all instances of the Ligand of Interest. In addition, ligands with molecular weight > 250 and outliers as shown on the geometry validation Tables will also be included. Each fit is shown from different orientation to approximate a three-dimensional view.

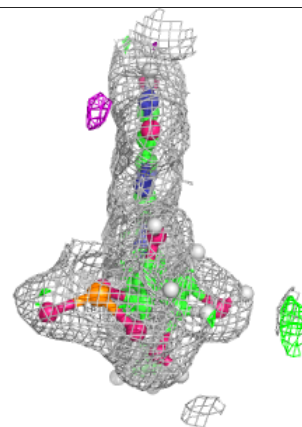
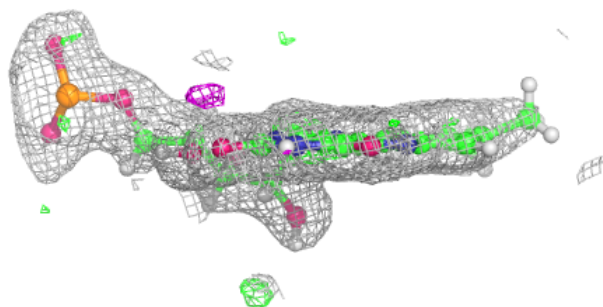
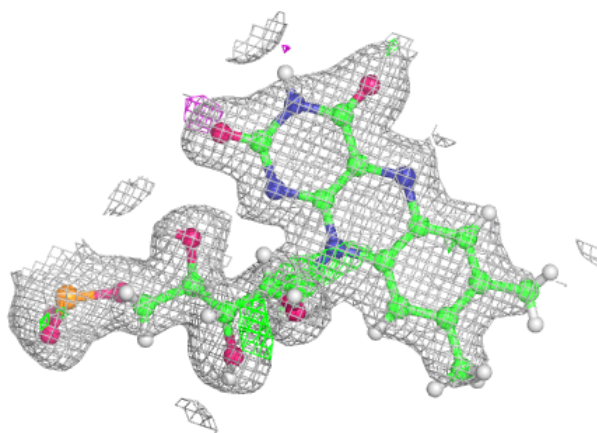
Electron density around FMN A 300:

$2mF_o-DF_c$ (at 0.7 rmsd) in gray
 mF_o-DF_c (at 3 rmsd) in purple (negative)
and green (positive)



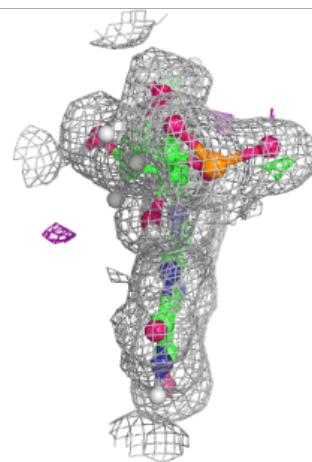
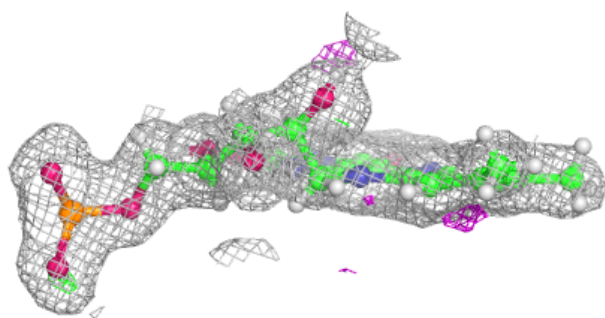
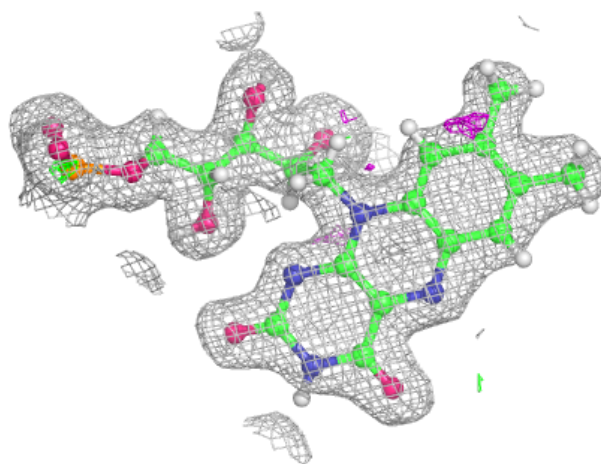
Electron density around FMN B 300:

$2mF_o-DF_c$ (at 0.7 rmsd) in gray
 mF_o-DF_c (at 3 rmsd) in purple (negative)
and green (positive)



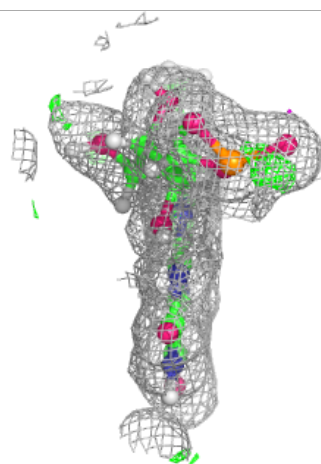
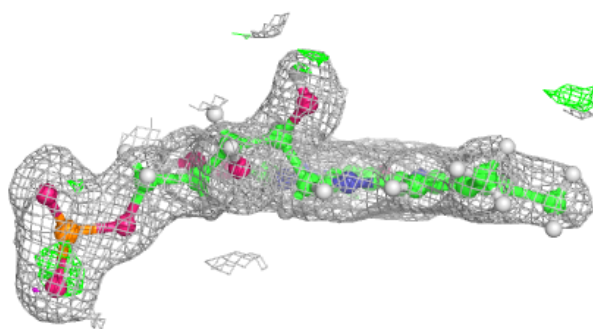
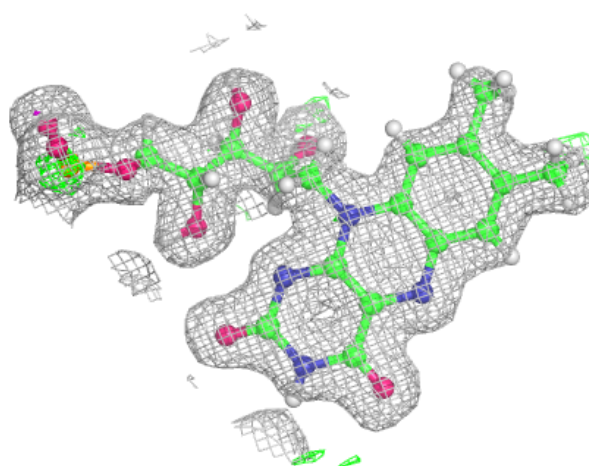
Electron density around FMN C 300:

$2mF_o-DF_c$ (at 0.7 rmsd) in gray
 mF_o-DF_c (at 3 rmsd) in purple (negative)
and green (positive)



Electron density around FMN D 301:

$2mF_o-DF_c$ (at 0.7 rmsd) in gray
 mF_o-DF_c (at 3 rmsd) in purple (negative)
and green (positive)



6.5 Other polymers [i](#)

There are no such residues in this entry.