



wwPDB X-ray Structure Validation Summary Report ⓘ

Jun 18, 2024 – 12:33 PM EDT

PDB ID : 3VI3
Title : Crystal structure of alpha5beta1 integrin headpiece (ligand-free form)
Authors : Nagae, M.; Nogi, T.; Takagi, J.
Deposited on : 2011-09-21
Resolution : 2.90 Å(reported)

This is a wwPDB X-ray Structure Validation Summary Report for a publicly released PDB entry.

We welcome your comments at validation@mail.wwpdb.org

A user guide is available at

<https://www.wwpdb.org/validation/2017/XrayValidationReportHelp>

with specific help available everywhere you see the ⓘ symbol.

The types of validation reports are described at

<http://www.wwpdb.org/validation/2017/FAQs#types>.

The following versions of software and data (see [references ⓘ](#)) were used in the production of this report:

MolProbity : 4.02b-467
Mogul : 2022.3.0, CSD as543be (2022)
Xtriage (Phenix) : 1.20.1
EDS : 2.37.1
Percentile statistics : 20191225.v01 (using entries in the PDB archive December 25th 2019)
Refmac : 5.8.0158
CCP4 : 7.0.044 (Gargrove)
Ideal geometry (proteins) : Engh & Huber (2001)
Ideal geometry (DNA, RNA) : Parkinson et al. (1996)
Validation Pipeline (wwPDB-VP) : 2.37.1

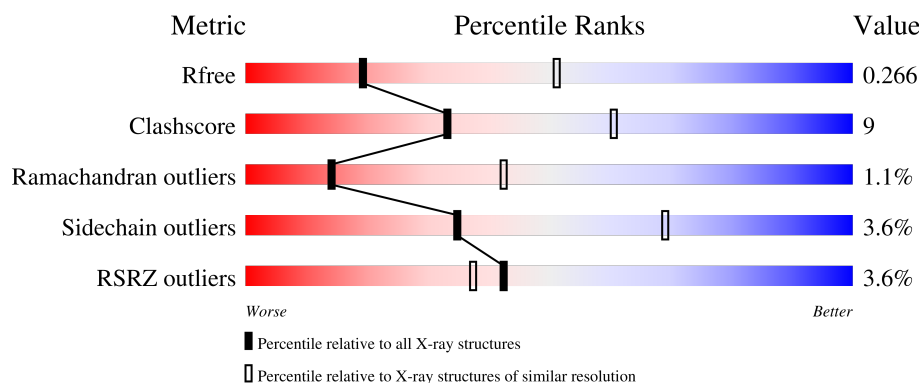
1 Overall quality at a glance

The following experimental techniques were used to determine the structure:

X-RAY DIFFRACTION

The reported resolution of this entry is 2.90 Å.

Percentile scores (ranging between 0-100) for global validation metrics of the entry are shown in the following graphic. The table shows the number of entries on which the scores are based.



Metric	Whole archive (#Entries)	Similar resolution (#Entries, resolution range(Å))
R_{free}	130704	1957 (2.90-2.90)
Clashscore	141614	2172 (2.90-2.90)
Ramachandran outliers	138981	2115 (2.90-2.90)
Sidechain outliers	138945	2117 (2.90-2.90)
RSRZ outliers	127900	1906 (2.90-2.90)

The table below summarises the geometric issues observed across the polymeric chains and their fit to the electron density. The red, orange, yellow and green segments of the lower bar indicate the fraction of residues that contain outliers for ≥ 3 , 2, 1 and 0 types of geometric quality criteria respectively. A grey segment represents the fraction of residues that are not modelled. The numeric value for each fraction is indicated below the corresponding segment, with a dot representing fractions $\leq 5\%$. The upper red bar (where present) indicates the fraction of residues that have poor fit to the electron density. The numeric value is given above the bar.

Mol	Chain	Length	Quality of chain
1	A	632	<div> <div>2%</div> <div> <div></div> <div>73%</div> <div>20%</div> <div>• 5%</div> </div> </div>
1	C	632	<div> <div>5%</div> <div> <div></div> <div>71%</div> <div>21%</div> <div>• 7%</div> </div> </div>
2	B	454	<div> <div>8%</div> <div> <div></div> <div>72%</div> <div>21%</div> <div>• 6%</div> </div> </div>
2	D	454	<div> <div>3%</div> <div> <div></div> <div>75%</div> <div>18%</div> <div>• 5%</div> </div> </div>
3	E	219	<div> <div></div> <div> <div></div> <div>77%</div> <div>21%</div> <div>•</div> </div> </div>

Continued on next page...

Continued from previous page...

Mol	Chain	Length	Quality of chain
3	L	219	
4	F	218	
4	H	218	
5	G	6	
5	K	6	
6	I	2	
6	J	2	

2 Entry composition

There are 9 unique types of molecules in this entry. The entry contains 22803 atoms, of which 0 are hydrogens and 0 are deuteriums.

In the tables below, the ZeroOcc column contains the number of atoms modelled with zero occupancy, the AltConf column contains the number of residues with at least one atom in alternate conformation and the Trace column contains the number of residues modelled with at most 2 atoms.

- Molecule 1 is a protein called Integrin alpha-5.

Mol	Chain	Residues	Atoms					ZeroOcc	AltConf	Trace
1	A	601	Total	C	N	O	S	0	0	0
			4567	2892	768	893	14			
1	C	589	Total	C	N	O	S	0	0	0
			4470	2832	748	876	14			

There are 18 discrepancies between the modelled and reference sequences:

Chain	Residue	Modelled	Actual	Comment	Reference
A	624	GLY	-	expression tag	UNP P08648
A	625	GLY	-	expression tag	UNP P08648
A	626	LEU	-	expression tag	UNP P08648
A	627	GLU	-	expression tag	UNP P08648
A	628	ASN	-	expression tag	UNP P08648
A	629	LEU	-	expression tag	UNP P08648
A	630	TYR	-	expression tag	UNP P08648
A	631	PHE	-	expression tag	UNP P08648
A	632	GLN	-	expression tag	UNP P08648
C	624	GLY	-	expression tag	UNP P08648
C	625	GLY	-	expression tag	UNP P08648
C	626	LEU	-	expression tag	UNP P08648
C	627	GLU	-	expression tag	UNP P08648
C	628	ASN	-	expression tag	UNP P08648
C	629	LEU	-	expression tag	UNP P08648
C	630	TYR	-	expression tag	UNP P08648
C	631	PHE	-	expression tag	UNP P08648
C	632	GLN	-	expression tag	UNP P08648

- Molecule 2 is a protein called Integrin beta-1.

Mol	Chain	Residues	Atoms					ZeroOcc	AltConf	Trace
2	B	427	Total	C	N	O	S	0	0	0
			3327	2082	567	654	24			

Continued on next page...

Continued from previous page...

Mol	Chain	Residues	Atoms					ZeroOcc	AltConf	Trace
2	D	432	Total	C	N	O	S	0	0	0
			3367	2106	574	663	24			

There are 22 discrepancies between the modelled and reference sequences:

Chain	Residue	Modelled	Actual	Comment	Reference
B	92	HIS	THR	SEE REMARK 999	UNP P05556
B	195	THR	SER	SEE REMARK 999	UNP P05556
B	446	GLY	-	expression tag	UNP P05556
B	447	GLY	-	expression tag	UNP P05556
B	448	LEU	-	expression tag	UNP P05556
B	449	GLU	-	expression tag	UNP P05556
B	450	ASN	-	expression tag	UNP P05556
B	451	LEU	-	expression tag	UNP P05556
B	452	TYR	-	expression tag	UNP P05556
B	453	PHE	-	expression tag	UNP P05556
B	454	GLN	-	expression tag	UNP P05556
D	92	HIS	THR	SEE REMARK 999	UNP P05556
D	195	THR	SER	SEE REMARK 999	UNP P05556
D	446	GLY	-	expression tag	UNP P05556
D	447	GLY	-	expression tag	UNP P05556
D	448	LEU	-	expression tag	UNP P05556
D	449	GLU	-	expression tag	UNP P05556
D	450	ASN	-	expression tag	UNP P05556
D	451	LEU	-	expression tag	UNP P05556
D	452	TYR	-	expression tag	UNP P05556
D	453	PHE	-	expression tag	UNP P05556
D	454	GLN	-	expression tag	UNP P05556

- Molecule 3 is a protein called SG/19 Fab fragment (Light chain).

Mol	Chain	Residues	Atoms					ZeroOcc	AltConf	Trace
3	L	219	Total	C	N	O	S	0	0	0
			1701	1066	292	335	8			
3	E	219	Total	C	N	O	S	0	0	0
			1701	1066	292	335	8			

- Molecule 4 is a protein called SG/19 Fab fragment (Heavy chain).

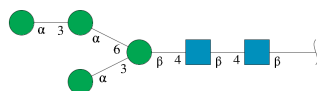
Mol	Chain	Residues	Atoms					ZeroOcc	AltConf	Trace
4	H	218	Total	C	N	O	S	0	0	0
			1651	1051	268	324	8			

Continued on next page...

Continued from previous page...

Mol	Chain	Residues	Atoms					ZeroOcc	AltConf	Trace
4	F	218	Total	C	N	O	S	0	0	0
			1651	1051	268	324	8			

- Molecule 5 is an oligosaccharide called alpha-D-mannopyranose-(1-3)-alpha-D-mannopyranose-(1-6)-[alpha-D-mannopyranose-(1-3)]beta-D-mannopyranose-(1-4)-2-acetamido-2-deoxy-beta-D-glucopyranose-(1-4)-2-acetamido-2-deoxy-beta-D-glucopyranose.



Mol	Chain	Residues	Atoms				ZeroOcc	AltConf	Trace
5	G	6	Total	C	N	O	0	0	0
			72	40	2	30			
5	K	6	Total	C	N	O	0	0	0
			72	40	2	30			

- Molecule 6 is an oligosaccharide called 2-acetamido-2-deoxy-beta-D-glucopyranose-(1-4)-2-acetamido-2-deoxy-beta-D-glucopyranose.

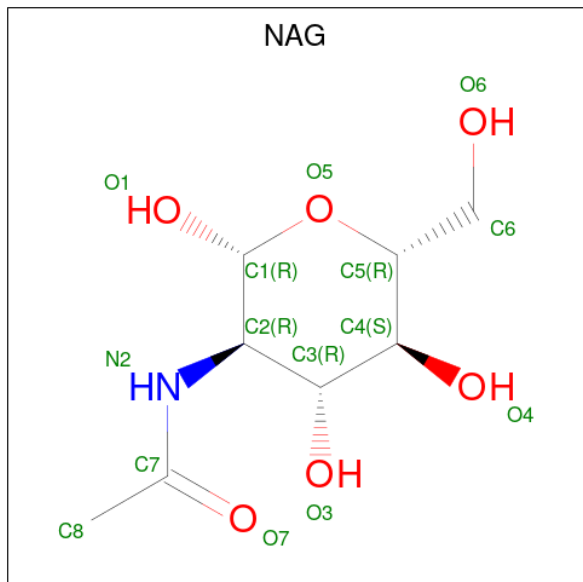


Mol	Chain	Residues	Atoms				ZeroOcc	AltConf	Trace
6	I	2	Total	C	N	O	0	0	0
			28	16	2	10			
6	J	2	Total	C	N	O	0	0	0
			28	16	2	10			

- Molecule 7 is CALCIUM ION (three-letter code: CA) (formula: Ca).

Mol	Chain	Residues	Atoms		ZeroOcc	AltConf
7	A	4	Total	Ca	0	0
			4	4		
7	B	2	Total	Ca	0	0
			2	2		
7	C	4	Total	Ca	0	0
			4	4		
7	D	2	Total	Ca	0	0
			2	2		

- Molecule 8 is 2-acetamido-2-deoxy-beta-D-glucopyranose (three-letter code: NAG) (formula: $C_8H_{15}NO_6$).



Mol	Chain	Residues	Atoms				ZeroOcc	AltConf
8	A	1	Total	C	N	O	0	0
			14	8	1	5		
8	A	1	Total	C	N	O	0	0
			14	8	1	5		
8	A	1	Total	C	N	O	0	0
			14	8	1	5		
8	A	1	Total	C	N	O	0	0
			14	8	1	5		
8	A	1	Total	C	N	O	0	0
			14	8	1	5		
8	B	1	Total	C	N	O	0	0
			14	8	1	5		
8	C	1	Total	C	N	O	0	0
			14	8	1	5		
8	C	1	Total	C	N	O	0	0
			14	8	1	5		
8	C	1	Total	C	N	O	0	0
			14	8	1	5		
8	C	1	Total	C	N	O	0	0
			14	8	1	5		
8	D	1	Total	C	N	O	0	0
			14	8	1	5		

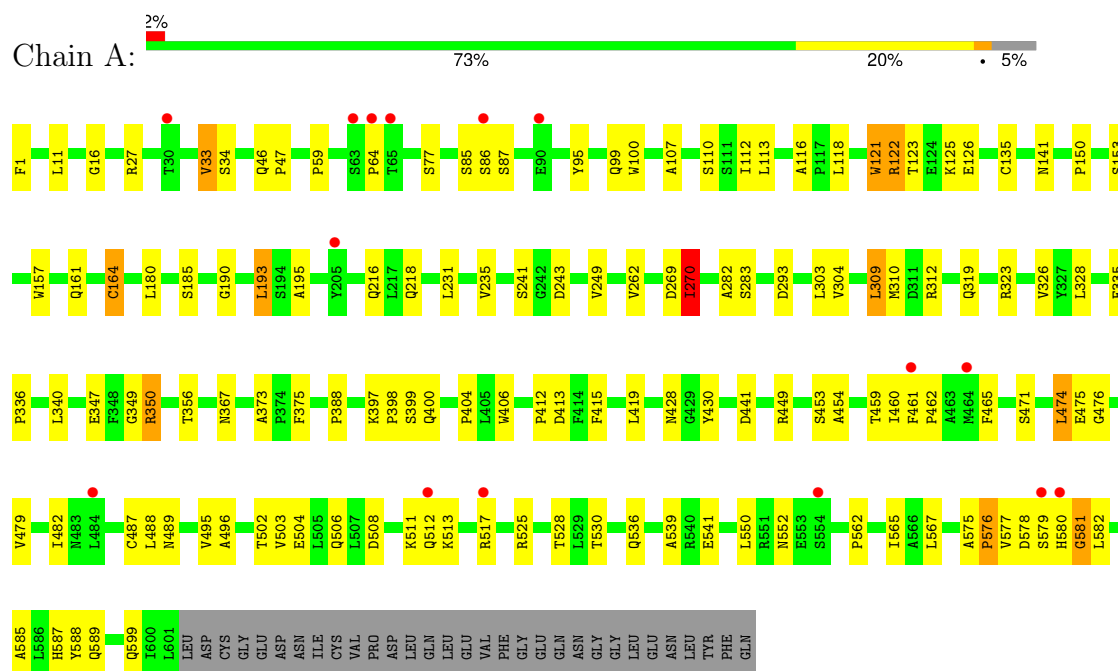
- Molecule 9 is MAGNESIUM ION (three-letter code: MG) (formula: Mg).

Mol	Chain	Residues	Atoms		ZeroOcc	AltConf
9	B	1	Total 1	Mg 1	0	0
9	D	1	Total 1	Mg 1	0	0

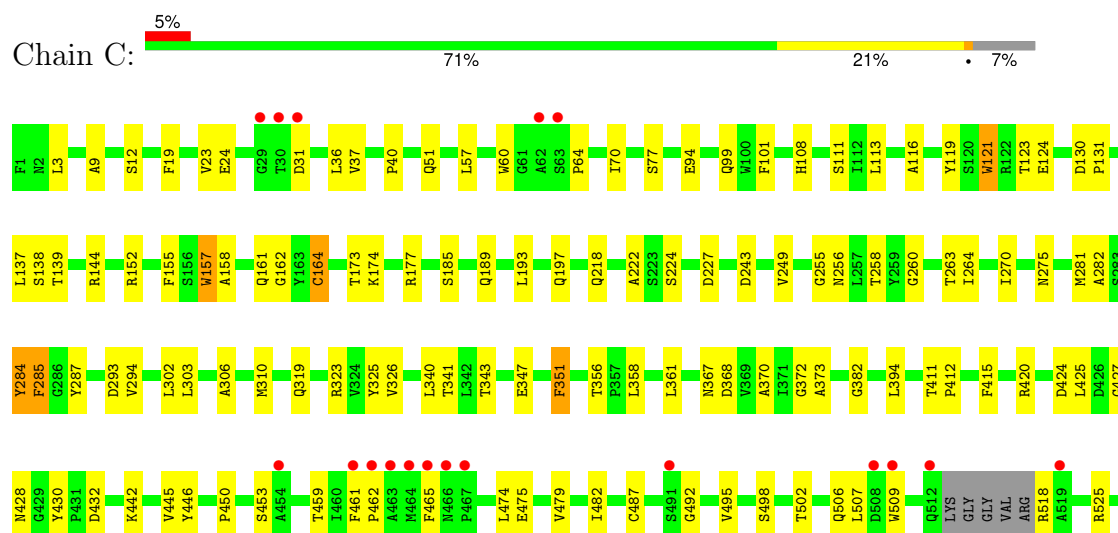
3 Residue-property plots [i](#)

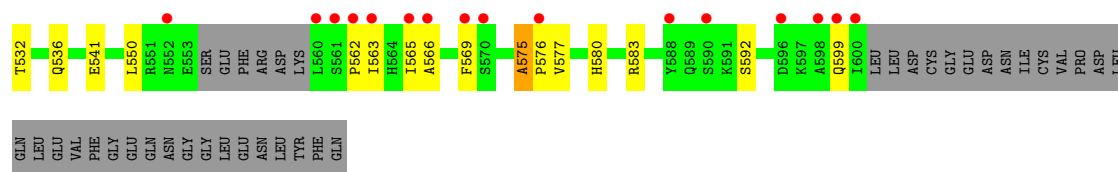
These plots are drawn for all protein, RNA, DNA and oligosaccharide chains in the entry. The first graphic for a chain summarises the proportions of the various outlier classes displayed in the second graphic. The second graphic shows the sequence view annotated by issues in geometry and electron density. Residues are color-coded according to the number of geometric quality criteria for which they contain at least one outlier: green = 0, yellow = 1, orange = 2 and red = 3 or more. A red dot above a residue indicates a poor fit to the electron density ($RSRZ > 2$). Stretches of 2 or more consecutive residues without any outlier are shown as a green connector. Residues present in the sample, but not in the model, are shown in grey.

• Molecule 1: Integrin alpha-5

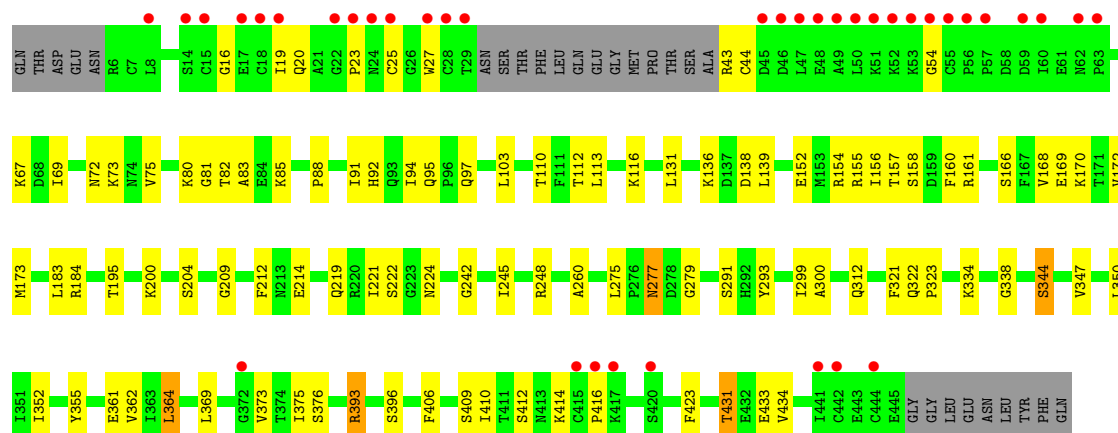


• Molecule 1: Integrin alpha-5

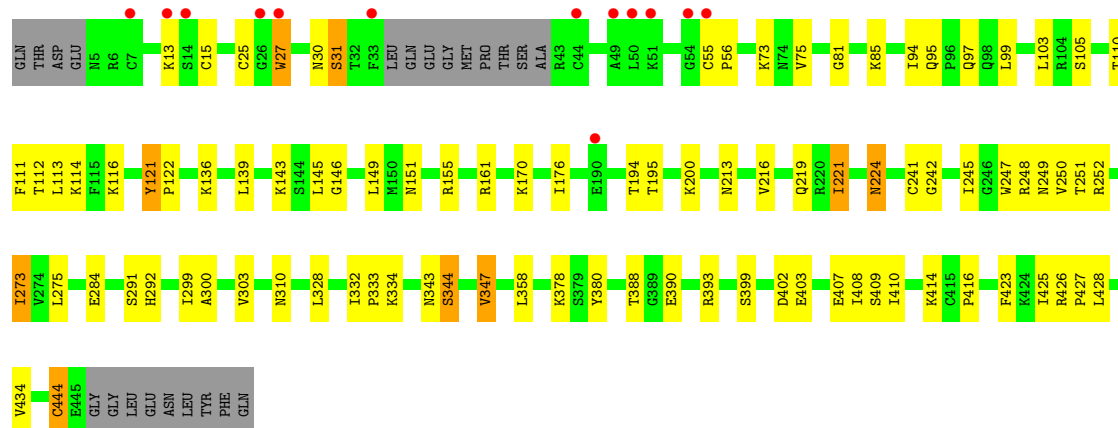
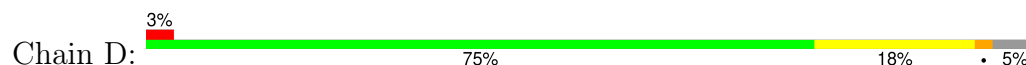




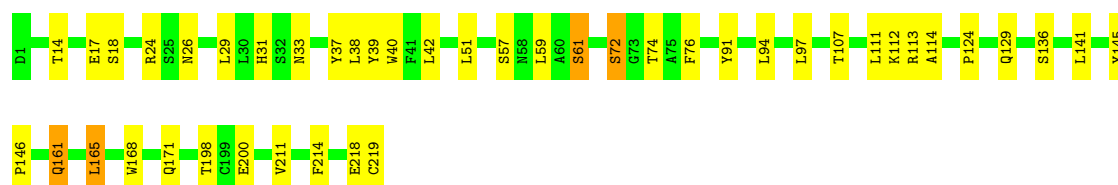
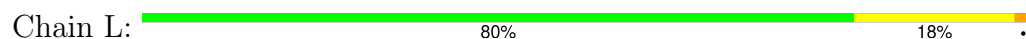
• Molecule 2: Integrin beta-1



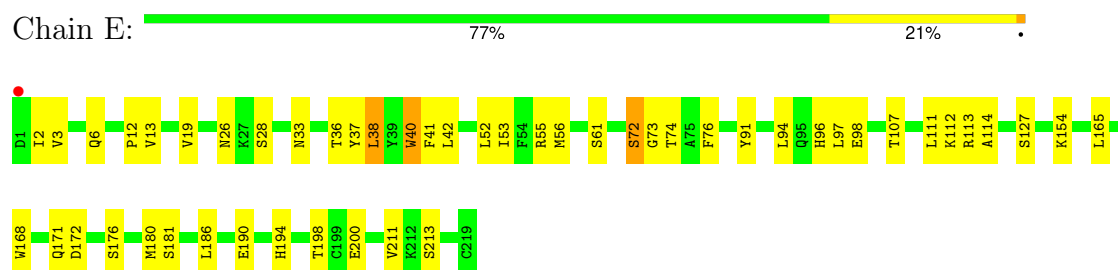
• Molecule 2: Integrin beta-1



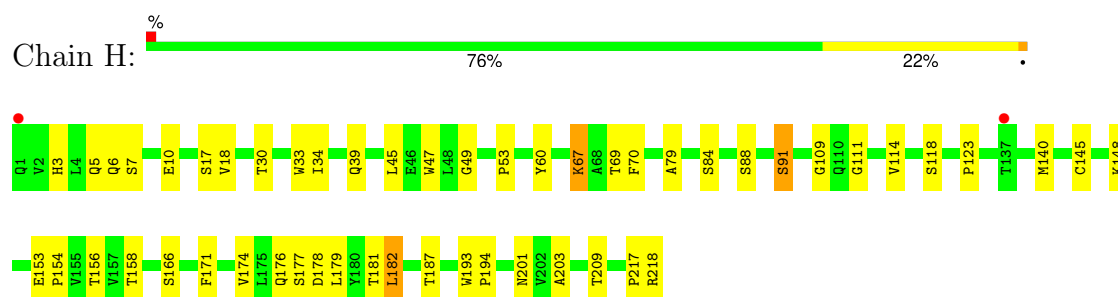
• Molecule 3: SG/19 Fab fragment (Light chain)



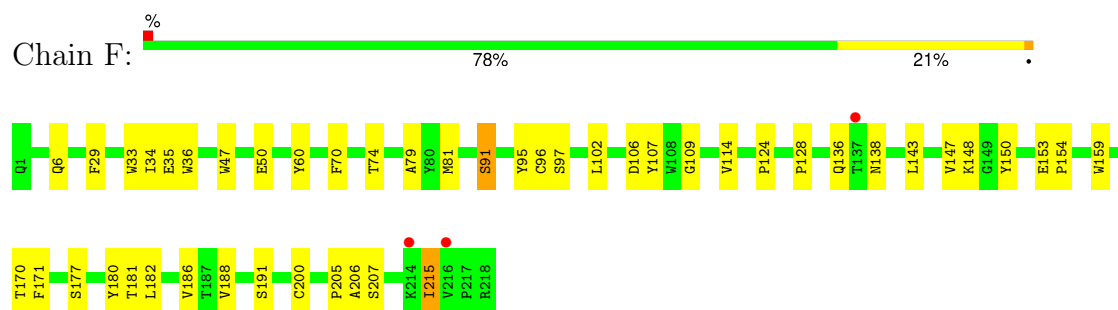
- Molecule 3: SG/19 Fab fragment (Light chain)



- Molecule 4: SG/19 Fab fragment (Heavy chain)



- Molecule 4: SG/19 Fab fragment (Heavy chain)



- Molecule 5: alpha-D-mannopyranose-(1-3)-alpha-D-mannopyranose-(1-6)-[alpha-D-mannopyranose-(1-3)]beta-D-mannopyranose-(1-4)-2-acetamido-2-deoxy-beta-D-glucopyranose-(1-4)-2-acetamido-2-deoxy-beta-D-glucopyranose



- Molecule 5: alpha-D-mannopyranose-(1-3)-alpha-D-mannopyranose-(1-6)-[alpha-D-mannopyranose-(1-3)]beta-D-mannopyranose-(1-4)-2-acetamido-2-deoxy-beta-D-glucopyranose-(1-4)-2-acetamido-2-deoxy-beta-D-glucopyranose




- Molecule 6: 2-acetamido-2-deoxy-beta-D-glucopyranose-(1-4)-2-acetamido-2-deoxy-beta-D-glucopyranose

Chain I:  100%

MAG1
MAG2

- Molecule 6: 2-acetamido-2-deoxy-beta-D-glucopyranose-(1-4)-2-acetamido-2-deoxy-beta-D-glucopyranose

Chain J:  100%

MAG1
MAG2

4 Data and refinement statistics

Property	Value	Source
Space group	P 1	Depositor
Cell constants a, b, c, α , β , γ	92.96Å 102.81Å 125.08Å 76.10° 70.19° 71.28°	Depositor
Resolution (Å)	100.00 – 2.90 46.03 – 2.87	Depositor EDS
% Data completeness (in resolution range)	98.9 (100.00-2.90) 97.5 (46.03-2.87)	Depositor EDS
R_{merge}	(Not available)	Depositor
R_{sym}	0.06	Depositor
$\langle I/\sigma(I) \rangle$ ¹	1.17 (at 2.86Å)	Xtriage
Refinement program	REFMAC 5.6.0117	Depositor
R, R_{free}	0.207 , 0.267 0.206 , 0.266	Depositor DCC
R_{free} test set	4551 reflections (5.00%)	wwPDB-VP
Wilson B-factor (Å ²)	63.6	Xtriage
Anisotropy	0.575	Xtriage
Bulk solvent k_{sol} (e/Å ³), B_{sol} (Å ²)	0.29 , 31.7	EDS
L-test for twinning ²	$\langle L \rangle = 0.51$, $\langle L^2 \rangle = 0.34$	Xtriage
Estimated twinning fraction	No twinning to report.	Xtriage
F_o, F_c correlation	0.94	EDS
Total number of atoms	22803	wwPDB-VP
Average B, all atoms (Å ²)	71.0	wwPDB-VP

Xtriage's analysis on translational NCS is as follows: *The largest off-origin peak in the Patterson function is 3.39% of the height of the origin peak. No significant pseudotranslation is detected.*

¹Intensities estimated from amplitudes.

²Theoretical values of $\langle |L| \rangle$, $\langle L^2 \rangle$ for acentric reflections are 0.5, 0.333 respectively for untwinned datasets, and 0.375, 0.2 for perfectly twinned datasets.

5 Model quality [i](#)

5.1 Standard geometry [i](#)

Bond lengths and bond angles in the following residue types are not validated in this section: CA, NAG, MAN, MG, BMA

The Z score for a bond length (or angle) is the number of standard deviations the observed value is removed from the expected value. A bond length (or angle) with $|Z| > 5$ is considered an outlier worth inspection. RMSZ is the root-mean-square of all Z scores of the bond lengths (or angles).

Mol	Chain	Bond lengths		Bond angles	
		RMSZ	$\# Z > 5$	RMSZ	$\# Z > 5$
1	A	0.46	4/4684 (0.1%)	0.61	0/6374
1	C	0.47	4/4584 (0.1%)	0.63	0/6240
2	B	0.41	1/3384 (0.0%)	0.58	0/4565
2	D	0.43	1/3425 (0.0%)	0.61	0/4621
3	E	0.49	2/1741 (0.1%)	0.63	0/2364
3	L	0.50	2/1741 (0.1%)	0.63	1/2364 (0.0%)
4	F	0.55	0/1698	0.62	0/2323
4	H	0.55	0/1698	0.64	0/2323
All	All	0.47	14/22955 (0.1%)	0.61	1/31174 (0.0%)

Chiral center outliers are detected by calculating the chiral volume of a chiral center and verifying if the center is modelled as a planar moiety or with the opposite hand. A planarity outlier is detected by checking planarity of atoms in a peptide group, atoms in a mainchain group or atoms of a sidechain that are expected to be planar.

Mol	Chain	#Chirality outliers	#Planarity outliers
1	C	0	1

The worst 5 of 14 bond length outliers are listed below:

Mol	Chain	Res	Type	Atoms	Z	Observed(Å)	Ideal(Å)
3	E	168	TRP	CD2-CE2	5.50	1.48	1.41
1	A	100	TRP	CD2-CE2	5.42	1.47	1.41
1	C	509	TRP	CD2-CE2	5.34	1.47	1.41
1	C	157	TRP	CD2-CE2	5.28	1.47	1.41
3	L	168	TRP	CD2-CE2	5.24	1.47	1.41

All (1) bond angle outliers are listed below:

Mol	Chain	Res	Type	Atoms	Z	Observed(°)	Ideal(°)
3	L	94	LEU	CA-CB-CG	6.05	129.23	115.30

There are no chirality outliers.

All (1) planarity outliers are listed below:

Mol	Chain	Res	Type	Group
1	C	155	PHE	Peptide

5.2 Too-close contacts

In the following table, the Non-H and H(model) columns list the number of non-hydrogen atoms and hydrogen atoms in the chain respectively. The H(added) column lists the number of hydrogen atoms added and optimized by MolProbity. The Clashes column lists the number of clashes within the asymmetric unit, whereas Symm-Clashes lists symmetry-related clashes.

Mol	Chain	Non-H	H(model)	H(added)	Clashes	Symm-Clashes
1	A	4567	0	4363	73	0
1	C	4470	0	4259	81	0
2	B	3327	0	3283	69	0
2	D	3367	0	3317	65	0
3	E	1701	0	1649	38	0
3	L	1701	0	1649	28	0
4	F	1651	0	1610	27	0
4	H	1651	0	1610	28	0
5	G	72	0	61	0	0
5	K	72	0	61	0	0
6	I	28	0	25	0	0
6	J	28	0	25	0	0
7	A	4	0	0	0	0
7	B	2	0	0	0	0
7	C	4	0	0	0	0
7	D	2	0	0	0	0
8	A	70	0	65	3	0
8	B	14	0	13	0	0
8	C	56	0	52	0	0
8	D	14	0	13	0	0
9	B	1	0	0	0	0
9	D	1	0	0	0	0
All	All	22803	0	22055	387	0

The all-atom clashscore is defined as the number of clashes found per 1000 atoms (including hydrogen atoms). The all-atom clashscore for this structure is 9.

The worst 5 of 387 close contacts within the same asymmetric unit are listed below, sorted by their clash magnitude.

Atom-1	Atom-2	Interatomic distance (Å)	Clash overlap (Å)
2:B:94:ILE:HD11	2:B:113:LEU:HD21	1.52	0.91
2:D:110:THR:HG22	2:D:409:SER:CB	2.04	0.88
2:D:73:LYS:H	2:D:97:GLN:HE22	1.22	0.86
1:A:123:THR:HG22	1:A:126:GLU:O	1.76	0.84
1:C:99:GLN:HG3	1:C:116:ALA:HB1	1.59	0.84

There are no symmetry-related clashes.

5.3 Torsion angles [i](#)

5.3.1 Protein backbone [i](#)

In the following table, the Percentiles column shows the percent Ramachandran outliers of the chain as a percentile score with respect to all X-ray entries followed by that with respect to entries of similar resolution.

The Analysed column shows the number of residues for which the backbone conformation was analysed, and the total number of residues.

Mol	Chain	Analysed	Favoured	Allowed	Outliers	Percentiles	
1	A	599/632 (95%)	538 (90%)	53 (9%)	8 (1%)	12	37
1	C	583/632 (92%)	515 (88%)	59 (10%)	9 (2%)	10	34
2	B	423/454 (93%)	380 (90%)	39 (9%)	4 (1%)	17	48
2	D	428/454 (94%)	381 (89%)	42 (10%)	5 (1%)	13	40
3	E	217/219 (99%)	210 (97%)	6 (3%)	1 (0%)	29	61
3	L	217/219 (99%)	204 (94%)	11 (5%)	2 (1%)	17	48
4	F	216/218 (99%)	192 (89%)	23 (11%)	1 (0%)	29	61
4	H	216/218 (99%)	198 (92%)	16 (7%)	2 (1%)	17	48
All	All	2899/3046 (95%)	2618 (90%)	249 (9%)	32 (1%)	14	42

5 of 32 Ramachandran outliers are listed below:

Mol	Chain	Res	Type
1	A	86	SER
2	B	416	PRO
1	C	256	ASN

Continued on next page...

Continued from previous page...

Mol	Chain	Res	Type
1	C	285	PHE
1	C	575	ALA

5.3.2 Protein sidechains ⓘ

In the following table, the Percentiles column shows the percent sidechain outliers of the chain as a percentile score with respect to all X-ray entries followed by that with respect to entries of similar resolution.

The Analysed column shows the number of residues for which the sidechain conformation was analysed, and the total number of residues.

Mol	Chain	Analysed	Rotameric	Outliers	Percentiles	
1	A	486/513 (95%)	464 (96%)	22 (4%)	27	61
1	C	476/513 (93%)	465 (98%)	11 (2%)	50	80
2	B	379/402 (94%)	367 (97%)	12 (3%)	39	73
2	D	384/402 (96%)	368 (96%)	16 (4%)	30	63
3	E	194/194 (100%)	187 (96%)	7 (4%)	35	69
3	L	194/194 (100%)	187 (96%)	7 (4%)	35	69
4	F	186/186 (100%)	180 (97%)	6 (3%)	39	73
4	H	186/186 (100%)	177 (95%)	9 (5%)	25	58
All	All	2485/2590 (96%)	2395 (96%)	90 (4%)	35	69

5 of 90 residues with a non-rotameric sidechain are listed below:

Mol	Chain	Res	Type
2	D	344	SER
4	H	88	SER
2	D	393	ARG
3	L	161	GLN
4	H	166	SER

Sometimes sidechains can be flipped to improve hydrogen bonding and reduce clashes. 5 of 46 such sidechains are listed below:

Mol	Chain	Res	Type
2	D	151	ASN
3	L	129	GLN
2	D	213	ASN

Continued on next page...

Continued from previous page...

Mol	Chain	Res	Type
2	D	312	GLN
4	H	5	GLN

5.3.3 RNA ⓘ

There are no RNA molecules in this entry.

5.4 Non-standard residues in protein, DNA, RNA chains ⓘ

There are no non-standard protein/DNA/RNA residues in this entry.

5.5 Carbohydrates ⓘ

16 monosaccharides are modelled in this entry.

In the following table, the Counts columns list the number of bonds (or angles) for which Mogul statistics could be retrieved, the number of bonds (or angles) that are observed in the model and the number of bonds (or angles) that are defined in the Chemical Component Dictionary. The Link column lists molecule types, if any, to which the group is linked. The Z score for a bond length (or angle) is the number of standard deviations the observed value is removed from the expected value. A bond length (or angle) with $|Z| > 2$ is considered an outlier worth inspection. RMSZ is the root-mean-square of all Z scores of the bond lengths (or angles).

Mol	Type	Chain	Res	Link	Bond lengths			Bond angles		
					Counts	RMSZ	$\# Z > 2$	Counts	RMSZ	$\# Z > 2$
5	NAG	G	1	1,5	14,14,15	0.78	0	17,19,21	1.12	1 (5%)
5	NAG	G	2	5	14,14,15	0.61	0	17,19,21	2.45	5 (29%)
5	BMA	G	3	5	11,11,12	0.39	0	15,15,17	0.59	0
5	MAN	G	4	5	11,11,12	0.59	0	15,15,17	1.05	2 (13%)
5	MAN	G	5	5	11,11,12	0.63	0	15,15,17	1.03	1 (6%)
5	MAN	G	6	5	11,11,12	0.61	0	15,15,17	0.71	0
6	NAG	I	1	2,6	14,14,15	0.55	0	17,19,21	0.74	0
6	NAG	I	2	6	14,14,15	0.53	0	17,19,21	0.84	0
6	NAG	J	1	1,6	14,14,15	0.59	0	17,19,21	1.10	1 (5%)
6	NAG	J	2	6	14,14,15	0.52	0	17,19,21	0.97	1 (5%)
5	NAG	K	1	1,5	14,14,15	0.63	0	17,19,21	1.28	3 (17%)
5	NAG	K	2	5	14,14,15	0.52	0	17,19,21	2.94	4 (23%)
5	BMA	K	3	5	11,11,12	0.43	0	15,15,17	0.99	1 (6%)
5	MAN	K	4	5	11,11,12	0.67	0	15,15,17	1.43	3 (20%)

Mol	Type	Chain	Res	Link	Bond lengths			Bond angles		
					Counts	RMSZ	# Z > 2	Counts	RMSZ	# Z > 2
5	MAN	K	5	5	11,11,12	0.55	0	15,15,17	1.21	1 (6%)
5	MAN	K	6	5	11,11,12	0.69	0	15,15,17	1.17	2 (13%)

In the following table, the Chirals column lists the number of chiral outliers, the number of chiral centers analysed, the number of these observed in the model and the number defined in the Chemical Component Dictionary. Similar counts are reported in the Torsion and Rings columns. '-' means no outliers of that kind were identified.

Mol	Type	Chain	Res	Link	Chirals	Torsions	Rings
5	NAG	G	1	1,5	-	0/6/23/26	0/1/1/1
5	NAG	G	2	5	-	1/6/23/26	0/1/1/1
5	BMA	G	3	5	-	0/2/19/22	0/1/1/1
5	MAN	G	4	5	-	0/2/19/22	0/1/1/1
5	MAN	G	5	5	-	2/2/19/22	0/1/1/1
5	MAN	G	6	5	-	2/2/19/22	0/1/1/1
6	NAG	I	1	2,6	-	0/6/23/26	0/1/1/1
6	NAG	I	2	6	-	1/6/23/26	0/1/1/1
6	NAG	J	1	1,6	-	0/6/23/26	0/1/1/1
6	NAG	J	2	6	-	2/6/23/26	0/1/1/1
5	NAG	K	1	1,5	-	2/6/23/26	0/1/1/1
5	NAG	K	2	5	-	3/6/23/26	0/1/1/1
5	BMA	K	3	5	-	0/2/19/22	0/1/1/1
5	MAN	K	4	5	-	2/2/19/22	0/1/1/1
5	MAN	K	5	5	-	1/2/19/22	0/1/1/1
5	MAN	K	6	5	-	2/2/19/22	0/1/1/1

There are no bond length outliers.

The worst 5 of 25 bond angle outliers are listed below:

Mol	Chain	Res	Type	Atoms	Z	Observed(°)	Ideal(°)
5	K	2	NAG	C1-O5-C5	6.95	121.51	112.19
5	G	2	NAG	C2-N2-C7	6.41	131.50	122.90
5	K	2	NAG	C2-N2-C7	6.27	131.31	122.90
5	K	2	NAG	C4-C3-C2	-5.89	102.39	111.02
5	G	2	NAG	C4-C3-C2	-5.81	102.50	111.02

There are no chirality outliers.

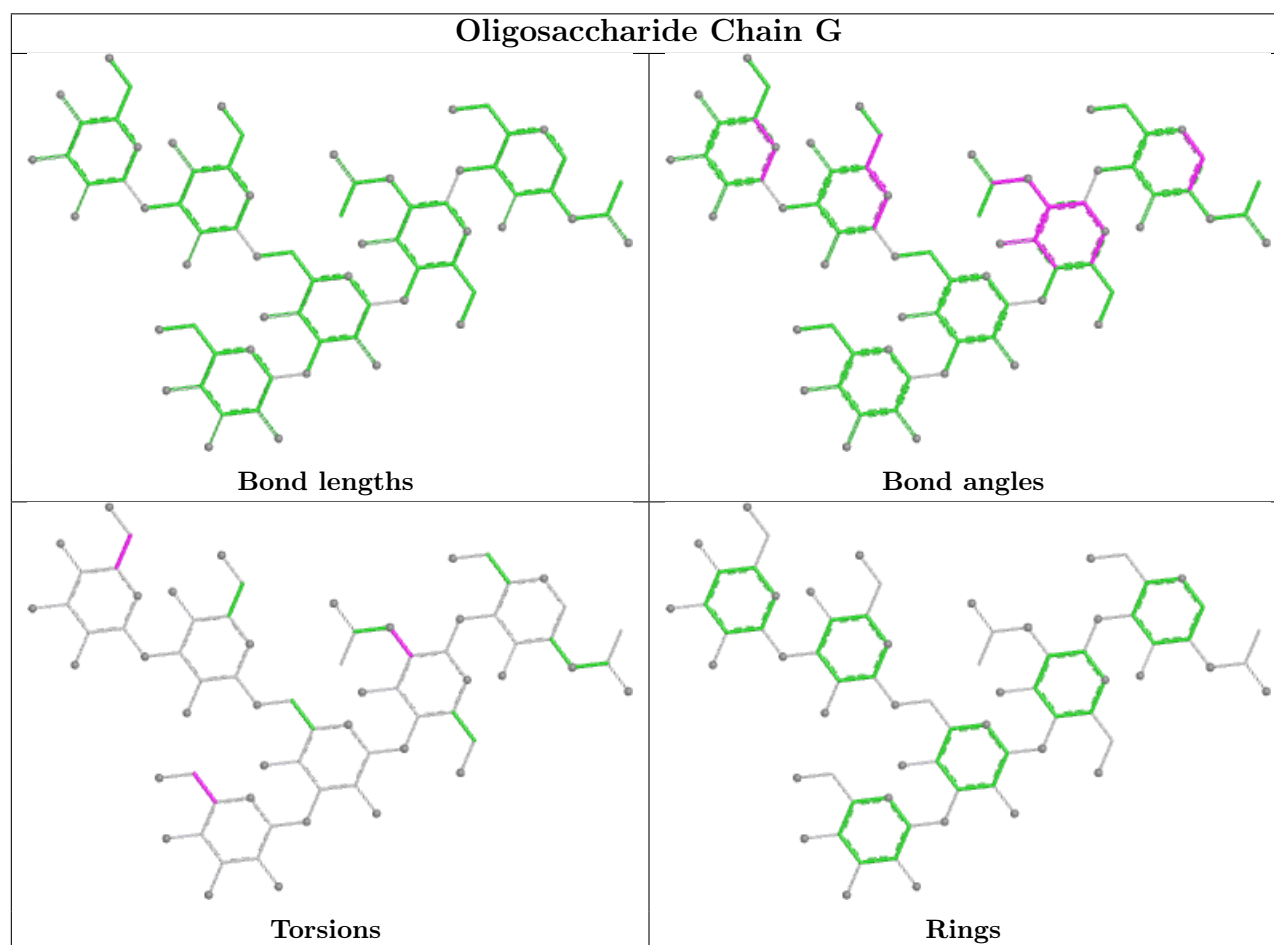
5 of 18 torsion outliers are listed below:

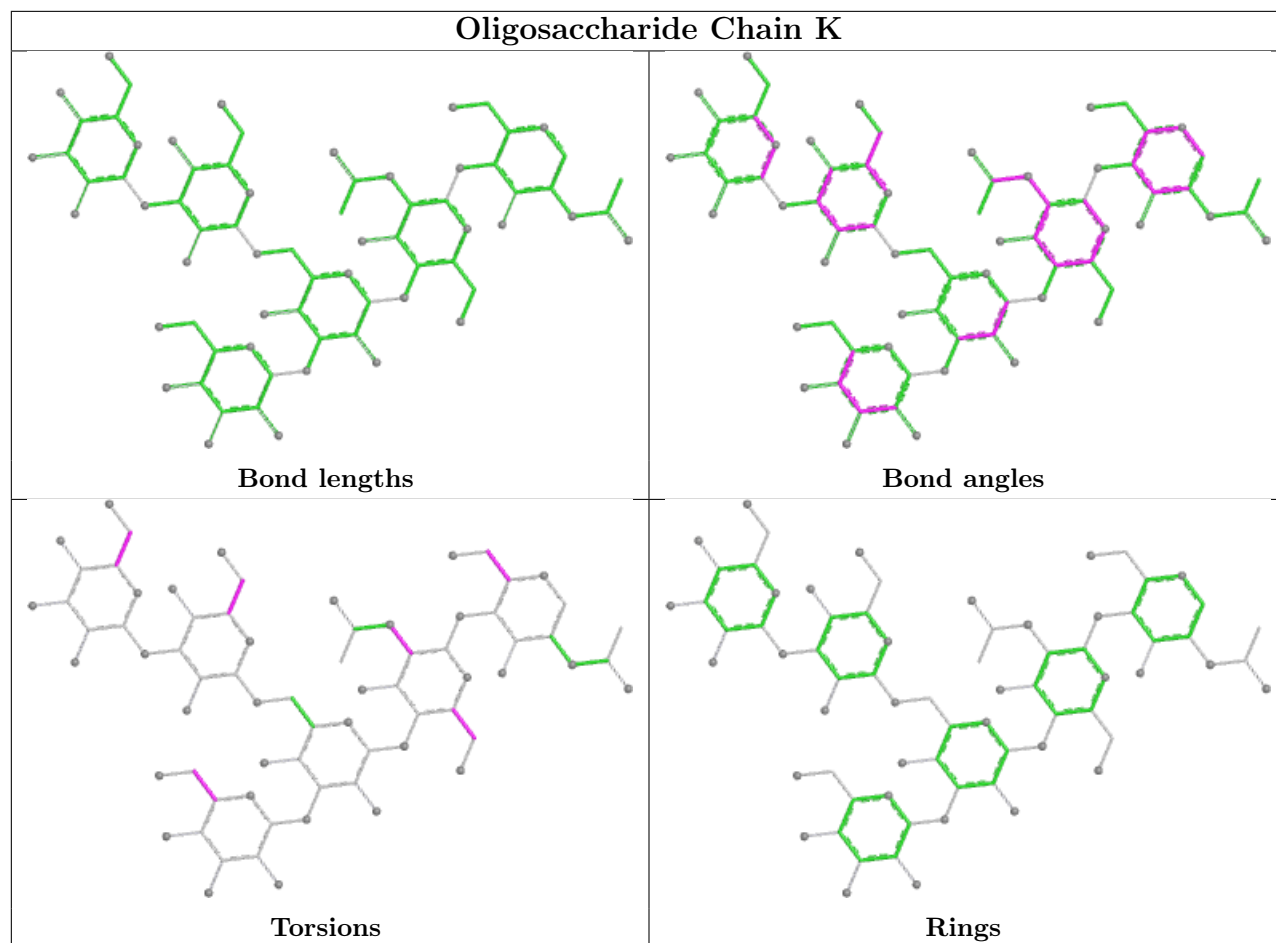
Mol	Chain	Res	Type	Atoms
6	J	2	NAG	O5-C5-C6-O6
5	K	6	MAN	O5-C5-C6-O6
5	G	6	MAN	O5-C5-C6-O6
5	K	2	NAG	O5-C5-C6-O6
5	K	6	MAN	C4-C5-C6-O6

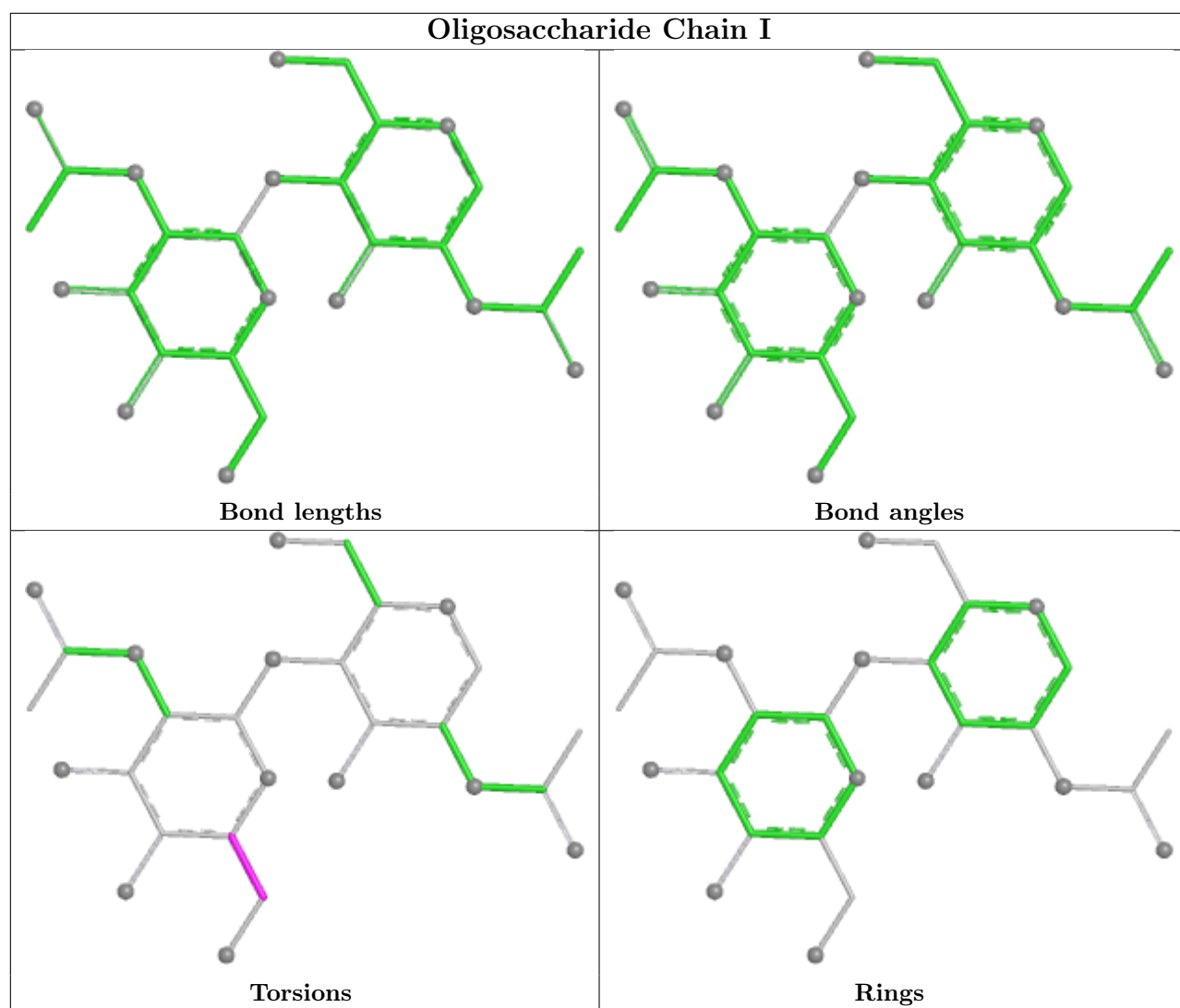
There are no ring outliers.

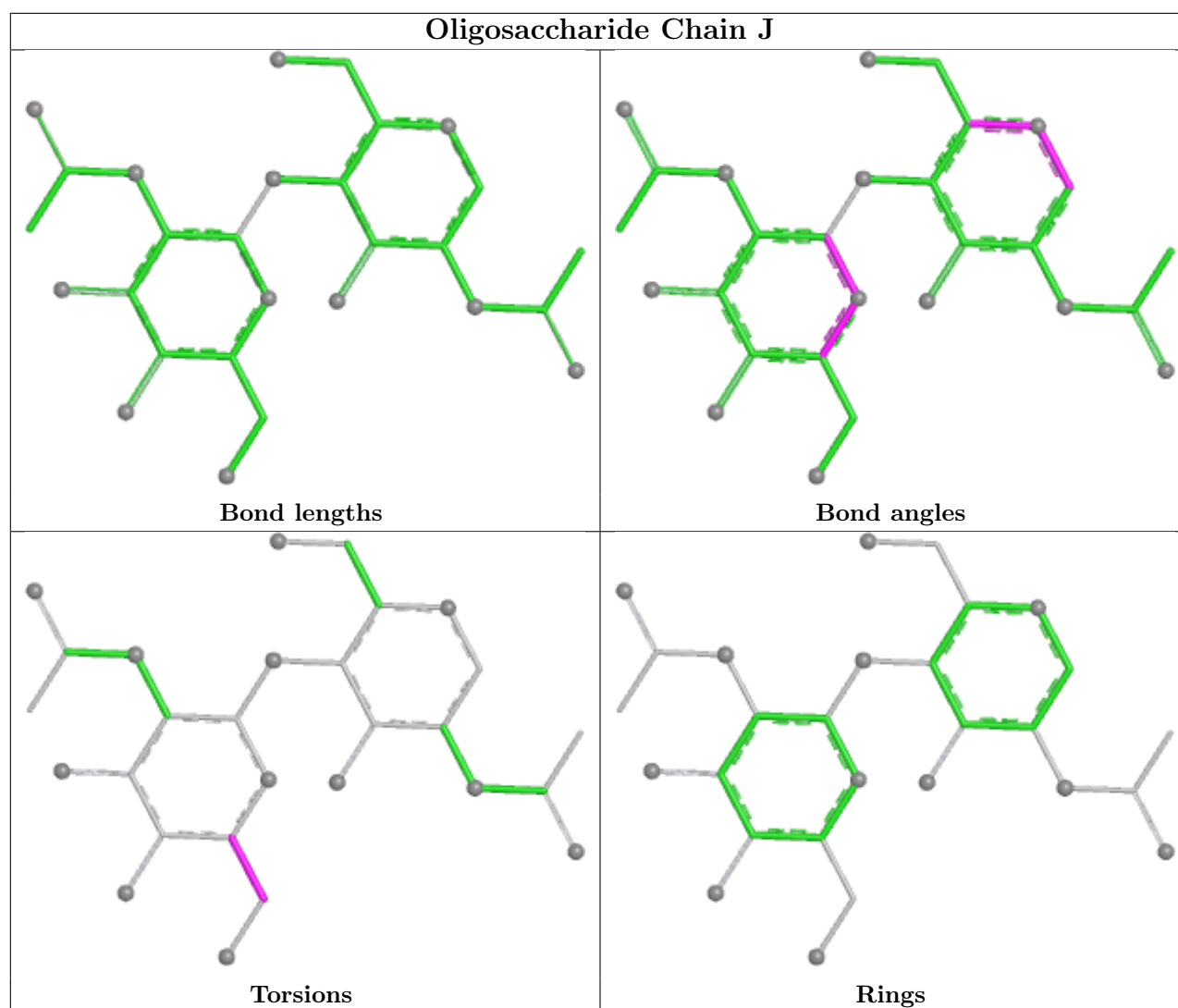
No monomer is involved in short contacts.

The following is a two-dimensional graphical depiction of Mogul quality analysis of bond lengths, bond angles, torsion angles, and ring geometry for oligosaccharide.









5.6 Ligand geometry [i](#)

Of 25 ligands modelled in this entry, 14 are monoatomic - leaving 11 for Mogul analysis.

In the following table, the Counts columns list the number of bonds (or angles) for which Mogul statistics could be retrieved, the number of bonds (or angles) that are observed in the model and the number of bonds (or angles) that are defined in the Chemical Component Dictionary. The Link column lists molecule types, if any, to which the group is linked. The Z score for a bond length (or angle) is the number of standard deviations the observed value is removed from the expected value. A bond length (or angle) with $|Z| > 2$ is considered an outlier worth inspection. RMSZ is the root-mean-square of all Z scores of the bond lengths (or angles).

Mol	Type	Chain	Res	Link	Bond lengths			Bond angles		
					Counts	RMSZ	$\# Z > 2$	Counts	RMSZ	$\# Z > 2$
8	NAG	A	2005	1	14,14,15	0.56	0	17,19,21	0.94	0
8	NAG	A	2015	1	14,14,15	0.44	0	17,19,21	1.83	1 (5%)
8	NAG	C	2008	1	14,14,15	0.53	0	17,19,21	1.16	1 (5%)

Mol	Type	Chain	Res	Link	Bond lengths			Bond angles		
					Counts	RMSZ	# Z > 2	Counts	RMSZ	# Z > 2
8	NAG	C	2007	1	14,14,15	0.51	0	17,19,21	1.04	1 (5%)
8	NAG	A	2008	1	14,14,15	0.37	0	17,19,21	1.91	2 (11%)
8	NAG	C	2016	1	14,14,15	0.44	0	17,19,21	1.30	1 (5%)
8	NAG	A	2006	1	14,14,15	0.49	0	17,19,21	0.97	1 (5%)
8	NAG	A	2007	1	14,14,15	0.46	0	17,19,21	0.96	0
8	NAG	B	2004	2	14,14,15	0.54	0	17,19,21	1.20	1 (5%)
8	NAG	D	2004	2	14,14,15	0.48	0	17,19,21	1.16	1 (5%)
8	NAG	C	2009	1	14,14,15	0.61	0	17,19,21	0.95	0

In the following table, the Chirals column lists the number of chiral outliers, the number of chiral centers analysed, the number of these observed in the model and the number defined in the Chemical Component Dictionary. Similar counts are reported in the Torsion and Rings columns. '-' means no outliers of that kind were identified.

Mol	Type	Chain	Res	Link	Chirals	Torsions	Rings
8	NAG	A	2005	1	-	2/6/23/26	0/1/1/1
8	NAG	A	2015	1	-	2/6/23/26	0/1/1/1
8	NAG	C	2008	1	-	0/6/23/26	0/1/1/1
8	NAG	C	2007	1	-	1/6/23/26	0/1/1/1
8	NAG	A	2008	1	-	0/6/23/26	0/1/1/1
8	NAG	C	2016	1	-	2/6/23/26	0/1/1/1
8	NAG	A	2006	1	-	1/6/23/26	0/1/1/1
8	NAG	A	2007	1	-	0/6/23/26	0/1/1/1
8	NAG	B	2004	2	-	1/6/23/26	0/1/1/1
8	NAG	D	2004	2	-	0/6/23/26	0/1/1/1
8	NAG	C	2009	1	-	2/6/23/26	0/1/1/1

There are no bond length outliers.

The worst 5 of 9 bond angle outliers are listed below:

Mol	Chain	Res	Type	Atoms	Z	Observed(°)	Ideal(°)
8	A	2008	NAG	C1-O5-C5	6.47	120.86	112.19
8	A	2015	NAG	C1-O5-C5	6.38	120.73	112.19
8	C	2016	NAG	C1-O5-C5	4.32	117.98	112.19
8	C	2008	NAG	C1-O5-C5	4.06	117.62	112.19
8	B	2004	NAG	C1-O5-C5	3.87	117.38	112.19

There are no chirality outliers.

5 of 11 torsion outliers are listed below:

Mol	Chain	Res	Type	Atoms
8	C	2009	NAG	O5-C5-C6-O6
8	A	2015	NAG	C4-C5-C6-O6
8	C	2009	NAG	C4-C5-C6-O6
8	A	2015	NAG	O5-C5-C6-O6
8	C	2016	NAG	O5-C5-C6-O6

There are no ring outliers.

1 monomer is involved in 3 short contacts:

Mol	Chain	Res	Type	Clashes	Symm-Clashes
8	A	2008	NAG	3	0

5.7 Other polymers [i](#)

There are no such residues in this entry.

5.8 Polymer linkage issues [i](#)

There are no chain breaks in this entry.

6 Fit of model and data [i](#)

6.1 Protein, DNA and RNA chains [i](#)

In the following table, the column labelled ‘#RSRZ > 2’ contains the number (and percentage) of RSRZ outliers, followed by percent RSRZ outliers for the chain as percentile scores relative to all X-ray entries and entries of similar resolution. The OWAB column contains the minimum, median, 95th percentile and maximum values of the occupancy-weighted average B-factor per residue. The column labelled ‘Q < 0.9’ lists the number of (and percentage) of residues with an average occupancy less than 0.9.

Mol	Chain	Analysed	<RSRZ>	#RSRZ>2	OWAB(Å ²)	Q<0.9
1	A	601/632 (95%)	-0.12	15 (2%) 57 55	44, 68, 119, 155	0
1	C	589/632 (93%)	0.08	34 (5%) 23 19	40, 67, 140, 189	0
2	B	427/454 (94%)	0.10	38 (8%) 9 7	43, 66, 161, 185	0
2	D	432/454 (95%)	-0.15	13 (3%) 50 45	40, 59, 136, 158	0
3	E	219/219 (100%)	-0.42	1 (0%) 91 91	47, 64, 84, 97	0
3	L	219/219 (100%)	-0.47	0 100 100	40, 57, 77, 91	0
4	F	218/218 (100%)	-0.39	3 (1%) 75 75	44, 67, 101, 117	0
4	H	218/218 (100%)	-0.46	2 (0%) 84 84	38, 60, 99, 117	0
All	All	2923/3046 (95%)	-0.15	106 (3%) 42 37	38, 64, 127, 189	0

The worst 5 of 106 RSRZ outliers are listed below:

Mol	Chain	Res	Type	RSRZ
2	B	28	CYS	10.5
2	B	60	ILE	7.1
1	C	465	PHE	6.8
1	C	509	TRP	6.7
2	B	54	GLY	6.5

6.2 Non-standard residues in protein, DNA, RNA chains [i](#)

There are no non-standard protein/DNA/RNA residues in this entry.

6.3 Carbohydrates [i](#)

In the following table, the Atoms column lists the number of modelled atoms in the group and the number defined in the chemical component dictionary. The B-factors column lists the minimum,

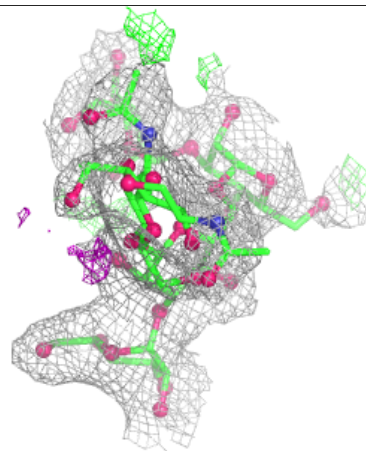
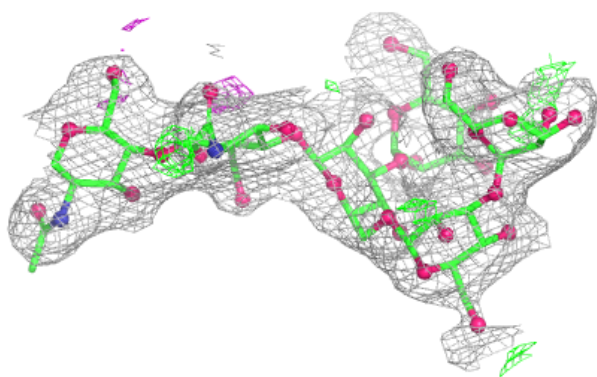
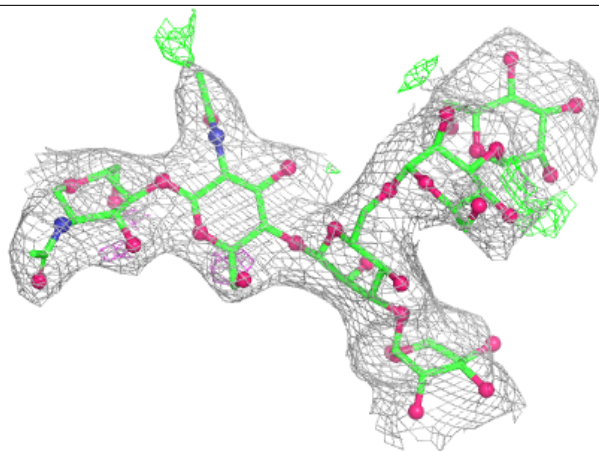
median, 95th percentile and maximum values of B factors of atoms in the group. The column labelled 'Q< 0.9' lists the number of atoms with occupancy less than 0.9.

Mol	Type	Chain	Res	Atoms	RSCC	RSR	B-factors(Å ²)	Q<0.9
5	MAN	G	6	11/12	0.80	0.18	88,100,105,105	0
5	MAN	K	6	11/12	0.81	0.13	69,84,89,90	0
6	NAG	J	2	14/15	0.83	0.33	108,116,118,121	0
5	MAN	G	4	11/12	0.85	0.16	98,101,108,108	0
6	NAG	I	2	14/15	0.85	0.27	97,105,111,113	0
5	MAN	K	4	11/12	0.85	0.14	80,85,91,94	0
5	MAN	K	5	11/12	0.86	0.16	77,85,95,96	0
6	NAG	J	1	14/15	0.89	0.15	74,82,90,100	0
5	MAN	G	5	11/12	0.92	0.09	78,85,91,92	0
5	NAG	G	2	14/15	0.92	0.14	58,63,70,71	0
5	BMA	K	3	11/12	0.94	0.10	66,73,76,77	0
5	BMA	G	3	11/12	0.94	0.09	75,83,90,92	0
6	NAG	I	1	14/15	0.94	0.13	74,81,87,92	0
5	NAG	G	1	14/15	0.95	0.12	53,56,65,66	0
5	NAG	K	2	14/15	0.96	0.12	55,59,64,71	0
5	NAG	K	1	14/15	0.98	0.10	50,54,59,59	0

The following is a graphical depiction of the model fit to experimental electron density for oligosaccharide. Each fit is shown from different orientation to approximate a three-dimensional view.

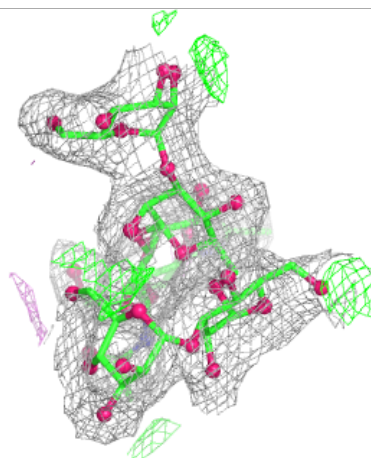
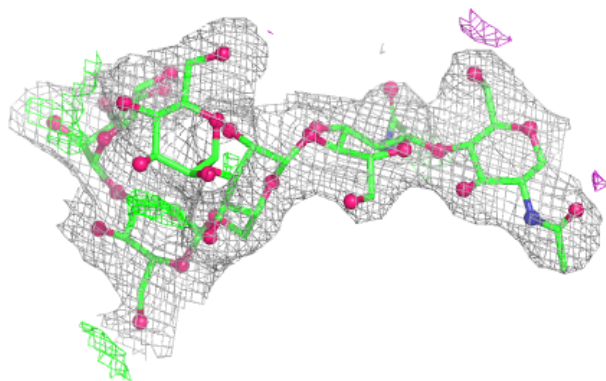
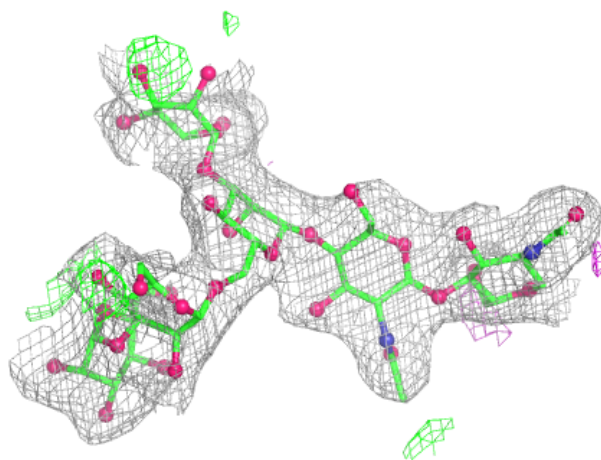
Electron density around Chain G:

$2mF_o - DF_c$ (at 0.7 rmsd) in gray
 $mF_o - DF_c$ (at 3 rmsd) in purple (negative)
and green (positive)



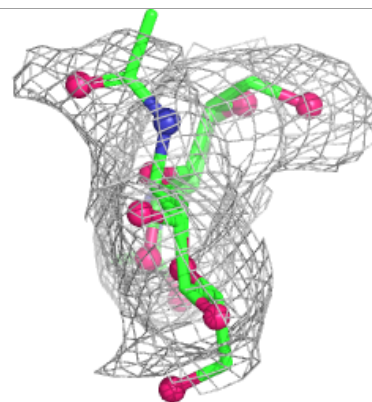
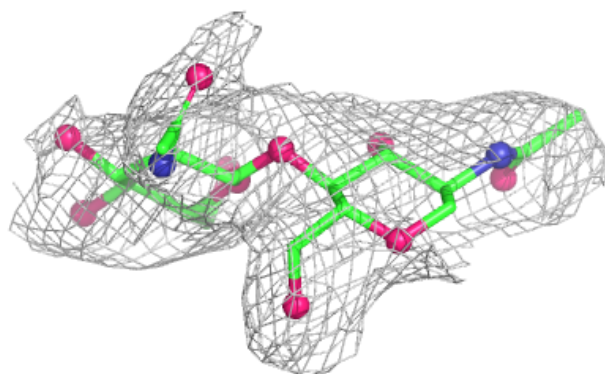
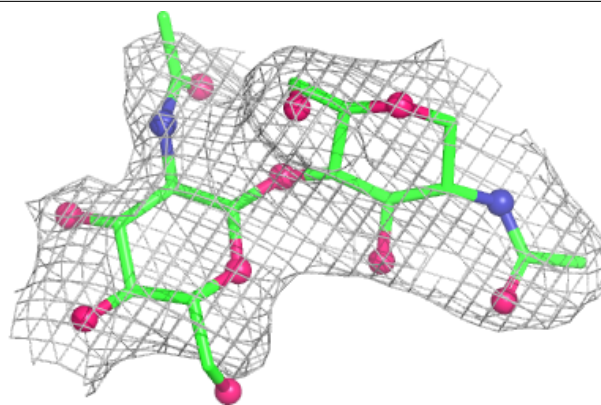
Electron density around Chain K:

$2mF_o-DF_c$ (at 0.7 rmsd) in gray
 mF_o-DF_c (at 3 rmsd) in purple (negative)
and green (positive)

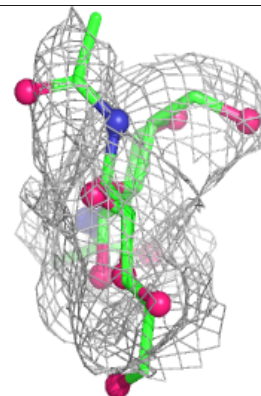
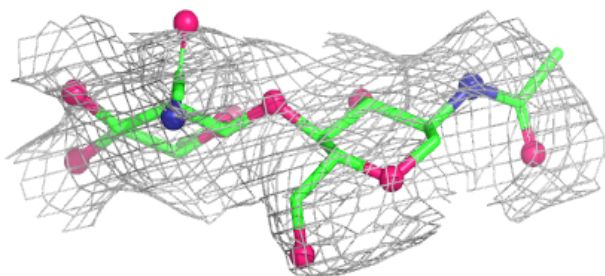
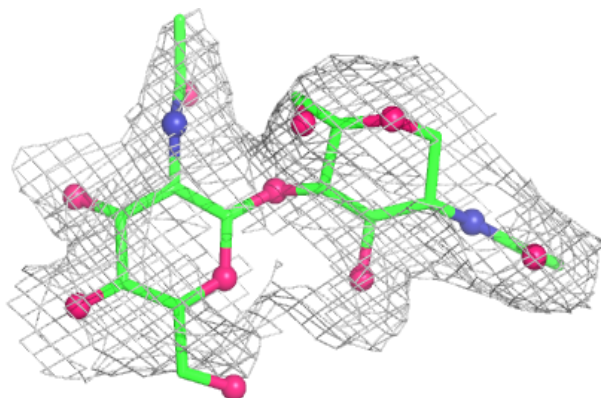


Electron density around Chain I:

$2mF_o-DF_c$ (at 0.7 rmsd) in gray
 mF_o-DF_c (at 3 rmsd) in purple (negative)
and green (positive)

**Electron density around Chain J:**

$2mF_o-DF_c$ (at 0.7 rmsd) in gray
 mF_o-DF_c (at 3 rmsd) in purple (negative)
and green (positive)



6.4 Ligands

In the following table, the Atoms column lists the number of modelled atoms in the group and the number defined in the chemical component dictionary. The B-factors column lists the minimum, median, 95th percentile and maximum values of B factors of atoms in the group. The column labelled 'Q<0.9' lists the number of atoms with occupancy less than 0.9.

Mol	Type	Chain	Res	Atoms	RSCC	RSR	B-factors(\AA^2)	Q<0.9
7	CA	B	2001	1/1	0.80	0.07	69,69,69,69	0
7	CA	A	2004	1/1	0.81	0.11	88,88,88,88	0
8	NAG	C	2007	14/15	0.81	0.15	87,102,110,111	0
8	NAG	C	2008	14/15	0.83	0.18	97,101,105,105	0
9	MG	B	2003	1/1	0.83	0.25	62,62,62,62	0
8	NAG	A	2006	14/15	0.85	0.13	92,104,108,108	0
8	NAG	A	2015	14/15	0.87	0.20	82,93,103,112	0
8	NAG	C	2016	14/15	0.89	0.18	100,110,118,124	0
8	NAG	A	2007	14/15	0.89	0.17	92,99,101,104	0
8	NAG	A	2005	14/15	0.90	0.15	73,78,86,86	0
7	CA	A	2002	1/1	0.90	0.06	84,84,84,84	0
8	NAG	D	2004	14/15	0.91	0.10	68,71,73,73	0
8	NAG	A	2008	14/15	0.91	0.20	62,68,71,72	0
8	NAG	C	2009	14/15	0.93	0.17	64,70,74,75	0
7	CA	C	2004	1/1	0.95	0.12	81,81,81,81	0
7	CA	D	2001	1/1	0.95	0.07	65,65,65,65	0
7	CA	A	2001	1/1	0.95	0.12	69,69,69,69	0
8	NAG	B	2004	14/15	0.95	0.14	66,71,77,78	0
7	CA	A	2003	1/1	0.95	0.10	78,78,78,78	0
7	CA	B	2002	1/1	0.96	0.05	62,62,62,62	0
7	CA	C	2002	1/1	0.96	0.11	75,75,75,75	0
9	MG	D	2003	1/1	0.96	0.31	57,57,57,57	0
7	CA	C	2003	1/1	0.97	0.09	84,84,84,84	0
7	CA	C	2001	1/1	0.97	0.12	63,63,63,63	0
7	CA	D	2002	1/1	0.99	0.10	54,54,54,54	0

6.5 Other polymers

There are no such residues in this entry.