



Full wwPDB X-ray Structure Validation Report ⓘ

May 14, 2026 – 07:09 pm BST

PDB ID : 9T3M / pdb_00009t3m
Title : Crystal Structure of 11 bound to the PH domain of Btk
Authors : Brear, P.; West, R.M.; Nicolescu, R.C.B.; Blaszczyk, B.K.; Deingruber, T.;
Sanders, M.G.; Perez-Areales, F.J.; Spring, D.R.; Hyvonen, M.
Deposited on : 2025-10-28
Resolution : 1.80 Å(reported)

This is a Full wwPDB X-ray Structure Validation Report for a publicly released PDB entry.

We welcome your comments at validation@mail.wwpdb.org

A user guide is available at

<https://www.wwpdb.org/validation/2017/XrayValidationReportHelp>

with specific help available everywhere you see the ⓘ symbol.

The types of validation reports are described at

<http://www.wwpdb.org/validation/2017/FAQs#types>.

The following versions of software and data (see [references ⓘ](#)) were used in the production of this report:

MolProbity	:	4-5-2 with Phenix2.0
Mogul	:	1.8.4, CSD as541be (2020)
Xtriage (Phenix)	:	2.0
EDS	:	3.0
Buster-report	:	wwPDB partial adaption of 1.1.7 (2018)
Percentile statistics	:	20250101.v01 (using entries in the PDB archive January 1st 2025)
CCP4	:	9.0.010 (Gargrove)
Density-Fitness	:	1.0.12
Ideal geometry (proteins)	:	Engh & Huber (2001)
Ideal geometry (DNA, RNA)	:	Parkinson et al. (1996)
Validation Pipeline (wwPDB-VP)	:	2.49

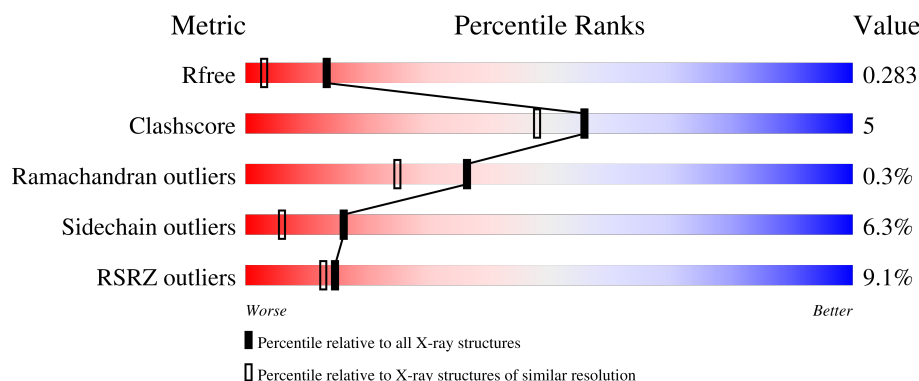
1 Overall quality at a glance

The following experimental techniques were used to determine the structure:

X-RAY DIFFRACTION

The reported resolution of this entry is 1.80 Å.

Percentile scores (ranging between 0-100) for global validation metrics of the entry are shown in the following graphic. The table shows the number of entries on which the scores are based.



Metric	Whole archive (#Entries)	Similar resolution (#Entries, resolution range(Å))
R_{free}	180053	7662 (1.80-1.80)
Clashscore	190562	8479 (1.80-1.80)
Ramachandran outliers	187476	8391 (1.80-1.80)
Sidechain outliers	187428	8390 (1.80-1.80)
RSRZ outliers	180081	7663 (1.80-1.80)

The table below summarises the geometric issues observed across the polymeric chains and their fit to the electron density. The red, orange, yellow and green segments of the lower bar indicate the fraction of residues that contain outliers for ≥ 3 , 2, 1 and 0 types of geometric quality criteria respectively. A grey segment represents the fraction of residues that are not modelled. The numeric value for each fraction is indicated below the corresponding segment, with a dot representing fractions $\leq 5\%$. The upper red bar (where present) indicates the fraction of residues that have poor fit to the electron density. The numeric value is given above the bar.

Mol	Chain	Length	Quality of chain
1	A	169	<div> <div>6%</div> <div>71% 16% .. 11%</div> </div>
1	B	169	<div> <div>7%</div> <div>72% 19% • 8%</div> </div>
1	C	169	<div> <div>7%</div> <div>76% 13% • 9%</div> </div>
1	D	169	<div> <div>14%</div> <div>75% 17% • 7%</div> </div>

2 Entry composition

There are 5 unique types of molecules in this entry. The entry contains 5480 atoms, of which 0 are hydrogens and 0 are deuteriums.

In the tables below, the ZeroOcc column contains the number of atoms modelled with zero occupancy, the AltConf column contains the number of residues with at least one atom in alternate conformation and the Trace column contains the number of residues modelled with at most 2 atoms.

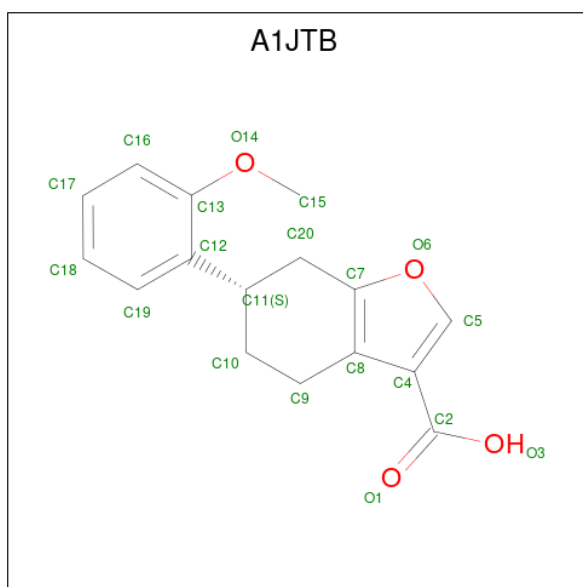
- Molecule 1 is a protein called Tyrosine-protein kinase BTK.

Mol	Chain	Residues	Atoms					ZeroOcc	AltConf	Trace
1	A	150	Total	C	N	O	S	0	0	0
			1250	811	213	221	5			
1	B	155	Total	C	N	O	S	0	1	0
			1302	839	223	234	6			
1	C	154	Total	C	N	O	S	0	0	0
			1276	824	217	229	6			
1	D	157	Total	C	N	O	S	0	0	0
			1296	838	222	231	5			

There are 4 discrepancies between the modelled and reference sequences:

Chain	Residue	Modelled	Actual	Comment	Reference
A	145	SER	CYS	engineered mutation	UNP Q06187
B	145	SER	CYS	engineered mutation	UNP Q06187
C	145	SER	CYS	engineered mutation	UNP Q06187
D	145	SER	CYS	engineered mutation	UNP Q06187

- Molecule 2 is (6 {S})-6-(2-methoxyphenyl)-4,5,6,7-tetrahydro-1-benzofuran-3-carboxylic acid (CCD ID: A1JTB) (formula: C₁₆H₁₆O₄) (labeled as "Ligand of Interest" by depositor).



Mol	Chain	Residues	Atoms			ZeroOcc	AltConf
2	A	1	Total	C	O	0	0
			20	16	4		
2	B	1	Total	C	O	0	0
			20	16	4		

- Molecule 3 is ZINC ION (CCD ID: ZN) (formula: Zn).

Mol	Chain	Residues	Atoms		ZeroOcc	AltConf
3	A	1	Total	Zn	0	0
			1	1		
3	B	1	Total	Zn	0	0
			1	1		
3	C	1	Total	Zn	0	0
			1	1		
3	D	1	Total	Zn	0	0
			1	1		

- Molecule 4 is MAGNESIUM ION (CCD ID: MG) (formula: Mg).

Mol	Chain	Residues	Atoms		ZeroOcc	AltConf
4	A	1	Total	Mg	0	0
			1	1		
4	C	1	Total	Mg	0	0
			1	1		
4	D	1	Total	Mg	0	0
			1	1		

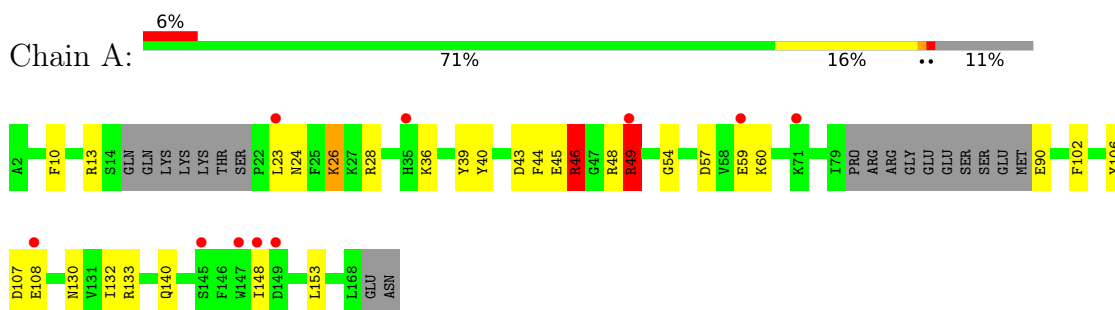
- Molecule 5 is water.

Mol	Chain	Residues	Atoms		ZeroOcc	AltConf
5	A	85	Total 85	O 85	0	0
5	B	81	Total 81	O 81	0	0
5	C	82	Total 82	O 82	0	0
5	D	61	Total 61	O 61	0	0

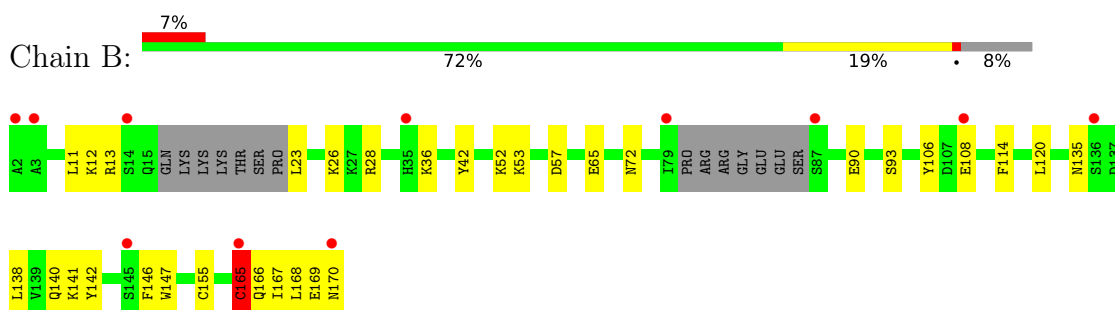
3 Residue-property plots [i](#)

These plots are drawn for all protein, RNA, DNA and oligosaccharide chains in the entry. The first graphic for a chain summarises the proportions of the various outlier classes displayed in the second graphic. The second graphic shows the sequence view annotated by issues in geometry and electron density. Residues are color-coded according to the number of geometric quality criteria for which they contain at least one outlier: green = 0, yellow = 1, orange = 2 and red = 3 or more. A red dot above a residue indicates a poor fit to the electron density ($RSRZ > 2$). Stretches of 2 or more consecutive residues without any outlier are shown as a green connector. Residues present in the sample, but not in the model, are shown in grey.

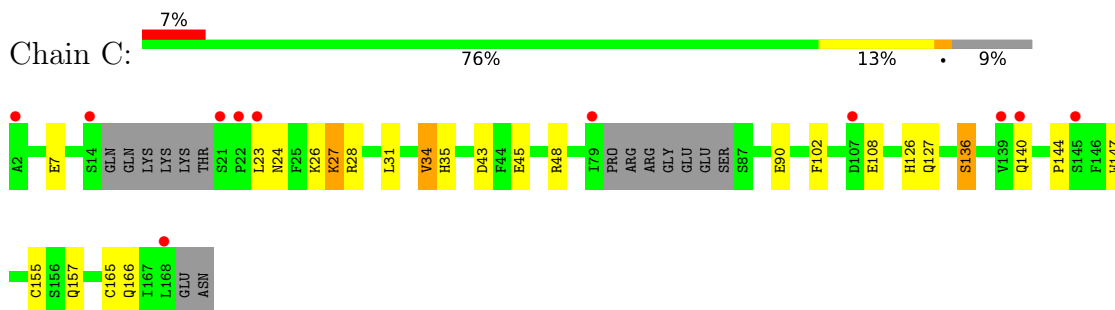
- Molecule 1: Tyrosine-protein kinase BTK



- Molecule 1: Tyrosine-protein kinase BTK

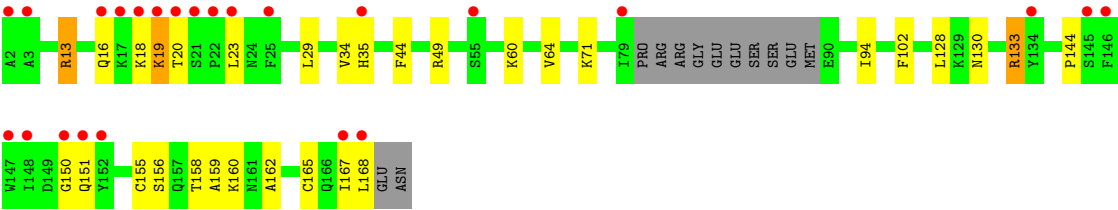


- Molecule 1: Tyrosine-protein kinase BTK



- Molecule 1: Tyrosine-protein kinase BTK





4 Data and refinement statistics

Property	Value	Source
Space group	P 1 21 1	Depositor
Cell constants a, b, c, α , β , γ	68.59Å 67.07Å 79.93Å 90.00° 99.77° 90.00°	Depositor
Resolution (Å)	67.60 – 1.80 67.60 – 1.80	Depositor EDS
% Data completeness (in resolution range)	97.9 (67.60-1.80) 97.9 (67.60-1.80)	Depositor EDS
R_{merge}	0.13	Depositor
R_{sym}	(Not available)	Depositor
$\langle I/\sigma(I) \rangle$ ¹	0.99 (at 1.80Å)	Xtriage
Refinement program	BUSTER 2.10.4 (10-JUL-2024)	Depositor
R, R_{free}	0.245 , 0.298 0.241 , 0.283	Depositor DCC
R_{free} test set	3356 reflections (5.05%)	wwPDB-VP
Wilson B-factor (Å ²)	35.3	Xtriage
Anisotropy	0.440	Xtriage
Bulk solvent k_{sol} (e/Å ³), B_{sol} (Å ²)	0.32 , 38.8	EDS
L-test for twinning ²	$\langle L \rangle = 0.51$, $\langle L^2 \rangle = 0.34$	Xtriage
Estimated twinning fraction	No twinning to report.	Xtriage
F_o, F_c correlation	0.96	EDS
Total number of atoms	5480	wwPDB-VP
Average B, all atoms (Å ²)	46.0	wwPDB-VP

Xtriage's analysis on translational NCS is as follows: *The largest off-origin peak in the Patterson function is 7.88% of the height of the origin peak. No significant pseudotranslation is detected.*

¹Intensities estimated from amplitudes.

²Theoretical values of $\langle |L| \rangle$, $\langle L^2 \rangle$ for acentric reflections are 0.5, 0.333 respectively for untwinned datasets, and 0.375, 0.2 for perfectly twinned datasets.

5 Model quality

5.1 Standard geometry

Bond lengths and bond angles in the following residue types are not validated in this section: A1JTB, ZN, MG

The Z score for a bond length (or angle) is the number of standard deviations the observed value is removed from the expected value. A bond length (or angle) with $|Z| > 5$ is considered an outlier worth inspection. RMSZ is the root-mean-square of all Z scores of the bond lengths (or angles).

Mol	Chain	Bond lengths		Bond angles	
		RMSZ	# Z >5	RMSZ	# Z >5
1	A	0.81	0/1281	1.13	7/1728 (0.4%)
1	B	0.81	0/1333	1.13	4/1797 (0.2%)
1	C	0.80	0/1307	1.04	2/1763 (0.1%)
1	D	0.79	0/1328	1.08	2/1794 (0.1%)
All	All	0.80	0/5249	1.09	15/7082 (0.2%)

Chiral center outliers are detected by calculating the chiral volume of a chiral center and verifying if the center is modelled as a planar moiety or with the opposite hand. A planarity outlier is detected by checking planarity of atoms in a peptide group, atoms in a mainchain group or atoms of a sidechain that are expected to be planar.

Mol	Chain	#Chirality outliers	#Planarity outliers
1	A	0	2
1	D	0	2
All	All	0	4

There are no bond length outliers.

All (15) bond angle outliers are listed below:

Mol	Chain	Res	Type	Atoms	Z	Observed(°)	Ideal(°)
1	B	165	CYS	CB-CA-C	-18.23	79.86	110.85
1	A	90	GLU	CB-CG-CD	-6.60	101.38	112.60
1	D	20	THR	N-CA-C	-6.52	104.47	112.88
1	A	102	PHE	CA-CB-CG	5.90	119.70	113.80
1	C	102	PHE	CA-CB-CG	5.74	119.53	113.80
1	A	10	PHE	CA-CB-CG	5.73	119.53	113.80
1	B	146	PHE	CA-CB-CG	5.38	119.18	113.80
1	B	36	LYS	N-CA-C	5.26	117.39	109.23
1	D	102	PHE	CA-CB-CG	5.19	118.99	113.80
1	A	132	ILE	CA-C-N	5.15	128.54	120.82

Continued on next page...

Continued from previous page...

Mol	Chain	Res	Type	Atoms	Z	Observed(°)	Ideal(°)
1	A	132	ILE	C-N-CA	5.15	128.54	120.82
1	A	43	ASP	CA-CB-CG	5.05	117.65	112.60
1	B	147	TRP	N-CA-C	-5.05	101.53	109.25
1	C	147	TRP	N-CA-C	-5.03	101.11	109.46
1	A	36	LYS	N-CA-C	5.03	117.44	109.50

There are no chirality outliers.

All (4) planarity outliers are listed below:

Mol	Chain	Res	Type	Group
1	A	46	ARG	Sidechain
1	A	49	ARG	Sidechain
1	D	13	ARG	Sidechain
1	D	133	ARG	Sidechain

5.2 Too-close contacts

In the following table, the Non-H and H(model) columns list the number of non-hydrogen atoms and hydrogen atoms in the chain respectively. The H(added) column lists the number of hydrogen atoms added and optimized by MolProbity. The Clashes column lists the number of clashes within the asymmetric unit, whereas Symm-Clashes lists symmetry-related clashes.

Mol	Chain	Non-H	H(model)	H(added)	Clashes	Symm-Clashes
1	A	1250	0	1254	12	0
1	B	1302	0	1292	14	0
1	C	1276	0	1272	11	0
1	D	1296	0	1296	14	0
2	A	20	0	0	0	0
2	B	20	0	0	0	0
3	A	1	0	0	0	0
3	B	1	0	0	0	0
3	C	1	0	0	0	0
3	D	1	0	0	0	0
4	A	1	0	0	0	0
4	C	1	0	0	0	0
4	D	1	0	0	0	0
5	A	85	0	0	0	0
5	B	81	0	0	2	0
5	C	82	0	0	1	0
5	D	61	0	0	0	0
All	All	5480	0	5114	48	0

The all-atom clashscore is defined as the number of clashes found per 1000 atoms (including hydrogen atoms). The all-atom clashscore for this structure is 5.

All (48) close contacts within the same asymmetric unit are listed below, sorted by their clash magnitude.

Atom-1	Atom-2	Interatomic distance (Å)	Clash overlap (Å)
1:B:155:CYS:HB3	1:B:165:CYS:SG	2.25	0.77
1:A:46:ARG:HB3	1:A:48:ARG:HG3	1.70	0.71
1:D:151:GLN:HE21	1:D:158:THR:HG22	1.61	0.66
1:D:151:GLN:HG2	1:D:158:THR:HG22	1.78	0.65
1:B:169:GLU:HG3	1:C:136:SER:HB3	1.80	0.63
1:A:40:TYR:CE2	1:A:49:ARG:HD2	2.34	0.62
1:C:34:VAL:HG22	1:C:35:HIS:CD2	2.35	0.60
1:C:27:LYS:HE3	1:D:44:PHE:O	2.02	0.59
1:B:90:GLU:HB3	1:B:93:SER:OG	2.04	0.57
1:A:106:TYR:CZ	1:A:108:GLU:HB2	2.40	0.56
1:A:130:ASN:O	1:A:133:ARG:HB2	2.06	0.54
1:A:106:TYR:CE2	1:A:108:GLU:HB2	2.43	0.53
1:C:155:CYS:SG	1:C:157:GLN:HG3	2.49	0.53
1:A:39:TYR:CZ	1:A:54:GLY:HA3	2.44	0.52
1:C:24:ASN:HB2	5:C:323:HOH:O	2.09	0.52
1:A:26:LYS:HE2	1:A:28:ARG:HH22	1.76	0.50
1:B:169:GLU:O	1:B:170:ASN:HB2	2.11	0.49
1:C:26:LYS:HD3	1:C:28:ARG:NH2	2.27	0.49
1:B:141:LYS:HG3	1:B:167:ILE:HD12	1.95	0.48
1:B:135:ASN:HB2	1:B:138:LEU:HD21	1.94	0.48
1:D:64:VAL:HG21	1:D:128:LEU:HB3	1.96	0.48
1:D:151:GLN:HE21	1:D:158:THR:CG2	2.26	0.47
1:D:130:ASN:O	1:D:133:ARG:HG3	2.14	0.47
1:D:60:LYS:HB3	1:D:60:LYS:HE3	1.65	0.47
1:D:155:CYS:O	1:D:156:SER:HB2	2.14	0.47
1:C:34:VAL:CG2	1:C:35:HIS:CD2	2.98	0.46
1:B:52:LYS:NZ	5:B:304:HOH:O	2.49	0.46
1:B:165:CYS:SG	5:B:340:HOH:O	2.61	0.46
1:A:13:ARG:HD2	1:A:23:LEU:HD13	1.99	0.45
1:C:144:PRO:HD2	1:C:165:CYS:SG	2.57	0.45
1:B:65:GLU:HG3	1:B:168:LEU:CD2	2.47	0.45
1:A:24:ASN:HD21	1:A:26:LYS:HD2	1.81	0.45
1:D:18:LYS:O	1:D:19:LYS:HG3	2.17	0.45
1:B:106:TYR:CE2	1:B:108:GLU:HB2	2.52	0.45
1:B:11:LEU:HB3	1:B:114:PHE:HB2	2.00	0.44
1:D:167:ILE:O	1:D:168:LEU:HB2	2.17	0.44
1:C:126:HIS:HD2	1:C:127:GLN:HE21	1.65	0.44

Continued on next page...

Continued from previous page...

Atom-1	Atom-2	Interatomic distance (Å)	Clash overlap (Å)
1:D:159:ALA:HB3	1:D:162:ALA:HB2	2.00	0.43
1:B:65:GLU:HG3	1:B:168:LEU:HD21	1.99	0.43
1:A:59:GLU:HG3	1:A:60:LYS:N	2.34	0.43
1:C:7:GLU:HG3	1:C:31:LEU:HD23	2.01	0.43
1:B:28:ARG:NE	1:B:53:LYS:HG3	2.34	0.42
1:A:39:TYR:CE2	1:A:54:GLY:HA3	2.55	0.42
1:A:44:PHE:CE2	1:B:42:TYR:HB3	2.54	0.42
1:D:34:VAL:HG23	1:D:35:HIS:ND1	2.34	0.41
1:C:43:ASP:HB3	1:C:48:ARG:O	2.20	0.41
1:D:144:PRO:HD2	1:D:165:CYS:SG	2.61	0.41
1:D:150:GLY:C	1:D:151:GLN:HG3	2.46	0.40

There are no symmetry-related clashes.

5.3 Torsion angles [i](#)

5.3.1 Protein backbone [i](#)

In the following table, the Percentiles column shows the percent Ramachandran outliers of the chain as a percentile score with respect to all X-ray entries followed by that with respect to entries of similar resolution.

The Analysed column shows the number of residues for which the backbone conformation was analysed, and the total number of residues.

Mol	Chain	Analysed	Favoured	Allowed	Outliers	Percentiles	
1	A	144/169 (85%)	142 (99%)	2 (1%)	0	100	100
1	B	150/169 (89%)	147 (98%)	3 (2%)	0	100	100
1	C	148/169 (88%)	144 (97%)	4 (3%)	0	100	100
1	D	153/169 (90%)	145 (95%)	6 (4%)	2 (1%)	9	3
All	All	595/676 (88%)	578 (97%)	15 (2%)	2 (0%)	36	25

All (2) Ramachandran outliers are listed below:

Mol	Chain	Res	Type
1	D	16	GLN
1	D	19	LYS

5.3.2 Protein sidechains ⓘ

In the following table, the Percentiles column shows the percent sidechain outliers of the chain as a percentile score with respect to all X-ray entries followed by that with respect to entries of similar resolution.

The Analysed column shows the number of residues for which the sidechain conformation was analysed, and the total number of residues.

Mol	Chain	Analysed	Rotameric	Outliers	Percentiles	
1	A	140/158 (89%)	131 (94%)	9 (6%)	16	6
1	B	146/158 (92%)	135 (92%)	11 (8%)	12	4
1	C	143/158 (90%)	134 (94%)	9 (6%)	16	6
1	D	144/158 (91%)	137 (95%)	7 (5%)	22	10
All	All	573/632 (91%)	537 (94%)	36 (6%)	16	6

All (36) residues with a non-rotameric sidechain are listed below:

Mol	Chain	Res	Type
1	A	26	LYS
1	A	45	GLU
1	A	46	ARG
1	A	49	ARG
1	A	57	ASP
1	A	107	ASP
1	A	140	GLN
1	A	148	ILE
1	A	153	LEU
1	B	12	LYS
1	B	13	ARG
1	B	23	LEU
1	B	26	LYS
1	B	57	ASP
1	B	72	ASN
1	B	120	LEU
1	B	140	GLN
1	B	142	TYR
1	B	165	CYS
1	B	166	GLN
1	C	23	LEU
1	C	27	LYS
1	C	34	VAL
1	C	45	GLU

Continued on next page...

Continued from previous page...

Mol	Chain	Res	Type
1	C	90	GLU
1	C	108	GLU
1	C	136	SER
1	C	140	GLN
1	C	166	GLN
1	D	13	ARG
1	D	23	LEU
1	D	29	LEU
1	D	49	ARG
1	D	71	LYS
1	D	94	ILE
1	D	160	LYS

Sometimes sidechains can be flipped to improve hydrogen bonding and reduce clashes. All (7) such sidechains are listed below:

Mol	Chain	Res	Type
1	A	24	ASN
1	A	151	GLN
1	B	72	ASN
1	C	126	HIS
1	C	127	GLN
1	C	151	GLN
1	D	151	GLN

5.3.3 RNA [i](#)

There are no RNA molecules in this entry.

5.4 Non-standard residues in protein, DNA, RNA chains [i](#)

There are no non-standard protein/DNA/RNA residues in this entry.

5.5 Carbohydrates [i](#)

There are no oligosaccharides in this entry.

5.6 Ligand geometry [i](#)

Of 9 ligands modelled in this entry, 7 are monoatomic - leaving 2 for Mogul analysis.

In the following table, the Counts columns list the number of bonds (or angles) for which Mogul statistics could be retrieved, the number of bonds (or angles) that are observed in the model and the number of bonds (or angles) that are defined in the Chemical Component Dictionary. The Link column lists molecule types, if any, to which the group is linked. The Z score for a bond length (or angle) is the number of standard deviations the observed value is removed from the expected value. A bond length (or angle) with $|Z| > 2$ is considered an outlier worth inspection. RMSZ is the root-mean-square of all Z scores of the bond lengths (or angles).

Mol	Type	Chain	Res	Link	Bond lengths			Bond angles		
					Counts	RMSZ	# Z > 2	Counts	RMSZ	# Z > 2
2	A1JTB	A	201	-	22,22,22	0.67	0	24,31,31	0.88	2 (8%)
2	A1JTB	B	201	-	22,22,22	0.69	0	24,31,31	0.90	3 (12%)

In the following table, the Chirals column lists the number of chiral outliers, the number of chiral centers analysed, the number of these observed in the model and the number defined in the Chemical Component Dictionary. Similar counts are reported in the Torsion and Rings columns. '-' means no outliers of that kind were identified.

Mol	Type	Chain	Res	Link	Chirals	Torsions	Rings
2	A1JTB	A	201	-	-	4/10/19/19	0/3/3/3
2	A1JTB	B	201	-	-	0/10/19/19	0/3/3/3

There are no bond length outliers.

All (5) bond angle outliers are listed below:

Mol	Chain	Res	Type	Atoms	Z	Observed(°)	Ideal(°)
2	B	201	A1JTB	C10-C9-C8	-2.53	105.54	111.56
2	A	201	A1JTB	C10-C9-C8	-2.52	105.57	111.56
2	A	201	A1JTB	O1-C2-C4	-2.24	117.54	122.46
2	B	201	A1JTB	O1-C2-C4	-2.21	117.61	122.46
2	B	201	A1JTB	C9-C8-C4	2.06	131.30	127.44

There are no chirality outliers.

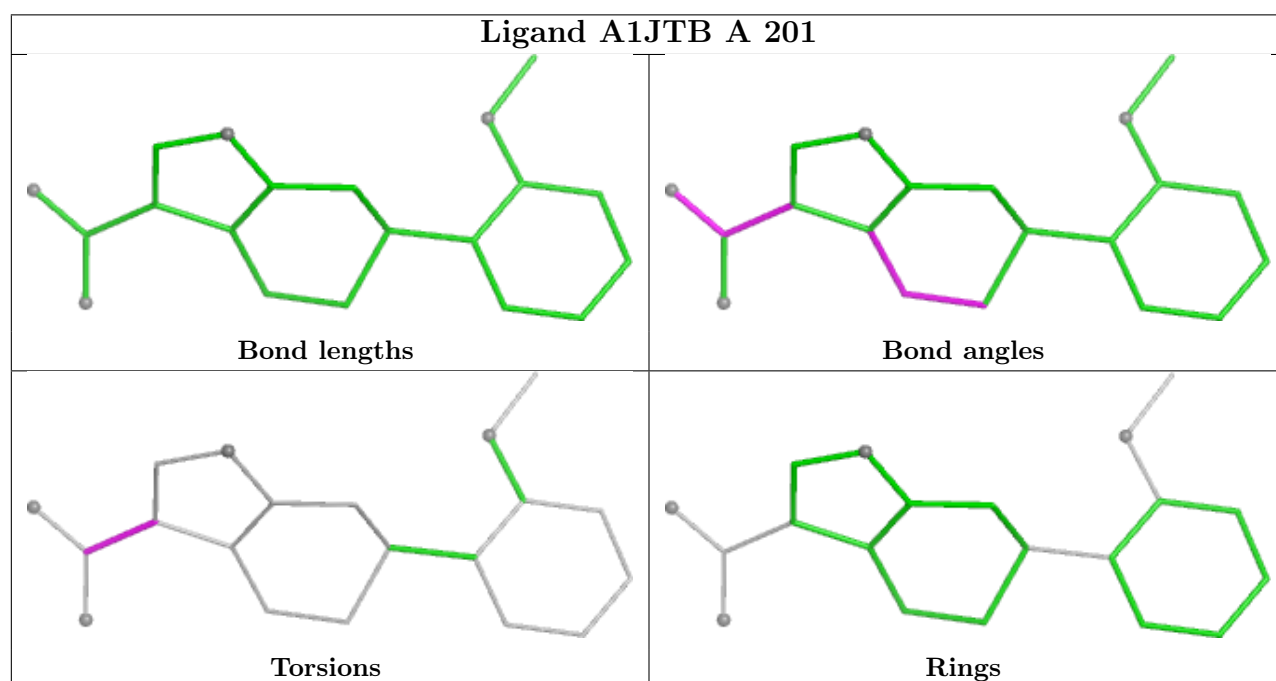
All (4) torsion outliers are listed below:

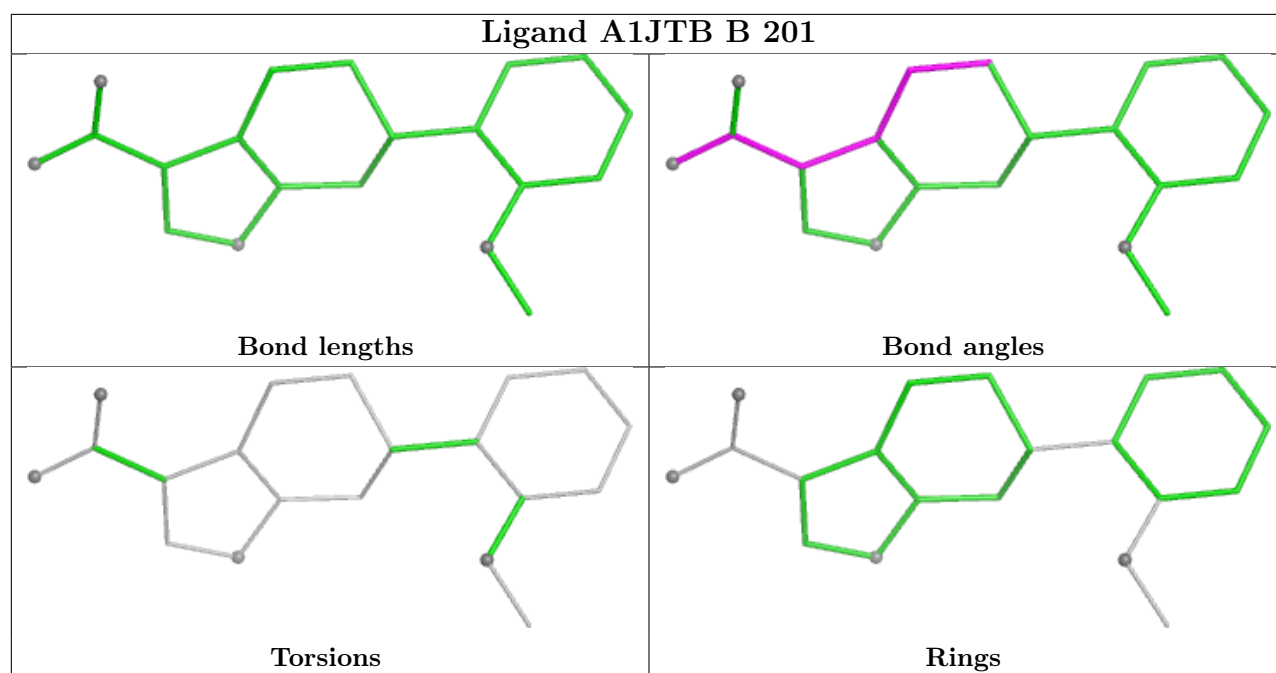
Mol	Chain	Res	Type	Atoms
2	A	201	A1JTB	O3-C2-C4-C5
2	A	201	A1JTB	O1-C2-C4-C8
2	A	201	A1JTB	O3-C2-C4-C8
2	A	201	A1JTB	O1-C2-C4-C5

There are no ring outliers.

No monomer is involved in short contacts.

The following is a two-dimensional graphical depiction of Mogul quality analysis of bond lengths, bond angles, torsion angles, and ring geometry for all instances of the Ligand of Interest. In addition, ligands with molecular weight > 250 and outliers as shown on the validation Tables will also be included. For torsion angles, if less than 5% of the Mogul distribution of torsion angles is within 10 degrees of the torsion angle in question, then that torsion angle is considered an outlier. Any bond that is central to one or more torsion angles identified as an outlier by Mogul will be highlighted in the graph. For rings, the root-mean-square deviation (RMSD) between the ring in question and similar rings identified by Mogul is calculated over all ring torsion angles. If the average RMSD is greater than 60 degrees and the minimal RMSD between the ring in question and any Mogul-identified rings is also greater than 60 degrees, then that ring is considered an outlier. The outliers are highlighted in purple. The color gray indicates Mogul did not find sufficient equivalents in the CSD to analyse the geometry.





5.7 Other polymers [i](#)

There are no such residues in this entry.

5.8 Polymer linkage issues [i](#)

There are no chain breaks in this entry.

6 Fit of model and data

6.1 Protein, DNA and RNA chains

In the following table, the column labelled ‘#RSRZ > 2’ contains the number (and percentage) of RSRZ outliers, followed by percent RSRZ outliers for the chain as percentile scores relative to all X-ray entries and entries of similar resolution. The OWAB column contains the minimum, median, 95th percentile and maximum values of the occupancy-weighted average B-factor per residue. The column labelled ‘Q < 0.9’ lists the number of (and percentage) of residues with an average occupancy less than 0.9.

Mol	Chain	Analysed	<RSRZ>	#RSRZ>2		OWAB(Å ²)	Q<0.9
1	A	150/169 (88%)	0.65	10 (6%)	24 22	29, 43, 59, 67	0
1	B	155/169 (91%)	0.57	11 (7%)	22 20	23, 41, 61, 80	1 (0%)
1	C	154/169 (91%)	0.76	11 (7%)	22 20	33, 46, 61, 77	0
1	D	157/169 (92%)	1.11	24 (15%)	5 4	34, 53, 75, 91	0
All	All	616/676 (91%)	0.78	56 (9%)	15 13	23, 46, 66, 91	1 (0%)

All (56) RSRZ outliers are listed below:

Mol	Chain	Res	Type	RSRZ
1	C	168	LEU	5.5
1	D	2	ALA	5.2
1	A	148	ILE	4.9
1	A	149	ASP	4.2
1	D	168	LEU	4.1
1	D	23	LEU	4.0
1	D	20	THR	3.9
1	C	22	PRO	3.8
1	D	167	ILE	3.7
1	C	107	ASP	3.7
1	D	19	LYS	3.5
1	D	79	ILE	3.4
1	C	23	LEU	3.4
1	D	152	TYR	3.3
1	C	2	ALA	3.3
1	D	148	ILE	3.2
1	A	71	LYS	3.2
1	A	23	LEU	3.2
1	D	22	PRO	3.0
1	A	108	GLU	3.0
1	A	35	HIS	2.9

Continued on next page...

Continued from previous page...

Mol	Chain	Res	Type	RSRZ
1	A	147	TRP	2.9
1	C	145	SER	2.9
1	D	18	LYS	2.8
1	B	2	ALA	2.8
1	D	16	GLN	2.8
1	D	145	SER	2.8
1	C	140	GLN	2.8
1	D	17	LYS	2.8
1	D	146	PHE	2.7
1	C	79	ILE	2.7
1	B	136	SER	2.7
1	A	145	SER	2.7
1	B	108	GLU	2.7
1	A	59	GLU	2.6
1	D	147	TRP	2.6
1	C	14	SER	2.6
1	C	21	SER	2.6
1	D	55	SER	2.6
1	D	25	PHE	2.5
1	B	35[A]	HIS	2.5
1	D	35	HIS	2.5
1	B	3	ALA	2.5
1	C	139	VAL	2.5
1	B	165	CYS	2.4
1	D	134	TYR	2.4
1	D	21	SER	2.3
1	B	79	ILE	2.3
1	A	49	ARG	2.3
1	D	3	ALA	2.2
1	B	14	SER	2.2
1	B	145	SER	2.2
1	D	150	GLY	2.2
1	B	170	ASN	2.1
1	D	151	GLN	2.1
1	B	87	SER	2.1

6.2 Non-standard residues in protein, DNA, RNA chains ⓘ

There are no non-standard protein/DNA/RNA residues in this entry.

6.3 Carbohydrates ⓘ

There are no oligosaccharides in this entry.

6.4 Ligands ⓘ

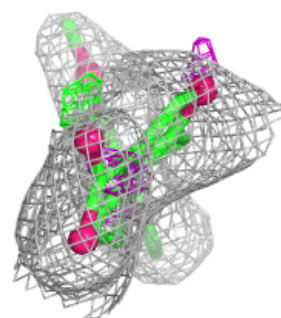
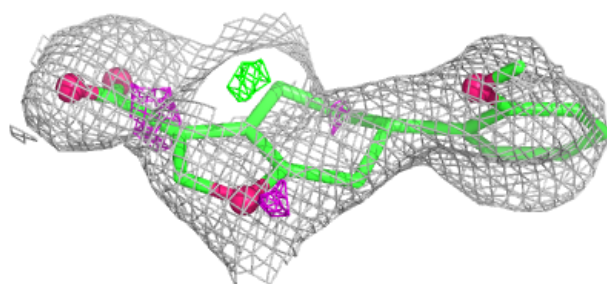
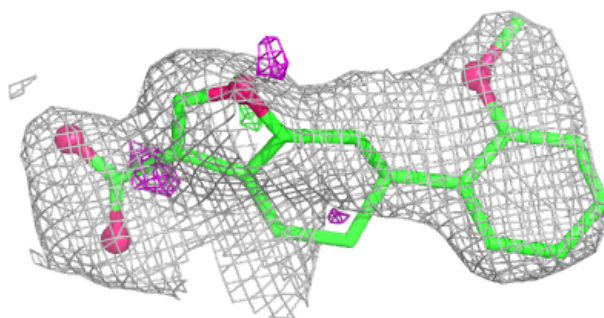
In the following table, the Atoms column lists the number of modelled atoms in the group and the number defined in the chemical component dictionary. The B-factors column lists the minimum, median, 95th percentile and maximum values of B factors of atoms in the group. The column labelled 'Q< 0.9' lists the number of atoms with occupancy less than 0.9.

Mol	Type	Chain	Res	Atoms	RSCC	RSR	B-factors(Å ²)	Q<0.9
2	A1JTB	A	201	20/20	0.76	0.16	64,68,70,70	0
4	MG	D	202	1/1	0.84	0.19	50,50,50,50	0
4	MG	C	202	1/1	0.85	0.24	54,54,54,54	0
2	A1JTB	B	201	20/20	0.87	0.12	47,53,56,56	0
3	ZN	D	201	1/1	0.98	0.04	49,49,49,49	0
3	ZN	A	202	1/1	0.99	0.04	40,40,40,40	0
4	MG	A	203	1/1	0.99	0.03	44,44,44,44	0
3	ZN	B	202	1/1	0.99	0.04	41,41,41,41	0
3	ZN	C	201	1/1	0.99	0.04	42,42,42,42	0

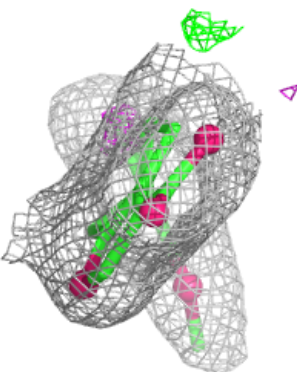
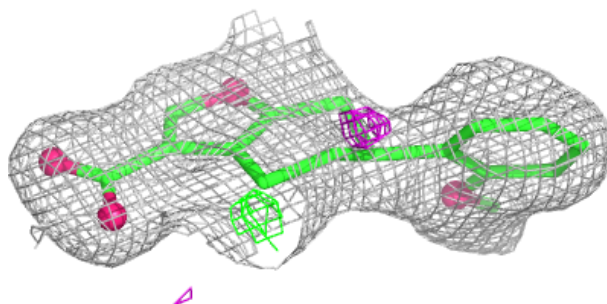
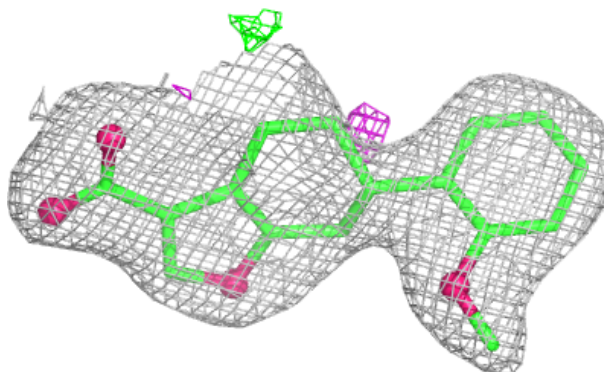
The following is a graphical depiction of the model fit to experimental electron density of all instances of the Ligand of Interest. In addition, ligands with molecular weight > 250 and outliers as shown on the geometry validation Tables will also be included. Each fit is shown from different orientation to approximate a three-dimensional view.

Electron density around A1JTB A 201:

$2mF_o-DF_c$ (at 0.7 rmsd) in gray
 mF_o-DF_c (at 3 rmsd) in purple (negative)
and green (positive)

**Electron density around A1JTB B 201:**

$2mF_o-DF_c$ (at 0.7 rmsd) in gray
 mF_o-DF_c (at 3 rmsd) in purple (negative)
and green (positive)



6.5 Other polymers [i](#)

There are no such residues in this entry.