



Full wwPDB X-ray Structure Validation Report ⓘ

Mar 9, 2026 – 01:08 PM UTC

PDB ID : 9SM1 / pdb_00009sm1
Title : FPP-Methyltransferase from Pseudomonas chlororaphis in complex with SAH and FPP
Authors : Groll, M.; Yang, K.; Xu, H.; Troycke, P.; Dickschat, J.S.
Deposited on : 2025-09-05
Resolution : 2.20 Å(reported)

This is a Full wwPDB X-ray Structure Validation Report for a publicly released PDB entry.

We welcome your comments at validation@mail.wwpdb.org

A user guide is available at

<https://www.wwpdb.org/validation/2017/XrayValidationReportHelp>

with specific help available everywhere you see the ⓘ symbol.

The types of validation reports are described at

<http://www.wwpdb.org/validation/2017/FAQs#types>.

The following versions of software and data (see [references ⓘ](#)) were used in the production of this report:

MolProbity : 4-5-2 with Phenix2.0
Mogul : 2022.3.0, CSD as543be (2022)
Xtriage (Phenix) : 2.0
EDS : 3.0
Buster-report : wwPDB partial adaption of 1.1.7 (2018)
Percentile statistics : 20250101.v01 (using entries in the PDB archive January 1st 2025)
CCP4 : 9.0.010 (Gargrove)
Density-Fitness : 1.0.12
Ideal geometry (proteins) : Engh & Huber (2001)
Ideal geometry (DNA, RNA) : Parkinson et al. (1996)
Validation Pipeline (wwPDB-VP) : 2.49

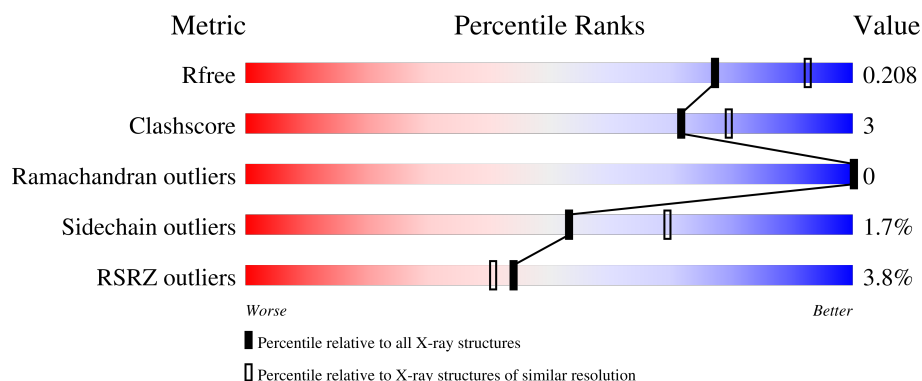
1 Overall quality at a glance

The following experimental techniques were used to determine the structure:

X-RAY DIFFRACTION

The reported resolution of this entry is 2.20 Å.

Percentile scores (ranging between 0-100) for global validation metrics of the entry are shown in the following graphic. The table shows the number of entries on which the scores are based.




Metric	Whole archive (#Entries)	Similar resolution (#Entries, resolution range(Å))
R_{free}	180053	6164 (2.20-2.20)
Clashscore	190562	6851 (2.20-2.20)
Ramachandran outliers	187476	6768 (2.20-2.20)
Sidechain outliers	187428	6769 (2.20-2.20)
RSRZ outliers	180081	6166 (2.20-2.20)

The table below summarises the geometric issues observed across the polymeric chains and their fit to the electron density. The red, orange, yellow and green segments of the lower bar indicate the fraction of residues that contain outliers for ≥ 3 , 2, 1 and 0 types of geometric quality criteria respectively. A grey segment represents the fraction of residues that are not modelled. The numeric value for each fraction is indicated below the corresponding segment, with a dot representing fractions $\leq 5\%$. The upper red bar (where present) indicates the fraction of residues that have poor fit to the electron density. The numeric value is given above the bar.

Mol	Chain	Length	Quality of chain
1	A	298	<div> <div>2%</div> <div> <div></div> <div>91%</div> <div>8%</div> </div> </div>
1	B	298	<div> <div>4%</div> <div> <div></div> <div>93%</div> <div>6%</div> </div> </div>
1	C	298	<div> <div>3%</div> <div> <div></div> <div>91%</div> <div>9%</div> </div> </div>
1	D	298	<div> <div>4%</div> <div> <div></div> <div>87%</div> <div>12%</div> </div> </div>
1	E	298	<div> <div>4%</div> <div> <div></div> <div>89%</div> <div>7%</div> </div> </div>

Continued on next page...

Continued from previous page...

Mol	Chain	Length	Quality of chain
1	F	298	 A horizontal bar chart showing the quality of chain 1. The bar is divided into four segments: a small red segment at the beginning labeled '4%', a large green segment labeled '87%', a small yellow segment labeled '5%', and a small grey segment at the end labeled '8%'.

The following table lists non-polymeric compounds, carbohydrate monomers and non-standard residues in protein, DNA, RNA chains that are outliers for geometric or electron-density-fit criteria:

Mol	Type	Chain	Res	Chirality	Geometry	Clashes	Electron density
3	FPP	A	402	-	-	X	-

2 Entry composition

There are 6 unique types of molecules in this entry. The entry contains 15000 atoms, of which 0 are hydrogens and 0 are deuteriums.

In the tables below, the ZeroOcc column contains the number of atoms modelled with zero occupancy, the AltConf column contains the number of residues with at least one atom in alternate conformation and the Trace column contains the number of residues modelled with at most 2 atoms.

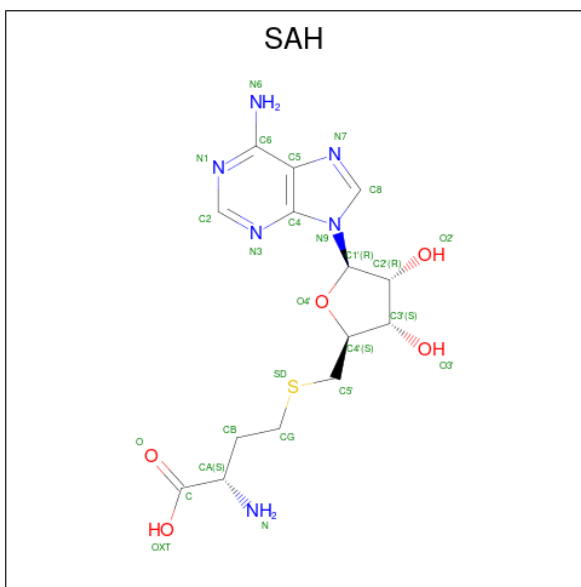
- Molecule 1 is a protein called Methyltransferase domain protein.

Mol	Chain	Residues	Atoms					ZeroOcc	AltConf	Trace
1	A	296	Total	C	N	O	S	0	0	0
			2393	1516	420	445	12			
1	B	297	Total	C	N	O	S	0	0	0
			2403	1521	424	446	12			
1	C	298	Total	C	N	O	S	0	0	0
			2408	1524	425	447	12			
1	D	297	Total	C	N	O	S	0	0	0
			2403	1521	424	446	12			
1	E	288	Total	C	N	O	S	0	0	0
			2329	1481	409	427	12			
1	F	274	Total	C	N	O	S	0	0	0
			2228	1417	394	405	12			

There are 6 discrepancies between the modelled and reference sequences:

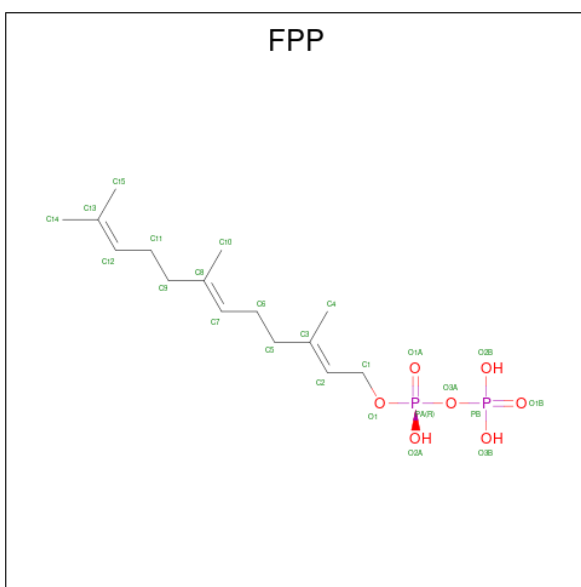
Chain	Residue	Modelled	Actual	Comment	Reference
A	24	SER	-	expression tag	UNP A0AB33WVX4
B	24	SER	-	expression tag	UNP A0AB33WVX4
C	24	SER	-	expression tag	UNP A0AB33WVX4
D	24	SER	-	expression tag	UNP A0AB33WVX4
E	24	SER	-	expression tag	UNP A0AB33WVX4
F	24	SER	-	expression tag	UNP A0AB33WVX4

- Molecule 2 is S-ADENOSYL-L-HOMOCYSTEINE (CCD ID: SAH) (formula: C₁₄H₂₀N₆O₅S) (labeled as "Ligand of Interest" by depositor).



Mol	Chain	Residues	Atoms					ZeroOcc	AltConf
2	A	1	Total	C	N	O	S	0	0
			26	14	6	5	1		
2	B	1	Total	C	N	O	S	0	0
			26	14	6	5	1		
2	C	1	Total	C	N	O	S	0	0
			26	14	6	5	1		
2	D	1	Total	C	N	O	S	0	0
			26	14	6	5	1		
2	E	1	Total	C	N	O	S	0	0
			26	14	6	5	1		
2	F	1	Total	C	N	O	S	0	0
			26	14	6	5	1		

- Molecule 3 is FARNESYL DIPHOSPHATE (CCD ID: FPP) (formula: $C_{15}H_{28}O_7P_2$) (labeled as "Ligand of Interest" by depositor).

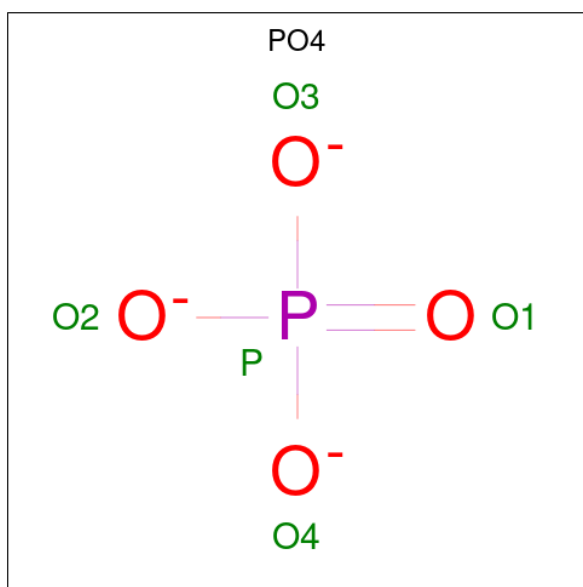


Mol	Chain	Residues	Atoms				ZeroOcc	AltConf
3	A	1	Total	C	O	P	0	0
			24	15	7	2		
3	B	1	Total	C	O	P	0	0
			24	15	7	2		
3	C	1	Total	C	O	P	0	0
			24	15	7	2		
3	D	1	Total	C	O	P	0	0
			24	15	7	2		

- Molecule 4 is MAGNESIUM ION (CCD ID: MG) (formula: Mg) (labeled as "Ligand of Interest" by depositor).

Mol	Chain	Residues	Atoms		ZeroOcc	AltConf
4	A	1	Total	Mg	0	0
			1	1		

- Molecule 5 is PHOSPHATE ION (CCD ID: PO4) (formula: O₄P).



Mol	Chain	Residues	Atoms			ZeroOcc	AltConf
5	A	1	Total	O	P	0	0
			5	4	1		
5	A	1	Total	O	P	0	0
			5	4	1		
5	A	1	Total	O	P	0	0
			5	4	1		
5	A	1	Total	O	P	0	0
			5	4	1		
5	A	1	Total	O	P	0	0
			5	4	1		
5	B	1	Total	O	P	0	0
			5	4	1		
5	B	1	Total	O	P	0	0
			5	4	1		
5	B	1	Total	O	P	0	0
			5	4	1		
5	B	1	Total	O	P	0	0
			5	4	1		
5	C	1	Total	O	P	0	0
			5	4	1		
5	C	1	Total	O	P	0	0
			5	4	1		
5	C	1	Total	O	P	0	0
			5	4	1		
5	C	1	Total	O	P	0	0
			5	4	1		

Continued on next page...

Continued from previous page...

Mol	Chain	Residues	Atoms			ZeroOcc	AltConf
5	C	1	Total	O	P	0	0
			5	4	1		
5	C	1	Total	O	P	0	0
			5	4	1		
5	D	1	Total	O	P	0	0
			5	4	1		
5	D	1	Total	O	P	0	0
			5	4	1		
5	D	1	Total	O	P	0	0
			5	4	1		
5	E	1	Total	O	P	0	0
			5	4	1		
5	F	1	Total	O	P	0	0
			5	4	1		
5	F	1	Total	O	P	0	0
			5	4	1		

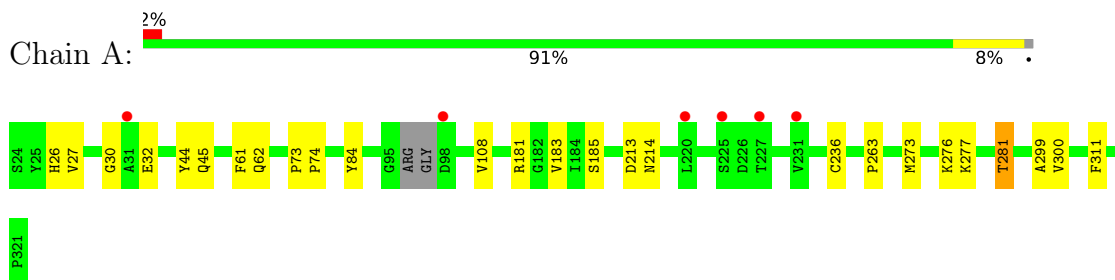
- Molecule 6 is water.

Mol	Chain	Residues	Atoms		ZeroOcc	AltConf
6	A	108	Total	O	0	0
			108	108		
6	B	72	Total	O	0	0
			72	72		
6	C	77	Total	O	0	0
			77	77		
6	D	95	Total	O	0	0
			95	95		
6	E	82	Total	O	0	0
			82	82		
6	F	39	Total	O	0	0
			39	39		

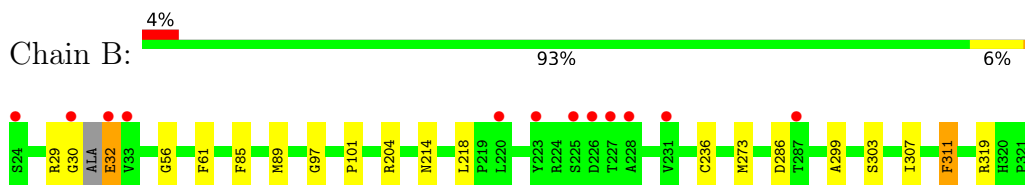
3 Residue-property plots

These plots are drawn for all protein, RNA, DNA and oligosaccharide chains in the entry. The first graphic for a chain summarises the proportions of the various outlier classes displayed in the second graphic. The second graphic shows the sequence view annotated by issues in geometry and electron density. Residues are color-coded according to the number of geometric quality criteria for which they contain at least one outlier: green = 0, yellow = 1, orange = 2 and red = 3 or more. A red dot above a residue indicates a poor fit to the electron density ($RSRZ > 2$). Stretches of 2 or more consecutive residues without any outlier are shown as a green connector. Residues present in the sample, but not in the model, are shown in grey.

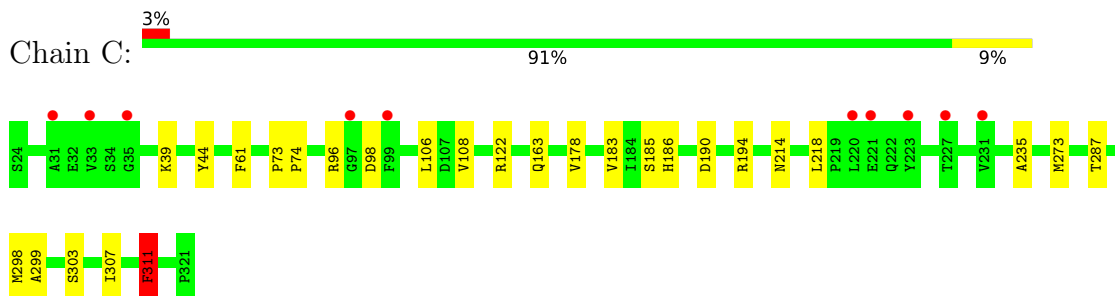
- Molecule 1: Methyltransferase domain protein



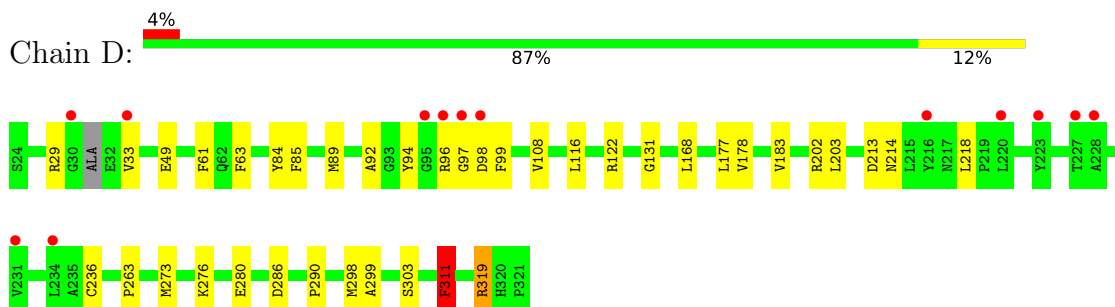
- Molecule 1: Methyltransferase domain protein



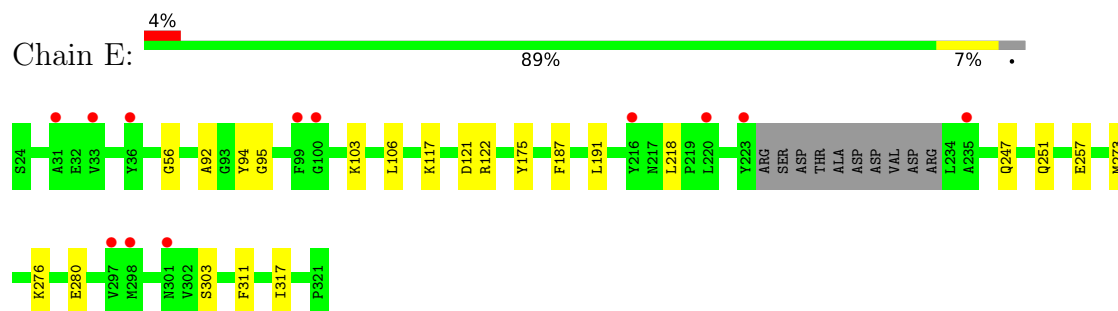
- Molecule 1: Methyltransferase domain protein



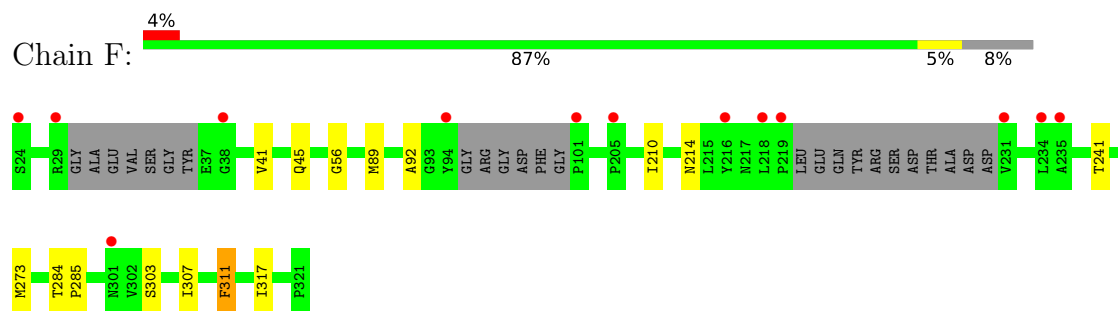
- Molecule 1: Methyltransferase domain protein



- Molecule 1: Methyltransferase domain protein



- Molecule 1: Methyltransferase domain protein



4 Data and refinement statistics

Property	Value	Source
Space group	C 1 2 1	Depositor
Cell constants a, b, c, α , β , γ	261.43Å 100.04Å 89.54Å 90.00° 98.03° 90.00°	Depositor
Resolution (Å)	30.00 – 2.20 30.00 – 2.20	Depositor EDS
% Data completeness (in resolution range)	96.5 (30.00-2.20) 96.5 (30.00-2.20)	Depositor EDS
R_{merge}	0.09	Depositor
R_{sym}	(Not available)	Depositor
$\langle I/\sigma(I) \rangle$ ¹	2.14 (at 2.20Å)	Xtriage
Refinement program	REFMAC 5.8.0267	Depositor
R, R_{free}	0.184 , 0.217 (Not available) , 0.208	Depositor DCC
R_{free} test set	5594 reflections (5.00%)	wwPDB-VP
Wilson B-factor (Å ²)	33.8	Xtriage
Anisotropy	0.351	Xtriage
Bulk solvent k_{sol} (e/Å ³), B_{sol} (Å ²)	0.33 , 41.1	EDS
L-test for twinning ²	$\langle L \rangle = 0.48$, $\langle L^2 \rangle = 0.31$	Xtriage
Estimated twinning fraction	No twinning to report.	Xtriage
F_o, F_c correlation	0.95	EDS
Total number of atoms	15000	wwPDB-VP
Average B, all atoms (Å ²)	45.0	wwPDB-VP

Xtriage's analysis on translational NCS is as follows: *The largest off-origin peak in the Patterson function is 3.37% of the height of the origin peak. No significant pseudotranslation is detected.*

¹Intensities estimated from amplitudes.

²Theoretical values of $\langle |L| \rangle$, $\langle L^2 \rangle$ for acentric reflections are 0.5, 0.333 respectively for untwinned datasets, and 0.375, 0.2 for perfectly twinned datasets.

5 Model quality

5.1 Standard geometry

Bond lengths and bond angles in the following residue types are not validated in this section: FPP, PO4, SAH, MG

The Z score for a bond length (or angle) is the number of standard deviations the observed value is removed from the expected value. A bond length (or angle) with $|Z| > 5$ is considered an outlier worth inspection. RMSZ is the root-mean-square of all Z scores of the bond lengths (or angles).

Mol	Chain	Bond lengths		Bond angles	
		RMSZ	$\# Z > 5$	RMSZ	$\# Z > 5$
1	A	0.96	0/2453	1.37	3/3328 (0.1%)
1	B	0.98	0/2463	1.39	1/3340 (0.0%)
1	C	0.98	0/2469	1.41	3/3350 (0.1%)
1	D	0.97	0/2463	1.38	1/3340 (0.0%)
1	E	0.98	0/2389	1.38	1/3240 (0.0%)
1	F	0.99	0/2283	1.40	2/3094 (0.1%)
All	All	0.98	0/14520	1.39	11/19692 (0.1%)

There are no bond length outliers.

All (11) bond angle outliers are listed below:

Mol	Chain	Res	Type	Atoms	Z	Observed(°)	Ideal(°)
1	E	56	GLY	CA-C-O	-5.64	118.55	122.22
1	A	45	GLN	CB-CA-C	-5.37	101.87	110.79
1	A	44	TYR	CA-C-N	5.33	127.43	120.28
1	A	44	TYR	C-N-CA	5.33	127.43	120.28
1	F	56	GLY	CA-C-O	-5.29	118.58	122.23
1	F	45	GLN	CB-CA-C	-5.26	102.59	110.90
1	D	311	PHE	CA-CB-CG	5.21	119.01	113.80
1	C	44	TYR	CA-C-N	5.16	127.62	120.29
1	C	44	TYR	C-N-CA	5.16	127.62	120.29
1	C	311	PHE	CA-CB-CG	5.01	118.81	113.80
1	B	56	GLY	CA-C-O	-5.00	118.78	122.23

There are no chirality outliers.

There are no planarity outliers.

5.2 Too-close contacts ⓘ

In the following table, the Non-H and H(model) columns list the number of non-hydrogen atoms and hydrogen atoms in the chain respectively. The H(added) column lists the number of hydrogen atoms added and optimized by MolProbity. The Clashes column lists the number of clashes within the asymmetric unit, whereas Symm-Clashes lists symmetry-related clashes.

Mol	Chain	Non-H	H(model)	H(added)	Clashes	Symm-Clashes
1	A	2393	0	2326	22	0
1	B	2403	0	2337	14	0
1	C	2408	0	2343	18	0
1	D	2403	0	2337	27	0
1	E	2329	0	2274	9	0
1	F	2228	0	2190	7	0
2	A	26	0	19	1	0
2	B	26	0	19	0	0
2	C	26	0	19	1	0
2	D	26	0	19	0	0
2	E	26	0	19	0	0
2	F	26	0	19	0	0
3	A	24	0	25	9	0
3	B	24	0	25	4	0
3	C	24	0	25	5	0
3	D	24	0	25	6	0
4	A	1	0	0	0	0
5	A	30	0	0	0	0
5	B	20	0	0	0	0
5	C	30	0	0	0	0
5	D	15	0	0	0	0
5	E	5	0	0	0	0
5	F	10	0	0	0	0
6	A	108	0	0	0	0
6	B	72	0	0	1	0
6	C	77	0	0	0	0
6	D	95	0	0	1	0
6	E	82	0	0	0	0
6	F	39	0	0	0	0
All	All	15000	0	14021	95	0

The all-atom clashscore is defined as the number of clashes found per 1000 atoms (including hydrogen atoms). The all-atom clashscore for this structure is 3.

All (95) close contacts within the same asymmetric unit are listed below, sorted by their clash magnitude.

Atom-1	Atom-2	Interatomic distance (Å)	Clash overlap (Å)
1:A:61:PHE:O	3:A:402:FPP:H112	1.65	0.96
1:D:298:MET:HE1	3:D:402:FPP:H102	1.58	0.83
1:D:61:PHE:O	3:D:402:FPP:H111	1.79	0.82
1:A:62:GLN:OE1	3:A:402:FPP:H111	1.82	0.79
1:D:98:ASP:HB3	1:D:319:ARG:HH22	1.48	0.78
1:C:163:GLN:OE1	1:C:194:ARG:NH2	2.25	0.70
1:D:97:GLY:HA2	6:D:588:HOH:O	1.91	0.69
1:B:236:CYS:SG	3:B:402:FPP:H141	2.34	0.68
1:C:98:ASP:N	1:C:98:ASP:OD1	2.26	0.67
1:B:30:GLY:O	1:B:32:GLU:N	2.31	0.64
1:C:190:ASP:OD1	1:C:194:ARG:NH1	2.36	0.59
1:D:168:LEU:O	1:D:202:ARG:NH2	2.30	0.59
1:A:185:SER:HB2	3:A:402:FPP:H141	1.86	0.58
1:A:214:ASN:ND2	3:A:402:FPP:H142	2.19	0.57
1:A:236:CYS:HB3	3:A:402:FPP:H42	1.87	0.56
1:A:185:SER:CB	3:A:402:FPP:H141	2.34	0.56
1:A:273:MET:HE2	1:A:273:MET:HA	1.88	0.56
1:F:284:THR:HG22	1:F:285:PRO:HD2	1.88	0.56
1:B:236:CYS:SG	3:B:402:FPP:H151	2.47	0.55
1:B:30:GLY:C	1:B:32:GLU:N	2.64	0.55
1:D:214:ASN:HB3	1:D:311:PHE:CZ	2.43	0.54
1:C:214:ASN:HB3	1:C:311:PHE:CZ	2.43	0.54
1:D:63:PHE:CZ	3:D:402:FPP:H91	2.43	0.53
1:F:89:MET:CE	1:F:210:ILE:CD1	2.88	0.52
1:B:97:GLY:HA2	6:B:558:HOH:O	2.09	0.52
1:D:99:PHE:HE1	1:D:177:LEU:HD13	1.74	0.52
1:B:101:PRO:HD2	1:B:204:ARG:NH2	2.24	0.52
1:A:236:CYS:SG	3:A:402:FPP:H151	2.49	0.52
3:C:402:FPP:C8	3:C:402:FPP:H153	2.39	0.52
1:E:187:PHE:CG	1:E:191:LEU:HD12	2.45	0.51
1:A:273:MET:CE	1:A:299:ALA:HB1	2.40	0.51
1:C:273:MET:HE1	1:C:299:ALA:C	2.36	0.51
1:C:185:SER:HB2	3:C:402:FPP:H142	1.93	0.51
1:A:62:GLN:OE1	3:A:402:FPP:C11	2.58	0.51
1:A:61:PHE:O	3:A:402:FPP:C11	2.48	0.49
1:B:273:MET:HE2	1:B:299:ALA:HB1	1.94	0.49
1:B:85:PHE:CE2	1:B:89:MET:HE3	2.48	0.48
1:A:214:ASN:HB3	1:A:311:PHE:CZ	2.47	0.48
1:C:61:PHE:O	3:C:402:FPP:H112	2.13	0.48
1:E:106:LEU:HB2	1:E:175:TYR:CE1	2.49	0.48
1:D:273:MET:HE3	1:D:303:SER:OG	2.14	0.48
1:A:276:LYS:HE2	1:A:300:VAL:HG23	1.96	0.48

Continued on next page...

Continued from previous page...

Atom-1	Atom-2	Interatomic distance (Å)	Clash overlap (Å)
1:D:236:CYS:HB3	3:D:402:FPP:H42	1.96	0.48
1:D:273:MET:HE2	1:D:299:ALA:HB1	1.96	0.48
1:C:298:MET:HE1	3:C:402:FPP:H103	1.96	0.47
1:C:298:MET:HG3	3:C:402:FPP:O1A	2.14	0.47
1:D:29:ARG:HH11	1:D:29:ARG:HG3	1.79	0.47
1:D:108:VAL:O	1:D:183:VAL:HG21	2.14	0.47
1:B:214:ASN:HB3	1:B:311:PHE:CE1	2.49	0.47
1:D:61:PHE:O	3:D:402:FPP:C11	2.57	0.47
1:B:32:GLU:HG2	1:B:32:GLU:O	2.14	0.47
1:B:61:PHE:O	3:B:402:FPP:H112	2.14	0.47
1:A:181:ARG:O	2:A:401:SAH:N	2.48	0.47
1:D:85:PHE:CE2	1:D:89:MET:HE3	2.49	0.46
1:C:303:SER:O	1:C:307:ILE:HG12	2.15	0.46
1:D:61:PHE:CZ	3:D:402:FPP:H101	2.51	0.46
1:D:276:LYS:NZ	1:D:280:GLU:OE1	2.48	0.46
1:E:273:MET:HE3	1:E:303:SER:OG	2.16	0.46
1:F:214:ASN:HB3	1:F:311:PHE:CZ	2.51	0.46
1:A:26:HIS:HD1	1:D:286:ASP:CG	2.24	0.45
1:F:273:MET:HE3	1:F:303:SER:OG	2.17	0.45
1:A:73:PRO:HA	1:A:74:PRO:C	2.41	0.45
1:D:94:TYR:CE1	1:D:122:ARG:NH2	2.80	0.44
1:C:73:PRO:HA	1:C:74:PRO:C	2.42	0.44
1:F:303:SER:O	1:F:307:ILE:HG12	2.17	0.44
1:F:89:MET:HE2	1:F:89:MET:HA	1.99	0.44
1:C:108:VAL:O	1:C:183:VAL:HG21	2.18	0.44
1:C:273:MET:HE3	1:C:303:SER:OG	2.17	0.44
1:D:273:MET:HE1	1:D:299:ALA:C	2.43	0.44
1:C:96:ARG:NH2	1:E:103:LYS:HG2	2.32	0.43
1:A:277:LYS:O	1:A:281:THR:HB	2.18	0.43
1:D:92:ALA:O	1:D:319:ARG:NH1	2.41	0.43
1:E:92:ALA:HA	1:E:317:ILE:HG21	2.00	0.43
1:A:273:MET:HE2	1:A:299:ALA:HB1	2.00	0.43
1:A:84:TYR:CZ	1:A:263:PRO:HD3	2.53	0.43
1:E:117:LYS:NZ	1:E:121:ASP:OD2	2.47	0.43
1:A:30:GLY:C	1:A:32:GLU:H	2.26	0.42
1:D:98:ASP:O	1:D:319:ARG:NH2	2.52	0.42
1:E:276:LYS:NZ	1:E:280:GLU:OE1	2.48	0.42
1:B:214:ASN:HB3	1:B:311:PHE:CZ	2.54	0.42
1:C:273:MET:HE2	1:C:299:ALA:HB1	2.02	0.41
1:B:236:CYS:HB3	3:B:402:FPP:H42	2.01	0.41
1:B:303:SER:O	1:B:307:ILE:HG12	2.21	0.41

Continued on next page...

Continued from previous page...

Atom-1	Atom-2	Interatomic distance (Å)	Clash overlap (Å)
1:C:186:HIS:CD2	2:C:401:SAH:H8	2.55	0.41
1:E:247:GLN:O	1:E:251:GLN:HG3	2.21	0.41
1:D:116:LEU:HD11	1:D:131:GLY:HA3	2.03	0.41
1:D:178:VAL:HG21	1:D:203:LEU:HD21	2.01	0.41
1:A:108:VAL:O	1:A:183:VAL:HG21	2.20	0.41
1:C:39:LYS:HG3	1:C:235:ALA:HB2	2.03	0.41
1:D:84:TYR:CZ	1:D:263:PRO:HD3	2.56	0.41
1:D:94:TYR:CD1	1:D:122:ARG:NH2	2.89	0.41
1:F:92:ALA:HA	1:F:317:ILE:HG21	2.02	0.41
1:C:106:LEU:O	1:C:178:VAL:HA	2.21	0.40
1:E:94:TYR:CG	1:E:95:GLY:N	2.88	0.40
1:A:27:VAL:HG21	1:D:290:PRO:HG3	2.04	0.40

There are no symmetry-related clashes.

5.3 Torsion angles ⓘ

5.3.1 Protein backbone ⓘ

In the following table, the Percentiles column shows the percent Ramachandran outliers of the chain as a percentile score with respect to all X-ray entries followed by that with respect to entries of similar resolution.

The Analysed column shows the number of residues for which the backbone conformation was analysed, and the total number of residues.

Mol	Chain	Analysed	Favoured	Allowed	Outliers	Percentiles	
1	A	292/298 (98%)	281 (96%)	11 (4%)	0	100	100
1	B	293/298 (98%)	285 (97%)	8 (3%)	0	100	100
1	C	296/298 (99%)	285 (96%)	11 (4%)	0	100	100
1	D	293/298 (98%)	282 (96%)	11 (4%)	0	100	100
1	E	284/298 (95%)	275 (97%)	9 (3%)	0	100	100
1	F	266/298 (89%)	256 (96%)	10 (4%)	0	100	100
All	All	1724/1788 (96%)	1664 (96%)	60 (4%)	0	100	100

There are no Ramachandran outliers to report.

5.3.2 Protein sidechains ⓘ

In the following table, the Percentiles column shows the percent sidechain outliers of the chain as a percentile score with respect to all X-ray entries followed by that with respect to entries of similar resolution.

The Analysed column shows the number of residues for which the sidechain conformation was analysed, and the total number of residues.

Mol	Chain	Analysed	Rotameric	Outliers	Percentiles	
1	A	259/260 (100%)	257 (99%)	2 (1%)	73	85
1	B	260/260 (100%)	254 (98%)	6 (2%)	44	59
1	C	260/260 (100%)	256 (98%)	4 (2%)	57	73
1	D	260/260 (100%)	253 (97%)	7 (3%)	39	53
1	E	251/260 (96%)	247 (98%)	4 (2%)	55	71
1	F	243/260 (94%)	240 (99%)	3 (1%)	63	78
All	All	1533/1560 (98%)	1507 (98%)	26 (2%)	53	69

All (26) residues with a non-rotameric sidechain are listed below:

Mol	Chain	Res	Type
1	A	213	ASP
1	A	281	THR
1	B	29	ARG
1	B	32	GLU
1	B	218	LEU
1	B	286	ASP
1	B	311	PHE
1	B	319	ARG
1	C	122	ARG
1	C	218	LEU
1	C	287	THR
1	C	311	PHE
1	D	33	VAL
1	D	49	GLU
1	D	96	ARG
1	D	213	ASP
1	D	218	LEU
1	D	311	PHE
1	D	319	ARG
1	E	122	ARG
1	E	218	LEU
1	E	257	GLU

Continued on next page...

Continued from previous page...

Mol	Chain	Res	Type
1	E	311	PHE
1	F	41	VAL
1	F	241	THR
1	F	311	PHE

Sometimes sidechains can be flipped to improve hydrogen bonding and reduce clashes. All (10) such sidechains are listed below:

Mol	Chain	Res	Type
1	B	255	ASN
1	C	247	GLN
1	C	255	ASN
1	D	149	HIS
1	D	189	ASN
1	E	149	HIS
1	E	222	GLN
1	E	238	HIS
1	E	310	GLN
1	F	45	GLN

5.3.3 RNA [i](#)

There are no RNA molecules in this entry.

5.4 Non-standard residues in protein, DNA, RNA chains [i](#)

There are no non-standard protein/DNA/RNA residues in this entry.

5.5 Carbohydrates [i](#)

There are no oligosaccharides in this entry.

5.6 Ligand geometry [i](#)

Of 33 ligands modelled in this entry, 1 is monoatomic - leaving 32 for Mogul analysis.

In the following table, the Counts columns list the number of bonds (or angles) for which Mogul statistics could be retrieved, the number of bonds (or angles) that are observed in the model and the number of bonds (or angles) that are defined in the Chemical Component Dictionary. The Link column lists molecule types, if any, to which the group is linked. The Z score for a bond

length (or angle) is the number of standard deviations the observed value is removed from the expected value. A bond length (or angle) with $|Z| > 2$ is considered an outlier worth inspection. RMSZ is the root-mean-square of all Z scores of the bond lengths (or angles).

Mol	Type	Chain	Res	Link	Bond lengths			Bond angles		
					Counts	RMSZ	$\# Z > 2$	Counts	RMSZ	$\# Z > 2$
3	FPP	C	402	-	22,23,23	0.50	0	27,31,31	0.62	0
5	PO4	A	407	-	4,4,4	0.70	0	6,6,6	0.46	0
5	PO4	C	406	-	4,4,4	0.74	0	6,6,6	0.47	0
2	SAH	E	401	-	27,28,28	0.49	1 (3%)	36,40,40	0.65	1 (2%)
5	PO4	C	403	-	4,4,4	0.70	0	6,6,6	0.46	0
3	FPP	A	402	4	22,23,23	0.61	0	27,31,31	0.60	0
5	PO4	B	404	-	4,4,4	0.67	0	6,6,6	0.46	0
2	SAH	A	401	-	27,28,28	0.81	1 (3%)	36,40,40	0.68	1 (2%)
5	PO4	A	408	-	4,4,4	0.75	0	6,6,6	0.44	0
5	PO4	D	403	-	4,4,4	0.64	0	6,6,6	0.47	0
5	PO4	E	402	-	4,4,4	0.66	0	6,6,6	0.48	0
3	FPP	D	402	-	22,23,23	0.53	0	27,31,31	0.53	0
5	PO4	C	407	-	4,4,4	0.74	0	6,6,6	0.44	0
5	PO4	B	406	-	4,4,4	0.77	0	6,6,6	0.46	0
5	PO4	A	406	-	4,4,4	0.74	0	6,6,6	0.46	0
5	PO4	C	408	-	4,4,4	0.70	0	6,6,6	0.46	0
5	PO4	B	405	-	4,4,4	0.73	0	6,6,6	0.47	0
2	SAH	F	401	-	27,28,28	0.47	1 (3%)	36,40,40	0.57	1 (2%)
5	PO4	F	403	-	4,4,4	0.73	0	6,6,6	0.45	0
5	PO4	C	404	-	4,4,4	0.69	0	6,6,6	0.46	0
5	PO4	D	405	-	4,4,4	0.67	0	6,6,6	0.48	0
5	PO4	F	402	-	4,4,4	0.71	0	6,6,6	0.45	0
2	SAH	B	401	-	27,28,28	0.48	1 (3%)	36,40,40	0.58	1 (2%)
5	PO4	C	405	-	4,4,4	0.70	0	6,6,6	0.44	0
3	FPP	B	402	-	22,23,23	0.54	0	27,31,31	0.53	0
2	SAH	C	401	-	27,28,28	0.49	1 (3%)	36,40,40	0.66	1 (2%)
5	PO4	A	409	-	4,4,4	0.71	0	6,6,6	0.46	0
2	SAH	D	401	-	27,28,28	0.51	1 (3%)	36,40,40	0.61	1 (2%)
5	PO4	D	404	-	4,4,4	0.70	0	6,6,6	0.51	0
5	PO4	A	404	-	4,4,4	0.71	0	6,6,6	0.46	0
5	PO4	B	403	-	4,4,4	0.71	0	6,6,6	0.47	0
5	PO4	A	405	-	4,4,4	0.69	0	6,6,6	0.45	0

In the following table, the Chirals column lists the number of chiral outliers, the number of chiral centers analysed, the number of these observed in the model and the number defined in the Chemical Component Dictionary. Similar counts are reported in the Torsion and Rings columns. '-' means no outliers of that kind were identified.

Mol	Type	Chain	Res	Link	Chirals	Torsions	Rings
2	SAH	C	401	-	-	3/15/31/31	0/3/3/3
3	FPP	B	402	-	-	13/25/25/25	-
3	FPP	C	402	-	-	8/25/25/25	-
2	SAH	D	401	-	-	3/15/31/31	0/3/3/3
3	FPP	D	402	-	-	8/25/25/25	-
2	SAH	E	401	-	-	4/15/31/31	0/3/3/3
2	SAH	B	401	-	-	3/15/31/31	0/3/3/3
3	FPP	A	402	4	-	10/25/25/25	-
2	SAH	F	401	-	-	3/15/31/31	0/3/3/3
2	SAH	A	401	-	-	1/15/31/31	0/3/3/3

All (6) bond length outliers are listed below:

Mol	Chain	Res	Type	Atoms	Z	Observed(Å)	Ideal(Å)
2	A	401	SAH	OXT-C	-3.30	1.20	1.30
2	D	401	SAH	OXT-C	-2.27	1.23	1.30
2	C	401	SAH	OXT-C	-2.25	1.23	1.30
2	B	401	SAH	OXT-C	-2.18	1.23	1.30
2	E	401	SAH	OXT-C	-2.17	1.23	1.30
2	F	401	SAH	OXT-C	-2.04	1.24	1.30

All (6) bond angle outliers are listed below:

Mol	Chain	Res	Type	Atoms	Z	Observed(°)	Ideal(°)
2	F	401	SAH	OXT-C-O	-2.53	118.34	124.08
2	C	401	SAH	OXT-C-O	-2.51	118.39	124.08
2	D	401	SAH	OXT-C-O	-2.29	118.88	124.08
2	E	401	SAH	OXT-C-O	-2.18	119.14	124.08
2	A	401	SAH	O2'-C2'-C1'	2.15	117.50	110.10
2	B	401	SAH	OXT-C-O	-2.14	119.24	124.08

There are no chirality outliers.

All (56) torsion outliers are listed below:

Mol	Chain	Res	Type	Atoms
2	B	401	SAH	N-CA-CB-CG
2	B	401	SAH	C-CA-CB-CG
2	E	401	SAH	C4'-C5'-SD-CG
3	B	402	FPP	C1-O1-PA-O2A
3	B	402	FPP	C1-O1-PA-O3A

Continued on next page...

Continued from previous page...

Mol	Chain	Res	Type	Atoms
3	B	402	FPP	PA-O3A-PB-O2B
3	A	402	FPP	C11-C12-C13-C15
3	B	402	FPP	C11-C12-C13-C15
3	C	402	FPP	C11-C12-C13-C14
3	C	402	FPP	C11-C12-C13-C15
3	D	402	FPP	C11-C12-C13-C14
3	A	402	FPP	C11-C12-C13-C14
3	D	402	FPP	C11-C12-C13-C15
3	B	402	FPP	C11-C12-C13-C14
3	D	402	FPP	C4-C3-C5-C6
3	C	402	FPP	C9-C11-C12-C13
2	F	401	SAH	C-CA-CB-CG
3	C	402	FPP	C2-C3-C5-C6
3	C	402	FPP	C4-C3-C5-C6
3	D	402	FPP	C2-C3-C5-C6
3	B	402	FPP	C10-C8-C9-C11
3	A	402	FPP	C7-C8-C9-C11
3	A	402	FPP	C10-C8-C9-C11
3	B	402	FPP	C7-C8-C9-C11
3	B	402	FPP	C4-C3-C5-C6
3	B	402	FPP	C1-C2-C3-C5
3	D	402	FPP	C1-C2-C3-C5
3	A	402	FPP	C6-C7-C8-C10
3	A	402	FPP	PA-O3A-PB-O1B
3	C	402	FPP	PA-O3A-PB-O1B
2	C	401	SAH	C-CA-CB-CG
2	D	401	SAH	C-CA-CB-CG
2	E	401	SAH	C-CA-CB-CG
2	D	401	SAH	N-CA-CB-CG
2	E	401	SAH	N-CA-CB-CG
2	F	401	SAH	N-CA-CB-CG
3	B	402	FPP	C2-C3-C5-C6
3	B	402	FPP	C1-O1-PA-O1A
2	B	401	SAH	C4'-C5'-SD-CG
2	C	401	SAH	C4'-C5'-SD-CG
2	D	401	SAH	C4'-C5'-SD-CG
3	B	402	FPP	PB-O3A-PA-O2A
3	D	402	FPP	PB-O3A-PA-O2A
2	A	401	SAH	C-CA-CB-CG
3	A	402	FPP	C4-C3-C5-C6
3	B	402	FPP	C1-C2-C3-C4
3	D	402	FPP	C1-C2-C3-C4

Continued on next page...

Continued from previous page...

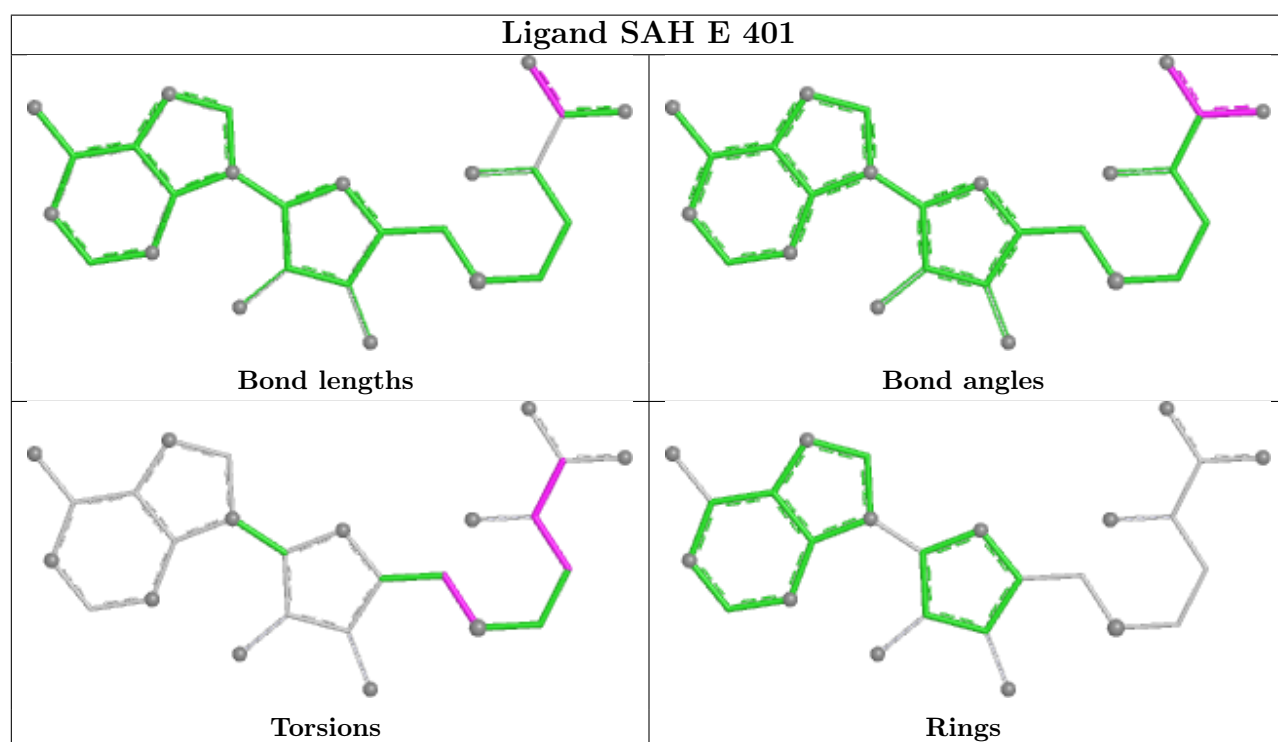
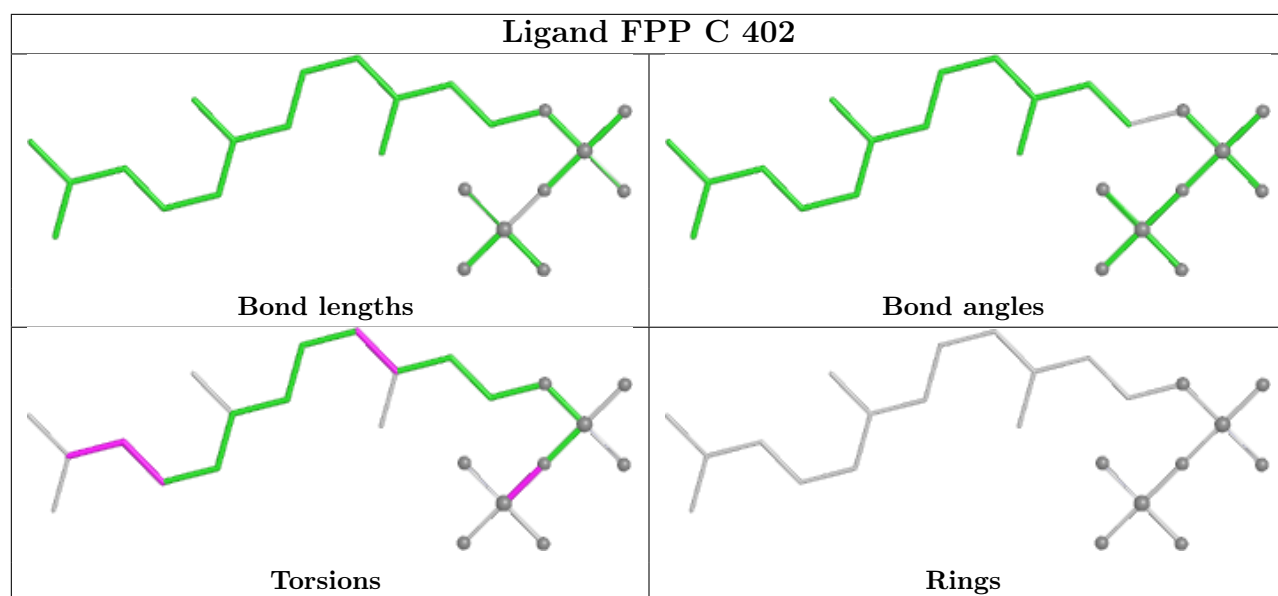
Mol	Chain	Res	Type	Atoms
3	A	402	FPP	C2-C3-C5-C6
3	A	402	FPP	PA-O3A-PB-O2B
3	A	402	FPP	PA-O3A-PB-O3B
3	C	402	FPP	PA-O3A-PB-O2B
3	C	402	FPP	PA-O3A-PB-O3B
2	F	401	SAH	C4'-C5'-SD-CG
3	D	402	FPP	C9-C11-C12-C13
2	C	401	SAH	N-CA-CB-CG
2	E	401	SAH	OXT-C-CA-N

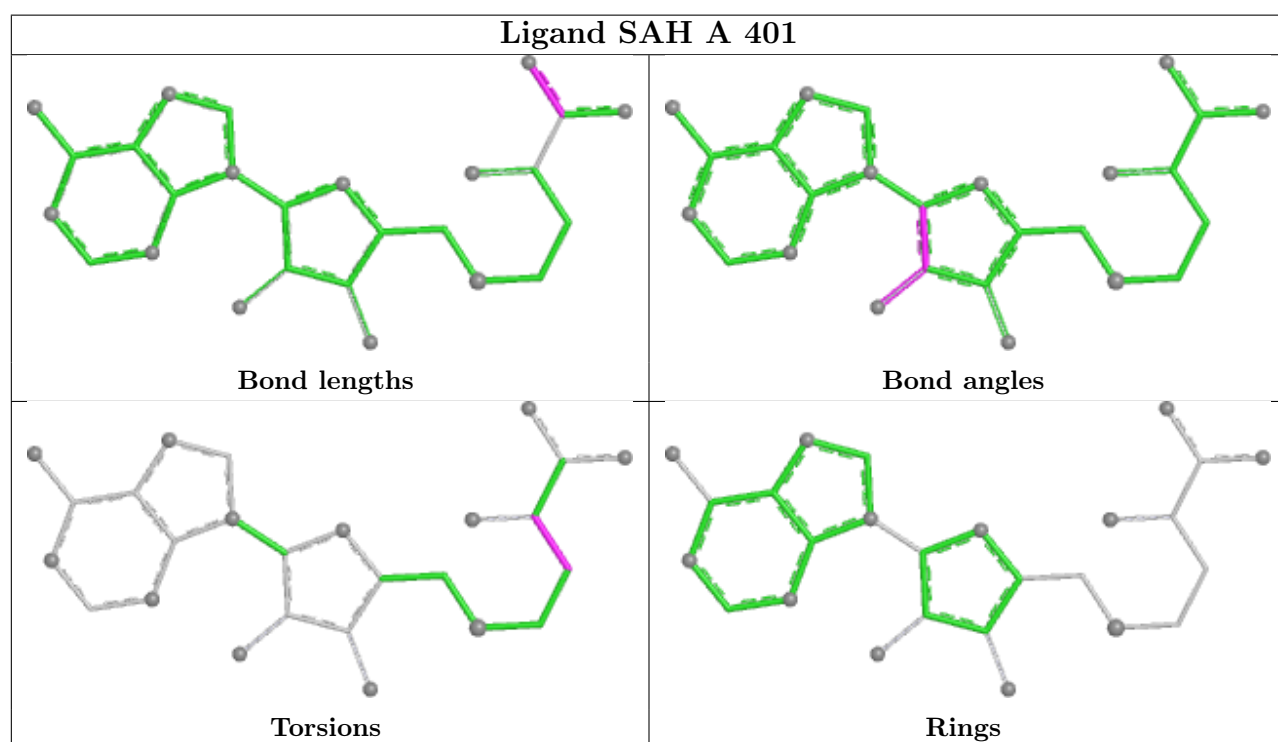
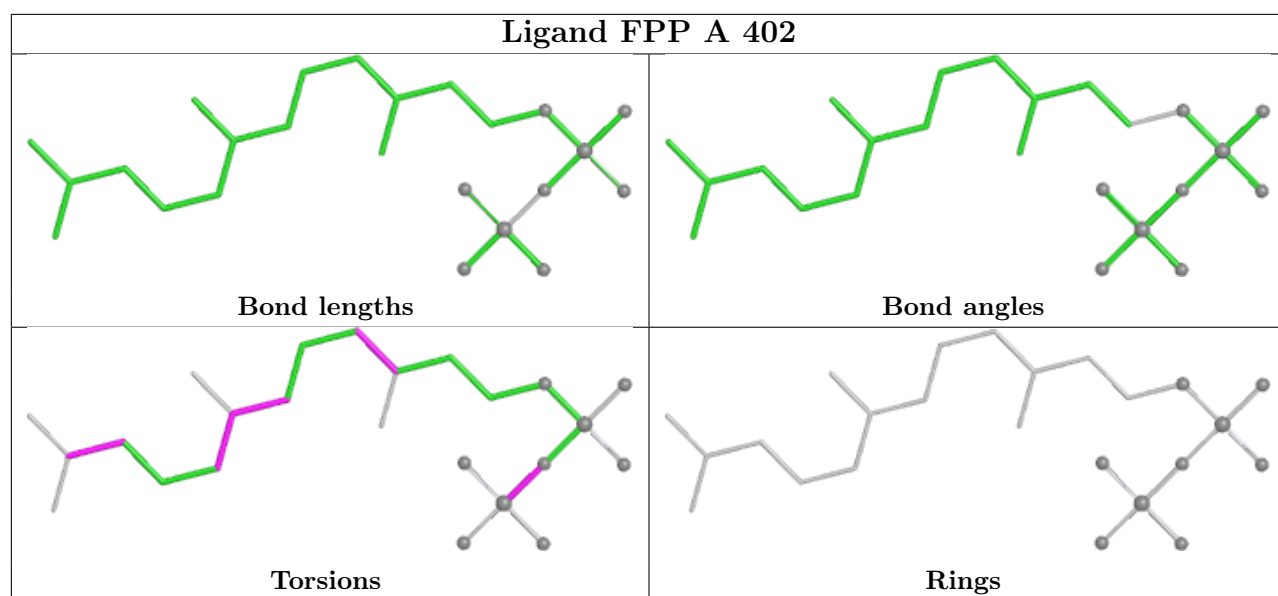
There are no ring outliers.

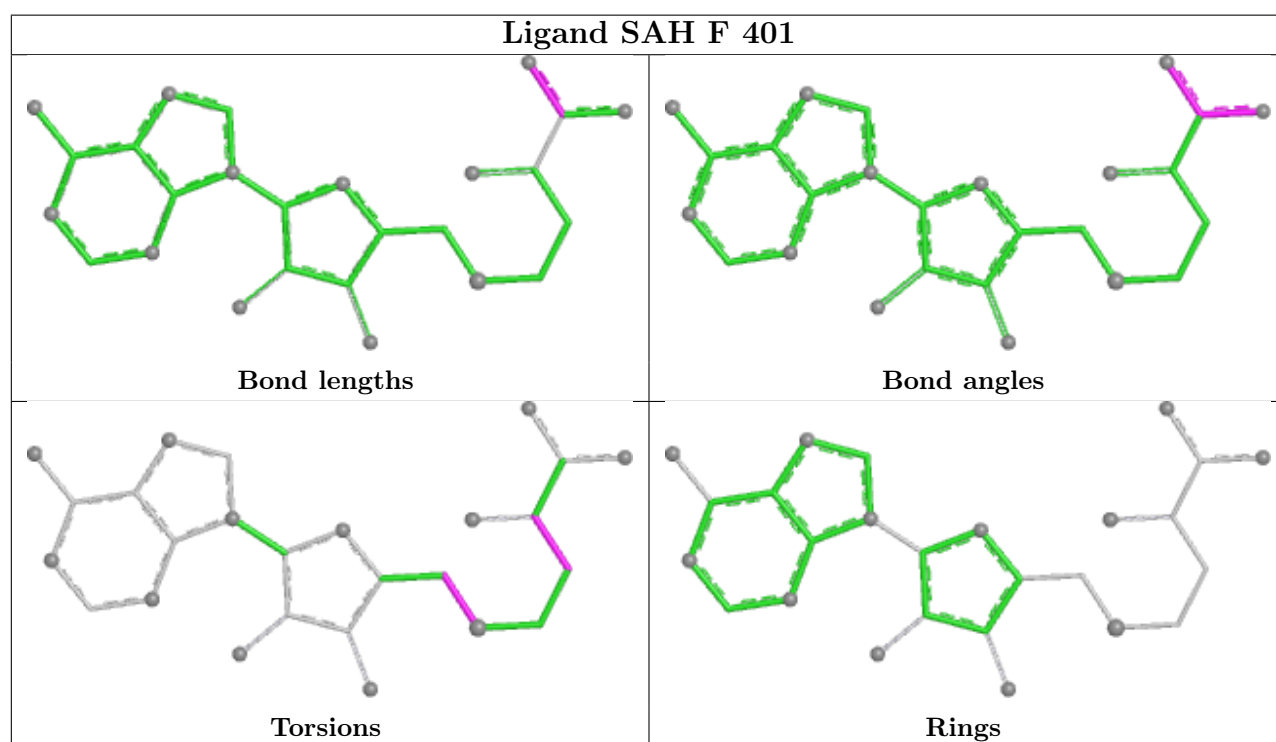
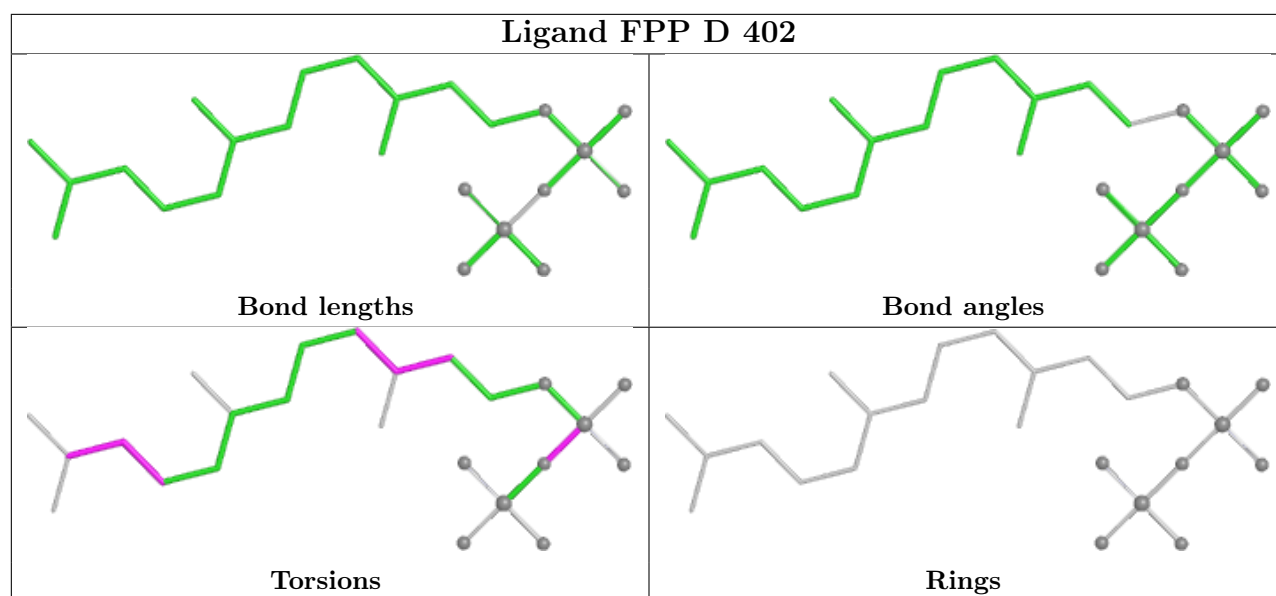
6 monomers are involved in 26 short contacts:

Mol	Chain	Res	Type	Clashes	Symm-Clashes
3	C	402	FPP	5	0
3	A	402	FPP	9	0
2	A	401	SAH	1	0
3	D	402	FPP	6	0
3	B	402	FPP	4	0
2	C	401	SAH	1	0

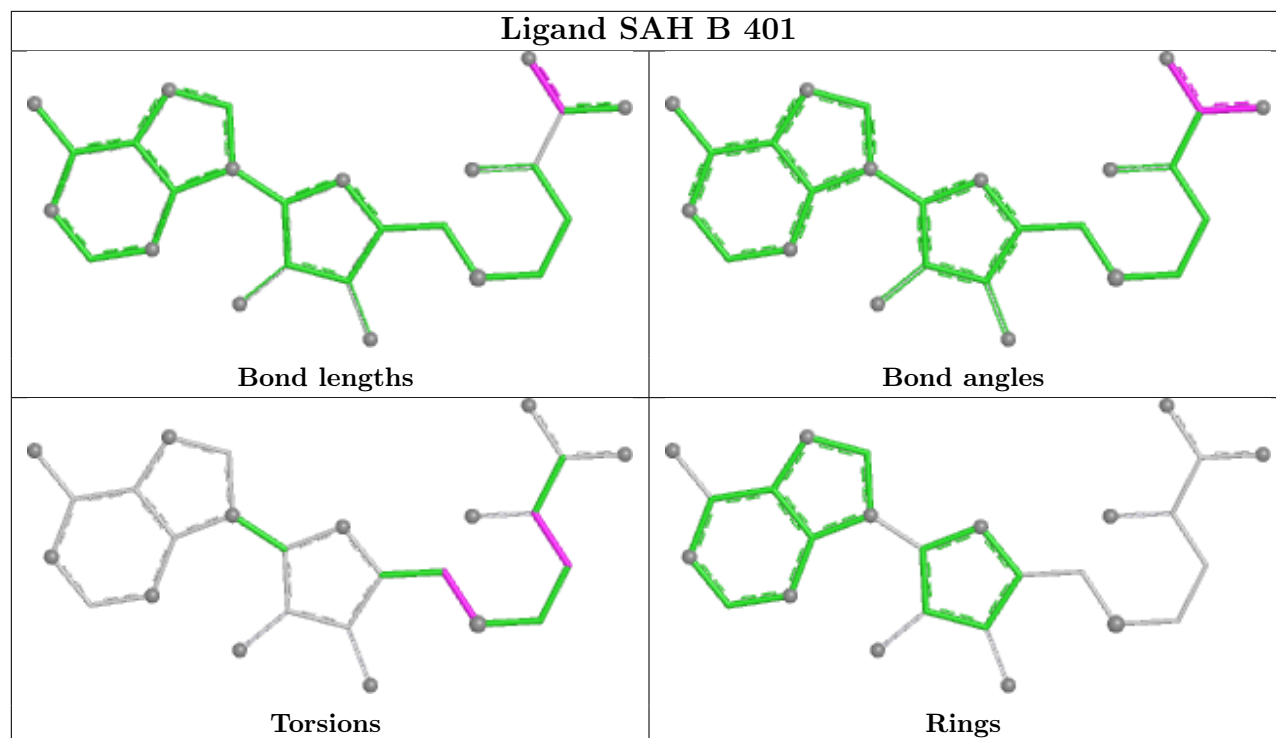
The following is a two-dimensional graphical depiction of Mogul quality analysis of bond lengths, bond angles, torsion angles, and ring geometry for all instances of the Ligand of Interest. In addition, ligands with molecular weight > 250 and outliers as shown on the validation Tables will also be included. For torsion angles, if less than 5% of the Mogul distribution of torsion angles is within 10 degrees of the torsion angle in question, then that torsion angle is considered an outlier. Any bond that is central to one or more torsion angles identified as an outlier by Mogul will be highlighted in the graph. For rings, the root-mean-square deviation (RMSD) between the ring in question and similar rings identified by Mogul is calculated over all ring torsion angles. If the average RMSD is greater than 60 degrees and the minimal RMSD between the ring in question and any Mogul-identified rings is also greater than 60 degrees, then that ring is considered an outlier. The outliers are highlighted in purple. The color gray indicates Mogul did not find sufficient equivalents in the CSD to analyse the geometry.



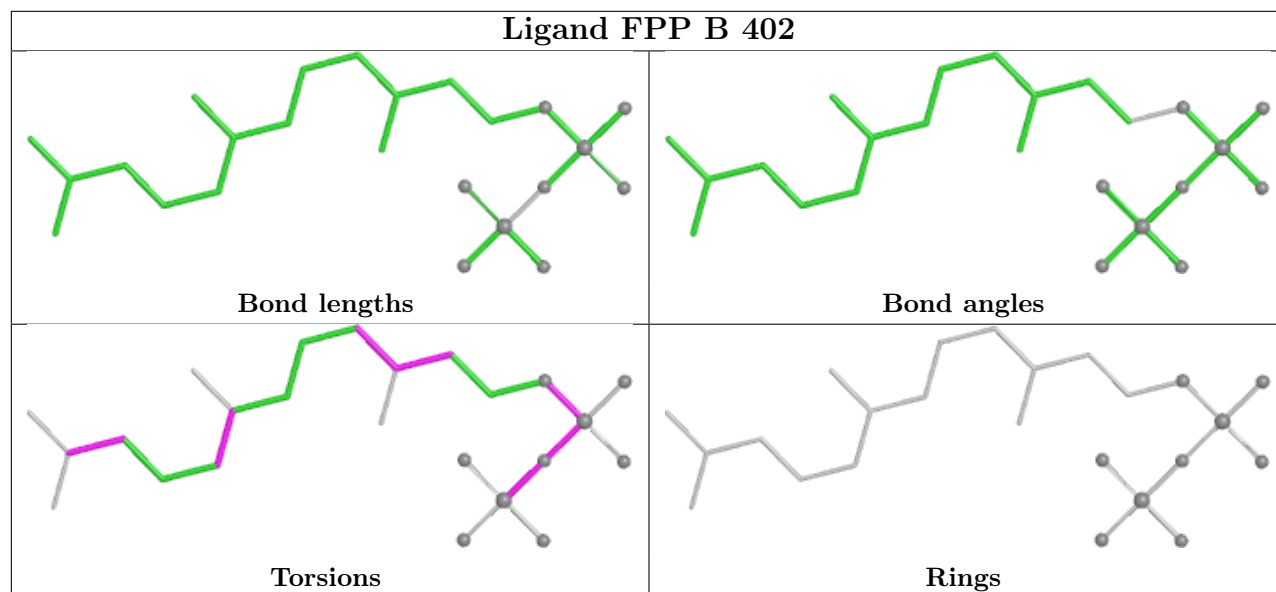


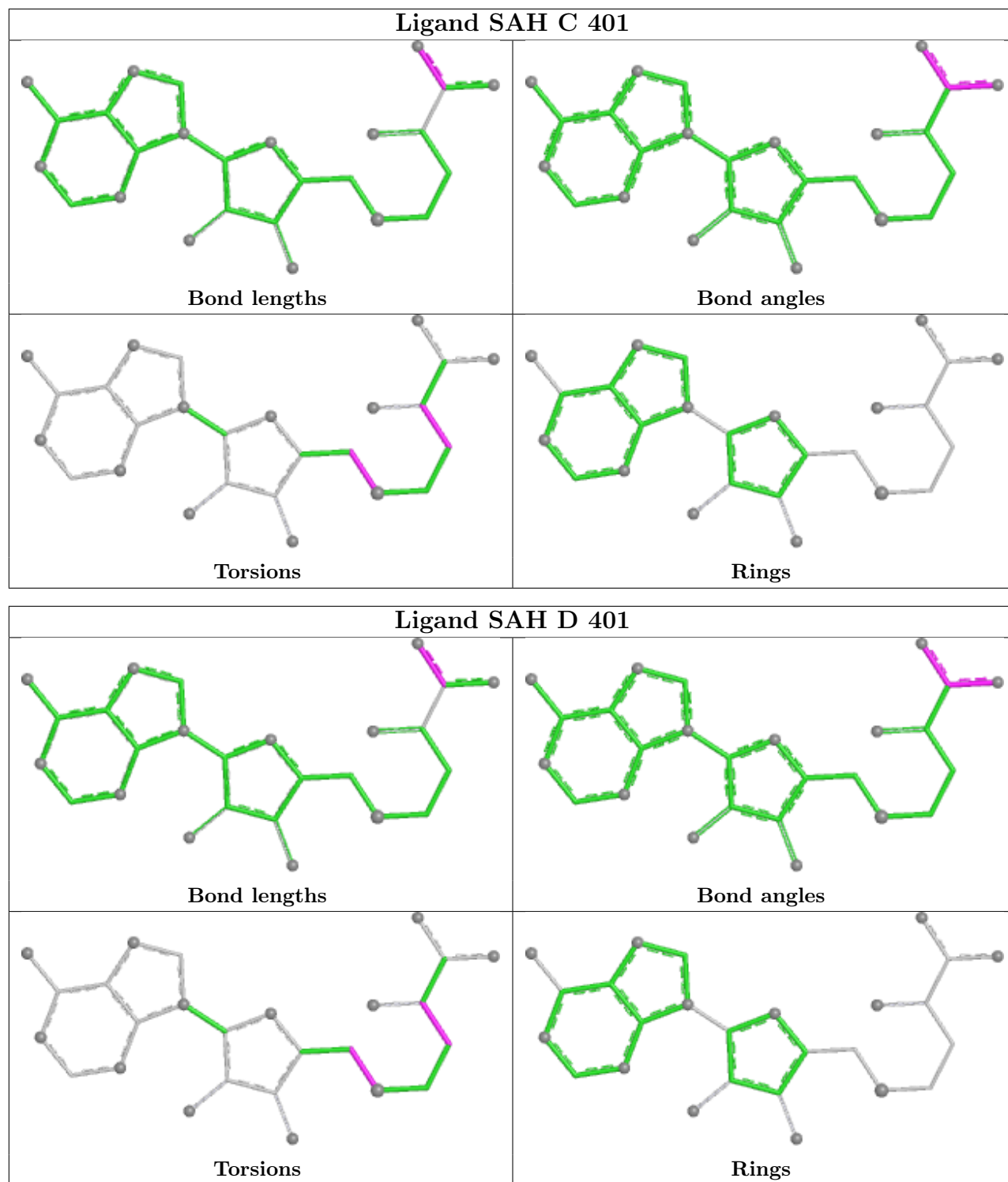


Ligand SAH B 401



Ligand FPP B 402





5.7 Other polymers [i](#)

There are no such residues in this entry.

5.8 Polymer linkage issues ⓘ

There are no chain breaks in this entry.

6 Fit of model and data

6.1 Protein, DNA and RNA chains

In the following table, the column labelled ‘#RSRZ > 2’ contains the number (and percentage) of RSRZ outliers, followed by percent RSRZ outliers for the chain as percentile scores relative to all X-ray entries and entries of similar resolution. The OWAB column contains the minimum, median, 95th percentile and maximum values of the occupancy-weighted average B-factor per residue. The column labelled ‘Q < 0.9’ lists the number of (and percentage) of residues with an average occupancy less than 0.9.

Mol	Chain	Analysed	<RSRZ>	#RSRZ>2	OWAB(Å ²)	Q<0.9
1	A	296/298 (99%)	-0.19	6 (2%) 65 62	21, 34, 69, 87	0
1	B	297/298 (99%)	0.01	12 (4%) 42 39	25, 43, 84, 106	0
1	C	298/298 (100%)	-0.01	10 (3%) 48 45	27, 41, 82, 108	0
1	D	297/298 (99%)	-0.01	13 (4%) 39 36	24, 37, 83, 103	0
1	E	288/298 (96%)	-0.08	12 (4%) 40 37	26, 39, 73, 108	0
1	F	274/298 (91%)	0.37	13 (4%) 36 33	31, 57, 89, 107	0
All	All	1750/1788 (97%)	0.01	66 (3%) 44 41	21, 41, 83, 108	0

All (66) RSRZ outliers are listed below:

Mol	Chain	Res	Type	RSRZ
1	E	31	ALA	4.4
1	D	231	VAL	4.3
1	D	30	GLY	4.2
1	F	219	PRO	4.2
1	F	231	VAL	4.1
1	E	33	VAL	4.0
1	B	227	THR	3.9
1	E	223	TYR	3.8
1	B	30	GLY	3.8
1	A	231	VAL	3.8
1	D	33	VAL	3.8
1	C	227	THR	3.6
1	D	220	LEU	3.4
1	A	31	ALA	3.4
1	F	101	PRO	3.3
1	D	234	LEU	3.3
1	C	231	VAL	3.3
1	B	223	TYR	3.2
1	D	97	GLY	3.2

Continued on next page...

Continued from previous page...

Mol	Chain	Res	Type	RSRZ
1	A	227	THR	3.2
1	F	29	ARG	3.1
1	B	24	SER	3.0
1	F	234	LEU	3.0
1	B	33	VAL	3.0
1	A	98	ASP	3.0
1	B	228	ALA	2.9
1	C	31	ALA	2.9
1	D	228	ALA	2.9
1	C	223	TYR	2.9
1	B	231	VAL	2.8
1	A	225	SER	2.7
1	D	227	THR	2.7
1	D	223	TYR	2.6
1	E	36	TYR	2.6
1	E	301	ASN	2.6
1	F	218	LEU	2.6
1	F	38	GLY	2.6
1	E	235	ALA	2.5
1	F	301	ASN	2.5
1	F	94	TYR	2.5
1	C	97	GLY	2.5
1	E	100	GLY	2.5
1	B	220	LEU	2.5
1	D	96	ARG	2.4
1	C	33	VAL	2.4
1	E	220	LEU	2.4
1	C	35	GLY	2.3
1	F	24	SER	2.3
1	F	216	TYR	2.2
1	D	95	GLY	2.2
1	B	32	GLU	2.2
1	D	216	TYR	2.2
1	F	205	PRO	2.2
1	A	220	LEU	2.2
1	C	220	LEU	2.1
1	E	298	MET	2.1
1	E	99	PHE	2.1
1	F	235	ALA	2.1
1	B	225	SER	2.1
1	B	226	ASP	2.1
1	B	287	THR	2.1

Continued on next page...

Continued from previous page...

Mol	Chain	Res	Type	RSRZ
1	C	221	GLU	2.1
1	E	297	VAL	2.1
1	D	98	ASP	2.0
1	E	216	TYR	2.0
1	C	99	PHE	2.0

6.2 Non-standard residues in protein, DNA, RNA chains [i](#)

There are no non-standard protein/DNA/RNA residues in this entry.

6.3 Carbohydrates [i](#)

There are no oligosaccharides in this entry.

6.4 Ligands [i](#)

In the following table, the Atoms column lists the number of modelled atoms in the group and the number defined in the chemical component dictionary. The B-factors column lists the minimum, median, 95th percentile and maximum values of B factors of atoms in the group. The column labelled 'Q< 0.9' lists the number of atoms with occupancy less than 0.9.

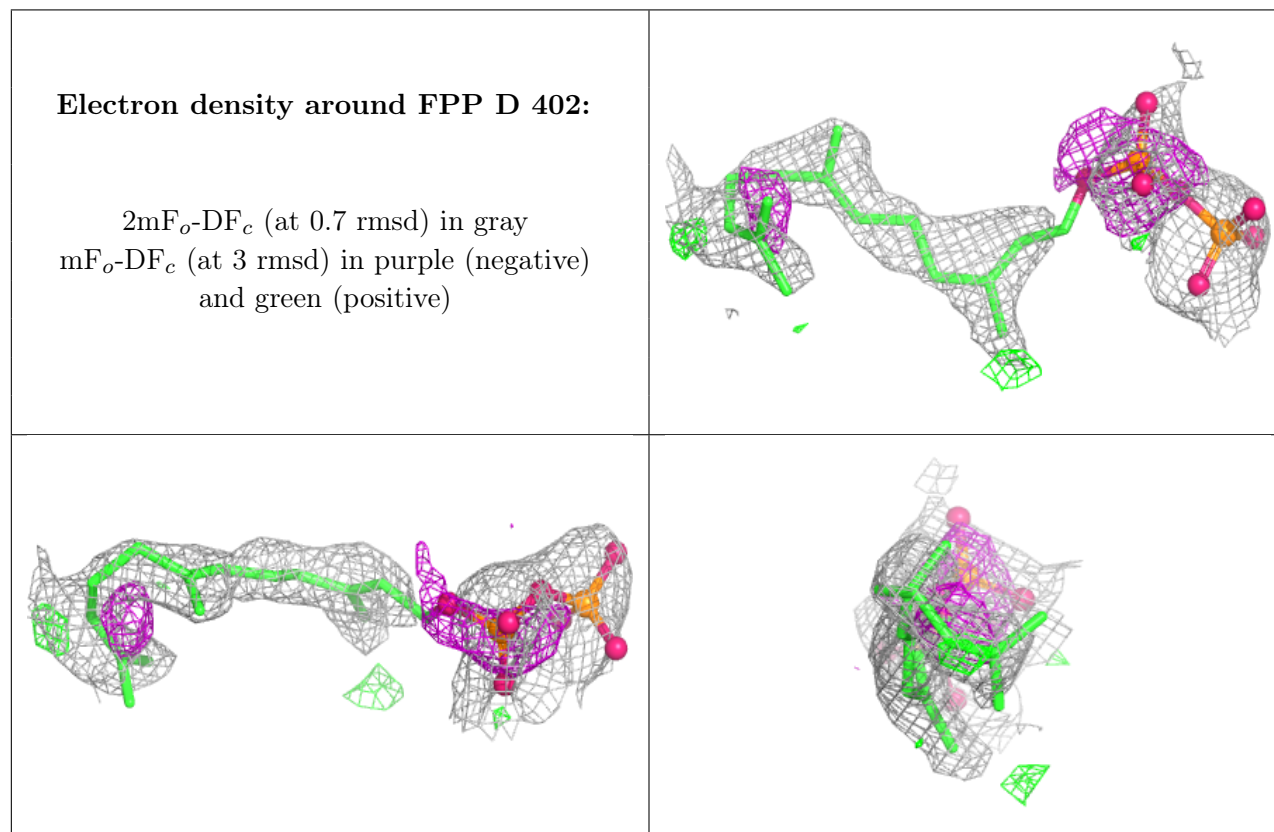
Mol	Type	Chain	Res	Atoms	RSCC	RSR	B-factors(Å ²)	Q<0.9
5	PO4	C	408	5/5	0.78	0.11	84,90,91,95	0
3	FPP	D	402	24/24	0.79	0.17	49,65,100,105	0
3	FPP	C	402	24/24	0.81	0.17	56,66,85,87	0
5	PO4	C	407	5/5	0.83	0.10	78,79,83,89	0
3	FPP	A	402	24/24	0.84	0.16	46,53,73,75	0
5	PO4	D	403	5/5	0.84	0.10	72,72,74,75	0
3	FPP	B	402	24/24	0.85	0.16	54,62,79,81	0
5	PO4	A	406	5/5	0.88	0.11	79,86,86,90	0
5	PO4	E	402	5/5	0.88	0.11	67,69,74,77	0
5	PO4	F	403	5/5	0.88	0.08	77,83,86,87	0
5	PO4	B	406	5/5	0.89	0.08	74,74,76,79	0
5	PO4	D	405	5/5	0.89	0.12	67,69,72,73	0
5	PO4	A	408	5/5	0.90	0.16	69,69,71,73	0
5	PO4	B	405	5/5	0.90	0.14	67,70,74,76	0
5	PO4	F	402	5/5	0.90	0.11	65,66,67,68	0
5	PO4	A	407	5/5	0.90	0.10	66,67,68,70	0
5	PO4	B	403	5/5	0.93	0.11	58,59,61,63	0
5	PO4	C	404	5/5	0.93	0.13	68,69,71,74	0

Continued on next page...

Continued from previous page...

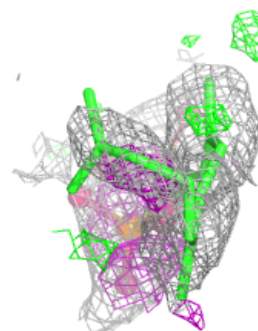
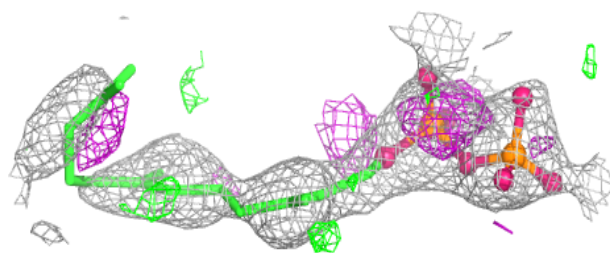
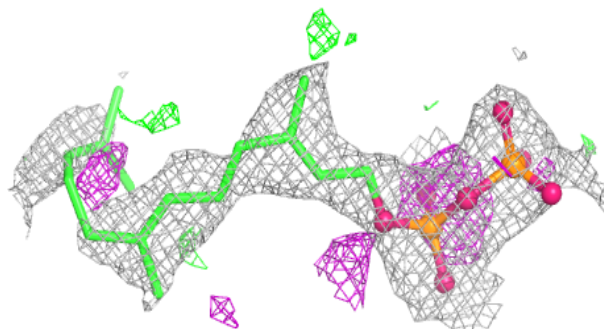
Mol	Type	Chain	Res	Atoms	RSCC	RSR	B-factors(\AA^2)	Q<0.9
2	SAH	F	401	26/26	0.93	0.09	44,46,48,51	0
5	PO4	B	404	5/5	0.94	0.10	69,69,74,77	0
5	PO4	A	409	5/5	0.94	0.08	73,73,74,75	0
5	PO4	C	405	5/5	0.94	0.12	54,60,62,65	0
5	PO4	D	404	5/5	0.94	0.10	45,46,52,55	0
5	PO4	C	403	5/5	0.95	0.09	63,64,68,70	0
2	SAH	C	401	26/26	0.96	0.06	31,36,37,39	0
5	PO4	A	404	5/5	0.96	0.09	43,45,47,48	0
2	SAH	E	401	26/26	0.96	0.06	29,31,34,35	0
2	SAH	B	401	26/26	0.97	0.06	30,33,35,36	0
5	PO4	C	406	5/5	0.97	0.10	43,44,46,48	0
5	PO4	A	405	5/5	0.97	0.09	43,44,47,47	0
2	SAH	A	401	26/26	0.97	0.06	24,26,27,28	0
2	SAH	D	401	26/26	0.97	0.06	28,29,32,33	0
4	MG	A	403	1/1	0.98	0.07	61,61,61,61	0

The following is a graphical depiction of the model fit to experimental electron density of all instances of the Ligand of Interest. In addition, ligands with molecular weight > 250 and outliers as shown on the geometry validation Tables will also be included. Each fit is shown from different orientation to approximate a three-dimensional view.

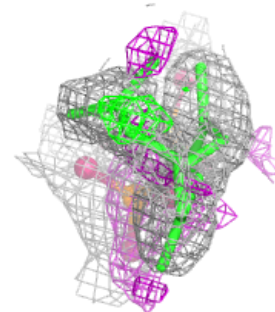
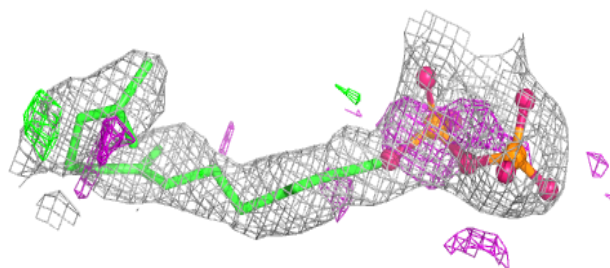
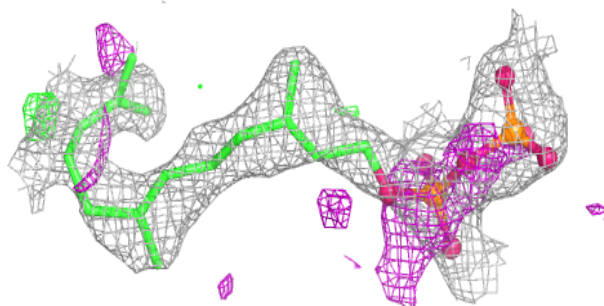


Electron density around FPP C 402:

$2mF_o-DF_c$ (at 0.7 rmsd) in gray
 mF_o-DF_c (at 3 rmsd) in purple (negative)
and green (positive)

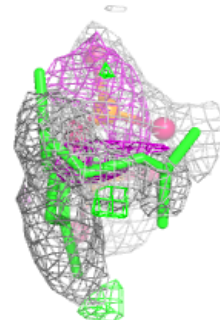
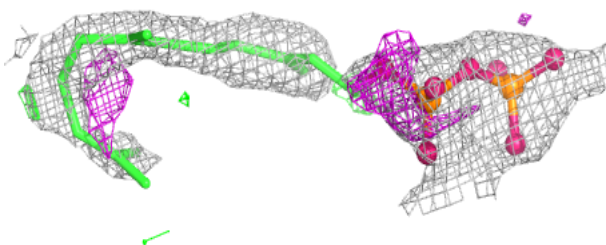
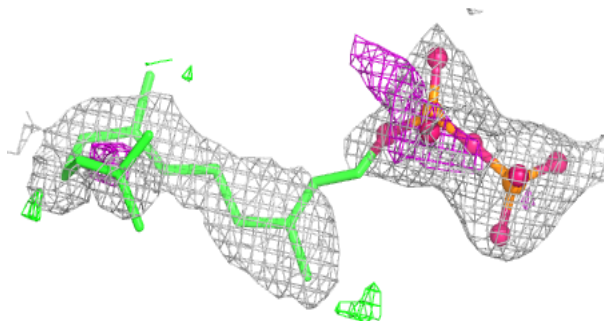
**Electron density around FPP A 402:**

$2mF_o-DF_c$ (at 0.7 rmsd) in gray
 mF_o-DF_c (at 3 rmsd) in purple (negative)
and green (positive)

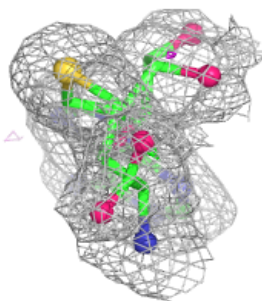
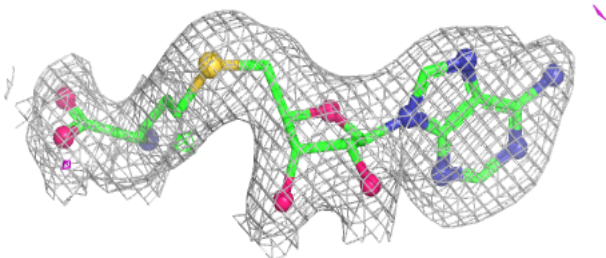
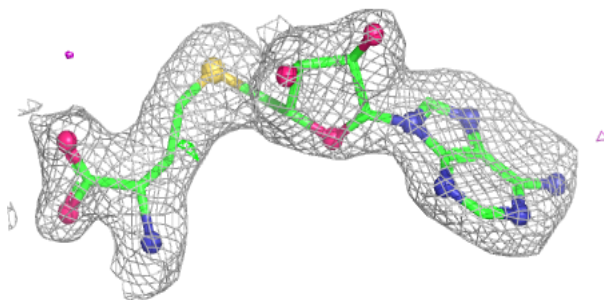


Electron density around FPP B 402:

$2mF_o-DF_c$ (at 0.7 rmsd) in gray
 mF_o-DF_c (at 3 rmsd) in purple (negative)
and green (positive)

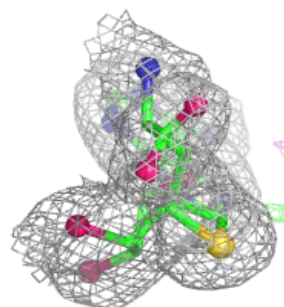
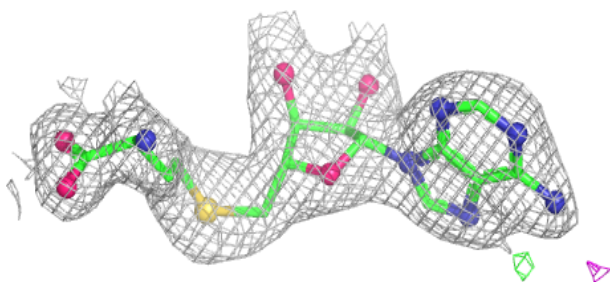
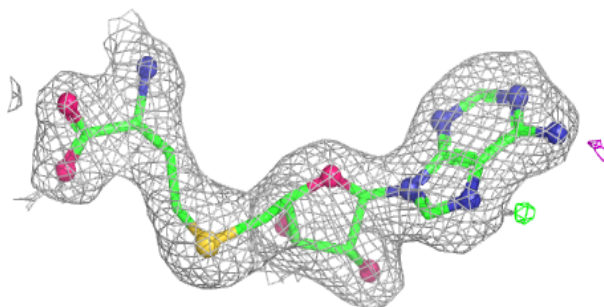
**Electron density around SAH F 401:**

$2mF_o-DF_c$ (at 0.7 rmsd) in gray
 mF_o-DF_c (at 3 rmsd) in purple (negative)
and green (positive)

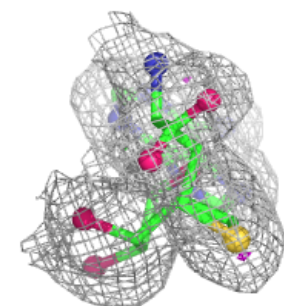
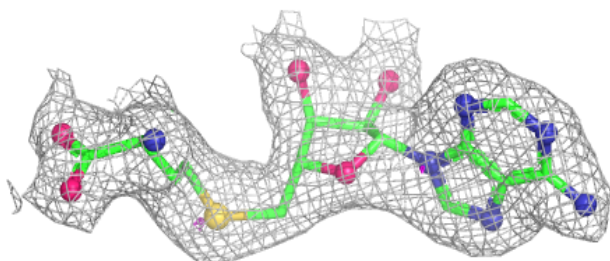
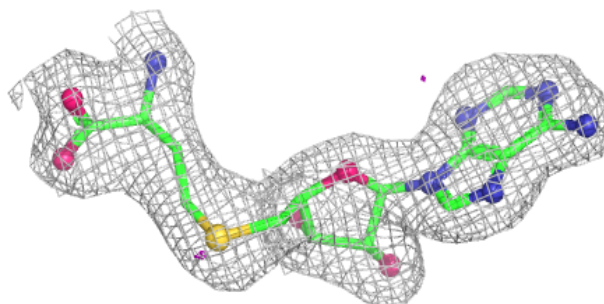


Electron density around SAH C 401:

$2mF_o-DF_c$ (at 0.7 rmsd) in gray
 mF_o-DF_c (at 3 rmsd) in purple (negative)
and green (positive)

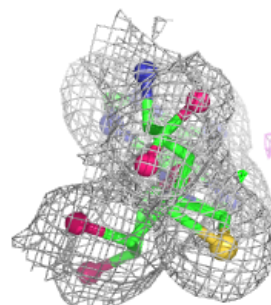
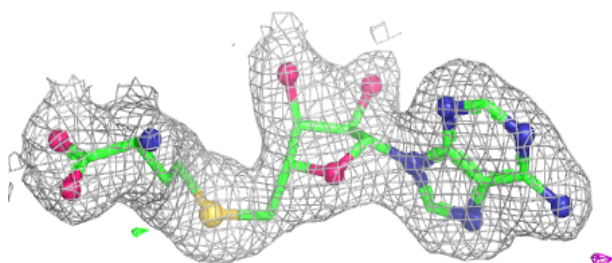
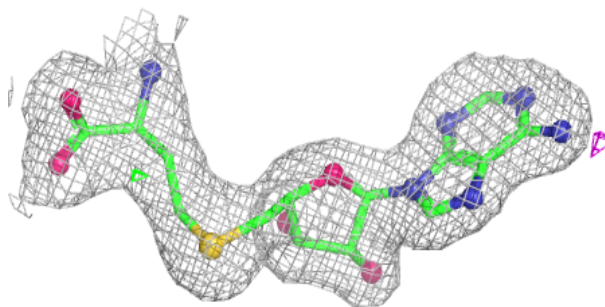
**Electron density around SAH E 401:**

$2mF_o-DF_c$ (at 0.7 rmsd) in gray
 mF_o-DF_c (at 3 rmsd) in purple (negative)
and green (positive)

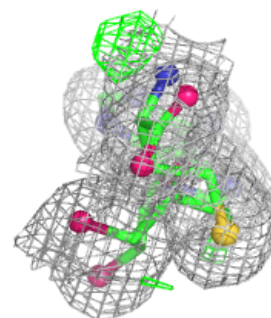
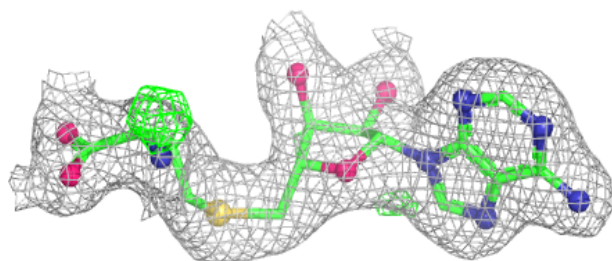
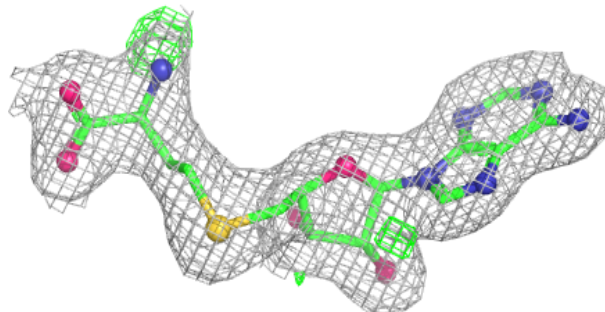


Electron density around SAH B 401:

$2mF_o-DF_c$ (at 0.7 rmsd) in gray
 mF_o-DF_c (at 3 rmsd) in purple (negative)
and green (positive)

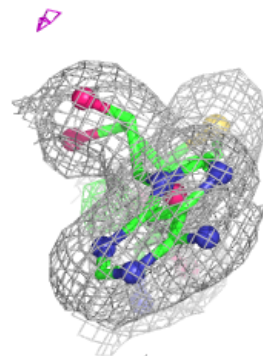
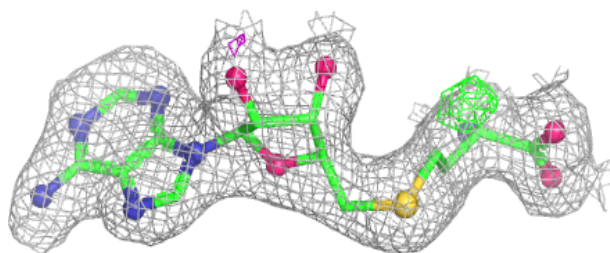
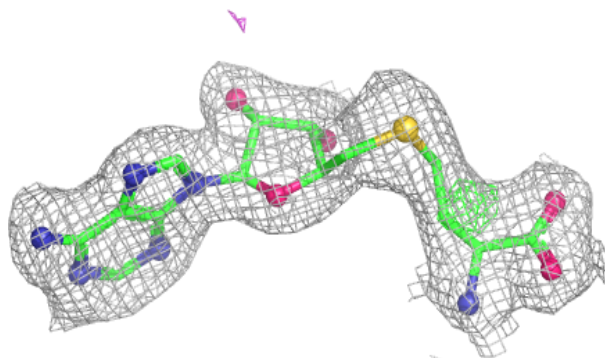
**Electron density around SAH A 401:**

$2mF_o-DF_c$ (at 0.7 rmsd) in gray
 mF_o-DF_c (at 3 rmsd) in purple (negative)
and green (positive)



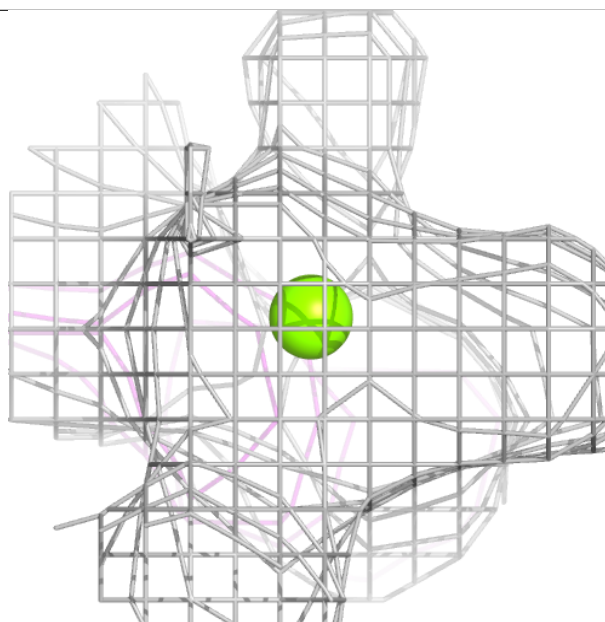
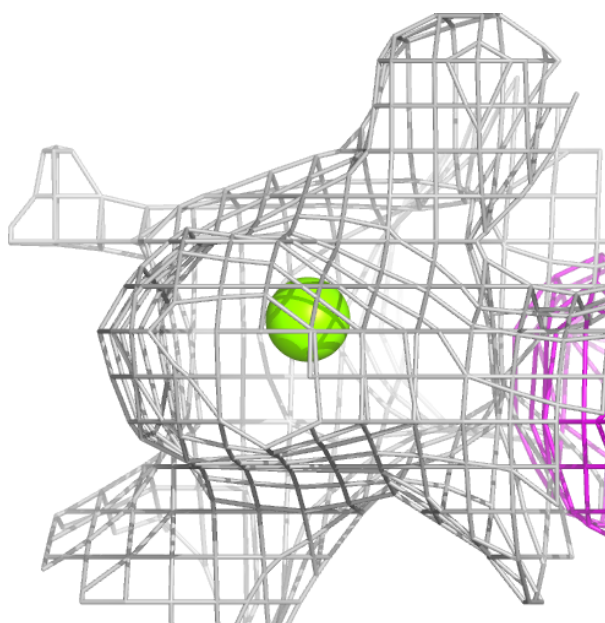
Electron density around SAH D 401:

$2mF_o-DF_c$ (at 0.7 rmsd) in gray
 mF_o-DF_c (at 3 rmsd) in purple (negative)
and green (positive)



Electron density around MG A 403:

$2mF_o-DF_c$ (at 0.7 rmsd) in gray
 mF_o-DF_c (at 3 rmsd) in purple (negative)
and green (positive)



6.5 Other polymers ⓘ

There are no such residues in this entry.