



Full wwPDB EM Validation Report ⓘ

May 7, 2026 – 01:32 pm BST

PDB ID : 9QLV / pdb_00009qlv
EMDB ID : EMD-53235
Title : Cryo-EM structure of Arabidopsis TIR-NLR WRR4A tetramer in complex with effector CCG40
Authors : Zhao, H.; Lukyanova, N.; Selvaraj, M.; Jones, J.
Deposited on : 2025-03-21
Resolution : 3.50 Å(reported)
Based on initial model : .

This is a Full wwPDB EM Validation Report for a publicly released PDB entry.

We welcome your comments at validation@mail.wwpdb.org

A user guide is available at

<https://www.wwpdb.org/validation/2017/EMValidationReportHelp>
with specific help available everywhere you see the ⓘ symbol.

The types of validation reports are described at

<http://www.wwpdb.org/validation/2017/FAQs#types>.

The following versions of software and data (see [references ⓘ](#)) were used in the production of this report:

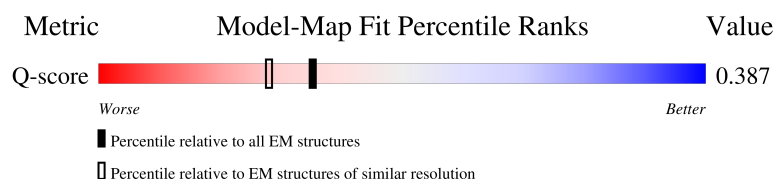
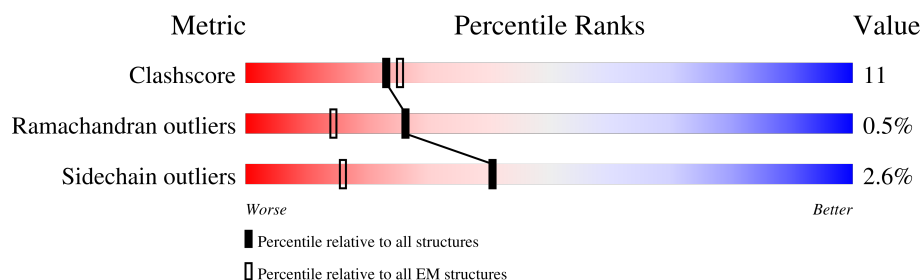
EMDB validation analysis : 0.0.1.dev132
Mogul : 1.8.4, CSD as541be (2020)
MolProbity : 4-5-2 with Phenix2.0
Buster-report : wwPDB partial adaption of 1.1.7 (2018)
Percentile statistics : 20250101.v01 (using entries in the PDB archive January 1st 2025)
EM percentile statistics : 202505.v01 (Using data in the EMDB archive up until May 2025)
MapQ : 1.9.13
Ideal geometry (proteins) : Engh & Huber (2001)
Ideal geometry (DNA, RNA) : Parkinson et al. (1996)
Validation Pipeline (wwPDB-VP) : 2.49

1 Overall quality at a glance

The following experimental techniques were used to determine the structure:
ELECTRON MICROSCOPY

The reported resolution of this entry is 3.50 Å.

Percentile scores (ranging between 0-100) for global validation metrics of the entry are shown in the following graphic. The table shows the number of entries on which the scores are based.



Metric	Whole archive (#Entries)	EM structures (#Entries)	Similar EM resolution (#Entries, resolution range(Å))
Clashscore	229148	23984	-
Ramachandran outliers	224038	23583	-
Sidechain outliers	223484	23102	-
Q-score	-	25397	13950 (3.00 - 4.00)

The table below summarises the geometric issues observed across the polymeric chains and their fit to the map. The red, orange, yellow and green segments of the bar indicate the fraction of residues that contain outliers for ≥ 3 , 2, 1 and 0 types of geometric quality criteria respectively. A grey segment represents the fraction of residues that are not modelled. The numeric value for each fraction is indicated below the corresponding segment, with a dot representing fractions $\leq 5\%$. The upper red bar (where present) indicates the fraction of residues that have poor fit to the EM map (all-atom inclusion $< 40\%$). The numeric value is given above the bar.

Mol	Chain	Length	Quality of chain
1	P	216	
1	Q	216	
1	R	216	
1	S	216	

Continued on next page...

Continued from previous page...

Mol	Chain	Length	Quality of chain
2	A	1007	<div><div><div></div><div></div><div></div></div><div>57%21%21%</div></div>
2	B	1007	<div><div><div></div><div></div><div></div></div><div>6%60%18%21%</div></div>
2	C	1007	<div><div><div></div><div></div><div></div></div><div>5%60%18%21%</div></div>
2	D	1007	<div><div><div></div><div></div><div></div></div><div>6%59%19%21%</div></div>

2 Entry composition

There are 3 unique types of molecules in this entry. The entry contains 27748 atoms, of which 0 are hydrogens and 0 are deuteriums.

In the tables below, the AltConf column contains the number of residues with at least one atom in alternate conformation and the Trace column contains the number of residues modelled with at most 2 atoms.

- Molecule 1 is a protein called CCG40.

Mol	Chain	Residues	Atoms					AltConf	Trace
1	P	77	Total	C	N	O	S	0	0
			583	362	101	115	5		
1	Q	77	Total	C	N	O	S	0	0
			583	362	101	115	5		
1	R	77	Total	C	N	O	S	0	0
			583	362	101	115	5		
1	S	77	Total	C	N	O	S	0	0
			583	362	101	115	5		

- Molecule 2 is a protein called Disease resistance protein ADR2.

Mol	Chain	Residues	Atoms					AltConf	Trace
2	A	799	Total	C	N	O	S	0	0
			6327	4032	1075	1181	39		
2	B	799	Total	C	N	O	S	0	0
			6327	4032	1075	1181	39		
2	C	799	Total	C	N	O	S	0	0
			6327	4032	1075	1181	39		
2	D	799	Total	C	N	O	S	0	0
			6327	4032	1075	1181	39		

- Molecule 3 is ADENOSINE-5'-DIPHOSPHATE (CCD ID: ADP) (formula: C₁₀H₁₅N₅O₁₀P₂) (labeled as "Ligand of Interest" by depositor).

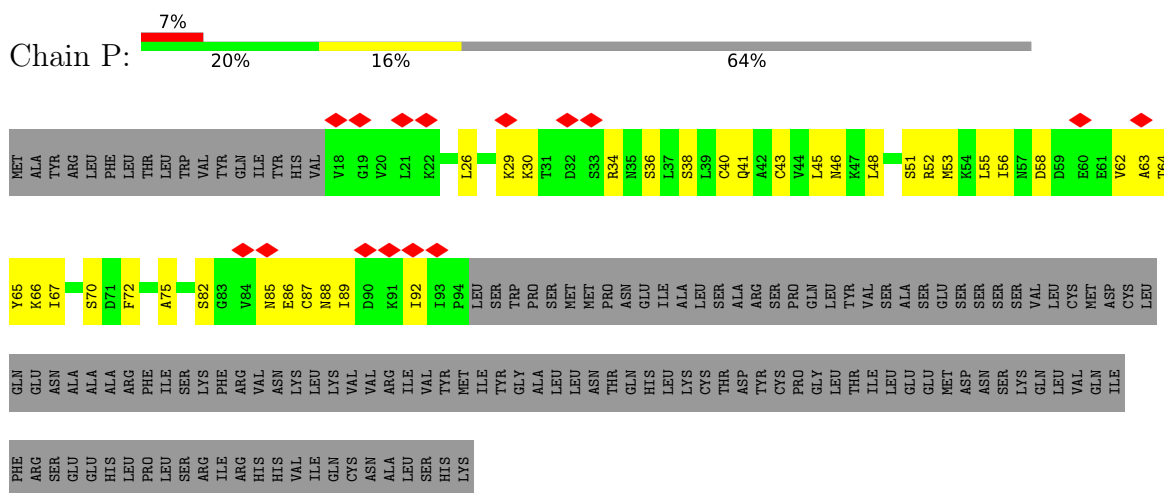


Mol	Chain	Residues	Atoms					AltConf
3	A	1	Total 27	C 10	N 5	O 10	P 2	0
3	B	1	Total 27	C 10	N 5	O 10	P 2	0
3	C	1	Total 27	C 10	N 5	O 10	P 2	0
3	D	1	Total 27	C 10	N 5	O 10	P 2	0

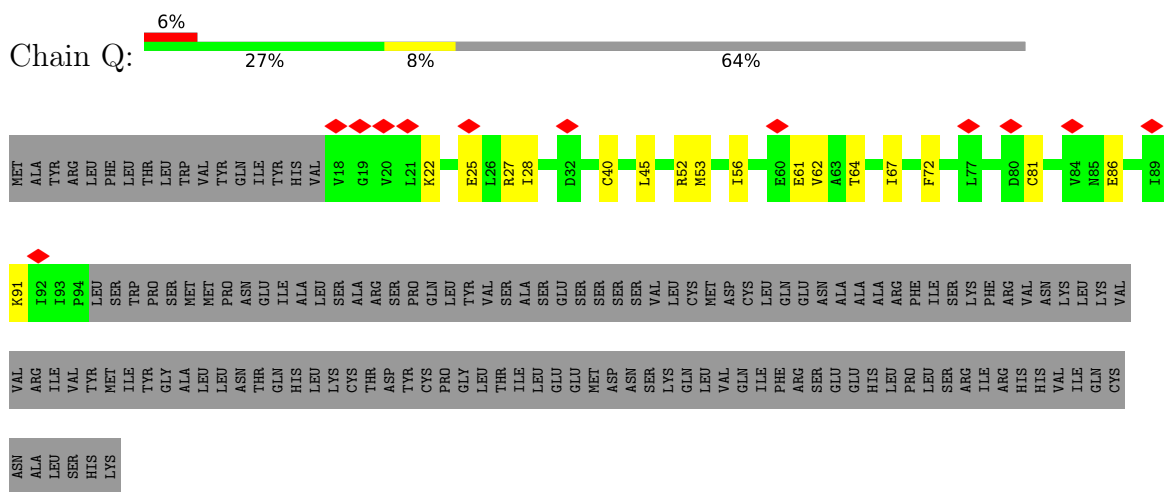
3 Residue-property plots

These plots are drawn for all protein, RNA, DNA and oligosaccharide chains in the entry. The first graphic for a chain summarises the proportions of the various outlier classes displayed in the second graphic. The second graphic shows the sequence view annotated by issues in geometry and atom inclusion in map density. Residues are color-coded according to the number of geometric quality criteria for which they contain at least one outlier: green = 0, yellow = 1, orange = 2 and red = 3 or more. A red diamond above a residue indicates a poor fit to the EM map for this residue (all-atom inclusion < 40%). Stretches of 2 or more consecutive residues without any outlier are shown as a green connector. Residues present in the sample, but not in the model, are shown in grey.

• Molecule 1: CCG40



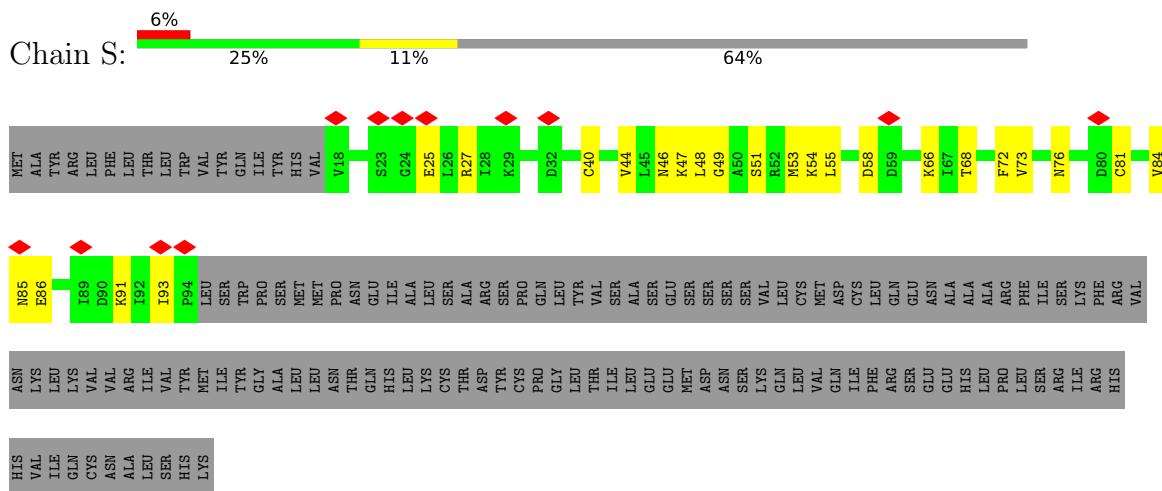
• Molecule 1: CCG40



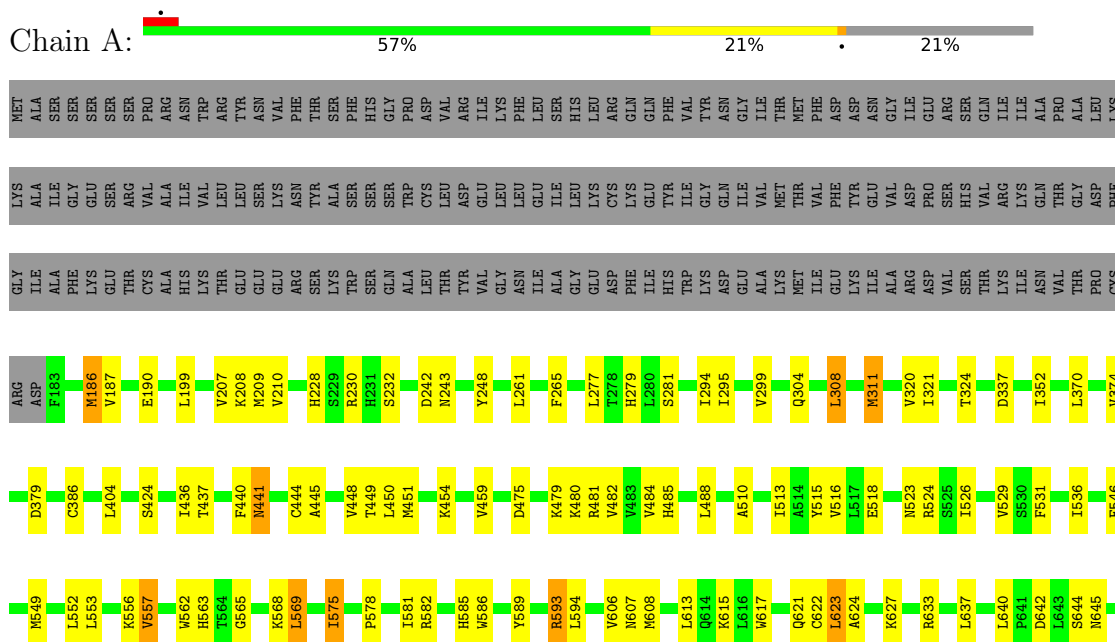
• Molecule 1: CCG40

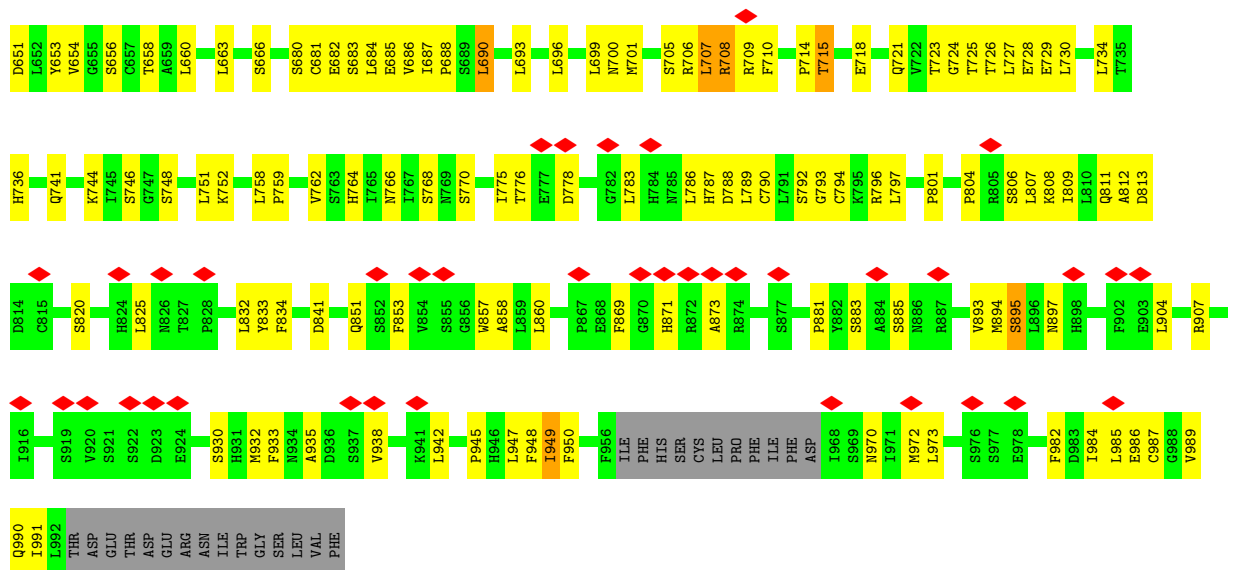


- Molecule 1: CCG40

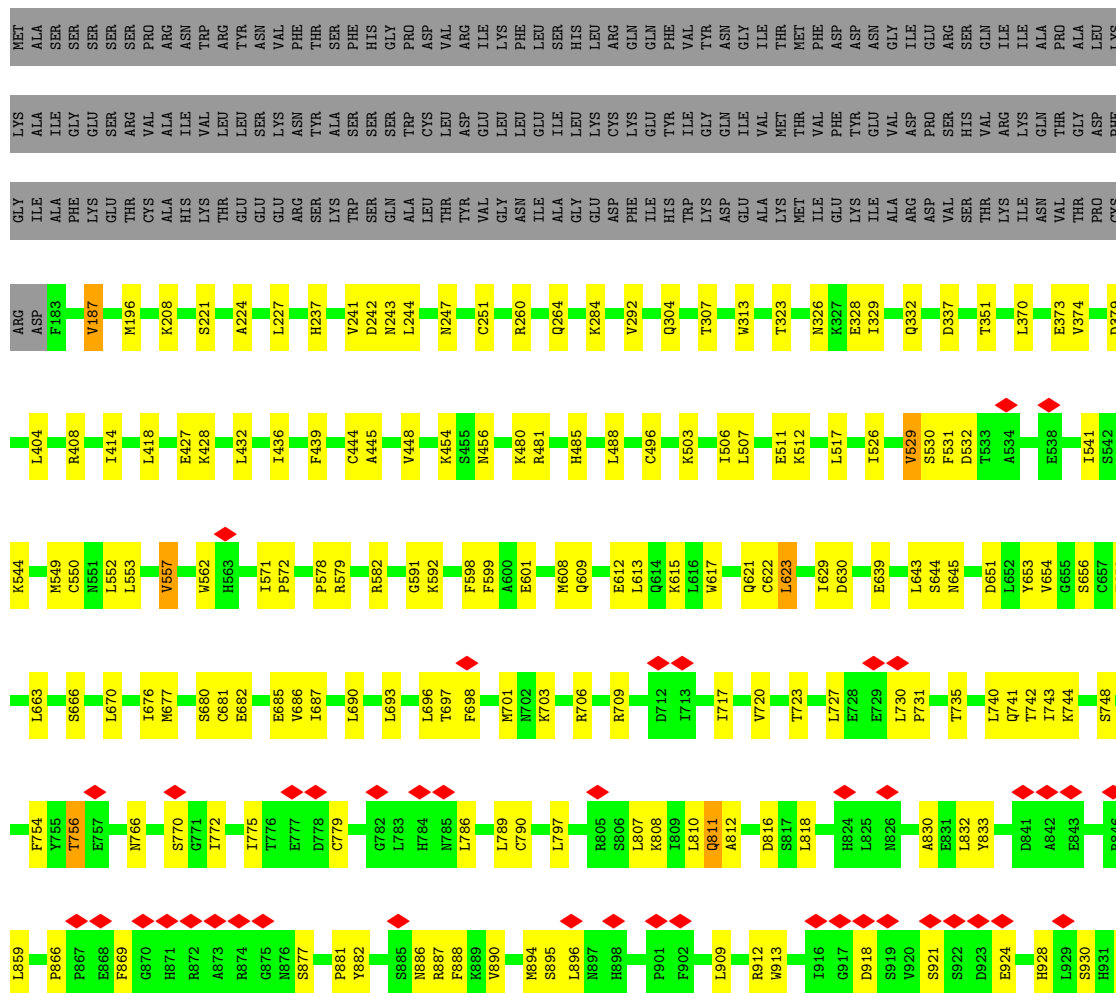


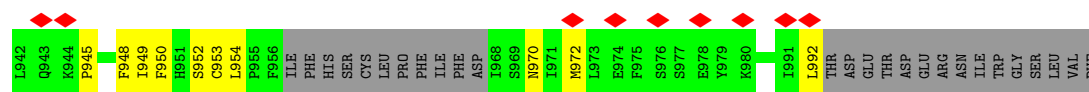
- Molecule 2: Disease resistance protein ADR2



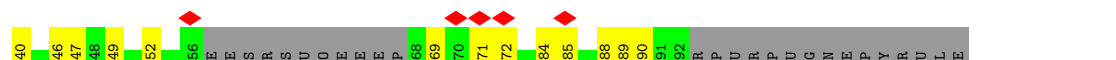
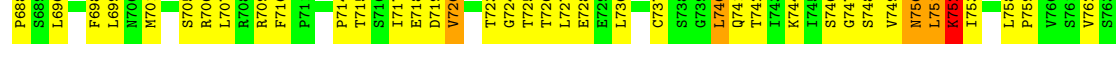
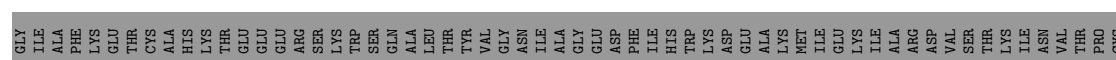
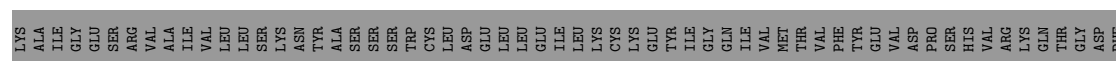
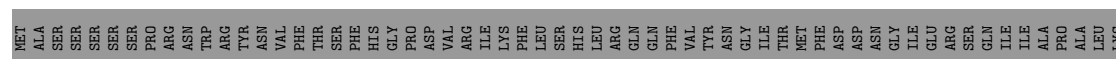


• Molecule 2: Disease resistance protein ADR2

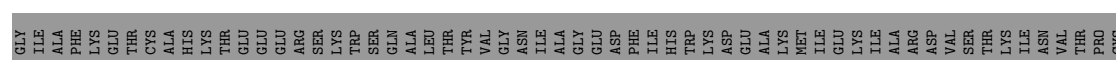
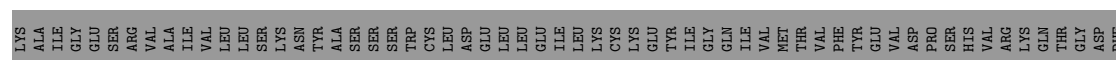
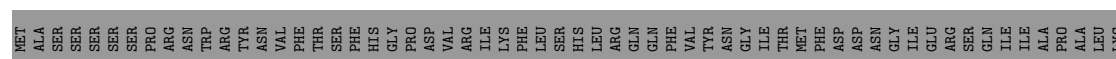


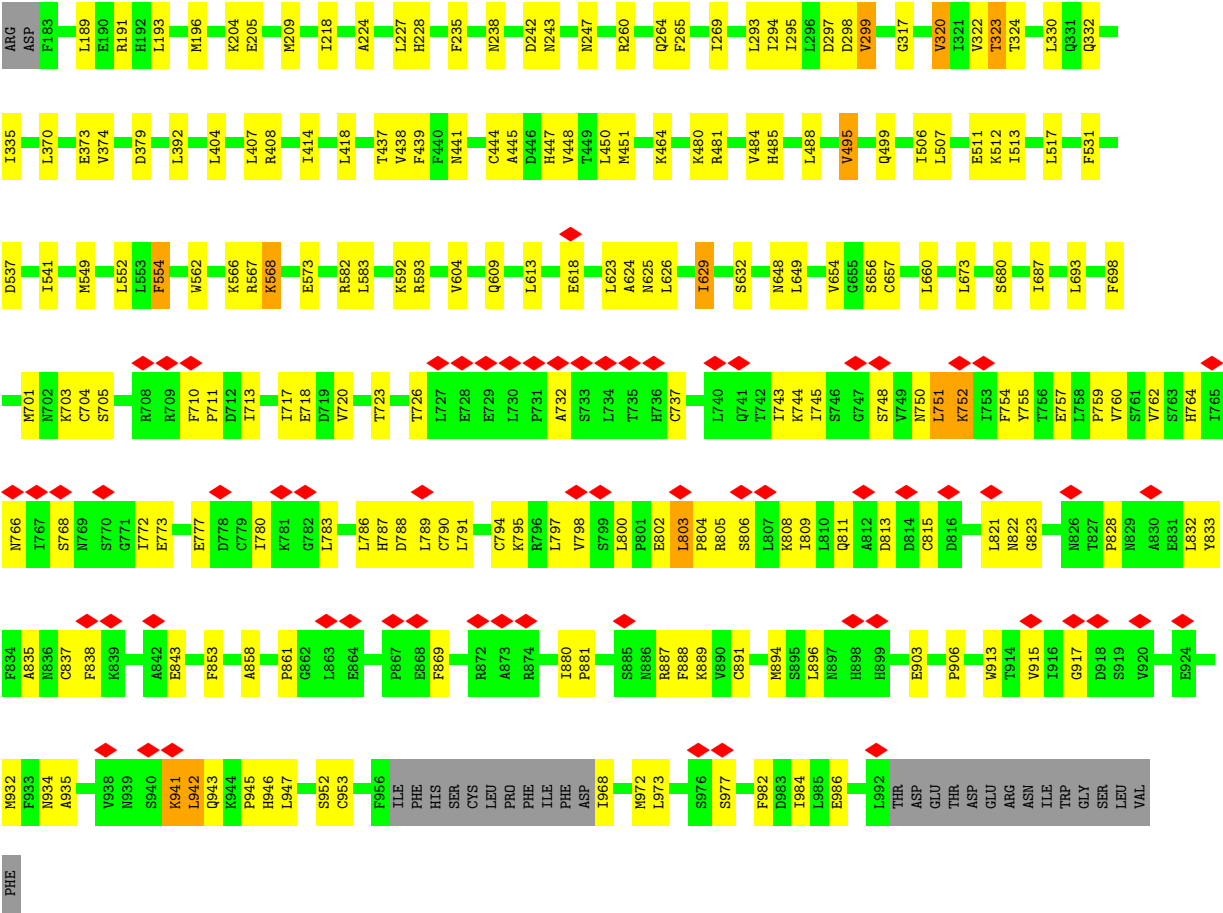


• Molecule 2: Disease resistance protein ADR2



• Molecule 2: Disease resistance protein ADR2





4 Experimental information

Property	Value	Source
EM reconstruction method	SINGLE PARTICLE	Depositor
Imposed symmetry	POINT, C4	Depositor
Number of particles used	117347	Depositor
Resolution determination method	FSC 0.143 CUT-OFF	Depositor
CTF correction method	PHASE FLIPPING AND AMPLITUDE CORRECTION; Relion	Depositor
Microscope	TFS KRIOS	Depositor
Voltage (kV)	300	Depositor
Electron dose ($e^-/\text{\AA}^2$)	50	Depositor
Minimum defocus (nm)	1600	Depositor
Maximum defocus (nm)	2700	Depositor
Magnification	105000	Depositor
Image detector	GATAN K3 BIOQUANTUM (6k x 4k)	Depositor
Maximum map value	0.116	Depositor
Minimum map value	-0.068	Depositor
Average map value	0.000	Depositor
Map value standard deviation	0.003	Depositor
Recommended contour level	0.009	Depositor
Map size (Å)	331.2, 331.2, 331.2	wwPDB
Map dimensions	400, 400, 400	wwPDB
Map angles (°)	90.0, 90.0, 90.0	wwPDB
Pixel spacing (Å)	0.828, 0.828, 0.828	Depositor

5 Model quality [i](#)

5.1 Standard geometry [i](#)

Bond lengths and bond angles in the following residue types are not validated in this section: ADP

The Z score for a bond length (or angle) is the number of standard deviations the observed value is removed from the expected value. A bond length (or angle) with $|Z| > 5$ is considered an outlier worth inspection. RMSZ is the root-mean-square of all Z scores of the bond lengths (or angles).

Mol	Chain	Bond lengths		Bond angles	
		RMSZ	# Z >5	RMSZ	# Z >5
1	P	0.16	0/586	0.44	0/786
1	Q	0.12	0/586	0.39	0/786
1	R	0.10	0/586	0.39	0/786
1	S	0.16	0/586	0.43	0/786
2	A	0.18	0/6454	0.46	1/8735 (0.0%)
2	B	0.17	0/6454	0.45	1/8735 (0.0%)
2	C	0.20	0/6454	0.48	1/8735 (0.0%)
2	D	0.17	0/6454	0.47	2/8735 (0.0%)
All	All	0.18	0/28160	0.46	5/38084 (0.0%)

There are no bond length outliers.

All (5) bond angle outliers are listed below:

Mol	Chain	Res	Type	Atoms	Z	Observed(°)	Ideal(°)
2	C	752	LYS	N-CA-C	-6.73	106.28	114.75
2	D	798	VAL	N-CA-C	-6.38	106.58	112.96
2	B	654	VAL	N-CA-C	-5.88	107.55	113.20
2	D	705	SER	CB-CA-C	-5.56	110.14	116.54
2	A	186	MET	CB-CA-C	-5.17	110.59	116.54

There are no chirality outliers.

There are no planarity outliers.

5.2 Too-close contacts [i](#)

In the following table, the Non-H and H(model) columns list the number of non-hydrogen atoms and hydrogen atoms in the chain respectively. The H(added) column lists the number of hydrogen atoms added and optimized by MolProbity. The Clashes column lists the number of clashes within the asymmetric unit, whereas Symm-Clashes lists symmetry-related clashes.

Mol	Chain	Non-H	H(model)	H(added)	Clashes	Symm-Clashes
1	P	583	0	601	24	0
1	Q	583	0	601	13	0
1	R	583	0	601	24	0
1	S	583	0	601	19	0
2	A	6327	0	6376	159	0
2	B	6327	0	6376	116	0
2	C	6327	0	6376	150	0
2	D	6327	0	6376	141	0
3	A	27	0	12	2	0
3	B	27	0	12	1	0
3	C	27	0	12	0	0
3	D	27	0	12	0	0
All	All	27748	0	27956	620	0

The all-atom clashscore is defined as the number of clashes found per 1000 atoms (including hydrogen atoms). The all-atom clashscore for this structure is 11.

All (620) close contacts within the same asymmetric unit are listed below, sorted by their clash magnitude.

Atom-1	Atom-2	Interatomic distance (Å)	Clash overlap (Å)
1:P:34:ARG:NH1	1:P:34:ARG:O	2.07	0.86
2:B:507:LEU:HD11	2:B:526:ILE:HG12	1.61	0.81
2:A:621:GLN:C	2:A:623:LEU:H	1.88	0.80
2:C:717:ILE:HG22	2:C:740:LEU:HA	1.64	0.80
2:C:209:MET:HG2	2:C:320:VAL:HB	1.65	0.79
2:D:837:CYS:SG	2:D:838:PHE:N	2.58	0.76
2:A:437:THR:HG22	2:A:484:VAL:HG11	1.67	0.76
1:R:80:ASP:OD2	1:R:88:ASN:ND2	2.20	0.73
2:A:907:ARG:HG2	2:A:930:SER:HB2	1.70	0.73
2:B:373:GLU:HG2	2:B:404:LEU:HD21	1.70	0.73
2:C:931:HIS:O	2:C:931:HIS:ND1	2.21	0.73
2:A:444:CYS:HA	2:A:481:ARG:HA	1.70	0.73
2:A:536:ILE:O	2:A:568:LYS:NZ	2.22	0.72
2:B:621:GLN:HB2	2:B:623:LEU:HD23	1.71	0.72
2:D:624:ALA:O	2:D:648:ASN:ND2	2.23	0.72
2:C:737:CYS:HB2	2:C:740:LEU:HD22	1.72	0.72
2:C:752:LYS:H	2:C:752:LYS:HZ2	1.38	0.71
2:D:437:THR:HG22	2:D:484:VAL:HG11	1.73	0.71
1:P:52:ARG:NH2	2:A:790:CYS:SG	2.63	0.71
2:B:888:PHE:H	2:B:992:LEU:HD11	1.55	0.71
2:A:693:LEU:HD23	2:A:696:LEU:HB2	1.73	0.70
2:A:809:ILE:HD11	2:A:811:GLN:HB3	1.73	0.70

Continued on next page...

Continued from previous page...

Atom-1	Atom-2	Interatomic distance (Å)	Clash overlap (Å)
2:A:897:ASN:ND2	2:A:942:LEU:O	2.25	0.69
2:A:441:ASN:C	2:A:441:ASN:HD22	2.00	0.69
1:S:72:PHE:O	1:S:76:ASN:ND2	2.26	0.69
2:C:196:MET:HG2	2:C:227:LEU:HD11	1.75	0.69
2:B:703:LYS:H	2:B:723:THR:HB	1.57	0.69
2:C:932:MET:HE1	2:C:940:SER:H	1.59	0.68
2:D:517:LEU:HD22	2:D:531:PHE:HE2	1.58	0.68
2:D:786:LEU:HD22	2:D:806:SER:HB3	1.75	0.68
2:B:772:ILE:HG13	2:B:797:LEU:HD12	1.76	0.68
2:C:786:LEU:HB2	2:C:789:LEU:HD11	1.75	0.68
2:D:768:SER:HA	2:D:791:LEU:HA	1.76	0.68
2:B:427:GLU:OE2	2:B:427:GLU:N	2.27	0.67
2:C:307:THR:HG23	2:C:308:LEU:HD22	1.74	0.67
2:A:775:ILE:HB	2:A:801:PRO:HG2	1.75	0.67
2:C:705:SER:HA	2:C:725:THR:HA	1.76	0.66
2:D:444:CYS:HA	2:D:481:ARG:HA	1.78	0.66
2:B:887:ARG:HG2	2:B:953:CYS:HB3	1.76	0.66
2:C:579:ARG:NH2	2:C:601:GLU:OE2	2.27	0.66
1:S:54:LYS:HB2	1:S:66:LYS:HB2	1.77	0.66
2:D:811:GLN:HA	2:D:835:ALA:HB2	1.77	0.66
2:C:783:LEU:HB2	2:C:786:LEU:HD23	1.77	0.66
2:C:881:PRO:HA	2:C:969:SER:HA	1.78	0.65
2:D:903:GLU:HB3	2:D:941:LYS:HE2	1.77	0.65
2:D:209:MET:HG3	2:D:320:VAL:HG13	1.78	0.65
2:D:783:LEU:HG	2:D:805:ARG:HE	1.61	0.65
2:B:877:SER:OG	2:B:972:MET:SD	2.55	0.65
2:C:709:ARG:NH2	2:C:726:THR:O	2.30	0.65
2:D:789:LEU:HD22	2:D:808:LYS:H	1.62	0.65
2:C:869:PHE:HA	2:C:990:GLN:HB2	1.78	0.64
2:D:450:LEU:O	2:D:582:ARG:NH2	2.31	0.64
2:C:727:LEU:HD22	2:C:751:LEU:HD22	1.80	0.64
2:C:549:MET:HG2	2:C:552:LEU:HD13	1.80	0.64
2:D:913:TRP:HZ3	2:D:915:VAL:HG23	1.63	0.63
2:D:657:CYS:HB3	2:D:660:LEU:HD13	1.80	0.63
2:B:690:LEU:HB2	2:B:693:LEU:HD23	1.80	0.63
2:C:435:TYR:OH	2:C:505:GLN:NE2	2.31	0.63
2:B:811:GLN:HA	2:B:833:TYR:H	1.64	0.63
2:C:764:HIS:HE1	2:C:766:ASN:HB2	1.63	0.63
2:A:621:GLN:C	2:A:623:LEU:N	2.55	0.63
2:D:977:SER:OG	2:D:982:PHE:N	2.30	0.63
2:C:845:ARG:NH2	2:C:861:PRO:O	2.32	0.62

Continued on next page...

Continued from previous page...

Atom-1	Atom-2	Interatomic distance (Å)	Clash overlap (Å)
1:S:46:ASN:OD1	1:S:47:LYS:N	2.32	0.62
2:A:569:LEU:HG	2:A:586:TRP:HE1	1.64	0.62
2:C:777:GLU:HA	2:C:801:PRO:HB3	1.82	0.62
2:D:573:GLU:N	2:D:573:GLU:OE1	2.32	0.62
2:A:786:LEU:HD22	2:A:804:PRO:HG2	1.82	0.61
1:S:48:LEU:HD21	1:S:81:CYS:H	1.65	0.61
2:C:752:LYS:HB2	2:C:773:GLU:HB2	1.81	0.61
2:C:450:LEU:O	2:C:582:ARG:NH2	2.34	0.61
2:D:299:VAL:HG22	2:D:324:THR:HB	1.83	0.61
2:A:832:LEU:HD23	2:A:832:LEU:H	1.65	0.61
2:A:687:ILE:HD12	2:A:707:LEU:HD22	1.83	0.61
2:C:758:LEU:HB3	2:C:783:LEU:HD21	1.83	0.61
2:B:754:PHE:CD1	2:B:775:ILE:HG12	2.36	0.60
2:D:828:PRO:HA	2:D:853:PHE:HA	1.82	0.60
2:A:621:GLN:O	2:A:623:LEU:N	2.34	0.60
2:C:818:LEU:O	2:C:819:GLU:C	2.45	0.60
2:D:592:LYS:HG2	2:D:613:LEU:HA	1.84	0.60
2:A:546:PHE:HD2	2:A:575:ILE:HD11	1.67	0.60
2:C:535:GLU:HG2	2:C:536:ILE:HG12	1.82	0.60
2:D:787:HIS:O	2:D:808:LYS:NZ	2.34	0.60
2:A:811:GLN:HG3	2:A:932:MET:HG2	1.83	0.59
2:A:682:GLU:HG3	2:A:706:ARG:CZ	2.33	0.59
2:C:517:LEU:HD12	2:C:531:PHE:HE1	1.66	0.59
2:A:686:VAL:HA	2:A:708:ARG:CZ	2.33	0.59
1:R:54:LYS:NZ	1:R:55:LEU:O	2.33	0.59
2:A:894:MET:HG2	2:A:948:PHE:HD2	1.67	0.59
2:B:553:LEU:HD22	2:B:582:ARG:HH12	1.67	0.59
2:C:786:LEU:HD21	2:C:804:PRO:HD2	1.85	0.59
2:C:891:CYS:N	2:C:988:GLY:O	2.31	0.59
1:P:26:LEU:HD12	1:P:92:ILE:HD11	1.85	0.58
1:S:55:LEU:HD21	2:D:906:PRO:HG3	1.86	0.58
2:A:644:SER:HB3	2:A:666:SER:HB2	1.86	0.58
2:D:517:LEU:HD23	2:D:541:ILE:HD12	1.86	0.58
1:S:47:LYS:NZ	1:S:86:GLU:OE1	2.28	0.58
1:Q:61:GLU:HG2	1:Q:62:VAL:HG23	1.85	0.58
2:B:485:HIS:HB3	2:B:488:LEU:HD23	1.85	0.58
2:B:621:GLN:O	2:B:645:ASN:ND2	2.31	0.58
2:C:762:VAL:HG11	2:C:783:LEU:HD13	1.85	0.58
2:C:880:ILE:HG21	2:C:989:VAL:HG21	1.85	0.58
2:C:938:VAL:HG12	2:C:939:ASN:H	1.67	0.58
2:D:917:GLY:HA3	2:D:968:ILE:HD11	1.86	0.58

Continued on next page...

Continued from previous page...

Atom-1	Atom-2	Interatomic distance (Å)	Clash overlap (Å)
2:A:764:HIS:CE1	2:A:766:ASN:HB2	2.38	0.58
2:C:934:ASN:HB3	2:C:937:SER:HB3	1.85	0.58
2:B:444:CYS:HA	2:B:481:ARG:HA	1.85	0.57
2:A:764:HIS:HE1	2:A:766:ASN:HB2	1.70	0.57
2:C:984:ILE:HG23	2:C:985:LEU:H	1.69	0.57
2:C:759:PRO:HG2	2:C:762:VAL:HB	1.87	0.57
2:B:244:LEU:HD22	2:C:260:ARG:HH12	1.69	0.57
2:A:853:PHE:HE2	2:A:949:ILE:HD11	1.69	0.56
2:D:894:MET:HE2	2:D:894:MET:HA	1.87	0.56
2:A:450:LEU:O	2:A:582:ARG:NH1	2.33	0.56
2:A:792:SER:HA	2:A:813:ASP:HA	1.86	0.56
2:B:529:VAL:HG12	2:B:552:LEU:HD11	1.87	0.56
2:C:836:ASN:HB3	2:C:838:PHE:CZ	2.40	0.56
2:D:623:LEU:HD12	2:D:626:LEU:HB2	1.87	0.56
2:C:253:GLY:HA2	2:C:258:LYS:HE3	1.88	0.56
2:C:507:LEU:HD11	2:C:526:ILE:HD12	1.87	0.56
2:D:438:VAL:HG21	2:D:506:ILE:HD13	1.88	0.56
2:B:328:GLU:O	2:B:332:GLN:HG2	2.06	0.56
2:B:601:GLU:HG3	2:B:622:CYS:HB3	1.88	0.56
2:B:237:HIS:HB2	2:B:292:VAL:HG12	1.87	0.56
2:C:644:SER:HB3	2:C:666:SER:HB2	1.88	0.56
2:C:737:CYS:HB2	2:C:740:LEU:HB3	1.87	0.56
2:D:752:LYS:HA	2:D:772:ILE:HD13	1.87	0.56
2:A:440:PHE:CE1	2:A:451:MET:HE3	2.41	0.55
2:A:812:ALA:HB3	2:A:932:MET:SD	2.46	0.55
2:B:881:PRO:HA	2:B:970:ASN:H	1.72	0.55
2:B:445:ALA:N	2:B:480:LYS:O	2.35	0.55
2:A:811:GLN:HA	2:A:833:TYR:HB2	1.87	0.55
2:D:984:ILE:HG22	2:D:986:GLU:H	1.71	0.55
2:C:445:ALA:N	2:C:480:LYS:O	2.39	0.55
2:D:804:PRO:HD2	2:D:823:GLY:HA3	1.89	0.55
2:A:762:VAL:HB	2:A:786:LEU:HD12	1.88	0.55
2:C:752:LYS:HZ2	2:C:752:LYS:N	2.04	0.55
2:A:752:LYS:NZ	2:A:796:ARG:O	2.25	0.55
2:D:932:MET:SD	2:D:932:MET:N	2.79	0.55
2:C:448:VAL:HG11	2:C:482:VAL:HG21	1.88	0.54
2:A:656:SER:HA	2:A:680:SER:HB3	1.89	0.54
2:A:812:ALA:N	2:A:833:TYR:O	2.33	0.54
2:A:708:ARG:HG2	2:A:709:ARG:N	2.21	0.54
2:A:736:HIS:HA	2:A:759:PRO:HB3	1.89	0.54
2:C:752:LYS:HA	2:C:773:GLU:H	1.72	0.54

Continued on next page...

Continued from previous page...

Atom-1	Atom-2	Interatomic distance (Å)	Clash overlap (Å)
2:D:880:ILE:HD12	2:D:881:PRO:HD2	1.90	0.54
2:A:441:ASN:ND2	2:A:441:ASN:O	2.38	0.54
2:A:663:LEU:HD11	2:A:688:PRO:HB3	1.89	0.54
2:D:726:THR:HG23	2:D:750:ASN:HB2	1.90	0.54
1:R:51:SER:HB3	2:C:742:THR:HG23	1.90	0.53
1:P:53:MET:SD	1:P:67:ILE:HG22	2.48	0.53
2:B:609:GLN:NE2	2:B:630:ASP:OD2	2.41	0.53
2:D:832:LEU:HB3	2:D:858:ALA:HB1	1.89	0.53
2:C:972:MET:SD	2:C:972:MET:N	2.81	0.53
2:A:688:PRO:HB2	2:A:690:LEU:HD22	1.90	0.53
2:A:776:THR:HG22	2:A:778:ASP:H	1.74	0.53
1:Q:45:LEU:HD13	2:B:934:ASN:HA	1.91	0.53
2:D:379:ASP:HB3	2:D:485:HIS:CE1	2.44	0.53
2:A:187:VAL:HG11	2:A:352:ILE:HG13	1.91	0.53
2:D:656:SER:HA	2:D:680:SER:HB3	1.91	0.53
2:A:606:VAL:HG21	2:A:617:TRP:HZ3	1.73	0.53
2:B:373:GLU:OE1	2:B:408:ARG:NH1	2.39	0.53
2:B:756:THR:HG22	2:B:779:CYS:HB2	1.90	0.53
2:C:571:ILE:HG23	2:C:575:ILE:HD12	1.91	0.52
1:S:40:CYS:O	1:S:44:VAL:HG12	2.09	0.52
2:A:794:CYS:HB3	2:A:797:LEU:HB3	1.90	0.52
2:B:807:LEU:HD21	2:B:810:LEU:HD12	1.91	0.52
2:C:662:GLU:HB3	2:C:686:VAL:CG2	2.39	0.52
2:C:834:PHE:HD2	2:C:860:LEU:HD23	1.74	0.52
2:D:374:VAL:HG22	2:D:404:LEU:HD21	1.91	0.52
2:B:950:PHE:HE1	2:B:952:SER:HB3	1.74	0.52
2:D:760:VAL:C	2:D:762:VAL:H	2.18	0.52
1:P:29:LYS:HD3	1:P:62:VAL:HG21	1.92	0.52
2:A:531:PHE:HB3	2:A:557:VAL:HB	1.91	0.52
2:A:621:GLN:O	2:A:645:ASN:ND2	2.28	0.52
2:A:708:ARG:NH1	2:A:709:ARG:H	2.08	0.52
2:B:541:ILE:HB	2:B:572:PRO:HD3	1.92	0.52
2:B:428:LYS:NZ	2:B:456:ASN:OD1	2.43	0.52
2:B:912:ARG:HA	2:B:924:GLU:HG2	1.90	0.52
2:A:248:TYR:O	2:A:304:GLN:NE2	2.42	0.52
2:A:806:SER:OG	2:A:808:LYS:NZ	2.43	0.52
1:Q:81:CYS:HB3	1:Q:86:GLU:HB3	1.91	0.52
2:C:557:VAL:HG22	2:C:586:TRP:HA	1.91	0.52
2:D:243:ASN:ND2	2:D:298:ASP:OD1	2.41	0.52
2:C:586:TRP:CG	2:C:589:TYR:HD1	2.28	0.52
2:D:748:SER:H	2:D:751:LEU:HD13	1.75	0.52

Continued on next page...

Continued from previous page...

Atom-1	Atom-2	Interatomic distance (Å)	Clash overlap (Å)
2:A:729:GLU:CD	2:A:751:LEU:HB3	2.35	0.51
2:B:284:LYS:HB2	2:B:313:TRP:CD1	2.45	0.51
1:Q:52:ARG:NH1	2:B:790:CYS:SG	2.77	0.51
1:R:23:SER:HA	1:R:68:THR:HA	1.91	0.51
2:B:913:TRP:CD1	2:B:921:SER:HG	2.27	0.51
2:C:698:PHE:HB2	2:C:719:ASP:HB3	1.92	0.51
2:C:730:LEU:HB3	2:C:753:ILE:HG23	1.91	0.51
1:P:56:ILE:HD11	1:P:66:LYS:HE2	1.93	0.51
1:R:31:THR:OG1	1:R:32:ASP:N	2.43	0.51
2:A:199:LEU:HD12	2:A:337:ASP:HB3	1.92	0.51
2:B:454:LYS:HD3	2:B:582:ARG:NE	2.25	0.51
2:B:808:LYS:HA	2:B:830:ALA:HA	1.92	0.51
2:D:703:LYS:H	2:D:723:THR:HB	1.76	0.51
1:P:51:SER:HB2	2:A:764:HIS:CD2	2.46	0.51
2:A:871:HIS:HB3	2:A:989:VAL:HB	1.92	0.51
2:B:511:GLU:HG3	2:B:512:LYS:N	2.25	0.51
2:D:720:VAL:N	2:D:744:LYS:O	2.39	0.51
2:A:788:ASP:HA	2:A:809:ILE:HG23	1.93	0.51
2:B:571:ILE:HG13	2:B:572:PRO:HD2	1.93	0.51
2:B:751:LEU:HD23	2:B:770:SER:HB2	1.93	0.51
2:C:728:GLU:HB3	2:C:750:ASN:HD22	1.76	0.51
2:D:764:HIS:CD2	2:D:788:ASP:HB3	2.45	0.51
1:Q:25:GLU:HB3	1:Q:91:LYS:HE2	1.92	0.51
1:R:52:ARG:HB3	1:R:68:THR:HB	1.92	0.51
2:B:797:LEU:HD21	2:B:818:LEU:HD13	1.93	0.51
2:A:894:MET:HE3	2:A:982:PHE:HB3	1.92	0.51
2:C:554:PHE:HA	2:C:583:LEU:HB3	1.93	0.51
1:S:25:GLU:HB2	1:S:93:ILE:HB	1.93	0.51
2:D:370:LEU:O	2:D:374:VAL:HG23	2.11	0.51
2:C:429:ASP:OD2	2:C:465:ASN:ND2	2.39	0.50
2:A:985:LEU:O	2:A:986:GLU:HG2	2.11	0.50
2:B:552:LEU:HB3	2:B:578:PRO:HG3	1.93	0.50
2:A:265:PHE:HZ	2:A:294:ILE:HD12	1.75	0.50
2:A:374:VAL:HG22	2:A:404:LEU:HD21	1.93	0.50
2:C:399:ASP:OD1	2:D:464:LYS:NZ	2.39	0.50
2:C:891:CYS:O	2:C:988:GLY:N	2.36	0.50
2:A:786:LEU:HD21	2:A:789:LEU:HG	1.94	0.50
2:B:531:PHE:HD1	2:B:532:ASP:N	2.09	0.50
2:C:834:PHE:N	2:C:859:LEU:O	2.40	0.50
2:D:718:GLU:HA	2:D:743:ILE:HA	1.94	0.50
2:A:228:HIS:O	2:A:232:SER:HB2	2.12	0.50

Continued on next page...

Continued from previous page...

Atom-1	Atom-2	Interatomic distance (Å)	Clash overlap (Å)
2:B:717:ILE:HG21	2:B:720:VAL:HG23	1.93	0.50
2:D:392:LEU:HD21	2:D:407:LEU:HD11	1.94	0.50
2:A:633:ARG:HA	2:A:656:SER:HB2	1.94	0.50
2:B:579:ARG:HB3	2:B:599:PHE:CZ	2.46	0.50
1:P:41:GLN:O	1:P:45:LEU:HB2	2.12	0.50
1:R:44:VAL:HA	1:R:48:LEU:HD23	1.94	0.50
2:C:705:SER:H	2:C:725:THR:HG22	1.76	0.49
2:A:724:GLY:N	2:A:746:SER:O	2.35	0.49
2:D:228:HIS:HB2	2:D:295:ILE:HD12	1.94	0.49
2:D:755:TYR:CZ	2:D:757:GLU:HB3	2.47	0.49
2:C:752:LYS:NZ	2:C:753:ILE:HG22	2.27	0.49
2:D:783:LEU:O	2:D:805:ARG:NH2	2.45	0.49
1:P:70:SER:HB2	1:P:72:PHE:HD1	1.77	0.49
2:A:379:ASP:HB3	2:A:485:HIS:CE1	2.48	0.49
2:D:265:PHE:HZ	2:D:294:ILE:HD13	1.76	0.49
2:A:441:ASN:C	2:A:441:ASN:ND2	2.70	0.49
2:C:594:LEU:HB2	2:C:613:LEU:HD11	1.94	0.49
2:A:186:MET:O	3:A:1301:ADP:N6	2.46	0.49
2:B:888:PHE:HA	2:B:992:LEU:HD21	1.95	0.49
2:C:570:ASP:OD1	2:C:570:ASP:N	2.46	0.49
2:C:572:PRO:HG2	2:C:575:ILE:HG13	1.95	0.49
2:C:718:GLU:HA	2:C:740:LEU:H	1.78	0.49
2:D:549:MET:HG3	2:D:552:LEU:HD22	1.95	0.49
2:C:638:THR:HA	2:C:660:LEU:HA	1.94	0.49
2:D:903:GLU:OE2	2:D:903:GLU:N	2.44	0.49
1:R:29:LYS:NZ	1:R:61:GLU:OE2	2.46	0.49
2:A:684:LEU:O	2:A:707:LEU:HD23	2.12	0.49
2:A:687:ILE:HB	2:A:710:PHE:HB3	1.95	0.49
2:A:873:ALA:HB3	2:A:987:CYS:SG	2.53	0.49
2:B:859:LEU:HD12	2:B:948:PHE:HB2	1.94	0.49
2:D:485:HIS:HB3	2:D:488:LEU:HD23	1.94	0.49
2:D:511:GLU:HG3	2:D:512:LYS:N	2.28	0.49
2:D:673:LEU:HB3	2:D:693:LEU:HD23	1.94	0.49
2:C:228:HIS:HB2	2:C:295:ILE:HD12	1.95	0.49
2:D:822:ASN:ND2	2:D:843:GLU:OE1	2.36	0.49
2:A:299:VAL:HG22	2:A:324:THR:HB	1.95	0.48
2:A:523:ASN:OD1	2:A:524:ARG:N	2.46	0.48
2:B:644:SER:HB3	2:B:666:SER:HB2	1.95	0.48
1:P:43:CYS:HB2	1:P:86:GLU:OE1	2.13	0.48
1:P:52:ARG:HH21	2:A:788:ASP:CG	2.21	0.48
1:P:53:MET:HE1	1:P:65:TYR:HB3	1.95	0.48

Continued on next page...

Continued from previous page...

Atom-1	Atom-2	Interatomic distance (Å)	Clash overlap (Å)
2:A:450:LEU:HD22	2:A:627:LYS:HE3	1.94	0.48
2:A:526:ILE:HB	2:A:549:MET:SD	2.53	0.48
2:A:715:THR:HB	2:A:734:LEU:HD23	1.95	0.48
2:B:550:CYS:HA	2:B:578:PRO:HB3	1.95	0.48
2:B:656:SER:HA	2:B:680:SER:HB3	1.94	0.48
2:B:913:TRP:CG	2:B:921:SER:HG	2.31	0.48
2:C:752:LYS:HB2	2:C:773:GLU:CB	2.43	0.48
2:C:880:ILE:HG13	2:C:971:ILE:HD12	1.95	0.48
2:D:562:TRP:HH2	2:D:567:ARG:HA	1.77	0.48
1:Q:27:ARG:NH2	1:Q:90:ASP:O	2.46	0.48
2:C:797:LEU:HG	2:C:817:SER:HB3	1.95	0.48
2:D:507:LEU:HB3	2:D:513:ILE:HG12	1.96	0.48
2:D:654:VAL:HG12	2:D:654:VAL:O	2.13	0.48
2:D:800:LEU:HD11	2:D:821:LEU:HD12	1.94	0.48
1:P:52:ARG:HD3	1:P:53:MET:H	1.79	0.48
2:A:660:LEU:O	2:A:683:SER:HB3	2.13	0.48
2:B:379:ASP:HB3	2:B:485:HIS:CE1	2.48	0.48
2:B:617:TRP:CH2	2:B:623:LEU:HD22	2.48	0.48
2:D:451:MET:HE1	2:D:583:LEU:HD13	1.96	0.48
2:A:209:MET:HB2	2:A:311:MET:SD	2.53	0.48
1:S:84:VAL:HG13	1:S:85:ASN:ND2	2.28	0.48
2:A:708:ARG:NH1	2:A:709:ARG:O	2.46	0.48
2:D:205:GLU:O	2:D:317:GLY:N	2.45	0.48
2:A:744:LYS:HB3	2:A:766:ASN:HB3	1.96	0.48
2:C:818:LEU:HB3	2:C:839:LYS:O	2.13	0.48
1:R:52:ARG:NH2	2:C:788:ASP:OD1	2.47	0.48
2:C:379:ASP:HB3	2:C:485:HIS:CE1	2.49	0.48
2:C:709:ARG:HA	2:C:709:ARG:HD3	1.52	0.48
2:C:837:CYS:HA	2:C:861:PRO:HG3	1.95	0.48
2:B:196:MET:HG3	2:B:227:LEU:HD11	1.95	0.47
2:D:609:GLN:HG3	2:D:632:SER:HB2	1.96	0.47
2:A:593:ARG:NH1	2:A:594:LEU:O	2.46	0.47
2:D:773:GLU:O	2:D:795:LYS:NZ	2.46	0.47
2:A:707:LEU:O	2:A:726:THR:OG1	2.30	0.47
2:B:326:ASN:HB3	2:B:329:ILE:HD12	1.95	0.47
2:B:496:CYS:O	2:B:503:LYS:HB3	2.13	0.47
2:D:894:MET:HE3	2:D:984:ILE:HG12	1.95	0.47
2:A:295:ILE:HG13	2:A:321:ILE:HB	1.96	0.47
2:A:445:ALA:N	2:A:480:LYS:O	2.29	0.47
2:C:553:LEU:HD22	2:C:582:ARG:HG3	1.95	0.47
2:C:667:ILE:HA	2:C:670:LEU:HG	1.96	0.47

Continued on next page...

Continued from previous page...

Atom-1	Atom-2	Interatomic distance (Å)	Clash overlap (Å)
2:A:370:LEU:O	2:A:374:VAL:HG23	2.15	0.47
1:P:58:ASP:HA	1:P:63:ALA:HA	1.95	0.47
1:S:54:LYS:O	1:S:66:LYS:N	2.34	0.47
2:A:881:PRO:HA	2:A:970:ASN:H	1.80	0.47
2:C:370:LEU:O	2:C:374:VAL:HG23	2.15	0.47
2:C:472:ILE:HD12	2:C:482:VAL:HG13	1.97	0.47
2:C:699:LEU:HG	2:C:701:MET:HE1	1.96	0.47
2:D:373:GLU:OE2	2:D:408:ARG:NH1	2.47	0.47
2:D:766:ASN:OD1	2:D:790:CYS:N	2.36	0.47
2:D:242:ASP:N	2:D:242:ASP:OD1	2.47	0.47
2:B:789:LEU:HD12	2:B:807:LEU:HD22	1.97	0.47
2:B:832:LEU:O	2:B:858:ALA:HA	2.15	0.47
2:D:330:LEU:HD22	2:D:335:ILE:HD12	1.97	0.47
2:A:748:SER:HB3	2:A:770:SER:OG	2.14	0.47
2:D:748:SER:O	2:D:751:LEU:HD22	2.14	0.47
1:P:36:SER:O	1:P:40:CYS:HB2	2.15	0.46
2:A:768:SER:C	2:A:793:GLY:HA3	2.40	0.46
2:B:882:TYR:OH	2:B:954:LEU:O	2.29	0.46
2:C:507:LEU:HB2	2:C:529:VAL:HA	1.96	0.46
1:P:56:ILE:HB	1:P:64:THR:HG23	1.97	0.46
2:A:578:PRO:HG2	2:A:581:ILE:HG23	1.97	0.46
2:B:727:LEU:HD13	2:B:751:LEU:HD13	1.97	0.46
2:D:447:HIS:O	2:D:451:MET:HG3	2.15	0.46
1:P:30:LYS:HE3	1:P:89:ILE:HG23	1.96	0.46
1:R:75:ALA:O	2:C:478:GLN:NE2	2.49	0.46
2:C:715:THR:O	2:C:737:CYS:HA	2.16	0.46
2:D:224:ALA:HB2	2:D:323:THR:HG21	1.96	0.46
2:D:711:PRO:HB3	2:D:732:ALA:H	1.81	0.46
2:D:794:CYS:SG	2:D:795:LYS:N	2.87	0.46
2:B:833:TYR:CB	2:B:859:LEU:HB3	2.46	0.46
2:C:654:VAL:HG12	2:C:654:VAL:O	2.16	0.46
2:D:701:MET:O	2:D:704:CYS:HB2	2.15	0.46
2:C:764:HIS:CE1	2:C:766:ASN:HB2	2.49	0.46
1:Q:28:ILE:HD12	1:Q:40:CYS:HB2	1.97	0.46
2:A:475:ASP:OD1	2:A:475:ASP:N	2.39	0.46
2:B:531:PHE:O	2:B:557:VAL:HA	2.16	0.46
2:B:928:HIS:CD2	2:B:930:SER:H	2.34	0.46
2:D:260:ARG:O	2:D:264:GLN:HG3	2.15	0.46
2:D:554:PHE:HB3	2:D:583:LEU:HB3	1.96	0.46
2:A:972:MET:HE3	2:A:973:LEU:N	2.30	0.46
2:B:543:PRO:HD2	2:B:544:LYS:HZ3	1.80	0.46

Continued on next page...

Continued from previous page...

Atom-1	Atom-2	Interatomic distance (Å)	Clash overlap (Å)
2:C:714:PRO:HD2	2:C:717:ILE:HD11	1.97	0.46
2:C:888:PHE:HB3	2:C:952:SER:HB2	1.98	0.46
2:D:299:VAL:HG11	2:D:322:VAL:HG13	1.98	0.46
2:D:869:PHE:HZ	2:D:889:LYS:HG2	1.79	0.46
1:R:36:SER:HA	1:R:39:LEU:HB3	1.98	0.46
2:A:261:LEU:HD21	2:A:308:LEU:HD21	1.96	0.46
2:B:370:LEU:O	2:B:374:VAL:HG23	2.16	0.46
2:D:196:MET:HG3	2:D:227:LEU:HD11	1.96	0.46
2:A:700:ASN:HA	2:A:721:GLN:HB2	1.97	0.46
2:A:705:SER:H	2:A:725:THR:HB	1.81	0.46
2:A:787:HIS:ND1	2:A:788:ASP:HB2	2.30	0.46
2:B:950:PHE:CE1	2:B:952:SER:HB3	2.51	0.46
2:C:683:SER:HA	2:C:706:ARG:CZ	2.45	0.46
2:C:727:LEU:HB2	2:C:748:SER:HA	1.97	0.46
2:D:745:ILE:HG13	2:D:766:ASN:HB2	1.97	0.46
2:D:941:LYS:HG3	2:D:942:LEU:N	2.29	0.46
1:R:52:ARG:HH11	2:C:930:SER:HB2	1.81	0.46
2:A:606:VAL:HG21	2:A:617:TRP:CZ3	2.49	0.46
2:C:449:THR:HA	2:C:459:VAL:HG11	1.98	0.45
2:C:749:VAL:HG23	2:C:750:ASN:H	1.81	0.45
2:A:904:LEU:H	2:A:904:LEU:HD23	1.81	0.45
2:B:766:ASN:HA	2:B:790:CYS:HB2	1.98	0.45
2:C:740:LEU:HD11	2:C:759:PRO:HB3	1.98	0.45
2:C:556:LYS:HA	2:C:585:HIS:O	2.17	0.45
2:C:859:LEU:HD21	2:C:946:HIS:CE1	2.51	0.45
2:C:947:LEU:HD23	2:C:949:ILE:HD11	1.99	0.45
2:D:977:SER:HG	2:D:982:PHE:H	1.62	0.45
2:A:209:MET:HG3	2:A:320:VAL:HB	1.97	0.45
2:A:279:HIS:CE1	2:A:281:SER:HB3	2.52	0.45
2:C:744:LYS:HA	2:C:766:ASN:O	2.17	0.45
2:D:204:LYS:HB3	2:D:204:LYS:HE3	1.77	0.45
2:D:766:ASN:HD21	2:D:789:LEU:HA	1.82	0.45
2:A:208:LYS:NZ	2:A:337:ASP:OD2	2.36	0.45
2:B:680:SER:OG	2:B:681:CYS:N	2.48	0.45
2:C:650:GLU:HA	2:C:672:LYS:O	2.17	0.45
2:C:688:PRO:HB2	2:C:690:LEU:HD22	1.99	0.45
2:B:866:PRO:HD2	2:B:869:PHE:CZ	2.52	0.45
2:D:562:TRP:CH2	2:D:567:ARG:HA	2.51	0.45
2:D:751:LEU:HB2	2:D:754:PHE:HB2	1.97	0.45
2:D:891:CYS:SG	2:D:947:LEU:HD11	2.57	0.45
2:A:190:GLU:OE1	2:A:230:ARG:NH2	2.49	0.45

Continued on next page...

Continued from previous page...

Atom-1	Atom-2	Interatomic distance (Å)	Clash overlap (Å)
2:A:883:SER:OG	2:A:885:SER:O	2.27	0.45
2:C:707:LEU:HD13	2:C:710:PHE:HE2	1.82	0.45
2:D:764:HIS:HD2	2:D:788:ASP:HB3	1.82	0.45
2:A:705:SER:HA	2:A:725:THR:HA	1.98	0.45
2:A:894:MET:HE1	2:A:984:ILE:HD11	1.99	0.44
2:A:949:ILE:O	2:A:950:PHE:HD1	2.00	0.44
2:B:439:PHE:CE1	2:B:530:SER:HB2	2.52	0.44
2:C:311:MET:HE3	2:C:311:MET:HA	1.98	0.44
1:S:49:GLY:HA3	2:D:698:PHE:HZ	1.82	0.44
1:S:53:MET:HE2	1:S:53:MET:HA	1.98	0.44
2:A:562:TRP:CZ2	2:A:565:GLY:HA3	2.52	0.44
2:D:566:LYS:HE3	2:D:568:LYS:HB3	1.98	0.44
2:B:693:LEU:HB3	2:B:696:LEU:HB3	1.98	0.44
2:B:833:TYR:HB2	2:B:859:LEU:HB3	2.00	0.44
2:C:662:GLU:HB3	2:C:686:VAL:HG22	1.99	0.44
2:D:869:PHE:CZ	2:D:889:LYS:HG2	2.52	0.44
1:R:39:LEU:HD11	1:R:85:ASN:O	2.17	0.44
2:A:546:PHE:CD2	2:A:575:ILE:HD11	2.50	0.44
2:A:608:MET:HE3	2:A:613:LEU:HD11	2.00	0.44
2:A:787:HIS:HA	2:A:807:LEU:HD12	1.99	0.44
2:D:242:ASP:HB3	2:D:297:ASP:HB3	1.99	0.44
2:D:802:GLU:O	2:D:803:LEU:HD12	2.18	0.44
2:A:436:ILE:HD11	2:A:482:VAL:HG21	1.99	0.44
2:A:531:PHE:N	2:A:556:LYS:O	2.44	0.44
2:A:869:PHE:CD2	2:A:990:GLN:HG3	2.52	0.44
2:A:984:ILE:HG22	2:A:986:GLU:H	1.82	0.44
2:A:727:LEU:HD21	2:A:748:SER:OG	2.18	0.44
2:D:751:LEU:HG	2:D:754:PHE:HB3	1.98	0.44
2:A:510:ALA:HA	2:A:513:ILE:HD12	1.99	0.44
2:A:851:GLN:HG2	2:A:853:PHE:CZ	2.53	0.44
2:B:187:VAL:HG11	2:B:351:THR:HG23	1.99	0.44
2:B:224:ALA:HB2	2:B:323:THR:HG21	2.00	0.44
2:B:432:LEU:HG	2:B:436:ILE:HD12	2.00	0.44
2:B:742:THR:HG21	2:B:744:LYS:HZ1	1.83	0.44
2:C:786:LEU:HD13	2:C:807:LEU:HD12	2.00	0.44
2:D:894:MET:CE	2:D:984:ILE:HA	2.48	0.44
1:P:72:PHE:HA	1:P:75:ALA:HB3	2.00	0.44
2:A:529:VAL:HG12	2:A:552:LEU:HD11	2.00	0.44
2:B:242:ASP:OD1	2:B:243:ASN:N	2.43	0.44
2:B:754:PHE:CE1	2:B:775:ILE:HG12	2.53	0.44
2:C:719:ASP:OD1	2:C:720:VAL:N	2.51	0.44

Continued on next page...

Continued from previous page...

Atom-1	Atom-2	Interatomic distance (Å)	Clash overlap (Å)
2:A:449:THR:HA	2:A:459:VAL:HG11	1.99	0.43
2:B:682:GLU:OE2	2:B:706:ARG:NH1	2.45	0.43
2:D:752:LYS:HZ2	2:D:772:ILE:HD12	1.82	0.43
1:Q:56:ILE:HG13	1:Q:64:THR:HG23	1.99	0.43
1:R:54:LYS:HE3	2:C:926:THR:HG22	2.00	0.43
1:S:51:SER:HG	1:S:68:THR:HG1	1.61	0.43
2:A:485:HIS:HB3	2:A:488:LEU:HD23	2.01	0.43
2:A:723:THR:HG23	2:A:746:SER:HB2	2.00	0.43
2:A:857:TRP:CE3	2:A:950:PHE:HE1	2.36	0.43
2:B:531:PHE:HB3	2:B:557:VAL:HB	2.00	0.43
2:C:751:LEU:HD12	2:C:752:LYS:H	1.83	0.43
2:D:265:PHE:CZ	2:D:294:ILE:HD13	2.53	0.43
1:R:29:LYS:NZ	1:R:61:GLU:O	2.40	0.43
2:A:186:MET:HB3	2:A:187:VAL:H	1.52	0.43
2:B:549:MET:HB2	2:B:549:MET:HE3	1.74	0.43
2:B:685:GLU:HG3	2:B:686:VAL:HG13	2.00	0.43
2:B:701:MET:SD	2:B:701:MET:N	2.91	0.43
2:D:837:CYS:HA	2:D:861:PRO:HB3	2.01	0.43
1:P:30:LYS:HG2	1:P:89:ILE:HA	2.01	0.43
2:A:660:LEU:HB3	2:A:684:LEU:HD11	1.99	0.43
2:B:251:CYS:SG	2:B:307:THR:HG21	2.59	0.43
2:D:977:SER:HA	2:D:982:PHE:HB2	2.00	0.43
1:R:34:ARG:HD3	2:C:902:PHE:CZ	2.53	0.43
2:A:642:ASP:OD1	2:A:642:ASP:N	2.41	0.43
2:D:894:MET:SD	2:D:982:PHE:HD1	2.40	0.43
1:R:52:ARG:NH1	2:C:931:HIS:HB3	2.33	0.43
1:R:52:ARG:HD3	1:R:53:MET:H	1.84	0.43
2:A:454:LYS:HE3	2:A:553:LEU:HD21	2.00	0.43
1:S:51:SER:OG	1:S:68:THR:OG1	2.28	0.43
2:B:615:LYS:HE3	2:B:639:GLU:HB3	2.01	0.43
2:C:531:PHE:HB3	2:C:557:VAL:HG12	2.01	0.43
2:C:670:LEU:HB2	2:C:673:LEU:HD13	2.01	0.43
2:A:552:LEU:HB3	2:A:578:PRO:HG3	2.00	0.43
2:A:758:LEU:HB3	2:A:783:LEU:HD21	2.01	0.43
2:C:660:LEU:O	2:C:660:LEU:HG	2.18	0.43
2:C:661:VAL:C	2:C:662:GLU:HG3	2.43	0.43
2:C:662:GLU:HB3	2:C:686:VAL:HG21	2.00	0.43
2:D:896:LEU:HD23	2:D:896:LEU:H	1.83	0.43
2:D:942:LEU:HG	2:D:946:HIS:CE1	2.53	0.43
2:A:593:ARG:HA	2:A:615:LYS:O	2.19	0.43
2:A:783:LEU:HB3	2:A:786:LEU:HB2	2.01	0.43

Continued on next page...

Continued from previous page...

Atom-1	Atom-2	Interatomic distance (Å)	Clash overlap (Å)
2:A:820:SER:OG	2:A:841:ASP:OD2	2.36	0.43
2:B:896:LEU:HB2	2:B:945:PRO:HG3	1.99	0.43
2:C:794:CYS:SG	2:C:795:LYS:N	2.92	0.43
2:D:495:VAL:CG2	2:D:499:GLN:HG3	2.49	0.43
2:B:221:SER:OG	3:B:1301:ADP:O3A	2.36	0.42
2:C:724:GLY:HA2	2:C:747:GLY:HA3	2.01	0.42
2:C:789:LEU:O	2:C:791:LEU:HD12	2.19	0.42
2:C:911:TYR:O	2:C:911:TYR:CG	2.72	0.42
2:C:931:HIS:O	2:C:931:HIS:CG	2.72	0.42
1:R:81:CYS:HB2	1:R:86:GLU:HB3	2.01	0.42
1:R:52:ARG:NH1	2:C:930:SER:HB2	2.35	0.42
1:S:73:VAL:HA	1:S:76:ASN:HD21	1.83	0.42
2:A:718:GLU:O	2:A:741:GLN:N	2.52	0.42
2:D:238:ASN:HA	2:D:293:LEU:O	2.18	0.42
2:D:791:LEU:HB3	2:D:809:ILE:O	2.18	0.42
2:A:586:TRP:CG	2:A:589:TYR:HD2	2.37	0.42
2:A:860:LEU:N	2:A:947:LEU:O	2.34	0.42
2:A:894:MET:HG2	2:A:948:PHE:CD2	2.50	0.42
2:C:242:ASP:OD1	2:C:243:ASN:N	2.49	0.42
2:D:604:VAL:HA	2:D:625:ASN:O	2.20	0.42
1:Q:22:LYS:HE2	2:B:741:GLN:HE21	1.85	0.42
1:Q:27:ARG:NH1	1:Q:91:LYS:HG3	2.35	0.42
1:Q:72:PHE:HB3	2:B:698:PHE:CZ	2.55	0.42
2:A:248:TYR:OH	2:A:299:VAL:HG12	2.19	0.42
2:C:261:LEU:HD21	2:C:308:LEU:HD21	2.01	0.42
2:C:837:CYS:HA	2:C:861:PRO:HB3	2.01	0.42
2:D:888:PHE:CE1	2:D:952:SER:HB2	2.55	0.42
2:A:699:LEU:O	2:A:701:MET:HG3	2.20	0.42
2:A:895:SER:OG	2:A:945:PRO:HA	2.19	0.42
2:B:517:LEU:HD12	2:B:531:PHE:HE2	1.85	0.42
2:B:811:GLN:HB2	2:B:932:MET:HE1	2.01	0.42
2:C:541:ILE:HG21	2:C:575:ILE:HD11	2.01	0.42
2:D:235:PHE:CG	2:D:293:LEU:HB2	2.55	0.42
2:B:553:LEU:HD22	2:B:582:ARG:NH1	2.33	0.42
2:C:559:ASP:OD1	2:C:560:ALA:N	2.52	0.42
2:C:623:LEU:HD12	2:C:626:LEU:HB2	2.02	0.42
2:D:294:ILE:O	2:D:320:VAL:HA	2.18	0.42
1:R:86:GLU:OE1	2:C:633:ARG:NH2	2.51	0.42
2:A:825:LEU:HD21	2:A:851:GLN:HE22	1.84	0.42
2:A:832:LEU:HB2	2:A:834:PHE:HE2	1.85	0.42
2:D:566:LYS:O	2:D:568:LYS:N	2.53	0.42

Continued on next page...

Continued from previous page...

Atom-1	Atom-2	Interatomic distance (Å)	Clash overlap (Å)
2:D:710:PHE:CD1	2:D:711:PRO:HD2	2.55	0.42
2:D:789:LEU:HB3	2:D:808:LYS:HB2	2.01	0.42
2:B:571:ILE:HG21	2:B:591:GLY:N	2.35	0.42
2:B:651:ASP:OD2	2:B:653:TYR:OH	2.25	0.42
2:B:789:LEU:O	2:B:810:LEU:HA	2.20	0.42
2:B:812:ALA:N	2:B:833:TYR:O	2.48	0.42
2:C:766:ASN:C	2:C:767:ILE:HD12	2.45	0.42
2:C:938:VAL:HG12	2:C:939:ASN:N	2.33	0.42
2:A:685:GLU:O	2:A:708:ARG:NH1	2.53	0.42
2:A:832:LEU:O	2:A:858:ALA:HA	2.20	0.42
2:B:894:MET:SD	2:B:895:SER:N	2.92	0.42
2:C:395:LYS:HE3	2:D:332:GLN:HE21	1.85	0.42
2:D:445:ALA:N	2:D:480:LYS:O	2.31	0.42
2:A:386:CYS:SG	3:A:1301:ADP:H1'	2.59	0.41
2:D:813:ASP:HB2	2:D:815:CYS:SG	2.60	0.41
2:D:894:MET:O	2:D:945:PRO:HA	2.19	0.41
2:A:751:LEU:HD12	2:A:751:LEU:HA	1.94	0.41
2:B:208:LYS:NZ	2:B:337:ASP:OD2	2.47	0.41
2:C:203:ASP:OD1	2:C:203:ASP:C	2.63	0.41
2:D:942:LEU:H	2:D:942:LEU:HD22	1.85	0.41
2:A:242:ASP:OD1	2:A:243:ASN:N	2.48	0.41
2:A:696:LEU:HD23	2:A:714:PRO:HG2	2.02	0.41
2:C:719:ASP:HA	2:C:741:GLN:O	2.19	0.41
2:D:537:ASP:OD1	2:D:537:ASP:N	2.43	0.41
2:A:893:VAL:O	2:A:984:ILE:HA	2.20	0.41
2:B:304:GLN:HA	2:B:307:THR:HG22	2.01	0.41
2:B:740:LEU:HD12	2:B:743:ILE:HD11	2.02	0.41
2:B:811:GLN:CB	2:B:932:MET:HE1	2.50	0.41
2:B:894:MET:HE2	2:B:909:LEU:HB2	2.02	0.41
2:B:950:PHE:C	2:B:950:PHE:CD1	2.99	0.41
2:C:219:GLY:O	2:C:223:ILE:HG23	2.20	0.41
2:D:800:LEU:HB3	2:D:804:PRO:HG3	2.02	0.41
1:P:46:ASN:HD22	2:A:935:ALA:HB2	1.85	0.41
1:R:53:MET:O	2:C:930:SER:HB3	2.20	0.41
2:A:531:PHE:O	2:A:557:VAL:HA	2.21	0.41
2:B:687:ILE:HG21	2:B:709:ARG:O	2.20	0.41
2:C:751:LEU:O	2:C:772:ILE:HA	2.20	0.41
2:D:495:VAL:HG22	2:D:499:GLN:HG3	2.03	0.41
2:D:593:ARG:HH12	2:D:618:GLU:CD	2.28	0.41
2:D:713:ILE:HG22	2:D:737:CYS:SG	2.61	0.41
2:D:887:ARG:HD2	2:D:953:CYS:HA	2.02	0.41

Continued on next page...

Continued from previous page...

Atom-1	Atom-2	Interatomic distance (Å)	Clash overlap (Å)
1:R:55:LEU:HD21	1:R:58:ASP:HB2	2.03	0.41
2:A:585:HIS:HA	2:A:607:ASN:HB3	2.03	0.41
2:B:414:ILE:HG22	2:B:418:LEU:HD13	2.02	0.41
2:C:209:MET:HG3	2:C:311:MET:SD	2.61	0.41
1:P:85:ASN:ND2	2:A:563:HIS:O	2.49	0.41
1:R:39:LEU:HD21	1:R:85:ASN:C	2.46	0.41
1:S:27:ARG:HD3	1:S:91:LYS:HD2	2.03	0.41
2:A:515:TYR:HA	2:A:518:GLU:HB2	2.02	0.41
2:A:640:LEU:HD21	2:A:654:VAL:HG21	2.02	0.41
2:B:445:ALA:HA	2:B:448:VAL:HG12	2.01	0.41
2:C:556:LYS:HB2	2:C:556:LYS:HE3	1.92	0.41
2:C:766:ASN:O	2:C:767:ILE:HD12	2.20	0.41
2:D:247:ASN:HB2	2:D:264:GLN:OE1	2.20	0.41
2:D:414:ILE:HG22	2:D:418:LEU:HG	2.02	0.41
2:D:777:GLU:HG2	2:D:780:ILE:HG13	2.02	0.41
2:D:808:LYS:O	2:D:833:TYR:N	2.54	0.41
1:P:82:SER:HA	1:P:87:CYS:O	2.20	0.41
2:A:210:VAL:O	2:A:321:ILE:HA	2.21	0.41
2:B:592:LYS:HG2	2:B:612:GLU:O	2.21	0.41
2:B:670:LEU:HA	2:B:670:LEU:HD23	1.86	0.41
2:B:696:LEU:HD12	2:B:697:THR:N	2.35	0.41
2:B:730:LEU:HA	2:B:731:PRO:HD3	1.91	0.41
2:B:811:GLN:HG2	2:B:832:LEU:HA	2.02	0.41
2:C:445:ALA:HA	2:C:448:VAL:HG12	2.01	0.41
2:D:438:VAL:HG23	2:D:439:PHE:CD2	2.55	0.41
2:D:701:MET:HB3	2:D:704:CYS:HB2	2.03	0.41
1:P:55:LEU:HD13	1:P:65:TYR:HE1	1.86	0.41
1:Q:53:MET:HE1	1:Q:67:ILE:HA	2.02	0.41
1:S:58:ASP:HB2	2:D:906:PRO:HB2	2.02	0.41
2:A:705:SER:O	2:A:706:ARG:HD2	2.21	0.41
2:A:860:LEU:HB3	2:A:947:LEU:HG	2.02	0.41
2:B:247:ASN:ND2	2:B:264:GLN:OE1	2.35	0.41
2:B:608:MET:HE1	2:B:613:LEU:HD22	2.02	0.41
2:B:896:LEU:HG	2:B:945:PRO:HD3	2.01	0.41
2:D:972:MET:HE3	2:D:973:LEU:N	2.36	0.41
2:A:444:CYS:O	2:A:448:VAL:HG23	2.21	0.41
2:C:418:LEU:HD21	2:C:487:LEU:HB3	2.03	0.41
2:C:478:GLN:OE1	2:C:478:GLN:O	2.38	0.41
2:C:723:THR:HG23	2:C:746:SER:HB3	2.02	0.41
2:D:189:LEU:HG	2:D:193:LEU:HD13	2.03	0.41
2:D:629:ILE:HG22	2:D:649:LEU:HD11	2.03	0.41

Continued on next page...

Continued from previous page...

Atom-1	Atom-2	Interatomic distance (Å)	Clash overlap (Å)
2:A:479:LYS:HG3	2:A:479:LYS:O	2.21	0.40
2:C:709:ARG:NH2	2:C:727:LEU:HA	2.36	0.40
2:C:717:ILE:O	2:C:740:LEU:N	2.51	0.40
2:C:783:LEU:HD12	2:C:786:LEU:HD23	2.03	0.40
2:D:373:GLU:CD	2:D:408:ARG:HH12	2.30	0.40
2:D:464:LYS:HB2	2:D:464:LYS:HE3	1.90	0.40
2:A:930:SER:C	2:A:932:MET:H	2.29	0.40
2:C:451:MET:HE1	2:C:583:LEU:HB2	2.03	0.40
2:C:818:LEU:O	2:C:820:SER:N	2.54	0.40
1:P:87:CYS:SG	1:P:88:ASN:N	2.95	0.40
2:B:886:ASN:HB3	2:B:992:LEU:HD12	2.03	0.40
2:D:444:CYS:O	2:D:448:VAL:HG23	2.22	0.40
2:D:737:CYS:O	2:D:759:PRO:HD2	2.22	0.40
1:S:46:ASN:ND2	2:D:935:ALA:O	2.45	0.40
1:S:48:LEU:HD21	1:S:81:CYS:N	2.34	0.40
2:A:651:ASP:OD2	2:A:653:TYR:OH	2.30	0.40
2:C:425:LEU:HD13	2:C:469:ARG:HD2	2.03	0.40
1:Q:53:MET:HE2	1:Q:53:MET:HA	2.04	0.40
2:A:207:VAL:HG22	2:A:311:MET:HE2	2.04	0.40
2:A:710:PHE:N	2:A:728:GLU:OE2	2.48	0.40
2:B:816:ASP:N	2:B:816:ASP:OD1	2.55	0.40
2:C:251:CYS:SG	2:C:307:THR:HG21	2.61	0.40
2:C:727:LEU:HA	2:C:727:LEU:HD23	1.94	0.40
2:D:790:CYS:SG	2:D:934:ASN:ND2	2.80	0.40

There are no symmetry-related clashes.

5.3 Torsion angles [i](#)

5.3.1 Protein backbone [i](#)

In the following table, the Percentiles column shows the percent Ramachandran outliers of the chain as a percentile score with respect to all PDB entries followed by that with respect to all EM entries.

The Analysed column shows the number of residues for which the backbone conformation was analysed, and the total number of residues.

Mol	Chain	Analysed	Favoured	Allowed	Outliers	Percentiles
1	P	75/216 (35%)	65 (87%)	10 (13%)	0	100 100

Continued on next page...

Continued from previous page...

Mol	Chain	Analysed	Favoured	Allowed	Outliers	Percentiles	
1	Q	75/216 (35%)	75 (100%)	0	0	100	100
1	R	75/216 (35%)	73 (97%)	2 (3%)	0	100	100
1	S	75/216 (35%)	73 (97%)	2 (3%)	0	100	100
2	A	795/1007 (79%)	719 (90%)	70 (9%)	6 (1%)	16	49
2	B	795/1007 (79%)	734 (92%)	55 (7%)	6 (1%)	16	49
2	C	795/1007 (79%)	721 (91%)	70 (9%)	4 (0%)	24	57
2	D	795/1007 (79%)	715 (90%)	80 (10%)	0	100	100
All	All	3480/4892 (71%)	3175 (91%)	289 (8%)	16 (0%)	26	57

All (16) Ramachandran outliers are listed below:

Mol	Chain	Res	Type
2	A	575	ILE
2	B	529	VAL
2	B	890	VAL
2	C	819	GLU
2	A	622	CYS
2	A	938	VAL
2	C	851	GLN
2	A	624	ALA
2	B	811	GLN
2	C	890	VAL
2	C	837	CYS
2	A	895	SER
2	B	918	ASP
2	B	937	SER
2	A	681	CYS
2	B	748	SER

5.3.2 Protein sidechains ⓘ

In the following table, the Percentiles column shows the percent sidechain outliers of the chain as a percentile score with respect to all PDB entries followed by that with respect to all EM entries.

The Analysed column shows the number of residues for which the sidechain conformation was analysed, and the total number of residues.

Mol	Chain	Analysed	Rotameric	Outliers	Percentiles	
1	P	68/196 (35%)	66 (97%)	2 (3%)	37	60
1	Q	68/196 (35%)	68 (100%)	0	100	100
1	R	68/196 (35%)	68 (100%)	0	100	100
1	S	68/196 (35%)	68 (100%)	0	100	100
2	A	721/907 (80%)	701 (97%)	20 (3%)	38	61
2	B	721/907 (80%)	703 (98%)	18 (2%)	42	63
2	C	721/907 (80%)	699 (97%)	22 (3%)	35	59
2	D	721/907 (80%)	701 (97%)	20 (3%)	38	61
All	All	3156/4412 (72%)	3074 (97%)	82 (3%)	41	62

All (82) residues with a non-rotameric sidechain are listed below:

Mol	Chain	Res	Type
1	P	38	SER
1	P	48	LEU
2	A	277	LEU
2	A	308	LEU
2	A	311	MET
2	A	424	SER
2	A	441	ASN
2	A	516	VAL
2	A	557	VAL
2	A	569	LEU
2	A	593	ARG
2	A	623	LEU
2	A	637	LEU
2	A	658	THR
2	A	690	LEU
2	A	707	LEU
2	A	708	ARG
2	A	715	THR
2	A	730	LEU
2	A	933	PHE
2	A	949	ILE
2	A	991	ILE
2	B	187	VAL
2	B	241	VAL
2	B	260	ARG
2	B	506	ILE
2	B	557	VAL

Continued on next page...

Continued from previous page...

Mol	Chain	Res	Type
2	B	562	TRP
2	B	598	PHE
2	B	623	LEU
2	B	629	ILE
2	B	643	LEU
2	B	658	THR
2	B	663	LEU
2	B	676	ILE
2	B	677	MET
2	B	735	THR
2	B	756	THR
2	B	786	LEU
2	B	949	ILE
2	C	223	ILE
2	C	277	LEU
2	C	513	ILE
2	C	557	VAL
2	C	568	LYS
2	C	598	PHE
2	C	629	ILE
2	C	642	ASP
2	C	648	ASN
2	C	658	THR
2	C	662	GLU
2	C	663	LEU
2	C	720	VAL
2	C	740	LEU
2	C	750	ASN
2	C	751	LEU
2	C	752	LYS
2	C	786	LEU
2	C	817	SER
2	C	818	LEU
2	C	832	LEU
2	C	838	PHE
2	D	191	ARG
2	D	218	ILE
2	D	269	ILE
2	D	299	VAL
2	D	320	VAL
2	D	323	THR
2	D	441	ASN

Continued on next page...

Continued from previous page...

Mol	Chain	Res	Type
2	D	495	VAL
2	D	554	PHE
2	D	568	LYS
2	D	629	ILE
2	D	687	ILE
2	D	717	ILE
2	D	751	LEU
2	D	752	LYS
2	D	797	LEU
2	D	803	LEU
2	D	941	LYS
2	D	942	LEU
2	D	943	GLN

Sometimes sidechains can be flipped to improve hydrogen bonding and reduce clashes. All (33) such sidechains are listed below:

Mol	Chain	Res	Type
1	P	57	ASN
1	Q	57	ASN
1	Q	85	ASN
1	R	85	ASN
1	S	76	ASN
2	A	288	GLN
2	A	333	HIS
2	A	340	GLN
2	A	505	GLN
2	A	625	ASN
2	A	811	GLN
2	A	886	ASN
2	A	934	ASN
2	B	238	ASN
2	B	340	GLN
2	B	409	ASN
2	B	441	ASN
2	B	563	HIS
2	B	785	ASN
2	B	900	GLN
2	B	928	HIS
2	C	238	ASN
2	C	304	GLN
2	C	340	GLN
2	C	505	GLN

Continued on next page...

Continued from previous page...

Mol	Chain	Res	Type
2	C	625	ASN
2	C	750	ASN
2	C	764	HIS
2	D	236	GLN
2	D	340	GLN
2	D	447	HIS
2	D	850	GLN
2	D	939	ASN

5.3.3 RNA [i](#)

There are no RNA molecules in this entry.

5.4 Non-standard residues in protein, DNA, RNA chains [i](#)

There are no non-standard protein/DNA/RNA residues in this entry.

5.5 Carbohydrates [i](#)

There are no oligosaccharides in this entry.

5.6 Ligand geometry [i](#)

4 ligands are modelled in this entry.

In the following table, the Counts columns list the number of bonds (or angles) for which Mogul statistics could be retrieved, the number of bonds (or angles) that are observed in the model and the number of bonds (or angles) that are defined in the Chemical Component Dictionary. The Link column lists molecule types, if any, to which the group is linked. The Z score for a bond length (or angle) is the number of standard deviations the observed value is removed from the expected value. A bond length (or angle) with $|Z| > 2$ is considered an outlier worth inspection. RMSZ is the root-mean-square of all Z scores of the bond lengths (or angles).

Mol	Type	Chain	Res	Link	Bond lengths			Bond angles		
					Counts	RMSZ	$\# Z > 2$	Counts	RMSZ	$\# Z > 2$
3	ADP	A	1301	-	27,29,29	1.34	4 (14%)	42,45,45	1.86	8 (19%)
3	ADP	B	1301	-	27,29,29	1.34	4 (14%)	42,45,45	1.93	9 (21%)
3	ADP	D	1301	-	27,29,29	1.33	4 (14%)	42,45,45	1.92	9 (21%)
3	ADP	C	1301	-	27,29,29	1.34	4 (14%)	42,45,45	1.94	9 (21%)

In the following table, the Chirals column lists the number of chiral outliers, the number of chiral centers analysed, the number of these observed in the model and the number defined in the Chemical Component Dictionary. Similar counts are reported in the Torsion and Rings columns. '-' means no outliers of that kind were identified.

Mol	Type	Chain	Res	Link	Chirals	Torsions	Rings
3	ADP	A	1301	-	-	7/16/32/32	0/3/3/3
3	ADP	B	1301	-	-	6/16/32/32	0/3/3/3
3	ADP	D	1301	-	-	7/16/32/32	0/3/3/3
3	ADP	C	1301	-	-	1/16/32/32	0/3/3/3

All (16) bond length outliers are listed below:

Mol	Chain	Res	Type	Atoms	Z	Observed(Å)	Ideal(Å)
3	A	1301	ADP	C5-C4	4.46	1.47	1.39
3	B	1301	ADP	C5-C4	4.35	1.47	1.39
3	C	1301	ADP	C5-C4	4.33	1.47	1.39
3	D	1301	ADP	C5-C4	4.30	1.47	1.39
3	B	1301	ADP	C5-C6	2.53	1.48	1.41
3	C	1301	ADP	C5-C6	2.51	1.48	1.41
3	D	1301	ADP	C5-C6	2.51	1.48	1.41
3	A	1301	ADP	C5-C6	2.48	1.48	1.41
3	B	1301	ADP	C5-N7	-2.35	1.34	1.39
3	B	1301	ADP	C8-N7	2.35	1.36	1.31
3	C	1301	ADP	C5-N7	-2.34	1.34	1.39
3	A	1301	ADP	C5-N7	-2.33	1.34	1.39
3	D	1301	ADP	C8-N7	2.31	1.36	1.31
3	D	1301	ADP	C5-N7	-2.30	1.34	1.39
3	C	1301	ADP	C8-N7	2.28	1.35	1.31
3	A	1301	ADP	C8-N7	2.23	1.35	1.31

All (35) bond angle outliers are listed below:

Mol	Chain	Res	Type	Atoms	Z	Observed(°)	Ideal(°)
3	B	1301	ADP	C5-C4-N3	-6.19	118.67	126.75
3	A	1301	ADP	C5-C4-N3	-6.17	118.70	126.75
3	C	1301	ADP	C5-C4-N3	-6.17	118.70	126.75
3	D	1301	ADP	C5-C4-N3	-6.15	118.73	126.75
3	A	1301	ADP	N3-C4-N9	4.92	135.18	127.08
3	B	1301	ADP	N3-C4-N9	4.84	135.06	127.08
3	C	1301	ADP	N3-C4-N9	4.82	135.03	127.08
3	D	1301	ADP	N3-C4-N9	4.80	134.99	127.08
3	B	1301	ADP	C2-N3-C4	3.85	120.83	111.75
3	D	1301	ADP	C2-N3-C4	3.82	120.78	111.75

Continued on next page...

Continued from previous page...

Mol	Chain	Res	Type	Atoms	Z	Observed(°)	Ideal(°)
3	C	1301	ADP	C2-N3-C4	3.79	120.70	111.75
3	A	1301	ADP	C2-N3-C4	3.74	120.59	111.75
3	C	1301	ADP	PA-O3A-PB	-3.49	120.84	132.83
3	B	1301	ADP	PA-O3A-PB	-3.37	121.25	132.83
3	D	1301	ADP	PA-O3A-PB	-3.23	121.74	132.83
3	D	1301	ADP	C4-C5-N7	-3.19	106.73	110.62
3	B	1301	ADP	C4-C5-N7	-3.18	106.75	110.62
3	C	1301	ADP	C4-C5-N7	-3.18	106.75	110.62
3	D	1301	ADP	N3-C2-N1	-3.14	123.69	128.60
3	B	1301	ADP	N3-C2-N1	-3.13	123.71	128.60
3	C	1301	ADP	N3-C2-N1	-3.06	123.82	128.60
3	A	1301	ADP	N3-C2-N1	-2.98	123.94	128.60
3	A	1301	ADP	C4-C5-N7	-2.98	106.99	110.62
3	D	1301	ADP	C5-N7-C8	2.67	107.30	103.51
3	B	1301	ADP	C5-N7-C8	2.64	107.27	103.51
3	C	1301	ADP	C5-N7-C8	2.64	107.26	103.51
3	D	1301	ADP	C4-N9-C8	2.55	108.49	105.73
3	B	1301	ADP	C4-N9-C8	2.55	108.49	105.73
3	C	1301	ADP	C4-N9-C8	2.52	108.46	105.73
3	A	1301	ADP	C5-N7-C8	2.50	107.05	103.51
3	A	1301	ADP	C4-N9-C8	2.45	108.38	105.73
3	A	1301	ADP	PA-O3A-PB	-2.26	125.07	132.83
3	D	1301	ADP	C6-C5-N7	2.09	135.92	132.02
3	B	1301	ADP	C6-C5-N7	2.08	135.90	132.02
3	C	1301	ADP	C6-C5-N7	2.06	135.86	132.02

There are no chirality outliers.

All (21) torsion outliers are listed below:

Mol	Chain	Res	Type	Atoms
3	A	1301	ADP	PA-O3A-PB-O2B
3	A	1301	ADP	C5'-O5'-PA-O2A
3	B	1301	ADP	C5'-O5'-PA-O2A
3	D	1301	ADP	C5'-O5'-PA-O2A
3	A	1301	ADP	O4'-C4'-C5'-O5'
3	C	1301	ADP	O4'-C4'-C5'-O5'
3	D	1301	ADP	O4'-C4'-C5'-O5'
3	B	1301	ADP	O4'-C4'-C5'-O5'
3	D	1301	ADP	C3'-C4'-C5'-O5'
3	A	1301	ADP	C5'-O5'-PA-O3A
3	B	1301	ADP	C5'-O5'-PA-O3A
3	D	1301	ADP	C5'-O5'-PA-O3A

Continued on next page...

Continued from previous page...

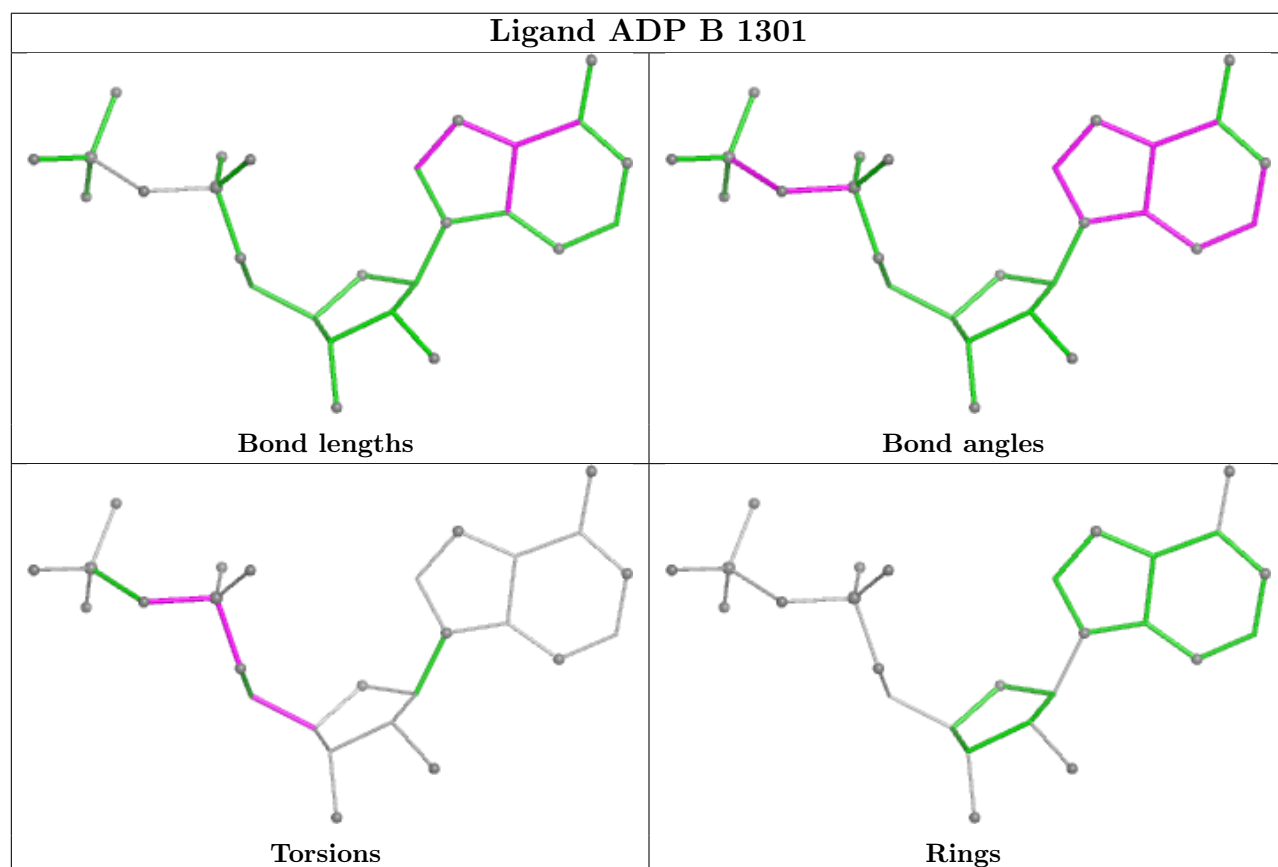
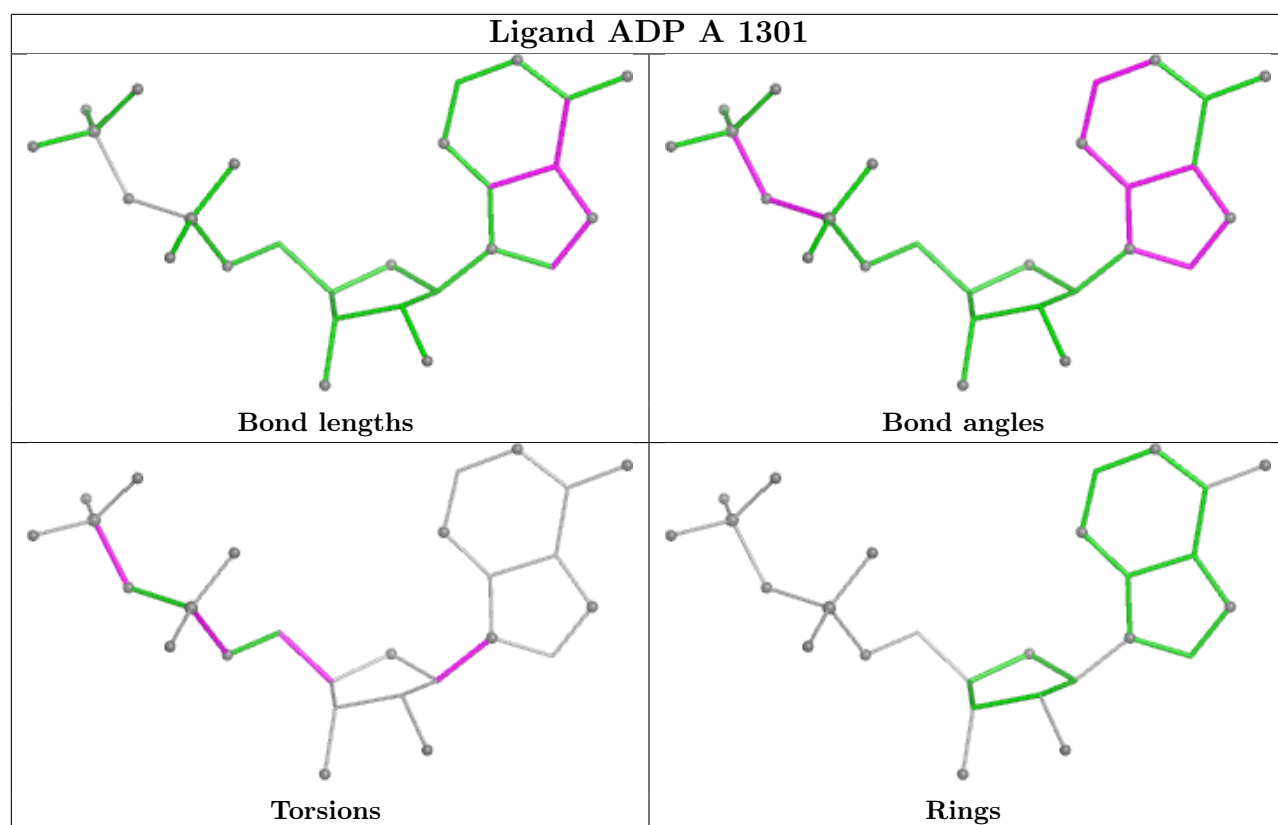
Mol	Chain	Res	Type	Atoms
3	D	1301	ADP	PB-O3A-PA-O2A
3	A	1301	ADP	C5'-O5'-PA-O1A
3	B	1301	ADP	C5'-O5'-PA-O1A
3	D	1301	ADP	C5'-O5'-PA-O1A
3	B	1301	ADP	C3'-C4'-C5'-O5'
3	B	1301	ADP	PB-O3A-PA-O2A
3	A	1301	ADP	O4'-C1'-N9-C8
3	A	1301	ADP	PA-O3A-PB-O1B
3	D	1301	ADP	PB-O3A-PA-O1A

There are no ring outliers.

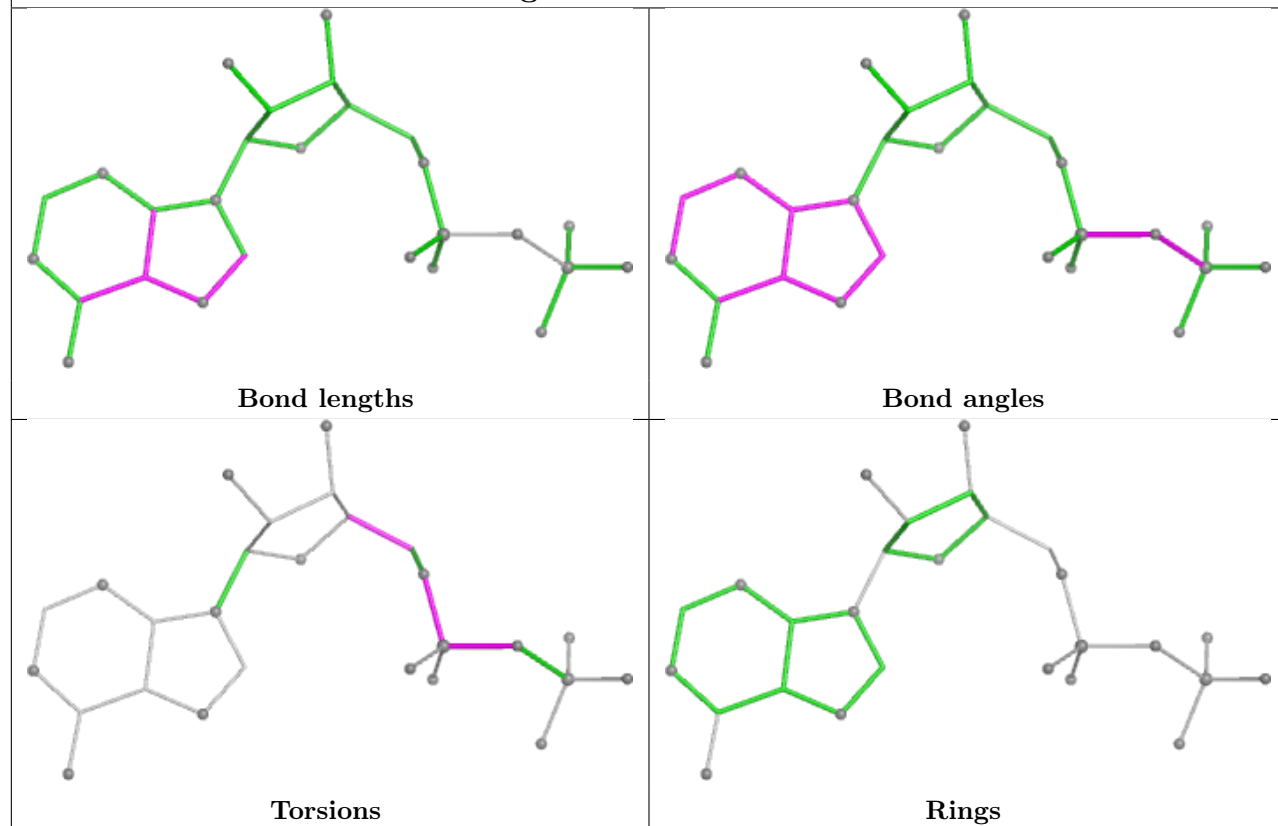
2 monomers are involved in 3 short contacts:

Mol	Chain	Res	Type	Clashes	Symm-Clashes
3	A	1301	ADP	2	0
3	B	1301	ADP	1	0

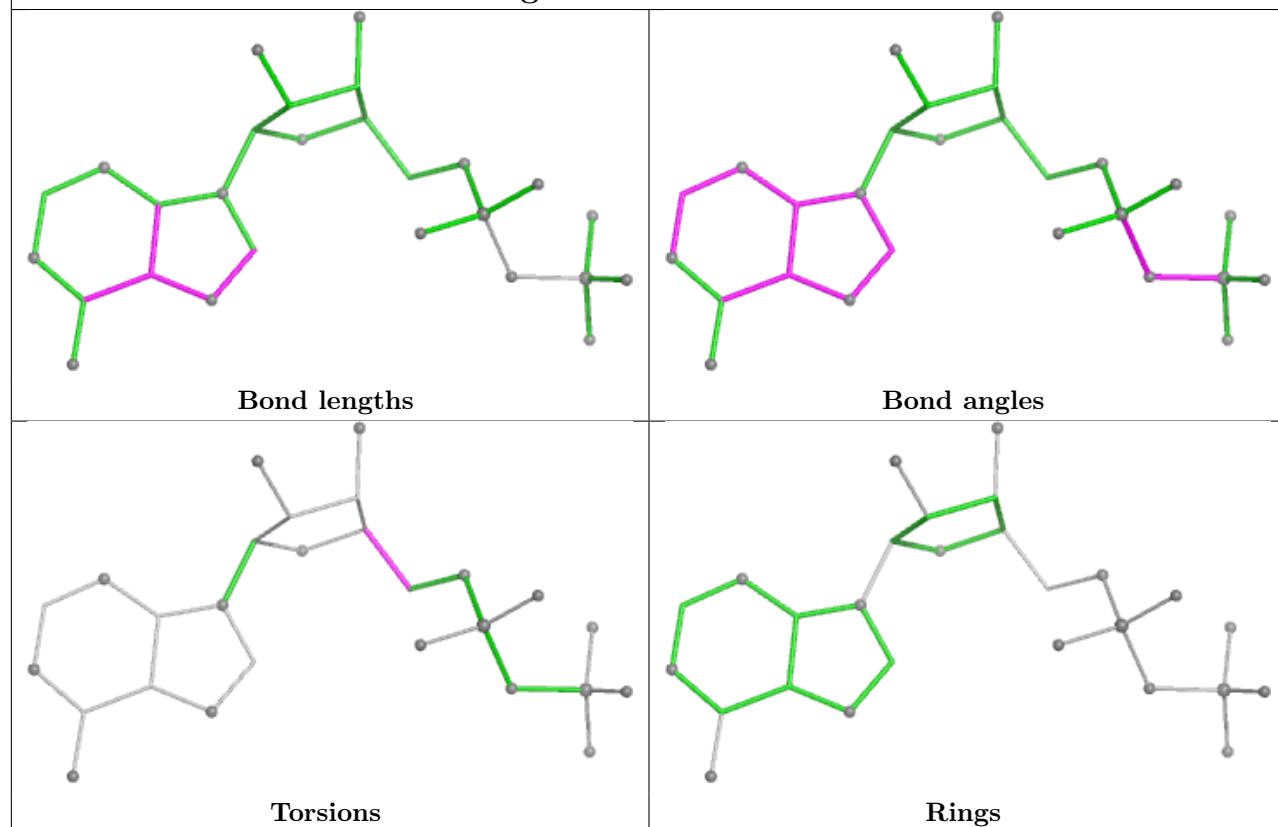
The following is a two-dimensional graphical depiction of Mogul quality analysis of bond lengths, bond angles, torsion angles, and ring geometry for all instances of the Ligand of Interest. In addition, ligands with molecular weight > 250 and outliers as shown on the validation Tables will also be included. For torsion angles, if less than 5% of the Mogul distribution of torsion angles is within 10 degrees of the torsion angle in question, then that torsion angle is considered an outlier. Any bond that is central to one or more torsion angles identified as an outlier by Mogul will be highlighted in the graph. For rings, the root-mean-square deviation (RMSD) between the ring in question and similar rings identified by Mogul is calculated over all ring torsion angles. If the average RMSD is greater than 60 degrees and the minimal RMSD between the ring in question and any Mogul-identified rings is also greater than 60 degrees, then that ring is considered an outlier. The outliers are highlighted in purple. The color gray indicates Mogul did not find sufficient equivalents in the CSD to analyse the geometry.



Ligand ADP D 1301



Ligand ADP C 1301



5.7 Other polymers

There are no such residues in this entry.

5.8 Polymer linkage issues

There are no chain breaks in this entry.

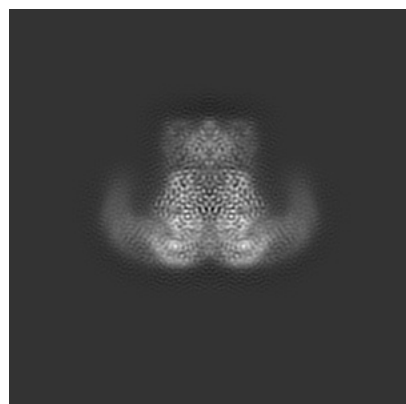
6 Map visualisation [i](#)

This section contains visualisations of the EMDB entry EMD-53235. These allow visual inspection of the internal detail of the map and identification of artifacts.

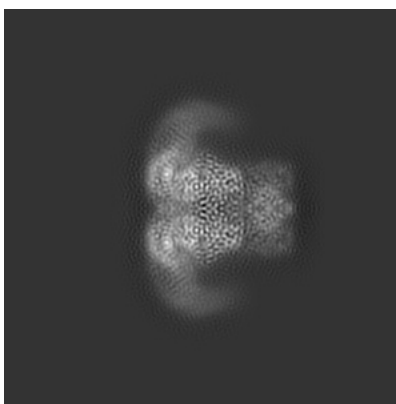
Images derived from a raw map, generated by summing the deposited half-maps, are presented below the corresponding image components of the primary map to allow further visual inspection and comparison with those of the primary map.

6.1 Orthogonal projections [i](#)

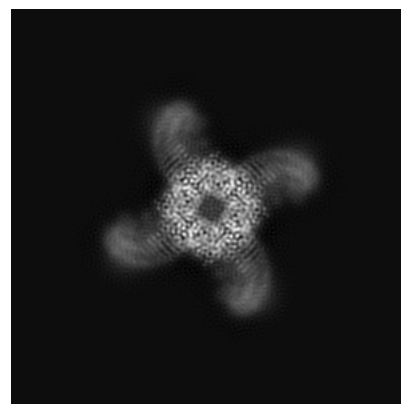
6.1.1 Primary map



X

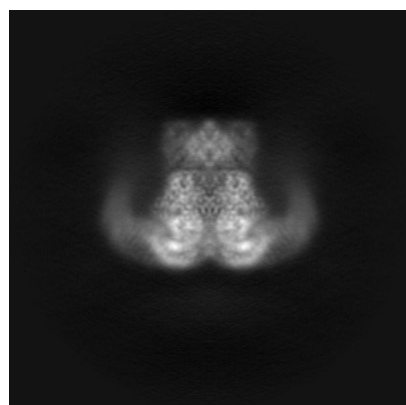


Y

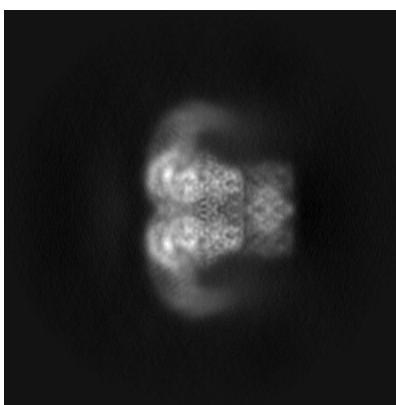


Z

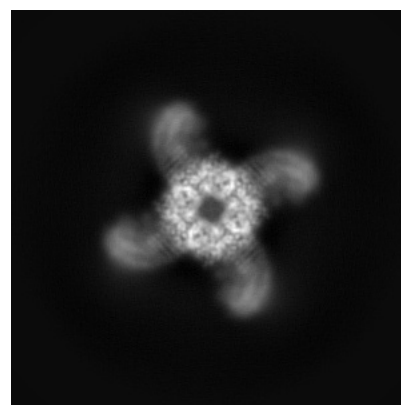
6.1.2 Raw map



X



Y

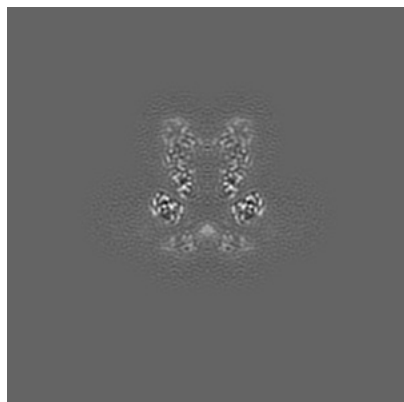


Z

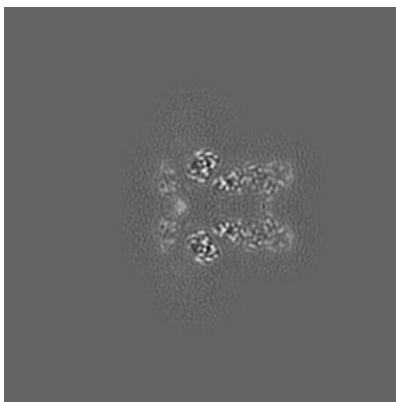
The images above show the map projected in three orthogonal directions.

6.2 Central slices [i](#)

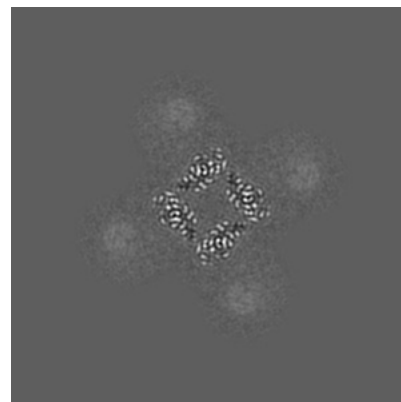
6.2.1 Primary map



X Index: 200

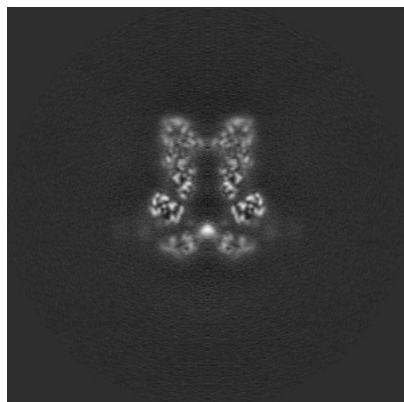


Y Index: 200

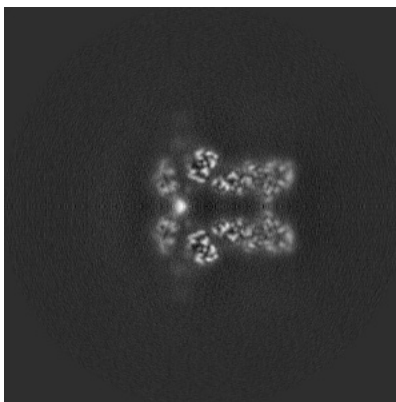


Z Index: 200

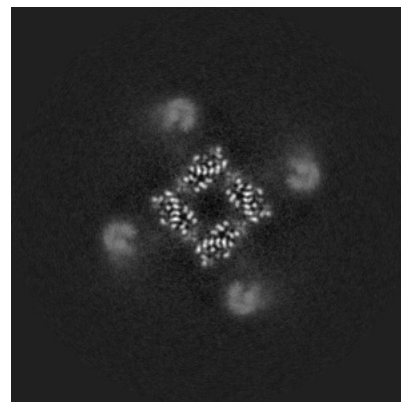
6.2.2 Raw map



X Index: 200



Y Index: 200

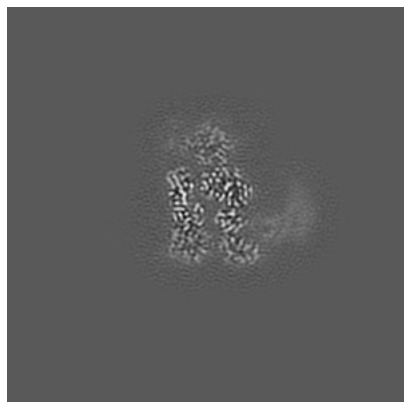


Z Index: 200

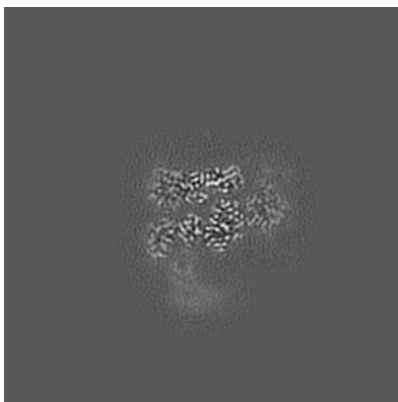
The images above show central slices of the map in three orthogonal directions.

6.3 Largest variance slices [i](#)

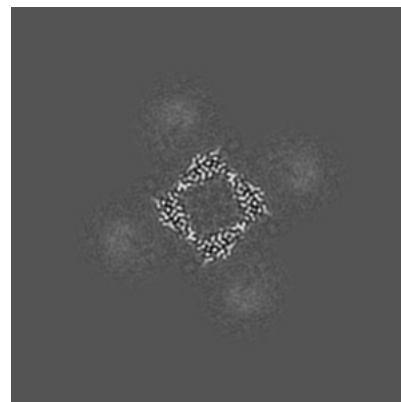
6.3.1 Primary map



X Index: 178

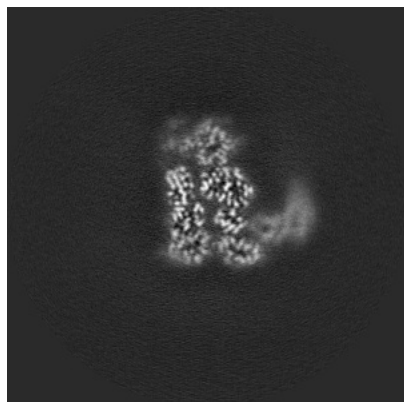


Y Index: 178

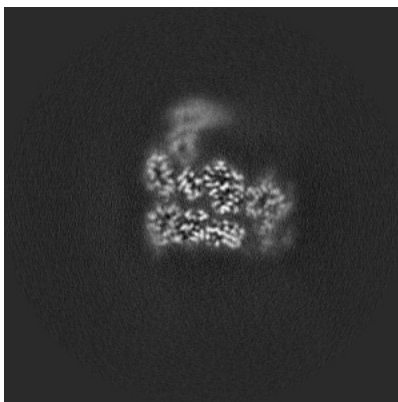


Z Index: 203

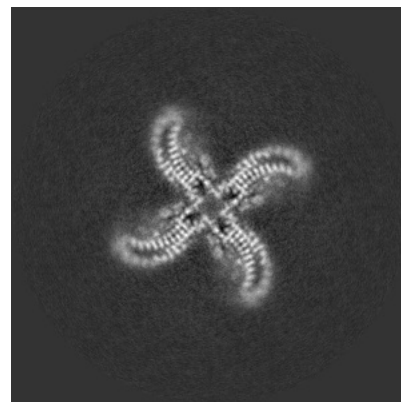
6.3.2 Raw map



X Index: 178



Y Index: 222

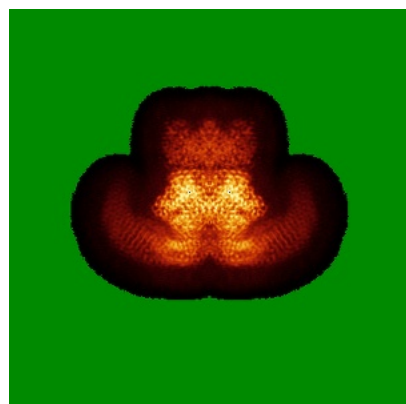


Z Index: 164

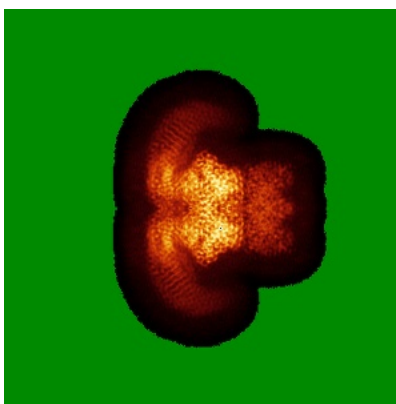
The images above show the largest variance slices of the map in three orthogonal directions.

6.4 Orthogonal standard-deviation projections (False-color) [i](#)

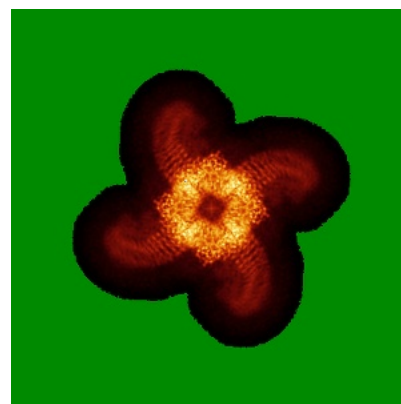
6.4.1 Primary map



X

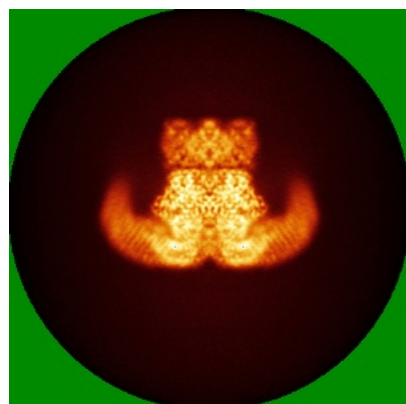


Y

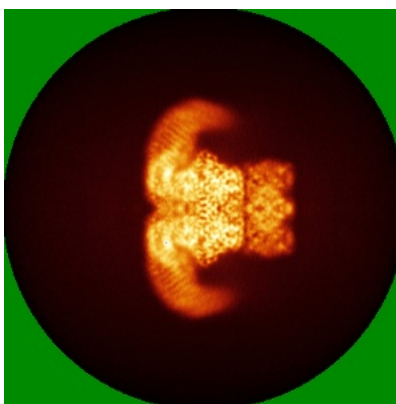


Z

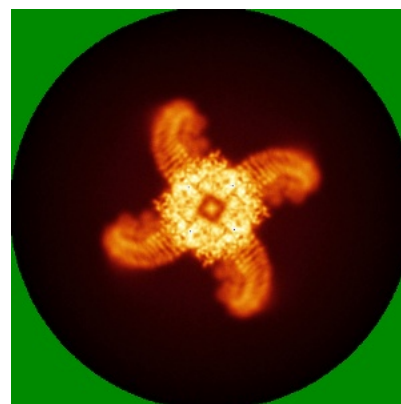
6.4.2 Raw map



X



Y



Z

The images above show the map standard deviation projections with false color in three orthogonal directions. Minimum values are shown in green, max in blue, and dark to light orange shades represent small to large values respectively.

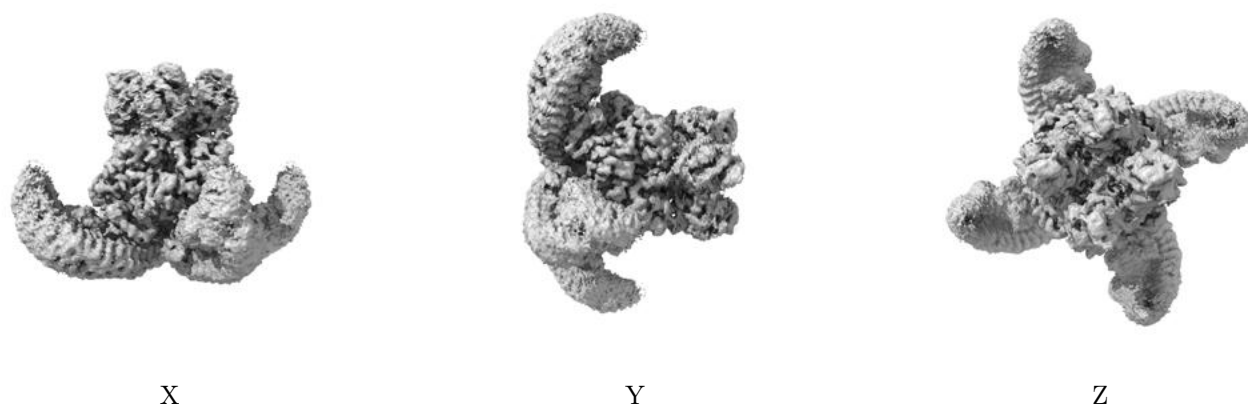
6.5 Orthogonal surface views [i](#)

6.5.1 Primary map



The images above show the 3D surface view of the map at the recommended contour level 0.009. These images, in conjunction with the slice images, may facilitate assessment of whether an appropriate contour level has been provided.

6.5.2 Raw map



These images show the 3D surface of the raw map. The raw map's contour level was selected so that its surface encloses the same volume as the primary map does at its recommended contour level.

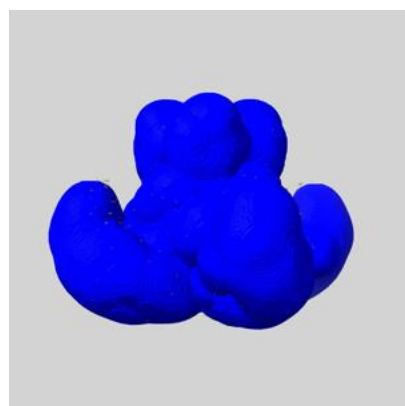
6.6 Mask visualisation [i](#)

This section shows the 3D surface view of the primary map at 50% transparency overlaid with the specified mask at 0% transparency

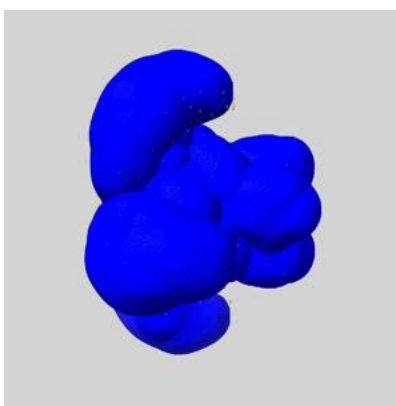
A mask typically either:

- Encompasses the whole structure
- Separates out a domain, a functional unit, a monomer or an area of interest from a larger structure

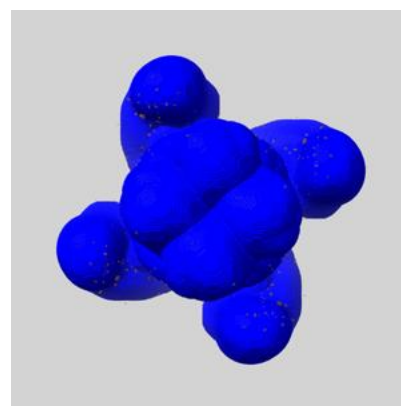
6.6.1 emd_53235_msk_1.map [i](#)



X



Y

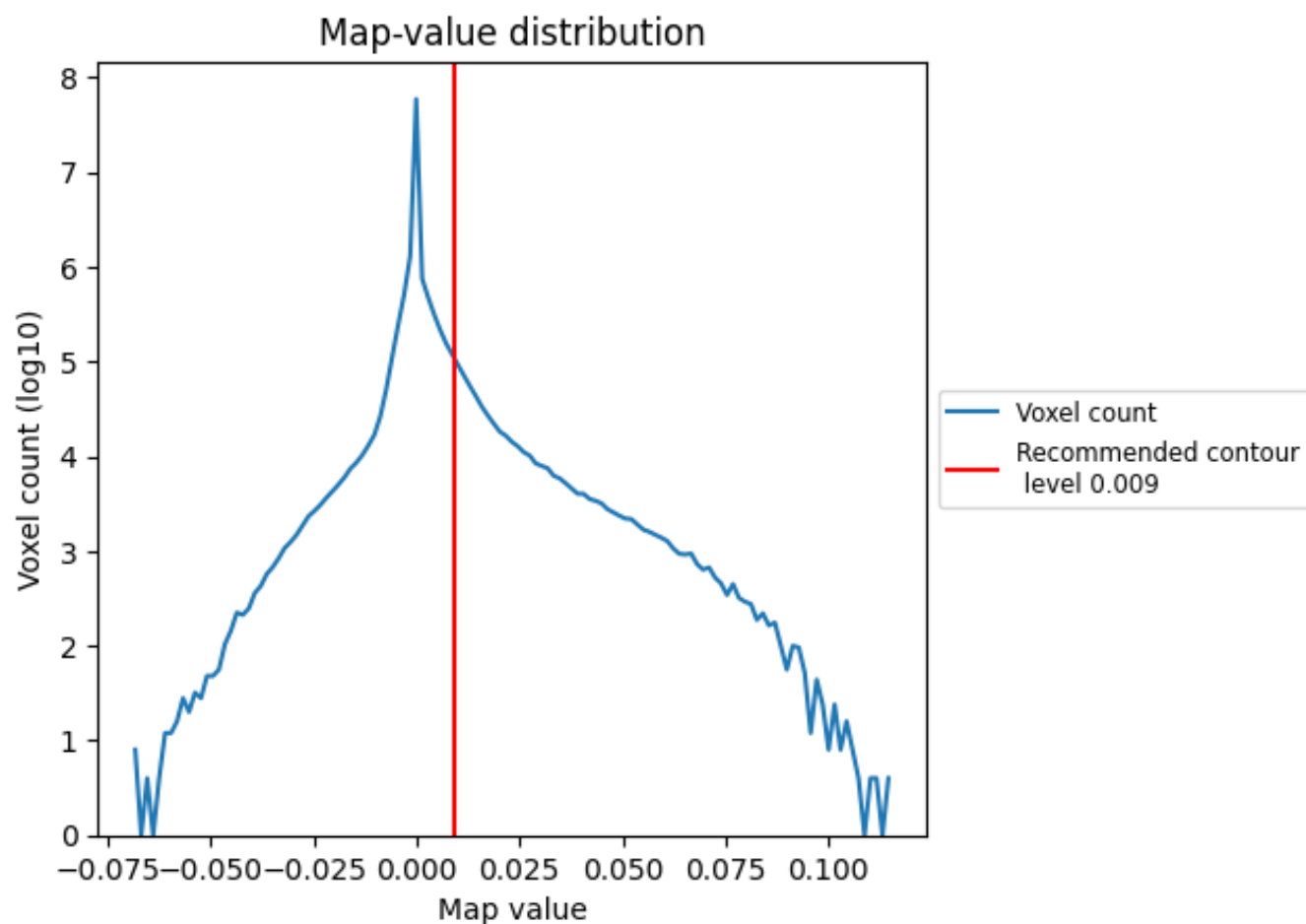


Z

7 Map analysis [i](#)

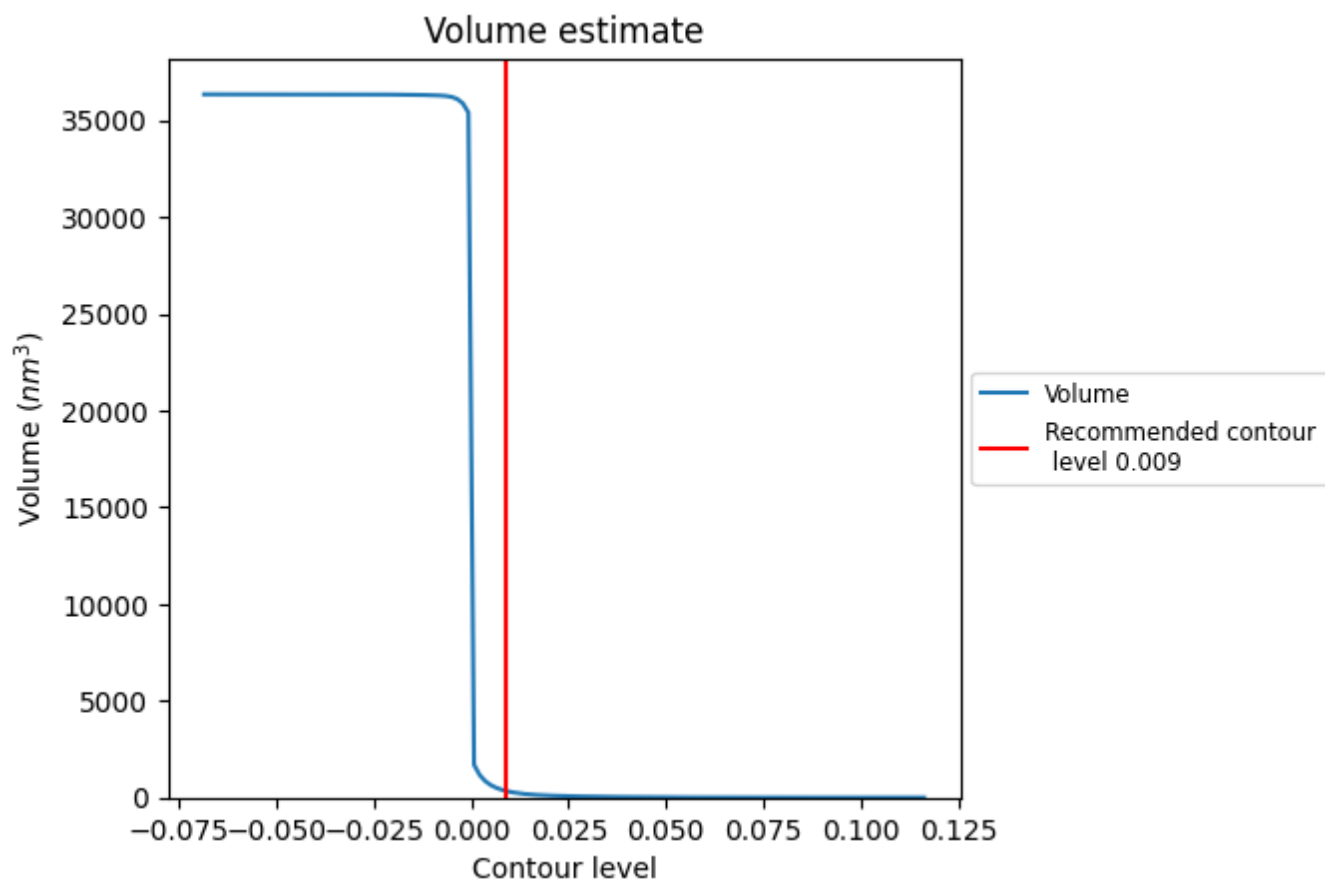
This section contains the results of statistical analysis of the map.

7.1 Map-value distribution [i](#)



The map-value distribution is plotted in 128 intervals along the x-axis. The y-axis is logarithmic. A spike in this graph at zero usually indicates that the volume has been masked.

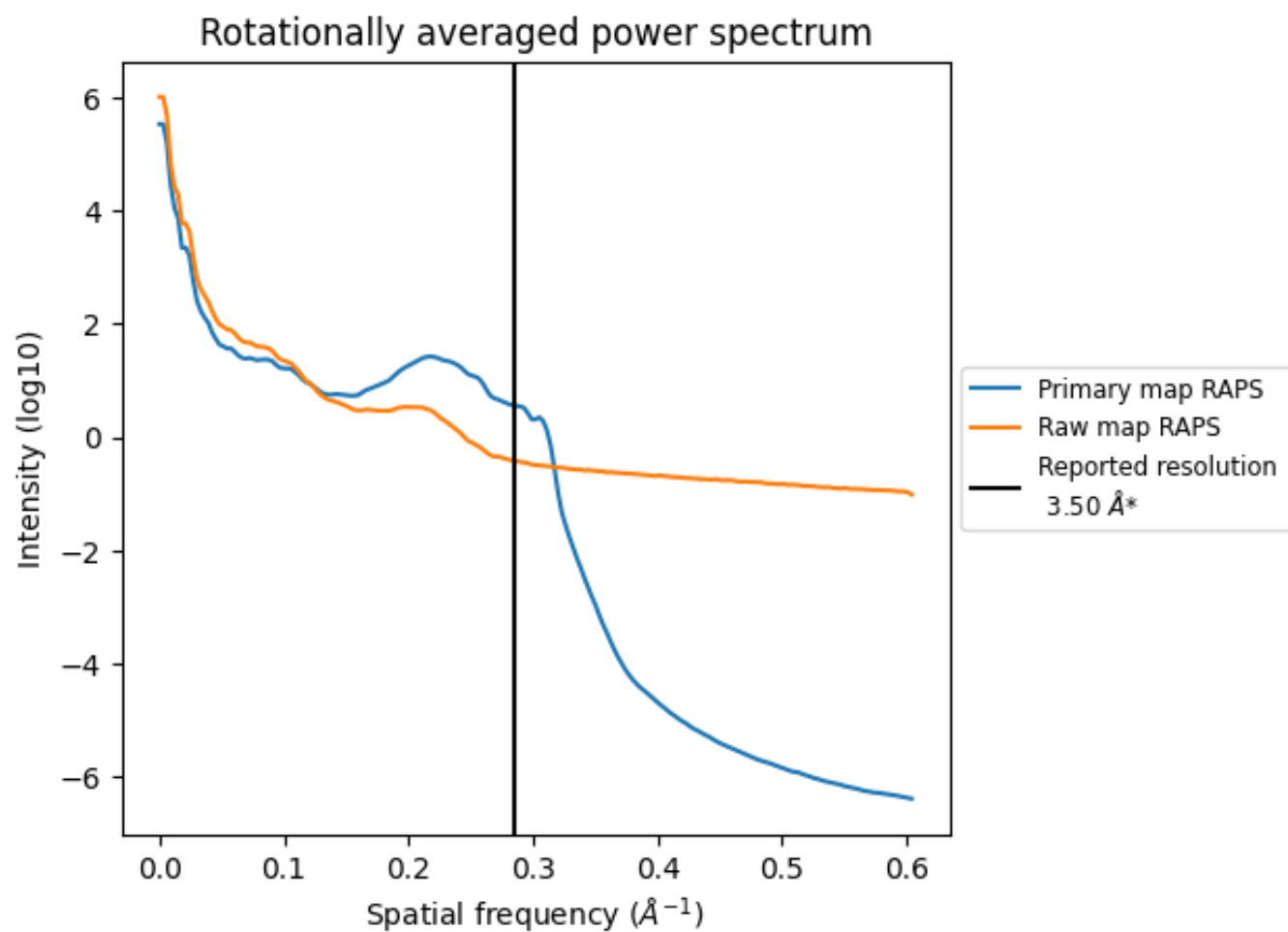
7.2 Volume estimate [i](#)



The volume at the recommended contour level is 345 nm^3 ; this corresponds to an approximate mass of 311 kDa.

The volume estimate graph shows how the enclosed volume varies with the contour level. The recommended contour level is shown as a vertical line and the intersection between the line and the curve gives the volume of the enclosed surface at the given level.

7.3 Rotationally averaged power spectrum ⓘ

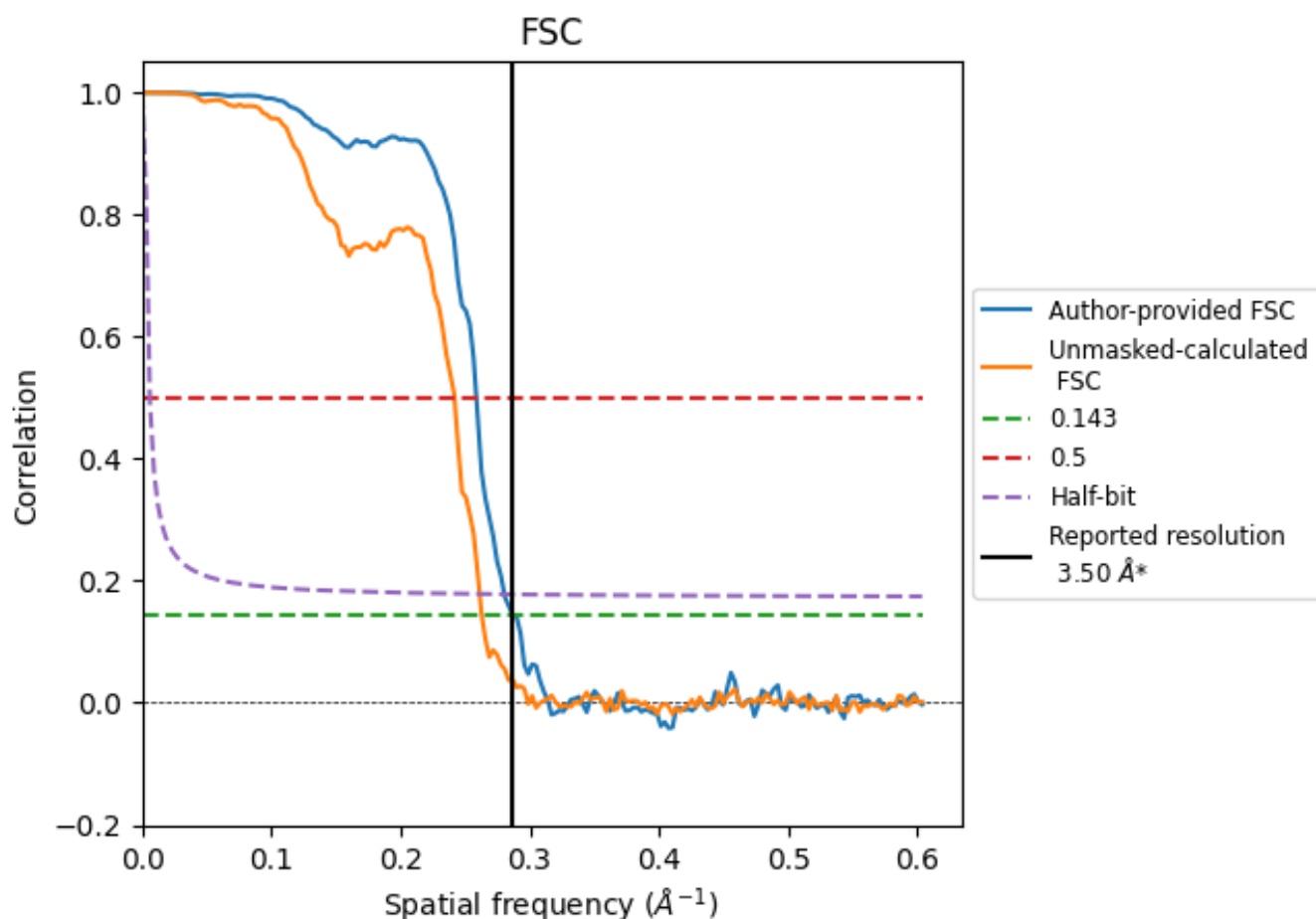


*Reported resolution corresponds to spatial frequency of 0.286 Å⁻¹

8 Fourier-Shell correlation [i](#)

Fourier-Shell Correlation (FSC) is the most commonly used method to estimate the resolution of single-particle and subtomogram-averaged maps. The shape of the curve depends on the imposed symmetry, mask and whether or not the two 3D reconstructions used were processed from a common reference. The reported resolution is shown as a black line. A curve is displayed for the half-bit criterion in addition to lines showing the 0.143 gold standard cut-off and 0.5 cut-off.

8.1 FSC [i](#)



*Reported resolution corresponds to spatial frequency of 0.286 \AA^{-1}

8.2 Resolution estimates [i](#)

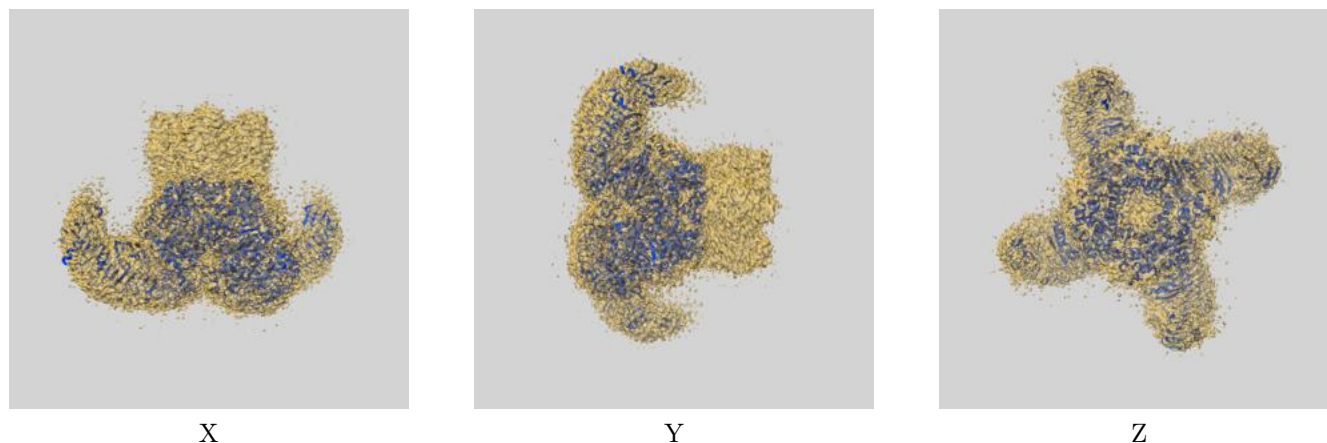
Resolution estimate (Å)	Estimation criterion (FSC cut-off)		
	0.143	0.5	Half-bit
Reported by author	3.50	-	-
Author-provided FSC curve	3.47	3.87	3.57
Unmasked-calculated*	3.80	4.14	3.83

*Resolution estimate based on FSC curve calculated by comparison of deposited half-maps.

9 Map-model fit [i](#)

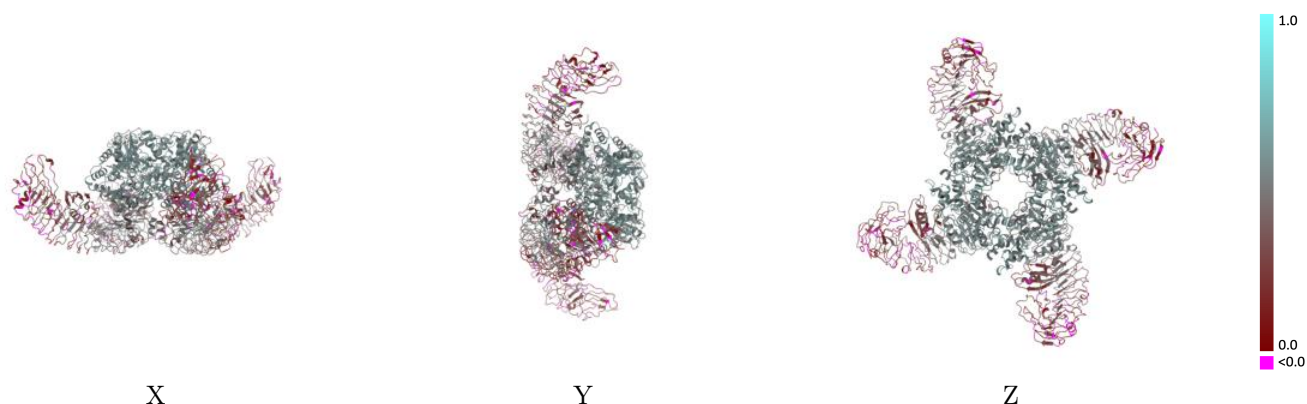
This section contains information regarding the fit between EMDB map EMD-53235 and PDB model 9QLV. Per-residue inclusion information can be found in section 3 on page 6.

9.1 Map-model overlay [i](#)



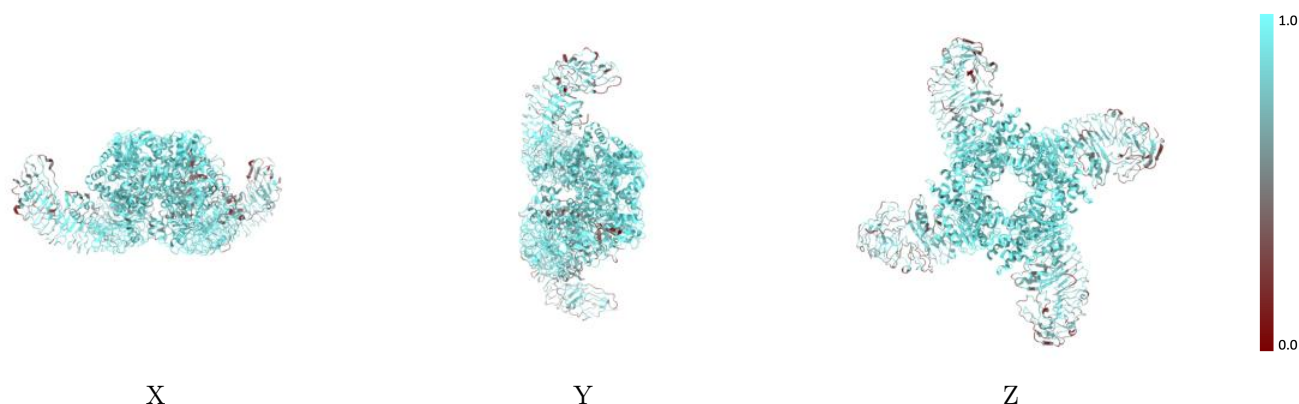
The images above show the 3D surface view of the map at the recommended contour level 0.009 at 50% transparency in yellow overlaid with a ribbon representation of the model coloured in blue. These images allow for the visual assessment of the quality of fit between the atomic model and the map.

9.2 Q-score mapped to coordinate model [i](#)



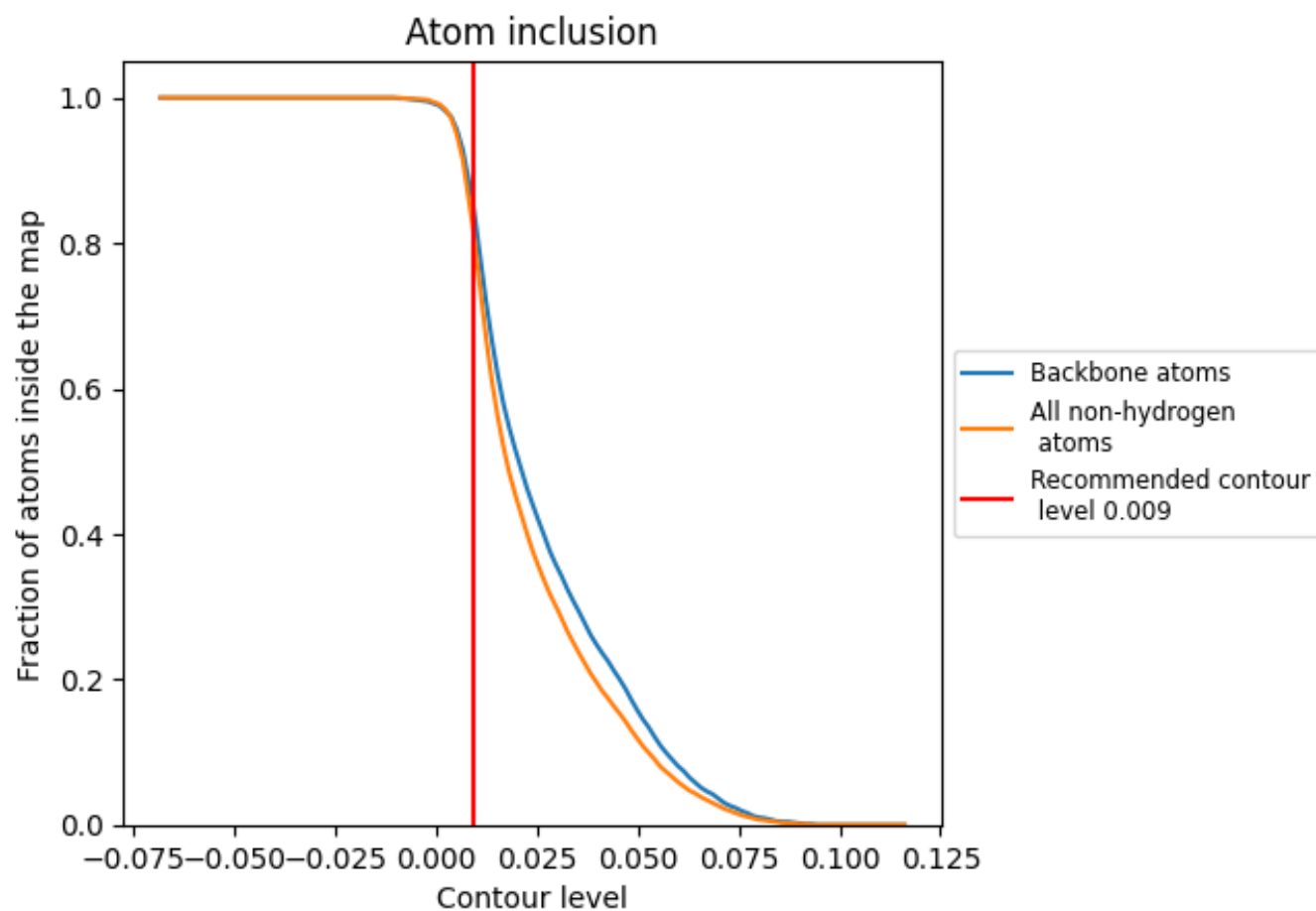
The images above show the model with each residue coloured according to its Q-score. This shows their resolvability in the map with higher Q-score values reflecting better resolvability. Please note: Q-score is calculating the resolvability of atoms, and thus high values are only expected at resolutions at which atoms can be resolved. Low Q-score values may therefore be expected for many entries.

9.3 Atom inclusion mapped to coordinate model [i](#)



The images above show the model with each residue coloured according to its atom inclusion. This shows to what extent they are inside the map at the recommended contour level (0.009).

9.4 Atom inclusion [i](#)



At the recommended contour level, 86% of all backbone atoms, 82% of all non-hydrogen atoms, are inside the map.

9.5 Map-model fit summary ⓘ

The table lists the average atom inclusion at the recommended contour level (0.009) and Q-score for the entire model and for each chain.

Chain	Atom inclusion	Q-score
All	<div><div></div></div> 0.8240	<div><div></div></div> 0.3870
A	<div><div></div></div> 0.8440	<div><div></div></div> 0.4050
B	<div><div></div></div> 0.8350	<div><div></div></div> 0.3990
C	<div><div></div></div> 0.8360	<div><div></div></div> 0.3950
D	<div><div></div></div> 0.8300	<div><div></div></div> 0.3930
P	<div><div></div></div> 0.6630	<div><div></div></div> 0.2230
Q	<div><div></div></div> 0.7210	<div><div></div></div> 0.3020
R	<div><div></div></div> 0.6910	<div><div></div></div> 0.2720
S	<div><div></div></div> 0.6960	<div><div></div></div> 0.2780

1.0

0.0

<0.0