



wwPDB X-ray Structure Validation Summary Report ⓘ

Jun 15, 2024 – 02:59 PM EDT

PDB ID : 2QGQ
Title : Crystal structure of TM_1862 from Thermotoga maritima. Northeast Structural Genomics Consortium target VR77
Authors : Forouhar, F.; Neely, H.; Hussain, M.; Seetharaman, J.; Fang, Y.; Chen, C.X.; Cunningham, K.; Conover, K.; Ma, L.-C.; Xiao, R.; Acton, T.B.; Montelione, G.T.; Tong, L.; Hunt, J.F.; Northeast Structural Genomics Consortium (NESG)
Deposited on : 2007-06-29
Resolution : 2.00 Å(reported)

This is a wwPDB X-ray Structure Validation Summary Report for a publicly released PDB entry.

We welcome your comments at validation@mail.wwpdb.org

A user guide is available at

<https://www.wwpdb.org/validation/2017/XrayValidationReportHelp>

with specific help available everywhere you see the ⓘ symbol.

The types of validation reports are described at

<https://www.wwpdb.org/validation/2017/FAQs#types>.

The following versions of software and data (see [references ⓘ](#)) were used in the production of this report:

MolProbity	:	4.02b-467
Mogul	:	2022.3.0, CSD as543be (2022)
Xtriage (Phenix)	:	1.20.1
EDS	:	2.37.1
Percentile statistics	:	20191225.v01 (using entries in the PDB archive December 25th 2019)
Refmac	:	5.8.0158
CCP4	:	7.0.044 (Gargrove)
Ideal geometry (proteins)	:	Engh & Huber (2001)
Ideal geometry (DNA, RNA)	:	Parkinson et al. (1996)

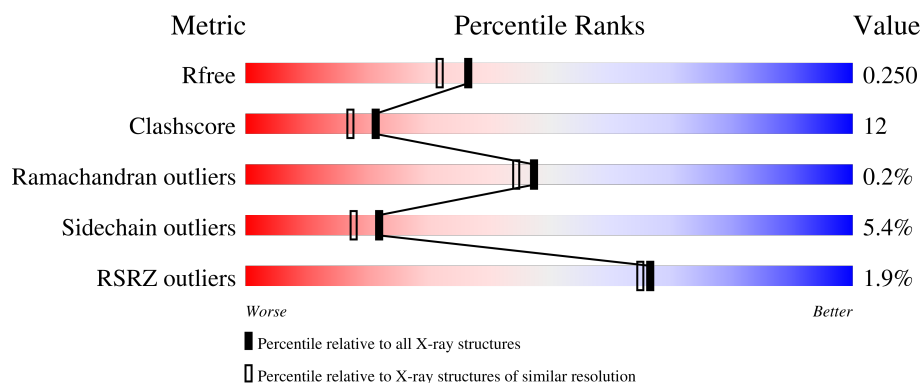
1 Overall quality at a glance

The following experimental techniques were used to determine the structure:

X-RAY DIFFRACTION

The reported resolution of this entry is 2.00 Å.

Percentile scores (ranging between 0-100) for global validation metrics of the entry are shown in the following graphic. The table shows the number of entries on which the scores are based.



Metric	Whole archive (#Entries)	Similar resolution (#Entries, resolution range(Å))
R_{free}	130704	8085 (2.00-2.00)
Clashscore	141614	9178 (2.00-2.00)
Ramachandran outliers	138981	9054 (2.00-2.00)
Sidechain outliers	138945	9053 (2.00-2.00)
RSRZ outliers	127900	7900 (2.00-2.00)

The table below summarises the geometric issues observed across the polymeric chains and their fit to the electron density. The red, orange, yellow and green segments of the lower bar indicate the fraction of residues that contain outliers for ≥ 3 , 2, 1 and 0 types of geometric quality criteria respectively. A grey segment represents the fraction of residues that are not modelled. The numeric value for each fraction is indicated below the corresponding segment, with a dot representing fractions $\leq 5\%$. The upper red bar (where present) indicates the fraction of residues that have poor fit to the electron density. The numeric value is given above the bar.

Mol	Chain	Length	Quality of chain
1	A	304	<div> <div>3%</div> <div>68%</div> <div>19%</div> <div>•</div> <div>11%</div> </div>
1	B	304	<div> <div>%</div> <div>65%</div> <div>21%</div> <div>•</div> <div>11%</div> </div>
1	C	304	<div> <div>3%</div> <div>63%</div> <div>22%</div> <div>•</div> <div>12%</div> </div>
1	D	304	<div> <div>63%</div> <div>23%</div> <div>•</div> <div>12%</div> </div>

Continued on next page...

Continued from previous page...

Mol	Chain	Length	Quality of chain
1	E	304	<div><div><div></div><div></div><div></div><div></div></div><div>3%</div><div>65%</div><div>22%</div><div>•</div><div>11%</div></div>
1	F	304	<div><div><div></div><div></div><div></div><div></div></div><div>%</div><div>65%</div><div>21%</div><div>•</div><div>12%</div></div>
1	G	304	<div><div><div></div><div></div><div></div><div></div></div><div>%</div><div>64%</div><div>22%</div><div>•</div><div>12%</div></div>
1	H	304	<div><div><div></div><div></div><div></div><div></div></div><div>2%</div><div>61%</div><div>25%</div><div>•</div><div>11%</div></div>

2 Entry composition [i](#)

There are 3 unique types of molecules in this entry. The entry contains 19066 atoms, of which 0 are hydrogens and 0 are deuteriums.

In the tables below, the ZeroOcc column contains the number of atoms modelled with zero occupancy, the AltConf column contains the number of residues with at least one atom in alternate conformation and the Trace column contains the number of residues modelled with at most 2 atoms.

- Molecule 1 is a protein called Protein TM_1862.

Mol	Chain	Residues	Atoms						ZeroOcc	AltConf	Trace
1	A	272	Total	C	N	O	S	Se	0	0	0
			2211	1413	371	420	1	6			
1	B	270	Total	C	N	O	Se		0	0	0
			2196	1405	369	416	6				
1	C	269	Total	C	N	O	Se		0	0	0
			2192	1403	368	415	6				
1	D	269	Total	C	N	O	Se		0	0	0
			2192	1403	368	415	6				
1	E	270	Total	C	N	O	Se		0	0	0
			2196	1405	369	416	6				
1	F	269	Total	C	N	O	Se		0	0	0
			2192	1403	368	415	6				
1	G	269	Total	C	N	O	Se		0	0	0
			2192	1403	368	415	6				
1	H	270	Total	C	N	O	Se		0	0	0
			2196	1405	369	416	6				

There are 112 discrepancies between the modelled and reference sequences:

Chain	Residue	Modelled	Actual	Comment	Reference
A	226	MSE	MET	MODIFIED RESIDUE	UNP Q9X2H6
A	241	MSE	MET	MODIFIED RESIDUE	UNP Q9X2H6
A	266	MSE	MET	MODIFIED RESIDUE	UNP Q9X2H6
A	278	MSE	MET	MODIFIED RESIDUE	UNP Q9X2H6
A	346	MSE	MET	MODIFIED RESIDUE	UNP Q9X2H6
A	425	MSE	MET	MODIFIED RESIDUE	UNP Q9X2H6
A	431	LEU	-	CLONING ARTIFACT	UNP Q9X2H6
A	432	GLU	-	CLONING ARTIFACT	UNP Q9X2H6
A	433	HIS	-	CLONING ARTIFACT	UNP Q9X2H6
A	434	HIS	-	CLONING ARTIFACT	UNP Q9X2H6
A	435	HIS	-	CLONING ARTIFACT	UNP Q9X2H6
A	436	HIS	-	CLONING ARTIFACT	UNP Q9X2H6
A	437	HIS	-	CLONING ARTIFACT	UNP Q9X2H6

Continued on next page...

Continued from previous page...

Chain	Residue	Modelled	Actual	Comment	Reference
A	438	HIS	-	CLONING ARTIFACT	UNP Q9X2H6
B	226	MSE	MET	MODIFIED RESIDUE	UNP Q9X2H6
B	241	MSE	MET	MODIFIED RESIDUE	UNP Q9X2H6
B	266	MSE	MET	MODIFIED RESIDUE	UNP Q9X2H6
B	278	MSE	MET	MODIFIED RESIDUE	UNP Q9X2H6
B	346	MSE	MET	MODIFIED RESIDUE	UNP Q9X2H6
B	425	MSE	MET	MODIFIED RESIDUE	UNP Q9X2H6
B	431	LEU	-	CLONING ARTIFACT	UNP Q9X2H6
B	432	GLU	-	CLONING ARTIFACT	UNP Q9X2H6
B	433	HIS	-	CLONING ARTIFACT	UNP Q9X2H6
B	434	HIS	-	CLONING ARTIFACT	UNP Q9X2H6
B	435	HIS	-	CLONING ARTIFACT	UNP Q9X2H6
B	436	HIS	-	CLONING ARTIFACT	UNP Q9X2H6
B	437	HIS	-	CLONING ARTIFACT	UNP Q9X2H6
B	438	HIS	-	CLONING ARTIFACT	UNP Q9X2H6
C	226	MSE	MET	MODIFIED RESIDUE	UNP Q9X2H6
C	241	MSE	MET	MODIFIED RESIDUE	UNP Q9X2H6
C	266	MSE	MET	MODIFIED RESIDUE	UNP Q9X2H6
C	278	MSE	MET	MODIFIED RESIDUE	UNP Q9X2H6
C	346	MSE	MET	MODIFIED RESIDUE	UNP Q9X2H6
C	425	MSE	MET	MODIFIED RESIDUE	UNP Q9X2H6
C	431	LEU	-	CLONING ARTIFACT	UNP Q9X2H6
C	432	GLU	-	CLONING ARTIFACT	UNP Q9X2H6
C	433	HIS	-	CLONING ARTIFACT	UNP Q9X2H6
C	434	HIS	-	CLONING ARTIFACT	UNP Q9X2H6
C	435	HIS	-	CLONING ARTIFACT	UNP Q9X2H6
C	436	HIS	-	CLONING ARTIFACT	UNP Q9X2H6
C	437	HIS	-	CLONING ARTIFACT	UNP Q9X2H6
C	438	HIS	-	CLONING ARTIFACT	UNP Q9X2H6
D	226	MSE	MET	MODIFIED RESIDUE	UNP Q9X2H6
D	241	MSE	MET	MODIFIED RESIDUE	UNP Q9X2H6
D	266	MSE	MET	MODIFIED RESIDUE	UNP Q9X2H6
D	278	MSE	MET	MODIFIED RESIDUE	UNP Q9X2H6
D	346	MSE	MET	MODIFIED RESIDUE	UNP Q9X2H6
D	425	MSE	MET	MODIFIED RESIDUE	UNP Q9X2H6
D	431	LEU	-	CLONING ARTIFACT	UNP Q9X2H6
D	432	GLU	-	CLONING ARTIFACT	UNP Q9X2H6
D	433	HIS	-	CLONING ARTIFACT	UNP Q9X2H6
D	434	HIS	-	CLONING ARTIFACT	UNP Q9X2H6
D	435	HIS	-	CLONING ARTIFACT	UNP Q9X2H6
D	436	HIS	-	CLONING ARTIFACT	UNP Q9X2H6
D	437	HIS	-	CLONING ARTIFACT	UNP Q9X2H6

Continued on next page...

Continued from previous page...

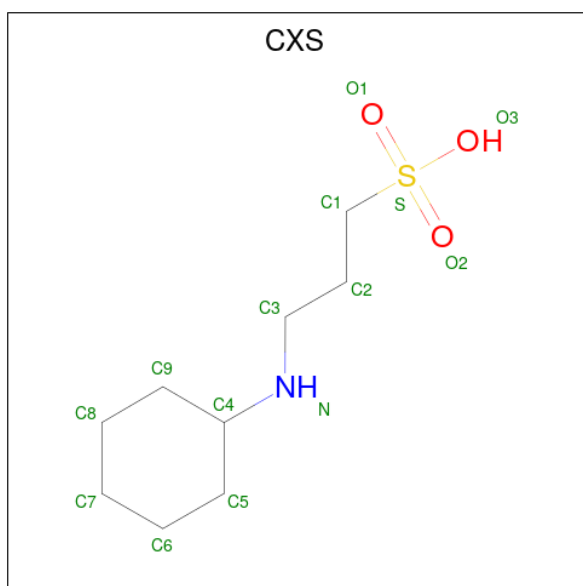
Chain	Residue	Modelled	Actual	Comment	Reference
D	438	HIS	-	CLONING ARTIFACT	UNP Q9X2H6
E	226	MSE	MET	MODIFIED RESIDUE	UNP Q9X2H6
E	241	MSE	MET	MODIFIED RESIDUE	UNP Q9X2H6
E	266	MSE	MET	MODIFIED RESIDUE	UNP Q9X2H6
E	278	MSE	MET	MODIFIED RESIDUE	UNP Q9X2H6
E	346	MSE	MET	MODIFIED RESIDUE	UNP Q9X2H6
E	425	MSE	MET	MODIFIED RESIDUE	UNP Q9X2H6
E	431	LEU	-	CLONING ARTIFACT	UNP Q9X2H6
E	432	GLU	-	CLONING ARTIFACT	UNP Q9X2H6
E	433	HIS	-	CLONING ARTIFACT	UNP Q9X2H6
E	434	HIS	-	CLONING ARTIFACT	UNP Q9X2H6
E	435	HIS	-	CLONING ARTIFACT	UNP Q9X2H6
E	436	HIS	-	CLONING ARTIFACT	UNP Q9X2H6
E	437	HIS	-	CLONING ARTIFACT	UNP Q9X2H6
E	438	HIS	-	CLONING ARTIFACT	UNP Q9X2H6
F	226	MSE	MET	MODIFIED RESIDUE	UNP Q9X2H6
F	241	MSE	MET	MODIFIED RESIDUE	UNP Q9X2H6
F	266	MSE	MET	MODIFIED RESIDUE	UNP Q9X2H6
F	278	MSE	MET	MODIFIED RESIDUE	UNP Q9X2H6
F	346	MSE	MET	MODIFIED RESIDUE	UNP Q9X2H6
F	425	MSE	MET	MODIFIED RESIDUE	UNP Q9X2H6
F	431	LEU	-	CLONING ARTIFACT	UNP Q9X2H6
F	432	GLU	-	CLONING ARTIFACT	UNP Q9X2H6
F	433	HIS	-	CLONING ARTIFACT	UNP Q9X2H6
F	434	HIS	-	CLONING ARTIFACT	UNP Q9X2H6
F	435	HIS	-	CLONING ARTIFACT	UNP Q9X2H6
F	436	HIS	-	CLONING ARTIFACT	UNP Q9X2H6
F	437	HIS	-	CLONING ARTIFACT	UNP Q9X2H6
F	438	HIS	-	CLONING ARTIFACT	UNP Q9X2H6
G	226	MSE	MET	MODIFIED RESIDUE	UNP Q9X2H6
G	241	MSE	MET	MODIFIED RESIDUE	UNP Q9X2H6
G	266	MSE	MET	MODIFIED RESIDUE	UNP Q9X2H6
G	278	MSE	MET	MODIFIED RESIDUE	UNP Q9X2H6
G	346	MSE	MET	MODIFIED RESIDUE	UNP Q9X2H6
G	425	MSE	MET	MODIFIED RESIDUE	UNP Q9X2H6
G	431	LEU	-	CLONING ARTIFACT	UNP Q9X2H6
G	432	GLU	-	CLONING ARTIFACT	UNP Q9X2H6
G	433	HIS	-	CLONING ARTIFACT	UNP Q9X2H6
G	434	HIS	-	CLONING ARTIFACT	UNP Q9X2H6
G	435	HIS	-	CLONING ARTIFACT	UNP Q9X2H6
G	436	HIS	-	CLONING ARTIFACT	UNP Q9X2H6
G	437	HIS	-	CLONING ARTIFACT	UNP Q9X2H6

Continued on next page...

Continued from previous page...

Chain	Residue	Modelled	Actual	Comment	Reference
G	438	HIS	-	CLONING ARTIFACT	UNP Q9X2H6
H	226	MSE	MET	MODIFIED RESIDUE	UNP Q9X2H6
H	241	MSE	MET	MODIFIED RESIDUE	UNP Q9X2H6
H	266	MSE	MET	MODIFIED RESIDUE	UNP Q9X2H6
H	278	MSE	MET	MODIFIED RESIDUE	UNP Q9X2H6
H	346	MSE	MET	MODIFIED RESIDUE	UNP Q9X2H6
H	425	MSE	MET	MODIFIED RESIDUE	UNP Q9X2H6
H	431	LEU	-	CLONING ARTIFACT	UNP Q9X2H6
H	432	GLU	-	CLONING ARTIFACT	UNP Q9X2H6
H	433	HIS	-	CLONING ARTIFACT	UNP Q9X2H6
H	434	HIS	-	CLONING ARTIFACT	UNP Q9X2H6
H	435	HIS	-	CLONING ARTIFACT	UNP Q9X2H6
H	436	HIS	-	CLONING ARTIFACT	UNP Q9X2H6
H	437	HIS	-	CLONING ARTIFACT	UNP Q9X2H6
H	438	HIS	-	CLONING ARTIFACT	UNP Q9X2H6

- Molecule 2 is 3-CYCLOHEXYL-1-PROPYLSULFONIC ACID (three-letter code: CXS) (formula: $C_9H_{19}NO_3S$).



Mol	Chain	Residues	Atoms					ZeroOcc	AltConf
2	A	1	Total	C	N	O	S	0	0
			14	9	1	3	1		
2	B	1	Total	C	N	O	S	0	0
			14	9	1	3	1		
2	D	1	Total	C	N	O	S	0	0
			14	9	1	3	1		

Continued on next page...

Continued from previous page...

Mol	Chain	Residues	Atoms					ZeroOcc	AltConf
2	F	1	Total	C	N	O	S	0	0
			14	9	1	3	1		

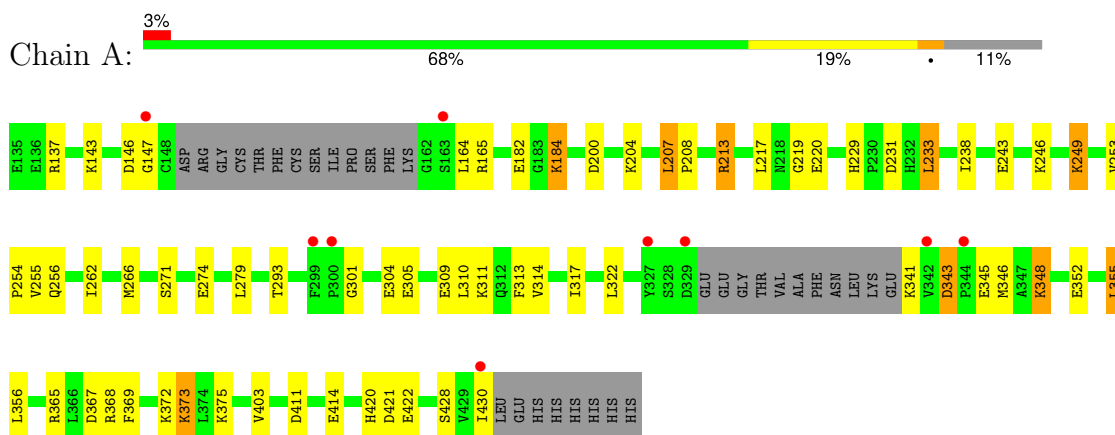
- Molecule 3 is water.

Mol	Chain	Residues	Atoms		ZeroOcc	AltConf
3	A	154	Total	O	0	0
			154	154		
3	B	219	Total	O	0	0
			219	219		
3	C	135	Total	O	0	0
			135	135		
3	D	211	Total	O	0	0
			211	211		
3	E	156	Total	O	0	0
			156	156		
3	F	205	Total	O	0	1
			206	206		
3	G	203	Total	O	0	0
			203	203		
3	H	159	Total	O	0	0
			159	159		

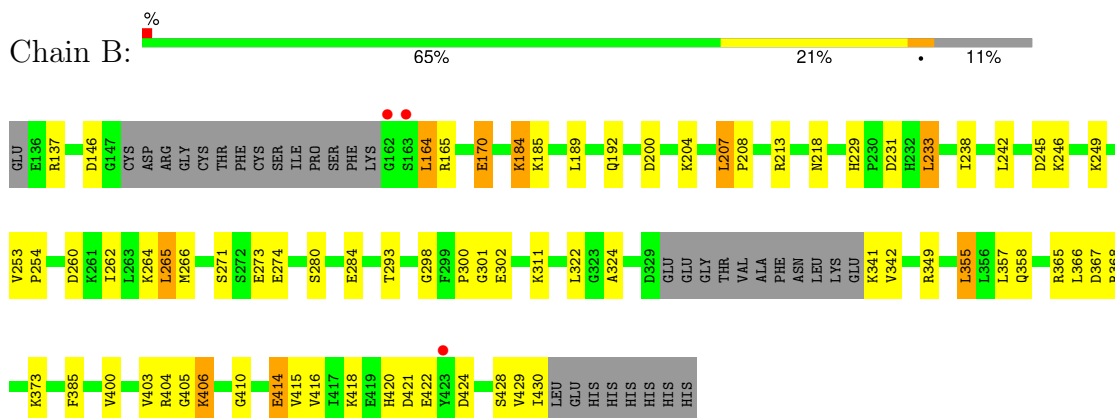
3 Residue-property plots

These plots are drawn for all protein, RNA, DNA and oligosaccharide chains in the entry. The first graphic for a chain summarises the proportions of the various outlier classes displayed in the second graphic. The second graphic shows the sequence view annotated by issues in geometry and electron density. Residues are color-coded according to the number of geometric quality criteria for which they contain at least one outlier: green = 0, yellow = 1, orange = 2 and red = 3 or more. A red dot above a residue indicates a poor fit to the electron density ($RSRZ > 2$). Stretches of 2 or more consecutive residues without any outlier are shown as a green connector. Residues present in the sample, but not in the model, are shown in grey.

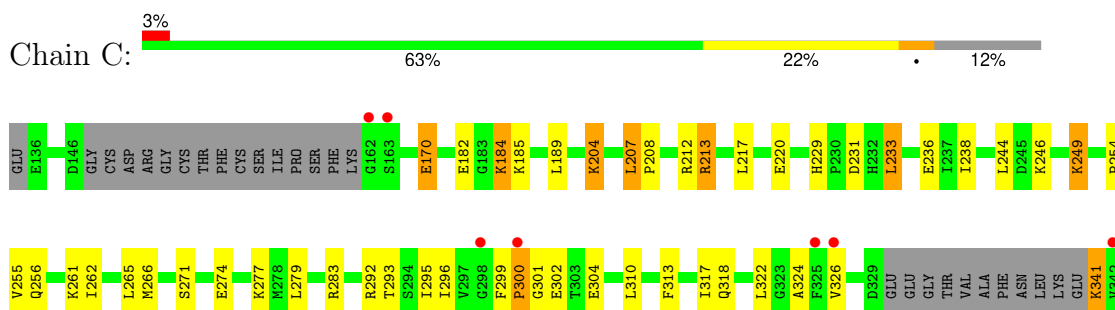
• Molecule 1: Protein TM_1862



• Molecule 1: Protein TM_1862

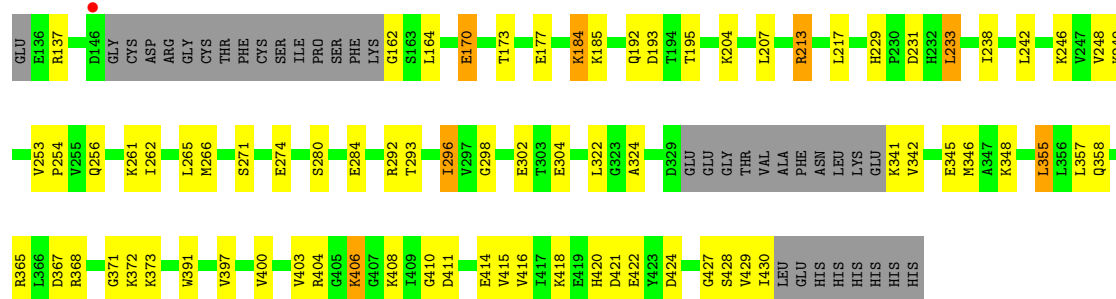


• Molecule 1: Protein TM_1862

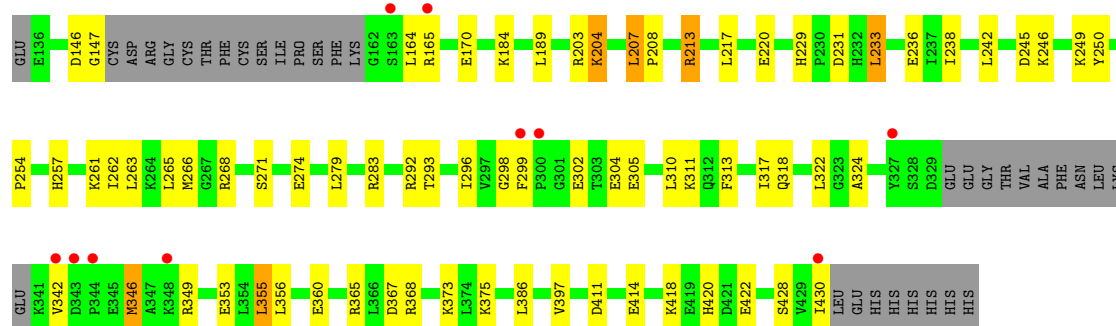




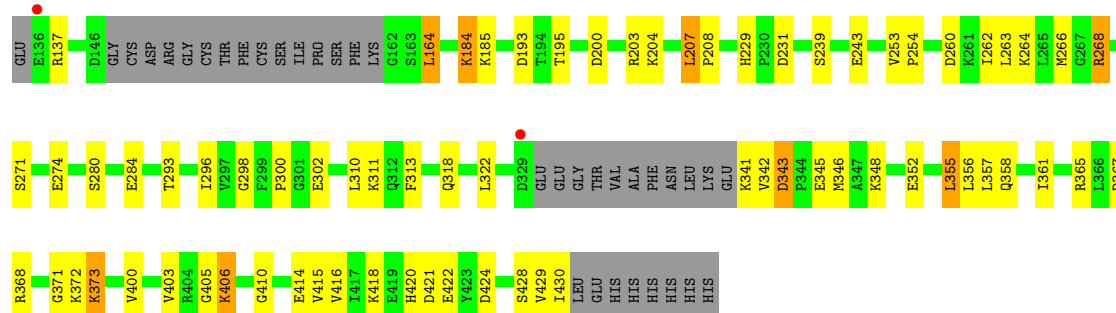
• Molecule 1: Protein TM_1862



• Molecule 1: Protein TM_1862

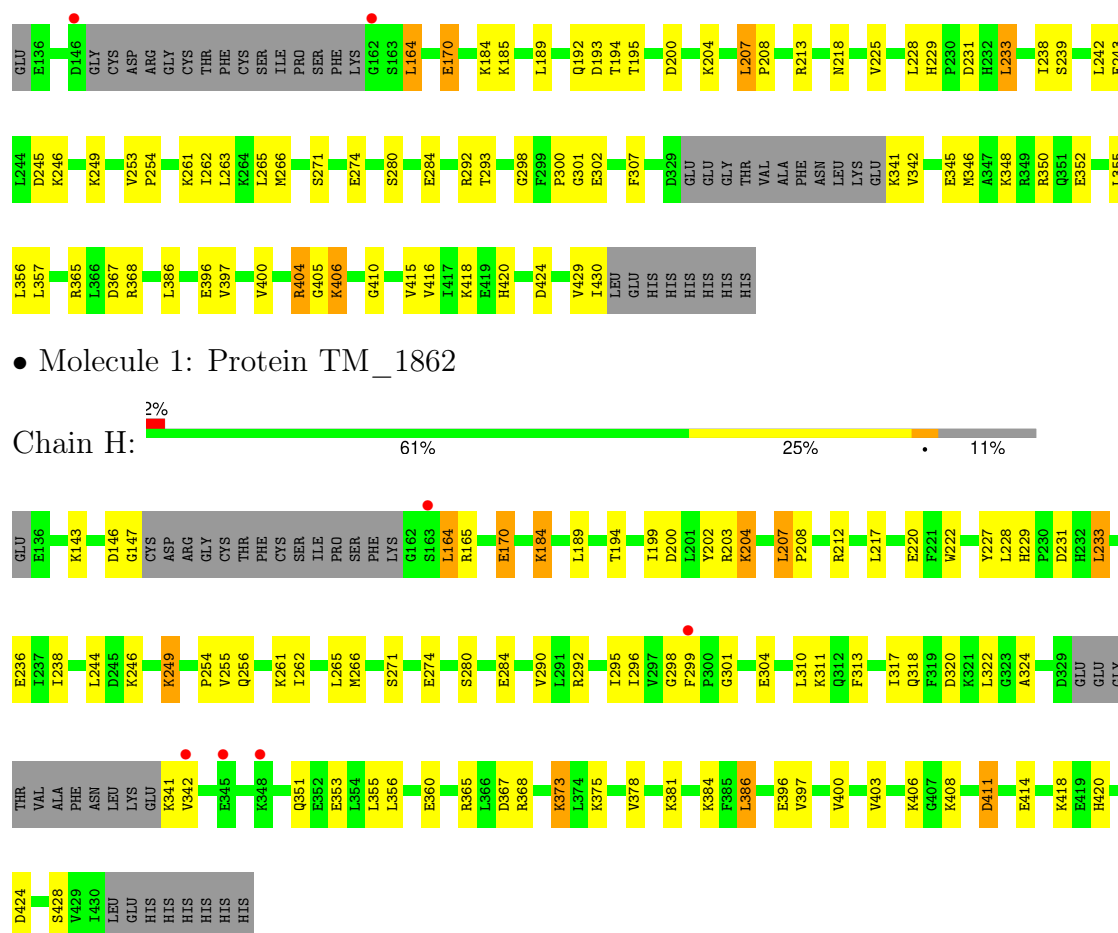


• Molecule 1: Protein TM_1862



• Molecule 1: Protein TM_1862





• Molecule 1: Protein TM_1862

4 Data and refinement statistics

Property	Value	Source
Space group	P 1	Depositor
Cell constants a, b, c, α , β , γ	88.62Å 88.65Å 96.04Å 89.98° 90.03° 89.91°	Depositor
Resolution (Å)	39.67 – 2.00 39.67 – 1.99	Depositor EDS
% Data completeness (in resolution range)	86.6 (39.67-2.00) 96.2 (39.67-1.99)	Depositor EDS
R_{merge}	0.07	Depositor
R_{sym}	0.05	Depositor
$\langle I/\sigma(I) \rangle$ ¹	3.84 (at 2.00Å)	Xtriage
Refinement program	CNS 1.1	Depositor
R, R_{free}	0.212 , 0.251 0.213 , 0.250	Depositor DCC
R_{free} test set	36809 reflections (9.56%)	wwPDB-VP
Wilson B-factor (Å ²)	20.0	Xtriage
Anisotropy	0.016	Xtriage
Bulk solvent k_{sol} (e/Å ³), B_{sol} (Å ²)	0.35 , 34.4	EDS
L-test for twinning ²	$\langle L \rangle = 0.49$, $\langle L^2 \rangle = 0.32$	Xtriage
Estimated twinning fraction	0.017 for -k,h,l 0.017 for k,-h,l 0.017 for h,-k,-l 0.017 for -h,k,-l 0.467 for -h,-k,l 0.459 for -k,-h,-l 0.460 for k,h,-l	Xtriage
F_o, F_c correlation	0.94	EDS
Total number of atoms	19066	wwPDB-VP
Average B, all atoms (Å ²)	25.0	wwPDB-VP

Xtriage's analysis on translational NCS is as follows: *The largest off-origin peak in the Patterson function is 3.99% of the height of the origin peak. No significant pseudotranslation is detected.*

¹Intensities estimated from amplitudes.

²Theoretical values of $\langle |L| \rangle$, $\langle L^2 \rangle$ for acentric reflections are 0.5, 0.333 respectively for untwinned datasets, and 0.375, 0.2 for perfectly twinned datasets.

5 Model quality

5.1 Standard geometry

Bond lengths and bond angles in the following residue types are not validated in this section: CXS

The Z score for a bond length (or angle) is the number of standard deviations the observed value is removed from the expected value. A bond length (or angle) with $|Z| > 5$ is considered an outlier worth inspection. RMSZ is the root-mean-square of all Z scores of the bond lengths (or angles).

Mol	Chain	Bond lengths		Bond angles	
		RMSZ	$\# Z > 5$	RMSZ	$\# Z > 5$
1	A	0.32	0/2241	0.53	0/2997
1	B	0.34	0/2226	0.58	0/2977
1	C	0.32	0/2222	0.53	0/2972
1	D	0.35	0/2222	0.57	0/2972
1	E	0.32	0/2226	0.53	0/2977
1	F	0.35	0/2222	0.57	0/2972
1	G	0.35	0/2222	0.57	0/2972
1	H	0.32	0/2226	0.53	0/2977
All	All	0.33	0/17807	0.55	0/23816

Chiral center outliers are detected by calculating the chiral volume of a chiral center and verifying if the center is modelled as a planar moiety or with the opposite hand. A planarity outlier is detected by checking planarity of atoms in a peptide group, atoms in a mainchain group or atoms of a sidechain that are expected to be planar.

Mol	Chain	#Chirality outliers	#Planarity outliers
1	E	0	1

There are no bond length outliers.

There are no bond angle outliers.

There are no chirality outliers.

All (1) planarity outliers are listed below:

Mol	Chain	Res	Type	Group
1	E	250	TYR	Sidechain

5.2 Too-close contacts ⓘ

In the following table, the Non-H and H(model) columns list the number of non-hydrogen atoms and hydrogen atoms in the chain respectively. The H(added) column lists the number of hydrogen atoms added and optimized by MolProbity. The Clashes column lists the number of clashes within the asymmetric unit, whereas Symm-Clashes lists symmetry-related clashes.

Mol	Chain	Non-H	H(model)	H(added)	Clashes	Symm-Clashes
1	A	2211	0	2236	42	0
1	B	2196	0	2225	59	0
1	C	2192	0	2222	59	0
1	D	2192	0	2222	54	0
1	E	2196	0	2225	57	0
1	F	2192	0	2222	60	0
1	G	2192	0	2222	56	0
1	H	2196	0	2225	61	0
2	A	14	0	19	0	0
2	B	14	0	19	1	0
2	D	14	0	19	0	0
2	F	14	0	19	0	0
3	A	154	0	0	4	0
3	B	219	0	0	6	0
3	C	135	0	0	4	0
3	D	211	0	0	6	0
3	E	156	0	0	3	0
3	F	206	0	0	5	0
3	G	203	0	0	4	0
3	H	159	0	0	6	0
All	All	19066	0	17875	426	0

The all-atom clashscore is defined as the number of clashes found per 1000 atoms (including hydrogen atoms). The all-atom clashscore for this structure is 12.

The worst 5 of 426 close contacts within the same asymmetric unit are listed below, sorted by their clash magnitude.

Atom-1	Atom-2	Interatomic distance (Å)	Clash overlap (Å)
1:A:147:GLY:HA3	1:A:164:LEU:HA	1.45	0.98
1:E:147:GLY:HA3	1:E:164:LEU:HA	1.48	0.94
1:E:220:GLU:HG3	1:F:356:LEU:HD22	1.65	0.79
1:D:213:ARG:HH11	1:D:213:ARG:HB2	1.47	0.78
1:H:143:LYS:HE3	1:H:146:ASP:HB3	1.69	0.75

There are no symmetry-related clashes.

5.3 Torsion angles

5.3.1 Protein backbone

In the following table, the Percentiles column shows the percent Ramachandran outliers of the chain as a percentile score with respect to all X-ray entries followed by that with respect to entries of similar resolution.

The Analysed column shows the number of residues for which the backbone conformation was analysed, and the total number of residues.

Mol	Chain	Analysed	Favoured	Allowed	Outliers	Percentiles	
1	A	266/304 (88%)	256 (96%)	10 (4%)	0	100	100
1	B	264/304 (87%)	259 (98%)	5 (2%)	0	100	100
1	C	263/304 (86%)	253 (96%)	8 (3%)	2 (1%)	19	13
1	D	263/304 (86%)	257 (98%)	6 (2%)	0	100	100
1	E	264/304 (87%)	254 (96%)	10 (4%)	0	100	100
1	F	263/304 (86%)	257 (98%)	6 (2%)	0	100	100
1	G	263/304 (86%)	257 (98%)	5 (2%)	1 (0%)	34	30
1	H	264/304 (87%)	252 (96%)	11 (4%)	1 (0%)	34	30
All	All	2110/2432 (87%)	2045 (97%)	61 (3%)	4 (0%)	47	44

All (4) Ramachandran outliers are listed below:

Mol	Chain	Res	Type
1	H	396	GLU
1	C	396	GLU
1	G	396	GLU
1	C	300	PRO

5.3.2 Protein sidechains

In the following table, the Percentiles column shows the percent sidechain outliers of the chain as a percentile score with respect to all X-ray entries followed by that with respect to entries of similar resolution.

The Analysed column shows the number of residues for which the sidechain conformation was analysed, and the total number of residues.

Mol	Chain	Analysed	Rotameric	Outliers	Percentiles	
1	A	244/267 (91%)	231 (95%)	13 (5%)	22	18

Continued on next page...

Continued from previous page...

Mol	Chain	Analysed	Rotameric	Outliers	Percentiles	
1	B	242/267 (91%)	228 (94%)	14 (6%)	20	15
1	C	242/267 (91%)	226 (93%)	16 (7%)	16	12
1	D	242/267 (91%)	229 (95%)	13 (5%)	22	18
1	E	242/267 (91%)	230 (95%)	12 (5%)	24	20
1	F	242/267 (91%)	232 (96%)	10 (4%)	30	28
1	G	242/267 (91%)	230 (95%)	12 (5%)	24	20
1	H	242/267 (91%)	228 (94%)	14 (6%)	20	15
All	All	1938/2136 (91%)	1834 (95%)	104 (5%)	22	18

5 of 104 residues with a non-rotameric sidechain are listed below:

Mol	Chain	Res	Type
1	E	184	LYS
1	F	207	LEU
1	H	373	LYS
1	E	204	LYS
1	E	355	LEU

Sometimes sidechains can be flipped to improve hydrogen bonding and reduce clashes. 5 of 43 such sidechains are listed below:

Mol	Chain	Res	Type
1	F	229	HIS
1	G	229	HIS
1	F	312	GLN
1	F	363	ASN
1	G	358	GLN

5.3.3 RNA ⓘ

There are no RNA molecules in this entry.

5.4 Non-standard residues in protein, DNA, RNA chains ⓘ

There are no non-standard protein/DNA/RNA residues in this entry.

5.5 Carbohydrates [i](#)

There are no monosaccharides in this entry.

5.6 Ligand geometry [i](#)

4 ligands are modelled in this entry.

In the following table, the Counts columns list the number of bonds (or angles) for which Mogul statistics could be retrieved, the number of bonds (or angles) that are observed in the model and the number of bonds (or angles) that are defined in the Chemical Component Dictionary. The Link column lists molecule types, if any, to which the group is linked. The Z score for a bond length (or angle) is the number of standard deviations the observed value is removed from the expected value. A bond length (or angle) with $|Z| > 2$ is considered an outlier worth inspection. RMSZ is the root-mean-square of all Z scores of the bond lengths (or angles).

Mol	Type	Chain	Res	Link	Bond lengths			Bond angles		
					Counts	RMSZ	$\# Z > 2$	Counts	RMSZ	$\# Z > 2$
2	CXS	A	501	-	14,14,14	0.76	0	18,18,18	1.03	1 (5%)
2	CXS	B	501	-	14,14,14	0.78	0	18,18,18	1.06	1 (5%)
2	CXS	D	504	-	14,14,14	0.70	0	18,18,18	1.05	1 (5%)
2	CXS	F	501	-	14,14,14	0.76	0	18,18,18	1.03	1 (5%)

In the following table, the Chirals column lists the number of chiral outliers, the number of chiral centers analysed, the number of these observed in the model and the number defined in the Chemical Component Dictionary. Similar counts are reported in the Torsion and Rings columns. '-' means no outliers of that kind were identified.

Mol	Type	Chain	Res	Link	Chirals	Torsions	Rings
2	CXS	A	501	-	-	2/8/16/16	0/1/1/1
2	CXS	B	501	-	-	6/8/16/16	0/1/1/1
2	CXS	D	504	-	-	3/8/16/16	0/1/1/1
2	CXS	F	501	-	-	4/8/16/16	0/1/1/1

There are no bond length outliers.

All (4) bond angle outliers are listed below:

Mol	Chain	Res	Type	Atoms	Z	Observed(°)	Ideal(°)
2	B	501	CXS	C3-N-C4	2.30	118.61	114.18
2	D	504	CXS	C3-N-C4	2.24	118.50	114.18
2	F	501	CXS	C3-N-C4	2.10	118.23	114.18
2	A	501	CXS	C3-N-C4	2.08	118.19	114.18

There are no chirality outliers.

5 of 15 torsion outliers are listed below:

Mol	Chain	Res	Type	Atoms
2	B	501	CXS	S-C1-C2-C3
2	D	504	CXS	C1-C2-C3-N
2	F	501	CXS	S-C1-C2-C3
2	F	501	CXS	C1-C2-C3-N
2	A	501	CXS	C5-C4-N-C3

There are no ring outliers.

1 monomer is involved in 1 short contact:

Mol	Chain	Res	Type	Clashes	Symm-Clashes
2	B	501	CXS	1	0

5.7 Other polymers [i](#)

There are no such residues in this entry.

5.8 Polymer linkage issues [i](#)

There are no chain breaks in this entry.

6 Fit of model and data [i](#)

6.1 Protein, DNA and RNA chains [i](#)

In the following table, the column labelled ‘#RSRZ > 2’ contains the number (and percentage) of RSRZ outliers, followed by percent RSRZ outliers for the chain as percentile scores relative to all X-ray entries and entries of similar resolution. The OWAB column contains the minimum, median, 95th percentile and maximum values of the occupancy-weighted average B-factor per residue. The column labelled ‘Q < 0.9’ lists the number of (and percentage) of residues with an average occupancy less than 0.9.

Mol	Chain	Analysed	<RSRZ>	#RSRZ>2	OWAB(Å ²)	Q<0.9
1	A	266/304 (87%)	0.06	9 (3%) 45 44	12, 27, 53, 67	0
1	B	264/304 (86%)	-0.21	3 (1%) 80 79	10, 20, 38, 53	0
1	C	263/304 (86%)	-0.00	9 (3%) 45 44	12, 26, 49, 66	0
1	D	263/304 (86%)	-0.20	1 (0%) 92 92	9, 20, 39, 54	0
1	E	264/304 (86%)	0.08	10 (3%) 40 39	12, 26, 47, 67	0
1	F	263/304 (86%)	-0.21	2 (0%) 86 85	9, 19, 39, 53	0
1	G	263/304 (86%)	-0.18	2 (0%) 86 85	9, 20, 38, 52	0
1	H	264/304 (86%)	-0.01	5 (1%) 66 65	11, 26, 48, 68	0
All	All	2110/2432 (86%)	-0.08	41 (1%) 66 65	9, 23, 46, 68	0

The worst 5 of 41 RSRZ outliers are listed below:

Mol	Chain	Res	Type	RSRZ
1	C	430	ILE	6.1
1	A	430	ILE	5.3
1	G	162	GLY	5.0
1	E	430	ILE	4.5
1	C	163	SER	3.8

6.2 Non-standard residues in protein, DNA, RNA chains [i](#)

There are no non-standard protein/DNA/RNA residues in this entry.

6.3 Carbohydrates [i](#)

There are no monosaccharides in this entry.

6.4 Ligands [i](#)

In the following table, the Atoms column lists the number of modelled atoms in the group and the number defined in the chemical component dictionary. The B-factors column lists the minimum, median, 95th percentile and maximum values of B factors of atoms in the group. The column labelled 'Q< 0.9' lists the number of atoms with occupancy less than 0.9.

Mol	Type	Chain	Res	Atoms	RSCC	RSR	B-factors(Å ²)	Q<0.9
2	CXS	A	501	14/14	0.80	0.19	44,45,52,53	0
2	CXS	B	501	14/14	0.81	0.20	48,49,59,60	0
2	CXS	F	501	14/14	0.82	0.18	49,50,57,57	0
2	CXS	D	504	14/14	0.86	0.19	48,49,56,56	0

6.5 Other polymers [i](#)

There are no such residues in this entry.