



wwPDB X-ray Structure Validation Summary Report ⓘ

Mar 12, 2026 – 06:50 PM UTC

PDB ID : 9QBI / pdb_00009qbi
Title : Yeast 20S proteasome mutant: beta5_G128V (b5-propeptide in trans)
Authors : Huber, E.M.; Heinemeyer, W.; Groll, M.
Deposited on : 2025-03-03
Resolution : 2.60 Å(reported)

This is a wwPDB X-ray Structure Validation Summary Report for a publicly released PDB entry.

We welcome your comments at validation@mail.wwpdb.org

A user guide is available at

<https://www.wwpdb.org/validation/2017/XrayValidationReportHelp>

with specific help available everywhere you see the ⓘ symbol.

The types of validation reports are described at

<http://www.wwpdb.org/validation/2017/FAQs#types>.

The following versions of software and data (see [references ⓘ](#)) were used in the production of this report:

MolProbity : 4-5-2 with Phenix2.0
Mogul : 2022.3.0, CSD as543be (2022)
Xtriage (Phenix) : 2.0
EDS : 3.0
Percentile statistics : 20250101.v01 (using entries in the PDB archive January 1st 2025)
CCP4 : 9.0.010 (Gargrove)
Density-Fitness : 1.0.12
Ideal geometry (proteins) : Engh & Huber (2001)
Ideal geometry (DNA, RNA) : Parkinson et al. (1996)
Validation Pipeline (wwPDB-VP) : 2.49

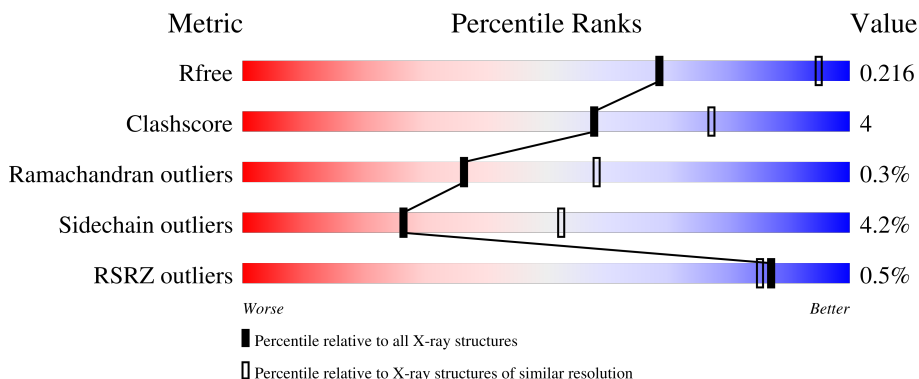
1 Overall quality at a glance i

The following experimental techniques were used to determine the structure:

X-RAY DIFFRACTION

The reported resolution of this entry is 2.60 Å.

Percentile scores (ranging between 0-100) for global validation metrics of the entry are shown in the following graphic. The table shows the number of entries on which the scores are based.



Metric	Whole archive (#Entries)	Similar resolution (#Entries, resolution range(Å))
R_{free}	180053	4008 (2.60-2.60)
Clashscore	190562	4347 (2.60-2.60)
Ramachandran outliers	187476	4277 (2.60-2.60)
Sidechain outliers	187428	4277 (2.60-2.60)
RSRZ outliers	180081	4008 (2.60-2.60)

The table below summarises the geometric issues observed across the polymeric chains and their fit to the electron density. The red, orange, yellow and green segments of the lower bar indicate the fraction of residues that contain outliers for ≥ 3 , 2, 1 and 0 types of geometric quality criteria respectively. A grey segment represents the fraction of residues that are not modelled. The numeric value for each fraction is indicated below the corresponding segment, with a dot representing fractions $\leq 5\%$. The upper red bar (where present) indicates the fraction of residues that have poor fit to the electron density. The numeric value is given above the bar.

Mol	Chain	Length	Quality of chain
1	A	250	<div style="display: flex; align-items: center;"> <div style="width: 2%; height: 10px; background-color: red; margin-right: 2px;"></div> <div style="width: 96%; height: 10px; background-color: green; margin-right: 2px;"></div> <div style="width: 2%; height: 10px; background-color: yellow; margin-right: 2px;"></div> <div style="width: 0%; height: 10px; background-color: orange; margin-right: 2px;"></div> <div style="width: 0%; height: 10px; background-color: grey;"></div> </div> <p style="text-align: center;">96%</p>
1	O	250	<div style="display: flex; align-items: center;"> <div style="width: 2%; height: 10px; background-color: red; margin-right: 2px;"></div> <div style="width: 96%; height: 10px; background-color: green; margin-right: 2px;"></div> <div style="width: 2%; height: 10px; background-color: yellow; margin-right: 2px;"></div> <div style="width: 0%; height: 10px; background-color: orange; margin-right: 2px;"></div> <div style="width: 0%; height: 10px; background-color: grey;"></div> </div> <p style="text-align: center;">96%</p>
2	B	258	<div style="display: flex; align-items: center;"> <div style="width: 2%; height: 10px; background-color: red; margin-right: 2px;"></div> <div style="width: 86%; height: 10px; background-color: green; margin-right: 2px;"></div> <div style="width: 8%; height: 10px; background-color: yellow; margin-right: 2px;"></div> <div style="width: 5%; height: 10px; background-color: orange; margin-right: 2px;"></div> <div style="width: 0%; height: 10px; background-color: grey;"></div> </div> <p style="text-align: center;">86% 8% 5%</p>
2	P	258	<div style="display: flex; align-items: center;"> <div style="width: 2%; height: 10px; background-color: red; margin-right: 2px;"></div> <div style="width: 86%; height: 10px; background-color: green; margin-right: 2px;"></div> <div style="width: 9%; height: 10px; background-color: yellow; margin-right: 2px;"></div> <div style="width: 5%; height: 10px; background-color: orange; margin-right: 2px;"></div> <div style="width: 0%; height: 10px; background-color: grey;"></div> </div> <p style="text-align: center;">86% 9% 5%</p>
3	C	254	<div style="display: flex; align-items: center;"> <div style="width: 86%; height: 10px; background-color: green; margin-right: 2px;"></div> <div style="width: 7%; height: 10px; background-color: yellow; margin-right: 2px;"></div> <div style="width: 6%; height: 10px; background-color: orange; margin-right: 2px;"></div> <div style="width: 0%; height: 10px; background-color: grey;"></div> </div> <p style="text-align: center;">86% 7% 6%</p>

Continued on next page...

Continued from previous page...

Mol	Chain	Length	Quality of chain
3	Q	254	2% 86% 6% 7%
4	D	260	81% 8% 10%
4	R	260	82% 8% 10%
5	E	234	90% 7% ..
5	S	234	89% 9% ..
6	F	288	78% 5% 16%
6	T	288	78% 5% 16%
7	G	252	86% 9% ..
7	U	252	87% 8% ..
8	H	232	84% 14% .
8	V	232	81% 15% ..
9	I	205	91% 8%
9	W	205	90% 9%
10	J	198	74% 21% ..
10	X	198	73% 23% ..
11	K	212	2% 73% 22% ..
11	Y	212	% 76% 18% 5%
12	L	222	88% 10% .
12	Z	222	88% 10% .
13	M	246	85% 9% 5%
13	a	246	% 83% 10% 5%
14	N	196	86% 12% .
14	b	196	86% 12% .

2 Entry composition [i](#)

There are 20 unique types of molecules in this entry. The entry contains 50157 atoms, of which 0 are hydrogens and 0 are deuteriums.

In the tables below, the ZeroOcc column contains the number of atoms modelled with zero occupancy, the AltConf column contains the number of residues with at least one atom in alternate conformation and the Trace column contains the number of residues modelled with at most 2 atoms.

- Molecule 1 is a protein called Proteasome subunit alpha type-2.

Mol	Chain	Residues	Atoms					ZeroOcc	AltConf	Trace
			Total	C	N	O	S			
1	A	250	1915	1219	315	377	4	0	0	0
1	O	250	1915	1219	315	377	4	0	0	0

- Molecule 2 is a protein called Proteasome subunit alpha type-3.

Mol	Chain	Residues	Atoms					ZeroOcc	AltConf	Trace
			Total	C	N	O	S			
2	B	244	1904	1201	321	379	3	0	0	0
2	P	244	1904	1201	321	379	3	0	0	0

- Molecule 3 is a protein called Proteasome subunit alpha type-4.

Mol	Chain	Residues	Atoms					ZeroOcc	AltConf	Trace
			Total	C	N	O	S			
3	C	240	1881	1176	329	372	4	0	0	0
3	Q	237	1860	1163	326	367	4	0	0	0

- Molecule 4 is a protein called Proteasome subunit alpha type-5.

Mol	Chain	Residues	Atoms					ZeroOcc	AltConf	Trace
			Total	C	N	O	S			
4	D	235	1813	1136	304	366	7	0	0	0
4	R	235	1813	1136	304	366	7	0	0	0

- Molecule 5 is a protein called Proteasome subunit alpha type-6.

Mol	Chain	Residues	Atoms					ZeroOcc	AltConf	Trace
5	E	231	Total	C	N	O	S	0	0	0
			1773	1114	307	348	4			
5	S	231	Total	C	N	O	S	0	0	0
			1773	1114	307	348	4			

- Molecule 6 is a protein called Probable proteasome subunit alpha type-7.

Mol	Chain	Residues	Atoms					ZeroOcc	AltConf	Trace
6	F	243	Total	C	N	O	S	0	0	0
			1892	1203	329	356	4			
6	T	243	Total	C	N	O	S	0	0	0
			1892	1203	329	356	4			

- Molecule 7 is a protein called Proteasome subunit alpha type-1.

Mol	Chain	Residues	Atoms					ZeroOcc	AltConf	Trace
7	G	241	Total	C	N	O	S	0	0	0
			1907	1214	320	365	8			
7	U	241	Total	C	N	O	S	0	0	0
			1907	1214	320	365	8			

- Molecule 8 is a protein called Proteasome subunit beta type-2.

Mol	Chain	Residues	Atoms					ZeroOcc	AltConf	Trace
8	H	226	Total	C	N	O	S	0	0	0
			1719	1082	298	332	7			
8	V	226	Total	C	N	O	S	0	0	0
			1719	1082	298	332	7			

- Molecule 9 is a protein called Proteasome subunit beta type-3.

Mol	Chain	Residues	Atoms					ZeroOcc	AltConf	Trace
9	I	204	Total	C	N	O	S	0	0	0
			1581	1010	258	305	8			
9	W	204	Total	C	N	O	S	0	0	0
			1581	1010	258	305	8			

- Molecule 10 is a protein called Proteasome subunit beta type-4.

Mol	Chain	Residues	Atoms					ZeroOcc	AltConf	Trace
10	J	195	Total	C	N	O	S	0	0	0
			1561	992	264	299	6			

Continued on next page...

Continued from previous page...

Mol	Chain	Residues	Atoms					ZeroOcc	AltConf	Trace
			Total	C	N	O	S			
10	X	195	1561	992	264	299	6	0	0	0

- Molecule 11 is a protein called Proteasome subunit beta type-5.

Mol	Chain	Residues	Atoms					ZeroOcc	AltConf	Trace
			Total	C	N	O	S			
11	K	210	1631	1037	278	309	7	0	0	0
11	Y	212	1647	1048	280	312	7	0	0	0

There are 2 discrepancies between the modelled and reference sequences:

Chain	Residue	Modelled	Actual	Comment	Reference
K	130	VAL	GLY	engineered mutation	UNP P30656
Y	130	VAL	GLY	engineered mutation	UNP P30656

- Molecule 12 is a protein called Proteasome subunit beta type-6.

Mol	Chain	Residues	Atoms					ZeroOcc	AltConf	Trace
			Total	C	N	O	S			
12	L	222	1757	1115	303	335	4	0	0	0
12	Z	222	1757	1115	303	335	4	0	0	0

- Molecule 13 is a protein called Proteasome subunit beta type-7.

Mol	Chain	Residues	Atoms					ZeroOcc	AltConf	Trace
			Total	C	N	O	S			
13	M	233	1824	1154	312	351	7	0	0	0
13	a	233	1824	1154	312	351	7	0	0	0

- Molecule 14 is a protein called Proteasome subunit beta type-1.

Mol	Chain	Residues	Atoms					ZeroOcc	AltConf	Trace
			Total	C	N	O	S			
14	N	196	1512	955	250	300	7	0	0	0
14	b	196	1512	955	250	300	7	0	0	0

- Molecule 15 is SULFATE ION (CCD ID: SO4) (formula: O₄S).



Mol	Chain	Residues	Atoms			ZeroOcc	AltConf
15	B	1	Total	O	S	0	0
			5	4	1		
15	P	1	Total	O	S	0	0
			5	4	1		

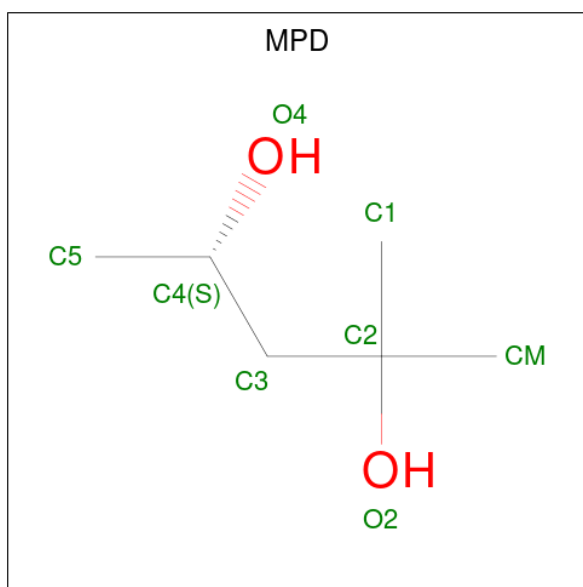
- Molecule 16 is MAGNESIUM ION (CCD ID: MG) (formula: Mg).

Mol	Chain	Residues	Atoms		ZeroOcc	AltConf
16	G	1	Total	Mg	0	0
			1	1		
16	N	1	Total	Mg	0	0
			1	1		
16	W	1	Total	Mg	0	0
			1	1		

- Molecule 17 is CHLORIDE ION (CCD ID: CL) (formula: Cl).

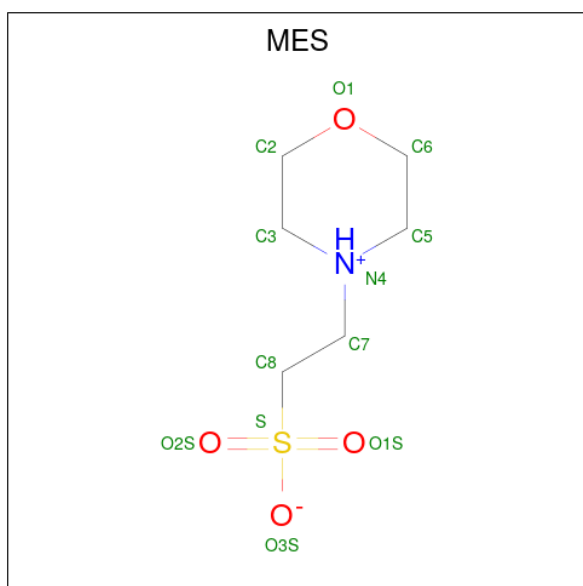
Mol	Chain	Residues	Atoms		ZeroOcc	AltConf
17	G	1	Total	Cl	0	0
			1	1		
17	U	1	Total	Cl	0	0
			1	1		

- Molecule 18 is (4S)-2-METHYL-2,4-PENTANEDIOL (CCD ID: MPD) (formula: C₆H₁₄O₂).



Mol	Chain	Residues	Atoms			ZeroOcc	AltConf
18	K	1	Total	C	O	0	0
			8	6	2		
18	a	1	Total	C	O	0	0
			8	6	2		

- Molecule 19 is 2-(N-MORPHOLINO)-ETHANESULFONIC ACID (CCD ID: MES) (formula: C₆H₁₃NO₄S).



Mol	Chain	Residues	Atoms					ZeroOcc	AltConf
19	M	1	Total	C	N	O	S	0	0
			12	6	1	4	1		

Continued on next page...

Continued from previous page...

Mol	Chain	Residues	Atoms					ZeroOcc	AltConf
19	N	1	Total	C	N	O	S	0	0
			12	6	1	4	1		
19	Z	1	Total	C	N	O	S	0	0
			12	6	1	4	1		
19	b	1	Total	C	N	O	S	0	0
			12	6	1	4	1		

- Molecule 20 is water.

Mol	Chain	Residues	Atoms		ZeroOcc	AltConf
20	A	16	Total	O	0	0
			16	16		
20	B	25	Total	O	0	0
			25	25		
20	C	21	Total	O	0	0
			21	21		
20	D	23	Total	O	0	0
			23	23		
20	E	17	Total	O	0	0
			17	17		
20	F	26	Total	O	0	0
			26	26		
20	G	37	Total	O	0	0
			37	37		
20	H	40	Total	O	0	0
			40	40		
20	I	35	Total	O	0	0
			35	35		
20	J	26	Total	O	0	0
			26	26		
20	K	23	Total	O	0	0
			23	23		
20	L	31	Total	O	0	0
			31	31		
20	M	47	Total	O	0	0
			47	47		
20	N	25	Total	O	0	0
			25	25		
20	O	23	Total	O	0	0
			23	23		
20	P	13	Total	O	0	0
			13	13		

Continued on next page...

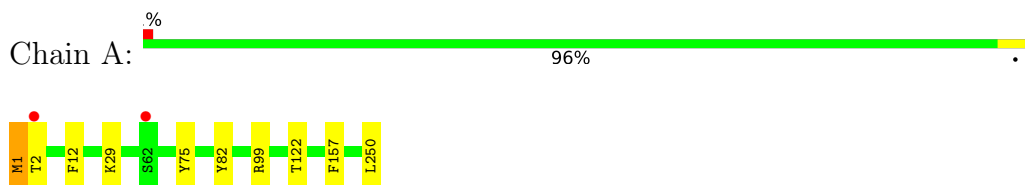
Continued from previous page...

Mol	Chain	Residues	Atoms		ZeroOcc	AltConf
20	Q	15	Total 15	O 15	0	0
20	R	19	Total 19	O 19	0	0
20	S	11	Total 11	O 11	0	0
20	T	20	Total 20	O 20	0	0
20	U	37	Total 37	O 37	0	0
20	V	37	Total 37	O 37	0	0
20	W	28	Total 28	O 28	0	0
20	X	19	Total 19	O 19	0	0
20	Y	27	Total 27	O 27	0	0
20	Z	25	Total 25	O 25	0	0
20	a	41	Total 41	O 41	0	0
20	b	36	Total 36	O 36	0	0

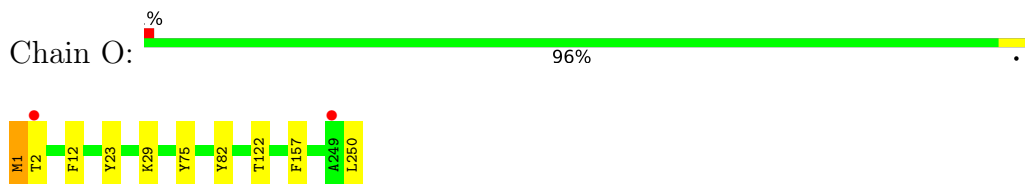
3 Residue-property plots [i](#)

These plots are drawn for all protein, RNA, DNA and oligosaccharide chains in the entry. The first graphic for a chain summarises the proportions of the various outlier classes displayed in the second graphic. The second graphic shows the sequence view annotated by issues in geometry and electron density. Residues are color-coded according to the number of geometric quality criteria for which they contain at least one outlier: green = 0, yellow = 1, orange = 2 and red = 3 or more. A red dot above a residue indicates a poor fit to the electron density ($RSRZ > 2$). Stretches of 2 or more consecutive residues without any outlier are shown as a green connector. Residues present in the sample, but not in the model, are shown in grey.

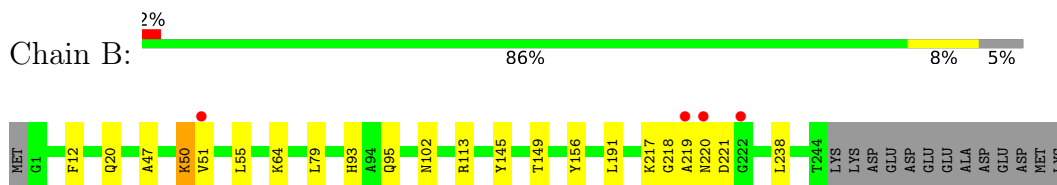
- Molecule 1: Proteasome subunit alpha type-2



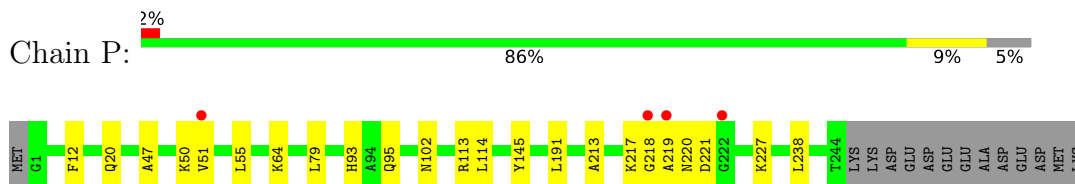
- Molecule 1: Proteasome subunit alpha type-2



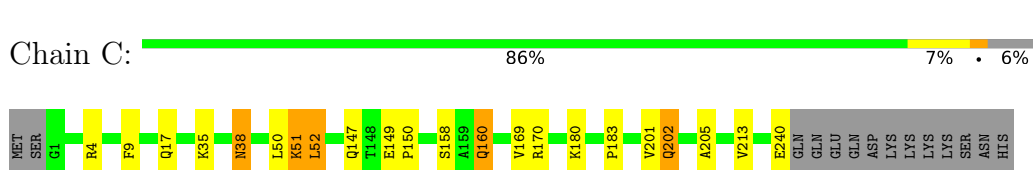
- Molecule 2: Proteasome subunit alpha type-3



- Molecule 2: Proteasome subunit alpha type-3

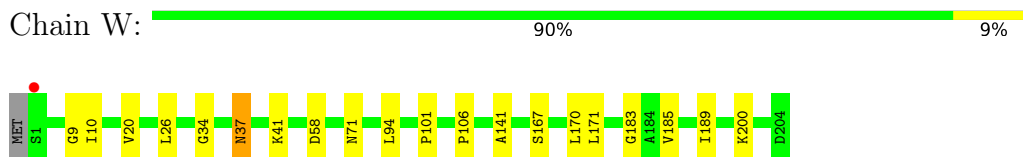


- Molecule 3: Proteasome subunit alpha type-4

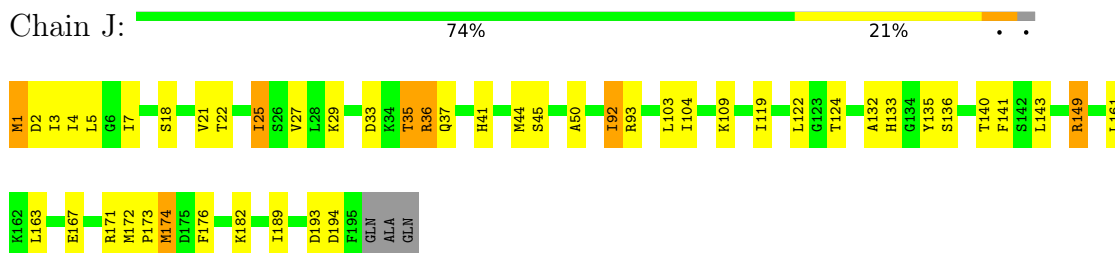


- Molecule 3: Proteasome subunit alpha type-4

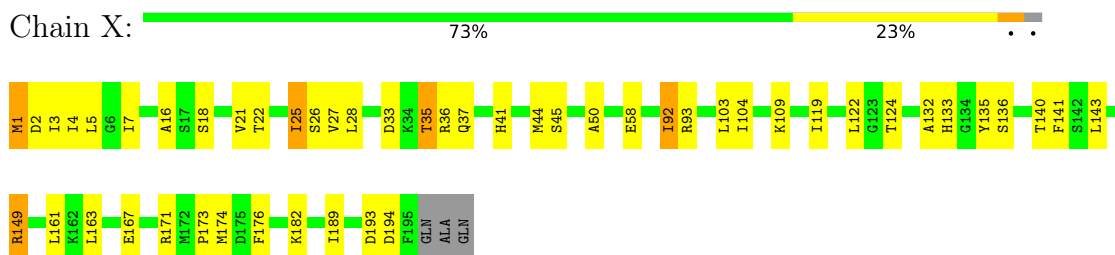
- Molecule 9: Proteasome subunit beta type-3



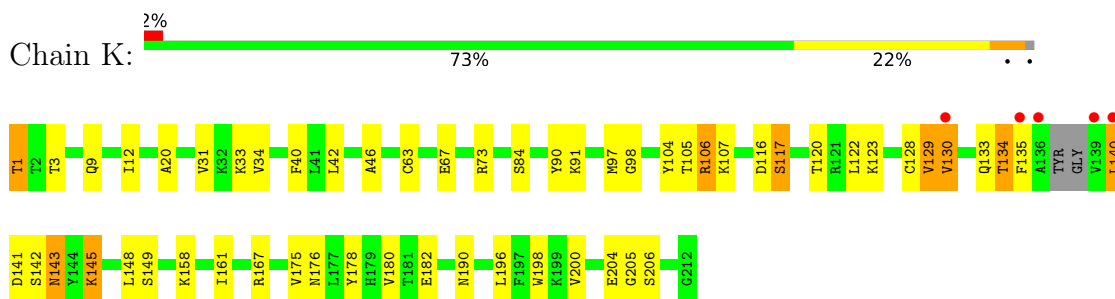
- Molecule 10: Proteasome subunit beta type-4



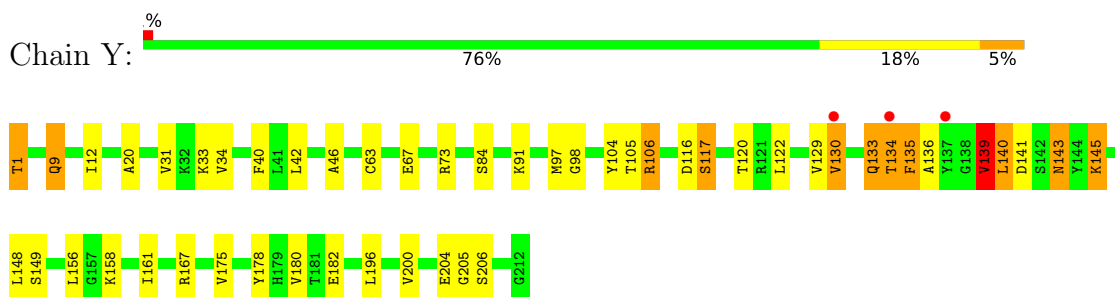
- Molecule 10: Proteasome subunit beta type-4




- Molecule 11: Proteasome subunit beta type-5



- Molecule 11: Proteasome subunit beta type-5




- Molecule 12: Proteasome subunit beta type-6

Chain L:  88% 10%




- Molecule 12: Proteasome subunit beta type-6

Chain Z:  88% 10%




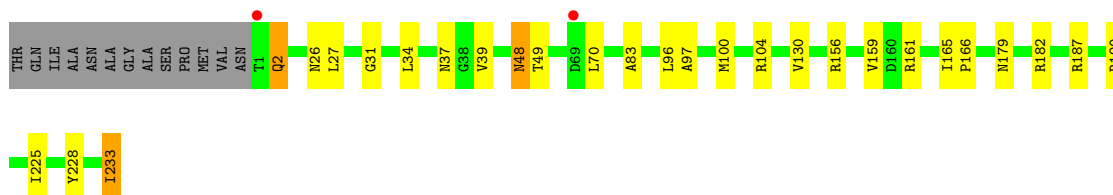
- Molecule 13: Proteasome subunit beta type-7

Chain M:  85% 9% 5%




- Molecule 13: Proteasome subunit beta type-7

Chain a:  83% 10% 5%




- Molecule 14: Proteasome subunit beta type-1

Chain N:  86% 12%



- Molecule 14: Proteasome subunit beta type-1

Chain b:  86% 12%



4 Data and refinement statistics

Property	Value	Source
Space group	P 1 21 1	Depositor
Cell constants a, b, c, α , β , γ	134.62Å 301.12Å 144.57Å 90.00° 112.72° 90.00°	Depositor
Resolution (Å)	15.00 – 2.60 15.00 – 2.60	Depositor EDS
% Data completeness (in resolution range)	98.6 (15.00-2.60) 98.6 (15.00-2.60)	Depositor EDS
R_{merge}	0.07	Depositor
R_{sym}	(Not available)	Depositor
$\langle I/\sigma(I) \rangle$ ¹	2.82 (at 2.61Å)	Xtrriage
Refinement program	REFMAC 5.8.0238	Depositor
R, R_{free}	0.177 , 0.215 0.178 , 0.216	Depositor DCC
R_{free} test set	15984 reflections (5.00%)	wwPDB-VP
Wilson B-factor (Å ²)	34.7	Xtrriage
Anisotropy	1.336	Xtrriage
Bulk solvent k_{sol} (e/Å ³), B_{sol} (Å ²)	0.33 , 57.4	EDS
L-test for twinning ²	$\langle L \rangle = 0.49$, $\langle L^2 \rangle = 0.32$	Xtrriage
Estimated twinning fraction	No twinning to report.	Xtrriage
F_o, F_c correlation	0.96	EDS
Total number of atoms	50157	wwPDB-VP
Average B, all atoms (Å ²)	58.0	wwPDB-VP

Xtrriage's analysis on translational NCS is as follows: *The largest off-origin peak in the Patterson function is 2.14% of the height of the origin peak. No significant pseudotranslation is detected.*

¹Intensities estimated from amplitudes.

²Theoretical values of $\langle |L| \rangle$, $\langle L^2 \rangle$ for acentric reflections are 0.5, 0.333 respectively for untwinned datasets, and 0.375, 0.2 for perfectly twinned datasets.

5 Model quality i

5.1 Standard geometry i

Bond lengths and bond angles in the following residue types are not validated in this section: CL, SO4, MES, MPD, MG

The Z score for a bond length (or angle) is the number of standard deviations the observed value is removed from the expected value. A bond length (or angle) with $|Z| > 5$ is considered an outlier worth inspection. RMSZ is the root-mean-square of all Z scores of the bond lengths (or angles).

Mol	Chain	Bond lengths		Bond angles	
		RMSZ	# $ Z > 5$	RMSZ	# $ Z > 5$
1	A	1.02	0/1952	1.41	0/2642
1	O	1.02	0/1952	1.42	0/2642
2	B	1.02	0/1934	1.43	0/2618
2	P	1.02	0/1934	1.44	0/2618
3	C	1.02	0/1910	1.45	0/2586
3	Q	1.02	0/1888	1.46	0/2554
4	D	1.03	0/1837	1.47	0/2475
4	R	1.03	0/1837	1.48	0/2475
5	E	1.03	0/1800	1.43	0/2433
5	S	1.03	0/1800	1.44	2/2433 (0.1%)
6	F	1.02	0/1932	1.45	2/2609 (0.1%)
6	T	1.02	0/1932	1.46	2/2609 (0.1%)
7	G	1.00	0/1945	1.42	0/2634
7	U	1.01	0/1945	1.42	0/2634
8	H	1.01	0/1750	1.41	2/2373 (0.1%)
8	V	1.02	0/1750	1.41	2/2373 (0.1%)
9	I	1.01	0/1611	1.39	1/2174 (0.0%)
9	W	1.02	0/1611	1.40	1/2174 (0.0%)
10	J	0.96	0/1589	1.39	0/2142
10	X	0.96	0/1589	1.39	0/2142
11	K	0.97	0/1666	1.39	0/2253
11	Y	0.97	0/1684	1.40	0/2279
12	L	1.00	0/1795	1.38	0/2420
12	Z	0.99	0/1795	1.38	0/2420
13	M	1.03	1/1855 (0.1%)	1.39	0/2514
13	a	1.01	0/1855	1.39	1/2514 (0.0%)
14	N	1.00	0/1541	1.42	0/2087
14	b	1.00	0/1541	1.41	0/2087
All	All	1.01	1/50230 (0.0%)	1.42	13/67914 (0.0%)

All (1) bond length outliers are listed below:

Mol	Chain	Res	Type	Atoms	Z	Observed(Å)	Ideal(Å)
13	M	26	ASN	C-O	-5.40	1.17	1.24

The worst 5 of 13 bond angle outliers are listed below:

Mol	Chain	Res	Type	Atoms	Z	Observed(°)	Ideal(°)
6	T	77	LEU	CA-C-N	7.64	125.05	120.24
6	T	77	LEU	C-N-CA	7.64	125.05	120.24
6	F	77	LEU	CA-C-N	7.51	124.97	120.24
6	F	77	LEU	C-N-CA	7.51	124.97	120.24
9	W	183	GLY	CA-C-O	-5.97	118.34	122.22

There are no chirality outliers.

There are no planarity outliers.

5.2 Too-close contacts [i](#)

In the following table, the Non-H and H(model) columns list the number of non-hydrogen atoms and hydrogen atoms in the chain respectively. The H(added) column lists the number of hydrogen atoms added and optimized by MolProbity. The Clashes column lists the number of clashes within the asymmetric unit, whereas Symm-Clashes lists symmetry-related clashes.

Mol	Chain	Non-H	H(model)	H(added)	Clashes	Symm-Clashes
1	A	1915	0	1929	4	0
1	O	1915	0	1929	4	0
2	B	1904	0	1904	12	0
2	P	1904	0	1904	10	0
3	C	1881	0	1895	10	0
3	Q	1860	0	1871	9	0
4	D	1813	0	1797	12	0
4	R	1813	0	1797	10	0
5	E	1773	0	1775	13	0
5	S	1773	0	1775	14	0
6	F	1892	0	1883	9	0
6	T	1892	0	1883	9	0
7	G	1907	0	1901	13	0
7	U	1907	0	1901	12	0
8	H	1719	0	1719	15	0
8	V	1719	0	1719	18	0
9	I	1581	0	1574	15	0
9	W	1581	0	1574	16	0
10	J	1561	0	1569	57	0
10	X	1561	0	1569	60	0

Continued on next page...

Continued from previous page...

Mol	Chain	Non-H	H(model)	H(added)	Clashes	Symm-Clashes
11	K	1631	0	1588	53	0
11	Y	1647	0	1601	60	0
12	L	1757	0	1711	17	0
12	Z	1757	0	1711	16	0
13	M	1824	0	1832	12	0
13	a	1824	0	1832	14	0
14	N	1512	0	1481	18	0
14	b	1512	0	1481	19	0
15	B	5	0	0	0	0
15	P	5	0	0	0	0
16	G	1	0	0	0	0
16	N	1	0	0	0	0
16	W	1	0	0	0	0
17	G	1	0	0	0	0
17	U	1	0	0	0	0
18	K	8	0	14	1	0
18	a	8	0	14	0	0
19	M	12	0	13	0	0
19	N	12	0	13	2	0
19	Z	12	0	13	0	0
19	b	12	0	13	3	0
20	A	16	0	0	0	0
20	B	25	0	0	0	0
20	C	21	0	0	0	0
20	D	23	0	0	0	0
20	E	17	0	0	0	0
20	F	26	0	0	0	0
20	G	37	0	0	0	0
20	H	40	0	0	0	0
20	I	35	0	0	1	0
20	J	26	0	0	0	0
20	K	23	0	0	1	0
20	L	31	0	0	0	0
20	M	47	0	0	2	0
20	N	25	0	0	0	0
20	O	23	0	0	0	0
20	P	13	0	0	0	0
20	Q	15	0	0	0	0
20	R	19	0	0	0	0
20	S	11	0	0	1	0
20	T	20	0	0	0	0
20	U	37	0	0	0	0

Continued on next page...

Continued from previous page...

Mol	Chain	Non-H	H(model)	H(added)	Clashes	Symm-Clashes
20	V	37	0	0	0	0
20	W	28	0	0	0	0
20	X	19	0	0	1	0
20	Y	27	0	0	0	0
20	Z	25	0	0	0	0
20	a	41	0	0	1	0
20	b	36	0	0	0	0
All	All	50157	0	49185	442	0

The all-atom clashscore is defined as the number of clashes found per 1000 atoms (including hydrogen atoms). The all-atom clashscore for this structure is 4.

The worst 5 of 442 close contacts within the same asymmetric unit are listed below, sorted by their clash magnitude.

Atom-1	Atom-2	Interatomic distance (Å)	Clash overlap (Å)
10:J:171:ARG:NH1	11:Y:141:ASP:HB3	1.55	1.21
10:J:171:ARG:HH12	11:Y:141:ASP:CB	1.70	1.04
10:J:171:ARG:NH1	11:Y:141:ASP:CB	2.21	1.02
5:S:92:ASN:HD21	12:Z:70:ASN:HD21	1.02	0.99
10:J:149:ARG:NH1	11:Y:205:GLY:C	2.23	0.96

There are no symmetry-related clashes.

5.3 Torsion angles [i](#)

5.3.1 Protein backbone [i](#)

In the following table, the Percentiles column shows the percent Ramachandran outliers of the chain as a percentile score with respect to all X-ray entries followed by that with respect to entries of similar resolution.

The Analysed column shows the number of residues for which the backbone conformation was analysed, and the total number of residues.

Mol	Chain	Analysed	Favoured	Allowed	Outliers	Percentiles
1	A	248/250 (99%)	239 (96%)	8 (3%)	1 (0%)	30 51
1	O	248/250 (99%)	239 (96%)	8 (3%)	1 (0%)	30 51
2	B	242/258 (94%)	233 (96%)	5 (2%)	4 (2%)	7 15
2	P	242/258 (94%)	233 (96%)	5 (2%)	4 (2%)	7 15

Continued on next page...

Continued from previous page...

Mol	Chain	Analysed	Favoured	Allowed	Outliers	Percentiles	
3	C	238/254 (94%)	232 (98%)	3 (1%)	3 (1%)	9	21
3	Q	233/254 (92%)	227 (97%)	3 (1%)	3 (1%)	9	21
4	D	231/260 (89%)	227 (98%)	4 (2%)	0	100	100
4	R	231/260 (89%)	227 (98%)	4 (2%)	0	100	100
5	E	229/234 (98%)	220 (96%)	9 (4%)	0	100	100
5	S	229/234 (98%)	221 (96%)	8 (4%)	0	100	100
6	F	241/288 (84%)	237 (98%)	4 (2%)	0	100	100
6	T	241/288 (84%)	237 (98%)	4 (2%)	0	100	100
7	G	239/252 (95%)	236 (99%)	3 (1%)	0	100	100
7	U	239/252 (95%)	236 (99%)	3 (1%)	0	100	100
8	H	224/232 (97%)	218 (97%)	6 (3%)	0	100	100
8	V	224/232 (97%)	218 (97%)	6 (3%)	0	100	100
9	I	202/205 (98%)	194 (96%)	8 (4%)	0	100	100
9	W	202/205 (98%)	195 (96%)	7 (4%)	0	100	100
10	J	193/198 (98%)	191 (99%)	2 (1%)	0	100	100
10	X	193/198 (98%)	191 (99%)	2 (1%)	0	100	100
11	K	206/212 (97%)	202 (98%)	4 (2%)	0	100	100
11	Y	210/212 (99%)	202 (96%)	7 (3%)	1 (0%)	24	46
12	L	220/222 (99%)	216 (98%)	4 (2%)	0	100	100
12	Z	220/222 (99%)	216 (98%)	4 (2%)	0	100	100
13	M	231/246 (94%)	222 (96%)	8 (4%)	1 (0%)	30	51
13	a	231/246 (94%)	222 (96%)	8 (4%)	1 (0%)	30	51
14	N	194/196 (99%)	190 (98%)	4 (2%)	0	100	100
14	b	194/196 (99%)	190 (98%)	4 (2%)	0	100	100
All	All	6275/6614 (95%)	6111 (97%)	145 (2%)	19 (0%)	36	58

5 of 19 Ramachandran outliers are listed below:

Mol	Chain	Res	Type
1	A	2	THR
2	B	51	VAL
2	B	221	ASP
3	C	202	GLN
1	O	2	THR

5.3.2 Protein sidechains [i](#)

In the following table, the Percentiles column shows the percent sidechain outliers of the chain as a percentile score with respect to all X-ray entries followed by that with respect to entries of similar resolution.

The Analysed column shows the number of residues for which the sidechain conformation was analysed, and the total number of residues.

Mol	Chain	Analysed	Rotameric	Outliers	Percentiles	
1	A	209/209 (100%)	204 (98%)	5 (2%)	43	70
1	O	209/209 (100%)	204 (98%)	5 (2%)	43	70
2	B	203/216 (94%)	197 (97%)	6 (3%)	36	64
2	P	203/216 (94%)	197 (97%)	6 (3%)	36	64
3	C	212/226 (94%)	201 (95%)	11 (5%)	21	44
3	Q	209/226 (92%)	199 (95%)	10 (5%)	23	47
4	D	194/215 (90%)	183 (94%)	11 (6%)	18	40
4	R	194/215 (90%)	183 (94%)	11 (6%)	18	40
5	E	190/193 (98%)	183 (96%)	7 (4%)	30	57
5	S	190/193 (98%)	183 (96%)	7 (4%)	30	57
6	F	201/239 (84%)	193 (96%)	8 (4%)	28	55
6	T	201/239 (84%)	193 (96%)	8 (4%)	28	55
7	G	206/210 (98%)	198 (96%)	8 (4%)	28	55
7	U	206/210 (98%)	198 (96%)	8 (4%)	28	55
8	H	185/190 (97%)	176 (95%)	9 (5%)	22	47
8	V	185/190 (97%)	174 (94%)	11 (6%)	18	38
9	I	172/173 (99%)	170 (99%)	2 (1%)	63	83
9	W	172/173 (99%)	170 (99%)	2 (1%)	63	83
10	J	173/175 (99%)	164 (95%)	9 (5%)	21	44
10	X	173/175 (99%)	166 (96%)	7 (4%)	28	55
11	K	169/170 (99%)	156 (92%)	13 (8%)	12	27
11	Y	170/170 (100%)	156 (92%)	14 (8%)	10	24
12	L	185/185 (100%)	178 (96%)	7 (4%)	29	56
12	Z	185/185 (100%)	178 (96%)	7 (4%)	29	56
13	M	199/208 (96%)	190 (96%)	9 (4%)	24	50
13	a	199/208 (96%)	191 (96%)	8 (4%)	28	55

Continued on next page...

Continued from previous page...

Mol	Chain	Analysed	Rotameric	Outliers	Percentiles	
14	N	162/162 (100%)	155 (96%)	7 (4%)	26	51
14	b	162/162 (100%)	155 (96%)	7 (4%)	26	51
All	All	5318/5542 (96%)	5095 (96%)	223 (4%)	26	52

5 of 223 residues with a non-rotameric sidechain are listed below:

Mol	Chain	Res	Type
1	O	157	PHE
14	b	119	VAL
4	R	242	GLU
14	b	104	ASP
11	Y	145	LYS

Sometimes sidechains can be flipped to improve hydrogen bonding and reduce clashes. 5 of 159 such sidechains are listed below:

Mol	Chain	Res	Type
7	U	114	ASN
12	Z	36	ASN
7	U	167	GLN
9	W	88	GLN
13	a	18	ASN

5.3.3 RNA [i](#)

There are no RNA molecules in this entry.

5.4 Non-standard residues in protein, DNA, RNA chains [i](#)

There are no non-standard protein/DNA/RNA residues in this entry.

5.5 Carbohydrates [i](#)

There are no oligosaccharides in this entry.

5.6 Ligand geometry [i](#)

Of 13 ligands modelled in this entry, 5 are monoatomic - leaving 8 for Mogul analysis.

In the following table, the Counts columns list the number of bonds (or angles) for which Mogul statistics could be retrieved, the number of bonds (or angles) that are observed in the model and the number of bonds (or angles) that are defined in the Chemical Component Dictionary. The Link column lists molecule types, if any, to which the group is linked. The Z score for a bond length (or angle) is the number of standard deviations the observed value is removed from the expected value. A bond length (or angle) with $|Z| > 2$ is considered an outlier worth inspection. RMSZ is the root-mean-square of all Z scores of the bond lengths (or angles).

Mol	Type	Chain	Res	Link	Bond lengths			Bond angles		
					Counts	RMSZ	$\# Z > 2$	Counts	RMSZ	$\# Z > 2$
15	SO4	B	301	-	4,4,4	0.34	0	6,6,6	0.07	0
19	MES	N	202	-	12,12,12	0.79	0	15,16,16	0.78	0
18	MPD	a	301	-	7,7,7	0.13	0	9,10,10	0.34	0
19	MES	b	201	-	12,12,12	0.69	0	15,16,16	0.36	0
15	SO4	P	301	-	4,4,4	0.34	0	6,6,6	0.07	0
19	MES	M	301	-	12,12,12	0.72	0	15,16,16	0.32	0
19	MES	Z	301	-	12,12,12	0.73	0	15,16,16	0.37	0
18	MPD	K	301	-	7,7,7	0.16	0	9,10,10	0.44	0

In the following table, the Chirals column lists the number of chiral outliers, the number of chiral centers analysed, the number of these observed in the model and the number defined in the Chemical Component Dictionary. Similar counts are reported in the Torsion and Rings columns. '-' means no outliers of that kind were identified.

Mol	Type	Chain	Res	Link	Chirals	Torsions	Rings
19	MES	N	202	-	-	2/6/14/14	0/1/1/1
18	MPD	a	301	-	-	0/5/5/5	-
19	MES	b	201	-	-	3/6/14/14	0/1/1/1
19	MES	M	301	-	-	3/6/14/14	0/1/1/1
19	MES	Z	301	-	-	1/6/14/14	0/1/1/1
18	MPD	K	301	-	-	2/5/5/5	-

There are no bond length outliers.

There are no bond angle outliers.

There are no chirality outliers.

5 of 11 torsion outliers are listed below:

Mol	Chain	Res	Type	Atoms
18	K	301	MPD	C2-C3-C4-O4
18	K	301	MPD	C2-C3-C4-C5
19	N	202	MES	C8-C7-N4-C5
19	Z	301	MES	C8-C7-N4-C5
19	b	201	MES	N4-C7-C8-S

There are no ring outliers.

3 monomers are involved in 6 short contacts:

Mol	Chain	Res	Type	Clashes	Symm-Clashes
19	N	202	MES	2	0
19	b	201	MES	3	0
18	K	301	MPD	1	0

5.7 Other polymers [i](#)

There are no such residues in this entry.

5.8 Polymer linkage issues [i](#)

There are no chain breaks in this entry.

6 Fit of model and data [i](#)

6.1 Protein, DNA and RNA chains [i](#)

In the following table, the column labelled ‘#RSRZ> 2’ contains the number (and percentage) of RSRZ outliers, followed by percent RSRZ outliers for the chain as percentile scores relative to all X-ray entries and entries of similar resolution. The OWAB column contains the minimum, median, 95th percentile and maximum values of the occupancy-weighted average B-factor per residue. The column labelled ‘Q< 0.9’ lists the number of (and percentage) of residues with an average occupancy less than 0.9.

Mol	Chain	Analysed	<RSRZ>	#RSRZ>2	OWAB(Å ²)	Q<0.9
1	A	250/250 (100%)	-0.51	2 (0%) 82 80	40, 50, 85, 118	0
1	O	250/250 (100%)	-0.51	2 (0%) 82 80	43, 57, 95, 125	0
2	B	244/258 (94%)	-0.41	4 (1%) 70 66	39, 55, 91, 148	0
2	P	244/258 (94%)	-0.43	4 (1%) 70 66	42, 58, 94, 136	0
3	C	240/254 (94%)	-0.48	0 100 100	41, 58, 108, 129	0
3	Q	237/254 (93%)	-0.34	4 (1%) 69 64	47, 67, 124, 145	0
4	D	235/260 (90%)	-0.56	0 100 100	41, 59, 84, 112	0
4	R	235/260 (90%)	-0.51	0 100 100	42, 63, 89, 117	0
5	E	231/234 (98%)	-0.49	0 100 100	43, 62, 91, 119	0
5	S	231/234 (98%)	-0.37	0 100 100	44, 68, 98, 120	0
6	F	243/288 (84%)	-0.55	0 100 100	39, 55, 89, 110	0
6	T	243/288 (84%)	-0.49	1 (0%) 88 86	42, 62, 101, 120	0
7	G	241/252 (95%)	-0.61	1 (0%) 88 86	37, 51, 80, 115	0
7	U	241/252 (95%)	-0.50	1 (0%) 88 86	42, 55, 80, 121	0
8	H	226/232 (97%)	-0.59	1 (0%) 88 86	38, 48, 71, 134	0
8	V	226/232 (97%)	-0.56	1 (0%) 88 86	41, 51, 73, 136	0
9	I	204/205 (99%)	-0.75	0 100 100	35, 47, 68, 90	0
9	W	204/205 (99%)	-0.72	1 (0%) 87 85	36, 48, 71, 95	0
10	J	195/198 (98%)	-0.46	0 100 100	37, 55, 89, 112	0
10	X	195/198 (98%)	-0.55	0 100 100	39, 56, 87, 118	0
11	K	210/212 (99%)	-0.43	5 (2%) 59 54	39, 52, 91, 114	0
11	Y	212/212 (100%)	-0.43	3 (1%) 73 69	40, 53, 91, 113	0
12	L	222/222 (100%)	-0.70	0 100 100	36, 48, 70, 96	0
12	Z	222/222 (100%)	-0.71	0 100 100	37, 49, 70, 95	0

Continued on next page...

Continued from previous page...

Mol	Chain	Analysed	<RSRZ>	#RSRZ>2	OWAB(Å ²)	Q<0.9
13	M	233/246 (94%)	-0.71	1 (0%) 88 86	37, 47, 65, 72	0
13	a	233/246 (94%)	-0.70	2 (0%) 81 78	36, 47, 63, 75	0
14	N	196/196 (100%)	-0.68	0 100 100	36, 44, 68, 95	0
14	b	196/196 (100%)	-0.66	0 100 100	36, 45, 68, 93	0
All	All	6339/6614 (95%)	-0.55	33 (0%) 87 85	35, 53, 90, 148	0

The worst 5 of 33 RSRZ outliers are listed below:

Mol	Chain	Res	Type	RSRZ
11	Y	137	TYR	3.9
8	V	223	ILE	3.7
11	K	139	VAL	3.6
1	O	249	ALA	3.5
2	P	219	ALA	3.4

6.2 Non-standard residues in protein, DNA, RNA chains [i](#)

There are no non-standard protein/DNA/RNA residues in this entry.

6.3 Carbohydrates [i](#)

There are no oligosaccharides in this entry.

6.4 Ligands [i](#)

In the following table, the Atoms column lists the number of modelled atoms in the group and the number defined in the chemical component dictionary. The B-factors column lists the minimum, median, 95th percentile and maximum values of B factors of atoms in the group. The column labelled 'Q< 0.9' lists the number of atoms with occupancy less than 0.9.

Mol	Type	Chain	Res	Atoms	RSCC	RSR	B-factors(Å ²)	Q<0.9
16	MG	N	201	1/1	0.85	0.12	145,145,145,145	0
16	MG	G	301	1/1	0.87	0.14	87,87,87,87	0
19	MES	M	301	12/12	0.87	0.18	120,131,141,142	0
18	MPD	a	301	8/8	0.89	0.15	88,96,102,104	0
19	MES	N	202	12/12	0.89	0.14	75,93,106,107	0
19	MES	Z	301	12/12	0.90	0.14	108,115,121,122	0
19	MES	b	201	12/12	0.90	0.13	77,92,102,104	0

Continued on next page...

Continued from previous page...

Mol	Type	Chain	Res	Atoms	RSCC	RSR	B-factors(\AA^2)	Q<0.9
17	CL	U	301	1/1	0.91	0.23	94,94,94,94	0
18	MPD	K	301	8/8	0.93	0.14	79,82,85,87	0
16	MG	W	301	1/1	0.93	0.41	161,161,161,161	0
17	CL	G	302	1/1	0.94	0.09	63,63,63,63	0
15	SO4	B	301	5/5	0.94	0.14	95,102,111,114	0
15	SO4	P	301	5/5	0.96	0.11	93,96,105,106	0

6.5 Other polymers [i](#)

There are no such residues in this entry.