



Full wwPDB X-ray Structure Validation Report ⓘ

Aug 28, 2025 – 04:18 PM EDT

PDB ID : 9ONG / pdb_00009ong
Title : Crystal structure of E. coli ApaH in complex with Ap4AG
Authors : Nuthanakanti, A.; Serganov, A.
Deposited on : 2025-05-15
Resolution : 1.89 Å(reported)

This is a Full wwPDB X-ray Structure Validation Report for a publicly released PDB entry.

We welcome your comments at validation@mail.wwpdb.org

A user guide is available at

<https://www.wwpdb.org/validation/2017/XrayValidationReportHelp>

with specific help available everywhere you see the ⓘ symbol.

The types of validation reports are described at

<http://www.wwpdb.org/validation/2017/FAQs#types>.

The following versions of software and data (see [references ⓘ](#)) were used in the production of this report:

MolProbity : 4-5-2 with Phenix2.0rc1
Mogul : 2022.3.0, CSD as543be (2022)
Xtriage (Phenix) : 2.0rc1
EDS : 3.0
Percentile statistics : 20231227.v01 (using entries in the PDB archive December 27th 2023)
CCP4 : 9.0.006 (Gargrove)
Density-Fitness : 1.0.12
Ideal geometry (proteins) : Engh & Huber (2001)
Ideal geometry (DNA, RNA) : Parkinson et al. (1996)
Validation Pipeline (wwPDB-VP) : 2.45.1

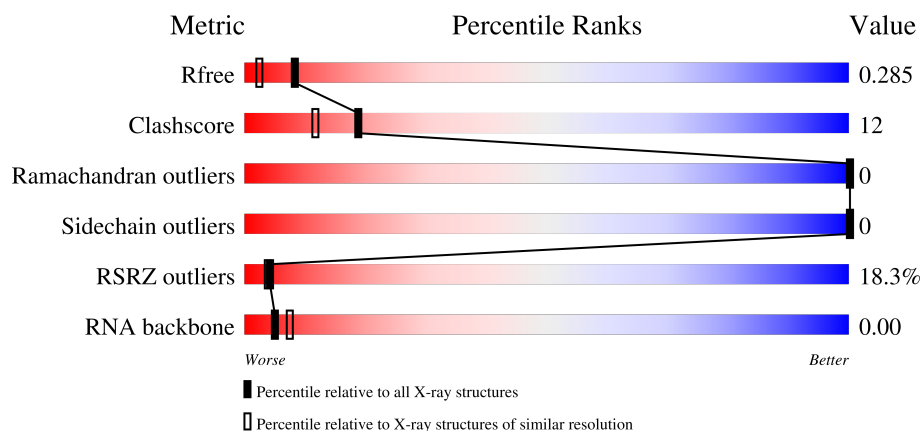
1 Overall quality at a glance

The following experimental techniques were used to determine the structure:

X-RAY DIFFRACTION

The reported resolution of this entry is 1.89 Å.

Percentile scores (ranging between 0-100) for global validation metrics of the entry are shown in the following graphic. The table shows the number of entries on which the scores are based.



Metric	Whole archive (#Entries)	Similar resolution (#Entries, resolution range(Å))
R_{free}	164625	7293 (1.90-1.90)
Clashscore	180529	8090 (1.90-1.90)
Ramachandran outliers	177936	8022 (1.90-1.90)
Sidechain outliers	177891	8022 (1.90-1.90)
RSRZ outliers	164620	7292 (1.90-1.90)
RNA backbone	3690	1046 (2.30-1.50)

The table below summarises the geometric issues observed across the polymeric chains and their fit to the electron density. The red, orange, yellow and green segments of the lower bar indicate the fraction of residues that contain outliers for ≥ 3 , 2, 1 and 0 types of geometric quality criteria respectively. A grey segment represents the fraction of residues that are not modelled. The numeric value for each fraction is indicated below the corresponding segment, with a dot representing fractions $\leq 5\%$. The upper red bar (where present) indicates the fraction of residues that have poor fit to the electron density. The numeric value is given above the bar.

Mol	Chain	Length	Quality of chain
1	A	286	<div> <div>17%</div> <div>75%</div> <div>19%</div> <div>6%</div> </div>
1	B	286	<div> <div>17%</div> <div>74%</div> <div>20%</div> <div>6%</div> </div>
2	C	2	<div> <div>50%</div> <div>50%</div> <div>50%</div> </div>
2	D	2	<div> <div>50%</div> <div>50%</div> </div>

2 Entry composition

There are 6 unique types of molecules in this entry. The entry contains 4678 atoms, of which 17 are hydrogens and 0 are deuteriums.

In the tables below, the ZeroOcc column contains the number of atoms modelled with zero occupancy, the AltConf column contains the number of residues with at least one atom in alternate conformation and the Trace column contains the number of residues modelled with at most 2 atoms.

- Molecule 1 is a protein called Bis(5'-nucleosyl)-tetraphosphatase [symmetrical].

Mol	Chain	Residues	Atoms					ZeroOcc	AltConf	Trace
1	A	269	Total	C	N	O	S	0	1	0
			2102	1353	356	382	11			
1	B	269	Total	C	N	O	S	0	3	0
			2126	1371	359	384	12			

There are 12 discrepancies between the modelled and reference sequences:

Chain	Residue	Modelled	Actual	Comment	Reference
A	281	HIS	-	expression tag	UNP P05637
A	282	HIS	-	expression tag	UNP P05637
A	283	HIS	-	expression tag	UNP P05637
A	284	HIS	-	expression tag	UNP P05637
A	285	HIS	-	expression tag	UNP P05637
A	286	HIS	-	expression tag	UNP P05637
B	281	HIS	-	expression tag	UNP P05637
B	282	HIS	-	expression tag	UNP P05637
B	283	HIS	-	expression tag	UNP P05637
B	284	HIS	-	expression tag	UNP P05637
B	285	HIS	-	expression tag	UNP P05637
B	286	HIS	-	expression tag	UNP P05637

- Molecule 2 is a RNA chain called RNA Ap4AG.

Mol	Chain	Residues	Atoms					ZeroOcc	AltConf	Trace
2	C	2	Total	C	N	O	P	0	0	0
			39	10	5	19	5			
2	D	2	Total	C	N	O	P	0	0	0
			39	10	5	19	5			

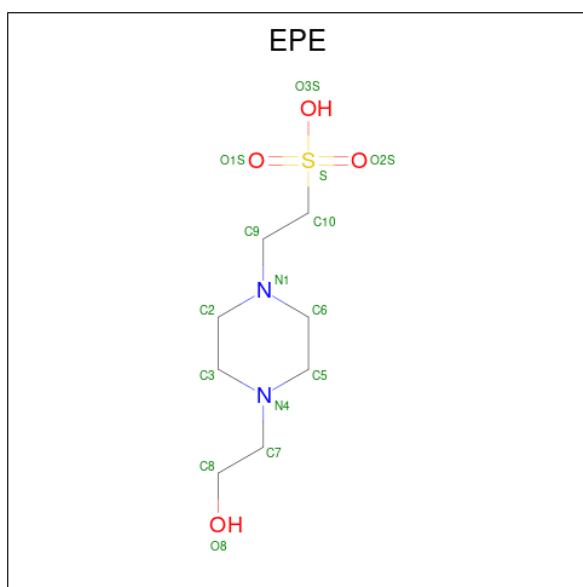
- Molecule 3 is MANGANESE (II) ION (CCD ID: MN) (formula: Mn).

Mol	Chain	Residues	Atoms	ZeroOcc	AltConf
3	A	2	Total Mn 2 2	0	1
3	B	2	Total Mn 2 2	0	1

- Molecule 4 is MAGNESIUM ION (CCD ID: MG) (formula: Mg).

Mol	Chain	Residues	Atoms	ZeroOcc	AltConf
4	A	1	Total Mg 1 1	0	1
4	B	1	Total Mg 1 1	0	1

- Molecule 5 is 4-(2-HYDROXYETHYL)-1-PIPERAZINE ETHANESULFONIC ACID (CCD ID: EPE) (formula: C₈H₁₈N₂O₄S).



Mol	Chain	Residues	Atoms	ZeroOcc	AltConf
5	B	1	Total C H N O S 32 8 17 2 4 1	0	0

- Molecule 6 is water.

Mol	Chain	Residues	Atoms	ZeroOcc	AltConf
6	A	177	Total O 177 177	0	0
6	B	150	Total O 150 150	0	0

Continued on next page...

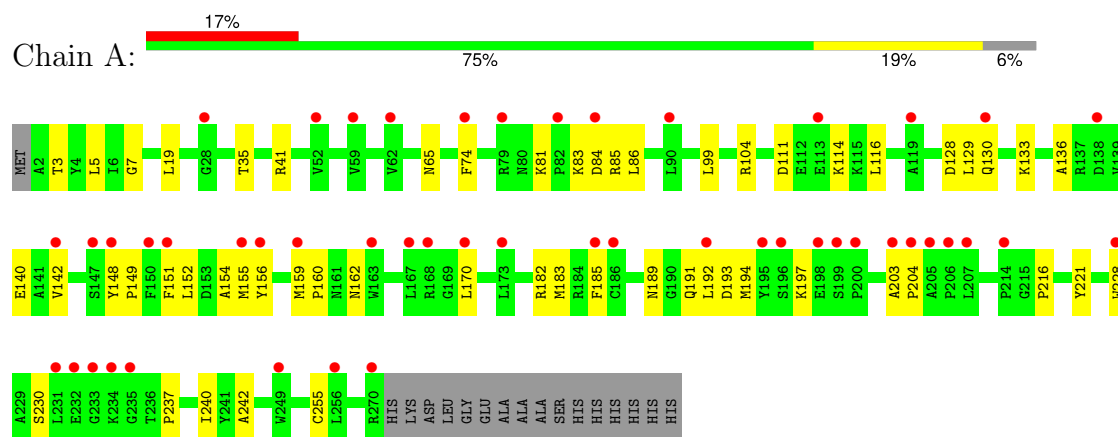
Continued from previous page...

Mol	Chain	Residues	Atoms		ZeroOcc	AltConf
6	C	4	Total 4	O 4	0	0
6	D	3	Total 3	O 3	0	0

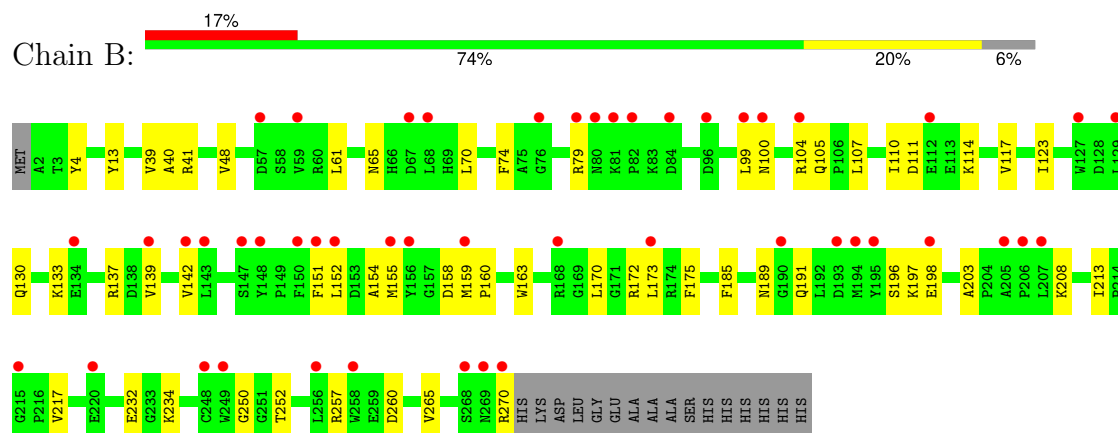
3 Residue-property plots

These plots are drawn for all protein, RNA, DNA and oligosaccharide chains in the entry. The first graphic for a chain summarises the proportions of the various outlier classes displayed in the second graphic. The second graphic shows the sequence view annotated by issues in geometry and electron density. Residues are color-coded according to the number of geometric quality criteria for which they contain at least one outlier: green = 0, yellow = 1, orange = 2 and red = 3 or more. A red dot above a residue indicates a poor fit to the electron density ($RSRZ > 2$). Stretches of 2 or more consecutive residues without any outlier are shown as a green connector. Residues present in the sample, but not in the model, are shown in grey.

- Molecule 1: Bis(5'-nucleosyl)-tetrphosphatase [symmetrical]



- Molecule 1: Bis(5'-nucleosyl)-tetrphosphatase [symmetrical]



- Molecule 2: RNA Ap4AG



- Molecule 2: RNA Ap4AG



4 Data and refinement statistics

Property	Value	Source
Space group	C 1 2 1	Depositor
Cell constants a, b, c, α , β , γ	166.58Å 55.04Å 120.58Å 90.00° 130.23° 90.00°	Depositor
Resolution (Å)	50.51 – 1.89 50.51 – 1.89	Depositor EDS
% Data completeness (in resolution range)	94.7 (50.51-1.89) 94.3 (50.51-1.89)	Depositor EDS
R_{merge}	0.19	Depositor
R_{sym}	(Not available)	Depositor
$\langle I/\sigma(I) \rangle$ ¹	1.04 (at 1.90Å)	Xtriage
Refinement program	PHENIX 1.20.1_4487	Depositor
R, R_{free}	0.241 , 0.284 0.242 , 0.285	Depositor DCC
R_{free} test set	1967 reflections (2.94%)	wwPDB-VP
Wilson B-factor (Å ²)	32.3	Xtriage
Anisotropy	0.128	Xtriage
Bulk solvent k_{sol} (e/Å ³), B_{sol} (Å ²)	0.34 , 34.2	EDS
L-test for twinning ²	$\langle L \rangle = 0.51$, $\langle L^2 \rangle = 0.35$	Xtriage
Estimated twinning fraction	No twinning to report.	Xtriage
F_o, F_c correlation	0.94	EDS
Total number of atoms	4678	wwPDB-VP
Average B, all atoms (Å ²)	36.0	wwPDB-VP

Xtriage's analysis on translational NCS is as follows: *The largest off-origin peak in the Patterson function is 6.37% of the height of the origin peak. No significant pseudotranslation is detected.*

¹Intensities estimated from amplitudes.

²Theoretical values of $\langle |L| \rangle$, $\langle L^2 \rangle$ for acentric reflections are 0.5, 0.333 respectively for untwinned datasets, and 0.375, 0.2 for perfectly twinned datasets.

5 Model quality [i](#)

5.1 Standard geometry [i](#)

Bond lengths and bond angles in the following residue types are not validated in this section: MN, EPE, MG, B4P

The Z score for a bond length (or angle) is the number of standard deviations the observed value is removed from the expected value. A bond length (or angle) with $|Z| > 5$ is considered an outlier worth inspection. RMSZ is the root-mean-square of all Z scores of the bond lengths (or angles).

Mol	Chain	Bond lengths		Bond angles	
		RMSZ	$\# Z > 5$	RMSZ	$\# Z > 5$
1	A	0.42	0/2162	0.58	0/2948
1	B	0.38	0/2194	0.60	0/2990
2	C	2.08	0/3	0.93	0/3
2	D	0.72	0/3	0.35	0/3
All	All	0.41	0/4362	0.59	0/5944

There are no bond length outliers.

There are no bond angle outliers.

There are no chirality outliers.

There are no planarity outliers.

5.2 Too-close contacts [i](#)

In the following table, the Non-H and H(model) columns list the number of non-hydrogen atoms and hydrogen atoms in the chain respectively. The H(added) column lists the number of hydrogen atoms added and optimized by MolProbity. The Clashes column lists the number of clashes within the asymmetric unit, whereas Symm-Clashes lists symmetry-related clashes.

Mol	Chain	Non-H	H(model)	H(added)	Clashes	Symm-Clashes
1	A	2102	0	2032	45	0
1	B	2126	0	2063	52	0
2	C	39	0	11	6	0
2	D	39	0	11	7	0
3	A	2	0	0	0	0
3	B	2	0	0	0	0
4	A	1	0	0	0	0
4	B	1	0	0	0	0
5	B	15	17	17	0	0

Continued on next page...

Continued from previous page...

Mol	Chain	Non-H	H(model)	H(added)	Clashes	Symm-Clashes
6	A	177	0	0	4	0
6	B	150	0	0	1	0
6	C	4	0	0	2	0
6	D	3	0	0	1	0
All	All	4661	17	4134	99	0

The all-atom clashscore is defined as the number of clashes found per 1000 atoms (including hydrogen atoms). The all-atom clashscore for this structure is 12.

All (99) close contacts within the same asymmetric unit are listed below, sorted by their clash magnitude.

Atom-1	Atom-2	Interatomic distance (Å)	Clash overlap (Å)
1:A:159:MET:HE3	1:A:160:PRO:HA	1.34	1.05
1:A:151:PHE:CE1	1:A:155:MET:HB3	2.06	0.90
1:B:196:SER:HB3	1:B:198:GLU:OE2	1.72	0.89
1:B:133:LYS:O	1:B:137:ARG:HD3	1.77	0.85
1:A:189:ASN:OD1	1:A:191:GLN:HG3	1.78	0.84
1:B:142:VAL:HB	1:B:151[B]:PHE:CD2	2.15	0.81
2:C:1:B4P:O1G	6:C:401:HOH:O	1.97	0.80
1:A:65:ASN:ND2	2:C:1:B4P:O1A	2.18	0.76
1:B:151[A]:PHE:CD1	1:B:173:LEU:HD21	2.19	0.76
1:A:142:VAL:HG21	1:A:151:PHE:HB2	1.67	0.76
2:D:1:B4P:H52B	2:D:1:B4P:O1B	1.86	0.76
1:B:232:GLU:HB2	1:B:234:LYS:HE3	1.69	0.73
1:B:151[A]:PHE:HD1	1:B:173:LEU:HD21	1.53	0.71
1:A:142:VAL:CG2	1:A:151:PHE:HB2	2.21	0.71
1:A:189:ASN:ND2	1:A:191:GLN:OE1	2.26	0.69
1:B:123:ILE:HG21	1:B:217:VAL:HG21	1.77	0.67
1:B:197:LYS:HZ2	2:D:1:B4P:PB	2.17	0.67
1:A:136:ALA:O	1:A:140:GLU:HG3	1.97	0.64
1:B:208:LYS:CG	1:B:213:ILE:HD11	2.28	0.63
1:A:183:MET:HG3	1:A:192:LEU:HD22	1.80	0.63
1:B:130:GLN:NE2	1:B:130:GLN:HA	2.14	0.63
1:A:74:PHE:CD1	1:A:99:LEU:HD12	2.35	0.61
1:B:189:ASN:OD1	1:B:191:GLN:HG3	2.00	0.61
2:C:1:B4P:H52B	2:C:1:B4P:O2B	2.00	0.61
1:A:155:MET:HE3	1:A:156:TYR:CE1	2.36	0.60
1:A:85:ARG:HA	6:A:518:HOH:O	2.02	0.60
1:A:162:ASN:OD1	1:A:191:GLN:HG2	2.01	0.60
1:A:193:ASP:OD2	1:B:79:ARG:NH2	2.22	0.60
2:D:1:B4P:PG	6:D:401:HOH:O	2.60	0.59

Continued on next page...

Continued from previous page...

Atom-1	Atom-2	Interatomic distance (Å)	Clash overlap (Å)
1:B:232:GLU:CB	1:B:234:LYS:HE3	2.32	0.59
1:A:185:PHE:CZ	1:A:203:ALA:HB2	2.38	0.58
2:C:1:B4P:PG	6:C:401:HOH:O	2.61	0.58
1:B:74:PHE:CD1	1:B:99:LEU:HD12	2.38	0.58
1:B:208:LYS:HG3	1:B:213:ILE:HD11	1.85	0.57
1:A:242:ALA:O	6:A:401:HOH:O	2.18	0.57
1:B:158:ASP:O	1:B:159:MET:HE2	2.05	0.57
1:B:198:GLU:H	1:B:198:GLU:CD	2.14	0.56
1:B:252:THR:HB	1:B:265:VAL:CG1	2.36	0.56
1:A:152:LEU:HA	1:A:155:MET:HG2	1.88	0.55
1:A:129:LEU:HD22	1:A:221:TYR:CE1	2.41	0.55
1:A:148:TYR:CD1	1:A:149:PRO:HD3	2.42	0.55
1:A:154:ALA:HB1	1:A:170:LEU:HD22	1.89	0.54
1:B:152:LEU:O	1:B:155[A]:MET:HG2	2.08	0.53
1:A:152:LEU:O	1:A:155:MET:HG2	2.08	0.53
1:B:250:GLY:N	1:B:270:ARG:HD3	2.24	0.53
1:A:129:LEU:HG	1:A:133:LYS:HD2	1.91	0.52
1:A:41:ARG:NH1	2:C:1:B4P:O2G	2.33	0.49
1:B:172:ARG:NE	6:B:407:HOH:O	2.40	0.49
1:B:100:ASN:O	1:B:104:ARG:HG3	2.12	0.49
1:B:139:VAL:O	1:B:142:VAL:HG22	2.12	0.49
1:B:13:TYR:HB2	1:B:48:VAL:HG23	1.95	0.49
1:A:104[B]:ARG:NH1	6:A:418:HOH:O	2.45	0.49
1:A:151:PHE:CD1	1:A:151:PHE:C	2.90	0.48
1:A:152:LEU:O	1:A:155:MET:CG	2.61	0.48
1:B:208:LYS:HG3	1:B:213:ILE:CD1	2.43	0.48
1:A:128:ASP:HA	1:A:216:PRO:HG2	1.97	0.47
1:B:151[A]:PHE:HE1	1:B:173:LEU:HG	1.79	0.47
1:A:228:TRP:CD1	1:A:230:SER:HG	2.33	0.47
1:B:41:ARG:NH1	2:D:1:B4P:O2G	2.33	0.47
1:A:111:ASP:OD2	1:A:114:LYS:HE2	2.15	0.46
1:B:40:ALA:O	1:B:41:ARG:HB2	2.15	0.46
1:B:61:LEU:HD23	1:B:105:GLN:HG3	1.98	0.46
1:B:163:TRP:HB2	1:B:175:PHE:CZ	2.51	0.46
1:B:250:GLY:CA	1:B:270:ARG:HD3	2.46	0.46
1:B:137:ARG:N	1:B:137:ARG:CD	2.79	0.46
1:A:182:ARG:CB	1:A:194:MET:HE1	2.46	0.46
1:A:155:MET:CE	1:A:156:TYR:CE1	2.98	0.45
1:B:197:LYS:HD3	2:D:1:B4P:O1B	2.15	0.45
1:A:197:LYS:HZ2	2:C:1:B4P:PB	2.40	0.45
1:A:237:PRO:HG2	1:A:240:ILE:HG13	1.99	0.45

Continued on next page...

Continued from previous page...

Atom-1	Atom-2	Interatomic distance (Å)	Clash overlap (Å)
1:A:191:GLN:NE2	6:A:424:HOH:O	2.49	0.45
1:A:5:LEU:HD21	1:A:116:LEU:HD21	1.98	0.45
1:B:4:TYR:CE1	1:B:257:ARG:HD3	2.52	0.45
1:B:110:ILE:HG12	1:B:117:VAL:HG22	1.99	0.44
1:B:70:LEU:HD21	1:B:99:LEU:CD2	2.48	0.44
1:B:39:VAL:O	1:B:40:ALA:HB3	2.18	0.44
1:B:107:LEU:HD11	1:B:139:VAL:CG1	2.47	0.44
1:A:84:ASP:HB3	1:A:86:LEU:HG	2.00	0.44
1:A:81:LYS:HD2	1:A:83:LYS:HE3	2.00	0.44
1:B:70:LEU:HD21	1:B:99:LEU:HD21	2.01	0.43
1:B:189:ASN:CG	1:B:191:GLN:HG3	2.42	0.43
1:B:197:LYS:NZ	2:D:1:B4P:PB	2.88	0.43
1:A:3:THR:HG21	1:A:114:LYS:HE3	2.00	0.42
1:A:7:GLY:HA2	1:A:35:THR:OG1	2.20	0.42
1:A:182:ARG:HB2	1:A:194:MET:HE1	2.01	0.42
1:B:185:PHE:CZ	1:B:203:ALA:HB2	2.55	0.42
1:B:154:ALA:HB1	1:B:170:LEU:HD22	1.99	0.42
1:B:159:MET:HB3	1:B:160:PRO:HA	2.01	0.42
1:B:65:ASN:ND2	2:D:1:B4P:O5E	2.52	0.42
1:A:19:LEU:HD21	1:A:255:CYS:HB2	2.02	0.42
1:A:148:TYR:CG	1:A:149:PRO:HD3	2.55	0.41
1:A:204:PRO:HG2	1:B:79:ARG:HD2	2.02	0.41
1:B:111:ASP:CG	1:B:114:LYS:HG3	2.45	0.41
1:B:257:ARG:HG2	1:B:260:ASP:OD1	2.21	0.41
1:B:130:GLN:NE2	1:B:130:GLN:CA	2.79	0.40
1:A:130:GLN:HA	1:A:130:GLN:NE2	2.36	0.40
1:A:204:PRO:CG	1:B:79:ARG:HD2	2.52	0.40
1:B:189:ASN:ND2	1:B:191:GLN:HG3	2.37	0.40

There are no symmetry-related clashes.

5.3 Torsion angles [i](#)

5.3.1 Protein backbone [i](#)

In the following table, the Percentiles column shows the percent Ramachandran outliers of the chain as a percentile score with respect to all X-ray entries followed by that with respect to entries of similar resolution.

The Analysed column shows the number of residues for which the backbone conformation was analysed, and the total number of residues.

Mol	Chain	Analysed	Favoured	Allowed	Outliers	Percentiles	
1	A	268/286 (94%)	260 (97%)	8 (3%)	0	100	100
1	B	270/286 (94%)	265 (98%)	5 (2%)	0	100	100
All	All	538/572 (94%)	525 (98%)	13 (2%)	0	100	100

There are no Ramachandran outliers to report.

5.3.2 Protein sidechains ⓘ

In the following table, the Percentiles column shows the percent sidechain outliers of the chain as a percentile score with respect to all X-ray entries followed by that with respect to entries of similar resolution.

The Analysed column shows the number of residues for which the sidechain conformation was analysed, and the total number of residues.

Mol	Chain	Analysed	Rotameric	Outliers	Percentiles	
1	A	217/239 (91%)	217 (100%)	0	100	100
1	B	222/239 (93%)	222 (100%)	0	100	100
All	All	439/478 (92%)	439 (100%)	0	100	100

There are no protein residues with a non-rotameric sidechain to report.

Sometimes sidechains can be flipped to improve hydrogen bonding and reduce clashes. All (4) such sidechains are listed below:

Mol	Chain	Res	Type
1	A	69	HIS
1	A	130	GLN
1	B	80	ASN
1	B	130	GLN

5.3.3 RNA ⓘ

Mol	Chain	Analysed	Backbone Outliers	Pucker Outliers
2	C	0/2	-	-
2	D	0/2	-	-
All	All	0/4	-	-

There are no RNA backbone outliers to report.

There are no RNA pucker outliers to report.

5.4 Non-standard residues in protein, DNA, RNA chains [i](#)

There are no non-standard protein/DNA/RNA residues in this entry.

5.5 Carbohydrates [i](#)

There are no oligosaccharides in this entry.

5.6 Ligand geometry [i](#)

Of 7 ligands modelled in this entry, 6 are monoatomic - leaving 1 for Mogul analysis.

In the following table, the Counts columns list the number of bonds (or angles) for which Mogul statistics could be retrieved, the number of bonds (or angles) that are observed in the model and the number of bonds (or angles) that are defined in the Chemical Component Dictionary. The Link column lists molecule types, if any, to which the group is linked. The Z score for a bond length (or angle) is the number of standard deviations the observed value is removed from the expected value. A bond length (or angle) with $|Z| > 2$ is considered an outlier worth inspection. RMSZ is the root-mean-square of all Z scores of the bond lengths (or angles).

Mol	Type	Chain	Res	Link	Bond lengths			Bond angles		
					Counts	RMSZ	$\# Z > 2$	Counts	RMSZ	$\# Z > 2$
5	EPE	B	301	-	15,15,15	0.85	1 (6%)	19,20,20	1.66	3 (15%)

In the following table, the Chirals column lists the number of chiral outliers, the number of chiral centers analysed, the number of these observed in the model and the number defined in the Chemical Component Dictionary. Similar counts are reported in the Torsion and Rings columns. '-' means no outliers of that kind were identified.

Mol	Type	Chain	Res	Link	Chirals	Torsions	Rings
5	EPE	B	301	-	-	2/9/19/19	0/1/1/1

All (1) bond length outliers are listed below:

Mol	Chain	Res	Type	Atoms	Z	Observed(Å)	Ideal(Å)
5	B	301	EPE	C10-S	2.93	1.81	1.77

All (3) bond angle outliers are listed below:

Mol	Chain	Res	Type	Atoms	Z	Observed(°)	Ideal(°)
5	B	301	EPE	C5-N4-C3	3.78	116.99	108.84
5	B	301	EPE	O1S-S-C10	3.15	111.49	106.73
5	B	301	EPE	C7-N4-C3	2.80	118.70	111.24

There are no chirality outliers.

All (2) torsion outliers are listed below:

Mol	Chain	Res	Type	Atoms
5	B	301	EPE	C8-C7-N4-C3
5	B	301	EPE	N4-C7-C8-O8

There are no ring outliers.

No monomer is involved in short contacts.

5.7 Other polymers [i](#)

There are no such residues in this entry.

5.8 Polymer linkage issues [i](#)

There are no chain breaks in this entry.

6 Fit of model and data

6.1 Protein, DNA and RNA chains

In the following table, the column labelled ‘#RSRZ> 2’ contains the number (and percentage) of RSRZ outliers, followed by percent RSRZ outliers for the chain as percentile scores relative to all X-ray entries and entries of similar resolution. The OWAB column contains the minimum, median, 95th percentile and maximum values of the occupancy-weighted average B-factor per residue. The column labelled ‘Q< 0.9’ lists the number of (and percentage) of residues with an average occupancy less than 0.9.

Mol	Chain	Analysed	<RSRZ>	#RSRZ>2	OWAB(Å ²)	Q<0.9
1	A	269/286 (94%)	1.25	49 (18%) 4 4	16, 33, 51, 69	1 (0%)
1	B	269/286 (94%)	1.28	48 (17%) 4 4	20, 35, 48, 68	3 (1%)
2	C	1/2 (50%)	3.22	1 (100%) 0 0	30, 30, 30, 30	1 (100%)
2	D	1/2 (50%)	2.83	1 (100%) 0 0	39, 39, 39, 39	1 (100%)
All	All	540/576 (93%)	1.27	99 (18%) 4 4	16, 34, 50, 69	6 (1%)

All (99) RSRZ outliers are listed below:

Mol	Chain	Res	Type	RSRZ
1	B	150[A]	PHE	5.8
1	B	173	LEU	4.5
1	A	147	SER	4.3
1	A	155	MET	3.9
1	A	204	PRO	3.8
1	A	156	TYR	3.6
1	A	151	PHE	3.5
1	B	155[A]	MET	3.4
1	B	156	TYR	3.3
1	B	151[A]	PHE	3.3
1	A	28	GLY	3.2
2	C	2	G	3.2
1	A	150	PHE	3.2
1	A	203	ALA	3.2
1	A	195	TYR	3.1
1	B	147	SER	3.0
1	A	196	SER	2.9
1	B	205	ALA	2.9
1	B	249	TRP	2.9
1	A	90	LEU	2.9
1	B	190	GLY	2.9

Continued on next page...

Continued from previous page...

Mol	Chain	Res	Type	RSRZ
1	B	248	CYS	2.9
2	D	2	G	2.8
1	A	82	PRO	2.8
1	A	185	PHE	2.8
1	B	142	VAL	2.8
1	B	143	LEU	2.7
1	A	79	ARG	2.7
1	B	79	ARG	2.7
1	A	186	CYS	2.7
1	B	198	GLU	2.7
1	B	84	ASP	2.7
1	A	74	PHE	2.7
1	A	200	PRO	2.7
1	A	214	PRO	2.7
1	B	256	LEU	2.7
1	A	142	VAL	2.6
1	A	206	PRO	2.6
1	B	220	GLU	2.6
1	B	99	LEU	2.6
1	A	173	LEU	2.6
1	B	195	TYR	2.5
1	B	129	LEU	2.5
1	B	81	LYS	2.5
1	A	270	ARG	2.5
1	A	207	LEU	2.5
1	B	207	LEU	2.5
1	A	205	ALA	2.5
1	A	198	GLU	2.4
1	B	68	LEU	2.4
1	A	168	ARG	2.4
1	B	258	TRP	2.4
1	B	96	ASP	2.4
1	A	130	GLN	2.4
1	A	167	LEU	2.3
1	A	249	TRP	2.3
1	B	139	VAL	2.3
1	B	193	ASP	2.3
1	A	232	GLU	2.3
1	A	256	LEU	2.3
1	B	76	GLY	2.3
1	B	82	PRO	2.3
1	B	194	MET	2.3

Continued on next page...

Continued from previous page...

Mol	Chain	Res	Type	RSRZ
1	A	52	VAL	2.3
1	B	112	GLU	2.3
1	B	80	ASN	2.2
1	A	228	TRP	2.2
1	A	138	ASP	2.2
1	B	134	GLU	2.2
1	B	67	ASP	2.2
1	B	268	SER	2.2
1	B	270	ARG	2.2
1	A	119	ALA	2.2
1	B	104	ARG	2.2
1	A	163	TRP	2.2
1	A	234	LYS	2.2
1	B	100	ASN	2.2
1	A	199	SER	2.1
1	A	59	VAL	2.1
1	A	148	TYR	2.1
1	B	168	ARG	2.1
1	B	152	LEU	2.1
1	B	127	TRP	2.1
1	B	148	TYR	2.1
1	A	192	LEU	2.1
1	A	113	GLU	2.1
1	B	269	ASN	2.1
1	A	233	GLY	2.1
1	A	235	GLY	2.1
1	A	84	ASP	2.0
1	B	57	ASP	2.0
1	A	62	VAL	2.0
1	A	170	LEU	2.0
1	A	231	LEU	2.0
1	A	159	MET	2.0
1	B	215	GLY	2.0
1	B	59	VAL	2.0
1	B	206	PRO	2.0
1	B	159	MET	2.0

6.2 Non-standard residues in protein, DNA, RNA chains ⓘ

There are no non-standard protein/DNA/RNA residues in this entry.

6.3 Carbohydrates [i](#)

There are no oligosaccharides in this entry.

6.4 Ligands [i](#)

In the following table, the Atoms column lists the number of modelled atoms in the group and the number defined in the chemical component dictionary. The B-factors column lists the minimum, median, 95th percentile and maximum values of B factors of atoms in the group. The column labelled 'Q< 0.9' lists the number of atoms with occupancy less than 0.9.

Mol	Type	Chain	Res	Atoms	RSCC	RSR	B-factors(\AA^2)	Q<0.9
5	EPE	B	301	15/15	0.77	0.15	50,64,76,77	0
3	MN	B	304	1/1	0.97	0.04	29,29,29,29	1
4	MG	A	302[B]	1/1	0.98	0.03	25,25,25,25	1
3	MN	A	301[A]	1/1	0.98	0.03	25,25,25,25	1
3	MN	B	302[A]	1/1	0.99	0.03	33,33,33,33	1
4	MG	B	303[B]	1/1	0.99	0.02	33,33,33,33	1
3	MN	A	303	1/1	0.99	0.04	26,26,26,26	1

6.5 Other polymers [i](#)

There are no such residues in this entry.