



Full wwPDB EM Validation Report ⓘ

Mar 8, 2026 – 05:35 PM UTC

PDB ID : 9NEL / pdb_00009nel
EMDB ID : EMD-49326
Title : The flexible portion of Cryo-EM structure of Herpesvirus Helicase-Primase complex with amenamevir
Authors : Yao, Q.; Yu, X.
Deposited on : 2025-02-19
Resolution : 3.20 Å(reported)

This is a Full wwPDB EM Validation Report for a publicly released PDB entry.

We welcome your comments at validation@mail.wwpdb.org

A user guide is available at

<https://www.wwpdb.org/validation/2017/EMValidationReportHelp>
with specific help available everywhere you see the ⓘ symbol.

The types of validation reports are described at

<http://www.wwpdb.org/validation/2017/FAQs#types>.

The following versions of software and data (see [references ⓘ](#)) were used in the production of this report:

EMDB validation analysis : 0.0.1.dev132
Mogul : 2022.3.0, CSD as543be (2022)
MolProbity : 4-5-2 with Phenix2.0
Buster-report : wwPDB partial adaption of 1.1.7 (2018)
Percentile statistics : 20250101.v01 (using entries in the PDB archive January 1st 2025)
EM percentile statistics : 202505.v01 (Using data in the EMDB archive up until May 2025)
MapQ : 1.9.13
Ideal geometry (proteins) : Engh & Huber (2001)
Ideal geometry (DNA, RNA) : Parkinson et al. (1996)
Validation Pipeline (wwPDB-VP) : 2.49

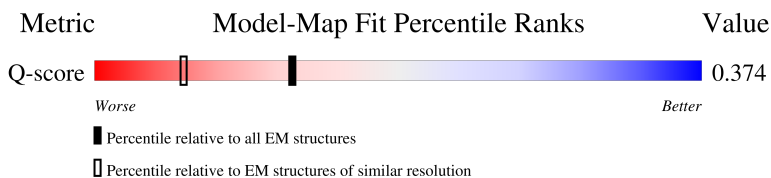
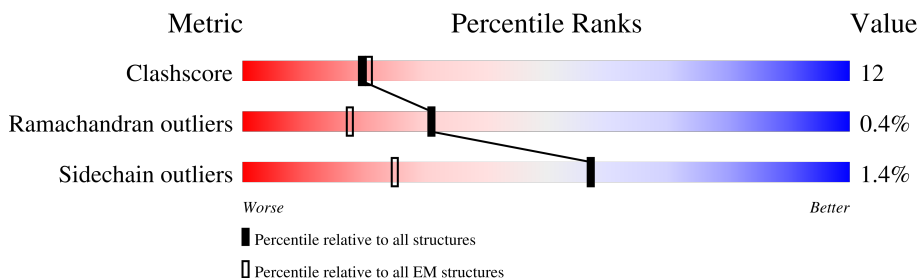
1 Overall quality at a glance

The following experimental techniques were used to determine the structure:

ELECTRON MICROSCOPY


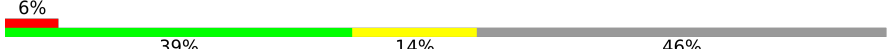
The reported resolution of this entry is 3.20 Å.

Percentile scores (ranging between 0-100) for global validation metrics of the entry are shown in the following graphic. The table shows the number of entries on which the scores are based.



Metric	Whole archive (#Entries)	EM structures (#Entries)	Similar EM resolution (#Entries, resolution range(Å))
Clashscore	229148	23984	-
Ramachandran outliers	224038	23583	-
Sidechain outliers	223484	23102	-
Q-score	-	25397	15020 (2.70 - 3.70)

The table below summarises the geometric issues observed across the polymeric chains and their fit to the map. The red, orange, yellow and green segments of the bar indicate the fraction of residues that contain outliers for ≥ 3 , 2, 1 and 0 types of geometric quality criteria respectively. A grey segment represents the fraction of residues that are not modelled. The numeric value for each fraction is indicated below the corresponding segment, with a dot representing fractions $\leq 5\%$. The upper red bar (where present) indicates the fraction of residues that have poor fit to the EM map (all-atom inclusion $< 40\%$). The numeric value is given above the bar.

Mol	Chain	Length	Quality of chain
1	A	1058	
2	B	843	

2 Entry composition [i](#)

There are 3 unique types of molecules in this entry. The entry contains 6695 atoms, of which 0 are hydrogens and 0 are deuteriums.

In the tables below, the AltConf column contains the number of residues with at least one atom in alternate conformation and the Trace column contains the number of residues modelled with at most 2 atoms.

- Molecule 1 is a protein called DNA primase.

Mol	Chain	Residues	Atoms					AltConf	Trace
			Total	C	N	O	S		
1	A	391	3047	1939	525	569	14	0	0

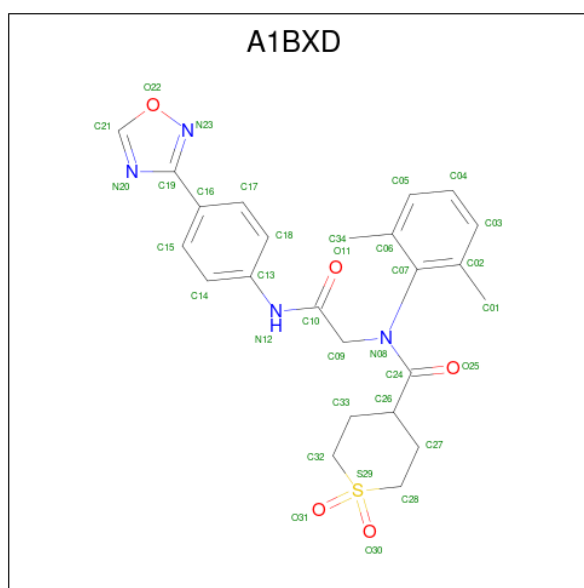
There is a discrepancy between the modelled and reference sequences:

Chain	Residue	Modelled	Actual	Comment	Reference
A	260	THR	GLY	conflict	UNP P10236

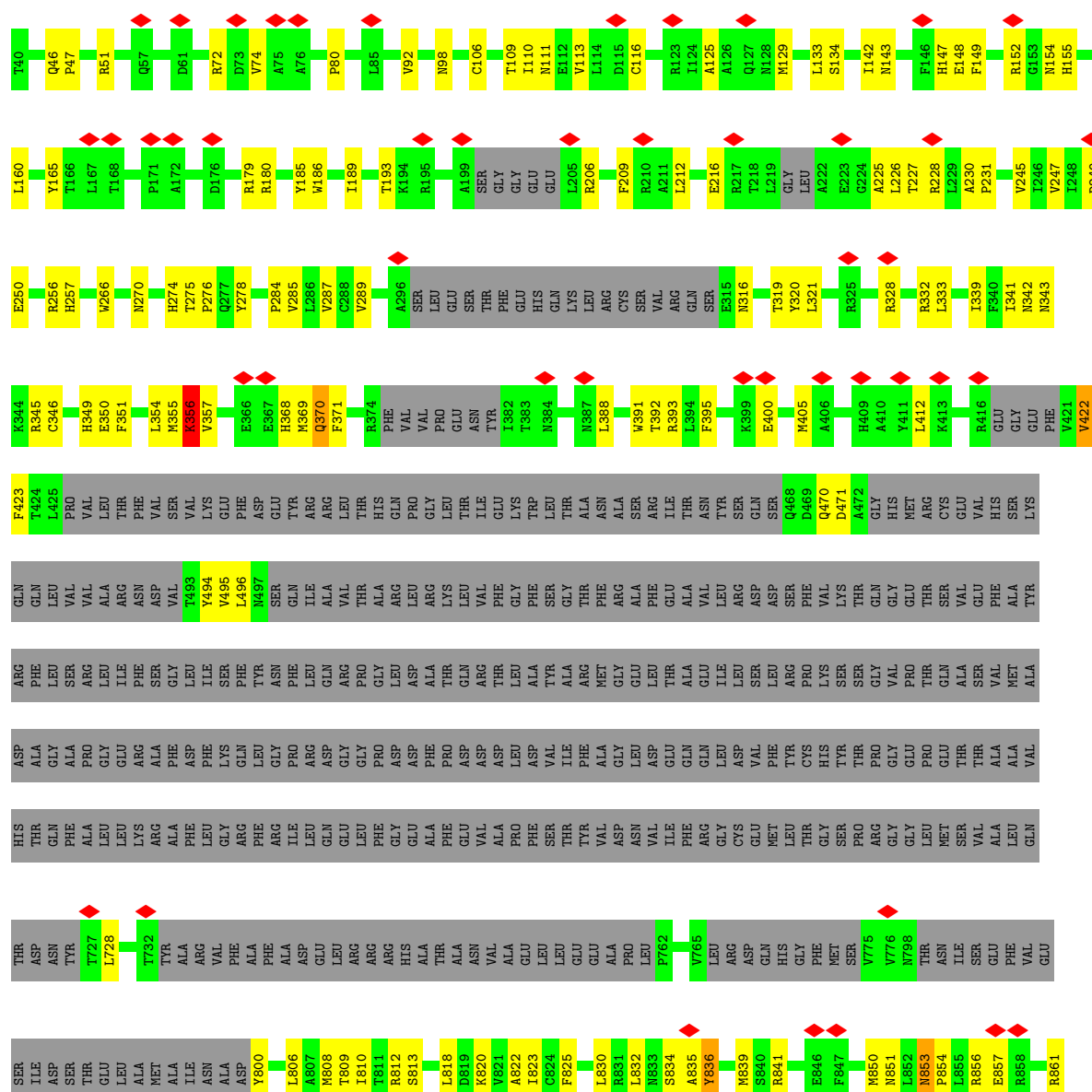
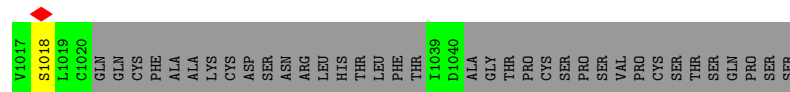
- Molecule 2 is a protein called DNA replication helicase.

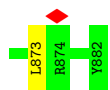
Mol	Chain	Residues	Atoms					AltConf	Trace
			Total	C	N	O	S		
2	B	456	3614	2307	638	652	17	0	0

- Molecule 3 is Amenamevir (CCD ID: A1BXD) (formula: $C_{24}H_{26}N_4O_5S$) (labeled as "Ligand of Interest" by depositor).



Mol	Chain	Residues	Atoms					AltConf
			Total	C	N	O	S	
3	A	1	34	24	4	5	1	0





4 Experimental information

Property	Value	Source
EM reconstruction method	SINGLE PARTICLE	Depositor
Imposed symmetry	POINT, Not provided	
Number of particles used	115543	Depositor
Resolution determination method	FSC 0.143 CUT-OFF	Depositor
CTF correction method	PHASE FLIPPING AND AMPLITUDE CORRECTION	Depositor
Microscope	TFS KRIOS	Depositor
Voltage (kV)	300	Depositor
Electron dose ($e^-/\text{\AA}^2$)	50	Depositor
Minimum defocus (nm)	600	Depositor
Maximum defocus (nm)	2200	Depositor
Magnification	Not provided	
Image detector	TFS FALCON 4i (4k x 4k)	Depositor
Maximum map value	2.537	Depositor
Minimum map value	-0.002	Depositor
Average map value	0.001	Depositor
Map value standard deviation	0.020	Depositor
Recommended contour level	0.154	Depositor
Map size (Å)	306.18, 306.18, 306.18	wwPDB
Map dimensions	420, 420, 420	wwPDB
Map angles (°)	90.0, 90.0, 90.0	wwPDB
Pixel spacing (Å)	0.729, 0.729, 0.729	Depositor

5 Model quality [i](#)

5.1 Standard geometry [i](#)

Bond lengths and bond angles in the following residue types are not validated in this section: A1BXD

The Z score for a bond length (or angle) is the number of standard deviations the observed value is removed from the expected value. A bond length (or angle) with $|Z| > 5$ is considered an outlier worth inspection. RMSZ is the root-mean-square of all Z scores of the bond lengths (or angles).

Mol	Chain	Bond lengths		Bond angles	
		RMSZ	$\# Z > 5$	RMSZ	$\# Z > 5$
1	A	0.73	8/3108 (0.3%)	0.65	15/4214 (0.4%)
2	B	0.65	4/3684 (0.1%)	0.78	11/4997 (0.2%)
All	All	0.69	12/6792 (0.2%)	0.73	26/9211 (0.3%)

Chiral center outliers are detected by calculating the chiral volume of a chiral center and verifying if the center is modelled as a planar moiety or with the opposite hand. A planarity outlier is detected by checking planarity of atoms in a peptide group, atoms in a mainchain group or atoms of a sidechain that are expected to be planar.

Mol	Chain	#Chirality outliers	#Planarity outliers
1	A	0	2
2	B	0	1
All	All	0	3

All (12) bond length outliers are listed below:

Mol	Chain	Res	Type	Atoms	Z	Observed(Å)	Ideal(Å)
1	A	899	ALA	C-N	30.87	1.73	1.33
2	B	356	LYS	C-N	-29.17	0.97	1.34
2	B	355	MET	C-N	-15.65	1.13	1.33
2	B	836	TYR	C-N	-13.15	1.15	1.33
2	B	835	ALA	C-N	-12.40	1.16	1.33
1	A	895	PHE	CG-CD2	-5.79	1.26	1.38
1	A	896	GLU	CB-CG	-5.77	1.35	1.52
1	A	895	PHE	CE1-CZ	-5.62	1.21	1.38
1	A	895	PHE	CD2-CE2	-5.50	1.22	1.38
1	A	895	PHE	CD1-CE1	-5.23	1.23	1.38
1	A	895	PHE	CG-CD1	-5.23	1.27	1.38
1	A	898	LYS	CA-C	-5.05	1.47	1.53

All (26) bond angle outliers are listed below:

Mol	Chain	Res	Type	Atoms	Z	Observed(°)	Ideal(°)
2	B	835	ALA	O-C-N	25.85	149.52	122.12
2	B	836	TYR	O-C-N	-16.16	101.09	122.59
2	B	835	ALA	CA-C-N	-14.72	93.42	121.54
2	B	835	ALA	C-N-CA	-14.72	93.42	121.54
1	A	898	LYS	O-C-N	-9.19	111.34	122.19
2	B	836	TYR	CA-C-N	8.92	138.02	121.97
2	B	836	TYR	C-N-CA	8.92	138.02	121.97
2	B	356	LYS	CA-C-N	-7.79	109.55	120.53
2	B	356	LYS	C-N-CA	-7.79	109.55	120.53
1	A	943	ALA	CA-C-N	-7.70	110.14	122.53
1	A	943	ALA	C-N-CA	-7.70	110.14	122.53
2	B	274	HIS	CA-C-N	7.39	131.91	120.68
2	B	274	HIS	C-N-CA	7.39	131.91	120.68
1	A	942	VAL	CA-C-N	7.33	135.54	121.54
1	A	942	VAL	C-N-CA	7.33	135.54	121.54
1	A	905	GLU	CA-C-N	-7.20	110.12	122.14
1	A	905	GLU	C-N-CA	-7.20	110.12	122.14
1	A	895	PHE	N-CA-C	-6.28	105.44	113.23
1	A	1004	PHE	CA-C-N	-6.11	115.19	122.22
1	A	1004	PHE	C-N-CA	-6.11	115.19	122.22
1	A	944	CYS	CA-C-N	5.75	132.04	121.70
1	A	944	CYS	C-N-CA	5.75	132.04	121.70
1	A	943	ALA	N-CA-CB	5.62	119.98	110.49
1	A	295	ALA	N-CA-C	-5.19	107.97	114.56
2	B	356	LYS	O-C-N	5.08	127.58	122.09
1	A	1004	PHE	N-CA-C	5.03	125.08	111.00

There are no chirality outliers.

All (3) planarity outliers are listed below:

Mol	Chain	Res	Type	Group
1	A	942	VAL	Peptide
1	A	943	ALA	Peptide
2	B	836	TYR	Mainchain

5.2 Too-close contacts ⓘ

In the following table, the Non-H and H(model) columns list the number of non-hydrogen atoms and hydrogen atoms in the chain respectively. The H(added) column lists the number of hydrogen atoms added and optimized by MolProbity. The Clashes column lists the number of clashes within the asymmetric unit, whereas Symm-Clashes lists symmetry-related clashes.

Mol	Chain	Non-H	H(model)	H(added)	Clashes	Symm-Clashes
1	A	3047	0	2961	87	0
2	B	3614	0	3625	97	0
3	A	34	0	0	6	0
All	All	6695	0	6586	166	0

The all-atom clashscore is defined as the number of clashes found per 1000 atoms (including hydrogen atoms). The all-atom clashscore for this structure is 12.

All (166) close contacts within the same asymmetric unit are listed below, sorted by their clash magnitude.

Atom-1	Atom-2	Interatomic distance (Å)	Clash overlap (Å)
1:A:899:ALA:C	1:A:900:SER:N	1.73	1.44
1:A:907:PHE:CZ	2:B:349:HIS:HD2	1.56	1.21
1:A:907:PHE:CZ	2:B:349:HIS:CD2	2.37	1.10
1:A:906:HIS:O	1:A:906:HIS:ND1	1.95	0.98
1:A:907:PHE:CE1	2:B:349:HIS:HD2	1.95	0.84
1:A:907:PHE:CE1	2:B:349:HIS:CD2	2.67	0.82
2:B:422:VAL:HG13	2:B:423:PHE:H	1.44	0.81
1:A:360:PHE:HD1	3:A:1901:A1BXD:C05	1.96	0.79
1:A:401:PHE:CZ	1:A:894:PHE:CZ	2.70	0.79
1:A:906:HIS:C	1:A:906:HIS:HD1	1.90	0.79
1:A:357:LEU:HD11	1:A:902:ASN:ND2	2.01	0.76
1:A:357:LEU:CD1	1:A:902:ASN:ND2	2.50	0.74
2:B:391:TRP:HA	2:B:820:LYS:HB2	1.71	0.72
2:B:830:LEU:HD21	2:B:854:PRO:HA	1.72	0.70
1:A:360:PHE:CD1	3:A:1901:A1BXD:C05	2.74	0.70
1:A:279:HIS:ND1	1:A:306:TYR:OH	2.25	0.70
1:A:906:HIS:ND1	1:A:906:HIS:C	2.50	0.70
2:B:412:LEU:HB3	2:B:422:VAL:HG11	1.77	0.67
1:A:109:ARG:NH1	1:A:254:GLN:OE1	2.27	0.67
2:B:328:ARG:HA	2:B:333:LEU:HD13	1.74	0.67
1:A:907:PHE:CD1	2:B:349:HIS:CB	2.79	0.66
2:B:350:GLU:HB3	2:B:371:PHE:CE2	2.31	0.66
1:A:234:LYS:NZ	2:B:134:SER:O	2.28	0.64
1:A:899:ALA:C	1:A:900:SER:CA	2.70	0.63
1:A:357:LEU:HD11	1:A:902:ASN:HD21	1.61	0.62
2:B:856:ARG:HG2	2:B:857:GLU:H	1.65	0.61
2:B:369:MET:O	2:B:370:GLN:HB2	2.00	0.61
2:B:351:PHE:HE1	2:B:839:MET:HE2	1.65	0.61
1:A:333:LEU:HD13	1:A:362:CYS:HB3	1.82	0.60
1:A:907:PHE:CD1	2:B:349:HIS:HB2	2.38	0.58
2:B:245:VAL:HG22	2:B:285:VAL:HB	1.86	0.58

Continued on next page...

Continued from previous page...

Atom-1	Atom-2	Interatomic distance (Å)	Clash overlap (Å)
1:A:401:PHE:HZ	1:A:894:PHE:CE2	2.23	0.57
2:B:160:LEU:HD22	2:B:185:TYR:HA	1.86	0.57
2:B:810:ILE:HD12	2:B:834:SER:HB3	1.86	0.57
1:A:907:PHE:CE2	2:B:349:HIS:CD2	2.90	0.57
1:A:280:ALA:H	1:A:305:GLN:HE22	1.51	0.56
2:B:422:VAL:HG23	2:B:495:VAL:HA	1.87	0.56
2:B:832:LEU:HD12	2:B:861:ARG:HG2	1.88	0.56
2:B:185:TYR:HB2	2:B:257:HIS:CD2	2.41	0.55
1:A:899:ALA:O	1:A:902:ASN:HB2	2.06	0.55
2:B:46:GLN:HG3	2:B:47:PRO:HD3	1.89	0.55
2:B:143:ASN:HB3	2:B:147:HIS:HB3	1.87	0.55
2:B:249:ASP:OD1	2:B:250:GLU:N	2.40	0.55
1:A:375:VAL:HA	1:A:387:GLU:HG3	1.89	0.55
1:A:351:PHE:O	1:A:355:ILE:HG12	2.08	0.54
1:A:907:PHE:CD1	2:B:349:HIS:HB3	2.43	0.54
1:A:356:TYR:CE1	2:B:341:ILE:HD12	2.42	0.54
2:B:405:MET:HG3	2:B:470:GLN:HB3	1.90	0.54
1:A:356:TYR:O	3:A:1901:A1BXD:C32	2.56	0.53
1:A:140:ASP:OD1	1:A:141:HIS:N	2.41	0.53
1:A:393:GLY:O	1:A:397:VAL:HG23	2.07	0.53
1:A:357:LEU:CD1	1:A:902:ASN:HD22	2.22	0.53
2:B:422:VAL:HG13	2:B:423:PHE:N	2.19	0.52
1:A:360:PHE:HD1	3:A:1901:A1BXD:C06	2.23	0.52
2:B:342:ASN:OD1	2:B:343:ASN:N	2.42	0.52
1:A:349:ARG:HH12	2:B:368:HIS:CE1	2.27	0.52
1:A:214:LEU:O	1:A:218:ARG:HG2	2.09	0.52
2:B:129:MET:HE3	2:B:142:ILE:HG21	1.92	0.51
1:A:341:ARG:NE	2:B:873:LEU:O	2.28	0.51
1:A:401:PHE:CZ	1:A:894:PHE:CE2	2.97	0.51
1:A:401:PHE:HZ	1:A:894:PHE:CZ	2.28	0.51
2:B:185:TYR:HB2	2:B:257:HIS:HD2	1.76	0.51
1:A:906:HIS:O	1:A:906:HIS:CG	2.63	0.50
2:B:92:VAL:HG11	2:B:321:LEU:HD13	1.93	0.50
2:B:125:ALA:O	2:B:129:MET:HG2	2.12	0.50
2:B:494:TYR:OH	2:B:800:TYR:O	2.29	0.50
1:A:1007:LEU:HA	1:A:1018:SER:H	1.76	0.50
2:B:808:MET:HE2	2:B:813:SER:HA	1.93	0.50
2:B:111:ASN:HB3	2:B:133:LEU:HD11	1.94	0.50
1:A:239:GLU:O	1:A:243:VAL:HG22	2.11	0.50
1:A:240:LYS:HG3	1:A:244:LEU:HD12	1.93	0.50
1:A:907:PHE:CG	1:A:908:GLY:N	2.80	0.50

Continued on next page...

Continued from previous page...

Atom-1	Atom-2	Interatomic distance (Å)	Clash overlap (Å)
1:A:901:ARG:NH2	1:A:902:ASN:OD1	2.45	0.49
2:B:853:ASN:HD22	2:B:853:ASN:C	2.19	0.49
1:A:901:ARG:HH21	1:A:902:ASN:HA	1.75	0.49
1:A:325:ALA:O	1:A:329:GLU:HG2	2.12	0.49
1:A:341:ARG:HB2	1:A:354:TYR:HE2	1.76	0.49
2:B:388:LEU:HD22	2:B:393:ARG:HH21	1.78	0.49
1:A:293:SER:O	1:A:295:ALA:N	2.45	0.48
2:B:256:ARG:HG3	2:B:320:TYR:HB2	1.94	0.48
1:A:907:PHE:CE1	2:B:349:HIS:HB3	2.48	0.48
2:B:225:ALA:O	2:B:228:ARG:NH1	2.36	0.48
2:B:106:CYS:O	2:B:110:ILE:HG12	2.13	0.48
2:B:152:ARG:HH12	2:B:154:ASN:HD21	1.60	0.48
2:B:392:THR:HA	2:B:806:LEU:O	2.14	0.48
1:A:238:ASP:OD1	1:A:239:GLU:N	2.46	0.48
2:B:109:THR:O	2:B:113:VAL:HG12	2.13	0.48
2:B:853:ASN:O	2:B:853:ASN:ND2	2.43	0.48
2:B:316:ASN:ND2	2:B:319:THR:OG1	2.46	0.48
2:B:51:ARG:HH22	2:B:332:ARG:HH12	1.62	0.47
2:B:250:GLU:N	2:B:289:VAL:O	2.46	0.47
1:A:39:THR:HG21	1:A:206:TYR:HE1	1.78	0.47
2:B:256:ARG:HE	2:B:320:TYR:HD1	1.60	0.47
1:A:25:ALA:O	1:A:49:TYR:N	2.43	0.47
2:B:266:TRP:CE3	2:B:284:PRO:HG3	2.50	0.47
2:B:345:ARG:HH11	2:B:345:ARG:HB2	1.80	0.47
2:B:405:MET:HB2	2:B:471:ASP:HB3	1.97	0.47
2:B:270:ASN:HB3	2:B:278:TYR:HB2	1.97	0.46
1:A:360:PHE:CD1	3:A:1901:A1BXD:C06	2.98	0.46
2:B:148:GLU:O	2:B:149:PHE:HB3	2.15	0.46
2:B:823:ILE:HG21	2:B:825:PHE:CZ	2.50	0.46
2:B:230:ALA:N	2:B:231:PRO:HD2	2.31	0.46
1:A:31:ILE:HG13	1:A:218:ARG:HD3	1.97	0.46
1:A:264:ASP:HB2	2:B:109:THR:HG22	1.97	0.46
1:A:943:ALA:HB2	1:A:1005:VAL:HB	1.97	0.46
1:A:349:ARG:HH12	2:B:368:HIS:HE1	1.64	0.45
1:A:899:ALA:CA	1:A:900:SER:N	2.69	0.45
1:A:360:PHE:HD1	3:A:1901:A1BXD:C04	2.29	0.45
2:B:808:MET:HE3	2:B:812:ARG:HG3	1.99	0.45
1:A:39:THR:HG23	1:A:204:THR:HA	1.98	0.45
1:A:279:HIS:HD1	1:A:306:TYR:HH	1.49	0.45
2:B:80:PRO:HG3	2:B:186:TRP:CG	2.51	0.45
2:B:212:LEU:HD22	2:B:226:LEU:HB3	1.98	0.45

Continued on next page...

Continued from previous page...

Atom-1	Atom-2	Interatomic distance (Å)	Clash overlap (Å)
1:A:331:SER:O	1:A:335:LYS:HG3	2.16	0.45
1:A:915:GLU:O	1:A:919:ARG:HG2	2.17	0.44
2:B:189:ILE:O	2:B:193:THR:HG23	2.17	0.44
1:A:129:ASP:OD1	1:A:133:HIS:ND1	2.49	0.44
2:B:345:ARG:HB2	2:B:345:ARG:NH1	2.32	0.44
2:B:110:ILE:HG22	2:B:116:CYS:SG	2.56	0.44
2:B:339:ILE:HG21	2:B:873:LEU:HD21	1.98	0.44
2:B:212:LEU:O	2:B:216:GLU:HG3	2.17	0.44
1:A:51:PHE:CE2	1:A:246:THR:HG21	2.53	0.44
2:B:154:ASN:OD1	2:B:155:HIS:N	2.51	0.44
2:B:808:MET:CE	2:B:812:ARG:HG3	2.47	0.43
1:A:907:PHE:CE1	2:B:349:HIS:CB	3.01	0.43
2:B:72:ARG:C	2:B:74:VAL:H	2.26	0.43
1:A:90:ARG:CZ	1:A:117:ARG:HH21	2.31	0.43
1:A:315:PHE:HB3	1:A:316:PRO:HD3	2.00	0.43
2:B:422:VAL:HA	2:B:496:LEU:H	1.83	0.42
1:A:349:ARG:HH22	2:B:368:HIS:HE1	1.68	0.42
1:A:359:HIS:ND1	2:B:341:ILE:HD11	2.33	0.42
1:A:901:ARG:HE	1:A:901:ARG:C	2.27	0.42
2:B:354:LEU:HD22	2:B:371:PHE:CE1	2.54	0.42
1:A:244:LEU:HB3	1:A:315:PHE:CE2	2.55	0.42
2:B:392:THR:HB	2:B:820:LYS:NZ	2.35	0.42
1:A:401:PHE:CZ	1:A:894:PHE:HZ	2.30	0.42
2:B:392:THR:HG21	2:B:818:LEU:HD22	2.01	0.42
2:B:343:ASN:ND2	2:B:346:CYS:SG	2.93	0.42
1:A:41:SER:O	1:A:45:ALA:HB2	2.20	0.41
2:B:165:TYR:OH	2:B:179:ARG:NE	2.51	0.41
2:B:841:ARG:NE	2:B:841:ARG:HA	2.36	0.41
1:A:247:ARG:HH22	1:A:307:ALA:HB1	1.86	0.41
2:B:275:THR:HG23	2:B:278:TYR:H	1.85	0.41
2:B:216:GLU:OE2	2:B:227:THR:HG23	2.21	0.41
1:A:113:MET:HG3	1:A:114:PHE:HD1	1.85	0.41
1:A:365:PRO:HB2	1:A:366:PRO:HD3	2.03	0.41
1:A:900:SER:O	1:A:901:ARG:C	2.62	0.41
2:B:809:THR:HG23	2:B:812:ARG:H	1.85	0.41
1:A:24:TYR:OH	1:A:113:MET:HG2	2.21	0.41
2:B:206:ARG:O	2:B:206:ARG:HG2	2.20	0.41
1:A:37:LEU:HA	1:A:41:SER:C	2.45	0.41
2:B:247:VAL:HA	2:B:287:VAL:HB	2.03	0.41
1:A:898:LYS:HG3	1:A:902:ASN:ND2	2.36	0.41
1:A:944:CYS:SG	1:A:945:ILE:N	2.77	0.41

Continued on next page...

Continued from previous page...

Atom-1	Atom-2	Interatomic distance (Å)	Clash overlap (Å)
1:A:146:LEU:HD11	1:A:151:THR:HG21	2.02	0.40
2:B:165:TYR:CD1	2:B:180:ARG:HB3	2.56	0.40
2:B:350:GLU:HB3	2:B:371:PHE:CD2	2.56	0.40
2:B:392:THR:O	2:B:822:ALA:N	2.54	0.40
2:B:850:MET:HG2	2:B:851:ASN:H	1.86	0.40
1:A:325:ALA:O	1:A:328:ARG:HG2	2.21	0.40
2:B:209:PHE:CE2	2:B:276:PRO:HD3	2.56	0.40
2:B:395:PHE:CD2	2:B:400:GLU:HB3	2.56	0.40
2:B:356:LYS:O	2:B:357:VAL:C	2.53	0.40
1:A:49:TYR:CE1	1:A:136:PRO:HB3	2.56	0.40
1:A:95:LEU:HD13	1:A:224:SER:HB2	2.03	0.40
2:B:494:TYR:HB3	2:B:728:LEU:HD21	2.02	0.40

There are no symmetry-related clashes.

5.3 Torsion angles ⓘ

5.3.1 Protein backbone ⓘ

In the following table, the Percentiles column shows the percent Ramachandran outliers of the chain as a percentile score with respect to all PDB entries followed by that with respect to all EM entries.

The Analysed column shows the number of residues for which the backbone conformation was analysed, and the total number of residues.

Mol	Chain	Analysed	Favoured	Allowed	Outliers	Percentiles	
1	A	363/1058 (34%)	343 (94%)	19 (5%)	1 (0%)	36	68
2	B	432/843 (51%)	408 (94%)	22 (5%)	2 (0%)	24	59
All	All	795/1901 (42%)	751 (94%)	41 (5%)	3 (0%)	31	62

All (3) Ramachandran outliers are listed below:

Mol	Chain	Res	Type
2	B	422	VAL
2	B	370	GLN
1	A	294	PHE

5.3.2 Protein sidechains [i](#)

In the following table, the Percentiles column shows the percent sidechain outliers of the chain as a percentile score with respect to all PDB entries followed by that with respect to all EM entries.

The Analysed column shows the number of residues for which the sidechain conformation was analysed, and the total number of residues.

Mol	Chain	Analysed	Rotameric	Outliers	Percentiles	
1	A	320/833 (38%)	313 (98%)	7 (2%)	45	71
2	B	389/715 (54%)	386 (99%)	3 (1%)	73	82
All	All	709/1548 (46%)	699 (99%)	10 (1%)	57	77

All (10) residues with a non-rotameric sidechain are listed below:

Mol	Chain	Res	Type
1	A	893	SER
1	A	901	ARG
1	A	904	LEU
1	A	905	GLU
1	A	906	HIS
1	A	907	PHE
1	A	912	THR
2	B	98	ASN
2	B	356	LYS
2	B	853	ASN

Sometimes sidechains can be flipped to improve hydrogen bonding and reduce clashes. All (8) such sidechains are listed below:

Mol	Chain	Res	Type
1	A	68	GLN
1	A	208	HIS
1	A	209	HIS
2	B	343	ASN
2	B	349	HIS
2	B	409	HIS
2	B	470	GLN
2	B	853	ASN

5.3.3 RNA [i](#)

There are no RNA molecules in this entry.

5.4 Non-standard residues in protein, DNA, RNA chains [i](#)

There are no non-standard protein/DNA/RNA residues in this entry.

5.5 Carbohydrates [i](#)

There are no oligosaccharides in this entry.

5.6 Ligand geometry [i](#)

1 ligand is modelled in this entry.

In the following table, the Counts columns list the number of bonds (or angles) for which Mogul statistics could be retrieved, the number of bonds (or angles) that are observed in the model and the number of bonds (or angles) that are defined in the Chemical Component Dictionary. The Link column lists molecule types, if any, to which the group is linked. The Z score for a bond length (or angle) is the number of standard deviations the observed value is removed from the expected value. A bond length (or angle) with $|Z| > 2$ is considered an outlier worth inspection. RMSZ is the root-mean-square of all Z scores of the bond lengths (or angles).

Mol	Type	Chain	Res	Link	Bond lengths			Bond angles		
					Counts	RMSZ	$\# Z > 2$	Counts	RMSZ	$\# Z > 2$
3	A1BXD	A	1901	-	36,37,37	5.33	19 (52%)	44,53,53	2.80	17 (38%)

In the following table, the Chirals column lists the number of chiral outliers, the number of chiral centers analysed, the number of these observed in the model and the number defined in the Chemical Component Dictionary. Similar counts are reported in the Torsion and Rings columns. '-' means no outliers of that kind were identified.

Mol	Type	Chain	Res	Link	Chirals	Torsions	Rings
3	A1BXD	A	1901	-	-	6/24/36/36	0/4/4/4

All (19) bond length outliers are listed below:

Mol	Chain	Res	Type	Atoms	Z	Observed(Å)	Ideal(Å)
3	A	1901	A1BXD	C28-S29	-15.19	1.62	1.76
3	A	1901	A1BXD	O30-S29	12.38	1.67	1.44
3	A	1901	A1BXD	C32-S29	-11.20	1.66	1.76
3	A	1901	A1BXD	O31-S29	9.90	1.62	1.44
3	A	1901	A1BXD	C26-C24	-9.69	1.37	1.51
3	A	1901	A1BXD	C24-N08	9.58	1.47	1.36
3	A	1901	A1BXD	O22-N23	-8.06	1.30	1.41
3	A	1901	A1BXD	C10-N12	5.87	1.48	1.35

Continued on next page...

Continued from previous page...

Mol	Chain	Res	Type	Atoms	Z	Observed(Å)	Ideal(Å)
3	A	1901	A1BXD	C07-N08	5.29	1.51	1.44
3	A	1901	A1BXD	C27-C26	4.57	1.64	1.53
3	A	1901	A1BXD	C33-C26	4.22	1.63	1.53
3	A	1901	A1BXD	C16-C19	3.09	1.52	1.47
3	A	1901	A1BXD	C07-C02	-2.78	1.36	1.40
3	A	1901	A1BXD	C21-N20	2.72	1.32	1.29
3	A	1901	A1BXD	O25-C24	-2.66	1.17	1.22
3	A	1901	A1BXD	C17-C16	2.39	1.43	1.39
3	A	1901	A1BXD	C13-N12	2.19	1.46	1.41
3	A	1901	A1BXD	C14-C13	2.11	1.42	1.39
3	A	1901	A1BXD	O11-C10	-2.00	1.19	1.23

All (17) bond angle outliers are listed below:

Mol	Chain	Res	Type	Atoms	Z	Observed(°)	Ideal(°)
3	A	1901	A1BXD	O31-S29-O30	-8.86	110.51	117.89
3	A	1901	A1BXD	C16-C19-N23	7.33	128.48	122.22
3	A	1901	A1BXD	C32-S29-C28	6.74	111.55	101.11
3	A	1901	A1BXD	C15-C16-C19	-5.47	113.89	120.78
3	A	1901	A1BXD	C33-C26-C24	-4.62	102.18	109.96
3	A	1901	A1BXD	C27-C28-S29	-4.20	106.89	111.33
3	A	1901	A1BXD	C33-C32-S29	-4.07	107.02	111.33
3	A	1901	A1BXD	C02-C07-N08	2.94	123.06	119.10
3	A	1901	A1BXD	C17-C16-C19	2.78	124.28	120.78
3	A	1901	A1BXD	C09-N08-C07	2.78	122.10	115.52
3	A	1901	A1BXD	C17-C16-C15	2.57	121.84	118.57
3	A	1901	A1BXD	C05-C06-C07	2.42	121.39	117.99
3	A	1901	A1BXD	O11-C10-N12	-2.25	119.61	123.64
3	A	1901	A1BXD	C18-C17-C16	-2.11	118.54	120.80
3	A	1901	A1BXD	C06-C07-C02	-2.09	118.65	121.78
3	A	1901	A1BXD	O11-C10-C09	2.05	124.60	121.02
3	A	1901	A1BXD	C18-C13-C14	2.04	121.75	119.04

There are no chirality outliers.

All (6) torsion outliers are listed below:

Mol	Chain	Res	Type	Atoms
3	A	1901	A1BXD	C15-C16-C19-N20
3	A	1901	A1BXD	C15-C16-C19-N23
3	A	1901	A1BXD	C17-C16-C19-N20
3	A	1901	A1BXD	C17-C16-C19-N23
3	A	1901	A1BXD	C18-C13-N12-C10

Continued on next page...

Continued from previous page...

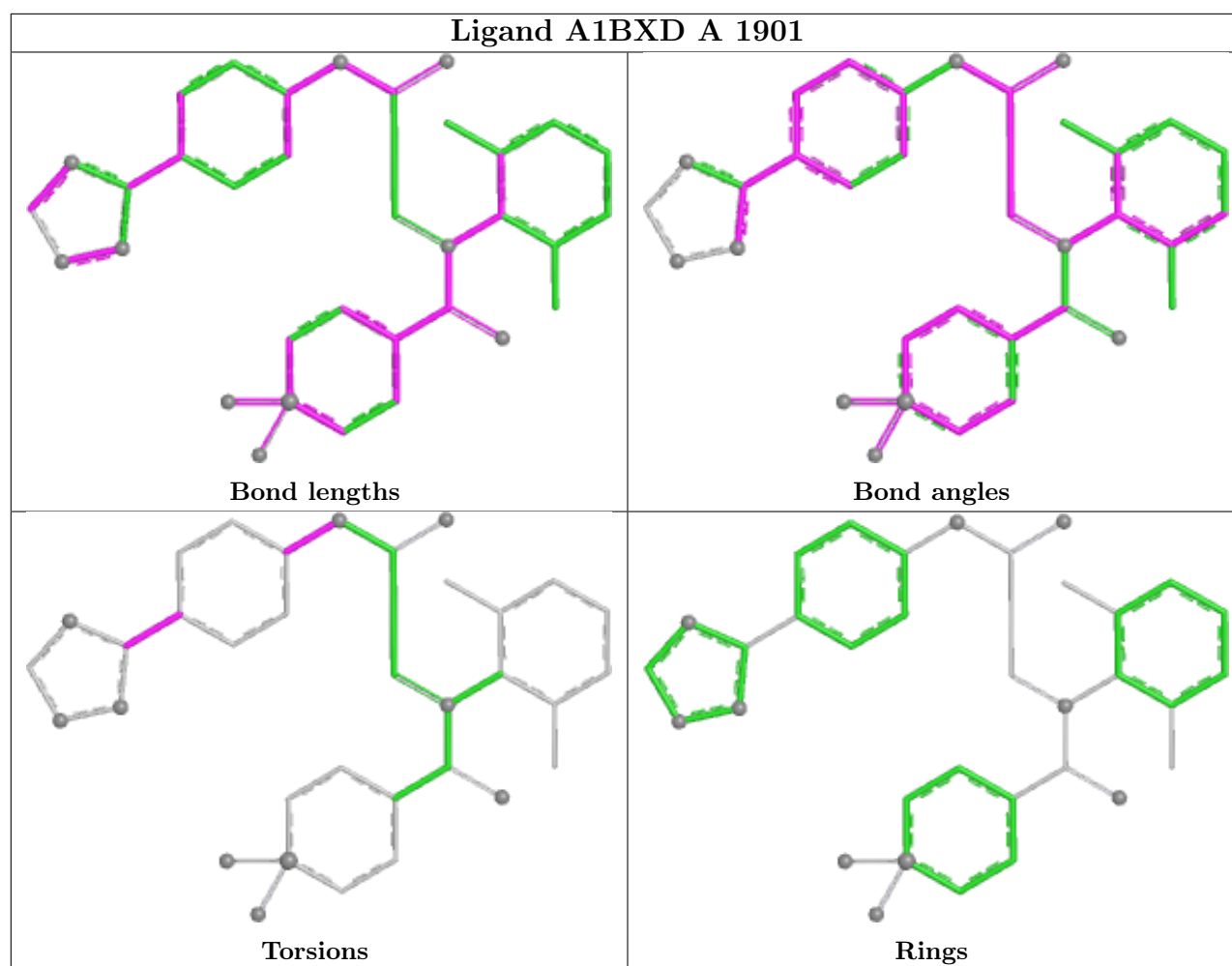
Mol	Chain	Res	Type	Atoms
3	A	1901	A1BXD	C14-C13-N12-C10

There are no ring outliers.

1 monomer is involved in 6 short contacts:

Mol	Chain	Res	Type	Clashes	Symm-Clashes
3	A	1901	A1BXD	6	0

The following is a two-dimensional graphical depiction of Mogul quality analysis of bond lengths, bond angles, torsion angles, and ring geometry for all instances of the Ligand of Interest. In addition, ligands with molecular weight > 250 and outliers as shown on the validation Tables will also be included. For torsion angles, if less than 5% of the Mogul distribution of torsion angles is within 10 degrees of the torsion angle in question, then that torsion angle is considered an outlier. Any bond that is central to one or more torsion angles identified as an outlier by Mogul will be highlighted in the graph. For rings, the root-mean-square deviation (RMSD) between the ring in question and similar rings identified by Mogul is calculated over all ring torsion angles. If the average RMSD is greater than 60 degrees and the minimal RMSD between the ring in question and any Mogul-identified rings is also greater than 60 degrees, then that ring is considered an outlier. The outliers are highlighted in purple. The color gray indicates Mogul did not find sufficient equivalents in the CSD to analyse the geometry.



5.7 Other polymers [i](#)

There are no such residues in this entry.

5.8 Polymer linkage issues [i](#)

The following chains have linkage breaks:

Mol	Chain	Number of breaks
2	B	4
1	A	1

All chain breaks are listed below:

Model	Chain	Residue-1	Atom-1	Residue-2	Atom-2	Distance (Å)
1	A	899:ALA	C	900:SER	N	1.73
1	B	835:ALA	C	836:TYR	N	1.16

Continued on next page...

Continued from previous page...

Model	Chain	Residue-1	Atom-1	Residue-2	Atom-2	Distance (Å)
1	B	836:TYR	C	837:VAL	N	1.15
1	B	355:MET	C	356:LYS	N	1.13
1	B	356:LYS	C	357:VAL	N	0.97

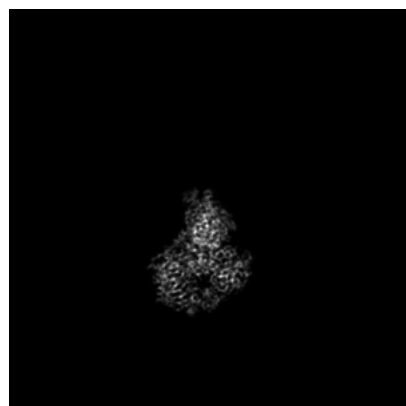
6 Map visualisation [i](#)

This section contains visualisations of the EMDB entry EMD-49326. These allow visual inspection of the internal detail of the map and identification of artifacts.

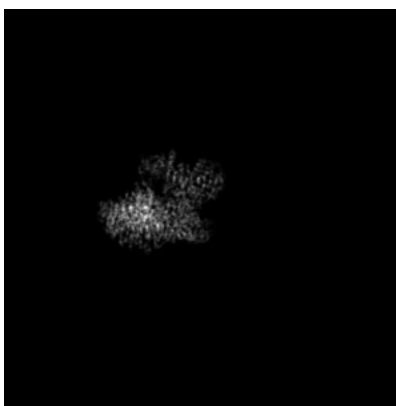
Images derived from a raw map, generated by summing the deposited half-maps, are presented below the corresponding image components of the primary map to allow further visual inspection and comparison with those of the primary map.

6.1 Orthogonal projections [i](#)

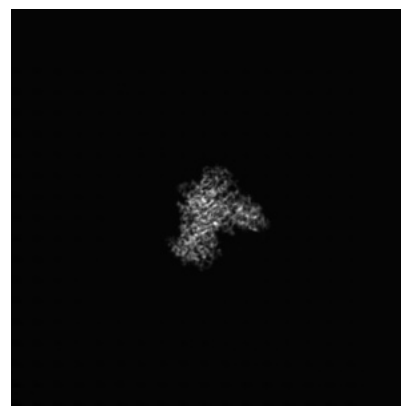
6.1.1 Primary map



X

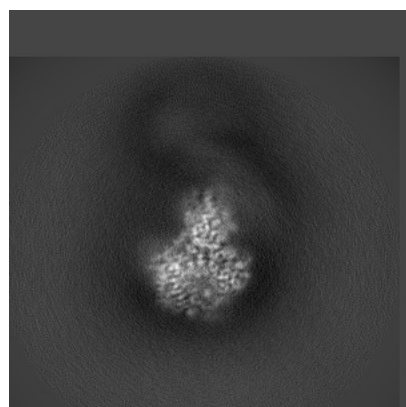


Y

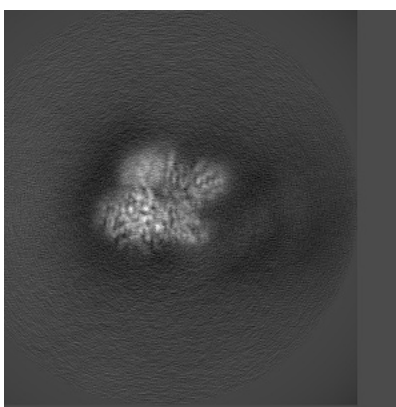


Z

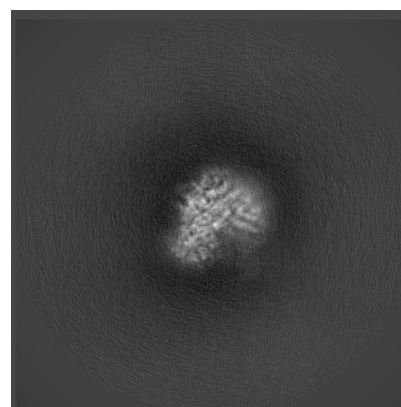
6.1.2 Raw map



X



Y



Z

The images above show the map projected in three orthogonal directions.

6.2 Central slices [i](#)

6.2.1 Primary map



X Index: 210

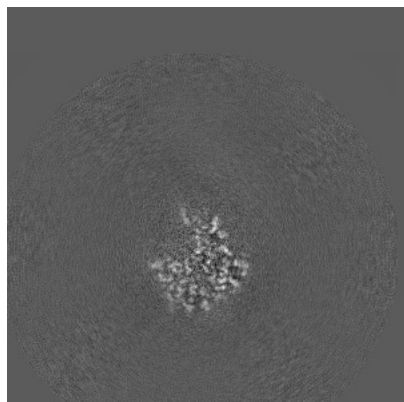


Y Index: 210

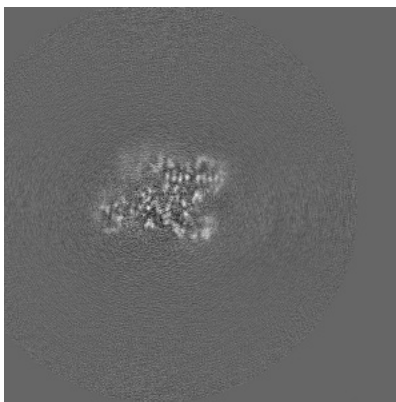


Z Index: 210

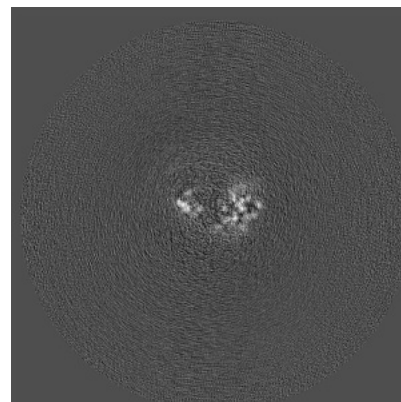
6.2.2 Raw map



X Index: 210



Y Index: 210

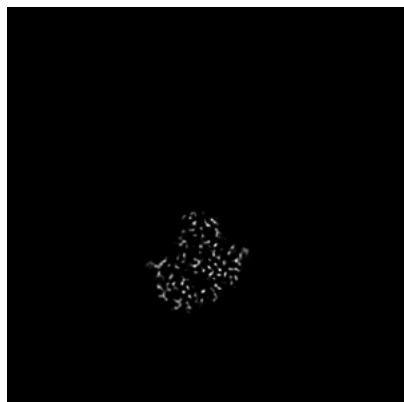


Z Index: 210

The images above show central slices of the map in three orthogonal directions.

6.3 Largest variance slices [i](#)

6.3.1 Primary map



X Index: 202

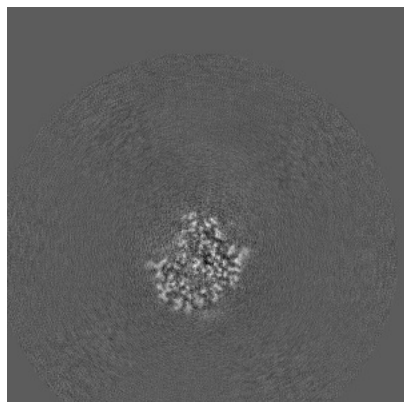


Y Index: 207

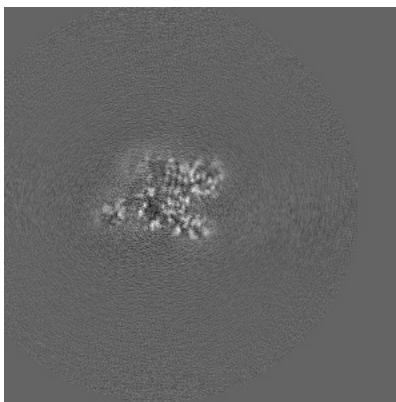


Z Index: 150

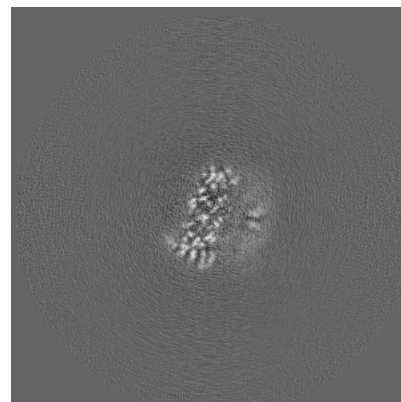
6.3.2 Raw map



X Index: 202



Y Index: 206

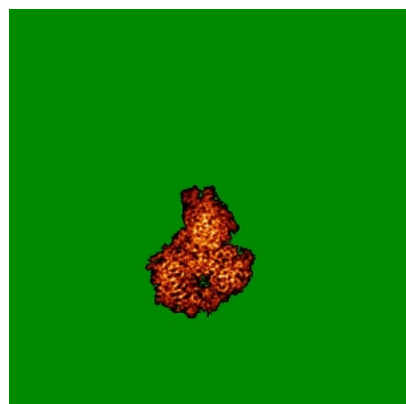


Z Index: 149

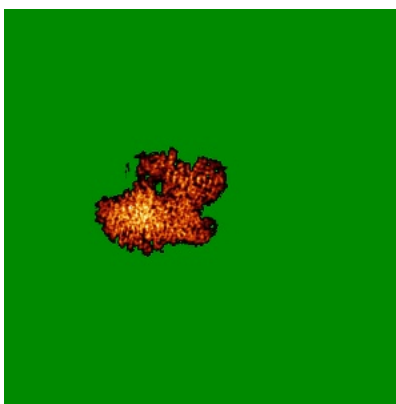
The images above show the largest variance slices of the map in three orthogonal directions.

6.4 Orthogonal standard-deviation projections (False-color) [i](#)

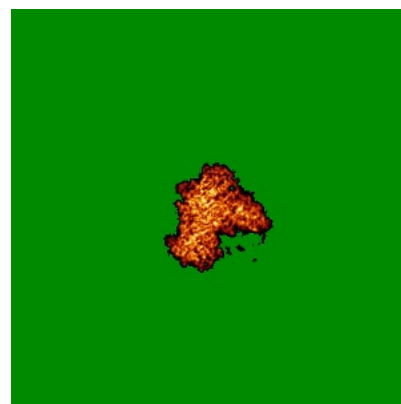
6.4.1 Primary map



X

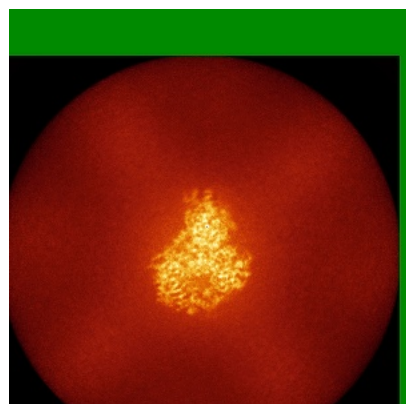


Y

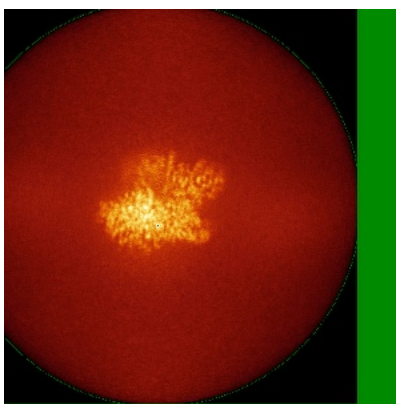


Z

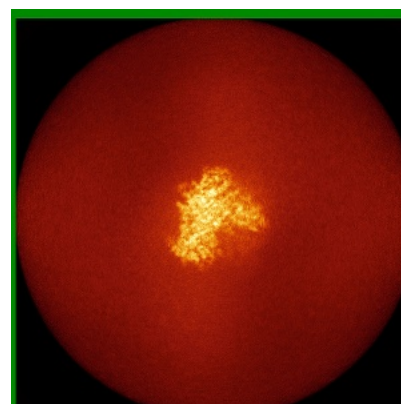
6.4.2 Raw map



X



Y



Z

The images above show the map standard deviation projections with false color in three orthogonal directions. Minimum values are shown in green, max in blue, and dark to light orange shades represent small to large values respectively.

6.5 Orthogonal surface views [i](#)

This section was not generated.

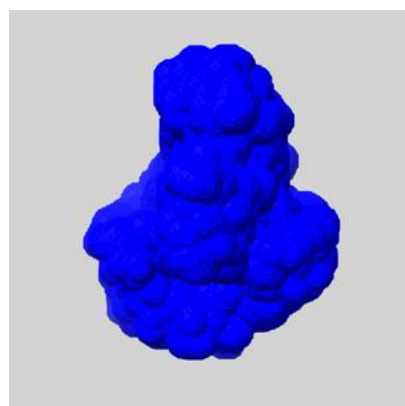
6.6 Mask visualisation [i](#)

This section shows the 3D surface view of the primary map at 50% transparency overlaid with the specified mask at 0% transparency

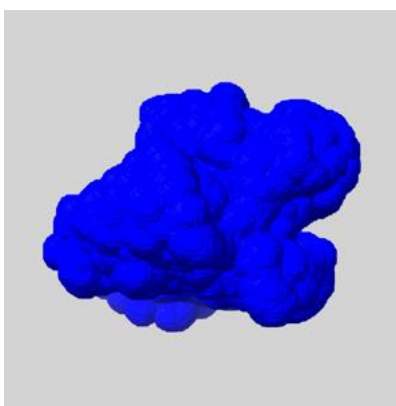
A mask typically either:

- Encompasses the whole structure
- Separates out a domain, a functional unit, a monomer or an area of interest from a larger structure

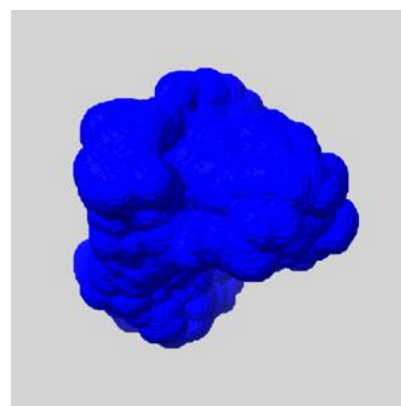
6.6.1 emd_49326_msk_1.map [i](#)



X



Y

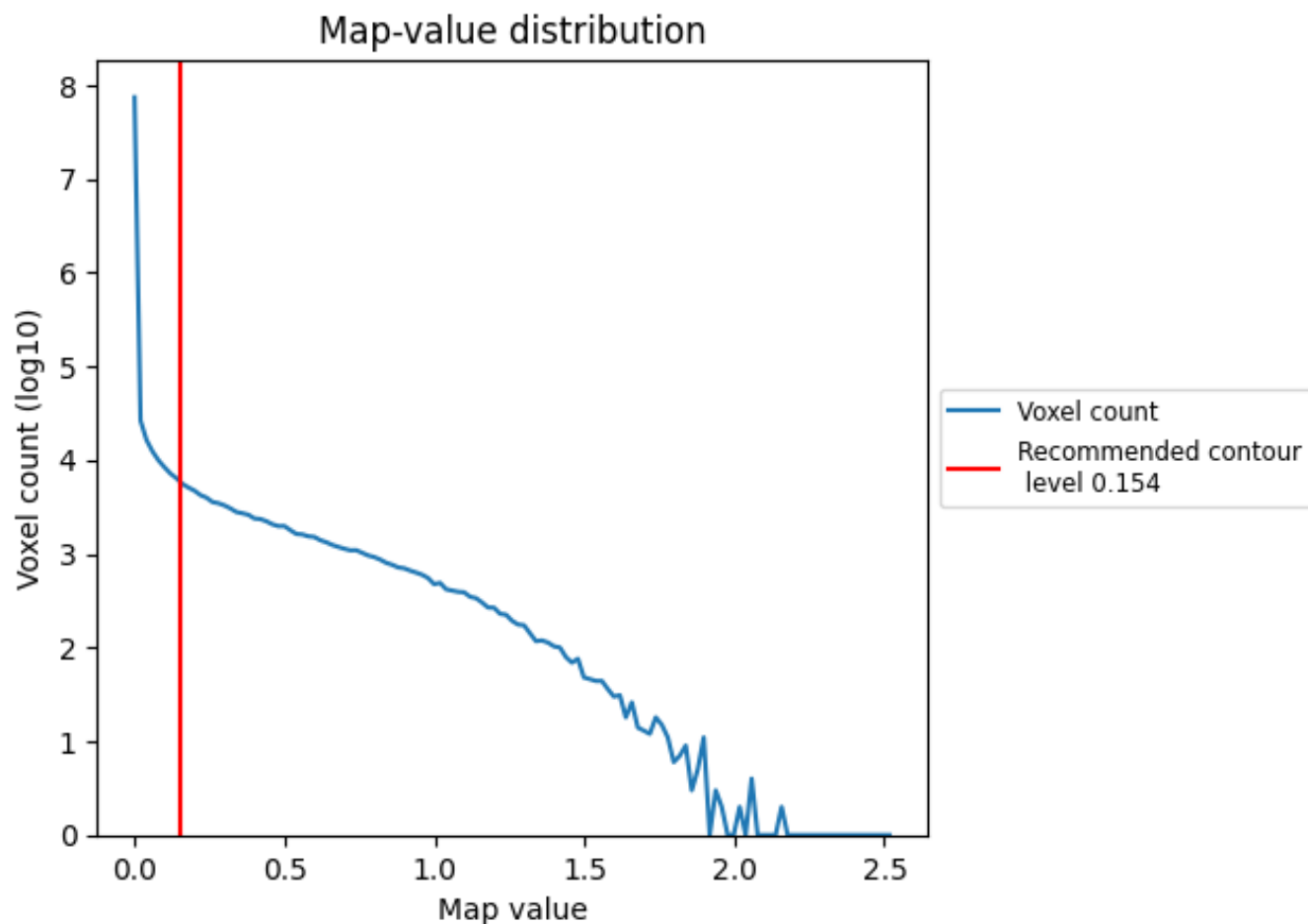


Z

7 Map analysis [i](#)

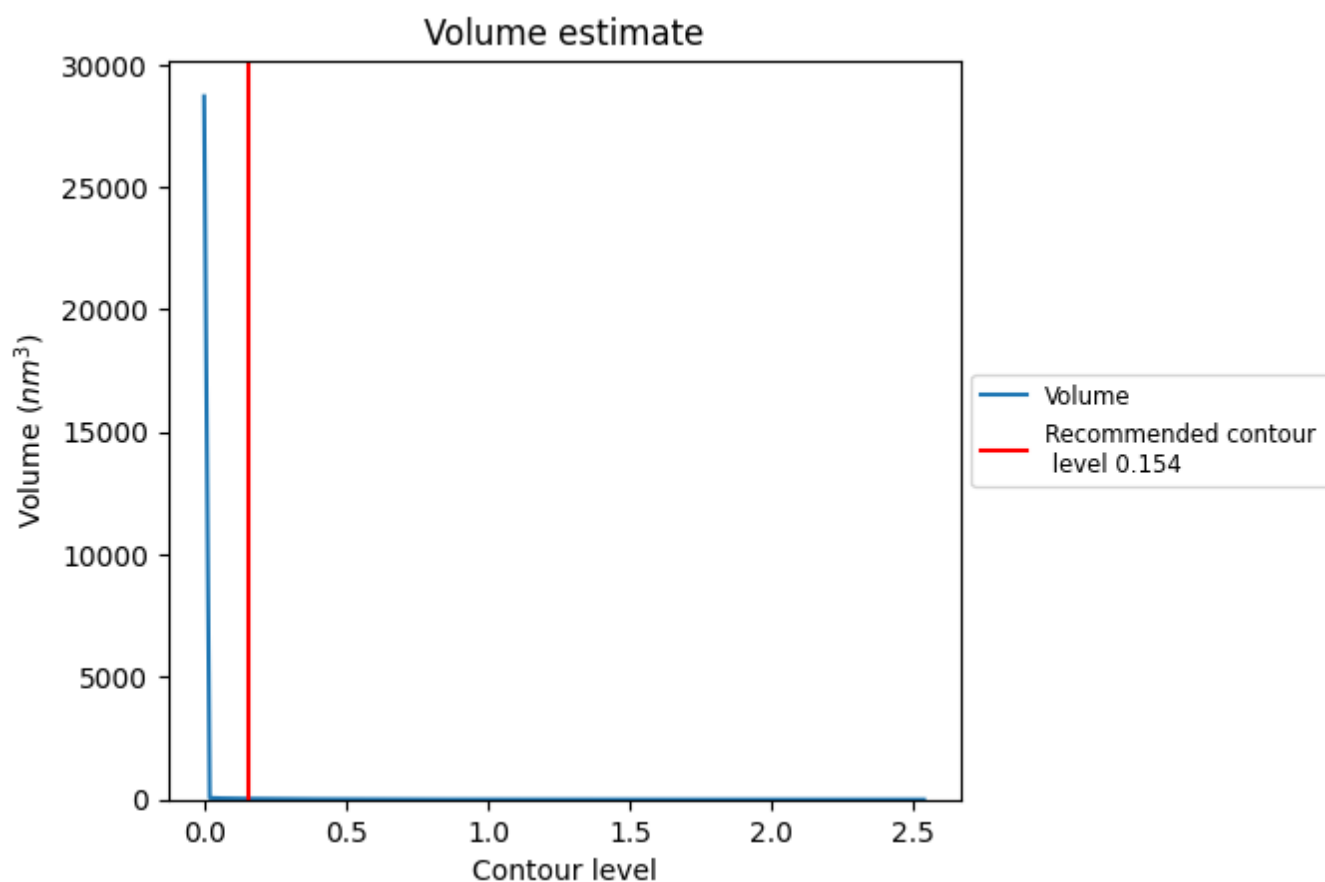
This section contains the results of statistical analysis of the map.

7.1 Map-value distribution [i](#)



The map-value distribution is plotted in 128 intervals along the x-axis. The y-axis is logarithmic. A spike in this graph at zero usually indicates that the volume has been masked.

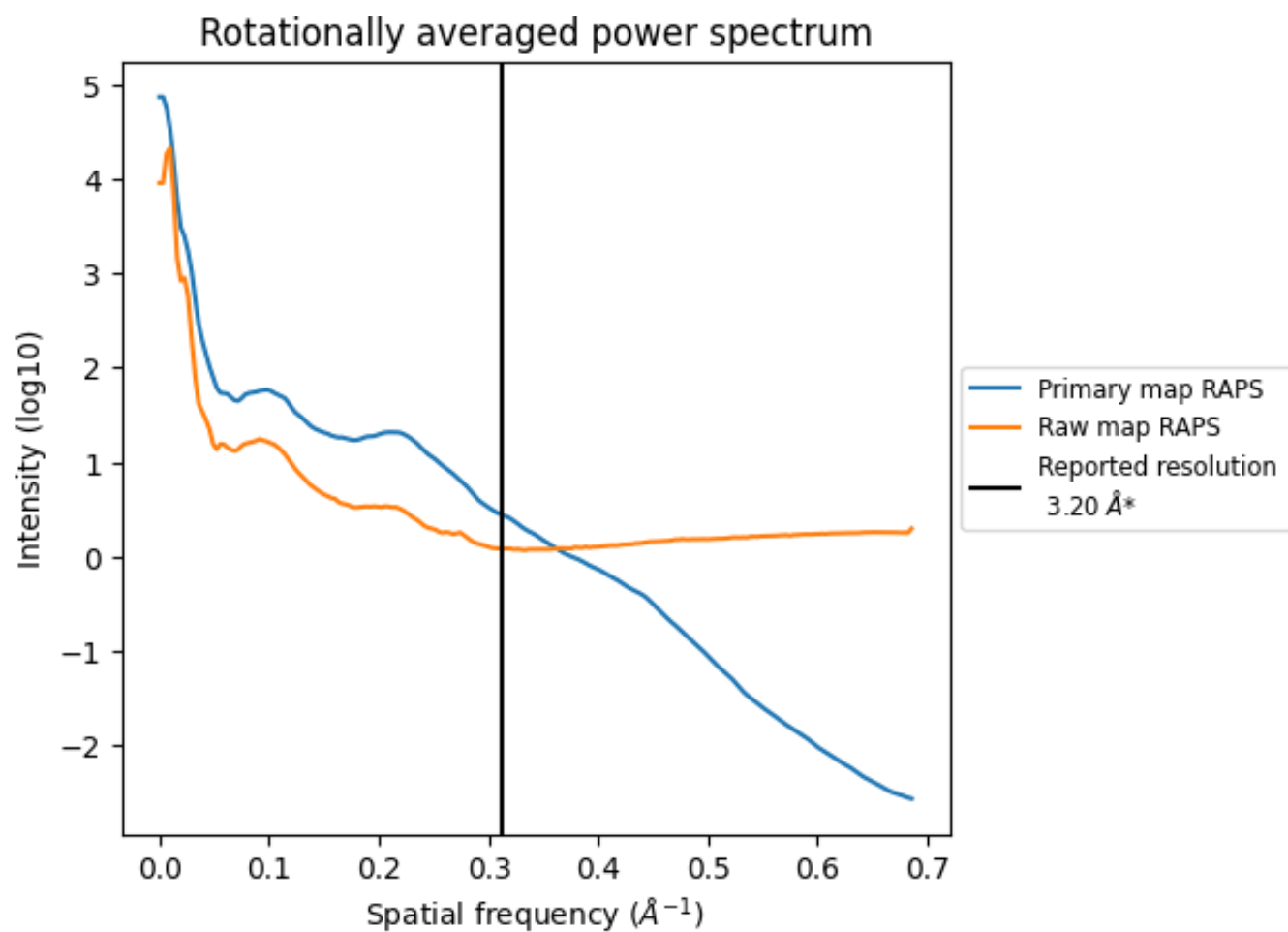
7.2 Volume estimate [i](#)



The volume at the recommended contour level is 35 nm^3 ; this corresponds to an approximate mass of 32 kDa.

The volume estimate graph shows how the enclosed volume varies with the contour level. The recommended contour level is shown as a vertical line and the intersection between the line and the curve gives the volume of the enclosed surface at the given level.

7.3 Rotationally averaged power spectrum ⓘ

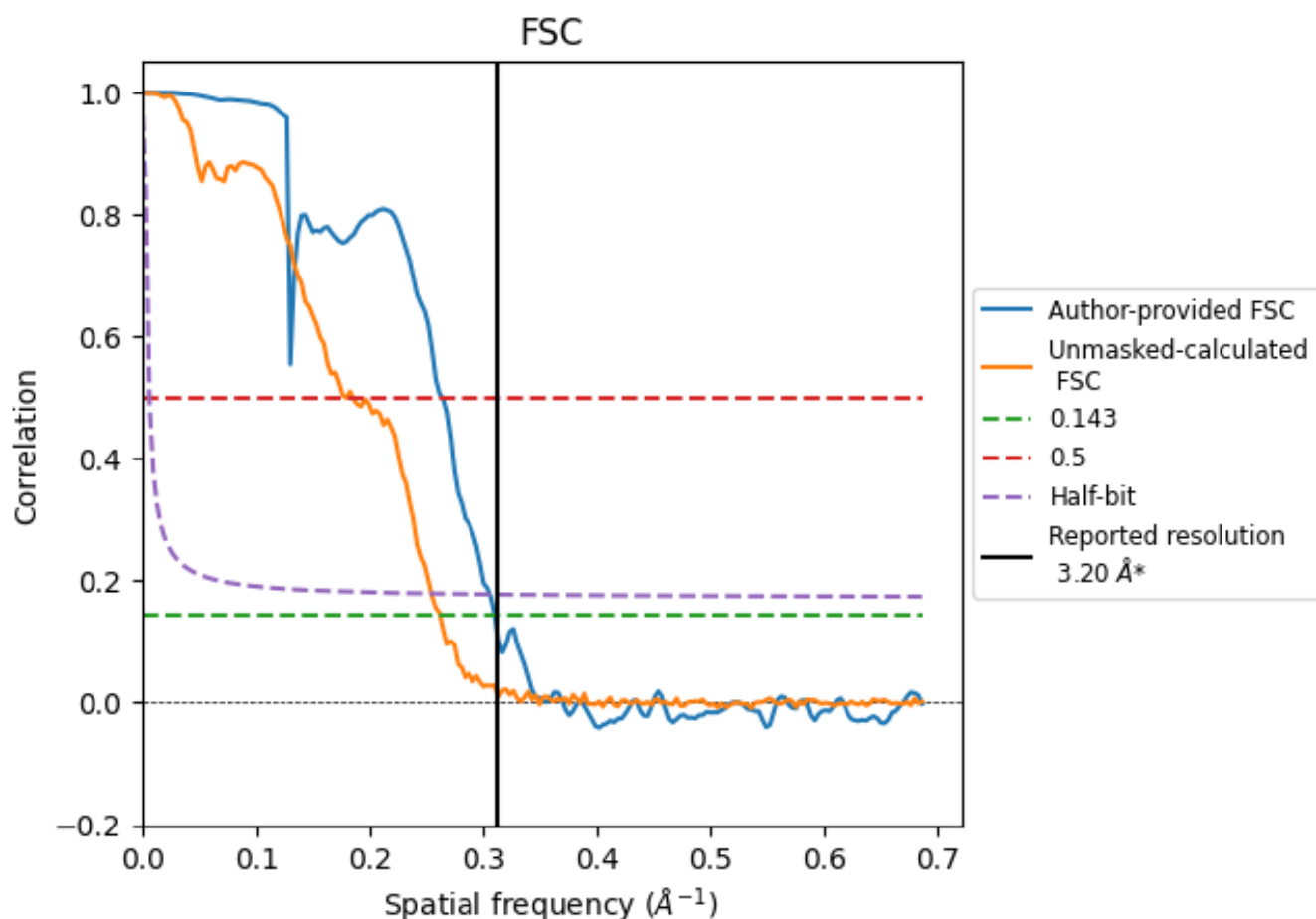


*Reported resolution corresponds to spatial frequency of 0.312 \AA^{-1}

8 Fourier-Shell correlation [i](#)

Fourier-Shell Correlation (FSC) is the most commonly used method to estimate the resolution of single-particle and subtomogram-averaged maps. The shape of the curve depends on the imposed symmetry, mask and whether or not the two 3D reconstructions used were processed from a common reference. The reported resolution is shown as a black line. A curve is displayed for the half-bit criterion in addition to lines showing the 0.143 gold standard cut-off and 0.5 cut-off.

8.1 FSC [i](#)



*Reported resolution corresponds to spatial frequency of 0.312 Å⁻¹

8.2 Resolution estimates [i](#)

Resolution estimate (Å)	Estimation criterion (FSC cut-off)		
	0.143	0.5	Half-bit
Reported by author	3.20	-	-
Author-provided FSC curve	3.22	3.79	3.27
Unmasked-calculated*	3.82	5.39	3.94

*Resolution estimate based on FSC curve calculated by comparison of deposited half-maps. The value from deposited half-maps intersecting FSC 0.143 CUT-OFF 3.82 differs from the reported value 3.2 by more than 10 %

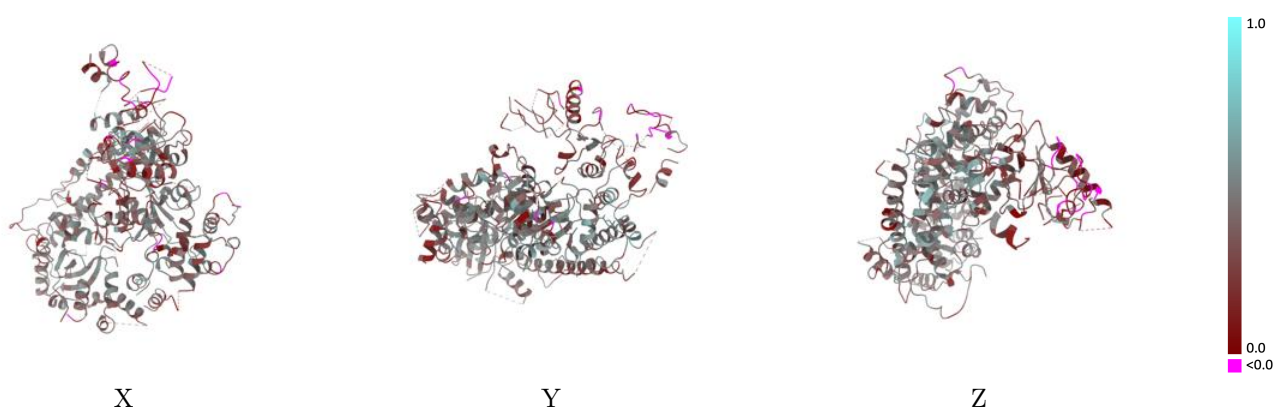
9 Map-model fit [i](#)

This section contains information regarding the fit between EMDB map EMD-49326 and PDB model 9NEL. Per-residue inclusion information can be found in section 3 on page 5.

9.1 Map-model overlay [i](#)

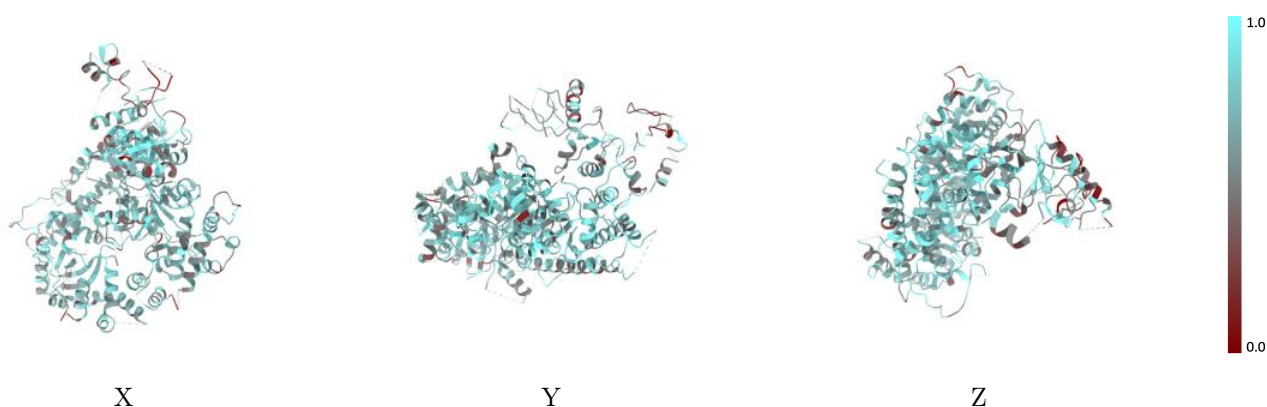
This section was not generated.

9.2 Q-score mapped to coordinate model [i](#)



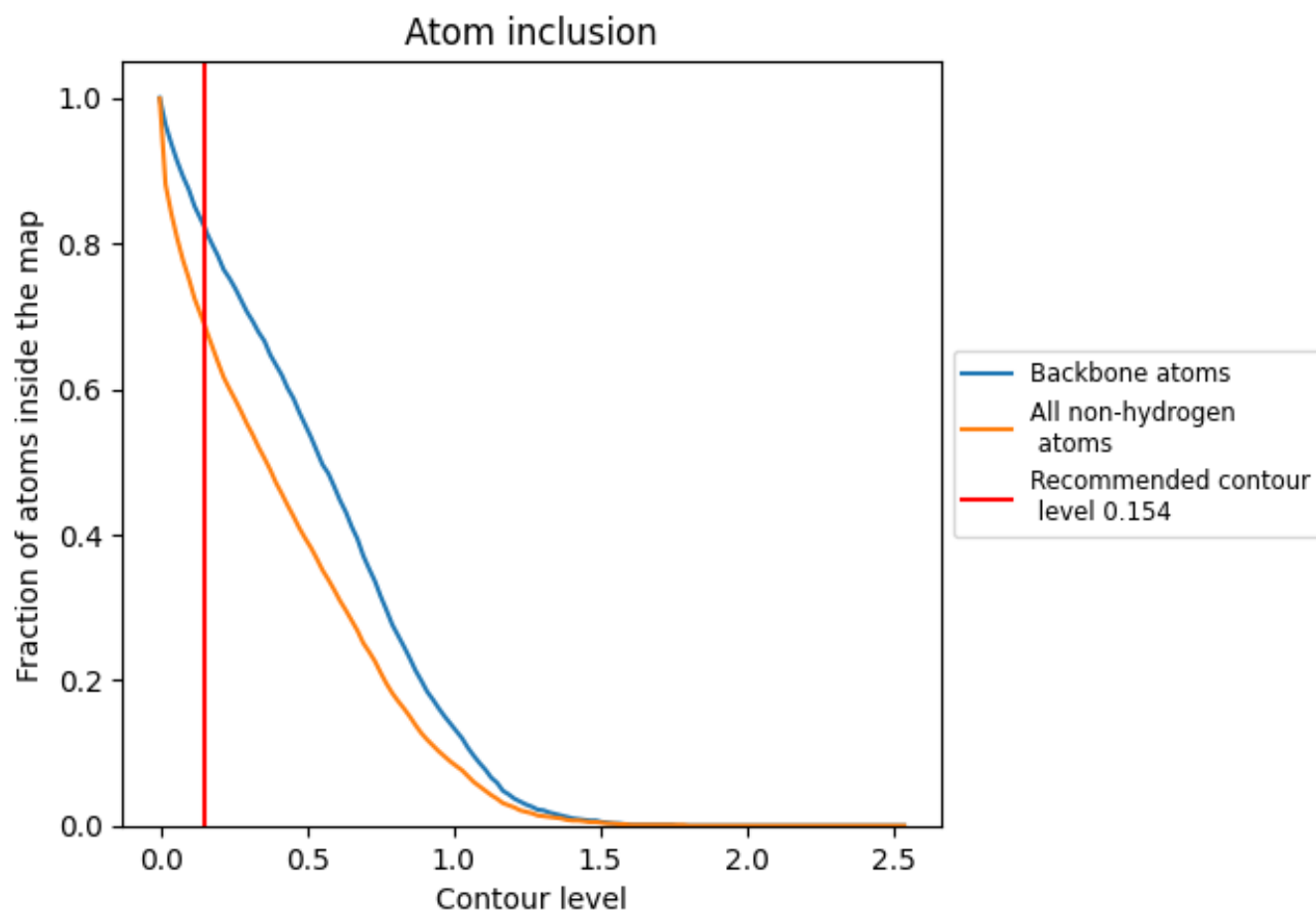
The images above show the model with each residue coloured according to its Q-score. This shows their resolvability in the map with higher Q-score values reflecting better resolvability. Please note: Q-score is calculating the resolvability of atoms, and thus high values are only expected at resolutions at which atoms can be resolved. Low Q-score values may therefore be expected for many entries.

9.3 Atom inclusion mapped to coordinate model [i](#)



The images above show the model with each residue coloured according to its atom inclusion. This shows to what extent they are inside the map at the recommended contour level (0.154).

9.4 Atom inclusion [i](#)



At the recommended contour level, 82% of all backbone atoms, 68% of all non-hydrogen atoms, are inside the map.

9.5 Map-model fit summary ⓘ

The table lists the average atom inclusion at the recommended contour level (0.154) and Q-score for the entire model and for each chain.

Chain	Atom inclusion	Q-score
All	<div></div> 0.6850	<div></div> 0.3740
A	<div></div> 0.6830	<div></div> 0.3800
B	<div></div> 0.6860	<div></div> 0.3690

