



Full wwPDB X-ray Structure Validation Report ⓘ

Aug 18, 2025 – 10:38 AM EDT

PDB ID : 9MLM / pdb_00009mlm
Title : Crystal structure of dihydrofolate reductase (DHFR) from the filarial nematode *W. bancrofti* in complex with NADPH and [2-({4-[(2-amino-4-oxo-4,7-dihydro-3H-pyrrolo[2,3-d]pyrimidin-5-yl)methyl]benzene-1-carbonyl}amino)-4-methoxyphenyl]acetic acid (TSD10 or OED)
Authors : Frey, K.M.; Goodey, N.M.; Kwarteng, S.; Wilhelm, J.
Deposited on : 2024-12-19
Resolution : 1.79 Å(reported)

This is a Full wwPDB X-ray Structure Validation Report for a publicly released PDB entry.

We welcome your comments at validation@mail.wwpdb.org

A user guide is available at

<https://www.wwpdb.org/validation/2017/XrayValidationReportHelp>

with specific help available everywhere you see the ⓘ symbol.

The types of validation reports are described at

<http://www.wwpdb.org/validation/2017/FAQs#types>.

The following versions of software and data (see [references](#) ①) were used in the production of this report:

MolProbity	:	4-5-2 with Phenix2.0rc1
Mogul	:	2022.3.0, CSD as543be (2022)
Xtriage (Phenix)	:	2.0rc1
EDS	:	3.0
buster-report	:	1.1.7 (2018)
Percentile statistics	:	20231227.v01 (using entries in the PDB archive December 27th 2023)
CCP4	:	9.0.006 (Gargrove)
Density-Fitness	:	1.0.12
Ideal geometry (proteins)	:	Engh & Huber (2001)
Ideal geometry (DNA, RNA)	:	Parkinson et al. (1996)
Validation Pipeline (wwPDB-VP)	:	2.45.1

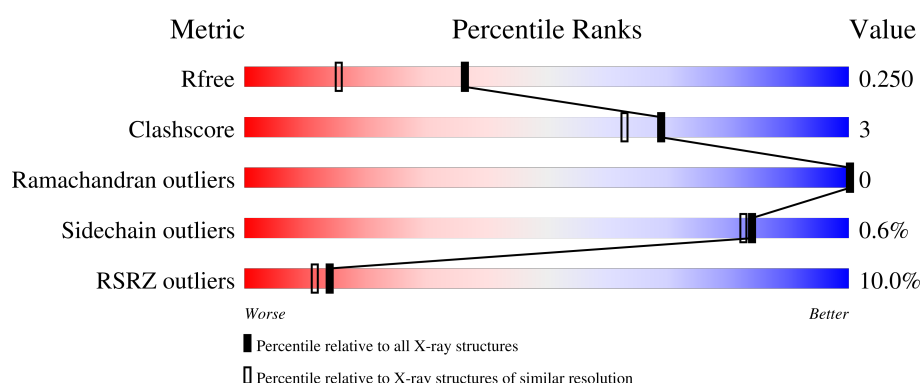
1 Overall quality at a glance

The following experimental techniques were used to determine the structure:

X-RAY DIFFRACTION

The reported resolution of this entry is 1.79 Å.

Percentile scores (ranging between 0-100) for global validation metrics of the entry are shown in the following graphic. The table shows the number of entries on which the scores are based.



Metric	Whole archive (#Entries)	Similar resolution (#Entries, resolution range(Å))
R_{free}	164625	7108 (1.80-1.80)
Clashscore	180529	8162 (1.80-1.80)
Ramachandran outliers	177936	8077 (1.80-1.80)
Sidechain outliers	177891	8076 (1.80-1.80)
RSRZ outliers	164620	7108 (1.80-1.80)

The table below summarises the geometric issues observed across the polymeric chains and their fit to the electron density. The red, orange, yellow and green segments of the lower bar indicate the fraction of residues that contain outliers for ≥ 3 , 2, 1 and 0 types of geometric quality criteria respectively. A grey segment represents the fraction of residues that are not modelled. The numeric value for each fraction is indicated below the corresponding segment, with a dot representing fractions $\leq 5\%$. The upper red bar (where present) indicates the fraction of residues that have poor fit to the electron density. The numeric value is given above the bar.

Mol	Chain	Length	Quality of chain
1	A	195	<div> <div>9%</div> <div>85%</div> <div>7% • 8%</div> </div>

2 Entry composition

There are 4 unique types of molecules in this entry. The entry contains 1577 atoms, of which 0 are hydrogens and 0 are deuteriums.

In the tables below, the ZeroOcc column contains the number of atoms modelled with zero occupancy, the AltConf column contains the number of residues with at least one atom in alternate conformation and the Trace column contains the number of residues modelled with at most 2 atoms.

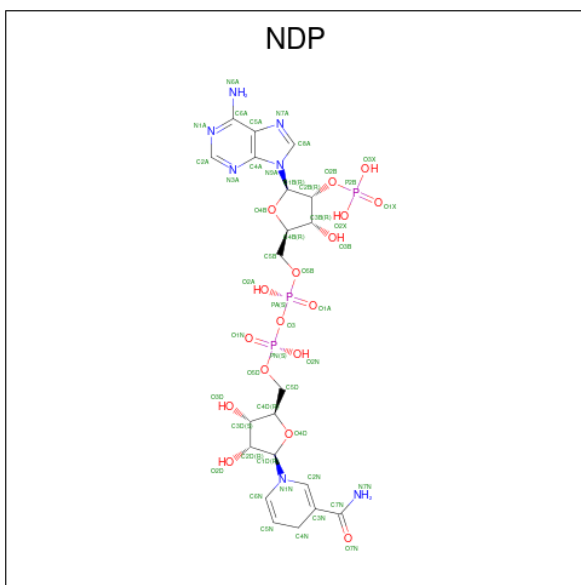
- Molecule 1 is a protein called Dihydrofolate reductase.

Mol	Chain	Residues	Atoms					ZeroOcc	AltConf	Trace
1	A	180	Total	C	N	O	S	2	0	0
			1434	917	243	265	9			

There are 24 discrepancies between the modelled and reference sequences:

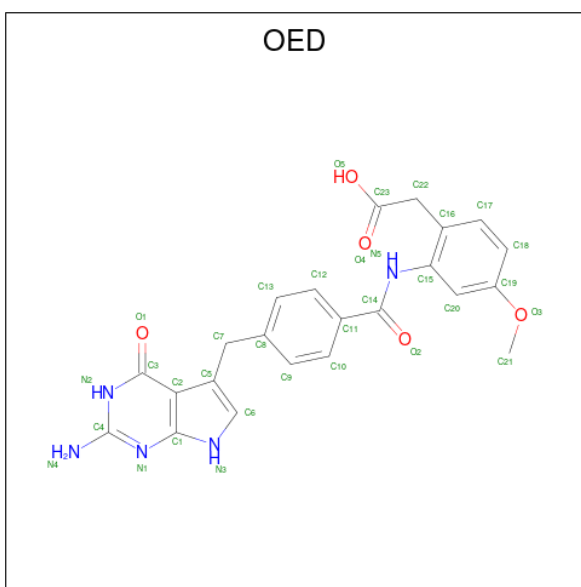
Chain	Residue	Modelled	Actual	Comment	Reference
A	-9	MET	-	initiating methionine	UNP J9F199
A	-8	ALA	-	expression tag	UNP J9F199
A	-7	HIS	-	expression tag	UNP J9F199
A	-6	HIS	-	expression tag	UNP J9F199
A	-5	HIS	-	expression tag	UNP J9F199
A	-4	HIS	-	expression tag	UNP J9F199
A	-3	HIS	-	expression tag	UNP J9F199
A	-2	HIS	-	expression tag	UNP J9F199
A	-1	ALA	-	expression tag	UNP J9F199
A	0	MET	-	expression tag	UNP J9F199
A	1	ALA	-	expression tag	UNP J9F199
A	119	VAL	-	insertion	UNP J9F199
A	120	TYR	-	insertion	UNP J9F199
A	121	GLU	-	insertion	UNP J9F199
A	122	LEU	-	insertion	UNP J9F199
A	123	GLY	-	insertion	UNP J9F199
A	124	LEU	-	insertion	UNP J9F199
A	125	ASN	-	insertion	UNP J9F199
A	126	SER	-	insertion	UNP J9F199
A	127	PRO	-	insertion	UNP J9F199
A	128	PHE	-	insertion	UNP J9F199
A	129	LEU	-	insertion	UNP J9F199
A	130	HIS	-	insertion	UNP J9F199
A	131	GLN	-	insertion	UNP J9F199

- Molecule 2 is NADPH DIHYDRO-NICOTINAMIDE-ADENINE-DINUCLEOTIDE PHOSPHATE (CCD ID: NDP) (formula: C₂₁H₃₀N₇O₁₇P₃).



Mol	Chain	Residues	Atoms	ZeroOcc	AltConf
2	A	1	Total C 1 1	0	0
2	A	1	Total C N O P 47 20 7 17 3	0	0

- Molecule 3 is [2-(4-[(2-amino-4-oxo-4,7-dihydro-3H-pyrrolo[2,3-d]pyrimidin-5-yl)methyl]benzene-1-carbonyl)amino)-4-methoxyphenyl]acetic acid (CCD ID: OED) (formula: C₂₃H₂₁N₅O₅) (labeled as "Ligand of Interest" by depositor).



Mol	Chain	Residues	Atoms				ZeroOcc	AltConf
3	A	1	Total	C	N	O	0	0
			33	23	5	5		

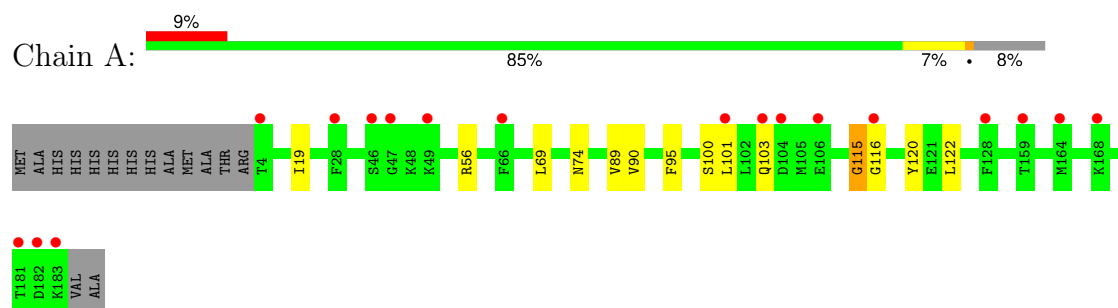
- Molecule 4 is water.

Mol	Chain	Residues	Atoms		ZeroOcc	AltConf
4	A	62	Total	O	0	0
			62	62		

3 Residue-property plots [i](#)

These plots are drawn for all protein, RNA, DNA and oligosaccharide chains in the entry. The first graphic for a chain summarises the proportions of the various outlier classes displayed in the second graphic. The second graphic shows the sequence view annotated by issues in geometry and electron density. Residues are color-coded according to the number of geometric quality criteria for which they contain at least one outlier: green = 0, yellow = 1, orange = 2 and red = 3 or more. A red dot above a residue indicates a poor fit to the electron density ($RSRZ > 2$). Stretches of 2 or more consecutive residues without any outlier are shown as a green connector. Residues present in the sample, but not in the model, are shown in grey.

- Molecule 1: Dihydrofolate reductase



4 Data and refinement statistics

Property	Value	Source
Space group	P 63 2 2	Depositor
Cell constants a, b, c, α , β , γ	133.50Å 133.50Å 75.32Å 90.00° 90.00° 120.00°	Depositor
Resolution (Å)	33.37 – 1.79 33.37 – 1.79	Depositor EDS
% Data completeness (in resolution range)	88.0 (33.37-1.79) 87.9 (33.37-1.79)	Depositor EDS
R_{merge}	(Not available)	Depositor
R_{sym}	(Not available)	Depositor
$\langle I/\sigma(I) \rangle$ ¹	1.30 (at 1.78Å)	Xtriage
Refinement program	PHENIX (1.21.1_5286: ???)	Depositor
R, R_{free}	0.217 , 0.250 0.218 , 0.250	Depositor DCC
R_{free} test set	1606 reflections (4.23%)	wwPDB-VP
Wilson B-factor (Å ²)	28.0	Xtriage
Anisotropy	0.132	Xtriage
Bulk solvent k_{sol} (e/Å ³), B_{sol} (Å ²)	0.39 , 27.6	EDS
L-test for twinning ²	$\langle L \rangle = 0.51$, $\langle L^2 \rangle = 0.35$	Xtriage
Estimated twinning fraction	No twinning to report.	Xtriage
F_o, F_c correlation	0.95	EDS
Total number of atoms	1577	wwPDB-VP
Average B, all atoms (Å ²)	31.0	wwPDB-VP

Xtriage's analysis on translational NCS is as follows: *The largest off-origin peak in the Patterson function is 6.26% of the height of the origin peak. No significant pseudotranslation is detected.*

¹Intensities estimated from amplitudes.

²Theoretical values of $\langle |L| \rangle$, $\langle L^2 \rangle$ for acentric reflections are 0.5, 0.333 respectively for untwinned datasets, and 0.375, 0.2 for perfectly twinned datasets.

5 Model quality [i](#)

5.1 Standard geometry [i](#)

Bond lengths and bond angles in the following residue types are not validated in this section: NDP, OED

The Z score for a bond length (or angle) is the number of standard deviations the observed value is removed from the expected value. A bond length (or angle) with $|Z| > 5$ is considered an outlier worth inspection. RMSZ is the root-mean-square of all Z scores of the bond lengths (or angles).

Mol	Chain	Bond lengths		Bond angles	
		RMSZ	$\# Z > 5$	RMSZ	$\# Z > 5$
1	A	0.19	0/1465	0.39	0/1976

Chiral center outliers are detected by calculating the chiral volume of a chiral center and verifying if the center is modelled as a planar moiety or with the opposite hand. A planarity outlier is detected by checking planarity of atoms in a peptide group, atoms in a mainchain group or atoms of a sidechain that are expected to be planar.

Mol	Chain	#Chirality outliers	#Planarity outliers
1	A	0	1

There are no bond length outliers.

There are no bond angle outliers.

There are no chirality outliers.

All (1) planarity outliers are listed below:

Mol	Chain	Res	Type	Group
1	A	115	GLY	Peptide

5.2 Too-close contacts [i](#)

In the following table, the Non-H and H(model) columns list the number of non-hydrogen atoms and hydrogen atoms in the chain respectively. The H(added) column lists the number of hydrogen atoms added and optimized by MolProbity. The Clashes column lists the number of clashes within the asymmetric unit, whereas Symm-Clashes lists symmetry-related clashes.

Mol	Chain	Non-H	H(model)	H(added)	Clashes	Symm-Clashes
1	A	1434	0	1414	9	0
2	A	48	0	23	4	0

Continued on next page...

Continued from previous page...

Mol	Chain	Non-H	H(model)	H(added)	Clashes	Symm-Clashes
3	A	33	0	0	1	0
4	A	62	0	0	0	0
All	All	1577	0	1437	10	0

The all-atom clashscore is defined as the number of clashes found per 1000 atoms (including hydrogen atoms). The all-atom clashscore for this structure is 3.

All (10) close contacts within the same asymmetric unit are listed below, sorted by their clash magnitude.

Atom-1	Atom-2	Interatomic distance (Å)	Clash overlap (Å)
1:A:69:LEU:H	1:A:74:ASN:HD21	1.32	0.77
2:A:602:NDP:H42N	3:A:603:OED:C6	2.35	0.56
1:A:116:GLY:HA3	2:A:602:NDP:O1A	2.09	0.52
1:A:19:ILE:O	2:A:602:NDP:H2N	2.10	0.51
1:A:115:GLY:HA3	1:A:120:TYR:CZ	2.47	0.50
1:A:69:LEU:H	1:A:74:ASN:ND2	2.05	0.48
1:A:95:PHE:HB2	1:A:122:LEU:HD13	1.98	0.46
1:A:90:VAL:HG11	1:A:101:LEU:HD21	1.99	0.44
1:A:100:SER:HA	1:A:103:GLN:HE21	1.85	0.41
1:A:56:ARG:NE	2:A:602:NDP:O2X	2.49	0.40

There are no symmetry-related clashes.

5.3 Torsion angles [i](#)

5.3.1 Protein backbone [i](#)

In the following table, the Percentiles column shows the percent Ramachandran outliers of the chain as a percentile score with respect to all X-ray entries followed by that with respect to entries of similar resolution.

The Analysed column shows the number of residues for which the backbone conformation was analysed, and the total number of residues.

Mol	Chain	Analysed	Favoured	Allowed	Outliers	Percentiles	
1	A	178/195 (91%)	176 (99%)	2 (1%)	0	100	100

There are no Ramachandran outliers to report.

5.3.2 Protein sidechains [i](#)

In the following table, the Percentiles column shows the percent sidechain outliers of the chain as a percentile score with respect to all X-ray entries followed by that with respect to entries of similar resolution.

The Analysed column shows the number of residues for which the sidechain conformation was analysed, and the total number of residues.

Mol	Chain	Analysed	Rotameric	Outliers	Percentiles	
1	A	154/169 (91%)	153 (99%)	1 (1%)	84	82

All (1) residues with a non-rotameric sidechain are listed below:

Mol	Chain	Res	Type
1	A	89	VAL

Sometimes sidechains can be flipped to improve hydrogen bonding and reduce clashes. All (2) such sidechains are listed below:

Mol	Chain	Res	Type
1	A	74	ASN
1	A	103	GLN

5.3.3 RNA [i](#)

There are no RNA molecules in this entry.

5.4 Non-standard residues in protein, DNA, RNA chains [i](#)

There are no non-standard protein/DNA/RNA residues in this entry.

5.5 Carbohydrates [i](#)

There are no oligosaccharides in this entry.

5.6 Ligand geometry [i](#)

Of 3 ligands modelled in this entry, 1 is modelled with single atom - leaving 2 for Mogul analysis.

In the following table, the Counts columns list the number of bonds (or angles) for which Mogul statistics could be retrieved, the number of bonds (or angles) that are observed in the model and

the number of bonds (or angles) that are defined in the Chemical Component Dictionary. The Link column lists molecule types, if any, to which the group is linked. The Z score for a bond length (or angle) is the number of standard deviations the observed value is removed from the expected value. A bond length (or angle) with $|Z| > 2$ is considered an outlier worth inspection. RMSZ is the root-mean-square of all Z scores of the bond lengths (or angles).

Mol	Type	Chain	Res	Link	Bond lengths			Bond angles		
					Counts	RMSZ	$\# Z > 2$	Counts	RMSZ	$\# Z > 2$
3	OED	A	603	-	35,36,36	2.61	10 (28%)	41,51,51	1.57	6 (14%)
2	NDP	A	602	-	44,50,52	2.46	4 (9%)	57,76,80	1.53	13 (22%)

In the following table, the Chirals column lists the number of chiral outliers, the number of chiral centers analysed, the number of these observed in the model and the number defined in the Chemical Component Dictionary. Similar counts are reported in the Torsion and Rings columns. '-' means no outliers of that kind were identified.

Mol	Type	Chain	Res	Link	Chirals	Torsions	Rings
3	OED	A	603	-	-	8/18/18/18	0/4/4/4
2	NDP	A	602	-	-	1/24/68/77	0/5/5/5

All (14) bond length outliers are listed below:

Mol	Chain	Res	Type	Atoms	Z	Observed(Å)	Ideal(Å)
2	A	602	NDP	P2B-O2B	10.61	1.78	1.59
3	A	603	OED	O1-C3	9.76	1.46	1.23
2	A	602	NDP	PA-O3	8.39	1.68	1.59
2	A	602	NDP	PN-O5D	5.58	1.75	1.54
3	A	603	OED	C4-N4	4.33	1.44	1.34
3	A	603	OED	C2-C3	-3.86	1.39	1.47
3	A	603	OED	C22-C16	3.78	1.56	1.51
3	A	603	OED	O2-C14	-3.70	1.14	1.23
3	A	603	OED	C14-N5	3.53	1.46	1.35
2	A	602	NDP	O2B-C2B	-3.49	1.32	1.44
3	A	603	OED	C15-N5	3.37	1.48	1.41
3	A	603	OED	O3-C19	3.24	1.44	1.37
3	A	603	OED	C11-C14	3.20	1.57	1.50
3	A	603	OED	C2-C1	-2.15	1.39	1.42

All (19) bond angle outliers are listed below:

Mol	Chain	Res	Type	Atoms	Z	Observed(°)	Ideal(°)
3	A	603	OED	C6-C5-C2	4.97	107.64	104.79
3	A	603	OED	C2-C3-N2	3.88	119.39	115.05
3	A	603	OED	C15-N5-C14	-3.84	116.22	126.90

Continued on next page...

Continued from previous page...

Mol	Chain	Res	Type	Atoms	Z	Observed(°)	Ideal(°)
2	A	602	NDP	O2B-P2B-O1X	-3.56	96.63	109.33
2	A	602	NDP	O2N-PN-O3	3.38	115.97	104.64
3	A	603	OED	C11-C14-N5	3.17	123.60	115.90
2	A	602	NDP	P2B-O2B-C2B	-2.70	116.23	123.43
2	A	602	NDP	O3X-P2B-O2X	2.62	117.63	107.80
2	A	602	NDP	PA-O5B-C5B	-2.48	107.11	121.35
2	A	602	NDP	C4B-O4B-C1B	-2.46	107.67	109.92
2	A	602	NDP	O5D-PN-O3	2.43	112.77	104.64
2	A	602	NDP	O2N-PN-O1N	2.32	119.88	110.83
2	A	602	NDP	O2B-C2B-C1B	-2.31	101.93	110.05
3	A	603	OED	C4-N2-C3	-2.26	120.97	125.11
2	A	602	NDP	O5D-PN-O1N	-2.24	102.09	110.83
3	A	603	OED	O2-C14-N5	-2.14	118.30	123.75
2	A	602	NDP	C2B-C3B-C4B	-2.14	97.39	101.99
2	A	602	NDP	C3B-C2B-C1B	-2.02	98.94	102.81
2	A	602	NDP	O2A-PA-O1A	2.00	121.76	112.44

There are no chirality outliers.

All (9) torsion outliers are listed below:

Mol	Chain	Res	Type	Atoms
3	A	603	OED	C20-C19-O3-C21
3	A	603	OED	C18-C19-O3-C21
3	A	603	OED	C10-C11-C14-O2
3	A	603	OED	C12-C11-C14-O2
3	A	603	OED	C10-C11-C14-N5
3	A	603	OED	C12-C11-C14-N5
3	A	603	OED	C20-C15-N5-C14
3	A	603	OED	C16-C15-N5-C14
2	A	602	NDP	O4D-C1D-N1N-C2N

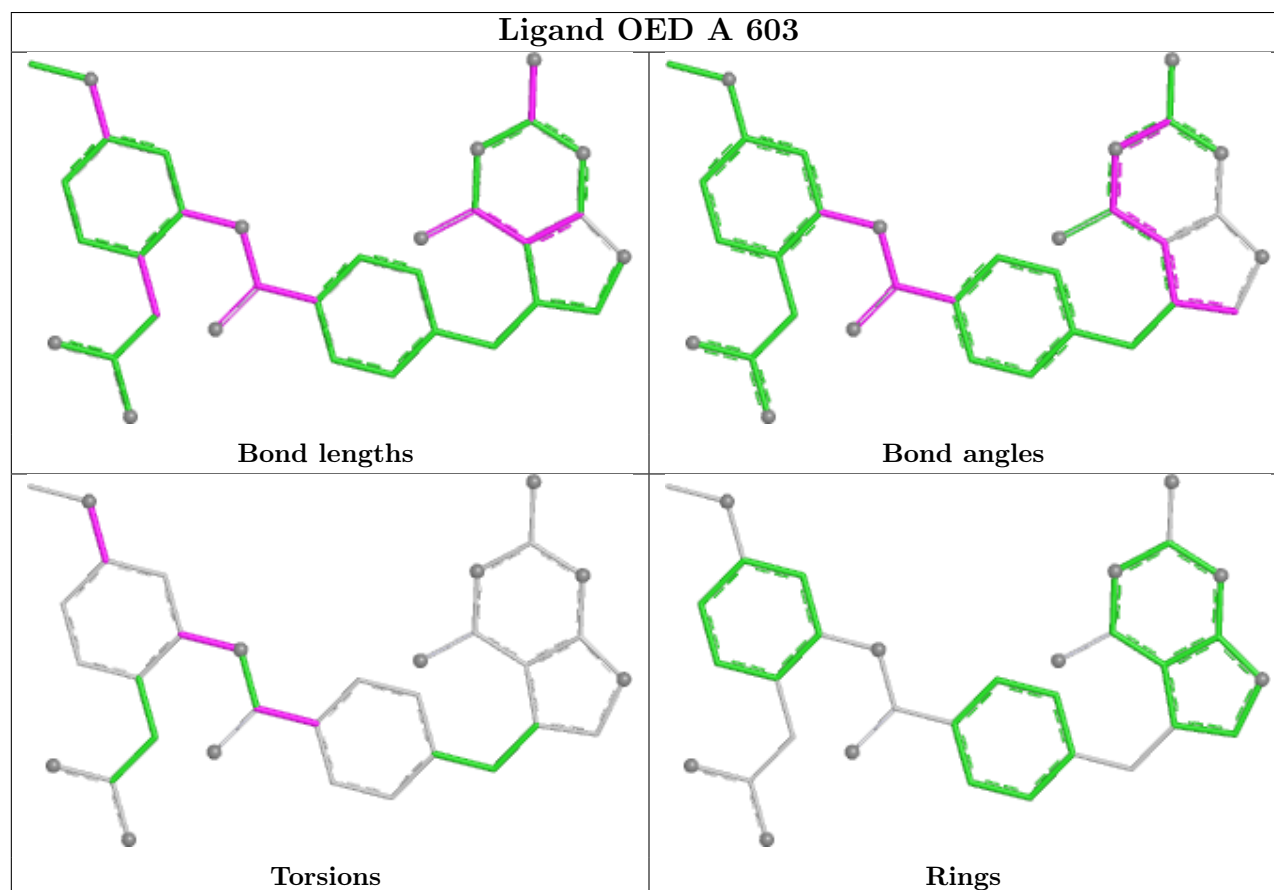
There are no ring outliers.

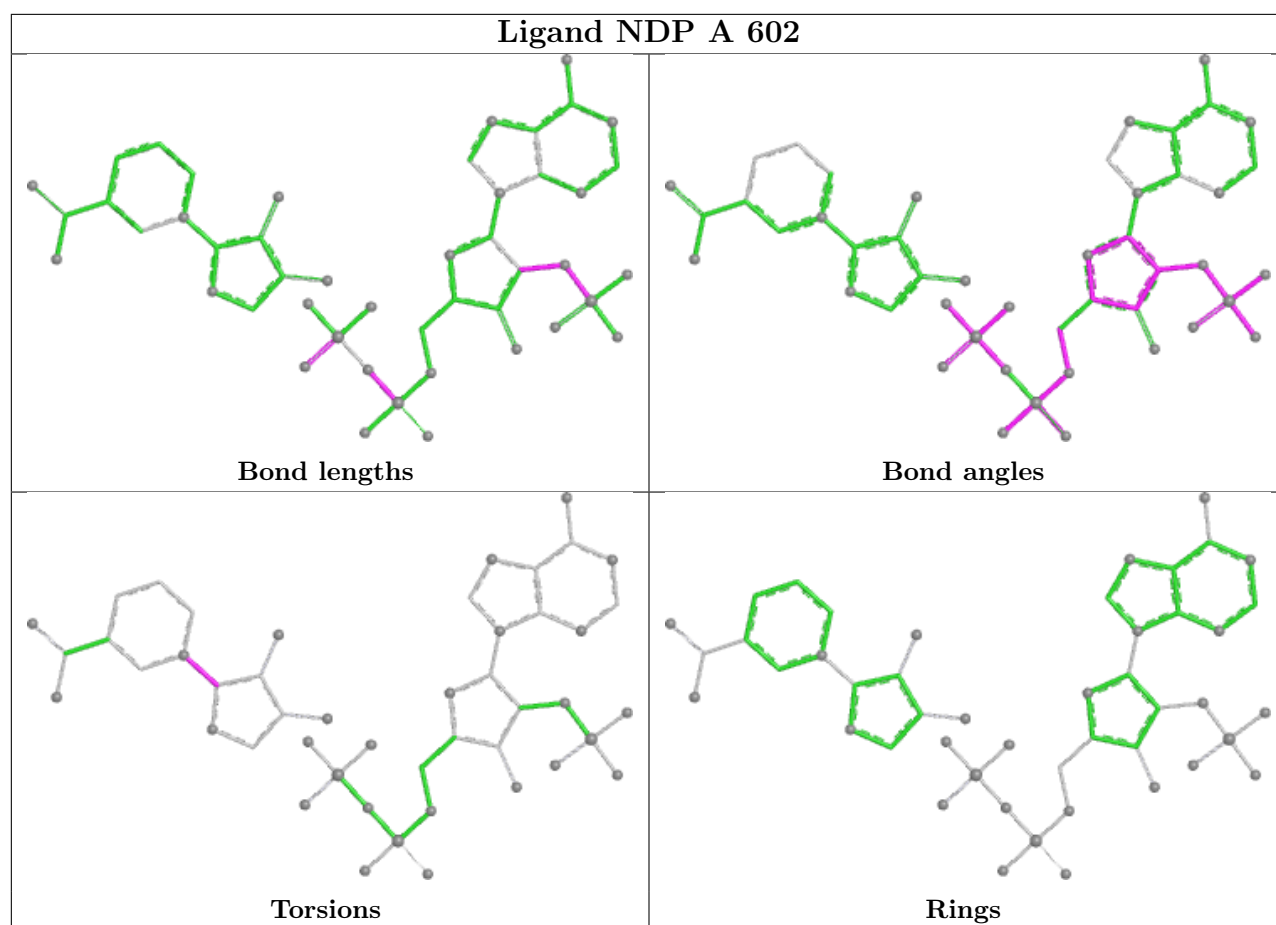
2 monomers are involved in 4 short contacts:

Mol	Chain	Res	Type	Clashes	Symm-Clashes
3	A	603	OED	1	0
2	A	602	NDP	4	0

The following is a two-dimensional graphical depiction of Mogul quality analysis of bond lengths, bond angles, torsion angles, and ring geometry for all instances of the Ligand of Interest. In addition, ligands with molecular weight > 250 and outliers as shown on the validation Tables will

also be included. For torsion angles, if less than 5% of the Mogul distribution of torsion angles is within 10 degrees of the torsion angle in question, then that torsion angle is considered an outlier. Any bond that is central to one or more torsion angles identified as an outlier by Mogul will be highlighted in the graph. For rings, the root-mean-square deviation (RMSD) between the ring in question and similar rings identified by Mogul is calculated over all ring torsion angles. If the average RMSD is greater than 60 degrees and the minimal RMSD between the ring in question and any Mogul-identified rings is also greater than 60 degrees, then that ring is considered an outlier. The outliers are highlighted in purple. The color gray indicates Mogul did not find sufficient equivalents in the CSD to analyse the geometry.





5.7 Other polymers [i](#)

There are no such residues in this entry.

5.8 Polymer linkage issues [i](#)

There are no chain breaks in this entry.

6 Fit of model and data [i](#)

6.1 Protein, DNA and RNA chains [i](#)

In the following table, the column labelled ‘#RSRZ> 2’ contains the number (and percentage) of RSRZ outliers, followed by percent RSRZ outliers for the chain as percentile scores relative to all X-ray entries and entries of similar resolution. The OWAB column contains the minimum, median, 95th percentile and maximum values of the occupancy-weighted average B-factor per residue. The column labelled ‘Q< 0.9’ lists the number of (and percentage) of residues with an average occupancy less than 0.9.

Mol	Chain	Analysed	<RSRZ>	#RSRZ>2	OWAB(Å ²)	Q<0.9
1	A	180/195 (92%)	0.60	18 (10%) 14 11	22, 29, 46, 54	2 (1%)

All (18) RSRZ outliers are listed below:

Mol	Chain	Res	Type	RSRZ
1	A	183	LYS	7.8
1	A	4	THR	6.3
1	A	47	GLY	5.4
1	A	181	THR	4.2
1	A	116	GLY	3.8
1	A	46	SER	3.3
1	A	106	GLU	3.3
1	A	66	PHE	3.2
1	A	182	ASP	3.0
1	A	28	PHE	2.7
1	A	103	GLN	2.4
1	A	168	LYS	2.3
1	A	128	PHE	2.2
1	A	49	LYS	2.2
1	A	101	LEU	2.2
1	A	159	THR	2.1
1	A	164	MET	2.0
1	A	104	ASP	2.0

6.2 Non-standard residues in protein, DNA, RNA chains [i](#)

There are no non-standard protein/DNA/RNA residues in this entry.

6.3 Carbohydrates [i](#)

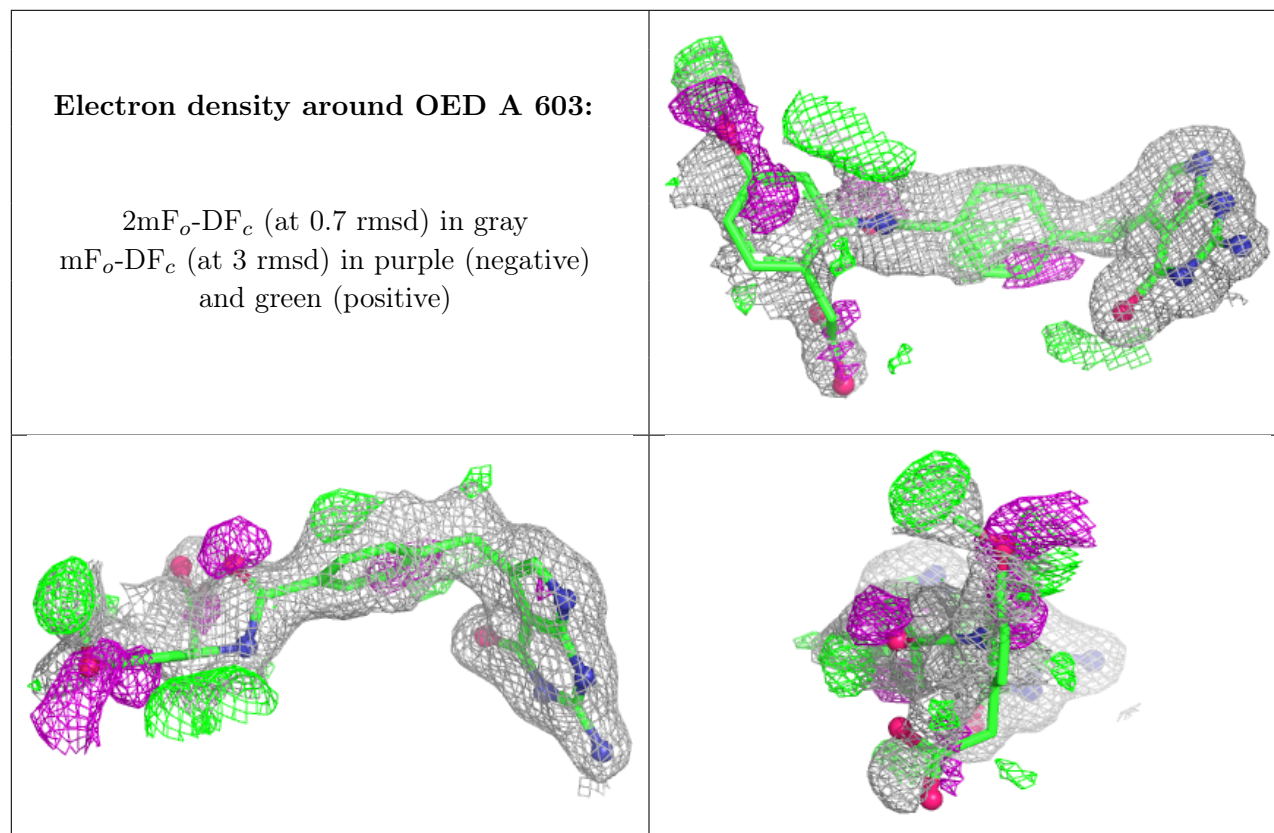
There are no oligosaccharides in this entry.

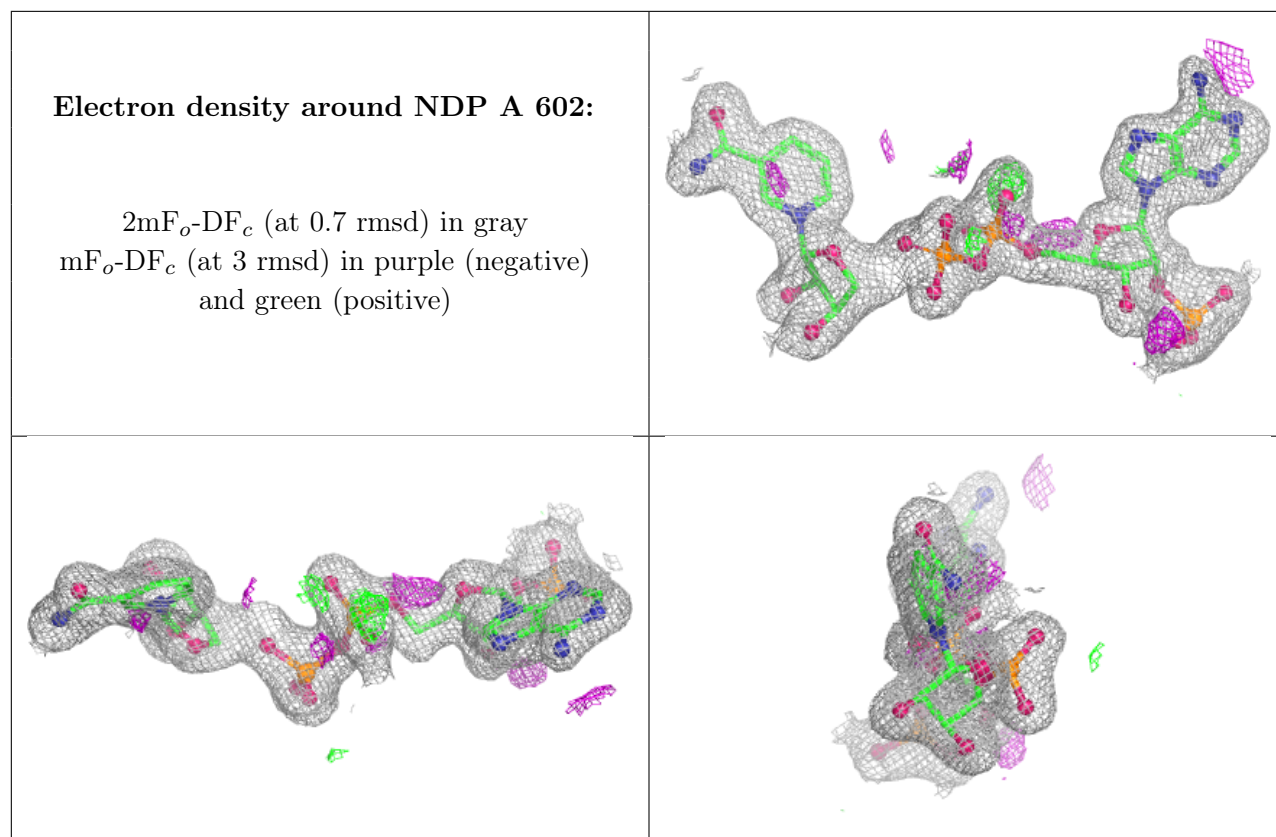
6.4 Ligands [i](#)

In the following table, the Atoms column lists the number of modelled atoms in the group and the number defined in the chemical component dictionary. The B-factors column lists the minimum, median, 95th percentile and maximum values of B factors of atoms in the group. The column labelled 'Q< 0.9' lists the number of atoms with occupancy less than 0.9.

Mol	Type	Chain	Res	Atoms	RSCC	RSR	B-factors(\AA^2)	Q<0.9
3	OED	A	603	33/33	0.83	0.20	23,47,66,67	0
2	NDP	A	601	1/48	0.90	0.14	28,28,28,28	0
2	NDP	A	602	47/48	0.96	0.07	22,26,29,32	0

The following is a graphical depiction of the model fit to experimental electron density of all instances of the Ligand of Interest. In addition, ligands with molecular weight > 250 and outliers as shown on the geometry validation Tables will also be included. Each fit is shown from different orientation to approximate a three-dimensional view.





6.5 Other polymers [i](#)

There are no such residues in this entry.