



Full wwPDB X-ray Structure Validation Report ⓘ

Aug 25, 2025 – 12:22 PM EDT

PDB ID : 9MH6 / pdb_00009mh6
Title : Structure of N-3 aminoglycoside acetyltransferase XIa (AAC(3)-XIa) in complex with acetylamino coenzyme A and gentamicin
Authors : Zielinski, M.; Hemmings, M.; Golkar, T.; Blanchet, J.; Berghuis, A.M.
Deposited on : 2024-12-11
Resolution : 1.37 Å(reported)

This is a Full wwPDB X-ray Structure Validation Report for a publicly released PDB entry.

We welcome your comments at validation@mail.wwpdb.org

A user guide is available at

<https://www.wwpdb.org/validation/2017/XrayValidationReportHelp>

with specific help available everywhere you see the ⓘ symbol.

The types of validation reports are described at

<http://www.wwpdb.org/validation/2017/FAQs#types>.

The following versions of software and data (see [references ⓘ](#)) were used in the production of this report:

MolProbity : 4-5-2 with Phenix2.0rc1
Mogul : 2022.3.0, CSD as543be (2022)
Xtriage (Phenix) : 2.0rc1
EDS : 3.0
buster-report : 1.1.7 (2018)
Percentile statistics : 20231227.v01 (using entries in the PDB archive December 27th 2023)
CCP4 : 9.0.006 (Gargrove)
Density-Fitness : 1.0.12
Ideal geometry (proteins) : Engh & Huber (2001)
Ideal geometry (DNA, RNA) : Parkinson et al. (1996)
Validation Pipeline (wwPDB-VP) : 2.45.1

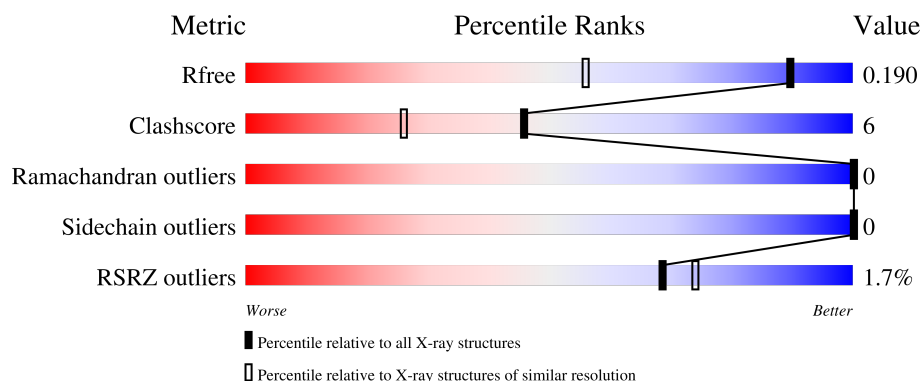
1 Overall quality at a glance

The following experimental techniques were used to determine the structure:

X-RAY DIFFRACTION

The reported resolution of this entry is 1.37 Å.

Percentile scores (ranging between 0-100) for global validation metrics of the entry are shown in the following graphic. The table shows the number of entries on which the scores are based.



Metric	Whole archive (#Entries)	Similar resolution (#Entries, resolution range(Å))
R_{free}	164625	3869 (1.40-1.36)
Clashscore	180529	4183 (1.40-1.36)
Ramachandran outliers	177936	4116 (1.40-1.36)
Sidechain outliers	177891	4115 (1.40-1.36)
RSRZ outliers	164620	3867 (1.40-1.36)

The table below summarises the geometric issues observed across the polymeric chains and their fit to the electron density. The red, orange, yellow and green segments of the lower bar indicate the fraction of residues that contain outliers for ≥ 3 , 2, 1 and 0 types of geometric quality criteria respectively. A grey segment represents the fraction of residues that are not modelled. The numeric value for each fraction is indicated below the corresponding segment, with a dot representing fractions $\leq 5\%$. The upper red bar (where present) indicates the fraction of residues that have poor fit to the electron density. The numeric value is given above the bar.

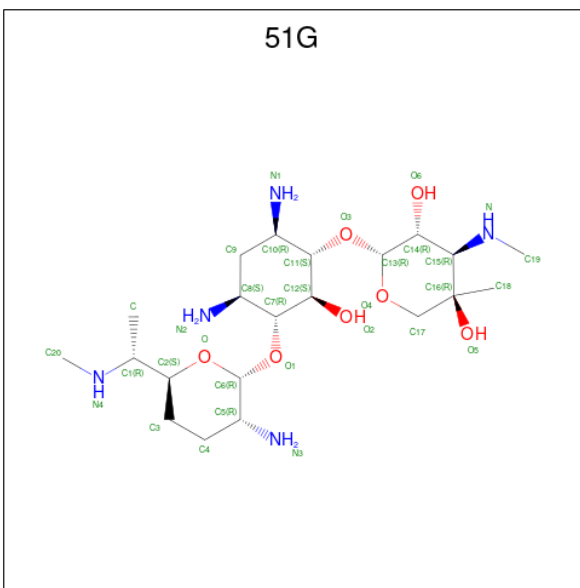
Mol	Chain	Length	Quality of chain
1	A	148	<div> <div> <div></div> <div>91%</div> <div>6%</div> <div></div> </div> <div> <div></div> <div></div> <div></div> <div></div> </div> </div>
1	B	148	<div> <div> <div></div> <div>84%</div> <div>12%</div> <div></div> </div> <div> <div></div> <div></div> <div></div> <div></div> </div> </div>

In the tables below, the ZeroOcc column contains the number of atoms modelled with zero occupancy, the AltConf column contains the number of residues with at least one atom in alternate conformation and the Trace column contains the number of residues modelled with at most 2 atoms.

- Molecule 1 is a protein called Aminoglycoside N-acetyltransferase AAC(3)-XI.

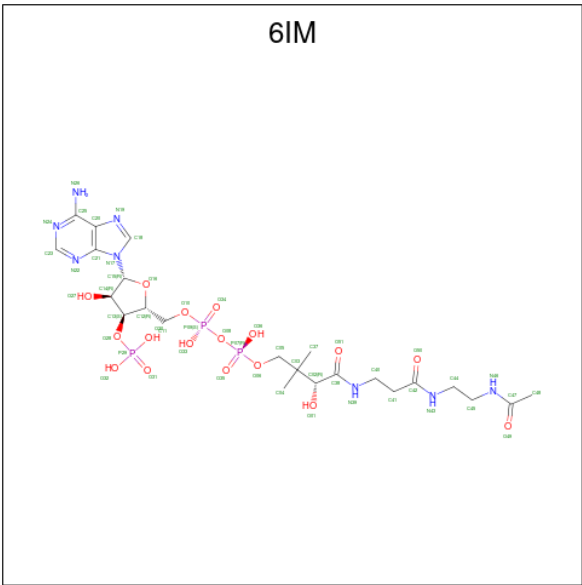
Mol	Chain	Residues	Atoms						ZeroOcc	AltConf	Trace
1	A	143	Total 2409	C 771	H 1187	N 213	O 235	S 3	0	16	0
1	B	143	Total 2374	C 767	H 1161	N 215	O 229	S 2	0	12	0

- Molecule 2 is gentamicin C1 (CCD ID: 51G) (formula: $C_{21}H_{43}N_5O_7$) (labeled as "Ligand of Interest" by depositor).



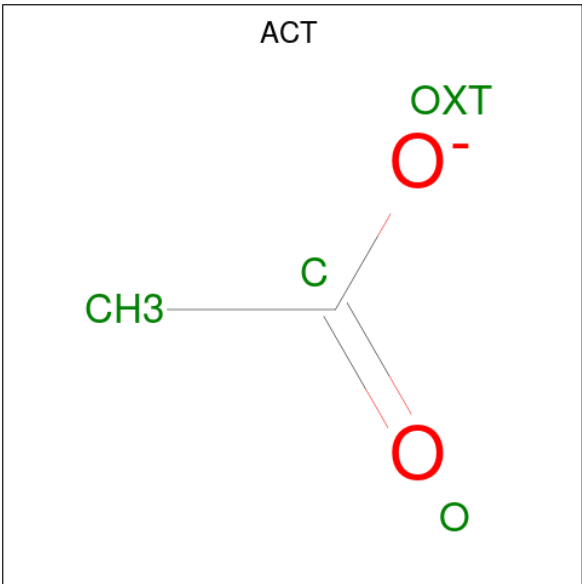
Mol	Chain	Residues	Atoms					ZeroOcc	AltConf
2	A	1	Total	C	H	N	O	0	0
			76	21	43	5	7		

- Molecule 3 is acetylamino coenzyme A (CCD ID: 6IM) (formula: $\text{C}_{23}\text{H}_{39}\text{N}_8\text{O}_{17}\text{P}_3$) (labeled as "Ligand of Interest" by depositor).



Mol	Chain	Residues	Atoms						ZeroOcc	AltConf
3	A	1	Total	C	H	N	O	P	0	1
			172	46	70	16	34	6		
3	B	1	Total	C	H	N	O	P	0	1
			258	69	105	24	51	9		

- Molecule 4 is ACETATE ION (CCD ID: ACT) (formula: C₂H₃O₂) (labeled as "Ligand of Interest" by depositor).



Mol	Chain	Residues	Atoms				ZeroOcc	AltConf
4	A	1	Total	C	H	O	0	0
			7	2	3	2		

- Molecule 5 is water.

Mol	Chain	Residues	Atoms		ZeroOcc	AltConf
5	A	131	Total 132	O 132	0	1
5	B	129	Total 131	O 131	0	1

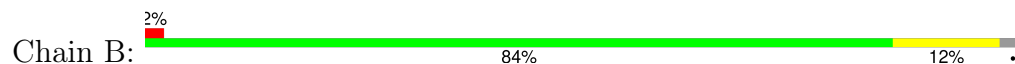
3 Residue-property plots [i](#)

These plots are drawn for all protein, RNA, DNA and oligosaccharide chains in the entry. The first graphic for a chain summarises the proportions of the various outlier classes displayed in the second graphic. The second graphic shows the sequence view annotated by issues in geometry and electron density. Residues are color-coded according to the number of geometric quality criteria for which they contain at least one outlier: green = 0, yellow = 1, orange = 2 and red = 3 or more. A red dot above a residue indicates a poor fit to the electron density ($RSRZ > 2$). Stretches of 2 or more consecutive residues without any outlier are shown as a green connector. Residues present in the sample, but not in the model, are shown in grey.

- Molecule 1: Aminoglycoside N-acetyltransferase AAC(3)-XI



- Molecule 1: Aminoglycoside N-acetyltransferase AAC(3)-XI



4 Data and refinement statistics

Property	Value	Source
Space group	P 1 21 1	Depositor
Cell constants a, b, c, α , β , γ	35.37Å 100.63Å 39.18Å 90.00° 106.62° 90.00°	Depositor
Resolution (Å)	37.54 – 1.37 37.54 – 1.37	Depositor EDS
% Data completeness (in resolution range)	97.4 (37.54-1.37) 97.4 (37.54-1.37)	Depositor EDS
R_{merge}	(Not available)	Depositor
R_{sym}	(Not available)	Depositor
$\langle I/\sigma(I) \rangle$ ¹	1.22 (at 1.37Å)	Xtriage
Refinement program	PHENIX 1.19.2_4158	Depositor
R, R_{free}	0.163 , 0.190 0.162 , 0.190	Depositor DCC
R_{free} test set	2000 reflections (2.67%)	wwPDB-VP
Wilson B-factor (Å ²)	15.4	Xtriage
Anisotropy	0.347	Xtriage
Bulk solvent k_{sol} (e/Å ³), B_{sol} (Å ²)	0.41 , 42.6	EDS
L-test for twinning ²	$\langle L \rangle = 0.50$, $\langle L^2 \rangle = 0.33$	Xtriage
Estimated twinning fraction	No twinning to report.	Xtriage
F_o, F_c correlation	0.97	EDS
Total number of atoms	5559	wwPDB-VP
Average B, all atoms (Å ²)	24.0	wwPDB-VP

Xtriage's analysis on translational NCS is as follows: *The largest off-origin peak in the Patterson function is 8.22% of the height of the origin peak. No significant pseudotranslation is detected.*

¹Intensities estimated from amplitudes.

²Theoretical values of $\langle |L| \rangle$, $\langle L^2 \rangle$ for acentric reflections are 0.5, 0.333 respectively for untwinned datasets, and 0.375, 0.2 for perfectly twinned datasets.

5 Model quality [i](#)

5.1 Standard geometry [i](#)

Bond lengths and bond angles in the following residue types are not validated in this section: 6IM, 51G, ACT

The Z score for a bond length (or angle) is the number of standard deviations the observed value is removed from the expected value. A bond length (or angle) with $|Z| > 5$ is considered an outlier worth inspection. RMSZ is the root-mean-square of all Z scores of the bond lengths (or angles).

Mol	Chain	Bond lengths		Bond angles	
		RMSZ	$\# Z > 5$	RMSZ	$\# Z > 5$
1	A	0.77	0/1276	0.81	0/1730
1	B	0.74	1/1256 (0.1%)	0.78	0/1701
All	All	0.76	1/2532 (0.0%)	0.79	0/3431

All (1) bond length outliers are listed below:

Mol	Chain	Res	Type	Atoms	Z	Observed(Å)	Ideal(Å)
1	B	136	GLU	CD-OE1	6.84	1.38	1.25

There are no bond angle outliers.

There are no chirality outliers.

There are no planarity outliers.

5.2 Too-close contacts [i](#)

In the following table, the Non-H and H(model) columns list the number of non-hydrogen atoms and hydrogen atoms in the chain respectively. The H(added) column lists the number of hydrogen atoms added and optimized by MolProbity. The Clashes column lists the number of clashes within the asymmetric unit, whereas Symm-Clashes lists symmetry-related clashes.

Mol	Chain	Non-H	H(model)	H(added)	Clashes	Symm-Clashes
1	A	1222	1187	1140	11	0
1	B	1213	1161	1158	15	0
2	A	33	43	0	2	0
3	A	102	70	0	5	0
3	B	153	105	0	2	0
4	A	4	3	3	0	0
5	A	132	0	0	4	2
5	B	131	0	0	7	2

Continued on next page...

Continued from previous page...

Mol	Chain	Non-H	H(model)	H(added)	Clashes	Symm-Clashes
All	All	2990	2569	2301	29	2

The all-atom clashscore is defined as the number of clashes found per 1000 atoms (including hydrogen atoms). The all-atom clashscore for this structure is 6.

All (29) close contacts within the same asymmetric unit are listed below, sorted by their clash magnitude.

Atom-1	Atom-2	Interatomic distance (Å)	Clash overlap (Å)
1:B:71:TYR:O	5:B:415[B]:HOH:O	1.87	0.92
1:B:6:GLU:N	5:B:401:HOH:O	2.10	0.82
1:B:23:ARG:NH2	5:B:404:HOH:O	2.18	0.77
3:A:202[A]:6IM:O32	5:A:301:HOH:O	2.03	0.76
1:A:115[A]:ASN:ND2	1:A:143:LEU:CD2	2.53	0.72
1:A:119:VAL:HG11	5:B:469:HOH:O	1.89	0.71
1:A:115[A]:ASN:ND2	1:A:143:LEU:HD22	2.10	0.67
1:A:114:ILE:HD12	1:A:132[B]:LEU:HD13	1.78	0.66
1:B:102[A]:GLU:CD	5:B:402:HOH:O	2.44	0.60
1:B:116[B]:VAL:HG11	1:B:127[B]:TYR:CE2	2.36	0.59
1:B:128[B]:GLU:OE2	5:B:403:HOH:O	2.16	0.59
1:B:127[B]:TYR:OH	3:B:301[B]:6IM:N46	2.36	0.58
1:A:94:THR:OG1	3:A:202[A]:6IM:O33	2.18	0.55
5:A:339:HOH:O	1:B:75[B]:VAL:HG21	2.07	0.54
1:B:102[A]:GLU:OE1	5:B:402:HOH:O	2.14	0.54
1:B:68:SER:HB2	1:B:75[B]:VAL:HG23	1.90	0.54
1:B:125:ARG:HD2	1:B:129:ARG:NH1	2.23	0.53
1:A:98[A]:GLN:HG3	5:A:384:HOH:O	2.14	0.47
1:A:77[B]:MET:CE	1:A:115[B]:ASN:OD1	2.64	0.46
1:A:77[A]:MET:HG2	1:A:79:ASP:OD1	2.16	0.46
1:B:77:MET:HG2	1:B:79:ASP:OD1	2.16	0.46
2:A:201:51G:N	1:B:111[B]:GLU:OE2	2.51	0.44
1:A:77[B]:MET:HE1	1:A:115[B]:ASN:OD1	2.18	0.43
3:A:202[A]:6IM:C11	5:A:301:HOH:O	2.65	0.43
1:B:29:PHE:HZ	3:B:301[A]:6IM:C42	2.32	0.42
1:A:114:ILE:CG2	3:A:202[A]:6IM:C48	2.97	0.42
2:A:201:51G:N2	3:A:202[B]:6IM:C47	2.83	0.42
1:B:86:ALA:O	1:B:90[B]:ARG:NH2	2.53	0.41
1:A:77[A]:MET:HE2	1:A:77[A]:MET:HB2	1.91	0.41

All (2) symmetry-related close contacts are listed below. The label for Atom-2 includes the symmetry operator and encoded unit-cell translations to be applied.

Atom-1	Atom-2	Interatomic distance (Å)	Clash overlap (Å)
5:A:402:HOH:O	5:B:512:HOH:O[1_655]	2.02	0.18
5:A:419:HOH:O	5:B:522:HOH:O[1_556]	2.10	0.10

5.3 Torsion angles [i](#)

5.3.1 Protein backbone [i](#)

In the following table, the Percentiles column shows the percent Ramachandran outliers of the chain as a percentile score with respect to all X-ray entries followed by that with respect to entries of similar resolution.

The Analysed column shows the number of residues for which the backbone conformation was analysed, and the total number of residues.

Mol	Chain	Analysed	Favoured	Allowed	Outliers	Percentiles	
1	A	157/148 (106%)	157 (100%)	0	0	100	100
1	B	153/148 (103%)	153 (100%)	0	0	100	100
All	All	310/296 (105%)	310 (100%)	0	0	100	100

There are no Ramachandran outliers to report.

5.3.2 Protein sidechains [i](#)

In the following table, the Percentiles column shows the percent sidechain outliers of the chain as a percentile score with respect to all X-ray entries followed by that with respect to entries of similar resolution.

The Analysed column shows the number of residues for which the sidechain conformation was analysed, and the total number of residues.

Mol	Chain	Analysed	Rotameric	Outliers	Percentiles	
1	A	130/123 (106%)	130 (100%)	0	100	100
1	B	126/123 (102%)	126 (100%)	0	100	100
All	All	256/246 (104%)	256 (100%)	0	100	100

There are no protein residues with a non-rotameric sidechain to report.

Sometimes sidechains can be flipped to improve hydrogen bonding and reduce clashes. All (5) such sidechains are listed below:

Mol	Chain	Res	Type
1	A	43	GLN
1	A	107	HIS
1	B	89	ASN
1	B	98	GLN
1	B	115	ASN

5.3.3 RNA [i](#)

There are no RNA molecules in this entry.

5.4 Non-standard residues in protein, DNA, RNA chains [i](#)

There are no non-standard protein/DNA/RNA residues in this entry.

5.5 Carbohydrates [i](#)

There are no oligosaccharides in this entry.

5.6 Ligand geometry [i](#)

7 ligands are modelled in this entry.

In the following table, the Counts columns list the number of bonds (or angles) for which Mogul statistics could be retrieved, the number of bonds (or angles) that are observed in the model and the number of bonds (or angles) that are defined in the Chemical Component Dictionary. The Link column lists molecule types, if any, to which the group is linked. The Z score for a bond length (or angle) is the number of standard deviations the observed value is removed from the expected value. A bond length (or angle) with $|Z| > 2$ is considered an outlier worth inspection. RMSZ is the root-mean-square of all Z scores of the bond lengths (or angles).

Mol	Type	Chain	Res	Link	Bond lengths			Bond angles		
					Counts	RMSZ	$\# Z > 2$	Counts	RMSZ	$\# Z > 2$
3	6IM	B	301[A]	-	47,53,53	2.73	11 (23%)	61,79,79	1.28	4 (6%)
3	6IM	B	301[C]	-	47,53,53	2.80	14 (29%)	61,79,79	1.37	8 (13%)
3	6IM	A	202[A]	-	47,53,53	2.93	11 (23%)	61,79,79	1.99	14 (22%)
2	51G	A	201	-	33,35,35	1.54	8 (24%)	33,52,52	1.77	10 (30%)
4	ACT	A	203	-	3,3,3	1.02	0	3,3,3	0.48	0
3	6IM	B	301[B]	-	47,53,53	2.86	14 (29%)	61,79,79	1.37	8 (13%)
3	6IM	A	202[B]	-	47,53,53	2.83	11 (23%)	61,79,79	1.39	7 (11%)

In the following table, the Chirals column lists the number of chiral outliers, the number of chiral centers analysed, the number of these observed in the model and the number defined in the Chemical Component Dictionary. Similar counts are reported in the Torsion and Rings columns. '-' means no outliers of that kind were identified.

Mol	Type	Chain	Res	Link	Chirals	Torsions	Rings
3	6IM	B	301[A]	-	-	7/47/67/67	0/3/3/3
3	6IM	B	301[C]	-	-	3/47/67/67	0/3/3/3
3	6IM	A	202[A]	-	-	5/47/67/67	0/3/3/3
2	51G	A	201	-	-	8/15/69/69	0/3/3/3
3	6IM	B	301[B]	-	-	6/47/67/67	0/3/3/3
3	6IM	A	202[B]	-	-	5/47/67/67	0/3/3/3

All (69) bond length outliers are listed below:

Mol	Chain	Res	Type	Atoms	Z	Observed(Å)	Ideal(Å)
3	B	301[B]	6IM	O16-C15	-9.11	1.28	1.40
3	A	202[A]	6IM	O16-C15	-8.84	1.29	1.40
3	B	301[C]	6IM	O16-C15	-8.79	1.29	1.40
3	B	301[B]	6IM	C13-C12	-8.64	1.30	1.52
3	A	202[A]	6IM	C13-C12	-8.61	1.30	1.52
3	B	301[A]	6IM	C13-C12	-8.59	1.30	1.52
3	B	301[C]	6IM	C13-C12	-8.58	1.30	1.52
3	B	301[A]	6IM	O16-C15	-8.41	1.29	1.40
3	B	301[A]	6IM	O16-C12	8.13	1.63	1.45
3	B	301[C]	6IM	O16-C12	8.12	1.63	1.45
3	A	202[B]	6IM	C13-C12	-8.12	1.31	1.52
3	A	202[B]	6IM	O16-C15	-8.04	1.30	1.40
3	B	301[B]	6IM	O16-C12	7.96	1.62	1.45
3	A	202[A]	6IM	O16-C12	7.74	1.62	1.45
3	A	202[B]	6IM	O16-C12	7.61	1.61	1.45
3	A	202[B]	6IM	C42-N43	5.82	1.47	1.33
3	A	202[A]	6IM	P09-O08	5.56	1.65	1.59
3	B	301[B]	6IM	C42-N43	5.35	1.46	1.33
3	A	202[A]	6IM	C38-N39	5.27	1.46	1.33
3	B	301[C]	6IM	C42-N43	5.24	1.45	1.33
3	B	301[A]	6IM	C38-N39	5.22	1.45	1.33
3	B	301[A]	6IM	C42-N43	5.19	1.45	1.33
3	A	202[A]	6IM	C42-N43	5.17	1.45	1.33
3	A	202[B]	6IM	C47-N46	5.17	1.48	1.34
3	B	301[B]	6IM	C38-N39	5.09	1.45	1.33
3	A	202[B]	6IM	P29-O28	5.07	1.68	1.59
3	B	301[C]	6IM	C38-N39	5.01	1.45	1.33

Continued on next page...

Continued from previous page...

Mol	Chain	Res	Type	Atoms	Z	Observed(Å)	Ideal(Å)
3	A	202[B]	6IM	C38-N39	4.93	1.45	1.33
3	A	202[A]	6IM	O49-C47	-4.80	1.12	1.23
3	A	202[B]	6IM	P09-O08	4.70	1.64	1.59
3	B	301[A]	6IM	C47-N46	4.56	1.46	1.34
3	B	301[C]	6IM	C47-N46	4.48	1.46	1.34
3	B	301[B]	6IM	C47-N46	4.09	1.45	1.34
3	A	202[A]	6IM	P07-O08	4.00	1.63	1.59
3	B	301[B]	6IM	P09-O08	3.94	1.63	1.59
3	B	301[B]	6IM	P07-O08	3.65	1.63	1.59
3	B	301[C]	6IM	C25-N26	3.61	1.47	1.34
3	B	301[B]	6IM	C25-N26	3.52	1.46	1.34
2	A	201	51G	C17-C16	3.48	1.55	1.52
3	A	202[A]	6IM	C47-N46	3.34	1.43	1.34
3	A	202[B]	6IM	C25-N26	3.24	1.45	1.34
3	B	301[A]	6IM	C25-N26	3.23	1.45	1.34
2	A	201	51G	C15-N	3.21	1.49	1.45
3	A	202[A]	6IM	C25-N26	3.15	1.45	1.34
3	B	301[C]	6IM	P29-O28	3.10	1.65	1.59
3	B	301[B]	6IM	P29-O28	3.09	1.64	1.59
3	A	202[A]	6IM	O27-C14	-3.07	1.35	1.43
3	B	301[C]	6IM	P07-O08	3.05	1.62	1.59
2	A	201	51G	O5-C16	-3.04	1.39	1.44
2	A	201	51G	C14-C15	3.00	1.59	1.53
3	B	301[A]	6IM	P07-O08	2.98	1.62	1.59
3	A	202[B]	6IM	O51-C38	-2.92	1.17	1.23
3	B	301[C]	6IM	P09-O08	2.83	1.62	1.59
3	A	202[B]	6IM	P07-O08	2.72	1.62	1.59
2	A	201	51G	C11-C10	2.62	1.58	1.53
3	B	301[A]	6IM	P29-O28	2.60	1.64	1.59
3	B	301[B]	6IM	O27-C14	-2.39	1.37	1.43
3	B	301[A]	6IM	P09-O08	2.39	1.62	1.59
3	B	301[C]	6IM	O49-C47	-2.32	1.18	1.23
2	A	201	51G	C6-C5	2.31	1.56	1.52
3	B	301[C]	6IM	O27-C14	-2.28	1.37	1.43
3	B	301[B]	6IM	O49-C47	-2.24	1.18	1.23
3	B	301[B]	6IM	O50-C42	-2.17	1.19	1.23
2	A	201	51G	C12-C11	2.11	1.58	1.52
3	B	301[C]	6IM	O28-C13	2.07	1.51	1.44
3	B	301[B]	6IM	O28-C13	2.06	1.51	1.44
3	B	301[C]	6IM	O50-C42	-2.04	1.19	1.23
2	A	201	51G	C1-N4	2.04	1.50	1.47
3	B	301[A]	6IM	O27-C14	-2.04	1.37	1.43

All (51) bond angle outliers are listed below:

Mol	Chain	Res	Type	Atoms	Z	Observed(°)	Ideal(°)
3	A	202[A]	6IM	C12-O16-C15	-8.03	102.57	109.92
3	A	202[A]	6IM	N22-C23-N24	-4.87	122.06	128.67
3	B	301[B]	6IM	N22-C23-N24	-4.79	122.16	128.67
3	B	301[C]	6IM	N22-C23-N24	-4.72	122.27	128.67
3	A	202[B]	6IM	N22-C23-N24	-4.61	122.41	128.67
3	B	301[A]	6IM	N22-C23-N24	-4.46	122.61	128.67
3	A	202[B]	6IM	C04-C03-C02	4.12	115.78	108.77
2	A	201	51G	C-C1-N4	4.00	117.02	110.04
2	A	201	51G	C17-O4-C13	3.91	117.56	111.53
3	B	301[C]	6IM	C40-C41-C42	3.77	118.67	112.39
3	A	202[A]	6IM	C48-C47-N46	3.76	122.54	116.12
3	A	202[A]	6IM	C04-C03-C02	3.49	114.72	108.77
3	A	202[A]	6IM	C45-C44-N43	-3.48	100.72	111.54
3	A	202[A]	6IM	O08-P07-O35	3.36	120.80	110.70
3	A	202[A]	6IM	C40-C41-C42	3.32	117.93	112.39
3	A	202[A]	6IM	O16-C15-N17	-3.30	104.37	108.75
3	A	202[A]	6IM	C45-N46-C47	-3.23	117.79	122.56
3	A	202[B]	6IM	O10-C11-C12	3.19	119.85	108.99
3	B	301[B]	6IM	C40-C41-C42	3.14	117.63	112.39
3	B	301[C]	6IM	O06-C05-C03	-3.12	105.53	110.55
2	A	201	51G	C19-N-C15	2.98	118.56	114.47
3	B	301[B]	6IM	C48-C47-N46	2.96	121.18	116.12
3	A	202[B]	6IM	C40-C41-C42	2.95	117.31	112.39
3	B	301[B]	6IM	C45-N46-C47	-2.95	118.20	122.56
2	A	201	51G	O-C2-C3	2.85	112.75	109.83
3	A	202[B]	6IM	O36-P07-O08	2.68	114.51	107.27
3	B	301[A]	6IM	C44-N43-C42	2.65	127.75	122.82
2	A	201	51G	C9-C10-C11	-2.60	103.13	109.50
2	A	201	51G	C3-C4-C5	-2.53	105.15	111.35
3	B	301[C]	6IM	O49-C47-C48	-2.52	117.56	122.05
3	A	202[A]	6IM	N26-C25-N24	2.50	123.67	118.33
3	A	202[A]	6IM	O08-P09-O34	-2.48	103.24	110.70
3	B	301[B]	6IM	O06-C05-C03	-2.48	106.56	110.55
3	B	301[C]	6IM	C13-C14-C15	2.47	105.32	99.89
3	A	202[A]	6IM	O36-P07-O08	2.47	113.94	107.27
3	B	301[B]	6IM	C13-C14-C15	2.46	105.31	99.89
3	B	301[C]	6IM	C48-C47-N46	2.42	120.25	116.12
3	A	202[B]	6IM	O28-C13-C14	-2.41	103.04	111.68
3	B	301[C]	6IM	O36-P07-O08	2.31	113.52	107.27
2	A	201	51G	C14-C15-N	-2.23	104.91	110.84
3	A	202[A]	6IM	O32-P29-O28	2.21	114.47	105.85
3	B	301[B]	6IM	C41-C42-N43	2.14	120.25	116.34

Continued on next page...

Continued from previous page...

Mol	Chain	Res	Type	Atoms	Z	Observed(°)	Ideal(°)
2	A	201	51G	C7-C12-C11	2.14	113.45	109.11
2	A	201	51G	C9-C8-C7	2.13	114.71	109.50
2	A	201	51G	O6-C14-C13	-2.12	105.03	110.08
3	A	202[A]	6IM	C20-C25-N26	-2.06	117.18	120.31
3	A	202[B]	6IM	O06-C05-C03	-2.05	107.25	110.55
3	B	301[A]	6IM	C40-C41-C42	2.03	115.78	112.39
3	B	301[B]	6IM	C04-C03-C02	2.02	112.21	108.77
3	B	301[C]	6IM	O08-P09-O34	-2.02	104.63	110.70
3	B	301[A]	6IM	C21-C20-N19	-2.01	107.21	109.34

There are no chirality outliers.

All (34) torsion outliers are listed below:

Mol	Chain	Res	Type	Atoms
2	A	201	51G	C-C1-C2-C3
2	A	201	51G	N4-C1-C2-C3
2	A	201	51G	C-C1-C2-O
2	A	201	51G	N4-C1-C2-O
2	A	201	51G	C2-C1-N4-C20
3	A	202[A]	6IM	C11-O10-P09-O08
3	B	301[A]	6IM	C45-C44-N43-C42
3	A	202[B]	6IM	N43-C44-C45-N46
3	A	202[A]	6IM	C41-C40-N39-C38
3	B	301[A]	6IM	C13-O28-P29-O31
3	B	301[C]	6IM	N43-C44-C45-N46
3	B	301[B]	6IM	P07-O08-P09-O33
3	B	301[A]	6IM	C37-C03-C05-O06
3	A	202[A]	6IM	C11-O10-P09-O34
3	A	202[B]	6IM	C05-O06-P07-O35
3	B	301[A]	6IM	O01-C02-C03-C05
3	B	301[B]	6IM	C05-O06-P07-O35
2	A	201	51G	C12-C11-O3-C13
3	A	202[B]	6IM	O10-C11-C12-O16
3	B	301[C]	6IM	P07-O08-P09-O33
2	A	201	51G	C-C1-N4-C20
2	A	201	51G	C12-C7-O1-C6
3	A	202[B]	6IM	O10-C11-C12-C13
3	A	202[A]	6IM	C13-O28-P29-O31
3	B	301[A]	6IM	O01-C02-C03-C04
3	B	301[A]	6IM	P07-O08-P09-O33
3	B	301[B]	6IM	P07-O08-P09-O34
3	B	301[C]	6IM	P07-O08-P09-O34

Continued on next page...

Continued from previous page...

Mol	Chain	Res	Type	Atoms
3	A	202[A]	6IM	C13-O28-P29-O30
3	B	301[B]	6IM	C40-C41-C42-O50
3	A	202[B]	6IM	C41-C40-N39-C38
3	B	301[A]	6IM	C04-C03-C05-O06
3	B	301[B]	6IM	C40-C41-C42-N43
3	B	301[B]	6IM	C12-C11-O10-P09

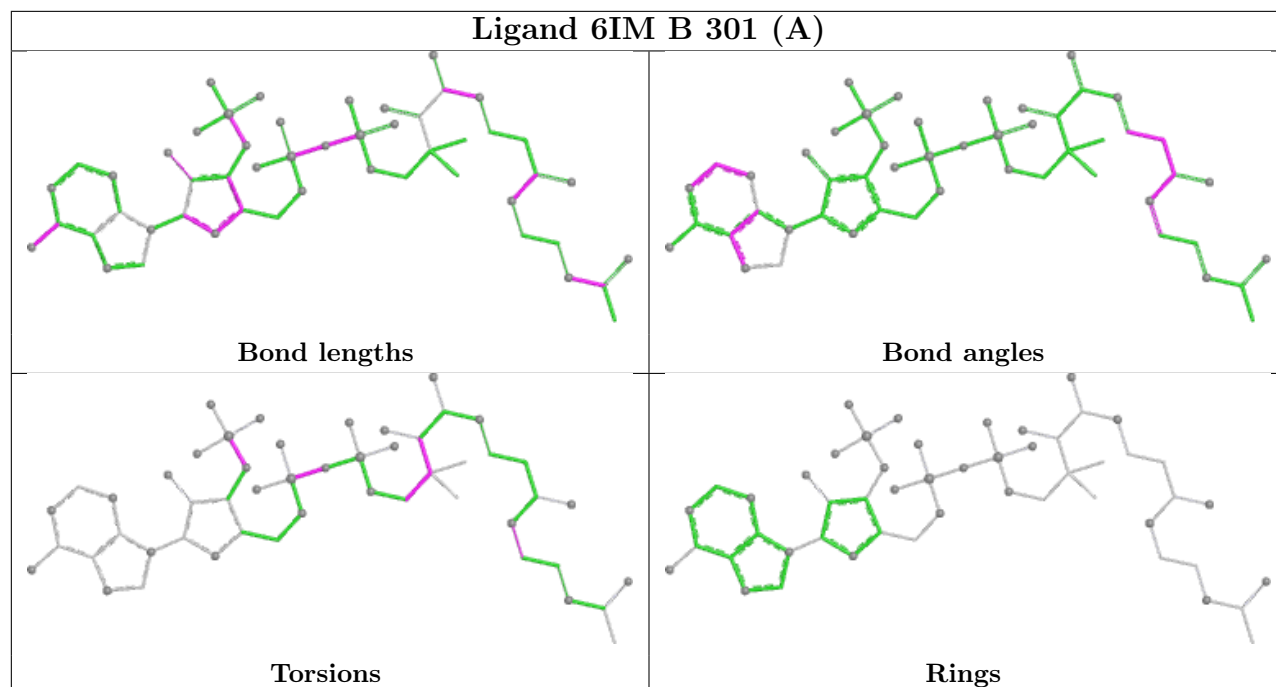
There are no ring outliers.

5 monomers are involved in 8 short contacts:

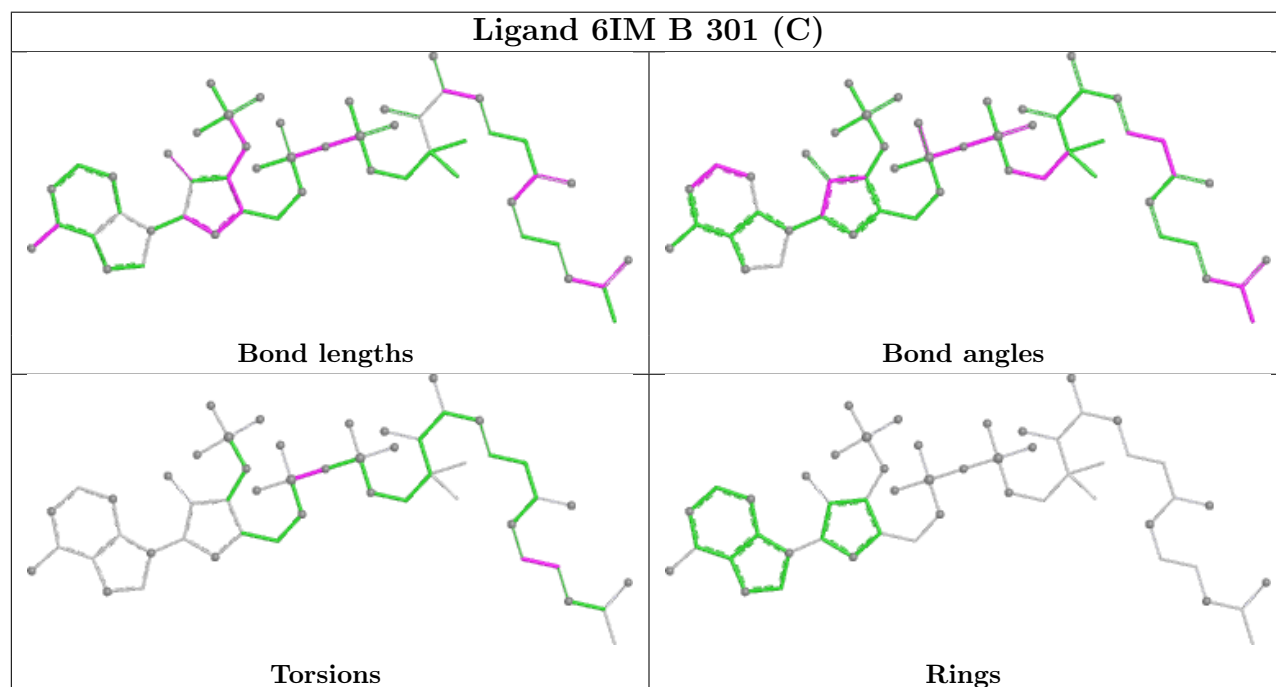
Mol	Chain	Res	Type	Clashes	Symm-Clashes
3	B	301[A]	6IM	1	0
3	A	202[A]	6IM	4	0
2	A	201	51G	2	0
3	B	301[B]	6IM	1	0
3	A	202[B]	6IM	1	0

The following is a two-dimensional graphical depiction of Mogul quality analysis of bond lengths, bond angles, torsion angles, and ring geometry for all instances of the Ligand of Interest. In addition, ligands with molecular weight > 250 and outliers as shown on the validation Tables will also be included. For torsion angles, if less than 5% of the Mogul distribution of torsion angles is within 10 degrees of the torsion angle in question, then that torsion angle is considered an outlier. Any bond that is central to one or more torsion angles identified as an outlier by Mogul will be highlighted in the graph. For rings, the root-mean-square deviation (RMSD) between the ring in question and similar rings identified by Mogul is calculated over all ring torsion angles. If the average RMSD is greater than 60 degrees and the minimal RMSD between the ring in question and any Mogul-identified rings is also greater than 60 degrees, then that ring is considered an outlier. The outliers are highlighted in purple. The color gray indicates Mogul did not find sufficient equivalents in the CSD to analyse the geometry.

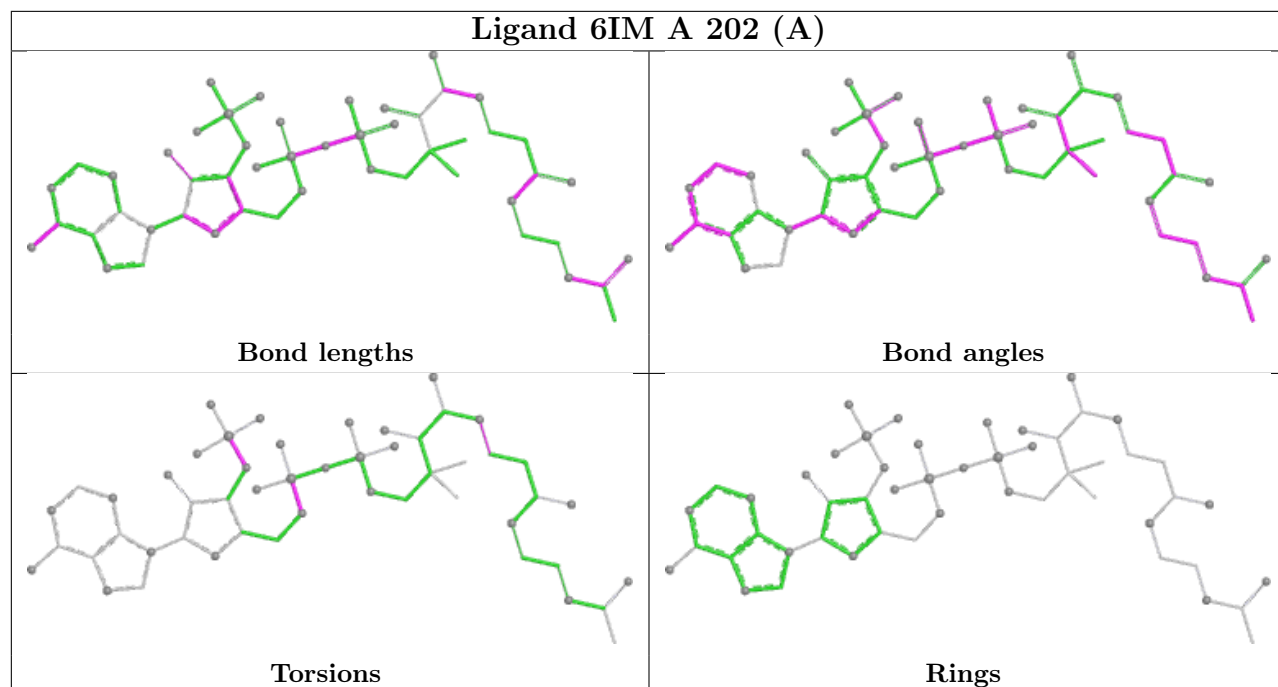
Ligand 6IM B 301 (A)



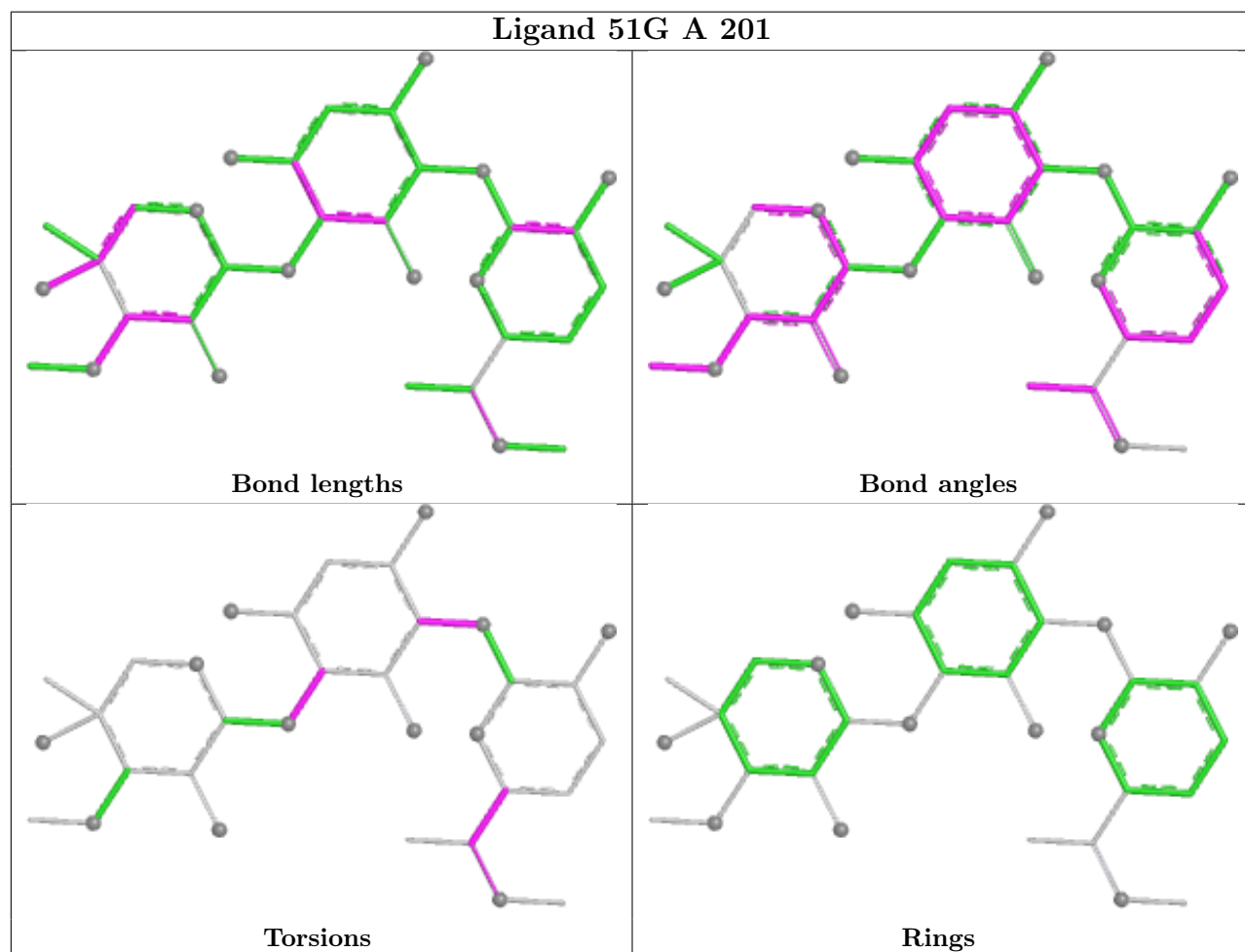
Ligand 6IM B 301 (C)

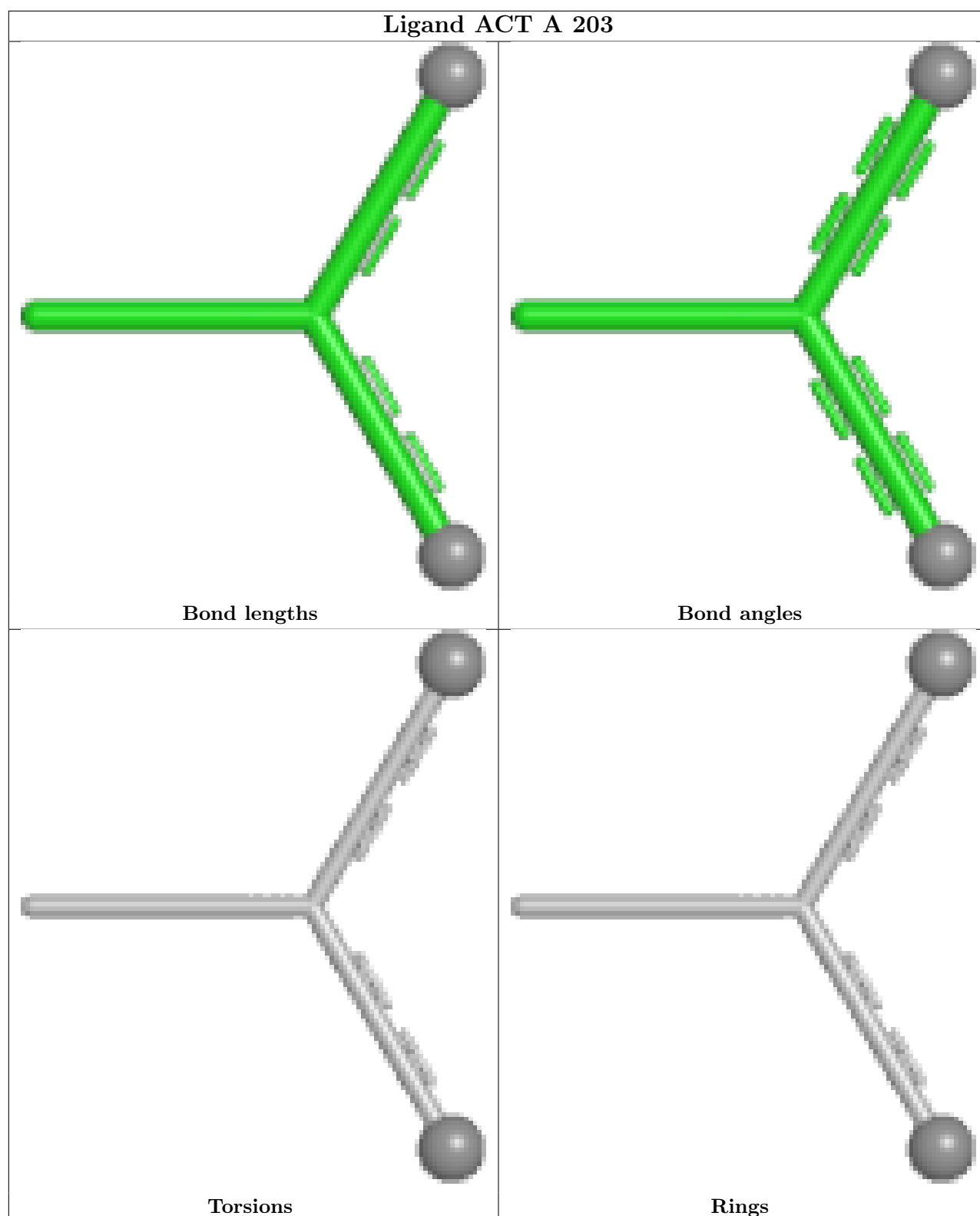


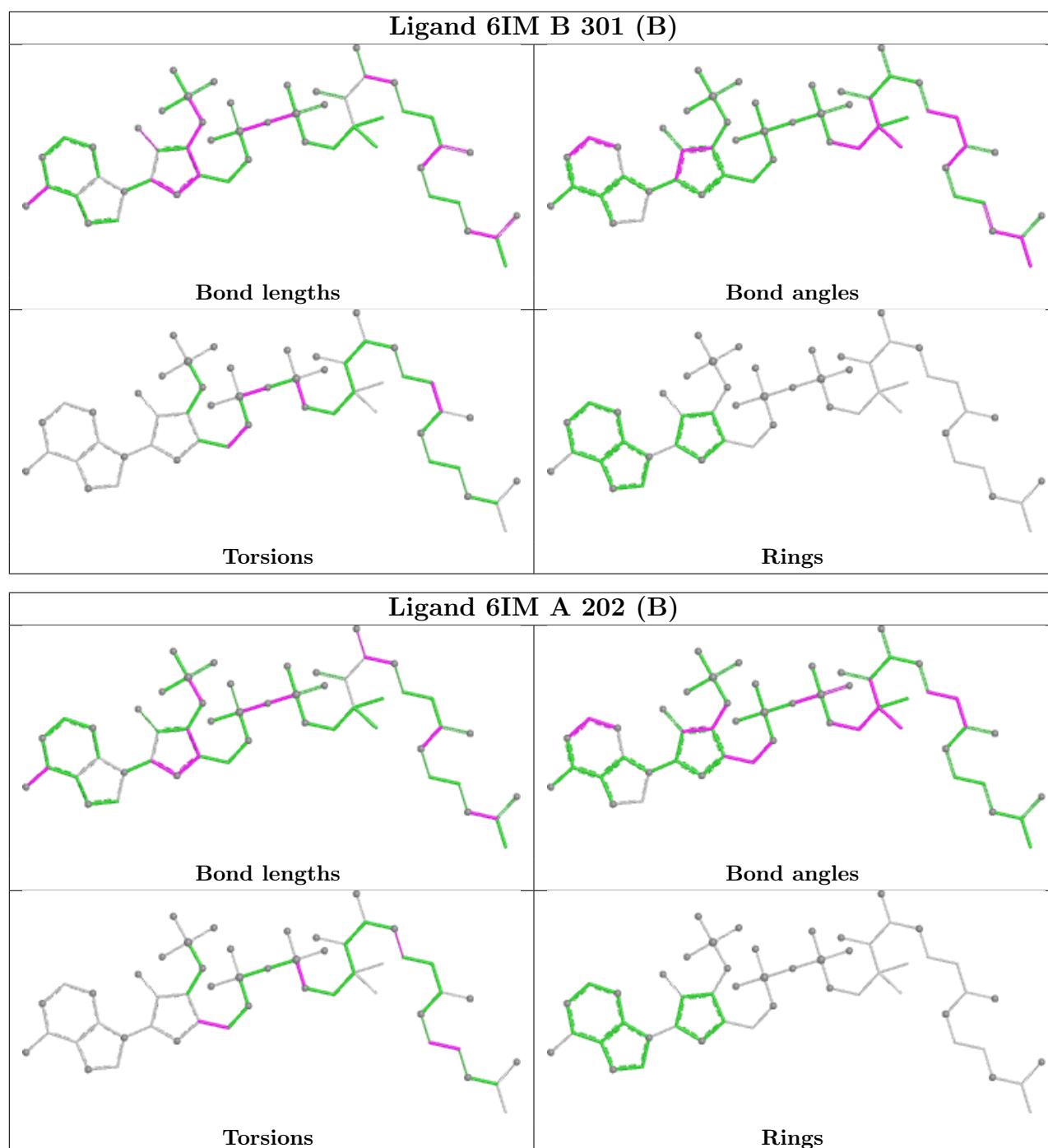
Ligand 6IM A 202 (A)



Ligand 51G A 201







5.7 Other polymers [i](#)

There are no such residues in this entry.

5.8 Polymer linkage issues [i](#)

There are no chain breaks in this entry.

6 Fit of model and data [i](#)

6.1 Protein, DNA and RNA chains [i](#)

In the following table, the column labelled ‘#RSRZ> 2’ contains the number (and percentage) of RSRZ outliers, followed by percent RSRZ outliers for the chain as percentile scores relative to all X-ray entries and entries of similar resolution. The OWAB column contains the minimum, median, 95th percentile and maximum values of the occupancy-weighted average B-factor per residue. The column labelled ‘Q< 0.9’ lists the number of (and percentage) of residues with an average occupancy less than 0.9.

Mol	Chain	Analysed	<RSRZ>	#RSRZ>2	OWAB(Å ²)	Q<0.9
1	A	143/148 (96%)	-0.01	2 (1%) 73 78	8, 19, 40, 48	12 (8%)
1	B	143/148 (96%)	0.05	3 (2%) 63 68	6, 22, 37, 59	9 (6%)
All	All	286/296 (96%)	0.02	5 (1%) 69 74	6, 21, 40, 59	21 (7%)

All (5) RSRZ outliers are listed below:

Mol	Chain	Res	Type	RSRZ
1	B	29	PHE	3.3
1	B	33	VAL	2.7
1	A	6	GLU	2.3
1	B	31	THR	2.2
1	A	29	PHE	2.1

6.2 Non-standard residues in protein, DNA, RNA chains [i](#)

There are no non-standard protein/DNA/RNA residues in this entry.

6.3 Carbohydrates [i](#)

There are no oligosaccharides in this entry.

6.4 Ligands [i](#)

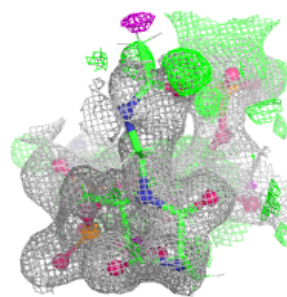
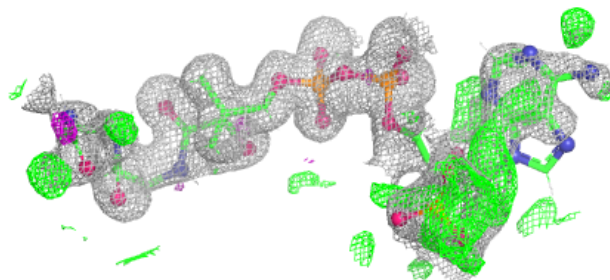
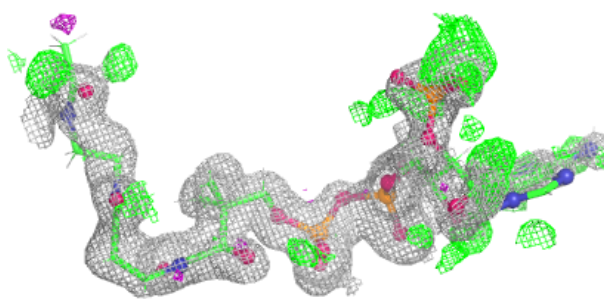
In the following table, the Atoms column lists the number of modelled atoms in the group and the number defined in the chemical component dictionary. The B-factors column lists the minimum, median, 95th percentile and maximum values of B factors of atoms in the group. The column labelled ‘Q< 0.9’ lists the number of atoms with occupancy less than 0.9.

Mol	Type	Chain	Res	Atoms	RSCC	RSR	B-factors(\AA^2)	Q<0.9
3	6IM	A	202[A]	51/51	0.83	0.19	12,28,42,51	86
3	6IM	A	202[B]	51/51	0.83	0.19	13,25,34,41	86
4	ACT	A	203	4/4	0.84	0.18	36,50,60,60	0
2	51G	A	201	33/33	0.90	0.11	14,21,49,67	76
3	6IM	B	301[B]	51/51	0.92	0.13	14,27,42,52	86
3	6IM	B	301[C]	51/51	0.92	0.13	13,27,42,53	86
3	6IM	B	301[A]	51/51	0.92	0.13	15,29,48,54	86

The following is a graphical depiction of the model fit to experimental electron density of all instances of the Ligand of Interest. In addition, ligands with molecular weight > 250 and outliers as shown on the geometry validation Tables will also be included. Each fit is shown from different orientation to approximate a three-dimensional view.

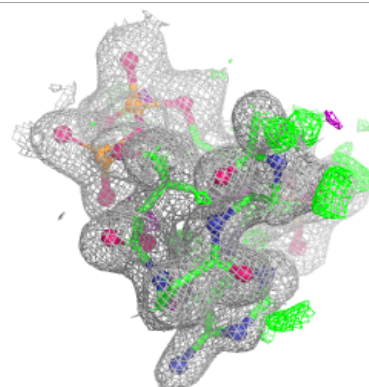
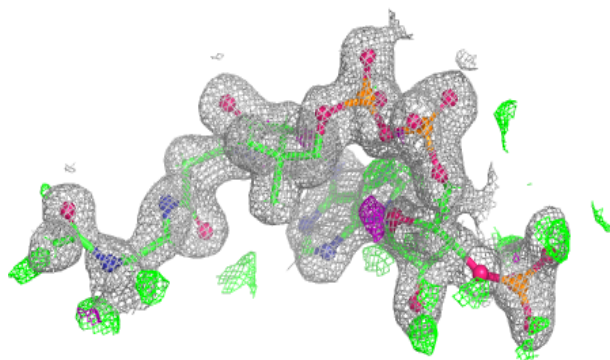
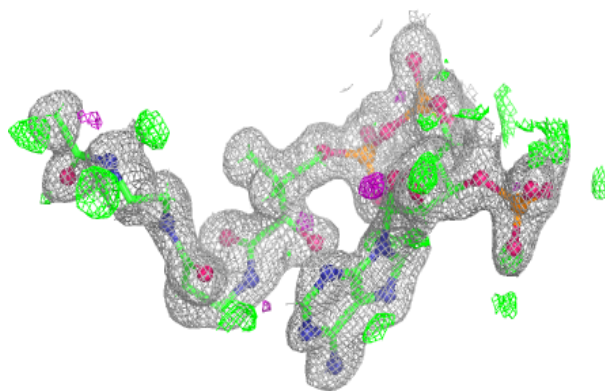
Electron density around 6IM A 202 (A):

2mF_o-DF_c (at 0.7 rmsd) in gray
mF_o-DF_c (at 3 rmsd) in purple (negative)
and green (positive)

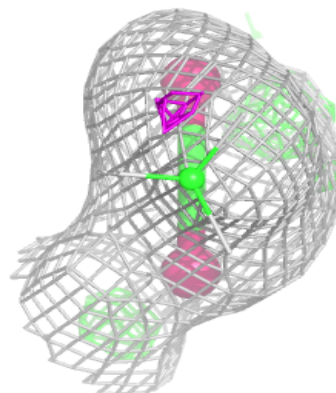
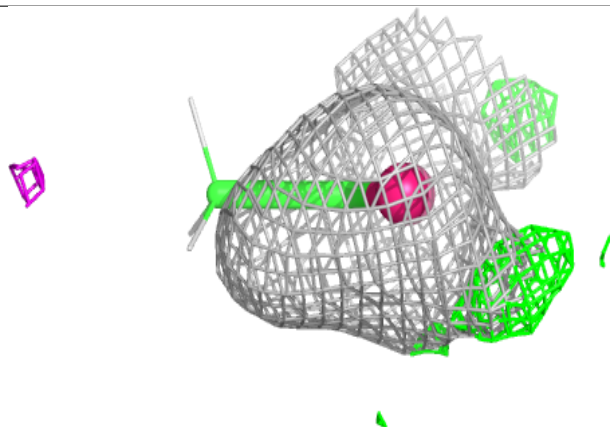
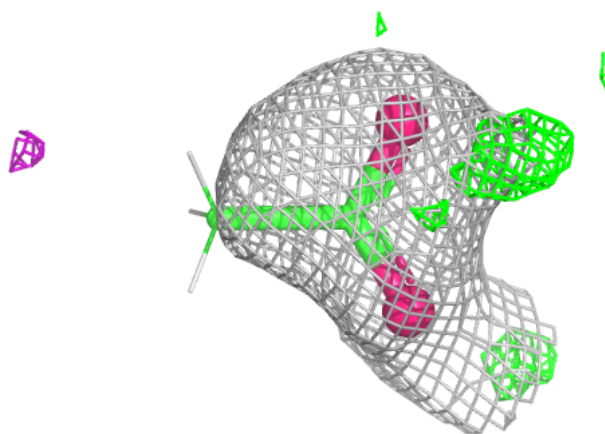


Electron density around 6IM A 202 (B):

$2mF_o-DF_c$ (at 0.7 rmsd) in gray
 mF_o-DF_c (at 3 rmsd) in purple (negative)
and green (positive)

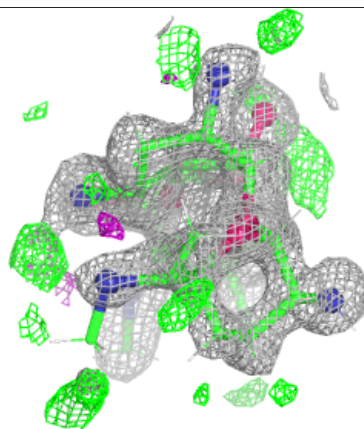
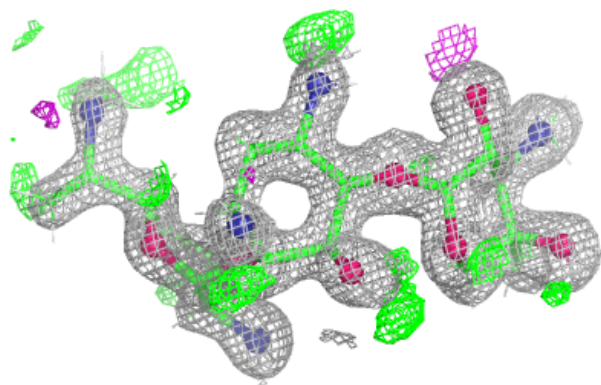
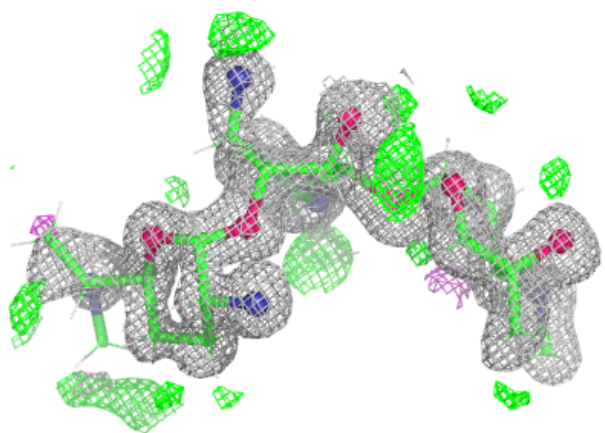
**Electron density around ACT A 203:**

$2mF_o-DF_c$ (at 0.7 rmsd) in gray
 mF_o-DF_c (at 3 rmsd) in purple (negative)
and green (positive)

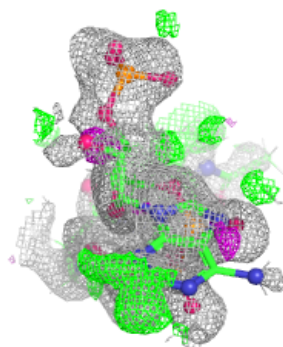
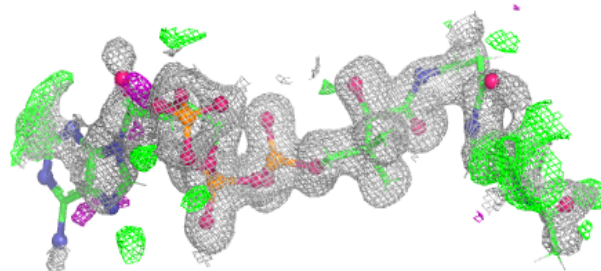
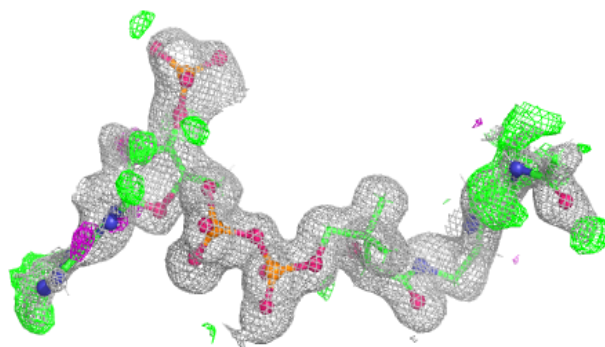


Electron density around 51G A 201:

$2mF_o-DF_c$ (at 0.7 rmsd) in gray
 mF_o-DF_c (at 3 rmsd) in purple (negative)
and green (positive)

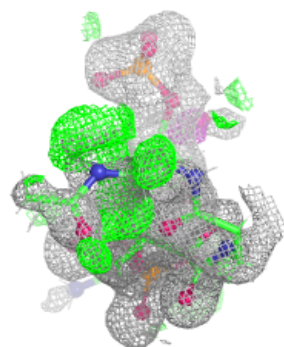
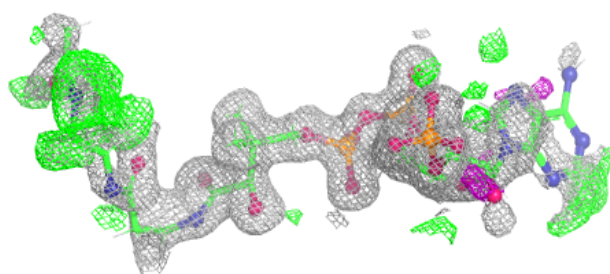
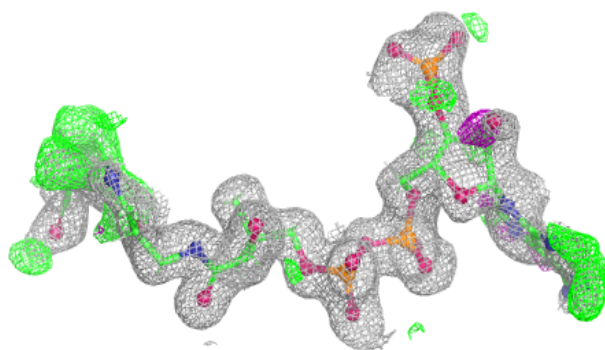
**Electron density around 6IM B 301 (B):**

$2mF_o-DF_c$ (at 0.7 rmsd) in gray
 mF_o-DF_c (at 3 rmsd) in purple (negative)
and green (positive)

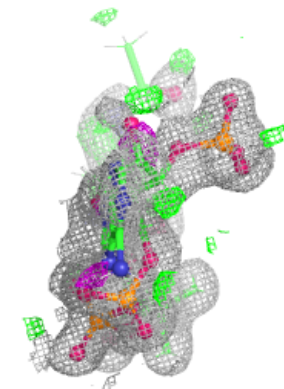
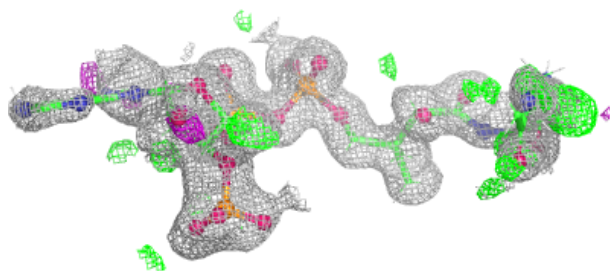
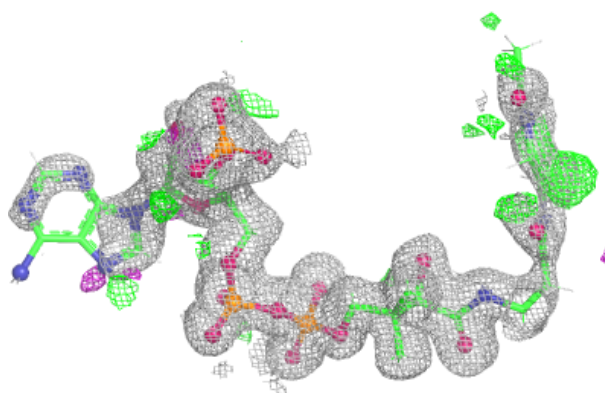


Electron density around 6IM B 301 (C):

$2mF_o-DF_c$ (at 0.7 rmsd) in gray
 mF_o-DF_c (at 3 rmsd) in purple (negative)
and green (positive)

**Electron density around 6IM B 301 (A):**

$2mF_o-DF_c$ (at 0.7 rmsd) in gray
 mF_o-DF_c (at 3 rmsd) in purple (negative)
and green (positive)



6.5 Other polymers [i](#)

There are no such residues in this entry.