



wwPDB X-ray Structure Validation Summary Report ⓘ

Jun 22, 2024 – 03:36 PM EDT

PDB ID : 5LVX
Title : Crystal structure of glucocerebrosidase with an inhibitory quinazoline modulator
Authors : Zheng, J.; Chen, L.; Skinner, O.S.; Lansbury, P.; Skerlj, R.; Mrosek, M.; Heunisch, U.; Krapp, S.; Weigand, S.; Charrow, J.; Schwake, M.; Kelleher, N.L.; Silverman, R.B.; Krainc, D.
Deposited on : 2016-09-14
Resolution : 2.20 Å(reported)

This is a wwPDB X-ray Structure Validation Summary Report for a publicly released PDB entry.

We welcome your comments at validation@mail.wwpdb.org

A user guide is available at

<https://www.wwpdb.org/validation/2017/XrayValidationReportHelp>

with specific help available everywhere you see the ⓘ symbol.

The types of validation reports are described at

<http://www.wwpdb.org/validation/2017/FAQs#types>.

The following versions of software and data (see [references](#) ①) were used in the production of this report:

MolProbity	:	4.02b-467
Mogul	:	1.8.5 (274361), CSD as541be (2020)
Xtriage (Phenix)	:	1.13
EDS	:	2.37.1
buster-report	:	1.1.7 (2018)
Percentile statistics	:	20191225.v01 (using entries in the PDB archive December 25th 2019)
Refmac	:	5.8.0158
CCP4	:	7.0.044 (Gargrove)
Ideal geometry (proteins)	:	Engh & Huber (2001)
Ideal geometry (DNA, RNA)	:	Parkinson et al. (1996)
Validation Pipeline (wwPDB-VP)	:	2.37.1

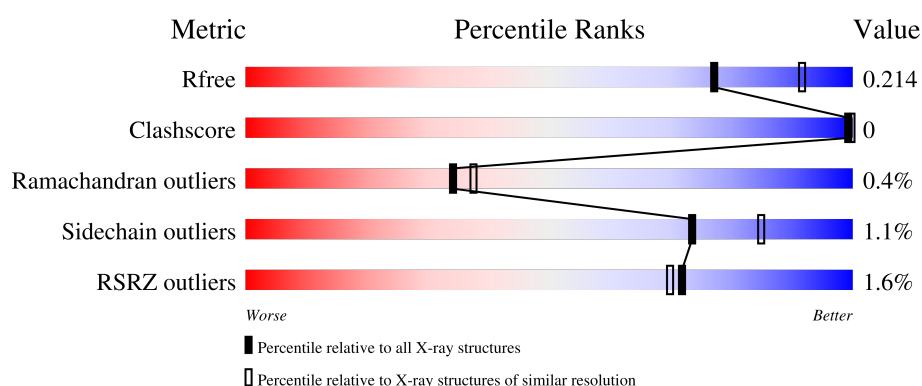
1 Overall quality at a glance

The following experimental techniques were used to determine the structure:

X-RAY DIFFRACTION

The reported resolution of this entry is 2.20 Å.

Percentile scores (ranging between 0-100) for global validation metrics of the entry are shown in the following graphic. The table shows the number of entries on which the scores are based.




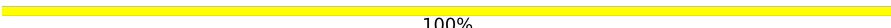
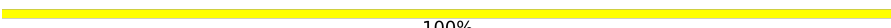
Metric	Whole archive (#Entries)	Similar resolution (#Entries, resolution range(Å))
R_{free}	130704	4898 (2.20-2.20)
Clashscore	141614	5594 (2.20-2.20)
Ramachandran outliers	138981	5503 (2.20-2.20)
Sidechain outliers	138945	5504 (2.20-2.20)
RSRZ outliers	127900	4800 (2.20-2.20)

The table below summarises the geometric issues observed across the polymeric chains and their fit to the electron density. The red, orange, yellow and green segments of the lower bar indicate the fraction of residues that contain outliers for ≥ 3 , 2, 1 and 0 types of geometric quality criteria respectively. A grey segment represents the fraction of residues that are not modelled. The numeric value for each fraction is indicated below the corresponding segment, with a dot representing fractions $\leq 5\%$. The upper red bar (where present) indicates the fraction of residues that have poor fit to the electron density. The numeric value is given above the bar.

Mol	Chain	Length	Quality of chain
1	A	497	<div> <div></div> <div>98%</div> <div>.</div> </div>
1	B	497	<div> <div></div> <div>98%</div> <div>.</div> </div>
1	C	497	<div> <div></div> <div>99%</div> <div>.</div> </div>
1	D	497	<div> <div></div> <div>98%</div> <div>.</div> </div>
2	E	6	<div> <div>17%</div> <div>83%</div> </div>

Continued on next page...

Continued from previous page...

Mol	Chain	Length	Quality of chain
2	H	6	 17% 83%
3	F	2	 100%
4	G	5	 100%

2 Entry composition [i](#)

There are 9 unique types of molecules in this entry. The entry contains 16966 atoms, of which 0 are hydrogens and 0 are deuteriums.

In the tables below, the ZeroOcc column contains the number of atoms modelled with zero occupancy, the AltConf column contains the number of residues with at least one atom in alternate conformation and the Trace column contains the number of residues modelled with at most 2 atoms.

- Molecule 1 is a protein called Glucosylceramidase.

Mol	Chain	Residues	Atoms					ZeroOcc	AltConf	Trace
1	A	497	Total	C	N	O	S	39	2	0
			3951	2546	675	714	16			
1	B	497	Total	C	N	O	S	47	2	0
			3952	2548	675	713	16			
1	C	496	Total	C	N	O	S	50	0	0
			3921	2527	670	708	16			
1	D	497	Total	C	N	O	S	50	1	0
			3939	2538	673	712	16			

- Molecule 2 is an oligosaccharide called alpha-D-mannopyranose-(1-2)-alpha-D-mannopyranose-(1-2)-alpha-D-mannopyranose-(1-3)-beta-D-mannopyranose-(1-4)-2-acetamido-2-deoxy-beta-D-glucopyranose-(1-4)-2-acetamido-2-deoxy-beta-D-glucopyranose.



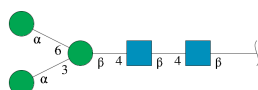
Mol	Chain	Residues	Atoms				ZeroOcc	AltConf	Trace
2	E	6	Total	C	N	O	0	0	0
			72	40	2	30			
2	H	6	Total	C	N	O	8	0	0
			72	40	2	30			

- Molecule 3 is an oligosaccharide called 2-acetamido-2-deoxy-beta-D-glucopyranose-(1-4)-2-acetamido-2-deoxy-beta-D-glucopyranose.



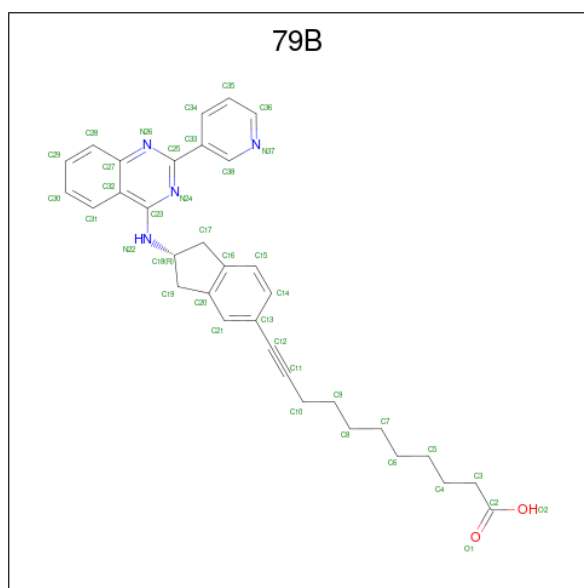
Mol	Chain	Residues	Atoms				ZeroOcc	AltConf	Trace
3	F	2	Total	C	N	O	0	0	0
			28	16	2	10			

- Molecule 4 is an oligosaccharide called alpha-D-mannopyranose-(1-3)-[alpha-D-mannopyranose-(1-6)]beta-D-mannopyranose-(1-4)-2-acetamido-2-deoxy-beta-D-glucopyranose-(1-4)-2-acetamido-2-deoxy-beta-D-glucopyranose.



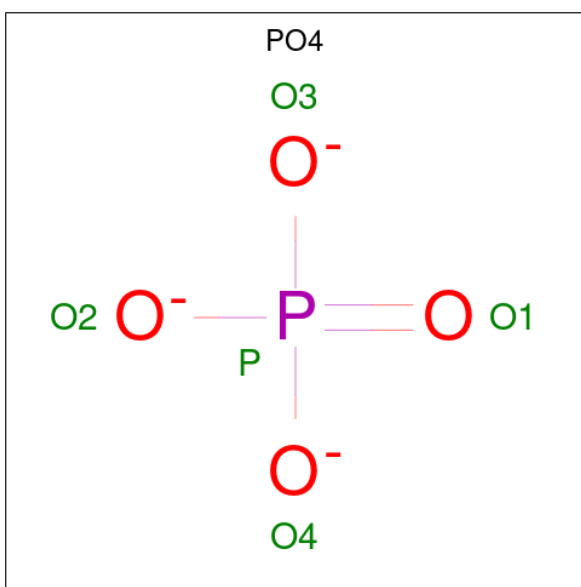
Mol	Chain	Residues	Atoms				ZeroOcc	AltConf	Trace
4	G	5	Total	C	N	O	0	0	0
			61	34	2	25			

- Molecule 5 is 11-[(2 {R})-2-[(2-pyridin-3-ylquinazolin-4-yl)amino]-2,3-dihydro-1 {H}-inden-5-yl]undec-10-ynoic acid (three-letter code: 79B) (formula: C₃₃H₃₄N₄O₂).



Mol	Chain	Residues	Atoms				ZeroOcc	AltConf
5	A	1	Total	C	N	O	0	0
			38	33	4	1		
5	D	1	Total	C	N	O	0	0
			38	33	4	1		

- Molecule 6 is PHOSPHATE ION (three-letter code: PO4) (formula: O₄P).



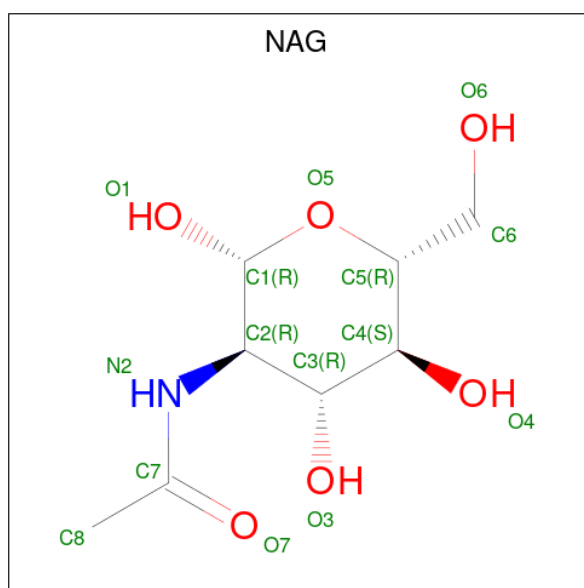
Mol	Chain	Residues	Atoms			ZeroOcc	AltConf
6	A	1	Total	O	P	0	0
			5	4	1		
6	A	1	Total	O	P	0	0
			5	4	1		
6	A	1	Total	O	P	0	0
			5	4	1		
6	A	1	Total	O	P	0	0
			5	4	1		
6	A	1	Total	O	P	0	0
			5	4	1		
6	B	1	Total	O	P	0	0
			5	4	1		
6	B	1	Total	O	P	0	0
			5	4	1		
6	B	1	Total	O	P	0	0
			5	4	1		
6	B	1	Total	O	P	0	0
			5	4	1		
6	C	1	Total	O	P	0	0
			5	4	1		
6	C	1	Total	O	P	0	0
			5	4	1		
6	C	1	Total	O	P	0	0
			5	4	1		

Continued on next page...

Continued from previous page...

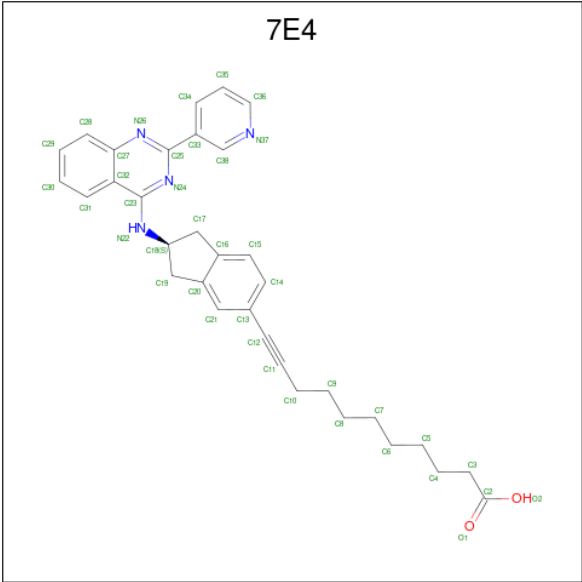
Mol	Chain	Residues	Atoms			ZeroOcc	AltConf
6	C	1	Total	O	P	0	0
			5	4	1		
6	C	1	Total	O	P	0	0
			5	4	1		
6	D	1	Total	O	P	0	0
			5	4	1		
6	D	1	Total	O	P	0	0
			5	4	1		
6	D	1	Total	O	P	0	0
			5	4	1		
6	D	1	Total	O	P	0	0
			5	4	1		

- Molecule 7 is 2-acetamido-2-deoxy-beta-D-glucopyranose (three-letter code: NAG) (formula: $C_8H_{15}NO_6$).



Mol	Chain	Residues	Atoms				ZeroOcc	AltConf
7	B	1	Total	C	N	O	0	0
			14	8	1	5		
7	D	1	Total	C	N	O	0	0
			14	8	1	5		

- Molecule 8 is 11-[(2 {S})-2-[(2-pyridin-3-ylquinazolin-4-yl)amino]-2,3-dihydro-1 {H}-inden-5-yl]undec-10-ynoic acid (three-letter code: 7E4) (formula: $C_{33}H_{34}N_4O_2$).



Mol	Chain	Residues	Atoms				ZeroOcc	AltConf
8	B	1	Total	C	N	O	0	0
			38	33	4	1		
8	C	1	Total	C	N	O	0	0
			38	33	4	1		

- Molecule 9 is water.

Mol	Chain	Residues	Atoms		ZeroOcc	AltConf
9	A	187	Total	O	0	1
			188	188		
9	B	206	Total	O	0	2
			208	208		
9	C	175	Total	O	0	0
			175	175		
9	D	113	Total	O	0	1
			114	114		

3 Residue-property plots [i](#)

These plots are drawn for all protein, RNA, DNA and oligosaccharide chains in the entry. The first graphic for a chain summarises the proportions of the various outlier classes displayed in the second graphic. The second graphic shows the sequence view annotated by issues in geometry and electron density. Residues are color-coded according to the number of geometric quality criteria for which they contain at least one outlier: green = 0, yellow = 1, orange = 2 and red = 3 or more. A red dot above a residue indicates a poor fit to the electron density ($RSRZ > 2$). Stretches of 2 or more consecutive residues without any outlier are shown as a green connector. Residues present in the sample, but not in the model, are shown in grey.

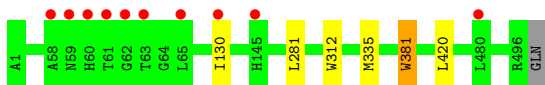
- Molecule 1: Glucosylceramidase



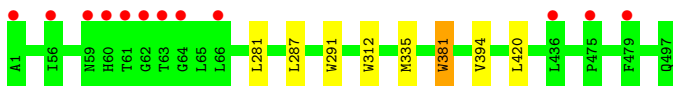
- Molecule 1: Glucosylceramidase



- Molecule 1: Glucosylceramidase



- Molecule 1: Glucosylceramidase



- Molecule 2: alpha-D-mannopyranose-(1-2)-alpha-D-mannopyranose-(1-2)-alpha-D-mannopyranose-(1-3)-beta-D-mannopyranose-(1-4)-2-acetamido-2-deoxy-beta-D-glucopyranose-(1-4)-2-acetamido-2-deoxy-beta-D-glucopyranose



- Molecule 2: α -D-mannopyranose-(1-2)- α -D-mannopyranose-(1-2)- α -D-mannopyranose-(1-3)- β -D-mannopyranose-(1-4)-2-acetamido-2-deoxy- β -D-glucopyranose-(1-4)-2-acetamido-2-deoxy- β -D-glucopyranose

Chain H:  17% 83%

NAG1
NAG2
BMA3
MAN4
MAN5
MAN6

- Molecule 3: 2-acetamido-2-deoxy- β -D-glucopyranose-(1-4)-2-acetamido-2-deoxy- β -D-glucopyranose

Chain F:  100%

NAG1
NAG2

- Molecule 4: α -D-mannopyranose-(1-3)-[α -D-mannopyranose-(1-6)] β -D-mannopyranose-(1-4)-2-acetamido-2-deoxy- β -D-glucopyranose-(1-4)-2-acetamido-2-deoxy- β -D-glucopyranose

Chain G:  100%

NAG1
NAG2
BMA3
MAN4
MAN5

4 Data and refinement statistics

Property	Value	Source
Space group	P 1 21 1	Depositor
Cell constants a, b, c, α , β , γ	94.91Å 132.28Å 103.08Å 90.00° 95.26° 90.00°	Depositor
Resolution (Å)	102.65 – 2.20 49.00 – 2.20	Depositor EDS
% Data completeness (in resolution range)	97.6 (102.65-2.20) 97.6 (49.00-2.20)	Depositor EDS
R_{merge}	0.06	Depositor
R_{sym}	(Not available)	Depositor
$\langle I/\sigma(I) \rangle$ ¹	1.97 (at 2.20Å)	Xtriage
Refinement program	REFMAC 5.8.0049	Depositor
R, R_{free}	0.189 , 0.210 0.195 , 0.214	Depositor DCC
R_{free} test set	1529 reflections (1.22%)	wwPDB-VP
Wilson B-factor (Å ²)	36.3	Xtriage
Anisotropy	0.324	Xtriage
Bulk solvent k_{sol} (e/Å ³), B_{sol} (Å ²)	0.32 , 41.7	EDS
L-test for twinning ²	$\langle L \rangle = 0.48$, $\langle L^2 \rangle = 0.31$	Xtriage
Estimated twinning fraction	No twinning to report.	Xtriage
F_o, F_c correlation	0.95	EDS
Total number of atoms	16966	wwPDB-VP
Average B, all atoms (Å ²)	40.0	wwPDB-VP

Xtriage's analysis on translational NCS is as follows: *The largest off-origin peak in the Patterson function is 2.97% of the height of the origin peak. No significant pseudotranslation is detected.*

¹Intensities estimated from amplitudes.

²Theoretical values of $\langle |L| \rangle$, $\langle L^2 \rangle$ for acentric reflections are 0.5, 0.333 respectively for untwinned datasets, and 0.375, 0.2 for perfectly twinned datasets.

5 Model quality [i](#)

5.1 Standard geometry [i](#)

Bond lengths and bond angles in the following residue types are not validated in this section: 7E4, MAN, NAG, PO4, BMA, 79B

The Z score for a bond length (or angle) is the number of standard deviations the observed value is removed from the expected value. A bond length (or angle) with $|Z| > 5$ is considered an outlier worth inspection. RMSZ is the root-mean-square of all Z scores of the bond lengths (or angles).

Mol	Chain	Bond lengths		Bond angles	
		RMSZ	# Z >5	RMSZ	# Z >5
1	A	0.45	0/4072	0.66	1/5550 (0.0%)
1	B	0.45	0/4074	0.63	0/5555
1	C	0.44	0/4041	0.64	0/5510
1	D	0.42	0/4059	0.65	0/5533
All	All	0.44	0/16246	0.64	1/22148 (0.0%)

There are no bond length outliers.

All (1) bond angle outliers are listed below:

Mol	Chain	Res	Type	Atoms	Z	Observed(°)	Ideal(°)
1	A	39	ARG	NE-CZ-NH1	5.12	122.86	120.30

There are no chirality outliers.

There are no planarity outliers.

5.2 Too-close contacts [i](#)

In the following table, the Non-H and H(model) columns list the number of non-hydrogen atoms and hydrogen atoms in the chain respectively. The H(added) column lists the number of hydrogen atoms added and optimized by MolProbity. The Clashes column lists the number of clashes within the asymmetric unit, whereas Symm-Clashes lists symmetry-related clashes.

Mol	Chain	Non-H	H(model)	H(added)	Clashes	Symm-Clashes
1	A	3951	0	3861	0	0
1	B	3952	0	3863	4	0
1	C	3921	0	3838	1	0
1	D	3939	0	3855	2	0
2	E	72	0	61	0	0
2	H	72	0	61	0	0

Continued on next page...

Continued from previous page...

Mol	Chain	Non-H	H(model)	H(added)	Clashes	Symm-Clashes
3	F	28	0	25	0	0
4	G	61	0	52	0	0
5	A	38	0	0	0	0
5	D	38	0	0	0	0
6	A	30	0	0	0	0
6	B	25	0	0	0	0
6	C	25	0	0	0	0
6	D	25	0	0	0	0
7	B	14	0	13	0	0
7	D	14	0	13	0	0
8	B	38	0	0	0	0
8	C	38	0	0	0	0
9	A	188	0	0	0	0
9	B	208	0	0	0	0
9	C	175	0	0	0	0
9	D	114	0	0	0	0
All	All	16966	0	15642	6	0

The all-atom clashscore is defined as the number of clashes found per 1000 atoms (including hydrogen atoms). The all-atom clashscore for this structure is 0.

The worst 5 of 6 close contacts within the same asymmetric unit are listed below, sorted by their clash magnitude.

Atom-1	Atom-2	Interatomic distance (Å)	Clash overlap (Å)
1:B:130:ILE:HD13	1:C:130:ILE:HD13	1.79	0.64
1:B:394[A]:VAL:O	1:B:394[A]:VAL:HG22	2.09	0.53
1:B:394[B]:VAL:HG12	1:B:394[B]:VAL:O	2.09	0.52
1:D:287:LEU:HB3	1:D:291:TRP:CD1	2.55	0.41
1:D:394:VAL:HG12	1:D:394:VAL:O	2.21	0.41

There are no symmetry-related clashes.

5.3 Torsion angles [i](#)

5.3.1 Protein backbone [i](#)

In the following table, the Percentiles column shows the percent Ramachandran outliers of the chain as a percentile score with respect to all X-ray entries followed by that with respect to entries of similar resolution.

The Analysed column shows the number of residues for which the backbone conformation was analysed, and the total number of residues.

Mol	Chain	Analysed	Favoured	Allowed	Outliers	Percentiles	
1	A	497/497 (100%)	486 (98%)	9 (2%)	2 (0%)	34	37
1	B	497/497 (100%)	485 (98%)	10 (2%)	2 (0%)	34	37
1	C	494/497 (99%)	482 (98%)	10 (2%)	2 (0%)	34	37
1	D	496/497 (100%)	485 (98%)	9 (2%)	2 (0%)	34	37
All	All	1984/1988 (100%)	1938 (98%)	38 (2%)	8 (0%)	34	37

5 of 8 Ramachandran outliers are listed below:

Mol	Chain	Res	Type
1	A	281	LEU
1	B	281	LEU
1	B	381	TRP
1	C	281	LEU
1	C	381	TRP

5.3.2 Protein sidechains ⓘ

In the following table, the Percentiles column shows the percent sidechain outliers of the chain as a percentile score with respect to all X-ray entries followed by that with respect to entries of similar resolution.

The Analysed column shows the number of residues for which the sidechain conformation was analysed, and the total number of residues.

Mol	Chain	Analysed	Rotameric	Outliers	Percentiles	
1	A	426/424 (100%)	419 (98%)	7 (2%)	62	76
1	B	426/424 (100%)	422 (99%)	4 (1%)	78	88
1	C	423/424 (100%)	419 (99%)	4 (1%)	78	88
1	D	425/424 (100%)	421 (99%)	4 (1%)	78	88
All	All	1700/1696 (100%)	1681 (99%)	19 (1%)	73	85

5 of 19 residues with a non-rotameric sidechain are listed below:

Mol	Chain	Res	Type
1	C	420	LEU
1	D	381	TRP
1	D	420	LEU

Continued on next page...

Continued from previous page...

Mol	Chain	Res	Type
1	D	335	MET
1	B	335	MET

Sometimes sidechains can be flipped to improve hydrogen bonding and reduce clashes. All (2) such sidechains are listed below:

Mol	Chain	Res	Type
1	B	440	GLN
1	C	146	ASN

5.3.3 RNA ⓘ

There are no RNA molecules in this entry.

5.4 Non-standard residues in protein, DNA, RNA chains ⓘ

12 non-standard protein/DNA/RNA residues are modelled in this entry.

In the following table, the Counts columns list the number of bonds (or angles) for which Mogul statistics could be retrieved, the number of bonds (or angles) that are observed in the model and the number of bonds (or angles) that are defined in the Chemical Component Dictionary. The Link column lists molecule types, if any, to which the group is linked. The Z score for a bond length (or angle) is the number of standard deviations the observed value is removed from the expected value. A bond length (or angle) with $|Z| > 2$ is considered an outlier worth inspection. RMSZ is the root-mean-square of all Z scores of the bond lengths (or angles).

Mol	Type	Chain	Res	Link	Bond lengths			Bond angles		
					Counts	RMSZ	$\# Z > 2$	Counts	RMSZ	$\# Z > 2$
4	MAN	G	5	4	11,11,12	0.61	0	15,15,17	0.89	1 (6%)
3	NAG	F	2	3	14,14,15	0.41	0	17,19,21	1.28	2 (11%)
2	NAG	H	2	2	14,14,15	0.53	0	17,19,21	0.96	1 (5%)
2	MAN	E	6	2	11,11,12	0.71	0	15,15,17	1.14	2 (13%)
4	NAG	G	2	4	14,14,15	0.42	0	17,19,21	1.27	1 (5%)
2	MAN	E	5	2	11,11,12	0.63	0	15,15,17	1.03	1 (6%)
2	NAG	E	2	2	14,14,15	0.54	0	17,19,21	1.08	1 (5%)
4	MAN	G	4	4	11,11,12	0.63	0	15,15,17	1.15	2 (13%)
2	MAN	E	4	2	11,11,12	0.59	0	15,15,17	0.97	0
2	MAN	H	5	2	11,11,12	0.57	0	15,15,17	1.18	1 (6%)
2	MAN	H	6	2	11,11,12	0.69	0	15,15,17	1.58	3 (20%)
2	MAN	H	4	2	11,11,12	0.49	0	15,15,17	1.31	2 (13%)

In the following table, the Chirals column lists the number of chiral outliers, the number of chiral centers analysed, the number of these observed in the model and the number defined in the Chemical Component Dictionary. Similar counts are reported in the Torsion and Rings columns. '-' means no outliers of that kind were identified.

Mol	Type	Chain	Res	Link	Chirals	Torsions	Rings
4	MAN	G	5	4	-	2/2/19/22	0/1/1/1
3	NAG	F	2	3	-	0/6/23/26	0/1/1/1
2	NAG	H	2	2	-	0/6/23/26	0/1/1/1
2	MAN	E	6	2	-	1/2/19/22	0/1/1/1
4	NAG	G	2	4	-	0/6/23/26	0/1/1/1
2	MAN	E	5	2	-	0/2/19/22	0/1/1/1
2	NAG	E	2	2	-	0/6/23/26	0/1/1/1
4	MAN	G	4	4	-	0/2/19/22	0/1/1/1
2	MAN	E	4	2	-	0/2/19/22	0/1/1/1
2	MAN	H	5	2	-	0/2/19/22	0/1/1/1
2	MAN	H	6	2	-	1/2/19/22	0/1/1/1
2	MAN	H	4	2	-	0/2/19/22	0/1/1/1

There are no bond length outliers.

The worst 5 of 17 bond angle outliers are listed below:

Mol	Chain	Res	Type	Atoms	Z	Observed(°)	Ideal(°)
2	H	6	MAN	C1-O5-C5	4.34	118.07	112.19
2	H	5	MAN	C1-O5-C5	3.66	117.15	112.19
4	G	2	NAG	C1-O5-C5	3.53	116.97	112.19
2	E	5	MAN	C1-O5-C5	3.24	116.59	112.19
3	F	2	NAG	C1-O5-C5	3.17	116.49	112.19

There are no chirality outliers.

All (4) torsion outliers are listed below:

Mol	Chain	Res	Type	Atoms
4	G	5	MAN	C4-C5-C6-O6
4	G	5	MAN	O5-C5-C6-O6
2	E	6	MAN	O5-C5-C6-O6
2	H	6	MAN	O5-C5-C6-O6

There are no ring outliers.

No monomer is involved in short contacts.

5.5 Carbohydrates

19 monosaccharides are modelled in this entry.

In the following table, the Counts columns list the number of bonds (or angles) for which Mogul statistics could be retrieved, the number of bonds (or angles) that are observed in the model and the number of bonds (or angles) that are defined in the Chemical Component Dictionary. The Link column lists molecule types, if any, to which the group is linked. The Z score for a bond length (or angle) is the number of standard deviations the observed value is removed from the expected value. A bond length (or angle) with $|Z| > 2$ is considered an outlier worth inspection. RMSZ is the root-mean-square of all Z scores of the bond lengths (or angles).

Mol	Type	Chain	Res	Link	Bond lengths			Bond angles		
					Counts	RMSZ	# Z > 2	Counts	RMSZ	# Z > 2
2	NAG	E	1	1,2	14,14,15	0.54	0	17,19,21	1.15	2 (11%)
2	NAG	E	2	2	14,14,15	0.54	0	17,19,21	1.08	1 (5%)
2	BMA	E	3	2	11,11,12	0.74	0	15,15,17	0.96	1 (6%)
2	MAN	E	4	2	11,11,12	0.59	0	15,15,17	0.97	0
2	MAN	E	5	2	11,11,12	0.63	0	15,15,17	1.03	1 (6%)
2	MAN	E	6	2	11,11,12	0.71	0	15,15,17	1.14	2 (13%)
3	NAG	F	1	1,3	14,14,15	0.59	0	17,19,21	1.17	1 (5%)
3	NAG	F	2	3	14,14,15	0.41	0	17,19,21	1.28	2 (11%)
4	NAG	G	1	1,4	14,14,15	0.67	0	17,19,21	1.14	2 (11%)
4	NAG	G	2	4	14,14,15	0.42	0	17,19,21	1.27	1 (5%)
4	BMA	G	3	4	11,11,12	0.75	0	15,15,17	0.82	1 (6%)
4	MAN	G	4	4	11,11,12	0.63	0	15,15,17	1.15	2 (13%)
4	MAN	G	5	4	11,11,12	0.61	0	15,15,17	0.89	1 (6%)
2	NAG	H	1	1,2	14,14,15	0.51	0	17,19,21	0.95	2 (11%)
2	NAG	H	2	2	14,14,15	0.53	0	17,19,21	0.96	1 (5%)
2	BMA	H	3	2	11,11,12	0.66	0	15,15,17	0.84	0
2	MAN	H	4	2	11,11,12	0.49	0	15,15,17	1.31	2 (13%)
2	MAN	H	5	2	11,11,12	0.57	0	15,15,17	1.18	1 (6%)
2	MAN	H	6	2	11,11,12	0.69	0	15,15,17	1.58	3 (20%)

In the following table, the Chirals column lists the number of chiral outliers, the number of chiral centers analysed, the number of these observed in the model and the number defined in the Chemical Component Dictionary. Similar counts are reported in the Torsion and Rings columns. '-' means no outliers of that kind were identified.

Mol	Type	Chain	Res	Link	Chirals	Torsions	Rings
2	NAG	E	1	1,2	-	0/6/23/26	0/1/1/1
2	NAG	E	2	2	-	0/6/23/26	0/1/1/1

Continued on next page...

Continued from previous page...

Mol	Type	Chain	Res	Link	Chirals	Torsions	Rings
2	BMA	E	3	2	-	0/2/19/22	0/1/1/1
2	MAN	E	4	2	-	0/2/19/22	0/1/1/1
2	MAN	E	5	2	-	0/2/19/22	0/1/1/1
2	MAN	E	6	2	-	1/2/19/22	0/1/1/1
3	NAG	F	1	1,3	-	0/6/23/26	0/1/1/1
3	NAG	F	2	3	-	0/6/23/26	0/1/1/1
4	NAG	G	1	1,4	-	0/6/23/26	0/1/1/1
4	NAG	G	2	4	-	0/6/23/26	0/1/1/1
4	BMA	G	3	4	-	2/2/19/22	0/1/1/1
4	MAN	G	4	4	-	0/2/19/22	0/1/1/1
4	MAN	G	5	4	-	2/2/19/22	0/1/1/1
2	NAG	H	1	1,2	-	0/6/23/26	0/1/1/1
2	NAG	H	2	2	-	0/6/23/26	0/1/1/1
2	BMA	H	3	2	-	2/2/19/22	0/1/1/1
2	MAN	H	4	2	-	0/2/19/22	0/1/1/1
2	MAN	H	5	2	-	0/2/19/22	0/1/1/1
2	MAN	H	6	2	-	1/2/19/22	0/1/1/1

There are no bond length outliers.

The worst 5 of 26 bond angle outliers are listed below:

Mol	Chain	Res	Type	Atoms	Z	Observed(°)	Ideal(°)
2	H	6	MAN	C1-O5-C5	4.34	118.07	112.19
2	H	5	MAN	C1-O5-C5	3.66	117.15	112.19
4	G	2	NAG	C1-O5-C5	3.53	116.97	112.19
2	E	5	MAN	C1-O5-C5	3.24	116.59	112.19
3	F	2	NAG	C1-O5-C5	3.17	116.49	112.19

There are no chirality outliers.

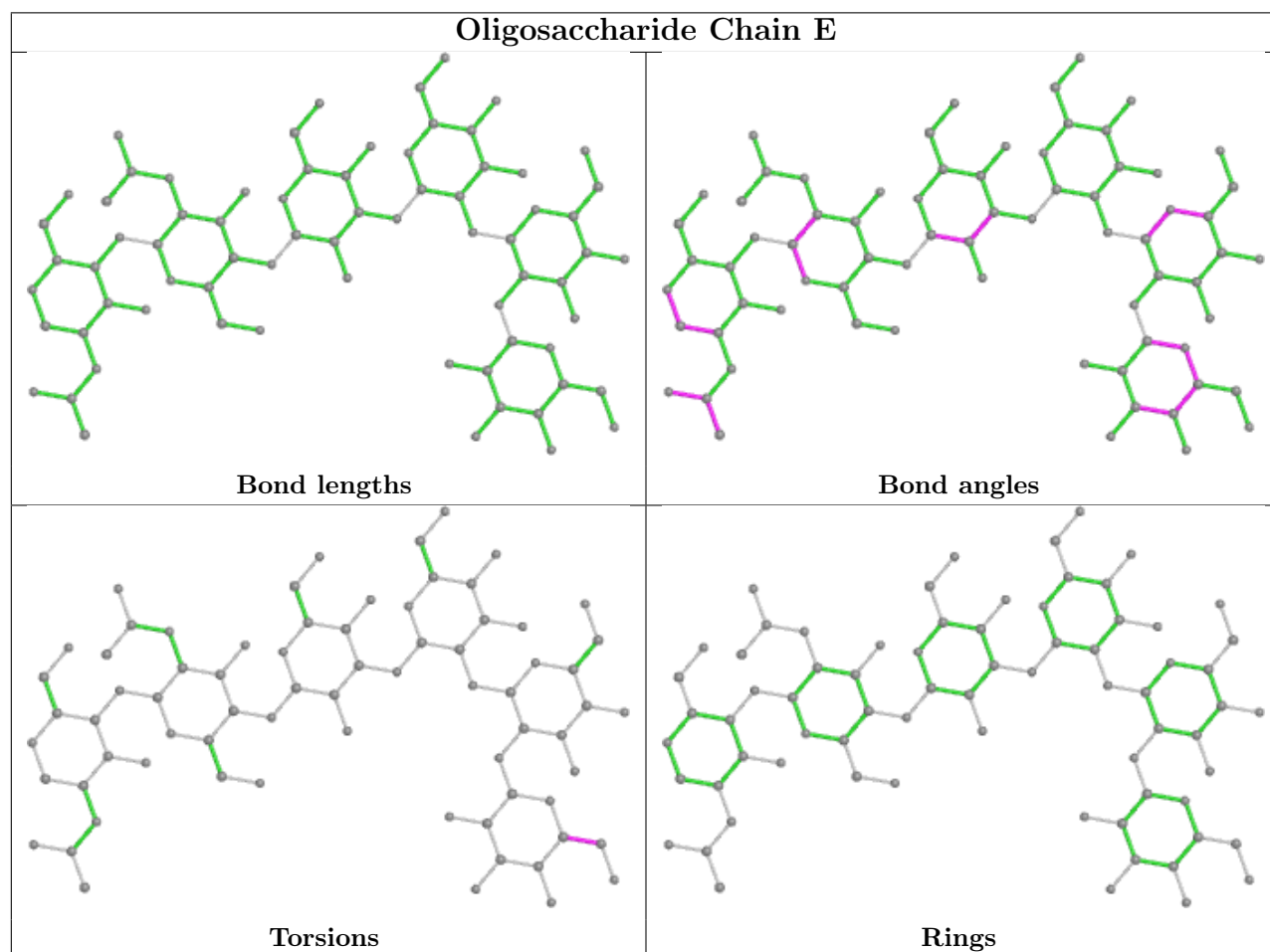
5 of 8 torsion outliers are listed below:

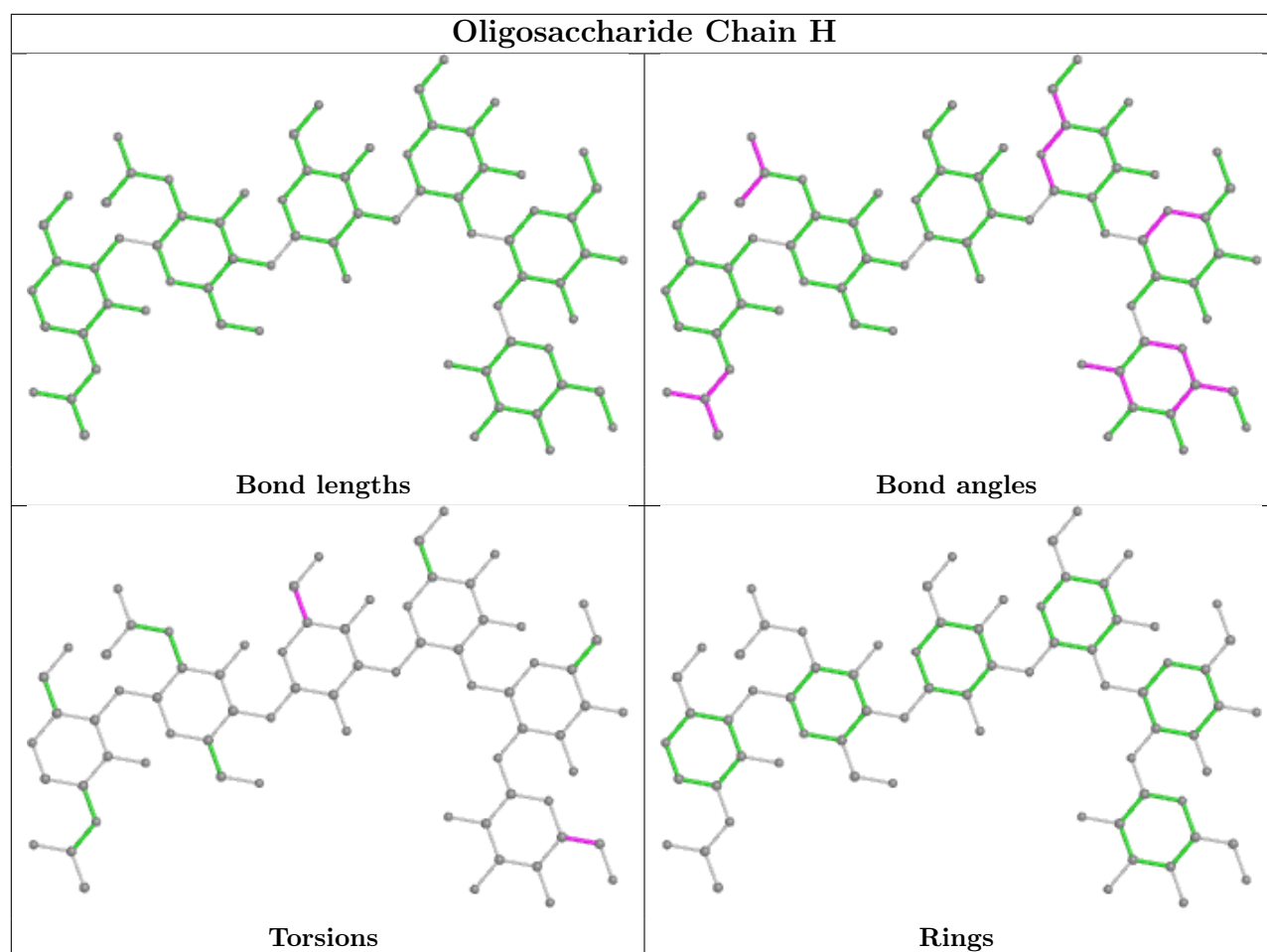
Mol	Chain	Res	Type	Atoms
4	G	5	MAN	C4-C5-C6-O6
4	G	5	MAN	O5-C5-C6-O6
2	H	3	BMA	O5-C5-C6-O6
2	H	3	BMA	C4-C5-C6-O6
4	G	3	BMA	C4-C5-C6-O6

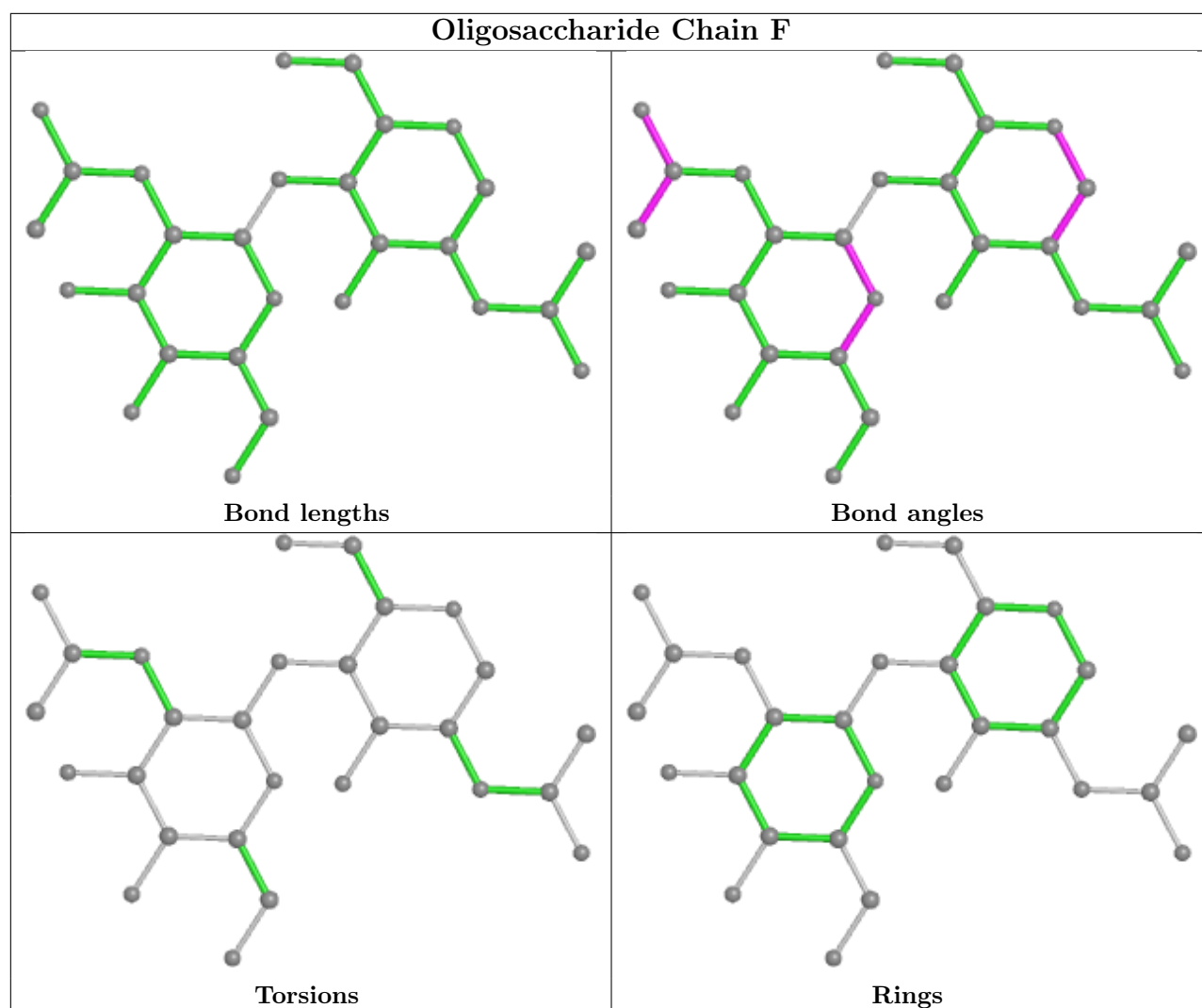
There are no ring outliers.

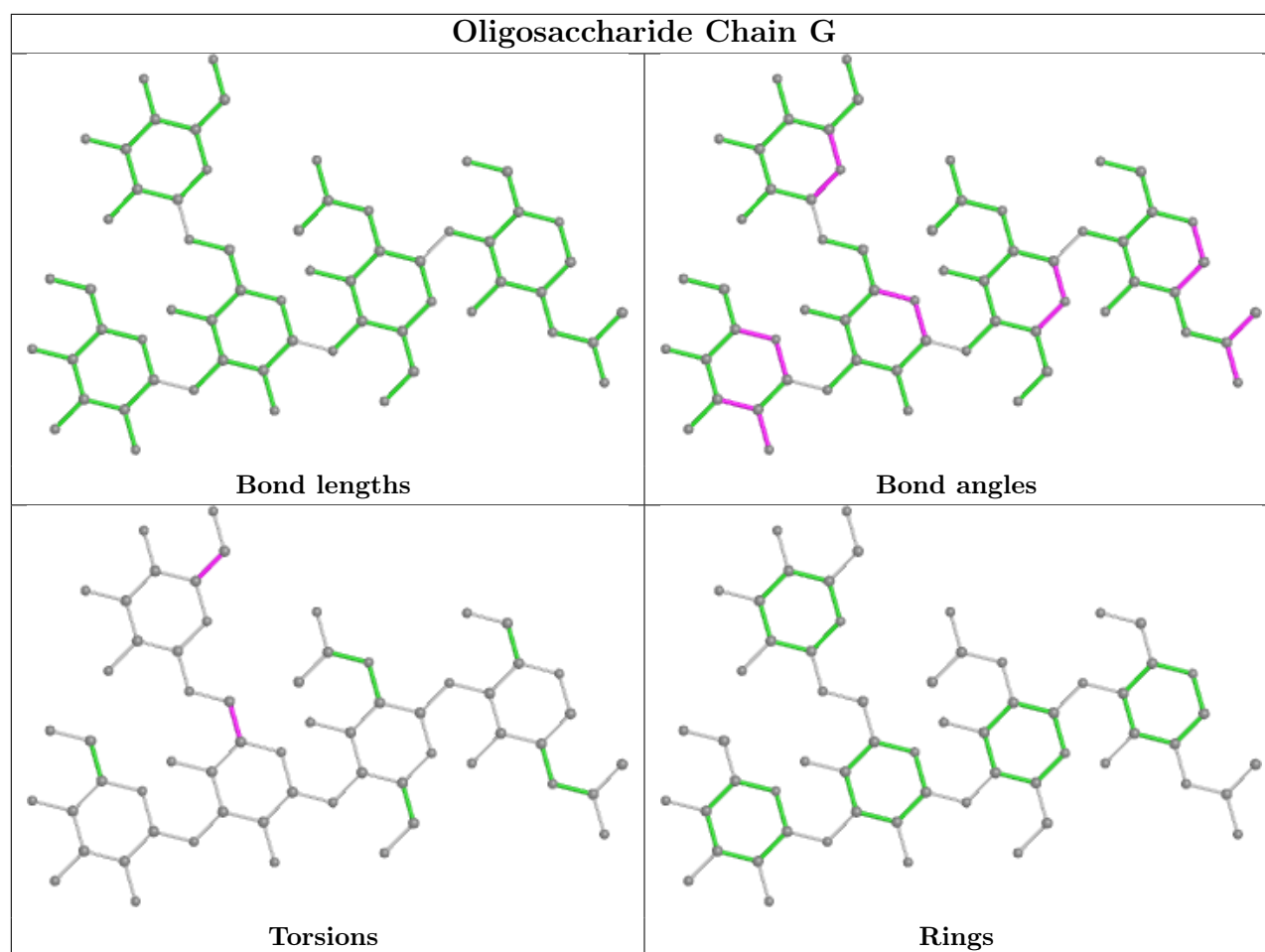
No monomer is involved in short contacts.

The following is a two-dimensional graphical depiction of Mogul quality analysis of bond lengths, bond angles, torsion angles, and ring geometry for oligosaccharide.









5.6 Ligand geometry [i](#)

27 ligands are modelled in this entry.

In the following table, the Counts columns list the number of bonds (or angles) for which Mogul statistics could be retrieved, the number of bonds (or angles) that are observed in the model and the number of bonds (or angles) that are defined in the Chemical Component Dictionary. The Link column lists molecule types, if any, to which the group is linked. The Z score for a bond length (or angle) is the number of standard deviations the observed value is removed from the expected value. A bond length (or angle) with $|Z| > 2$ is considered an outlier worth inspection. RMSZ is the root-mean-square of all Z scores of the bond lengths (or angles).

Mol	Type	Chain	Res	Link	Bond lengths			Bond angles		
					Counts	RMSZ	$\# Z > 2$	Counts	RMSZ	$\# Z > 2$
7	NAG	B	503	1	14,14,15	0.66	0	17,19,21	1.60	5 (29%)
6	PO4	A	509	-	4,4,4	0.84	0	6,6,6	0.87	0
6	PO4	C	507	-	4,4,4	0.91	0	6,6,6	0.70	0
6	PO4	B	506	-	4,4,4	1.63	1 (25%)	6,6,6	0.42	0
6	PO4	D	511	-	4,4,4	1.27	0	6,6,6	0.89	0
5	79B	A	507	1	41,42,43	1.32	3 (7%)	51,55,57	2.19	9 (17%)

Mol	Type	Chain	Res	Link	Bond lengths			Bond angles		
					Counts	RMSZ	# Z > 2	Counts	RMSZ	# Z > 2
6	PO4	C	511	-	4,4,4	0.80	0	6,6,6	0.59	0
8	7E4	C	506	1	41,42,43	1.28	3 (7%)	51,55,57	2.46	15 (29%)
6	PO4	D	512	-	4,4,4	1.09	0	6,6,6	0.92	0
7	NAG	D	507	1	14,14,15	0.52	0	17,19,21	1.31	1 (5%)
6	PO4	A	510	-	4,4,4	1.30	0	6,6,6	0.66	0
6	PO4	C	510	-	4,4,4	1.05	0	6,6,6	0.56	0
6	PO4	D	509	-	4,4,4	0.90	0	6,6,6	0.49	0
6	PO4	C	508	-	4,4,4	1.20	0	6,6,6	0.31	0
6	PO4	A	508	-	4,4,4	0.83	0	6,6,6	0.66	0
6	PO4	A	513	-	4,4,4	0.93	0	6,6,6	0.77	0
5	79B	D	508	1	41,42,43	1.38	3 (7%)	51,55,57	2.18	11 (21%)
6	PO4	B	509	-	4,4,4	0.90	0	6,6,6	0.53	0
6	PO4	D	513	-	4,4,4	0.84	0	6,6,6	0.46	0
6	PO4	D	510	-	4,4,4	0.90	0	6,6,6	0.60	0
6	PO4	B	508	-	4,4,4	0.87	0	6,6,6	0.48	0
6	PO4	B	505	-	4,4,4	0.88	0	6,6,6	0.56	0
6	PO4	B	507	-	4,4,4	1.05	0	6,6,6	0.66	0
8	7E4	B	504	1	41,42,43	1.69	3 (7%)	51,55,57	2.51	15 (29%)
6	PO4	C	509	-	4,4,4	1.09	0	6,6,6	0.69	0
6	PO4	A	511	-	4,4,4	1.24	0	6,6,6	0.71	0
6	PO4	A	512	-	4,4,4	0.83	0	6,6,6	0.79	0

In the following table, the Chirals column lists the number of chiral outliers, the number of chiral centers analysed, the number of these observed in the model and the number defined in the Chemical Component Dictionary. Similar counts are reported in the Torsion and Rings columns. '-' means no outliers of that kind were identified.

Mol	Type	Chain	Res	Link	Chirals	Torsions	Rings
7	NAG	B	503	1	-	2/6/23/26	0/1/1/1
5	79B	A	507	1	-	6/19/28/29	0/5/5/5
8	7E4	B	504	1	-	7/19/28/29	0/5/5/5
8	7E4	C	506	1	-	8/19/28/29	0/5/5/5
7	NAG	D	507	1	-	0/6/23/26	0/1/1/1
5	79B	D	508	1	-	8/19/28/29	0/5/5/5

The worst 5 of 13 bond length outliers are listed below:

Mol	Chain	Res	Type	Atoms	Z	Observed(Å)	Ideal(Å)
8	B	504	7E4	C12-C11	6.71	1.28	1.19
5	D	508	79B	C13-C12	-6.36	1.29	1.44

Continued on next page...

Continued from previous page...

Mol	Chain	Res	Type	Atoms	Z	Observed(Å)	Ideal(Å)
8	B	504	7E4	C13-C12	-6.34	1.29	1.44
5	A	507	79B	C13-C12	-5.67	1.30	1.44
8	C	506	7E4	C13-C12	-5.29	1.31	1.44

The worst 5 of 56 bond angle outliers are listed below:

Mol	Chain	Res	Type	Atoms	Z	Observed(°)	Ideal(°)
5	D	508	79B	N26-C25-N24	-8.78	119.21	126.11
5	A	507	79B	N26-C25-N24	-8.70	119.27	126.11
8	C	506	7E4	N26-C25-N24	-8.26	119.62	126.11
5	A	507	79B	C25-N26-C27	8.15	122.03	116.50
5	D	508	79B	C25-N26-C27	8.13	122.02	116.50

There are no chirality outliers.

5 of 31 torsion outliers are listed below:

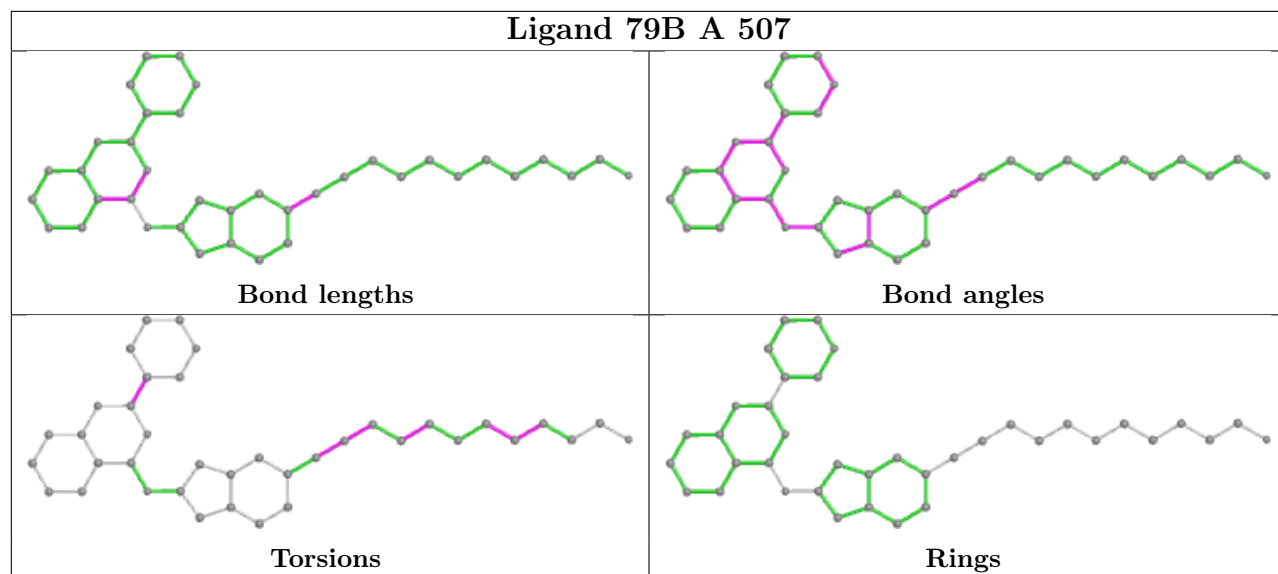
Mol	Chain	Res	Type	Atoms
8	B	504	7E4	N24-C25-C33-C38
5	D	508	79B	C6-C7-C8-C9
8	B	504	7E4	C10-C11-C12-C13
8	C	506	7E4	C4-C5-C6-C7
8	B	504	7E4	C4-C5-C6-C7

There are no ring outliers.

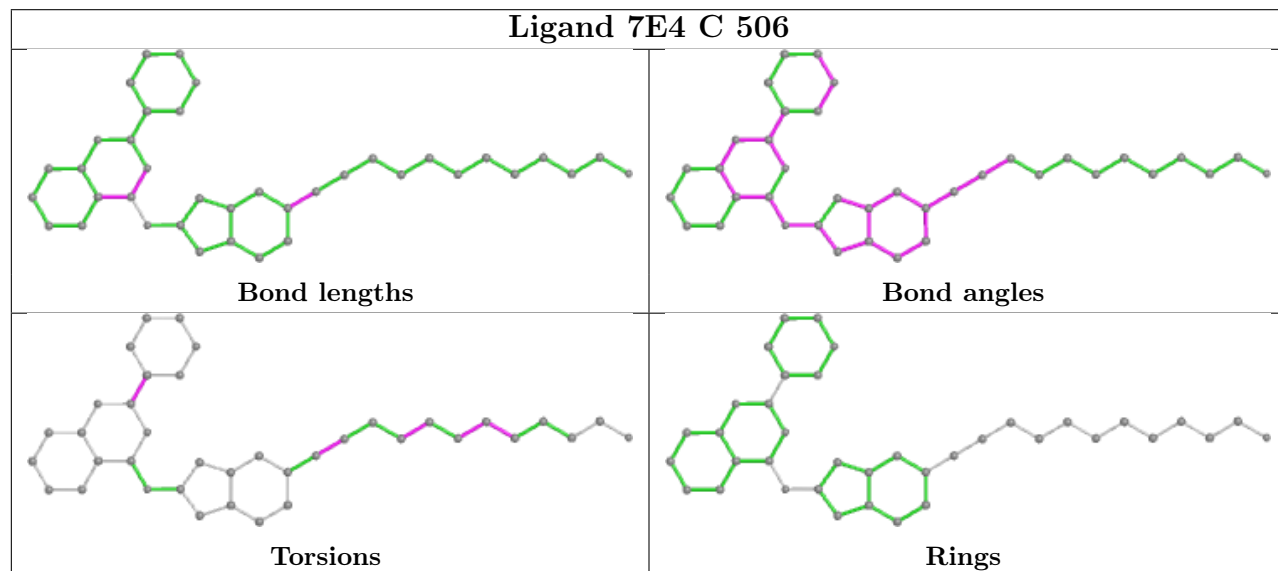
No monomer is involved in short contacts.

The following is a two-dimensional graphical depiction of Mogul quality analysis of bond lengths, bond angles, torsion angles, and ring geometry for all instances of the Ligand of Interest. In addition, ligands with molecular weight > 250 and outliers as shown on the validation Tables will also be included. For torsion angles, if less than 5% of the Mogul distribution of torsion angles is within 10 degrees of the torsion angle in question, then that torsion angle is considered an outlier. Any bond that is central to one or more torsion angles identified as an outlier by Mogul will be highlighted in the graph. For rings, the root-mean-square deviation (RMSD) between the ring in question and similar rings identified by Mogul is calculated over all ring torsion angles. If the average RMSD is greater than 60 degrees and the minimal RMSD between the ring in question and any Mogul-identified rings is also greater than 60 degrees, then that ring is considered an outlier. The outliers are highlighted in purple. The color gray indicates Mogul did not find sufficient equivalents in the CSD to analyse the geometry.

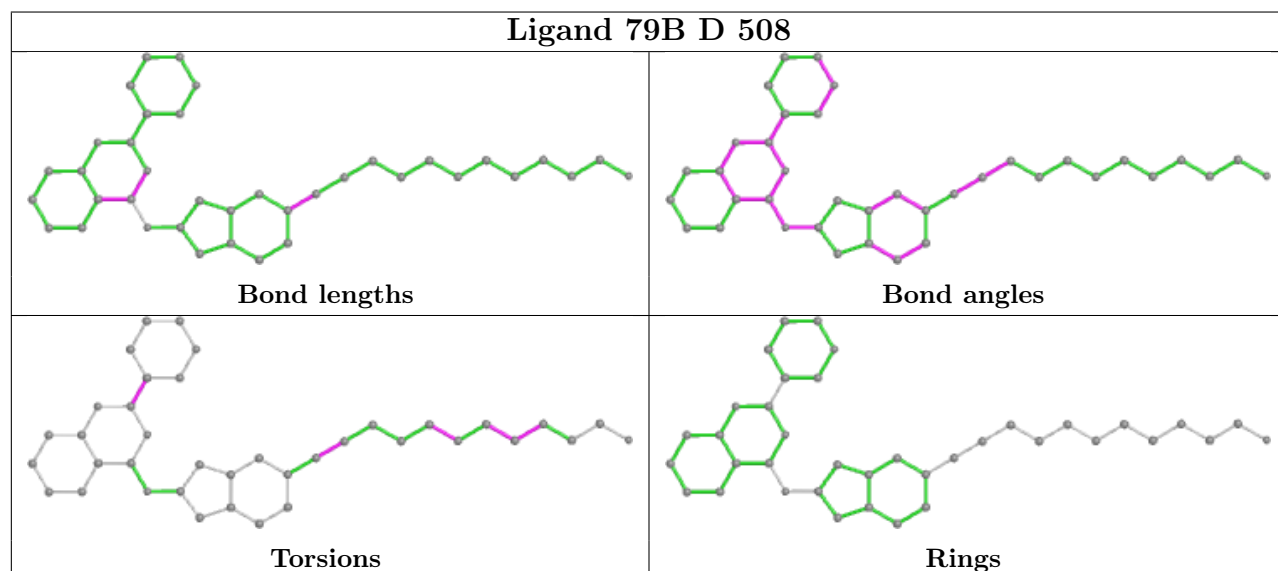
Ligand 79B A 507

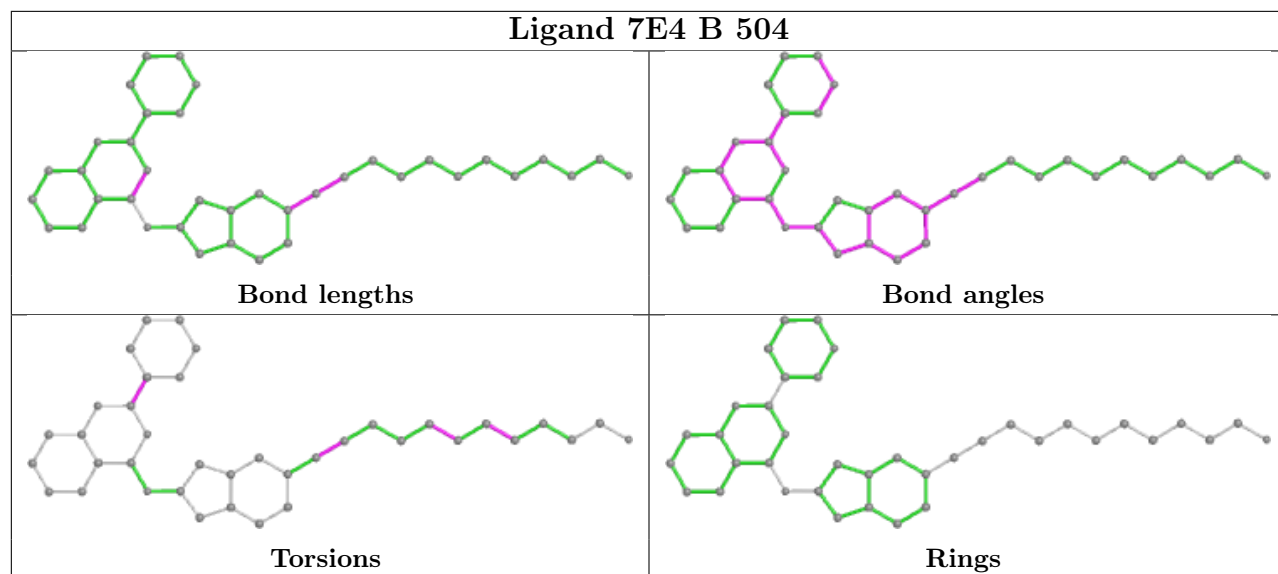


Ligand 7E4 C 506



Ligand 79B D 508





5.7 Other polymers [i](#)

There are no such residues in this entry.

5.8 Polymer linkage issues [i](#)

There are no chain breaks in this entry.

6 Fit of model and data [i](#)

6.1 Protein, DNA and RNA chains [i](#)

In the following table, the column labelled ‘#RSRZ > 2’ contains the number (and percentage) of RSRZ outliers, followed by percent RSRZ outliers for the chain as percentile scores relative to all X-ray entries and entries of similar resolution. The OWAB column contains the minimum, median, 95th percentile and maximum values of the occupancy-weighted average B-factor per residue. The column labelled ‘Q < 0.9’ lists the number of (and percentage) of residues with an average occupancy less than 0.9.

Mol	Chain	Analysed	<RSRZ>	#RSRZ>2	OWAB(Å ²)	Q<0.9
1	A	497/497 (100%)	-0.17	6 (1%) 79 77	23, 34, 53, 80	14 (2%)
1	B	497/497 (100%)	-0.05	4 (0%) 86 85	22, 35, 56, 80	15 (3%)
1	C	496/497 (99%)	0.03	10 (2%) 65 63	24, 38, 59, 87	16 (3%)
1	D	497/497 (100%)	0.09	12 (2%) 59 56	29, 43, 62, 88	14 (2%)
All	All	1987/1988 (99%)	-0.03	32 (1%) 72 70	22, 38, 59, 88	59 (2%)

The worst 5 of 32 RSRZ outliers are listed below:

Mol	Chain	Res	Type	RSRZ
1	C	61	THR	4.4
1	D	61	THR	4.1
1	D	63	THR	4.0
1	D	60	HIS	3.2
1	A	145	HIS	2.9

6.2 Non-standard residues in protein, DNA, RNA chains [i](#)

In the following table, the Atoms column lists the number of modelled atoms in the group and the number defined in the chemical component dictionary. The B-factors column lists the minimum, median, 95th percentile and maximum values of B factors of atoms in the group. The column labelled ‘Q < 0.9’ lists the number of atoms with occupancy less than 0.9.

Mol	Type	Chain	Res	Atoms	RSCC	RSR	B-factors(Å ²)	Q<0.9
2	MAN	E	5	11/12	0.77	0.27	52,60,71,75	0
2	MAN	H	5	11/12	0.80	0.36	68,86,91,95	1
2	MAN	H	6	11/12	0.80	0.28	65,74,78,82	5
2	MAN	E	6	11/12	0.83	0.33	63,76,83,92	0
4	MAN	G	4	11/12	0.84	0.19	52,66,72,90	0
2	MAN	E	4	11/12	0.85	0.29	53,61,67,68	0
4	MAN	G	5	11/12	0.88	0.15	54,61,67,67	0

Continued on next page...

Continued from previous page...

Mol	Type	Chain	Res	Atoms	RSCC	RSR	B-factors(\AA^2)	Q<0.9
2	MAN	H	4	11/12	0.89	0.33	60,73,93,100	2
2	NAG	H	2	14/15	0.90	0.17	41,57,72,72	0
3	NAG	F	2	14/15	0.90	0.14	43,64,81,102	0
2	NAG	E	2	14/15	0.94	0.14	40,45,58,61	0
4	NAG	G	2	14/15	0.95	0.10	35,42,50,61	0

6.3 Carbohydrates [i](#)

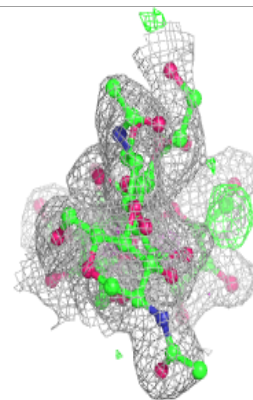
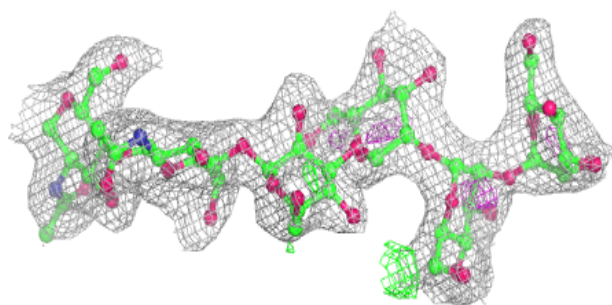
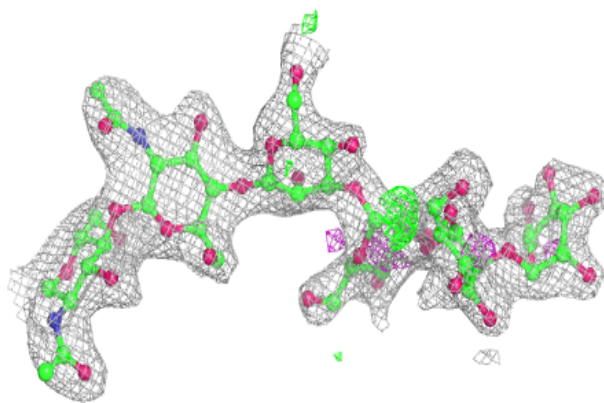
In the following table, the Atoms column lists the number of modelled atoms in the group and the number defined in the chemical component dictionary. The B-factors column lists the minimum, median, 95th percentile and maximum values of B factors of atoms in the group. The column labelled 'Q< 0.9' lists the number of atoms with occupancy less than 0.9.

Mol	Type	Chain	Res	Atoms	RSCC	RSR	B-factors(\AA^2)	Q<0.9
2	MAN	E	5	11/12	0.77	0.27	52,60,71,75	0
2	MAN	H	5	11/12	0.80	0.36	68,86,91,95	1
2	MAN	H	6	11/12	0.80	0.28	65,74,78,82	5
2	BMA	H	3	11/12	0.81	0.25	72,79,98,102	0
2	MAN	E	6	11/12	0.83	0.33	63,76,83,92	0
4	MAN	G	4	11/12	0.84	0.19	52,66,72,90	0
2	MAN	E	4	11/12	0.85	0.29	53,61,67,68	0
2	BMA	E	3	11/12	0.86	0.19	50,66,79,84	0
4	MAN	G	5	11/12	0.88	0.15	54,61,67,67	0
2	MAN	H	4	11/12	0.89	0.33	60,73,93,100	2
2	NAG	H	2	14/15	0.90	0.17	41,57,72,72	0
3	NAG	F	2	14/15	0.90	0.14	43,64,81,102	0
3	NAG	F	1	14/15	0.92	0.11	32,45,55,63	0
4	BMA	G	3	11/12	0.93	0.18	42,48,55,56	0
4	NAG	G	1	14/15	0.94	0.11	29,36,45,50	0
2	NAG	E	2	14/15	0.94	0.14	40,45,58,61	0
4	NAG	G	2	14/15	0.95	0.10	35,42,50,61	0
2	NAG	H	1	14/15	0.95	0.12	36,47,53,54	0
2	NAG	E	1	14/15	0.96	0.09	31,40,44,45	0

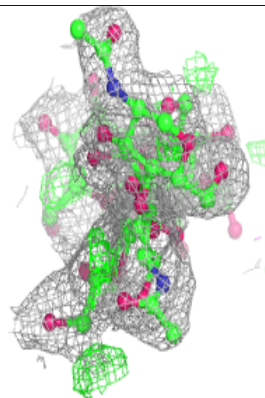
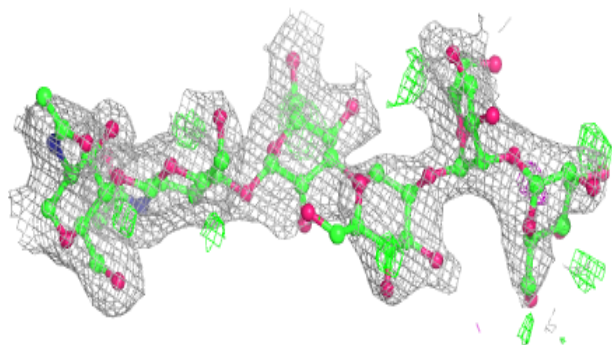
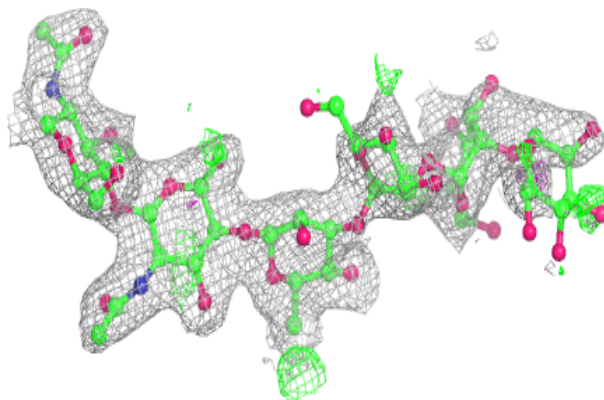
The following is a graphical depiction of the model fit to experimental electron density for oligosaccharide. Each fit is shown from different orientation to approximate a three-dimensional view.

Electron density around Chain E:

$2mF_o-DF_c$ (at 0.7 rmsd) in gray
 mF_o-DF_c (at 3 rmsd) in purple (negative)
and green (positive)

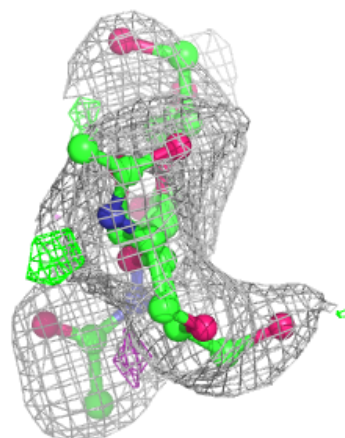
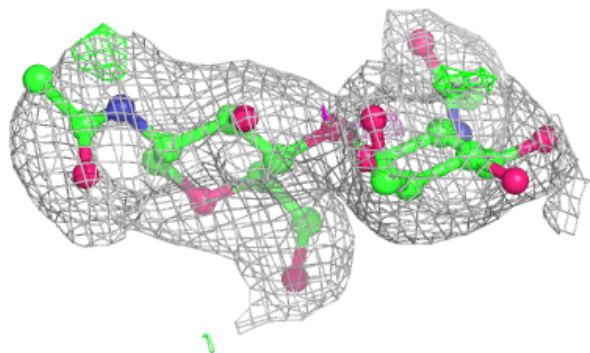
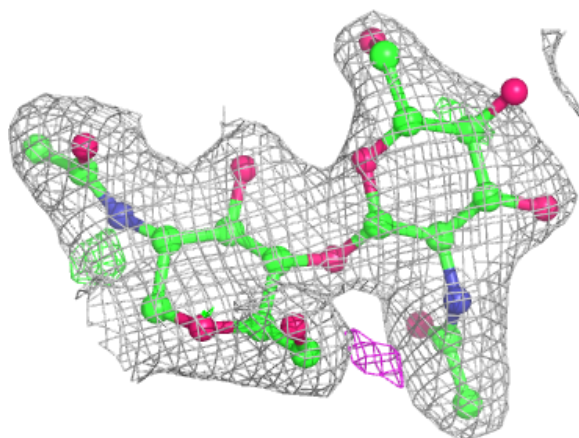
**Electron density around Chain H:**

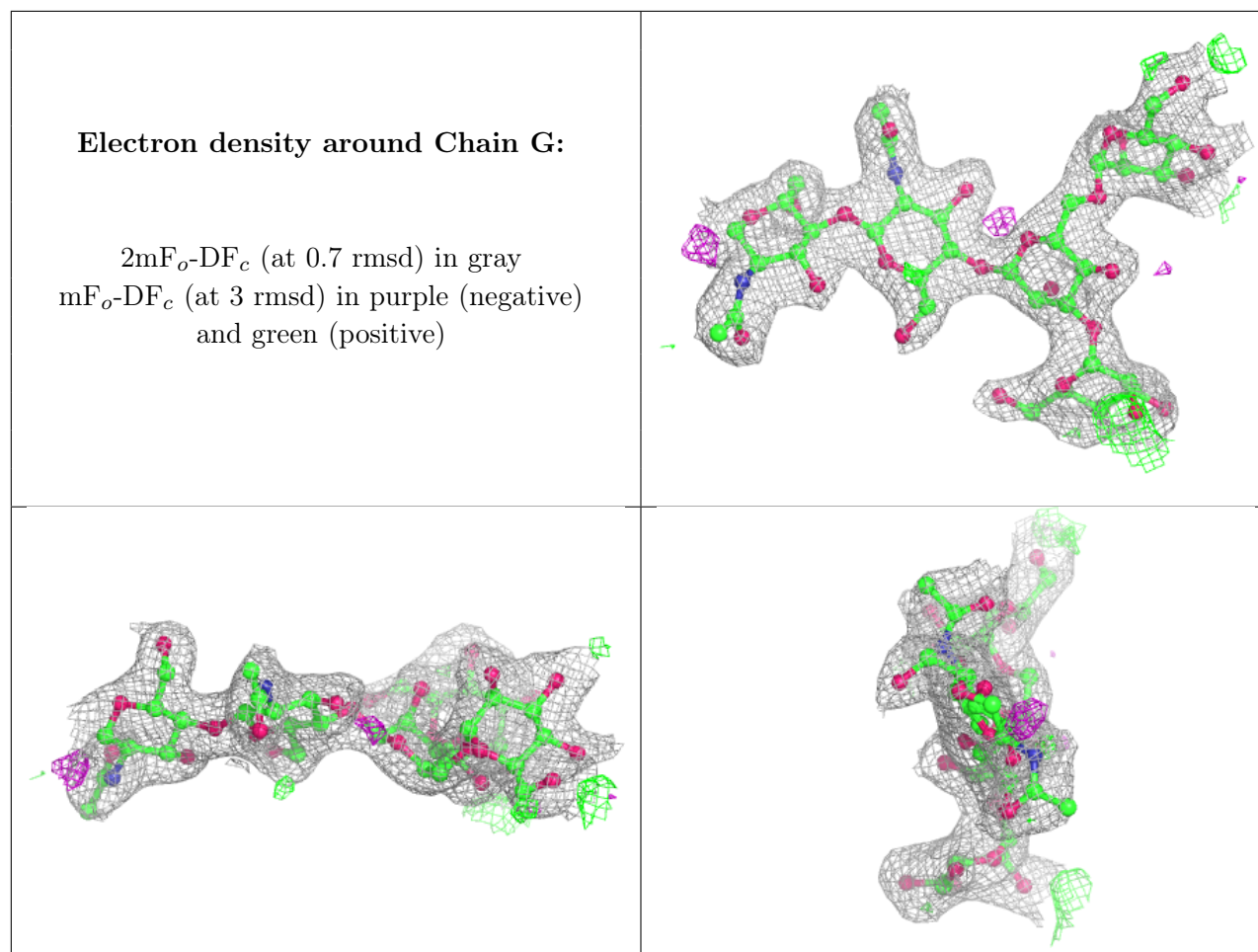
$2mF_o-DF_c$ (at 0.7 rmsd) in gray
 mF_o-DF_c (at 3 rmsd) in purple (negative)
and green (positive)



Electron density around Chain F:

$2mF_o-DF_c$ (at 0.7 rmsd) in gray
 mF_o-DF_c (at 3 rmsd) in purple (negative)
and green (positive)





6.4 Ligands [i](#)

In the following table, the Atoms column lists the number of modelled atoms in the group and the number defined in the chemical component dictionary. The B-factors column lists the minimum, median, 95th percentile and maximum values of B factors of atoms in the group. The column labelled 'Q< 0.9' lists the number of atoms with occupancy less than 0.9.

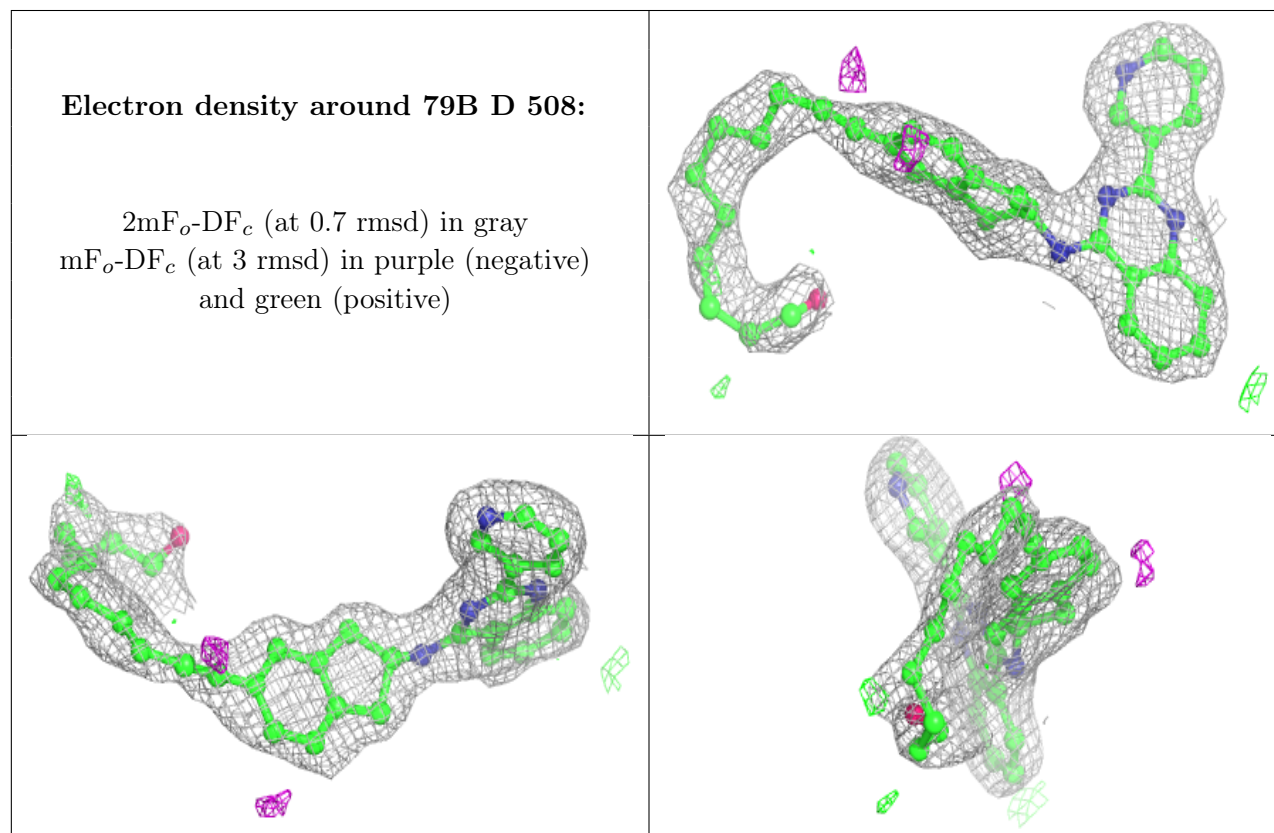
Mol	Type	Chain	Res	Atoms	RSCC	RSR	B-factors(Å ²)	Q<0.9
6	PO4	A	508	5/5	0.87	0.17	56,57,88,95	0
6	PO4	B	505	5/5	0.87	0.23	59,61,87,94	0
6	PO4	C	511	5/5	0.87	0.37	68,70,81,96	0
6	PO4	D	513	5/5	0.87	0.18	66,83,88,109	0
7	NAG	B	503	14/15	0.87	0.21	47,65,73,78	0
7	NAG	D	507	14/15	0.88	0.21	53,71,81,83	0
6	PO4	D	510	5/5	0.89	0.36	76,81,101,109	0
6	PO4	C	507	5/5	0.89	0.14	59,61,88,94	0
6	PO4	A	512	5/5	0.90	0.24	54,60,87,89	0
6	PO4	D	509	5/5	0.93	0.19	62,78,82,92	0
6	PO4	A	509	5/5	0.94	0.23	68,71,78,83	0

Continued on next page...

Continued from previous page...

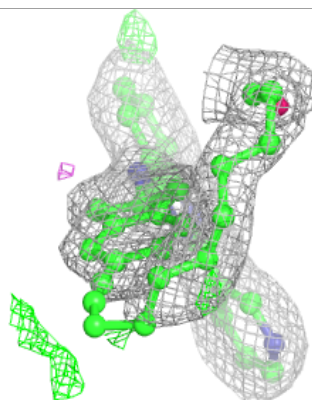
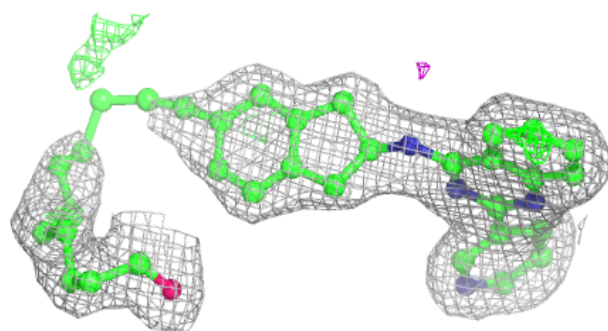
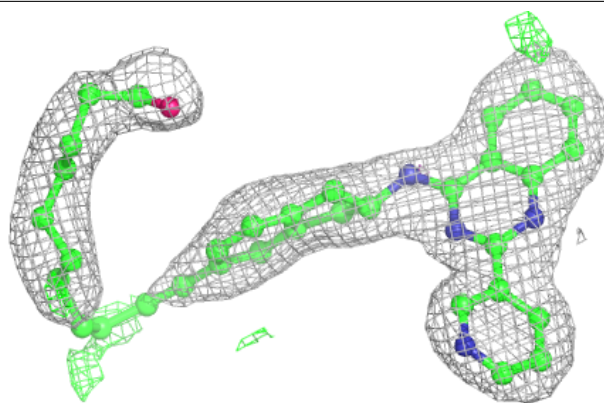
Mol	Type	Chain	Res	Atoms	RSCC	RSR	B-factors(\AA^2)	Q<0.9
6	PO4	B	508	5/5	0.94	0.20	49,82,104,118	0
5	79B	D	508	38/39	0.94	0.15	39,48,85,90	0
8	7E4	C	506	38/39	0.94	0.15	27,34,78,91	0
8	7E4	B	504	38/39	0.95	0.17	23,29,64,89	0
6	PO4	C	510	5/5	0.96	0.20	53,64,80,86	0
6	PO4	A	513	5/5	0.96	0.17	53,58,62,81	0
6	PO4	B	509	5/5	0.96	0.23	71,82,88,108	0
5	79B	A	507	38/39	0.96	0.14	26,34,74,79	0
6	PO4	D	512	5/5	0.96	0.14	53,53,60,60	0
6	PO4	B	507	5/5	0.98	0.09	43,49,55,55	0
6	PO4	C	509	5/5	0.98	0.11	46,50,60,61	0
6	PO4	A	511	5/5	0.99	0.11	41,44,46,51	0
6	PO4	C	508	5/5	0.99	0.10	29,31,36,44	0
6	PO4	A	510	5/5	0.99	0.12	27,27,33,41	0
6	PO4	D	511	5/5	0.99	0.12	34,39,41,41	0
6	PO4	B	506	5/5	0.99	0.14	29,29,37,39	0

The following is a graphical depiction of the model fit to experimental electron density of all instances of the Ligand of Interest. In addition, ligands with molecular weight > 250 and outliers as shown on the geometry validation Tables will also be included. Each fit is shown from different orientation to approximate a three-dimensional view.

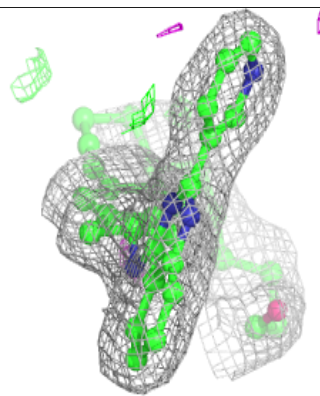
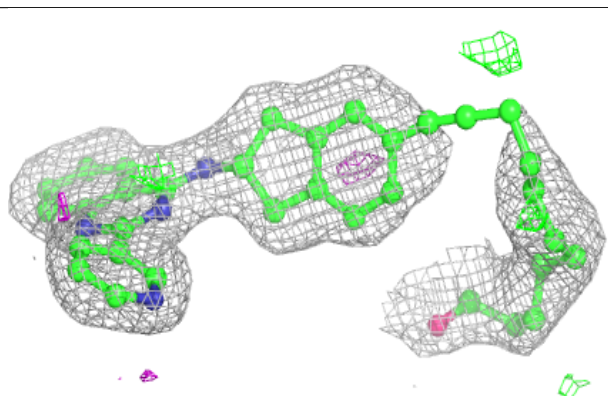
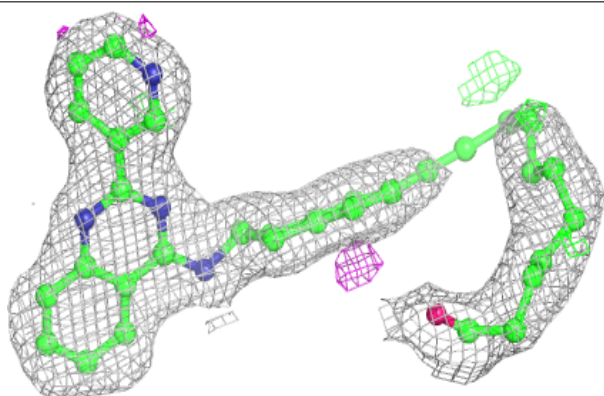


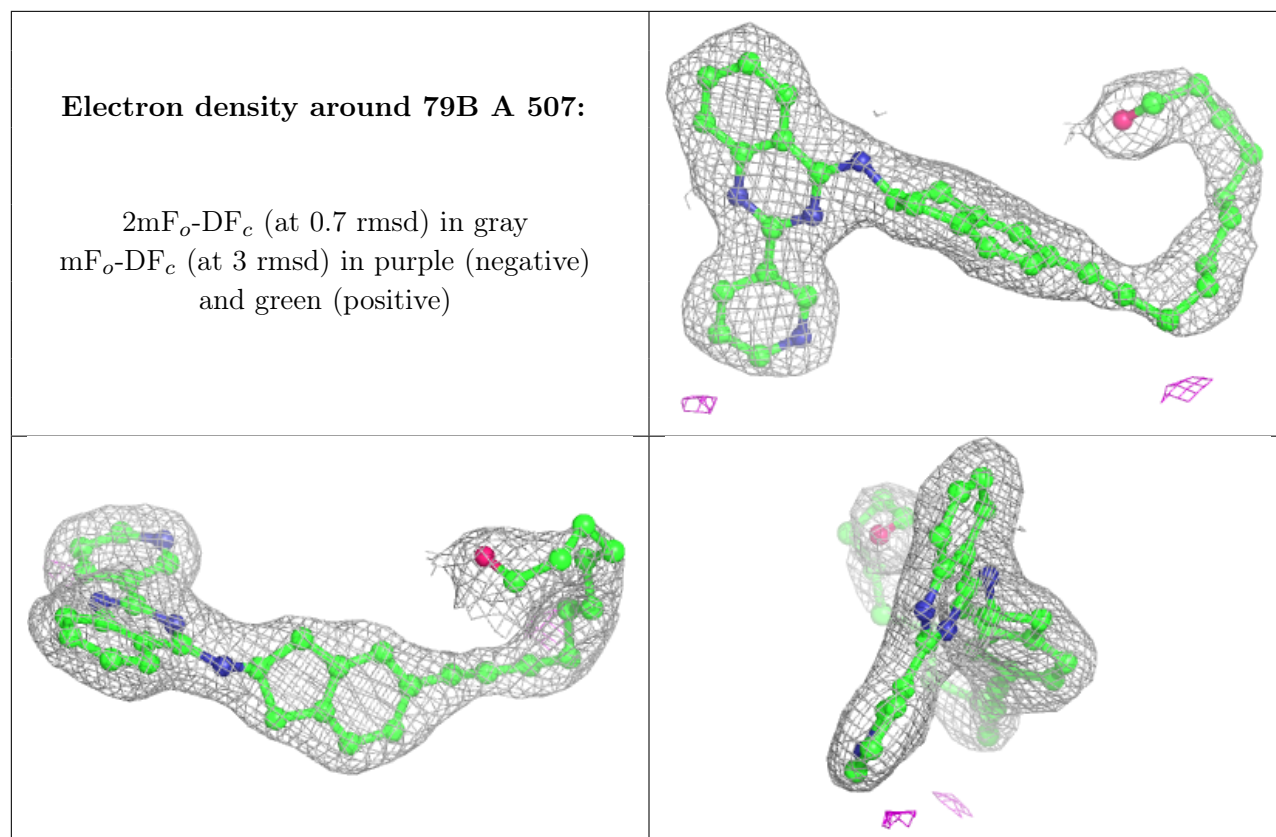
Electron density around 7E4 C 506:

$2mF_o-DF_c$ (at 0.7 rmsd) in gray
 mF_o-DF_c (at 3 rmsd) in purple (negative)
and green (positive)

**Electron density around 7E4 B 504:**

$2mF_o-DF_c$ (at 0.7 rmsd) in gray
 mF_o-DF_c (at 3 rmsd) in purple (negative)
and green (positive)





6.5 Other polymers [i](#)

There are no such residues in this entry.