



Full wwPDB EM Validation Report ⓘ

Mar 8, 2026 – 02:54 AM UTC

PDB ID : 9IXA / pdb_00009ixa
EMDB ID : EMD-60966
Title : Cryo-EM structure of chikungunya virus glycoprotein E1-E2 with C34 Fab.
Authors : Han, X.; Ji, C.; Wang, F.; Tian, S.; Gao, F.G.; Yan, J.
Deposited on : 2024-07-26
Resolution : 3.11 Å (reported)

This is a Full wwPDB EM Validation Report for a publicly released PDB entry.

We welcome your comments at validation@mail.wwpdb.org

A user guide is available at

<https://www.wwpdb.org/validation/2017/EMValidationReportHelp>

with specific help available everywhere you see the ⓘ symbol.

The types of validation reports are described at

<http://www.wwpdb.org/validation/2017/FAQs#types>.

The following versions of software and data (see [references ⓘ](#)) were used in the production of this report:

EMDB validation analysis	:	0.0.1.dev132
Mogul	:	2022.3.0, CSD as543be (2022)
MolProbity	:	4-5-2 with Phenix2.0
Percentile statistics	:	20250101.v01 (using entries in the PDB archive January 1st 2025)
EM percentile statistics	:	202505.v01 (Using data in the EMDB archive up until May 2025)
MapQ	:	1.9.13
Ideal geometry (proteins)	:	Engh & Huber (2001)
Ideal geometry (DNA, RNA)	:	Parkinson et al. (1996)
Validation Pipeline (wwPDB-VP)	:	2.49

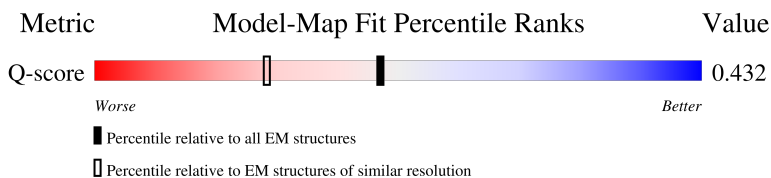
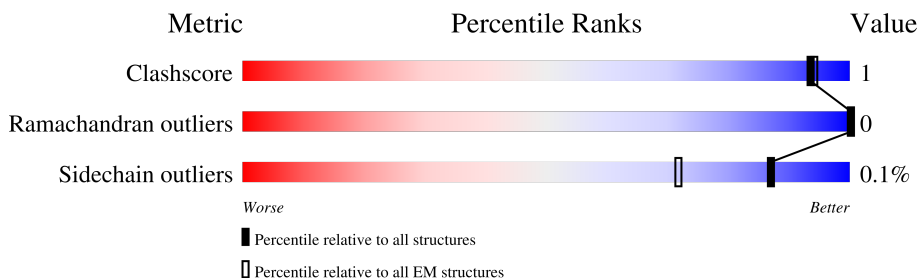
1 Overall quality at a glance

The following experimental techniques were used to determine the structure:

ELECTRON MICROSCOPY

The reported resolution of this entry is 3.11 Å.

Percentile scores (ranging between 0-100) for global validation metrics of the entry are shown in the following graphic. The table shows the number of entries on which the scores are based.



Metric	Whole archive (#Entries)	EM structures (#Entries)	Similar EM resolution (#Entries, resolution range(Å))
Clashscore	229148	23984	-
Ramachandran outliers	224038	23583	-
Sidechain outliers	223484	23102	-
Q-score	-	25397	14465 (2.61 - 3.61)

The table below summarises the geometric issues observed across the polymeric chains and their fit to the map. The red, orange, yellow and green segments of the bar indicate the fraction of residues that contain outliers for ≥ 3 , 2, 1 and 0 types of geometric quality criteria respectively. A grey segment represents the fraction of residues that are not modelled. The numeric value for each fraction is indicated below the corresponding segment, with a dot representing fractions $\leq 5\%$. The upper red bar (where present) indicates the fraction of residues that have poor fit to the EM map (all-atom inclusion $< 40\%$). The numeric value is given above the bar.

Mol	Chain	Length	Quality of chain
1	A	406	 7% 75% 8% 17%
2	B	441	 40% 82% 5% 13%
3	H	268	 77% 6% 16%
4	L	241	 81% 6% 12%

2 Entry composition

There are 5 unique types of molecules in this entry. The entry contains 8909 atoms, of which 0 are hydrogens and 0 are deuteriums.

In the tables below, the AltConf column contains the number of residues with at least one atom in alternate conformation and the Trace column contains the number of residues modelled with at most 2 atoms.

- Molecule 1 is a protein called CHIKV E2.

Mol	Chain	Residues	Atoms					AltConf	Trace
1	A	339	Total	C	N	O	S	0	0
			2678	1670	485	503	20		

There is a discrepancy between the modelled and reference sequences:

Chain	Residue	Modelled	Actual	Comment	Reference
A	-64	MET	-	expression tag	UNP C8YZ73

- Molecule 2 is a protein called CHIKV E1.

Mol	Chain	Residues	Atoms					AltConf	Trace
2	B	384	Total	C	N	O	S	0	0
			2915	1841	488	562	24		

There are 29 discrepancies between the modelled and reference sequences:

Chain	Residue	Modelled	Actual	Comment	Reference
B	-19	GLY	-	expression tag	UNP D1GCB6
B	-18	GLY	-	expression tag	UNP D1GCB6
B	-17	GLY	-	expression tag	UNP D1GCB6
B	-16	GLY	-	expression tag	UNP D1GCB6
B	-15	SER	-	expression tag	UNP D1GCB6
B	-14	GLY	-	expression tag	UNP D1GCB6
B	-13	GLY	-	expression tag	UNP D1GCB6
B	-12	GLY	-	expression tag	UNP D1GCB6
B	-11	GLY	-	expression tag	UNP D1GCB6
B	-10	SER	-	expression tag	UNP D1GCB6
B	-9	GLY	-	expression tag	UNP D1GCB6
B	-8	GLY	-	expression tag	UNP D1GCB6
B	-7	GLY	-	expression tag	UNP D1GCB6
B	-6	GLY	-	expression tag	UNP D1GCB6
B	-5	SER	-	expression tag	UNP D1GCB6
B	-4	GLY	-	expression tag	UNP D1GCB6

Continued on next page...

Continued from previous page...

Chain	Residue	Modelled	Actual	Comment	Reference
B	-3	GLY	-	expression tag	UNP D1GCB6
B	-2	GLY	-	expression tag	UNP D1GCB6
B	-1	GLY	-	expression tag	UNP D1GCB6
B	0	SER	-	expression tag	UNP D1GCB6
B	413	GLY	-	expression tag	UNP D1GCB6
B	414	TRP	-	expression tag	UNP D1GCB6
B	415	SER	-	expression tag	UNP D1GCB6
B	416	HIS	-	expression tag	UNP D1GCB6
B	417	PRO	-	expression tag	UNP D1GCB6
B	418	GLN	-	expression tag	UNP D1GCB6
B	419	PHE	-	expression tag	UNP D1GCB6
B	420	GLU	-	expression tag	UNP D1GCB6
B	421	LYS	-	expression tag	UNP D1GCB6

- Molecule 3 is a protein called C34 Fab, Heavy Chain.

Mol	Chain	Residues	Atoms					AltConf	Trace
3	H	224	Total	C	N	O	S	0	0
			1671	1047	282	334	8		

- Molecule 4 is a protein called C34 Fab, Light Chain.

Mol	Chain	Residues	Atoms					AltConf	Trace
4	L	211	Total	C	N	O	S	0	0
			1631	1022	276	329	4		

- Molecule 5 is 2-acetamido-2-deoxy-beta-D-glucopyranose (CCD ID: NAG) (formula: C₈H₁₅NO₆).

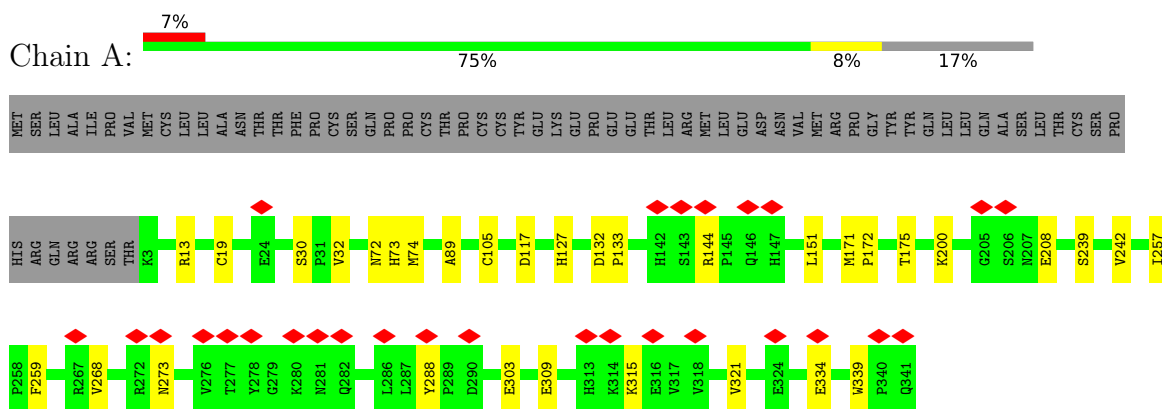


Mol	Chain	Residues	Atoms				AltConf
			Total	C	N	O	
5	A	1	14	8	1	5	0

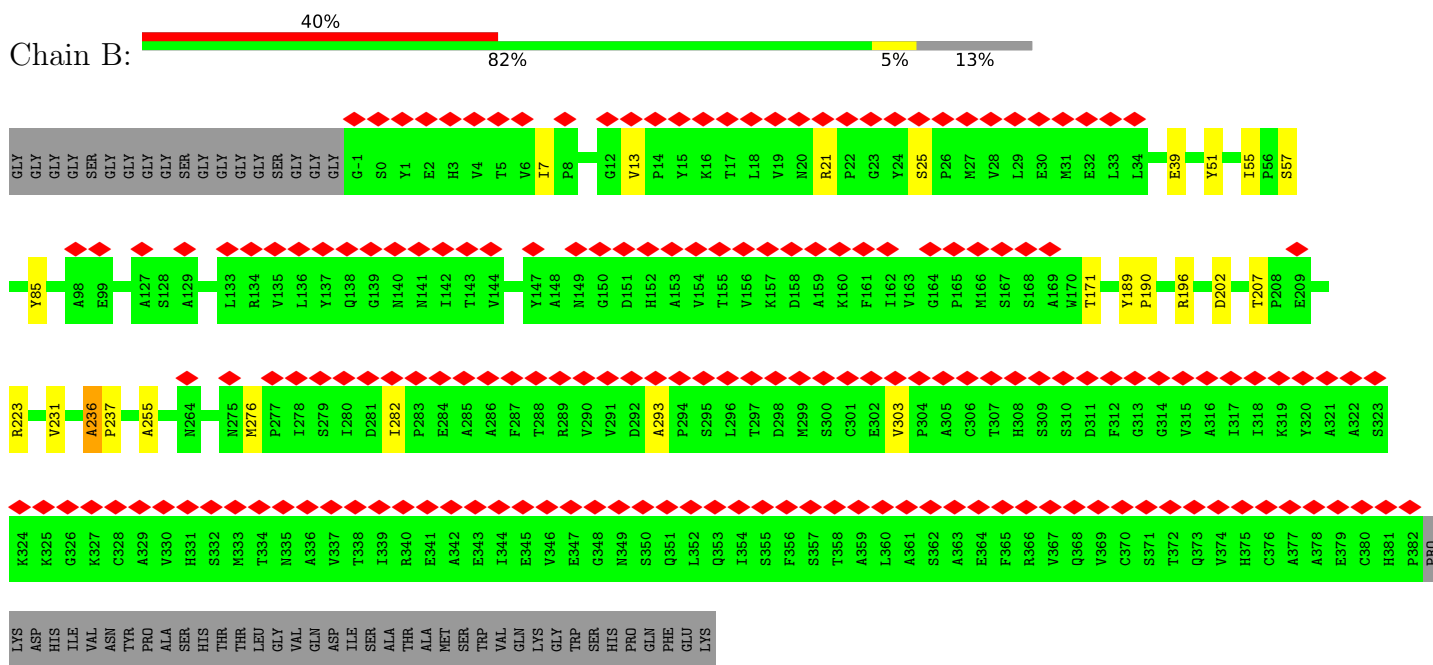
3 Residue-property plots

These plots are drawn for all protein, RNA, DNA and oligosaccharide chains in the entry. The first graphic for a chain summarises the proportions of the various outlier classes displayed in the second graphic. The second graphic shows the sequence view annotated by issues in geometry and atom inclusion in map density. Residues are color-coded according to the number of geometric quality criteria for which they contain at least one outlier: green = 0, yellow = 1, orange = 2 and red = 3 or more. A red diamond above a residue indicates a poor fit to the EM map for this residue (all-atom inclusion < 40%). Stretches of 2 or more consecutive residues without any outlier are shown as a green connector. Residues present in the sample, but not in the model, are shown in grey.

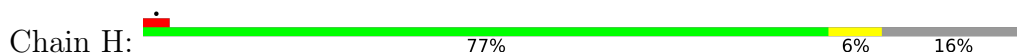
• Molecule 1: CHIKV E2

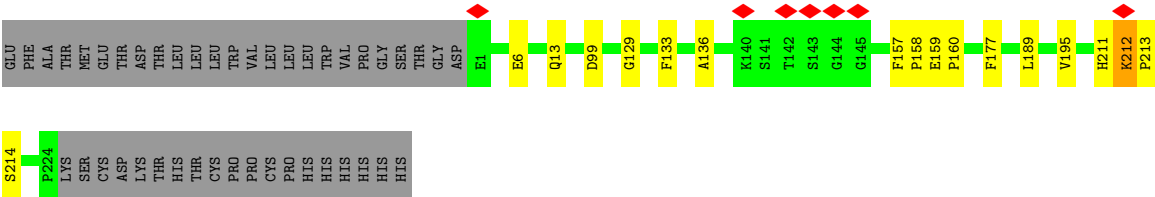


• Molecule 2: CHIKV E1

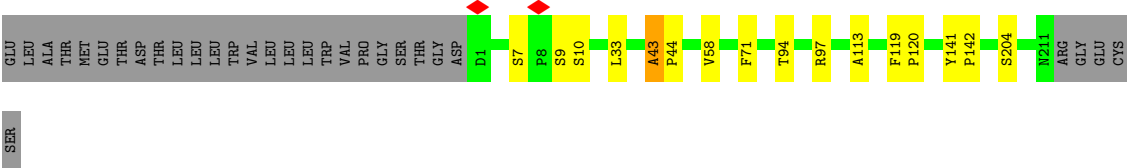
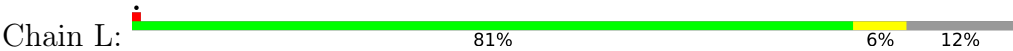


• Molecule 3: C34 Fab, Heavy Chain





● Molecule 4: C34 Fab, Light Chain



4 Experimental information

Property	Value	Source
EM reconstruction method	SINGLE PARTICLE	Depositor
Imposed symmetry	POINT, Not provided	
Number of particles used	1074703	Depositor
Resolution determination method	FSC 0.143 CUT-OFF	Depositor
CTF correction method	NONE	Depositor
Microscope	FEI TITAN KRIOS	Depositor
Voltage (kV)	300	Depositor
Electron dose ($e^-/\text{\AA}^2$)	50	Depositor
Minimum defocus (nm)	1500	Depositor
Maximum defocus (nm)	2000	Depositor
Magnification	Not provided	
Image detector	GATAN K3 BIOCONTINUUM (6k x 4k)	Depositor
Maximum map value	4.453	Depositor
Minimum map value	-2.554	Depositor
Average map value	-0.000	Depositor
Map value standard deviation	0.046	Depositor
Recommended contour level	0.35	Depositor
Map size (\AA)	422.40002, 422.40002, 422.40002	wwPDB
Map dimensions	320, 320, 320	wwPDB
Map angles ($^\circ$)	90.0, 90.0, 90.0	wwPDB
Pixel spacing (\AA)	1.32, 1.32, 1.32	Depositor

5 Model quality [i](#)

5.1 Standard geometry [i](#)

Bond lengths and bond angles in the following residue types are not validated in this section: NAG

The Z score for a bond length (or angle) is the number of standard deviations the observed value is removed from the expected value. A bond length (or angle) with $|Z| > 5$ is considered an outlier worth inspection. RMSZ is the root-mean-square of all Z scores of the bond lengths (or angles).

Mol	Chain	Bond lengths		Bond angles	
		RMSZ	$\# Z > 5$	RMSZ	$\# Z > 5$
1	A	0.57	0/2750	1.05	50/3742 (1.3%)
2	B	0.54	0/2988	1.00	42/4074 (1.0%)
3	H	0.56	0/1711	0.93	14/2329 (0.6%)
4	L	0.55	0/1665	0.94	14/2259 (0.6%)
All	All	0.56	0/9114	0.99	120/12404 (1.0%)

There are no bond length outliers.

All (120) bond angle outliers are listed below:

Mol	Chain	Res	Type	Atoms	Z	Observed(°)	Ideal(°)
4	L	119	PHE	CA-C-N	9.60	126.67	119.66
4	L	119	PHE	C-N-CA	9.60	126.67	119.66
2	B	189	TYR	CA-C-N	9.01	126.15	119.66
2	B	189	TYR	C-N-CA	9.01	126.15	119.66
1	A	172	PRO	CA-C-N	8.01	127.96	120.03
1	A	172	PRO	C-N-CA	8.01	127.96	120.03
3	H	129	GLY	CA-C-N	7.92	127.85	119.85
3	H	129	GLY	C-N-CA	7.92	127.85	119.85
2	B	255	ALA	CA-C-N	7.91	127.81	120.21
2	B	255	ALA	C-N-CA	7.91	127.81	120.21
1	A	30	SER	CA-C-N	7.82	127.46	119.56
1	A	30	SER	C-N-CA	7.82	127.46	119.56
2	B	190	PRO	CA-C-N	7.48	127.44	120.03
2	B	190	PRO	C-N-CA	7.48	127.44	120.03
1	A	273	ASN	CA-C-N	7.39	127.35	120.03
1	A	273	ASN	C-N-CA	7.39	127.35	120.03
1	A	13	ARG	CA-C-N	7.34	127.30	120.03
1	A	13	ARG	C-N-CA	7.34	127.30	120.03
1	A	105	CYS	CA-C-N	7.29	127.24	120.03
1	A	105	CYS	C-N-CA	7.29	127.24	120.03

Continued on next page...

Continued from previous page...

Mol	Chain	Res	Type	Atoms	Z	Observed(°)	Ideal(°)
1	A	133	PRO	CA-C-N	7.26	127.22	120.03
1	A	133	PRO	C-N-CA	7.26	127.22	120.03
1	A	144	ARG	CA-C-N	7.09	127.26	120.31
1	A	144	ARG	C-N-CA	7.09	127.26	120.31
2	B	85	TYR	CA-C-N	7.09	127.01	119.85
2	B	85	TYR	C-N-CA	7.09	127.01	119.85
2	B	223	ARG	CA-C-N	7.03	127.07	119.90
2	B	223	ARG	C-N-CA	7.03	127.07	119.90
2	B	276	MET	CA-C-N	6.95	126.92	119.76
2	B	276	MET	C-N-CA	6.95	126.92	119.76
1	A	268	VAL	CA-C-N	6.88	126.84	120.03
1	A	268	VAL	C-N-CA	6.88	126.84	120.03
1	A	259	PHE	CA-C-N	6.84	126.75	119.85
1	A	259	PHE	C-N-CA	6.84	126.75	119.85
2	B	171	THR	CA-C-N	6.82	126.45	119.56
2	B	171	THR	C-N-CA	6.82	126.45	119.56
3	H	136	ALA	CA-C-N	6.77	126.53	119.76
3	H	136	ALA	C-N-CA	6.77	126.53	119.76
2	B	55	ILE	CA-C-N	6.76	126.94	120.31
2	B	55	ILE	C-N-CA	6.76	126.94	120.31
1	A	239	SER	CA-C-N	6.73	126.87	119.87
1	A	239	SER	C-N-CA	6.73	126.87	119.87
1	A	303	GLU	CA-C-N	6.71	126.34	119.56
1	A	303	GLU	C-N-CA	6.71	126.34	119.56
1	A	19	CYS	CA-C-N	6.66	126.35	119.56
1	A	19	CYS	C-N-CA	6.66	126.35	119.56
4	L	113	ALA	CA-C-N	6.64	126.56	119.85
4	L	113	ALA	C-N-CA	6.64	126.56	119.85
3	H	177	PHE	CA-C-N	6.62	126.58	119.76
3	H	177	PHE	C-N-CA	6.62	126.58	119.76
1	A	321	VAL	CA-C-N	6.62	127.07	120.52
1	A	321	VAL	C-N-CA	6.62	127.07	120.52
4	L	120	PRO	CA-C-N	6.60	126.56	119.76
4	L	120	PRO	C-N-CA	6.60	126.56	119.76
1	A	288	TYR	CA-C-N	6.53	126.45	119.85
1	A	288	TYR	C-N-CA	6.53	126.45	119.85
1	A	175	THR	CA-C-N	6.53	126.48	119.76
1	A	175	THR	C-N-CA	6.53	126.48	119.76
1	A	257	ILE	CA-C-N	6.49	126.95	120.52
1	A	257	ILE	C-N-CA	6.49	126.95	120.52
2	B	236	ALA	CA-C-N	6.48	126.45	119.78
2	B	236	ALA	C-N-CA	6.48	126.45	119.78

Continued on next page...

Continued from previous page...

Mol	Chain	Res	Type	Atoms	Z	Observed(°)	Ideal(°)
3	H	212	LYS	CA-C-N	6.46	126.15	119.56
3	H	212	LYS	C-N-CA	6.46	126.15	119.56
1	A	334	GLU	CA-C-N	6.46	126.42	119.76
1	A	334	GLU	C-N-CA	6.46	126.42	119.76
4	L	58	VAL	CA-C-N	6.46	126.42	120.03
4	L	58	VAL	C-N-CA	6.46	126.42	120.03
4	L	43	ALA	CA-C-N	6.40	126.36	119.76
4	L	43	ALA	C-N-CA	6.40	126.36	119.76
2	B	293	ALA	CA-C-N	6.40	126.16	119.76
2	B	293	ALA	C-N-CA	6.40	126.16	119.76
3	H	133	PHE	CA-C-N	6.40	126.35	119.76
3	H	133	PHE	C-N-CA	6.40	126.35	119.76
1	A	74	MET	CA-C-N	6.39	126.36	119.78
1	A	74	MET	C-N-CA	6.39	126.36	119.78
2	B	282	ILE	CA-C-N	6.39	126.31	119.85
2	B	282	ILE	C-N-CA	6.39	126.31	119.85
2	B	303	VAL	CA-C-N	6.39	126.88	119.47
2	B	303	VAL	C-N-CA	6.39	126.88	119.47
2	B	39	GLU	CA-C-N	6.34	126.25	119.85
2	B	39	GLU	C-N-CA	6.34	126.25	119.85
2	B	7	ILE	CA-C-N	6.34	126.36	119.90
2	B	7	ILE	C-N-CA	6.34	126.36	119.90
2	B	13	VAL	CA-C-N	6.31	126.22	119.85
2	B	13	VAL	C-N-CA	6.31	126.22	119.85
4	L	7	SER	CA-C-N	6.30	126.50	119.32
4	L	7	SER	C-N-CA	6.30	126.50	119.32
2	B	25	SER	CA-C-N	6.28	126.04	119.76
2	B	25	SER	C-N-CA	6.28	126.04	119.76
2	B	196	ARG	CA-C-N	6.27	126.60	119.83
2	B	196	ARG	C-N-CA	6.27	126.60	119.83
1	A	339	TRP	CA-C-N	6.23	126.18	119.76
1	A	339	TRP	C-N-CA	6.23	126.18	119.76
2	B	57	SER	CA-C-N	6.11	125.87	119.76
2	B	57	SER	C-N-CA	6.11	125.87	119.76
4	L	204	SER	CA-C-N	6.09	126.11	119.90
4	L	204	SER	C-N-CA	6.09	126.11	119.90
2	B	231	VAL	CA-C-N	5.91	125.82	119.85
2	B	231	VAL	C-N-CA	5.91	125.82	119.85
2	B	207	THR	CA-C-N	5.89	125.75	119.28
2	B	207	THR	C-N-CA	5.89	125.75	119.28
1	A	151	LEU	CA-C-N	5.79	125.55	119.76
1	A	151	LEU	C-N-CA	5.79	125.55	119.76

Continued on next page...

Continued from previous page...

Mol	Chain	Res	Type	Atoms	Z	Observed(°)	Ideal(°)
1	A	132	ASP	CA-C-N	5.79	126.34	120.38
1	A	132	ASP	C-N-CA	5.79	126.34	120.38
1	A	89	ALA	CA-C-N	5.78	125.79	119.90
1	A	89	ALA	C-N-CA	5.78	125.79	119.90
1	A	242	VAL	CA-C-N	5.63	125.56	119.76
1	A	242	VAL	C-N-CA	5.63	125.56	119.76
1	A	171	MET	CA-C-N	5.58	126.13	120.38
1	A	171	MET	C-N-CA	5.58	126.13	120.38
1	A	127	HIS	CA-C-N	5.57	125.33	119.76
1	A	127	HIS	C-N-CA	5.57	125.33	119.76
3	H	13	GLN	CA-C-N	5.54	125.55	119.90
3	H	13	GLN	C-N-CA	5.54	125.55	119.90
3	H	195	VAL	CA-C-N	5.29	125.58	119.93
3	H	195	VAL	C-N-CA	5.29	125.58	119.93
2	B	21	ARG	CA-C-N	5.21	125.50	119.93
2	B	21	ARG	C-N-CA	5.21	125.50	119.93

There are no chirality outliers.

There are no planarity outliers.

5.2 Too-close contacts ⓘ

In the following table, the Non-H and H(model) columns list the number of non-hydrogen atoms and hydrogen atoms in the chain respectively. The H(added) column lists the number of hydrogen atoms added and optimized by MolProbity. The Clashes column lists the number of clashes within the asymmetric unit, whereas Symm-Clashes lists symmetry-related clashes.

Mol	Chain	Non-H	H(model)	H(added)	Clashes	Symm-Clashes
1	A	2678	0	2594	5	0
2	B	2915	0	2823	3	0
3	H	1671	0	1610	9	0
4	L	1631	0	1598	6	0
5	A	14	0	13	0	0
All	All	8909	0	8638	22	0

The all-atom clashscore is defined as the number of clashes found per 1000 atoms (including hydrogen atoms). The all-atom clashscore for this structure is 1.

All (22) close contacts within the same asymmetric unit are listed below, sorted by their clash magnitude.

Atom-1	Atom-2	Interatomic distance (Å)	Clash overlap (Å)
3:H:211:HIS:HD1	3:H:214:SER:HG	1.45	0.64
4:L:141:TYR:HB3	4:L:142:PRO:HD3	1.91	0.53
3:H:159:GLU:N	3:H:160:PRO:CD	2.72	0.52
3:H:212:LYS:N	3:H:213:PRO:CD	2.72	0.51
4:L:94:THR:O	4:L:97:ARG:NH1	2.43	0.51
2:B:202:ASP:N	2:B:202:ASP:OD1	2.48	0.47
1:A:117:ASP:OD1	1:A:117:ASP:C	2.59	0.45
3:H:99:ASP:OD2	4:L:97:ARG:NH2	2.50	0.45
1:A:32:VAL:HG22	1:A:32:VAL:O	2.16	0.45
4:L:9:SER:OG	4:L:10:SER:N	2.50	0.45
1:A:200:LYS:NZ	1:A:208:GLU:OE2	2.48	0.44
3:H:212:LYS:HB3	3:H:213:PRO:HD3	1.99	0.44
3:H:6:GLU:OE1	3:H:6:GLU:N	2.50	0.43
1:A:309:GLU:OE1	1:A:315:LYS:NZ	2.47	0.43
4:L:33:LEU:HD22	4:L:71:PHE:HB2	2.01	0.42
3:H:157:PHE:HB3	3:H:158:PRO:HD3	2.01	0.42
2:B:51:TYR:C	2:B:51:TYR:CD1	2.97	0.42
3:H:157:PHE:N	3:H:158:PRO:CD	2.83	0.41
2:B:236:ALA:HA	2:B:237:PRO:HD3	1.93	0.41
4:L:43:ALA:HA	4:L:44:PRO:HD3	1.93	0.41
1:A:72:ASN:O	1:A:73:HIS:HB2	2.21	0.40
3:H:211:HIS:ND1	3:H:214:SER:OG	2.37	0.40

There are no symmetry-related clashes.

5.3 Torsion angles ⓘ

5.3.1 Protein backbone ⓘ

In the following table, the Percentiles column shows the percent Ramachandran outliers of the chain as a percentile score with respect to all PDB entries followed by that with respect to all EM entries.

The Analysed column shows the number of residues for which the backbone conformation was analysed, and the total number of residues.

Mol	Chain	Analysed	Favoured	Allowed	Outliers	Percentiles	
1	A	337/406 (83%)	331 (98%)	6 (2%)	0	100	100
2	B	382/441 (87%)	374 (98%)	8 (2%)	0	100	100
3	H	222/268 (83%)	220 (99%)	2 (1%)	0	100	100
4	L	209/241 (87%)	205 (98%)	4 (2%)	0	100	100

Continued on next page...

Continued from previous page...

Mol	Chain	Analysed	Favoured	Allowed	Outliers	Percentiles	
All	All	1150/1356 (85%)	1130 (98%)	20 (2%)	0	100	100

There are no Ramachandran outliers to report.

5.3.2 Protein sidechains ⓘ

In the following table, the Percentiles column shows the percent sidechain outliers of the chain as a percentile score with respect to all PDB entries followed by that with respect to all EM entries.

The Analysed column shows the number of residues for which the sidechain conformation was analysed, and the total number of residues.

Mol	Chain	Analysed	Rotameric	Outliers	Percentiles	
1	A	301/364 (83%)	301 (100%)	0	100	100
2	B	320/357 (90%)	320 (100%)	0	100	100
3	H	185/226 (82%)	184 (100%)	1 (0%)	81	83
4	L	187/213 (88%)	187 (100%)	0	100	100
All	All	993/1160 (86%)	992 (100%)	1 (0%)	87	90

All (1) residues with a non-rotameric sidechain are listed below:

Mol	Chain	Res	Type
3	H	189	LEU

Sometimes sidechains can be flipped to improve hydrogen bonding and reduce clashes. All (5) such sidechains are listed below:

Mol	Chain	Res	Type
1	A	147	HIS
1	A	158	GLN
1	A	184	GLN
2	B	125	HIS
2	B	351	GLN

5.3.3 RNA ⓘ

There are no RNA molecules in this entry.

5.4 Non-standard residues in protein, DNA, RNA chains [i](#)

There are no non-standard protein/DNA/RNA residues in this entry.

5.5 Carbohydrates [i](#)

There are no oligosaccharides in this entry.

5.6 Ligand geometry [i](#)

1 ligand is modelled in this entry.

In the following table, the Counts columns list the number of bonds (or angles) for which Mogul statistics could be retrieved, the number of bonds (or angles) that are observed in the model and the number of bonds (or angles) that are defined in the Chemical Component Dictionary. The Link column lists molecule types, if any, to which the group is linked. The Z score for a bond length (or angle) is the number of standard deviations the observed value is removed from the expected value. A bond length (or angle) with $|Z| > 2$ is considered an outlier worth inspection. RMSZ is the root-mean-square of all Z scores of the bond lengths (or angles).

Mol	Type	Chain	Res	Link	Bond lengths			Bond angles		
					Counts	RMSZ	$\# Z > 2$	Counts	RMSZ	$\# Z > 2$
5	NAG	A	401	1	14,14,15	1.10	1 (7%)	17,19,21	1.15	2 (11%)

In the following table, the Chirals column lists the number of chiral outliers, the number of chiral centers analysed, the number of these observed in the model and the number defined in the Chemical Component Dictionary. Similar counts are reported in the Torsion and Rings columns. '-' means no outliers of that kind were identified.

Mol	Type	Chain	Res	Link	Chirals	Torsions	Rings
5	NAG	A	401	1	-	0/6/23/26	0/1/1/1

All (1) bond length outliers are listed below:

Mol	Chain	Res	Type	Atoms	Z	Observed(Å)	Ideal(Å)
5	A	401	NAG	C1-C2	3.40	1.57	1.52

All (2) bond angle outliers are listed below:

Mol	Chain	Res	Type	Atoms	Z	Observed(°)	Ideal(°)
5	A	401	NAG	C8-C7-N2	2.66	120.53	116.12
5	A	401	NAG	C2-N2-C7	-2.13	120.05	122.90

There are no chirality outliers.

There are no torsion outliers.

There are no ring outliers.

No monomer is involved in short contacts.

5.7 Other polymers

There are no such residues in this entry.

5.8 Polymer linkage issues

There are no chain breaks in this entry.

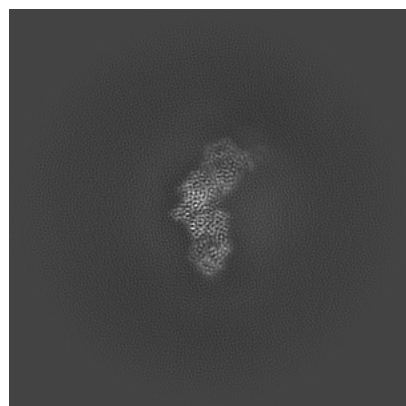
6 Map visualisation [i](#)

This section contains visualisations of the EMDB entry EMD-60966. These allow visual inspection of the internal detail of the map and identification of artifacts.

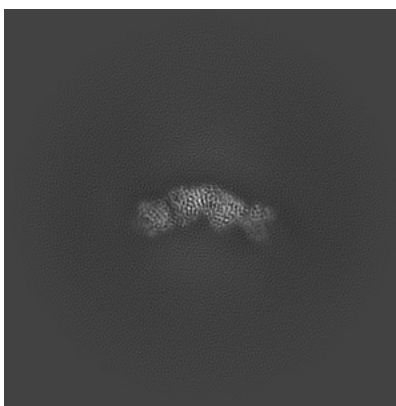
Images derived from a raw map, generated by summing the deposited half-maps, are presented below the corresponding image components of the primary map to allow further visual inspection and comparison with those of the primary map.

6.1 Orthogonal projections [i](#)

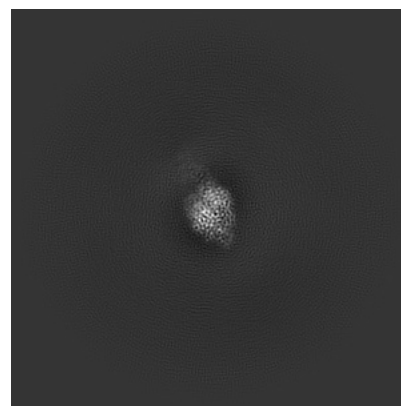
6.1.1 Primary map



X

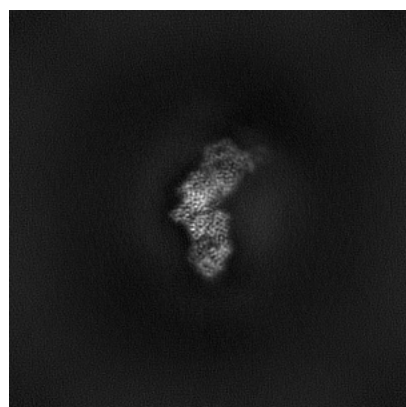


Y

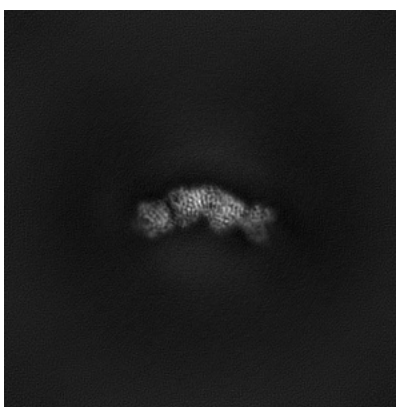


Z

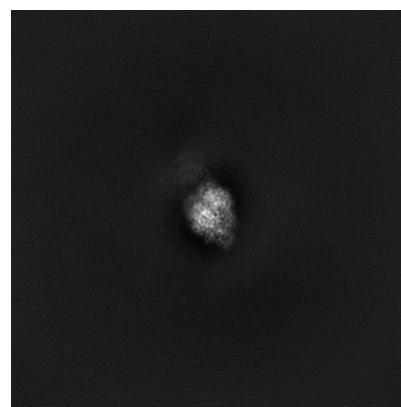
6.1.2 Raw map



X



Y

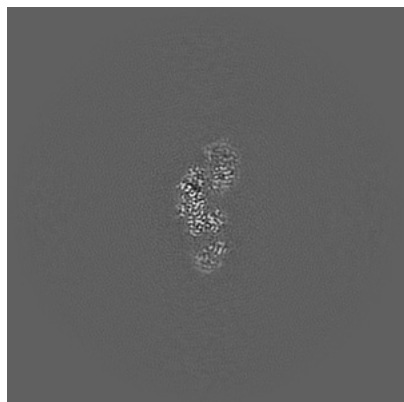


Z

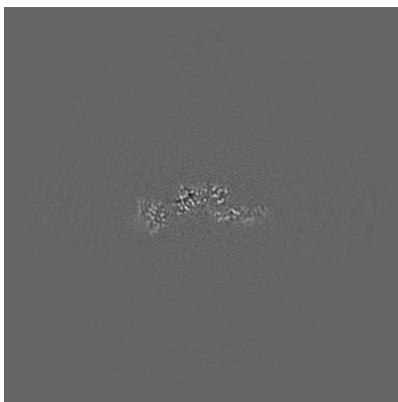
The images above show the map projected in three orthogonal directions.

6.2 Central slices [i](#)

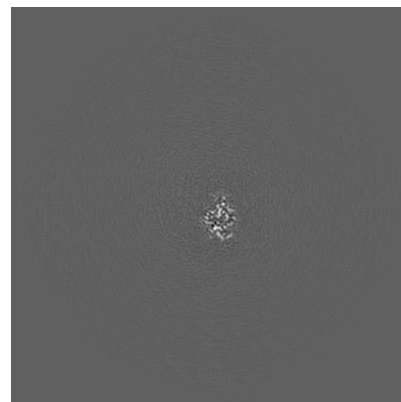
6.2.1 Primary map



X Index: 160

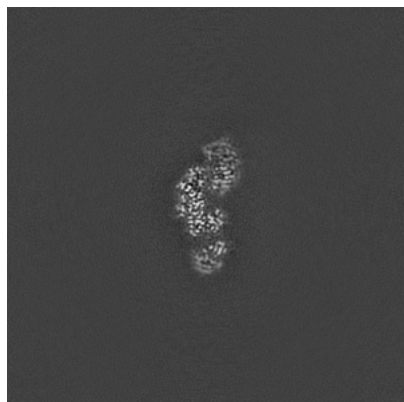


Y Index: 160

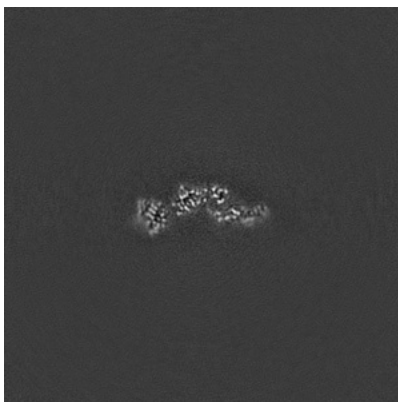


Z Index: 160

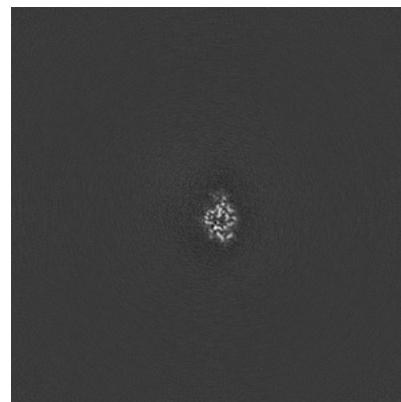
6.2.2 Raw map



X Index: 160



Y Index: 160

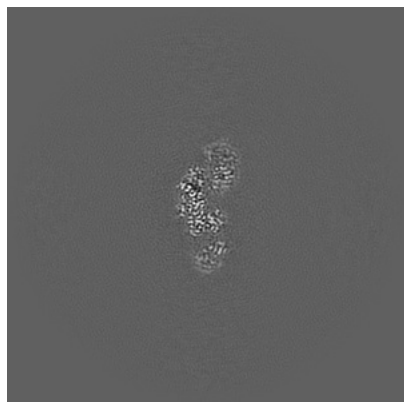


Z Index: 160

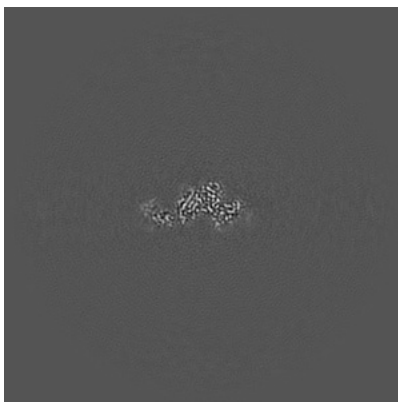
The images above show central slices of the map in three orthogonal directions.

6.3 Largest variance slices [i](#)

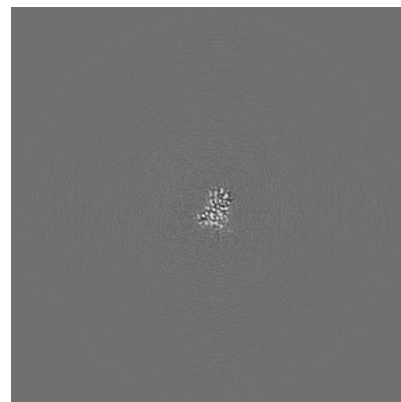
6.3.1 Primary map



X Index: 160

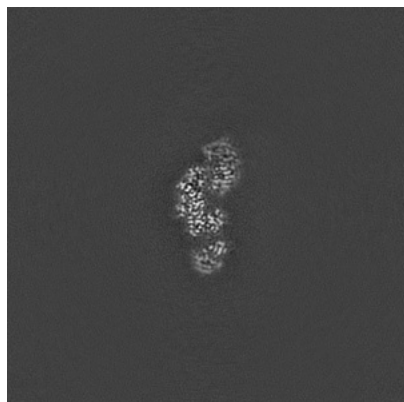


Y Index: 154

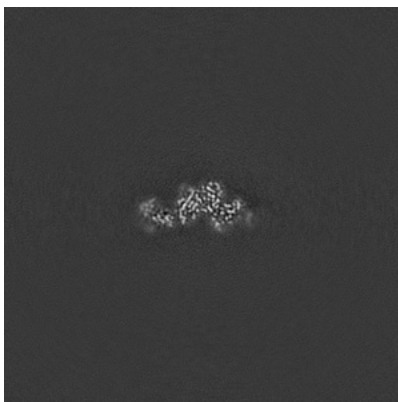


Z Index: 148

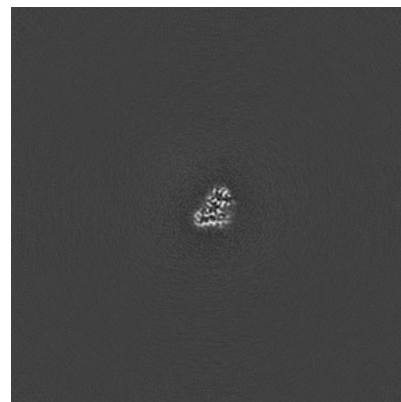
6.3.2 Raw map



X Index: 160



Y Index: 154

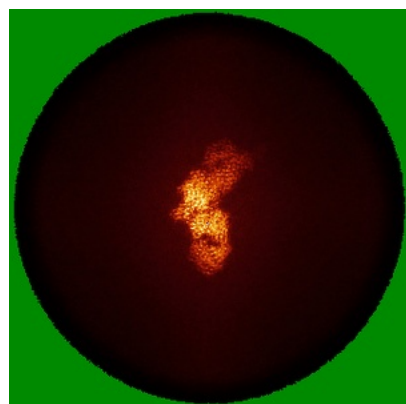


Z Index: 144

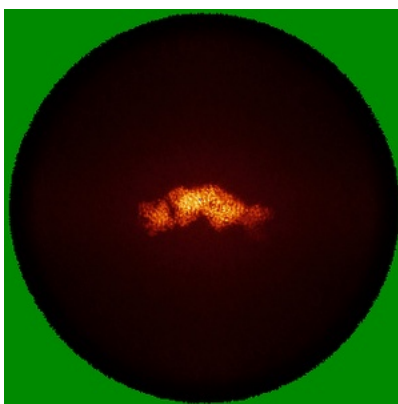
The images above show the largest variance slices of the map in three orthogonal directions.

6.4 Orthogonal standard-deviation projections (False-color) [i](#)

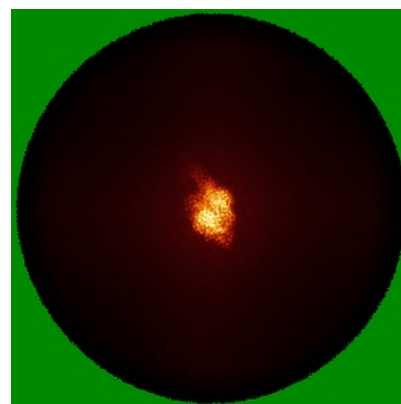
6.4.1 Primary map



X

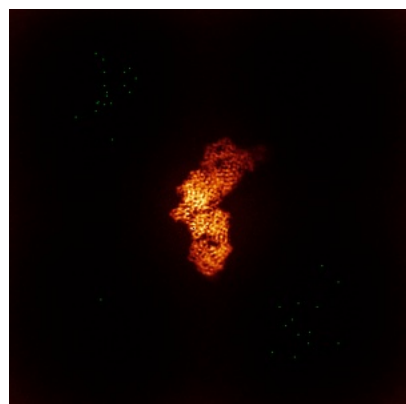


Y

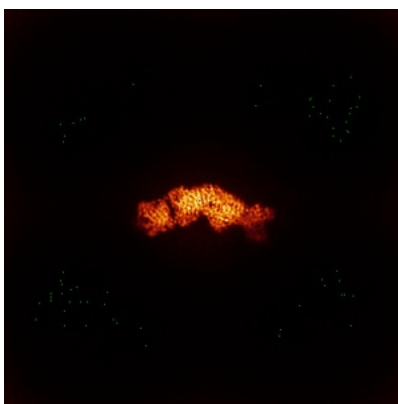


Z

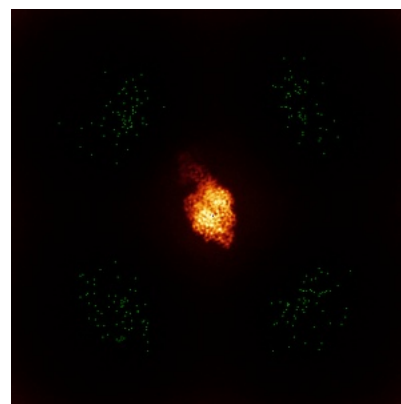
6.4.2 Raw map



X



Y

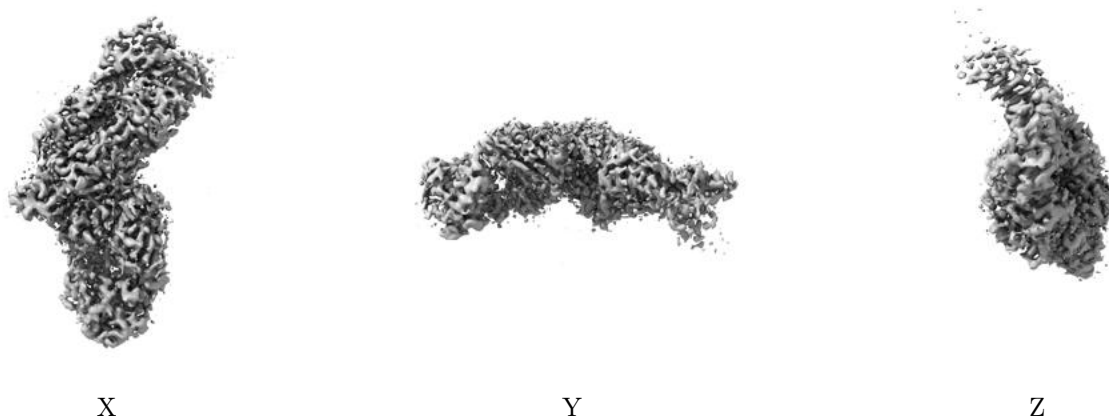


Z

The images above show the map standard deviation projections with false color in three orthogonal directions. Minimum values are shown in green, max in blue, and dark to light orange shades represent small to large values respectively.

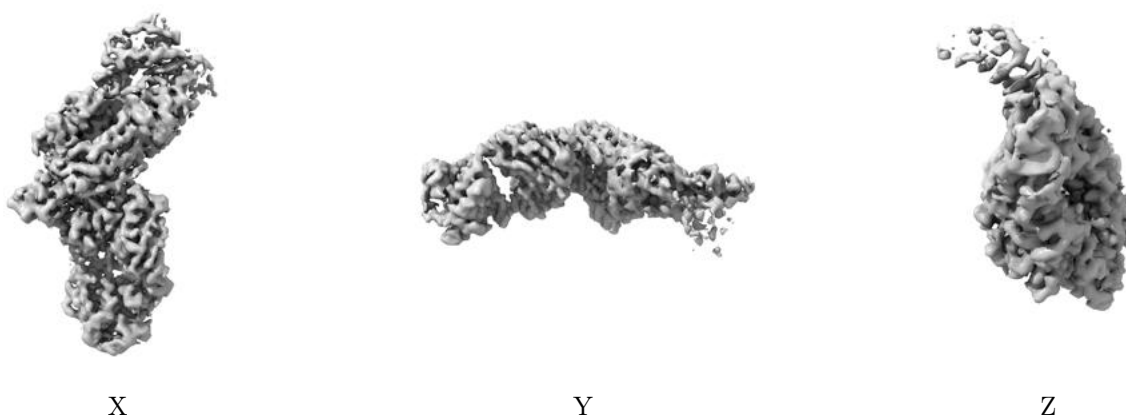
6.5 Orthogonal surface views [i](#)

6.5.1 Primary map



The images above show the 3D surface view of the map at the recommended contour level 0.35. These images, in conjunction with the slice images, may facilitate assessment of whether an appropriate contour level has been provided.

6.5.2 Raw map



These images show the 3D surface of the raw map. The raw map's contour level was selected so that its surface encloses the same volume as the primary map does at its recommended contour level.

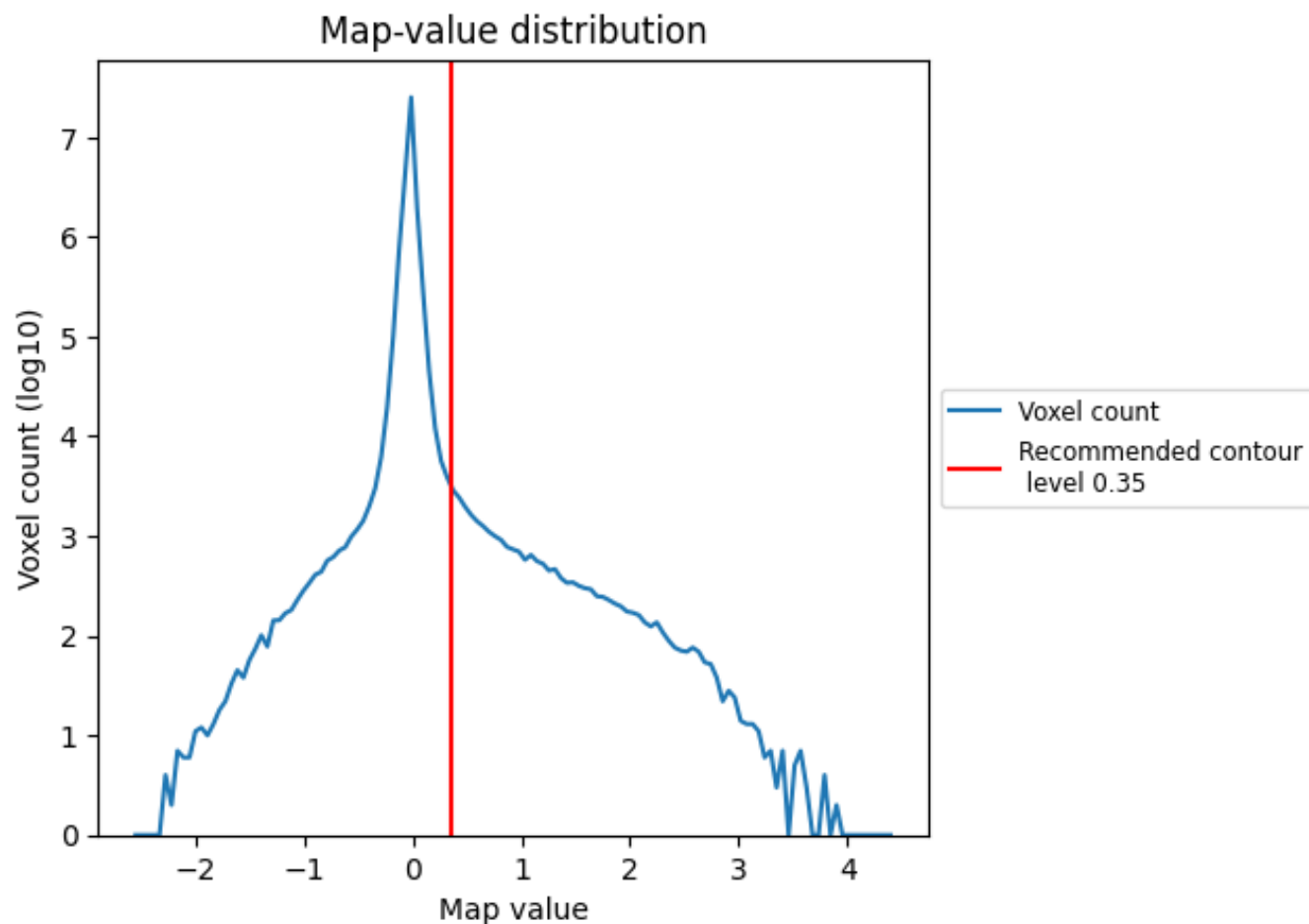
6.6 Mask visualisation [i](#)

This section was not generated. No masks/segmentation were deposited.

7 Map analysis [i](#)

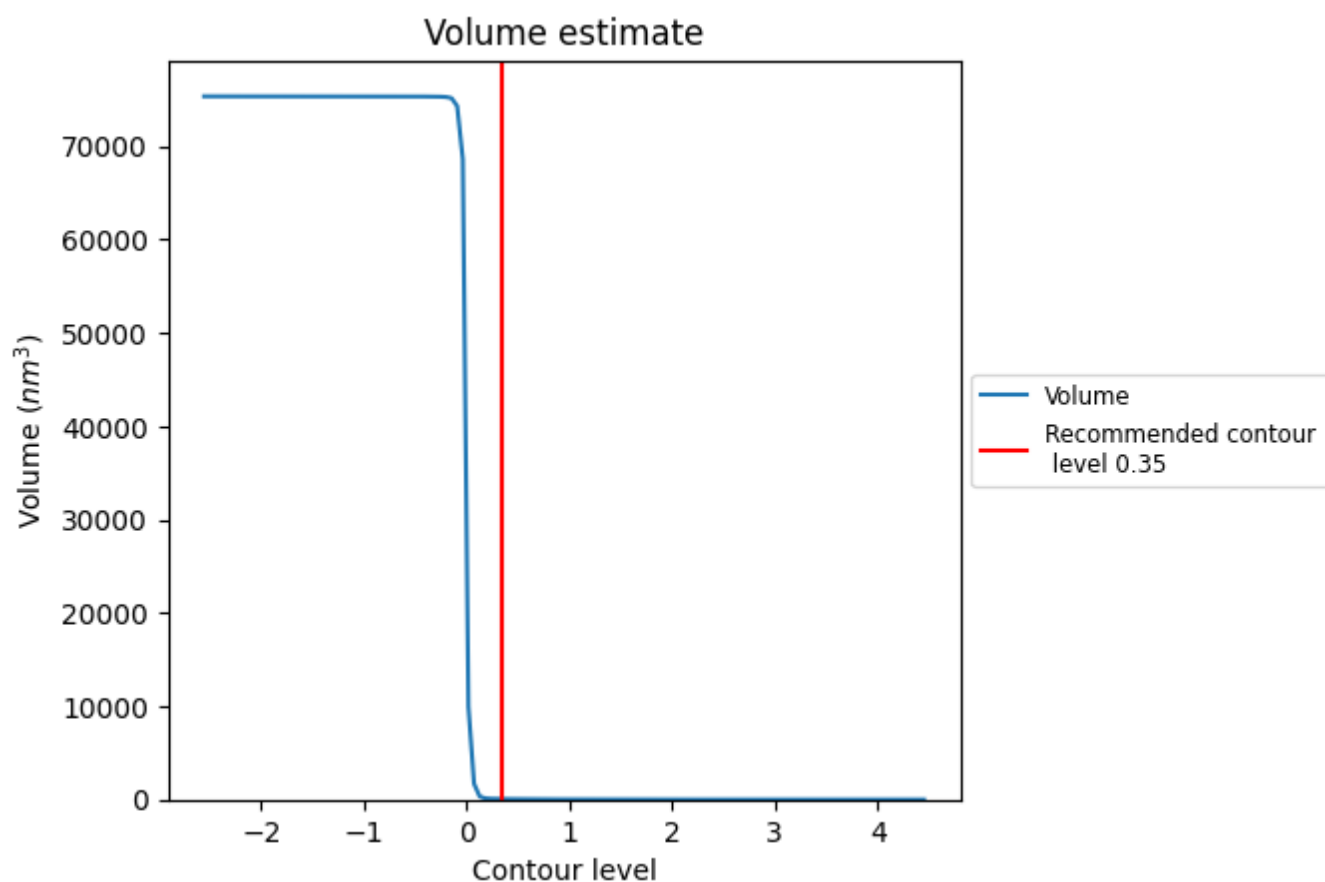
This section contains the results of statistical analysis of the map.

7.1 Map-value distribution [i](#)



The map-value distribution is plotted in 128 intervals along the x-axis. The y-axis is logarithmic. A spike in this graph at zero usually indicates that the volume has been masked.

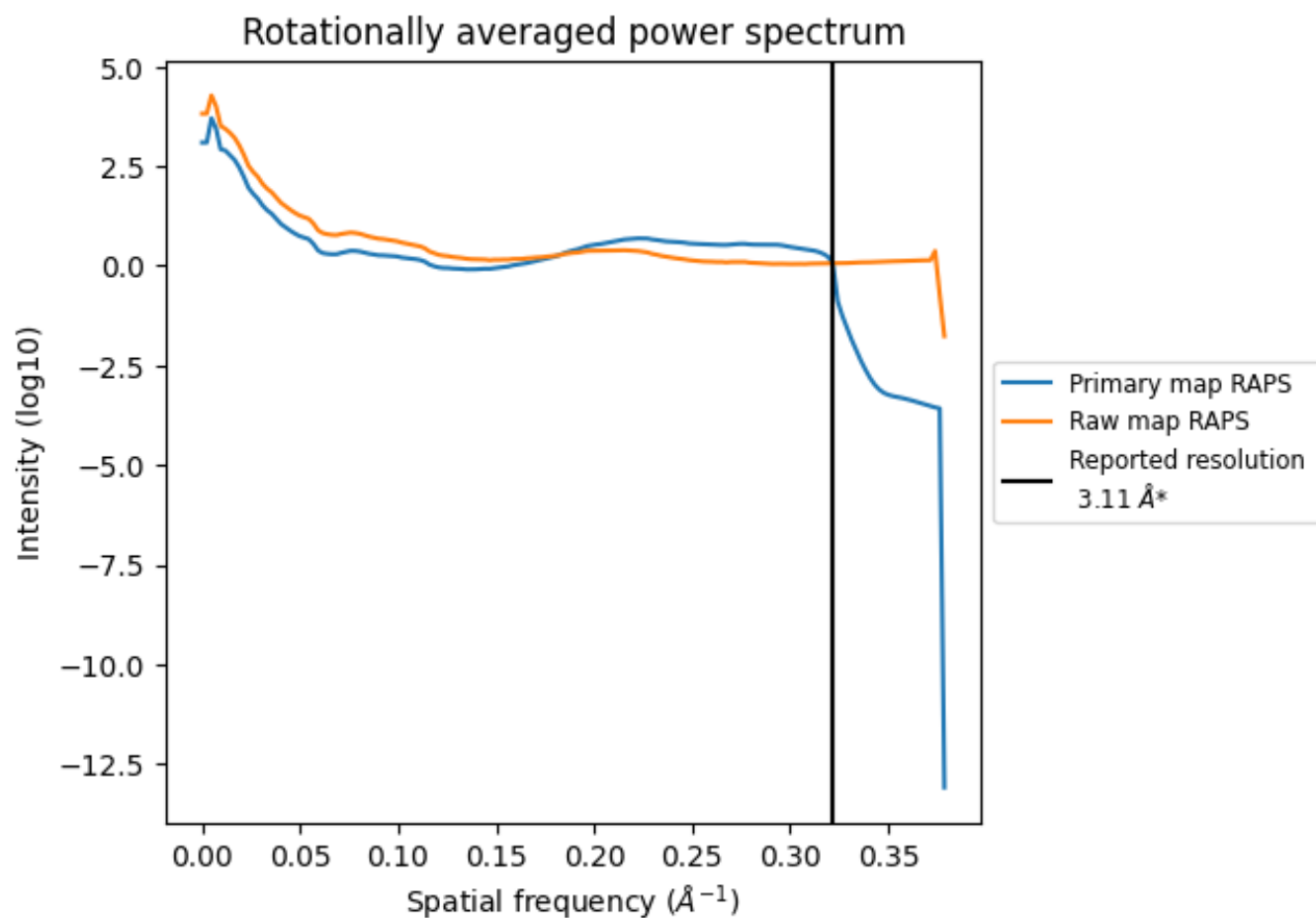
7.2 Volume estimate [i](#)



The volume at the recommended contour level is 60 nm^3 ; this corresponds to an approximate mass of 54 kDa.

The volume estimate graph shows how the enclosed volume varies with the contour level. The recommended contour level is shown as a vertical line and the intersection between the line and the curve gives the volume of the enclosed surface at the given level.

7.3 Rotationally averaged power spectrum ⓘ

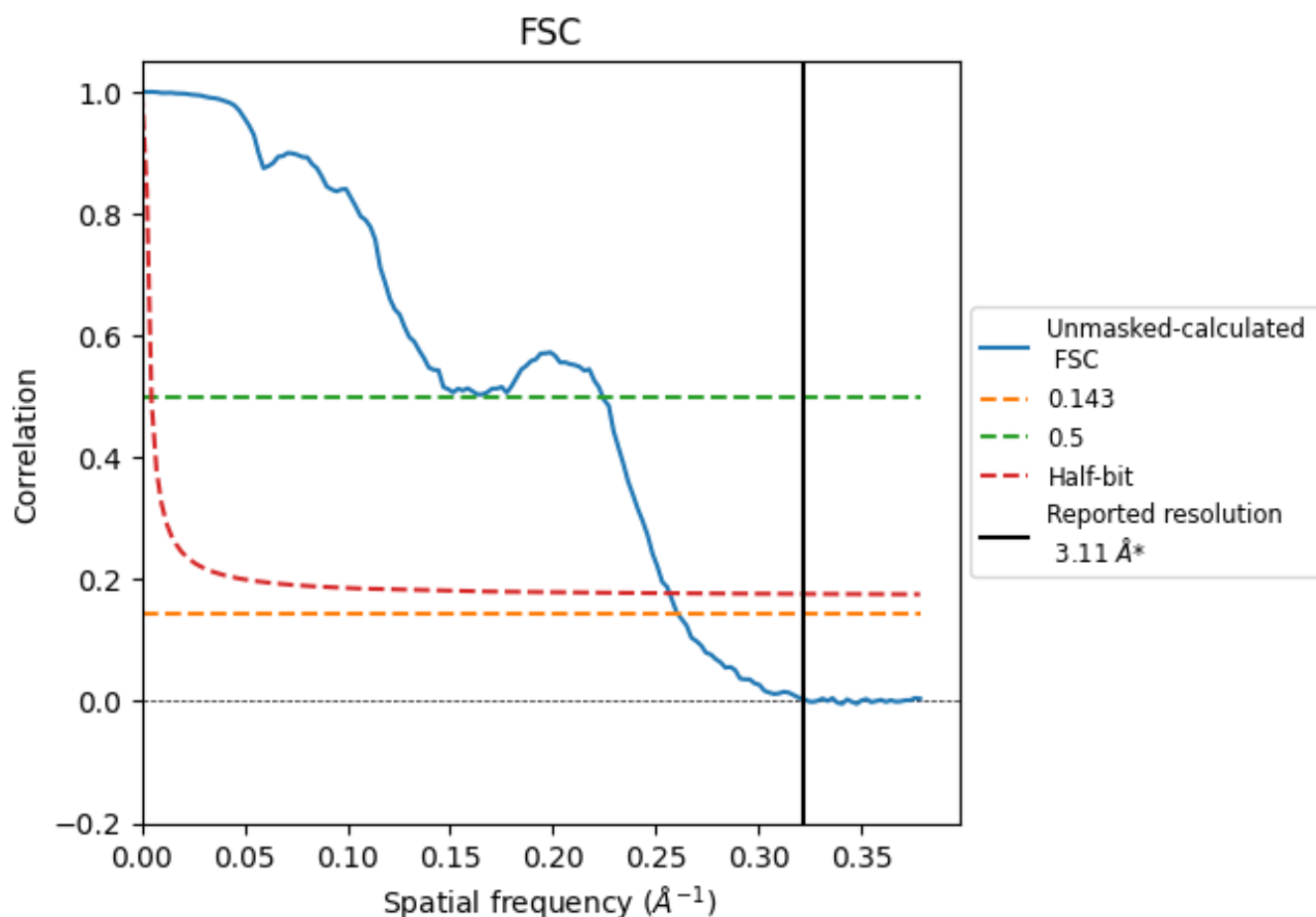


*Reported resolution corresponds to spatial frequency of 0.322 \AA^{-1}

8 Fourier-Shell correlation [i](#)

Fourier-Shell Correlation (FSC) is the most commonly used method to estimate the resolution of single-particle and subtomogram-averaged maps. The shape of the curve depends on the imposed symmetry, mask and whether or not the two 3D reconstructions used were processed from a common reference. The reported resolution is shown as a black line. A curve is displayed for the half-bit criterion in addition to lines showing the 0.143 gold standard cut-off and 0.5 cut-off.

8.1 FSC [i](#)



*Reported resolution corresponds to spatial frequency of 0.322 \AA^{-1}

8.2 Resolution estimates [i](#)

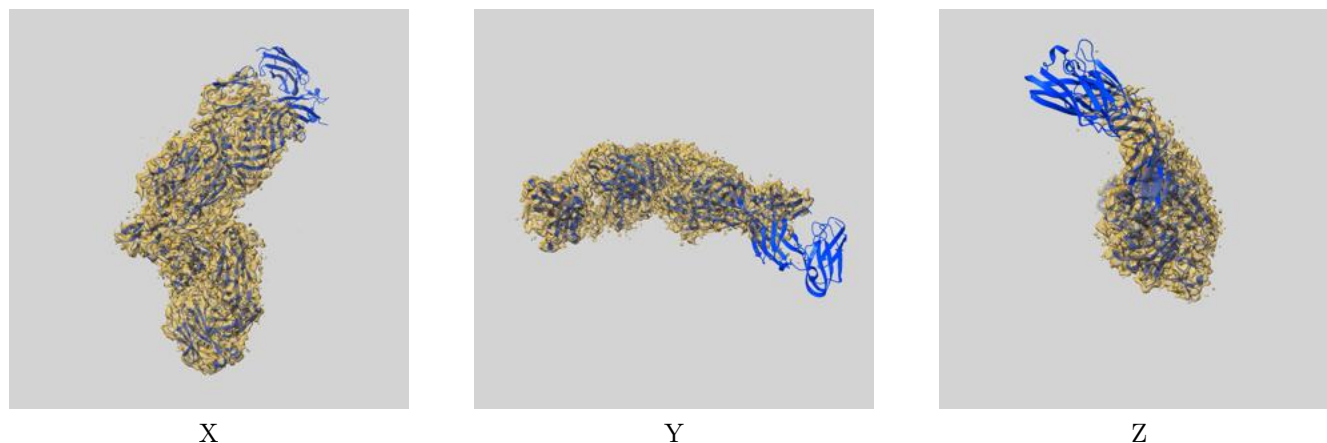
Resolution estimate (Å)	Estimation criterion (FSC cut-off)		
	0.143	0.5	Half-bit
Reported by author	3.11	-	-
Author-provided FSC curve	-	-	-
Unmasked-calculated*	3.83	4.46	3.89

*Resolution estimate based on FSC curve calculated by comparison of deposited half-maps. The value from deposited half-maps intersecting FSC 0.143 CUT-OFF 3.83 differs from the reported value 3.11 by more than 10 %

9 Map-model fit [i](#)

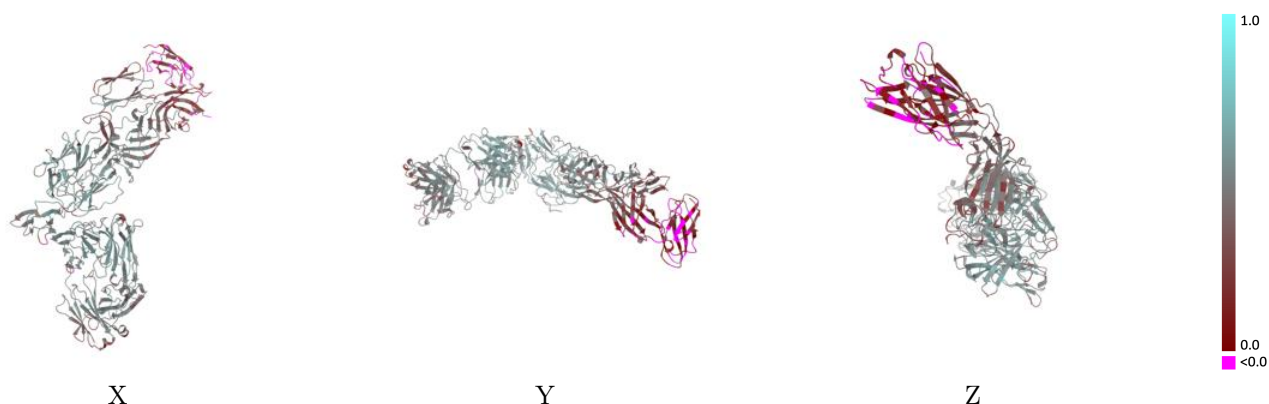
This section contains information regarding the fit between EMDB map EMD-60966 and PDB model 9IXA. Per-residue inclusion information can be found in [section 3](#) on [page 6](#).

9.1 Map-model overlay [i](#)



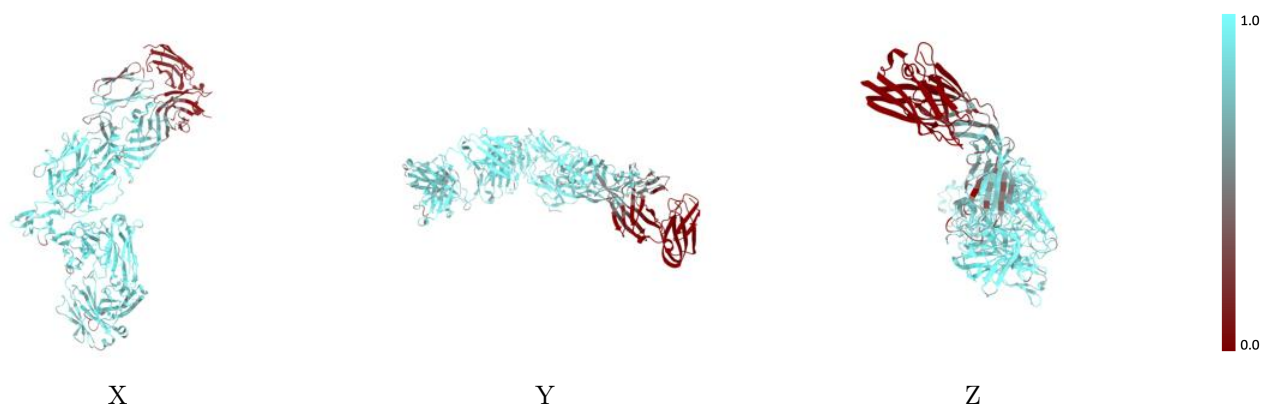
The images above show the 3D surface view of the map at the recommended contour level 0.35 at 50% transparency in yellow overlaid with a ribbon representation of the model coloured in blue. These images allow for the visual assessment of the quality of fit between the atomic model and the map.

9.2 Q-score mapped to coordinate model [i](#)



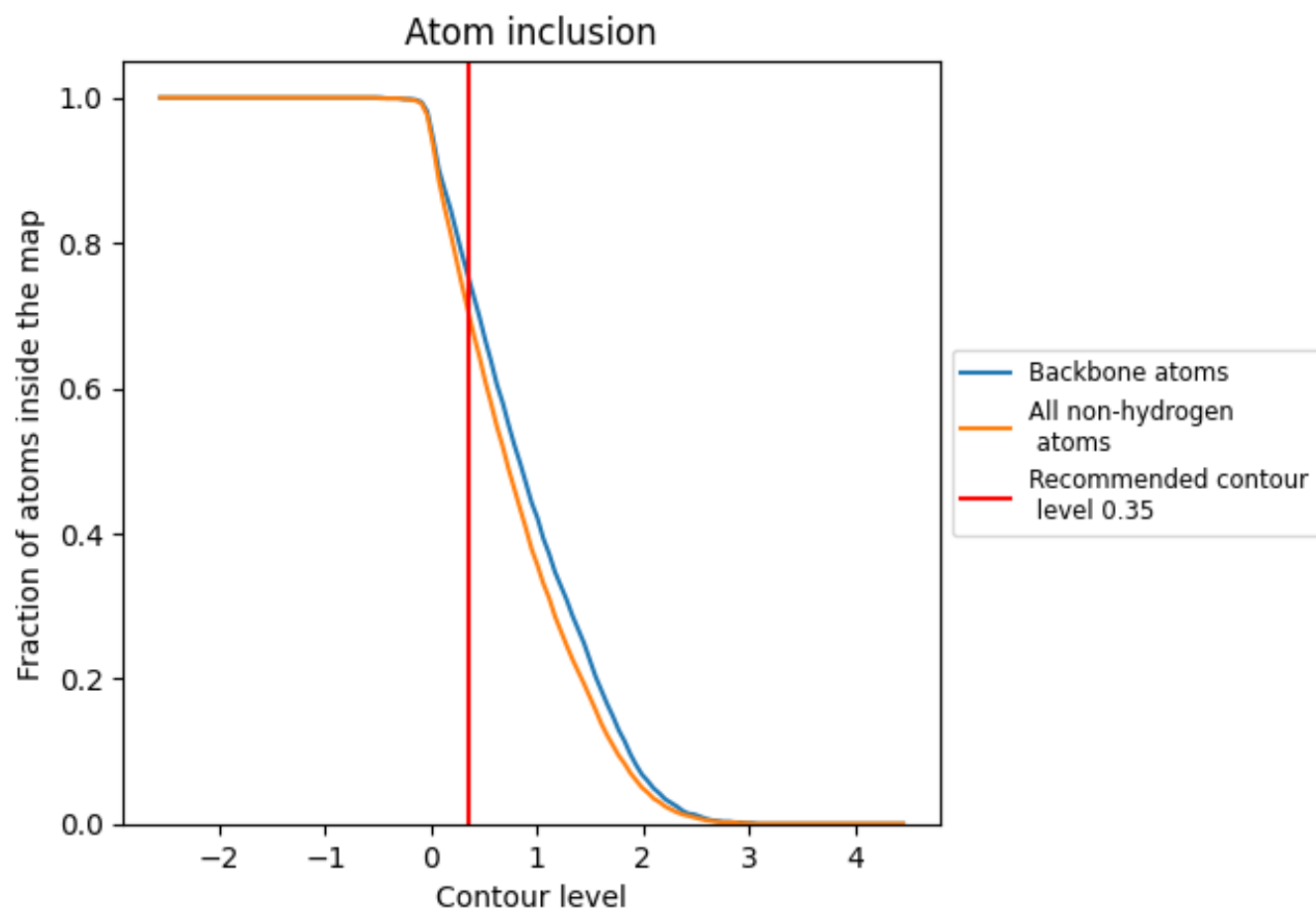
The images above show the model with each residue coloured according to its Q-score. This shows their resolvability in the map with higher Q-score values reflecting better resolvability. Please note: Q-score is calculating the resolvability of atoms, and thus high values are only expected at resolutions at which atoms can be resolved. Low Q-score values may therefore be expected for many entries.

9.3 Atom inclusion mapped to coordinate model [i](#)



The images above show the model with each residue coloured according to its atom inclusion. This shows to what extent they are inside the map at the recommended contour level (0.35).

9.4 Atom inclusion [i](#)



At the recommended contour level, 75% of all backbone atoms, 71% of all non-hydrogen atoms, are inside the map.

9.5 Map-model fit summary ⓘ

The table lists the average atom inclusion at the recommended contour level (0.35) and Q-score for the entire model and for each chain.

Chain	Atom inclusion	Q-score
All	<div></div> 0.7060	<div></div> 0.4320
A	<div></div> 0.7880	<div></div> 0.4740
B	<div></div> 0.4760	<div></div> 0.3210
H	<div></div> 0.8530	<div></div> 0.5010
L	<div></div> 0.8300	<div></div> 0.4890

