



Full wwPDB EM Validation Report ⓘ

Mar 24, 2026 – 09:38 PM UTC

PDB ID : 9I2H / pdb_00009i2h
EMDB ID : EMD-52585
Title : A 3.3 angstrom cryo-EM structure of an engineered high-affinity human prothrombinase complex
Authors : Huntington, J.A.; Faille, A.; Ustok, F.I.
Deposited on : 2025-01-20
Resolution : 3.28 Å(reported)

This is a Full wwPDB EM Validation Report for a publicly released PDB entry.

We welcome your comments at validation@mail.wwpdb.org

A user guide is available at

<https://www.wwpdb.org/validation/2017/EMValidationReportHelp>
with specific help available everywhere you see the ⓘ symbol.

The types of validation reports are described at

<http://www.wwpdb.org/validation/2017/FAQs#types>.

The following versions of software and data (see [references ⓘ](#)) were used in the production of this report:

EMDB validation analysis : 0.0.1.dev132
Mogul : 2022.3.0, CSD as543be (2022)
MolProbity : 4-5-2 with Phenix2.0
Buster-report : wwPDB partial adaption of 1.1.7 (2018)
Percentile statistics : 20250101.v01 (using entries in the PDB archive January 1st 2025)
EM percentile statistics : 202505.v01 (Using data in the EMDB archive up until May 2025)
MapQ : 1.9.13
Ideal geometry (proteins) : Engh & Huber (2001)
Ideal geometry (DNA, RNA) : Parkinson et al. (1996)
Validation Pipeline (wwPDB-VP) : 2.49

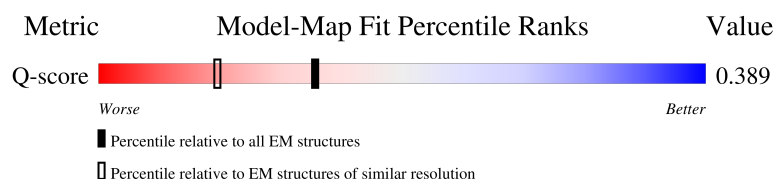
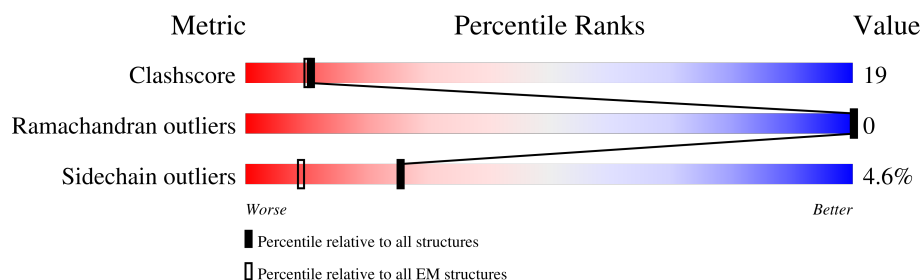
1 Overall quality at a glance

The following experimental techniques were used to determine the structure:

ELECTRON MICROSCOPY

The reported resolution of this entry is 3.28 Å.

Percentile scores (ranging between 0-100) for global validation metrics of the entry are shown in the following graphic. The table shows the number of entries on which the scores are based.



Metric	Whole archive (#Entries)	EM structures (#Entries)	Similar EM resolution (#Entries, resolution range(Å))
Clashscore	229148	23984	-
Ramachandran outliers	224038	23583	-
Sidechain outliers	223484	23102	-
Q-score	-	25397	14492 (2.78 - 3.78)

The table below summarises the geometric issues observed across the polymeric chains and their fit to the map. The red, orange, yellow and green segments of the bar indicate the fraction of residues that contain outliers for ≥ 3 , 2, 1 and 0 types of geometric quality criteria respectively. A grey segment represents the fraction of residues that are not modelled. The numeric value for each fraction is indicated below the corresponding segment, with a dot representing fractions $\leq 5\%$. The upper red bar (where present) indicates the fraction of residues that have poor fit to the EM map (all-atom inclusion $< 40\%$). The numeric value is given above the bar.

Mol	Chain	Length	Quality of chain
1	H	254	
2	L	139	
3	A	709	
4	B	651	

Continued on next page...

Continued from previous page...

Mol	Chain	Length	Quality of chain
5	X	6	<div><div></div><div>17%</div><div>50%</div><div>33%</div></div>
6	C	5	<div><div></div><div>60%</div><div>40%</div></div>
7	D	7	<div><div></div><div>71%</div><div>29%</div></div>
8	E	2	<div><div></div><div>50%</div><div>50%</div></div>

2 Entry composition

There are 12 unique types of molecules in this entry. The entry contains 13917 atoms, of which 0 are hydrogens and 0 are deuteriums.

In the tables below, the AltConf column contains the number of residues with at least one atom in alternate conformation and the Trace column contains the number of residues modelled with at most 2 atoms.

- Molecule 1 is a protein called Activated factor Xa heavy chain.

Mol	Chain	Residues	Atoms					AltConf	Trace
1	H	234	Total	C	N	O	S	0	0
			1868	1174	331	348	15		

There are 10 discrepancies between the modelled and reference sequences:

Chain	Residue	Modelled	Actual	Comment	Reference
H	129	ASN	GLU	engineered mutation	UNP P00742
H	130	GLU	SER	engineered mutation	UNP P00742
H	132	LYS	THR	engineered mutation	UNP P00742
H	134	ASP	LYS	engineered mutation	UNP P00742
H	166	HIS	ASN	engineered mutation	UNP P00742
H	169	MET	LYS	engineered mutation	UNP P00742
H	173	ASP	SER	engineered mutation	UNP P00742
H	175	ARG	ILE	engineered mutation	UNP P00742
H	233	ARG	ALA	engineered mutation	UNP P00742
H	239	LYS	ASP	engineered mutation	UNP P00742

- Molecule 2 is a protein called Factor X light chain.

Mol	Chain	Residues	Atoms					AltConf	Trace
2	L	137	Total	C	N	O	S	0	0
			1070	651	183	219	17		

There are 7 discrepancies between the modelled and reference sequences:

Chain	Residue	Modelled	Actual	Comment	Reference
L	90	ARG	SER	engineered mutation	UNP P00742
L	91	ALA	LEU	engineered mutation	UNP P00742
L	92	PHE	ASP	engineered mutation	UNP P00742
L	101	LYS	HIS	engineered mutation	UNP P00742
L	102	ARG	GLU	engineered mutation	UNP P00742
L	103	VAL	GLU	engineered mutation	UNP P00742
L	105	SER	ASN	engineered mutation	UNP P00742

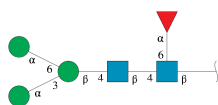
- Molecule 3 is a protein called Coagulation factor V heavy chain.

Mol	Chain	Residues	Atoms					AltConf	Trace
3	A	670	Total	C	N	O	S	0	0
			5406	3431	910	1036	29		

- Molecule 4 is a protein called Coagulation factor V light chain.

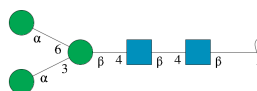
Mol	Chain	Residues	Atoms					AltConf	Trace
4	B	651	Total	C	N	O	S	0	0
			5305	3376	916	988	25		

- Molecule 5 is an oligosaccharide called alpha-D-mannopyranose-(1-3)-[alpha-D-mannopyranose-(1-6)]beta-D-mannopyranose-(1-4)-2-acetamido-2-deoxy-beta-D-glucopyranose-(1-4)-[alpha-L-fucopyranose-(1-6)]2-acetamido-2-deoxy-beta-D-glucopyranose.



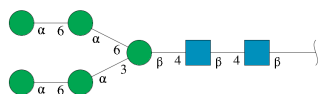
Mol	Chain	Residues	Atoms				AltConf	Trace
5	X	6	Total	C	N	O	0	0
			71	40	2	29		

- Molecule 6 is an oligosaccharide called alpha-D-mannopyranose-(1-3)-[alpha-D-mannopyranose-(1-6)]beta-D-mannopyranose-(1-4)-2-acetamido-2-deoxy-beta-D-glucopyranose-(1-4)-2-acetamido-2-deoxy-beta-D-glucopyranose.



Mol	Chain	Residues	Atoms				AltConf	Trace
6	C	5	Total	C	N	O	0	0
			61	34	2	25		

- Molecule 7 is an oligosaccharide called alpha-D-mannopyranose-(1-6)-alpha-D-mannopyranose-(1-3)-[alpha-D-mannopyranose-(1-6)-alpha-D-mannopyranose-(1-6)]beta-D-mannopyranose-(1-4)-2-acetamido-2-deoxy-beta-D-glucopyranose-(1-4)-2-acetamido-2-deoxy-beta-D-glucopyranose.



Mol	Chain	Residues	Atoms				AltConf	Trace
7	D	7	Total	C	N	O	0	0
			83	46	2	35		

- Molecule 8 is an oligosaccharide called alpha-L-fucopyranose-(1-6)-2-acetamido-2-deoxy-beta-D-glucopyranose.



Mol	Chain	Residues	Atoms				AltConf	Trace
8	E	2	Total	C	N	O	0	0
			24	14	1	9		

- Molecule 9 is CALCIUM ION (CCD ID: CA) (formula: Ca).

Mol	Chain	Residues	Atoms		AltConf
9	H	1	Total	Ca	0
			1	1	
9	A	1	Total	Ca	0
			1	1	

- Molecule 10 is SODIUM ION (CCD ID: NA) (formula: Na).

Mol	Chain	Residues	Atoms		AltConf
10	H	1	Total	Na	0
			1	1	

- Molecule 11 is L-alpha-glutamyl-N-[(1S)-4-[[amino(iminio)methyl]amino]-1-[(1S)-2-chloro-1-hydroxyethyl]butyl]glycinamide (CCD ID: 0GJ) (formula: C₁₄H₂₈ClN₆O₅).



Mol	Chain	Residues	Atoms				AltConf
11	H	1	Total 25	C 14	N 6	O 5	0

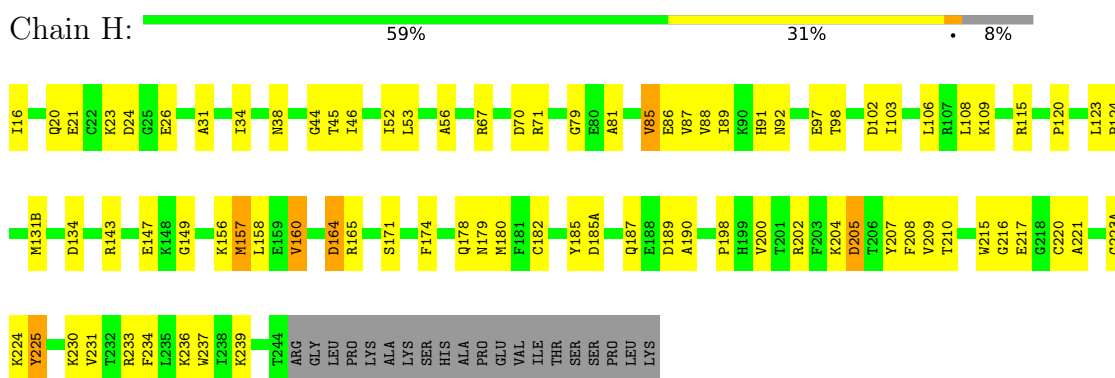
- Molecule 12 is COPPER (II) ION (CCD ID: CU) (formula: Cu).

Mol	Chain	Residues	Atoms	AltConf
12	B	1	Total Cu 1 1	0

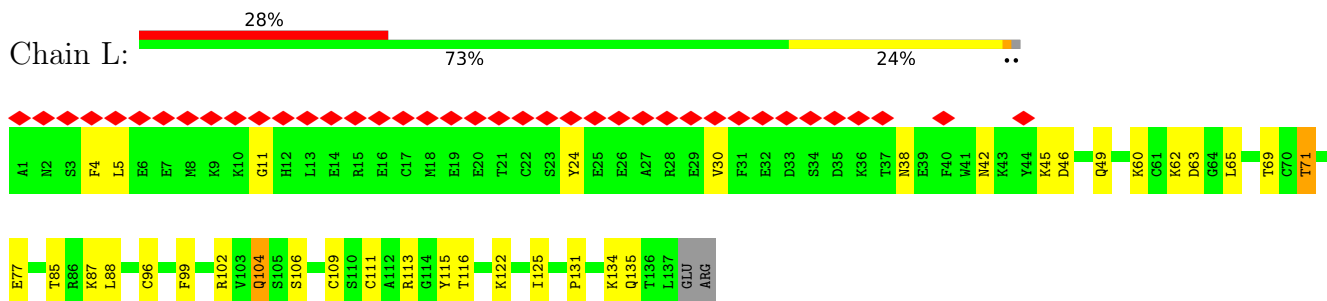
3 Residue-property plots

These plots are drawn for all protein, RNA, DNA and oligosaccharide chains in the entry. The first graphic for a chain summarises the proportions of the various outlier classes displayed in the second graphic. The second graphic shows the sequence view annotated by issues in geometry and atom inclusion in map density. Residues are color-coded according to the number of geometric quality criteria for which they contain at least one outlier: green = 0, yellow = 1, orange = 2 and red = 3 or more. A red diamond above a residue indicates a poor fit to the EM map for this residue (all-atom inclusion < 40%). Stretches of 2 or more consecutive residues without any outlier are shown as a green connector. Residues present in the sample, but not in the model, are shown in grey.

- Molecule 1: Activated factor Xa heavy chain

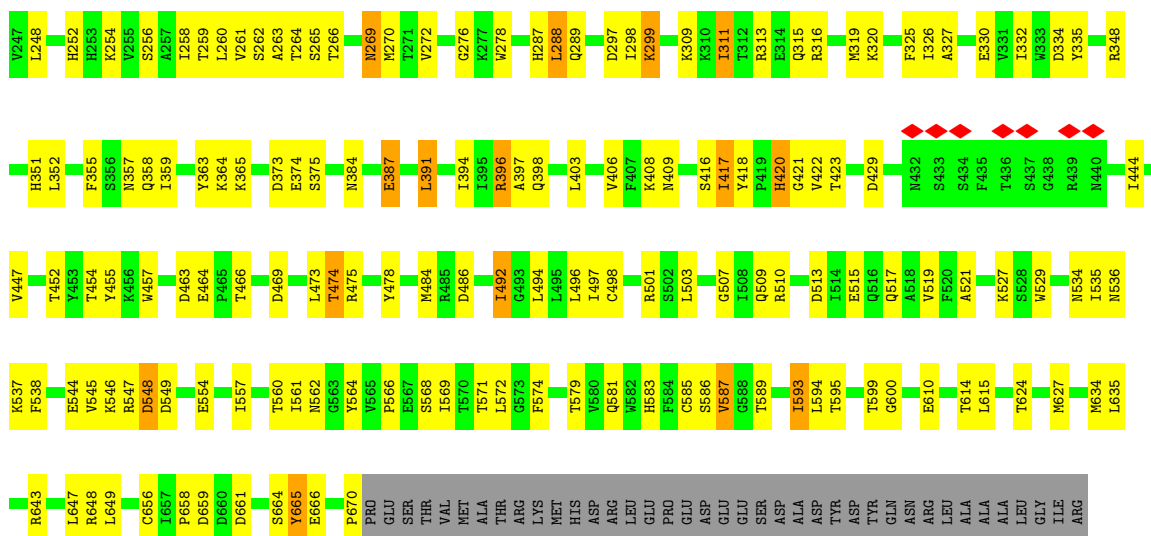


- Molecule 2: Factor X light chain



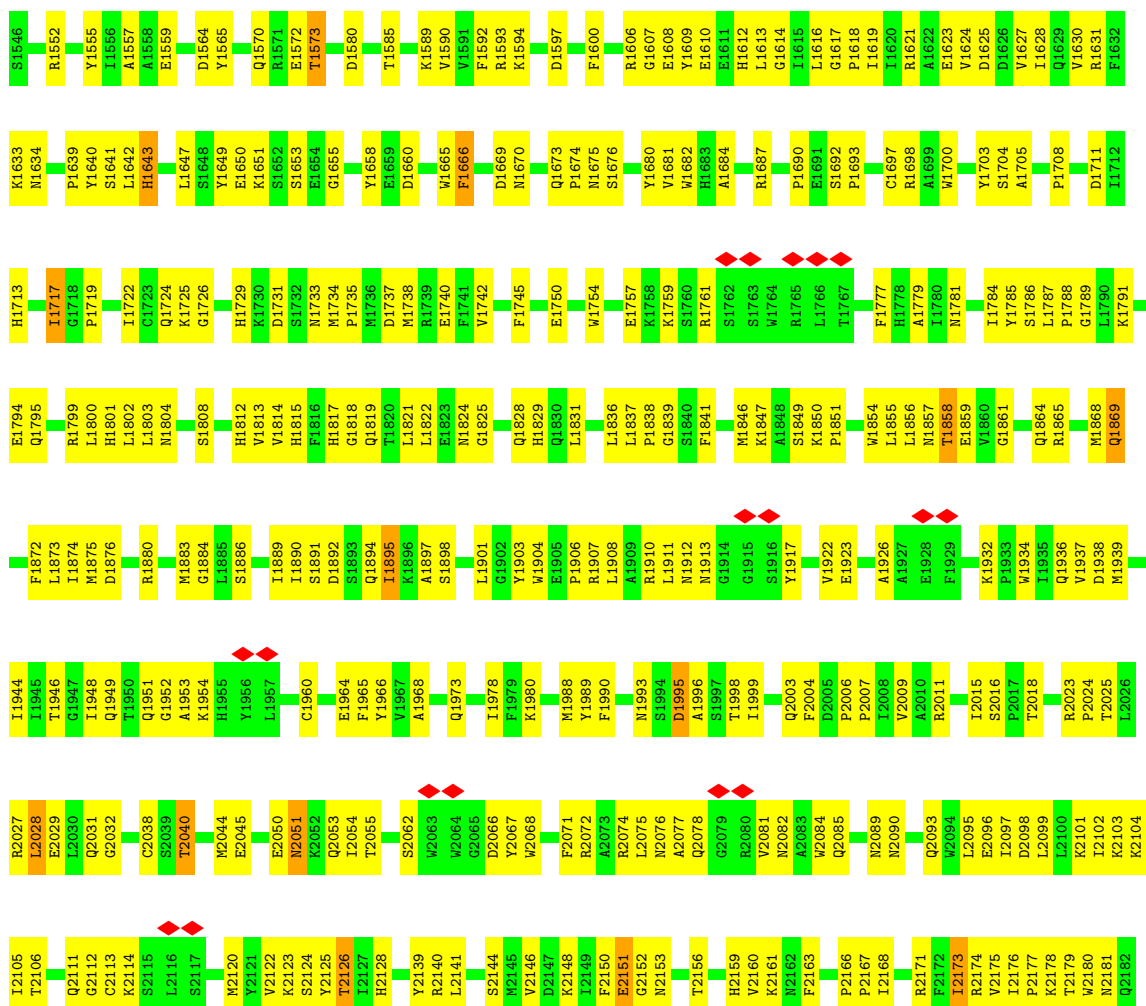
- Molecule 3: Coagulation factor V heavy chain

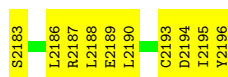




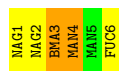
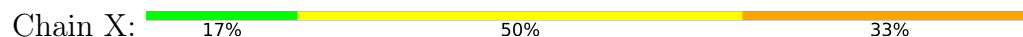
• Molecule 4: Coagulation factor V light chain

Chain B: 51% 47% .

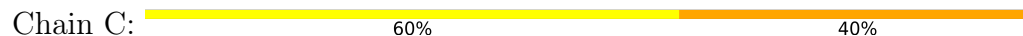




- Molecule 5: alpha-D-mannopyranose-(1-3)-[alpha-D-mannopyranose-(1-6)]beta-D-mannopyranose-(1-4)-2-acetamido-2-deoxy-beta-D-glucopyranose-(1-4)-[alpha-L-fucopyranose-(1-6)]2-acetamido-2-deoxy-beta-D-glucopyranose



- Molecule 6: alpha-D-mannopyranose-(1-3)-[alpha-D-mannopyranose-(1-6)]beta-D-mannopyranose-(1-4)-2-acetamido-2-deoxy-beta-D-glucopyranose-(1-4)-2-acetamido-2-deoxy-beta-D-glucopyranose



- Molecule 7: alpha-D-mannopyranose-(1-6)-alpha-D-mannopyranose-(1-3)-[alpha-D-mannopyranose-(1-6)-alpha-D-mannopyranose-(1-6)]beta-D-mannopyranose-(1-4)-2-acetamido-2-deoxy-beta-D-glucopyranose-(1-4)-2-acetamido-2-deoxy-beta-D-glucopyranose



- Molecule 8: alpha-L-fucopyranose-(1-6)-2-acetamido-2-deoxy-beta-D-glucopyranose



4 Experimental information

Property	Value	Source
EM reconstruction method	SINGLE PARTICLE	Depositor
Imposed symmetry	POINT, Not provided	
Number of particles used	70154	Depositor
Resolution determination method	FSC 0.143 CUT-OFF	Depositor
CTF correction method	PHASE FLIPPING AND AMPLITUDE CORRECTION	Depositor
Microscope	TFS KRIOS	Depositor
Voltage (kV)	300	Depositor
Electron dose ($e^-/\text{\AA}^2$)	45.74	Depositor
Minimum defocus (nm)	1000	Depositor
Maximum defocus (nm)	2000	Depositor
Magnification	Not provided	
Image detector	GATAN K3 (6k x 4k)	Depositor
Maximum map value	0.457	Depositor
Minimum map value	-0.216	Depositor
Average map value	0.000	Depositor
Map value standard deviation	0.008	Depositor
Recommended contour level	0.0252	Depositor
Map size (\AA)	365.19998, 365.19998, 365.19998	wwPDB
Map dimensions	440, 440, 440	wwPDB
Map angles ($^\circ$)	90.0, 90.0, 90.0	wwPDB
Pixel spacing (\AA)	0.83, 0.83, 0.83	Depositor

5 Model quality [i](#)

5.1 Standard geometry [i](#)

Bond lengths and bond angles in the following residue types are not validated in this section: FUC, NA, CA, BMA, MAN, CU, NAG, 0GJ, TYS

The Z score for a bond length (or angle) is the number of standard deviations the observed value is removed from the expected value. A bond length (or angle) with $|Z| > 5$ is considered an outlier worth inspection. RMSZ is the root-mean-square of all Z scores of the bond lengths (or angles).

Mol	Chain	Bond lengths		Bond angles	
		RMSZ	# Z >5	RMSZ	# Z >5
1	H	0.13	0/1907	0.28	0/2566
2	L	0.12	0/1088	0.29	0/1457
3	A	0.18	0/5529	0.32	0/7494
4	B	0.18	0/5448	0.30	0/7370
All	All	0.17	0/13972	0.31	0/18887

Chiral center outliers are detected by calculating the chiral volume of a chiral center and verifying if the center is modelled as a planar moiety or with the opposite hand. A planarity outlier is detected by checking planarity of atoms in a peptide group, atoms in a mainchain group or atoms of a sidechain that are expected to be planar.

Mol	Chain	#Chirality outliers	#Planarity outliers
2	L	0	1

There are no bond length outliers.

There are no bond angle outliers.

There are no chirality outliers.

All (1) planarity outliers are listed below:

Mol	Chain	Res	Type	Group
2	L	104	GLN	Peptide

5.2 Too-close contacts [i](#)

In the following table, the Non-H and H(model) columns list the number of non-hydrogen atoms and hydrogen atoms in the chain respectively. The H(added) column lists the number of hydrogen atoms added and optimized by MolProbity. The Clashes column lists the number of clashes within the asymmetric unit, whereas Symm-Clashes lists symmetry-related clashes.

Mol	Chain	Non-H	H(model)	H(added)	Clashes	Symm-Clashes
1	H	1868	0	1818	61	0
2	L	1070	0	984	24	0
3	A	5406	0	5233	208	0
4	B	5305	0	5152	239	0
5	X	71	0	61	2	0
6	C	61	0	52	1	0
7	D	83	0	70	3	0
8	E	24	0	22	1	0
9	A	1	0	0	0	0
9	H	1	0	0	0	0
10	H	1	0	0	0	0
11	H	25	0	24	4	0
12	B	1	0	0	0	0
All	All	13917	0	13416	508	0

The all-atom clashscore is defined as the number of clashes found per 1000 atoms (including hydrogen atoms). The all-atom clashscore for this structure is 19.

All (508) close contacts within the same asymmetric unit are listed below, sorted by their clash magnitude.

Atom-1	Atom-2	Interatomic distance (Å)	Clash overlap (Å)
1:H:185:TYR:O	1:H:224:LYS:O	1.58	1.21
3:A:566:PRO:HG2	3:A:647:LEU:HA	1.56	0.86
4:B:1949:GLN:HB3	4:B:1999:ILE:HD11	1.58	0.85
1:H:185(A):ASP:O	1:H:223(A):GLY:HA2	1.76	0.85
4:B:1857:ASN:HB2	4:B:1864:GLN:HE22	1.42	0.84
3:A:141:THR:HG1	3:A:228:HIS:HD1	1.24	0.84
4:B:2044:MET:HB3	4:B:2189:GLU:HG2	1.64	0.80
1:H:92:ASN:HD21	3:A:664:SER:HB3	1.49	0.78
1:H:216:GLY:HA3	11:H:303:OGJ:HH11	1.48	0.78
3:A:658:PRO:HA	3:A:659:ASP:HB3	1.65	0.77
3:A:635:LEU:HB3	3:A:649:LEU:HB3	1.68	0.76
4:B:1606:ARG:NH2	4:B:1616:LEU:O	2.19	0.75
4:B:1873:LEU:HD21	4:B:1944:ILE:HD11	1.69	0.73
3:A:634:MET:HE2	3:A:648:ARG:HB2	1.69	0.72
3:A:232:MET:HA	3:A:263:ALA:H	1.52	0.72
3:A:517:GLN:O	3:A:562:ASN:ND2	2.22	0.72
4:B:1858:THR:O	4:B:1864:GLN:NE2	2.23	0.72
3:A:4:ARG:NH2	3:A:68:ASP:OD2	2.23	0.71
3:A:151:ILE:HG22	3:A:194:LYS:HG2	1.71	0.71
3:A:409:ASN:ND2	3:A:447:VAL:O	2.22	0.71
3:A:41:TYR:HA	3:A:48:GLU:HA	1.73	0.70

Continued on next page...

Continued from previous page...

Atom-1	Atom-2	Interatomic distance (Å)	Clash overlap (Å)
4:B:1628:ILE:HB	4:B:1682:TRP:HB2	1.74	0.70
4:B:1719:PRO:HB3	4:B:1742:VAL:HG11	1.74	0.69
3:A:76:ASN:ND2	3:A:80:LYS:O	2.26	0.69
1:H:24:ASP:HA	1:H:71:ARG:HH12	1.58	0.69
4:B:1565:TYR:OH	4:B:1750:GLU:OE2	2.07	0.68
4:B:1901:LEU:HD13	4:B:1923:GLU:HB2	1.74	0.68
4:B:1625:ASP:N	4:B:1684:ALA:O	2.24	0.68
3:A:359:ILE:HD12	3:A:538:PHE:HB2	1.76	0.68
3:A:420:HIS:HB3	3:A:475:ARG:HB3	1.75	0.68
4:B:1673:GLN:O	4:B:1676:SER:OG	2.11	0.67
1:H:85:VAL:HG13	3:A:670:PRO:HG3	1.74	0.67
4:B:1855:LEU:O	4:B:1857:ASN:ND2	2.28	0.67
2:L:88:LEU:HG	4:B:1681:VAL:HG21	1.77	0.67
4:B:1617:GLY:N	4:B:1717:ILE:O	2.24	0.67
4:B:1936:GLN:HE22	4:B:1973:GLN:HG3	1.60	0.67
3:A:256:SER:OG	3:A:420:HIS:ND1	2.22	0.66
1:H:86:GLU:HG2	1:H:87:VAL:HG23	1.76	0.66
3:A:181:LYS:NZ	3:A:218:THR:O	2.29	0.66
4:B:1711:ASP:OD1	4:B:1754:TRP:NE1	2.27	0.66
3:A:161:PRO:HB3	3:A:230:LEU:HD11	1.78	0.66
3:A:153:ASP:O	3:A:156:SER:OG	2.09	0.65
3:A:593:ILE:HD13	4:B:1838:PRO:HD2	1.78	0.65
4:B:1740:GLU:OE2	4:B:1799:ARG:NH1	2.30	0.65
3:A:181:LYS:HG2	3:A:219:VAL:HG12	1.79	0.65
4:B:2099:LEU:HD13	4:B:2103:LYS:HB2	1.79	0.65
3:A:15:TRP:HE1	3:A:17:TYR:HA	1.62	0.64
4:B:1552:ARG:NH1	4:B:1733:ASN:OD1	2.30	0.64
4:B:1869:GLN:O	4:B:1869:GLN:NE2	2.30	0.64
4:B:1946:THR:HG22	4:B:2007:PRO:HB3	1.78	0.64
3:A:469:ASP:HB3	3:A:473:LEU:HD21	1.79	0.64
4:B:2105:ILE:HG12	4:B:2190:LEU:HD23	1.78	0.63
2:L:87:LYS:HG3	2:L:106:SER:HA	1.79	0.63
3:A:90:ARG:HH22	4:B:1847:LYS:HB3	1.63	0.63
4:B:1817:HIS:CD2	4:B:1857:ASN:HD21	2.16	0.63
4:B:1819:GLN:NE2	4:B:1849:SER:OG	2.31	0.63
3:A:420:HIS:NE2	3:A:478:TYR:OH	2.29	0.63
1:H:204:LYS:NZ	2:L:96:CYS:O	2.31	0.62
4:B:1651:LYS:NZ	4:B:1660:ASP:OD2	2.30	0.62
1:H:21:GLU:HA	1:H:156:LYS:HA	1.81	0.62
4:B:1886:SER:HB3	4:B:1911:LEU:HB3	1.81	0.62
3:A:82:LEU:HD13	3:A:158:LEU:HD11	1.82	0.62

Continued on next page...

Continued from previous page...

Atom-1	Atom-2	Interatomic distance (Å)	Clash overlap (Å)
3:A:269:ASN:OD1	3:A:269:ASN:N	2.32	0.62
3:A:132:PRO:HG3	3:A:140:LEU:HG	1.80	0.62
4:B:1822:LEU:HD11	4:B:1828:GLN:HB3	1.81	0.62
4:B:1690:PRO:HG2	4:B:1724:GLN:HG3	1.81	0.62
4:B:1995:ASP:N	4:B:1995:ASP:OD1	2.30	0.62
4:B:1740:GLU:OE1	4:B:1801:HIS:NE2	2.32	0.61
4:B:1821:LEU:N	4:B:1831:LEU:O	2.32	0.61
3:A:85:HIS:NE2	3:A:91:TYR:OH	2.32	0.61
4:B:2153:ASN:HA	4:B:2160:VAL:HG21	1.82	0.61
3:A:397:ALA:HB2	3:A:403:LEU:HD21	1.82	0.61
4:B:2112:GLY:O	4:B:2187:ARG:NH2	2.33	0.61
3:A:289:GLN:HG3	3:A:484:MET:HE2	1.82	0.61
3:A:138:PRO:HG2	3:A:179:PHE:HE2	1.66	0.61
4:B:1858:THR:HG21	4:B:1868:MET:HE3	1.83	0.61
4:B:2050:GLU:HB2	4:B:2053:GLN:HG3	1.83	0.61
4:B:2102:ILE:HG13	4:B:2171:ARG:HB2	1.82	0.61
4:B:1952:GLY:O	4:B:2027:ARG:NH1	2.34	0.61
4:B:2111:GLN:OE1	4:B:2159:HIS:NE2	2.34	0.60
1:H:46:ILE:HB	1:H:120:PRO:HA	1.84	0.60
3:A:186:LEU:HD12	3:A:230:LEU:HB2	1.83	0.60
1:H:190:ALA:O	11:H:303:OGJ:NH2	2.35	0.60
4:B:1856:LEU:HB2	4:B:1872:PHE:HD1	1.65	0.60
3:A:394:ILE:HD12	3:A:496:LEU:HD13	1.83	0.60
4:B:2103:LYS:NZ	4:B:2194:ASP:OD1	2.35	0.60
2:L:77:GLU:OE1	2:L:85:THR:OG1	2.18	0.59
4:B:1606:ARG:NH1	4:B:1614:GLY:O	2.28	0.59
3:A:242:HIS:HE1	3:A:418:TYR:HE2	1.48	0.59
3:A:229:LEU:HD13	3:A:241:ILE:HG21	1.85	0.59
4:B:2085:GLN:NE2	4:B:2120:MET:SD	2.76	0.59
4:B:1880:ARG:NH1	4:B:2003:GLN:OE1	2.35	0.59
4:B:1926:ALA:HB3	4:B:1932:LYS:HA	1.85	0.59
4:B:2125:TYR:O	4:B:2150:PHE:N	2.36	0.59
1:H:164:ASP:OD1	1:H:164:ASP:N	2.22	0.59
3:A:54:ILE:HB	3:A:214:MET:HE3	1.85	0.59
1:H:165:ARG:NH2	3:A:513:ASP:OD2	2.35	0.59
2:L:45:LYS:HD3	2:L:65:LEU:HD22	1.84	0.58
3:A:161:PRO:HG3	3:A:184:VAL:HG11	1.85	0.58
4:B:1570:GLN:O	4:B:1573:THR:OG1	2.21	0.58
4:B:1630:VAL:HG13	4:B:1680:TYR:HB2	1.84	0.58
1:H:215:TRP:HZ3	1:H:217:GLU:HG3	1.66	0.58
2:L:111:CYS:HB3	2:L:115:TYR:HB3	1.86	0.58

Continued on next page...

Continued from previous page...

Atom-1	Atom-2	Interatomic distance (Å)	Clash overlap (Å)
3:A:20:GLU:O	3:A:23:ASN:ND2	2.36	0.58
3:A:521:ALA:HA	3:A:587:VAL:HG23	1.85	0.58
1:H:123:LEU:HD12	2:L:113:ARG:HH22	1.68	0.58
4:B:1643:HIS:HB2	4:B:1705:ALA:HB2	1.84	0.58
3:A:186:LEU:HB3	3:A:207:ASN:HA	1.85	0.58
4:B:1886:SER:N	4:B:2029:GLU:OE1	2.22	0.58
4:B:2076:ASN:ND2	4:B:2111:GLN:OE1	2.37	0.58
2:L:88:LEU:H	2:L:102:ARG:HH22	1.52	0.58
3:A:406:VAL:HG22	3:A:454:THR:HG23	1.86	0.58
4:B:1729:HIS:ND1	4:B:1731:ASP:OD1	2.34	0.58
1:H:20:GLN:O	1:H:157:MET:N	2.30	0.57
4:B:2072:ARG:NH1	4:B:2081:VAL:O	2.35	0.57
3:A:104:THR:OG1	3:A:109:LYS:NZ	2.30	0.57
3:A:515:GLU:N	3:A:515:GLU:OE1	2.37	0.57
4:B:2051:ASN:HB3	4:B:2071:PHE:HB2	1.84	0.57
1:H:31:ALA:O	1:H:44:GLY:N	2.38	0.57
3:A:635:LEU:N	3:A:649:LEU:O	2.22	0.57
3:A:139:CYS:HA	3:A:165:CYS:HA	1.86	0.57
4:B:2120:MET:HG3	4:B:2183:SER:HB3	1.87	0.57
1:H:180:MET:SD	1:H:215:TRP:NE1	2.73	0.56
4:B:1785:TYR:OH	4:B:1865:ARG:O	2.21	0.56
4:B:1669:ASP:OD1	4:B:1670:ASN:ND2	2.35	0.56
2:L:4:PHE:HD1	2:L:5:LEU:HG	1.70	0.56
3:A:519:VAL:N	3:A:562:ASN:OD1	2.34	0.56
4:B:1821:LEU:HD23	4:B:1846:MET:HB3	1.85	0.56
4:B:2015:ILE:HD12	4:B:2028:LEU:HD22	1.86	0.56
4:B:2045:GLU:HB2	4:B:2075:LEU:HB3	1.88	0.56
1:H:174:PHE:HA	3:A:510:ARG:HH22	1.70	0.56
1:H:187:GLN:HA	1:H:221:ALA:HB1	1.87	0.56
2:L:102:ARG:NH1	4:B:1650:GLU:OE1	2.39	0.56
3:A:141:THR:HG22	3:A:265:SER:HB2	1.86	0.56
4:B:1745:PHE:O	4:B:1804:ASN:ND2	2.38	0.56
4:B:1960:CYS:SG	4:B:2023:ARG:NH1	2.79	0.56
3:A:40:GLU:HB3	3:A:60:PRO:HB3	1.87	0.56
4:B:1876:ASP:OD2	4:B:2040:THR:OG1	2.22	0.56
3:A:202:LEU:O	7:D:2:NAG:O6	2.23	0.56
4:B:1912:ASN:OD1	4:B:1951:GLN:NE2	2.34	0.55
2:L:104:GLN:O	2:L:106:SER:N	2.38	0.55
3:A:26:LEU:HG	3:A:28:LEU:HG	1.88	0.55
1:H:16:ILE:HD12	1:H:156:LYS:HB2	1.87	0.55
4:B:1610:GLU:HB3	4:B:1613:LEU:HD12	1.89	0.55

Continued on next page...

Continued from previous page...

Atom-1	Atom-2	Interatomic distance (Å)	Clash overlap (Å)
4:B:1623:GLU:OE1	4:B:1726:GLY:N	2.39	0.55
3:A:509:GLN:OE1	3:A:581:GLN:NE2	2.34	0.55
4:B:1980:LYS:O	4:B:1988:MET:HB2	2.06	0.55
3:A:169:THR:OG1	3:A:176:GLN:OE1	2.25	0.55
4:B:1589:LYS:NZ	4:B:1713:HIS:O	2.40	0.55
3:A:238:LEU:HD23	3:A:261:VAL:HG12	1.89	0.54
4:B:1639:PRO:HB3	4:B:1674:PRO:HD3	1.88	0.54
1:H:202:ARG:NH1	1:H:207:TYR:OH	2.40	0.54
3:A:398:GLN:OE1	3:A:501:ARG:N	2.38	0.54
3:A:513:ASP:OD1	3:A:579:THR:OG1	2.21	0.54
4:B:1932:LYS:H	4:B:1932:LYS:HD2	1.71	0.54
4:B:1564:ASP:OD1	4:B:1585:THR:OG1	2.19	0.54
4:B:2148:LYS:HZ2	4:B:2150:PHE:HD1	1.55	0.54
4:B:1952:GLY:N	4:B:1996:ALA:O	2.40	0.54
3:A:42:GLU:N	3:A:47:LYS:O	2.36	0.54
3:A:246:GLN:HE21	3:A:278:TRP:CD1	2.26	0.54
3:A:494:LEU:HD13	3:A:583:HIS:HB3	1.89	0.54
4:B:1895:ILE:HG23	4:B:1937:VAL:HG12	1.89	0.54
4:B:1884:GLY:HA3	4:B:1889:ILE:HB	1.90	0.54
3:A:348:ARG:HA	3:A:352:LEU:HD13	1.90	0.54
4:B:1619:ILE:HA	4:B:1719:PRO:HG2	1.89	0.54
3:A:147:HIS:ND1	3:A:147:HIS:O	2.41	0.53
3:A:527:LYS:HD2	3:A:589:THR:HG21	1.90	0.53
3:A:474:THR:HG21	3:A:583:HIS:HB3	1.90	0.53
4:B:1609:TYR:CD1	4:B:2006:PRO:HD3	2.44	0.53
4:B:2076:ASN:H	4:B:2111:GLN:HE22	1.55	0.53
1:H:53:LEU:HD11	1:H:103:ILE:HD11	1.91	0.53
3:A:106:PRO:HA	3:A:109:LYS:HB2	1.90	0.53
3:A:149:ASN:O	3:A:153:ASP:HB3	2.08	0.53
2:L:60:LYS:HB3	2:L:71:THR:HG23	1.90	0.53
3:A:564:TYR:HB2	3:A:569:ILE:HD12	1.89	0.53
4:B:1897:ALA:HB2	4:B:1906:PRO:HG3	1.90	0.53
3:A:152:GLU:HA	3:A:194:LYS:HG3	1.91	0.53
3:A:29:SER:OG	3:A:30:VAL:N	2.41	0.53
1:H:16:ILE:HA	1:H:190:ALA:HA	1.91	0.53
3:A:546:LYS:HG3	3:A:549:ASP:HB2	1.91	0.53
3:A:105:PHE:CG	4:B:2167:PRO:HD3	2.44	0.53
4:B:1731:ASP:O	4:B:1733:ASN:ND2	2.42	0.53
4:B:1895:ILE:HD12	4:B:1907:ARG:HA	1.91	0.52
3:A:139:CYS:SG	3:A:176:GLN:NE2	2.83	0.52
4:B:1552:ARG:N	4:B:1627:VAL:O	2.42	0.52

Continued on next page...

Continued from previous page...

Atom-1	Atom-2	Interatomic distance (Å)	Clash overlap (Å)
4:B:1647:LEU:HD21	4:B:1722:ILE:HG13	1.91	0.52
4:B:1875:MET:HG2	4:B:1944:ILE:HD13	1.90	0.52
4:B:2123:LYS:HD3	4:B:2181:ASN:HB2	1.91	0.52
2:L:24:TYR:OH	2:L:38:ASN:OD1	2.25	0.52
1:H:79:GLY:O	1:H:115:ARG:NH2	2.41	0.52
3:A:17:TYR:HE1	3:A:57:LEU:HD11	1.74	0.52
4:B:2078:GLN:O	4:B:2082:ASN:ND2	2.42	0.52
3:A:561:ILE:HG22	3:A:566:PRO:HG3	1.90	0.52
4:B:1572:GLU:N	4:B:1572:GLU:OE1	2.43	0.52
3:A:33:PHE:HB2	3:A:35:LYS:HZ2	1.74	0.52
3:A:330:GLU:OE1	3:A:330:GLU:N	2.35	0.52
3:A:572:LEU:HD11	3:A:649:LEU:HD21	1.92	0.52
4:B:1850:LYS:O	4:B:1854:TRP:NE1	2.41	0.52
3:A:548:ASP:OD1	3:A:548:ASP:N	2.43	0.52
3:A:2:GLN:OE1	3:A:4:ARG:NH1	2.43	0.51
4:B:1787:LEU:HD12	4:B:1788:PRO:HD2	1.92	0.51
1:H:185:TYR:C	1:H:224:LYS:O	2.49	0.51
1:H:45:THR:HB	1:H:53:LEU:HB3	1.92	0.51
3:A:325:PHE:HE2	3:A:374:GLU:HG3	1.75	0.51
2:L:131:PRO:HD2	2:L:134:LYS:HE3	1.92	0.51
1:H:34:ILE:HB	1:H:38:ASN:HA	1.93	0.51
1:H:67:ARG:HD2	1:H:70:ASP:HB2	1.91	0.51
3:A:181:LYS:HB3	3:A:225:ILE:HG23	1.91	0.51
2:L:109:CYS:SG	2:L:122:LYS:HA	2.50	0.51
3:A:492:ILE:HD13	3:A:587:VAL:HG11	1.93	0.51
3:A:581:GLN:HG3	3:A:624:THR:HG22	1.92	0.51
4:B:1904:TRP:HA	4:B:1908:LEU:HD12	1.93	0.51
4:B:2054:ILE:HD12	4:B:2071:PHE:HA	1.93	0.51
4:B:2095:LEU:HD23	4:B:2188:LEU:HD21	1.93	0.51
4:B:1621:ARG:NH1	4:B:1734:MET:SD	2.83	0.51
3:A:15:TRP:NE1	3:A:17:TYR:HA	2.25	0.50
4:B:2139:TYR:OH	4:B:2166:PRO:O	2.24	0.50
3:A:81:PRO:HB2	3:A:113:ALA:HB1	1.93	0.50
3:A:326:ILE:O	3:A:408:LYS:N	2.43	0.50
4:B:1912:ASN:HA	4:B:2027:ARG:HH21	1.75	0.50
3:A:99:SER:HB2	3:A:112:ASP:HB3	1.93	0.50
4:B:2038:CYS:SG	4:B:2193:CYS:N	2.85	0.50
4:B:2066:ASP:OD1	4:B:2067:TYR:N	2.45	0.50
4:B:1565:TYR:OH	4:B:1589:LYS:HE3	2.11	0.50
3:A:147:HIS:CD2	3:A:150:LEU:HD21	2.47	0.50
3:A:225:ILE:HD12	3:A:227:TRP:HE1	1.77	0.50

Continued on next page...

Continued from previous page...

Atom-1	Atom-2	Interatomic distance (Å)	Clash overlap (Å)
4:B:1949:GLN:OE1	4:B:2031:GLN:NE2	2.45	0.50
1:H:92:ASN:HB3	3:A:666:GLU:OE1	2.12	0.49
3:A:517:GLN:HA	3:A:583:HIS:HB2	1.94	0.49
4:B:1653:SER:OG	4:B:1681:VAL:N	2.40	0.49
4:B:2151:GLU:H	4:B:2151:GLU:CD	2.18	0.49
7:D:1:NAG:H83	7:D:1:NAG:H3	1.94	0.49
1:H:97:GLU:HG3	1:H:98:THR:HG23	1.94	0.49
3:A:396:ARG:NH1	3:A:507:GLY:O	2.45	0.49
4:B:1949:GLN:HE21	4:B:1999:ILE:HG12	1.77	0.49
3:A:297:ASP:HB3	3:A:299:LYS:HE2	1.95	0.49
4:B:1804:ASN:OD1	4:B:1838:PRO:HA	2.12	0.49
4:B:1951:GLN:HB2	4:B:2027:ARG:HB2	1.94	0.49
4:B:2113:CYS:SG	4:B:2114:LYS:N	2.85	0.49
1:H:143:ARG:HD3	1:H:149:GLY:H	1.78	0.49
3:A:97:GLY:O	3:A:147:HIS:HB3	2.12	0.49
3:A:335:TYR:O	3:A:568:SER:OG	2.28	0.49
3:A:169:THR:OG1	3:A:169:THR:O	2.29	0.49
4:B:2074:ARG:HB2	4:B:2077:ALA:HB2	1.94	0.49
3:A:364:LYS:N	3:A:534:ASN:OD1	2.43	0.49
3:A:593:ILE:HD11	3:A:614:THR:HB	1.93	0.49
3:A:351:HIS:NE2	3:A:554:GLU:O	2.46	0.48
4:B:1857:ASN:HB2	4:B:1864:GLN:NE2	2.21	0.48
3:A:288:LEU:HD23	3:A:484:MET:HG2	1.94	0.48
3:A:545:VAL:HG23	3:A:547:ARG:HH12	1.77	0.48
4:B:1883:MET:N	4:B:2029:GLU:OE2	2.47	0.48
4:B:1697:CYS:SG	4:B:1799:ARG:NH1	2.86	0.48
1:H:88:VAL:HG22	1:H:106:LEU:HD22	1.94	0.48
1:H:209:VAL:HG12	1:H:231:VAL:HG21	1.94	0.48
3:A:359:ILE:HD11	3:A:535:ILE:HD12	1.94	0.48
4:B:1891:SER:H	4:B:1894:GLN:NE2	2.11	0.48
3:A:242:HIS:HE1	3:A:418:TYR:CE2	2.28	0.48
4:B:1890:ILE:HG23	4:B:1894:GLN:HB2	1.95	0.48
2:L:88:LEU:HD22	2:L:102:ARG:HH12	1.79	0.48
3:A:422:VAL:HG11	3:A:457:TRP:HB3	1.95	0.48
4:B:1789:GLY:HA2	4:B:1791:LYS:NZ	2.29	0.48
4:B:2044:MET:O	4:B:2074:ARG:HD3	2.14	0.48
4:B:2140:ARG:HG3	4:B:2146:VAL:C	2.39	0.48
4:B:2089:ASN:HB2	4:B:2180:TRP:HE1	1.79	0.48
3:A:37:VAL:HG11	3:A:57:LEU:HD22	1.94	0.47
4:B:1698:ARG:HD3	4:B:1700:TRP:CZ2	2.49	0.47
4:B:1703:TYR:HB3	4:B:1717:ILE:HG13	1.96	0.47

Continued on next page...

Continued from previous page...

Atom-1	Atom-2	Interatomic distance (Å)	Clash overlap (Å)
4:B:1742:VAL:HG13	4:B:1803:LEU:HD13	1.96	0.47
4:B:1965:PHE:O	4:B:1990:PHE:N	2.47	0.47
4:B:2075:LEU:HD13	4:B:2189:GLU:HB2	1.95	0.47
4:B:2141:LEU:HB2	4:B:2144:SER:HB2	1.96	0.47
4:B:1789:GLY:HA2	4:B:1791:LYS:HZ2	1.79	0.47
3:A:335:TYR:HE1	3:A:363:TYR:HD2	1.61	0.47
1:H:56:ALA:N	1:H:102:ASP:OD1	2.43	0.47
3:A:3:LEU:HD11	3:A:71:LYS:HE3	1.97	0.47
3:A:229:LEU:HB2	3:A:266:THR:HG22	1.97	0.47
3:A:335:TYR:CD2	3:A:560:THR:HG21	2.48	0.47
4:B:2054:ILE:HG12	4:B:2097:ILE:HG23	1.97	0.47
1:H:89:ILE:HD11	3:A:665:TYS:CG	2.44	0.47
3:A:138:PRO:HG2	3:A:179:PHE:CE2	2.46	0.47
4:B:1649:TYR:HB3	4:B:1682:TRP:HD1	1.80	0.47
3:A:39:ARG:NH2	3:A:56:GLY:O	2.48	0.47
3:A:241:ILE:N	3:A:258:ILE:O	2.48	0.47
3:A:262:SER:O	4:B:1813:VAL:HG21	2.14	0.47
4:B:1944:ILE:HG12	4:B:2009:VAL:HG22	1.96	0.47
4:B:2090:ASN:OD1	4:B:2093:GLN:NE2	2.35	0.47
4:B:2112:GLY:N	4:B:2156:THR:O	2.45	0.47
4:B:2051:ASN:OD1	4:B:2051:ASN:N	2.48	0.47
1:H:134:ASP:OD1	1:H:134:ASP:N	2.48	0.47
3:A:147:HIS:NE2	3:A:150:LEU:HD11	2.29	0.47
3:A:330:GLU:HB2	3:A:364:LYS:HE3	1.97	0.47
3:A:391:LEU:HD13	3:A:562:ASN:HA	1.97	0.47
4:B:1608:GLU:HB2	4:B:2006:PRO:HD2	1.96	0.47
3:A:100:TYR:CE1	3:A:102:ASP:HB3	2.50	0.47
3:A:355:PHE:HB3	3:A:358:GLN:H	1.80	0.47
3:A:47:LYS:HE3	3:A:48:GLU:HG2	1.96	0.46
4:B:1600:PHE:CZ	4:B:1633:LYS:HB2	2.51	0.46
4:B:2055:THR:OG1	4:B:2096:GLU:HB3	2.15	0.46
2:L:135:GLN:N	2:L:135:GLN:OE1	2.49	0.46
4:B:1964:GLU:OE1	4:B:2018:THR:OG1	2.33	0.46
1:H:158:LEU:HD22	1:H:160:VAL:HG13	1.96	0.46
1:H:189:ASP:OD1	1:H:190:ALA:N	2.49	0.46
4:B:1570:GLN:HA	4:B:1573:THR:HG23	1.97	0.46
1:H:85:VAL:HA	1:H:108:LEU:HA	1.97	0.46
3:A:8:VAL:HA	3:A:39:ARG:O	2.15	0.46
3:A:240:SER:HA	3:A:259:THR:HA	1.98	0.46
3:A:599:THR:OG1	3:A:634:MET:N	2.40	0.46
2:L:88:LEU:H	2:L:102:ARG:NH2	2.12	0.46

Continued on next page...

Continued from previous page...

Atom-1	Atom-2	Interatomic distance (Å)	Clash overlap (Å)
2:L:104:GLN:HA	4:B:1665:TRP:CE2	2.51	0.46
3:A:209:TYR:HB2	3:A:214:MET:HB2	1.97	0.46
4:B:1794:GLU:HG2	4:B:1795:GLN:HG2	1.97	0.46
4:B:1898:SER:HB2	4:B:1934:TRP:CE2	2.50	0.46
4:B:1938:ASP:OD1	4:B:2011:ARG:NE	2.37	0.46
2:L:62:LYS:N	2:L:69:THR:O	2.48	0.46
3:A:593:ILE:HD12	4:B:1837:LEU:HD22	1.97	0.46
4:B:1944:ILE:O	4:B:2032:GLY:HA3	2.16	0.46
4:B:2062:SER:OG	4:B:2066:ASP:N	2.46	0.46
4:B:2122:VAL:H	4:B:2153:ASN:HD22	1.63	0.46
3:A:311:ILE:H	3:A:311:ILE:HG13	1.52	0.46
4:B:1922:VAL:O	4:B:2024:PRO:HD2	2.16	0.46
1:H:86:GLU:HA	1:H:109:LYS:HE3	1.96	0.46
3:A:149:ASN:ND2	3:A:152:GLU:HB3	2.31	0.46
4:B:2161:LYS:HE2	4:B:2163:PHE:CE1	2.51	0.46
4:B:1557:ALA:HB2	4:B:1633:LYS:HB3	1.97	0.45
4:B:1675:ASN:HB2	8:E:1:NAG:N2	2.30	0.45
4:B:2126:THR:O	4:B:2176:ILE:N	2.48	0.45
3:A:179:PHE:CD1	3:A:226:SER:HB2	2.52	0.45
4:B:2044:MET:HG2	4:B:2188:LEU:O	2.16	0.45
3:A:315:GLN:O	3:A:319:MET:HG3	2.16	0.45
3:A:36:ILE:HD11	3:A:80:LYS:HD3	1.97	0.45
3:A:38:TYR:O	3:A:39:ARG:NH1	2.49	0.45
3:A:397:ALA:O	3:A:498:CYS:N	2.47	0.45
4:B:1966:TYR:CZ	4:B:2016:SER:HB2	2.51	0.45
3:A:94:LEU:HD13	4:B:2195:ILE:HG12	1.98	0.45
3:A:332:ILE:HD12	3:A:538:PHE:HZ	1.82	0.45
3:A:416:SER:OG	3:A:417:ILE:N	2.47	0.45
3:A:634:MET:HB2	4:B:1658:TYR:CE2	2.51	0.45
4:B:1666:PHE:HD1	4:B:1666:PHE:HA	1.69	0.45
4:B:1824:ASN:OD1	4:B:1825:GLY:N	2.50	0.45
3:A:45:PHE:HZ	3:A:73:HIS:HB3	1.81	0.45
3:A:243:PHE:CE2	3:A:248:LEU:HD21	2.52	0.45
3:A:486:ASP:OD1	3:A:529:TRP:NE1	2.39	0.45
4:B:1875:MET:SD	4:B:2007:PRO:HG3	2.57	0.45
4:B:2053:GLN:NE2	4:B:2098:ASP:O	2.38	0.45
6:C:4:MAN:H3	6:C:5:MAN:H2	1.99	0.45
3:A:254:LYS:HG3	3:A:464:GLU:O	2.17	0.45
3:A:475:ARG:HG3	3:A:497:ILE:HD12	1.99	0.45
4:B:1737:ASP:CG	4:B:1799:ARG:HH22	2.24	0.45
4:B:2076:ASN:H	4:B:2111:GLN:NE2	2.15	0.45

Continued on next page...

Continued from previous page...

Atom-1	Atom-2	Interatomic distance (Å)	Clash overlap (Å)
4:B:1759:LYS:H	4:B:1761:ARG:HH21	1.65	0.44
4:B:1910:ARG:HB2	4:B:1913:ASN:HB2	1.99	0.44
3:A:17:TYR:CE1	3:A:57:LEU:HD11	2.52	0.44
3:A:327:ALA:HA	3:A:408:LYS:HB3	1.99	0.44
4:B:1580:ASP:CG	4:B:1865:ARG:HH21	2.24	0.44
5:X:3:BMA:H3	5:X:4:MAN:H2	1.67	0.44
1:H:189:ASP:OD2	11:H:303:OGJ:NH1	2.49	0.44
2:L:42:ASN:ND2	2:L:63:ASP:O	2.50	0.44
3:A:140:LEU:N	3:A:164:ILE:O	2.50	0.44
3:A:408:LYS:NZ	3:A:452:THR:OG1	2.45	0.44
4:B:1704:SER:OG	4:B:1711:ASP:HB3	2.17	0.44
4:B:1802:LEU:HD13	4:B:1814:VAL:HG21	1.99	0.44
3:A:38:TYR:OH	3:A:83:SER:O	2.35	0.44
3:A:246:GLN:HB3	3:A:270:MET:HE1	1.98	0.44
3:A:398:GLN:HE21	3:A:503:LEU:HB2	1.83	0.44
4:B:1597:ASP:OD1	4:B:1600:PHE:N	2.50	0.44
4:B:2075:LEU:HD22	4:B:2189:GLU:HG3	2.00	0.44
4:B:2123:LYS:N	4:B:2179:THR:O	2.46	0.44
3:A:260:LEU:HD21	3:A:266:THR:HB	2.00	0.44
4:B:1779:ALA:HB2	4:B:1784:ILE:HG23	1.98	0.44
4:B:2123:LYS:H	4:B:2180:TRP:HA	1.82	0.44
4:B:2180:TRP:HB2	4:B:2183:SER:O	2.17	0.44
2:L:116:THR:N	2:L:125:ILE:O	2.50	0.44
3:A:595:THR:HG21	4:B:1839:GLY:HA3	1.99	0.44
1:H:147:GLU:HB2	1:H:220:CYS:HB2	2.00	0.44
3:A:97:GLY:HA2	3:A:111:ASP:O	2.18	0.44
3:A:455:TYR:HB3	3:A:457:TRP:NE1	2.33	0.44
3:A:610:GLU:HG2	4:B:1698:ARG:HH21	1.81	0.44
4:B:1875:MET:HB2	4:B:1875:MET:HE2	1.78	0.44
1:H:124:PRO:HD3	1:H:208:PHE:HB3	1.99	0.44
3:A:13:ILE:HD11	3:A:15:TRP:HB2	2.00	0.43
3:A:421:GLY:HA3	3:A:497:ILE:CD1	2.48	0.43
4:B:1592:PHE:HE2	4:B:1703:TYR:HA	1.83	0.43
4:B:1612:HIS:O	4:B:1781:ASN:ND2	2.31	0.43
4:B:1621:ARG:NE	4:B:1735:PRO:HD3	2.33	0.43
4:B:1856:LEU:HB2	4:B:1872:PHE:CD1	2.49	0.43
1:H:198:PRO:HB2	1:H:200:VAL:HG13	2.00	0.43
4:B:1607:GLY:HA3	4:B:1980:LYS:HB3	1.99	0.43
3:A:237:GLU:OE2	3:A:287:HIS:NE2	2.49	0.43
4:B:1600:PHE:CE2	4:B:1633:LYS:HB2	2.53	0.43
4:B:1777:PHE:HD2	4:B:1784:ILE:HD13	1.84	0.43

Continued on next page...

Continued from previous page...

Atom-1	Atom-2	Interatomic distance (Å)	Clash overlap (Å)
3:A:35:LYS:HD2	3:A:156:SER:O	2.18	0.43
3:A:276:GLY:H	3:A:298:ILE:HB	1.83	0.43
3:A:365:LYS:HB3	3:A:365:LYS:HE2	1.77	0.43
4:B:1944:ILE:HG23	4:B:2007:PRO:HB2	2.01	0.43
1:H:215:TRP:HA	11:H:303:OGJ:HG21	2.01	0.43
3:A:65:GLU:OE1	3:A:168:GLY:N	2.49	0.43
3:A:492:ILE:HG12	3:A:587:VAL:HG21	2.00	0.43
4:B:1559:GLU:CD	4:B:1593:ARG:HG3	2.44	0.43
3:A:45:PHE:CZ	3:A:73:HIS:HB3	2.54	0.43
3:A:574:PHE:CD2	3:A:627:MET:HE3	2.54	0.43
3:A:586:SER:OG	3:A:615:LEU:HB3	2.19	0.43
4:B:1872:PHE:CE2	4:B:1874:ILE:HG13	2.54	0.43
4:B:2125:TYR:HA	4:B:2178:LYS:HG2	2.00	0.43
1:H:46:ILE:HA	1:H:52:ILE:HD13	2.00	0.43
1:H:171:SER:O	1:H:224:LYS:NZ	2.52	0.43
2:L:46:ASP:OD1	2:L:49:GLN:NE2	2.40	0.43
3:A:252:HIS:O	3:A:466:THR:OG1	2.35	0.43
3:A:429:ASP:OD1	3:A:429:ASP:N	2.49	0.43
4:B:1800:LEU:HB3	4:B:1802:LEU:HD21	1.99	0.43
1:H:205:ASP:N	1:H:205:ASP:OD1	2.51	0.43
4:B:1791:LYS:HD2	4:B:2007:PRO:HG2	1.99	0.43
4:B:1738:MET:HB2	4:B:1799:ARG:NH2	2.34	0.43
3:A:12:GLY:HA2	3:A:36:ILE:HA	2.01	0.42
3:A:20:GLU:HB3	3:A:21:PRO:HD3	2.01	0.42
3:A:58:LEU:HD21	3:A:186:LEU:HB2	2.02	0.42
4:B:1822:LEU:HD12	4:B:1829:HIS:O	2.20	0.42
4:B:1851:PRO:HA	4:B:1874:ILE:HG22	2.01	0.42
1:H:23:LYS:HB2	1:H:26:GLU:HB2	2.00	0.42
4:B:1649:TYR:HB3	4:B:1682:TRP:CD1	2.55	0.42
4:B:1890:ILE:HD11	4:B:1939:MET:SD	2.59	0.42
3:A:78:ALA:O	3:A:116:PRO:HB3	2.19	0.42
3:A:320:LYS:HB3	3:A:320:LYS:HE2	1.80	0.42
3:A:373:ASP:OD1	3:A:375:SER:OG	2.23	0.42
3:A:599:THR:HG1	3:A:634:MET:H	1.63	0.42
3:A:47:LYS:HD2	3:A:47:LYS:HA	1.73	0.42
3:A:600:GLY:O	4:B:1687:ARG:NH2	2.53	0.42
2:L:11:GLY:HA3	2:L:30:VAL:HG22	2.01	0.42
4:B:1812:HIS:CE1	4:B:1868:MET:HE1	2.54	0.42
1:H:91:HIS:CE1	3:A:661:ASP:HB2	2.54	0.42
1:H:179:ASN:HA	1:H:233:ARG:HG3	2.00	0.42
3:A:102:ASP:OD1	3:A:102:ASP:N	2.37	0.42

Continued on next page...

Continued from previous page...

Atom-1	Atom-2	Interatomic distance (Å)	Clash overlap (Å)
3:A:192:GLU:HG3	3:A:201:SER:HB2	2.00	0.42
4:B:1590:VAL:HG21	4:B:1640:TYR:HE2	1.84	0.42
4:B:2194:ASP:HB2	4:B:2196:TYR:CE2	2.54	0.42
7:D:6:MAN:H62	7:D:7:MAN:H2	1.76	0.42
4:B:1592:PHE:O	4:B:1593:ARG:NH1	2.51	0.42
4:B:1624:VAL:O	4:B:1725:LYS:NZ	2.31	0.42
3:A:594:LEU:HD21	3:A:647:LEU:HD13	2.01	0.42
4:B:1555:TYR:HD1	4:B:1631:ARG:HB2	1.85	0.42
4:B:1641:SER:O	4:B:1642:LEU:HD12	2.20	0.42
4:B:2175:VAL:HG21	4:B:2188:LEU:HD13	2.01	0.42
3:A:241:ILE:HB	3:A:258:ILE:HG23	2.02	0.42
4:B:2099:LEU:C	4:B:2101:LYS:H	2.26	0.42
4:B:2168:ILE:HG21	4:B:2173:ILE:HD11	2.01	0.42
1:H:81:ALA:HB2	1:H:115:ARG:HH22	1.83	0.41
1:H:92:ASN:HB3	3:A:666:GLU:CD	2.45	0.41
3:A:17:TYR:OH	3:A:35:LYS:HE2	2.20	0.41
3:A:154:PHE:O	3:A:157:GLY:N	2.53	0.41
4:B:2084:TRP:CH2	4:B:2095:LEU:HB2	2.55	0.41
3:A:8:VAL:O	3:A:74:PHE:HA	2.20	0.41
3:A:104:THR:O	3:A:109:LYS:NZ	2.48	0.41
4:B:1815:HIS:HB2	4:B:1859:GLU:HG2	2.01	0.41
4:B:2077:ALA:HB1	4:B:2082:ASN:ND2	2.35	0.41
1:H:16:ILE:N	1:H:143:ARG:O	2.53	0.41
4:B:1594:LYS:HB2	4:B:1618:PRO:HB3	2.03	0.41
4:B:1650:GLU:HG2	4:B:1651:LYS:H	1.85	0.41
4:B:2051:ASN:HB3	4:B:2071:PHE:CD2	2.56	0.41
3:A:330:GLU:O	3:A:330:GLU:HG2	2.20	0.41
3:A:357:ASN:HD21	3:A:544:GLU:C	2.27	0.41
3:A:643:ARG:HD3	3:A:643:ARG:H	1.84	0.41
3:A:151:ILE:HD11	4:B:1865:ARG:HG3	2.03	0.41
3:A:309:LYS:HE2	5:X:3:BMA:O4	2.21	0.41
3:A:403:LEU:H	3:A:403:LEU:HD12	1.84	0.41
4:B:1552:ARG:HB2	4:B:1628:ILE:HA	2.02	0.41
4:B:1804:ASN:HB2	4:B:1836:LEU:HD21	2.03	0.41
4:B:1968:ALA:HA	4:B:1978:ILE:HA	2.01	0.41
3:A:234:SER:HA	4:B:1861:GLY:H	1.86	0.41
4:B:2128:HIS:N	4:B:2174:ARG:O	2.30	0.41
1:H:16:ILE:HG23	1:H:158:LEU:HD12	2.03	0.41
1:H:178:GLN:HG3	1:H:233:ARG:NH1	2.36	0.41
1:H:236:LYS:HA	1:H:239:LYS:HG2	2.02	0.41
3:A:519:VAL:HG22	3:A:585:CYS:HB3	2.02	0.41

Continued on next page...

Continued from previous page...

Atom-1	Atom-2	Interatomic distance (Å)	Clash overlap (Å)
4:B:1705:ALA:HA	4:B:1708:PRO:HG3	2.02	0.41
4:B:1948:ILE:HB	4:B:2004:PHE:CZ	2.56	0.41
4:B:1892:ASP:OD2	4:B:1907:ARG:HB2	2.20	0.41
4:B:1903:TYR:HB2	4:B:1917:TYR:CD2	2.55	0.41
4:B:2068:TRP:CD1	4:B:2081:VAL:HG13	2.56	0.41
4:B:2124:SER:HA	4:B:2152:GLY:H	1.86	0.41
1:H:234:PHE:HB3	1:H:237:TRP:HB3	2.01	0.41
3:A:108:GLU:CD	4:B:2104:LYS:HD2	2.45	0.41
3:A:288:LEU:HD12	3:A:288:LEU:HA	1.92	0.41
4:B:1642:LEU:O	4:B:1655:GLY:HA3	2.21	0.41
4:B:1952:GLY:C	4:B:1996:ALA:HB1	2.46	0.41
4:B:1993:ASN:ND2	4:B:1998:THR:O	2.54	0.41
1:H:131(B):MET:HE2	1:H:230:LYS:HE2	2.03	0.41
3:A:86:PRO:HA	3:A:144:TYR:HA	2.03	0.41
3:A:423:THR:O	3:A:423:THR:OG1	2.39	0.41
4:B:1872:PHE:HE2	4:B:1874:ILE:HG13	1.86	0.41
4:B:1898:SER:HB2	4:B:1934:TRP:CD1	2.56	0.41
3:A:147:HIS:NE2	4:B:1817:HIS:HE1	2.18	0.40
3:A:665:TYS:C	3:A:665:TYS:HD2	2.51	0.40
4:B:1953:ALA:HB3	4:B:2025:THR:HG21	2.02	0.40
4:B:2122:VAL:O	4:B:2153:ASN:N	2.52	0.40
4:B:2125:TYR:CE2	4:B:2152:GLY:HA2	2.56	0.40
1:H:185(A):ASP:HB2	1:H:225:TYR:CZ	2.55	0.40
3:A:313:ARG:HD2	3:A:316:ARG:HD2	2.04	0.40
4:B:1692:SER:HA	4:B:1693:PRO:HA	1.93	0.40
3:A:610:GLU:HG2	4:B:1698:ARG:NH2	2.36	0.40
3:A:658:PRO:HA	3:A:659:ASP:CB	2.38	0.40
3:A:384:ASN:HB3	3:A:387:GLU:HB3	2.02	0.40
4:B:1759:LYS:HG3	4:B:1761:ARG:HH21	1.87	0.40
4:B:1784:ILE:C	4:B:1786:SER:H	2.29	0.40
4:B:1964:GLU:CD	4:B:1989:TYR:HB3	2.46	0.40
3:A:94:LEU:H	3:A:94:LEU:HD12	1.86	0.40
3:A:207:ASN:HB2	3:A:214:MET:SD	2.61	0.40
3:A:536:ASN:OD1	3:A:537:LYS:N	2.55	0.40
4:B:1818:GLY:O	4:B:1819:GLN:NE2	2.54	0.40
4:B:2125:TYR:CB	4:B:2177:PRO:HA	2.52	0.40

There are no symmetry-related clashes.

5.3 Torsion angles

5.3.1 Protein backbone

In the following table, the Percentiles column shows the percent Ramachandran outliers of the chain as a percentile score with respect to all PDB entries followed by that with respect to all EM entries.

The Analysed column shows the number of residues for which the backbone conformation was analysed, and the total number of residues.

Mol	Chain	Analysed	Favoured	Allowed	Outliers	Percentiles	
1	H	232/254 (91%)	219 (94%)	13 (6%)	0	100	100
2	L	135/139 (97%)	126 (93%)	9 (7%)	0	100	100
3	A	667/709 (94%)	607 (91%)	60 (9%)	0	100	100
4	B	649/651 (100%)	595 (92%)	54 (8%)	0	100	100
All	All	1683/1753 (96%)	1547 (92%)	136 (8%)	0	100	100

There are no Ramachandran outliers to report.

5.3.2 Protein sidechains

In the following table, the Percentiles column shows the percent sidechain outliers of the chain as a percentile score with respect to all PDB entries followed by that with respect to all EM entries.

The Analysed column shows the number of residues for which the sidechain conformation was analysed, and the total number of residues.

Mol	Chain	Analysed	Rotameric	Outliers	Percentiles	
1	H	200/217 (92%)	192 (96%)	8 (4%)	28	55
2	L	119/121 (98%)	117 (98%)	2 (2%)	53	71
3	A	603/636 (95%)	565 (94%)	38 (6%)	16	44
4	B	576/576 (100%)	555 (96%)	21 (4%)	31	58
All	All	1498/1550 (97%)	1429 (95%)	69 (5%)	25	53

All (69) residues with a non-rotameric sidechain are listed below:

Mol	Chain	Res	Type
1	H	85	VAL
1	H	157	MET

Continued on next page...

Continued from previous page...

Mol	Chain	Res	Type
1	H	160	VAL
1	H	164	ASP
1	H	182	CYS
1	H	205	ASP
1	H	210	THR
1	H	225	TYR
2	L	71	THR
2	L	99	PHE
3	A	8	VAL
3	A	11	GLN
3	A	13	ILE
3	A	40	GLU
3	A	75	LYS
3	A	84	ILE
3	A	91	TYR
3	A	111	ASP
3	A	129	ASP
3	A	135	ASP
3	A	143	ILE
3	A	153	ASP
3	A	158	LEU
3	A	206	VAL
3	A	211	ASN
3	A	225	ILE
3	A	264	THR
3	A	269	ASN
3	A	272	VAL
3	A	288	LEU
3	A	299	LYS
3	A	311	ILE
3	A	334	ASP
3	A	387	GLU
3	A	391	LEU
3	A	396	ARG
3	A	417	ILE
3	A	420	HIS
3	A	444	ILE
3	A	463	ASP
3	A	474	THR
3	A	492	ILE
3	A	548	ASP
3	A	557	ILE

Continued on next page...

Continued from previous page...

Mol	Chain	Res	Type
3	A	571	THR
3	A	587	VAL
3	A	593	ILE
3	A	656	CYS
4	B	1573	THR
4	B	1634	ASN
4	B	1643	HIS
4	B	1666	PHE
4	B	1717	ILE
4	B	1757	GLU
4	B	1808	SER
4	B	1841	PHE
4	B	1858	THR
4	B	1869	GLN
4	B	1895	ILE
4	B	1954	LYS
4	B	1995	ASP
4	B	2028	LEU
4	B	2040	THR
4	B	2051	ASN
4	B	2106	THR
4	B	2126	THR
4	B	2151	GLU
4	B	2173	ILE
4	B	2186	LEU

Sometimes sidechains can be flipped to improve hydrogen bonding and reduce clashes. All (24) such sidechains are listed below:

Mol	Chain	Res	Type
1	H	129	ASN
2	L	12	HIS
3	A	23	ASN
3	A	87	GLN
3	A	242	HIS
3	A	246	GLN
3	A	251	ASN
3	A	357	ASN
3	A	556	ASN
3	A	591	ASN
3	A	601	HIS
4	B	1550	ASN
4	B	1629	GLN

Continued on next page...

Continued from previous page...

Mol	Chain	Res	Type
4	B	1864	GLN
4	B	1869	GLN
4	B	1936	GLN
4	B	1975	ASN
4	B	2076	ASN
4	B	2082	ASN
4	B	2085	GLN
4	B	2111	GLN
4	B	2153	ASN
4	B	2155	ASN
4	B	2165	ASN

5.3.3 RNA ⓘ

There are no RNA molecules in this entry.

5.4 Non-standard residues in protein, DNA, RNA chains ⓘ

1 non-standard protein/DNA/RNA residue is modelled in this entry.

In the following table, the Counts columns list the number of bonds (or angles) for which Mogul statistics could be retrieved, the number of bonds (or angles) that are observed in the model and the number of bonds (or angles) that are defined in the Chemical Component Dictionary. The Link column lists molecule types, if any, to which the group is linked. The Z score for a bond length (or angle) is the number of standard deviations the observed value is removed from the expected value. A bond length (or angle) with $|Z| > 2$ is considered an outlier worth inspection. RMSZ is the root-mean-square of all Z scores of the bond lengths (or angles).

Mol	Type	Chain	Res	Link	Bond lengths			Bond angles		
					Counts	RMSZ	$\# Z > 2$	Counts	RMSZ	$\# Z > 2$
3	TYS	A	665	3	15,16,17	1.61	2 (13%)	15,22,24	0.95	0

In the following table, the Chirals column lists the number of chiral outliers, the number of chiral centers analysed, the number of these observed in the model and the number defined in the Chemical Component Dictionary. Similar counts are reported in the Torsion and Rings columns. '-' means no outliers of that kind were identified.

Mol	Type	Chain	Res	Link	Chirals	Torsions	Rings
3	TYS	A	665	3	-	2/10/11/13	0/1/1/1

All (2) bond length outliers are listed below:

Mol	Chain	Res	Type	Atoms	Z	Observed(Å)	Ideal(Å)
3	A	665	TYS	OH-S	5.15	1.68	1.58
3	A	665	TYS	OH-CZ	-3.13	1.37	1.42

There are no bond angle outliers.

There are no chirality outliers.

All (2) torsion outliers are listed below:

Mol	Chain	Res	Type	Atoms
3	A	665	TYS	CA-CB-CG-CD1
3	A	665	TYS	CA-CB-CG-CD2

There are no ring outliers.

1 monomer is involved in 2 short contacts:

Mol	Chain	Res	Type	Clashes	Symm-Clashes
3	A	665	TYS	2	0

5.5 Carbohydrates [i](#)

20 monosaccharides are modelled in this entry.

In the following table, the Counts columns list the number of bonds (or angles) for which Mogul statistics could be retrieved, the number of bonds (or angles) that are observed in the model and the number of bonds (or angles) that are defined in the Chemical Component Dictionary. The Link column lists molecule types, if any, to which the group is linked. The Z score for a bond length (or angle) is the number of standard deviations the observed value is removed from the expected value. A bond length (or angle) with $|Z| > 2$ is considered an outlier worth inspection. RMSZ is the root-mean-square of all Z scores of the bond lengths (or angles).

Mol	Type	Chain	Res	Link	Bond lengths			Bond angles		
					Counts	RMSZ	$\# Z > 2$	Counts	RMSZ	$\# Z > 2$
6	NAG	C	1	6,4	14,14,15	0.77	0	17,19,21	1.23	3 (17%)
6	NAG	C	2	6	14,14,15	0.75	0	17,19,21	1.53	2 (11%)
6	BMA	C	3	6	11,11,12	0.82	0	15,15,17	2.03	2 (13%)
6	MAN	C	4	6	11,11,12	0.75	0	15,15,17	1.06	1 (6%)
6	MAN	C	5	6	11,11,12	0.69	0	15,15,17	1.28	1 (6%)
7	NAG	D	1	3,7	14,14,15	0.79	0	17,19,21	2.90	6 (35%)
7	NAG	D	2	7	14,14,15	0.75	0	17,19,21	1.28	2 (11%)
7	BMA	D	3	7	11,11,12	0.84	0	15,15,17	2.29	3 (20%)
7	MAN	D	4	7	11,11,12	0.60	0	15,15,17	1.88	1 (6%)

Mol	Type	Chain	Res	Link	Bond lengths			Bond angles		
					Counts	RMSZ	# Z > 2	Counts	RMSZ	# Z > 2
7	MAN	D	5	7	11,11,12	0.71	0	15,15,17	1.07	1 (6%)
7	MAN	D	6	7	11,11,12	0.81	0	15,15,17	1.07	0
7	MAN	D	7	7	11,11,12	0.79	0	15,15,17	0.98	0
8	NAG	E	1	4,8	14,14,15	0.83	0	17,19,21	2.00	2 (11%)
8	FUC	E	2	8	10,10,11	0.87	1 (10%)	14,14,16	1.05	0
5	NAG	X	1	3,5	14,14,15	0.71	0	17,19,21	1.82	3 (17%)
5	NAG	X	2	5	14,14,15	0.75	0	17,19,21	1.04	1 (5%)
5	BMA	X	3	5	11,11,12	0.84	0	15,15,17	2.50	4 (26%)
5	MAN	X	4	5	11,11,12	0.76	0	15,15,17	1.23	1 (6%)
5	MAN	X	5	5	11,11,12	0.77	0	15,15,17	0.90	0
5	FUC	X	6	5	10,10,11	1.01	1 (10%)	14,14,16	1.18	2 (14%)

In the following table, the Chirals column lists the number of chiral outliers, the number of chiral centers analysed, the number of these observed in the model and the number defined in the Chemical Component Dictionary. Similar counts are reported in the Torsion and Rings columns. '-' means no outliers of that kind were identified.

Mol	Type	Chain	Res	Link	Chirals	Torsions	Rings
6	NAG	C	1	6,4	-	2/6/23/26	0/1/1/1
6	NAG	C	2	6	-	0/6/23/26	0/1/1/1
6	BMA	C	3	6	-	2/2/19/22	0/1/1/1
6	MAN	C	4	6	-	0/2/19/22	0/1/1/1
6	MAN	C	5	6	-	2/2/19/22	0/1/1/1
7	NAG	D	1	3,7	-	3/6/23/26	0/1/1/1
7	NAG	D	2	7	-	0/6/23/26	0/1/1/1
7	BMA	D	3	7	-	2/2/19/22	0/1/1/1
7	MAN	D	4	7	-	2/2/19/22	0/1/1/1
7	MAN	D	5	7	-	2/2/19/22	0/1/1/1
7	MAN	D	6	7	-	0/2/19/22	0/1/1/1
7	MAN	D	7	7	-	1/2/19/22	0/1/1/1
8	NAG	E	1	4,8	-	2/6/23/26	0/1/1/1
8	FUC	E	2	8	-	-	0/1/1/1
5	NAG	X	1	3,5	-	1/6/23/26	0/1/1/1
5	NAG	X	2	5	-	0/6/23/26	0/1/1/1
5	BMA	X	3	5	-	0/2/19/22	0/1/1/1
5	MAN	X	4	5	-	0/2/19/22	0/1/1/1
5	MAN	X	5	5	-	2/2/19/22	0/1/1/1
5	FUC	X	6	5	-	-	0/1/1/1

All (2) bond length outliers are listed below:

Mol	Chain	Res	Type	Atoms	Z	Observed(Å)	Ideal(Å)
5	X	6	FUC	O5-C1	-2.66	1.39	1.43
8	E	2	FUC	O5-C1	-2.03	1.40	1.43

All (35) bond angle outliers are listed below:

Mol	Chain	Res	Type	Atoms	Z	Observed(°)	Ideal(°)
7	D	1	NAG	C2-N2-C7	8.91	134.84	122.90
5	X	3	BMA	C1-O5-C5	7.37	122.07	112.19
8	E	1	NAG	C1-O5-C5	7.18	121.81	112.19
7	D	3	BMA	C1-O5-C5	6.82	121.32	112.19
7	D	4	MAN	C1-O5-C5	6.42	120.79	112.19
6	C	3	BMA	C1-O5-C5	6.26	120.58	112.19
5	X	1	NAG	O4-C4-C5	4.48	120.36	109.32
5	X	1	NAG	C1-O5-C5	4.40	118.09	112.19
6	C	2	NAG	O5-C1-C2	-4.37	104.53	111.29
7	D	1	NAG	C4-C3-C2	4.14	117.09	111.02
7	D	1	NAG	O5-C1-C2	-3.91	105.24	111.29
7	D	2	NAG	O5-C1-C2	-3.48	105.91	111.29
5	X	3	BMA	C3-C4-C5	3.45	116.49	110.23
6	C	5	MAN	C1-O5-C5	3.44	116.79	112.19
5	X	4	MAN	C1-O5-C5	3.41	116.75	112.19
7	D	1	NAG	C8-C7-N2	3.22	121.45	116.12
6	C	4	MAN	C1-O5-C5	3.03	116.25	112.19
7	D	5	MAN	C1-O5-C5	2.98	116.17	112.19
7	D	3	BMA	C3-C4-C5	2.89	115.48	110.23
6	C	1	NAG	C2-N2-C7	2.69	126.51	122.90
5	X	2	NAG	C1-O5-C5	2.57	115.64	112.19
6	C	1	NAG	O3-C3-C2	-2.54	104.12	109.40
5	X	3	BMA	C2-C3-C4	2.53	115.30	110.86
7	D	2	NAG	O3-C3-C2	-2.50	104.20	109.40
7	D	1	NAG	O7-C7-C8	-2.50	117.61	122.05
5	X	3	BMA	O5-C5-C4	2.45	116.78	110.83
8	E	1	NAG	C2-N2-C7	2.39	126.10	122.90
7	D	1	NAG	C3-C4-C5	2.26	114.32	110.23
6	C	2	NAG	O4-C4-C3	-2.17	105.26	110.38
7	D	3	BMA	O4-C4-C3	-2.17	105.26	110.38
5	X	6	FUC	O2-C2-C3	2.10	114.50	110.15
6	C	1	NAG	O3-C3-C4	2.08	115.29	110.38
6	C	3	BMA	C2-C3-C4	2.08	114.53	110.86
5	X	1	NAG	C4-C3-C2	-2.04	108.03	111.02
5	X	6	FUC	O5-C1-C2	-2.02	105.98	110.79

There are no chirality outliers.

All (21) torsion outliers are listed below:

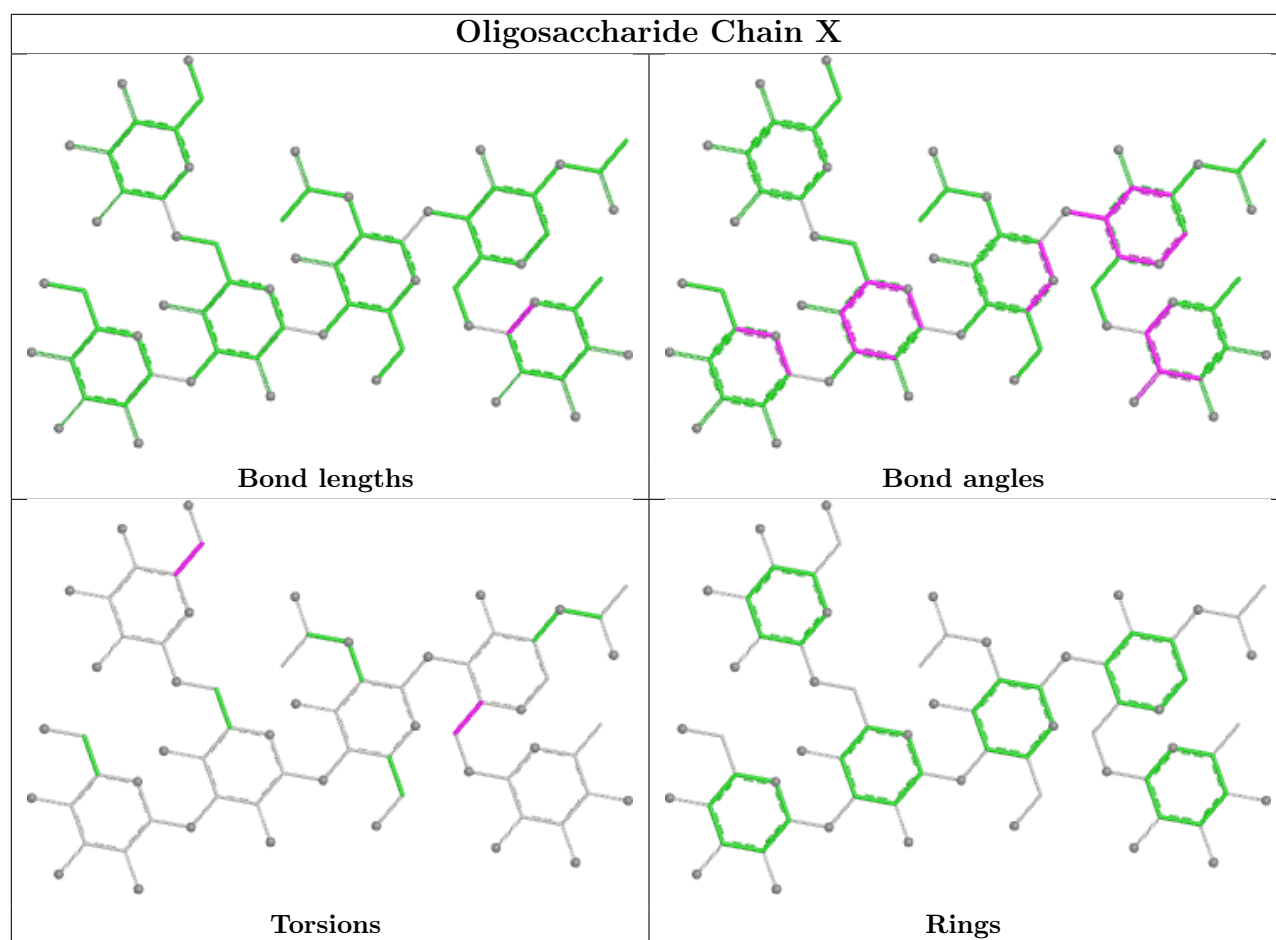
Mol	Chain	Res	Type	Atoms
5	X	5	MAN	O5-C5-C6-O6
6	C	5	MAN	C4-C5-C6-O6
5	X	5	MAN	C4-C5-C6-O6
7	D	5	MAN	O5-C5-C6-O6
8	E	1	NAG	O5-C5-C6-O6
7	D	3	BMA	C4-C5-C6-O6
6	C	1	NAG	C8-C7-N2-C2
6	C	1	NAG	O7-C7-N2-C2
7	D	1	NAG	C8-C7-N2-C2
7	D	1	NAG	O7-C7-N2-C2
8	E	1	NAG	C4-C5-C6-O6
6	C	5	MAN	O5-C5-C6-O6
6	C	3	BMA	O5-C5-C6-O6
7	D	5	MAN	C4-C5-C6-O6
7	D	4	MAN	C4-C5-C6-O6
7	D	7	MAN	O5-C5-C6-O6
7	D	1	NAG	C3-C2-N2-C7
7	D	3	BMA	O5-C5-C6-O6
5	X	1	NAG	O5-C5-C6-O6
7	D	4	MAN	O5-C5-C6-O6
6	C	3	BMA	C4-C5-C6-O6

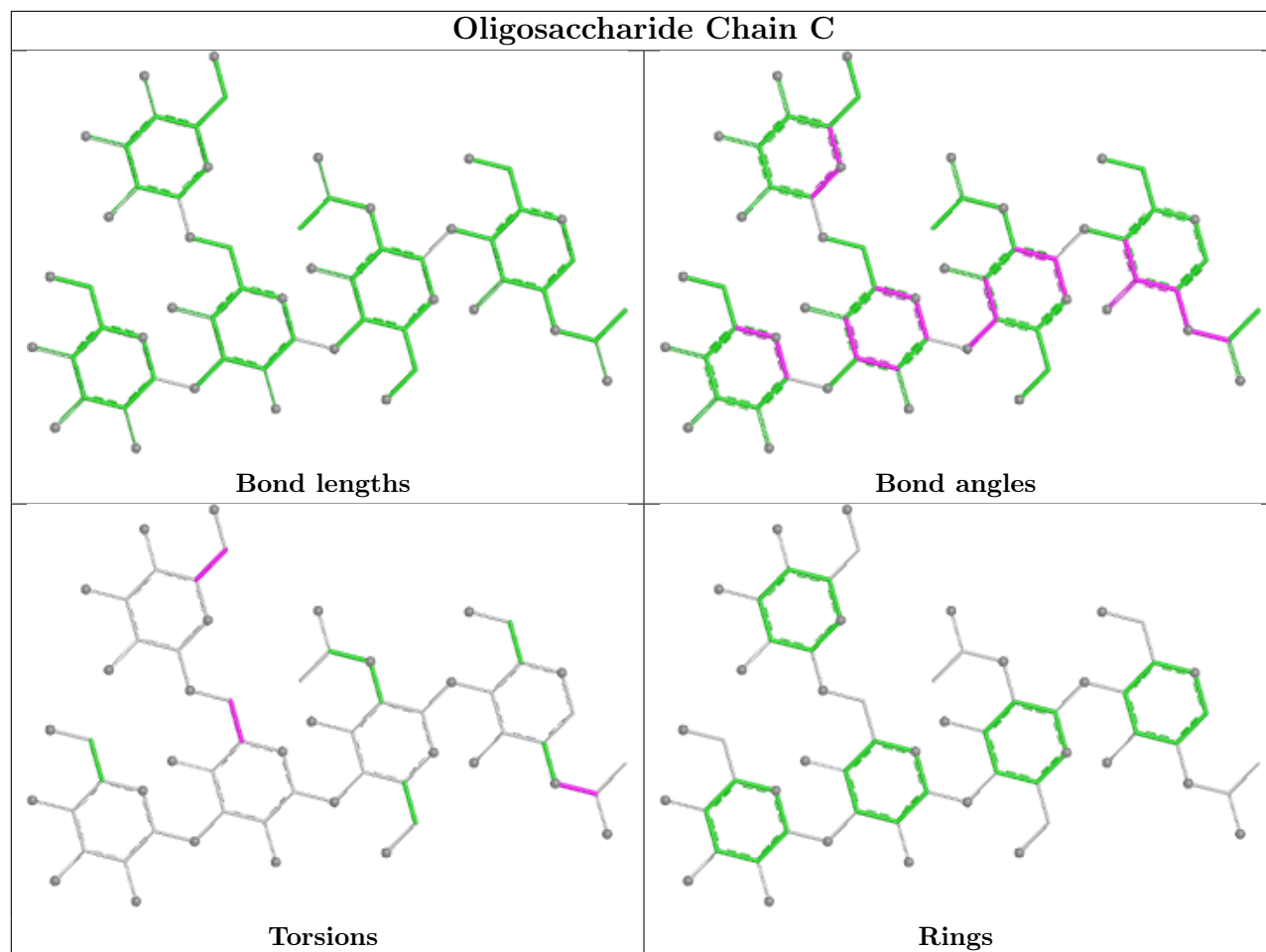
There are no ring outliers.

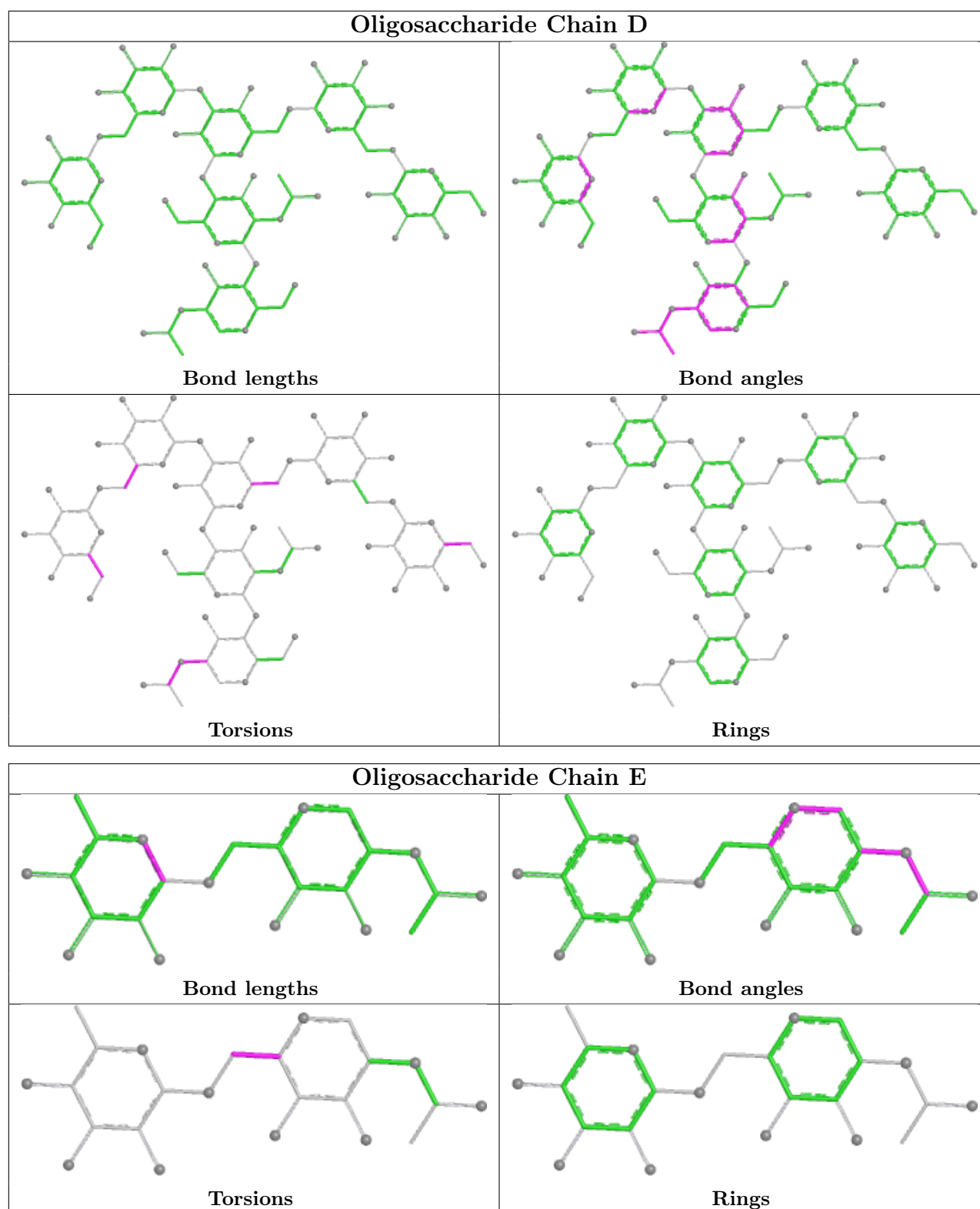
9 monomers are involved in 7 short contacts:

Mol	Chain	Res	Type	Clashes	Symm-Clashes
5	X	4	MAN	1	0
7	D	7	MAN	1	0
6	C	4	MAN	1	0
8	E	1	NAG	1	0
7	D	1	NAG	1	0
6	C	5	MAN	1	0
5	X	3	BMA	2	0
7	D	2	NAG	1	0
7	D	6	MAN	1	0

The following is a two-dimensional graphical depiction of Mogul quality analysis of bond lengths, bond angles, torsion angles, and ring geometry for oligosaccharide.







5.6 Ligand geometry [i](#)

Of 5 ligands modelled in this entry, 4 are monoatomic - leaving 1 for Mogul analysis.

In the following table, the Counts columns list the number of bonds (or angles) for which Mogul

statistics could be retrieved, the number of bonds (or angles) that are observed in the model and the number of bonds (or angles) that are defined in the Chemical Component Dictionary. The Link column lists molecule types, if any, to which the group is linked. The Z score for a bond length (or angle) is the number of standard deviations the observed value is removed from the expected value. A bond length (or angle) with $|Z| > 2$ is considered an outlier worth inspection. RMSZ is the root-mean-square of all Z scores of the bond lengths (or angles).

Mol	Type	Chain	Res	Link	Bond lengths			Bond angles		
					Counts	RMSZ	# $ Z > 2$	Counts	RMSZ	# $ Z > 2$
11	0GJ	H	303	1	23,24,25	1.06	1 (4%)	26,30,31	3.21	2 (7%)

In the following table, the Chirals column lists the number of chiral outliers, the number of chiral centers analysed, the number of these observed in the model and the number defined in the Chemical Component Dictionary. Similar counts are reported in the Torsion and Rings columns. '-' means no outliers of that kind were identified.

Mol	Type	Chain	Res	Link	Chirals	Torsions	Rings
11	0GJ	H	303	1	-	8/29/29/31	-

All (1) bond length outliers are listed below:

Mol	Chain	Res	Type	Atoms	Z	Observed(Å)	Ideal(Å)
11	H	303	0GJ	C1-N2	4.45	1.43	1.34

All (2) bond angle outliers are listed below:

Mol	Chain	Res	Type	Atoms	Z	Observed(°)	Ideal(°)
11	H	303	0GJ	CA2-N2-C1	-14.29	99.58	123.40
11	H	303	0GJ	CA1-C1-N2	-7.52	98.26	116.16

There are no chirality outliers.

All (8) torsion outliers are listed below:

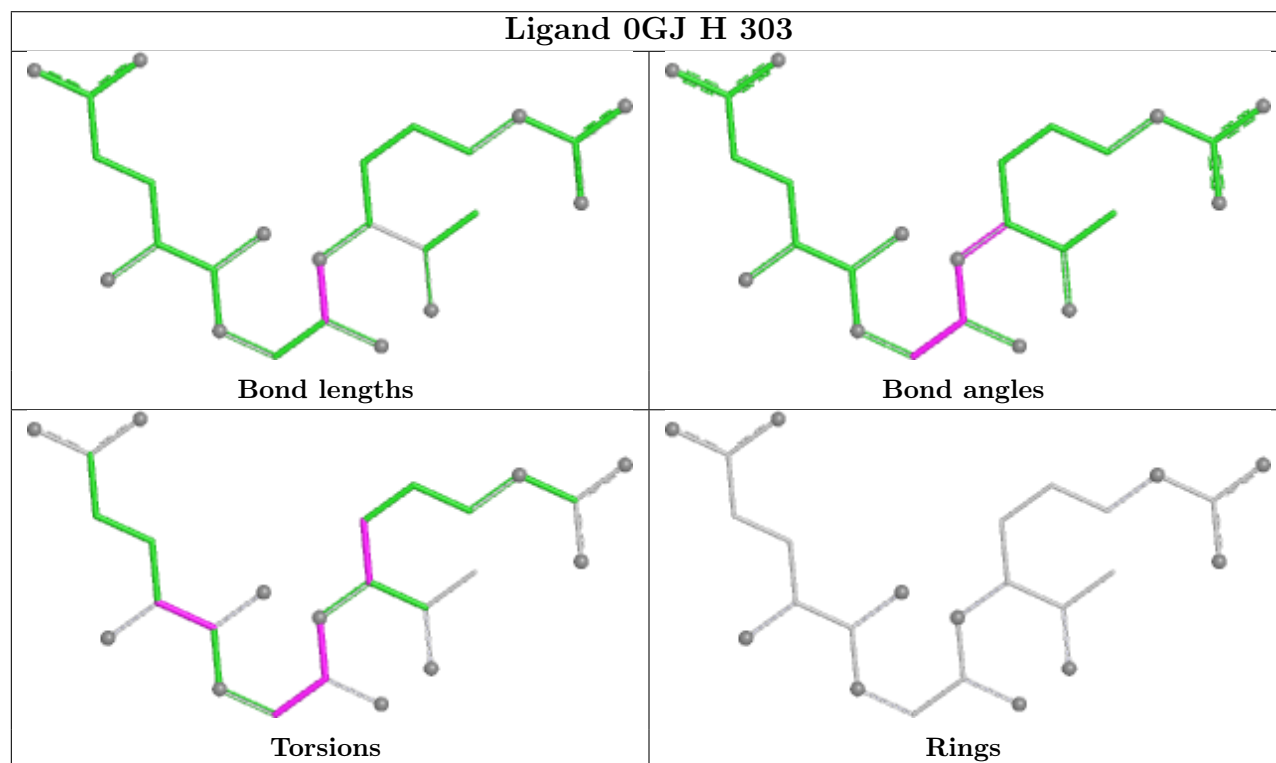
Mol	Chain	Res	Type	Atoms
11	H	303	0GJ	O-C-CA-N
11	H	303	0GJ	N2-CA2-CB1-CG1
11	H	303	0GJ	O1-C1-N2-CA2
11	H	303	0GJ	C2-CA2-CB1-CG1
11	H	303	0GJ	O1-C1-CA1-N1
11	H	303	0GJ	O-C-CA-CB
11	H	303	0GJ	N1-C-CA-CB
11	H	303	0GJ	N1-C-CA-N

There are no ring outliers.

1 monomer is involved in 4 short contacts:

Mol	Chain	Res	Type	Clashes	Symm-Clashes
11	H	303	0GJ	4	0

The following is a two-dimensional graphical depiction of Mogul quality analysis of bond lengths, bond angles, torsion angles, and ring geometry for all instances of the Ligand of Interest. In addition, ligands with molecular weight > 250 and outliers as shown on the validation Tables will also be included. For torsion angles, if less than 5% of the Mogul distribution of torsion angles is within 10 degrees of the torsion angle in question, then that torsion angle is considered an outlier. Any bond that is central to one or more torsion angles identified as an outlier by Mogul will be highlighted in the graph. For rings, the root-mean-square deviation (RMSD) between the ring in question and similar rings identified by Mogul is calculated over all ring torsion angles. If the average RMSD is greater than 60 degrees and the minimal RMSD between the ring in question and any Mogul-identified rings is also greater than 60 degrees, then that ring is considered an outlier. The outliers are highlighted in purple. The color gray indicates Mogul did not find sufficient equivalents in the CSD to analyse the geometry.



5.7 Other polymers ⓘ

There are no such residues in this entry.

5.8 Polymer linkage issues ⓘ

There are no chain breaks in this entry.

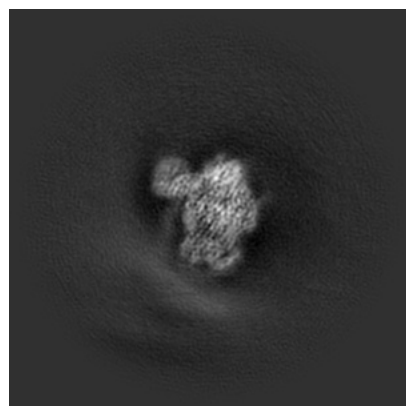
6 Map visualisation [i](#)

This section contains visualisations of the EMDB entry EMD-52585. These allow visual inspection of the internal detail of the map and identification of artifacts.

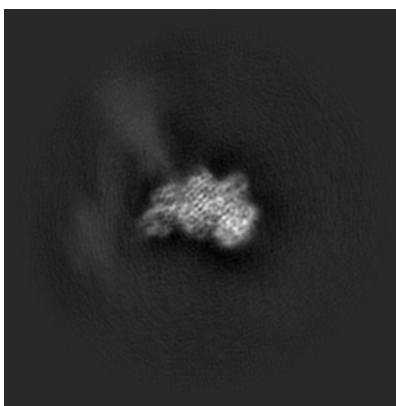
Images derived from a raw map, generated by summing the deposited half-maps, are presented below the corresponding image components of the primary map to allow further visual inspection and comparison with those of the primary map.

6.1 Orthogonal projections [i](#)

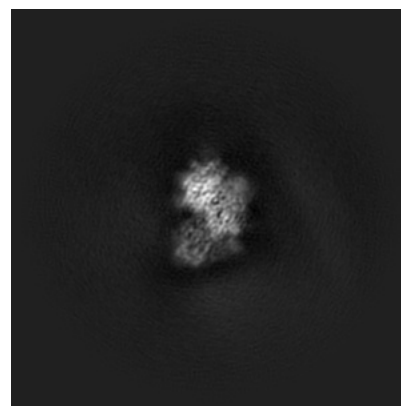
6.1.1 Primary map



X

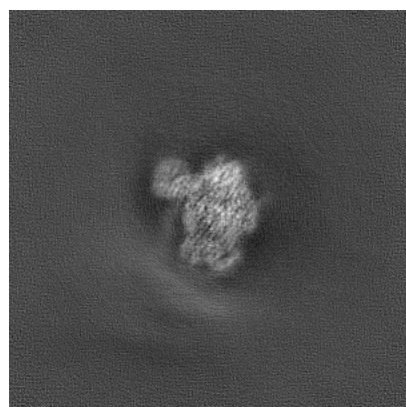


Y

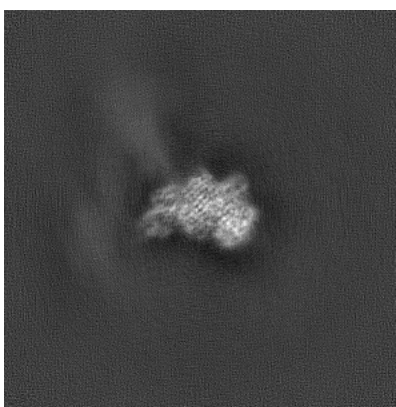


Z

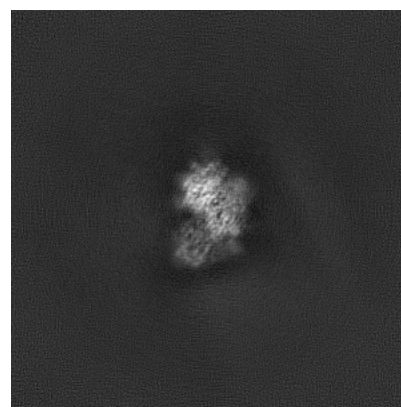
6.1.2 Raw map



X



Y

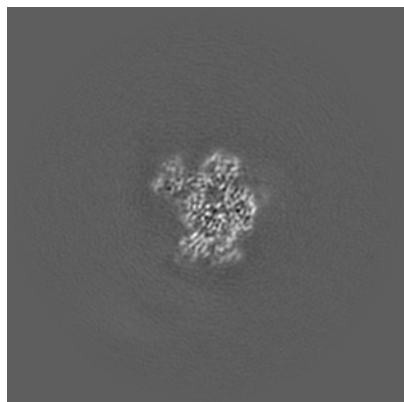


Z

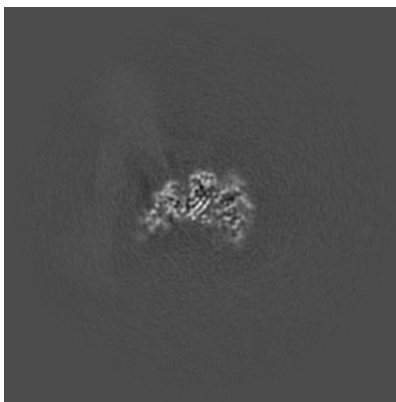
The images above show the map projected in three orthogonal directions.

6.2 Central slices [i](#)

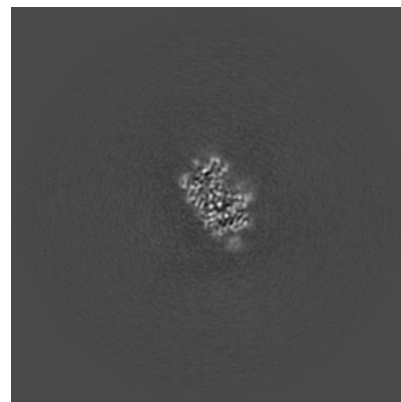
6.2.1 Primary map



X Index: 220

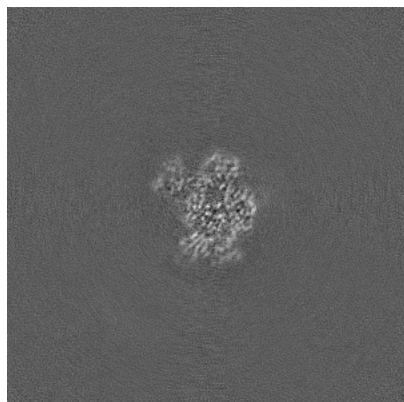


Y Index: 220

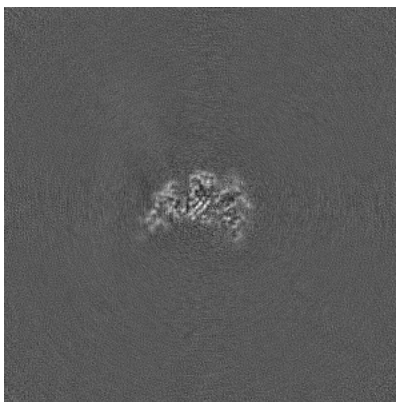


Z Index: 220

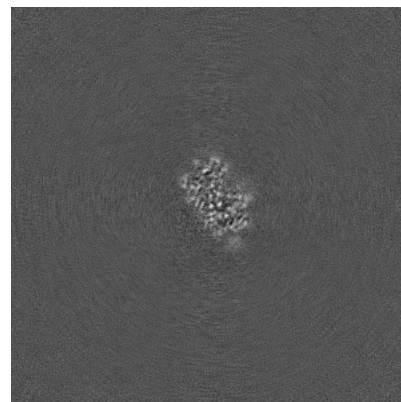
6.2.2 Raw map



X Index: 220



Y Index: 220

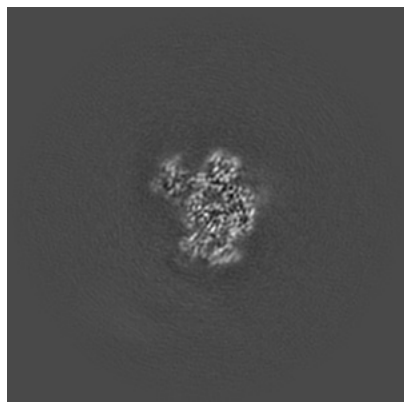


Z Index: 220

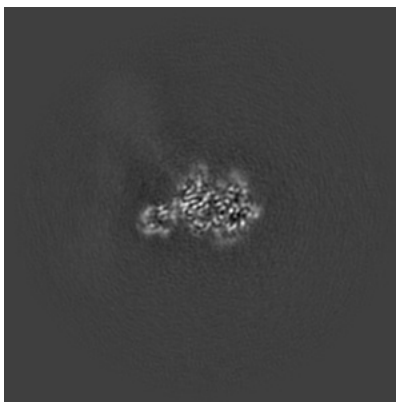
The images above show central slices of the map in three orthogonal directions.

6.3 Largest variance slices [i](#)

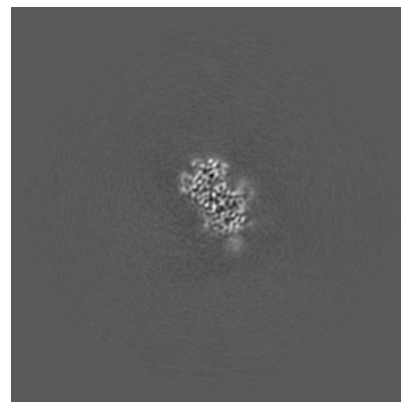
6.3.1 Primary map



X Index: 218

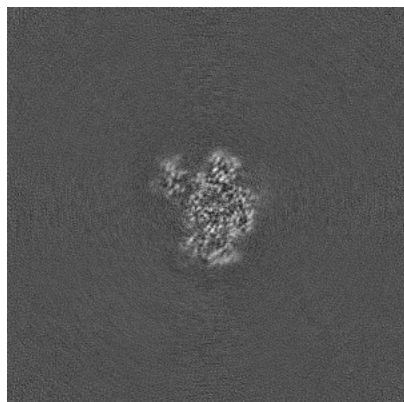


Y Index: 234

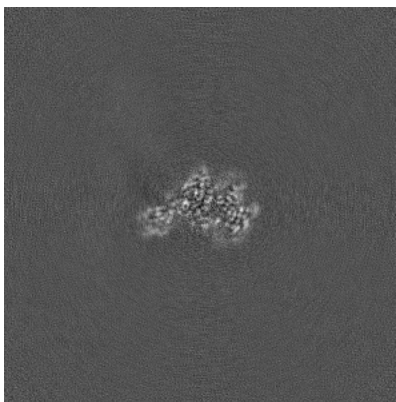


Z Index: 215

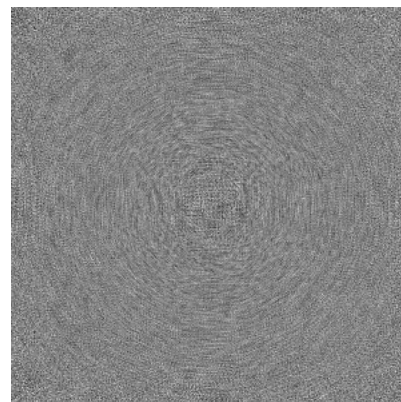
6.3.2 Raw map



X Index: 217



Y Index: 229



Z Index: 0

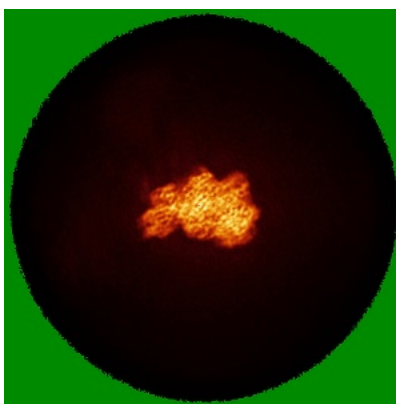
The images above show the largest variance slices of the map in three orthogonal directions.

6.4 Orthogonal standard-deviation projections (False-color) [i](#)

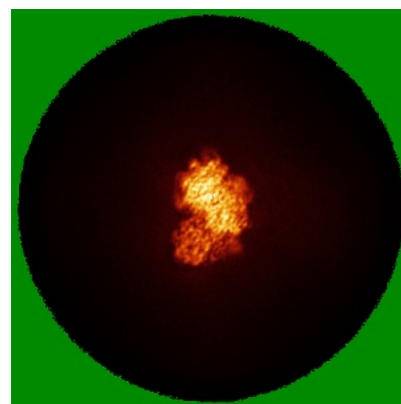
6.4.1 Primary map



X

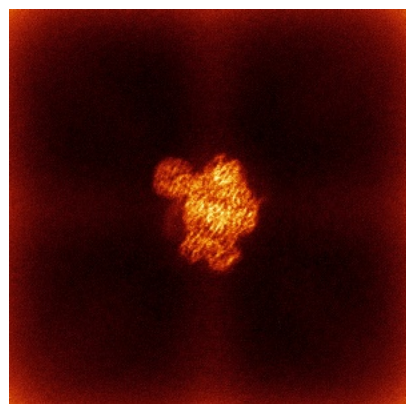


Y

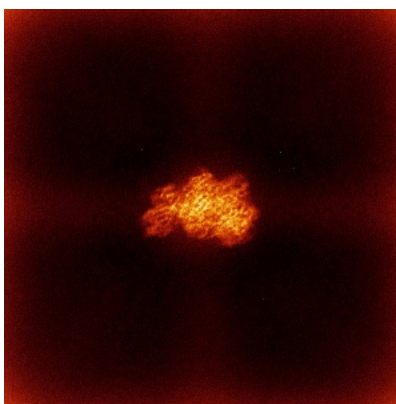


Z

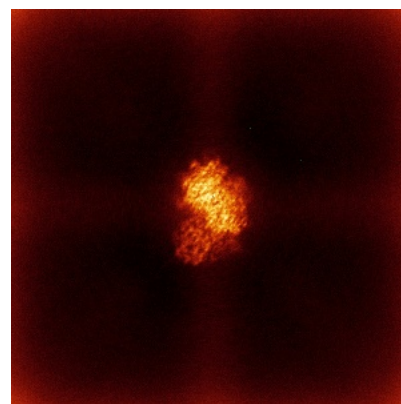
6.4.2 Raw map



X



Y

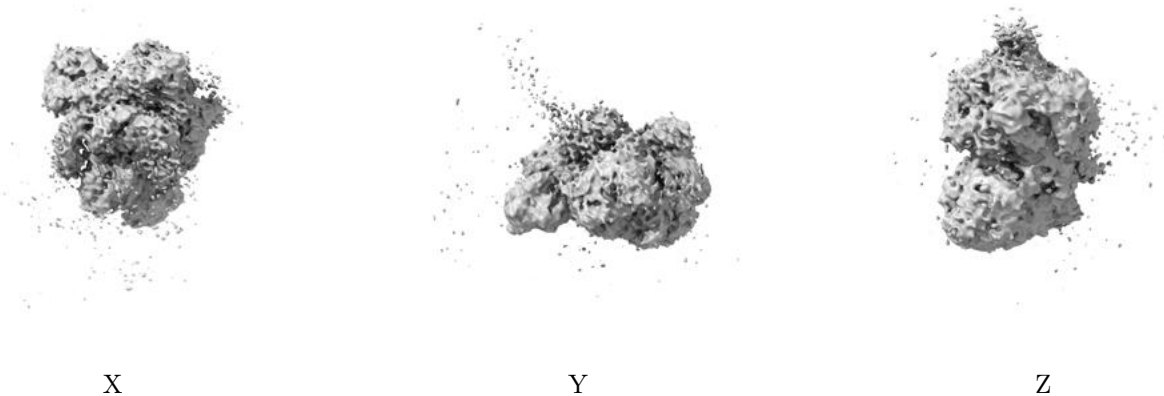


Z

The images above show the map standard deviation projections with false color in three orthogonal directions. Minimum values are shown in green, max in blue, and dark to light orange shades represent small to large values respectively.

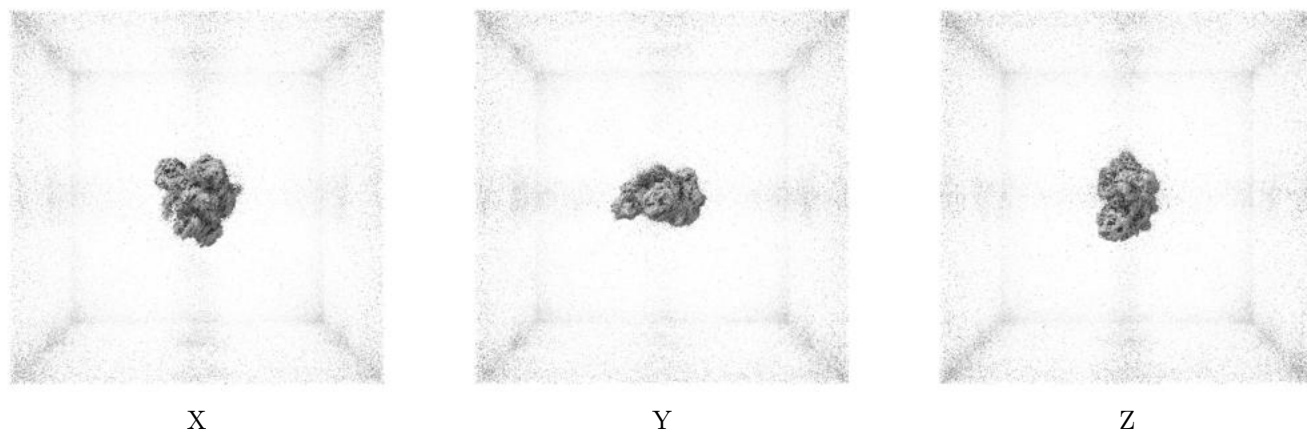
6.5 Orthogonal surface views [i](#)

6.5.1 Primary map



The images above show the 3D surface view of the map at the recommended contour level 0.0252. These images, in conjunction with the slice images, may facilitate assessment of whether an appropriate contour level has been provided.

6.5.2 Raw map



These images show the 3D surface of the raw map. The raw map's contour level was selected so that its surface encloses the same volume as the primary map does at its recommended contour level.

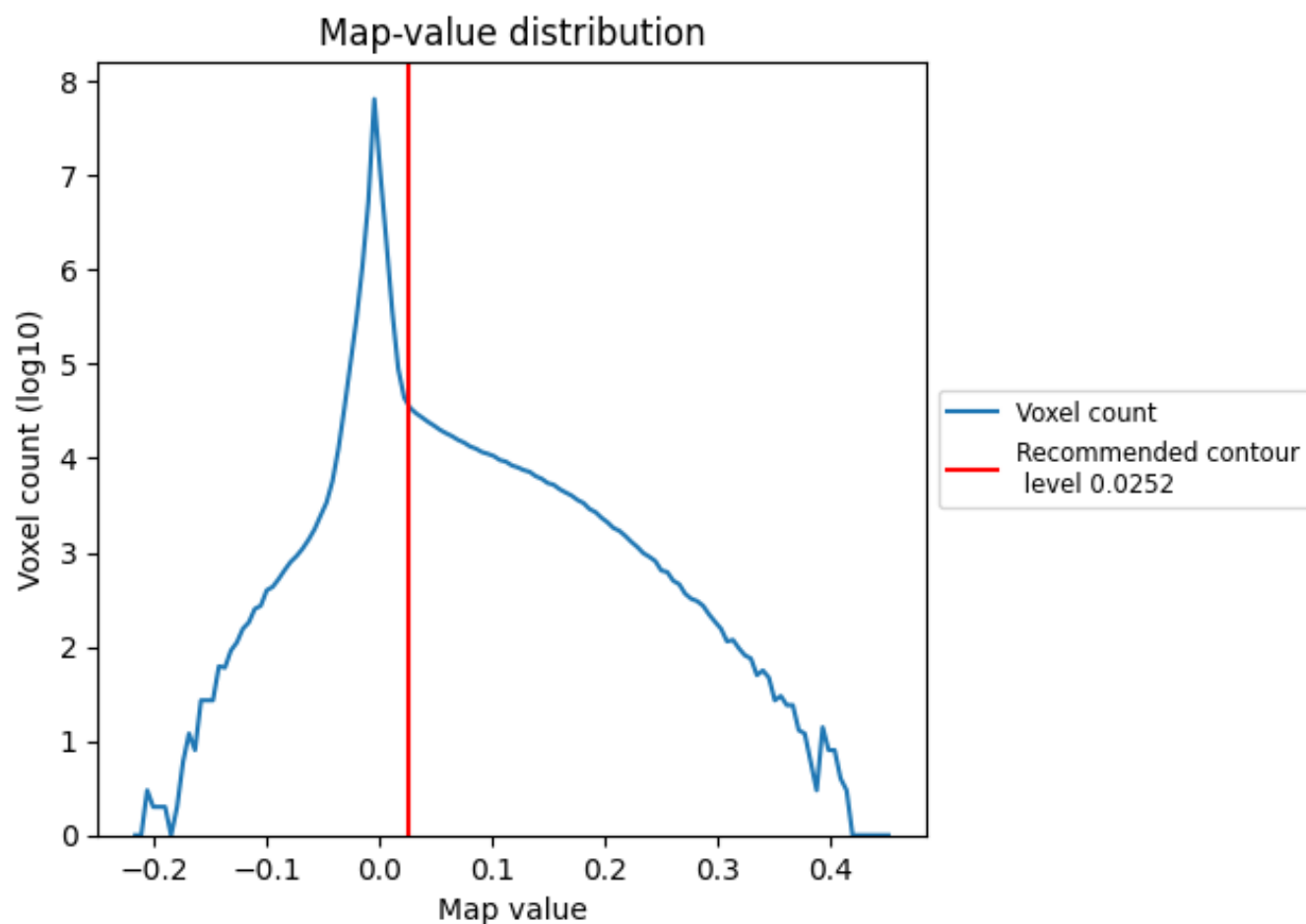
6.6 Mask visualisation [i](#)

This section was not generated. No masks/segmentation were deposited.

7 Map analysis [i](#)

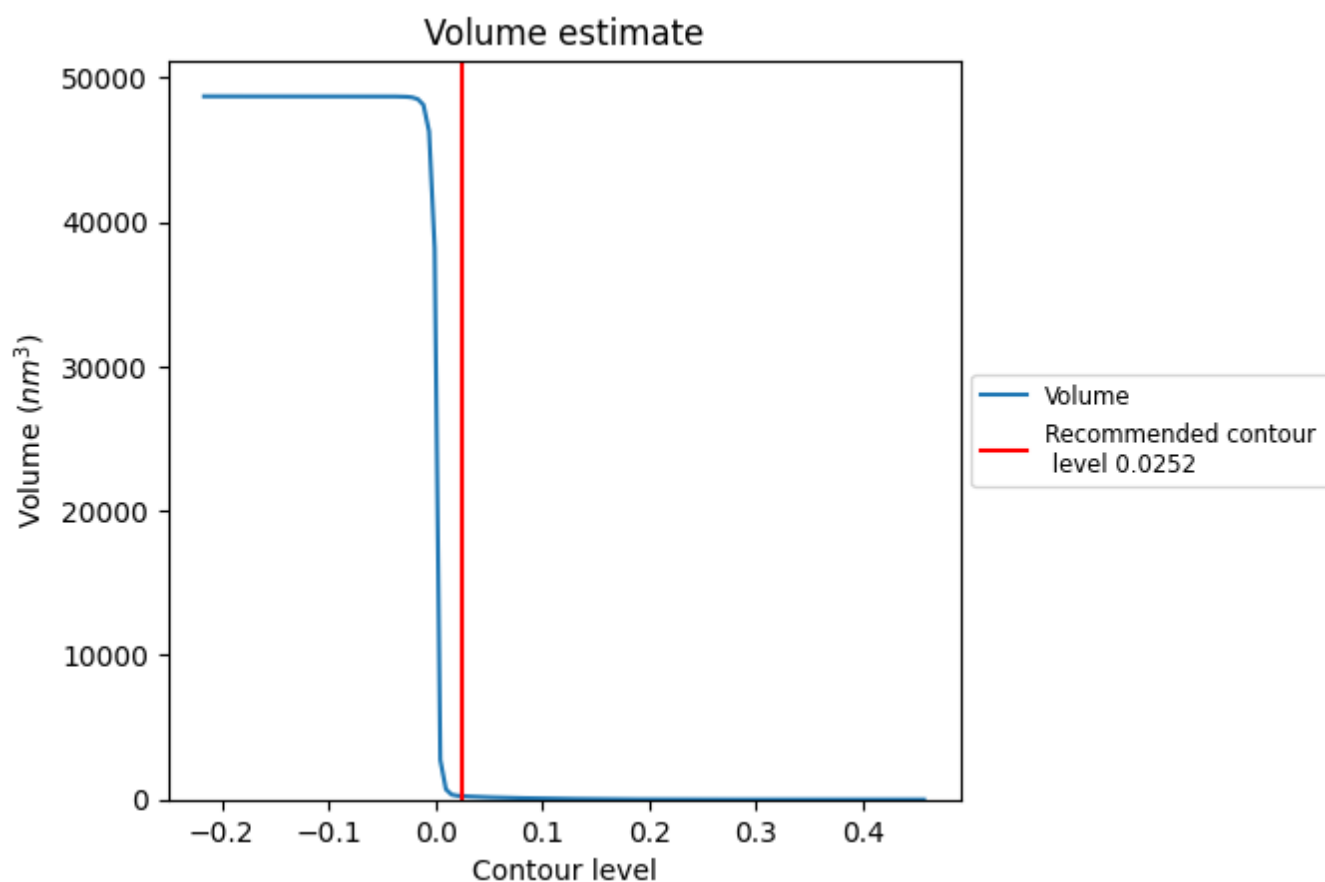
This section contains the results of statistical analysis of the map.

7.1 Map-value distribution [i](#)



The map-value distribution is plotted in 128 intervals along the x-axis. The y-axis is logarithmic. A spike in this graph at zero usually indicates that the volume has been masked.

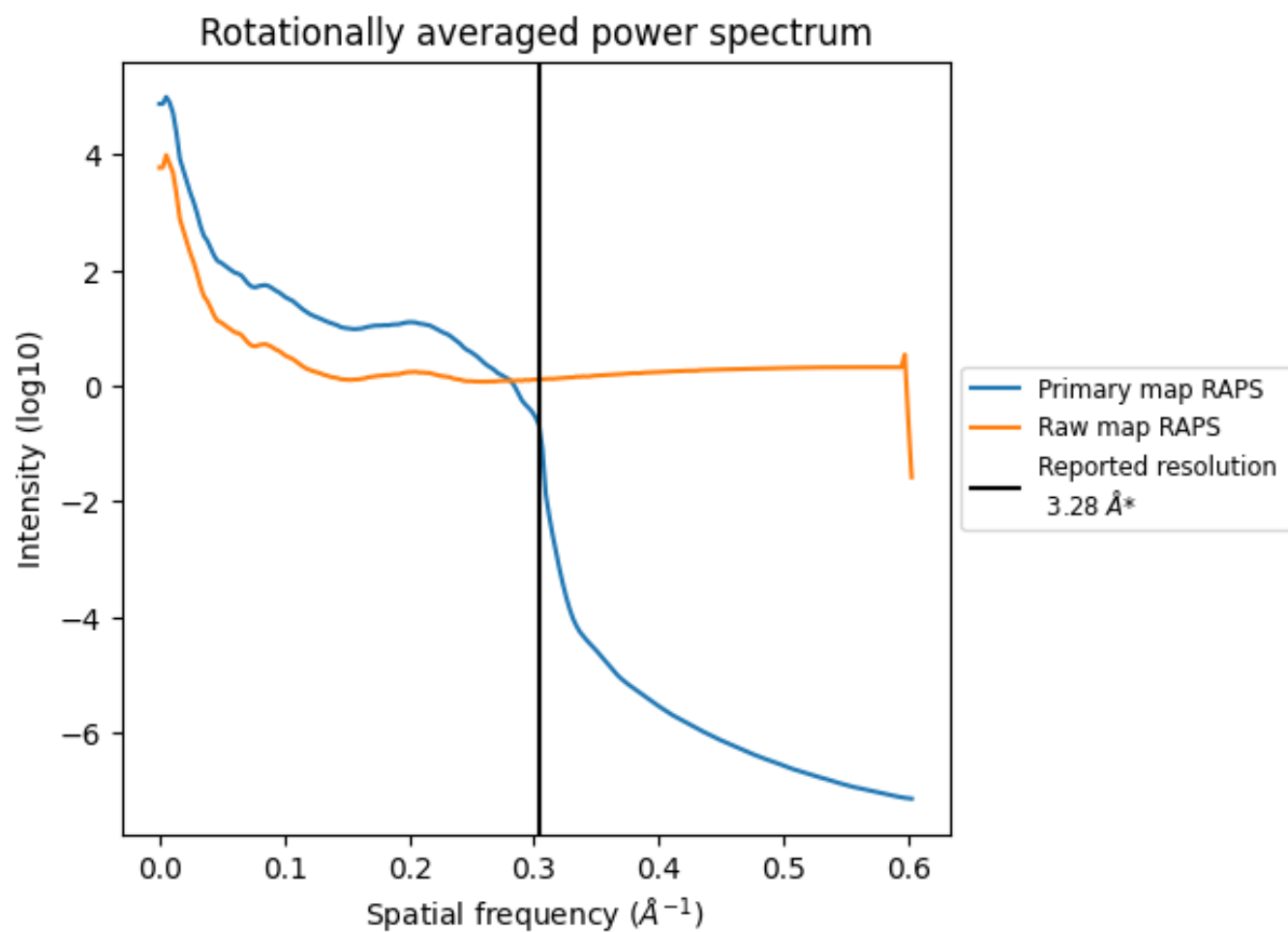
7.2 Volume estimate [i](#)



The volume at the recommended contour level is 239 nm³; this corresponds to an approximate mass of 216 kDa.

The volume estimate graph shows how the enclosed volume varies with the contour level. The recommended contour level is shown as a vertical line and the intersection between the line and the curve gives the volume of the enclosed surface at the given level.

7.3 Rotationally averaged power spectrum ⓘ

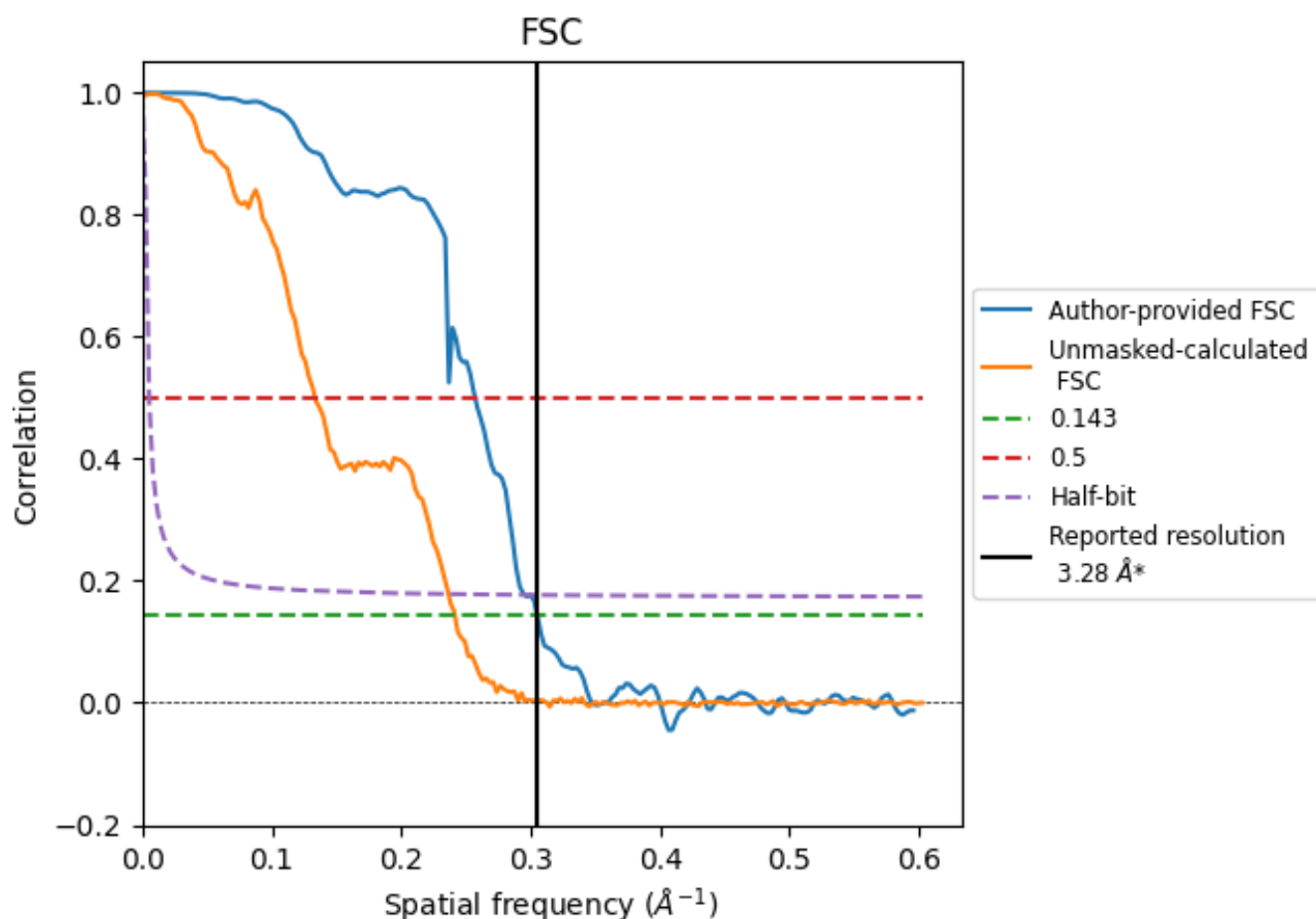


*Reported resolution corresponds to spatial frequency of 0.305 \AA^{-1}

8 Fourier-Shell correlation [i](#)

Fourier-Shell Correlation (FSC) is the most commonly used method to estimate the resolution of single-particle and subtomogram-averaged maps. The shape of the curve depends on the imposed symmetry, mask and whether or not the two 3D reconstructions used were processed from a common reference. The reported resolution is shown as a black line. A curve is displayed for the half-bit criterion in addition to lines showing the 0.143 gold standard cut-off and 0.5 cut-off.

8.1 FSC [i](#)



*Reported resolution corresponds to spatial frequency of 0.305 \AA^{-1}

8.2 Resolution estimates [i](#)

Resolution estimate (Å)	Estimation criterion (FSC cut-off)		
	0.143	0.5	Half-bit
Reported by author	3.28	-	-
Author-provided FSC curve	3.28	3.89	3.39
Unmasked-calculated*	4.14	7.49	4.23

*Resolution estimate based on FSC curve calculated by comparison of deposited half-maps. The value from deposited half-maps intersecting FSC 0.143 CUT-OFF 4.14 differs from the reported value 3.28 by more than 10 %

9 Map-model fit [i](#)

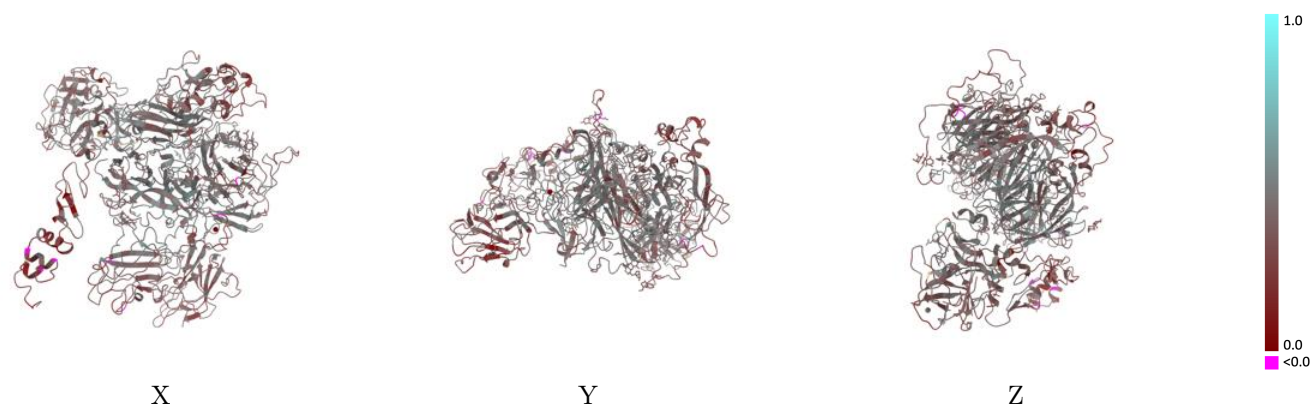
This section contains information regarding the fit between EMDB map EMD-52585 and PDB model 9I2H. Per-residue inclusion information can be found in section 3 on page 8.

9.1 Map-model overlay [i](#)



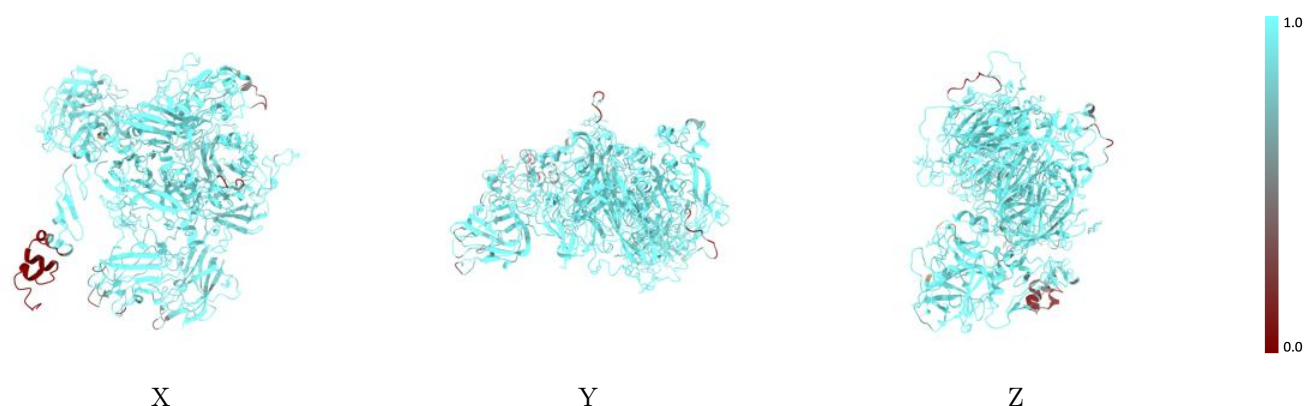
The images above show the 3D surface view of the map at the recommended contour level 0.0252 at 50% transparency in yellow overlaid with a ribbon representation of the model coloured in blue. These images allow for the visual assessment of the quality of fit between the atomic model and the map.

9.2 Q-score mapped to coordinate model [i](#)



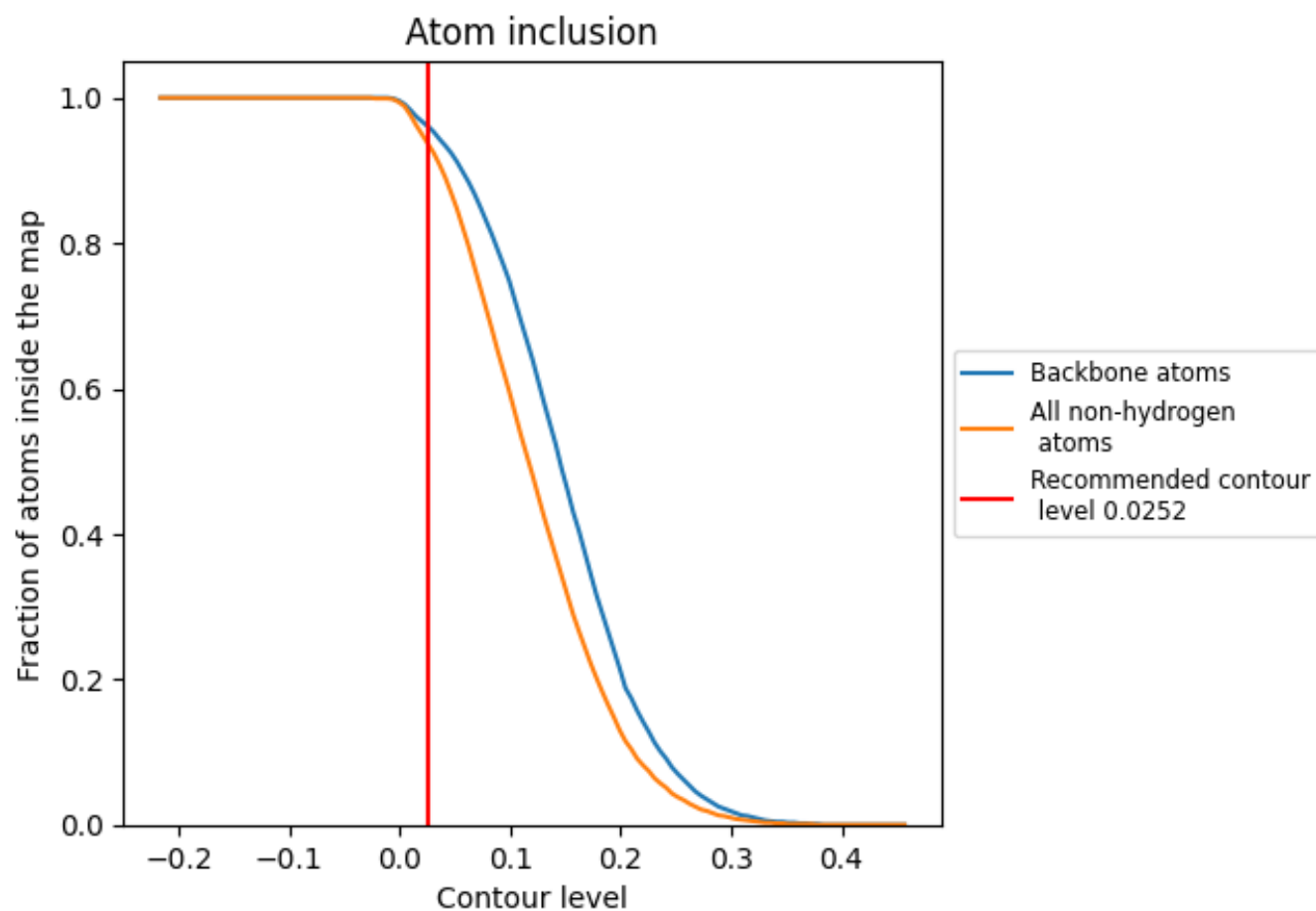
The images above show the model with each residue coloured according its Q-score. This shows their resolvability in the map with higher Q-score values reflecting better resolvability. Please note: Q-score is calculating the resolvability of atoms, and thus high values are only expected at resolutions at which atoms can be resolved. Low Q-score values may therefore be expected for many entries.

9.3 Atom inclusion mapped to coordinate model [i](#)



The images above show the model with each residue coloured according to its atom inclusion. This shows to what extent they are inside the map at the recommended contour level (0.0252).

9.4 Atom inclusion [i](#)



At the recommended contour level, 96% of all backbone atoms, 94% of all non-hydrogen atoms, are inside the map.

9.5 Map-model fit summary ⓘ

The table lists the average atom inclusion at the recommended contour level (0.0252) and Q-score for the entire model and for each chain.

Chain	Atom inclusion	Q-score
All	<div></div> 0.9380	<div></div> 0.3890
A	<div></div> 0.9720	<div></div> 0.4000
B	<div></div> 0.9430	<div></div> 0.3980
C	<div></div> 0.9670	<div></div> 0.3620
D	<div></div> 1.0000	<div></div> 0.4090
E	<div></div> 0.9170	<div></div> 0.2800
H	<div></div> 0.9770	<div></div> 0.3900
L	<div></div> 0.6650	<div></div> 0.2890
X	<div></div> 0.9580	<div></div> 0.3480

1.0

0.0

<0.0