



# Full wwPDB X-ray Structure Validation Report ⓘ

Mar 9, 2026 – 05:35 AM UTC

PDB ID : 7HT0 / pdb\_00007ht0  
Title : PanDDA analysis group deposition – Crystal Structure of FatA in complex with Z28870646  
Authors : Kot, E.; Ni, X.; Tomlinson, C.W.E.; Fearon, D.; Aschenbrenner, J.C.; Fairhead, M.; Koekemoer, L.; Marx, M.L.; Wright, N.D.; Mulholland, N.P.; Montgomery, M.G.; von Delft, F.  
Deposited on : 2024-12-23  
Resolution : 2.32 Å(reported)

This is a Full wwPDB X-ray Structure Validation Report for a publicly released PDB entry.

We welcome your comments at [validation@mail.wwpdb.org](mailto:validation@mail.wwpdb.org)

A user guide is available at

<https://www.wwpdb.org/validation/2017/XrayValidationReportHelp>

with specific help available everywhere you see the ⓘ symbol.

The types of validation reports are described at

<http://www.wwpdb.org/validation/2017/FAQs#types>.

---

The following versions of software and data (see [references](#) ①) were used in the production of this report:

MolProbity	:	4-5-2 with Phenix2.0
Mogul	:	2022.3.0, CSD as543be (2022)
Xtriage (Phenix)	:	2.0
EDS	:	3.0
Buster-report	:	wwPDB partial adaption of 1.1.7 (2018)
Percentile statistics	:	20250101.v01 (using entries in the PDB archive January 1st 2025)
CCP4	:	9.0.010 (Gargrove)
Density-Fitness	:	1.0.12
Ideal geometry (proteins)	:	Engh & Huber (2001)
Ideal geometry (DNA, RNA)	:	Parkinson et al. (1996)
Validation Pipeline (wwPDB-VP)	:	2.49

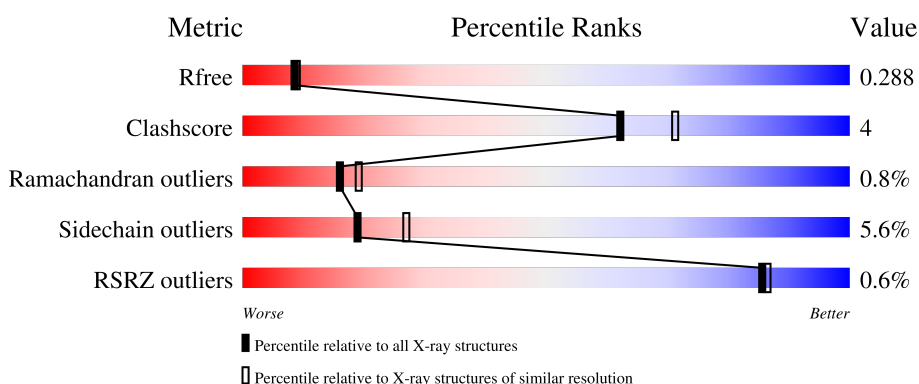
# 1 Overall quality at a glance

The following experimental techniques were used to determine the structure:

*X-RAY DIFFRACTION*



The reported resolution of this entry is 2.32 Å.

Percentile scores (ranging between 0-100) for global validation metrics of the entry are shown in the following graphic. The table shows the number of entries on which the scores are based.



Metric	Whole archive (#Entries)	Similar resolution (#Entries, resolution range(Å))
$R_{free}$	180053	7754 (2.34-2.30)
Clashscore	190562	8383 (2.34-2.30)
Ramachandran outliers	187476	8303 (2.34-2.30)
Sidechain outliers	187428	8303 (2.34-2.30)
RSRZ outliers	180081	7760 (2.34-2.30)

The table below summarises the geometric issues observed across the polymeric chains and their fit to the electron density. The red, orange, yellow and green segments of the lower bar indicate the fraction of residues that contain outliers for  $\geq 3$ , 2, 1 and 0 types of geometric quality criteria respectively. A grey segment represents the fraction of residues that are not modelled. The numeric value for each fraction is indicated below the corresponding segment, with a dot representing fractions  $\leq 5\%$ . The upper red bar (where present) indicates the fraction of residues that have poor fit to the electron density. The numeric value is given above the bar.

Mol	Chain	Length	Quality of chain
1	A	295	
1	B	295	

## 2 Entry composition

There are 3 unique types of molecules in this entry. The entry contains 4595 atoms, of which 0 are hydrogens and 0 are deuteriums.

In the tables below, the ZeroOcc column contains the number of atoms modelled with zero occupancy, the AltConf column contains the number of residues with at least one atom in alternate conformation and the Trace column contains the number of residues modelled with at most 2 atoms.

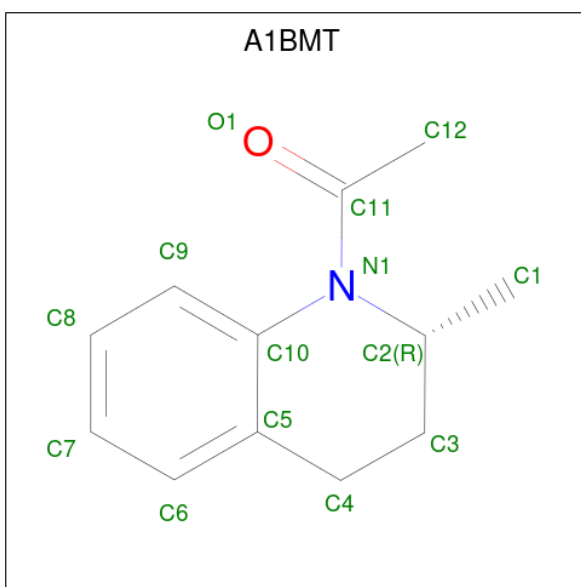
- Molecule 1 is a protein called Oleoyl-acyl carrier protein thioesterase 1, chloroplastic.

Mol	Chain	Residues	Atoms					ZeroOcc	AltConf	Trace
1	A	269	Total	C	N	O	S	0	3	0
			2206	1372	390	432	12			
1	B	268	Total	C	N	O	S	0	4	0
			2230	1390	396	432	12			

There are 14 discrepancies between the modelled and reference sequences:

Chain	Residue	Modelled	Actual	Comment	Reference
A	74	MET	-	initiating methionine	UNP Q42561
A	363	HIS	-	expression tag	UNP Q42561
A	364	HIS	-	expression tag	UNP Q42561
A	365	HIS	-	expression tag	UNP Q42561
A	366	HIS	-	expression tag	UNP Q42561
A	367	HIS	-	expression tag	UNP Q42561
A	368	HIS	-	expression tag	UNP Q42561
B	74	MET	-	initiating methionine	UNP Q42561
B	363	HIS	-	expression tag	UNP Q42561
B	364	HIS	-	expression tag	UNP Q42561
B	365	HIS	-	expression tag	UNP Q42561
B	366	HIS	-	expression tag	UNP Q42561
B	367	HIS	-	expression tag	UNP Q42561
B	368	HIS	-	expression tag	UNP Q42561

- Molecule 2 is 1-[(2S)-2-methyl-3,4-dihydroquinolin-1(2H)-yl]ethan-1-one (CCD ID: A1BMT) (formula: C<sub>12</sub>H<sub>15</sub>NO) (labeled as "Ligand of Interest" by depositor).



Mol	Chain	Residues	Atoms				ZeroOcc	AltConf
2	A	1	Total	C	N	O	0	0
			14	12	1	1		
2	B	1	Total	C	N	O	0	0
			14	12	1	1		

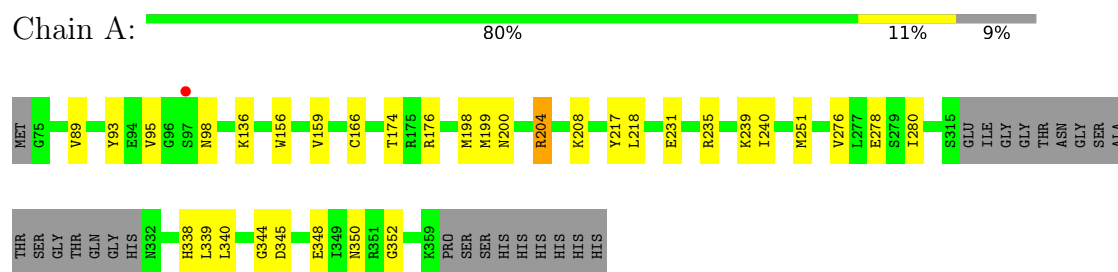
- Molecule 3 is water.

Mol	Chain	Residues	Atoms		ZeroOcc	AltConf
3	A	67	Total	O	0	0
			67	67		
3	B	64	Total	O	0	0
			64	64		

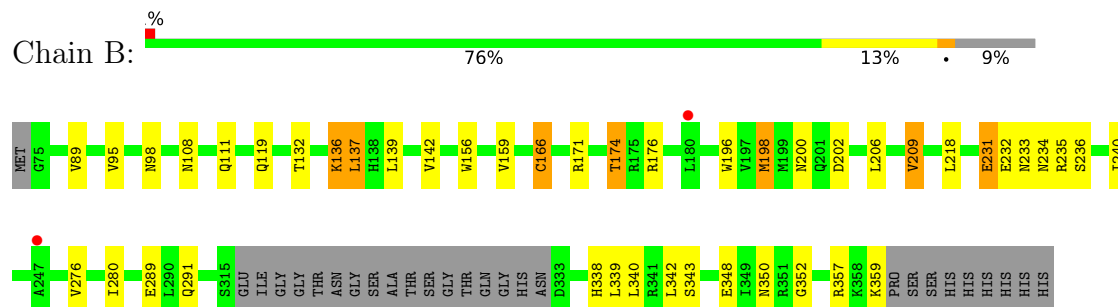
### 3 Residue-property plots

These plots are drawn for all protein, RNA, DNA and oligosaccharide chains in the entry. The first graphic for a chain summarises the proportions of the various outlier classes displayed in the second graphic. The second graphic shows the sequence view annotated by issues in geometry and electron density. Residues are color-coded according to the number of geometric quality criteria for which they contain at least one outlier: green = 0, yellow = 1, orange = 2 and red = 3 or more. A red dot above a residue indicates a poor fit to the electron density ( $RSRZ > 2$ ). Stretches of 2 or more consecutive residues without any outlier are shown as a green connector. Residues present in the sample, but not in the model, are shown in grey.

- Molecule 1: Oleoyl-acyl carrier protein thioesterase 1, chloroplastic



- Molecule 1: Oleoyl-acyl carrier protein thioesterase 1, chloroplastic



## 4 Data and refinement statistics

Property	Value	Source
Space group	I 2 2 2	Depositor
Cell constants a, b, c, $\alpha$ , $\beta$ , $\gamma$	98.61Å 98.64Å 128.78Å 90.00° 90.00° 90.00°	Depositor
Resolution (Å)	28.07 – 2.32 28.07 – 2.32	Depositor EDS
% Data completeness (in resolution range)	99.8 (28.07-2.32) 99.8 (28.07-2.32)	Depositor EDS
$R_{merge}$	0.35	Depositor
$R_{sym}$	(Not available)	Depositor
$\langle I/\sigma(I) \rangle$ <sup>1</sup>	1.14 (at 2.31Å)	Xtriage
Refinement program	BUSTER 2.10.4 (23-JAN-2024)	Depositor
R, $R_{free}$	0.249 , 0.293 0.240 , 0.288	Depositor DCC
$R_{free}$ test set	1370 reflections (4.97%)	wwPDB-VP
Wilson B-factor (Å <sup>2</sup> )	48.9	Xtriage
Anisotropy	0.355	Xtriage
Bulk solvent $k_{sol}$ (e/Å <sup>3</sup> ), $B_{sol}$ (Å <sup>2</sup> )	0.33 , 38.4	EDS
L-test for twinning <sup>2</sup>	$\langle  L  \rangle = 0.51$ , $\langle L^2 \rangle = 0.34$	Xtriage
Estimated twinning fraction	0.429 for -k,-h,-l	Xtriage
$F_o, F_c$ correlation	0.96	EDS
Total number of atoms	4595	wwPDB-VP
Average B, all atoms (Å <sup>2</sup> )	55.0	wwPDB-VP

Xtriage's analysis on translational NCS is as follows: *The largest off-origin peak in the Patterson function is 4.70% of the height of the origin peak. No significant pseudotranslation is detected.*

<sup>1</sup>Intensities estimated from amplitudes.

<sup>2</sup>Theoretical values of  $\langle |L| \rangle$ ,  $\langle L^2 \rangle$  for acentric reflections are 0.5, 0.333 respectively for untwinned datasets, and 0.375, 0.2 for perfectly twinned datasets.

## 5 Model quality

### 5.1 Standard geometry

Bond lengths and bond angles in the following residue types are not validated in this section: A1BMT

The Z score for a bond length (or angle) is the number of standard deviations the observed value is removed from the expected value. A bond length (or angle) with  $|Z| > 5$  is considered an outlier worth inspection. RMSZ is the root-mean-square of all Z scores of the bond lengths (or angles).

Mol	Chain	Bond lengths		Bond angles	
		RMSZ	$\# Z  > 5$	RMSZ	$\# Z  > 5$
1	A	0.66	0/2246	1.02	3/3042 (0.1%)
1	B	0.66	0/2270	1.02	4/3073 (0.1%)
All	All	0.66	0/4516	1.02	7/6115 (0.1%)

There are no bond length outliers.

All (7) bond angle outliers are listed below:

Mol	Chain	Res	Type	Atoms	Z	Observed(°)	Ideal(°)
1	B	232	GLU	CA-C-N	5.74	132.50	121.54
1	B	232	GLU	C-N-CA	5.74	132.50	121.54
1	A	200	ASN	CA-C-N	5.62	128.07	120.38
1	A	200	ASN	C-N-CA	5.62	128.07	120.38
1	B	342	LEU	CA-C-N	5.25	127.57	120.38
1	B	342	LEU	C-N-CA	5.25	127.57	120.38
1	A	344	GLY	N-CA-C	5.06	121.59	115.31

There are no chirality outliers.

There are no planarity outliers.

### 5.2 Too-close contacts

In the following table, the Non-H and H(model) columns list the number of non-hydrogen atoms and hydrogen atoms in the chain respectively. The H(added) column lists the number of hydrogen atoms added and optimized by MolProbity. The Clashes column lists the number of clashes within the asymmetric unit, whereas Symm-Clashes lists symmetry-related clashes.

Mol	Chain	Non-H	H(model)	H(added)	Clashes	Symm-Clashes
1	A	2206	0	2159	15	0
1	B	2230	0	2192	22	0

*Continued on next page...*

*Continued from previous page...*

Mol	Chain	Non-H	H(model)	H(added)	Clashes	Symm-Clashes
2	A	14	0	0	2	0
2	B	14	0	0	0	0
3	A	67	0	0	0	1
3	B	64	0	0	0	1
All	All	4595	0	4351	36	1

The all-atom clashscore is defined as the number of clashes found per 1000 atoms (including hydrogen atoms). The all-atom clashscore for this structure is 4.

All (36) close contacts within the same asymmetric unit are listed below, sorted by their clash magnitude.

Atom-1	Atom-2	Interatomic distance (Å)	Clash overlap (Å)
1:B:174:THR:HG22	1:B:196:TRP:HB2	1.73	0.70
1:B:291:GLN:HG2	1:B:357:ARG:HD3	1.76	0.67
1:B:200:ASN:HD22	1:B:202:ASP:H	1.44	0.63
1:B:231:GLU:HB2	1:B:234:ASN:HB3	1.83	0.60
1:B:198:MET:HG3	1:B:209:VAL:HG12	1.84	0.59
1:B:280:ILE:HD11	1:B:338:HIS:HE1	1.67	0.59
1:A:280:ILE:HD11	1:A:338:HIS:HE1	1.67	0.59
1:A:240:ILE:HD13	1:A:352:GLY:HA2	1.86	0.58
1:B:240:ILE:HD13	1:B:352:GLY:HA2	1.86	0.57
1:B:291:GLN:HG2	1:B:357:ARG:HH21	1.70	0.56
1:A:93:TYR:CE2	1:B:108:ASN:HB3	2.41	0.56
1:A:95:VAL:HG11	1:A:156:TRP:HB2	1.89	0.54
1:A:340:LEU:HB2	1:A:350:ASN:HB2	1.90	0.54
1:B:234:ASN:ND2	1:B:236:SER:OG	2.41	0.53
1:B:95:VAL:HG11	1:B:156:TRP:HB2	1.90	0.53
1:B:291:GLN:CG	1:B:357:ARG:HD3	2.38	0.53
1:B:340:LEU:HB2	1:B:350:ASN:HB2	1.90	0.51
1:A:199:MET:HE1	1:A:204:ARG:CZ	2.41	0.50
1:B:200:ASN:ND2	1:B:202:ASP:H	2.08	0.50
1:B:289:GLU:HG3	1:B:359:LYS:HG2	1.96	0.47
1:B:166[B]:CYS:SG	1:B:176:ARG:CZ	3.03	0.46
1:B:200:ASN:HD22	1:B:202:ASP:N	2.14	0.46
1:A:339:LEU:HD11	1:A:348:GLU:HG3	1.98	0.45
1:A:199:MET:HE2	1:A:199:MET:HB3	1.87	0.44
1:B:339:LEU:HD11	1:B:348:GLU:HG3	1.98	0.44
1:B:136:LYS:HG3	1:B:137:LEU:HD13	1.98	0.44
1:A:280:ILE:HD11	1:A:338:HIS:CE1	2.50	0.43
1:B:231:GLU:O	1:B:234:ASN:OD1	2.37	0.43
1:A:166[A]:CYS:SG	1:A:176:ARG:CZ	3.07	0.43

*Continued on next page...*

Continued from previous page...

Atom-1	Atom-2	Interatomic distance (Å)	Clash overlap (Å)
1:A:166[C]:CYS:SG	1:A:176:ARG:CZ	3.07	0.43
1:B:280:ILE:HD11	1:B:338:HIS:CE1	2.50	0.42
1:A:217:TYR:HB2	2:A:401:A1BMT:C3	2.48	0.42
1:A:251:MET:HG2	1:A:278:GLU:HB3	2.03	0.41
1:A:89:VAL:HG22	1:A:159:VAL:HG22	2.02	0.41
1:A:174:THR:HG21	2:A:401:A1BMT:C1	2.50	0.41
1:B:89:VAL:HG22	1:B:159:VAL:HG22	2.03	0.40

All (1) symmetry-related close contacts are listed below. The label for Atom-2 includes the symmetry operator and encoded unit-cell translations to be applied.

Atom-1	Atom-2	Interatomic distance (Å)	Clash overlap (Å)
3:A:555:HOH:O	3:B:533:HOH:O[6_444]	2.05	0.15

## 5.3 Torsion angles [i](#)

### 5.3.1 Protein backbone [i](#)

In the following table, the Percentiles column shows the percent Ramachandran outliers of the chain as a percentile score with respect to all X-ray entries followed by that with respect to entries of similar resolution.

The Analysed column shows the number of residues for which the backbone conformation was analysed, and the total number of residues.

Mol	Chain	Analysed	Favoured	Allowed	Outliers	Percentiles	
1	A	271/295 (92%)	263 (97%)	6 (2%)	2 (1%)	18	22
1	B	272/295 (92%)	266 (98%)	4 (2%)	2 (1%)	18	22
All	All	543/590 (92%)	529 (97%)	10 (2%)	4 (1%)	16	22

All (4) Ramachandran outliers are listed below:

Mol	Chain	Res	Type
1	B	233	ASN
1	A	231	GLU
1	A	345	ASP
1	B	231	GLU

### 5.3.2 Protein sidechains ⓘ

In the following table, the Percentiles column shows the percent sidechain outliers of the chain as a percentile score with respect to all X-ray entries followed by that with respect to entries of similar resolution.

The Analysed column shows the number of residues for which the sidechain conformation was analysed, and the total number of residues.

Mol	Chain	Analysed	Rotameric	Outliers	Percentiles	
1	A	249/263 (95%)	240 (96%)	9 (4%)	31	45
1	B	250/263 (95%)	230 (92%)	20 (8%)	11	14
All	All	499/526 (95%)	470 (94%)	29 (6%)	19	25

All (29) residues with a non-rotameric sidechain are listed below:

Mol	Chain	Res	Type
1	A	98	ASN
1	A	136	LYS
1	A	198	MET
1	A	204	ARG
1	A	208	LYS
1	A	218	LEU
1	A	235	ARG
1	A	239	LYS
1	A	276	VAL
1	B	98	ASN
1	B	111	GLN
1	B	119	GLN
1	B	132	THR
1	B	136	LYS
1	B	137	LEU
1	B	139	LEU
1	B	142	VAL
1	B	166[A]	CYS
1	B	166[B]	CYS
1	B	166[C]	CYS
1	B	171	ARG
1	B	174	THR
1	B	198	MET
1	B	206	LEU
1	B	209	VAL
1	B	218	LEU
1	B	235	ARG

*Continued on next page...*

*Continued from previous page...*

Mol	Chain	Res	Type
1	B	276	VAL
1	B	343	SER

Sometimes sidechains can be flipped to improve hydrogen bonding and reduce clashes. All (12) such sidechains are listed below:

Mol	Chain	Res	Type
1	A	98	ASN
1	A	119	GLN
1	A	138	HIS
1	A	233	ASN
1	A	303	GLN
1	B	98	ASN
1	B	138	HIS
1	B	200	ASN
1	B	234	ASN
1	B	265	GLN
1	B	268	ASN
1	B	303	GLN

### 5.3.3 RNA [i](#)

There are no RNA molecules in this entry.

## 5.4 Non-standard residues in protein, DNA, RNA chains [i](#)

There are no non-standard protein/DNA/RNA residues in this entry.

## 5.5 Carbohydrates [i](#)

There are no oligosaccharides in this entry.

## 5.6 Ligand geometry [i](#)

2 ligands are modelled in this entry.

In the following table, the Counts columns list the number of bonds (or angles) for which Mogul statistics could be retrieved, the number of bonds (or angles) that are observed in the model and the number of bonds (or angles) that are defined in the Chemical Component Dictionary. The Link column lists molecule types, if any, to which the group is linked. The Z score for a bond

length (or angle) is the number of standard deviations the observed value is removed from the expected value. A bond length (or angle) with  $|Z| > 2$  is considered an outlier worth inspection. RMSZ is the root-mean-square of all Z scores of the bond lengths (or angles).

Mol	Type	Chain	Res	Link	Bond lengths			Bond angles		
					Counts	RMSZ	# Z  > 2	Counts	RMSZ	# Z  > 2
2	A1BMT	A	401	-	15,15,15	0.95	1 (6%)	21,21,21	1.33	4 (19%)
2	A1BMT	B	401	-	15,15,15	0.88	1 (6%)	21,21,21	1.34	3 (14%)

In the following table, the Chirals column lists the number of chiral outliers, the number of chiral centers analysed, the number of these observed in the model and the number defined in the Chemical Component Dictionary. Similar counts are reported in the Torsion and Rings columns. '-' means no outliers of that kind were identified.

Mol	Type	Chain	Res	Link	Chirals	Torsions	Rings
2	A1BMT	A	401	-	-	4/4/17/17	0/2/2/2
2	A1BMT	B	401	-	-	4/4/17/17	0/2/2/2

All (2) bond length outliers are listed below:

Mol	Chain	Res	Type	Atoms	Z	Observed(Å)	Ideal(Å)
2	A	401	A1BMT	C2-N1	2.70	1.51	1.48
2	B	401	A1BMT	C2-N1	2.67	1.51	1.48

All (7) bond angle outliers are listed below:

Mol	Chain	Res	Type	Atoms	Z	Observed(°)	Ideal(°)
2	B	401	A1BMT	C3-C4-C5	-3.45	106.32	112.87
2	A	401	A1BMT	C3-C4-C5	-3.41	106.39	112.87
2	B	401	A1BMT	C10-N1-C11	-3.09	121.05	124.98
2	A	401	A1BMT	C10-N1-C11	-2.91	121.28	124.98
2	B	401	A1BMT	C1-C2-C3	-2.44	108.20	112.74
2	A	401	A1BMT	C1-C2-C3	-2.33	108.40	112.74
2	A	401	A1BMT	C12-C11-N1	2.05	120.70	117.87

There are no chirality outliers.

All (8) torsion outliers are listed below:

Mol	Chain	Res	Type	Atoms
2	A	401	A1BMT	C12-C11-N1-C10
2	A	401	A1BMT	O1-C11-N1-C10
2	B	401	A1BMT	C12-C11-N1-C10

*Continued on next page...*

*Continued from previous page...*

Mol	Chain	Res	Type	Atoms
2	B	401	A1BMT	O1-C11-N1-C10
2	B	401	A1BMT	C12-C11-N1-C2
2	A	401	A1BMT	C12-C11-N1-C2
2	A	401	A1BMT	O1-C11-N1-C2
2	B	401	A1BMT	O1-C11-N1-C2

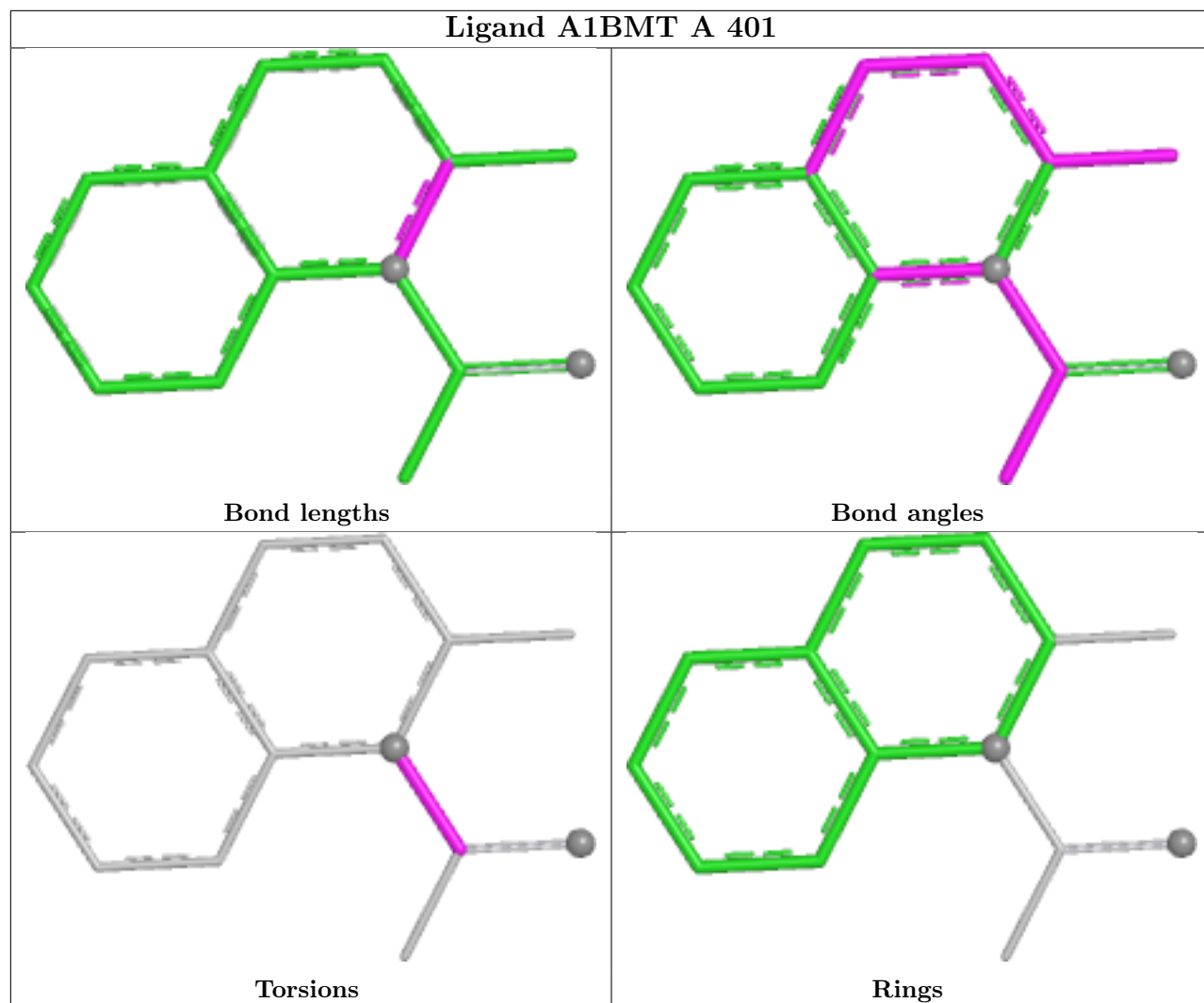
There are no ring outliers.

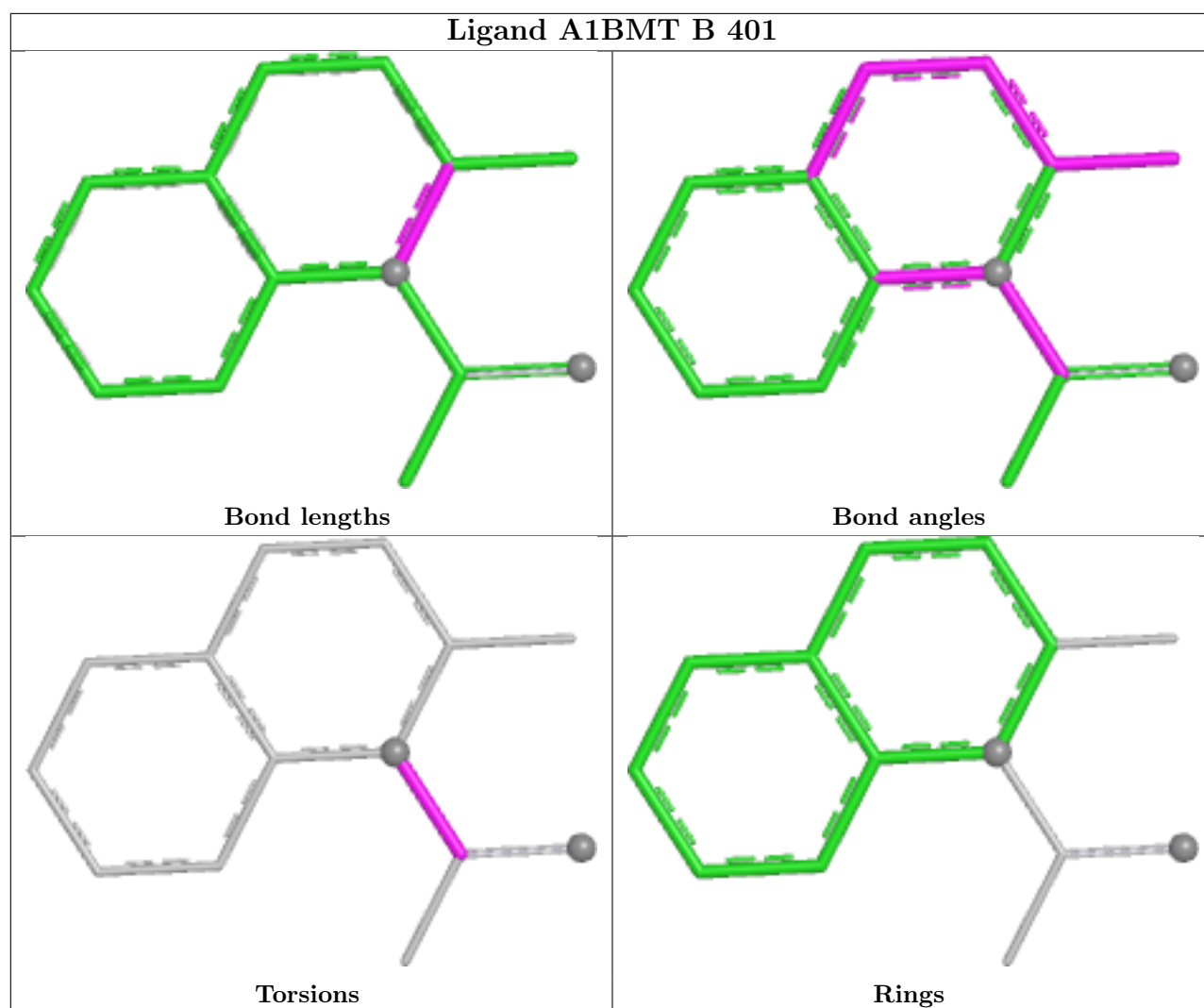
1 monomer is involved in 2 short contacts:

Mol	Chain	Res	Type	Clashes	Symm-Clashes
2	A	401	A1BMT	2	0

The following is a two-dimensional graphical depiction of Mogul quality analysis of bond lengths, bond angles, torsion angles, and ring geometry for all instances of the Ligand of Interest. In addition, ligands with molecular weight > 250 and outliers as shown on the validation Tables will also be included. For torsion angles, if less than 5% of the Mogul distribution of torsion angles is within 10 degrees of the torsion angle in question, then that torsion angle is considered an outlier. Any bond that is central to one or more torsion angles identified as an outlier by Mogul will be highlighted in the graph. For rings, the root-mean-square deviation (RMSD) between the ring in question and similar rings identified by Mogul is calculated over all ring torsion angles. If the average RMSD is greater than 60 degrees and the minimal RMSD between the ring in question and any Mogul-identified rings is also greater than 60 degrees, then that ring is considered an outlier. The outliers are highlighted in purple. The color gray indicates Mogul did not find sufficient equivalents in the CSD to analyse the geometry.

## Ligand A1BMT A 401





## 5.7 Other polymers [i](#)

There are no such residues in this entry.

## 5.8 Polymer linkage issues [i](#)

There are no chain breaks in this entry.

## 6 Fit of model and data [i](#)

### 6.1 Protein, DNA and RNA chains [i](#)

In the following table, the column labelled ‘#RSRZ > 2’ contains the number (and percentage) of RSRZ outliers, followed by percent RSRZ outliers for the chain as percentile scores relative to all X-ray entries and entries of similar resolution. The OWAB column contains the minimum, median, 95<sup>th</sup> percentile and maximum values of the occupancy-weighted average B-factor per residue. The column labelled ‘Q < 0.9’ lists the number of (and percentage) of residues with an average occupancy less than 0.9.

Mol	Chain	Analysed	<RSRZ>	#RSRZ>2	OWAB(Å <sup>2</sup> )	Q<0.9
1	A	269/295 (91%)	-0.54	1 (0%) 88 89	9, 55, 79, 92	12 (4%)
1	B	268/295 (90%)	-0.47	2 (0%) 84 85	8, 52, 71, 91	53 (19%)
All	All	537/590 (91%)	-0.51	3 (0%) 85 86	8, 53, 79, 92	65 (12%)

All (3) RSRZ outliers are listed below:

Mol	Chain	Res	Type	RSRZ
1	B	247	ALA	2.4
1	B	180[A]	LEU	2.2
1	A	97[A]	SER	2.0

### 6.2 Non-standard residues in protein, DNA, RNA chains [i](#)

There are no non-standard protein/DNA/RNA residues in this entry.

### 6.3 Carbohydrates [i](#)

There are no oligosaccharides in this entry.

### 6.4 Ligands [i](#)

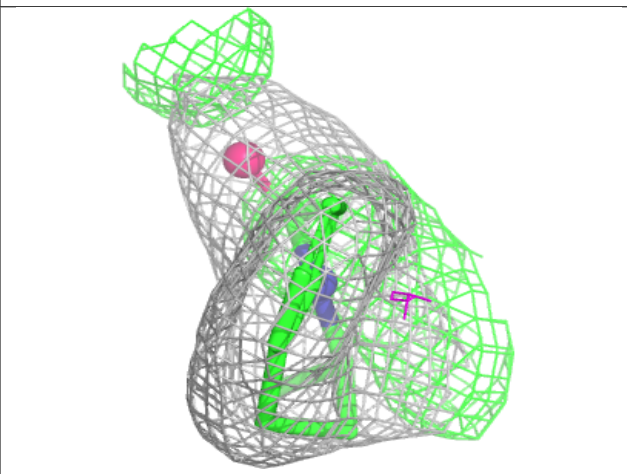
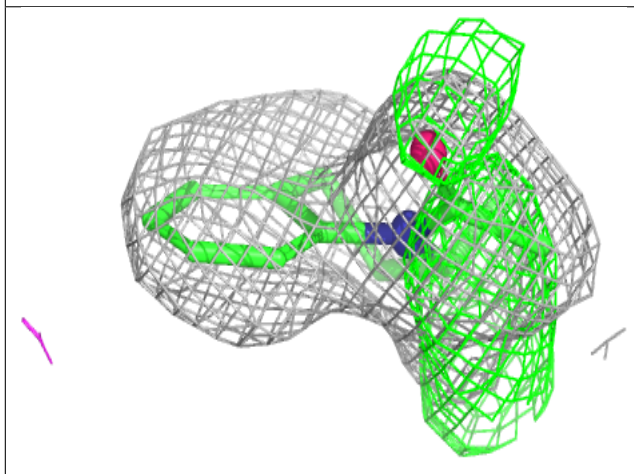
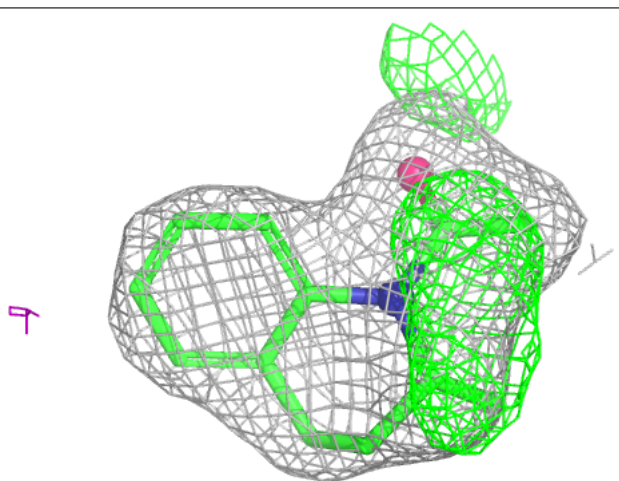
In the following table, the Atoms column lists the number of modelled atoms in the group and the number defined in the chemical component dictionary. The B-factors column lists the minimum, median, 95<sup>th</sup> percentile and maximum values of B factors of atoms in the group. The column labelled ‘Q < 0.9’ lists the number of atoms with occupancy less than 0.9.

Mol	Type	Chain	Res	Atoms	RSCC	RSR	B-factors(Å <sup>2</sup> )	Q<0.9
2	A1BMT	A	401	14/14	0.97	0.08	30,31,33,33	14
2	A1BMT	B	401	14/14	0.98	0.07	30,31,32,33	14

The following is a graphical depiction of the model fit to experimental electron density of all instances of the Ligand of Interest. In addition, ligands with molecular weight > 250 and outliers as shown on the geometry validation Tables will also be included. Each fit is shown from different orientation to approximate a three-dimensional view.

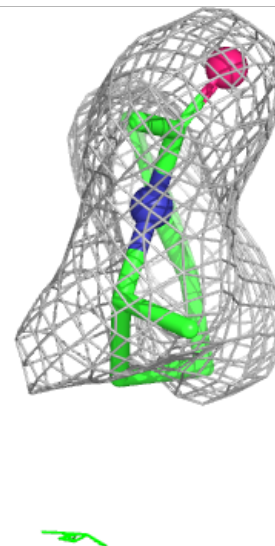
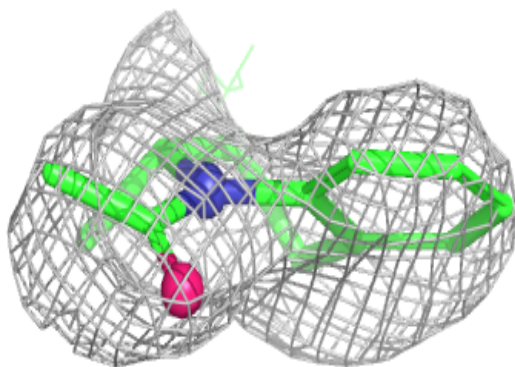
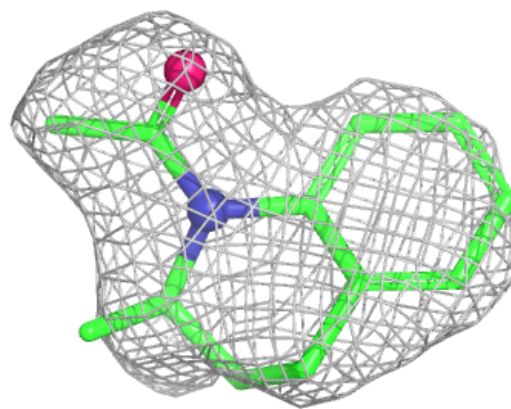
**Electron density around A1BMT A 401:**

$2mF_o-DF_c$  (at 0.7 rmsd) in gray  
 $mF_o-DF_c$  (at 3 rmsd) in purple (negative)  
and green (positive)



**Electron density around A1BMT B 401:**

$2mF_o-DF_c$  (at 0.7 rmsd) in gray  
 $mF_o-DF_c$  (at 3 rmsd) in purple (negative)  
and green (positive)



## 6.5 Other polymers [i](#)

There are no such residues in this entry.