



Full wwPDB X-ray Structure Validation Report ⓘ

Mar 1, 2026 – 03:27 PM UTC

PDB ID : 9HJ5 / pdb_00009hj5
Title : Engineered Fructosyl Peptide Oxidase - D7 mutant
Authors : Parisini, E.; Bhattacharya, S.; Rozanov, L.
Deposited on : 2024-11-28
Resolution : 2.09 Å(reported)

This is a Full wwPDB X-ray Structure Validation Report for a publicly released PDB entry.

We welcome your comments at validation@mail.wwpdb.org

A user guide is available at

<https://www.wwpdb.org/validation/2017/XrayValidationReportHelp>

with specific help available everywhere you see the ⓘ symbol.

The types of validation reports are described at

<http://www.wwpdb.org/validation/2017/FAQs#types>.

The following versions of software and data (see [references ⓘ](#)) were used in the production of this report:

MolProbity	:	4-5-2 with Phenix2.0
Mogul	:	2022.3.0, CSD as543be (2022)
Xtriage (Phenix)	:	2.0
EDS	:	3.0
Buster-report	:	wwPDB partial adaption of 1.1.7 (2018)
Percentile statistics	:	20250101.v01 (using entries in the PDB archive January 1st 2025)
CCP4	:	9.0.010 (Gargrove)
Density-Fitness	:	1.0.12
Ideal geometry (proteins)	:	Engh & Huber (2001)
Ideal geometry (DNA, RNA)	:	Parkinson et al. (1996)
Validation Pipeline (wwPDB-VP)	:	2.49

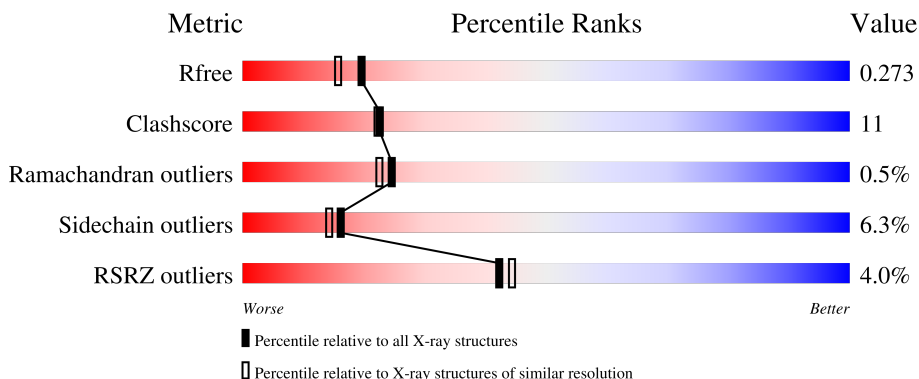
1 Overall quality at a glance

The following experimental techniques were used to determine the structure:

X-RAY DIFFRACTION

The reported resolution of this entry is 2.09 Å.

Percentile scores (ranging between 0-100) for global validation metrics of the entry are shown in the following graphic. The table shows the number of entries on which the scores are based.



Metric	Whole archive (#Entries)	Similar resolution (#Entries, resolution range(Å))
R_{free}	180053	6658 (2.10-2.10)
Clashscore	190562	7164 (2.10-2.10)
Ramachandran outliers	187476	7099 (2.10-2.10)
Sidechain outliers	187428	7100 (2.10-2.10)
RSRZ outliers	180081	6662 (2.10-2.10)

The table below summarises the geometric issues observed across the polymeric chains and their fit to the electron density. The red, orange, yellow and green segments of the lower bar indicate the fraction of residues that contain outliers for ≥ 3 , 2, 1 and 0 types of geometric quality criteria respectively. A grey segment represents the fraction of residues that are not modelled. The numeric value for each fraction is indicated below the corresponding segment, with a dot representing fractions $\leq 5\%$. The upper red bar (where present) indicates the fraction of residues that have poor fit to the electron density. The numeric value is given above the bar.

Mol	Chain	Length	Quality of chain
1	A	424	<div> <div>4%</div> <div> <div></div> <div>75%</div> <div>21%</div> <div>..</div> </div> </div>
1	B	424	<div> <div>3%</div> <div> <div></div> <div>77%</div> <div>19%</div> <div>..</div> </div> </div>

2 Entry composition [i](#)

There are 4 unique types of molecules in this entry. The entry contains 13707 atoms, of which 6687 are hydrogens and 0 are deuteriums.

In the tables below, the ZeroOcc column contains the number of atoms modelled with zero occupancy, the AltConf column contains the number of residues with at least one atom in alternate conformation and the Trace column contains the number of residues modelled with at most 2 atoms.

- Molecule 1 is a protein called Engineered Fructosyl Peptide Oxidase - D7 mutant.

Mol	Chain	Residues	Atoms						ZeroOcc	AltConf	Trace
1	A	416	Total	C	H	N	O	S	176	6	0
			6589	2115	3290	569	596	19			
1	B	416	Total	C	H	N	O	S	178	7	0
			6600	2117	3295	571	598	19			

- Molecule 2 is FLAVIN-ADENINE DINUCLEOTIDE (CCD ID: FAD) (formula: $C_{27}H_{33}N_9O_{15}P_2$) (labeled as "Ligand of Interest" by depositor).



Mol	Chain	Residues	Atoms						ZeroOcc	AltConf
2	A	1	Total	C	H	N	O	P	5	0
			84	27	31	9	15	2		
2	B	1	Total	C	H	N	O	P	5	0
			84	27	31	9	15	2		

- Molecule 3 is GLYCEROL (CCD ID: GOL) (formula: $C_3H_8O_3$).



Mol	Chain	Residues	Atoms				ZeroOcc	AltConf
3	A	1	Total	C	H	O	2	0
			14	3	8	3		
3	A	1	Total	C	H	O	2	0
			14	3	8	3		
3	B	1	Total	C	H	O	2	0
			14	3	8	3		
3	B	1	Total	C	H	O	2	0
			14	3	8	3		
3	B	1	Total	C	H	O	2	0
			14	3	8	3		

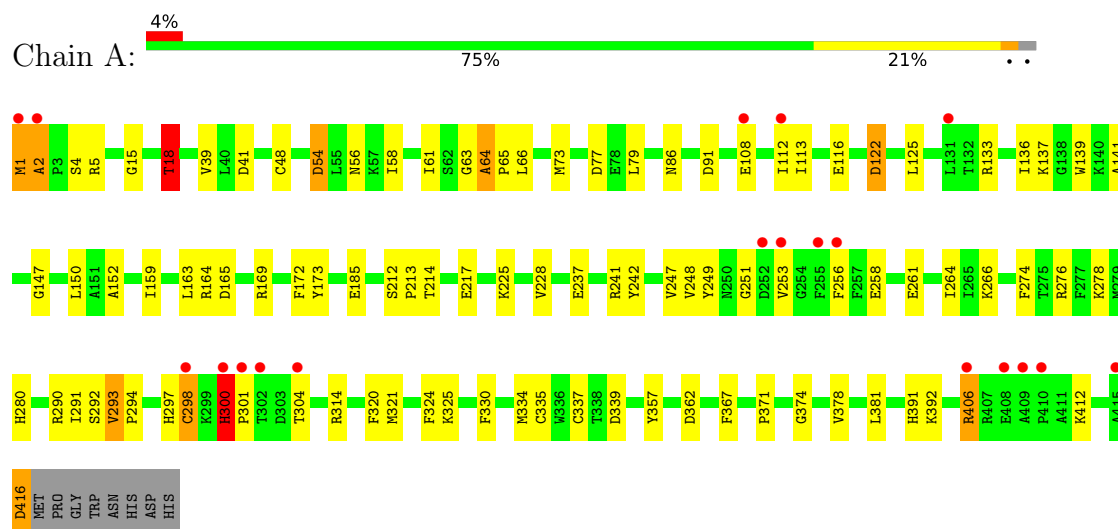
- Molecule 4 is water.

Mol	Chain	Residues	Atoms		ZeroOcc	AltConf
4	A	138	Total	O	0	0
			138	138		
4	B	142	Total	O	0	0
			142	142		

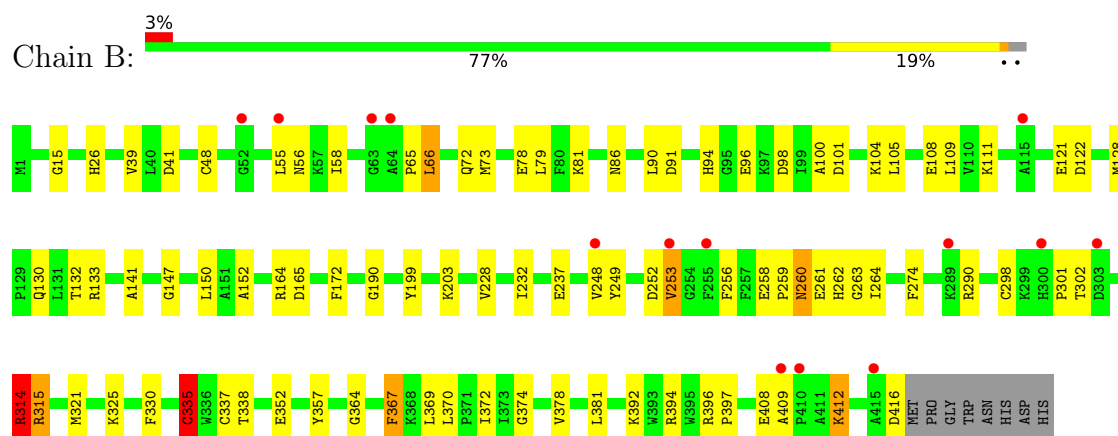
3 Residue-property plots

These plots are drawn for all protein, RNA, DNA and oligosaccharide chains in the entry. The first graphic for a chain summarises the proportions of the various outlier classes displayed in the second graphic. The second graphic shows the sequence view annotated by issues in geometry and electron density. Residues are color-coded according to the number of geometric quality criteria for which they contain at least one outlier: green = 0, yellow = 1, orange = 2 and red = 3 or more. A red dot above a residue indicates a poor fit to the electron density ($RSRZ > 2$). Stretches of 2 or more consecutive residues without any outlier are shown as a green connector. Residues present in the sample, but not in the model, are shown in grey.

- Molecule 1: Engineered Fructosyl Peptide Oxidase - D7 mutant



- Molecule 1: Engineered Fructosyl Peptide Oxidase - D7 mutant



4 Data and refinement statistics

Property	Value	Source
Space group	P 1	Depositor
Cell constants a, b, c, α , β , γ	54.08Å 54.12Å 82.66Å 80.07° 85.53° 89.84°	Depositor
Resolution (Å)	53.97 – 2.09 53.97 – 2.09	Depositor EDS
% Data completeness (in resolution range)	96.9 (53.97-2.09) 96.9 (53.97-2.09)	Depositor EDS
R_{merge}	(Not available)	Depositor
R_{sym}	(Not available)	Depositor
$\langle I/\sigma(I) \rangle$ ¹	1.88 (at 2.08Å)	Xtriage
Refinement program	REFMAC 5.8.0352	Depositor
R, R_{free}	0.193 , 0.257 (Not available) , 0.273	Depositor DCC
R_{free} test set	2614 reflections (4.81%)	wwPDB-VP
Wilson B-factor (Å ²)	36.6	Xtriage
Anisotropy	0.055	Xtriage
Bulk solvent k_{sol} (e/Å ³), B_{sol} (Å ²)	0.44 , 36.8	EDS
L-test for twinning ²	$\langle L \rangle = 0.51$, $\langle L^2 \rangle = 0.34$	Xtriage
Estimated twinning fraction	No twinning to report.	Xtriage
F_o, F_c correlation	0.96	EDS
Total number of atoms	13707	wwPDB-VP
Average B, all atoms (Å ²)	44.0	wwPDB-VP

Xtriage's analysis on translational NCS is as follows: *The largest off-origin peak in the Patterson function is 7.83% of the height of the origin peak. No significant pseudotranslation is detected.*

¹Intensities estimated from amplitudes.

²Theoretical values of $\langle |L| \rangle$, $\langle L^2 \rangle$ for acentric reflections are 0.5, 0.333 respectively for untwinned datasets, and 0.375, 0.2 for perfectly twinned datasets.

5 Model quality

5.1 Standard geometry

Bond lengths and bond angles in the following residue types are not validated in this section: FAD, GOL

The Z score for a bond length (or angle) is the number of standard deviations the observed value is removed from the expected value. A bond length (or angle) with $|Z| > 5$ is considered an outlier worth inspection. RMSZ is the root-mean-square of all Z scores of the bond lengths (or angles).

Mol	Chain	Bond lengths		Bond angles	
		RMSZ	$\# Z > 5$	RMSZ	$\# Z > 5$
1	A	0.62	0/3395	1.09	6/4597 (0.1%)
1	B	0.63	0/3398	1.03	3/4601 (0.1%)
All	All	0.63	0/6793	1.06	9/9198 (0.1%)

Chiral center outliers are detected by calculating the chiral volume of a chiral center and verifying if the center is modelled as a planar moiety or with the opposite hand. A planarity outlier is detected by checking planarity of atoms in a peptide group, atoms in a mainchain group or atoms of a sidechain that are expected to be planar.

Mol	Chain	#Chirality outliers	#Planarity outliers
1	A	0	3
1	B	0	2
All	All	0	5

There are no bond length outliers.

All (9) bond angle outliers are listed below:

Mol	Chain	Res	Type	Atoms	Z	Observed(°)	Ideal(°)
1	A	18	THR	CB-CA-C	6.69	121.31	110.95
1	B	367	PHE	CA-CB-CG	-6.08	107.72	113.80
1	B	335	CYS	CB-CA-C	5.99	120.68	109.71
1	A	116	GLU	CB-CA-C	5.50	118.92	110.62
1	A	292	SER	CA-C-N	-5.30	118.72	123.33
1	A	292	SER	C-N-CA	-5.30	118.72	123.33
1	B	314	ARG	CB-CA-C	-5.25	102.63	110.88
1	A	416	ASP	CA-CB-CG	5.07	117.67	112.60
1	A	300	HIS	CA-CB-CG	5.04	118.84	113.80

There are no chirality outliers.

All (5) planarity outliers are listed below:

Mol	Chain	Res	Type	Group
1	A	169	ARG	Sidechain
1	A	2	ALA	Peptide
1	A	406[A]	ARG	Sidechain
1	B	394	ARG	Sidechain
1	B	409	ALA	Peptide

5.2 Too-close contacts

In the following table, the Non-H and H(model) columns list the number of non-hydrogen atoms and hydrogen atoms in the chain respectively. The H(added) column lists the number of hydrogen atoms added and optimized by MolProbity. The Clashes column lists the number of clashes within the asymmetric unit, whereas Symm-Clashes lists symmetry-related clashes.

Mol	Chain	Non-H	H(model)	H(added)	Clashes	Symm-Clashes
1	A	3299	3290	3278	79	1
1	B	3305	3295	3278	60	0
2	A	53	31	31	16	0
2	B	53	31	30	7	0
3	A	12	16	16	1	0
3	B	18	24	24	1	1
4	A	138	0	0	6	0
4	B	142	0	0	2	0
All	All	7020	6687	6657	139	1

The all-atom clashscore is defined as the number of clashes found per 1000 atoms (including hydrogen atoms). The all-atom clashscore for this structure is 11.

All (139) close contacts within the same asymmetric unit are listed below, sorted by their clash magnitude.

Atom-1	Atom-2	Interatomic distance (Å)	Clash overlap (Å)
1:A:335:CYS:SG	2:A:501:FAD:HM81	1.33	1.66
1:B:335:CYS:SG	2:B:501:FAD:C8M	2.04	1.45
1:B:335:CYS:SG	2:B:501:FAD:HM81	1.61	1.41
1:A:335:CYS:SG	2:A:501:FAD:C8M	2.14	1.32
1:B:335:CYS:SG	2:B:501:FAD:HM83	1.89	1.11
1:A:367:PHE:HB2	2:A:501:FAD:H2'	1.63	0.80
1:B:15:GLY:HA3	1:B:39:VAL:HG13	1.63	0.80
1:B:164:ARG:NH1	1:B:165:ASP:OD1	2.17	0.77
1:B:335:CYS:SG	2:B:501:FAD:C8	2.73	0.76
1:A:79:LEU:O	1:A:79:LEU:HD23	1.89	0.73
1:A:18:THR:HG21	2:A:501:FAD:O3'	1.88	0.72

Continued on next page...

Continued from previous page...

Atom-1	Atom-2	Interatomic distance (Å)	Clash overlap (Å)
1:A:61:ILE:HD13	1:A:113:ILE:HG21	1.72	0.70
1:A:297:HIS:HA	1:A:300:HIS:HD1	1.57	0.70
1:A:15:GLY:HA3	1:A:39:VAL:HG13	1.74	0.69
1:A:48:CYS:SG	1:A:298:CYS:CB	2.81	0.68
1:B:315:ARG:HG2	1:B:315:ARG:HH11	1.60	0.67
1:A:48:CYS:HG	1:A:298:CYS:CB	2.08	0.67
1:B:256:PHE:CZ	1:B:258:GLU:HB3	2.30	0.66
1:A:300:HIS:CG	1:A:300:HIS:O	2.49	0.65
1:A:314:ARG:HH11	1:A:314:ARG:HG3	1.60	0.65
1:A:79:LEU:HD23	1:A:79:LEU:C	2.22	0.64
1:A:335:CYS:SG	2:A:501:FAD:C8	2.84	0.64
1:B:260:ASN:C	1:B:260:ASN:HD22	2.06	0.63
1:A:1:MET:HE3	1:A:4:SER:HB2	1.79	0.63
1:A:58:ILE:CG2	1:A:247:VAL:HG11	2.30	0.62
1:B:290[B]:ARG:HH11	1:B:290[B]:ARG:HB2	1.65	0.61
1:A:54:ASP:OD1	1:A:266:LYS:HE2	2.01	0.61
1:A:48:CYS:SG	1:A:298:CYS:HB3	2.41	0.61
1:B:65:PRO:O	1:B:66:LEU:HB2	2.01	0.60
1:B:79:LEU:HD23	1:B:79:LEU:O	2.02	0.59
1:B:26:HIS:ND1	3:B:503:GOL:H11	2.17	0.59
1:A:91:ASP:O	1:A:141:ALA:HA	2.03	0.59
1:A:108[A]:GLU:HG2	4:A:696:HOH:O	2.02	0.59
1:A:48:CYS:HG	1:A:298:CYS:HG	0.59	0.58
1:B:152:ALA:HA	1:B:367:PHE:CZ	2.39	0.58
1:A:63:GLY:O	1:A:64:ALA:O	2.22	0.57
1:A:256:PHE:CZ	1:A:258:GLU:HB3	2.40	0.57
1:B:314:ARG:NH1	4:B:605:HOH:O	2.34	0.57
1:B:335:CYS:CB	2:B:501:FAD:HM81	2.35	0.57
1:A:112:ILE:HG13	4:A:638:HOH:O	2.04	0.56
1:A:321:MET:HE2	1:A:324:PHE:CD2	2.41	0.56
1:A:136:ILE:HG22	1:A:139:TRP:CE3	2.40	0.55
1:A:41:ASP:O	1:A:172:PHE:HA	2.07	0.55
1:A:18:THR:HG23	2:A:501:FAD:O2A	2.07	0.55
1:A:335:CYS:SG	2:A:501:FAD:HM83	2.38	0.54
1:A:217:GLU:OE1	4:A:601:HOH:O	2.18	0.53
2:A:501:FAD:O4'	2:A:501:FAD:C1'	2.57	0.53
1:B:91:ASP:O	1:B:141:ALA:HA	2.08	0.53
1:A:276:ARG:HH21	1:A:293:VAL:CG2	2.22	0.53
1:A:321:MET:HE2	1:A:324:PHE:HD2	1.74	0.53
1:A:362:ASP:CB	2:A:501:FAD:H5'1	2.39	0.53
1:A:362:ASP:CB	2:A:501:FAD:C5'	2.88	0.51

Continued on next page...

Continued from previous page...

Atom-1	Atom-2	Interatomic distance (Å)	Clash overlap (Å)
1:A:58:ILE:HG23	1:A:247:VAL:HG11	1.92	0.51
1:A:276:ARG:HH21	1:A:293:VAL:HG22	1.75	0.51
1:B:260:ASN:C	1:B:260:ASN:ND2	2.69	0.51
1:A:241:ARG:HD2	4:A:653:HOH:O	2.12	0.50
1:B:190:GLY:HA3	1:B:199:TYR:O	2.12	0.50
1:B:260:ASN:ND2	1:B:264:ILE:H	2.08	0.50
1:B:357:TYR:CD1	1:B:381:LEU:HD22	2.47	0.50
1:B:96:GLU:O	1:B:100:ALA:HB2	2.12	0.49
1:B:152:ALA:HB1	1:B:367:PHE:CZ	2.47	0.49
1:A:65:PRO:HG3	1:A:392:LYS:HD3	1.93	0.49
1:A:136:ILE:HG22	1:A:139:TRP:CZ3	2.48	0.49
1:A:73[B]:MET:HE3	1:A:77:ASP:OD2	2.12	0.48
1:A:274:PHE:HA	1:A:412:LYS:O	2.13	0.48
1:B:367:PHE:HB2	2:B:501:FAD:H2'	1.94	0.48
1:B:259:PRO:HB3	1:B:263:GLY:C	2.38	0.48
1:A:362:ASP:CG	2:A:501:FAD:H5'1	2.39	0.48
2:A:501:FAD:O4'	2:A:501:FAD:H1'2	2.14	0.48
1:B:290[B]:ARG:HB2	1:B:290[B]:ARG:NH1	2.27	0.47
1:A:152:ALA:HB1	1:A:367:PHE:CZ	2.50	0.47
1:B:108:GLU:HA	1:B:111:LYS:HE2	1.95	0.47
1:A:249:TYR:HA	1:A:253:VAL:O	2.14	0.47
1:B:105:LEU:HG	1:B:109:LEU:HD12	1.96	0.47
1:B:337[A]:CYS:HA	4:B:610:HOH:O	2.15	0.47
1:B:232:ILE:HD11	1:B:321:MET:HE1	1.95	0.47
1:A:18:THR:CG2	2:A:501:FAD:O3'	2.60	0.46
1:A:314:ARG:HG3	1:A:314:ARG:NH1	2.29	0.46
1:A:301:PRO:HD2	1:B:301:PRO:HD2	1.97	0.46
1:A:152:ALA:HA	1:A:367:PHE:CZ	2.50	0.46
1:A:159:ILE:O	1:A:163:LEU:HG	2.16	0.46
1:A:314:ARG:NH2	4:A:611:HOH:O	2.43	0.46
1:A:280:HIS:CD2	1:A:291[B]:ILE:HD11	2.51	0.46
1:B:48:CYS:SG	1:B:298:CYS:CB	3.04	0.46
1:B:396:ARG:N	1:B:397:PRO:CD	2.78	0.46
1:A:125:LEU:HG	1:A:136:ILE:HD11	1.97	0.45
1:B:274:PHE:HA	1:B:412:LYS:O	2.16	0.45
1:A:56:ASN:HA	1:A:150:LEU:O	2.16	0.45
1:B:86:ASN:HD21	1:B:147:GLY:H	1.65	0.45
1:B:152:ALA:CB	1:B:367:PHE:CZ	3.00	0.45
1:A:79:LEU:C	1:A:79:LEU:CD2	2.88	0.45
1:A:242:TYR:CE2	1:A:321:MET:HE3	2.51	0.45
1:A:357:TYR:CD1	1:A:381:LEU:HD22	2.52	0.45

Continued on next page...

Continued from previous page...

Atom-1	Atom-2	Interatomic distance (Å)	Clash overlap (Å)
1:B:56:ASN:HA	1:B:150:LEU:O	2.16	0.45
1:A:164:ARG:NH1	1:A:165:ASP:OD1	2.49	0.45
1:B:90:LEU:O	1:B:248:VAL:HA	2.16	0.45
1:A:362:ASP:HB2	2:A:501:FAD:C5'	2.47	0.45
3:A:502:GOL:H32	1:B:262:HIS:HE1	1.82	0.45
1:B:58:ILE:HG22	1:B:249:TYR:OH	2.17	0.44
1:B:79:LEU:HD23	1:B:79:LEU:C	2.43	0.44
1:A:65:PRO:CG	1:A:392:LYS:HD3	2.48	0.43
1:A:212:SER:HB2	1:A:213:PRO:HD3	2.00	0.43
1:A:362:ASP:HB2	2:A:501:FAD:H5'2	2.00	0.43
1:B:369:LEU:O	1:B:370:LEU:C	2.61	0.43
1:A:73[B]:MET:HE2	1:A:371:PRO:HB3	2.01	0.43
1:A:86:ASN:HD21	1:A:147:GLY:H	1.67	0.43
1:A:248:VAL:HG11	1:A:320:PHE:CE1	2.54	0.43
1:A:173:TYR:CD2	1:B:264:ILE:HD11	2.54	0.42
1:B:128:MET:HG3	1:B:130:GLN:OE1	2.19	0.42
1:A:65:PRO:O	1:A:66:LEU:HB2	2.19	0.42
1:A:300:HIS:N	1:A:301:PRO:HD3	2.35	0.42
1:B:249:TYR:HA	1:B:253:VAL:O	2.18	0.42
1:A:48:CYS:HB3	4:A:726:HOH:O	2.20	0.42
1:A:63:GLY:O	1:A:64:ALA:C	2.63	0.42
1:A:300:HIS:NE2	1:A:334:MET:HE3	2.35	0.42
1:A:337[B]:CYS:SG	2:A:501:FAD:H9	2.60	0.42
1:B:357:TYR:CE1	1:B:381:LEU:HD22	2.55	0.42
1:A:4:SER:O	1:A:5:ARG:C	2.63	0.42
1:B:203:LYS:HD3	1:B:381:LEU:HB3	2.02	0.42
1:B:374:GLY:O	1:B:378:VAL:HG23	2.19	0.42
1:B:94:HIS:O	1:B:98:ASP:HB2	2.20	0.41
1:B:152:ALA:CA	1:B:367:PHE:CZ	3.03	0.41
1:B:260:ASN:HD21	1:B:264:ILE:H	1.68	0.41
1:B:315:ARG:HH11	1:B:315:ARG:CG	2.26	0.41
1:A:337[A]:CYS:HB2	1:A:362:ASP:OD2	2.19	0.41
1:B:264:ILE:CD1	1:B:330:PHE:HZ	2.34	0.41
1:B:41:ASP:O	1:B:172:PHE:HA	2.21	0.41
1:B:337[B]:CYS:SG	1:B:364:GLY:HA2	2.60	0.41
1:A:86:ASN:ND2	1:A:147:GLY:H	2.19	0.41
1:B:72:GLN:HB2	1:B:73[B]:MET:HE2	2.03	0.41
1:B:337[B]:CYS:SG	2:B:501:FAD:H9	2.61	0.41
1:A:264:ILE:HD12	1:A:330:PHE:HZ	1.86	0.41
1:B:101:ASP:O	1:B:104:LYS:HB3	2.21	0.41
1:A:374:GLY:O	1:A:378:VAL:HG23	2.21	0.40

Continued on next page...

Continued from previous page...

Atom-1	Atom-2	Interatomic distance (Å)	Clash overlap (Å)
1:A:122:ASP:OD1	1:A:133:ARG:NH2	2.53	0.40
1:B:260:ASN:ND2	1:B:262:HIS:H	2.19	0.40
1:B:372:ILE:HD12	1:B:372:ILE:HA	1.91	0.40
1:A:225:LYS:NZ	1:A:339:ASP:OD2	2.51	0.40
1:A:293:VAL:HA	1:A:294:PRO:HD3	1.89	0.40

All (1) symmetry-related close contacts are listed below. The label for Atom-2 includes the symmetry operator and encoded unit-cell translations to be applied.

Atom-1	Atom-2	Interatomic distance (Å)	Clash overlap (Å)
1:A:391:HIS:HE2	3:B:504:GOL:O3[1_554]	1.58	0.02

5.3 Torsion angles ⓘ

5.3.1 Protein backbone ⓘ

In the following table, the Percentiles column shows the percent Ramachandran outliers of the chain as a percentile score with respect to all X-ray entries followed by that with respect to entries of similar resolution.

The Analysed column shows the number of residues for which the backbone conformation was analysed, and the total number of residues.

Mol	Chain	Analysed	Favoured	Allowed	Outliers	Percentiles	
1	A	420/424 (99%)	400 (95%)	16 (4%)	4 (1%)	12	9
1	B	421/424 (99%)	397 (94%)	24 (6%)	0	100	100
All	All	841/848 (99%)	797 (95%)	40 (5%)	4 (0%)	24	22

All (4) Ramachandran outliers are listed below:

Mol	Chain	Res	Type
1	A	64	ALA
1	A	304	THR
1	A	251	GLY
1	A	2	ALA

5.3.2 Protein sidechains ⓘ

In the following table, the Percentiles column shows the percent sidechain outliers of the chain as a percentile score with respect to all X-ray entries followed by that with respect to entries of similar resolution.

The Analysed column shows the number of residues for which the sidechain conformation was analysed, and the total number of residues.

Mol	Chain	Analysed	Rotameric	Outliers	Percentiles	
1	A	347/348 (100%)	328 (94%)	19 (6%)	19	18
1	B	348/348 (100%)	323 (93%)	25 (7%)	13	11
All	All	695/696 (100%)	651 (94%)	44 (6%)	16	14

All (44) residues with a non-rotameric sidechain are listed below:

Mol	Chain	Res	Type
1	A	1	MET
1	A	18	THR
1	A	54	ASP
1	A	122	ASP
1	A	137	LYS
1	A	185	GLU
1	A	214	THR
1	A	228	VAL
1	A	237	GLU
1	A	261	GLU
1	A	278	LYS
1	A	290	ARG
1	A	293	VAL
1	A	298	CYS
1	A	300	HIS
1	A	325	LYS
1	A	406[A]	ARG
1	A	406[B]	ARG
1	A	416	ASP
1	B	55	LEU
1	B	66	LEU
1	B	78	GLU
1	B	81	LYS
1	B	121	GLU
1	B	122	ASP
1	B	132	THR
1	B	133	ARG

Continued on next page...

Continued from previous page...

Mol	Chain	Res	Type
1	B	228	VAL
1	B	237	GLU
1	B	252	ASP
1	B	253	VAL
1	B	260	ASN
1	B	261	GLU
1	B	302	THR
1	B	314	ARG
1	B	315	ARG
1	B	325	LYS
1	B	335	CYS
1	B	338	THR
1	B	352	GLU
1	B	392	LYS
1	B	408	GLU
1	B	412	LYS
1	B	416	ASP

Sometimes sidechains can be flipped to improve hydrogen bonding and reduce clashes. All (11) such sidechains are listed below:

Mol	Chain	Res	Type
1	A	85	HIS
1	A	86	ASN
1	A	233	GLN
1	A	244	ASN
1	A	332	GLN
1	B	72	GLN
1	B	86	ASN
1	B	250	ASN
1	B	260	ASN
1	B	262	HIS
1	B	297	HIS

5.3.3 RNA ⓘ

There are no RNA molecules in this entry.

5.4 Non-standard residues in protein, DNA, RNA chains ⓘ

There are no non-standard protein/DNA/RNA residues in this entry.

5.5 Carbohydrates [i](#)

There are no oligosaccharides in this entry.

5.6 Ligand geometry [i](#)

7 ligands are modelled in this entry.

In the following table, the Counts columns list the number of bonds (or angles) for which Mogul statistics could be retrieved, the number of bonds (or angles) that are observed in the model and the number of bonds (or angles) that are defined in the Chemical Component Dictionary. The Link column lists molecule types, if any, to which the group is linked. The Z score for a bond length (or angle) is the number of standard deviations the observed value is removed from the expected value. A bond length (or angle) with $|Z| > 2$ is considered an outlier worth inspection. RMSZ is the root-mean-square of all Z scores of the bond lengths (or angles).

Mol	Type	Chain	Res	Link	Bond lengths			Bond angles		
					Counts	RMSZ	$\# Z > 2$	Counts	RMSZ	$\# Z > 2$
3	GOL	B	502	-	5,5,5	0.18	0	5,5,5	0.37	0
3	GOL	B	504	-	5,5,5	0.20	0	5,5,5	0.33	0
2	FAD	B	501	-	58,58,58	1.10	4 (6%)	85,89,89	0.94	5 (5%)
2	FAD	A	501	-	58,58,58	0.95	4 (6%)	85,89,89	1.24	8 (9%)
3	GOL	A	502	-	5,5,5	0.21	0	5,5,5	0.51	0
3	GOL	A	503	-	5,5,5	0.11	0	5,5,5	0.32	0
3	GOL	B	503	-	5,5,5	0.20	0	5,5,5	0.50	0

In the following table, the Chirals column lists the number of chiral outliers, the number of chiral centers analysed, the number of these observed in the model and the number defined in the Chemical Component Dictionary. Similar counts are reported in the Torsion and Rings columns. '-' means no outliers of that kind were identified.

Mol	Type	Chain	Res	Link	Chirals	Torsions	Rings
3	GOL	B	502	-	-	2/4/4/4	-
3	GOL	B	504	-	-	2/4/4/4	-
2	FAD	B	501	-	-	6/34/50/50	0/6/6/6
2	FAD	A	501	-	-	11/34/50/50	0/6/6/6
3	GOL	A	502	-	-	2/4/4/4	-
3	GOL	A	503	-	-	0/4/4/4	-
3	GOL	B	503	-	-	0/4/4/4	-

All (8) bond length outliers are listed below:

Mol	Chain	Res	Type	Atoms	Z	Observed(Å)	Ideal(Å)
2	B	501	FAD	P-O3P	4.37	1.64	1.59
2	B	501	FAD	PA-O3P	4.21	1.64	1.59
2	A	501	FAD	C8-C7	3.04	1.48	1.40
2	B	501	FAD	C8-C7	2.84	1.47	1.40
2	A	501	FAD	PA-O3P	2.66	1.62	1.59
2	A	501	FAD	O2'-C2'	-2.44	1.38	1.43
2	A	501	FAD	P-O3P	2.38	1.62	1.59
2	B	501	FAD	C9-C8	-2.32	1.36	1.39

All (13) bond angle outliers are listed below:

Mol	Chain	Res	Type	Atoms	Z	Observed(°)	Ideal(°)
2	A	501	FAD	O5'-C5'-C4'	5.59	124.28	109.36
2	A	501	FAD	C1'-C2'-C3'	3.46	119.05	109.66
2	B	501	FAD	O2P-P-O3P	2.78	114.79	107.27
2	B	501	FAD	C8M-C8-C9	-2.65	114.90	119.57
2	B	501	FAD	C8M-C8-C7	2.58	126.02	120.76
2	A	501	FAD	O3'-C3'-C2'	2.46	114.51	108.93
2	A	501	FAD	C8M-C8-C7	2.37	125.60	120.76
2	A	501	FAD	O4'-C4'-C3'	-2.32	103.83	109.25
2	A	501	FAD	O4'-C4'-C5'	2.27	114.99	109.99
2	B	501	FAD	O4-C4-C4X	-2.23	120.65	126.53
2	A	501	FAD	C8M-C8-C9	-2.15	115.79	119.57
2	A	501	FAD	O5'-P-O1P	2.14	117.44	108.94
2	B	501	FAD	C4-N3-C2	-2.04	122.02	125.64

There are no chirality outliers.

All (23) torsion outliers are listed below:

Mol	Chain	Res	Type	Atoms
2	A	501	FAD	C1'-C2'-C3'-O3'
2	A	501	FAD	C1'-C2'-C3'-C4'
2	A	501	FAD	C5'-O5'-P-O1P
2	A	501	FAD	C5'-O5'-P-O2P
2	A	501	FAD	C5'-O5'-P-O3P
3	A	502	GOL	C1-C2-C3-O3
2	A	501	FAD	O2'-C2'-C3'-C4'
2	B	501	FAD	C2'-C3'-C4'-C5'
2	B	501	FAD	C2'-C3'-C4'-O4'
3	B	502	GOL	C1-C2-C3-O3
3	B	504	GOL	C1-C2-C3-O3
3	A	502	GOL	O2-C2-C3-O3

Continued on next page...

Continued from previous page...

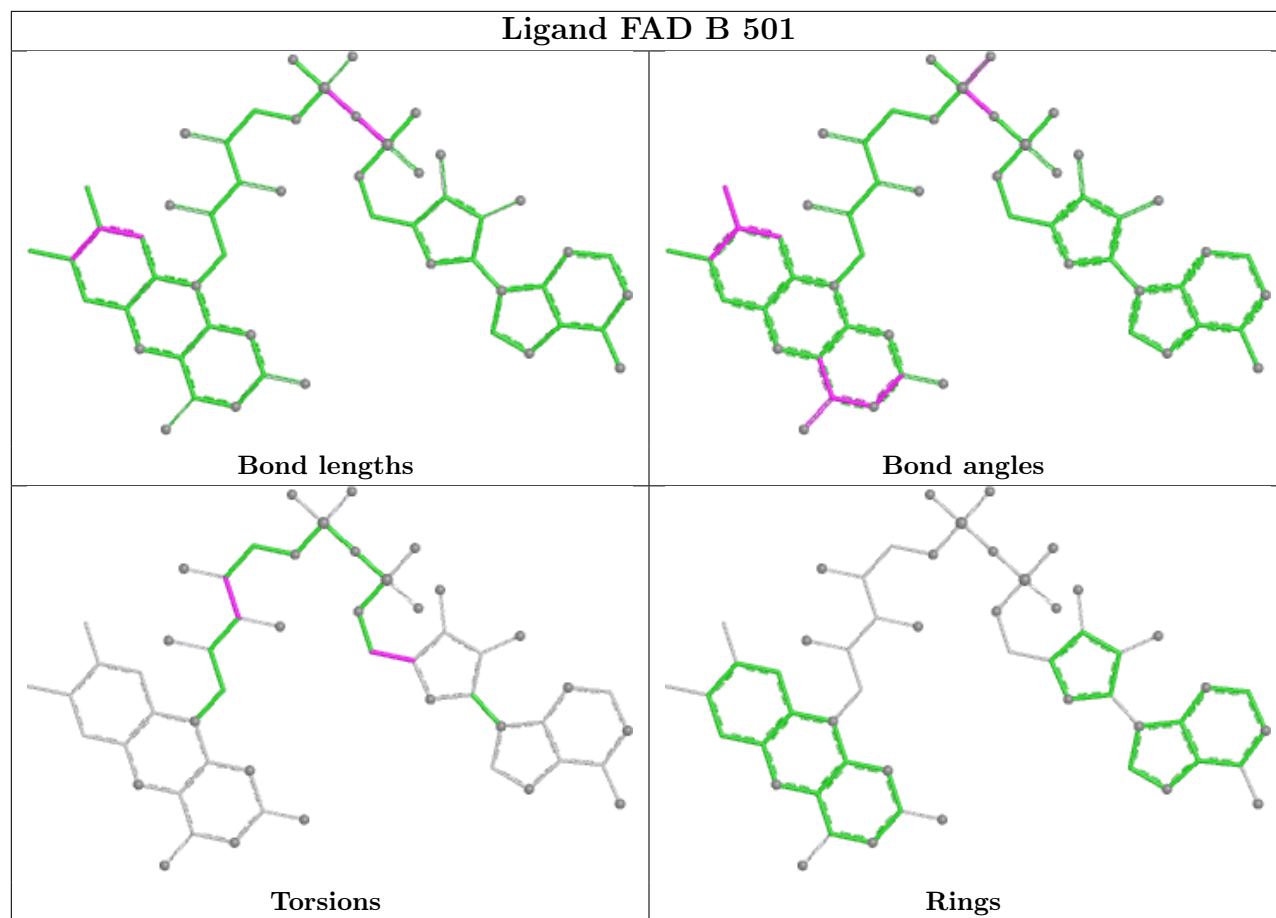
Mol	Chain	Res	Type	Atoms
2	A	501	FAD	O2'-C2'-C3'-O3'
2	A	501	FAD	C3'-C4'-C5'-O5'
2	B	501	FAD	O3'-C3'-C4'-C5'
3	B	504	GOL	O2-C2-C3-O3
2	B	501	FAD	O4B-C4B-C5B-O5B
2	B	501	FAD	O3'-C3'-C4'-O4'
3	B	502	GOL	O2-C2-C3-O3
2	A	501	FAD	P-O3P-PA-O1A
2	A	501	FAD	P-O3P-PA-O2A
2	A	501	FAD	O4B-C4B-C5B-O5B
2	B	501	FAD	C3B-C4B-C5B-O5B

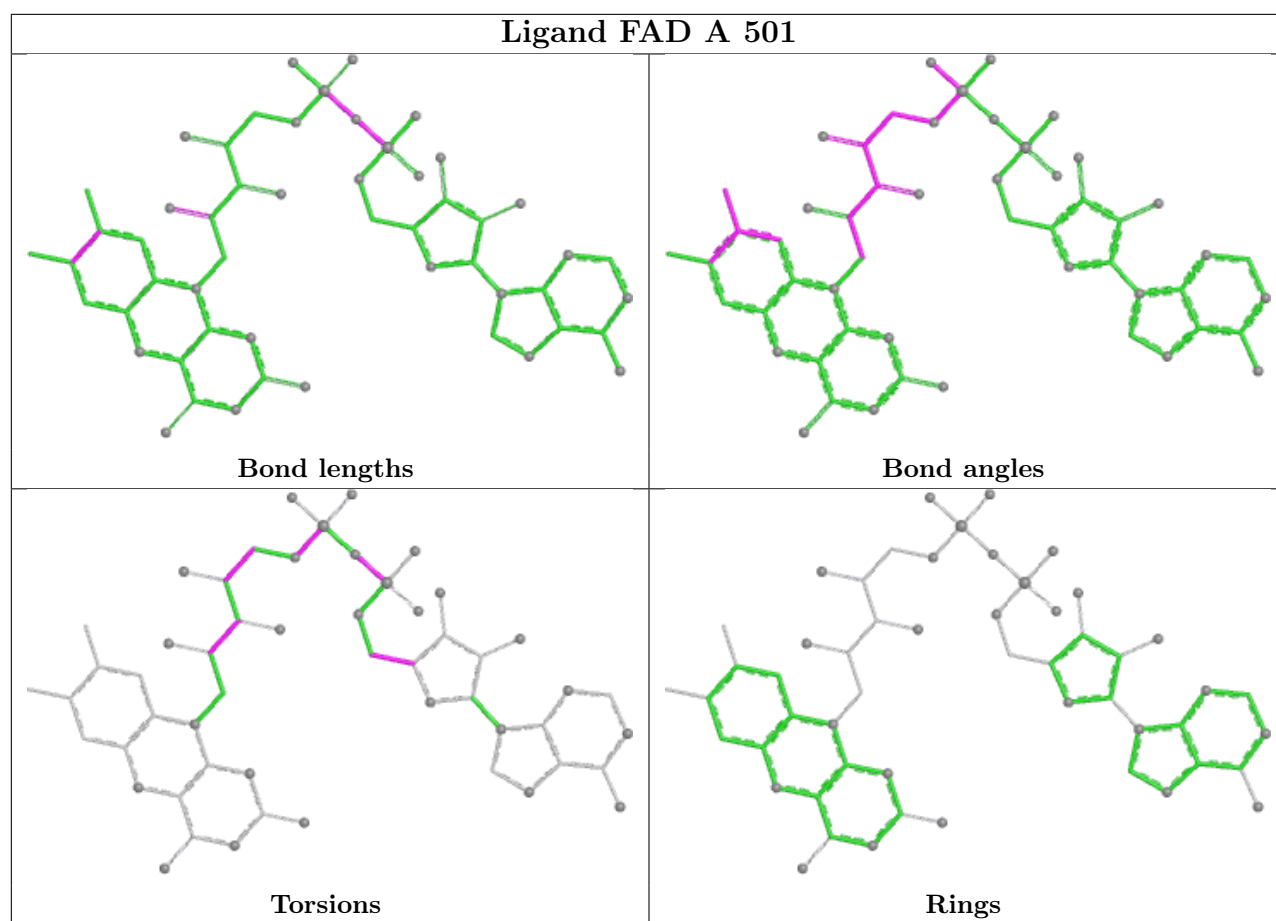
There are no ring outliers.

5 monomers are involved in 26 short contacts:

Mol	Chain	Res	Type	Clashes	Symm-Clashes
3	B	504	GOL	0	1
2	B	501	FAD	7	0
2	A	501	FAD	16	0
3	A	502	GOL	1	0
3	B	503	GOL	1	0

The following is a two-dimensional graphical depiction of Mogul quality analysis of bond lengths, bond angles, torsion angles, and ring geometry for all instances of the Ligand of Interest. In addition, ligands with molecular weight > 250 and outliers as shown on the validation Tables will also be included. For torsion angles, if less than 5% of the Mogul distribution of torsion angles is within 10 degrees of the torsion angle in question, then that torsion angle is considered an outlier. Any bond that is central to one or more torsion angles identified as an outlier by Mogul will be highlighted in the graph. For rings, the root-mean-square deviation (RMSD) between the ring in question and similar rings identified by Mogul is calculated over all ring torsion angles. If the average RMSD is greater than 60 degrees and the minimal RMSD between the ring in question and any Mogul-identified rings is also greater than 60 degrees, then that ring is considered an outlier. The outliers are highlighted in purple. The color gray indicates Mogul did not find sufficient equivalents in the CSD to analyse the geometry.





5.7 Other polymers [i](#)

There are no such residues in this entry.

5.8 Polymer linkage issues [i](#)

There are no chain breaks in this entry.

6 Fit of model and data ⓘ

6.1 Protein, DNA and RNA chains ⓘ

In the following table, the column labelled ‘#RSRZ > 2’ contains the number (and percentage) of RSRZ outliers, followed by percent RSRZ outliers for the chain as percentile scores relative to all X-ray entries and entries of similar resolution. The OWAB column contains the minimum, median, 95th percentile and maximum values of the occupancy-weighted average B-factor per residue. The column labelled ‘Q < 0.9’ lists the number of (and percentage) of residues with an average occupancy less than 0.9.

Mol	Chain	Analysed	<RSRZ>	#RSRZ>2	OWAB(Å ²)	Q<0.9
1	A	416/424 (98%)	0.19	19 (4%) 37 39	16, 36, 75, 112	6 (1%)
1	B	416/424 (98%)	0.21	14 (3%) 48 50	15, 37, 76, 110	7 (1%)
All	All	832/848 (98%)	0.20	33 (3%) 42 44	15, 37, 75, 112	13 (1%)

All (33) RSRZ outliers are listed below:

Mol	Chain	Res	Type	RSRZ
1	A	253	VAL	5.7
1	A	2	ALA	5.1
1	B	255	PHE	3.8
1	A	255	PHE	3.5
1	A	112	ILE	3.4
1	A	415	ALA	3.2
1	A	1	MET	3.0
1	B	300	HIS	2.8
1	A	304	THR	2.8
1	B	410	PRO	2.8
1	A	108[A]	GLU	2.7
1	B	253	VAL	2.7
1	B	63	GLY	2.7
1	A	300	HIS	2.7
1	B	55	LEU	2.6
1	B	248	VAL	2.6
1	A	406[A]	ARG	2.6
1	B	409	ALA	2.6
1	B	115	ALA	2.5
1	B	64	ALA	2.5
1	A	298	CYS	2.4
1	A	409	ALA	2.3
1	A	301	PRO	2.2
1	A	410	PRO	2.2

Continued on next page...

Continued from previous page...

Mol	Chain	Res	Type	RSRZ
1	A	302	THR	2.2
1	A	131	LEU	2.1
1	B	52	GLY	2.1
1	A	252	ASP	2.1
1	B	303	ASP	2.1
1	A	256	PHE	2.1
1	B	415	ALA	2.1
1	A	408	GLU	2.0
1	B	289	LYS	2.0

6.2 Non-standard residues in protein, DNA, RNA chains [i](#)

There are no non-standard protein/DNA/RNA residues in this entry.

6.3 Carbohydrates [i](#)

There are no oligosaccharides in this entry.

6.4 Ligands [i](#)

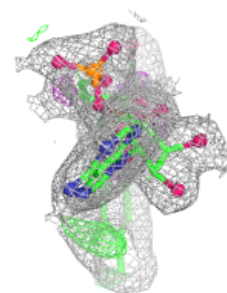
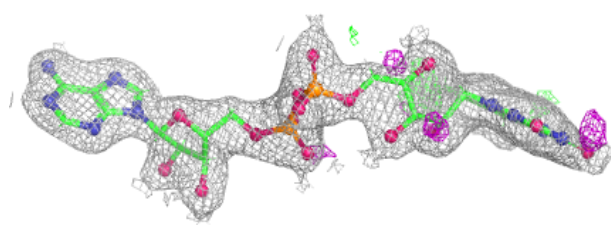
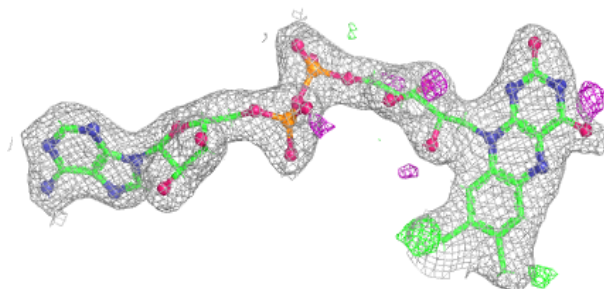
In the following table, the Atoms column lists the number of modelled atoms in the group and the number defined in the chemical component dictionary. The B-factors column lists the minimum, median, 95th percentile and maximum values of B factors of atoms in the group. The column labelled 'Q< 0.9' lists the number of atoms with occupancy less than 0.9.

Mol	Type	Chain	Res	Atoms	RSCC	RSR	B-factors(Å ²)	Q<0.9
3	GOL	B	503	6/6	0.85	0.15	60,64,83,84	2
3	GOL	A	503	6/6	0.88	0.13	57,70,76,77	2
3	GOL	A	502	6/6	0.88	0.18	55,66,70,70	2
3	GOL	B	504	6/6	0.89	0.14	60,63,74,75	2
3	GOL	B	502	6/6	0.90	0.13	44,56,61,61	2
2	FAD	A	501	53/53	0.95	0.07	25,35,41,47	5
2	FAD	B	501	53/53	0.96	0.07	27,35,44,47	5

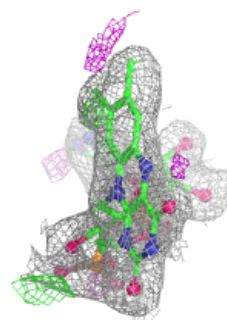
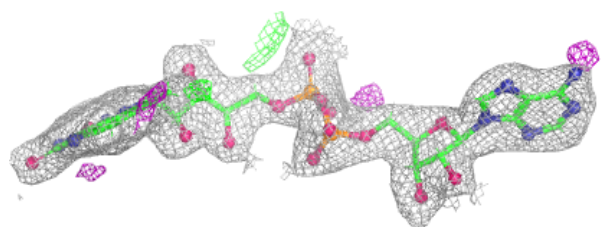
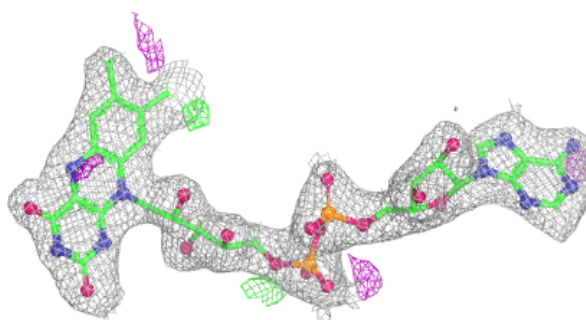
The following is a graphical depiction of the model fit to experimental electron density of all instances of the Ligand of Interest. In addition, ligands with molecular weight > 250 and outliers as shown on the geometry validation Tables will also be included. Each fit is shown from different orientation to approximate a three-dimensional view.

Electron density around FAD A 501:

$2mF_o-DF_c$ (at 0.7 rmsd) in gray
 mF_o-DF_c (at 3 rmsd) in purple (negative)
and green (positive)

**Electron density around FAD B 501:**

$2mF_o-DF_c$ (at 0.7 rmsd) in gray
 mF_o-DF_c (at 3 rmsd) in purple (negative)
and green (positive)



6.5 Other polymers ⓘ

There are no such residues in this entry.