



Full wwPDB X-ray Structure Validation Report ⓘ

Mar 9, 2026 – 05:21 AM UTC

PDB ID : 9GOO / pdb_00009goo
Title : Crystal structure of human carbonic anhydrase II in complex with PCI-27483
Authors : Angeli, A.; Ferraroni, M.
Deposited on : 2024-09-05
Resolution : 1.40 Å(reported)

This is a Full wwPDB X-ray Structure Validation Report for a publicly released PDB entry.

We welcome your comments at validation@mail.wwpdb.org

A user guide is available at

<https://www.wwpdb.org/validation/2017/XrayValidationReportHelp>

with specific help available everywhere you see the ⓘ symbol.

The types of validation reports are described at

<http://www.wwpdb.org/validation/2017/FAQs#types>.

The following versions of software and data (see [references ⓘ](#)) were used in the production of this report:

MolProbity : 4-5-2 with Phenix2.0
Mogul : 2022.3.0, CSD as543be (2022)
Xtriage (Phenix) : 2.0
EDS : 3.0
Buster-report : wwPDB partial adaption of 1.1.7 (2018)
Percentile statistics : 20250101.v01 (using entries in the PDB archive January 1st 2025)
CCP4 : 9.0.010 (Gargrove)
Density-Fitness : 1.0.12
Ideal geometry (proteins) : Engh & Huber (2001)
Ideal geometry (DNA, RNA) : Parkinson et al. (1996)
Validation Pipeline (wwPDB-VP) : 2.49

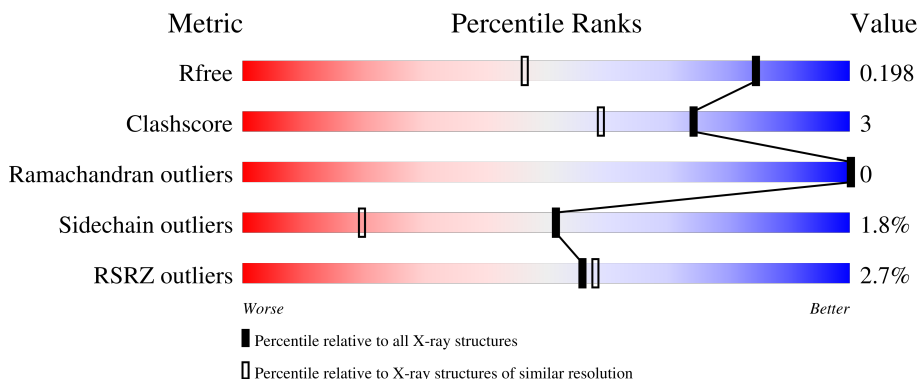
1 Overall quality at a glance

The following experimental techniques were used to determine the structure:

X-RAY DIFFRACTION


The reported resolution of this entry is 1.40 Å.

Percentile scores (ranging between 0-100) for global validation metrics of the entry are shown in the following graphic. The table shows the number of entries on which the scores are based.



Metric	Whole archive (#Entries)	Similar resolution (#Entries, resolution range(Å))
R_{free}	180053	2563 (1.40-1.40)
Clashscore	190562	2660 (1.40-1.40)
Ramachandran outliers	187476	2611 (1.40-1.40)
Sidechain outliers	187428	2610 (1.40-1.40)
RSRZ outliers	180081	2561 (1.40-1.40)

The table below summarises the geometric issues observed across the polymeric chains and their fit to the electron density. The red, orange, yellow and green segments of the lower bar indicate the fraction of residues that contain outliers for ≥ 3 , 2, 1 and 0 types of geometric quality criteria respectively. A grey segment represents the fraction of residues that are not modelled. The numeric value for each fraction is indicated below the corresponding segment, with a dot representing fractions $\leq 5\%$. The upper red bar (where present) indicates the fraction of residues that have poor fit to the electron density. The numeric value is given above the bar.

Mol	Chain	Length	Quality of chain
1	AAA	260	

2 Entry composition [i](#)

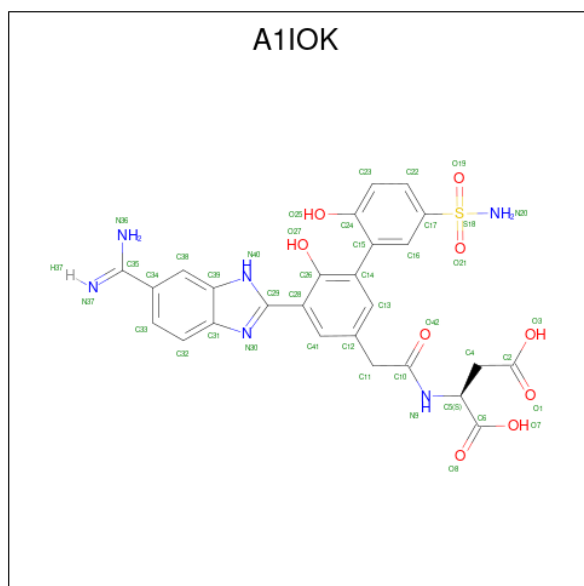
There are 5 unique types of molecules in this entry. The entry contains 2410 atoms, of which 0 are hydrogens and 0 are deuteriums.

In the tables below, the ZeroOcc column contains the number of atoms modelled with zero occupancy, the AltConf column contains the number of residues with at least one atom in alternate conformation and the Trace column contains the number of residues modelled with at most 2 atoms.

- Molecule 1 is a protein called Carbonic anhydrase 2.

Mol	Chain	Residues	Atoms					ZeroOcc	AltConf	Trace
1	AAA	258	Total	C	N	O	S	0	16	0
			2077	1337	353	385	2			

- Molecule 2 is PCI-27483 (CCD ID: A1IOK) (formula: C₂₆H₂₄N₆O₉S) (labeled as "Ligand of Interest" by depositor).



Mol	Chain	Residues	Atoms					ZeroOcc	AltConf
2	AAA	1	Total	C	N	O	S	0	1
			84	52	12	18	2		

- Molecule 3 is 1,2-ETHANEDIOL (CCD ID: EDO) (formula: C₂H₆O₂).



Mol	Chain	Residues	Atoms			ZeroOcc	AltConf
3	AAA	1	Total	C	O	0	0
			4	2	2		

- Molecule 4 is ZINC ION (CCD ID: ZN) (formula: Zn).

Mol	Chain	Residues	Atoms		ZeroOcc	AltConf
4	AAA	1	Total	Zn	0	0
			1	1		

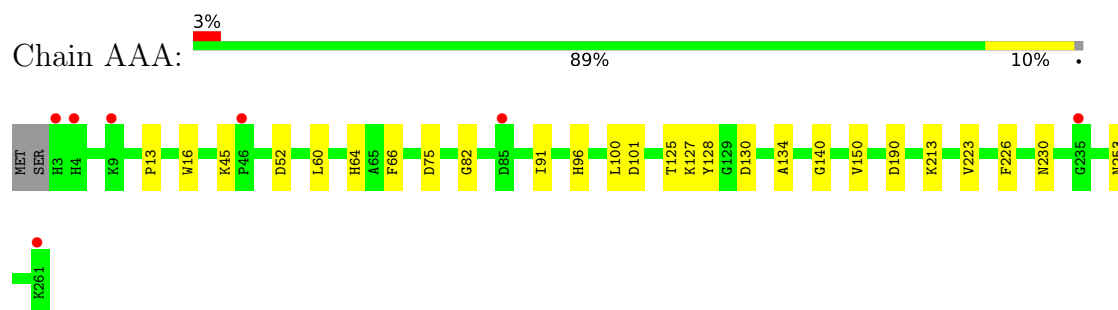
- Molecule 5 is water.

Mol	Chain	Residues	Atoms		ZeroOcc	AltConf
5	AAA	244	Total	O	0	0
			244	244		

3 Residue-property plots [i](#)

These plots are drawn for all protein, RNA, DNA and oligosaccharide chains in the entry. The first graphic for a chain summarises the proportions of the various outlier classes displayed in the second graphic. The second graphic shows the sequence view annotated by issues in geometry and electron density. Residues are color-coded according to the number of geometric quality criteria for which they contain at least one outlier: green = 0, yellow = 1, orange = 2 and red = 3 or more. A red dot above a residue indicates a poor fit to the electron density ($RSRZ > 2$). Stretches of 2 or more consecutive residues without any outlier are shown as a green connector. Residues present in the sample, but not in the model, are shown in grey.

- Molecule 1: Carbonic anhydrase 2



4 Data and refinement statistics

Property	Value	Source
Space group	P 1 21 1	Depositor
Cell constants a, b, c, α , β , γ	42.51Å 41.74Å 72.50Å 90.00° 104.63° 90.00°	Depositor
Resolution (Å)	40.22 – 1.40 40.22 – 1.40	Depositor EDS
% Data completeness (in resolution range)	95.5 (40.22-1.40) 95.5 (40.22-1.40)	Depositor EDS
R_{merge}	0.05	Depositor
R_{sym}	(Not available)	Depositor
$\langle I/\sigma(I) \rangle$ ¹	4.13 (at 1.40Å)	Xtriage
Refinement program	REFMAC 5.8.0258	Depositor
R, R_{free}	0.151 , 0.193 0.163 , 0.198	Depositor DCC
R_{free} test set	2249 reflections (4.62%)	wwPDB-VP
Wilson B-factor (Å ²)	12.0	Xtriage
Anisotropy	0.500	Xtriage
Bulk solvent k_{sol} (e/Å ³), B_{sol} (Å ²)	0.32 , 36.3	EDS
L-test for twinning ²	$\langle L \rangle = 0.50$, $\langle L^2 \rangle = 0.34$	Xtriage
Estimated twinning fraction	0.018 for h,-k,-h-l	Xtriage
F_o, F_c correlation	0.96	EDS
Total number of atoms	2410	wwPDB-VP
Average B, all atoms (Å ²)	19.0	wwPDB-VP

Xtriage's analysis on translational NCS is as follows: *The largest off-origin peak in the Patterson function is 7.36% of the height of the origin peak. No significant pseudotranslation is detected.*

¹Intensities estimated from amplitudes.

²Theoretical values of $\langle |L| \rangle$, $\langle L^2 \rangle$ for acentric reflections are 0.5, 0.333 respectively for untwinned datasets, and 0.375, 0.2 for perfectly twinned datasets.

5 Model quality

5.1 Standard geometry

Bond lengths and bond angles in the following residue types are not validated in this section: EDO, A1IOK, ZN

The Z score for a bond length (or angle) is the number of standard deviations the observed value is removed from the expected value. A bond length (or angle) with $|Z| > 5$ is considered an outlier worth inspection. RMSZ is the root-mean-square of all Z scores of the bond lengths (or angles).

Mol	Chain	Bond lengths		Bond angles	
		RMSZ	$\# Z > 5$	RMSZ	$\# Z > 5$
1	AAA	1.21	4/2157 (0.2%)	1.22	5/2928 (0.2%)

All (4) bond length outliers are listed below:

Mol	Chain	Res	Type	Atoms	Z	Observed(Å)	Ideal(Å)
1	AAA	125	THR	C-N	8.07	1.45	1.33
1	AAA	150	VAL	C-O	6.30	1.30	1.24
1	AAA	96	HIS	CE1-NE2	5.75	1.38	1.32
1	AAA	253	ASN	C-O	5.58	1.32	1.23

All (5) bond angle outliers are listed below:

Mol	Chain	Res	Type	Atoms	Z	Observed(°)	Ideal(°)
1	AAA	190	ASP	CA-CB-CG	6.48	119.08	112.60
1	AAA	101	ASP	CA-CB-CG	6.42	119.02	112.60
1	AAA	130	ASP	CA-CB-CG	5.58	118.18	112.60
1	AAA	230	ASN	CA-CB-CG	5.52	118.12	112.60
1	AAA	226	PHE	CA-CB-CG	5.38	119.18	113.80

There are no chirality outliers.

There are no planarity outliers.

5.2 Too-close contacts

In the following table, the Non-H and H(model) columns list the number of non-hydrogen atoms and hydrogen atoms in the chain respectively. The H(added) column lists the number of hydrogen atoms added and optimized by MolProbity. The Clashes column lists the number of clashes within the asymmetric unit, whereas Symm-Clashes lists symmetry-related clashes.

Mol	Chain	Non-H	H(model)	H(added)	Clashes	Symm-Clashes
1	AAA	2077	0	2031	8	0
2	AAA	84	0	0	5	0
3	AAA	4	0	6	1	0
4	AAA	1	0	0	0	0
5	AAA	244	0	0	5	0
All	All	2410	0	2037	13	0

The all-atom clashscore is defined as the number of clashes found per 1000 atoms (including hydrogen atoms). The all-atom clashscore for this structure is 3.

All (13) close contacts within the same asymmetric unit are listed below, sorted by their clash magnitude.

Atom-1	Atom-2	Interatomic distance (Å)	Clash overlap (Å)
2:AAA:301[B]:A1IOK:O25	2:AAA:301[B]:A1IOK:O27	2.12	0.65
2:AAA:301[B]:A1IOK:O25	2:AAA:301[B]:A1IOK:C26	2.44	0.65
1:AAA:45:LYS:O	1:AAA:82:GLY:HA2	2.07	0.54
3:AAA:302:EDO:H22	5:AAA:514:HOH:O	2.10	0.51
1:AAA:134:ALA:O	1:AAA:140:GLY:HA3	2.12	0.50
1:AAA:64:HIS:HB2	5:AAA:597:HOH:O	2.13	0.47
1:AAA:127:LYS:HE3	1:AAA:128:TYR:CZ	2.49	0.47
1:AAA:91:ILE:HD11	2:AAA:301[B]:A1IOK:C38	2.46	0.46
1:AAA:13:PRO:HA	1:AAA:16:TRP:CD2	2.53	0.44
2:AAA:301[B]:A1IOK:C38	5:AAA:586:HOH:O	2.65	0.43
1:AAA:213[A]:LYS:HE2	5:AAA:594:HOH:O	2.19	0.42
1:AAA:60:LEU:O	1:AAA:66:PHE:HA	2.20	0.41
2:AAA:301[A]:A1IOK:C38	5:AAA:586:HOH:O	2.69	0.41

There are no symmetry-related clashes.

5.3 Torsion angles ⓘ

5.3.1 Protein backbone ⓘ

In the following table, the Percentiles column shows the percent Ramachandran outliers of the chain as a percentile score with respect to all X-ray entries followed by that with respect to entries of similar resolution.

The Analysed column shows the number of residues for which the backbone conformation was analysed, and the total number of residues.

Mol	Chain	Analysed	Favoured	Allowed	Outliers	Percentiles	
1	AAA	262/260 (101%)	254 (97%)	8 (3%)	0	100	100

There are no Ramachandran outliers to report.

5.3.2 Protein sidechains ⓘ

In the following table, the Percentiles column shows the percent sidechain outliers of the chain as a percentile score with respect to all X-ray entries followed by that with respect to entries of similar resolution.

The Analysed column shows the number of residues for which the sidechain conformation was analysed, and the total number of residues.

Mol	Chain	Analysed	Rotameric	Outliers	Percentiles	
1	AAA	226/225 (100%)	221 (98%)	5 (2%)	45	14

All (5) residues with a non-rotameric sidechain are listed below:

Mol	Chain	Res	Type
1	AAA	52	ASP
1	AAA	75	ASP
1	AAA	100	LEU
1	AAA	223[A]	VAL
1	AAA	223[B]	VAL

Sometimes sidechains can be flipped to improve hydrogen bonding and reduce clashes. There are no such sidechains identified.

5.3.3 RNA ⓘ

There are no RNA molecules in this entry.

5.4 Non-standard residues in protein, DNA, RNA chains ⓘ

There are no non-standard protein/DNA/RNA residues in this entry.

5.5 Carbohydrates ⓘ

There are no oligosaccharides in this entry.

5.6 Ligand geometry

Of 4 ligands modelled in this entry, 1 is monoatomic - leaving 3 for Mogul analysis.

In the following table, the Counts columns list the number of bonds (or angles) for which Mogul statistics could be retrieved, the number of bonds (or angles) that are observed in the model and the number of bonds (or angles) that are defined in the Chemical Component Dictionary. The Link column lists molecule types, if any, to which the group is linked. The Z score for a bond length (or angle) is the number of standard deviations the observed value is removed from the expected value. A bond length (or angle) with $|Z| > 2$ is considered an outlier worth inspection. RMSZ is the root-mean-square of all Z scores of the bond lengths (or angles).

Mol	Type	Chain	Res	Link	Bond lengths			Bond angles		
					Counts	RMSZ	# Z > 2	Counts	RMSZ	# Z > 2
3	EDO	AAA	302	-	3,3,3	0.55	0	2,2,2	0.34	0
2	A1IOK	AAA	301[A]	4	45,45,45	0.80	1 (2%)	64,67,67	1.12	4 (6%)
2	A1IOK	AAA	301[B]	4	45,45,45	0.83	1 (2%)	64,67,67	1.26	6 (9%)

In the following table, the Chirals column lists the number of chiral outliers, the number of chiral centers analysed, the number of these observed in the model and the number defined in the Chemical Component Dictionary. Similar counts are reported in the Torsion and Rings columns. '-' means no outliers of that kind were identified.

Mol	Type	Chain	Res	Link	Chirals	Torsions	Rings
3	EDO	AAA	302	-	-	1/1/1/1	-
2	A1IOK	AAA	301[A]	4	-	13/34/34/34	0/4/4/4
2	A1IOK	AAA	301[B]	4	-	14/34/34/34	0/4/4/4

All (2) bond length outliers are listed below:

Mol	Chain	Res	Type	Atoms	Z	Observed(Å)	Ideal(Å)
2	AAA	301[B]	A1IOK	O8-C6	3.67	1.33	1.22
2	AAA	301[A]	A1IOK	O1-C2	3.11	1.32	1.22

All (10) bond angle outliers are listed below:

Mol	Chain	Res	Type	Atoms	Z	Observed(°)	Ideal(°)
2	AAA	301[A]	A1IOK	C17-S18-N20	4.99	115.36	108.40
2	AAA	301[B]	A1IOK	C14-C15-C24	-4.90	111.97	123.00
2	AAA	301[B]	A1IOK	C17-S18-N20	-4.03	102.79	108.40
2	AAA	301[A]	A1IOK	O21-S18-C17	-3.71	103.16	107.35
2	AAA	301[B]	A1IOK	C16-C15-C14	3.67	127.71	119.01
2	AAA	301[B]	A1IOK	C22-C17-S18	-2.89	115.81	119.72
2	AAA	301[A]	A1IOK	C5-C4-C2	2.80	120.61	112.75

Continued on next page...

Continued from previous page...

Mol	Chain	Res	Type	Atoms	Z	Observed(°)	Ideal(°)
2	AAA	301[A]	A1IOK	O19-S18-N20	2.40	110.81	107.35
2	AAA	301[B]	A1IOK	O21-S18-C17	2.36	110.02	107.35
2	AAA	301[B]	A1IOK	O7-C6-O8	2.20	129.08	124.08

There are no chirality outliers.

All (28) torsion outliers are listed below:

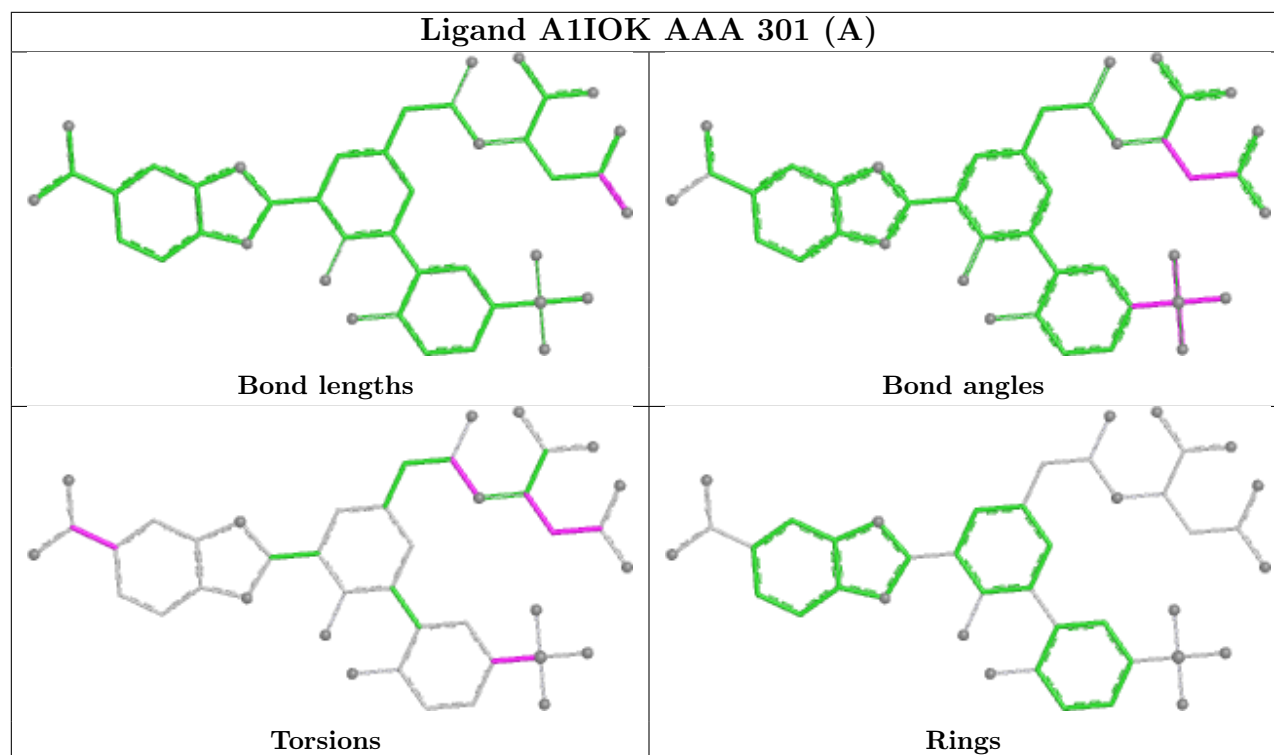
Mol	Chain	Res	Type	Atoms
2	AAA	301[B]	A1IOK	C2-C4-C5-C6
2	AAA	301[B]	A1IOK	C2-C4-C5-N9
2	AAA	301[B]	A1IOK	C11-C10-N9-C5
2	AAA	301[A]	A1IOK	O42-C10-N9-C5
2	AAA	301[B]	A1IOK	O42-C10-N9-C5
2	AAA	301[A]	A1IOK	C11-C10-N9-C5
2	AAA	301[A]	A1IOK	C22-C17-S18-N20
2	AAA	301[A]	A1IOK	C16-C17-S18-N20
2	AAA	301[A]	A1IOK	C2-C4-C5-C6
3	AAA	302	EDO	O1-C1-C2-O2
2	AAA	301[A]	A1IOK	C2-C4-C5-N9
2	AAA	301[A]	A1IOK	C22-C17-S18-O19
2	AAA	301[A]	A1IOK	C16-C17-S18-O19
2	AAA	301[B]	A1IOK	C10-C11-C12-C41
2	AAA	301[A]	A1IOK	O1-C2-C4-C5
2	AAA	301[B]	A1IOK	O1-C2-C4-C5
2	AAA	301[B]	A1IOK	O3-C2-C4-C5
2	AAA	301[B]	A1IOK	C10-C11-C12-C13
2	AAA	301[A]	A1IOK	O3-C2-C4-C5
2	AAA	301[A]	A1IOK	C33-C34-C35-N36
2	AAA	301[A]	A1IOK	C38-C34-C35-N36
2	AAA	301[B]	A1IOK	C33-C34-C35-N36
2	AAA	301[B]	A1IOK	C38-C34-C35-N36
2	AAA	301[B]	A1IOK	C22-C17-S18-O19
2	AAA	301[B]	A1IOK	C16-C17-S18-O19
2	AAA	301[A]	A1IOK	C33-C34-C35-N37
2	AAA	301[B]	A1IOK	C33-C34-C35-N37
2	AAA	301[B]	A1IOK	C38-C34-C35-N37

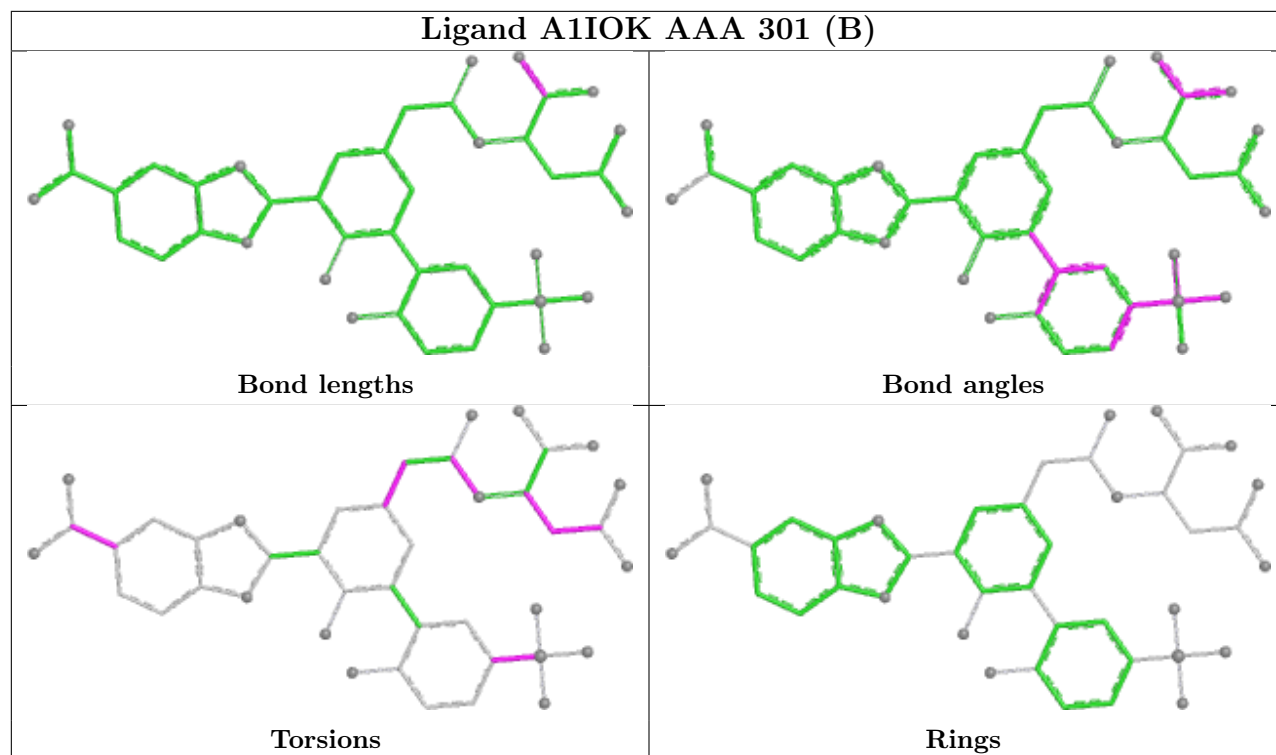
There are no ring outliers.

3 monomers are involved in 6 short contacts:

Mol	Chain	Res	Type	Clashes	Symm-Clashes
3	AAA	302	EDO	1	0
2	AAA	301[A]	A1IOK	1	0
2	AAA	301[B]	A1IOK	4	0

The following is a two-dimensional graphical depiction of Mogul quality analysis of bond lengths, bond angles, torsion angles, and ring geometry for all instances of the Ligand of Interest. In addition, ligands with molecular weight > 250 and outliers as shown on the validation Tables will also be included. For torsion angles, if less than 5% of the Mogul distribution of torsion angles is within 10 degrees of the torsion angle in question, then that torsion angle is considered an outlier. Any bond that is central to one or more torsion angles identified as an outlier by Mogul will be highlighted in the graph. For rings, the root-mean-square deviation (RMSD) between the ring in question and similar rings identified by Mogul is calculated over all ring torsion angles. If the average RMSD is greater than 60 degrees and the minimal RMSD between the ring in question and any Mogul-identified rings is also greater than 60 degrees, then that ring is considered an outlier. The outliers are highlighted in purple. The color gray indicates Mogul did not find sufficient equivalents in the CSD to analyse the geometry.





5.7 Other polymers [i](#)

There are no such residues in this entry.

5.8 Polymer linkage issues [i](#)

There are no chain breaks in this entry.

6 Fit of model and data [i](#)

6.1 Protein, DNA and RNA chains [i](#)

In the following table, the column labelled ‘#RSRZ > 2’ contains the number (and percentage) of RSRZ outliers, followed by percent RSRZ outliers for the chain as percentile scores relative to all X-ray entries and entries of similar resolution. The OWAB column contains the minimum, median, 95th percentile and maximum values of the occupancy-weighted average B-factor per residue. The column labelled ‘Q < 0.9’ lists the number of (and percentage) of residues with an average occupancy less than 0.9.

Mol	Chain	Analysed	<RSRZ>	#RSRZ>2	OWAB(Å ²)	Q<0.9
1	AAA	258/260 (99%)	0.07	7 (2%) 56 58	8, 14, 33, 52	9 (3%)

All (7) RSRZ outliers are listed below:

Mol	Chain	Res	Type	RSRZ
1	AAA	3	HIS	3.8
1	AAA	9	LYS	3.2
1	AAA	4	HIS	2.4
1	AAA	235	GLY	2.2
1	AAA	261	LYS	2.1
1	AAA	46	PRO	2.1
1	AAA	85[A]	ASP	2.0

6.2 Non-standard residues in protein, DNA, RNA chains [i](#)

There are no non-standard protein/DNA/RNA residues in this entry.

6.3 Carbohydrates [i](#)

There are no oligosaccharides in this entry.

6.4 Ligands [i](#)

In the following table, the Atoms column lists the number of modelled atoms in the group and the number defined in the chemical component dictionary. The B-factors column lists the minimum, median, 95th percentile and maximum values of B factors of atoms in the group. The column labelled ‘Q < 0.9’ lists the number of atoms with occupancy less than 0.9.

Mol	Type	Chain	Res	Atoms	RSCC	RSR	B-factors(Å ²)	Q<0.9
2	A1IOK	AAA	301[A]	42/42	0.79	0.23	9,43,107,127	42

Continued on next page...

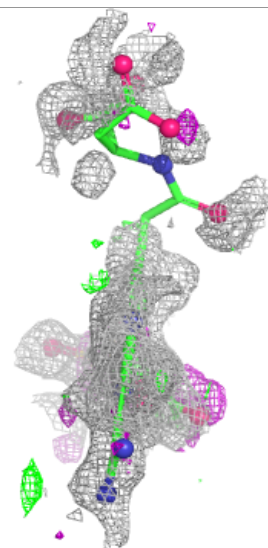
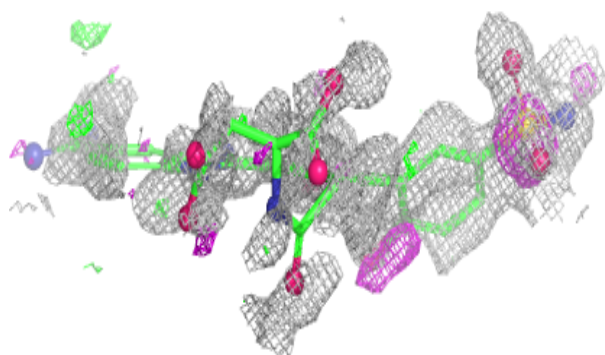
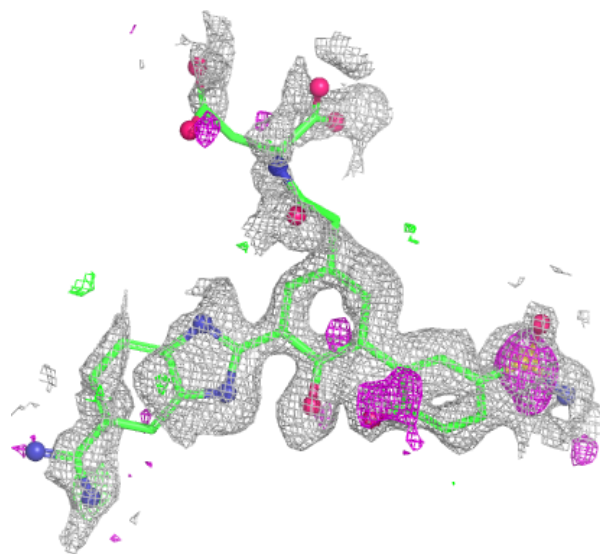
Continued from previous page...

Mol	Type	Chain	Res	Atoms	RSCC	RSR	B-factors(\AA^2)	Q<0.9
2	A1IOK	AAA	301[B]	42/42	0.79	0.23	15,33,113,132	42
3	EDO	AAA	302	4/4	0.91	0.12	18,19,25,33	0
4	ZN	AAA	303	1/1	1.00	0.01	8,8,8,8	0

The following is a graphical depiction of the model fit to experimental electron density of all instances of the Ligand of Interest. In addition, ligands with molecular weight > 250 and outliers as shown on the geometry validation Tables will also be included. Each fit is shown from different orientation to approximate a three-dimensional view.

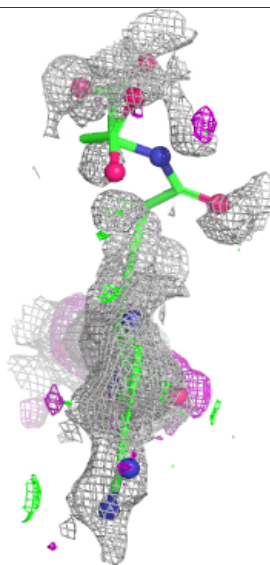
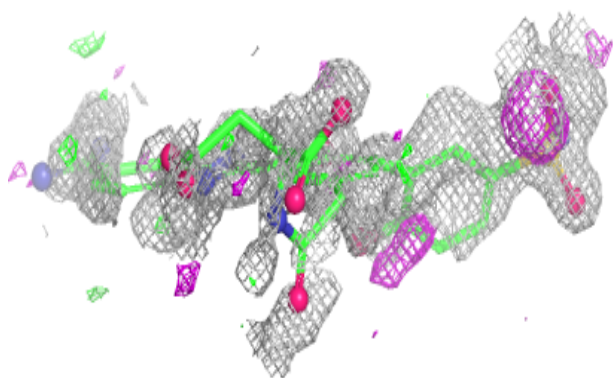
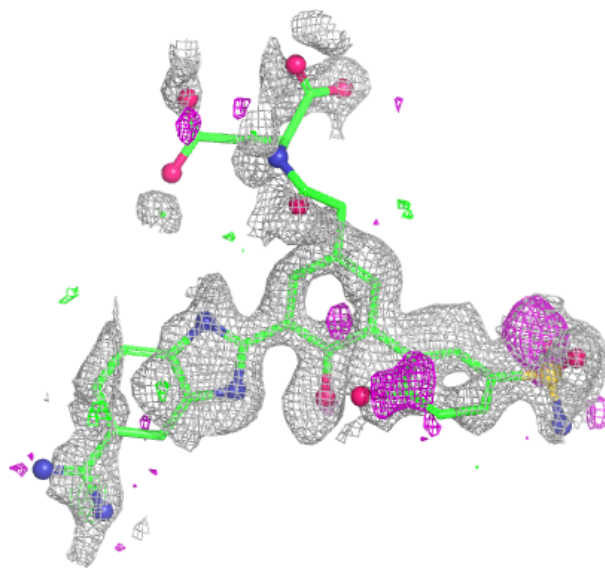
Electron density around A1IOK AAA 301 (A):

2mF_o-DF_c (at 0.7 rmsd) in gray
mF_o-DF_c (at 3 rmsd) in purple (negative)
and green (positive)



Electron density around A1IOK AAA 301 (B):

2mF_o-DF_c (at 0.7 rmsd) in gray
mF_o-DF_c (at 3 rmsd) in purple (negative)
and green (positive)



6.5 Other polymers ⓘ

There are no such residues in this entry.