



Full wwPDB EM Validation Report ⓘ

Feb 28, 2026 – 09:49 PM UTC

PDB ID : 9GO0 / pdb_00009go0
EMDB ID : EMD-13486
Title : Cryo-EM structure of ShCas12k in complex with a sgRNA and a dsDNA target
Authors : Schmitz, M.; Querques, I.; Oberli, S.; Chanez, C.; Jinek, M.
Deposited on : 2024-09-04
Resolution : 3.04 Å(reported)

This is a Full wwPDB EM Validation Report for a publicly released PDB entry.

We welcome your comments at validation@mail.wwpdb.org

A user guide is available at

<https://www.wwpdb.org/validation/2017/EMValidationReportHelp>

with specific help available everywhere you see the ⓘ symbol.

The types of validation reports are described at

<http://www.wwpdb.org/validation/2017/FAQs#types>.

The following versions of software and data (see [references ⓘ](#)) were used in the production of this report:

EMDB validation analysis : 0.0.1.dev132
MolProbity : 4-5-2 with Phenix2.0
Percentile statistics : 20250101.v01 (using entries in the PDB archive January 1st 2025)
EM percentile statistics : 202505.v01 (Using data in the EMDB archive up until May 2025)
MapQ : 1.9.13
Ideal geometry (proteins) : Engh & Huber (2001)
Ideal geometry (DNA, RNA) : Parkinson et al. (1996)
Validation Pipeline (wwPDB-VP) : 2.49

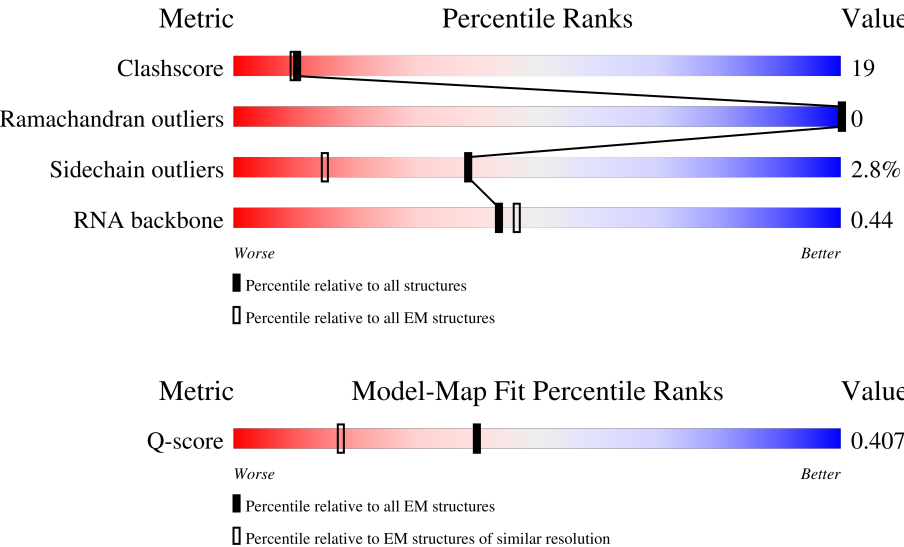
1 Overall quality at a glance i

The following experimental techniques were used to determine the structure:

ELECTRON MICROSCOPY

The reported resolution of this entry is 3.04 Å.

Percentile scores (ranging between 0-100) for global validation metrics of the entry are shown in the following graphic. The table shows the number of entries on which the scores are based.



Metric	Whole archive (#Entries)	EM structures (#Entries)	Similar EM resolution (#Entries, resolution range(Å))
Clashscore	229148	23984	-
Ramachandran outliers	224038	23583	-
Sidechain outliers	223484	23102	-
RNA backbone	8273	3508	-
Q-score	-	25397	13952 (2.54 - 3.54)

The table below summarises the geometric issues observed across the polymeric chains and their fit to the map. The red, orange, yellow and green segments of the bar indicate the fraction of residues that contain outliers for ≥ 3 , 2, 1 and 0 types of geometric quality criteria respectively. A grey segment represents the fraction of residues that are not modelled. The numeric value for each fraction is indicated below the corresponding segment, with a dot representing fractions $\leq 5\%$. The upper red bar (where present) indicates the fraction of residues that have poor fit to the EM map (all-atom inclusion $< 40\%$). The numeric value is given above the bar.

Mol	Chain	Length	Quality of chain
1	A	641	
2	B	256	
3	C	50	

Continued on next page...

Continued from previous page...

Mol	Chain	Length	Quality of chain
4	D	50	<div><div></div><div>20%</div><div>80%</div></div>

2 Entry composition

There are 4 unique types of molecules in this entry. The entry contains 9014 atoms, of which 0 are hydrogens and 0 are deuteriums.

In the tables below, the AltConf column contains the number of residues with at least one atom in alternate conformation and the Trace column contains the number of residues modelled with at most 2 atoms.

- Molecule 1 is a protein called Cas12k.

Mol	Chain	Residues	Atoms					AltConf	Trace
1	A	437	Total	C	N	O	S	0	0
			3533	2234	643	645	11		

There are 3 discrepancies between the modelled and reference sequences:

Chain	Residue	Modelled	Actual	Comment	Reference
A	-1	SER	-	expression tag	UNP A0A8M0FGU0
A	0	ASN	-	expression tag	UNP A0A8M0FGU0
A	1	ALA	MET	conflict	UNP A0A8M0FGU0

- Molecule 2 is a RNA chain called sgRNA.

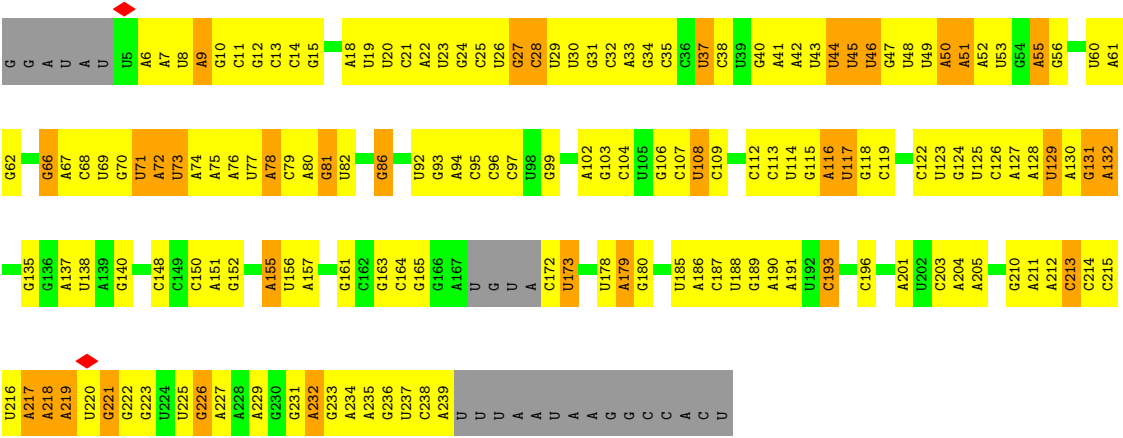
Mol	Chain	Residues	Atoms					AltConf	Trace
2	B	231	Total	C	N	O	P	0	0
			4916	2198	871	1617	230		

- Molecule 3 is a DNA chain called DNA target strand.

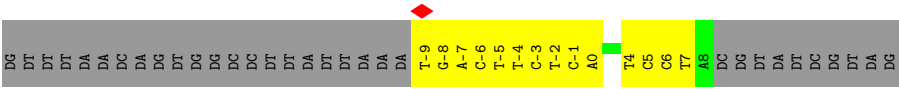
Mol	Chain	Residues	Atoms					AltConf	Trace
3	C	18	Total	C	N	O	P	0	0
			356	173	58	108	17		

- Molecule 4 is a DNA chain called DNA non-target strand.

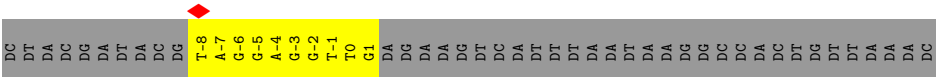
Mol	Chain	Residues	Atoms					AltConf	Trace
4	D	10	Total	C	N	O	P	0	0
			209	100	41	59	9		



• Molecule 3: DNA target strand



• Molecule 4: DNA non-target strand



4 Experimental information

Property	Value	Source
EM reconstruction method	SINGLE PARTICLE	Depositor
Imposed symmetry	POINT, Not provided	
Number of particles used	138000	Depositor
Resolution determination method	FSC 0.143 CUT-OFF	Depositor
CTF correction method	PHASE FLIPPING AND AMPLITUDE CORRECTION	Depositor
Microscope	FEI TITAN KRIOS	Depositor
Voltage (kV)	300	Depositor
Electron dose ($e^-/\text{\AA}^2$)	51.81	Depositor
Minimum defocus (nm)	900	Depositor
Maximum defocus (nm)	1900	Depositor
Magnification	Not provided	
Image detector	GATAN K3 BIOQUANTUM (6k x 4k)	Depositor
Maximum map value	0.291	Depositor
Minimum map value	-0.090	Depositor
Average map value	0.005	Depositor
Map value standard deviation	0.013	Depositor
Recommended contour level	0.055	Depositor
Map size (Å)	192.0, 192.0, 192.0	wwPDB
Map dimensions	300, 300, 300	wwPDB
Map angles (°)	90.0, 90.0, 90.0	wwPDB
Pixel spacing (Å)	0.64, 0.64, 0.64	Depositor

5 Model quality [i](#)

5.1 Standard geometry [i](#)

The Z score for a bond length (or angle) is the number of standard deviations the observed value is removed from the expected value. A bond length (or angle) with $|Z| > 5$ is considered an outlier worth inspection. RMSZ is the root-mean-square of all Z scores of the bond lengths (or angles).

Mol	Chain	Bond lengths		Bond angles	
		RMSZ	$\# Z > 5$	RMSZ	$\# Z > 5$
1	A	0.26	0/3603	0.40	0/4862
2	B	0.25	0/5495	0.30	0/8559
3	C	0.22	0/396	0.42	0/607
4	D	0.25	0/235	0.46	0/363
All	All	0.25	0/9729	0.35	0/14391

There are no bond length outliers.

There are no bond angle outliers.

There are no chirality outliers.

There are no planarity outliers.

5.2 Too-close contacts [i](#)

In the following table, the Non-H and H(model) columns list the number of non-hydrogen atoms and hydrogen atoms in the chain respectively. The H(added) column lists the number of hydrogen atoms added and optimized by MolProbity. The Clashes column lists the number of clashes within the asymmetric unit, whereas Symm-Clashes lists symmetry-related clashes.

Mol	Chain	Non-H	H(model)	H(added)	Clashes	Symm-Clashes
1	A	3533	0	3558	136	0
2	B	4916	0	2484	140	0
3	C	356	0	206	17	0
4	D	209	0	115	12	0
All	All	9014	0	6363	288	0

The all-atom clashscore is defined as the number of clashes found per 1000 atoms (including hydrogen atoms). The all-atom clashscore for this structure is 19.

All (288) close contacts within the same asymmetric unit are listed below, sorted by their clash magnitude.

Atom-1	Atom-2	Interatomic distance (Å)	Clash overlap (Å)
1:A:282:PRO:HB3	1:A:355:VAL:HG12	1.56	0.86
1:A:39:LEU:HD12	1:A:40:GLY:N	1.92	0.84
1:A:402:ILE:HG13	1:A:405:MET:HE3	1.59	0.84
1:A:35:LEU:HD12	1:A:87:VAL:HG11	1.61	0.82
1:A:24:MET:CE	1:A:356:TRP:HE1	1.95	0.79
1:A:458:PRO:HG2	1:A:488:LEU:HD11	1.66	0.76
2:B:79:C:H2'	2:B:80:A:H8	1.49	0.76
1:A:286:GLU:OE2	1:A:286:GLU:N	2.14	0.75
1:A:287:THR:HG22	1:A:289:GLU:H	1.54	0.73
1:A:547:LYS:NZ	1:A:610:GLU:OE1	2.22	0.72
1:A:24:MET:HE2	1:A:356:TRP:HE1	1.52	0.72
1:A:505:ALA:HB1	1:A:509:PHE:HB2	1.71	0.72
1:A:346:LEU:O	1:A:435:ARG:NH2	2.23	0.72
1:A:331:ASP:HB3	1:A:347:PHE:HD1	1.54	0.71
1:A:424:SER:OG	1:A:428:ARG:NH1	2.23	0.71
1:A:17:ARG:NH2	2:B:203:C:O2'	2.24	0.70
1:A:293:TRP:O	1:A:332:GLN:NE2	2.25	0.70
2:B:51:A:H2'	2:B:52:A:C8	2.26	0.70
1:A:0:ASN:ND2	1:A:378:ASP:OD1	2.25	0.69
1:A:421:ARG:NH1	4:D:-1:DT:O2	2.25	0.69
2:B:79:C:H2'	2:B:80:A:C8	2.27	0.69
2:B:211:A:H2'	2:B:212:A:H8	1.58	0.69
1:A:391:ARG:HG3	1:A:429:ILE:HG12	1.74	0.68
1:A:344:SER:HA	1:A:347:PHE:CD2	2.29	0.67
1:A:4:ILE:HB	2:B:231:G:H5'	1.75	0.67
1:A:507:LYS:NZ	2:B:157:A:OP2	2.26	0.67
3:C:5:DC:H2'	3:C:6:DC:C6	2.29	0.66
1:A:383:THR:HG23	1:A:386:GLY:H	1.61	0.66
2:B:50:A:O2'	2:B:51:A:H8	1.78	0.66
2:B:165:G:H1	2:B:173:U:H3	1.43	0.66
3:C:-8:DG:H2'	3:C:-7:DA:C8	2.30	0.65
1:A:344:SER:HA	1:A:347:PHE:CE2	2.32	0.64
3:C:4:DT:H2'	3:C:5:DC:C6	2.31	0.64
1:A:402:ILE:HG13	1:A:405:MET:CE	2.27	0.64
2:B:211:A:H2'	2:B:212:A:C8	2.32	0.64
2:B:108:U:H2'	2:B:109:C:C6	2.33	0.64
1:A:504:LYS:NZ	2:B:119:C:OP1	2.20	0.63
3:C:-8:DG:H2'	3:C:-7:DA:H8	1.63	0.63
1:A:20:LEU:O	1:A:24:MET:HG3	1.97	0.62
2:B:80:A:H2'	2:B:81:G:C8	2.34	0.62
1:A:465:ASP:OD1	1:A:468:ALA:N	2.32	0.62
2:B:213:C:H2'	2:B:214:C:C6	2.35	0.62

Continued on next page...

Continued from previous page...

Atom-1	Atom-2	Interatomic distance (Å)	Clash overlap (Å)
1:A:300:ARG:NH2	2:B:86:G:O6	2.33	0.61
2:B:185:U:H2'	2:B:186:A:C8	2.35	0.61
2:B:18:A:H2'	2:B:19:U:C6	2.36	0.60
1:A:362:LYS:H	1:A:368:LEU:HD11	1.66	0.60
2:B:80:A:H2'	2:B:81:G:H8	1.66	0.60
2:B:150:C:H2'	2:B:151:A:C8	2.36	0.60
2:B:232:A:H2'	2:B:233:G:C8	2.37	0.60
1:A:23:LEU:HD21	1:A:76:PRO:HB3	1.84	0.59
1:A:493:ARG:NH2	2:B:55:A:OP1	2.36	0.59
2:B:11:C:H2'	2:B:12:G:H8	1.66	0.59
1:A:551:MET:HA	1:A:551:MET:HE2	1.84	0.59
1:A:36:LEU:HA	1:A:39:LEU:HG	1.84	0.59
2:B:212:A:H2'	2:B:213:C:C6	2.38	0.59
1:A:81:MET:HE3	1:A:81:MET:H	1.66	0.59
2:B:225:U:H5''	2:B:226:G:H5'	1.83	0.59
2:B:6:A:N3	2:B:150:C:O2'	2.34	0.58
2:B:237:U:H2'	2:B:238:C:C6	2.38	0.58
1:A:548:LEU:O	1:A:551:MET:HB2	2.02	0.58
2:B:179:A:H2'	2:B:180:G:C8	2.38	0.58
2:B:116:A:H3'	2:B:117:U:H5''	1.84	0.58
3:C:-9:DT:H2'	3:C:-8:DG:C8	2.39	0.58
1:A:24:MET:CE	1:A:356:TRP:NE1	2.65	0.57
2:B:81:G:H2'	2:B:82:U:C6	2.39	0.57
1:A:29:THR:HG22	1:A:30:PRO:HD3	1.85	0.57
2:B:50:A:HO2'	2:B:51:A:H8	1.51	0.57
3:C:6:DC:H2'	3:C:7:DT:C6	2.39	0.57
2:B:217:A:H3'	2:B:218:A:H8	1.70	0.56
2:B:214:C:H2'	2:B:215:C:C6	2.41	0.56
2:B:131:G:H2'	2:B:132:A:H8	1.70	0.56
1:A:524:ASP:OD2	1:A:592:ARG:NH1	2.39	0.56
1:A:308:LEU:HB3	1:A:311:LEU:HB2	1.86	0.56
1:A:598:GLN:HA	1:A:608:ILE:HD12	1.87	0.56
1:A:24:MET:HE1	1:A:356:TRP:NE1	2.21	0.55
2:B:41:A:H2'	2:B:42:A:H8	1.71	0.55
2:B:14:C:O2'	2:B:52:A:N3	2.35	0.55
1:A:2:SER:OG	1:A:380:ARG:NH1	2.40	0.54
2:B:186:A:H2'	2:B:187:C:C6	2.42	0.54
2:B:26:U:H2'	2:B:27:G:C8	2.41	0.54
2:B:232:A:H2'	2:B:233:G:H8	1.73	0.54
1:A:24:MET:HE1	1:A:356:TRP:CD1	2.41	0.54
1:A:81:MET:HE3	1:A:81:MET:N	2.22	0.54

Continued on next page...

Continued from previous page...

Atom-1	Atom-2	Interatomic distance (Å)	Clash overlap (Å)
1:A:363:GLY:H	1:A:368:LEU:HD21	1.72	0.54
1:A:24:MET:HE1	1:A:356:TRP:HE1	1.73	0.54
1:A:410:ASP:HB2	1:A:415:GLN:HB2	1.91	0.53
2:B:11:C:H2'	2:B:12:G:C8	2.43	0.53
4:D:-4:DA:H4'	4:D:-3:DG:OP1	2.08	0.53
2:B:72:A:C5	2:B:73:U:H1'	2.43	0.53
3:C:-3:DC:H2'	3:C:-2:DT:C6	2.43	0.53
2:B:233:G:H2'	2:B:234:A:H8	1.74	0.53
2:B:163:G:H2'	2:B:164:C:C6	2.44	0.53
1:A:442:GLN:HG2	1:A:443:GLY:H	1.75	0.52
2:B:124:G:H2'	2:B:125:U:C6	2.45	0.52
1:A:36:LEU:CD2	1:A:87:VAL:HG22	2.39	0.52
2:B:151:A:H2'	2:B:152:G:C8	2.44	0.52
2:B:150:C:H2'	2:B:151:A:H8	1.74	0.52
2:B:107:C:H2'	2:B:108:U:C6	2.44	0.52
2:B:233:G:H2'	2:B:234:A:C8	2.44	0.52
1:A:455:LEU:HB2	1:A:555:VAL:HG23	1.91	0.52
2:B:66:G:H2'	2:B:67:A:H8	1.75	0.52
2:B:19:U:H2'	2:B:20:U:C6	2.45	0.52
1:A:348:THR:O	1:A:377:VAL:HG23	2.10	0.51
2:B:234:A:H2'	2:B:235:A:C8	2.45	0.51
2:B:77:U:H2'	2:B:78:A:C8	2.45	0.51
2:B:128:A:H4'	2:B:129:U:H5''	1.93	0.51
2:B:131:G:H2'	2:B:132:A:C8	2.46	0.51
2:B:210:G:H2'	2:B:211:A:H8	1.76	0.51
2:B:71:U:H2'	2:B:72:A:C8	2.46	0.51
1:A:10:LEU:HB3	1:A:313:PHE:HB3	1.91	0.51
2:B:70:G:H2'	2:B:71:U:O4'	2.11	0.51
2:B:179:A:H2'	2:B:180:G:H8	1.75	0.51
1:A:402:ILE:HA	1:A:405:MET:HE3	1.93	0.51
2:B:78:A:H2'	2:B:79:C:C6	2.46	0.51
1:A:79:LEU:HD22	1:A:283:LEU:HD11	1.93	0.51
1:A:335:LYS:HB2	1:A:347:PHE:CE1	2.46	0.51
2:B:76:A:H3'	2:B:77:U:C6	2.46	0.51
2:B:125:U:H2'	2:B:126:C:C6	2.46	0.51
2:B:96:C:O2'	2:B:190:A:N3	2.43	0.50
1:A:36:LEU:O	1:A:39:LEU:HD12	2.11	0.50
1:A:529:LYS:HE2	2:B:229:A:OP1	2.11	0.50
1:A:27:LEU:C	1:A:30:PRO:HD2	2.37	0.50
1:A:90:ILE:CD1	2:B:235:A:H5'	2.42	0.50
1:A:413:ASP:O	1:A:416:GLN:HG3	2.11	0.50

Continued on next page...

Continued from previous page...

Atom-1	Atom-2	Interatomic distance (Å)	Clash overlap (Å)
1:A:449:VAL:HG22	1:A:463:VAL:HG22	1.93	0.50
2:B:238:C:H2'	2:B:239:A:C8	2.47	0.50
2:B:33:A:H2'	2:B:34:G:C8	2.47	0.50
2:B:44:U:O2'	2:B:45:U:H6	1.94	0.50
2:B:124:G:H2'	2:B:125:U:H6	1.77	0.49
1:A:357:LEU:O	1:A:369:HIS:HA	2.13	0.49
1:A:39:LEU:HD12	1:A:39:LEU:C	2.36	0.49
1:A:79:LEU:HD22	1:A:283:LEU:HD21	1.95	0.49
1:A:90:ILE:HD11	2:B:235:A:H5'	1.95	0.49
2:B:214:C:H2'	2:B:215:C:H6	1.77	0.49
1:A:411:LEU:HD23	1:A:414:THR:HG23	1.93	0.49
2:B:41:A:H2'	2:B:42:A:C8	2.48	0.49
2:B:24:G:H2'	2:B:25:C:C6	2.48	0.49
1:A:461:VAL:HG13	1:A:475:ARG:HB2	1.94	0.49
2:B:151:A:H2'	2:B:152:G:H8	1.76	0.48
2:B:42:A:H2'	2:B:43:U:C6	2.48	0.48
1:A:348:THR:HG22	1:A:377:VAL:HG23	1.95	0.48
4:D:-6:DG:H2''	4:D:-5:DG:H8	1.77	0.48
1:A:288:ASN:ND2	1:A:350:ARG:O	2.45	0.48
3:C:-4:DT:H2'	3:C:-3:DC:C6	2.49	0.48
2:B:60:U:C2	2:B:193:C:C5	3.01	0.48
1:A:301:LEU:HD22	1:A:325:PHE:HB3	1.95	0.48
1:A:536:ARG:HG3	1:A:606:ILE:HD11	1.95	0.48
1:A:81:MET:HA	1:A:84:ILE:HD12	1.96	0.48
2:B:122:C:H2'	2:B:123:U:H6	1.78	0.47
2:B:25:C:H2'	2:B:26:U:C6	2.48	0.47
2:B:125:U:H2'	2:B:126:C:H6	1.80	0.47
2:B:237:U:H2'	2:B:238:C:H6	1.77	0.47
1:A:89:TYR:CE1	3:C:-2:DT:H4'	2.49	0.47
2:B:8:U:C5	2:B:9:A:H1'	2.49	0.47
2:B:216:U:N3	2:B:218:A:OP2	2.48	0.47
1:A:288:ASN:ND2	1:A:349:LEU:O	2.48	0.47
3:C:5:DC:H2'	3:C:6:DC:H6	1.77	0.47
1:A:63:CYS:SG	1:A:67:LYS:NZ	2.66	0.47
2:B:185:U:H2'	2:B:186:A:H8	1.80	0.47
1:A:24:MET:HE2	1:A:356:TRP:NE1	2.26	0.47
2:B:213:C:H2'	2:B:214:C:H6	1.79	0.47
2:B:37:U:H2'	2:B:38:C:C6	2.49	0.46
4:D:-8:DT:H2''	4:D:-7:DA:C8	2.50	0.46
1:A:81:MET:H	1:A:81:MET:CE	2.29	0.46
1:A:36:LEU:HD23	1:A:87:VAL:HG22	1.97	0.46

Continued on next page...

Continued from previous page...

Atom-1	Atom-2	Interatomic distance (Å)	Clash overlap (Å)
1:A:445:SER:O	1:A:634:ARG:NH2	2.42	0.46
2:B:19:U:H2'	2:B:20:U:H6	1.80	0.46
1:A:418:LEU:HG	1:A:422:LYS:HE2	1.98	0.46
2:B:238:C:H2'	2:B:239:A:H8	1.80	0.46
1:A:22:LYS:HE2	1:A:22:LYS:HB2	1.75	0.46
1:A:344:SER:HA	1:A:347:PHE:HD2	1.79	0.46
1:A:358:GLU:HA	1:A:369:HIS:CD2	2.50	0.46
4:D:-6:DG:H2''	4:D:-5:DG:C8	2.51	0.46
1:A:628:LEU:HD23	1:A:628:LEU:HA	1.76	0.46
1:A:361:GLY:N	1:A:368:LEU:HD11	2.31	0.46
2:B:34:G:H2'	2:B:35:C:C6	2.51	0.46
2:B:107:C:H2'	2:B:108:U:H6	1.81	0.46
1:A:308:LEU:HB3	1:A:311:LEU:HD23	1.98	0.45
2:B:217:A:H3'	2:B:218:A:C8	2.49	0.45
2:B:234:A:H2'	2:B:235:A:H8	1.81	0.45
1:A:327:ARG:HH12	1:A:382:TRP:HA	1.81	0.45
3:C:-7:DA:H2'	3:C:-6:DC:H6	1.81	0.45
1:A:17:ARG:HG2	1:A:356:TRP:HH2	1.81	0.45
2:B:190:A:H2'	2:B:191:A:C8	2.51	0.45
1:A:402:ILE:HG12	1:A:406:LYS:NZ	2.31	0.45
1:A:405:MET:SD	1:A:406:LYS:N	2.90	0.45
2:B:67:A:H2'	2:B:68:C:C6	2.52	0.45
2:B:70:G:O6	2:B:80:A:N6	2.50	0.45
2:B:114:U:H2'	2:B:115:G:O4'	2.17	0.45
3:C:-5:DT:H2'	3:C:-4:DT:C6	2.52	0.45
4:D:0:DT:H2''	4:D:1:DG:C5	2.51	0.45
1:A:417:ALA:O	1:A:421:ARG:HG3	2.17	0.45
2:B:155:A:H2'	2:B:156:U:H6	1.80	0.45
2:B:69:U:H2'	2:B:70:G:C8	2.52	0.45
2:B:81:G:H2'	2:B:82:U:H6	1.81	0.45
2:B:96:C:H2'	2:B:97:C:H6	1.82	0.44
2:B:13:C:H2'	2:B:14:C:H6	1.82	0.44
2:B:113:C:H2'	2:B:114:U:H6	1.82	0.44
2:B:187:C:H2'	2:B:188:U:O4'	2.17	0.44
2:B:46:U:H2'	2:B:47:G:C8	2.53	0.44
1:A:446:HIS:CD2	1:A:446:HIS:H	2.35	0.44
1:A:384:GLU:O	1:A:387:THR:OG1	2.28	0.44
1:A:421:ARG:NH2	4:D:-2:DG:H21	2.15	0.44
2:B:22:A:H4'	2:B:23:U:OP1	2.17	0.44
2:B:172:C:H2'	2:B:173:U:C6	2.52	0.44
4:D:-1:DT:H2''	4:D:0:DT:C6	2.53	0.44

Continued on next page...

Continued from previous page...

Atom-1	Atom-2	Interatomic distance (Å)	Clash overlap (Å)
1:A:451:VAL:HB	1:A:545:LEU:HD23	2.00	0.44
2:B:73:U:O2'	2:B:76:A:N6	2.48	0.44
3:C:-7:DA:H2'	3:C:-6:DC:C6	2.53	0.44
1:A:26:ASP:OD1	1:A:26:ASP:N	2.50	0.44
1:A:85:HIS:CE1	1:A:286:GLU:HG3	2.53	0.44
1:A:454:GLY:O	1:A:590:TYR:OH	2.27	0.44
1:A:591:GLY:HA3	3:C:-6:DC:OP1	2.18	0.44
2:B:9:A:N1	2:B:148:C:O2'	2.48	0.44
2:B:10:G:H2'	2:B:11:C:C6	2.52	0.44
2:B:22:A:C2	2:B:40:G:C2	3.05	0.44
2:B:97:C:H4'	2:B:189:G:H21	1.83	0.44
1:A:402:ILE:CG1	1:A:405:MET:HE3	2.41	0.43
2:B:8:U:H5''	2:B:9:A:H8	1.84	0.43
2:B:155:A:H2'	2:B:156:U:C6	2.53	0.43
2:B:219:A:C6	2:B:221:G:C4	3.06	0.43
2:B:221:G:H2'	2:B:222:G:H8	1.83	0.43
1:A:62:LEU:O	1:A:65:PRO:HD2	2.19	0.43
1:A:285:PHE:CD2	1:A:285:PHE:N	2.86	0.43
1:A:388:GLU:OE1	1:A:391:ARG:NH2	2.48	0.43
1:A:36:LEU:O	1:A:39:LEU:CD1	2.66	0.43
1:A:78:ARG:HA	1:A:81:MET:SD	2.57	0.43
2:B:10:G:H2'	2:B:11:C:H6	1.83	0.43
1:A:39:LEU:HD12	1:A:40:GLY:H	1.78	0.43
1:A:331:ASP:HB3	1:A:347:PHE:CD1	2.43	0.43
1:A:631:TYR:CZ	1:A:635:LEU:HD21	2.54	0.43
2:B:123:U:H2'	2:B:124:G:H8	1.83	0.43
2:B:123:U:H2'	2:B:124:G:C8	2.53	0.43
1:A:455:LEU:N	1:A:558:GLU:OE2	2.50	0.43
1:A:479:GLN:OE1	2:B:23:U:H5	2.02	0.43
2:B:196:C:C2	2:B:210:G:C2	3.06	0.43
1:A:343:SER:N	1:A:428:ARG:HB3	2.34	0.43
1:A:324:TRP:CE3	1:A:377:VAL:HG21	2.54	0.42
1:A:508:ASN:OD1	1:A:508:ASN:N	2.52	0.42
2:B:66:G:H2'	2:B:67:A:C8	2.54	0.42
1:A:346:LEU:HB2	1:A:433:PHE:HE1	1.84	0.42
1:A:35:LEU:HD11	1:A:59:VAL:HG13	2.01	0.42
1:A:550:ASP:O	1:A:551:MET:HE2	2.20	0.42
2:B:22:A:C4	2:B:24:G:C8	3.08	0.42
2:B:70:G:C6	2:B:80:A:C6	3.08	0.42
2:B:112:C:C2	2:B:161:G:C2	3.08	0.42
3:C:-1:DC:H4'	3:C:0:DA:OP2	2.20	0.42

Continued on next page...

Continued from previous page...

Atom-1	Atom-2	Interatomic distance (Å)	Clash overlap (Å)
2:B:94:A:H2'	2:B:95:C:C6	2.55	0.42
1:A:350:ARG:NH2	3:C:0:DA:OP1	2.52	0.42
2:B:52:A:C2	2:B:53:U:C4	3.08	0.42
1:A:441:TYR:OH	1:A:536:ARG:HA	2.20	0.42
2:B:92:U:C2	2:B:93:G:C8	3.08	0.42
2:B:25:C:H2'	2:B:26:U:H6	1.85	0.41
1:A:296:ASN:OD1	1:A:297:GLN:N	2.52	0.41
2:B:80:A:C2	2:B:81:G:C5	3.07	0.41
2:B:37:U:H2'	2:B:38:C:H6	1.85	0.41
1:A:548:LEU:HD11	1:A:591:GLY:HA2	2.02	0.41
1:A:577:TYR:OH	2:B:12:G:OP1	2.28	0.41
1:A:500:HIS:ND1	2:B:117:U:O2	2.35	0.41
2:B:13:C:H2'	2:B:14:C:C6	2.56	0.41
2:B:18:A:H2'	2:B:19:U:H6	1.82	0.41
2:B:33:A:H2'	2:B:34:G:H8	1.85	0.41
3:C:-4:DT:H2'	3:C:-3:DC:H6	1.84	0.41
1:A:532:VAL:HG21	1:A:600:LYS:HB3	2.02	0.41
1:A:600:LYS:HA	1:A:600:LYS:HD2	1.86	0.41
2:B:106:G:H2'	2:B:107:C:H6	1.86	0.41
4:D:-7:DA:H8	4:D:-7:DA:OP2	2.04	0.41
1:A:31:LEU:O	1:A:31:LEU:HD12	2.21	0.41
1:A:527:LEU:HD12	1:A:527:LEU:HA	1.71	0.41
2:B:236:G:H2'	2:B:237:U:C6	2.55	0.41
4:D:-7:DA:H2''	4:D:-6:DG:O5'	2.20	0.41
1:A:344:SER:HA	1:A:347:PHE:HE2	1.84	0.41
1:A:351:ASN:OD1	1:A:376:CYS:HB3	2.21	0.41
2:B:43:U:O2'	2:B:44:U:H5'	2.20	0.41
2:B:72:A:N6	2:B:73:U:O2	2.53	0.41
1:A:339:LYS:NZ	1:A:340:ASN:OD1	2.44	0.40
2:B:28:C:H1'	2:B:29:U:C5	2.56	0.40
4:D:-3:DG:C2	4:D:-2:DG:C5	3.09	0.40
1:A:58:VAL:HA	1:A:61:GLN:NE2	2.36	0.40
1:A:325:PHE:HA	1:A:328:PHE:CD2	2.56	0.40
1:A:354:LEU:HD11	1:A:371:LEU:HD22	2.03	0.40
2:B:94:A:H2'	2:B:95:C:H6	1.86	0.40
4:D:-6:DG:C2	4:D:-5:DG:C5	3.09	0.40
1:A:326:GLN:O	1:A:330:GLU:HG2	2.22	0.40
1:A:405:MET:SD	1:A:405:MET:C	3.04	0.40
1:A:466:ALA:HB1	1:A:631:TYR:CD2	2.55	0.40
2:B:122:C:H2'	2:B:123:U:C6	2.56	0.40
2:B:235:A:H2'	2:B:236:G:C8	2.56	0.40

There are no symmetry-related clashes.

5.3 Torsion angles

5.3.1 Protein backbone

In the following table, the Percentiles column shows the percent Ramachandran outliers of the chain as a percentile score with respect to all PDB entries followed by that with respect to all EM entries.

The Analysed column shows the number of residues for which the backbone conformation was analysed, and the total number of residues.

Mol	Chain	Analysed	Favoured	Allowed	Outliers	Percentiles	
1	A	429/641 (67%)	415 (97%)	14 (3%)	0	100	100

There are no Ramachandran outliers to report.

5.3.2 Protein sidechains

In the following table, the Percentiles column shows the percent sidechain outliers of the chain as a percentile score with respect to all PDB entries followed by that with respect to all EM entries.

The Analysed column shows the number of residues for which the sidechain conformation was analysed, and the total number of residues.

Mol	Chain	Analysed	Rotameric	Outliers	Percentiles	
1	A	386/565 (68%)	375 (97%)	11 (3%)	38	67

All (11) residues with a non-rotameric sidechain are listed below:

Mol	Chain	Res	Type
1	A	29	THR
1	A	35	LEU
1	A	37	CYS
1	A	90	ILE
1	A	281	PHE
1	A	312	ILE
1	A	368	LEU
1	A	376	CYS
1	A	379	ASN
1	A	461	VAL
1	A	564	GLU

Sometimes sidechains can be flipped to improve hydrogen bonding and reduce clashes. All (8) such sidechains are listed below:

Mol	Chain	Res	Type
1	A	42	HIS
1	A	288	ASN
1	A	367	ASN
1	A	484	ASN
1	A	496	GLN
1	A	522	HIS
1	A	574	GLN
1	A	575	GLN

5.3.3 RNA ⓘ

Mol	Chain	Analysed	Backbone Outliers	Pucker Outliers
2	B	229/256 (89%)	65 (28%)	1 (0%)

All (65) RNA backbone outliers are listed below:

Mol	Chain	Res	Type
2	B	7	A
2	B	9	A
2	B	15	G
2	B	21	C
2	B	27	G
2	B	28	C
2	B	30	U
2	B	31	G
2	B	32	C
2	B	37	U
2	B	44	U
2	B	45	U
2	B	46	U
2	B	48	U
2	B	49	U
2	B	50	A
2	B	51	A
2	B	55	A
2	B	56	G
2	B	61	A
2	B	62	G
2	B	66	G
2	B	71	U

Continued on next page...

Continued from previous page...

Mol	Chain	Res	Type
2	B	72	A
2	B	73	U
2	B	74	A
2	B	75	A
2	B	78	A
2	B	81	G
2	B	86	G
2	B	99	G
2	B	102	A
2	B	103	G
2	B	104	C
2	B	108	U
2	B	116	A
2	B	117	U
2	B	118	G
2	B	127	A
2	B	129	U
2	B	130	A
2	B	131	G
2	B	132	A
2	B	135	G
2	B	137	A
2	B	138	U
2	B	140	G
2	B	155	A
2	B	173	U
2	B	178	U
2	B	179	A
2	B	193	C
2	B	201	A
2	B	204	A
2	B	205	A
2	B	213	C
2	B	217	A
2	B	218	A
2	B	219	A
2	B	220	U
2	B	221	G
2	B	223	G
2	B	226	G
2	B	227	A
2	B	232	A

All (1) RNA pucker outliers are listed below:

Mol	Chain	Res	Type
2	B	130	A

5.4 Non-standard residues in protein, DNA, RNA chains [i](#)

There are no non-standard protein/DNA/RNA residues in this entry.

5.5 Carbohydrates [i](#)

There are no oligosaccharides in this entry.

5.6 Ligand geometry [i](#)

There are no ligands in this entry.

5.7 Other polymers [i](#)

There are no such residues in this entry.

5.8 Polymer linkage issues [i](#)

There are no chain breaks in this entry.

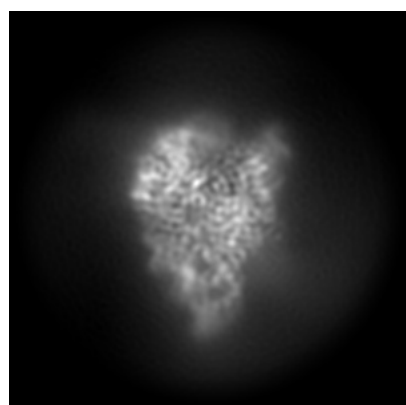
6 Map visualisation [i](#)

This section contains visualisations of the EMDB entry EMD-13486. These allow visual inspection of the internal detail of the map and identification of artifacts.

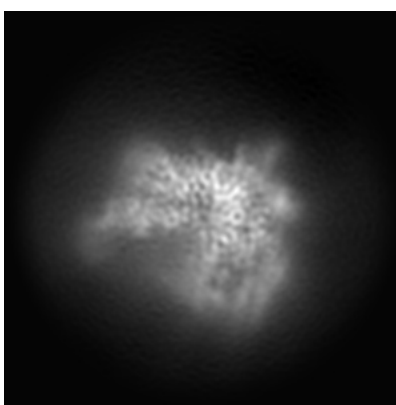
No raw map or half-maps were deposited for this entry and therefore no images, graphs, etc. pertaining to the raw map can be shown.

6.1 Orthogonal projections [i](#)

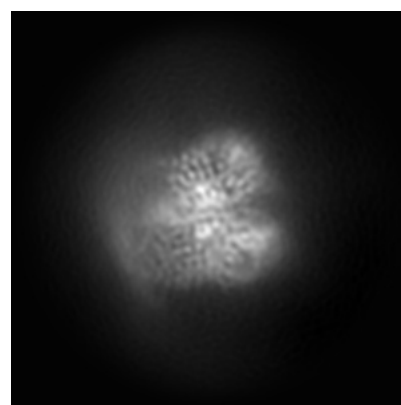
6.1.1 Primary map



X



Y

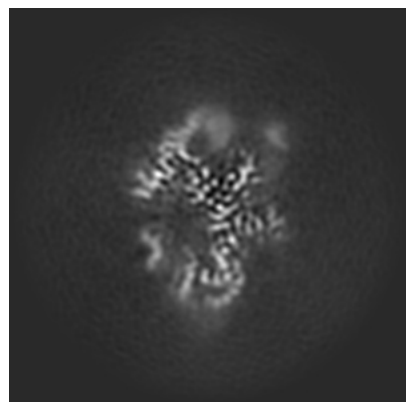


Z

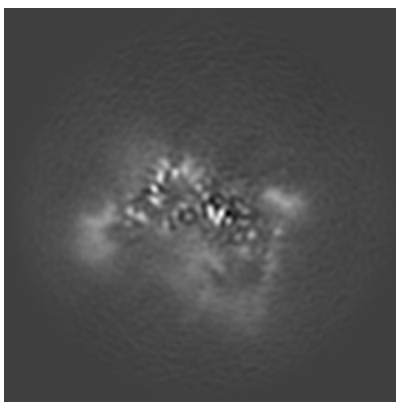
The images above show the map projected in three orthogonal directions.

6.2 Central slices [i](#)

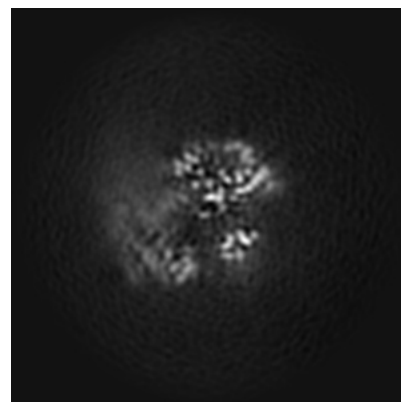
6.2.1 Primary map



X Index: 150



Y Index: 150

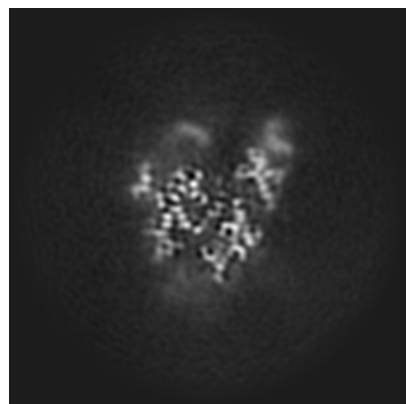


Z Index: 150

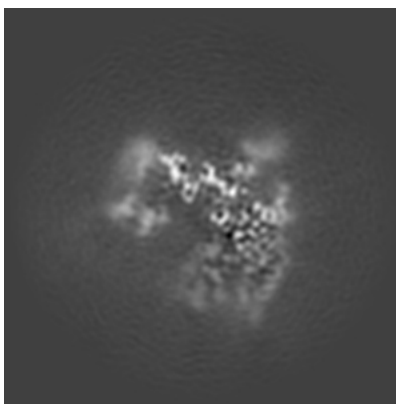
The images above show central slices of the map in three orthogonal directions.

6.3 Largest variance slices [i](#)

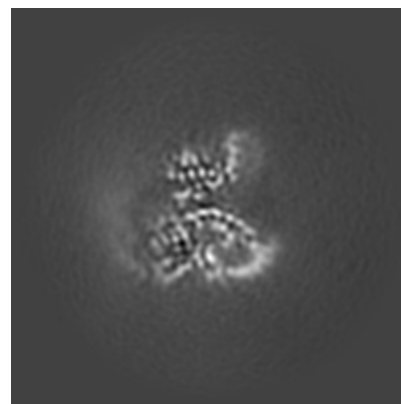
6.3.1 Primary map



X Index: 165



Y Index: 131

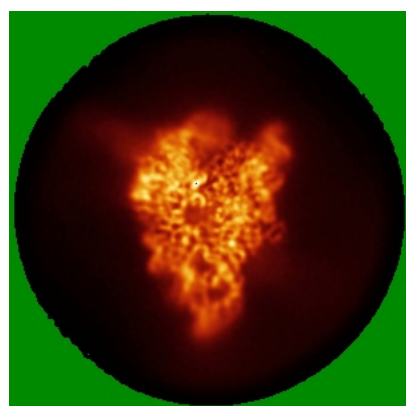


Z Index: 174

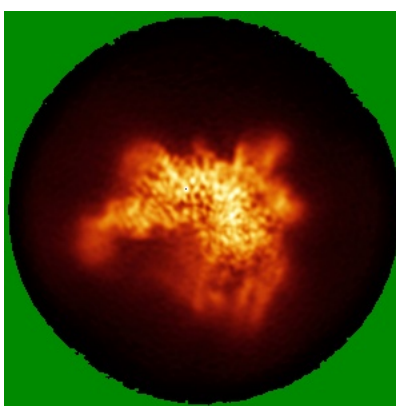
The images above show the largest variance slices of the map in three orthogonal directions.

6.4 Orthogonal standard-deviation projections (False-color) [i](#)

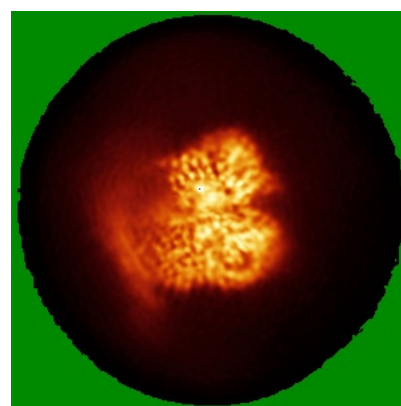
6.4.1 Primary map



X



Y

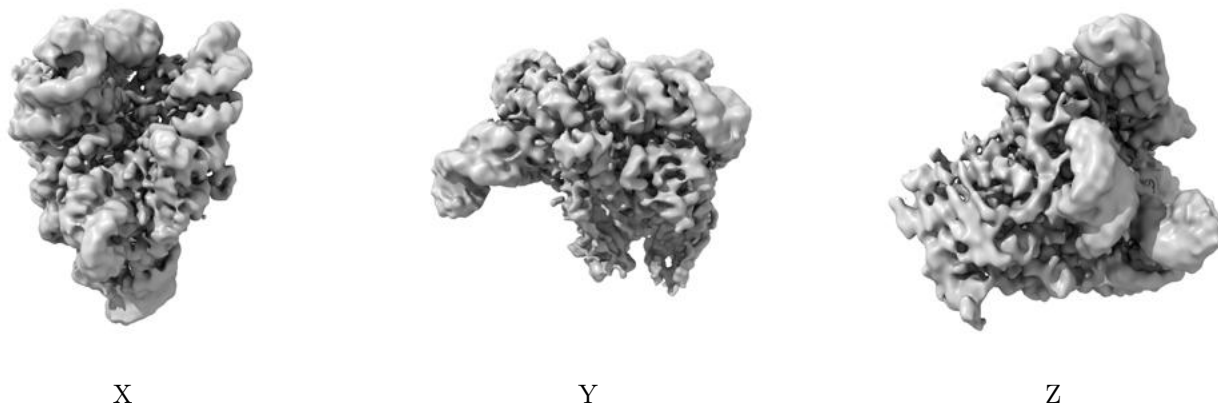


Z

The images above show the map standard deviation projections with false color in three orthogonal directions. Minimum values are shown in green, max in blue, and dark to light orange shades represent small to large values respectively.

6.5 Orthogonal surface views [i](#)

6.5.1 Primary map



The images above show the 3D surface view of the map at the recommended contour level 0.055. These images, in conjunction with the slice images, may facilitate assessment of whether an appropriate contour level has been provided.

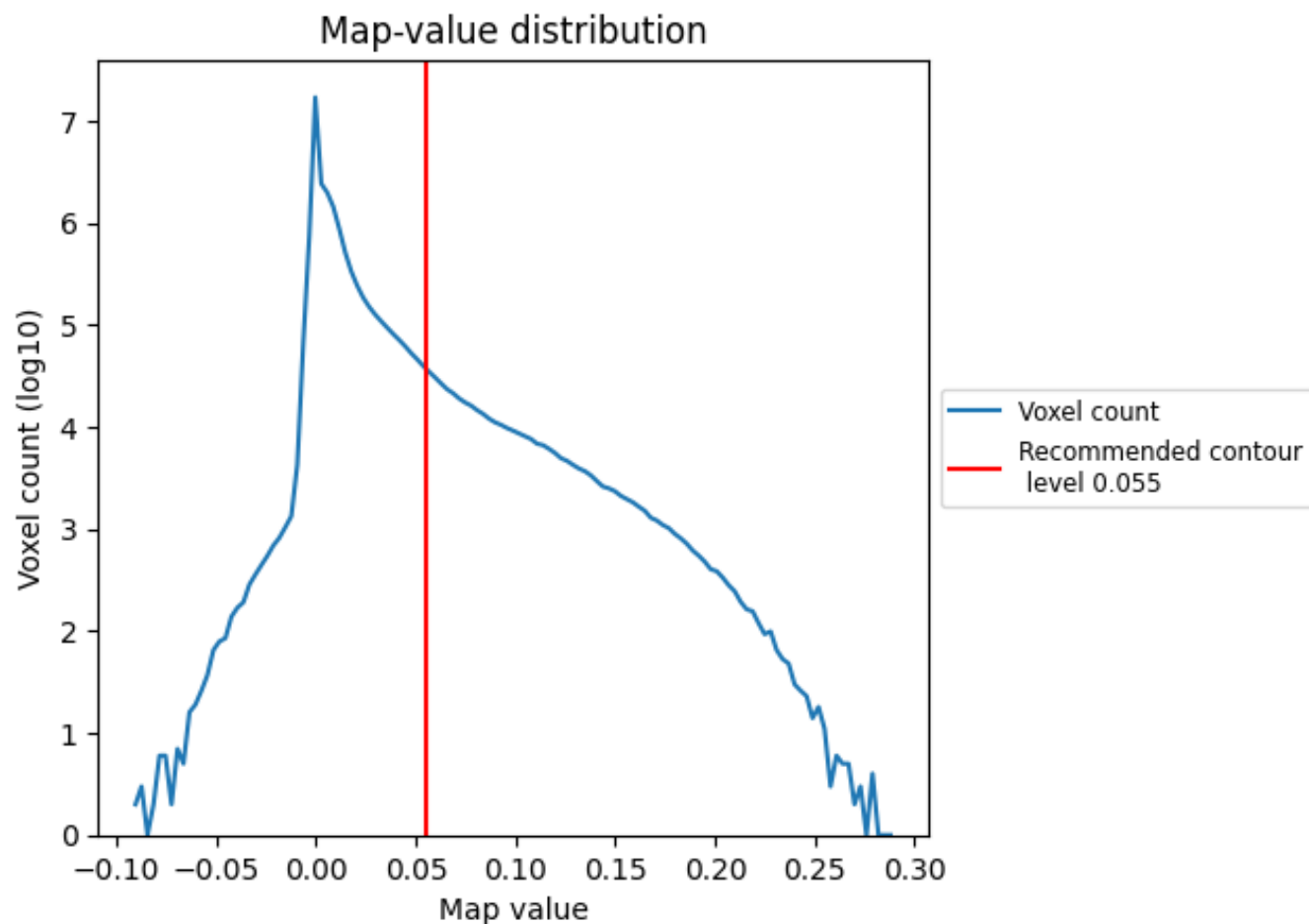
6.6 Mask visualisation [i](#)

This section was not generated. No masks/segmentation were deposited.

7 Map analysis [i](#)

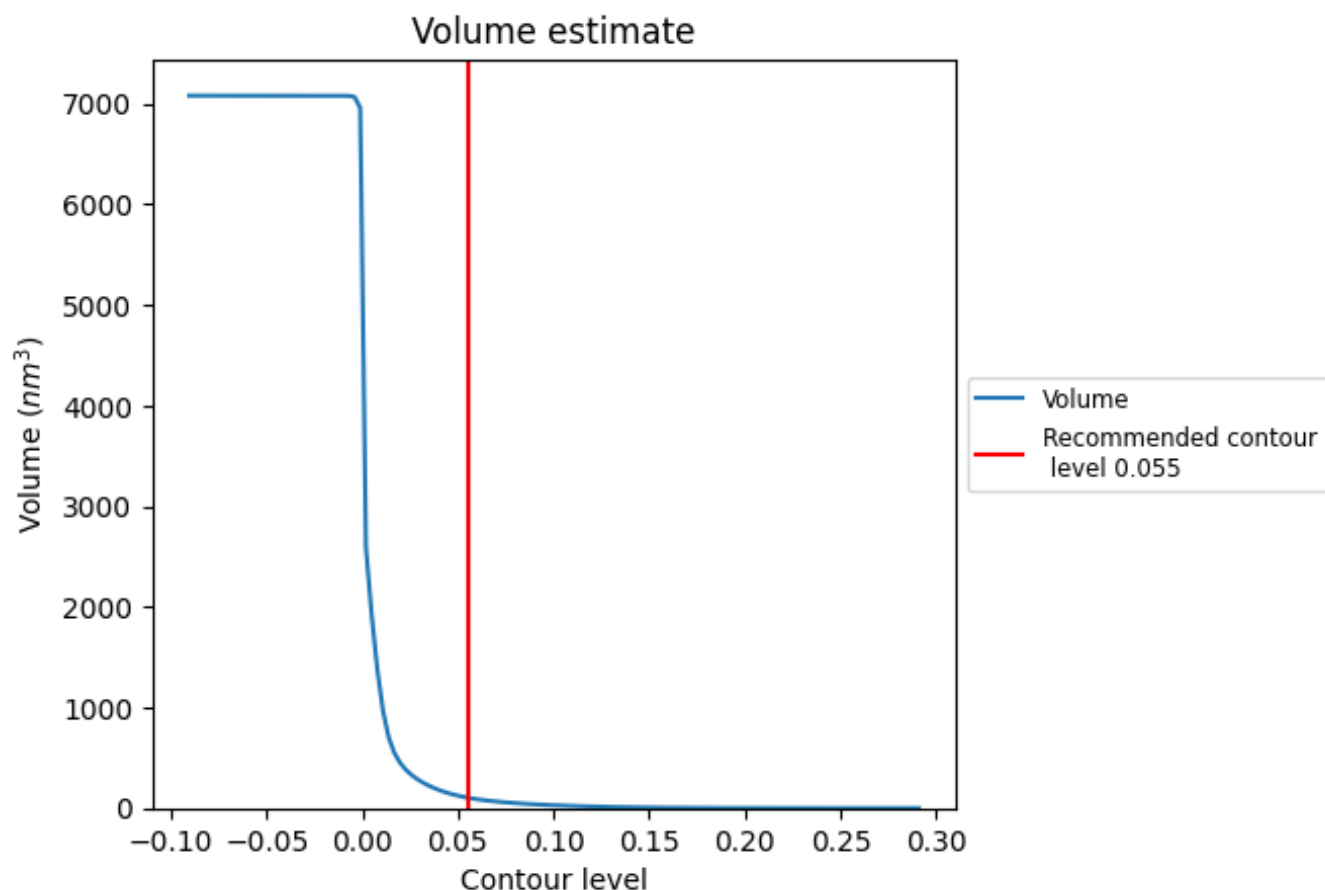
This section contains the results of statistical analysis of the map.

7.1 Map-value distribution [i](#)



The map-value distribution is plotted in 128 intervals along the x-axis. The y-axis is logarithmic. A spike in this graph at zero usually indicates that the volume has been masked.

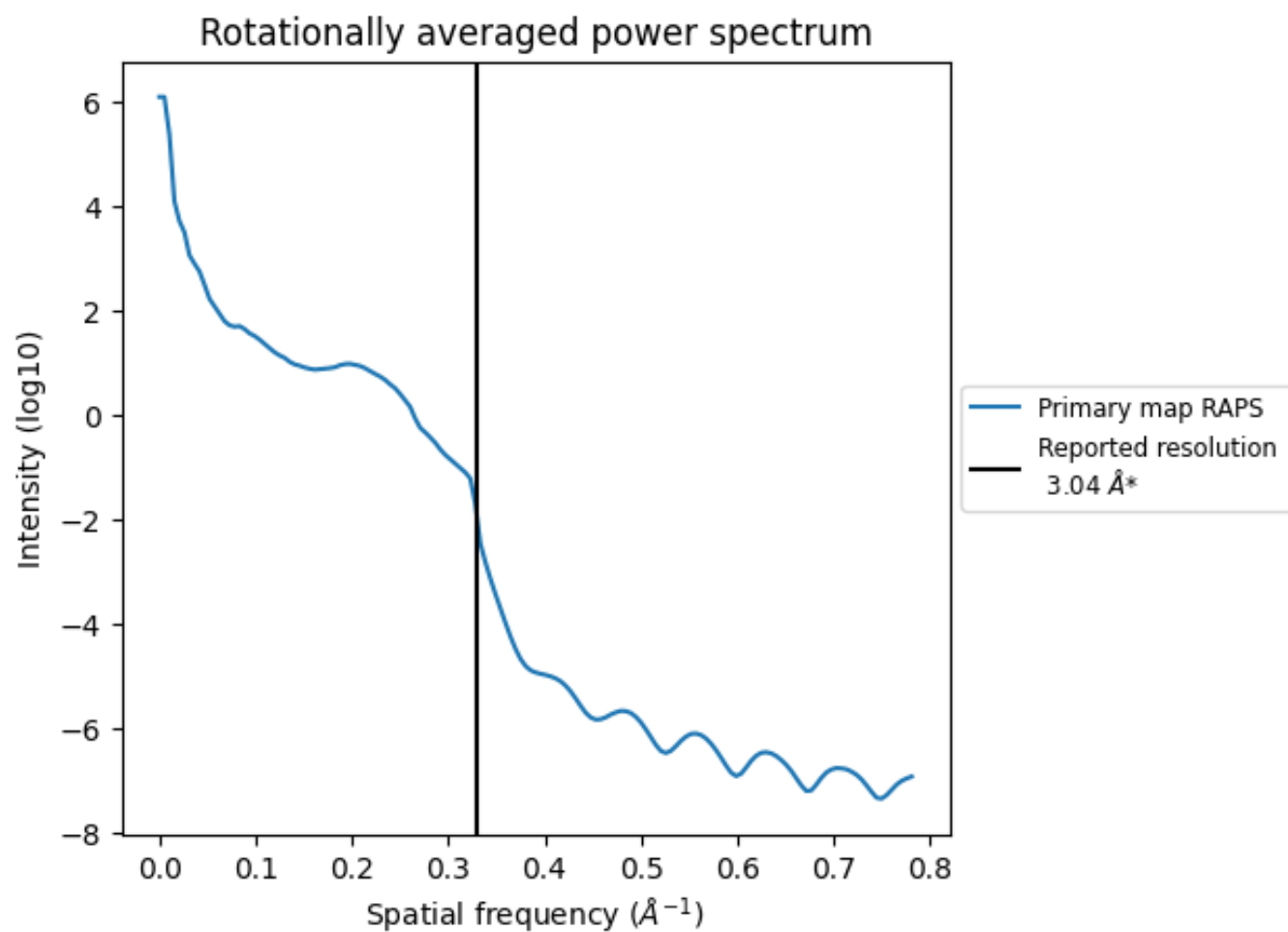
7.2 Volume estimate [i](#)



The volume at the recommended contour level is 104 nm³; this corresponds to an approximate mass of 94 kDa.

The volume estimate graph shows how the enclosed volume varies with the contour level. The recommended contour level is shown as a vertical line and the intersection between the line and the curve gives the volume of the enclosed surface at the given level.

7.3 Rotationally averaged power spectrum ⓘ



*Reported resolution corresponds to spatial frequency of 0.329 \AA^{-1}

8 Fourier-Shell correlation

This section was not generated. No FSC curve or half-maps provided.

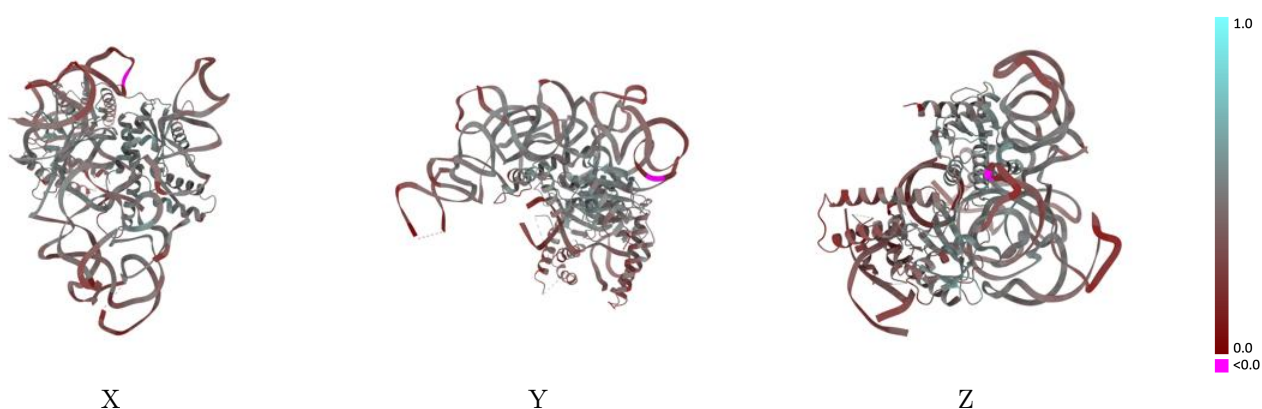
9 Map-model fit [i](#)

This section contains information regarding the fit between EMDB map EMD-13486 and PDB model 9GO0. Per-residue inclusion information can be found in section 3 on page 5.

9.1 Map-model overlay [i](#)

This section was not generated.

9.2 Q-score mapped to coordinate model [i](#)

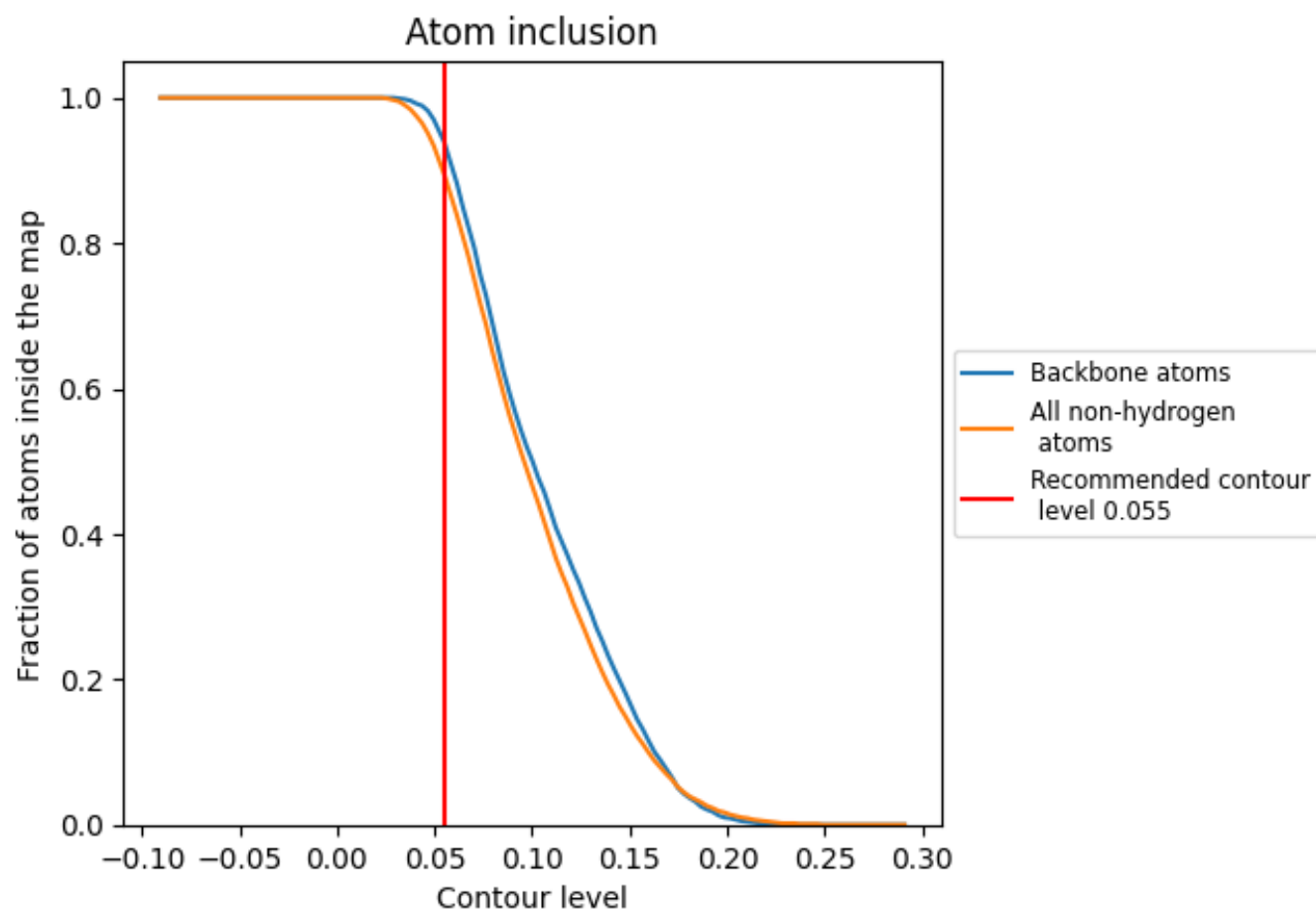


The images above show the model with each residue coloured according its Q-score. This shows their resolvability in the map with higher Q-score values reflecting better resolvability. Please note: Q-score is calculating the resolvability of atoms, and thus high values are only expected at resolutions at which atoms can be resolved. Low Q-score values may therefore be expected for many entries.

9.3 Atom inclusion mapped to coordinate model [i](#)

This section was not generated.

9.4 Atom inclusion [i](#)



At the recommended contour level, 94% of all backbone atoms, 89% of all non-hydrogen atoms, are inside the map.

9.5 Map-model fit summary ⓘ

The table lists the average atom inclusion at the recommended contour level (0.055) and Q-score for the entire model and for each chain.

Chain	Atom inclusion	Q-score
All	<div></div> 0.8940	<div></div> 0.4070
A	<div></div> 0.8030	<div></div> 0.4360
B	<div></div> 0.9740	<div></div> 0.3980
C	<div></div> 0.7670	<div></div> 0.3030
D	<div></div> 0.7460	<div></div> 0.3020

