



# Full wwPDB X-ray Structure Validation Report ⓘ

Jun 18, 2024 – 02:51 PM EDT

PDB ID : 4FSF  
Title : Crystal structure of Pseudomonas aeruginosa PBP3 complexed with compound 14  
Authors : Han, S.  
Deposited on : 2012-06-27  
Resolution : 2.20 Å(reported)

This is a Full wwPDB X-ray Structure Validation Report for a publicly released PDB entry.

We welcome your comments at [validation@mail.wwpdb.org](mailto:validation@mail.wwpdb.org)

A user guide is available at

<https://www.wwpdb.org/validation/2017/XrayValidationReportHelp>

with specific help available everywhere you see the ⓘ symbol.

The types of validation reports are described at

<http://www.wwpdb.org/validation/2017/FAQs#types>.

---

The following versions of software and data (see [references ⓘ](#)) were used in the production of this report:

MolProbity : 4.02b-467  
Mogul : 2022.3.0, CSD as543be (2022)  
Xtriage (Phenix) : 1.20.1  
EDS : 2.37.1  
buster-report : 1.1.7 (2018)  
Percentile statistics : 20191225.v01 (using entries in the PDB archive December 25th 2019)  
Refmac : 5.8.0158  
CCP4 : 7.0.044 (Gargrove)  
Ideal geometry (proteins) : Engh & Huber (2001)  
Ideal geometry (DNA, RNA) : Parkinson et al. (1996)  
Validation Pipeline (wwPDB-VP) : 2.37.1

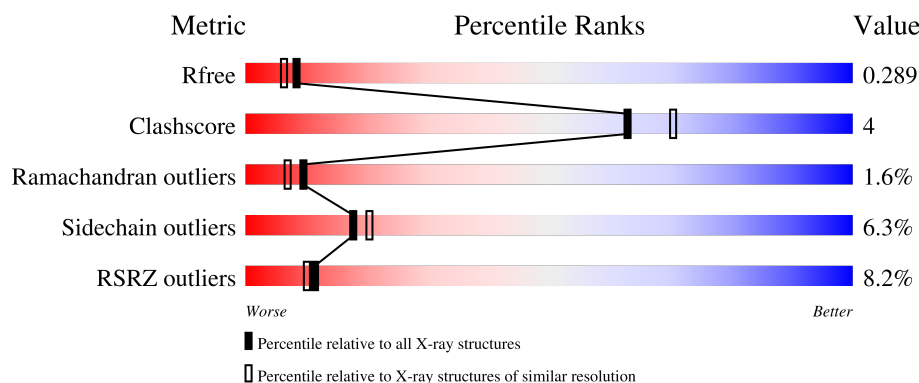
# 1 Overall quality at a glance

The following experimental techniques were used to determine the structure:

*X-RAY DIFFRACTION*

The reported resolution of this entry is 2.20 Å.

Percentile scores (ranging between 0-100) for global validation metrics of the entry are shown in the following graphic. The table shows the number of entries on which the scores are based.



Metric	Whole archive (#Entries)	Similar resolution (#Entries, resolution range(Å))
$R_{free}$	130704	4898 (2.20-2.20)
Clashscore	141614	5594 (2.20-2.20)
Ramachandran outliers	138981	5503 (2.20-2.20)
Sidechain outliers	138945	5504 (2.20-2.20)
RSRZ outliers	127900	4800 (2.20-2.20)

The table below summarises the geometric issues observed across the polymeric chains and their fit to the electron density. The red, orange, yellow and green segments of the lower bar indicate the fraction of residues that contain outliers for  $\geq 3$ , 2, 1 and 0 types of geometric quality criteria respectively. A grey segment represents the fraction of residues that are not modelled. The numeric value for each fraction is indicated below the corresponding segment, with a dot representing fractions  $\leq 5\%$ . The upper red bar (where present) indicates the fraction of residues that have poor fit to the electron density. The numeric value is given above the bar.

Mol	Chain	Length	Quality of chain
1	A	536	

## 2 Entry composition [i](#)

There are 3 unique types of molecules in this entry. The entry contains 4056 atoms, of which 0 are hydrogens and 0 are deuteriums.

In the tables below, the ZeroOcc column contains the number of atoms modelled with zero occupancy, the AltConf column contains the number of residues with at least one atom in alternate conformation and the Trace column contains the number of residues modelled with at most 2 atoms.

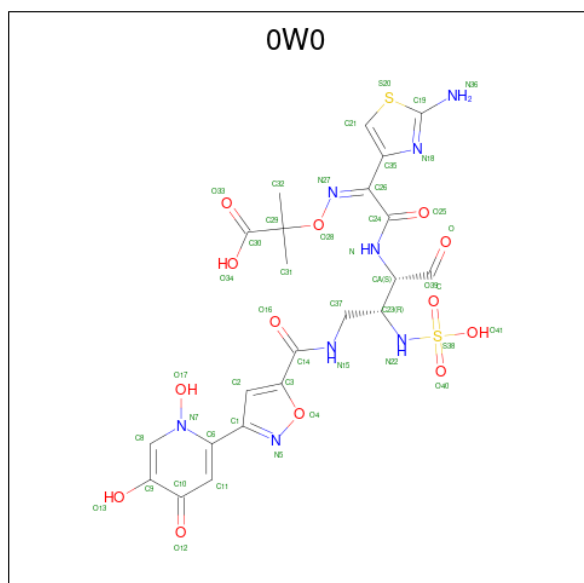
- Molecule 1 is a protein called Penicillin-binding protein 3.

Mol	Chain	Residues	Atoms					ZeroOcc	AltConf	Trace
			Total	C	N	O	S			
1	A	501	3822	2414	692	704	12	0	0	0

There are 6 discrepancies between the modelled and reference sequences:

Chain	Residue	Modelled	Actual	Comment	Reference
A	44	HIS	-	EXPRESSION TAG	UNP Q02H22
A	45	HIS	-	EXPRESSION TAG	UNP Q02H22
A	46	HIS	-	EXPRESSION TAG	UNP Q02H22
A	47	HIS	-	EXPRESSION TAG	UNP Q02H22
A	48	HIS	-	EXPRESSION TAG	UNP Q02H22
A	49	HIS	-	EXPRESSION TAG	UNP Q02H22

- Molecule 2 is (4R,5S,8Z)-8-(2-amino-1,3-thiazol-4-yl)-1-[3-(1,5-dihydroxy-4-oxo-1,4-dihydro pyridin-2-yl)-1,2-oxazol-5-yl]-5-formyl-11,11-dimethyl-1,7-dioxo-4-(sulfoamino)-10-oxa-2,6,9-triazadodec-8-en-12-oic acid (three-letter code: 0W0) (formula: C<sub>22</sub>H<sub>24</sub>N<sub>8</sub>O<sub>13</sub>S<sub>2</sub>).



Mol	Chain	Residues	Atoms					ZeroOcc	AltConf
2	A	1	Total	C	N	O	S	0	0
			45	22	8	13	2		

- Molecule 3 is water.

Mol	Chain	Residues	Atoms		ZeroOcc	AltConf
3	A	189	Total	O	0	0
			189	189		

i

- Molecule 1: Penicillin-binding protein 3



## 4 Data and refinement statistics

Property	Value	Source
Space group	P 21 21 21	Depositor
Cell constants a, b, c, $\alpha$ , $\beta$ , $\gamma$	67.64Å 82.72Å 88.75Å 90.00° 90.00° 90.00°	Depositor
Resolution (Å)	25.11 – 2.20 25.11 – 2.20	Depositor EDS
% Data completeness (in resolution range)	96.4 (25.11-2.20) 96.4 (25.11-2.20)	Depositor EDS
$R_{merge}$	(Not available)	Depositor
$R_{sym}$	(Not available)	Depositor
$\langle I/\sigma(I) \rangle$ <sup>1</sup>	1.19 (at 2.19Å)	Xtriage
Refinement program	BUSTER 2.11.2	Depositor
R, $R_{free}$	0.216 , 0.275 0.223 , 0.289	Depositor DCC
$R_{free}$ test set	1286 reflections (5.15%)	wwPDB-VP
Wilson B-factor (Å <sup>2</sup> )	35.0	Xtriage
Anisotropy	0.080	Xtriage
Bulk solvent $k_{sol}$ (e/Å <sup>3</sup> ), $B_{sol}$ (Å <sup>2</sup> )	0.31 , 59.2	EDS
L-test for twinning <sup>2</sup>	$\langle  L  \rangle = 0.43$ , $\langle L^2 \rangle = 0.26$	Xtriage
Estimated twinning fraction	No twinning to report.	Xtriage
$F_o, F_c$ correlation	0.94	EDS
Total number of atoms	4056	wwPDB-VP
Average B, all atoms (Å <sup>2</sup> )	49.0	wwPDB-VP

Xtriage's analysis on translational NCS is as follows: *The largest off-origin peak in the Patterson function is 5.83% of the height of the origin peak. No significant pseudotranslation is detected.*

<sup>1</sup>Intensities estimated from amplitudes.

<sup>2</sup>Theoretical values of  $\langle |L| \rangle$ ,  $\langle L^2 \rangle$  for acentric reflections are 0.5, 0.333 respectively for untwinned datasets, and 0.375, 0.2 for perfectly twinned datasets.

## 5 Model quality

### 5.1 Standard geometry

Bond lengths and bond angles in the following residue types are not validated in this section: 0W0

The Z score for a bond length (or angle) is the number of standard deviations the observed value is removed from the expected value. A bond length (or angle) with  $|Z| > 5$  is considered an outlier worth inspection. RMSZ is the root-mean-square of all Z scores of the bond lengths (or angles).

Mol	Chain	Bond lengths		Bond angles	
		RMSZ	$\# Z  > 5$	RMSZ	$\# Z  > 5$
1	A	0.51	0/3897	0.72	0/5288

There are no bond length outliers.

There are no bond angle outliers.

There are no chirality outliers.

There are no planarity outliers.

### 5.2 Too-close contacts

In the following table, the Non-H and H(model) columns list the number of non-hydrogen atoms and hydrogen atoms in the chain respectively. The H(added) column lists the number of hydrogen atoms added and optimized by MolProbity. The Clashes column lists the number of clashes within the asymmetric unit, whereas Symm-Clashes lists symmetry-related clashes.

Mol	Chain	Non-H	H(model)	H(added)	Clashes	Symm-Clashes
1	A	3822	0	3880	32	0
2	A	45	0	21	2	0
3	A	189	0	0	1	0
All	All	4056	0	3901	33	0

The all-atom clashscore is defined as the number of clashes found per 1000 atoms (including hydrogen atoms). The all-atom clashscore for this structure is 4.

All (33) close contacts within the same asymmetric unit are listed below, sorted by their clash magnitude.

Atom-1	Atom-2	Interatomic distance (Å)	Clash overlap (Å)
1:A:180:LEU:HD23	1:A:384:PRO:HB3	1.41	1.03

*Continued on next page...*

Continued from previous page...

Atom-1	Atom-2	Interatomic distance (Å)	Clash overlap (Å)
1:A:180:LEU:CD2	1:A:384:PRO:HB3	2.23	0.64
1:A:287:ILE:O	1:A:387:ARG:HD2	2.01	0.61
1:A:86:PRO:HG3	1:A:123:ILE:HG12	1.86	0.57
1:A:286:MET:HG2	1:A:416:ILE:HG13	1.87	0.57
1:A:264:ASN:HD21	1:A:285:ALA:H	1.53	0.55
1:A:80:THR:OG1	1:A:131:PRO:HA	2.07	0.55
1:A:79:VAL:HG23	1:A:150:GLU:HB3	1.89	0.54
1:A:129:LEU:HD13	1:A:133:GLN:HG3	1.90	0.52
1:A:180:LEU:HD23	1:A:384:PRO:CB	2.30	0.49
1:A:408:GLY:HA2	1:A:411:LEU:HD21	1.94	0.48
1:A:322:THR:HG22	1:A:331:ARG:HG2	1.97	0.47
1:A:531:GLY:HA3	1:A:536:LEU:HD23	1.96	0.47
1:A:84:ALA:O	1:A:86:PRO:HD3	2.16	0.46
1:A:178:ILE:HD11	1:A:436:MET:HB3	1.96	0.46
1:A:186:LEU:O	1:A:216:GLY:HA3	2.17	0.45
1:A:410:GLY:O	1:A:411:LEU:HB3	2.18	0.44
1:A:342:LEU:HA	1:A:345:ILE:HD12	2.00	0.43
1:A:321:GLY:HA3	1:A:335:ARG:HG2	1.99	0.42
1:A:505:SER:OG	1:A:534:GLY:HA2	2.18	0.42
1:A:298:PRO:HG3	1:A:461:LEU:HD21	2.01	0.42
1:A:264:ASN:ND2	1:A:285:ALA:H	2.18	0.42
1:A:83:TRP:CE2	1:A:146:TYR:HB2	2.55	0.41
1:A:262:MET:SD	1:A:416:ILE:HD11	2.61	0.41
1:A:294:SER:H	2:A:601:OW0:C	2.34	0.41
2:A:601:OW0:H5	3:A:714:HOH:O	2.20	0.41
1:A:155:TYR:OH	1:A:167:PHE:HA	2.20	0.41
1:A:293:GLY:O	1:A:296:VAL:HG22	2.21	0.41
1:A:315:ILE:HD12	1:A:339:GLN:HB3	2.02	0.41
1:A:55:HIS:CD2	1:A:195:VAL:H	2.39	0.40
1:A:314:ASP:O	1:A:341:ASP:HA	2.22	0.40
1:A:214:LYS:HE2	1:A:215:PRO:HD2	2.03	0.40
1:A:398:PRO:HD2	1:A:401:GLU:HB2	2.03	0.40

There are no symmetry-related clashes.

## 5.3 Torsion angles

### 5.3.1 Protein backbone

In the following table, the Percentiles column shows the percent Ramachandran outliers of the chain as a percentile score with respect to all X-ray entries followed by that with respect to entries

of similar resolution.

The Analysed column shows the number of residues for which the backbone conformation was analysed, and the total number of residues.

Mol	Chain	Analysed	Favoured	Allowed	Outliers	Percentiles
1	A	497/536 (93%)	472 (95%)	17 (3%)	8 (2%)	9 7

All (8) Ramachandran outliers are listed below:

Mol	Chain	Res	Type
1	A	54	ARG
1	A	199	ARG
1	A	276	LEU
1	A	201	GLY
1	A	210	THR
1	A	326	GLY
1	A	411	LEU
1	A	204	ILE

### 5.3.2 Protein sidechains ⓘ

In the following table, the Percentiles column shows the percent sidechain outliers of the chain as a percentile score with respect to all X-ray entries followed by that with respect to entries of similar resolution.

The Analysed column shows the number of residues for which the sidechain conformation was analysed, and the total number of residues.

Mol	Chain	Analysed	Rotameric	Outliers	Percentiles
1	A	399/425 (94%)	374 (94%)	25 (6%)	18 20

All (25) residues with a non-rotameric sidechain are listed below:

Mol	Chain	Res	Type
1	A	56	ILE
1	A	67	ASP
1	A	80	THR
1	A	89	LEU
1	A	108	LYS
1	A	130	THR
1	A	150	GLU
1	A	152	ARG
1	A	161	VAL

*Continued on next page...*

*Continued from previous page...*

Mol	Chain	Res	Type
1	A	167	PHE
1	A	170	VAL
1	A	175	ARG
1	A	176	GLU
1	A	198	ASP
1	A	217	LYS
1	A	239	LEU
1	A	274	ARG
1	A	364	GLU
1	A	387	ARG
1	A	396	LYS
1	A	401	GLU
1	A	455	SER
1	A	463	GLN
1	A	501	ASN
1	A	562	THR

Sometimes sidechains can be flipped to improve hydrogen bonding and reduce clashes. All (4) such sidechains are listed below:

Mol	Chain	Res	Type
1	A	194	GLN
1	A	237	ASN
1	A	264	ASN
1	A	283	ASN

### 5.3.3 RNA ⓘ

There are no RNA molecules in this entry.

## 5.4 Non-standard residues in protein, DNA, RNA chains ⓘ

There are no non-standard protein/DNA/RNA residues in this entry.

## 5.5 Carbohydrates ⓘ

There are no monosaccharides in this entry.

## 5.6 Ligand geometry

1 ligand is modelled in this entry.

In the following table, the Counts columns list the number of bonds (or angles) for which Mogul statistics could be retrieved, the number of bonds (or angles) that are observed in the model and the number of bonds (or angles) that are defined in the Chemical Component Dictionary. The Link column lists molecule types, if any, to which the group is linked. The Z score for a bond length (or angle) is the number of standard deviations the observed value is removed from the expected value. A bond length (or angle) with  $|Z| > 2$  is considered an outlier worth inspection. RMSZ is the root-mean-square of all Z scores of the bond lengths (or angles).

Mol	Type	Chain	Res	Link	Bond lengths			Bond angles		
					Counts	RMSZ	# $ Z  > 2$	Counts	RMSZ	# $ Z  > 2$
2	OW0	A	601	1	39,47,47	2.17	6 (15%)	40,69,69	1.63	11 (27%)

In the following table, the Chirals column lists the number of chiral outliers, the number of chiral centers analysed, the number of these observed in the model and the number defined in the Chemical Component Dictionary. Similar counts are reported in the Torsion and Rings columns. '-' means no outliers of that kind were identified.

Mol	Type	Chain	Res	Link	Chirals	Torsions	Rings
2	OW0	A	601	1	-	6/34/48/48	0/3/3/3

All (6) bond length outliers are listed below:

Mol	Chain	Res	Type	Atoms	Z	Observed(Å)	Ideal(Å)
2	A	601	OW0	S38-N22	9.75	1.71	1.59
2	A	601	OW0	C3-C14	-4.89	1.42	1.49
2	A	601	OW0	O39-S38	3.53	1.46	1.42
2	A	601	OW0	O40-S38	3.46	1.46	1.42
2	A	601	OW0	C35-C26	-2.46	1.44	1.47
2	A	601	OW0	C14-N15	2.30	1.38	1.33

All (11) bond angle outliers are listed below:

Mol	Chain	Res	Type	Atoms	Z	Observed(°)	Ideal(°)
2	A	601	OW0	O25-C24-N	3.29	128.90	123.09
2	A	601	OW0	O39-S38-O40	-3.11	113.44	120.36
2	A	601	OW0	C3-C14-N15	-2.96	111.44	115.56
2	A	601	OW0	O40-S38-N22	-2.61	104.51	108.88
2	A	601	OW0	C1-C6-C11	-2.42	115.72	124.64
2	A	601	OW0	C11-C6-N7	2.40	121.09	118.51
2	A	601	OW0	C-CA-N	-2.39	106.03	109.80

*Continued on next page...*

*Continued from previous page...*

Mol	Chain	Res	Type	Atoms	Z	Observed(°)	Ideal(°)
2	A	601	OW0	C29-O28-N27	2.18	112.27	110.35
2	A	601	OW0	O39-S38-N22	-2.18	105.24	108.88
2	A	601	OW0	C23-CA-N	2.12	113.86	109.81
2	A	601	OW0	O25-C24-C26	-2.08	118.10	120.45

There are no chirality outliers.

All (6) torsion outliers are listed below:

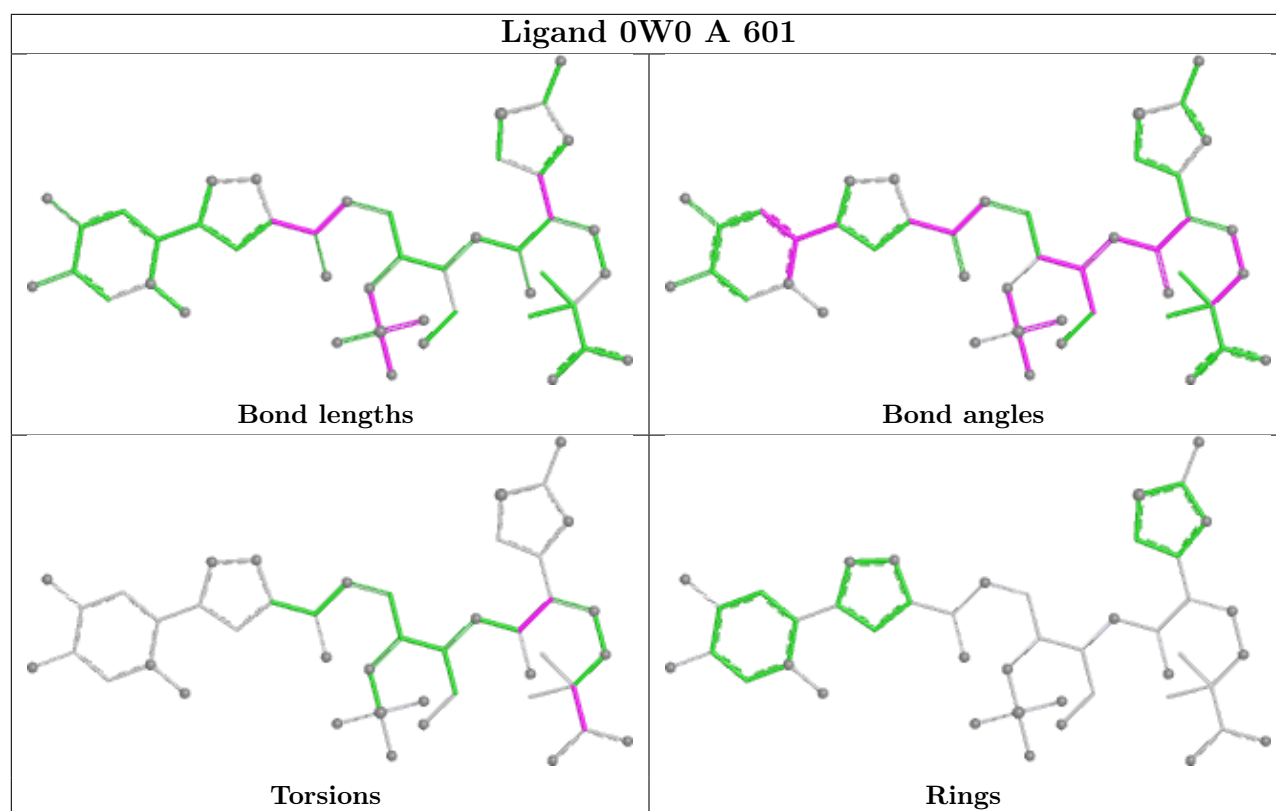
Mol	Chain	Res	Type	Atoms
2	A	601	OW0	C32-C29-C30-O34
2	A	601	OW0	O28-C29-C30-O34
2	A	601	OW0	C32-C29-C30-O33
2	A	601	OW0	O28-C29-C30-O33
2	A	601	OW0	N-C24-C26-N27
2	A	601	OW0	O25-C24-C26-N27

There are no ring outliers.

1 monomer is involved in 2 short contacts:

Mol	Chain	Res	Type	Clashes	Symm-Clashes
2	A	601	OW0	2	0

The following is a two-dimensional graphical depiction of Mogul quality analysis of bond lengths, bond angles, torsion angles, and ring geometry for all instances of the Ligand of Interest. In addition, ligands with molecular weight > 250 and outliers as shown on the validation Tables will also be included. For torsion angles, if less than 5% of the Mogul distribution of torsion angles is within 10 degrees of the torsion angle in question, then that torsion angle is considered an outlier. Any bond that is central to one or more torsion angles identified as an outlier by Mogul will be highlighted in the graph. For rings, the root-mean-square deviation (RMSD) between the ring in question and similar rings identified by Mogul is calculated over all ring torsion angles. If the average RMSD is greater than 60 degrees and the minimal RMSD between the ring in question and any Mogul-identified rings is also greater than 60 degrees, then that ring is considered an outlier. The outliers are highlighted in purple. The color gray indicates Mogul did not find sufficient equivalents in the CSD to analyse the geometry.



## 5.7 Other polymers [i](#)

There are no such residues in this entry.

## 5.8 Polymer linkage issues [i](#)

There are no chain breaks in this entry.

## 6 Fit of model and data ⓘ

### 6.1 Protein, DNA and RNA chains ⓘ

In the following table, the column labelled ‘#RSRZ> 2’ contains the number (and percentage) of RSRZ outliers, followed by percent RSRZ outliers for the chain as percentile scores relative to all X-ray entries and entries of similar resolution. The OWAB column contains the minimum, median, 95<sup>th</sup> percentile and maximum values of the occupancy-weighted average B-factor per residue. The column labelled ‘Q< 0.9’ lists the number of (and percentage) of residues with an average occupancy less than 0.9.

Mol	Chain	Analysed	<RSRZ>	#RSRZ>2	OWAB(Å <sup>2</sup> )	Q<0.9
1	A	501/536 (93%)	0.27	41 (8%) 11 10	23, 40, 96, 146	0

All (41) RSRZ outliers are listed below:

Mol	Chain	Res	Type	RSRZ
1	A	53	VAL	9.2
1	A	198	ASP	7.3
1	A	201	GLY	6.8
1	A	205	LYS	6.4
1	A	202	ARG	5.6
1	A	87	LYS	5.1
1	A	209	VAL	5.1
1	A	195	VAL	5.0
1	A	203	VAL	4.8
1	A	199	ARG	4.7
1	A	207	VAL	4.6
1	A	208	GLN	4.4
1	A	109	LEU	4.3
1	A	188	GLY	4.1
1	A	327	ARG	4.1
1	A	274	ARG	4.1
1	A	194	GLN	4.0
1	A	501	ASN	4.0
1	A	189	VAL	3.9
1	A	530	ALA	3.8
1	A	562	THR	3.8
1	A	57	ALA	3.7
1	A	134	GLY	3.7
1	A	130	THR	3.7
1	A	563	ALA	3.7
1	A	56	ILE	3.5
1	A	277	GLN	3.4

*Continued on next page...*

*Continued from previous page...*

Mol	Chain	Res	Type	RSRZ
1	A	133	GLN	3.2
1	A	54	ARG	3.2
1	A	192	LYS	3.1
1	A	229	TYR	3.0
1	A	200	ARG	2.9
1	A	275	ASN	2.6
1	A	502	ALA	2.6
1	A	122	PHE	2.5
1	A	211	LYS	2.4
1	A	273	ARG	2.3
1	A	522	VAL	2.3
1	A	196	LEU	2.2
1	A	214	LYS	2.2
1	A	276	LEU	2.1

## 6.2 Non-standard residues in protein, DNA, RNA chains [i](#)

There are no non-standard protein/DNA/RNA residues in this entry.

## 6.3 Carbohydrates [i](#)

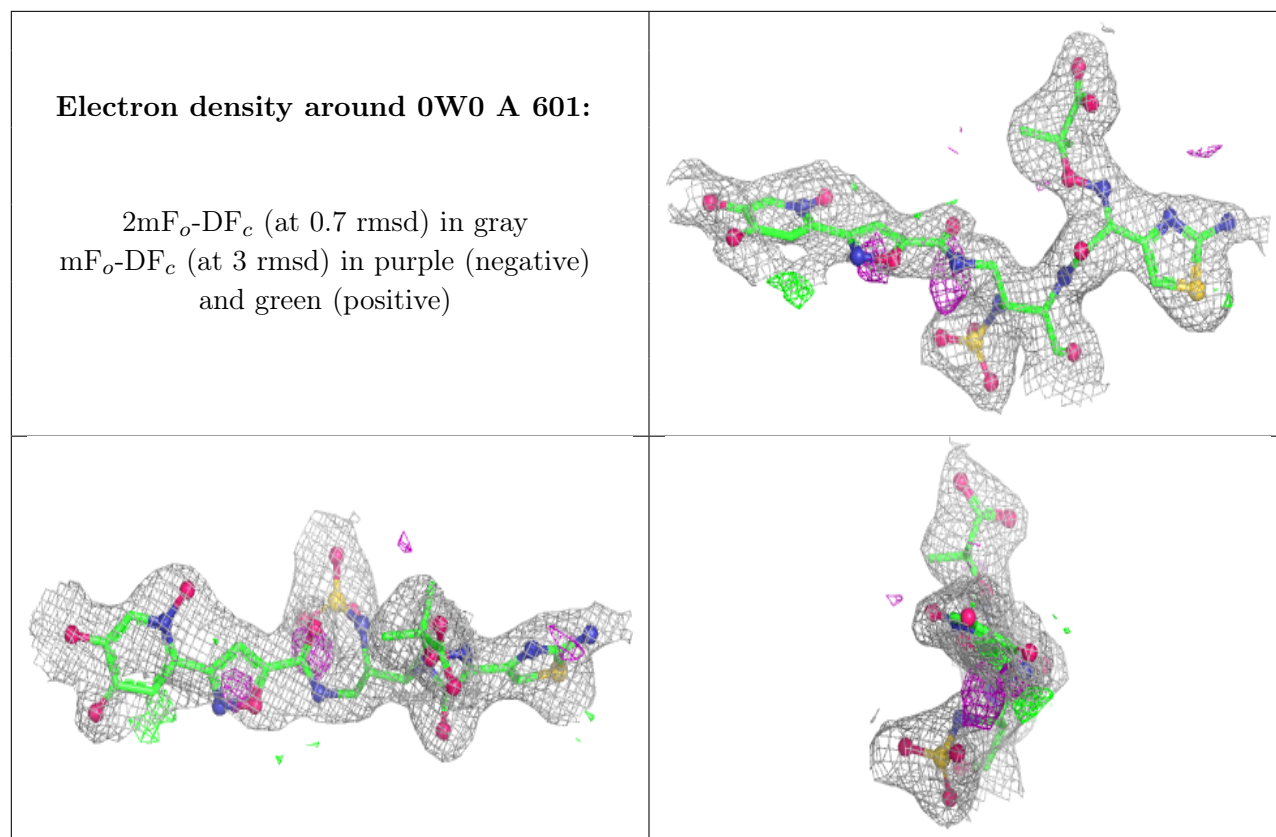
There are no monosaccharides in this entry.

## 6.4 Ligands [i](#)

In the following table, the Atoms column lists the number of modelled atoms in the group and the number defined in the chemical component dictionary. The B-factors column lists the minimum, median, 95<sup>th</sup> percentile and maximum values of B factors of atoms in the group. The column labelled 'Q<0.9' lists the number of atoms with occupancy less than 0.9.

Mol	Type	Chain	Res	Atoms	RSCC	RSR	B-factors( $\text{\AA}^2$ )	Q<0.9
2	0W0	A	601	45/45	0.92	0.17	29,44,76,79	0

The following is a graphical depiction of the model fit to experimental electron density of all instances of the Ligand of Interest. In addition, ligands with molecular weight > 250 and outliers as shown on the geometry validation Tables will also be included. Each fit is shown from different orientation to approximate a three-dimensional view.



## 6.5 Other polymers [i](#)

There are no such residues in this entry.