



Full wwPDB X-ray Structure Validation Report ⓘ

Mar 9, 2026 – 06:11 PM UTC

PDB ID : 9FR5 / pdb_00009fr5
Title : Crystal structure of human GSK3B in complex with ARN25697
Authors : Dalle Vedove, A.; Demuro, S.; Di Martino, R.M.C.; Balboni, B.; Tripathi, S.K.; Storici, P.; Girotto, S.; Cavalli, A.
Deposited on : 2024-06-18
Resolution : 2.30 Å(reported)

This is a Full wwPDB X-ray Structure Validation Report for a publicly released PDB entry.

We welcome your comments at validation@mail.wwpdb.org

A user guide is available at

<https://www.wwpdb.org/validation/2017/XrayValidationReportHelp>

with specific help available everywhere you see the ⓘ symbol.

The types of validation reports are described at

<http://www.wwpdb.org/validation/2017/FAQs#types>.

The following versions of software and data (see [references ⓘ](#)) were used in the production of this report:

MolProbity	:	4-5-2 with Phenix2.0
Mogul	:	2022.3.0, CSD as543be (2022)
Xtriage (Phenix)	:	2.0
EDS	:	3.0
Buster-report	:	wwPDB partial adaption of 1.1.7 (2018)
Percentile statistics	:	20250101.v01 (using entries in the PDB archive January 1st 2025)
CCP4	:	9.0.010 (Gargrove)
Density-Fitness	:	1.0.12
Ideal geometry (proteins)	:	Engh & Huber (2001)
Ideal geometry (DNA, RNA)	:	Parkinson et al. (1996)
Validation Pipeline (wwPDB-VP)	:	2.49

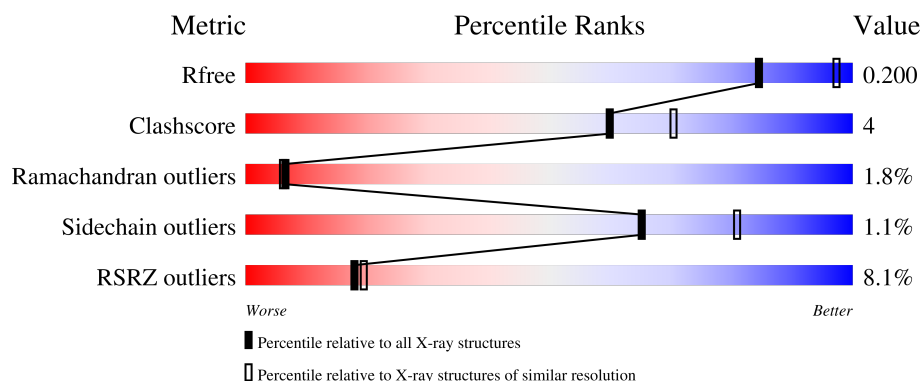
1 Overall quality at a glance

The following experimental techniques were used to determine the structure:

X-RAY DIFFRACTION


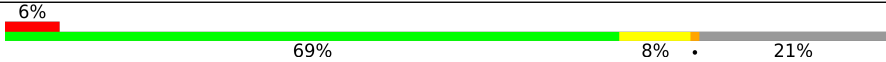
The reported resolution of this entry is 2.30 Å.

Percentile scores (ranging between 0-100) for global validation metrics of the entry are shown in the following graphic. The table shows the number of entries on which the scores are based.



Metric	Whole archive (#Entries)	Similar resolution (#Entries, resolution range(Å))
R_{free}	180053	6319 (2.30-2.30)
Clashscore	190562	6919 (2.30-2.30)
Ramachandran outliers	187476	6854 (2.30-2.30)
Sidechain outliers	187428	6854 (2.30-2.30)
RSRZ outliers	180081	6325 (2.30-2.30)

The table below summarises the geometric issues observed across the polymeric chains and their fit to the electron density. The red, orange, yellow and green segments of the lower bar indicate the fraction of residues that contain outliers for ≥ 3 , 2, 1 and 0 types of geometric quality criteria respectively. A grey segment represents the fraction of residues that are not modelled. The numeric value for each fraction is indicated below the corresponding segment, with a dot representing fractions $\leq 5\%$. The upper red bar (where present) indicates the fraction of residues that have poor fit to the electron density. The numeric value is given above the bar.

Mol	Chain	Length	Quality of chain
1	A	442	
1	B	442	

2 Entry composition

There are 3 unique types of molecules in this entry. The entry contains 6058 atoms, of which 0 are hydrogens and 0 are deuteriums.

In the tables below, the ZeroOcc column contains the number of atoms modelled with zero occupancy, the AltConf column contains the number of residues with at least one atom in alternate conformation and the Trace column contains the number of residues modelled with at most 2 atoms.

- Molecule 1 is a protein called Glycogen synthase kinase-3 beta.

Mol	Chain	Residues	Atoms					ZeroOcc	AltConf	Trace
1	A	361	Total	C	N	O	S	0	0	0
			2889	1853	498	526	12			
1	B	347	Total	C	N	O	S	0	0	0
			2779	1789	475	504	11			

There are 46 discrepancies between the modelled and reference sequences:

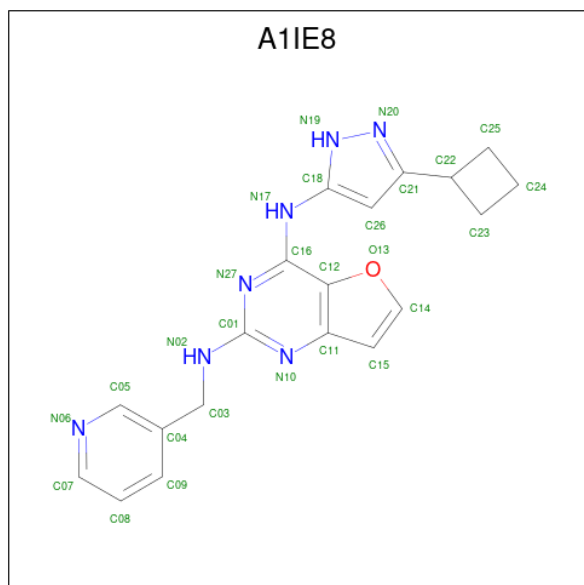
Chain	Residue	Modelled	Actual	Comment	Reference
A	-21	MET	-	initiating methionine	UNP P49841
A	-20	GLY	-	expression tag	UNP P49841
A	-19	HIS	-	expression tag	UNP P49841
A	-18	HIS	-	expression tag	UNP P49841
A	-17	HIS	-	expression tag	UNP P49841
A	-16	HIS	-	expression tag	UNP P49841
A	-15	HIS	-	expression tag	UNP P49841
A	-14	HIS	-	expression tag	UNP P49841
A	-13	SER	-	expression tag	UNP P49841
A	-12	SER	-	expression tag	UNP P49841
A	-11	GLY	-	expression tag	UNP P49841
A	-10	VAL	-	expression tag	UNP P49841
A	-9	ASP	-	expression tag	UNP P49841
A	-8	LEU	-	expression tag	UNP P49841
A	-7	GLY	-	expression tag	UNP P49841
A	-6	THR	-	expression tag	UNP P49841
A	-5	GLU	-	expression tag	UNP P49841
A	-4	ASN	-	expression tag	UNP P49841
A	-3	LEU	-	expression tag	UNP P49841
A	-2	TYR	-	expression tag	UNP P49841
A	-1	PHE	-	expression tag	UNP P49841
A	0	GLN	-	expression tag	UNP P49841
A	1	SER	-	expression tag	UNP P49841
B	-21	MET	-	initiating methionine	UNP P49841
B	-20	GLY	-	expression tag	UNP P49841

Continued on next page...

Continued from previous page...

Chain	Residue	Modelled	Actual	Comment	Reference
B	-19	HIS	-	expression tag	UNP P49841
B	-18	HIS	-	expression tag	UNP P49841
B	-17	HIS	-	expression tag	UNP P49841
B	-16	HIS	-	expression tag	UNP P49841
B	-15	HIS	-	expression tag	UNP P49841
B	-14	HIS	-	expression tag	UNP P49841
B	-13	SER	-	expression tag	UNP P49841
B	-12	SER	-	expression tag	UNP P49841
B	-11	GLY	-	expression tag	UNP P49841
B	-10	VAL	-	expression tag	UNP P49841
B	-9	ASP	-	expression tag	UNP P49841
B	-8	LEU	-	expression tag	UNP P49841
B	-7	GLY	-	expression tag	UNP P49841
B	-6	THR	-	expression tag	UNP P49841
B	-5	GLU	-	expression tag	UNP P49841
B	-4	ASN	-	expression tag	UNP P49841
B	-3	LEU	-	expression tag	UNP P49841
B	-2	TYR	-	expression tag	UNP P49841
B	-1	PHE	-	expression tag	UNP P49841
B	0	GLN	-	expression tag	UNP P49841
B	1	SER	-	expression tag	UNP P49841

- Molecule 2 is {N}4-(3-cyclobutyl-1 {H}-pyrazol-5-yl)- {N}2-(pyridin-3-ylmethyl)furo[3,2-d]pyrimidine-2,4-diamine (CCD ID: A1IE8) (formula: C₁₉H₁₉N₇O) (labeled as "Ligand of Interest" by depositor).



Mol	Chain	Residues	Atoms				ZeroOcc	AltConf
2	A	1	Total	C	N	O	0	0
			27	19	7	1		
2	B	1	Total	C	N	O	0	0
			27	19	7	1		

- Molecule 3 is water.

Mol	Chain	Residues	Atoms		ZeroOcc	AltConf
3	A	149	Total	O	0	0
			149	149		
3	B	187	Total	O	0	0
			187	187		

4 Data and refinement statistics

Property	Value	Source
Space group	P 21 21 21	Depositor
Cell constants a, b, c, α , β , γ	82.37Å 85.55Å 178.64Å 90.00° 90.00° 90.00°	Depositor
Resolution (Å)	61.78 – 2.30 61.78 – 2.30	Depositor EDS
% Data completeness (in resolution range)	99.8 (61.78-2.30) 100.0 (61.78-2.30)	Depositor EDS
R_{merge}	0.08	Depositor
R_{sym}	(Not available)	Depositor
$\langle I/\sigma(I) \rangle$ ¹	2.70 (at 2.08Å)	Xtriage
Refinement program	PHENIX (1.19.2_4158: ???)	Depositor
R, R_{free}	0.202 , 0.235 0.200 , 0.200	Depositor DCC
R_{free} test set	3735 reflections (4.94%)	wwPDB-VP
Wilson B-factor (Å ²)	44.9	Xtriage
Anisotropy	0.576	Xtriage
Bulk solvent k_{sol} (e/Å ³), B_{sol} (Å ²)	0.33 , 35.6	EDS
L-test for twinning ²	$\langle L \rangle = 0.50$, $\langle L^2 \rangle = 0.33$	Xtriage
Estimated twinning fraction	0.017 for k,h,-l	Xtriage
F_o, F_c correlation	0.95	EDS
Total number of atoms	6058	wwPDB-VP
Average B, all atoms (Å ²)	43.0	wwPDB-VP

Xtriage's analysis on translational NCS is as follows: *The largest off-origin peak in the Patterson function is 3.61% of the height of the origin peak. No significant pseudotranslation is detected.*

¹Intensities estimated from amplitudes.

²Theoretical values of $\langle |L| \rangle$, $\langle L^2 \rangle$ for acentric reflections are 0.5, 0.333 respectively for untwinned datasets, and 0.375, 0.2 for perfectly twinned datasets.

5 Model quality

5.1 Standard geometry

Bond lengths and bond angles in the following residue types are not validated in this section: A1IE8

The Z score for a bond length (or angle) is the number of standard deviations the observed value is removed from the expected value. A bond length (or angle) with $|Z| > 5$ is considered an outlier worth inspection. RMSZ is the root-mean-square of all Z scores of the bond lengths (or angles).

Mol	Chain	Bond lengths		Bond angles	
		RMSZ	# Z >5	RMSZ	# Z >5
1	A	0.12	0/2960	0.34	0/4022
1	B	0.12	0/2850	0.34	0/3878
All	All	0.12	0/5810	0.34	0/7900

There are no bond length outliers.

There are no bond angle outliers.

There are no chirality outliers.

There are no planarity outliers.

5.2 Too-close contacts

In the following table, the Non-H and H(model) columns list the number of non-hydrogen atoms and hydrogen atoms in the chain respectively. The H(added) column lists the number of hydrogen atoms added and optimized by MolProbity. The Clashes column lists the number of clashes within the asymmetric unit, whereas Symm-Clashes lists symmetry-related clashes.

Mol	Chain	Non-H	H(model)	H(added)	Clashes	Symm-Clashes
1	A	2889	0	2919	25	0
1	B	2779	0	2804	27	0
2	A	27	0	0	0	0
2	B	27	0	0	0	0
3	A	149	0	0	1	0
3	B	187	0	0	0	0
All	All	6058	0	5723	49	0

The all-atom clashscore is defined as the number of clashes found per 1000 atoms (including hydrogen atoms). The all-atom clashscore for this structure is 4.

All (49) close contacts within the same asymmetric unit are listed below, sorted by their clash

magnitude.

Atom-1	Atom-2	Interatomic distance (Å)	Clash overlap (Å)
1:B:119:SER:HB2	1:B:123:LYS:HZ1	1.56	0.70
1:A:291:PHE:HB2	1:B:214:VAL:HG11	1.76	0.66
1:A:180:ARG:HB3	1:A:217:ILE:HD13	1.77	0.65
1:A:293:PHE:O	1:A:295:GLN:NE2	2.30	0.65
1:B:122:LYS:O	1:B:124:ASP:N	2.28	0.64
1:B:144:ARG:HD3	1:B:148:ARG:CZ	2.27	0.64
1:B:180:ARG:HB3	1:B:217:ILE:HD13	1.81	0.63
1:A:214:VAL:HG11	1:B:291:PHE:HB2	1.81	0.62
1:A:266:LEU:O	1:A:270:ILE:HG12	2.01	0.60
1:B:120:GLY:O	1:B:121:GLU:HB2	2.03	0.58
1:A:94:LYS:NZ	3:A:606:HOH:O	2.37	0.57
1:A:122:LYS:O	1:A:124:ASP:N	2.35	0.55
1:A:65:GLY:O	1:A:67:PHE:N	2.40	0.55
1:A:220:ARG:HH11	1:A:220:ARG:HB3	1.71	0.54
1:B:266:LEU:O	1:B:270:ILE:HG12	2.09	0.52
1:A:220:ARG:HG3	1:A:265:GLN:NE2	2.26	0.51
1:B:122:LYS:HG3	1:B:123:LYS:H	1.76	0.50
1:A:35:SER:O	1:A:36:LYS:HB3	2.11	0.50
1:B:297:LYS:NZ	1:B:298:ALA:H	2.09	0.50
1:B:120:GLY:H	1:B:123:LYS:HZ1	1.59	0.50
1:A:97:GLU:HG3	1:A:201:PHE:C	2.37	0.49
1:A:217:ILE:HD12	1:A:218:CYS:HB2	1.94	0.49
1:B:157:TYR:OH	1:B:351:PRO:HG2	2.12	0.49
1:A:271:LYS:O	1:A:299:HIS:HB2	2.12	0.49
1:A:212:PRO:HG2	1:B:290:GLU:HG3	1.95	0.48
1:A:31:ASP:HB2	1:A:35:SER:OG	2.14	0.48
1:A:220:ARG:HB3	1:A:220:ARG:NH1	2.28	0.48
1:B:162:MET:HE2	1:B:247:LEU:HB2	1.96	0.47
1:B:297:LYS:HZ2	1:B:298:ALA:H	1.61	0.47
1:B:225:PRO:HB2	1:B:284:MET:SD	2.54	0.47
1:A:95:ASN:O	1:A:99:GLN:HG2	2.15	0.47
1:B:92:ARG:HG3	1:B:93:PHE:H	1.80	0.46
1:B:67:PHE:CD1	1:B:85:LYS:HE3	2.51	0.45
1:A:122:LYS:C	1:A:124:ASP:H	2.22	0.45
1:B:98:LEU:O	1:B:102:ARG:HG3	2.17	0.44
1:B:123:LYS:HE2	1:B:125:GLU:HG2	1.99	0.44
1:A:281:ILE:HD11	1:A:293:PHE:HE2	1.82	0.44
1:B:60:LYS:HB2	1:B:60:LYS:HE2	1.81	0.43
1:A:28:VAL:HG13	1:A:36:LYS:HE3	2.00	0.43
1:A:300:PRO:O	1:A:302:THR:N	2.52	0.43
1:A:208:VAL:HB	1:A:211:GLU:CD	2.43	0.43

Continued on next page...

Continued from previous page...

Atom-1	Atom-2	Interatomic distance (Å)	Clash overlap (Å)
1:B:225:PRO:HD3	1:B:241:TRP:CE2	2.55	0.42
1:B:120:GLY:H	1:B:123:LYS:NZ	2.16	0.41
1:A:349:LYS:NZ	1:A:355:ASP:OD1	2.44	0.41
1:B:80:GLU:OE2	1:B:113:ARG:NH2	2.53	0.41
1:B:217:ILE:H	1:B:217:ILE:HG13	1.75	0.41
1:B:65:GLY:C	1:B:67:PHE:H	2.29	0.41
1:A:57:THR:OG1	1:A:58:ASP:N	2.54	0.40
1:B:94:LYS:H	1:B:94:LYS:HG3	1.71	0.40

There are no symmetry-related clashes.

5.3 Torsion angles [i](#)

5.3.1 Protein backbone [i](#)

In the following table, the Percentiles column shows the percent Ramachandran outliers of the chain as a percentile score with respect to all X-ray entries followed by that with respect to entries of similar resolution.

The Analysed column shows the number of residues for which the backbone conformation was analysed, and the total number of residues.

Mol	Chain	Analysed	Favoured	Allowed	Outliers	Percentiles	
1	A	359/442 (81%)	334 (93%)	16 (4%)	9 (2%)	4	3
1	B	345/442 (78%)	325 (94%)	16 (5%)	4 (1%)	10	12
All	All	704/884 (80%)	659 (94%)	32 (4%)	13 (2%)	6	6

All (13) Ramachandran outliers are listed below:

Mol	Chain	Res	Type
1	A	66	SER
1	A	122	LYS
1	A	301	TRP
1	B	121	GLU
1	A	31	ASP
1	A	221	TYR
1	B	123	LYS
1	A	36	LYS
1	B	122	LYS
1	A	218	CYS

Continued on next page...

Continued from previous page...

Mol	Chain	Res	Type
1	B	120	GLY
1	A	120	GLY
1	A	300	PRO

5.3.2 Protein sidechains ⓘ

In the following table, the Percentiles column shows the percent sidechain outliers of the chain as a percentile score with respect to all X-ray entries followed by that with respect to entries of similar resolution.

The Analysed column shows the number of residues for which the sidechain conformation was analysed, and the total number of residues.

Mol	Chain	Analysed	Rotameric	Outliers	Percentiles	
1	A	322/383 (84%)	320 (99%)	2 (1%)	78	89
1	B	309/383 (81%)	304 (98%)	5 (2%)	55	73
All	All	631/766 (82%)	624 (99%)	7 (1%)	65	81

All (7) residues with a non-rotameric sidechain are listed below:

Mol	Chain	Res	Type
1	A	55	SER
1	A	60	LYS
1	B	132	LEU
1	B	152	THR
1	B	289	THR
1	B	317	CYS
1	B	364	THR

Sometimes sidechains can be flipped to improve hydrogen bonding and reduce clashes. All (8) such sidechains are listed below:

Mol	Chain	Res	Type
1	A	52	GLN
1	A	99	GLN
1	A	265	GLN
1	A	365	GLN
1	B	46	GLN
1	B	72	GLN
1	B	99	GLN
1	B	151	GLN

5.3.3 RNA ⓘ

There are no RNA molecules in this entry.

5.4 Non-standard residues in protein, DNA, RNA chains ⓘ

There are no non-standard protein/DNA/RNA residues in this entry.

5.5 Carbohydrates ⓘ

There are no oligosaccharides in this entry.

5.6 Ligand geometry ⓘ

2 ligands are modelled in this entry.

In the following table, the Counts columns list the number of bonds (or angles) for which Mogul statistics could be retrieved, the number of bonds (or angles) that are observed in the model and the number of bonds (or angles) that are defined in the Chemical Component Dictionary. The Link column lists molecule types, if any, to which the group is linked. The Z score for a bond length (or angle) is the number of standard deviations the observed value is removed from the expected value. A bond length (or angle) with $|Z| > 2$ is considered an outlier worth inspection. RMSZ is the root-mean-square of all Z scores of the bond lengths (or angles).

Mol	Type	Chain	Res	Link	Bond lengths			Bond angles		
					Counts	RMSZ	$\# Z > 2$	Counts	RMSZ	$\# Z > 2$
2	A1IE8	A	501	-	30,31,31	2.00	6 (20%)	30,43,43	2.66	8 (26%)
2	A1IE8	B	501	-	30,31,31	1.99	6 (20%)	30,43,43	2.64	8 (26%)

In the following table, the Chirals column lists the number of chiral outliers, the number of chiral centers analysed, the number of these observed in the model and the number defined in the Chemical Component Dictionary. Similar counts are reported in the Torsion and Rings columns. '-' means no outliers of that kind were identified.

Mol	Type	Chain	Res	Link	Chirals	Torsions	Rings
2	A1IE8	A	501	-	-	0/9/25/25	0/5/5/5
2	A1IE8	B	501	-	-	0/9/25/25	0/5/5/5

All (12) bond length outliers are listed below:

Mol	Chain	Res	Type	Atoms	Z	Observed(Å)	Ideal(Å)
2	B	501	A1IE8	C01-N02	6.95	1.45	1.34

Continued on next page...

Continued from previous page...

Mol	Chain	Res	Type	Atoms	Z	Observed(Å)	Ideal(Å)
2	A	501	A1IE8	C01-N02	6.93	1.45	1.34
2	A	501	A1IE8	O13-C14	-4.33	1.32	1.38
2	B	501	A1IE8	O13-C14	-4.27	1.32	1.38
2	A	501	A1IE8	C22-C21	3.85	1.53	1.49
2	B	501	A1IE8	C22-C21	3.63	1.53	1.49
2	B	501	A1IE8	C15-C14	3.56	1.39	1.33
2	A	501	A1IE8	C15-C14	3.52	1.39	1.33
2	B	501	A1IE8	C16-N17	3.09	1.46	1.39
2	A	501	A1IE8	C16-N17	3.07	1.46	1.39
2	A	501	A1IE8	C11-C15	2.16	1.45	1.42
2	B	501	A1IE8	C11-C15	2.13	1.45	1.42

All (16) bond angle outliers are listed below:

Mol	Chain	Res	Type	Atoms	Z	Observed(°)	Ideal(°)
2	A	501	A1IE8	C12-O13-C14	10.15	111.49	105.31
2	B	501	A1IE8	C12-O13-C14	10.11	111.47	105.31
2	B	501	A1IE8	O13-C14-C15	-5.89	107.64	112.49
2	A	501	A1IE8	O13-C14-C15	-5.89	107.65	112.49
2	B	501	A1IE8	C18-C26-C21	3.47	107.49	105.28
2	A	501	A1IE8	C11-N10-C01	3.37	120.29	116.69
2	A	501	A1IE8	C18-C26-C21	3.35	107.41	105.28
2	B	501	A1IE8	C11-N10-C01	3.29	120.20	116.69
2	B	501	A1IE8	C22-C21-N20	2.77	125.95	120.56
2	A	501	A1IE8	C07-N06-C05	2.74	121.65	116.85
2	B	501	A1IE8	C07-N06-C05	2.68	121.55	116.85
2	B	501	A1IE8	C03-N02-C01	-2.67	119.62	123.15
2	A	501	A1IE8	C03-N02-C01	-2.62	119.69	123.15
2	A	501	A1IE8	C22-C21-N20	2.42	125.25	120.56
2	A	501	A1IE8	C26-C21-N20	-2.11	107.46	111.39
2	B	501	A1IE8	C26-C21-N20	-2.04	107.60	111.39

There are no chirality outliers.

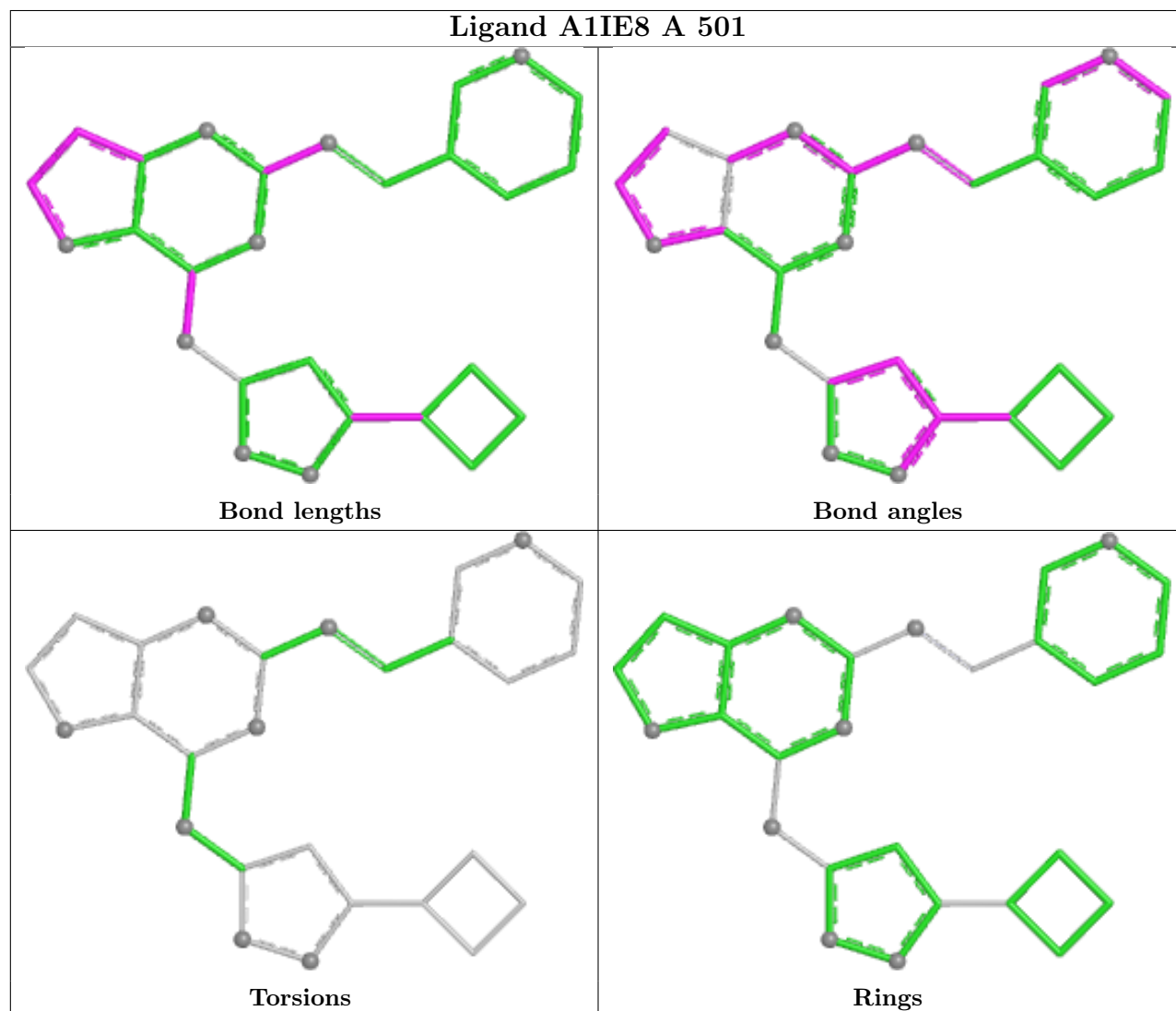
There are no torsion outliers.

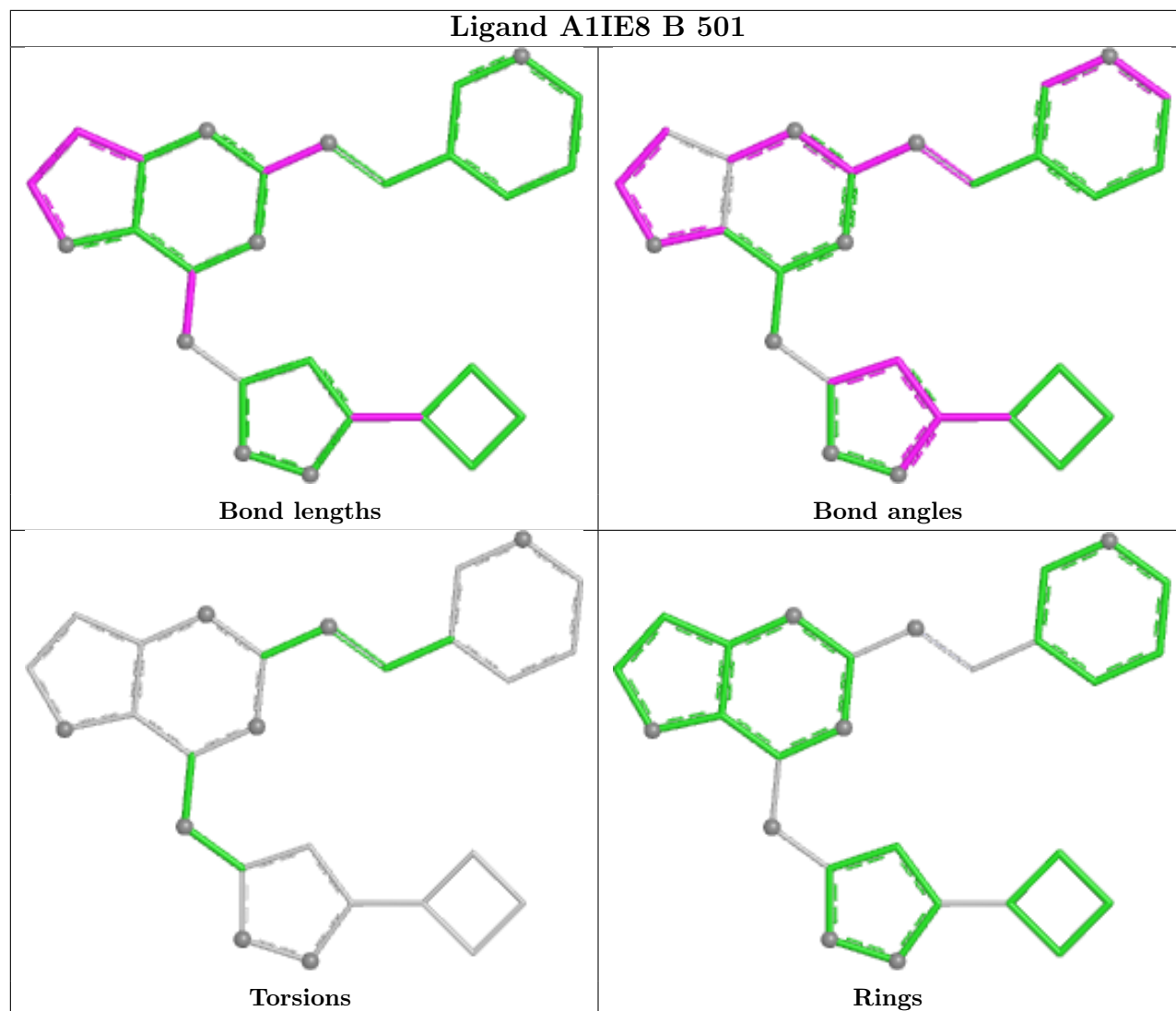
There are no ring outliers.

No monomer is involved in short contacts.

The following is a two-dimensional graphical depiction of Mogul quality analysis of bond lengths, bond angles, torsion angles, and ring geometry for all instances of the Ligand of Interest. In addition, ligands with molecular weight > 250 and outliers as shown on the validation Tables will also be included. For torsion angles, if less than 5% of the Mogul distribution of torsion angles is within 10 degrees of the torsion angle in question, then that torsion angle is considered an outlier.

Any bond that is central to one or more torsion angles identified as an outlier by Mogul will be highlighted in the graph. For rings, the root-mean-square deviation (RMSD) between the ring in question and similar rings identified by Mogul is calculated over all ring torsion angles. If the average RMSD is greater than 60 degrees and the minimal RMSD between the ring in question and any Mogul-identified rings is also greater than 60 degrees, then that ring is considered an outlier. The outliers are highlighted in purple. The color gray indicates Mogul did not find sufficient equivalents in the CSD to analyse the geometry.





5.7 Other polymers [i](#)

There are no such residues in this entry.

5.8 Polymer linkage issues [i](#)

There are no chain breaks in this entry.

6 Fit of model and data

6.1 Protein, DNA and RNA chains

In the following table, the column labelled ‘#RSRZ > 2’ contains the number (and percentage) of RSRZ outliers, followed by percent RSRZ outliers for the chain as percentile scores relative to all X-ray entries and entries of similar resolution. The OWAB column contains the minimum, median, 95th percentile and maximum values of the occupancy-weighted average B-factor per residue. The column labelled ‘Q < 0.9’ lists the number of (and percentage) of residues with an average occupancy less than 0.9.

Mol	Chain	Analysed	<RSRZ>	#RSRZ>2	OWAB(Å ²)	Q<0.9
1	A	361/442 (81%)	0.31	31 (8%) 16 17	19, 39, 87, 113	0
1	B	347/442 (78%)	0.19	26 (7%) 20 22	18, 35, 78, 115	0
All	All	708/884 (80%)	0.25	57 (8%) 18 19	18, 37, 85, 115	0

All (57) RSRZ outliers are listed below:

Mol	Chain	Res	Type	RSRZ
1	A	291	PHE	7.8
1	B	291	PHE	7.1
1	B	289	THR	5.7
1	B	93	PHE	5.7
1	B	288	TYR	5.4
1	A	286	PRO	5.4
1	A	120	GLY	5.2
1	B	67	PHE	5.2
1	A	296	ILE	4.9
1	A	289	THR	4.8
1	A	294	PRO	4.5
1	A	67	PHE	4.4
1	A	93	PHE	4.4
1	B	120	GLY	4.3
1	B	208	VAL	4.2
1	A	293	PHE	4.1
1	A	34	GLY	4.0
1	A	63	GLY	4.0
1	A	66	SER	3.9
1	A	122	LYS	3.8
1	A	288	TYR	3.7
1	B	36	LYS	3.6
1	B	293	PHE	3.6
1	A	292	LYS	3.6

Continued on next page...

Continued from previous page...

Mol	Chain	Res	Type	RSRZ
1	A	123	LYS	3.4
1	A	121	GLU	3.2
1	B	121	GLU	3.2
1	B	91	LYS	2.9
1	B	66	SER	2.8
1	B	286	PRO	2.8
1	B	290	GLU	2.8
1	A	299	HIS	2.7
1	A	32	LYS	2.7
1	A	25	SER	2.6
1	B	92	ARG	2.6
1	B	125	GLU	2.5
1	A	68	GLY	2.5
1	A	300	PRO	2.5
1	A	35	SER	2.4
1	A	151	GLN	2.4
1	B	285	ASN	2.3
1	A	297	LYS	2.3
1	A	148	ARG	2.3
1	A	125	GLU	2.3
1	B	307	PRO	2.2
1	A	65	GLY	2.2
1	B	382	ALA	2.2
1	B	287	ASN	2.1
1	B	292	LYS	2.1
1	B	294	PRO	2.1
1	A	28	VAL	2.1
1	B	68	GLY	2.1
1	B	282	ARG	2.1
1	B	99	GLN	2.0
1	A	30	ARG	2.0
1	B	306	ARG	2.0
1	A	145	HIS	2.0

6.2 Non-standard residues in protein, DNA, RNA chains ⓘ

There are no non-standard protein/DNA/RNA residues in this entry.

6.3 Carbohydrates ⓘ

There are no oligosaccharides in this entry.

6.4 Ligands ⓘ

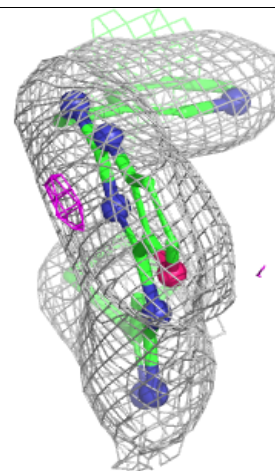
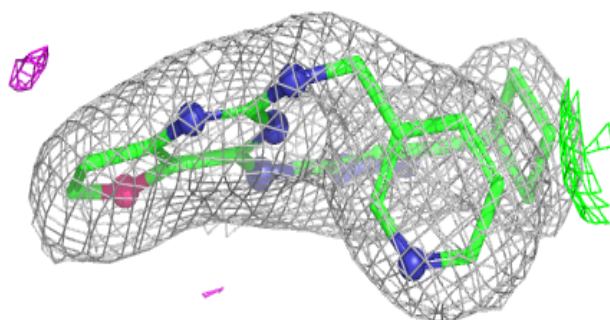
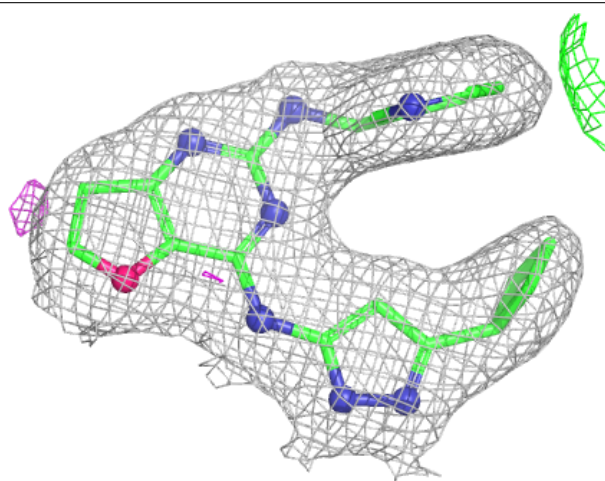
In the following table, the Atoms column lists the number of modelled atoms in the group and the number defined in the chemical component dictionary. The B-factors column lists the minimum, median, 95th percentile and maximum values of B factors of atoms in the group. The column labelled 'Q< 0.9' lists the number of atoms with occupancy less than 0.9.

Mol	Type	Chain	Res	Atoms	RSCC	RSR	B-factors(\AA^2)	Q<0.9
2	A1IE8	A	501	27/27	0.96	0.07	27,33,36,38	0
2	A1IE8	B	501	27/27	0.97	0.06	22,28,33,38	0

The following is a graphical depiction of the model fit to experimental electron density of all instances of the Ligand of Interest. In addition, ligands with molecular weight > 250 and outliers as shown on the geometry validation Tables will also be included. Each fit is shown from different orientation to approximate a three-dimensional view.

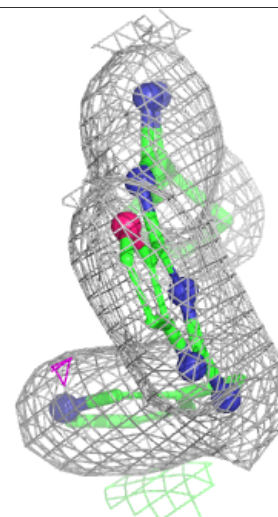
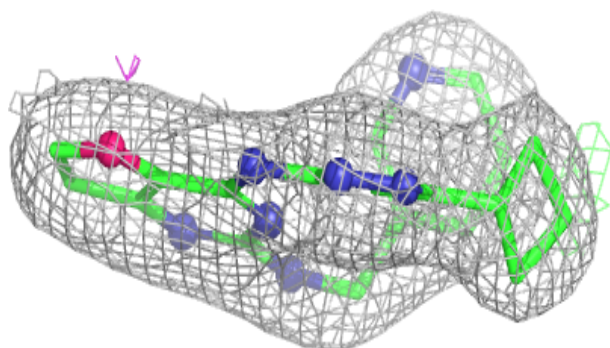
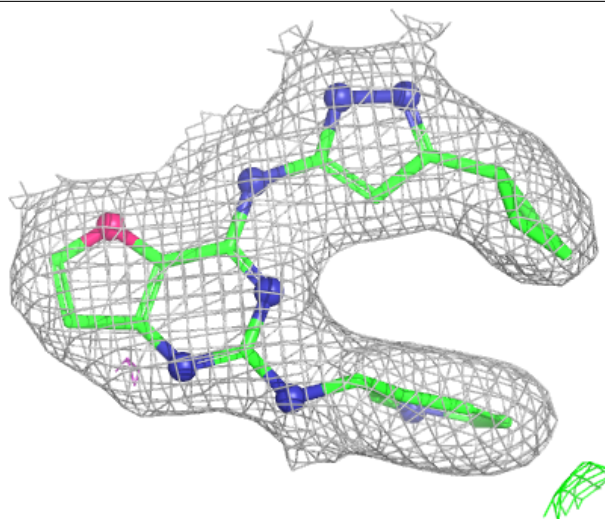
Electron density around A1IE8 A 501:

2mF_o-DF_c (at 0.7 rmsd) in gray
mF_o-DF_c (at 3 rmsd) in purple (negative)
and green (positive)



Electron density around A1IE8 B 501:

$2mF_o-DF_c$ (at 0.7 rmsd) in gray
 mF_o-DF_c (at 3 rmsd) in purple (negative)
and green (positive)



6.5 Other polymers [i](#)

There are no such residues in this entry.