



wwPDB X-ray Structure Validation Summary Report ⓘ

Mar 8, 2026 – 04:07 PM UTC

PDB ID : 9ECY / pdb_00009ecy
Title : Crystal structure of the SARS-CoV-2 NTD-targeted neutralizing antibody WRAIR-2039
Authors : Sankhala, R.S.; Jensen, J.L.; Joyce, M.G.
Deposited on : 2024-11-15
Resolution : 1.54 Å(reported)

This is a wwPDB X-ray Structure Validation Summary Report for a publicly released PDB entry.

We welcome your comments at validation@mail.wwpdb.org

A user guide is available at

<https://www.wwpdb.org/validation/2017/XrayValidationReportHelp>

with specific help available everywhere you see the ⓘ symbol.

The types of validation reports are described at

<http://www.wwpdb.org/validation/2017/FAQs#types>.

The following versions of software and data (see [references ⓘ](#)) were used in the production of this report:

MolProbity	:	4-5-2 with Phenix2.0
Mogul	:	2022.3.0, CSD as543be (2022)
Xtriage (Phenix)	:	2.0
EDS	:	3.0
Buster-report	:	wwPDB partial adaption of 1.1.7 (2018)
Percentile statistics	:	20250101.v01 (using entries in the PDB archive January 1st 2025)
CCP4	:	9.0.010 (Gargrove)
Density-Fitness	:	1.0.12
Ideal geometry (proteins)	:	Engh & Huber (2001)
Ideal geometry (DNA, RNA)	:	Parkinson et al. (1996)
Validation Pipeline (wwPDB-VP)	:	2.49

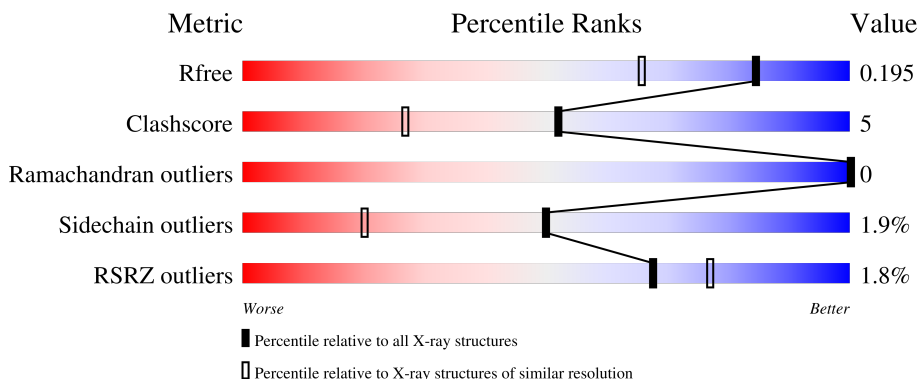
1 Overall quality at a glance

The following experimental techniques were used to determine the structure:

X-RAY DIFFRACTION

The reported resolution of this entry is 1.54 Å.

Percentile scores (ranging between 0-100) for global validation metrics of the entry are shown in the following graphic. The table shows the number of entries on which the scores are based.



Metric	Whole archive (#Entries)	Similar resolution (#Entries, resolution range(Å))
R_{free}	180053	1003 (1.54-1.54)
Clashscore	190562	1025 (1.54-1.54)
Ramachandran outliers	187476	1007 (1.54-1.54)
Sidechain outliers	187428	1007 (1.54-1.54)
RSRZ outliers	180081	1002 (1.54-1.54)

The table below summarises the geometric issues observed across the polymeric chains and their fit to the electron density. The red, orange, yellow and green segments of the lower bar indicate the fraction of residues that contain outliers for ≥ 3 , 2, 1 and 0 types of geometric quality criteria respectively. A grey segment represents the fraction of residues that are not modelled. The numeric value for each fraction is indicated below the corresponding segment, with a dot representing fractions $\leq 5\%$. The upper red bar (where present) indicates the fraction of residues that have poor fit to the electron density. The numeric value is given above the bar.

Mol	Chain	Length	Quality of chain
1	H	222	<div> <div></div> <div>90%</div> <div>9%</div> </div>
2	L	218	<div> <div>2%</div> <div>93%</div> <div>7%</div> </div>

2 Entry composition [i](#)

There are 5 unique types of molecules in this entry. The entry contains 7029 atoms, of which 3304 are hydrogens and 0 are deuteriums.

In the tables below, the ZeroOcc column contains the number of atoms modelled with zero occupancy, the AltConf column contains the number of residues with at least one atom in alternate conformation and the Trace column contains the number of residues modelled with at most 2 atoms.

- Molecule 1 is a protein called WRAIR-2039 Fab heavy chain.

Mol	Chain	Residues	Atoms						ZeroOcc	AltConf	Trace
1	H	222	Total	C	H	N	O	S	0	3	0
			3310	1049	1642	273	336	10			

- Molecule 2 is a protein called WRAIR-2039 Fab light chain.

Mol	Chain	Residues	Atoms						ZeroOcc	AltConf	Trace
2	L	218	Total	C	H	N	O	S	0	3	0
			3220	1020	1592	269	334	5			

- Molecule 3 is GLYCEROL (CCD ID: GOL) (formula: $C_3H_8O_3$).



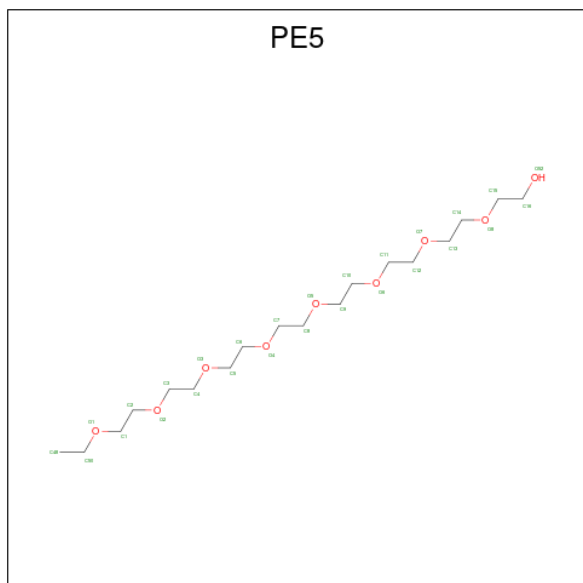
Mol	Chain	Residues	Atoms				ZeroOcc	AltConf
3	H	1	Total	C	H	O	0	0
			14	3	8	3		
3	L	1	Total	C	H	O	0	0
			14	3	8	3		

Continued on next page...

Continued from previous page...

Mol	Chain	Residues	Atoms				ZeroOcc	AltConf
3	L	1	Total	C	H	O	0	0
			14	3	8	3		
3	L	1	Total	C	H	O	0	0
			14	3	8	3		

- Molecule 4 is 3,6,9,12,15,18,21,24-OCTAOXAHEXACOSAN-1-OL (CCD ID: PE5) (formula: $C_{18}H_{38}O_9$).



Mol	Chain	Residues	Atoms				ZeroOcc	AltConf
4	L	1	Total	C	H	O	0	0
			65	18	38	9		

- Molecule 5 is water.

Mol	Chain	Residues	Atoms		ZeroOcc	AltConf
5	H	192	Total	O	0	0
			192	192		
5	L	186	Total	O	0	0
			186	186		

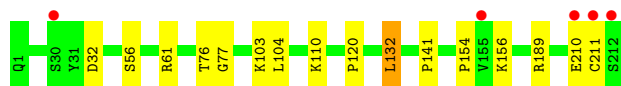
3 Residue-property plots [i](#)

These plots are drawn for all protein, RNA, DNA and oligosaccharide chains in the entry. The first graphic for a chain summarises the proportions of the various outlier classes displayed in the second graphic. The second graphic shows the sequence view annotated by issues in geometry and electron density. Residues are color-coded according to the number of geometric quality criteria for which they contain at least one outlier: green = 0, yellow = 1, orange = 2 and red = 3 or more. A red dot above a residue indicates a poor fit to the electron density ($RSRZ > 2$). Stretches of 2 or more consecutive residues without any outlier are shown as a green connector. Residues present in the sample, but not in the model, are shown in grey.

- Molecule 1: WRAIR-2039 Fab heavy chain



- Molecule 2: WRAIR-2039 Fab light chain



4 Data and refinement statistics

Property	Value	Source
Space group	P 21 21 21	Depositor
Cell constants a, b, c, α , β , γ	63.42Å 69.07Å 102.47Å 90.00° 90.00° 90.00°	Depositor
Resolution (Å)	53.93 – 1.54 53.93 – 1.54	Depositor EDS
% Data completeness (in resolution range)	89.8 (53.93-1.54) 89.8 (53.93-1.54)	Depositor EDS
R_{merge}	(Not available)	Depositor
R_{sym}	(Not available)	Depositor
$\langle I/\sigma(I) \rangle$ ¹	1.27 (at 1.55Å)	Xtriage
Refinement program	PHENIX (1.21.1_5286: ???)	Depositor
R, R_{free}	0.157 , 0.194 0.159 , 0.195	Depositor DCC
R_{free} test set	3152 reflections (4.72%)	wwPDB-VP
Wilson B-factor (Å ²)	20.4	Xtriage
Anisotropy	0.032	Xtriage
Bulk solvent k_{sol} (e/Å ³), B_{sol} (Å ²)	0.41 , 41.7	EDS
L-test for twinning ²	$\langle L \rangle = 0.49$, $\langle L^2 \rangle = 0.33$	Xtriage
Estimated twinning fraction	No twinning to report.	Xtriage
F_o, F_c correlation	0.97	EDS
Total number of atoms	7029	wwPDB-VP
Average B, all atoms (Å ²)	28.0	wwPDB-VP

Xtriage's analysis on translational NCS is as follows: *The largest off-origin peak in the Patterson function is 5.00% of the height of the origin peak. No significant pseudotranslation is detected.*

¹Intensities estimated from amplitudes.

²Theoretical values of $\langle |L| \rangle$, $\langle L^2 \rangle$ for acentric reflections are 0.5, 0.333 respectively for untwinned datasets, and 0.375, 0.2 for perfectly twinned datasets.

5 Model quality [i](#)

5.1 Standard geometry [i](#)

Bond lengths and bond angles in the following residue types are not validated in this section: PE5, GOL

The Z score for a bond length (or angle) is the number of standard deviations the observed value is removed from the expected value. A bond length (or angle) with $|Z| > 5$ is considered an outlier worth inspection. RMSZ is the root-mean-square of all Z scores of the bond lengths (or angles).

Mol	Chain	Bond lengths		Bond angles	
		RMSZ	$\# Z > 5$	RMSZ	$\# Z > 5$
1	H	1.01	0/1716	0.98	2/2341 (0.1%)
2	L	0.97	1/1676 (0.1%)	0.95	0/2290
All	All	0.99	1/3392 (0.0%)	0.96	2/4631 (0.0%)

All (1) bond length outliers are listed below:

Mol	Chain	Res	Type	Atoms	Z	Observed(Å)	Ideal(Å)
2	L	210	GLU	CD-OE1	5.62	1.36	1.25

All (2) bond angle outliers are listed below:

Mol	Chain	Res	Type	Atoms	Z	Observed(°)	Ideal(°)
1	H	161	SER	CA-C-N	-5.27	109.64	121.18
1	H	161	SER	C-N-CA	-5.27	109.64	121.18

There are no chirality outliers.

There are no planarity outliers.

5.2 Too-close contacts [i](#)

In the following table, the Non-H and H(model) columns list the number of non-hydrogen atoms and hydrogen atoms in the chain respectively. The H(added) column lists the number of hydrogen atoms added and optimized by MolProbity. The Clashes column lists the number of clashes within the asymmetric unit, whereas Symm-Clashes lists symmetry-related clashes.

Mol	Chain	Non-H	H(model)	H(added)	Clashes	Symm-Clashes
1	H	1668	1642	1642	19	0
2	L	1628	1592	1592	12	0
3	H	6	8	8	0	0

Continued on next page...

Continued from previous page...

Mol	Chain	Non-H	H(model)	H(added)	Clashes	Symm-Clashes
3	L	18	24	24	1	0
4	L	27	38	38	3	0
5	H	192	0	0	3	0
5	L	186	0	0	8	0
All	All	3725	3304	3304	33	0

The all-atom clashscore is defined as the number of clashes found per 1000 atoms (including hydrogen atoms). The all-atom clashscore for this structure is 5.

The worst 5 of 33 close contacts within the same asymmetric unit are listed below, sorted by their clash magnitude.

Atom-1	Atom-2	Interatomic distance (Å)	Clash overlap (Å)
1:H:214:LYS:NZ	5:H:401:HOH:O	1.73	1.18
1:H:117:LYS:NZ	5:H:402:HOH:O	1.86	1.06
4:L:301:PE5:H71	5:L:506:HOH:O	1.86	0.75
1:H:148[A]:GLU:HG3	1:H:149:PRO:HA	1.74	0.69
1:H:188:SER:HB2	1:H:192:GLN:HG3	1.74	0.69

There are no symmetry-related clashes.

5.3 Torsion angles [i](#)

5.3.1 Protein backbone [i](#)

In the following table, the Percentiles column shows the percent Ramachandran outliers of the chain as a percentile score with respect to all X-ray entries followed by that with respect to entries of similar resolution.

The Analysed column shows the number of residues for which the backbone conformation was analysed, and the total number of residues.

Mol	Chain	Analysed	Favoured	Allowed	Outliers	Percentiles	
1	H	223/222 (100%)	215 (96%)	8 (4%)	0	100	100
2	L	219/218 (100%)	210 (96%)	9 (4%)	0	100	100
All	All	442/440 (100%)	425 (96%)	17 (4%)	0	100	100

There are no Ramachandran outliers to report.

5.3.2 Protein sidechains [i](#)

In the following table, the Percentiles column shows the percent sidechain outliers of the chain as a percentile score with respect to all X-ray entries followed by that with respect to entries of similar resolution.

The Analysed column shows the number of residues for which the sidechain conformation was analysed, and the total number of residues.

Mol	Chain	Analysed	Rotameric	Outliers	Percentiles	
1	H	191/188 (102%)	186 (97%)	5 (3%)	40	11
2	L	186/183 (102%)	182 (98%)	4 (2%)	45	15
All	All	377/371 (102%)	368 (98%)	9 (2%)	50	13

5 of 9 residues with a non-rotameric sidechain are listed below:

Mol	Chain	Res	Type
2	L	132[B]	LEU
2	L	211	CYS
1	H	149	PRO
1	H	178	LEU
2	L	56	SER

Sometimes sidechains can be flipped to improve hydrogen bonding and reduce clashes. All (3) such sidechains are listed below:

Mol	Chain	Res	Type
1	H	164	HIS
2	L	126	GLN
2	L	194	GLN

5.3.3 RNA [i](#)

There are no RNA molecules in this entry.

5.4 Non-standard residues in protein, DNA, RNA chains [i](#)

There are no non-standard protein/DNA/RNA residues in this entry.

5.5 Carbohydrates [i](#)

There are no oligosaccharides in this entry.

5.6 Ligand geometry

5 ligands are modelled in this entry.

In the following table, the Counts columns list the number of bonds (or angles) for which Mogul statistics could be retrieved, the number of bonds (or angles) that are observed in the model and the number of bonds (or angles) that are defined in the Chemical Component Dictionary. The Link column lists molecule types, if any, to which the group is linked. The Z score for a bond length (or angle) is the number of standard deviations the observed value is removed from the expected value. A bond length (or angle) with $|Z| > 2$ is considered an outlier worth inspection. RMSZ is the root-mean-square of all Z scores of the bond lengths (or angles).

Mol	Type	Chain	Res	Link	Bond lengths			Bond angles		
					Counts	RMSZ	# Z > 2	Counts	RMSZ	# Z > 2
3	GOL	L	304	-	5,5,5	0.29	0	5,5,5	0.62	0
4	PE5	L	301	-	26,26,26	0.77	0	25,25,25	1.77	5 (20%)
3	GOL	L	302	-	5,5,5	0.44	0	5,5,5	0.43	0
3	GOL	H	301	-	5,5,5	0.37	0	5,5,5	1.28	0
3	GOL	L	303	-	5,5,5	0.32	0	5,5,5	1.74	2 (40%)

In the following table, the Chirals column lists the number of chiral outliers, the number of chiral centers analysed, the number of these observed in the model and the number defined in the Chemical Component Dictionary. Similar counts are reported in the Torsion and Rings columns. '-' means no outliers of that kind were identified.

Mol	Type	Chain	Res	Link	Chirals	Torsions	Rings
3	GOL	L	304	-	-	4/4/4/4	-
4	PE5	L	301	-	-	7/24/24/24	-
3	GOL	L	302	-	-	4/4/4/4	-
3	GOL	H	301	-	-	0/4/4/4	-
3	GOL	L	303	-	-	2/4/4/4	-

There are no bond length outliers.

The worst 5 of 7 bond angle outliers are listed below:

Mol	Chain	Res	Type	Atoms	Z	Observed(°)	Ideal(°)
4	L	301	PE5	C7-O4-C6	5.38	136.80	113.26
4	L	301	PE5	O1-C1-C2	4.59	131.25	110.35
4	L	301	PE5	C3-O2-C2	2.92	126.05	113.26
3	L	303	GOL	O2-C2-C3	2.58	119.87	109.18
3	L	303	GOL	O2-C2-C1	2.51	119.57	109.18

There are no chirality outliers.

5 of 17 torsion outliers are listed below:

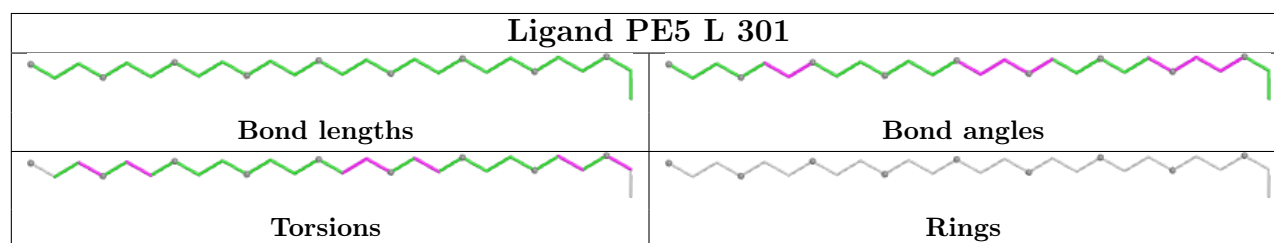
Mol	Chain	Res	Type	Atoms
3	L	303	GOL	O1-C1-C2-C3
3	L	304	GOL	C1-C2-C3-O3
4	L	301	PE5	O4-C7-C8-O5
3	L	302	GOL	O1-C1-C2-C3
3	L	302	GOL	C1-C2-C3-O3

There are no ring outliers.

2 monomers are involved in 4 short contacts:

Mol	Chain	Res	Type	Clashes	Symm-Clashes
3	L	304	GOL	1	0
4	L	301	PE5	3	0

The following is a two-dimensional graphical depiction of Mogul quality analysis of bond lengths, bond angles, torsion angles, and ring geometry for all instances of the Ligand of Interest. In addition, ligands with molecular weight > 250 and outliers as shown on the validation Tables will also be included. For torsion angles, if less than 5% of the Mogul distribution of torsion angles is within 10 degrees of the torsion angle in question, then that torsion angle is considered an outlier. Any bond that is central to one or more torsion angles identified as an outlier by Mogul will be highlighted in the graph. For rings, the root-mean-square deviation (RMSD) between the ring in question and similar rings identified by Mogul is calculated over all ring torsion angles. If the average RMSD is greater than 60 degrees and the minimal RMSD between the ring in question and any Mogul-identified rings is also greater than 60 degrees, then that ring is considered an outlier. The outliers are highlighted in purple. The color gray indicates Mogul did not find sufficient equivalents in the CSD to analyse the geometry.



5.7 Other polymers [i](#)

There are no such residues in this entry.

5.8 Polymer linkage issues [i](#)

There are no chain breaks in this entry.

6 Fit of model and data [i](#)

6.1 Protein, DNA and RNA chains [i](#)

In the following table, the column labelled ‘#RSRZ> 2’ contains the number (and percentage) of RSRZ outliers, followed by percent RSRZ outliers for the chain as percentile scores relative to all X-ray entries and entries of similar resolution. The OWAB column contains the minimum, median, 95th percentile and maximum values of the occupancy-weighted average B-factor per residue. The column labelled ‘Q< 0.9’ lists the number of (and percentage) of residues with an average occupancy less than 0.9.

Mol	Chain	Analysed	<RSRZ>	#RSRZ>2	OWAB(Å ²)	Q<0.9
1	H	222/222 (100%)	-0.07	3 (1%) 73 80	11, 25, 44, 76	3 (1%)
2	L	218/218 (100%)	-0.06	5 (2%) 61 71	12, 25, 47, 89	3 (1%)
All	All	440/440 (100%)	-0.06	8 (1%) 67 77	11, 25, 47, 89	6 (1%)

The worst 5 of 8 RSRZ outliers are listed below:

Mol	Chain	Res	Type	RSRZ
2	L	211	CYS	4.3
2	L	212	SER	3.3
1	H	215	SER	3.1
2	L	30	SER	2.8
1	H	130	SER	2.5

6.2 Non-standard residues in protein, DNA, RNA chains [i](#)

There are no non-standard protein/DNA/RNA residues in this entry.

6.3 Carbohydrates [i](#)

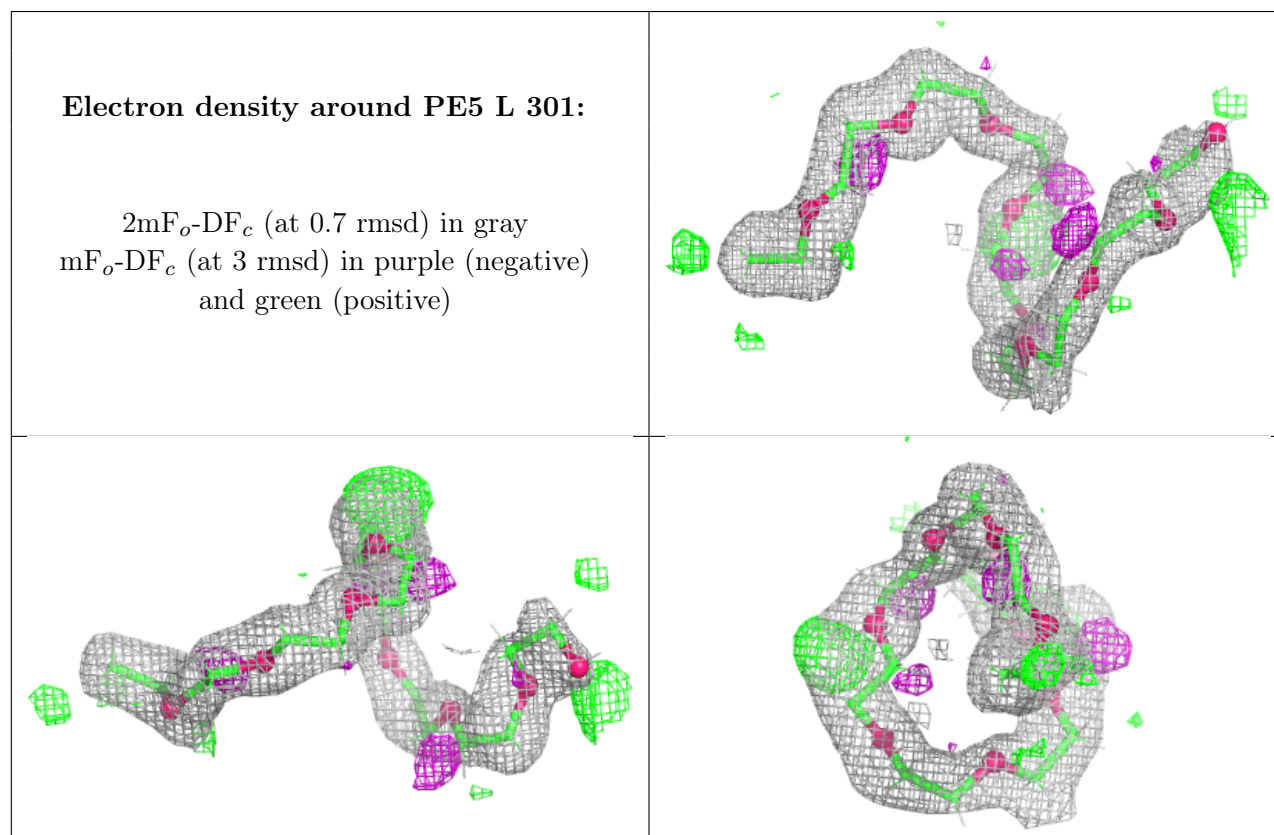
There are no oligosaccharides in this entry.

6.4 Ligands [i](#)

In the following table, the Atoms column lists the number of modelled atoms in the group and the number defined in the chemical component dictionary. The B-factors column lists the minimum, median, 95th percentile and maximum values of B factors of atoms in the group. The column labelled ‘Q< 0.9’ lists the number of atoms with occupancy less than 0.9.

Mol	Type	Chain	Res	Atoms	RSCC	RSR	B-factors(\AA^2)	Q<0.9
3	GOL	H	301	6/6	0.82	0.19	38,64,88,88	0
3	GOL	L	304	6/6	0.83	0.20	51,63,76,76	0
3	GOL	L	302	6/6	0.86	0.13	35,49,74,82	0
4	PE5	L	301	27/27	0.87	0.14	23,37,69,72	0
3	GOL	L	303	6/6	0.93	0.10	20,34,52,52	0

The following is a graphical depiction of the model fit to experimental electron density of all instances of the Ligand of Interest. In addition, ligands with molecular weight > 250 and outliers as shown on the geometry validation Tables will also be included. Each fit is shown from different orientation to approximate a three-dimensional view.



6.5 Other polymers ⓘ

There are no such residues in this entry.