



Full wwPDB EM Validation Report ⓘ

Mar 9, 2026 – 06:04 PM UTC

PDB ID : 9DVT / pdb_00009dvt
EMDB ID : EMD-47222
Title : Cryo-EM structure of RpaA bound to PkaiBC DNA and the CTD of the alpha subunit of RNAP from the cyanobacterium *Synechococcus elongatus*
Authors : Fang, M.; Gu, Y.; Matyszewski, M.; Leanca, M.; LiWang, A.; Yuzenkova, Y.; Corbett, K.D.; Golden, S.E.
Deposited on : 2024-10-08
Resolution : 3.74 Å (reported)
Based on initial model : .

This is a Full wwPDB EM Validation Report for a publicly released PDB entry.

We welcome your comments at validation@mail.wwpdb.org

A user guide is available at

<https://www.wwpdb.org/validation/2017/EMValidationReportHelp>

with specific help available everywhere you see the ⓘ symbol.

The types of validation reports are described at

<http://www.wwpdb.org/validation/2017/FAQs#types>.

The following versions of software and data (see [references ⓘ](#)) were used in the production of this report:

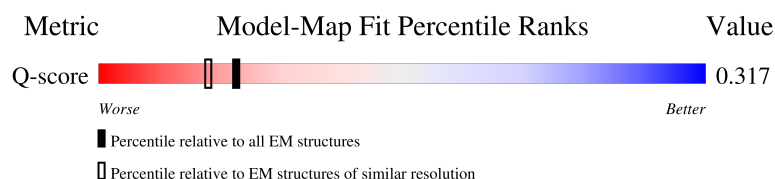
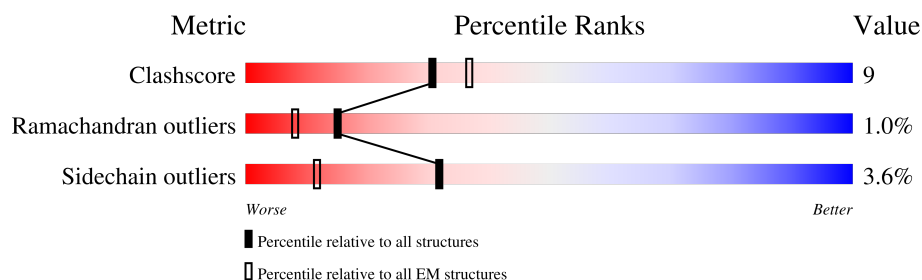
EMDB validation analysis : 0.0.1.dev132
Mogul : 2022.3.0, CSD as543be (2022)
MolProbity : 4-5-2 with Phenix2.0
Percentile statistics : 20250101.v01 (using entries in the PDB archive January 1st 2025)
EM percentile statistics : 202505.v01 (Using data in the EMDB archive up until May 2025)
MapQ : 1.9.13
Ideal geometry (proteins) : Engh & Huber (2001)
Ideal geometry (DNA, RNA) : Parkinson et al. (1996)
Validation Pipeline (wwPDB-VP) : 2.49

1 Overall quality at a glance

The following experimental techniques were used to determine the structure:
ELECTRON MICROSCOPY

The reported resolution of this entry is 3.74 Å.

Percentile scores (ranging between 0-100) for global validation metrics of the entry are shown in the following graphic. The table shows the number of entries on which the scores are based.



Metric	Whole archive (#Entries)	EM structures (#Entries)	Similar EM resolution (#Entries, resolution range(Å))
Clashscore	229148	23984	-
Ramachandran outliers	224038	23583	-
Sidechain outliers	223484	23102	-
Q-score	-	25397	10346 (3.24 - 4.24)

The table below summarises the geometric issues observed across the polymeric chains and their fit to the map. The red, orange, yellow and green segments of the bar indicate the fraction of residues that contain outliers for ≥ 3 , 2, 1 and 0 types of geometric quality criteria respectively. A grey segment represents the fraction of residues that are not modelled. The numeric value for each fraction is indicated below the corresponding segment, with a dot representing fractions $\leq 5\%$. The upper red bar (where present) indicates the fraction of residues that have poor fit to the EM map (all-atom inclusion $< 40\%$). The numeric value is given above the bar.

Mol	Chain	Length	Quality of chain
1	1	105	 12% 22% 66%
2	2	105	 5% 10% 25% 66%
3	A	309	 9% 17% 80%
4	R	249	 22% 78% 15% 5%

Continued on next page...

Continued from previous page...

Mol	Chain	Length	Quality of chain
4	S	249	<div><div></div><div>18%</div><div></div><div>77%</div><div></div><div>14%</div><div></div><div>7%</div></div>
5	G	399	<div><div></div><div>8%</div><div></div><div>15%</div><div></div><div>81%</div></div>

2 Entry composition

There are 5 unique types of molecules in this entry. The entry contains 6369 atoms, of which 0 are hydrogens and 0 are deuteriums.

In the tables below, the AltConf column contains the number of residues with at least one atom in alternate conformation and the Trace column contains the number of residues modelled with at most 2 atoms.

- Molecule 1 is a DNA chain called Non-template DNA.

Mol	Chain	Residues	Atoms					AltConf	Trace
1	1	36	Total	C	N	O	P	0	0
			747	355	143	213	36		

- Molecule 2 is a DNA chain called Template DNA.

Mol	Chain	Residues	Atoms					AltConf	Trace
2	2	36	Total	C	N	O	P	0	0
			729	350	124	219	36		

- Molecule 3 is a protein called DNA-directed RNA polymerase subunit alpha.

Mol	Chain	Residues	Atoms					AltConf	Trace
3	A	62	Total	C	N	O	S	0	0
			490	306	81	102	1		

- Molecule 4 is a protein called DNA-binding dual master transcriptional regulator RpaA.

Mol	Chain	Residues	Atoms						AltConf	Trace
4	R	236	Total	C	N	O	P	S	0	0
			1904	1206	330	358	1	9		
4	S	232	Total	C	N	O	P	S	0	0
			1876	1191	325	350	1	9		

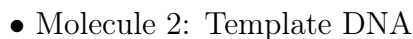
There are 2 discrepancies between the modelled and reference sequences:

Chain	Residue	Modelled	Actual	Comment	Reference
R	121	GLN	ARG	conflict	UNP Q31S42
S	121	GLN	ARG	conflict	UNP Q31S42

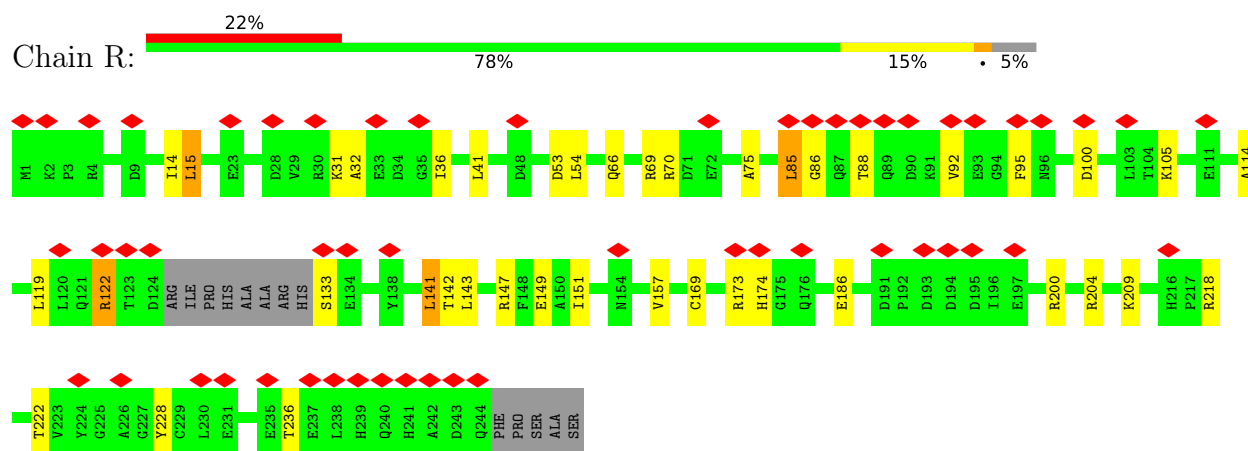
- Molecule 5 is a protein called RNA polymerase sigma factor SigA1.

Mol	Chain	Residues	Atoms					AltConf	Trace
5	G	77	Total	C	N	O	S	0	0
			623	390	119	113	1		

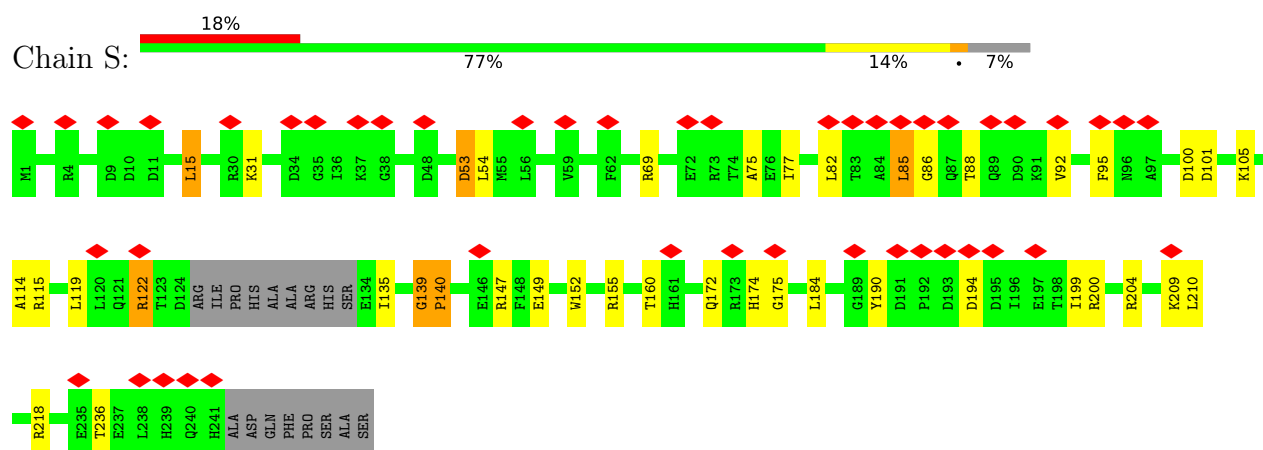
- Molecule 1: Non-template DNA



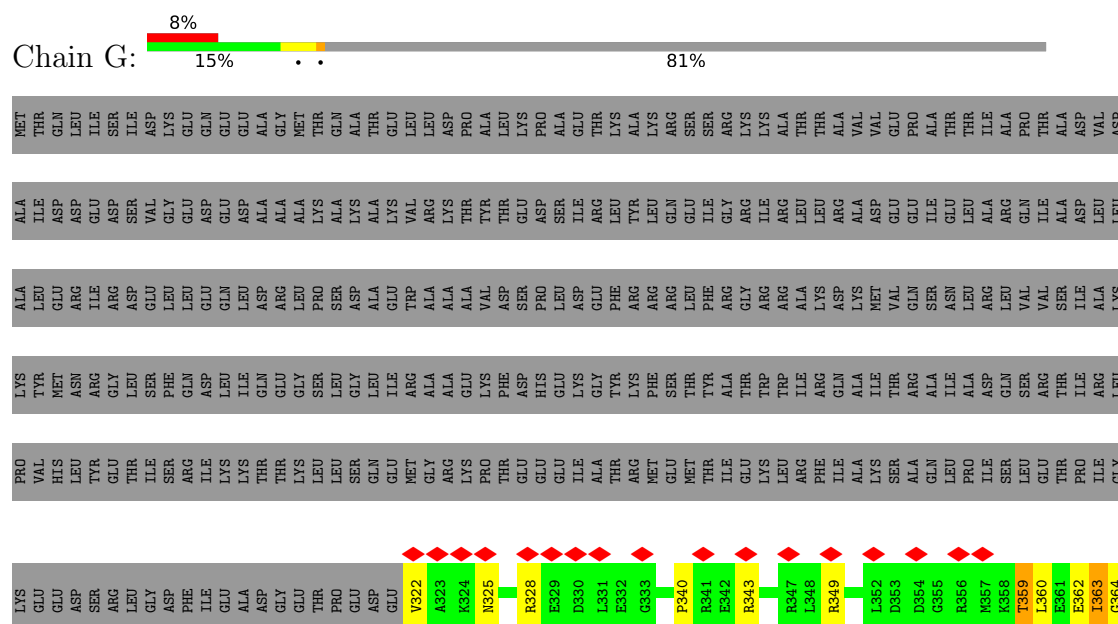
- Molecule 4: DNA-binding dual master transcriptional regulator RpaA

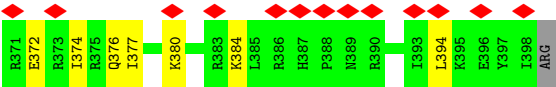


- Molecule 4: DNA-binding dual master transcriptional regulator RpaA



- Molecule 5: RNA polymerase sigma factor SigA1





4 Experimental information

Property	Value	Source
EM reconstruction method	SINGLE PARTICLE	Depositor
Imposed symmetry	POINT, Not provided	
Number of particles used	81192	Depositor
Resolution determination method	FSC 0.143 CUT-OFF	Depositor
CTF correction method	NONE	Depositor
Microscope	TFS KRIOS	Depositor
Voltage (kV)	300	Depositor
Electron dose ($e^-/\text{\AA}^2$)	50	Depositor
Minimum defocus (nm)	800	Depositor
Maximum defocus (nm)	2000	Depositor
Magnification	Not provided	
Image detector	FEI FALCON IV (4k x 4k)	Depositor
Maximum map value	1.094	Depositor
Minimum map value	-0.590	Depositor
Average map value	-0.000	Depositor
Map value standard deviation	0.015	Depositor
Recommended contour level	0.25	Depositor
Map size (\AA)	561.0, 561.0, 561.0	wwPDB
Map dimensions	400, 400, 400	wwPDB
Map angles ($^\circ$)	90.0, 90.0, 90.0	wwPDB
Pixel spacing (\AA)	1.4025, 1.4025, 1.4025	Depositor

5 Model quality

5.1 Standard geometry

Bond lengths and bond angles in the following residue types are not validated in this section: PHD

The Z score for a bond length (or angle) is the number of standard deviations the observed value is removed from the expected value. A bond length (or angle) with $|Z| > 5$ is considered an outlier worth inspection. RMSZ is the root-mean-square of all Z scores of the bond lengths (or angles).

Mol	Chain	Bond lengths		Bond angles	
		RMSZ	# Z >5	RMSZ	# Z >5
1	1	0.24	0/840	0.49	0/1296
2	2	0.24	0/814	0.49	0/1252
3	A	0.12	0/495	0.36	0/670
4	R	0.11	0/1927	0.37	0/2612
4	S	0.11	0/1899	0.32	0/2574
5	G	0.13	0/627	0.43	0/839
All	All	0.15	0/6602	0.40	0/9243

Chiral center outliers are detected by calculating the chiral volume of a chiral center and verifying if the center is modelled as a planar moiety or with the opposite hand. A planarity outlier is detected by checking planarity of atoms in a peptide group, atoms in a mainchain group or atoms of a sidechain that are expected to be planar.

Mol	Chain	#Chirality outliers	#Planarity outliers
4	R	0	3
4	S	0	2
5	G	0	1
All	All	0	6

There are no bond length outliers.

There are no bond angle outliers.

There are no chirality outliers.

All (6) planarity outliers are listed below:

Mol	Chain	Res	Type	Group
5	G	359	THR	Peptide
4	R	122	ARG	Sidechain
4	R	141	LEU	Peptide
4	R	218	ARG	Sidechain

Continued on next page...

Continued from previous page...

Mol	Chain	Res	Type	Group
4	S	122	ARG	Sidechain
4	S	218	ARG	Sidechain

5.2 Too-close contacts

In the following table, the Non-H and H(model) columns list the number of non-hydrogen atoms and hydrogen atoms in the chain respectively. The H(added) column lists the number of hydrogen atoms added and optimized by MolProbity. The Clashes column lists the number of clashes within the asymmetric unit, whereas Symm-Clashes lists symmetry-related clashes.

Mol	Chain	Non-H	H(model)	H(added)	Clashes	Symm-Clashes
1	1	747	0	406	28	0
2	2	729	0	409	21	0
3	A	490	0	485	4	0
4	R	1904	0	1913	34	0
4	S	1876	0	1891	34	0
5	G	623	0	654	13	0
All	All	6369	0	5758	108	0

The all-atom clashscore is defined as the number of clashes found per 1000 atoms (including hydrogen atoms). The all-atom clashscore for this structure is 9.

All (108) close contacts within the same asymmetric unit are listed below, sorted by their clash magnitude.

Atom-1	Atom-2	Interatomic distance (Å)	Clash overlap (Å)
4:R:69:ARG:NH2	4:R:100:ASP:OD2	2.23	0.72
4:R:114:ALA:HB2	4:S:95:PHE:HE1	1.55	0.71
1:1:17:DG:OP1	4:R:222:THR:OG1	2.04	0.70
4:R:122:ARG:HH21	4:S:100:ASP:HB3	1.57	0.69
4:R:95:PHE:HE1	4:S:114:ALA:HB2	1.59	0.68
1:1:16:DG:OP2	4:R:200:ARG:NH2	2.27	0.68
1:1:29:DT:H3'	4:S:204:ARG:HH12	1.62	0.64
4:R:100:ASP:HB3	4:S:122:ARG:HH21	1.62	0.63
5:G:359:THR:N	5:G:362:GLU:OE1	2.31	0.62
1:1:29:DT:H3'	4:S:204:ARG:HH22	1.65	0.62
1:1:20:DA:H2''	1:1:21:DA:C8	2.35	0.61
4:R:100:ASP:O	4:S:122:ARG:NH2	2.33	0.60
1:1:35:DT:H4'	1:1:36:DC:OP1	2.01	0.60
1:1:23:DG:OP1	3:A:287:LYS:NZ	2.24	0.60
1:1:18:DT:O5'	4:R:204:ARG:NH1	2.33	0.59

Continued on next page...

Continued from previous page...

Atom-1	Atom-2	Interatomic distance (Å)	Clash overlap (Å)
1:1:25:DG:H2''	1:1:26:DG:C8	2.38	0.58
4:R:70:ARG:NH2	4:S:172:GLN:O	2.38	0.56
2:2:89:DC:H2''	2:2:90:DC:H5''	1.87	0.56
4:R:122:ARG:HD3	4:S:122:ARG:HD3	1.87	0.56
4:R:122:ARG:NH2	4:S:100:ASP:O	2.37	0.54
1:1:27:DT:OP2	4:S:200:ARG:NH2	2.38	0.54
3:A:239:THR:CG2	3:A:240:PRO:HD2	2.37	0.54
4:R:92:VAL:HA	4:R:95:PHE:HD2	1.71	0.54
4:R:173:ARG:NH2	4:R:186:GLU:OE1	2.37	0.54
4:S:101:ASP:OD2	4:S:115:ARG:NH1	2.40	0.53
2:2:69:DC:H2'	2:2:70:DG:C8	2.45	0.52
1:1:18:DT:OP2	4:R:204:ARG:HD2	2.10	0.51
4:S:53:PHD:OP1	4:S:105:LYS:NZ	2.44	0.51
1:1:31:DA:H1'	1:1:32:DA:H5'	1.93	0.51
2:2:87:DT:H2''	2:2:88:DA:C8	2.46	0.51
4:R:69:ARG:NH1	4:R:75:ALA:O	2.43	0.51
4:R:36:ILE:HG22	4:R:142:THR:HG21	1.93	0.50
1:1:27:DT:H2'	4:S:200:ARG:HH11	1.76	0.50
4:R:95:PHE:CE1	4:S:114:ALA:HB2	2.44	0.50
2:2:72:DG:H5''	4:S:160:THR:HG22	1.94	0.50
4:R:32:ALA:HB2	4:R:41:LEU:HD12	1.93	0.50
2:2:64:DT:H2''	2:2:65:DG:C8	2.47	0.49
5:G:340:PRO:HA	5:G:343:ARG:NE	2.26	0.49
2:2:90:DC:H2'	2:2:91:DT:H72	1.94	0.49
4:R:157:VAL:HG11	4:R:209:LYS:HB3	1.95	0.49
2:2:80:DC:H2''	2:2:81:DC:C6	2.48	0.49
3:A:239:THR:HG23	3:A:240:PRO:HD2	1.94	0.49
1:1:17:DG:OP2	4:R:228:TYR:OH	2.28	0.48
2:2:80:DC:H2''	2:2:81:DC:C5	2.48	0.48
2:2:74:DT:H2'	2:2:75:DT:H71	1.95	0.48
5:G:384:LYS:HZ3	5:G:384:LYS:HB3	1.78	0.48
1:1:21:DA:H4'	1:1:22:DG:OP1	2.13	0.47
4:S:119:LEU:HD23	4:S:122:ARG:HH11	1.79	0.47
4:S:15:LEU:HD21	4:S:31:LYS:HB3	1.95	0.47
1:1:12:DA:H2''	1:1:13:DA:C8	2.49	0.47
4:S:147:ARG:NH1	4:S:149:GLU:OE1	2.48	0.47
4:R:200:ARG:HG2	4:R:228:TYR:OH	2.15	0.47
2:2:84:DC:H2''	2:2:85:DT:H5'	1.97	0.47
4:R:147:ARG:HD2	4:S:175:GLY:O	2.15	0.47
5:G:363:ILE:HD12	5:G:374:ILE:HG21	1.97	0.47
5:G:359:THR:O	5:G:363:ILE:HG13	2.14	0.46

Continued on next page...

Continued from previous page...

Atom-1	Atom-2	Interatomic distance (Å)	Clash overlap (Å)
4:R:15:LEU:HD21	4:R:31:LYS:HB3	1.97	0.46
4:R:141:LEU:HD21	4:R:143:LEU:HD21	1.96	0.46
4:S:69:ARG:HA	4:S:75:ALA:HA	1.97	0.46
4:S:82:LEU:HB3	4:S:105:LYS:HE3	1.97	0.46
1:1:26:DG:H2'	1:1:27:DT:H71	1.97	0.46
2:2:61:DA:H2''	2:2:62:DA:C8	2.51	0.46
4:S:92:VAL:HA	4:S:95:PHE:HD2	1.81	0.46
4:R:88:THR:O	4:R:92:VAL:HG23	2.17	0.45
1:1:13:DA:H8	1:1:13:DA:O5'	1.99	0.45
4:S:69:ARG:NH1	4:S:75:ALA:O	2.49	0.45
1:1:24:DA:P	3:A:285:GLY:HA3	2.57	0.45
1:1:21:DA:H2''	1:1:22:DG:O5'	2.17	0.45
1:1:25:DG:H2''	1:1:26:DG:H8	1.80	0.45
4:R:147:ARG:NH1	4:R:149:GLU:OE1	2.50	0.45
4:R:66:GLN:OE1	4:S:135:ILE:HD11	2.17	0.45
5:G:372:GLU:O	5:G:376:GLN:NE2	2.50	0.45
2:2:93:DT:H2'	2:2:94:DT:C5	2.52	0.44
2:2:65:DG:H2''	2:2:66:DA:OP2	2.16	0.44
1:1:37:DG:H2''	1:1:38:DG:C8	2.53	0.44
4:S:69:ARG:NH1	4:S:77:ILE:O	2.49	0.44
2:2:71:DA:H2''	2:2:72:DG:H8	1.82	0.44
1:1:30:DT:H2''	1:1:31:DA:C8	2.53	0.44
5:G:325:ASN:O	5:G:328:ARG:HG2	2.18	0.44
5:G:340:PRO:HA	5:G:343:ARG:HE	1.83	0.44
2:2:73:DC:H2'	2:2:74:DT:H71	1.99	0.44
4:S:184:LEU:HG	4:S:199:ILE:HD11	2.00	0.44
4:S:88:THR:O	4:S:92:VAL:HG23	2.18	0.43
4:R:66:GLN:O	4:R:70:ARG:HG3	2.17	0.43
5:G:349:ARG:NH1	5:G:359:THR:HA	2.33	0.43
1:1:14:DA:H2''	1:1:15:DA:OP2	2.19	0.43
5:G:377:ILE:HG23	5:G:380:LYS:HE2	2.00	0.43
2:2:90:DC:H2''	2:2:91:DT:H5''	2.00	0.43
4:R:119:LEU:HD23	4:R:122:ARG:HH11	1.83	0.43
2:2:71:DA:H2''	2:2:72:DG:C8	2.54	0.43
4:S:155:ARG:NH2	4:S:209:LYS:O	2.52	0.42
5:G:340:PRO:O	5:G:343:ARG:HG2	2.18	0.42
2:2:72:DG:H5''	4:S:160:THR:CG2	2.49	0.42
5:G:360:LEU:O	5:G:364:GLY:N	2.47	0.42
1:1:29:DT:H3'	4:S:204:ARG:NH1	2.31	0.42
2:2:62:DA:H2'	2:2:63:DT:H71	2.01	0.42
4:S:152:TRP:CD2	4:S:210:LEU:HD22	2.55	0.42

Continued on next page...

Continued from previous page...

Atom-1	Atom-2	Interatomic distance (Å)	Clash overlap (Å)
4:S:190:TYR:HB3	4:S:194:ASP:OD2	2.20	0.41
5:G:380:LYS:O	5:G:384:LYS:HG3	2.21	0.41
1:1:17:DG:H2''	1:1:18:DT:H5'	2.01	0.41
2:2:95:DC:H2''	2:2:96:DA:C8	2.56	0.41
4:S:139:GLY:HA3	4:S:140:PRO:HD3	1.91	0.41
4:R:14:ILE:HG21	4:R:105:LYS:HE2	2.02	0.41
1:1:18:DT:H3'	4:R:204:ARG:NH1	2.35	0.41
4:R:142:THR:HB	4:R:151:ILE:HB	2.03	0.41
4:R:169:CYS:SG	4:R:173:ARG:NH1	2.94	0.40
2:2:93:DT:H2'	2:2:94:DT:C6	2.57	0.40
1:1:15:DA:H1'	1:1:16:DG:H5'	2.02	0.40

There are no symmetry-related clashes.

5.3 Torsion angles [i](#)

5.3.1 Protein backbone [i](#)

In the following table, the Percentiles column shows the percent Ramachandran outliers of the chain as a percentile score with respect to all PDB entries followed by that with respect to all EM entries.

The Analysed column shows the number of residues for which the backbone conformation was analysed, and the total number of residues.

Mol	Chain	Analysed	Favoured	Allowed	Outliers	Percentiles	
3	A	60/309 (19%)	60 (100%)	0	0	100	100
4	R	231/249 (93%)	224 (97%)	5 (2%)	2 (1%)	14	45
4	S	227/249 (91%)	219 (96%)	4 (2%)	4 (2%)	6	34
5	G	75/399 (19%)	70 (93%)	5 (7%)	0	100	100
All	All	593/1206 (49%)	573 (97%)	14 (2%)	6 (1%)	15	43

All (6) Ramachandran outliers are listed below:

Mol	Chain	Res	Type
4	R	85	LEU
4	S	85	LEU
4	S	140	PRO
4	R	86	GLY

Continued on next page...

Continued from previous page...

Mol	Chain	Res	Type
4	S	86	GLY
4	S	139	GLY

5.3.2 Protein sidechains ⓘ

In the following table, the Percentiles column shows the percent sidechain outliers of the chain as a percentile score with respect to all PDB entries followed by that with respect to all EM entries.

The Analysed column shows the number of residues for which the sidechain conformation was analysed, and the total number of residues.

Mol	Chain	Analysed	Rotameric	Outliers	Percentiles	
3	A	55/262 (21%)	51 (93%)	4 (7%)	13	39
4	R	207/217 (95%)	201 (97%)	6 (3%)	37	57
4	S	204/217 (94%)	199 (98%)	5 (2%)	42	61
5	G	66/344 (19%)	62 (94%)	4 (6%)	17	43
All	All	532/1040 (51%)	513 (96%)	19 (4%)	32	54

All (19) residues with a non-rotameric sidechain are listed below:

Mol	Chain	Res	Type
3	A	242	SER
3	A	270	LEU
3	A	291	GLU
3	A	299	ILE
4	R	15	LEU
4	R	54	LEU
4	R	85	LEU
4	R	133	SER
4	R	174	HIS
4	R	236	THR
4	S	15	LEU
4	S	54	LEU
4	S	85	LEU
4	S	174	HIS
4	S	236	THR
5	G	322	VAL
5	G	363	ILE
5	G	367	PHE
5	G	394	LEU

Sometimes sidechains can be flipped to improve hydrogen bonding and reduce clashes. All (3) such sidechains are listed below:

Mol	Chain	Res	Type
4	R	44	GLN
4	S	172	GLN
4	S	176	GLN

5.3.3 RNA ⓘ

There are no RNA molecules in this entry.

5.4 Non-standard residues in protein, DNA, RNA chains ⓘ

2 non-standard protein/DNA/RNA residues are modelled in this entry.

In the following table, the Counts columns list the number of bonds (or angles) for which Mogul statistics could be retrieved, the number of bonds (or angles) that are observed in the model and the number of bonds (or angles) that are defined in the Chemical Component Dictionary. The Link column lists molecule types, if any, to which the group is linked. The Z score for a bond length (or angle) is the number of standard deviations the observed value is removed from the expected value. A bond length (or angle) with $|Z| > 2$ is considered an outlier worth inspection. RMSZ is the root-mean-square of all Z scores of the bond lengths (or angles).

Mol	Type	Chain	Res	Link	Bond lengths			Bond angles		
					Counts	RMSZ	$\# Z > 2$	Counts	RMSZ	$\# Z > 2$
4	PHD	S	53	4	9,11,12	4.16	1 (11%)	9,15,17	1.79	2 (22%)
4	PHD	R	53	4	9,11,12	4.12	1 (11%)	9,15,17	1.75	2 (22%)

In the following table, the Chirals column lists the number of chiral outliers, the number of chiral centers analysed, the number of these observed in the model and the number defined in the Chemical Component Dictionary. Similar counts are reported in the Torsion and Rings columns. '-' means no outliers of that kind were identified.

Mol	Type	Chain	Res	Link	Chirals	Torsions	Rings
4	PHD	S	53	4	-	4/8/11/13	-
4	PHD	R	53	4	-	4/8/11/13	-

All (2) bond length outliers are listed below:

Mol	Chain	Res	Type	Atoms	Z	Observed(Å)	Ideal(Å)
4	S	53	PHD	P-OD1	12.34	1.82	1.59
4	R	53	PHD	P-OD1	12.23	1.81	1.59

All (4) bond angle outliers are listed below:

Mol	Chain	Res	Type	Atoms	Z	Observed(°)	Ideal(°)
4	S	53	PHD	OD1-P-OP1	-3.76	97.44	109.47
4	R	53	PHD	OD1-P-OP1	-3.74	97.49	109.47
4	R	53	PHD	OP3-P-OP2	2.38	116.74	107.80
4	S	53	PHD	OP3-P-OP2	2.35	116.63	107.80

There are no chirality outliers.

All (8) torsion outliers are listed below:

Mol	Chain	Res	Type	Atoms
4	R	53	PHD	CG-OD1-P-OP1
4	S	53	PHD	CG-OD1-P-OP1
4	R	53	PHD	CA-CB-CG-OD1
4	S	53	PHD	CA-CB-CG-OD1
4	S	53	PHD	CA-CB-CG-OD2
4	R	53	PHD	CA-CB-CG-OD2
4	R	53	PHD	CG-OD1-P-OP2
4	S	53	PHD	CG-OD1-P-OP2

There are no ring outliers.

1 monomer is involved in 1 short contact:

Mol	Chain	Res	Type	Clashes	Symm-Clashes
4	S	53	PHD	1	0

5.5 Carbohydrates [i](#)

There are no oligosaccharides in this entry.

5.6 Ligand geometry [i](#)

There are no ligands in this entry.

5.7 Other polymers [i](#)

There are no such residues in this entry.

5.8 Polymer linkage issues ⓘ

There are no chain breaks in this entry.

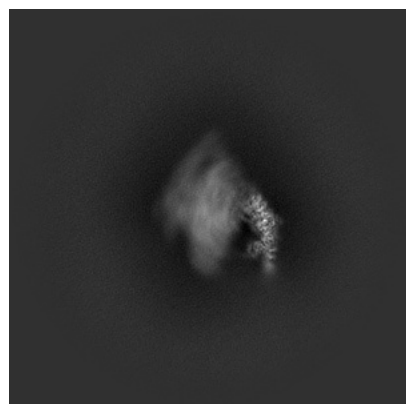
6 Map visualisation [i](#)

This section contains visualisations of the EMDB entry EMD-47222. These allow visual inspection of the internal detail of the map and identification of artifacts.

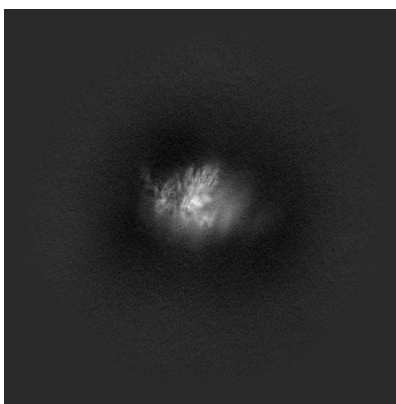
Images derived from a raw map, generated by summing the deposited half-maps, are presented below the corresponding image components of the primary map to allow further visual inspection and comparison with those of the primary map.

6.1 Orthogonal projections [i](#)

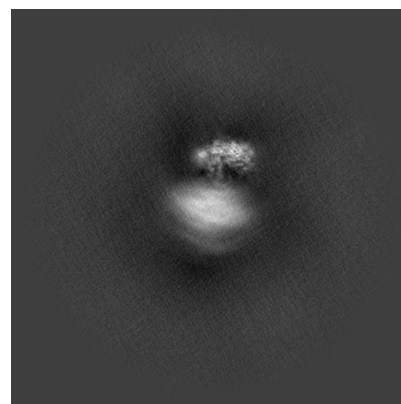
6.1.1 Primary map



X

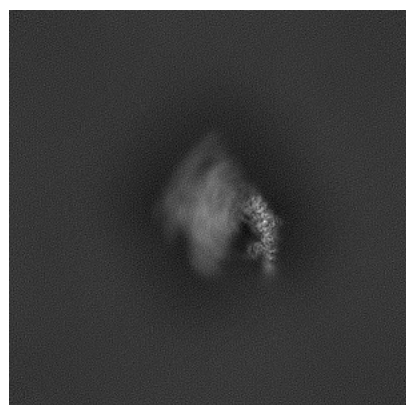


Y

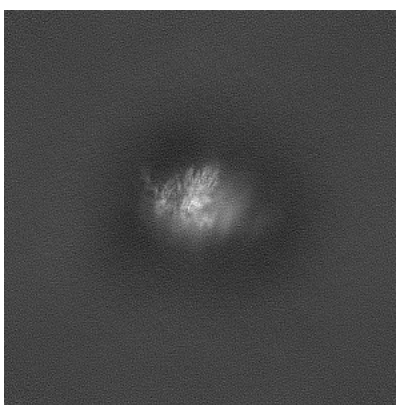


Z

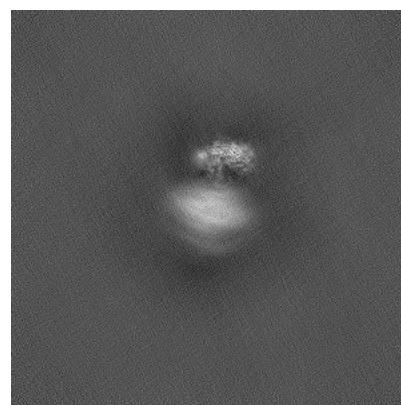
6.1.2 Raw map



X



Y

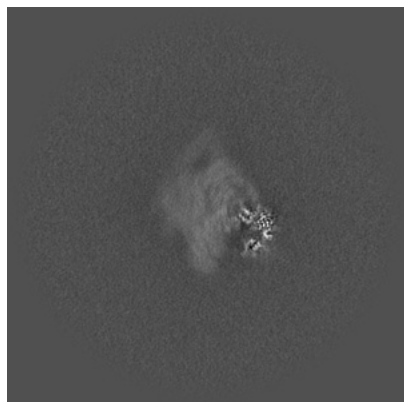


Z

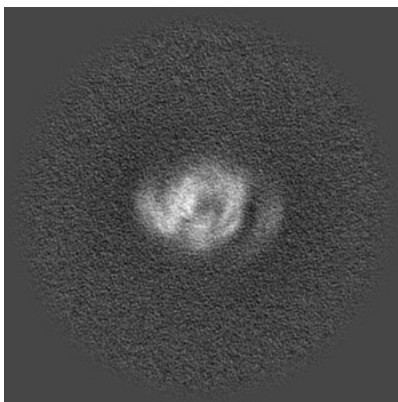
The images above show the map projected in three orthogonal directions.

6.2 Central slices [i](#)

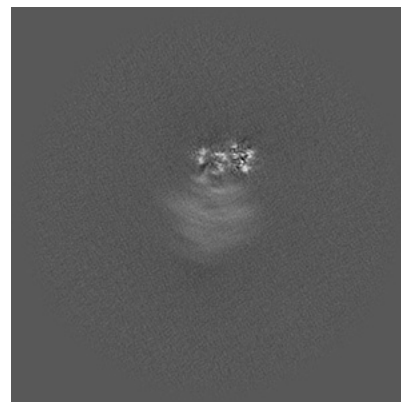
6.2.1 Primary map



X Index: 200



Y Index: 200

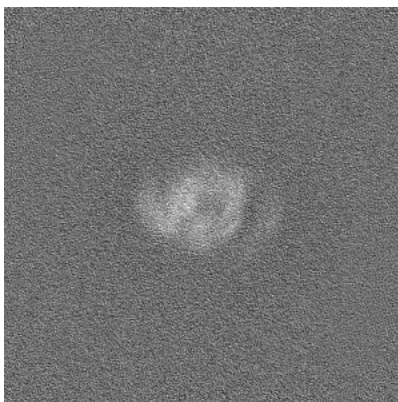


Z Index: 200

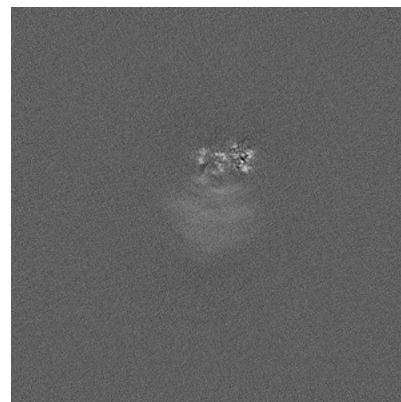
6.2.2 Raw map



X Index: 200



Y Index: 200

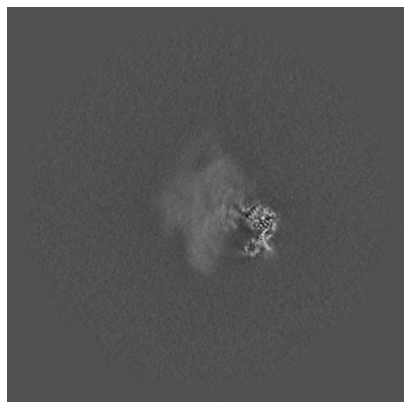


Z Index: 200

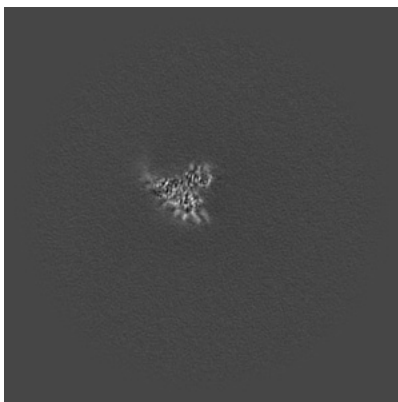
The images above show central slices of the map in three orthogonal directions.

6.3 Largest variance slices [i](#)

6.3.1 Primary map



X Index: 204

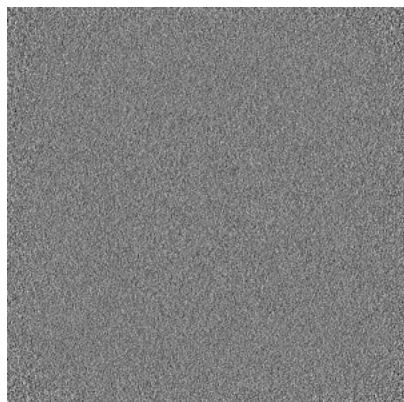


Y Index: 256

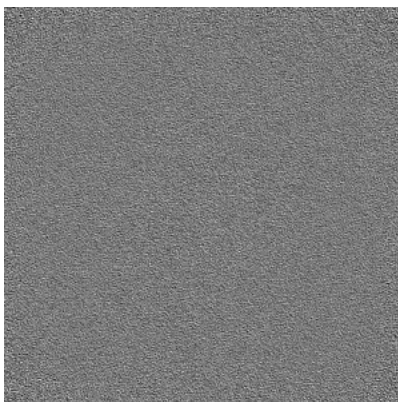


Z Index: 188

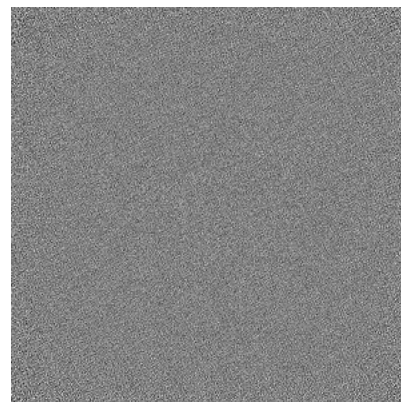
6.3.2 Raw map



X Index: 0



Y Index: 0

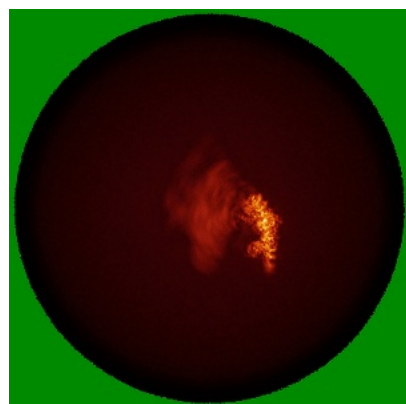


Z Index: 0

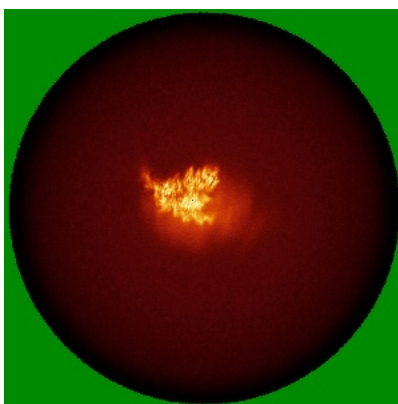
The images above show the largest variance slices of the map in three orthogonal directions.

6.4 Orthogonal standard-deviation projections (False-color) [i](#)

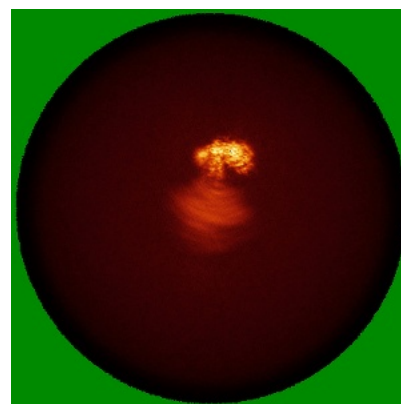
6.4.1 Primary map



X

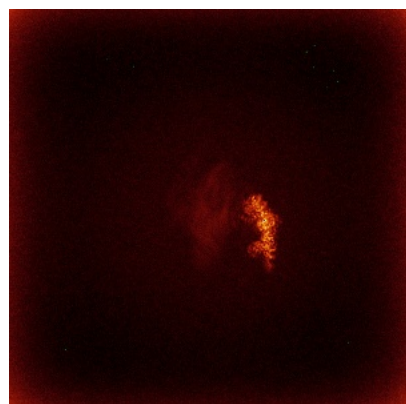


Y

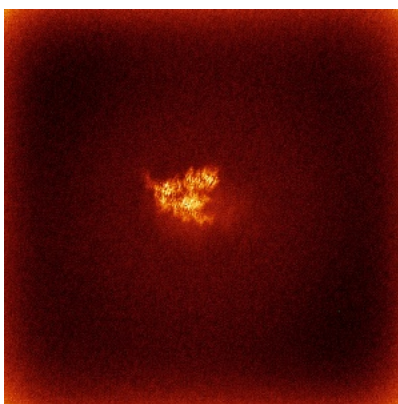


Z

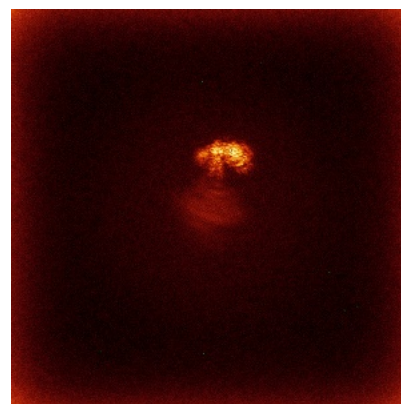
6.4.2 Raw map



X



Y



Z

The images above show the map standard deviation projections with false color in three orthogonal directions. Minimum values are shown in green, max in blue, and dark to light orange shades represent small to large values respectively.

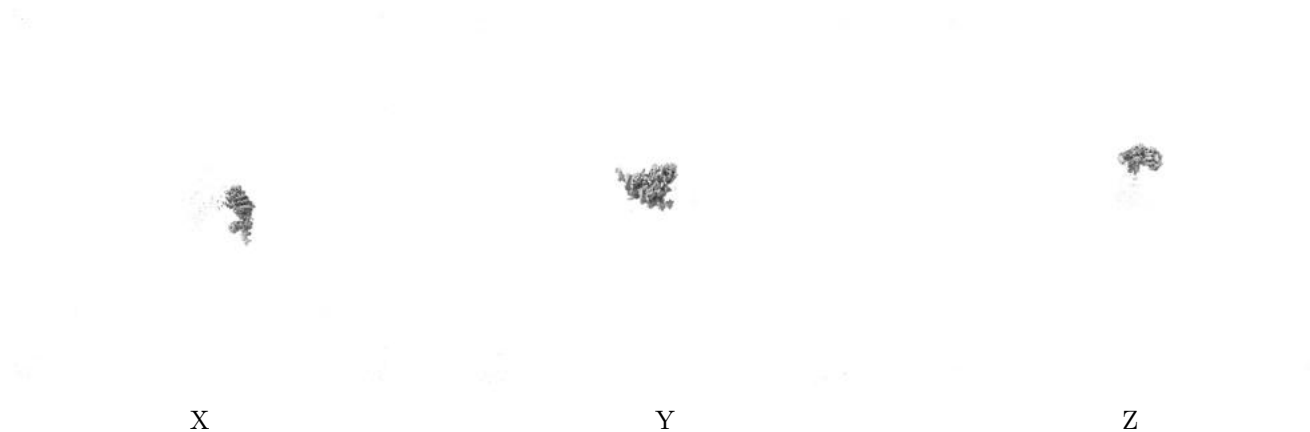
6.5 Orthogonal surface views [i](#)

6.5.1 Primary map



The images above show the 3D surface view of the map at the recommended contour level 0.25. These images, in conjunction with the slice images, may facilitate assessment of whether an appropriate contour level has been provided.

6.5.2 Raw map



These images show the 3D surface of the raw map. The raw map's contour level was selected so that its surface encloses the same volume as the primary map does at its recommended contour level.

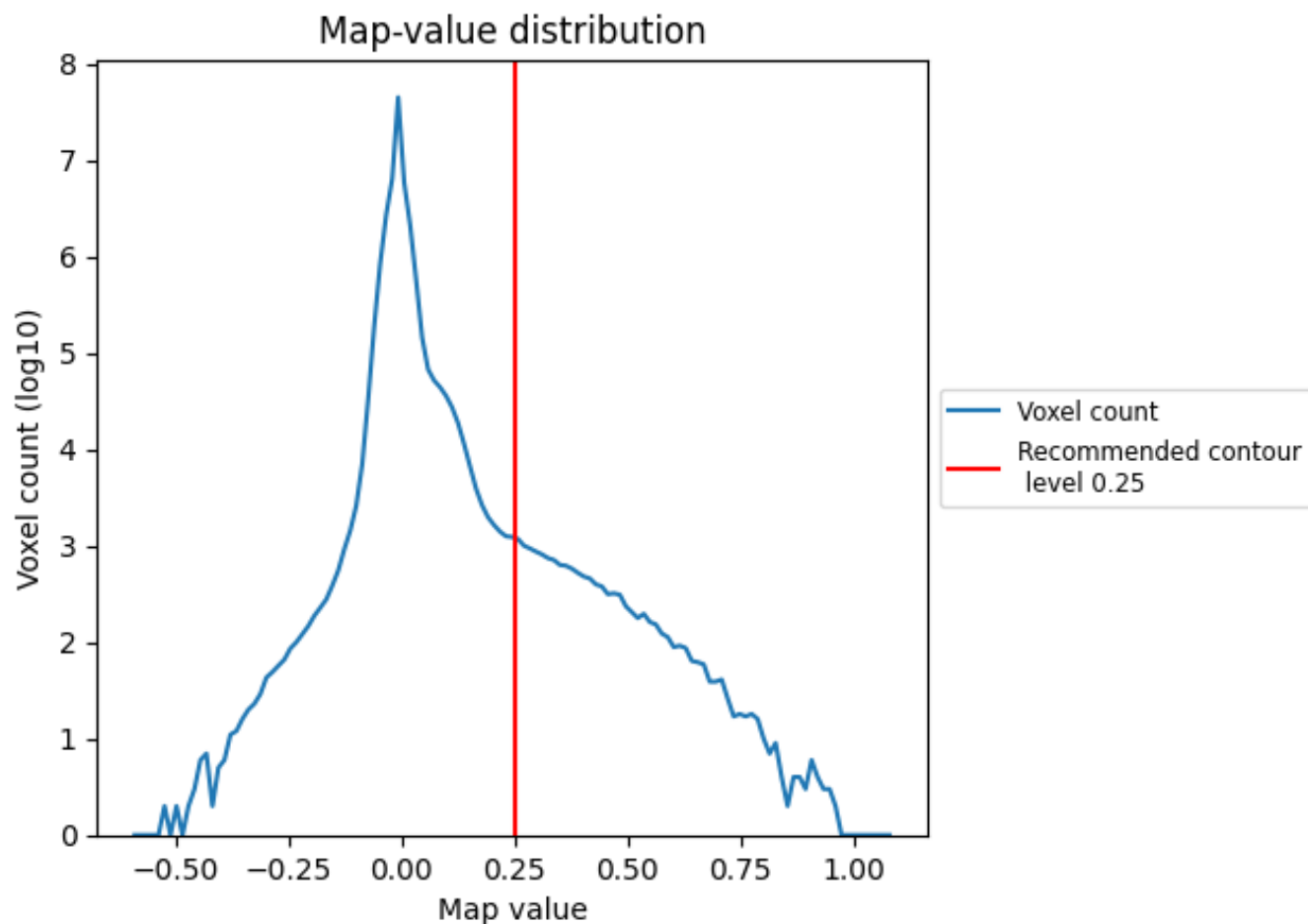
6.6 Mask visualisation [i](#)

This section was not generated. No masks/segmentation were deposited.

7 Map analysis [i](#)

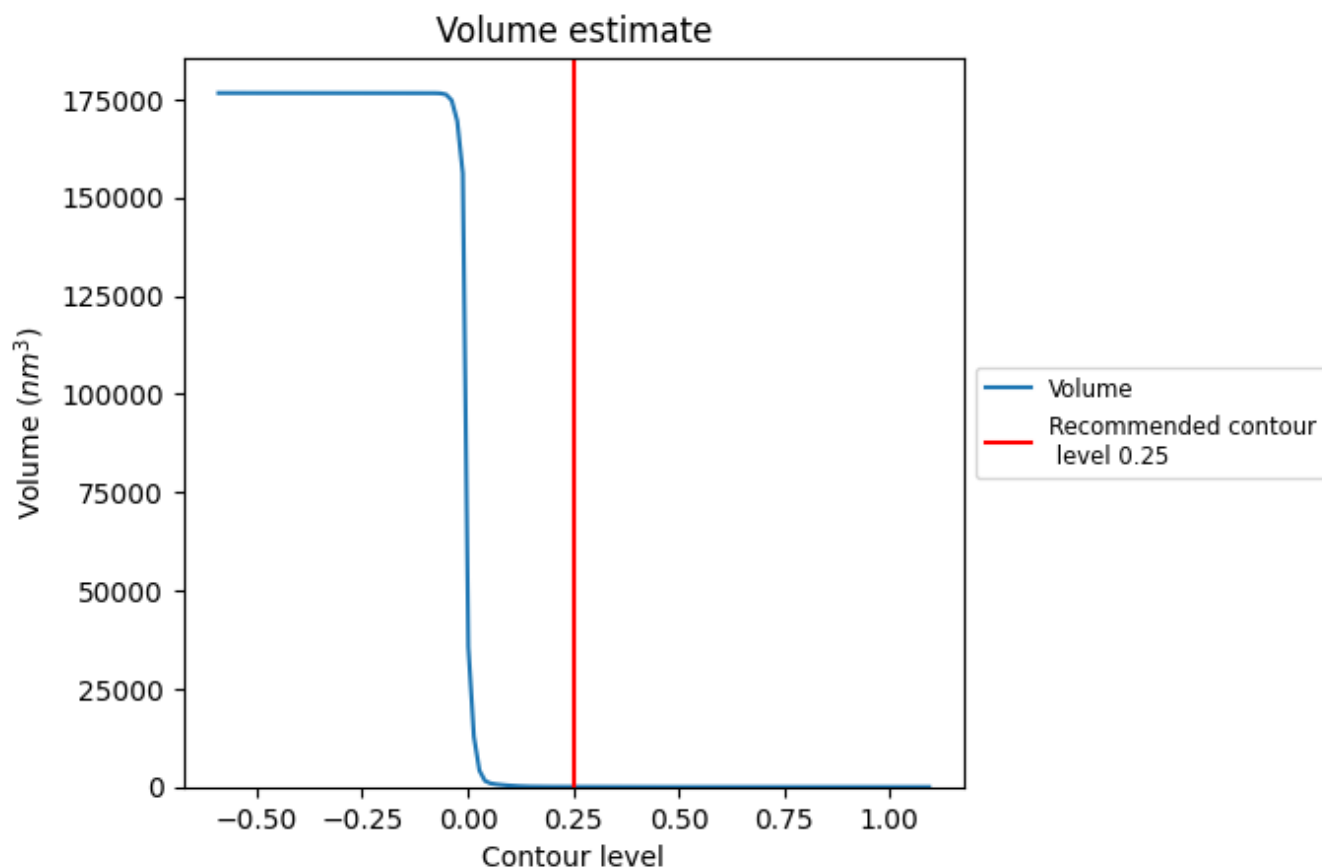
This section contains the results of statistical analysis of the map.

7.1 Map-value distribution [i](#)



The map-value distribution is plotted in 128 intervals along the x-axis. The y-axis is logarithmic. A spike in this graph at zero usually indicates that the volume has been masked.

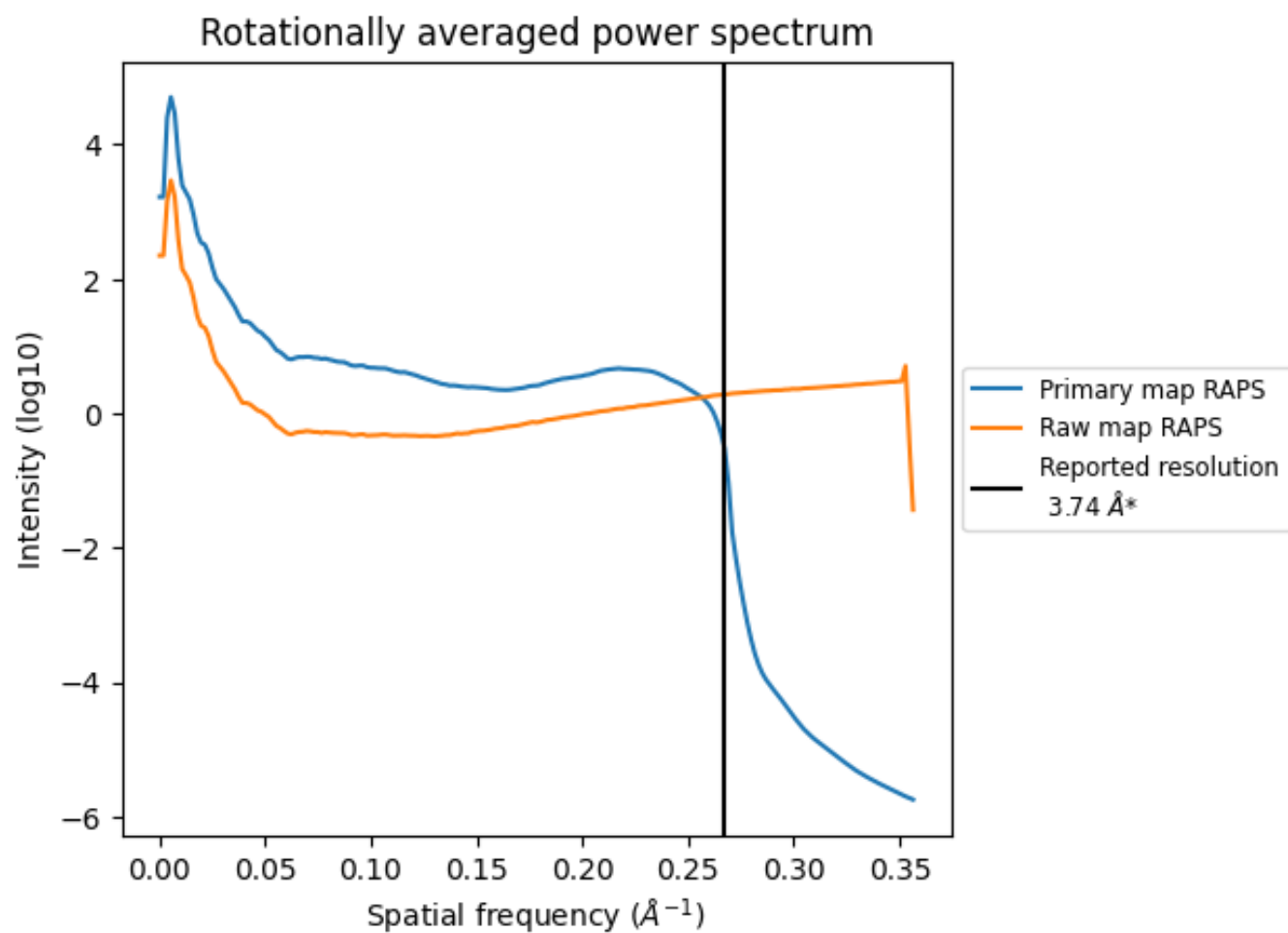
7.2 Volume estimate [i](#)



The volume at the recommended contour level is 39 nm^3 ; this corresponds to an approximate mass of 35 kDa.

The volume estimate graph shows how the enclosed volume varies with the contour level. The recommended contour level is shown as a vertical line and the intersection between the line and the curve gives the volume of the enclosed surface at the given level.

7.3 Rotationally averaged power spectrum ⓘ

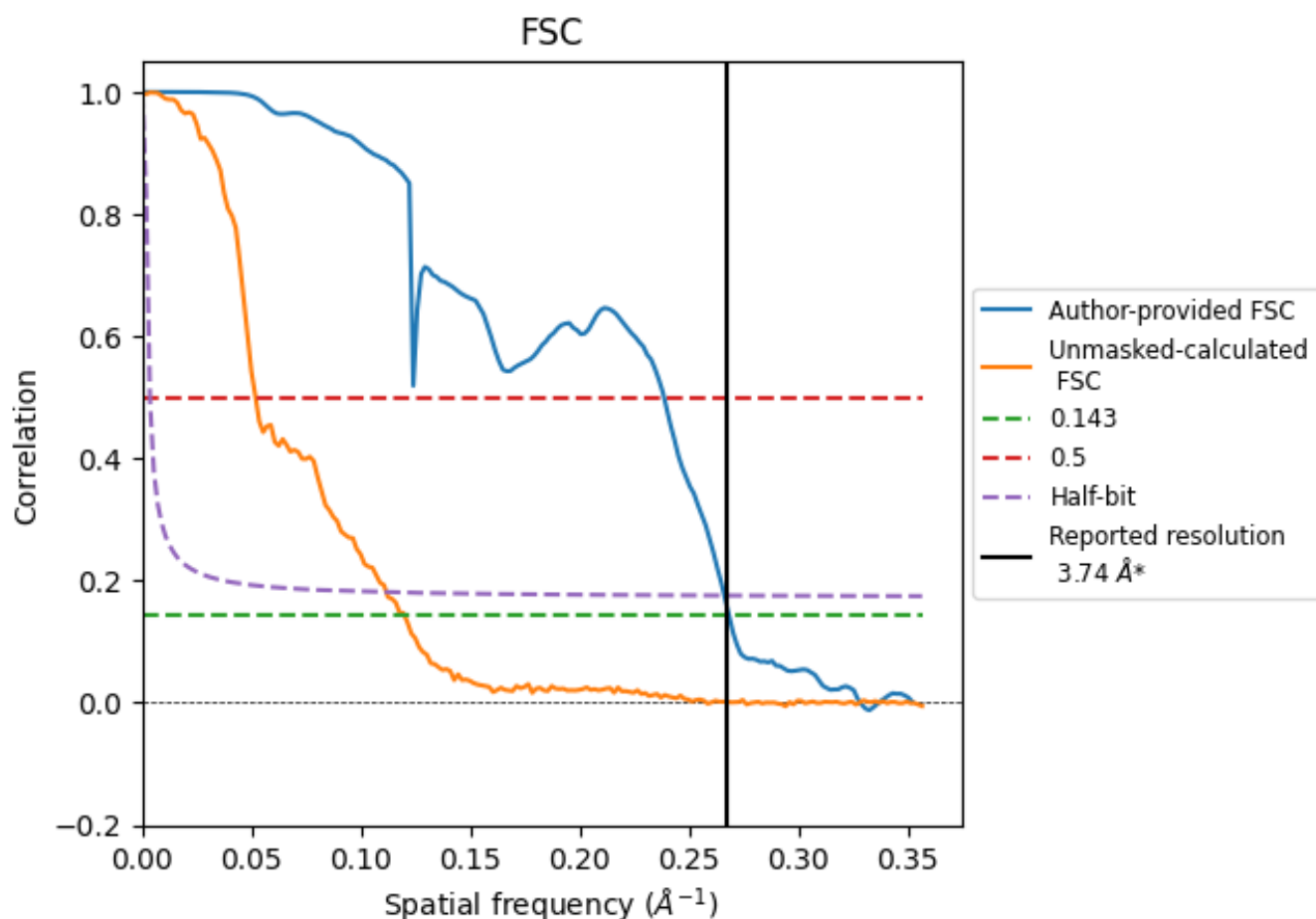


*Reported resolution corresponds to spatial frequency of 0.267 \AA^{-1}

8 Fourier-Shell correlation [i](#)

Fourier-Shell Correlation (FSC) is the most commonly used method to estimate the resolution of single-particle and subtomogram-averaged maps. The shape of the curve depends on the imposed symmetry, mask and whether or not the two 3D reconstructions used were processed from a common reference. The reported resolution is shown as a black line. A curve is displayed for the half-bit criterion in addition to lines showing the 0.143 gold standard cut-off and 0.5 cut-off.

8.1 FSC [i](#)



*Reported resolution corresponds to spatial frequency of 0.267 Å⁻¹

8.2 Resolution estimates [i](#)

Resolution estimate (Å)	Estimation criterion (FSC cut-off)		
	0.143	0.5	Half-bit
Reported by author	3.74	-	-
Author-provided FSC curve	3.73	4.19	3.76
Unmasked-calculated*	8.34	19.31	8.96

*Resolution estimate based on FSC curve calculated by comparison of deposited half-maps. The value from deposited half-maps intersecting FSC 0.143 CUT-OFF 8.34 differs from the reported value 3.74 by more than 10 %

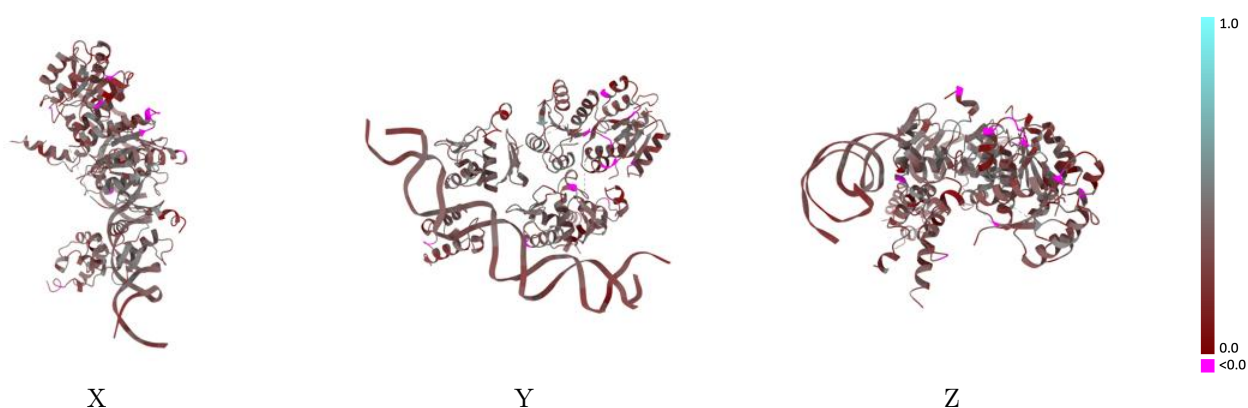
9 Map-model fit [i](#)

This section contains information regarding the fit between EMDB map EMD-47222 and PDB model 9DVT. Per-residue inclusion information can be found in section 3 on page 6.

9.1 Map-model overlay [i](#)

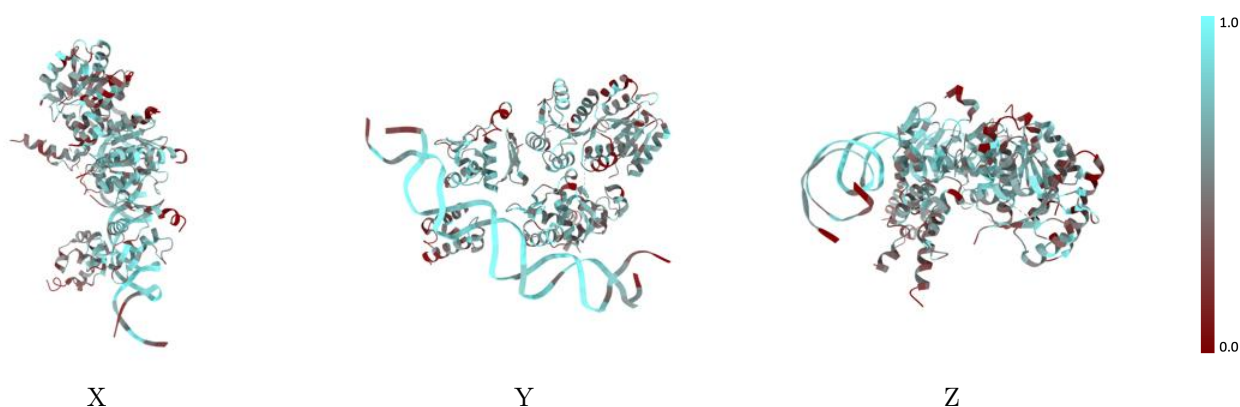
This section was not generated.

9.2 Q-score mapped to coordinate model [i](#)



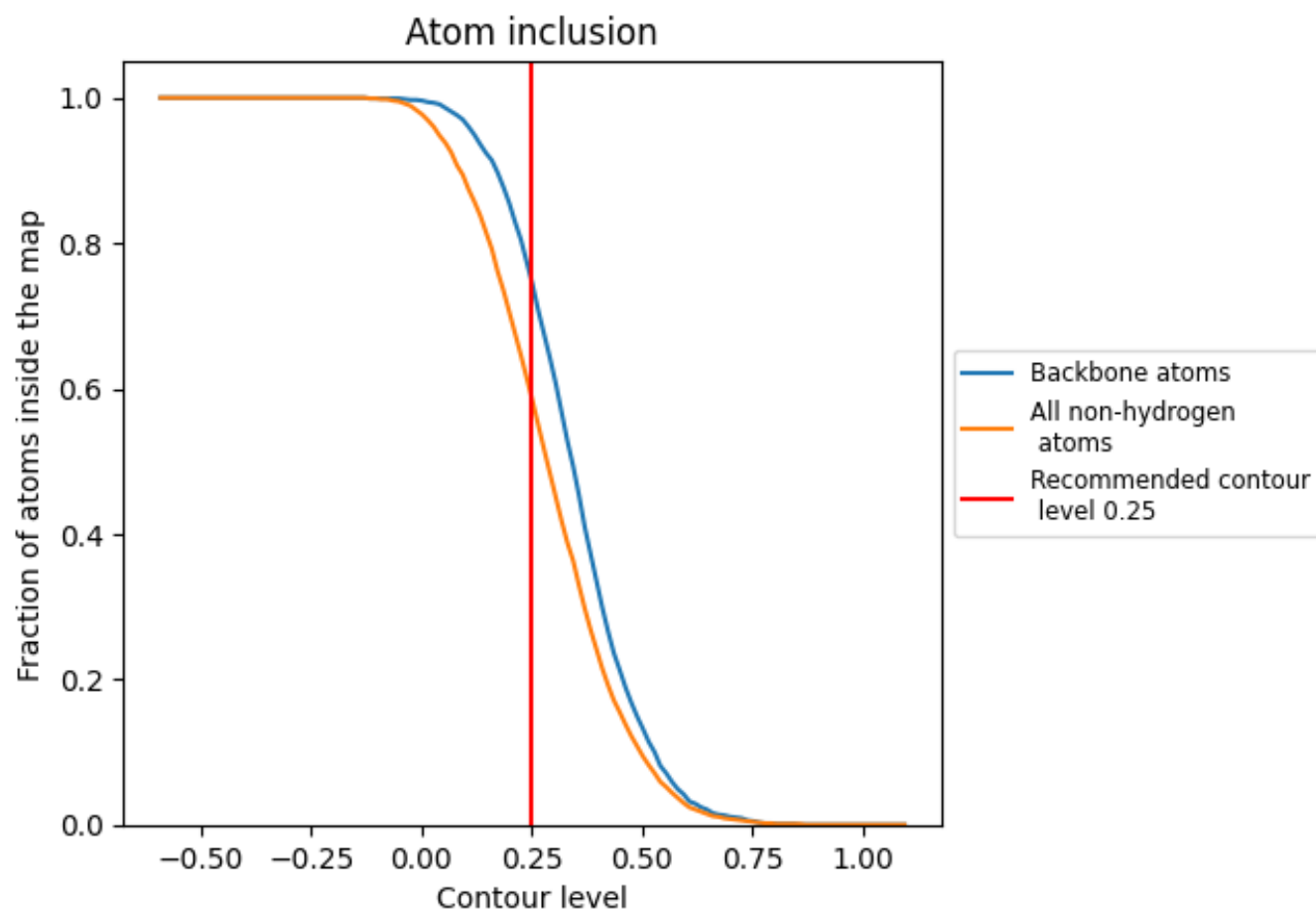
The images above show the model with each residue coloured according to its Q-score. This shows their resolvability in the map with higher Q-score values reflecting better resolvability. Please note: Q-score is calculating the resolvability of atoms, and thus high values are only expected at resolutions at which atoms can be resolved. Low Q-score values may therefore be expected for many entries.

9.3 Atom inclusion mapped to coordinate model [i](#)



The images above show the model with each residue coloured according to its atom inclusion. This shows to what extent they are inside the map at the recommended contour level (0.25).

9.4 Atom inclusion [i](#)



At the recommended contour level, 75% of all backbone atoms, 59% of all non-hydrogen atoms, are inside the map.

9.5 Map-model fit summary ⓘ

The table lists the average atom inclusion at the recommended contour level (0.25) and Q-score for the entire model and for each chain.

Chain	Atom inclusion	Q-score
All	<div></div> 0.5870	<div></div> 0.3170
1	<div></div> 0.7360	<div></div> 0.3160
2	<div></div> 0.7090	<div></div> 0.3000
A	<div></div> 0.4030	<div></div> 0.2830
G	<div></div> 0.4720	<div></div> 0.2760
R	<div></div> 0.5770	<div></div> 0.3420
S	<div></div> 0.5720	<div></div> 0.3210

1.0

0.0

<0.0