



# Full wwPDB X-ray Structure Validation Report ⓘ

Mar 6, 2026 – 11:19 PM UTC

PDB ID : 9D9H / pdb\_00009d9h  
Title : Human Hsp90b nucleotide binding domain in complex with BRI2311  
Authors : Kuntz, D.A.; Prive, G.G.  
Deposited on : 2024-08-21  
Resolution : 1.96 Å(reported)

This is a Full wwPDB X-ray Structure Validation Report for a publicly released PDB entry.

We welcome your comments at [validation@mail.wwpdb.org](mailto:validation@mail.wwpdb.org)

A user guide is available at

<https://www.wwpdb.org/validation/2017/XrayValidationReportHelp>

with specific help available everywhere you see the ⓘ symbol.

The types of validation reports are described at

<http://www.wwpdb.org/validation/2017/FAQs#types>.

---

The following versions of software and data (see [references ⓘ](#)) were used in the production of this report:

MolProbity : 4-5-2 with Phenix2.0  
Mogul : 2022.3.0, CSD as543be (2022)  
Xtriage (Phenix) : 2.0  
EDS : 3.0  
Buster-report : wwPDB partial adaption of 1.1.7 (2018)  
Percentile statistics : 20250101.v01 (using entries in the PDB archive January 1st 2025)  
CCP4 : 9.0.010 (Gargrove)  
Density-Fitness : 1.0.12  
Ideal geometry (proteins) : Engh & Huber (2001)  
Ideal geometry (DNA, RNA) : Parkinson et al. (1996)  
Validation Pipeline (wwPDB-VP) : 2.49

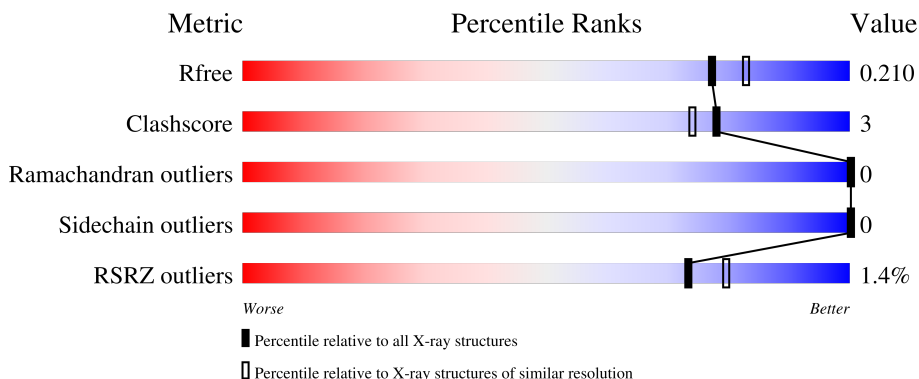
# 1 Overall quality at a glance

The following experimental techniques were used to determine the structure:

## *X-RAY DIFFRACTION*

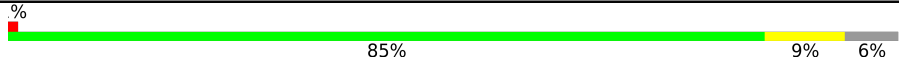
The reported resolution of this entry is 1.96 Å.

Percentile scores (ranging between 0-100) for global validation metrics of the entry are shown in the following graphic. The table shows the number of entries on which the scores are based.



Metric	Whole archive (#Entries)	Similar resolution (#Entries, resolution range(Å))
$R_{free}$	180053	3494 (1.96-1.96)
Clashscore	190562	3612 (1.96-1.96)
Ramachandran outliers	187476	3587 (1.96-1.96)
Sidechain outliers	187428	3587 (1.96-1.96)
RSRZ outliers	180081	3495 (1.96-1.96)

The table below summarises the geometric issues observed across the polymeric chains and their fit to the electron density. The red, orange, yellow and green segments of the lower bar indicate the fraction of residues that contain outliers for  $\geq 3$ , 2, 1 and 0 types of geometric quality criteria respectively. A grey segment represents the fraction of residues that are not modelled. The numeric value for each fraction is indicated below the corresponding segment, with a dot representing fractions  $\leq 5\%$ . The upper red bar (where present) indicates the fraction of residues that have poor fit to the electron density. The numeric value is given above the bar.

Mol	Chain	Length	Quality of chain
1	A	224	

## 2 Entry composition [i](#)

There are 4 unique types of molecules in this entry. The entry contains 3773 atoms, of which 1725 are hydrogens and 0 are deuteriums.

In the tables below, the ZeroOcc column contains the number of atoms modelled with zero occupancy, the AltConf column contains the number of residues with at least one atom in alternate conformation and the Trace column contains the number of residues modelled with at most 2 atoms.

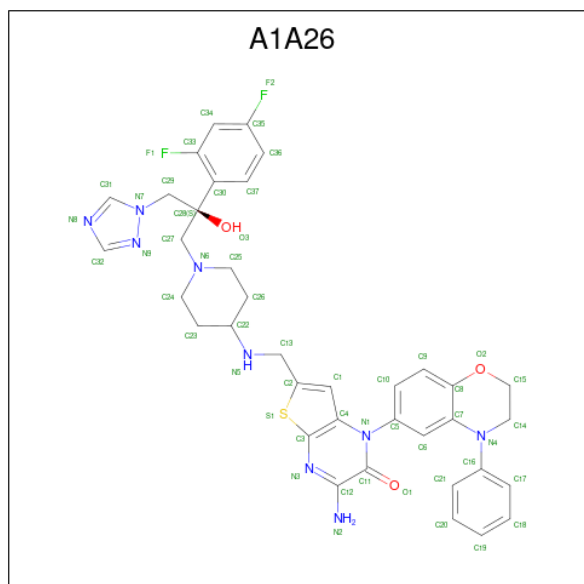
- Molecule 1 is a protein called Heat shock protein HSP 90-beta.

Mol	Chain	Residues	Atoms						ZeroOcc	AltConf	Trace
1	A	211	Total	C	H	N	O	S	0	20	0
			3422	1103	1687	281	345	6			

There is a discrepancy between the modelled and reference sequences:

Chain	Residue	Modelled	Actual	Comment	Reference
A	0	GLY	-	expression tag	UNP P08238

- Molecule 2 is (1P)-3-amino-6-[(1-[(2S)-2-(2,4-difluorophenyl)-2-hydroxy-3-(1H-1,2,4-triazol-1-yl)propyl]piperidin-4-yl)amino)methyl]-1-(4-phenyl-3,4-dihydro-2H-1,4-benzoxazin-6-yl)thieno[2,3-b]pyrazin-2(1H)-one (CCD ID: A1A26) (formula: C<sub>37</sub>H<sub>37</sub>F<sub>2</sub>N<sub>9</sub>O<sub>3</sub>S) (labeled as "Ligand of Interest" by depositor).



Mol	Chain	Residues	Atoms						ZeroOcc	AltConf
2	A	1	Total	C	F	H	N	O	S	
			90	37	2	38	9	3	1	

- Molecule 3 is CHLORIDE ION (CCD ID: CL) (formula: Cl).

Mol	Chain	Residues	Atoms		ZeroOcc	AltConf
3	A	5	Total 5	Cl 5	0	0

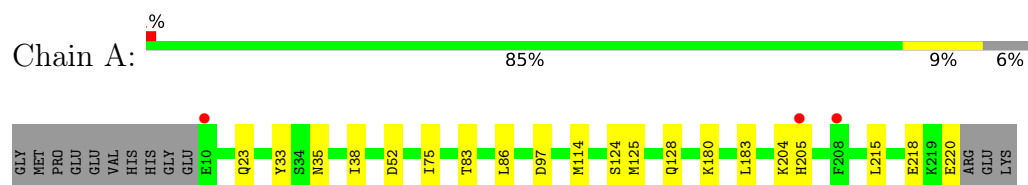
- Molecule 4 is water.

Mol	Chain	Residues	Atoms		ZeroOcc	AltConf
4	A	247	Total 256	O 256	0	11

### 3 Residue-property plots [i](#)

These plots are drawn for all protein, RNA, DNA and oligosaccharide chains in the entry. The first graphic for a chain summarises the proportions of the various outlier classes displayed in the second graphic. The second graphic shows the sequence view annotated by issues in geometry and electron density. Residues are color-coded according to the number of geometric quality criteria for which they contain at least one outlier: green = 0, yellow = 1, orange = 2 and red = 3 or more. A red dot above a residue indicates a poor fit to the electron density ( $RSRZ > 2$ ). Stretches of 2 or more consecutive residues without any outlier are shown as a green connector. Residues present in the sample, but not in the model, are shown in grey.

- Molecule 1: Heat shock protein HSP 90-beta



## 4 Data and refinement statistics

Property	Value	Source
Space group	I 2 2 2	Depositor
Cell constants a, b, c, $\alpha$ , $\beta$ , $\gamma$	67.35Å 89.84Å 97.31Å 90.00° 90.00° 90.00°	Depositor
Resolution (Å)	24.51 – 1.96 24.51 – 1.96	Depositor EDS
% Data completeness (in resolution range)	99.2 (24.51-1.96) 99.2 (24.51-1.96)	Depositor EDS
$R_{merge}$	0.08	Depositor
$R_{sym}$	(Not available)	Depositor
$\langle I/\sigma(I) \rangle$ <sup>1</sup>	1.99 (at 1.96Å)	Xtriage
Refinement program	REFMAC 5.8.0430	Depositor
R, $R_{free}$	0.163 , 0.208 0.165 , 0.210	Depositor DCC
$R_{free}$ test set	1067 reflections (1.66%)	wwPDB-VP
Wilson B-factor (Å <sup>2</sup> )	24.8	Xtriage
Anisotropy	0.185	Xtriage
Bulk solvent $k_{sol}$ (e/Å <sup>3</sup> ), $B_{sol}$ (Å <sup>2</sup> )	0.40 , 47.9	EDS
L-test for twinning <sup>2</sup>	$\langle  L  \rangle = 0.49$ , $\langle L^2 \rangle = 0.32$	Xtriage
Estimated twinning fraction	No twinning to report.	Xtriage
$F_o, F_c$ correlation	0.96	EDS
Total number of atoms	3773	wwPDB-VP
Average B, all atoms (Å <sup>2</sup> )	29.0	wwPDB-VP

Xtriage's analysis on translational NCS is as follows: *The largest off-origin peak in the Patterson function is 6.47% of the height of the origin peak. No significant pseudotranslation is detected.*

<sup>1</sup>Intensities estimated from amplitudes.

<sup>2</sup>Theoretical values of  $\langle |L| \rangle$ ,  $\langle L^2 \rangle$  for acentric reflections are 0.5, 0.333 respectively for untwinned datasets, and 0.375, 0.2 for perfectly twinned datasets.

## 5 Model quality [i](#)

### 5.1 Standard geometry [i](#)

Bond lengths and bond angles in the following residue types are not validated in this section: A1A26, CL

The Z score for a bond length (or angle) is the number of standard deviations the observed value is removed from the expected value. A bond length (or angle) with  $|Z| > 5$  is considered an outlier worth inspection. RMSZ is the root-mean-square of all Z scores of the bond lengths (or angles).

Mol	Chain	Bond lengths		Bond angles	
		RMSZ	$\# Z  > 5$	RMSZ	$\# Z  > 5$
1	A	0.61	0/1839	1.04	2/2481 (0.1%)

There are no bond length outliers.

All (2) bond angle outliers are listed below:

Mol	Chain	Res	Type	Atoms	Z	Observed(°)	Ideal(°)
1	A	52	ASP	CA-CB-CG	6.33	118.92	112.60
1	A	97	ASP	CA-CB-CG	6.22	118.82	112.60

There are no chirality outliers.

There are no planarity outliers.

### 5.2 Too-close contacts [i](#)

In the following table, the Non-H and H(model) columns list the number of non-hydrogen atoms and hydrogen atoms in the chain respectively. The H(added) column lists the number of hydrogen atoms added and optimized by MolProbity. The Clashes column lists the number of clashes within the asymmetric unit, whereas Symm-Clashes lists symmetry-related clashes.

Mol	Chain	Non-H	H(model)	H(added)	Clashes	Symm-Clashes
1	A	1735	1687	1636	10	0
2	A	52	38	0	0	0
3	A	5	0	0	1	0
4	A	256	0	0	0	0
All	All	2048	1725	1636	10	0

The all-atom clashscore is defined as the number of clashes found per 1000 atoms (including hydrogen atoms). The all-atom clashscore for this structure is 3.

All (10) close contacts within the same asymmetric unit are listed below, sorted by their clash magnitude.

Atom-1	Atom-2	Interatomic distance (Å)	Clash overlap (Å)
1:A:125[B]:MET:SD	1:A:128:GLN:NE2	2.57	0.77
1:A:75:ILE:HG12	1:A:86[A]:LEU:CD1	2.35	0.56
1:A:23:GLN:HG2	1:A:114[B]:MET:HE1	1.95	0.48
1:A:215:LEU:O	3:A:304:CL:CL	2.69	0.47
1:A:218:GLU:OE2	1:A:220:GLU:CG	2.63	0.47
1:A:83:THR:HA	1:A:183:LEU:O	2.20	0.42
1:A:38:ILE:HD13	1:A:124:SER:HA	2.01	0.41
1:A:204:LYS:HB3	1:A:205:HIS:HD2	1.86	0.41
1:A:33[B]:TYR:CZ	1:A:35:ASN:HB3	2.57	0.40

There are no symmetry-related clashes.

## 5.3 Torsion angles [i](#)

### 5.3.1 Protein backbone [i](#)

In the following table, the Percentiles column shows the percent Ramachandran outliers of the chain as a percentile score with respect to all X-ray entries followed by that with respect to entries of similar resolution.

The Analysed column shows the number of residues for which the backbone conformation was analysed, and the total number of residues.

Mol	Chain	Analysed	Favoured	Allowed	Outliers	Percentiles	
1	A	229/224 (102%)	221 (96%)	8 (4%)	0	100	100

There are no Ramachandran outliers to report.

### 5.3.2 Protein sidechains [i](#)

In the following table, the Percentiles column shows the percent sidechain outliers of the chain as a percentile score with respect to all X-ray entries followed by that with respect to entries of similar resolution.

The Analysed column shows the number of residues for which the sidechain conformation was analysed, and the total number of residues.

Mol	Chain	Analysed	Rotameric	Outliers	Percentiles	
1	A	196/191 (103%)	196 (100%)	0	100	100



There are no protein residues with a non-rotameric sidechain to report.

Sometimes sidechains can be flipped to improve hydrogen bonding and reduce clashes. All (1) such sidechains are listed below:

Mol	Chain	Res	Type
1	A	30	ASN

### 5.3.3 RNA [i](#)

There are no RNA molecules in this entry.

## 5.4 Non-standard residues in protein, DNA, RNA chains [i](#)

There are no non-standard protein/DNA/RNA residues in this entry.

## 5.5 Carbohydrates [i](#)

There are no oligosaccharides in this entry.

## 5.6 Ligand geometry [i](#)

Of 6 ligands modelled in this entry, 5 are monoatomic - leaving 1 for Mogul analysis.

In the following table, the Counts columns list the number of bonds (or angles) for which Mogul statistics could be retrieved, the number of bonds (or angles) that are observed in the model and the number of bonds (or angles) that are defined in the Chemical Component Dictionary. The Link column lists molecule types, if any, to which the group is linked. The Z score for a bond length (or angle) is the number of standard deviations the observed value is removed from the expected value. A bond length (or angle) with  $|Z| > 2$  is considered an outlier worth inspection. RMSZ is the root-mean-square of all Z scores of the bond lengths (or angles).

Mol	Type	Chain	Res	Link	Bond lengths			Bond angles		
					Counts	RMSZ	$\# Z  > 2$	Counts	RMSZ	$\# Z  > 2$
2	A1A26	A	301	-	58,59,59	3.88	27 (46%)	78,86,86	2.02	26 (33%)

In the following table, the Chirals column lists the number of chiral outliers, the number of chiral centers analysed, the number of these observed in the model and the number defined in the Chemical Component Dictionary. Similar counts are reported in the Torsion and Rings columns. '-' means no outliers of that kind were identified.

Mol	Type	Chain	Res	Link	Chirals	Torsions	Rings
2	A1A26	A	301	-	-	1/29/49/49	0/8/8/8

All (27) bond length outliers are listed below:

Mol	Chain	Res	Type	Atoms	Z	Observed(Å)	Ideal(Å)
2	A	301	A1A26	C30-C33	11.40	1.54	1.39
2	A	301	A1A26	C37-C36	8.88	1.53	1.38
2	A	301	A1A26	C18-C17	7.78	1.52	1.38
2	A	301	A1A26	O2-C8	7.51	1.46	1.37
2	A	301	A1A26	C10-C5	7.23	1.53	1.39
2	A	301	A1A26	C34-C35	7.21	1.49	1.37
2	A	301	A1A26	C6-C7	6.47	1.50	1.39
2	A	301	A1A26	C20-C19	5.94	1.51	1.38
2	A	301	A1A26	C21-C16	5.88	1.50	1.39
2	A	301	A1A26	O1-C11	5.46	1.34	1.23
2	A	301	A1A26	C17-C16	-5.36	1.29	1.39
2	A	301	A1A26	C9-C8	5.04	1.50	1.39
2	A	301	A1A26	C11-N1	-4.88	1.32	1.42
2	A	301	A1A26	C20-C21	-4.81	1.30	1.38
2	A	301	A1A26	C37-C30	-4.61	1.33	1.39
2	A	301	A1A26	C19-C18	-4.58	1.28	1.38
2	A	301	A1A26	C6-C5	-4.42	1.31	1.39
2	A	301	A1A26	C32-N9	4.10	1.39	1.32
2	A	301	A1A26	N7-N9	3.82	1.43	1.36
2	A	301	A1A26	C14-N4	-3.45	1.41	1.46
2	A	301	A1A26	O2-C15	-3.43	1.35	1.43
2	A	301	A1A26	C34-C33	-3.37	1.31	1.37
2	A	301	A1A26	C11-C12	-3.36	1.44	1.48
2	A	301	A1A26	C31-N7	2.83	1.38	1.33
2	A	301	A1A26	C7-C8	-2.81	1.35	1.40
2	A	301	A1A26	C12-N3	-2.80	1.29	1.34
2	A	301	A1A26	C13-N5	-2.73	1.43	1.46

All (26) bond angle outliers are listed below:

Mol	Chain	Res	Type	Atoms	Z	Observed(°)	Ideal(°)
2	A	301	A1A26	C28-C30-C33	-5.17	118.25	122.83
2	A	301	A1A26	C2-S1-C3	4.61	93.77	91.35
2	A	301	A1A26	C10-C5-N1	-4.22	114.61	119.65
2	A	301	A1A26	O3-C28-C29	4.12	117.73	108.18
2	A	301	A1A26	C15-O2-C8	-3.62	107.31	113.67
2	A	301	A1A26	C37-C30-C33	3.54	121.27	116.28
2	A	301	A1A26	O2-C15-C14	3.51	122.80	112.42
2	A	301	A1A26	S1-C3-N3	3.44	124.42	121.44
2	A	301	A1A26	C2-C13-N5	-3.06	104.01	112.06
2	A	301	A1A26	C29-C28-C27	-3.02	102.83	109.06
2	A	301	A1A26	C5-N1-C11	3.00	121.08	116.57

*Continued on next page...*

*Continued from previous page...*

Mol	Chain	Res	Type	Atoms	Z	Observed(°)	Ideal(°)
2	A	301	A1A26	C12-N3-C3	-2.98	111.75	116.07
2	A	301	A1A26	C29-N7-N9	2.93	125.52	121.25
2	A	301	A1A26	C31-N8-C32	2.85	110.57	102.85
2	A	301	A1A26	F2-C35-C34	-2.83	114.25	118.28
2	A	301	A1A26	C23-C24-N6	-2.79	106.56	111.08
2	A	301	A1A26	F2-C35-C36	2.70	122.87	118.55
2	A	301	A1A26	C36-C37-C30	-2.63	117.16	122.02
2	A	301	A1A26	C24-C23-C22	-2.63	106.52	110.67
2	A	301	A1A26	C28-C29-N7	2.57	115.81	112.34
2	A	301	A1A26	C10-C5-C6	2.42	123.93	119.12
2	A	301	A1A26	N9-C32-N8	-2.37	108.14	114.90
2	A	301	A1A26	C4-N1-C11	-2.36	120.06	123.17
2	A	301	A1A26	C34-C33-C30	-2.21	121.47	123.88
2	A	301	A1A26	C1-C4-N1	2.13	130.20	126.07
2	A	301	A1A26	C29-C28-C30	-2.04	105.69	110.83

There are no chirality outliers.

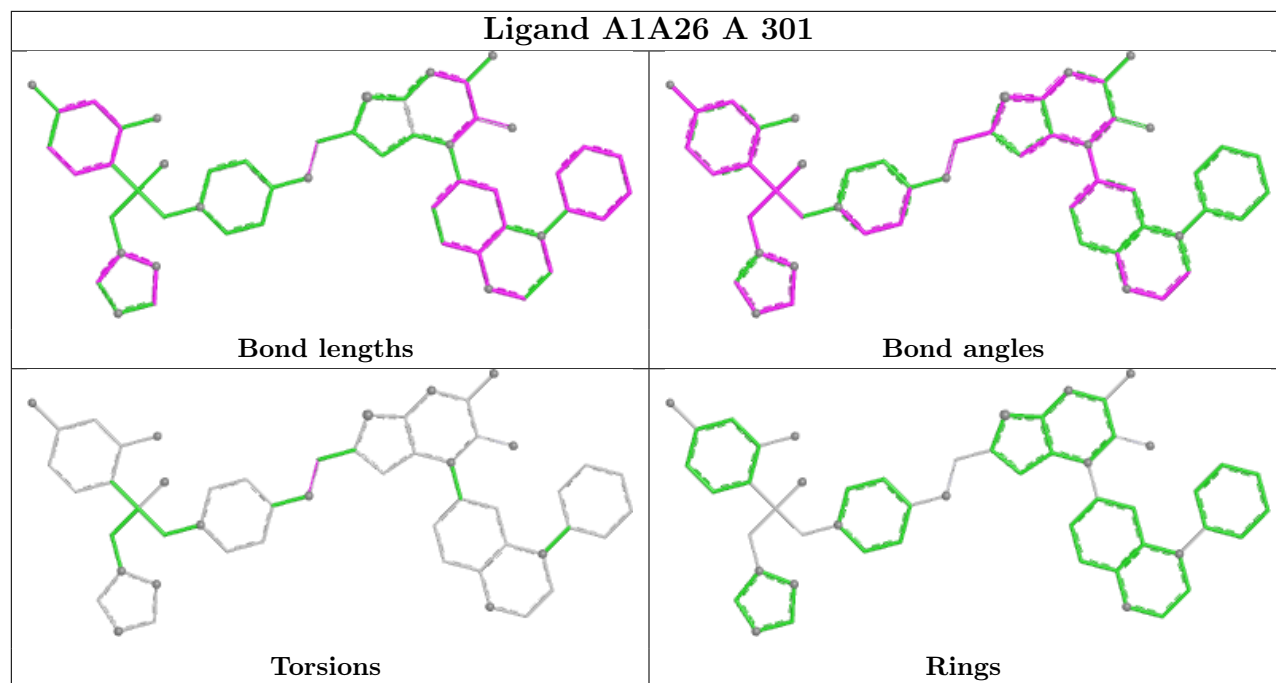
All (1) torsion outliers are listed below:

Mol	Chain	Res	Type	Atoms
2	A	301	A1A26	C2-C13-N5-C22

There are no ring outliers.

No monomer is involved in short contacts.

The following is a two-dimensional graphical depiction of Mogul quality analysis of bond lengths, bond angles, torsion angles, and ring geometry for all instances of the Ligand of Interest. In addition, ligands with molecular weight > 250 and outliers as shown on the validation Tables will also be included. For torsion angles, if less than 5% of the Mogul distribution of torsion angles is within 10 degrees of the torsion angle in question, then that torsion angle is considered an outlier. Any bond that is central to one or more torsion angles identified as an outlier by Mogul will be highlighted in the graph. For rings, the root-mean-square deviation (RMSD) between the ring in question and similar rings identified by Mogul is calculated over all ring torsion angles. If the average RMSD is greater than 60 degrees and the minimal RMSD between the ring in question and any Mogul-identified rings is also greater than 60 degrees, then that ring is considered an outlier. The outliers are highlighted in purple. The color gray indicates Mogul did not find sufficient equivalents in the CSD to analyse the geometry.



## 5.7 Other polymers [i](#)

There are no such residues in this entry.

## 5.8 Polymer linkage issues [i](#)

There are no chain breaks in this entry.

## 6 Fit of model and data [i](#)

### 6.1 Protein, DNA and RNA chains [i](#)

In the following table, the column labelled ‘#RSRZ> 2’ contains the number (and percentage) of RSRZ outliers, followed by percent RSRZ outliers for the chain as percentile scores relative to all X-ray entries and entries of similar resolution. The OWAB column contains the minimum, median, 95<sup>th</sup> percentile and maximum values of the occupancy-weighted average B-factor per residue. The column labelled ‘Q< 0.9’ lists the number of (and percentage) of residues with an average occupancy less than 0.9.

Mol	Chain	Analysed	<RSRZ>	#RSRZ>2	OWAB(Å <sup>2</sup> )	Q<0.9
1	A	211/224 (94%)	-0.48	3 (1%) 73 79	9, 25, 52, 91	10 (4%)

All (3) RSRZ outliers are listed below:

Mol	Chain	Res	Type	RSRZ
1	A	208	PHE	2.6
1	A	205	HIS	2.2
1	A	10	GLU	2.0

### 6.2 Non-standard residues in protein, DNA, RNA chains [i](#)

There are no non-standard protein/DNA/RNA residues in this entry.

### 6.3 Carbohydrates [i](#)

There are no oligosaccharides in this entry.

### 6.4 Ligands [i](#)

In the following table, the Atoms column lists the number of modelled atoms in the group and the number defined in the chemical component dictionary. The B-factors column lists the minimum, median, 95<sup>th</sup> percentile and maximum values of B factors of atoms in the group. The column labelled ‘Q< 0.9’ lists the number of atoms with occupancy less than 0.9.

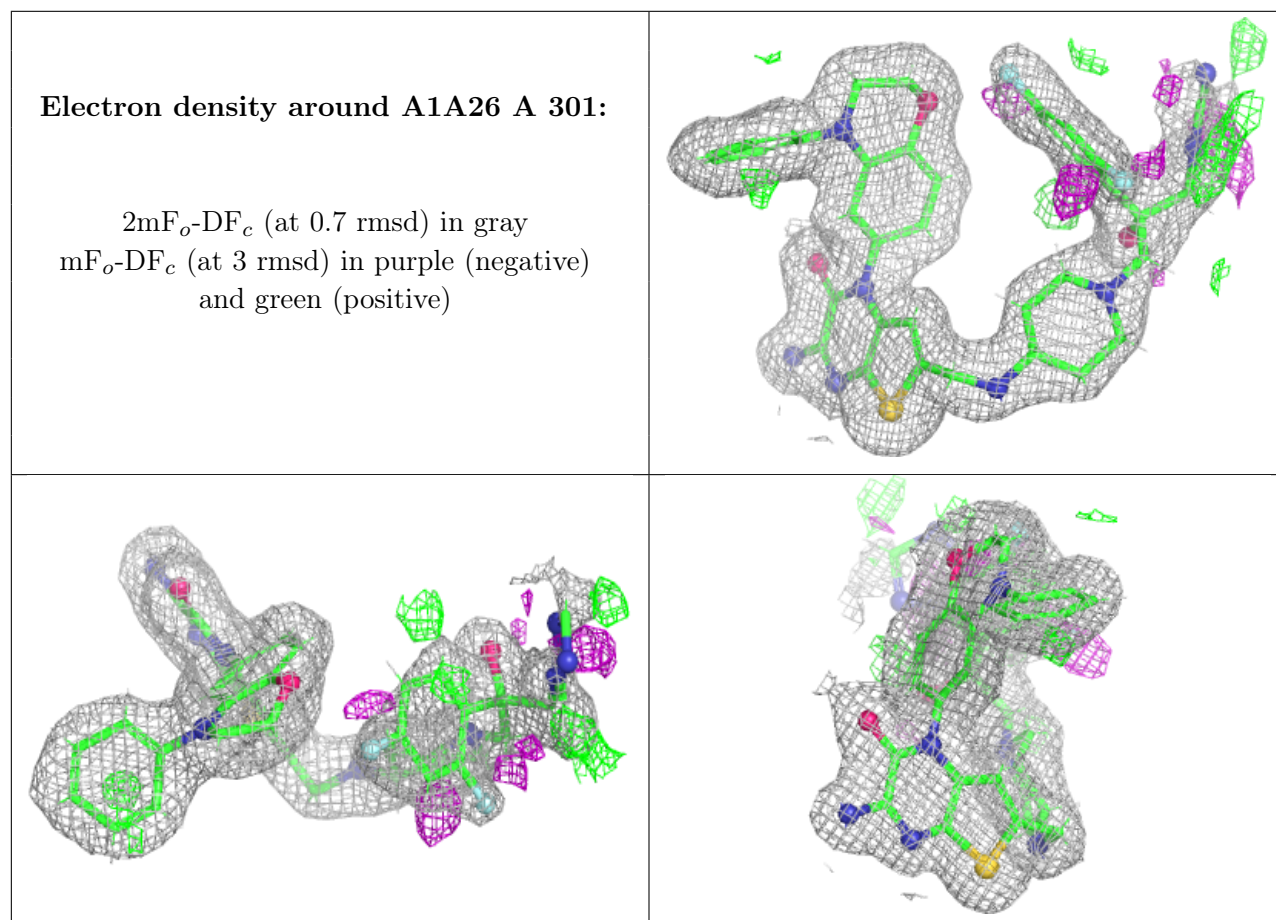
Mol	Type	Chain	Res	Atoms	RSCC	RSR	B-factors(Å <sup>2</sup> )	Q<0.9
3	CL	A	306	1/1	0.91	0.13	59,59,59,59	0
3	CL	A	305	1/1	0.97	0.15	53,53,53,53	0
2	A1A26	A	301	52/52	0.97	0.09	16,28,74,82	0
3	CL	A	304	1/1	0.98	0.17	41,41,41,41	0

*Continued on next page...*

*Continued from previous page...*

Mol	Type	Chain	Res	Atoms	RSCC	RSR	B-factors( $\text{\AA}^2$ )	Q<0.9
3	CL	A	303	1/1	0.99	0.03	28,28,28,28	0
3	CL	A	302	1/1	0.99	0.07	36,36,36,36	0

The following is a graphical depiction of the model fit to experimental electron density of all instances of the Ligand of Interest. In addition, ligands with molecular weight > 250 and outliers as shown on the geometry validation Tables will also be included. Each fit is shown from different orientation to approximate a three-dimensional view.



## 6.5 Other polymers [i](#)

There are no such residues in this entry.