



Full wwPDB X-ray Structure Validation Report ⓘ

Mar 6, 2026 – 05:39 PM UTC

PDB ID : 9D41 / pdb_00009d41
Title : Crystal structure of N-terminal domain of Borealin (20-88) in complex with synthetic antibody fragment
Authors : Filippova, E.V.; Hou, J.; Mukherjee, S.; Kossiakoff, A.A.
Deposited on : 2024-08-12
Resolution : 1.84 Å(reported)

This is a Full wwPDB X-ray Structure Validation Report for a publicly released PDB entry.

We welcome your comments at validation@mail.wwpdb.org

A user guide is available at

<https://www.wwpdb.org/validation/2017/XrayValidationReportHelp>

with specific help available everywhere you see the ⓘ symbol.

The types of validation reports are described at

<http://www.wwpdb.org/validation/2017/FAQs#types>.

The following versions of software and data (see [references ⓘ](#)) were used in the production of this report:

MolProbity	:	4-5-2 with Phenix2.0
Mogul	:	2022.3.0, CSD as543be (2022)
Xtriage (Phenix)	:	2.0
EDS	:	3.0
Percentile statistics	:	20250101.v01 (using entries in the PDB archive January 1st 2025)
CCP4	:	9.0.010 (Gargrove)
Density-Fitness	:	1.0.12
Ideal geometry (proteins)	:	Engh & Huber (2001)
Ideal geometry (DNA, RNA)	:	Parkinson et al. (1996)
Validation Pipeline (wwPDB-VP)	:	2.49

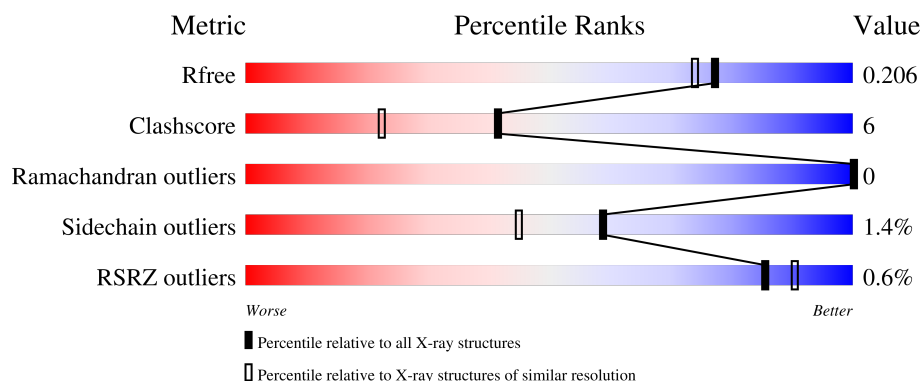
1 Overall quality at a glance

The following experimental techniques were used to determine the structure:

X-RAY DIFFRACTION

The reported resolution of this entry is 1.84 Å.

Percentile scores (ranging between 0-100) for global validation metrics of the entry are shown in the following graphic. The table shows the number of entries on which the scores are based.



Metric	Whole archive (#Entries)	Similar resolution (#Entries, resolution range(Å))
R_{free}	180053	1296 (1.84-1.84)
Clashscore	190562	1329 (1.84-1.84)
Ramachandran outliers	187476	1318 (1.84-1.84)
Sidechain outliers	187428	1318 (1.84-1.84)
RSRZ outliers	180081	1296 (1.84-1.84)

The table below summarises the geometric issues observed across the polymeric chains and their fit to the electron density. The red, orange, yellow and green segments of the lower bar indicate the fraction of residues that contain outliers for ≥ 3 , 2, 1 and 0 types of geometric quality criteria respectively. A grey segment represents the fraction of residues that are not modelled. The numeric value for each fraction is indicated below the corresponding segment, with a dot representing fractions $\leq 5\%$. The upper red bar (where present) indicates the fraction of residues that have poor fit to the electron density. The numeric value is given above the bar.

Mol	Chain	Length	Quality of chain
1	A	69	
2	H	233	
3	L	213	

2 Entry composition [i](#)

There are 6 unique types of molecules in this entry. The entry contains 4287 atoms, of which 0 are hydrogens and 0 are deuteriums.

In the tables below, the ZeroOcc column contains the number of atoms modelled with zero occupancy, the AltConf column contains the number of residues with at least one atom in alternate conformation and the Trace column contains the number of residues modelled with at most 2 atoms.

- Molecule 1 is a protein called Borealin.

Mol	Chain	Residues	Atoms					ZeroOcc	AltConf	Trace
1	A	55	Total	C	N	O	S	0	0	0
			468	298	82	87	1			

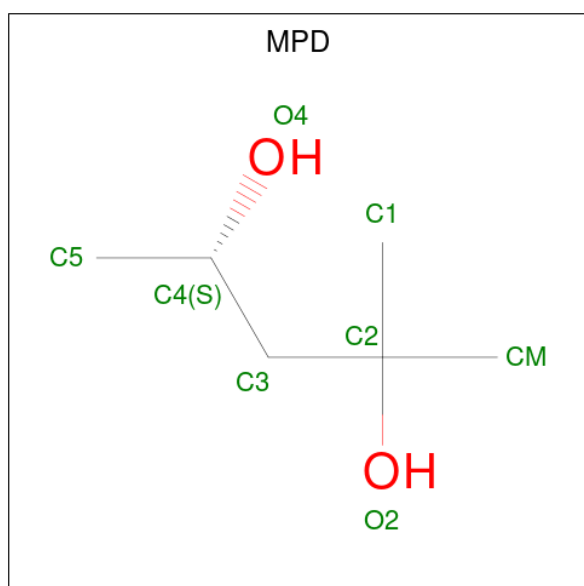
- Molecule 2 is a protein called Fab Heavy Chain.

Mol	Chain	Residues	Atoms					ZeroOcc	AltConf	Trace
2	H	224	Total	C	N	O	S	0	4	0
			1737	1111	286	335	5			

- Molecule 3 is a protein called Fab Light Chain.

Mol	Chain	Residues	Atoms					ZeroOcc	AltConf	Trace
3	L	212	Total	C	N	O	S	0	1	0
			1637	1026	273	333	5			

- Molecule 4 is (4S)-2-METHYL-2,4-PENTANEDIOL (CCD ID: MPD) (formula: C₆H₁₄O₂).



Mol	Chain	Residues	Atoms	ZeroOcc	AltConf
4	A	1	Total C O 8 6 2	0	0
4	A	1	Total C O 8 6 2	0	0
4	H	1	Total C O 8 6 2	0	0
4	H	1	Total C O 8 6 2	0	0
4	H	1	Total C O 8 6 2	0	0
4	H	1	Total C O 8 6 2	0	0
4	L	1	Total C O 8 6 2	0	0
4	L	1	Total C O 8 6 2	0	0
4	L	1	Total C O 8 6 2	0	0
4	L	1	Total C O 8 6 2	0	0

- Molecule 5 is CHLORIDE ION (CCD ID: CL) (formula: Cl).

Mol	Chain	Residues	Atoms	ZeroOcc	AltConf
5	H	1	Total Cl 1 1	0	0

- Molecule 6 is water.

Mol	Chain	Residues	Atoms	ZeroOcc	AltConf
6	A	17	Total O 17 17	0	0
6	H	171	Total O 172 172	0	1
6	L	175	Total O 175 175	0	0

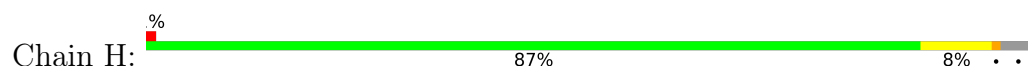
3 Residue-property plots [i](#)

These plots are drawn for all protein, RNA, DNA and oligosaccharide chains in the entry. The first graphic for a chain summarises the proportions of the various outlier classes displayed in the second graphic. The second graphic shows the sequence view annotated by issues in geometry and electron density. Residues are color-coded according to the number of geometric quality criteria for which they contain at least one outlier: green = 0, yellow = 1, orange = 2 and red = 3 or more. A red dot above a residue indicates a poor fit to the electron density ($RSRZ > 2$). Stretches of 2 or more consecutive residues without any outlier are shown as a green connector. Residues present in the sample, but not in the model, are shown in grey.

- Molecule 1: Borealin



- Molecule 2: Fab Heavy Chain



- Molecule 3: Fab Light Chain



4 Data and refinement statistics

Property	Value	Source
Space group	P 32 2 1	Depositor
Cell constants a, b, c, α , β , γ	72.43Å 72.43Å 243.13Å 90.00° 90.00° 120.00°	Depositor
Resolution (Å)	34.06 – 1.84 34.06 – 1.84	Depositor EDS
% Data completeness (in resolution range)	98.8 (34.06-1.84) 98.8 (34.06-1.84)	Depositor EDS
R_{merge}	(Not available)	Depositor
R_{sym}	(Not available)	Depositor
$\langle I/\sigma(I) \rangle$ ¹	1.21 (at 1.84Å)	Xtriage
Refinement program	REFMAC 5.8.0258	Depositor
R, R_{free}	0.155 , 0.197 0.167 , 0.206	Depositor DCC
R_{free} test set	3300 reflections (5.07%)	wwPDB-VP
Wilson B-factor (Å ²)	36.6	Xtriage
Anisotropy	0.314	Xtriage
Bulk solvent k_{sol} (e/Å ³), B_{sol} (Å ²)	0.33 , 56.9	EDS
L-test for twinning ²	$\langle L \rangle = 0.51$, $\langle L^2 \rangle = 0.35$	Xtriage
Estimated twinning fraction	0.016 for -h,-k,l	Xtriage
F_o, F_c correlation	0.98	EDS
Total number of atoms	4287	wwPDB-VP
Average B, all atoms (Å ²)	49.0	wwPDB-VP

Xtriage's analysis on translational NCS is as follows: *The largest off-origin peak in the Patterson function is 4.58% of the height of the origin peak. No significant pseudotranslation is detected.*

¹Intensities estimated from amplitudes.

²Theoretical values of $\langle |L| \rangle$, $\langle L^2 \rangle$ for acentric reflections are 0.5, 0.333 respectively for untwinned datasets, and 0.375, 0.2 for perfectly twinned datasets.

5 Model quality [i](#)

5.1 Standard geometry [i](#)

Bond lengths and bond angles in the following residue types are not validated in this section: CL, MPD

The Z score for a bond length (or angle) is the number of standard deviations the observed value is removed from the expected value. A bond length (or angle) with $|Z| > 5$ is considered an outlier worth inspection. RMSZ is the root-mean-square of all Z scores of the bond lengths (or angles).

Mol	Chain	Bond lengths		Bond angles	
		RMSZ	$\# Z > 5$	RMSZ	$\# Z > 5$
1	A	1.00	0/474	1.42	0/636
2	H	1.10	3/1787 (0.2%)	1.15	5/2439 (0.2%)
3	L	1.06	0/1673	1.14	1/2274 (0.0%)
All	All	1.07	3/3934 (0.1%)	1.18	6/5349 (0.1%)

All (3) bond length outliers are listed below:

Mol	Chain	Res	Type	Atoms	Z	Observed(Å)	Ideal(Å)
2	H	129[A]	LYS	C-O	5.39	1.31	1.23
2	H	129[B]	LYS	C-O	5.39	1.31	1.23
2	H	181	VAL	C-O	5.28	1.29	1.23

All (6) bond angle outliers are listed below:

Mol	Chain	Res	Type	Atoms	Z	Observed(°)	Ideal(°)
3	L	200	GLN	CB-CA-C	5.85	119.15	110.14
2	H	29	PHE	CA-CB-CG	5.77	119.57	113.80
2	H	135	THR	CA-CB-OG1	-5.51	101.33	109.60
2	H	105	GLN	CB-CG-CD	5.33	121.66	112.60
2	H	91	TYR	CA-C-N	5.32	128.43	120.87
2	H	91	TYR	C-N-CA	5.32	128.43	120.87

There are no chirality outliers.

There are no planarity outliers.

5.2 Too-close contacts [i](#)

In the following table, the Non-H and H(model) columns list the number of non-hydrogen atoms and hydrogen atoms in the chain respectively. The H(added) column lists the number of hydrogen

atoms added and optimized by MolProbity. The Clashes column lists the number of clashes within the asymmetric unit, whereas Symm-Clashes lists symmetry-related clashes.

Mol	Chain	Non-H	H(model)	H(added)	Clashes	Symm-Clashes
1	A	468	0	473	5	0
2	H	1737	0	1680	22	0
3	L	1637	0	1593	23	0
4	A	16	0	28	0	0
4	H	32	0	56	10	0
4	L	32	0	56	6	0
5	H	1	0	0	0	0
6	A	17	0	0	1	0
6	H	172	0	0	0	0
6	L	175	0	0	3	0
All	All	4287	0	3886	50	0

The all-atom clashscore is defined as the number of clashes found per 1000 atoms (including hydrogen atoms). The all-atom clashscore for this structure is 6.

All (50) close contacts within the same asymmetric unit are listed below, sorted by their clash magnitude.

Atom-1	Atom-2	Interatomic distance (Å)	Clash overlap (Å)
2:H:98:SER:O	4:H:302:MPD:HM2	1.75	0.86
2:H:130:SER:HA	3:L:116:PHE:HD1	1.42	0.85
3:L:204:SER:OG	4:L:303:MPD:H12	1.81	0.81
1:A:65:LEU:HA	1:A:68:MET:CE	2.16	0.75
1:A:65:LEU:HD23	1:A:68:MET:HE1	1.73	0.70
2:H:129[B]:LYS:HD2	3:L:209:PHE:HB3	1.78	0.65
3:L:4:MET:HE3	3:L:23:CYS:SG	2.37	0.63
3:L:103:LYS:NZ	3:L:165:GLU:OE1	2.32	0.62
2:H:12:VAL:HG11	2:H:82(C):LEU:HD13	1.82	0.60
2:H:129[B]:LYS:CD	3:L:209:PHE:HB3	2.30	0.60
2:H:130:SER:HA	3:L:116:PHE:CD1	2.32	0.60
2:H:129[A]:LYS:HG3	3:L:117:ILE:O	2.02	0.59
3:L:163[A]:VAL:HG22	3:L:175:LEU:HD12	1.86	0.56
2:H:129[A]:LYS:HD2	3:L:119:PRO:HD3	1.87	0.56
3:L:191:VAL:HG22	3:L:210:ASN:ND2	2.23	0.53
3:L:103:LYS:CE	3:L:165:GLU:OE1	2.55	0.53
2:H:6:GLU:CB	2:H:107[B]:THR:HG23	2.39	0.52
3:L:204:SER:OG	4:L:303:MPD:C1	2.57	0.52
2:H:193:THR:OG1	4:H:304:MPD:CM	2.59	0.51
4:H:305:MPD:C5	4:H:305:MPD:HM1	2.41	0.51
3:L:108:ARG:HB3	4:L:304:MPD:H13	1.93	0.49

Continued on next page...

Continued from previous page...

Atom-1	Atom-2	Interatomic distance (Å)	Clash overlap (Å)
2:H:193:THR:OG1	4:H:304:MPD:HM2	2.13	0.49
1:A:65:LEU:HA	1:A:68:MET:HE3	1.92	0.48
4:L:301:MPD:C5	4:L:301:MPD:O2	2.61	0.48
4:H:305:MPD:HM1	4:H:305:MPD:H52	1.95	0.47
2:H:6:GLU:HB3	2:H:107[B]:THR:CG2	2.45	0.47
4:L:301:MPD:O2	4:L:301:MPD:H52	2.14	0.46
2:H:6:GLU:CB	2:H:107[B]:THR:CG2	2.94	0.45
3:L:103:LYS:HE2	3:L:165:GLU:OE1	2.17	0.45
2:H:6:GLU:HB3	2:H:107[B]:THR:HG23	1.98	0.45
2:H:100:TRP:HB3	4:H:303:MPD:H31	1.99	0.45
3:L:0:SER:N	6:L:402:HOH:O	2.45	0.44
1:A:65:LEU:CD2	1:A:68:MET:HE1	2.44	0.44
2:H:214:LYS:O	2:H:215:SER:C	2.61	0.44
3:L:0:SER:HA	3:L:95:PRO:CG	2.48	0.44
4:H:304:MPD:HM1	4:H:304:MPD:C5	2.48	0.43
2:H:178:LEU:C	2:H:178:LEU:HD12	2.44	0.42
3:L:100:GLN:CG	6:L:508:HOH:O	2.66	0.42
2:H:100:TRP:CB	4:H:303:MPD:H31	2.49	0.42
3:L:100:GLN:HG3	6:L:508:HOH:O	2.20	0.42
3:L:189:HIS:NE2	4:L:302:MPD:H52	2.35	0.42
4:H:302:MPD:O4	4:H:302:MPD:HM1	2.20	0.42
2:H:12:VAL:O	2:H:111:VAL:HA	2.19	0.42
3:L:152:ASN:HD22	3:L:152:ASN:HA	1.71	0.42
2:H:100:TRP:HB2	4:H:303:MPD:H11	2.02	0.42
3:L:0:SER:HA	3:L:95:PRO:HG3	2.02	0.41
2:H:6:GLU:HB2	2:H:107[B]:THR:HG23	2.03	0.41
2:H:11:LEU:HD23	2:H:110:THR:HB	2.03	0.41
1:A:63:LYS:HG2	6:A:204:HOH:O	2.21	0.40
3:L:163[A]:VAL:HG22	3:L:175:LEU:CD1	2.51	0.40

There are no symmetry-related clashes.

5.3 Torsion angles ⓘ

5.3.1 Protein backbone ⓘ

In the following table, the Percentiles column shows the percent Ramachandran outliers of the chain as a percentile score with respect to all X-ray entries followed by that with respect to entries of similar resolution.

The Analysed column shows the number of residues for which the backbone conformation was analysed, and the total number of residues.

Mol	Chain	Analysed	Favoured	Allowed	Outliers	Percentiles	
1	A	53/69 (77%)	53 (100%)	0	0	100	100
2	H	226/233 (97%)	222 (98%)	4 (2%)	0	100	100
3	L	211/213 (99%)	205 (97%)	6 (3%)	0	100	100
All	All	490/515 (95%)	480 (98%)	10 (2%)	0	100	100

There are no Ramachandran outliers to report.

5.3.2 Protein sidechains ⓘ

In the following table, the Percentiles column shows the percent sidechain outliers of the chain as a percentile score with respect to all X-ray entries followed by that with respect to entries of similar resolution.

The Analysed column shows the number of residues for which the sidechain conformation was analysed, and the total number of residues.

Mol	Chain	Analysed	Rotameric	Outliers	Percentiles	
1	A	51/61 (84%)	49 (96%)	2 (4%)	28	11
2	H	191/196 (97%)	188 (98%)	3 (2%)	55	39
3	L	188/188 (100%)	186 (99%)	2 (1%)	65	54
All	All	430/445 (97%)	423 (98%)	7 (2%)	59	39

All (7) residues with a non-rotameric sidechain are listed below:

Mol	Chain	Res	Type
1	A	31	GLU
1	A	71	LEU
2	H	29	PHE
2	H	148[A]	GLU
2	H	148[B]	GLU
3	L	50	SER
3	L	100	GLN

Sometimes sidechains can be flipped to improve hydrogen bonding and reduce clashes. All (7) such sidechains are listed below:

Mol	Chain	Res	Type
2	H	171	GLN
2	H	199	ASN
3	L	89	GLN

Continued on next page...

Continued from previous page...

Mol	Chain	Res	Type
3	L	152	ASN
3	L	160	GLN
3	L	200	GLN
3	L	210	ASN

5.3.3 RNA ⓘ

There are no RNA molecules in this entry.

5.4 Non-standard residues in protein, DNA, RNA chains ⓘ

There are no non-standard protein/DNA/RNA residues in this entry.

5.5 Carbohydrates ⓘ

There are no oligosaccharides in this entry.

5.6 Ligand geometry ⓘ

Of 11 ligands modelled in this entry, 1 is monoatomic - leaving 10 for Mogul analysis.

In the following table, the Counts columns list the number of bonds (or angles) for which Mogul statistics could be retrieved, the number of bonds (or angles) that are observed in the model and the number of bonds (or angles) that are defined in the Chemical Component Dictionary. The Link column lists molecule types, if any, to which the group is linked. The Z score for a bond length (or angle) is the number of standard deviations the observed value is removed from the expected value. A bond length (or angle) with $|Z| > 2$ is considered an outlier worth inspection. RMSZ is the root-mean-square of all Z scores of the bond lengths (or angles).

Mol	Type	Chain	Res	Link	Bond lengths			Bond angles		
					Counts	RMSZ	$\# Z > 2$	Counts	RMSZ	$\# Z > 2$
4	MPD	L	304	-	7,7,7	0.12	0	9,10,10	0.33	0
4	MPD	A	101	-	7,7,7	0.19	0	9,10,10	0.45	0
4	MPD	H	302	-	7,7,7	0.13	0	9,10,10	0.39	0
4	MPD	A	102	-	7,7,7	0.23	0	9,10,10	0.54	0
4	MPD	H	305	-	7,7,7	0.15	0	9,10,10	0.81	0
4	MPD	H	304	-	7,7,7	0.16	0	9,10,10	0.74	0
4	MPD	H	303	-	7,7,7	0.20	0	9,10,10	0.55	0
4	MPD	L	302	-	7,7,7	0.24	0	9,10,10	0.58	0
4	MPD	L	303	-	7,7,7	0.13	0	9,10,10	0.47	0
4	MPD	L	301	-	7,7,7	0.19	0	9,10,10	0.82	1 (11%)

In the following table, the Chirals column lists the number of chiral outliers, the number of chiral centers analysed, the number of these observed in the model and the number defined in the Chemical Component Dictionary. Similar counts are reported in the Torsion and Rings columns. '-' means no outliers of that kind were identified.

Mol	Type	Chain	Res	Link	Chirals	Torsions	Rings
4	MPD	L	304	-	-	0/5/5/5	-
4	MPD	A	101	-	-	1/5/5/5	-
4	MPD	H	302	-	-	3/5/5/5	-
4	MPD	A	102	-	-	0/5/5/5	-
4	MPD	H	305	-	-	1/5/5/5	-
4	MPD	H	304	-	-	2/5/5/5	-
4	MPD	H	303	-	-	5/5/5/5	-
4	MPD	L	302	-	-	0/5/5/5	-
4	MPD	L	303	-	-	3/5/5/5	-
4	MPD	L	301	-	-	2/5/5/5	-

There are no bond length outliers.

All (1) bond angle outliers are listed below:

Mol	Chain	Res	Type	Atoms	Z	Observed(°)	Ideal(°)
4	L	301	MPD	C5-C4-C3	2.11	121.48	111.67

There are no chirality outliers.

All (17) torsion outliers are listed below:

Mol	Chain	Res	Type	Atoms
4	H	302	MPD	O2-C2-C3-C4
4	H	302	MPD	CM-C2-C3-C4
4	H	303	MPD	C2-C3-C4-O4
4	H	303	MPD	C2-C3-C4-C5
4	L	301	MPD	C2-C3-C4-C5
4	A	101	MPD	C1-C2-C3-C4
4	H	302	MPD	C1-C2-C3-C4
4	H	303	MPD	C1-C2-C3-C4
4	L	303	MPD	CM-C2-C3-C4
4	H	304	MPD	C2-C3-C4-C5
4	H	305	MPD	C2-C3-C4-C5
4	H	303	MPD	O2-C2-C3-C4
4	H	304	MPD	O2-C2-C3-C4
4	L	301	MPD	O2-C2-C3-C4
4	L	303	MPD	O2-C2-C3-C4

Continued on next page...

Continued from previous page...

Mol	Chain	Res	Type	Atoms
4	H	303	MPD	CM-C2-C3-C4
4	L	303	MPD	C1-C2-C3-C4

There are no ring outliers.

8 monomers are involved in 16 short contacts:

Mol	Chain	Res	Type	Clashes	Symm-Clashes
4	L	304	MPD	1	0
4	H	302	MPD	2	0
4	H	305	MPD	2	0
4	H	304	MPD	3	0
4	H	303	MPD	3	0
4	L	302	MPD	1	0
4	L	303	MPD	2	0
4	L	301	MPD	2	0

5.7 Other polymers [i](#)

There are no such residues in this entry.

5.8 Polymer linkage issues [i](#)

There are no chain breaks in this entry.

6 Fit of model and data [i](#)

6.1 Protein, DNA and RNA chains [i](#)

In the following table, the column labelled ‘#RSRZ > 2’ contains the number (and percentage) of RSRZ outliers, followed by percent RSRZ outliers for the chain as percentile scores relative to all X-ray entries and entries of similar resolution. The OWAB column contains the minimum, median, 95th percentile and maximum values of the occupancy-weighted average B-factor per residue. The column labelled ‘Q < 0.9’ lists the number of (and percentage) of residues with an average occupancy less than 0.9.

Mol	Chain	Analysed	<RSRZ>	#RSRZ>2	OWAB(Å ²)	Q<0.9
1	A	55/69 (79%)	0.05	1 (1%) 67 75	41, 56, 130, 147	0
2	H	224/233 (96%)	-0.28	2 (0%) 81 87	19, 42, 64, 102	4 (1%)
3	L	212/213 (99%)	-0.39	0 100 100	17, 41, 63, 88	1 (0%)
All	All	491/515 (95%)	-0.29	3 (0%) 85 90	17, 43, 75, 147	5 (1%)

All (3) RSRZ outliers are listed below:

Mol	Chain	Res	Type	RSRZ
2	H	215	SER	3.7
1	A	25	LEU	3.2
2	H	130	SER	2.7

6.2 Non-standard residues in protein, DNA, RNA chains [i](#)

There are no non-standard protein/DNA/RNA residues in this entry.

6.3 Carbohydrates [i](#)

There are no oligosaccharides in this entry.

6.4 Ligands [i](#)

In the following table, the Atoms column lists the number of modelled atoms in the group and the number defined in the chemical component dictionary. The B-factors column lists the minimum, median, 95th percentile and maximum values of B factors of atoms in the group. The column labelled ‘Q < 0.9’ lists the number of atoms with occupancy less than 0.9.

Mol	Type	Chain	Res	Atoms	RSCC	RSR	B-factors(Å ²)	Q<0.9
4	MPD	H	303	8/8	0.61	0.27	84,103,113,123	0

Continued on next page...

Continued from previous page...

Mol	Type	Chain	Res	Atoms	RSCC	RSR	B-factors(\AA^2)	Q<0.9
4	MPD	H	305	8/8	0.80	0.22	92,103,110,113	0
4	MPD	H	304	8/8	0.84	0.19	95,98,100,103	0
4	MPD	A	102	8/8	0.84	0.22	83,91,106,113	0
4	MPD	L	304	8/8	0.86	0.18	95,106,109,109	0
4	MPD	L	302	8/8	0.87	0.18	65,71,75,76	0
4	MPD	H	302	8/8	0.90	0.15	63,69,83,85	0
4	MPD	L	301	8/8	0.90	0.20	82,87,91,96	0
4	MPD	A	101	8/8	0.91	0.19	81,88,93,97	0
4	MPD	L	303	8/8	0.92	0.15	65,77,91,93	0
5	CL	H	301	1/1	0.99	0.04	46,46,46,46	0

6.5 Other polymers [i](#)

There are no such residues in this entry.