



Full wwPDB X-ray Structure Validation Report ⓘ

May 7, 2026 – 02:15 PM EDT

PDB ID : 9CBR / pdb_00009cbr
Title : Methionine synthase from *Thermus thermophilus* HB8, Homocysteine, Folate, and Cobalamin Domains, Catalytic Conformation (Hcy-on)
Authors : Yamada, K.; Menjdoza, J.; Koutmos, M.
Deposited on : 2024-06-19
Resolution : 2.38 Å(reported)

This is a Full wwPDB X-ray Structure Validation Report for a publicly released PDB entry.

We welcome your comments at validation@mail.wwpdb.org

A user guide is available at

<https://www.wwpdb.org/validation/2017/XrayValidationReportHelp>

with specific help available everywhere you see the ⓘ symbol.

The types of validation reports are described at

<http://www.wwpdb.org/validation/2017/FAQs#types>.

The following versions of software and data (see [references ⓘ](#)) were used in the production of this report:

MolProbity	:	4-5-2 with Phenix2.0
Mogul	:	2022.3.0, CSD as543be (2022)
Xtriage (Phenix)	:	2.0
EDS	:	3.0
Buster-report	:	wwPDB partial adaption of 1.1.7 (2018)
Percentile statistics	:	20250101.v01 (using entries in the PDB archive January 1st 2025)
CCP4	:	9.0.010 (Gargrove)
Density-Fitness	:	1.0.12
Ideal geometry (proteins)	:	Engh & Huber (2001)
Ideal geometry (DNA, RNA)	:	Parkinson et al. (1996)
Validation Pipeline (wwPDB-VP)	:	2.49

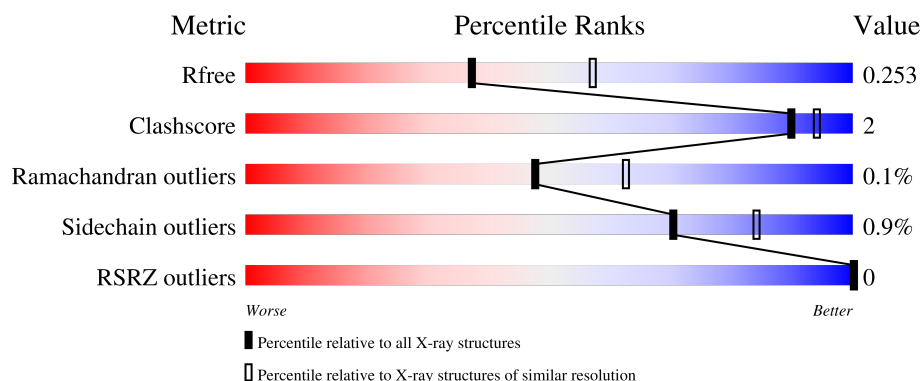
1 Overall quality at a glance

The following experimental techniques were used to determine the structure:

X-RAY DIFFRACTION


The reported resolution of this entry is 2.38 Å.

Percentile scores (ranging between 0-100) for global validation metrics of the entry are shown in the following graphic. The table shows the number of entries on which the scores are based.



Metric	Whole archive (#Entries)	Similar resolution (#Entries, resolution range(Å))
R_{free}	180053	7164 (2.40-2.36)
Clashscore	190562	7722 (2.40-2.36)
Ramachandran outliers	187476	7626 (2.40-2.36)
Sidechain outliers	187428	7627 (2.40-2.36)
RSRZ outliers	180081	7170 (2.40-2.36)

The table below summarises the geometric issues observed across the polymeric chains and their fit to the electron density. The red, orange, yellow and green segments of the lower bar indicate the fraction of residues that contain outliers for ≥ 3 , 2, 1 and 0 types of geometric quality criteria respectively. A grey segment represents the fraction of residues that are not modelled. The numeric value for each fraction is indicated below the corresponding segment, with a dot representing fractions $\leq 5\%$. The upper red bar (where present) indicates the fraction of residues that have poor fit to the electron density. The numeric value is given above the bar.

Mol	Chain	Length	Quality of chain
1	A	877	

2 Entry composition

There are 7 unique types of molecules in this entry. The entry contains 7023 atoms, of which 0 are hydrogens and 0 are deuteriums.

In the tables below, the ZeroOcc column contains the number of atoms modelled with zero occupancy, the AltConf column contains the number of residues with at least one atom in alternate conformation and the Trace column contains the number of residues modelled with at most 2 atoms.

- Molecule 1 is a protein called Methionine synthase.

Mol	Chain	Residues	Atoms					ZeroOcc	AltConf	Trace
1	A	867	Total	C	N	O	S	0	0	0
			6646	4230	1162	1226	28			

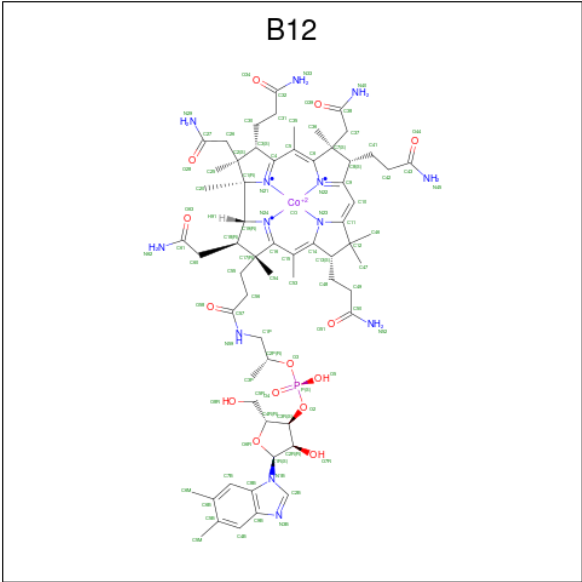
There are 10 discrepancies between the modelled and reference sequences:

Chain	Residue	Modelled	Actual	Comment	Reference
A	110	ALA	PHE	engineered mutation	UNP Q5SKM5
A	123	ALA	GLU	engineered mutation	UNP Q5SKM5
A	124	ALA	GLU	engineered mutation	UNP Q5SKM5
A	268	ALA	ARG	engineered mutation	UNP Q5SKM5
A	651	ALA	ASP	engineered mutation	UNP Q5SKM5
A	652	ALA	PRO	engineered mutation	UNP Q5SKM5
A	653	ALA	GLY	engineered mutation	UNP Q5SKM5
A	759	ALA	ASP	engineered mutation	UNP Q5SKM5
A	774	HIS	ASN	engineered mutation	UNP Q5SKM5
A	826	ALA	ARG	engineered mutation	UNP Q5SKM5

- Molecule 2 is ZINC ION (CCD ID: ZN) (formula: Zn) (labeled as "Ligand of Interest" by depositor).

Mol	Chain	Residues	Atoms		ZeroOcc	AltConf
2	A	2	Total	Zn	0	0
			2	2		

- Molecule 3 is COBALAMIN (CCD ID: B12) (formula: C₆₂H₈₉CoN₁₃O₁₄P) (labeled as "Ligand of Interest" by depositor).

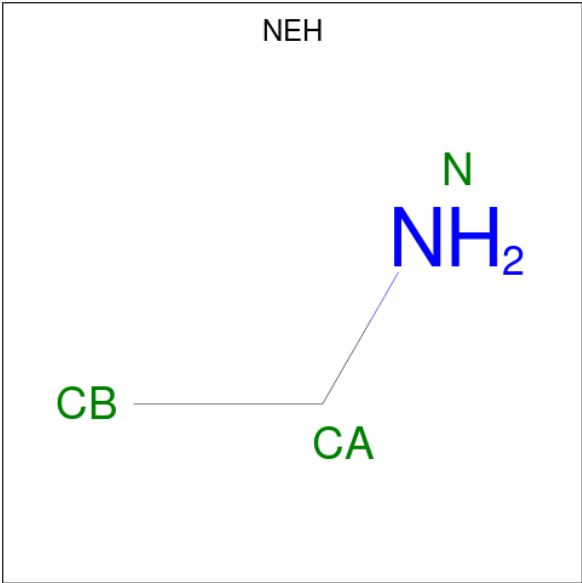


Mol	Chain	Residues	Atoms					ZeroOcc	AltConf
			Total	C	Co	N	O P		
3	A	1	91	62	1	13	14 1	0	0

- Molecule 4 is POTASSIUM ION (CCD ID: K) (formula: K).

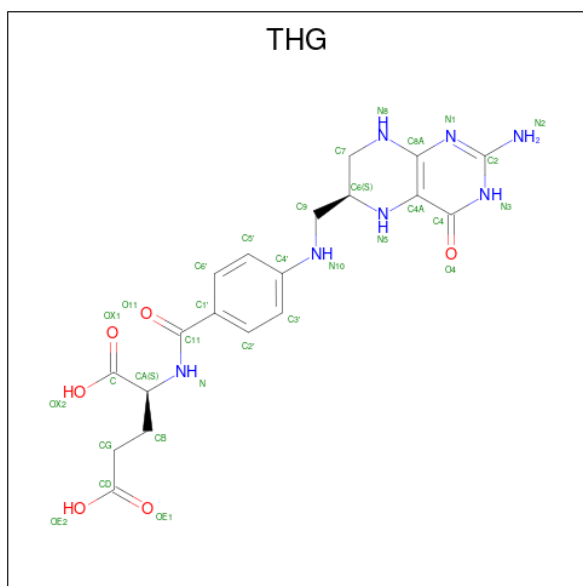
Mol	Chain	Residues	Atoms		ZeroOcc	AltConf
4	A	1	Total	K	0	0
			1	1		

- Molecule 5 is ETHANAMINE (CCD ID: NEH) (formula: C₂H₇N) (labeled as "Ligand of Interest" by depositor).



Mol	Chain	Residues	Atoms			ZeroOcc	AltConf
5	A	1	Total	C	N	0	0
			3	2	1		

- Molecule 6 is (6S)-5,6,7,8-TETRAHYDROFOLATE (CCD ID: THG) (formula: C₁₉H₂₃N₇O₆) (labeled as "Ligand of Interest" by depositor).



Mol	Chain	Residues	Atoms				ZeroOcc	AltConf
6	A	1	Total	C	N	O	0	0
			32	19	7	6		

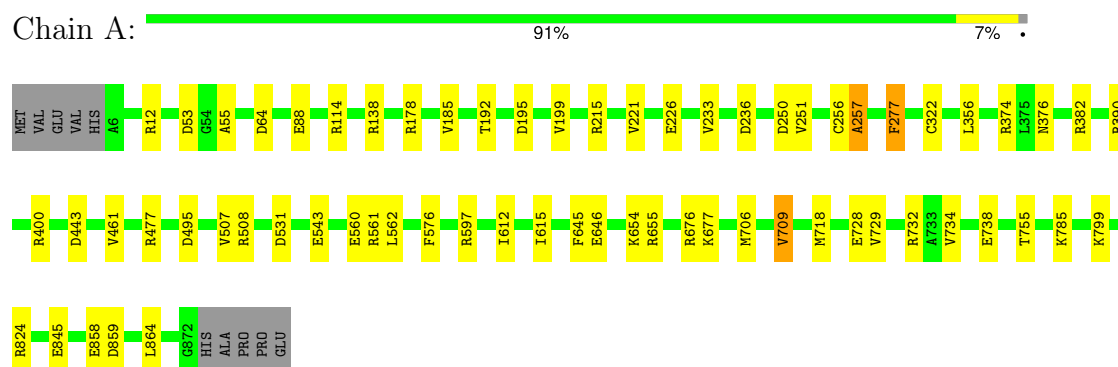
- Molecule 7 is water.

Mol	Chain	Residues	Atoms		ZeroOcc	AltConf
7	A	241	Total	O	0	0
			241	241		
7	A	7	Total	O	0	0
			7	7		

3 Residue-property plots

These plots are drawn for all protein, RNA, DNA and oligosaccharide chains in the entry. The first graphic for a chain summarises the proportions of the various outlier classes displayed in the second graphic. The second graphic shows the sequence view annotated by issues in geometry and electron density. Residues are color-coded according to the number of geometric quality criteria for which they contain at least one outlier: green = 0, yellow = 1, orange = 2 and red = 3 or more. A red dot above a residue indicates a poor fit to the electron density ($RSRZ > 2$). Stretches of 2 or more consecutive residues without any outlier are shown as a green connector. Residues present in the sample, but not in the model, are shown in grey.

- Molecule 1: Methionine synthase



4 Data and refinement statistics

Property	Value	Source
Space group	P 21 21 21	Depositor
Cell constants a, b, c, α , β , γ	70.81Å 115.10Å 120.80Å 90.00° 90.00° 90.00°	Depositor
Resolution (Å)	83.33 – 2.38 83.33 – 2.38	Depositor EDS
% Data completeness (in resolution range)	98.9 (83.33-2.38) 88.0 (83.33-2.38)	Depositor EDS
R_{merge}	0.55	Depositor
R_{sym}	(Not available)	Depositor
$\langle I/\sigma(I) \rangle$ ¹	1.37 (at 2.40Å)	Xtriage
Refinement program	REFMAC 5.8.0431	Depositor
R, R_{free}	0.195 , 0.217 0.225 , 0.253	Depositor DCC
R_{free} test set	2019 reflections (5.02%)	wwPDB-VP
Wilson B-factor (Å ²)	24.2	Xtriage
Anisotropy	0.685	Xtriage
Bulk solvent k_{sol} (e/Å ³), B_{sol} (Å ²)	0.33 , 22.5	EDS
L-test for twinning ²	$\langle L \rangle = 0.43$, $\langle L^2 \rangle = 0.26$	Xtriage
Estimated twinning fraction	0.047 for -h,l,k	Xtriage
F_o, F_c correlation	0.93	EDS
Total number of atoms	7023	wwPDB-VP
Average B, all atoms (Å ²)	36.0	wwPDB-VP

Xtriage's analysis on translational NCS is as follows: *The largest off-origin peak in the Patterson function is 3.98% of the height of the origin peak. No significant pseudotranslation is detected.*

¹Intensities estimated from amplitudes.

²Theoretical values of $\langle |L| \rangle$, $\langle L^2 \rangle$ for acentric reflections are 0.5, 0.333 respectively for untwinned datasets, and 0.375, 0.2 for perfectly twinned datasets.

5 Model quality

5.1 Standard geometry

Bond lengths and bond angles in the following residue types are not validated in this section: K, NEH, B12, ZN, THG

The Z score for a bond length (or angle) is the number of standard deviations the observed value is removed from the expected value. A bond length (or angle) with $|Z| > 5$ is considered an outlier worth inspection. RMSZ is the root-mean-square of all Z scores of the bond lengths (or angles).

Mol	Chain	Bond lengths		Bond angles	
		RMSZ	$\# Z > 5$	RMSZ	$\# Z > 5$
1	A	0.83	2/6768 (0.0%)	1.40	28/9161 (0.3%)

Chiral center outliers are detected by calculating the chiral volume of a chiral center and verifying if the center is modelled as a planar moiety or with the opposite hand. A planarity outlier is detected by checking planarity of atoms in a peptide group, atoms in a mainchain group or atoms of a sidechain that are expected to be planar.

Mol	Chain	#Chirality outliers	#Planarity outliers
1	A	0	8

All (2) bond length outliers are listed below:

Mol	Chain	Res	Type	Atoms	Z	Observed(Å)	Ideal(Å)
1	A	654	LYS	C-N	9.20	1.45	1.33
1	A	655	ARG	C-N	7.70	1.43	1.33

All (28) bond angle outliers are listed below:

Mol	Chain	Res	Type	Atoms	Z	Observed(°)	Ideal(°)
1	A	799	LYS	CB-CA-C	8.87	117.50	111.20
1	A	195	ASP	CA-CB-CG	8.12	120.72	112.60
1	A	654	LYS	O-C-N	8.07	132.75	123.31
1	A	64	ASP	CA-CB-CG	7.18	119.78	112.60
1	A	226	GLU	CB-CG-CD	6.58	123.78	112.60
1	A	53	ASP	CA-CB-CG	6.57	119.17	112.60
1	A	178	ARG	CA-C-N	6.32	127.11	120.03
1	A	178	ARG	C-N-CA	6.32	127.11	120.03
1	A	236	ASP	CA-CB-CG	6.05	118.66	112.60
1	A	859	ASP	CA-CB-CG	5.97	118.58	112.60
1	A	376	ASN	CB-CA-C	5.83	119.47	110.14

Continued on next page...

Continued from previous page...

Mol	Chain	Res	Type	Atoms	Z	Observed(°)	Ideal(°)
1	A	443	ASP	CA-CB-CG	5.83	118.42	112.60
1	A	785	LYS	CA-C-N	-5.75	118.45	122.59
1	A	785	LYS	C-N-CA	-5.75	118.45	122.59
1	A	531	ASP	CA-CB-CG	5.66	118.26	112.60
1	A	461	VAL	N-CA-CB	-5.42	105.61	112.60
1	A	709	VAL	N-CA-CB	5.40	118.68	110.58
1	A	560	GLU	CB-CG-CD	5.38	121.75	112.60
1	A	560	GLU	N-CA-CB	5.36	118.08	110.16
1	A	709	VAL	N-CA-C	-5.34	105.33	110.72
1	A	390	ARG	CB-CA-C	5.22	118.85	111.86
1	A	495	ASP	CA-CB-CG	5.19	117.79	112.60
1	A	277	PHE	CA-CB-CG	5.16	118.96	113.80
1	A	646	GLU	CB-CG-CD	5.13	121.32	112.60
1	A	845	GLU	CB-CG-CD	5.11	121.28	112.60
1	A	576	PHE	CA-CB-CG	5.06	118.86	113.80
1	A	250	ASP	CA-CB-CG	5.03	117.63	112.60
1	A	645	PHE	CB-CA-C	5.03	119.40	110.85

There are no chirality outliers.

All (8) planarity outliers are listed below:

Mol	Chain	Res	Type	Group
1	A	12	ARG	Sidechain
1	A	138	ARG	Sidechain
1	A	400	ARG	Sidechain
1	A	477	ARG	Sidechain
1	A	597	ARG	Sidechain
1	A	676	ARG	Sidechain
1	A	732	ARG	Sidechain
1	A	824	ARG	Sidechain

5.2 Too-close contacts ⓘ

In the following table, the Non-H and H(model) columns list the number of non-hydrogen atoms and hydrogen atoms in the chain respectively. The H(added) column lists the number of hydrogen atoms added and optimized by MolProbity. The Clashes column lists the number of clashes within the asymmetric unit, whereas Symm-Clashes lists symmetry-related clashes.

Mol	Chain	Non-H	H(model)	H(added)	Clashes	Symm-Clashes
1	A	6646	0	6767	17	0
2	A	2	0	0	0	0

Continued on next page...

Continued from previous page...

Mol	Chain	Non-H	H(model)	H(added)	Clashes	Symm-Clashes
3	A	91	0	88	8	0
4	A	1	0	0	0	0
5	A	3	0	6	0	0
6	A	32	0	21	0	0
7	A	248	0	0	1	0
All	All	7023	0	6882	24	0

The all-atom clashscore is defined as the number of clashes found per 1000 atoms (including hydrogen atoms). The all-atom clashscore for this structure is 2.

All (24) close contacts within the same asymmetric unit are listed below, sorted by their clash magnitude.

Atom-1	Atom-2	Interatomic distance (Å)	Clash overlap (Å)
3:A:903:B12:H543	3:A:903:B12:H531	1.61	0.82
3:A:903:B12:H362	3:A:903:B12:H351	1.75	0.68
1:A:55:ALA:HB2	1:A:322:CYS:O	1.95	0.65
1:A:543:GLU:H	1:A:543:GLU:CD	2.10	0.59
3:A:903:B12:H3	3:A:903:B12:H291	1.71	0.55
3:A:903:B12:H562	3:A:903:B12:C53	2.36	0.54
1:A:114:ARG:NE	7:A:1004:HOH:O	2.38	0.52
1:A:233:VAL:HG12	1:A:356:LEU:HD21	1.94	0.50
1:A:374:ARG:HH22	1:A:382:ARG:HH21	1.59	0.50
1:A:709:VAL:HG23	1:A:718:MET:SD	2.54	0.47
1:A:706:MET:O	1:A:709:VAL:HG12	2.14	0.47
1:A:507:VAL:O	1:A:508:ARG:C	2.61	0.44
3:A:903:B12:H531	3:A:903:B12:C54	2.39	0.44
1:A:612:ILE:HA	1:A:615:ILE:HD12	2.00	0.43
1:A:257:ALA:O	3:A:903:B12:N62	2.49	0.43
1:A:677:LYS:HG3	1:A:729:VAL:HG22	2.01	0.42
3:A:903:B12:H363	3:A:903:B12:H411	1.67	0.42
1:A:199:VAL:HG13	1:A:221:VAL:HG11	2.00	0.42
1:A:561:ARG:O	1:A:562:LEU:HD23	2.20	0.42
1:A:88:GLU:H	1:A:88:GLU:CD	2.28	0.42
1:A:734:VAL:O	1:A:738:GLU:HB2	2.19	0.41
1:A:251:VAL:HG22	1:A:277:PHE:HB2	2.02	0.41
3:A:903:B12:H362	3:A:903:B12:C35	2.47	0.41
1:A:185:VAL:O	1:A:215:ARG:NH2	2.47	0.41

There are no symmetry-related clashes.

5.3 Torsion angles [i](#)

5.3.1 Protein backbone [i](#)

In the following table, the Percentiles column shows the percent Ramachandran outliers of the chain as a percentile score with respect to all X-ray entries followed by that with respect to entries of similar resolution.

The Analysed column shows the number of residues for which the backbone conformation was analysed, and the total number of residues.

Mol	Chain	Analysed	Favoured	Allowed	Outliers	Percentiles
1	A	865/877 (99%)	829 (96%)	35 (4%)	1 (0%)	48 62

All (1) Ramachandran outliers are listed below:

Mol	Chain	Res	Type
1	A	257	ALA

5.3.2 Protein sidechains [i](#)

In the following table, the Percentiles column shows the percent sidechain outliers of the chain as a percentile score with respect to all X-ray entries followed by that with respect to entries of similar resolution.

The Analysed column shows the number of residues for which the sidechain conformation was analysed, and the total number of residues.

Mol	Chain	Analysed	Rotameric	Outliers	Percentiles
1	A	679/688 (99%)	673 (99%)	6 (1%)	70 84

All (6) residues with a non-rotameric sidechain are listed below:

Mol	Chain	Res	Type
1	A	192	THR
1	A	256	CYS
1	A	728	GLU
1	A	755	THR
1	A	858	GLU
1	A	864	LEU

Sometimes sidechains can be flipped to improve hydrogen bonding and reduce clashes. All (8) such sidechains are listed below:

Mol	Chain	Res	Type
1	A	115	HIS
1	A	198	GLN
1	A	587	ASN
1	A	614	GLN
1	A	719	GLN
1	A	725	GLN
1	A	775	ASN
1	A	798	HIS

5.3.3 RNA ⓘ

There are no RNA molecules in this entry.

5.4 Non-standard residues in protein, DNA, RNA chains ⓘ

There are no non-standard protein/DNA/RNA residues in this entry.

5.5 Carbohydrates ⓘ

There are no oligosaccharides in this entry.

5.6 Ligand geometry ⓘ

Of 6 ligands modelled in this entry, 3 are monoatomic - leaving 3 for Mogul analysis.

In the following table, the Counts columns list the number of bonds (or angles) for which Mogul statistics could be retrieved, the number of bonds (or angles) that are observed in the model and the number of bonds (or angles) that are defined in the Chemical Component Dictionary. The Link column lists molecule types, if any, to which the group is linked. The Z score for a bond length (or angle) is the number of standard deviations the observed value is removed from the expected value. A bond length (or angle) with $|Z| > 2$ is considered an outlier worth inspection. RMSZ is the root-mean-square of all Z scores of the bond lengths (or angles).

Mol	Type	Chain	Res	Link	Bond lengths			Bond angles		
					Counts	RMSZ	$\# Z > 2$	Counts	RMSZ	$\# Z > 2$
5	NEH	A	1243	2	2,2,2	0.11	0	0,1,1	-	-
3	B12	A	903	-	94,101,101	0.65	2 (2%)	149,166,166	1.15	14 (9%)
6	THG	A	1252	-	32,34,34	0.87	1 (3%)	39,47,47	0.96	1 (2%)

In the following table, the Chirals column lists the number of chiral outliers, the number of chiral centers analysed, the number of these observed in the model and the number defined in the

Chemical Component Dictionary. Similar counts are reported in the Torsion and Rings columns.
'-' means no outliers of that kind were identified.

Mol	Type	Chain	Res	Link	Chirals	Torsions	Rings
3	B12	A	903	-	-	21/56/223/223	0/3/11/11
6	THG	A	1252	-	-	2/22/31/31	0/3/3/3

All (3) bond length outliers are listed below:

Mol	Chain	Res	Type	Atoms	Z	Observed(Å)	Ideal(Å)
6	A	1252	THG	C4A-C8A	3.08	1.43	1.38
3	A	903	B12	C16-C15	-2.54	1.37	1.44
3	A	903	B12	C9-N22	2.34	1.36	1.30

All (15) bond angle outliers are listed below:

Mol	Chain	Res	Type	Atoms	Z	Observed(°)	Ideal(°)
3	A	903	B12	C19-N24-C16	5.26	113.04	107.29
3	A	903	B12	C9-N22-C6	3.30	109.25	105.28
3	A	903	B12	C26-C2-C1	3.26	115.04	110.00
3	A	903	B12	C2-C1-N21	3.00	105.95	101.78
3	A	903	B12	C13-C12-C11	-2.85	97.78	100.97
3	A	903	B12	C7-C37-C38	2.77	122.49	114.28
3	A	903	B12	C1-C19-N24	-2.69	103.25	106.25
3	A	903	B12	C17-C16-C15	2.63	130.42	126.26
6	A	1252	THG	C2-N1-C8A	2.49	117.75	113.36
3	A	903	B12	C18-C17-C16	2.47	103.67	100.69
3	A	903	B12	C20-C1-N21	-2.41	106.28	110.26
3	A	903	B12	C55-C17-C16	-2.39	111.92	116.59
3	A	903	B12	C9B-C8B-N1B	2.31	106.33	105.30
3	A	903	B12	C15-C16-N24	-2.28	119.18	122.42
3	A	903	B12	C25-C2-C1	-2.12	110.58	113.75

There are no chirality outliers.

All (23) torsion outliers are listed below:

Mol	Chain	Res	Type	Atoms
3	A	903	B12	C2-C26-C27-O28
3	A	903	B12	C3-C30-C31-C32
3	A	903	B12	C16-C17-C55-C56
3	A	903	B12	C54-C17-C55-C56
3	A	903	B12	C2-C26-C27-N29
3	A	903	B12	C42-C41-C8-C9

Continued on next page...

Continued from previous page...

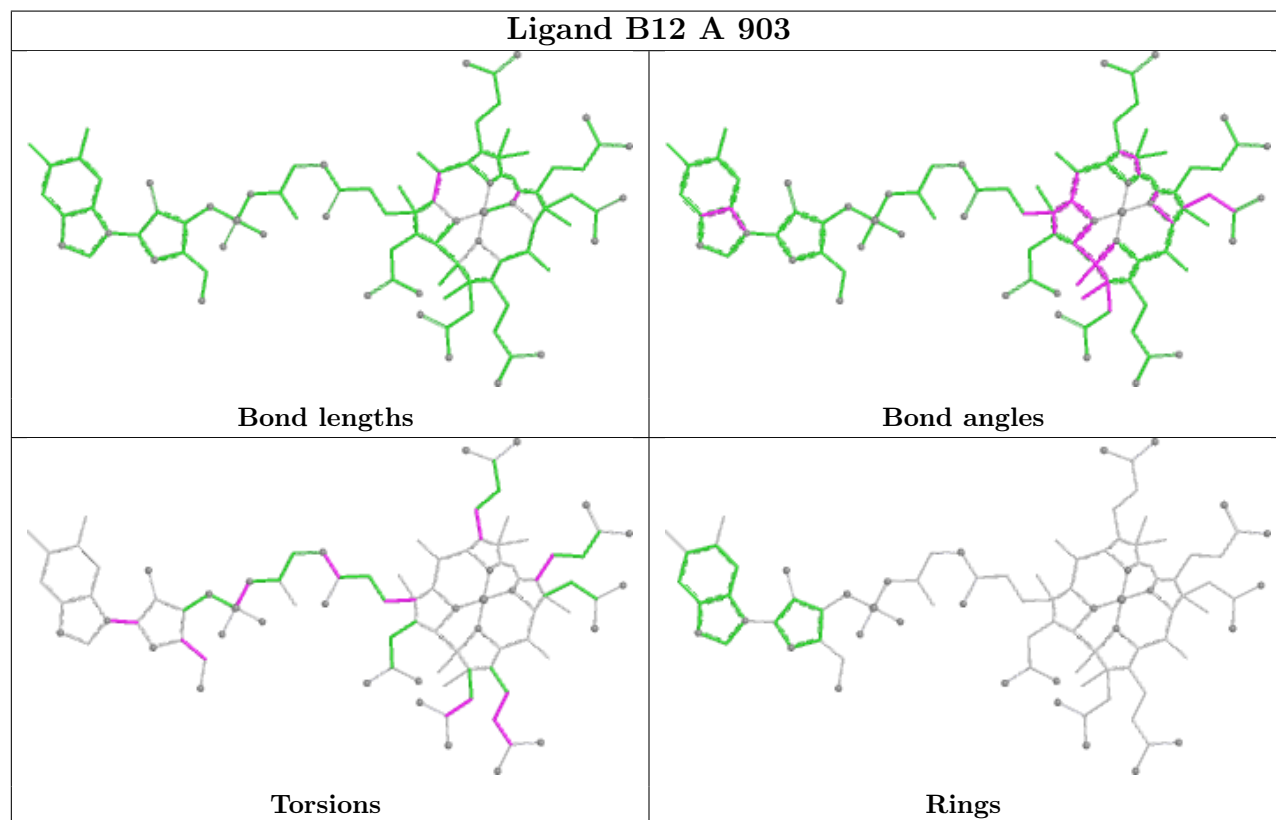
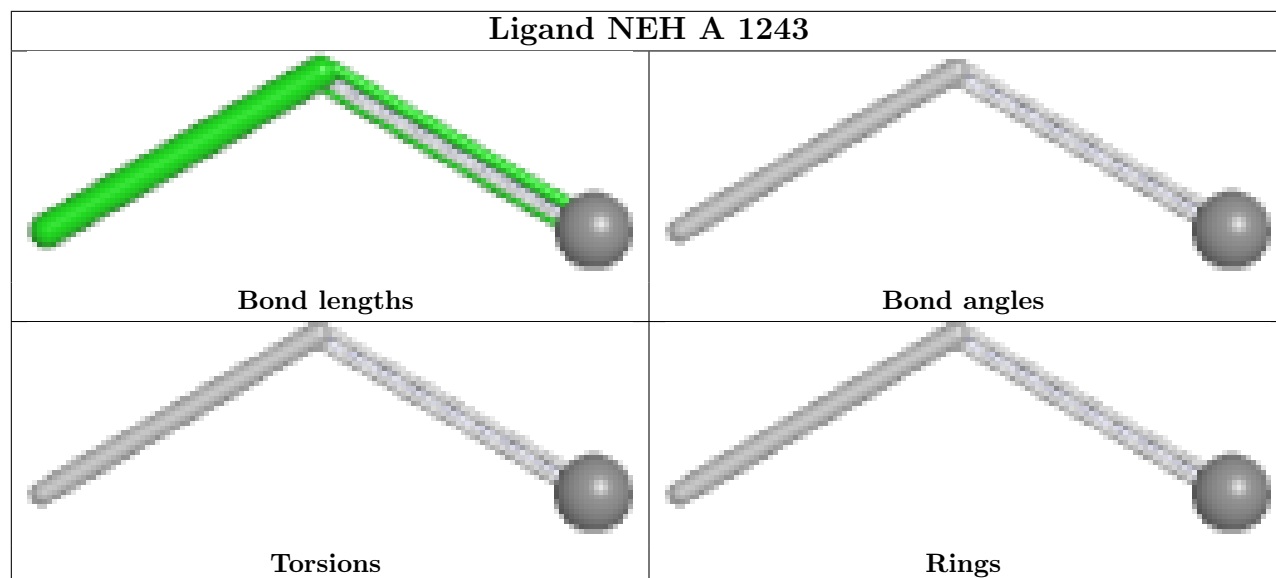
Mol	Chain	Res	Type	Atoms
6	A	1252	THG	N-CA-CB-CG
3	A	903	B12	C42-C41-C8-C7
3	A	903	B12	O6R-C4R-C5R-O8R
3	A	903	B12	C56-C57-N59-C1P
6	A	1252	THG	C-CA-CB-CG
3	A	903	B12	O58-C57-N59-C1P
3	A	903	B12	C12-C13-C48-C49
3	A	903	B12	C14-C13-C48-C49
3	A	903	B12	C30-C31-C32-O34
3	A	903	B12	C30-C31-C32-N33
3	A	903	B12	C2R-C1R-N1B-C2B
3	A	903	B12	C3R-C4R-C5R-O8R
3	A	903	B12	C2R-C1R-N1B-C8B
3	A	903	B12	O6R-C1R-N1B-C8B
3	A	903	B12	C18-C17-C55-C56
3	A	903	B12	O6R-C1R-N1B-C2B
3	A	903	B12	C2P-O3-P-O4

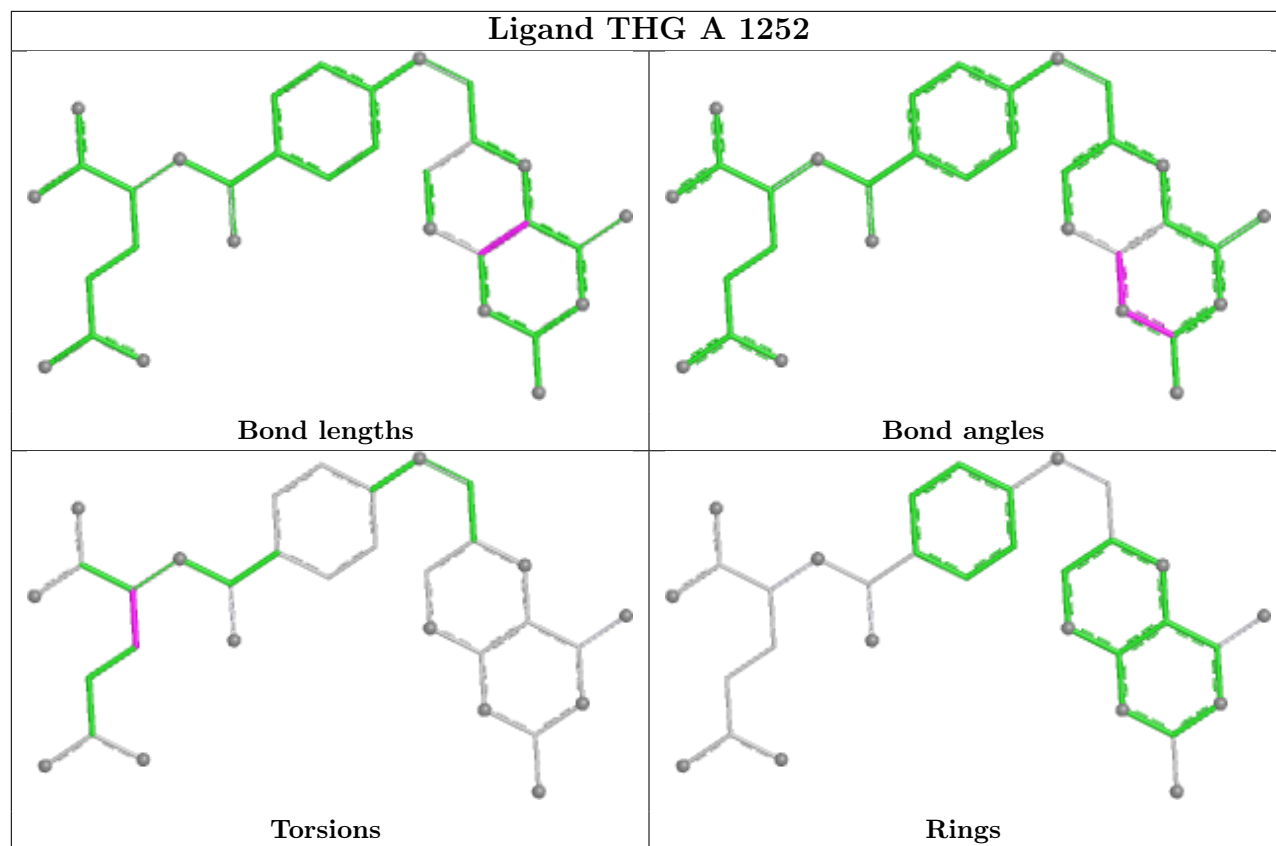
There are no ring outliers.

1 monomer is involved in 8 short contacts:

Mol	Chain	Res	Type	Clashes	Symm-Clashes
3	A	903	B12	8	0

The following is a two-dimensional graphical depiction of Mogul quality analysis of bond lengths, bond angles, torsion angles, and ring geometry for all instances of the Ligand of Interest. In addition, ligands with molecular weight > 250 and outliers as shown on the validation Tables will also be included. For torsion angles, if less than 5% of the Mogul distribution of torsion angles is within 10 degrees of the torsion angle in question, then that torsion angle is considered an outlier. Any bond that is central to one or more torsion angles identified as an outlier by Mogul will be highlighted in the graph. For rings, the root-mean-square deviation (RMSD) between the ring in question and similar rings identified by Mogul is calculated over all ring torsion angles. If the average RMSD is greater than 60 degrees and the minimal RMSD between the ring in question and any Mogul-identified rings is also greater than 60 degrees, then that ring is considered an outlier. The outliers are highlighted in purple. The color gray indicates Mogul did not find sufficient equivalents in the CSD to analyse the geometry.





5.7 Other polymers [i](#)

There are no such residues in this entry.

5.8 Polymer linkage issues [i](#)

There are no chain breaks in this entry.

6 Fit of model and data [i](#)

6.1 Protein, DNA and RNA chains [i](#)

In the following table, the column labelled ‘#RSRZ> 2’ contains the number (and percentage) of RSRZ outliers, followed by percent RSRZ outliers for the chain as percentile scores relative to all X-ray entries and entries of similar resolution. The OWAB column contains the minimum, median, 95th percentile and maximum values of the occupancy-weighted average B-factor per residue. The column labelled ‘Q< 0.9’ lists the number of (and percentage) of residues with an average occupancy less than 0.9.

Mol	Chain	Analysed	<RSRZ>	#RSRZ>2	OWAB(Å ²)	Q<0.9
1	A	867/877 (98%)	-1.19	0 100 100	14, 33, 66, 97	0

There are no RSRZ outliers to report.

6.2 Non-standard residues in protein, DNA, RNA chains [i](#)

There are no non-standard protein/DNA/RNA residues in this entry.

6.3 Carbohydrates [i](#)

There are no oligosaccharides in this entry.

6.4 Ligands [i](#)

In the following table, the Atoms column lists the number of modelled atoms in the group and the number defined in the chemical component dictionary. The B-factors column lists the minimum, median, 95th percentile and maximum values of B factors of atoms in the group. The column labelled ‘Q< 0.9’ lists the number of atoms with occupancy less than 0.9.

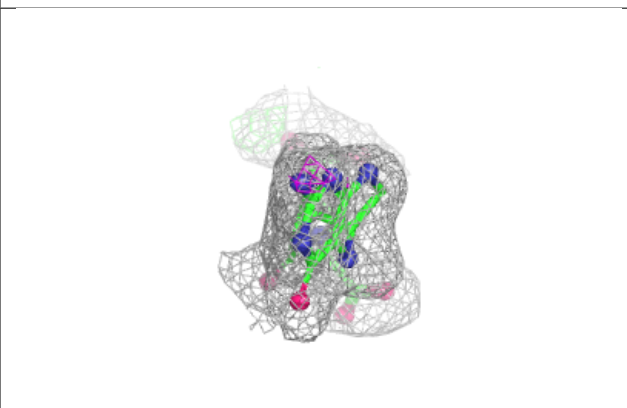
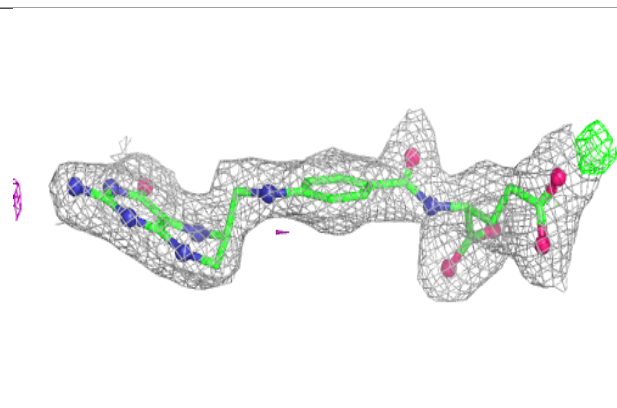
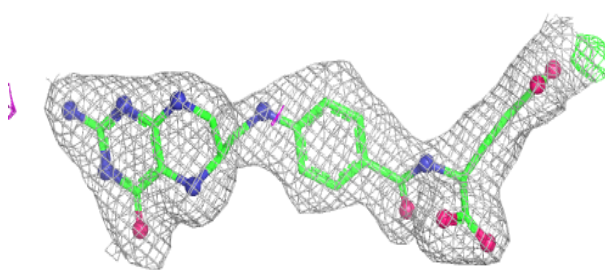
Mol	Type	Chain	Res	Atoms	RSCC	RSR	B-factors(Å ²)	Q<0.9
6	THG	A	1252	32/32	0.98	0.04	16,20,25,26	0
5	NEH	A	1243	3/3	0.99	0.06	24,24,32,33	0
4	K	A	905	1/1	0.99	0.04	52,52,52,52	0
2	ZN	A	902	1/1	1.00	0.01	36,36,36,36	0
2	ZN	A	904	1/1	1.00	0.01	54,54,54,54	0
3	B12	A	903	91/91	1.00	0.03	15,22,27,31	0

The following is a graphical depiction of the model fit to experimental electron density of all instances of the Ligand of Interest. In addition, ligands with molecular weight > 250 and outliers as shown on the geometry validation Tables will also be included. Each fit is shown from different

orientation to approximate a three-dimensional view.

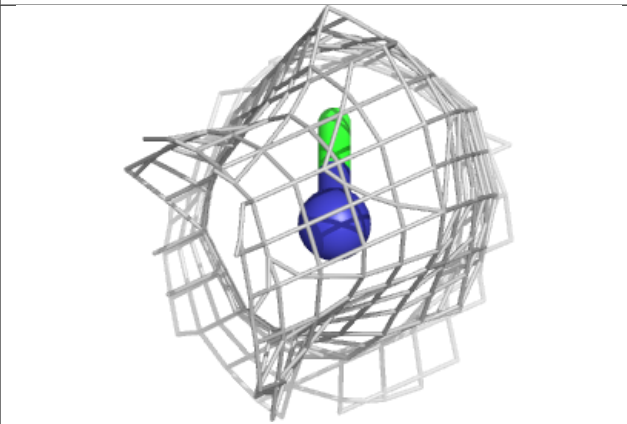
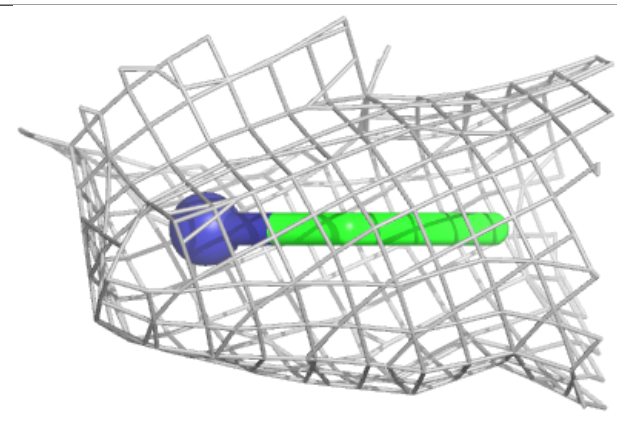
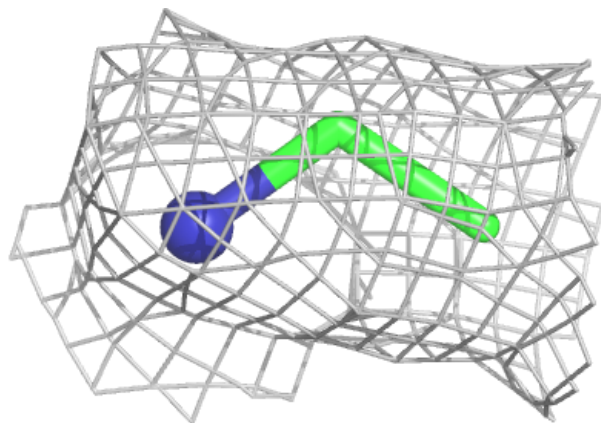
Electron density around THG A 1252:

$2mF_o-DF_c$ (at 0.7 rmsd) in gray
 mF_o-DF_c (at 3 rmsd) in purple (negative)
and green (positive)



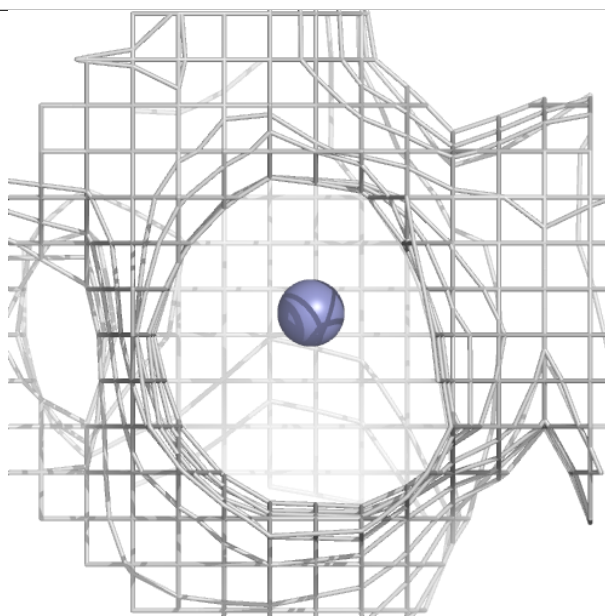
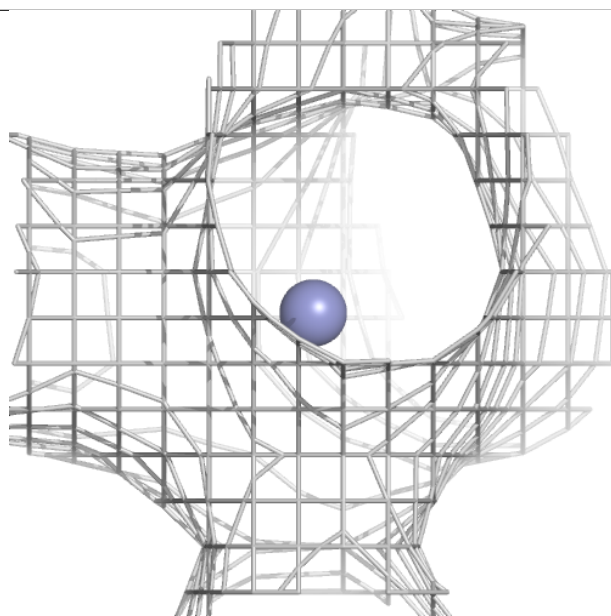
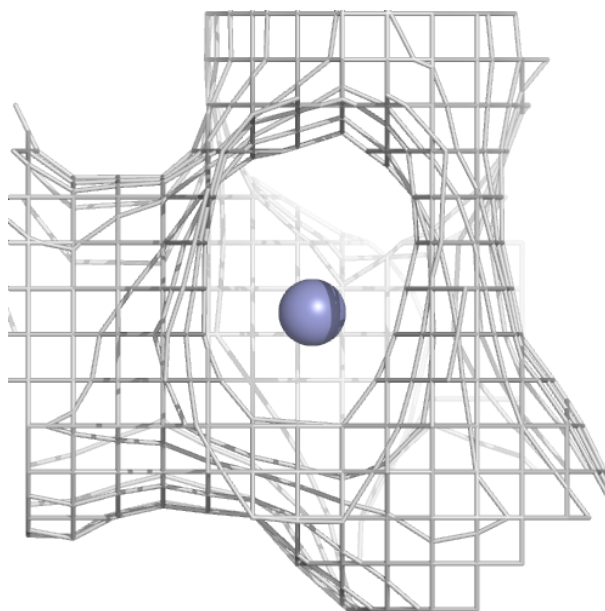
Electron density around NEH A 1243:

$2mF_o-DF_c$ (at 0.7 rmsd) in gray
 mF_o-DF_c (at 3 rmsd) in purple (negative)
and green (positive)



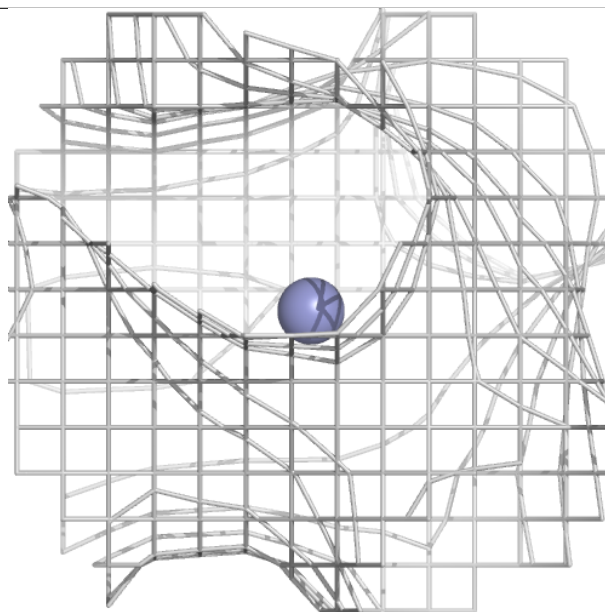
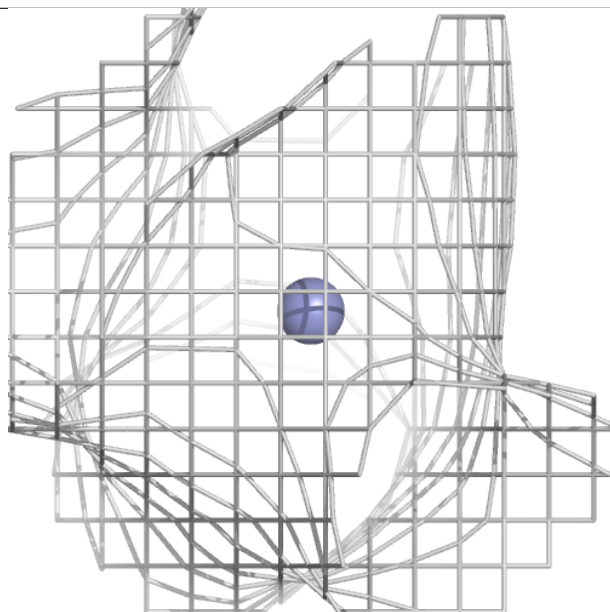
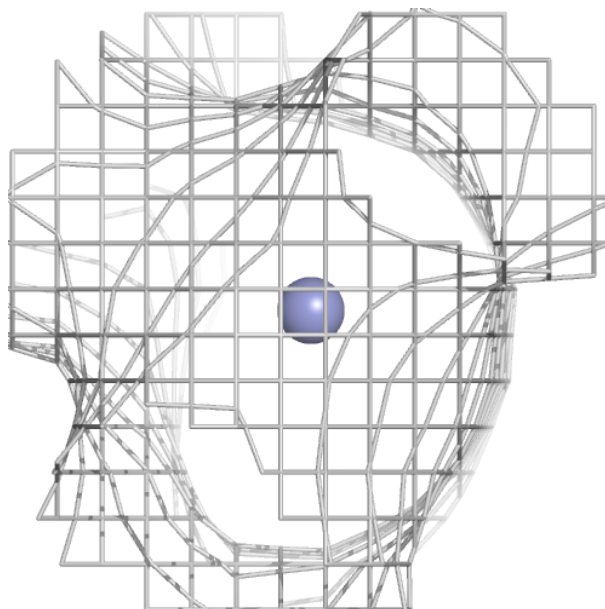
Electron density around ZN A 902:

$2mF_o-DF_c$ (at 0.7 rmsd) in gray
 mF_o-DF_c (at 3 rmsd) in purple (negative)
and green (positive)



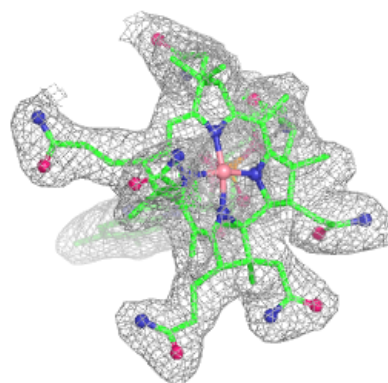
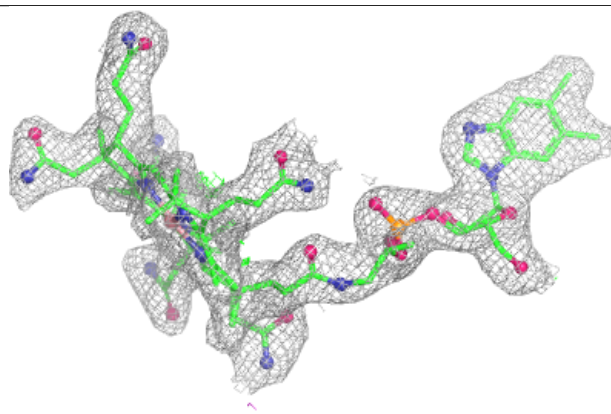
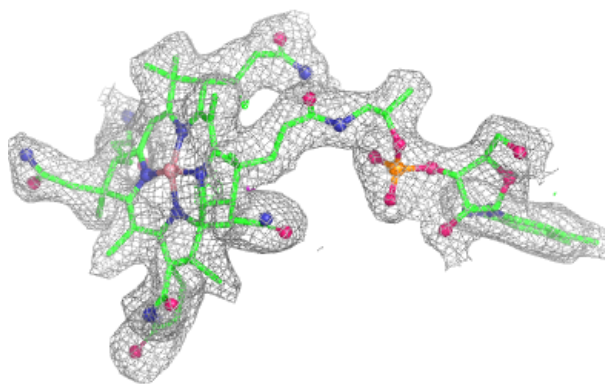
Electron density around ZN A 904:

$2mF_o-DF_c$ (at 0.7 rmsd) in gray
 mF_o-DF_c (at 3 rmsd) in purple (negative)
and green (positive)



Electron density around B12 A 903:

$2mF_o-DF_c$ (at 0.7 rmsd) in gray
 mF_o-DF_c (at 3 rmsd) in purple (negative)
and green (positive)



6.5 Other polymers [i](#)

There are no such residues in this entry.