



Full wwPDB EM Validation Report ⓘ

Mar 8, 2026 – 05:00 AM UTC

PDB ID : 9C7P / pdb_00009c7p
EMDB ID : EMD-45283
Title : Diheteromeric GluN1/GluN2A (delM653) in digitonin complexed with glycine, glutamate, and GNE-4123
Authors : Jalali-Yazdi, F.; Kim, J.; Gouaux, E.
Deposited on : 2024-06-10
Resolution : 4.61 Å(reported)

This is a Full wwPDB EM Validation Report for a publicly released PDB entry.

We welcome your comments at validation@mail.wwpdb.org

A user guide is available at

<https://www.wwpdb.org/validation/2017/EMValidationReportHelp>
with specific help available everywhere you see the ⓘ symbol.

The types of validation reports are described at

<http://www.wwpdb.org/validation/2017/FAQs#types>.

The following versions of software and data (see [references ⓘ](#)) were used in the production of this report:

EMDB validation analysis : 0.0.1.dev132
MolProbity : 4-5-2 with Phenix2.0
Percentile statistics : 20250101.v01 (using entries in the PDB archive January 1st 2025)
EM percentile statistics : 202505.v01 (Using data in the EMDB archive up until May 2025)
MapQ : 1.9.13
Ideal geometry (proteins) : Engh & Huber (2001)
Ideal geometry (DNA, RNA) : Parkinson et al. (1996)
Validation Pipeline (wwPDB-VP) : 2.49

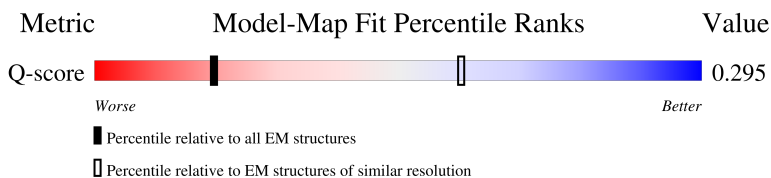
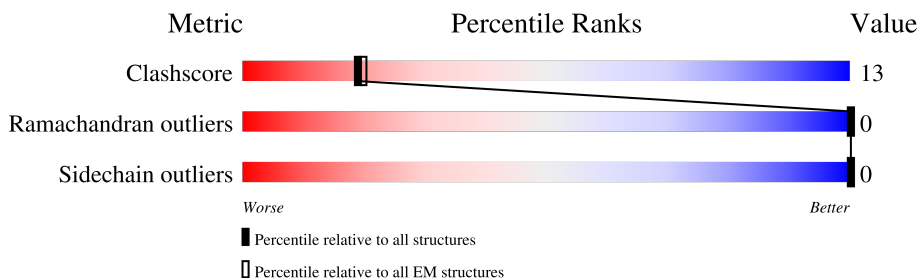
1 Overall quality at a glance

The following experimental techniques were used to determine the structure:

ELECTRON MICROSCOPY

The reported resolution of this entry is 4.61 Å.

Percentile scores (ranging between 0-100) for global validation metrics of the entry are shown in the following graphic. The table shows the number of entries on which the scores are based.



Metric	Whole archive (#Entries)	EM structures (#Entries)	Similar EM resolution (#Entries, resolution range(Å))
Clashscore	229148	23984	-
Ramachandran outliers	224038	23583	-
Sidechain outliers	223484	23102	-
Q-score	-	25397	2098 (4.11 - 5.11)

The table below summarises the geometric issues observed across the polymeric chains and their fit to the map. The red, orange, yellow and green segments of the bar indicate the fraction of residues that contain outliers for ≥ 3 , 2, 1 and 0 types of geometric quality criteria respectively. A grey segment represents the fraction of residues that are not modelled. The numeric value for each fraction is indicated below the corresponding segment, with a dot representing fractions $\leq 5\%$. The upper red bar (where present) indicates the fraction of residues that have poor fit to the EM map (all-atom inclusion $< 40\%$). The numeric value is given above the bar.

Mol	Chain	Length	Quality of chain
1	A	1108	<div> <div>13%</div> <div>51%</div> <div>21%</div> <div>28%</div> </div>
1	C	1108	<div> <div>11%</div> <div>51%</div> <div>21%</div> <div>28%</div> </div>
2	B	1126	<div> <div>11%</div> <div>49%</div> <div>21%</div> <div>30%</div> </div>
2	D	1126	<div> <div>9%</div> <div>49%</div> <div>21%</div> <div>30%</div> </div>

2 Entry composition

There are 2 unique types of molecules in this entry. The entry contains 25132 atoms, of which 0 are hydrogens and 0 are deuteriums.

In the tables below, the AltConf column contains the number of residues with at least one atom in alternate conformation and the Trace column contains the number of residues modelled with at most 2 atoms.

- Molecule 1 is a protein called Glutamate receptor ionotropic, NMDA 1, Green fluorescent protein chimera.

Mol	Chain	Residues	Atoms					AltConf	Trace
1	A	802	Total	C	N	O	S	0	0
			6332	4031	1100	1165	36		
1	C	802	Total	C	N	O	S	0	0
			6332	4031	1100	1165	36		

There are 56 discrepancies between the modelled and reference sequences:

Chain	Residue	Modelled	Actual	Comment	Reference
A	848	LEU	-	linker	UNP P35439
A	849	VAL	-	linker	UNP P35439
A	850	PRO	-	linker	UNP P35439
A	851	ARG	-	linker	UNP P35439
A	852	GLY	-	linker	UNP P35439
A	853	SER	-	linker	UNP P35439
A	854	ALA	-	linker	UNP P35439
A	855	ALA	-	linker	UNP P35439
A	856	ALA	-	linker	UNP P35439
A	857	ALA	-	linker	UNP P35439
A	858	VAL	-	linker	UNP P35439
A	921	LEU	PHE	conflict	UNP P42212
A	922	THR	SER	conflict	UNP P42212
A	1063	LYS	ALA	conflict	UNP P42212
A	1088	LEU	HIS	conflict	UNP P42212
A	1096	SER	-	expression tag	UNP P42212
A	1097	GLY	-	expression tag	UNP P42212
A	1098	LEU	-	expression tag	UNP P42212
A	1099	ARG	-	expression tag	UNP P42212
A	1100	SER	-	expression tag	UNP P42212
A	1101	HIS	-	expression tag	UNP P42212
A	1102	HIS	-	expression tag	UNP P42212
A	1103	HIS	-	expression tag	UNP P42212
A	1104	HIS	-	expression tag	UNP P42212
A	1105	HIS	-	expression tag	UNP P42212

Continued on next page...

Continued from previous page...

Chain	Residue	Modelled	Actual	Comment	Reference
A	1106	HIS	-	expression tag	UNP P42212
A	1107	HIS	-	expression tag	UNP P42212
A	1108	HIS	-	expression tag	UNP P42212
C	848	LEU	-	linker	UNP P35439
C	849	VAL	-	linker	UNP P35439
C	850	PRO	-	linker	UNP P35439
C	851	ARG	-	linker	UNP P35439
C	852	GLY	-	linker	UNP P35439
C	853	SER	-	linker	UNP P35439
C	854	ALA	-	linker	UNP P35439
C	855	ALA	-	linker	UNP P35439
C	856	ALA	-	linker	UNP P35439
C	857	ALA	-	linker	UNP P35439
C	858	VAL	-	linker	UNP P35439
C	921	LEU	PHE	conflict	UNP P42212
C	922	THR	SER	conflict	UNP P42212
C	1063	LYS	ALA	conflict	UNP P42212
C	1088	LEU	HIS	conflict	UNP P42212
C	1096	SER	-	expression tag	UNP P42212
C	1097	GLY	-	expression tag	UNP P42212
C	1098	LEU	-	expression tag	UNP P42212
C	1099	ARG	-	expression tag	UNP P42212
C	1100	SER	-	expression tag	UNP P42212
C	1101	HIS	-	expression tag	UNP P42212
C	1102	HIS	-	expression tag	UNP P42212
C	1103	HIS	-	expression tag	UNP P42212
C	1104	HIS	-	expression tag	UNP P42212
C	1105	HIS	-	expression tag	UNP P42212
C	1106	HIS	-	expression tag	UNP P42212
C	1107	HIS	-	expression tag	UNP P42212
C	1108	HIS	-	expression tag	UNP P42212

- Molecule 2 is a protein called Glutamate receptor ionotropic, NMDA 2A, Green fluorescent protein chimera.

Mol	Chain	Residues	Atoms					AltConf	Trace
2	B	787	Total	C	N	O	S	0	0
			6234	4024	1017	1158	35		
2	D	787	Total	C	N	O	S	0	0
			6234	4024	1017	1158	35		

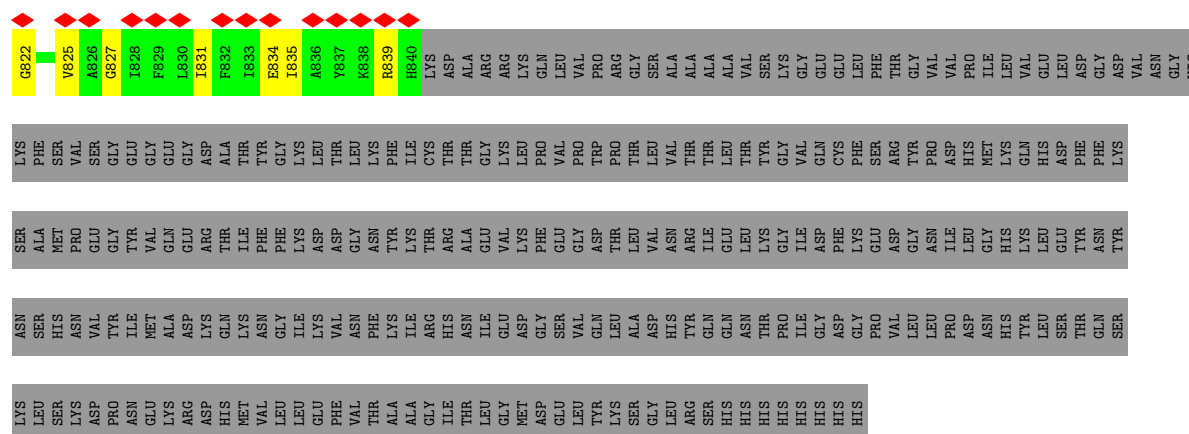
There are 60 discrepancies between the modelled and reference sequences:

Chain	Residue	Modelled	Actual	Comment	Reference
B	?	-	MET	deletion	UNP Q00959
B	757	THR	SER	conflict	UNP Q00959
B	866	LEU	-	linker	UNP Q00959
B	867	VAL	-	linker	UNP Q00959
B	868	PRO	-	linker	UNP Q00959
B	869	ARG	-	linker	UNP Q00959
B	870	GLY	-	linker	UNP Q00959
B	871	SER	-	linker	UNP Q00959
B	872	ALA	-	linker	UNP Q00959
B	873	ALA	-	linker	UNP Q00959
B	874	ALA	-	linker	UNP Q00959
B	875	ALA	-	linker	UNP Q00959
B	876	VAL	-	linker	UNP Q00959
B	939	LEU	PHE	conflict	UNP P42212
B	940	THR	SER	conflict	UNP P42212
B	1081	LYS	ALA	conflict	UNP P42212
B	1106	LEU	HIS	conflict	UNP P42212
B	1114	SER	-	expression tag	UNP P42212
B	1115	GLY	-	expression tag	UNP P42212
B	1116	LEU	-	expression tag	UNP P42212
B	1117	ARG	-	expression tag	UNP P42212
B	1118	SER	-	expression tag	UNP P42212
B	1119	TRP	-	expression tag	UNP P42212
B	1120	SER	-	expression tag	UNP P42212
B	1121	HIS	-	expression tag	UNP P42212
B	1122	PRO	-	expression tag	UNP P42212
B	1123	GLN	-	expression tag	UNP P42212
B	1124	PHE	-	expression tag	UNP P42212
B	1125	GLU	-	expression tag	UNP P42212
B	1126	LYS	-	expression tag	UNP P42212
D	?	-	MET	deletion	UNP Q00959
D	757	THR	SER	conflict	UNP Q00959
D	866	LEU	-	linker	UNP Q00959
D	867	VAL	-	linker	UNP Q00959
D	868	PRO	-	linker	UNP Q00959
D	869	ARG	-	linker	UNP Q00959
D	870	GLY	-	linker	UNP Q00959
D	871	SER	-	linker	UNP Q00959
D	872	ALA	-	linker	UNP Q00959
D	873	ALA	-	linker	UNP Q00959
D	874	ALA	-	linker	UNP Q00959
D	875	ALA	-	linker	UNP Q00959
D	876	VAL	-	linker	UNP Q00959

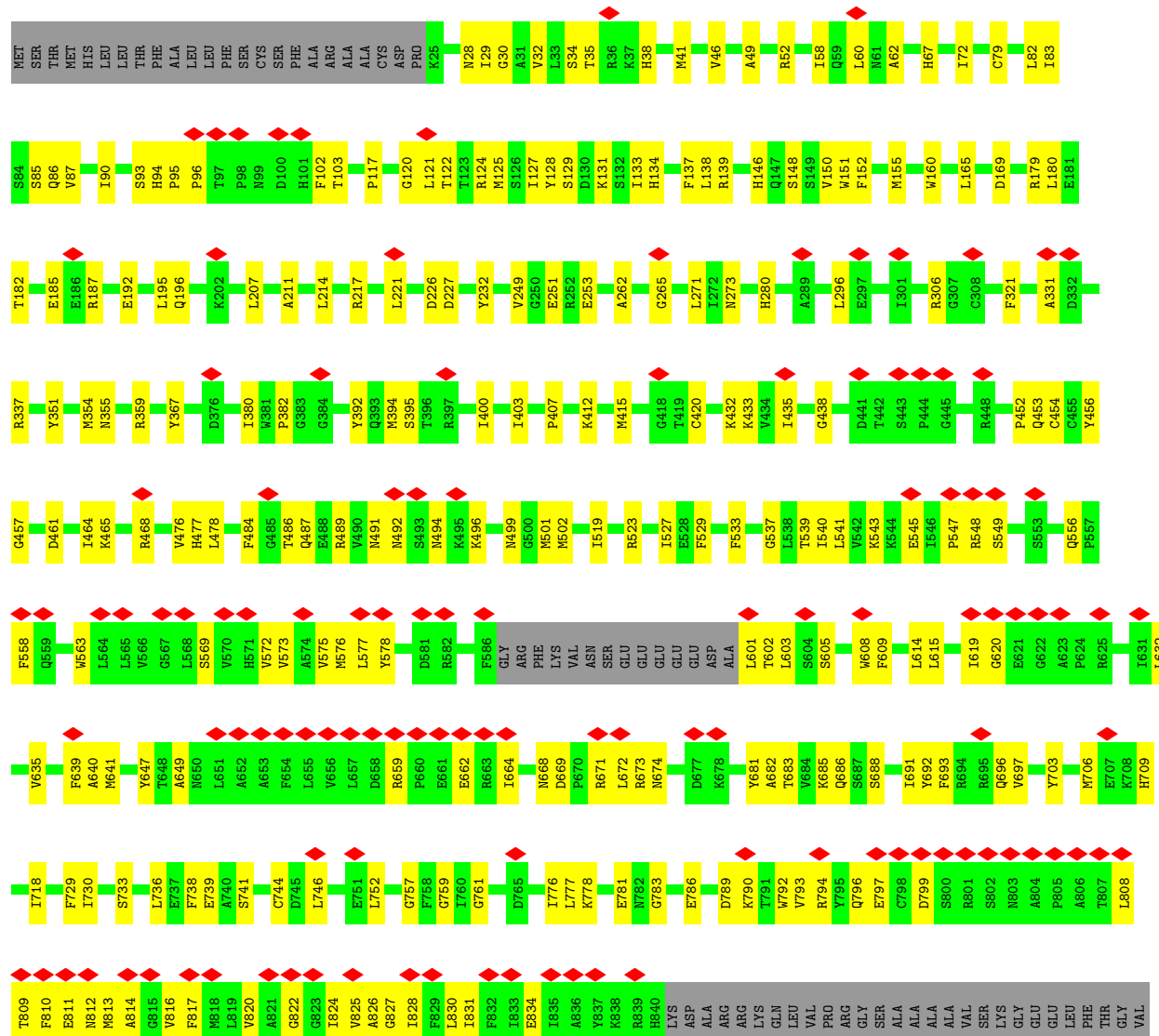
Continued on next page...

Continued from previous page...

Chain	Residue	Modelled	Actual	Comment	Reference
D	939	LEU	PHE	conflict	UNP P42212
D	940	THR	SER	conflict	UNP P42212
D	1081	LYS	ALA	conflict	UNP P42212
D	1106	LEU	HIS	conflict	UNP P42212
D	1114	SER	-	expression tag	UNP P42212
D	1115	GLY	-	expression tag	UNP P42212
D	1116	LEU	-	expression tag	UNP P42212
D	1117	ARG	-	expression tag	UNP P42212
D	1118	SER	-	expression tag	UNP P42212
D	1119	TRP	-	expression tag	UNP P42212
D	1120	SER	-	expression tag	UNP P42212
D	1121	HIS	-	expression tag	UNP P42212
D	1122	PRO	-	expression tag	UNP P42212
D	1123	GLN	-	expression tag	UNP P42212
D	1124	PHE	-	expression tag	UNP P42212
D	1125	GLU	-	expression tag	UNP P42212
D	1126	LYS	-	expression tag	UNP P42212

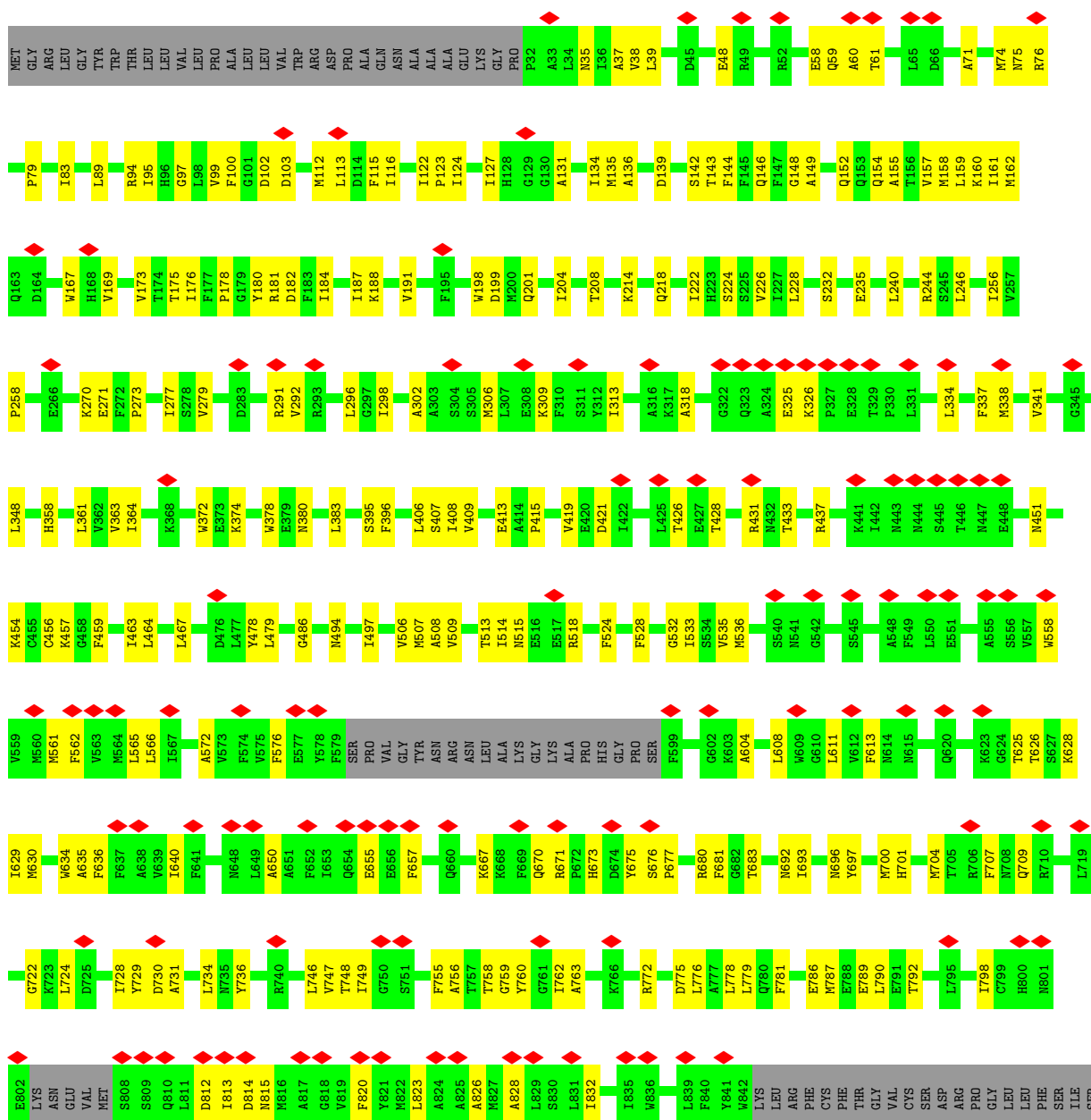


- Molecule 1: Glutamate receptor ionotropic, NMDA 1, Green fluorescent protein chimera



[illegible]

- Chain B: 







4 Experimental information

Property	Value	Source
EM reconstruction method	SINGLE PARTICLE	Depositor
Imposed symmetry	POINT, C1	Depositor
Number of particles used	133000	Depositor
Resolution determination method	FSC 0.143 CUT-OFF	Depositor
CTF correction method	NONE	Depositor
Microscope	FEI TITAN KRIOS	Depositor
Voltage (kV)	300	Depositor
Electron dose ($e^-/\text{\AA}^2$)	50	Depositor
Minimum defocus (nm)	800	Depositor
Maximum defocus (nm)	2000	Depositor
Magnification	Not provided	
Image detector	GATAN K2 QUANTUM (4k x 4k)	Depositor
Maximum map value	0.061	Depositor
Minimum map value	-0.040	Depositor
Average map value	0.000	Depositor
Map value standard deviation	0.003	Depositor
Recommended contour level	0.017	Depositor
Map size (\AA)	313.8, 313.8, 313.8	wwPDB
Map dimensions	300, 300, 300	wwPDB
Map angles ($^\circ$)	90.0, 90.0, 90.0	wwPDB
Pixel spacing (\AA)	1.046, 1.046, 1.046	Depositor

5 Model quality [i](#)

5.1 Standard geometry [i](#)

The Z score for a bond length (or angle) is the number of standard deviations the observed value is removed from the expected value. A bond length (or angle) with $|Z| > 5$ is considered an outlier worth inspection. RMSZ is the root-mean-square of all Z scores of the bond lengths (or angles).

Mol	Chain	Bond lengths		Bond angles	
		RMSZ	$\# Z > 5$	RMSZ	$\# Z > 5$
1	A	0.13	0/6475	0.34	0/8774
1	C	0.14	0/6475	0.36	0/8774
2	B	0.13	0/6387	0.35	0/8678
2	D	0.12	0/6387	0.33	0/8678
All	All	0.13	0/25724	0.34	0/34904

There are no bond length outliers.

There are no bond angle outliers.

There are no chirality outliers.

There are no planarity outliers.

5.2 Too-close contacts [i](#)

In the following table, the Non-H and H(model) columns list the number of non-hydrogen atoms and hydrogen atoms in the chain respectively. The H(added) column lists the number of hydrogen atoms added and optimized by MolProbity. The Clashes column lists the number of clashes within the asymmetric unit, whereas Symm-Clashes lists symmetry-related clashes.

Mol	Chain	Non-H	H(model)	H(added)	Clashes	Symm-Clashes
1	A	6332	0	6306	167	0
1	C	6332	0	6306	178	0
2	B	6234	0	6146	173	0
2	D	6234	0	6146	175	0
All	All	25132	0	24904	641	0

The all-atom clashscore is defined as the number of clashes found per 1000 atoms (including hydrogen atoms). The all-atom clashscore for this structure is 13.

All (641) close contacts within the same asymmetric unit are listed below, sorted by their clash magnitude.

Atom-1	Atom-2	Interatomic distance (Å)	Clash overlap (Å)
2:B:486:GLY:HA2	2:B:494:ASN:O	1.56	1.02
1:C:533:PHE:HB3	1:C:776:ILE:HD11	1.50	0.93
2:B:630:MET:HE1	1:C:824:ILE:HA	1.56	0.87
1:A:762:MET:HE1	1:A:768:TRP:HB2	1.58	0.85
1:A:731:TRP:HB3	1:A:736:LEU:HD11	1.58	0.85
1:A:539:THR:HG23	1:A:736:LEU:HD22	1.65	0.79
1:A:541:LEU:HD11	1:A:746:LEU:HB3	1.64	0.78
2:B:413:GLU:HG3	2:B:415:PRO:HD2	1.65	0.78
1:C:38:HIS:HA	1:C:41:MET:HE3	1.65	0.77
2:B:232:SER:OG	2:B:235:GLU:OE1	2.03	0.75
1:C:573:VAL:HA	1:C:576:MET:SD	2.28	0.74
2:D:279:VAL:HG12	2:D:363:VAL:HG22	1.70	0.74
2:D:697:TYR:HB3	2:D:700:MET:HE2	1.69	0.73
2:D:433:THR:HG22	2:D:457:LYS:HB3	1.71	0.73
2:D:467:LEU:HD13	2:D:774:ILE:HD11	1.70	0.73
1:A:663:ARG:O	1:A:671:ARG:NH2	2.21	0.72
1:C:34:SER:HB2	1:C:96:PRO:HD3	1.71	0.72
1:A:308:CYS:HB3	2:B:79:PRO:HD2	1.72	0.71
1:C:697:VAL:HG12	2:D:431:ARG:HG3	1.71	0.71
2:B:279:VAL:HG22	2:B:363:VAL:HG22	1.73	0.71
2:B:572:ALA:HB1	2:B:576:PHE:HE2	1.55	0.70
1:A:670:PRO:HB3	2:B:798:ILE:HD12	1.73	0.70
2:D:413:GLU:HG3	2:D:415:PRO:HD2	1.74	0.69
1:A:351:TYR:HB2	1:A:367:TYR:HB3	1.75	0.69
2:B:306:MET:HE1	2:B:313:ILE:HA	1.75	0.69
2:B:124:ILE:HB	2:B:144:PHE:HD1	1.59	0.68
1:A:131:LYS:NZ	1:A:137:PHE:O	2.27	0.67
1:C:808:LEU:HB3	1:C:813:MET:HE1	1.75	0.67
1:A:575:VAL:HA	1:A:578:TYR:CE1	2.29	0.67
1:A:507:SER:OG	1:A:509:GLN:OE1	2.12	0.67
1:C:809:THR:HG22	1:C:810:PHE:H	1.59	0.67
1:C:685:LYS:HG2	1:C:686:GLN:HG3	1.77	0.67
2:B:39:LEU:HB3	2:B:74:MET:HE1	1.76	0.67
2:B:789:GLU:HA	2:B:792:THR:HG22	1.76	0.67
2:D:411:LEU:HD11	2:D:484:LYS:HD3	1.78	0.66
2:B:692:ASN:OD1	2:B:696:ASN:ND2	2.29	0.66
1:A:649:ALA:HB1	2:B:650:ALA:HB2	1.78	0.66
1:A:483:LYS:HD2	1:A:686:GLN:HB3	1.77	0.66
2:B:175:THR:HG22	2:B:176:ILE:H	1.61	0.66
2:B:408:ILE:HD12	2:B:507:MET:HB2	1.77	0.66
1:C:486:THR:HG23	1:C:691:ILE:HD11	1.77	0.66
1:A:559:GLN:HB3	1:A:562:LEU:HD13	1.78	0.65

Continued on next page...

Continued from previous page...

Atom-1	Atom-2	Interatomic distance (Å)	Clash overlap (Å)
1:C:155:MET:HG3	1:C:160:TRP:HB2	1.78	0.65
1:C:435:ILE:HD11	1:C:452:PRO:HB2	1.78	0.65
1:A:68:LYS:H	1:A:74:MET:HE1	1.61	0.65
1:C:117:PRO:HG2	1:C:321:PHE:HD2	1.62	0.65
1:A:38:HIS:HA	1:A:41:MET:HE3	1.79	0.64
1:C:148:SER:HB2	1:C:180:LEU:HD13	1.80	0.64
2:B:419:VAL:HG21	2:B:479:LEU:HD21	1.79	0.64
1:A:221:LEU:HD11	1:A:231:VAL:HG21	1.80	0.64
2:B:358:HIS:HD2	2:B:380:ASN:HA	1.63	0.64
1:C:692:TYR:O	1:C:696:GLN:NE2	2.31	0.64
1:C:95:PRO:HD3	1:C:103:THR:HG21	1.80	0.64
1:A:78:VAL:HG21	1:A:107:VAL:HG23	1.78	0.63
1:A:499:ASN:ND2	1:A:686:GLN:OE1	2.32	0.63
2:B:240:LEU:HD13	2:B:273:PRO:HD2	1.80	0.63
2:B:680:ARG:NH2	2:B:722:GLY:O	2.31	0.63
2:B:576:PHE:HD1	1:C:831:ILE:HG21	1.63	0.63
2:B:83:ILE:HG12	2:B:116:ILE:HD11	1.80	0.63
2:D:204:ILE:HD12	2:D:218:GLN:HB3	1.81	0.63
2:D:313:ILE:HD12	2:D:314:PRO:HD2	1.81	0.63
1:A:489:ARG:HH21	1:A:494:ASN:H	1.45	0.63
1:C:519:ILE:HG23	1:C:529:PHE:HD2	1.64	0.63
2:D:161:ILE:HD13	2:D:383:LEU:HD21	1.80	0.63
2:D:288:LEU:HA	2:D:291:ARG:HD2	1.80	0.63
2:D:682:GLY:HA2	2:D:704:MET:HG2	1.81	0.63
2:B:161:ILE:HD11	2:B:363:VAL:HG21	1.79	0.62
1:A:264:ASP:HA	1:A:356:LEU:HD22	1.81	0.62
1:C:674:ASN:HD22	2:D:798:ILE:HD11	1.63	0.62
2:B:576:PHE:CD1	1:C:831:ILE:HG21	2.35	0.62
2:D:264:ASN:ND2	2:D:266:GLU:OE2	2.32	0.62
1:C:718:ILE:HD13	1:C:739:GLU:HG3	1.81	0.62
1:A:78:VAL:HG23	1:A:82:LEU:HD12	1.80	0.62
2:B:421:ASP:OD1	2:B:454:LYS:NZ	2.32	0.62
1:C:124:ARG:NH1	1:C:251:GLU:OE2	2.33	0.62
2:D:408:ILE:HD12	2:D:507:MET:HG2	1.82	0.61
2:B:729:TYR:HB3	2:B:734:LEU:HD21	1.82	0.61
1:C:790:LYS:HA	1:C:794:ARG:HB3	1.82	0.61
1:A:459:CYS:HB3	1:A:514:VAL:HG12	1.81	0.61
2:B:364:ILE:HG22	2:B:374:LYS:HA	1.83	0.61
2:D:364:ILE:HG22	2:D:374:LYS:HA	1.81	0.61
1:A:519:ILE:HG22	2:D:779:LEU:HD11	1.83	0.61
2:B:509:VAL:HG22	2:B:762:ILE:HD12	1.83	0.61

Continued on next page...

Continued from previous page...

Atom-1	Atom-2	Interatomic distance (Å)	Clash overlap (Å)
2:D:442:ILE:HG13	2:D:450:MET:HE1	1.82	0.60
2:B:134:ILE:HD11	2:B:148:GLY:HA3	1.81	0.60
1:C:129:SER:OG	1:C:139:ARG:NH2	2.34	0.60
1:C:195:LEU:HD12	1:C:207:LEU:HD22	1.83	0.60
2:B:152:GLN:NE2	2:B:182:ASP:OD2	2.32	0.60
1:C:499:ASN:ND2	1:C:686:GLN:OE1	2.34	0.60
1:C:668:ASN:HA	1:C:673:ARG:HE	1.65	0.60
1:C:519:ILE:HD11	1:C:759:GLY:HA3	1.83	0.60
1:C:649:ALA:HB1	2:D:650:ALA:HB2	1.82	0.60
2:B:364:ILE:HD12	2:B:372:TRP:HB3	1.83	0.60
1:C:541:LEU:HB2	1:C:736:LEU:HD22	1.83	0.60
2:B:58:GLU:HG3	2:B:60:ALA:H	1.66	0.60
1:C:133:ILE:O	2:D:111:GLN:NE2	2.35	0.60
2:D:574:PHE:CZ	2:D:601:ILE:HA	2.35	0.60
1:A:218:VAL:HG12	1:A:246:VAL:HB	1.83	0.60
1:C:262:ALA:O	1:C:359:ARG:NH1	2.35	0.60
2:D:344:ASP:OD1	2:D:345:GLY:N	2.34	0.59
1:A:148:SER:HA	1:A:151:TRP:HE3	1.65	0.59
2:D:127:ILE:HG23	2:D:291:ARG:HB3	1.83	0.59
1:A:409:VAL:HG13	1:A:460:ILE:HD11	1.85	0.59
2:D:430:VAL:O	2:D:433:THR:OG1	2.17	0.59
1:A:538:LEU:HD23	1:A:754:PHE:HD2	1.68	0.59
1:A:501:MET:HG2	1:A:513:ILE:HD13	1.85	0.59
2:D:99:VAL:HG12	2:D:125:LEU:HB2	1.85	0.58
2:B:683:THR:HB	2:B:728:ILE:HG23	1.83	0.58
1:A:32:VAL:HG12	1:A:65:VAL:HB	1.84	0.58
1:A:486:THR:HB	1:A:691:ILE:HD11	1.85	0.58
2:B:486:GLY:HA3	2:B:497:ILE:HD12	1.85	0.58
1:C:664:ILE:HD11	1:C:671:ARG:HH21	1.69	0.58
2:B:160:LYS:HB3	2:B:383:LEU:HD13	1.84	0.58
2:B:625:THR:HG23	1:C:608:TRP:HZ2	1.69	0.58
2:D:569:SER:O	2:D:573:VAL:HG23	2.02	0.58
2:D:35:ASN:HB2	2:D:95:ILE:HA	1.85	0.58
1:A:500:GLY:O	1:A:503:GLY:N	2.37	0.58
2:D:209:SER:HB2	2:D:212:ASP:HB2	1.86	0.58
1:A:519:ILE:HG23	1:A:529:PHE:HD2	1.69	0.57
2:D:680:ARG:NH2	2:D:722:GLY:O	2.35	0.57
1:A:570:VAL:HG22	1:A:636:TRP:HH2	1.70	0.57
2:B:758:THR:HG22	2:B:759:GLY:H	1.68	0.57
1:A:28:ASN:ND2	1:A:85:SER:OG	2.37	0.57
1:C:28:ASN:ND2	1:C:85:SER:O	2.34	0.57

Continued on next page...

Continued from previous page...

Atom-1	Atom-2	Interatomic distance (Å)	Clash overlap (Å)
1:A:224:SER:HA	1:A:252:ARG:HE	1.69	0.57
1:A:512:MET:HG2	1:A:762:MET:HG2	1.86	0.57
2:B:533:ILE:HG13	2:B:692:ASN:HD22	1.69	0.57
1:A:666:GLY:HA3	1:A:751:GLU:HG2	1.86	0.57
2:B:37:ALA:HB2	2:B:95:ILE:HD13	1.87	0.57
1:A:254:ILE:HG21	1:A:268:GLY:HA3	1.85	0.57
2:D:99:VAL:HB	2:D:127:ILE:HD11	1.87	0.57
1:A:425:THR:OG1	1:A:429:ASP:OD1	2.23	0.56
1:A:683:THR:OG1	1:A:730:ILE:O	2.22	0.56
2:B:246:LEU:HD12	2:D:220:LYS:HB3	1.87	0.56
2:D:535:VAL:HG22	2:D:728:ILE:HD12	1.87	0.56
2:B:565:LEU:HD21	1:C:820:VAL:HG11	1.86	0.56
1:C:635:VAL:HG21	2:D:826:ALA:HB1	1.87	0.56
1:A:562:LEU:HD11	2:B:812:ASP:HA	1.87	0.56
1:A:133:ILE:HD12	2:B:135:MET:HE2	1.87	0.56
1:C:809:THR:N	1:C:812:ASN:OD1	2.37	0.56
2:D:421:ASP:OD1	2:D:454:LYS:NZ	2.38	0.56
2:D:811:LEU:HB3	2:D:816:MET:HE1	1.88	0.56
2:B:626:THR:HG21	1:C:831:ILE:HG22	1.87	0.56
1:C:432:LYS:HD2	1:C:464:ILE:HG21	1.88	0.56
2:D:124:ILE:HB	2:D:144:PHE:HD1	1.68	0.56
1:A:144:TYR:HD1	1:A:147:GLN:HE22	1.54	0.56
1:C:152:PHE:HA	1:C:155:MET:HE2	1.88	0.56
1:C:569:SER:HA	1:C:572:VAL:HG12	1.88	0.56
1:A:425:THR:OG1	1:A:427:ASN:OD1	2.23	0.55
2:B:102:ASP:OD1	2:B:103:ASP:N	2.37	0.55
1:C:226:ASP:OD1	1:C:227:ASP:N	2.39	0.55
2:B:169:VAL:HA	2:B:199:ASP:HB3	1.87	0.55
2:B:772:ARG:HH21	2:B:776:LEU:HD21	1.71	0.55
1:A:561:THR:HG23	1:A:562:LEU:HD12	1.87	0.55
2:B:508:ALA:HB3	2:B:763:ALA:HB3	1.87	0.55
1:C:487:GLN:NE2	1:C:496:LYS:HB3	2.21	0.55
2:B:514:ILE:HG22	1:C:777:LEU:HD11	1.89	0.55
1:C:703:TYR:HA	1:C:706:MET:HB2	1.88	0.55
1:A:685:LYS:HB2	1:A:710:ASN:HB3	1.87	0.55
1:C:221:LEU:HB3	1:C:249:VAL:HG12	1.87	0.55
1:C:556:GLN:OE1	2:D:810:GLN:NE2	2.39	0.55
2:B:513:THR:O	2:B:518:ARG:NH1	2.40	0.55
1:C:150:VAL:HG21	1:C:351:TYR:HD2	1.71	0.55
2:D:721:THR:HG21	2:D:723:LYS:NZ	2.22	0.55
1:A:444:PRO:HA	1:A:448:ARG:HH22	1.72	0.54

Continued on next page...

Continued from previous page...

Atom-1	Atom-2	Interatomic distance (Å)	Clash overlap (Å)
2:B:139:ASP:HB3	2:B:142:SER:HB3	1.89	0.54
1:C:72:ILE:HD11	2:D:119:GLN:HB3	1.88	0.54
1:C:403:ILE:HG21	1:C:484:PHE:HE1	1.72	0.54
2:B:270:LYS:NZ	2:B:271:GLU:OE1	2.35	0.54
2:B:433:THR:HA	2:B:457:LYS:HB3	1.89	0.54
2:B:611:LEU:HD23	2:B:634:TRP:HD1	1.71	0.54
2:D:130:GLY:HA2	2:D:133:MET:HE3	1.90	0.54
2:B:191:VAL:HG23	2:B:198:TRP:HB2	1.90	0.54
2:B:700:MET:O	2:B:704:MET:HG2	2.08	0.54
1:C:783:GLY:HA2	1:C:786:GLU:OE2	2.08	0.54
2:D:294:ASP:O	2:D:298:ILE:HG12	2.07	0.54
1:A:608:TRP:HZ2	2:D:625:THR:HG23	1.72	0.54
2:D:528:PHE:HB2	2:D:787:MET:HE2	1.90	0.54
1:C:519:ILE:HG12	1:C:757:GLY:O	2.07	0.54
2:D:508:ALA:HB3	2:D:763:ALA:HB3	1.90	0.54
1:A:718:ILE:HA	1:A:721:VAL:HG22	1.89	0.54
2:B:437:ARG:HE	2:B:451:ASN:HB3	1.73	0.54
1:C:496:LYS:HD2	2:D:193:ASN:HA	1.88	0.53
1:A:322:LYS:O	1:A:326:MET:HG2	2.09	0.53
1:A:694:ARG:NH2	1:A:703:TYR:OH	2.40	0.53
1:C:117:PRO:HG2	1:C:321:PHE:CD2	2.43	0.53
1:C:489:ARG:HE	2:D:425:LEU:HD12	1.72	0.53
2:D:574:PHE:CZ	2:D:604:ALA:HB3	2.43	0.53
1:A:39:GLU:HG2	1:A:64:SER:HB3	1.90	0.53
2:D:273:PRO:HD2	2:D:276:LEU:HD11	1.90	0.53
2:D:538:SER:HA	2:D:746:LEU:HD23	1.91	0.53
1:C:131:LYS:HB3	2:D:178:PRO:HB3	1.89	0.53
1:C:211:ALA:HA	1:C:214:LEU:HD12	1.90	0.53
2:B:676:SER:OG	2:B:677:PRO:HD3	2.09	0.53
1:A:299:GLU:HG2	1:A:300:ASN:H	1.73	0.53
1:A:580:LEU:HD22	1:A:629:ALA:HB2	1.90	0.53
2:B:536:MET:SD	2:B:746:LEU:HB3	2.49	0.53
1:C:354:MET:HE2	1:C:354:MET:HA	1.91	0.53
1:C:49:ALA:HA	1:C:52:ARG:HG2	1.90	0.52
1:C:697:VAL:HB	2:D:432:ASN:HD22	1.74	0.52
1:A:415:MET:HE2	1:A:417:ASP:H	1.74	0.52
1:C:489:ARG:NH2	2:D:425:LEU:O	2.43	0.52
1:A:827:GLY:O	1:A:831:ILE:HG13	2.10	0.52
2:B:75:ASN:OD1	2:B:76:ARG:N	2.43	0.52
2:D:210:PHE:O	2:D:215:THR:OG1	2.20	0.52
1:A:235:ALA:HB1	1:A:240:MET:HB2	1.89	0.52

Continued on next page...

Continued from previous page...

Atom-1	Atom-2	Interatomic distance (Å)	Clash overlap (Å)
1:A:573:VAL:O	1:A:577:LEU:HD23	2.09	0.52
2:B:463:ILE:O	2:B:467:LEU:HG	2.09	0.52
1:C:541:LEU:HD11	1:C:746:LEU:HB3	1.92	0.52
2:D:505:ALA:O	2:D:765:GLN:NE2	2.42	0.52
2:B:730:ASP:OD1	2:B:760:TYR:OH	2.26	0.52
1:C:400:ILE:HB	1:C:476:VAL:HA	1.90	0.52
1:C:35:THR:OG1	1:C:38:HIS:ND1	2.43	0.52
1:C:150:VAL:HG21	1:C:351:TYR:CD2	2.45	0.52
1:C:523:ARG:NH1	1:C:688:SER:OG	2.42	0.52
1:C:394:MET:HE3	1:C:395:SER:N	2.24	0.52
2:D:540:SER:HB2	2:D:660:GLN:NE2	2.25	0.52
2:B:89:LEU:HB3	2:B:95:ILE:HD12	1.92	0.52
2:B:459:PHE:O	2:B:463:ILE:HG12	2.10	0.51
2:B:566:LEU:HD11	2:B:608:LEU:HB3	1.91	0.51
2:B:681:PHE:CE2	2:B:704:MET:HE1	2.45	0.51
2:D:343:TRP:CG	2:D:344:ASP:H	2.28	0.51
2:D:829:LEU:HA	2:D:832:ILE:HG22	1.91	0.51
1:A:697:VAL:HG21	2:B:431:ARG:HH21	1.76	0.51
1:C:433:LYS:HD2	1:C:454:CYS:HB2	1.92	0.51
2:B:173:VAL:HA	2:B:204:ILE:HB	1.92	0.51
1:C:120:GLY:N	1:C:138:LEU:O	2.41	0.51
1:C:659:ARG:HB3	1:C:662:GLU:HB3	1.93	0.51
2:D:415:PRO:HB3	2:D:736:TYR:CG	2.46	0.51
2:D:462:ASP:O	2:D:466:LYS:HG2	2.10	0.51
1:C:573:VAL:O	1:C:577:LEU:HD23	2.09	0.51
2:B:35:ASN:HB2	2:B:95:ILE:HA	1.92	0.51
1:C:87:VAL:HG21	1:C:90:ILE:HD11	1.92	0.51
2:D:302:ALA:HB1	2:D:334:LEU:HD12	1.92	0.51
2:D:488:LYS:HD3	2:D:493:TRP:NE1	2.25	0.51
1:A:70:ASN:HD21	1:A:73:GLN:HG3	1.75	0.51
2:B:681:PHE:CD2	2:B:704:MET:HE1	2.46	0.50
2:D:161:ILE:HD11	2:D:363:VAL:HG21	1.92	0.50
1:A:403:ILE:HG12	1:A:484:PHE:HE1	1.76	0.50
2:B:325:GLU:HG2	2:B:326:LYS:HG2	1.94	0.50
1:C:94:HIS:ND1	1:C:95:PRO:O	2.44	0.50
2:D:442:ILE:HD12	2:D:449:GLY:HA2	1.93	0.50
2:B:292:VAL:O	2:B:296:LEU:HG	2.09	0.50
2:B:406:LEU:HD22	2:B:506:VAL:HG11	1.93	0.50
2:D:608:LEU:O	2:D:612:VAL:HG23	2.11	0.50
1:A:822:GLY:HA2	1:A:825:VAL:HG22	1.94	0.50
1:C:572:VAL:HA	1:C:575:VAL:HG22	1.92	0.50

Continued on next page...

Continued from previous page...

Atom-1	Atom-2	Interatomic distance (Å)	Clash overlap (Å)
1:C:669:ASP:HB3	1:C:672:LEU:HD23	1.93	0.50
1:C:733:SER:HB3	1:C:752:LEU:HD11	1.93	0.50
1:A:140:THR:O	1:A:346:ARG:NH1	2.40	0.50
1:A:302:THR:O	1:A:315:TRP:NE1	2.41	0.50
1:C:543:LYS:HG3	1:C:545:GLU:H	1.77	0.50
1:A:154:MET:HE1	1:A:267:ILE:HG21	1.92	0.50
2:B:419:VAL:HG22	2:B:456:CYS:HB3	1.93	0.50
1:C:273:ASN:O	1:C:280:HIS:NE2	2.45	0.50
2:B:100:PHE:CD2	2:B:113:LEU:HD11	2.47	0.50
1:C:457:GLY:HA2	1:C:792:TRP:CZ3	2.47	0.50
1:A:166:LEU:HD13	1:A:195:LEU:HB2	1.93	0.50
2:B:298:ILE:HD11	2:B:348:LEU:HD12	1.93	0.50
2:B:693:ILE:HG22	2:B:701:HIS:HB2	1.93	0.50
2:D:535:VAL:HB	2:D:749:ILE:HG12	1.94	0.49
1:A:111:ALA:HB1	1:A:116:ILE:HB	1.93	0.49
1:A:364:VAL:HG11	1:A:379:ILE:HD13	1.94	0.49
1:A:463:LEU:HD12	1:A:514:VAL:HG21	1.95	0.49
2:D:683:THR:HG22	2:D:728:ILE:HB	1.93	0.49
1:C:632:LEU:HA	1:C:635:VAL:HG22	1.95	0.49
2:D:56:GLY:N	2:D:57:PRO:HD3	2.27	0.49
1:A:106:PRO:HG3	2:B:115:PHE:CZ	2.47	0.49
1:A:152:PHE:O	1:A:155:MET:HG3	2.12	0.49
1:A:569:SER:HA	1:A:572:VAL:HG12	1.93	0.49
2:B:667:LYS:NZ	2:B:675:TYR:OH	2.42	0.49
2:D:532:GLY:HA3	2:D:754:ILE:HG23	1.94	0.49
1:C:102:PHE:HE2	1:C:125:MET:HG2	1.78	0.49
1:C:826:ALA:O	1:C:830:LEU:HD23	2.12	0.49
1:A:641:MET:HG3	2:B:613:PHE:HB2	1.95	0.49
2:B:204:ILE:HG13	2:B:222:ILE:HD11	1.95	0.49
2:B:814:ASP:OD1	2:B:815:ASN:N	2.46	0.49
2:D:177:PHE:CG	2:D:178:PRO:HD2	2.47	0.49
2:D:282:ASP:N	2:D:282:ASP:OD1	2.45	0.49
2:B:463:ILE:HD12	2:B:787:MET:HE1	1.93	0.49
2:D:667:LYS:HA	2:D:670:GLN:HB2	1.95	0.49
2:D:358:HIS:CE1	2:D:381:GLN:HE22	2.31	0.48
1:A:71:ALA:HB1	2:B:115:PHE:HZ	1.77	0.48
1:A:106:PRO:HG3	2:B:115:PHE:HZ	1.79	0.48
2:D:521:VAL:HG12	2:D:522:VAL:HG13	1.93	0.48
1:A:790:LYS:HA	1:A:794:ARG:HB3	1.96	0.48
2:B:94:ARG:HH22	2:B:318:ALA:HA	1.77	0.48
2:D:709:GLN:HG2	2:D:715:ALA:HB2	1.95	0.48

Continued on next page...

Continued from previous page...

Atom-1	Atom-2	Interatomic distance (Å)	Clash overlap (Å)
1:A:249:VAL:HB	1:A:253:GLU:HB2	1.95	0.48
1:A:41:MET:HA	1:A:44:GLU:HG3	1.94	0.48
2:B:95:ILE:HG22	2:B:97:GLY:H	1.78	0.48
1:C:744:CYS:HB2	1:C:797:GLU:OE2	2.13	0.48
2:B:467:LEU:HD23	2:B:781:PHE:HE2	1.77	0.48
2:B:572:ALA:HB1	2:B:576:PHE:CE2	2.43	0.48
2:D:532:GLY:O	2:D:731:ALA:N	2.38	0.48
2:D:536:MET:HE1	2:D:738:ALA:HB2	1.95	0.48
2:D:172:LEU:O	2:D:204:ILE:N	2.44	0.48
2:B:157:VAL:O	2:B:161:ILE:HG12	2.14	0.48
2:D:608:LEU:HA	2:D:634:TRP:HE1	1.79	0.48
1:A:624:PRO:HG2	1:A:630:ARG:HD2	1.96	0.48
2:B:184:ILE:HA	2:B:187:ILE:HG22	1.94	0.48
2:B:279:VAL:HG12	2:B:361:LEU:HD12	1.95	0.48
2:B:561:MET:SD	1:C:817:PHE:HE1	2.37	0.48
1:C:29:ILE:HD11	1:C:60:LEU:HD12	1.96	0.48
1:C:697:VAL:O	2:D:432:ASN:ND2	2.47	0.48
2:D:34:LEU:HB2	2:D:65:LEU:HD21	1.96	0.48
1:A:144:TYR:O	1:A:147:GLN:OE1	2.31	0.48
1:A:407:PRO:HG3	1:A:735:VAL:HA	1.95	0.48
2:B:611:LEU:HD21	2:B:635:ALA:HB2	1.96	0.48
2:D:160:LYS:HB3	2:D:383:LEU:HD22	1.95	0.48
2:B:162:MET:HE1	2:B:228:LEU:HD21	1.95	0.47
1:C:146:HIS:HA	1:C:179:ARG:HH12	1.79	0.47
1:C:693:PHE:HE2	1:C:730:ILE:HG21	1.78	0.47
1:A:400:ILE:HB	1:A:476:VAL:HA	1.96	0.47
2:B:48:GLU:HG2	2:B:71:ALA:HB3	1.95	0.47
2:D:150:SER:N	2:D:153:GLN:OE1	2.44	0.47
1:A:604:SER:HG	1:A:608:TRP:CD1	2.32	0.47
1:A:777:LEU:HD11	2:D:514:ILE:HG22	1.97	0.47
1:C:217:ARG:HG2	1:C:392:TYR:HA	1.97	0.47
2:D:134:ILE:HA	2:D:146:GLN:HE22	1.77	0.47
1:A:248:LEU:HD13	1:A:267:ILE:HB	1.95	0.47
2:B:378:TRP:HD1	2:B:383:LEU:HB2	1.79	0.47
1:C:125:MET:O	1:C:139:ARG:NH1	2.37	0.47
2:D:116:ILE:O	2:D:120:THR:OG1	2.23	0.47
2:D:457:LYS:O	2:D:461:ILE:HD13	2.15	0.47
2:D:659:ASP:N	2:D:659:ASP:OD1	2.48	0.47
2:B:515:ASN:HA	1:C:777:LEU:HD21	1.97	0.47
1:C:34:SER:OG	1:C:38:HIS:ND1	2.48	0.47
1:C:125:MET:HG3	1:C:127:ILE:HG22	1.96	0.47

Continued on next page...

Continued from previous page...

Atom-1	Atom-2	Interatomic distance (Å)	Clash overlap (Å)
2:D:157:VAL:HG23	2:D:279:VAL:HG11	1.96	0.47
1:A:375:ASN:HD21	1:A:377:ARG:HG2	1.79	0.47
1:A:533:PHE:HA	1:A:780:HIS:NE2	2.30	0.47
1:C:271:LEU:HD13	1:C:351:TYR:HE1	1.79	0.47
2:D:145:PHE:HE2	2:D:338:MET:HB2	1.80	0.47
2:D:257:VAL:HB	2:D:261:VAL:HG21	1.95	0.47
2:D:561:MET:HE3	2:D:637:PHE:HZ	1.78	0.47
1:A:132:SER:HB3	2:B:178:PRO:HB2	1.97	0.47
1:A:573:VAL:HA	1:A:576:MET:HG2	1.97	0.47
1:A:706:MET:HA	1:A:706:MET:HE2	1.96	0.47
2:B:122:ILE:HG23	2:B:124:ILE:HD11	1.96	0.47
2:B:528:PHE:HB3	2:B:778:LEU:HD12	1.97	0.47
1:A:49:ALA:HA	1:A:52:ARG:HG2	1.95	0.47
1:A:411:VAL:HA	1:A:454:CYS:O	2.15	0.47
2:B:273:PRO:HB3	2:B:396:PHE:CE1	2.49	0.47
2:D:298:ILE:HD11	2:D:348:LEU:HB2	1.97	0.47
2:D:411:LEU:HB2	2:D:496:MET:HE2	1.97	0.47
1:A:195:LEU:HD23	1:A:207:LEU:HD12	1.97	0.47
1:A:540:ILE:HD13	1:A:750:GLY:HA3	1.97	0.47
1:C:403:ILE:HG21	1:C:484:PHE:CE1	2.50	0.47
2:B:514:ILE:HG23	2:B:524:PHE:HD2	1.79	0.46
1:A:99:ASN:HD22	1:A:101:HIS:CE1	2.32	0.46
2:B:309:LYS:HD3	2:B:337:PHE:HE1	1.81	0.46
1:C:548:ARG:HA	1:C:548:ARG:NE	2.30	0.46
2:D:206:LEU:HD11	2:D:219:LEU:HD21	1.97	0.46
1:A:456:TYR:C	1:A:460:ILE:HD13	2.40	0.46
2:B:707:PHE:O	2:B:709:GLN:NE2	2.44	0.46
1:C:148:SER:HA	1:C:151:TRP:CE3	2.50	0.46
1:C:461:ASP:O	1:C:464:ILE:HG22	2.16	0.46
1:A:627:PHE:O	1:A:631:ILE:HD12	2.16	0.46
1:A:805:PRO:HG2	2:D:652:PHE:CE1	2.50	0.46
1:A:204:VAL:HG22	1:A:207:LEU:HB2	1.98	0.46
2:B:828:ALA:O	2:B:832:ILE:HG12	2.16	0.46
1:C:814:ALA:HA	1:C:817:PHE:CD2	2.50	0.46
2:D:191:VAL:HG23	2:D:198:TRP:HB3	1.98	0.46
1:A:562:LEU:HG	2:B:813:ILE:HD13	1.96	0.46
1:A:835:ILE:O	1:A:839:ARG:HG2	2.16	0.46
2:B:636:PHE:CE2	2:B:640:ILE:HD11	2.51	0.46
2:B:758:THR:HG22	2:B:759:GLY:N	2.31	0.46
1:C:355:ASN:HD21	1:C:380:ILE:H	1.64	0.46
1:C:465:LYS:NZ	1:C:468:ARG:HH21	2.13	0.46

Continued on next page...

Continued from previous page...

Atom-1	Atom-2	Interatomic distance (Å)	Clash overlap (Å)
1:C:641:MET:HG3	2:D:613:PHE:HB2	1.98	0.46
1:C:182:THR:O	1:C:185:GLU:HG3	2.16	0.46
1:A:754:PHE:HE1	2:D:783:GLY:HA2	1.81	0.46
1:C:407:PRO:HB3	1:C:738:PHE:CD2	2.51	0.46
1:C:558:PHE:CE1	1:C:647:TYR:HB2	2.50	0.46
2:D:235:GLU:O	2:D:239:ILE:HG12	2.16	0.46
2:B:244:ARG:HD2	2:B:396:PHE:CE1	2.51	0.46
1:C:131:LYS:HE2	1:C:131:LYS:HA	1.97	0.46
2:D:94:ARG:NH2	2:D:317:LYS:O	2.48	0.46
1:C:438:GLY:HA3	1:C:478:LEU:HB2	1.98	0.45
1:C:778:LYS:O	1:C:781:GLU:HG3	2.16	0.45
2:D:34:LEU:CB	2:D:65:LEU:HD21	2.46	0.45
1:A:113:PHE:HD2	2:B:79:PRO:HG3	1.80	0.45
2:B:131:ALA:O	2:B:146:GLN:NE2	2.36	0.45
1:C:558:PHE:HB2	1:C:563:TRP:NE1	2.32	0.45
2:D:55:TRP:NE1	2:D:67:VAL:HB	2.31	0.45
2:D:184:ILE:HA	2:D:187:ILE:HG22	1.97	0.45
2:B:772:ARG:O	2:B:776:LEU:HD23	2.16	0.45
1:C:489:ARG:NH1	1:C:494:ASN:OD1	2.50	0.45
2:D:272:PHE:O	2:D:370:ARG:NH1	2.45	0.45
1:A:177:GLN:O	1:A:181:GLU:OE1	2.33	0.45
1:A:186:GLU:OE2	1:A:186:GLU:N	2.43	0.45
1:A:566:VAL:O	1:A:570:VAL:HG23	2.17	0.45
1:A:610:SER:HA	1:A:636:TRP:HE1	1.82	0.45
2:B:59:GLN:O	2:B:61:THR:HG23	2.15	0.45
2:D:155:ALA:HA	2:D:158:MET:HG3	1.97	0.45
1:A:108:SER:HA	1:A:118:VAL:HG21	1.98	0.45
1:A:570:VAL:HG22	1:A:636:TRP:CH2	2.50	0.45
2:B:309:LYS:HD3	2:B:337:PHE:CE1	2.51	0.45
1:C:822:GLY:HA2	1:C:825:VAL:HG12	1.97	0.45
2:D:539:ARG:HD3	2:D:657:PHE:CE2	2.52	0.45
1:A:71:ALA:O	1:A:74:MET:HB2	2.17	0.45
2:D:599:PHE:HA	2:D:603:LYS:HD2	1.97	0.45
2:D:196:VAL:HB	2:D:198:TRP:NE1	2.31	0.45
1:A:91:LEU:HA	1:A:119:LEU:HB2	1.98	0.45
2:B:112:MET:HA	2:B:112:MET:HE2	1.98	0.45
1:C:477:HIS:ND1	1:C:478:LEU:O	2.49	0.45
1:C:639:PHE:CE2	2:D:819:VAL:HG12	2.52	0.45
2:D:378:TRP:CZ2	2:D:381:GLN:HA	2.52	0.45
2:D:496:MET:HG3	2:D:512:LEU:HD11	1.98	0.45
2:D:667:LYS:HA	2:D:667:LYS:HD2	1.69	0.45

Continued on next page...

Continued from previous page...

Atom-1	Atom-2	Interatomic distance (Å)	Clash overlap (Å)
1:A:165:LEU:HD22	1:A:180:LEU:HD23	1.99	0.45
1:C:150:VAL:HG22	1:C:367:TYR:CE2	2.51	0.45
1:C:529:PHE:HD1	1:C:761:GLY:HA2	1.80	0.45
1:A:45:ALA:HB1	1:A:285:VAL:HG21	1.99	0.45
2:B:415:PRO:HB3	2:B:736:TYR:CG	2.52	0.45
1:C:192:GLU:OE1	1:C:214:LEU:HD22	2.17	0.45
2:B:406:LEU:HD22	2:B:506:VAL:HG21	1.98	0.44
2:B:629:ILE:HG13	1:C:608:TRP:HH2	1.82	0.44
1:C:30:GLY:O	1:C:90:ILE:HA	2.18	0.44
1:C:412:LYS:O	1:C:453:GLN:HB3	2.18	0.44
2:D:419:VAL:HG22	2:D:456:CYS:SG	2.57	0.44
2:D:487:LYS:N	2:D:494:ASN:OD1	2.50	0.44
2:D:533:ILE:HG13	2:D:755:PHE:HB3	1.99	0.44
1:A:77:SER:O	1:A:81:ASP:HB2	2.17	0.44
1:A:543:LYS:HA	1:A:746:LEU:HD13	1.98	0.44
1:A:683:THR:HG22	1:A:706:MET:SD	2.57	0.44
2:B:302:ALA:HB1	2:B:334:LEU:HD12	2.00	0.44
2:B:635:ALA:HB3	1:C:615:LEU:HD13	1.99	0.44
1:A:111:ALA:O	1:A:116:ILE:N	2.50	0.44
1:A:799:ASP:HB2	1:A:801:ARG:HG2	1.99	0.44
2:B:532:GLY:O	2:B:731:ALA:N	2.50	0.44
1:C:813:MET:HB2	1:C:816:VAL:HG22	1.99	0.44
1:A:731:TRP:HB3	1:A:736:LEU:CD1	2.39	0.44
2:B:240:LEU:HD23	2:B:240:LEU:HA	1.79	0.44
2:B:775:ASP:O	2:B:779:LEU:HD23	2.17	0.44
1:C:602:THR:N	1:C:605:SER:OG	2.50	0.44
1:A:26:ILE:HD11	1:A:61:ASN:HB2	1.99	0.44
1:A:525:GLN:HG2	2:D:776:LEU:HD11	1.99	0.44
1:C:72:ILE:HD12	1:C:72:ILE:H	1.82	0.44
2:D:65:LEU:HD12	2:D:307:LEU:HD11	1.99	0.44
2:D:83:ILE:HA	2:D:86:VAL:HG12	1.99	0.44
2:B:127:ILE:HG23	2:B:291:ARG:HB3	1.98	0.44
2:B:536:MET:HG2	2:B:747:VAL:C	2.43	0.44
1:C:165:LEU:HD11	1:C:180:LEU:HD23	1.99	0.44
1:A:133:ILE:HD11	2:B:136:ALA:H	1.82	0.44
1:C:461:ASP:HA	1:C:464:ILE:HG22	1.99	0.44
1:C:540:ILE:HD12	1:C:730:ILE:HG13	2.00	0.44
1:A:739:GLU:O	1:A:743:LYS:N	2.48	0.43
1:C:253:GLU:OE1	1:C:253:GLU:N	2.50	0.43
1:C:271:LEU:HD13	1:C:351:TYR:CE1	2.53	0.43
2:D:437:ARG:HD2	2:D:451:ASN:HB3	1.99	0.43

Continued on next page...

Continued from previous page...

Atom-1	Atom-2	Interatomic distance (Å)	Clash overlap (Å)
1:A:375:ASN:ND2	1:A:377:ARG:HG2	2.33	0.43
2:B:514:ILE:HG12	2:B:524:PHE:CD2	2.53	0.43
1:C:331:ALA:HA	1:C:337:ARG:HH12	1.83	0.43
2:D:173:VAL:HA	2:D:204:ILE:HB	2.00	0.43
2:D:459:PHE:O	2:D:463:ILE:HG12	2.17	0.43
2:D:719:LEU:HB3	2:D:746:LEU:HD21	2.00	0.43
1:A:86:GLN:OE1	1:A:306:ARG:NE	2.49	0.43
2:B:123:PRO:HA	2:B:143:THR:HG23	2.00	0.43
2:B:154:GLN:O	2:B:158:MET:HG2	2.18	0.43
2:B:155:ALA:O	2:B:159:LEU:HD23	2.17	0.43
2:B:208:THR:HG21	2:B:214:LYS:HB3	2.00	0.43
1:A:140:THR:OG1	1:A:346:ARG:NH1	2.51	0.43
1:A:778:LYS:O	1:A:781:GLU:HG2	2.18	0.43
2:B:630:MET:HE2	1:C:827:GLY:HA3	2.01	0.43
1:C:30:GLY:HA3	1:C:82:LEU:HD22	1.99	0.43
1:C:796:GLN:OE1	1:C:799:ASP:HB2	2.17	0.43
2:B:395:SER:OG	2:B:396:PHE:N	2.51	0.43
1:C:541:LEU:HD21	1:C:746:LEU:HD13	2.00	0.43
2:D:549:PHE:HZ	2:D:822:MET:HG3	1.83	0.43
1:A:504:GLU:HB3	1:A:509:GLN:HB2	2.00	0.43
2:B:38:VAL:HG12	2:B:99:VAL:HB	2.01	0.43
2:B:201:GLN:OE1	2:B:224:SER:HB2	2.18	0.43
1:C:668:ASN:OD1	1:C:673:ARG:NH2	2.41	0.43
2:B:409:VAL:HA	2:B:478:TYR:O	2.18	0.43
1:C:539:THR:HG22	1:C:540:ILE:N	2.34	0.43
2:D:38:VAL:HG23	2:D:99:VAL:HG23	1.99	0.43
1:A:151:TRP:CD1	1:A:248:LEU:HD12	2.53	0.43
1:A:527:ILE:HB	1:A:762:MET:O	2.18	0.43
2:B:786:GLU:O	2:B:790:LEU:HD23	2.18	0.43
1:C:578:TYR:CE2	1:C:603:LEU:HB2	2.53	0.43
2:D:463:ILE:O	2:D:467:LEU:HG	2.19	0.43
2:D:487:LYS:HD2	2:D:686:ASN:HA	2.01	0.43
1:A:553:SER:HA	1:A:556:GLN:HG2	2.01	0.43
1:A:669:ASP:OD1	1:A:672:LEU:HB3	2.19	0.43
2:B:180:TYR:OH	2:B:181:ARG:NH1	2.51	0.43
2:D:540:SER:HB2	2:D:660:GLN:HE22	1.81	0.43
2:D:553:PHE:O	2:D:558:TRP:NE1	2.52	0.43
1:A:487:GLN:HB3	1:A:496:LYS:HZ2	1.84	0.43
1:A:657:LEU:H	1:A:657:LEU:HD23	1.84	0.43
2:B:112:MET:O	2:B:116:ILE:HG12	2.19	0.43
2:B:779:LEU:HD11	1:C:519:ILE:HG22	2.00	0.43

Continued on next page...

Continued from previous page...

Atom-1	Atom-2	Interatomic distance (Å)	Clash overlap (Å)
2:D:51:LEU:HA	2:D:54:LEU:HD12	2.01	0.43
2:D:402:ASP:N	2:D:402:ASP:OD1	2.47	0.43
2:D:792:THR:O	2:D:796:THR:OG1	2.32	0.43
1:A:554:PHE:O	1:A:647:TYR:OH	2.24	0.42
1:C:415:MET:HG2	1:C:420:CYS:HA	2.01	0.42
2:D:306:MET:HE1	2:D:313:ILE:HA	2.00	0.42
2:D:792:THR:HA	2:D:796:THR:HG23	2.00	0.42
1:A:411:VAL:HG12	1:A:455:CYS:SG	2.59	0.42
2:B:558:TRP:O	2:B:562:PHE:HB2	2.19	0.42
1:C:549:SER:HB2	1:C:811:GLU:O	2.19	0.42
2:D:160:LYS:HD2	2:D:160:LYS:HA	1.83	0.42
2:D:690:GLU:HA	2:D:693:ILE:HG12	2.00	0.42
1:A:217:ARG:HA	1:A:217:ARG:HD3	1.72	0.42
1:C:94:HIS:HD2	1:C:122:THR:HG21	1.84	0.42
1:C:547:PRO:HD3	1:C:659:ARG:HH22	1.83	0.42
2:D:601:ILE:O	2:D:605:ILE:HG12	2.20	0.42
1:A:462:LEU:O	1:A:466:LEU:HD23	2.19	0.42
1:A:675:PRO:HB3	1:A:705:HIS:ND1	2.35	0.42
2:B:536:MET:HA	2:B:748:THR:HA	2.01	0.42
2:B:655:GLU:HG3	2:B:657:PHE:HE1	1.84	0.42
2:B:671:ARG:NH1	2:B:673:HIS:HB2	2.35	0.42
1:A:484:PHE:HA	1:A:501:MET:HE1	2.01	0.42
1:A:543:LYS:NZ	1:A:745:ASP:HB2	2.34	0.42
2:B:149:ALA:HB2	2:B:361:LEU:HD21	2.02	0.42
2:B:159:LEU:HA	2:B:162:MET:SD	2.60	0.42
2:B:162:MET:HG3	2:B:198:TRP:CH2	2.54	0.42
2:B:464:LEU:HD12	2:B:509:VAL:HG21	2.02	0.42
1:C:433:LYS:HB3	1:C:433:LYS:HE2	1.67	0.42
1:A:125:MET:HB2	1:A:128:TYR:CD2	2.55	0.42
1:C:572:VAL:O	1:C:575:VAL:HG22	2.20	0.42
2:D:100:PHE:CD2	2:D:113:LEU:HD11	2.55	0.42
2:D:437:ARG:HG3	2:D:478:TYR:HB2	2.01	0.42
2:D:442:ILE:HD12	2:D:442:ILE:H	1.85	0.42
2:D:574:PHE:CE2	2:D:601:ILE:HD12	2.54	0.42
2:D:721:THR:HG23	2:D:723:LYS:H	1.84	0.42
1:A:253:GLU:N	1:A:253:GLU:OE1	2.53	0.42
1:A:355:ASN:OD1	1:A:356:LEU:N	2.53	0.42
1:C:46:VAL:HG11	1:C:62:ALA:HB2	2.01	0.42
1:C:456:TYR:HD2	1:C:792:TRP:HH2	1.68	0.42
2:D:493:TRP:NE1	2:D:521:VAL:HG21	2.35	0.42
1:A:635:VAL:HG11	2:B:826:ALA:HB2	2.01	0.42

Continued on next page...

Continued from previous page...

Atom-1	Atom-2	Interatomic distance (Å)	Clash overlap (Å)
2:B:535:VAL:O	2:B:749:ILE:HG12	2.20	0.42
1:C:825:VAL:O	1:C:828:ILE:HG22	2.20	0.42
2:D:467:LEU:HD21	2:D:778:LEU:HD22	2.01	0.42
2:B:820:PHE:HA	2:B:823:LEU:HG	2.00	0.42
1:C:58:ILE:HG12	1:C:296:LEU:HD12	2.02	0.42
1:C:609:PHE:HA	1:C:620:GLY:HA3	2.01	0.42
1:A:814:ALA:HA	1:A:817:PHE:CD2	2.55	0.42
2:B:159:LEU:O	2:B:162:MET:HG2	2.19	0.42
2:B:407:SER:C	2:B:408:ILE:HD13	2.44	0.42
2:B:188:LYS:HA	2:B:191:VAL:HG12	2.02	0.41
2:B:604:ALA:O	2:B:608:LEU:HD23	2.20	0.41
1:C:232:TYR:OH	1:C:253:GLU:HB3	2.19	0.41
1:C:741:SER:O	1:C:797:GLU:HG3	2.20	0.41
2:D:161:ILE:CD1	2:D:383:LEU:HD21	2.47	0.41
2:D:552:PRO:HA	2:D:652:PHE:CE2	2.55	0.41
2:D:552:PRO:HA	2:D:652:PHE:HE2	1.85	0.41
1:A:196:GLN:OE1	1:A:196:GLN:N	2.53	0.41
2:B:786:GLU:HA	2:B:789:GLU:OE2	2.20	0.41
1:C:79:CYS:HA	1:C:83:ILE:HD12	2.01	0.41
1:C:169:ASP:OD1	1:C:196:GLN:HB3	2.20	0.41
1:C:789:ASP:HA	1:C:793:VAL:HG22	2.02	0.41
1:A:489:ARG:NH2	1:A:494:ASN:H	2.13	0.41
1:A:495:LYS:HD3	1:A:495:LYS:HA	1.88	0.41
1:A:693:PHE:HE2	1:A:730:ILE:HG21	1.85	0.41
2:B:204:ILE:HD12	2:B:218:GLN:HG3	2.02	0.41
2:B:256:ILE:HD13	2:B:277:ILE:HB	2.02	0.41
2:B:671:ARG:HH12	2:B:673:HIS:HB2	1.85	0.41
1:C:102:PHE:CE2	1:C:125:MET:HG2	2.54	0.41
1:C:601:LEU:HD12	1:C:605:SER:OG	2.20	0.41
1:C:681:TYR:HD1	1:C:730:ILE:HD11	1.85	0.41
2:D:507:MET:HE2	2:D:507:MET:HB3	1.90	0.41
1:A:208:LEU:HD12	1:A:240:MET:HG3	2.02	0.41
1:A:521:ASN:HA	2:D:779:LEU:HB3	2.02	0.41
2:B:338:MET:HA	2:B:341:VAL:HG13	2.01	0.41
2:B:426:THR:C	2:B:428:THR:H	2.27	0.41
2:B:724:LEU:HD12	2:B:724:LEU:HA	1.96	0.41
1:C:32:VAL:HG22	1:C:67:HIS:CD2	2.55	0.41
1:C:537:GLY:HA3	1:C:752:LEU:HD12	2.03	0.41
2:D:486:GLY:HA2	2:D:494:ASN:O	2.19	0.41
2:D:602:GLY:HA2	2:D:605:ILE:HG12	2.02	0.41
1:A:128:TYR:HB3	1:A:137:PHE:CD2	2.56	0.41

Continued on next page...

Continued from previous page...

Atom-1	Atom-2	Interatomic distance (Å)	Clash overlap (Å)
2:B:184:ILE:O	2:B:187:ILE:HG22	2.20	0.41
1:C:403:ILE:HB	1:C:501:MET:HE1	2.01	0.41
1:C:683:THR:HA	1:C:729:PHE:CE1	2.55	0.41
2:D:232:SER:O	2:D:236:ALA:N	2.47	0.41
2:D:339:VAL:O	2:D:349:SER:OG	2.27	0.41
2:D:533:ILE:HG12	2:D:756:ALA:HB2	2.02	0.41
1:A:438:GLY:HA3	1:A:478:LEU:HB2	2.02	0.41
1:C:131:LYS:NZ	1:C:137:PHE:H	2.19	0.41
1:C:614:LEU:HA	1:C:640:ALA:HB1	2.03	0.41
2:D:415:PRO:HG2	2:D:416:PHE:CD2	2.56	0.41
2:D:420:GLU:O	2:D:454:LYS:HB3	2.21	0.41
2:D:561:MET:HE3	2:D:561:MET:HB2	1.88	0.41
2:D:716:LEU:O	2:D:720:LYS:HG2	2.21	0.41
1:A:831:ILE:O	1:A:834:GLU:HG3	2.20	0.41
1:C:86:GLN:HB2	1:C:306:ARG:HD3	2.02	0.41
2:D:100:PHE:CE2	2:D:102:ASP:HB2	2.56	0.41
2:D:697:TYR:CB	2:D:700:MET:HE2	2.45	0.41
1:A:212:ARG:NH2	1:A:238:LEU:O	2.54	0.41
1:A:471:ASN:OD1	1:A:471:ASN:N	2.54	0.41
1:A:536:GLN:HB2	1:A:733:SER:HB2	2.02	0.41
2:B:167:TRP:HB3	2:B:226:VAL:HG21	2.03	0.41
2:B:518:ARG:HB3	2:B:524:PHE:CZ	2.55	0.41
2:B:670:GLN:HA	2:B:700:MET:SD	2.61	0.41
1:C:187:ARG:HG3	1:C:187:ARG:O	2.21	0.41
1:C:265:GLY:O	1:C:382:PRO:HD3	2.20	0.41
1:C:548:ARG:HA	1:C:548:ARG:CZ	2.51	0.41
1:C:683:THR:HA	1:C:729:PHE:HE1	1.85	0.41
1:C:813:MET:N	1:C:813:MET:SD	2.94	0.41
2:D:334:LEU:HA	2:D:337:PHE:HD2	1.85	0.41
2:D:533:ILE:HD11	2:D:755:PHE:CD2	2.56	0.41
2:D:552:PRO:HG3	2:D:652:PHE:HD2	1.85	0.41
2:D:721:THR:HG21	2:D:723:LYS:HZ1	1.84	0.41
1:A:123:THR:HG21	1:A:137:PHE:HZ	1.85	0.41
2:B:158:MET:HE1	2:B:258:PRO:HB3	2.02	0.41
1:C:809:THR:HG22	1:C:810:PHE:N	2.33	0.41
1:C:831:ILE:O	1:C:834:GLU:HG3	2.21	0.41
2:D:154:GLN:O	2:D:158:MET:HG3	2.20	0.41
2:D:523:ASP:O	2:D:764:LEU:N	2.50	0.41
2:D:546:PRO:O	2:D:818:GLY:HA3	2.20	0.41
2:D:701:HIS:O	2:D:705:THR:HG23	2.20	0.41
1:A:251:GLU:HG2	1:A:269:LEU:O	2.21	0.40

Continued on next page...

Continued from previous page...

Atom-1	Atom-2	Interatomic distance (Å)	Clash overlap (Å)
1:A:541:LEU:HB2	1:A:736:LEU:HD23	2.03	0.40
2:B:697:TYR:HB3	2:B:700:MET:HE3	2.03	0.40
1:C:682:ALA:HB2	1:C:709:HIS:HB2	2.03	0.40
2:D:188:LYS:HA	2:D:191:VAL:HG12	2.03	0.40
2:B:533:ILE:HB	2:B:755:PHE:HB3	2.04	0.40
2:B:533:ILE:HG12	2:B:756:ALA:HB2	2.03	0.40
2:B:628:LYS:HG2	1:C:619:ILE:HG23	2.03	0.40
2:B:781:PHE:HB3	2:B:787:MET:HE3	2.04	0.40
1:C:128:TYR:HA	1:C:134:HIS:CD2	2.56	0.40
1:C:491:ASN:OD1	1:C:492:ASN:N	2.54	0.40
1:C:502:MET:HG2	1:C:527:ILE:CD1	2.51	0.40
2:D:79:PRO:O	2:D:83:ILE:HG12	2.21	0.40
1:A:212:ARG:HH21	1:A:240:MET:HE3	1.86	0.40
2:D:831:LEU:HD23	2:D:831:LEU:HA	1.90	0.40
1:A:34:SER:HB2	1:A:38:HIS:ND1	2.36	0.40
1:A:394:MET:HE2	1:A:768:TRP:NE1	2.36	0.40
2:D:515:ASN:OD1	2:D:516:GLU:N	2.52	0.40
2:D:627:SER:O	2:D:631:VAL:HG23	2.21	0.40
2:D:771:LYS:O	2:D:774:ILE:HG22	2.22	0.40
1:A:460:ILE:O	1:A:464:ILE:HG12	2.22	0.40
1:A:572:VAL:HA	1:A:575:VAL:HG22	2.03	0.40
1:C:93:SER:HB3	1:C:121:LEU:HD12	2.03	0.40
1:C:221:LEU:HD23	1:C:253:GLU:HG2	2.04	0.40
2:D:513:THR:O	2:D:518:ARG:NH1	2.52	0.40
2:D:660:GLN:OE1	2:D:660:GLN:N	2.51	0.40

There are no symmetry-related clashes.

5.3 Torsion angles

5.3.1 Protein backbone

In the following table, the Percentiles column shows the percent Ramachandran outliers of the chain as a percentile score with respect to all PDB entries followed by that with respect to all EM entries.

The Analysed column shows the number of residues for which the backbone conformation was analysed, and the total number of residues.

Mol	Chain	Analysed	Favoured	Allowed	Outliers	Percentiles	
1	A	798/1108 (72%)	779 (98%)	19 (2%)	0	100	100

Continued on next page...

Continued from previous page...

Mol	Chain	Analysed	Favoured	Allowed	Outliers	Percentiles	
1	C	798/1108 (72%)	774 (97%)	24 (3%)	0	100	100
2	B	781/1126 (69%)	751 (96%)	30 (4%)	0	100	100
2	D	781/1126 (69%)	750 (96%)	31 (4%)	0	100	100
All	All	3158/4468 (71%)	3054 (97%)	104 (3%)	0	100	100

There are no Ramachandran outliers to report.

5.3.2 Protein sidechains ⓘ

In the following table, the Percentiles column shows the percent sidechain outliers of the chain as a percentile score with respect to all PDB entries followed by that with respect to all EM entries.

The Analysed column shows the number of residues for which the sidechain conformation was analysed, and the total number of residues.

Mol	Chain	Analysed	Rotameric	Outliers	Percentiles	
1	A	690/956 (72%)	690 (100%)	0	100	100
1	C	690/956 (72%)	690 (100%)	0	100	100
2	B	689/977 (70%)	689 (100%)	0	100	100
2	D	689/977 (70%)	689 (100%)	0	100	100
All	All	2758/3866 (71%)	2758 (100%)	0	100	100

There are no protein residues with a non-rotameric sidechain to report.

Sometimes sidechains can be flipped to improve hydrogen bonding and reduce clashes. All (30) such sidechains are listed below:

Mol	Chain	Res	Type
1	A	99	ASN
1	A	273	ASN
1	A	276	ASN
1	A	375	ASN
1	A	405	GLN
1	A	453	GLN
2	B	35	ASN
2	B	356	GLN
2	B	358	HIS
2	B	381	GLN
2	B	451	ASN

Continued on next page...

Continued from previous page...

Mol	Chain	Res	Type
2	B	648	ASN
2	B	692	ASN
2	B	696	ASN
1	C	50	ASN
1	C	177	GLN
1	C	196	GLN
1	C	650	ASN
1	C	696	GLN
2	D	223	HIS
2	D	323	GLN
2	D	381	GLN
2	D	615	ASN
2	D	654	GLN
2	D	670	GLN
2	D	686	ASN
2	D	696	ASN
2	D	702	GLN
2	D	780	GLN
2	D	815	ASN

5.3.3 RNA ⓘ

There are no RNA molecules in this entry.

5.4 Non-standard residues in protein, DNA, RNA chains ⓘ

There are no non-standard protein/DNA/RNA residues in this entry.

5.5 Carbohydrates ⓘ

There are no oligosaccharides in this entry.

5.6 Ligand geometry ⓘ

There are no ligands in this entry.

5.7 Other polymers ⓘ

There are no such residues in this entry.

5.8 Polymer linkage issues ⓘ

There are no chain breaks in this entry.

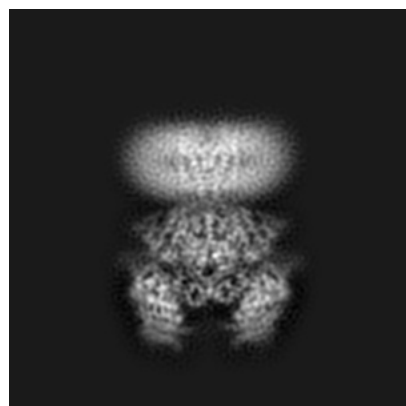
6 Map visualisation [i](#)

This section contains visualisations of the EMDB entry EMD-45283. These allow visual inspection of the internal detail of the map and identification of artifacts.

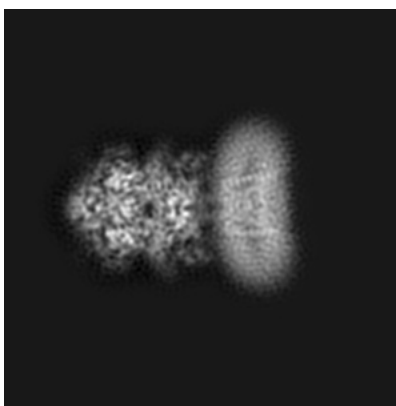
Images derived from a raw map, generated by summing the deposited half-maps, are presented below the corresponding image components of the primary map to allow further visual inspection and comparison with those of the primary map.

6.1 Orthogonal projections [i](#)

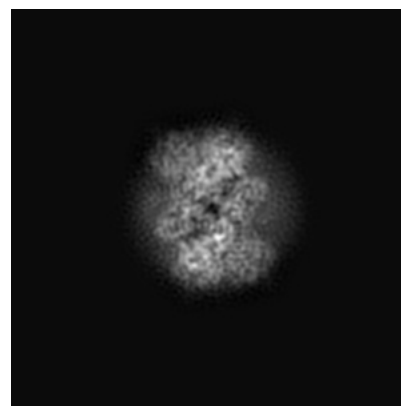
6.1.1 Primary map



X

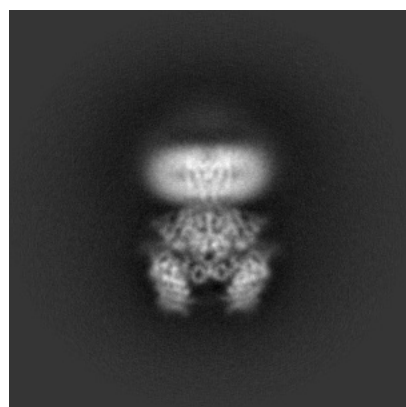


Y

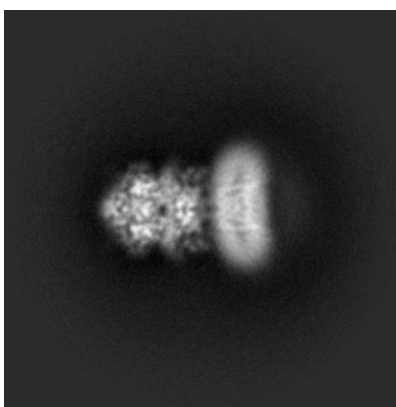


Z

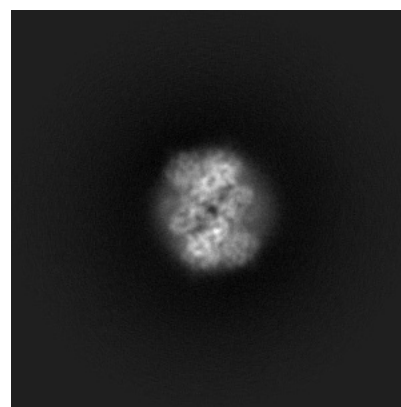
6.1.2 Raw map



X



Y

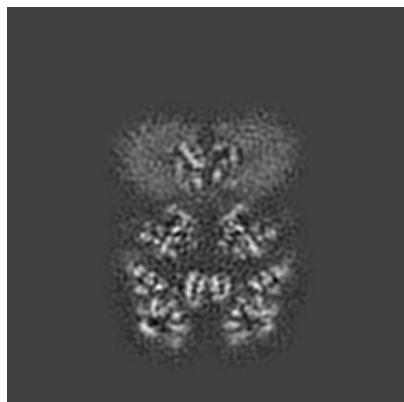


Z

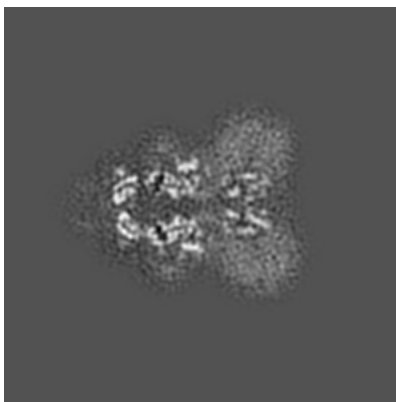
The images above show the map projected in three orthogonal directions.

6.2 Central slices [i](#)

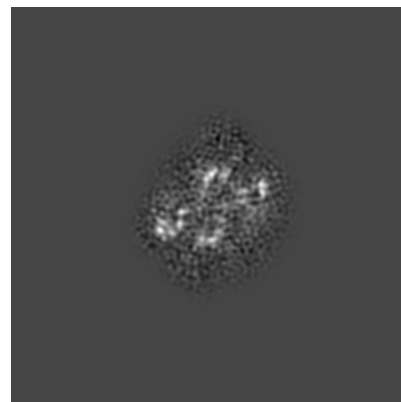
6.2.1 Primary map



X Index: 150

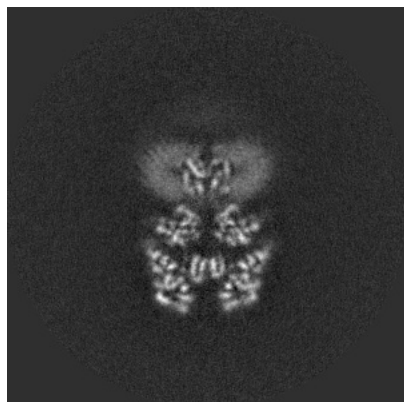


Y Index: 150

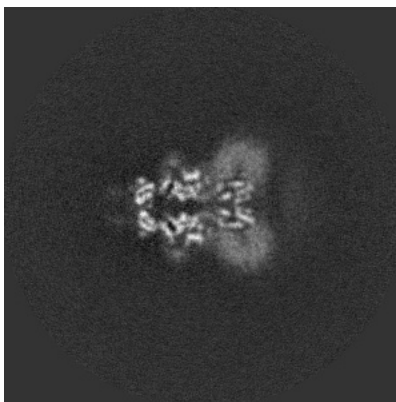


Z Index: 150

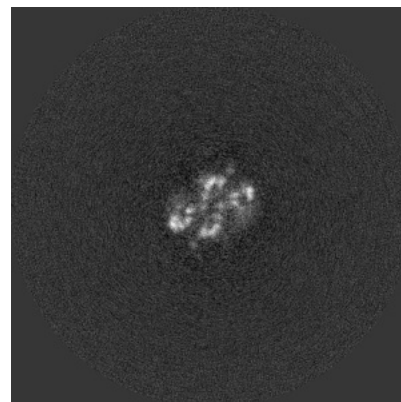
6.2.2 Raw map



X Index: 200



Y Index: 200

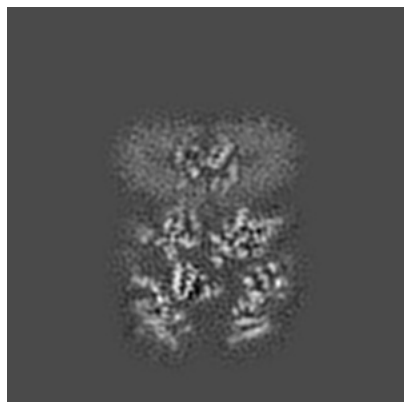


Z Index: 200

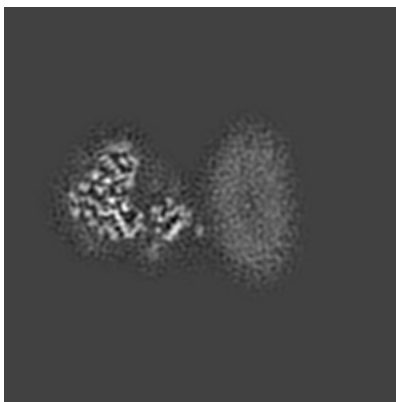
The images above show central slices of the map in three orthogonal directions.

6.3 Largest variance slices [i](#)

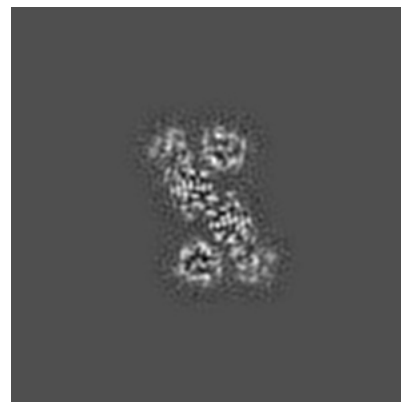
6.3.1 Primary map



X Index: 155

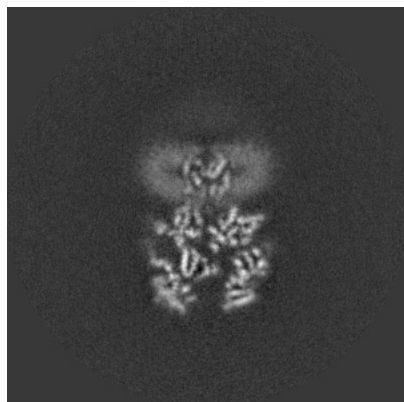


Y Index: 114

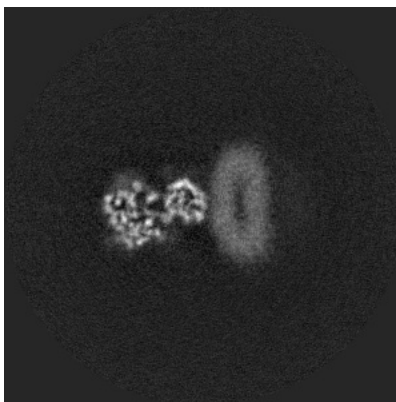


Z Index: 92

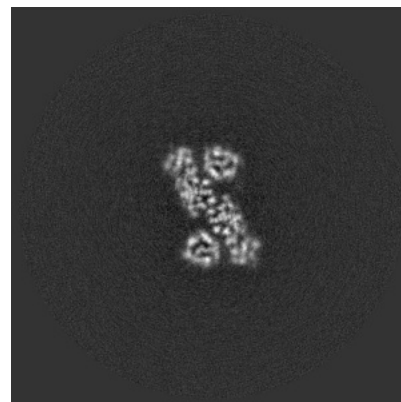
6.3.2 Raw map



X Index: 205



Y Index: 227

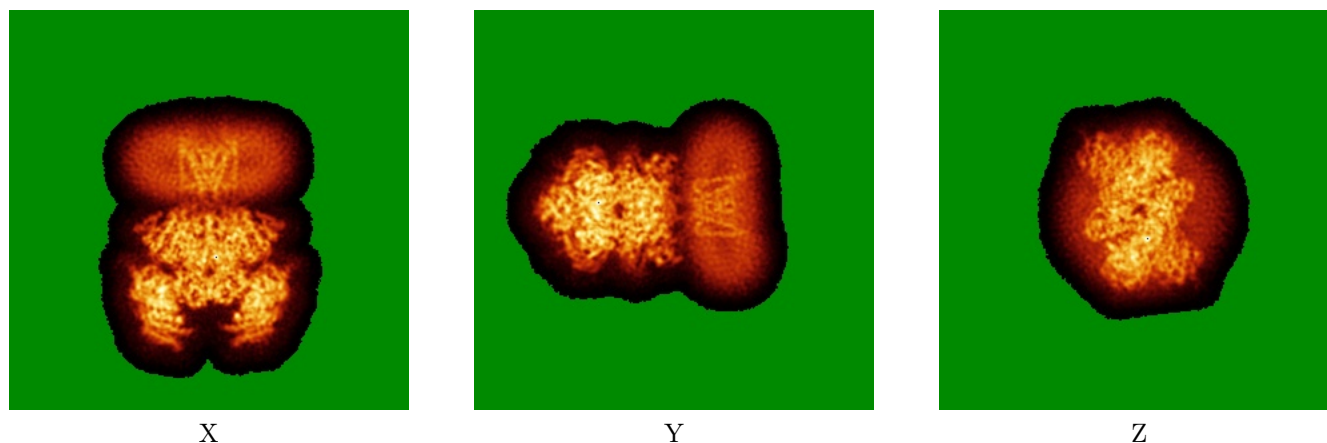


Z Index: 142

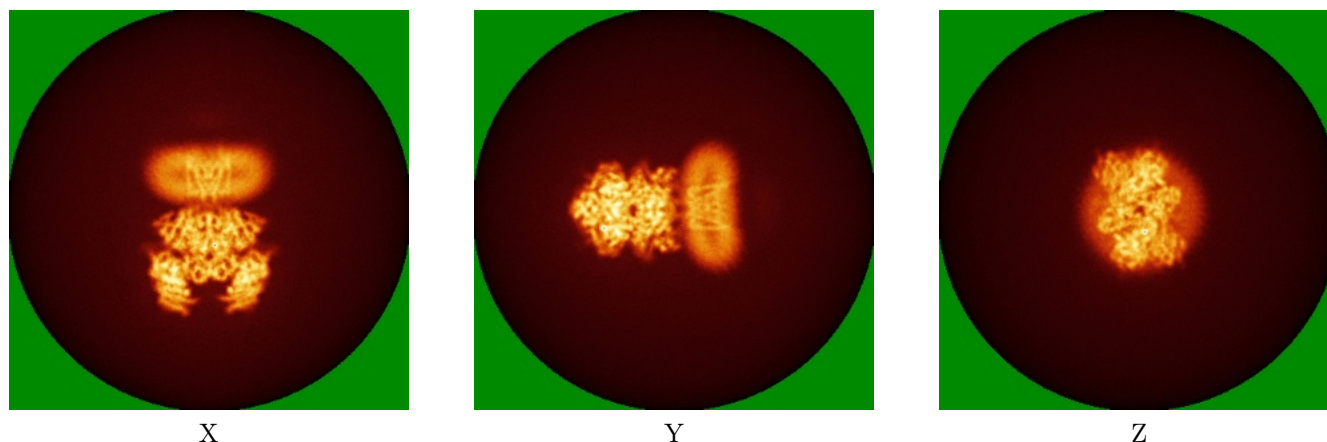
The images above show the largest variance slices of the map in three orthogonal directions.

6.4 Orthogonal standard-deviation projections (False-color) [i](#)

6.4.1 Primary map



6.4.2 Raw map



The images above show the map standard deviation projections with false color in three orthogonal directions. Minimum values are shown in green, max in blue, and dark to light orange shades represent small to large values respectively.

6.5 Orthogonal surface views [i](#)

This section was not generated.

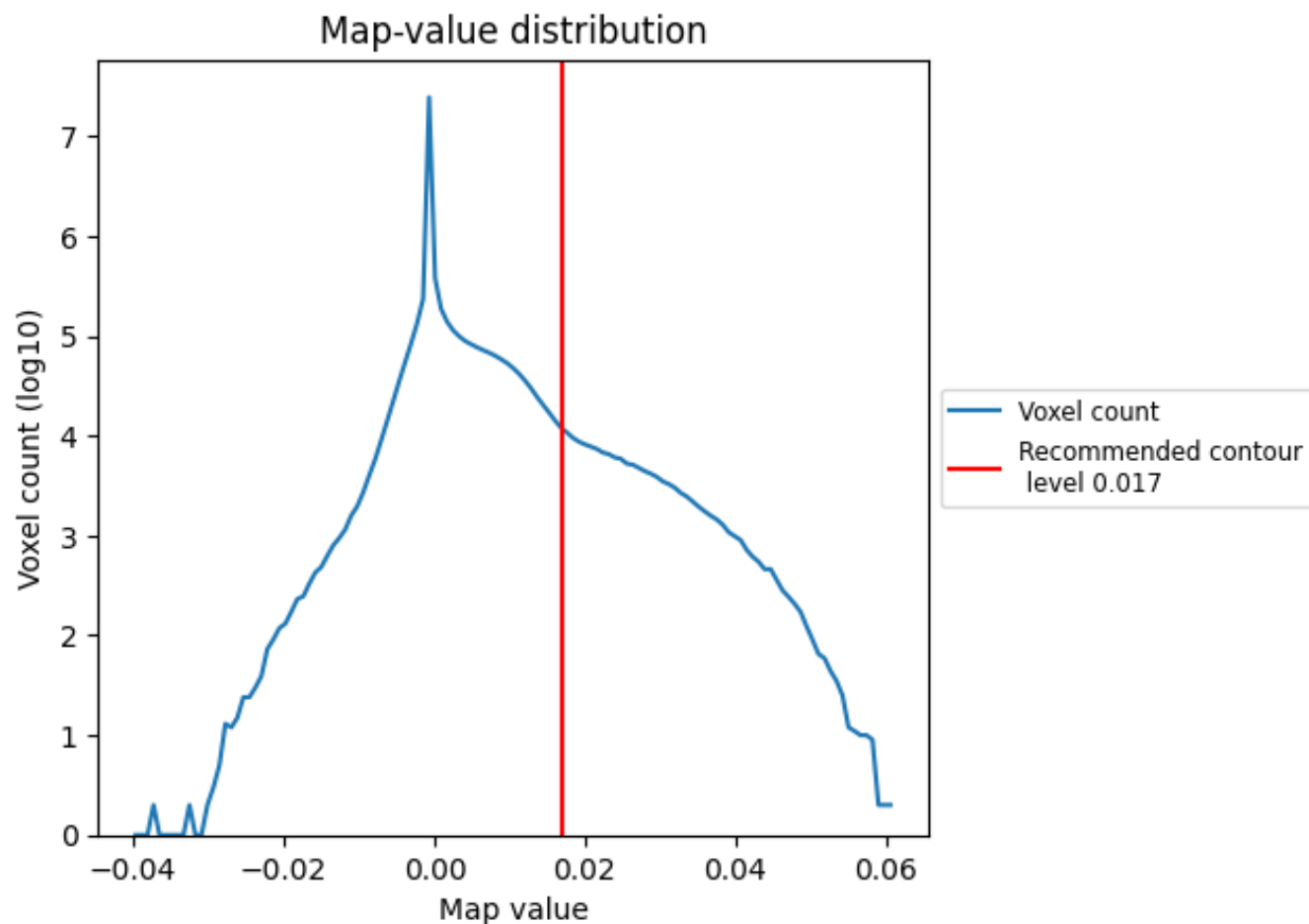
6.6 Mask visualisation [i](#)

This section was not generated. No masks/segmentation were deposited.

7 Map analysis [i](#)

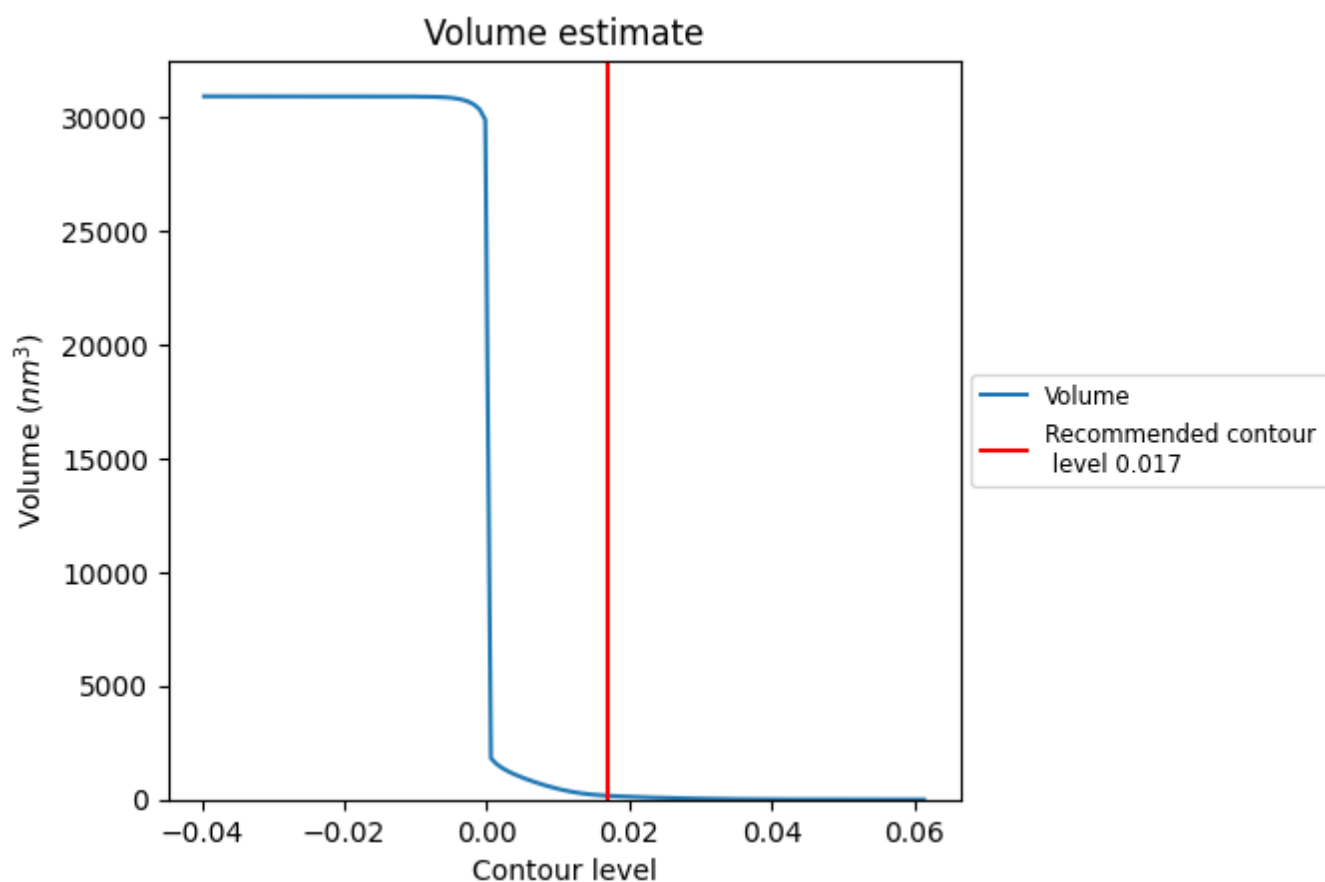
This section contains the results of statistical analysis of the map.

7.1 Map-value distribution [i](#)



The map-value distribution is plotted in 128 intervals along the x-axis. The y-axis is logarithmic. A spike in this graph at zero usually indicates that the volume has been masked.

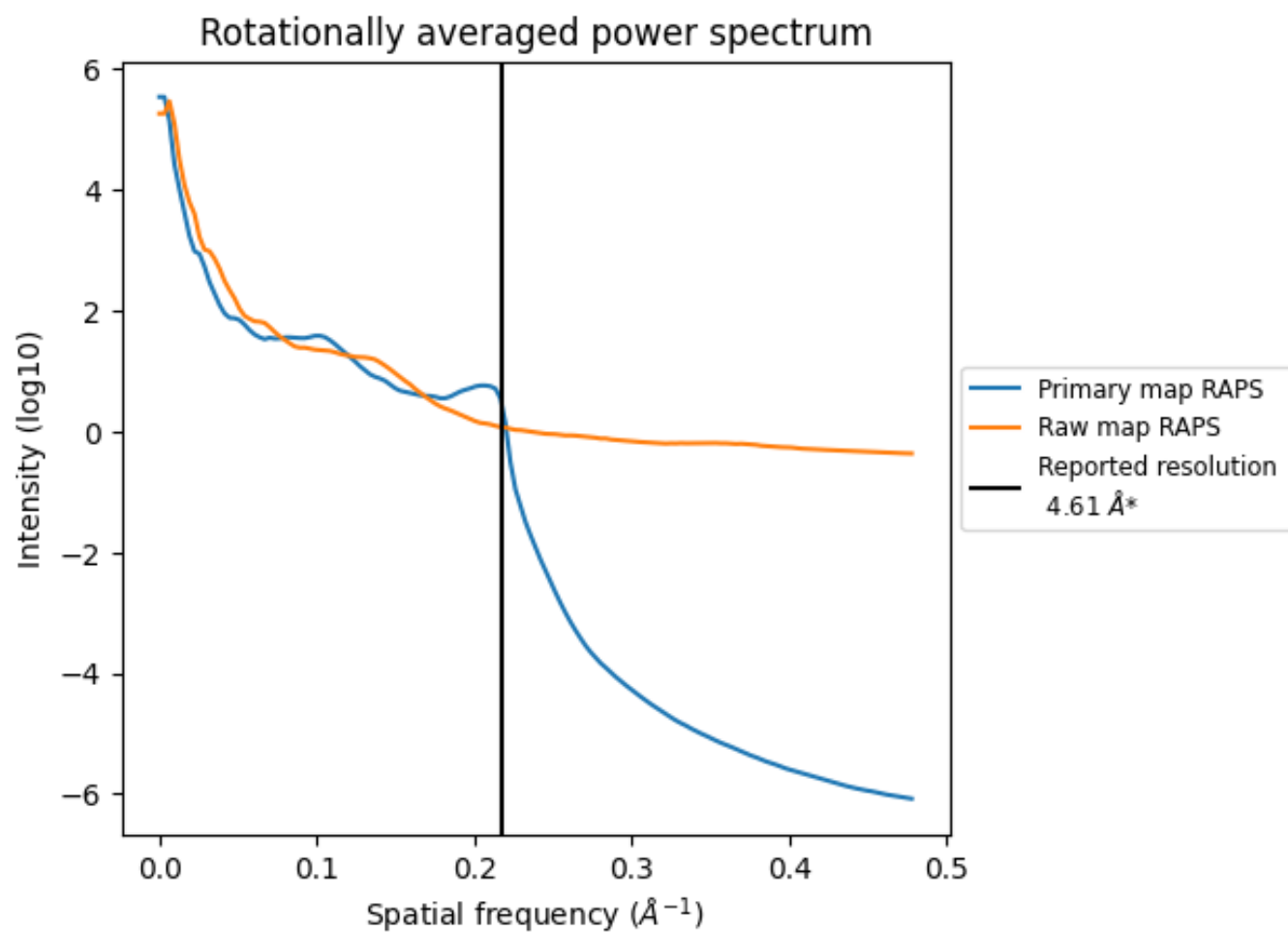
7.2 Volume estimate [i](#)



The volume at the recommended contour level is 168 nm³; this corresponds to an approximate mass of 152 kDa.

The volume estimate graph shows how the enclosed volume varies with the contour level. The recommended contour level is shown as a vertical line and the intersection between the line and the curve gives the volume of the enclosed surface at the given level.

7.3 Rotationally averaged power spectrum ⓘ

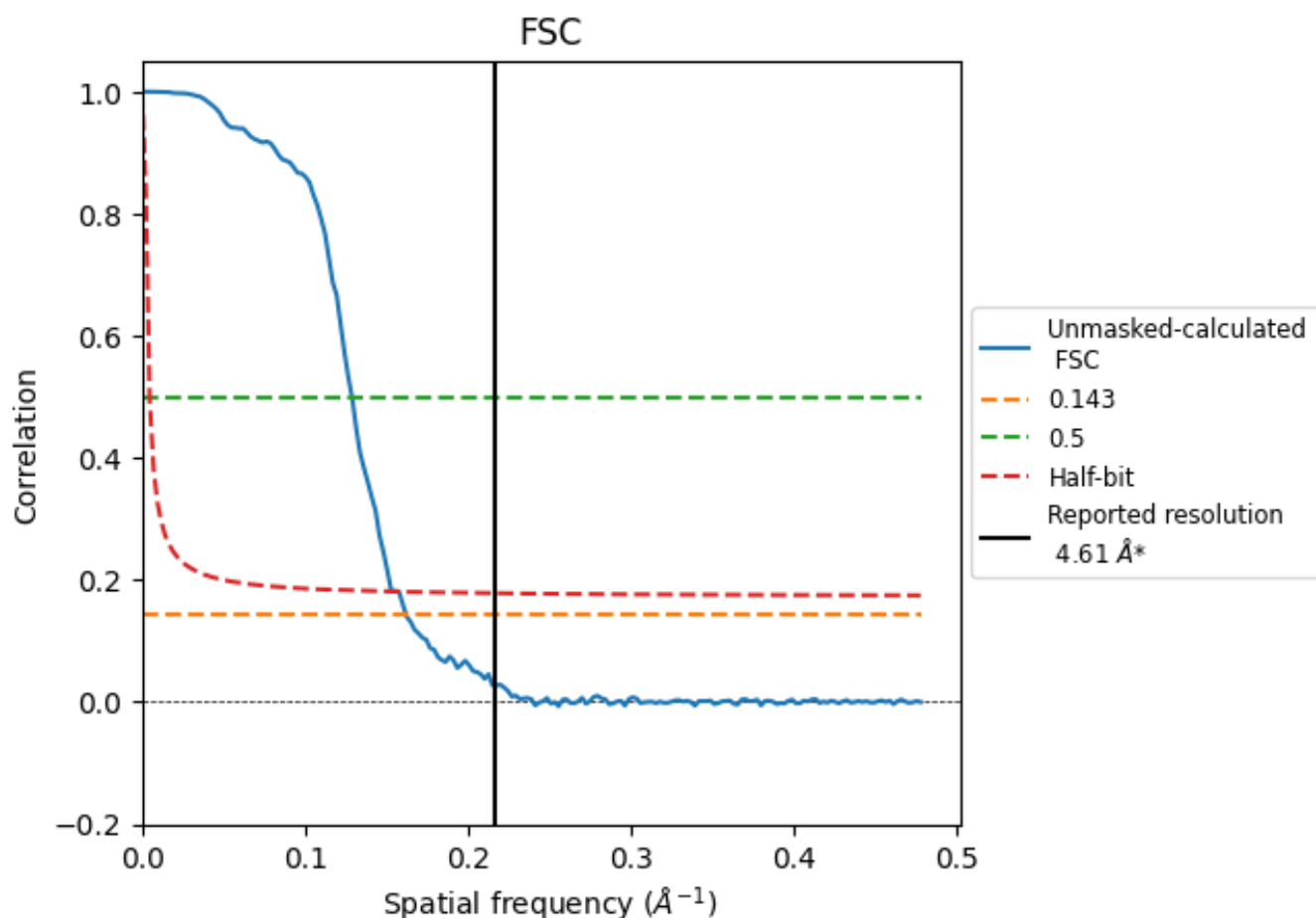


*Reported resolution corresponds to spatial frequency of 0.217 \AA^{-1}

8 Fourier-Shell correlation [i](#)

Fourier-Shell Correlation (FSC) is the most commonly used method to estimate the resolution of single-particle and subtomogram-averaged maps. The shape of the curve depends on the imposed symmetry, mask and whether or not the two 3D reconstructions used were processed from a common reference. The reported resolution is shown as a black line. A curve is displayed for the half-bit criterion in addition to lines showing the 0.143 gold standard cut-off and 0.5 cut-off.

8.1 FSC [i](#)



*Reported resolution corresponds to spatial frequency of 0.217 Å⁻¹

8.2 Resolution estimates [i](#)

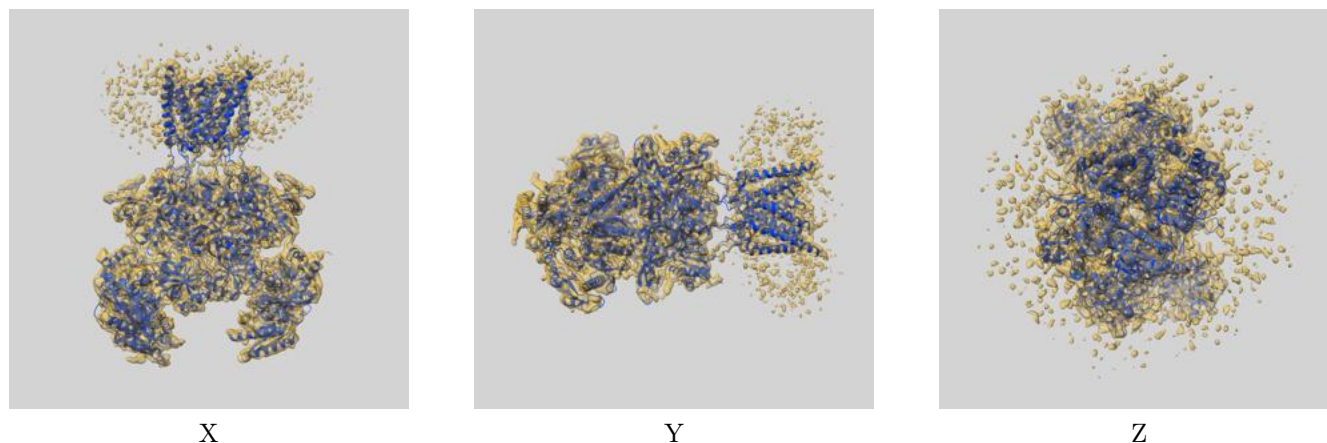
Resolution estimate (Å)	Estimation criterion (FSC cut-off)		
	0.143	0.5	Half-bit
Reported by author	4.61	-	-
Author-provided FSC curve	-	-	-
Unmasked-calculated*	6.17	7.76	6.34

*Resolution estimate based on FSC curve calculated by comparison of deposited half-maps. The value from deposited half-maps intersecting FSC 0.143 CUT-OFF 6.17 differs from the reported value 4.61 by more than 10 %

9 Map-model fit [i](#)

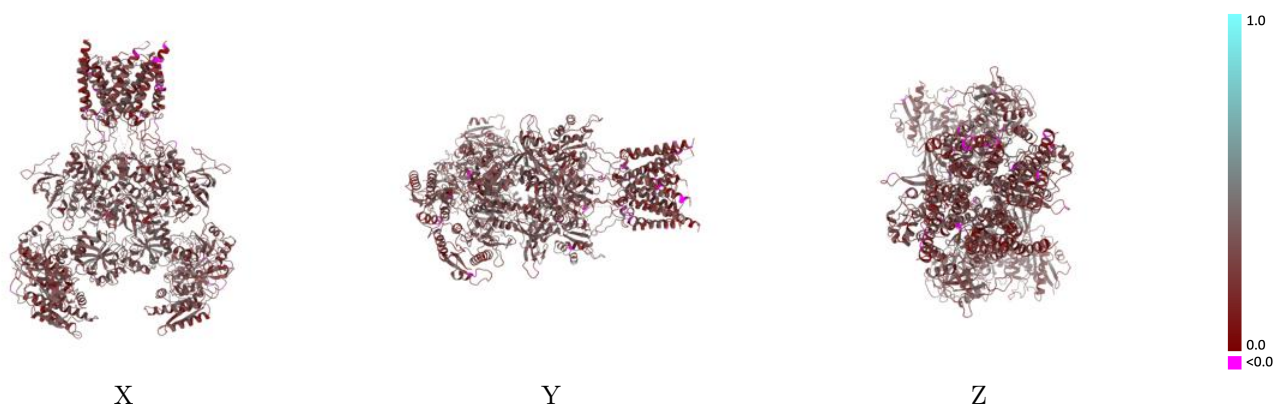
This section contains information regarding the fit between EMDB map EMD-45283 and PDB model 9C7P. Per-residue inclusion information can be found in section [3](#) on page [7](#).

9.1 Map-model overlay [i](#)



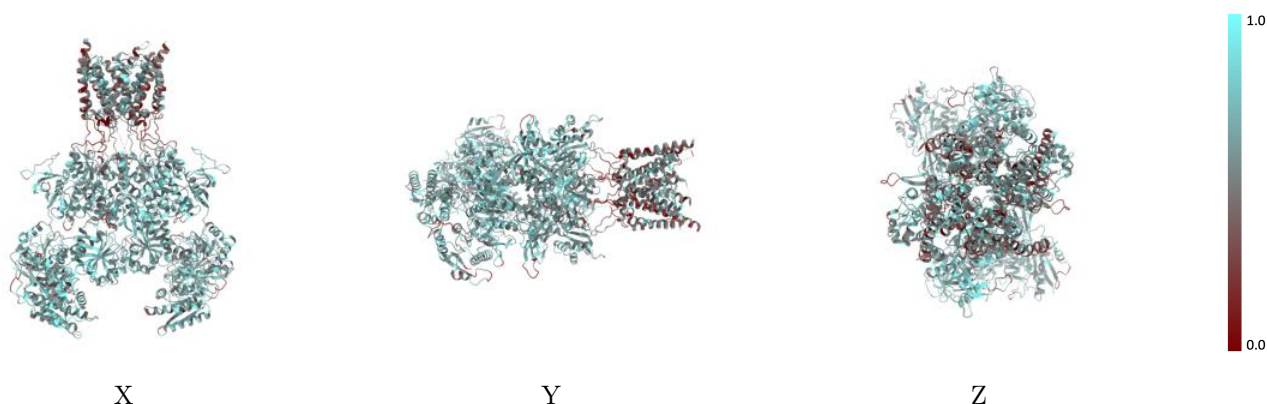
The images above show the 3D surface view of the map at the recommended contour level 0.017 at 50% transparency in yellow overlaid with a ribbon representation of the model coloured in blue. These images allow for the visual assessment of the quality of fit between the atomic model and the map.

9.2 Q-score mapped to coordinate model [i](#)



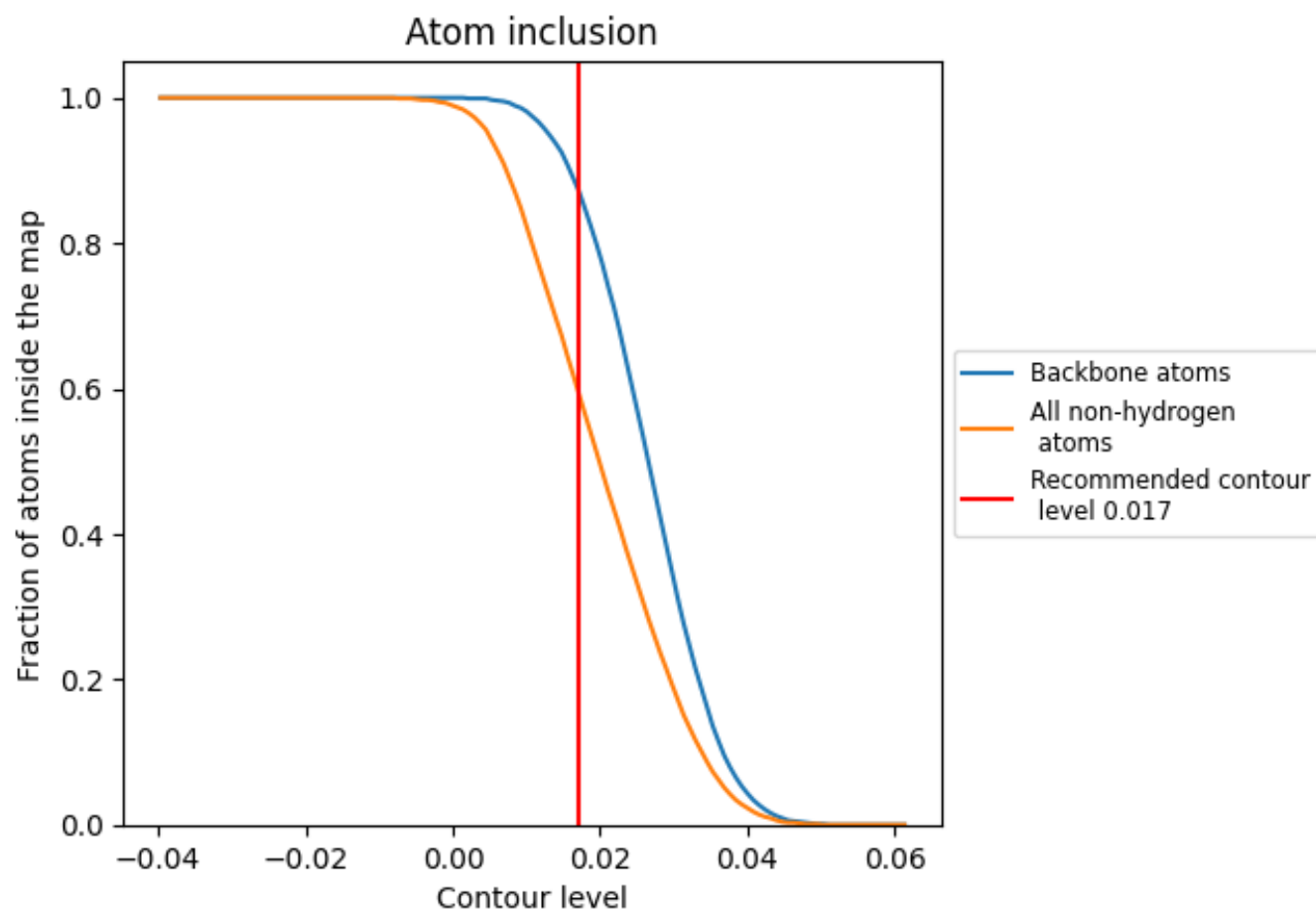
The images above show the model with each residue coloured according to its Q-score. This shows their resolvability in the map with higher Q-score values reflecting better resolvability. Please note: Q-score is calculating the resolvability of atoms, and thus high values are only expected at resolutions at which atoms can be resolved. Low Q-score values may therefore be expected for many entries.

9.3 Atom inclusion mapped to coordinate model [i](#)



The images above show the model with each residue coloured according to its atom inclusion. This shows to what extent they are inside the map at the recommended contour level (0.017).

9.4 Atom inclusion [i](#)



At the recommended contour level, 88% of all backbone atoms, 60% of all non-hydrogen atoms, are inside the map.

9.5 Map-model fit summary ⓘ

The table lists the average atom inclusion at the recommended contour level (0.017) and Q-score for the entire model and for each chain.

Chain	Atom inclusion	Q-score
All	<div></div> 0.5980	<div></div> 0.2950
A	<div></div> 0.5860	<div></div> 0.2880
B	<div></div> 0.5960	<div></div> 0.2950
C	<div></div> 0.6050	<div></div> 0.2980
D	<div></div> 0.6050	<div></div> 0.3010

