



Full wwPDB X-ray Structure Validation Report ⓘ

Nov 17, 2025 – 12:53 PM EST

PDB ID : 9YHD / pdb_00009yhd
Title : Crystal structure of Chikungunya virus nsP3 macrodomain D31N mutant (P41 crystal form) in complex with ADP-ribose
Authors : Correy, G.J.; Fraser, J.S.
Deposited on : 2025-09-30
Resolution : 1.81 Å(reported)

This is a Full wwPDB X-ray Structure Validation Report for a publicly released PDB entry.

We welcome your comments at validation@mail.wwpdb.org

A user guide is available at

<https://www.wwpdb.org/validation/2017/XrayValidationReportHelp>

with specific help available everywhere you see the ⓘ symbol.

The types of validation reports are described at

<http://www.wwpdb.org/validation/2017/FAQs#types>.

The following versions of software and data (see [references ⓘ](#)) were used in the production of this report:

MolProbity : 4-5-2 with Phenix2.0
Mogul : 2022.3.0, CSD as543be (2022)
Xtriage (Phenix) : 2.0
EDS : 3.0
buster-report : 1.1.7 (2018)
Percentile statistics : 20231227.v01 (using entries in the PDB archive December 27th 2023)
CCP4 : 9.0.010 (Gargrove)
Density-Fitness : 1.0.12
Ideal geometry (proteins) : Engh & Huber (2001)
Ideal geometry (DNA, RNA) : Parkinson et al. (1996)
Validation Pipeline (wwPDB-VP) : 2.46

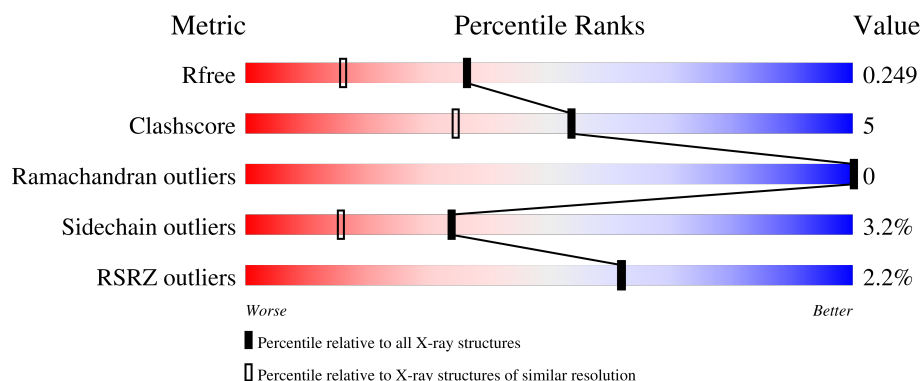
1 Overall quality at a glance

The following experimental techniques were used to determine the structure:

X-RAY DIFFRACTION

The reported resolution of this entry is 1.81 Å.

Percentile scores (ranging between 0-100) for global validation metrics of the entry are shown in the following graphic. The table shows the number of entries on which the scores are based.



Metric	Whole archive (#Entries)	Similar resolution (#Entries, resolution range(Å))
R_{free}	164625	9242 (1.84-1.80)
Clashscore	180529	1080 (1.82-1.82)
Ramachandran outliers	177936	1073 (1.82-1.82)
Sidechain outliers	177891	1073 (1.82-1.82)
RSRZ outliers	164620	9241 (1.84-1.80)

The table below summarises the geometric issues observed across the polymeric chains and their fit to the electron density. The red, orange, yellow and green segments of the lower bar indicate the fraction of residues that contain outliers for ≥ 3 , 2, 1 and 0 types of geometric quality criteria respectively. A grey segment represents the fraction of residues that are not modelled. The numeric value for each fraction is indicated below the corresponding segment, with a dot representing fractions $\leq 5\%$. The upper red bar (where present) indicates the fraction of residues that have poor fit to the electron density. The numeric value is given above the bar.

Mol	Chain	Length	Quality of chain
1	A	168	<div> <div style="width: 100%; height: 10px; position: relative;"> <div style="position: absolute; top: -10px; left: 0; width: 100%; height: 1px; background-color: red;"></div> <div style="position: absolute; bottom: 0; left: 0; width: 100%; height: 10px; background-color: green;"></div> <div style="position: absolute; bottom: 0; left: 87%; width: 13%; height: 10px; background-color: yellow;"></div> <div style="position: absolute; bottom: 0; left: 99%; width: 2%; height: 10px; background-color: grey;"></div> </div> <div>87% 8% 5%</div> </div>
1	B	168	<div> <div style="width: 100%; height: 10px; position: relative;"> <div style="position: absolute; bottom: 0; left: 0; width: 100%; height: 10px; background-color: green;"></div> <div style="position: absolute; bottom: 0; left: 86%; width: 14%; height: 10px; background-color: yellow;"></div> <div style="position: absolute; bottom: 0; left: 99%; width: 2%; height: 10px; background-color: grey;"></div> </div> <div>86% 10% 5%</div> </div>
1	C	168	<div> <div style="width: 100%; height: 10px; position: relative;"> <div style="position: absolute; top: -10px; left: 0; width: 100%; height: 1px; background-color: red;"></div> <div style="position: absolute; bottom: 0; left: 0; width: 100%; height: 10px; background-color: green;"></div> <div style="position: absolute; bottom: 0; left: 85%; width: 15%; height: 10px; background-color: yellow;"></div> <div style="position: absolute; bottom: 0; left: 99%; width: 2%; height: 10px; background-color: grey;"></div> </div> <div>85% 10% 5%</div> </div>
1	D	168	<div> <div style="width: 100%; height: 10px; position: relative;"> <div style="position: absolute; top: -10px; left: 0; width: 100%; height: 1px; background-color: red;"></div> <div style="position: absolute; bottom: 0; left: 0; width: 100%; height: 10px; background-color: green;"></div> <div style="position: absolute; bottom: 0; left: 74%; width: 26%; height: 10px; background-color: yellow;"></div> <div style="position: absolute; bottom: 0; left: 99%; width: 2%; height: 10px; background-color: grey;"></div> </div> <div>74% 20% 5%</div> </div>

2 Entry composition

There are 3 unique types of molecules in this entry. The entry contains 10365 atoms, of which 4981 are hydrogens and 0 are deuteriums.

In the tables below, the ZeroOcc column contains the number of atoms modelled with zero occupancy, the AltConf column contains the number of residues with at least one atom in alternate conformation and the Trace column contains the number of residues modelled with at most 2 atoms.

- Molecule 1 is a protein called Non-structural protein 3.

Mol	Chain	Residues	Atoms						ZeroOcc	AltConf	Trace
1	A	160	Total	C	H	N	O	S	0	5	0
			2505	782	1250	222	243	8			
1	B	160	Total	C	H	N	O	S	0	5	0
			2501	780	1249	222	242	8			
1	C	160	Total	C	H	N	O	S	0	3	0
			2489	777	1243	221	240	8			
1	D	160	Total	C	H	N	O	S	0	0	0
			2445	765	1218	216	238	8			

There are 36 discrepancies between the modelled and reference sequences:

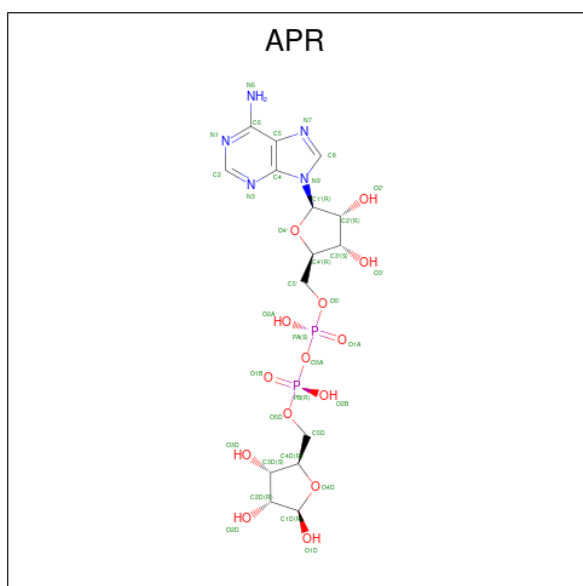
Chain	Residue	Modelled	Actual	Comment	Reference
A	-7	MET	-	initiating methionine	UNP Q8JUX6
A	-6	LYS	-	expression tag	UNP Q8JUX6
A	-5	HIS	-	expression tag	UNP Q8JUX6
A	-4	HIS	-	expression tag	UNP Q8JUX6
A	-3	HIS	-	expression tag	UNP Q8JUX6
A	-2	HIS	-	expression tag	UNP Q8JUX6
A	-1	HIS	-	expression tag	UNP Q8JUX6
A	0	HIS	-	expression tag	UNP Q8JUX6
A	31	ASN	ASP	engineered mutation	UNP Q8JUX6
B	-7	MET	-	initiating methionine	UNP Q8JUX6
B	-6	LYS	-	expression tag	UNP Q8JUX6
B	-5	HIS	-	expression tag	UNP Q8JUX6
B	-4	HIS	-	expression tag	UNP Q8JUX6
B	-3	HIS	-	expression tag	UNP Q8JUX6
B	-2	HIS	-	expression tag	UNP Q8JUX6
B	-1	HIS	-	expression tag	UNP Q8JUX6
B	0	HIS	-	expression tag	UNP Q8JUX6
B	31	ASN	ASP	engineered mutation	UNP Q8JUX6
C	-7	MET	-	initiating methionine	UNP Q8JUX6
C	-6	LYS	-	expression tag	UNP Q8JUX6
C	-5	HIS	-	expression tag	UNP Q8JUX6

Continued on next page...

Continued from previous page...

Chain	Residue	Modelled	Actual	Comment	Reference
C	-4	HIS	-	expression tag	UNP Q8JUX6
C	-3	HIS	-	expression tag	UNP Q8JUX6
C	-2	HIS	-	expression tag	UNP Q8JUX6
C	-1	HIS	-	expression tag	UNP Q8JUX6
C	0	HIS	-	expression tag	UNP Q8JUX6
C	31	ASN	ASP	engineered mutation	UNP Q8JUX6
D	-7	MET	-	initiating methionine	UNP Q8JUX6
D	-6	LYS	-	expression tag	UNP Q8JUX6
D	-5	HIS	-	expression tag	UNP Q8JUX6
D	-4	HIS	-	expression tag	UNP Q8JUX6
D	-3	HIS	-	expression tag	UNP Q8JUX6
D	-2	HIS	-	expression tag	UNP Q8JUX6
D	-1	HIS	-	expression tag	UNP Q8JUX6
D	0	HIS	-	expression tag	UNP Q8JUX6
D	31	ASN	ASP	engineered mutation	UNP Q8JUX6

- Molecule 2 is ADENOSINE-5-DIPHOSPHORIBOSE (CCD ID: APR) (formula: $C_{15}H_{23}N_5O_{14}P_2$) (labeled as "Ligand of Interest" by depositor).



Mol	Chain	Residues	Atoms					ZeroOcc	AltConf
2	D	1	Total	C	H	N	O	P	
			57	15	21	5	14	2	

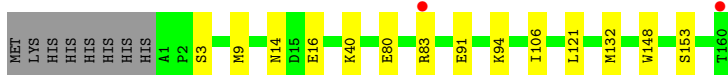
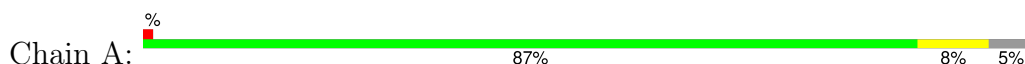
- Molecule 3 is water.

Mol	Chain	Residues	Atoms		ZeroOcc	AltConf
3	A	118	Total 120	O 120	0	4
3	B	110	Total 110	O 110	0	0
3	C	96	Total 96	O 96	0	0
3	D	42	Total 42	O 42	0	0

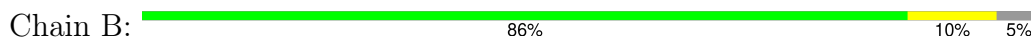
3 Residue-property plots [i](#)

These plots are drawn for all protein, RNA, DNA and oligosaccharide chains in the entry. The first graphic for a chain summarises the proportions of the various outlier classes displayed in the second graphic. The second graphic shows the sequence view annotated by issues in geometry and electron density. Residues are color-coded according to the number of geometric quality criteria for which they contain at least one outlier: green = 0, yellow = 1, orange = 2 and red = 3 or more. A red dot above a residue indicates a poor fit to the electron density ($RSRZ > 2$). Stretches of 2 or more consecutive residues without any outlier are shown as a green connector. Residues present in the sample, but not in the model, are shown in grey.

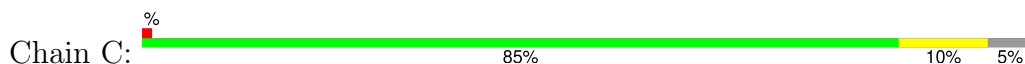
- Molecule 1: Non-structural protein 3



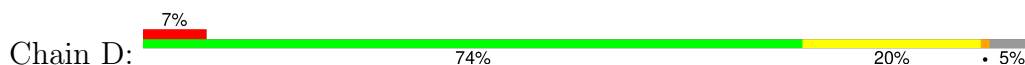
- Molecule 1: Non-structural protein 3



- Molecule 1: Non-structural protein 3



- Molecule 1: Non-structural protein 3



4 Data and refinement statistics

Property	Value	Source
Space group	P 41	Depositor
Cell constants a, b, c, α , β , γ	73.47Å 73.47Å 114.23Å 90.00° 90.00° 90.00°	Depositor
Resolution (Å)	47.29 – 1.81 47.29 – 1.81	Depositor EDS
% Data completeness (in resolution range)	97.9 (47.29-1.81) 97.8 (47.29-1.81)	Depositor EDS
R_{merge}	0.13	Depositor
R_{sym}	(Not available)	Depositor
$\langle I/\sigma(I) \rangle$ ¹	1.04 (at 1.81Å)	Xtriage
Refinement program	PHENIX 1.21.1_5286	Depositor
R, R_{free}	0.186 , 0.249 0.186 , 0.249	Depositor DCC
R_{free} test set	2849 reflections (2.00%)	wwPDB-VP
Wilson B-factor (Å ²)	27.1	Xtriage
Anisotropy	0.231	Xtriage
Bulk solvent k_{sol} (e/Å ³), B_{sol} (Å ²)	0.38 , 35.5	EDS
L-test for twinning ²	$\langle L \rangle = 0.47$, $\langle L^2 \rangle = 0.30$	Xtriage
Estimated twinning fraction	0.053 for h,-k,-l	Xtriage
F_o, F_c correlation	0.97	EDS
Total number of atoms	10365	wwPDB-VP
Average B, all atoms (Å ²)	40.0	wwPDB-VP

Xtriage's analysis on translational NCS is as follows: *The largest off-origin peak in the Patterson function is 9.68% of the height of the origin peak. No significant pseudotranslation is detected.*

¹Intensities estimated from amplitudes.

²Theoretical values of $\langle |L| \rangle$, $\langle L^2 \rangle$ for acentric reflections are 0.5, 0.333 respectively for untwinned datasets, and 0.375, 0.2 for perfectly twinned datasets.

5 Model quality [i](#)

5.1 Standard geometry [i](#)

Bond lengths and bond angles in the following residue types are not validated in this section: APR

The Z score for a bond length (or angle) is the number of standard deviations the observed value is removed from the expected value. A bond length (or angle) with $|Z| > 5$ is considered an outlier worth inspection. RMSZ is the root-mean-square of all Z scores of the bond lengths (or angles).

Mol	Chain	Bond lengths		Bond angles	
		RMSZ	$\# Z > 5$	RMSZ	$\# Z > 5$
1	A	0.53	0/1294	0.63	0/1753
1	B	0.52	0/1291	0.63	0/1749
1	C	0.50	0/1277	0.63	0/1729
1	D	0.42	0/1250	0.54	0/1693
All	All	0.50	0/5112	0.61	0/6924

There are no bond length outliers.

There are no bond angle outliers.

There are no chirality outliers.

There are no planarity outliers.

5.2 Too-close contacts [i](#)

In the following table, the Non-H and H(model) columns list the number of non-hydrogen atoms and hydrogen atoms in the chain respectively. The H(added) column lists the number of hydrogen atoms added and optimized by MolProbity. The Clashes column lists the number of clashes within the asymmetric unit, whereas Symm-Clashes lists symmetry-related clashes.

Mol	Chain	Non-H	H(model)	H(added)	Clashes	Symm-Clashes
1	A	1255	1250	1235	6	0
1	B	1252	1249	1236	8	0
1	C	1246	1243	1235	12	0
1	D	1227	1218	1220	23	0
2	D	36	21	19	1	0
3	A	120	0	0	2	0
3	B	110	0	0	1	0
3	C	96	0	0	3	0
3	D	42	0	0	0	0
All	All	5384	4981	4945	48	0

The all-atom clashscore is defined as the number of clashes found per 1000 atoms (including hydrogen atoms). The all-atom clashscore for this structure is 5.

All (48) close contacts within the same asymmetric unit are listed below, sorted by their clash magnitude.

Atom-1	Atom-2	Interatomic distance (Å)	Clash overlap (Å)
1:A:91[B]:GLU:OE2	1:A:94:LYS:NZ	2.13	0.77
1:B:144:ARG:NH2	1:D:136:ASP:OD2	2.32	0.62
1:A:83[A]:ARG:HD3	3:A:214:HOH:O	2.03	0.58
1:A:121:LEU:HD12	1:A:148:TRP:CD2	2.40	0.57
1:D:92:VAL:O	1:D:96:VAL:HG23	2.05	0.56
1:D:121:LEU:HD12	1:D:148:TRP:CD2	2.40	0.55
1:D:113:VAL:O	1:D:113:VAL:HG23	2.08	0.54
1:D:2:PRO:HG3	1:D:133:ASP:HA	1.91	0.53
1:D:128:LEU:C	1:D:128:LEU:HD23	2.35	0.52
1:D:31:ASN:N	2:D:201:APR:O1D	2.43	0.51
1:A:40:LYS:NZ	3:A:203:HOH:O	2.44	0.51
1:C:121:LEU:C	1:C:121:LEU:HD23	2.36	0.50
1:D:121:LEU:C	1:D:121:LEU:HD23	2.36	0.50
1:D:43:GLU:HG2	1:D:60:CYS:SG	2.52	0.50
1:C:149:GLU:OE2	3:C:201:HOH:O	2.19	0.49
1:D:108:LEU:HD11	1:D:152:ILE:HD11	1.95	0.49
1:D:153:SER:O	1:D:157:GLN:HG2	2.13	0.48
1:B:43:GLU:HG2	1:B:60:CYS:SG	2.54	0.48
1:D:87:ALA:O	1:D:90:ARG:N	2.48	0.47
1:B:15:ASP:N	3:B:202:HOH:O	2.30	0.47
1:B:121:LEU:C	1:B:121:LEU:HD23	2.40	0.47
1:C:8[A]:ARG:HA	1:C:143:CYS:O	2.16	0.46
1:C:90:ARG:NH2	3:C:205:HOH:O	2.39	0.46
1:C:118:LYS:HD2	1:C:120:ARG:NH2	2.30	0.46
1:D:57:THR:HG21	1:D:99:LEU:HD11	1.96	0.46
1:D:125:LEU:HG	1:D:129:PHE:CE2	2.52	0.45
1:D:85:LEU:HD13	1:D:110:SER:HB2	1.99	0.45
1:B:21:ASN:OD1	1:B:34:CYS:HA	2.17	0.44
1:C:90:ARG:NH1	3:C:210:HOH:O	2.51	0.44
1:C:55:ALA:HA	1:C:67:HIS:O	2.18	0.43
1:D:4:TYR:O	1:D:5:ARG:HG3	2.18	0.43
1:D:43:GLU:H	1:D:43:GLU:CD	2.27	0.43
1:C:8[B]:ARG:HA	1:C:143:CYS:O	2.19	0.43
1:D:121:LEU:HD23	1:D:121:LEU:O	2.18	0.43
1:C:121:LEU:HD12	1:C:148:TRP:CD2	2.54	0.42
1:A:106[B]:ILE:HD11	1:A:132:MET:HE2	2.02	0.42
1:D:5:ARG:NH1	1:D:140:VAL:HG22	2.35	0.42

Continued on next page...

Continued from previous page...

Atom-1	Atom-2	Interatomic distance (Å)	Clash overlap (Å)
1:C:40:LYS:HG3	1:C:41:TRP:CD2	2.55	0.42
1:B:44:SER:HB3	1:B:60:CYS:HB2	2.01	0.41
1:D:73:PHE:C	1:D:75:ASN:H	2.29	0.41
1:A:14:ASN:HB2	1:A:16:GLU:OE1	2.20	0.41
1:B:25:PRO:HA	1:B:50:THR:O	2.20	0.41
1:D:51:PRO:O	1:D:54:THR:OG1	2.35	0.41
1:D:128:LEU:HD23	1:D:128:LEU:O	2.20	0.41
1:D:148:TRP:O	1:D:149:GLU:C	2.63	0.41
1:C:6:VAL:HA	1:C:141:ILE:O	2.22	0.40

There are no symmetry-related clashes.

5.3 Torsion angles [i](#)

5.3.1 Protein backbone [i](#)

In the following table, the Percentiles column shows the percent Ramachandran outliers of the chain as a percentile score with respect to all X-ray entries followed by that with respect to entries of similar resolution.

The Analysed column shows the number of residues for which the backbone conformation was analysed, and the total number of residues.

Mol	Chain	Analysed	Favoured	Allowed	Outliers	Percentiles	
1	A	163/168 (97%)	161 (99%)	2 (1%)	0	100	100
1	B	163/168 (97%)	161 (99%)	2 (1%)	0	100	100
1	C	161/168 (96%)	159 (99%)	2 (1%)	0	100	100
1	D	158/168 (94%)	142 (90%)	16 (10%)	0	100	100
All	All	645/672 (96%)	623 (97%)	22 (3%)	0	100	100

There are no Ramachandran outliers to report.

5.3.2 Protein sidechains [i](#)

In the following table, the Percentiles column shows the percent sidechain outliers of the chain as a percentile score with respect to all X-ray entries followed by that with respect to entries of similar resolution.

The Analysed column shows the number of residues for which the sidechain conformation was analysed, and the total number of residues.

Mol	Chain	Analysed	Rotameric	Outliers	Percentiles	
1	A	138/141 (98%)	134 (97%)	4 (3%)	37	19
1	B	138/141 (98%)	133 (96%)	5 (4%)	30	12
1	C	136/141 (96%)	134 (98%)	2 (2%)	60	47
1	D	133/141 (94%)	127 (96%)	6 (4%)	23	7
All	All	545/564 (97%)	528 (97%)	17 (3%)	34	17

All (17) residues with a non-rotameric sidechain are listed below:

Mol	Chain	Res	Type
1	A	3	SER
1	A	9	MET
1	A	80	GLU
1	A	153	SER
1	B	39	LYS
1	B	40	LYS
1	B	91	GLU
1	B	146	LYS
1	B	154	GLU
1	C	39	LYS
1	C	43	GLU
1	D	43	GLU
1	D	79	SER
1	D	94	LYS
1	D	113	VAL
1	D	115	SER
1	D	135	THR

Sometimes sidechains can be flipped to improve hydrogen bonding and reduce clashes. All (1) such sidechains are listed below:

Mol	Chain	Res	Type
1	D	127	HIS

5.3.3 RNA ⓘ

There are no RNA molecules in this entry.

5.4 Non-standard residues in protein, DNA, RNA chains ⓘ

There are no non-standard protein/DNA/RNA residues in this entry.

5.5 Carbohydrates [i](#)

There are no oligosaccharides in this entry.

5.6 Ligand geometry [i](#)

1 ligand is modelled in this entry.

In the following table, the Counts columns list the number of bonds (or angles) for which Mogul statistics could be retrieved, the number of bonds (or angles) that are observed in the model and the number of bonds (or angles) that are defined in the Chemical Component Dictionary. The Link column lists molecule types, if any, to which the group is linked. The Z score for a bond length (or angle) is the number of standard deviations the observed value is removed from the expected value. A bond length (or angle) with $|Z| > 2$ is considered an outlier worth inspection. RMSZ is the root-mean-square of all Z scores of the bond lengths (or angles).

Mol	Type	Chain	Res	Link	Bond lengths			Bond angles		
					Counts	RMSZ	# Z > 2	Counts	RMSZ	# Z > 2
2	APR	D	201	-	35,39,39	4.46	15 (42%)	42,60,60	1.44	6 (14%)

In the following table, the Chirals column lists the number of chiral outliers, the number of chiral centers analysed, the number of these observed in the model and the number defined in the Chemical Component Dictionary. Similar counts are reported in the Torsion and Rings columns. '-' means no outliers of that kind were identified.

Mol	Type	Chain	Res	Link	Chirals	Torsions	Rings
2	APR	D	201	-	-	6/18/54/54	0/4/4/4

All (15) bond length outliers are listed below:

Mol	Chain	Res	Type	Atoms	Z	Observed(Å)	Ideal(Å)
2	D	201	APR	O4'-C1'	16.53	1.62	1.40
2	D	201	APR	O4D-C1D	-11.54	1.29	1.43
2	D	201	APR	O4D-C4D	7.37	1.61	1.45
2	D	201	APR	C3D-C4D	-6.18	1.37	1.53
2	D	201	APR	PB-O3A	5.92	1.65	1.59
2	D	201	APR	O4'-C4'	-5.63	1.32	1.45
2	D	201	APR	C1D-C2D	5.35	1.58	1.52
2	D	201	APR	PA-O3A	5.16	1.65	1.59
2	D	201	APR	C6-N6	3.14	1.45	1.34
2	D	201	APR	O2'-C2'	3.08	1.50	1.43
2	D	201	APR	O3D-C3D	3.03	1.50	1.43
2	D	201	APR	C4-N3	2.95	1.39	1.35
2	D	201	APR	O2D-C2D	-2.67	1.36	1.43

Continued on next page...

Continued from previous page...

Mol	Chain	Res	Type	Atoms	Z	Observed(Å)	Ideal(Å)
2	D	201	APR	O3'-C3'	-2.50	1.36	1.43
2	D	201	APR	C1'-N9	-2.19	1.44	1.49

All (6) bond angle outliers are listed below:

Mol	Chain	Res	Type	Atoms	Z	Observed(°)	Ideal(°)
2	D	201	APR	N3-C2-N1	-4.28	122.86	128.67
2	D	201	APR	O4D-C1D-C2D	-3.13	100.34	104.67
2	D	201	APR	C1D-C2D-C3D	-3.00	98.60	102.29
2	D	201	APR	O3D-C3D-C2D	-2.97	102.31	111.82
2	D	201	APR	O4'-C1'-N9	-2.82	105.01	108.75
2	D	201	APR	N6-C6-N1	2.04	122.69	118.33

There are no chirality outliers.

All (6) torsion outliers are listed below:

Mol	Chain	Res	Type	Atoms
2	D	201	APR	C3D-C4D-C5D-O5D
2	D	201	APR	C3'-C4'-C5'-O5'
2	D	201	APR	O4'-C4'-C5'-O5'
2	D	201	APR	C5'-O5'-PA-O3A
2	D	201	APR	O4D-C4D-C5D-O5D
2	D	201	APR	PB-O3A-PA-O2A

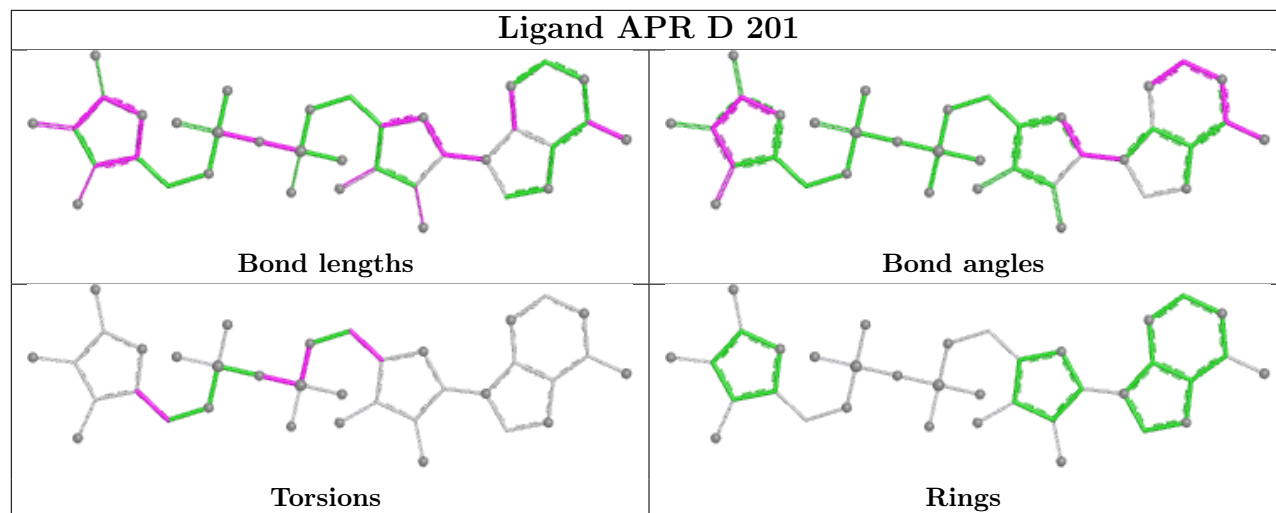
There are no ring outliers.

1 monomer is involved in 1 short contact:

Mol	Chain	Res	Type	Clashes	Symm-Clashes
2	D	201	APR	1	0

The following is a two-dimensional graphical depiction of Mogul quality analysis of bond lengths, bond angles, torsion angles, and ring geometry for all instances of the Ligand of Interest. In addition, ligands with molecular weight > 250 and outliers as shown on the validation Tables will also be included. For torsion angles, if less than 5% of the Mogul distribution of torsion angles is within 10 degrees of the torsion angle in question, then that torsion angle is considered an outlier. Any bond that is central to one or more torsion angles identified as an outlier by Mogul will be highlighted in the graph. For rings, the root-mean-square deviation (RMSD) between the ring in question and similar rings identified by Mogul is calculated over all ring torsion angles. If the average RMSD is greater than 60 degrees and the minimal RMSD between the ring in question and any Mogul-identified rings is also greater than 60 degrees, then that ring is considered an outlier. The outliers are highlighted in purple. The color gray indicates Mogul did not find sufficient

equivalents in the CSD to analyse the geometry.



5.7 Other polymers [i](#)

There are no such residues in this entry.

5.8 Polymer linkage issues [i](#)

There are no chain breaks in this entry.

6 Fit of model and data [i](#)

6.1 Protein, DNA and RNA chains [i](#)

In the following table, the column labelled ‘#RSRZ> 2’ contains the number (and percentage) of RSRZ outliers, followed by percent RSRZ outliers for the chain as percentile scores relative to all X-ray entries and entries of similar resolution. The OWAB column contains the minimum, median, 95th percentile and maximum values of the occupancy-weighted average B-factor per residue. The column labelled ‘Q< 0.9’ lists the number of (and percentage) of residues with an average occupancy less than 0.9.

Mol	Chain	Analysed	<RSRZ>	#RSRZ>2	OWAB(Å ²)	Q<0.9
1	A	160/168 (95%)	-0.62	2 (1%) 74 75	11, 28, 53, 87	3 (1%)
1	B	160/168 (95%)	-0.43	0 100 100	12, 32, 57, 77	3 (1%)
1	C	160/168 (95%)	-0.42	1 (0%) 85 86	12, 34, 54, 67	2 (1%)
1	D	160/168 (95%)	0.59	11 (6%) 24 22	30, 56, 80, 114	0
All	All	640/672 (95%)	-0.22	14 (2%) 62 62	11, 35, 69, 114	8 (1%)

All (14) RSRZ outliers are listed below:

Mol	Chain	Res	Type	RSRZ
1	D	160	THR	3.1
1	A	83[A]	ARG	2.8
1	A	160	THR	2.8
1	D	85	LEU	2.7
1	D	130	THR	2.5
1	D	76	TYR	2.4
1	D	74	SER	2.4
1	D	116	GLY	2.3
1	D	73	PHE	2.2
1	D	79	SER	2.1
1	C	1	ALA	2.0
1	D	131	ALA	2.0
1	D	129	PHE	2.0
1	D	1	ALA	2.0

6.2 Non-standard residues in protein, DNA, RNA chains [i](#)

There are no non-standard protein/DNA/RNA residues in this entry.

6.3 Carbohydrates [i](#)

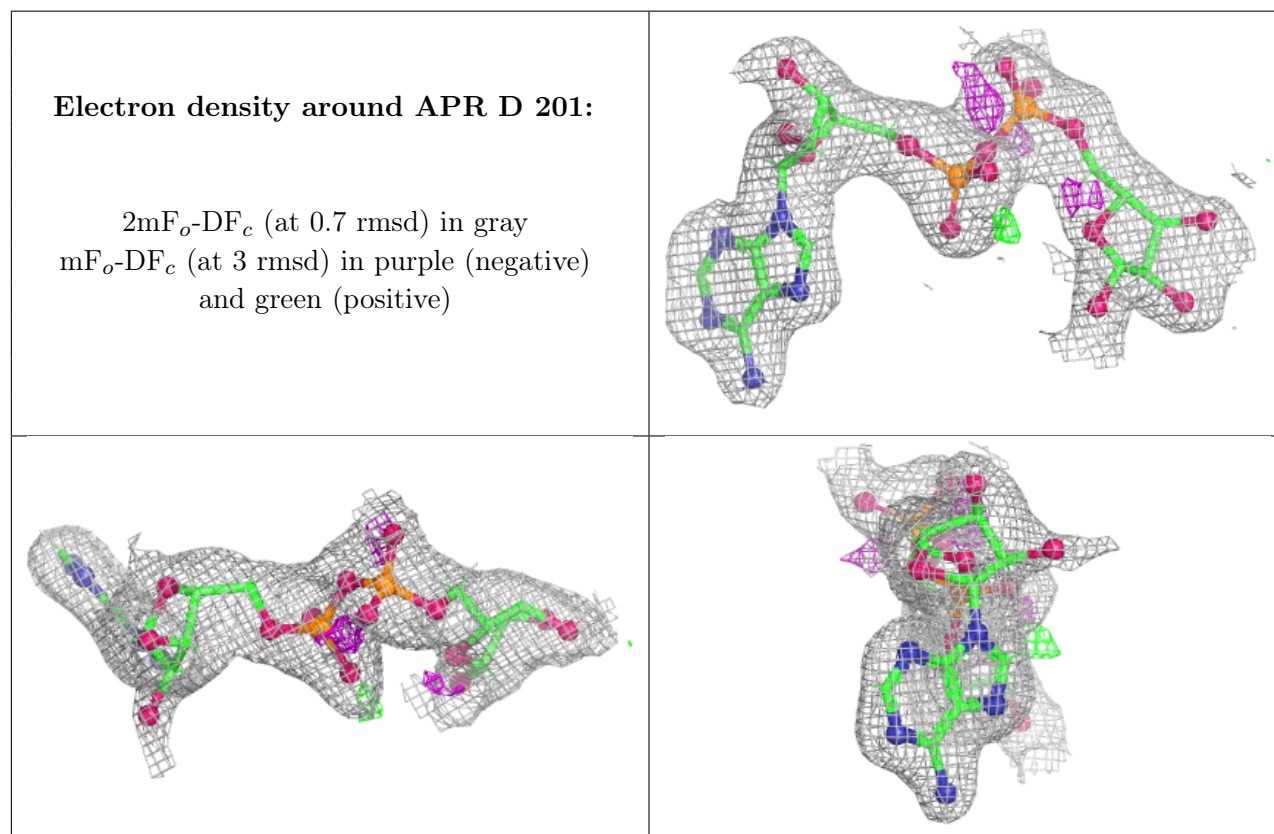
There are no oligosaccharides in this entry.

6.4 Ligands [i](#)

In the following table, the Atoms column lists the number of modelled atoms in the group and the number defined in the chemical component dictionary. The B-factors column lists the minimum, median, 95th percentile and maximum values of B factors of atoms in the group. The column labelled 'Q< 0.9' lists the number of atoms with occupancy less than 0.9.

Mol	Type	Chain	Res	Atoms	RSCC	RSR	B-factors(\AA^2)	Q<0.9
2	APR	D	201	36/36	0.92	0.09	29,52,66,74	0

The following is a graphical depiction of the model fit to experimental electron density of all instances of the Ligand of Interest. In addition, ligands with molecular weight > 250 and outliers as shown on the geometry validation Tables will also be included. Each fit is shown from different orientation to approximate a three-dimensional view.



6.5 Other polymers [i](#)

There are no such residues in this entry.