



## Full wwPDB EM Validation Report ⓘ

Dec 1, 2025 – 04:31 PM JST

PDB ID : 9X25 / pdb\_00009x25  
EMDB ID : EMD-66472  
Title : Target analog-bound type III-B Cmr complex of *Archaeoglobus fulgidus*  
Authors : Ishihara, K.; Numata, T.  
Deposited on : 2025-10-03  
Resolution : 3.40 Å (reported)  
Based on initial model : .

This is a Full wwPDB EM Validation Report for a publicly released PDB entry.

We welcome your comments at [validation@mail.wwpdb.org](mailto:validation@mail.wwpdb.org)

A user guide is available at

<https://www.wwpdb.org/validation/2017/EMValidationReportHelp>  
with specific help available everywhere you see the ⓘ symbol.

The types of validation reports are described at

<http://www.wwpdb.org/validation/2017/FAQs#types>.

---

The following versions of software and data (see [references ⓘ](#)) were used in the production of this report:

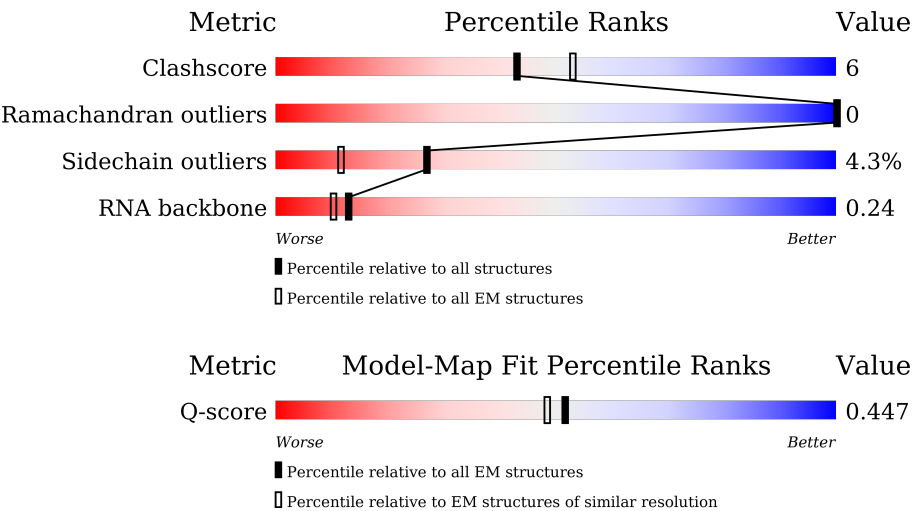
EMDB validation analysis : 0.0.1.dev129  
MolProbity : 4-5-2 with Phenix2.0  
Percentile statistics : 20231227.v01 (using entries in the PDB archive December 27th 2023)  
EM percentile statistics : 202505.v01 (Using data in the EMDB archive up until May 2025)  
MapQ : 1.9.13  
Ideal geometry (proteins) : Engh & Huber (2001)  
Ideal geometry (DNA, RNA) : Parkinson et al. (1996)  
Validation Pipeline (wwPDB-VP) : 2.46

# 1 Overall quality at a glance i

The following experimental techniques were used to determine the structure:  
*ELECTRON MICROSCOPY*

The reported resolution of this entry is 3.40 Å.

Percentile scores (ranging between 0-100) for global validation metrics of the entry are shown in the following graphic. The table shows the number of entries on which the scores are based.



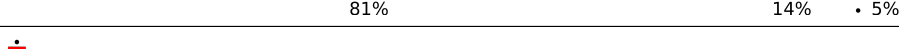



Metric	Whole archive (#Entries)	EM structures (#Entries)	Similar EM resolution (#Entries, resolution range(Å))
Clashscore	210492	15764	-
Ramachandran outliers	207382	16835	-
Sidechain outliers	206894	16415	-
RNA backbone	6643	2191	-
Q-score	-	25397	14717 ( 2.90 - 3.90 )

The table below summarises the geometric issues observed across the polymeric chains and their fit to the map. The red, orange, yellow and green segments of the bar indicate the fraction of residues that contain outliers for  $\geq 3$ , 2, 1 and 0 types of geometric quality criteria respectively. A grey segment represents the fraction of residues that are not modelled. The numeric value for each fraction is indicated below the corresponding segment, with a dot representing fractions  $\leq 5\%$ . The upper red bar (where present) indicates the fraction of residues that have poor fit to the EM map (all-atom inclusion  $< 40\%$ ). The numeric value is given above the bar.

Mol	Chain	Length	Quality of chain
1	A	39	<div><div>36%</div><div>23%</div><div>15%</div><div>26%</div></div>
2	B	1024	<div><div>82%</div><div>12%</div><div>6%</div></div>
3	C	341	<div><div>80%</div><div>20%</div></div>

Continued on next page...

*Continued from previous page...*

Mol	Chain	Length	Quality of chain
4	D	355	
4	E	355	
4	F	355	
5	G	155	
5	H	155	
6	I	349	
7	K	31	

## 2 Entry composition

There are 7 unique types of molecules in this entry. The entry contains 21810 atoms, of which 0 are hydrogens and 0 are deuteriums.

In the tables below, the AltConf column contains the number of residues with at least one atom in alternate conformation and the Trace column contains the number of residues modelled with at most 2 atoms.

- Molecule 1 is a RNA chain called crRNA.

Mol	Chain	Residues	Atoms					AltConf	Trace
1	A	29	Total	C	N	O	P	0	0
			616	276	107	205	28		

- Molecule 2 is a protein called GGDEF domain-containing protein.

Mol	Chain	Residues	Atoms					AltConf	Trace
2	B	965	Total	C	N	O	S	0	0
			6800	4352	1189	1246	13		

There are 20 discrepancies between the modelled and reference sequences:

Chain	Residue	Modelled	Actual	Comment	Reference
B	-19	MET	-	initiating methionine	UNP O28412
B	-18	GLY	-	expression tag	UNP O28412
B	-17	SER	-	expression tag	UNP O28412
B	-16	SER	-	expression tag	UNP O28412
B	-15	HIS	-	expression tag	UNP O28412
B	-14	HIS	-	expression tag	UNP O28412
B	-13	HIS	-	expression tag	UNP O28412
B	-12	HIS	-	expression tag	UNP O28412
B	-11	HIS	-	expression tag	UNP O28412
B	-10	HIS	-	expression tag	UNP O28412
B	-9	SER	-	expression tag	UNP O28412
B	-8	SER	-	expression tag	UNP O28412
B	-7	GLY	-	expression tag	UNP O28412
B	-6	LEU	-	expression tag	UNP O28412
B	-5	VAL	-	expression tag	UNP O28412
B	-4	PRO	-	expression tag	UNP O28412
B	-3	ARG	-	expression tag	UNP O28412
B	-2	GLY	-	expression tag	UNP O28412
B	-1	SER	-	expression tag	UNP O28412
B	0	HIS	-	expression tag	UNP O28412

- Molecule 3 is a protein called Type III-B CRISPR module-associated protein Cmr3.

Mol	Chain	Residues	Atoms					AltConf	Trace
3	C	341	Total	C	N	O	S	0	0
			2638	1721	448	461	8		

- Molecule 4 is a protein called CRISPR type III-associated protein domain-containing protein.

Mol	Chain	Residues	Atoms					AltConf	Trace
4	D	342	Total	C	N	O	S	0	0
			2348	1498	415	433	2		
4	E	345	Total	C	N	O	S	0	0
			2363	1514	416	432	1		
4	F	338	Total	C	N	O	S	0	0
			2399	1551	412	435	1		

- Molecule 5 is a protein called CRISPR system Cmr subunit Cmr5.

Mol	Chain	Residues	Atoms					AltConf	Trace
5	G	150	Total	C	N	O	S	0	0
			1110	720	179	209	2		
5	H	149	Total	C	N	O	S	0	0
			1053	679	175	197	2		

- Molecule 6 is a protein called CRISPR type III-associated protein domain-containing protein.

Mol	Chain	Residues	Atoms					AltConf	Trace
6	I	312	Total	C	N	O	S	0	0
			2054	1319	351	382	2		

There are 6 discrepancies between the modelled and reference sequences:

Chain	Residue	Modelled	Actual	Comment	Reference
I	344	HIS	-	expression tag	UNP O28418
I	345	HIS	-	expression tag	UNP O28418
I	346	HIS	-	expression tag	UNP O28418
I	347	HIS	-	expression tag	UNP O28418
I	348	HIS	-	expression tag	UNP O28418
I	349	HIS	-	expression tag	UNP O28418

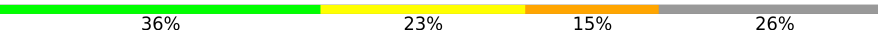
- Molecule 7 is a DNA chain called Target analog DNA.

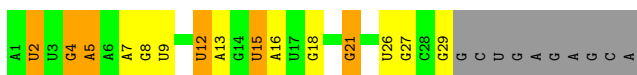
Mol	Chain	Residues	Atoms					AltConf	Trace
7	K	21	Total	C	N	O	P	0	0
			429	203	85	120	21		

### 3 Residue-property plots


These plots are drawn for all protein, RNA, DNA and oligosaccharide chains in the entry. The first graphic for a chain summarises the proportions of the various outlier classes displayed in the second graphic. The second graphic shows the sequence view annotated by issues in geometry and atom inclusion in map density. Residues are color-coded according to the number of geometric quality criteria for which they contain at least one outlier: green = 0, yellow = 1, orange = 2 and red = 3 or more. A red diamond above a residue indicates a poor fit to the EM map for this residue (all-atom inclusion < 40%). Stretches of 2 or more consecutive residues without any outlier are shown as a green connector. Residues present in the sample, but not in the model, are shown in grey.

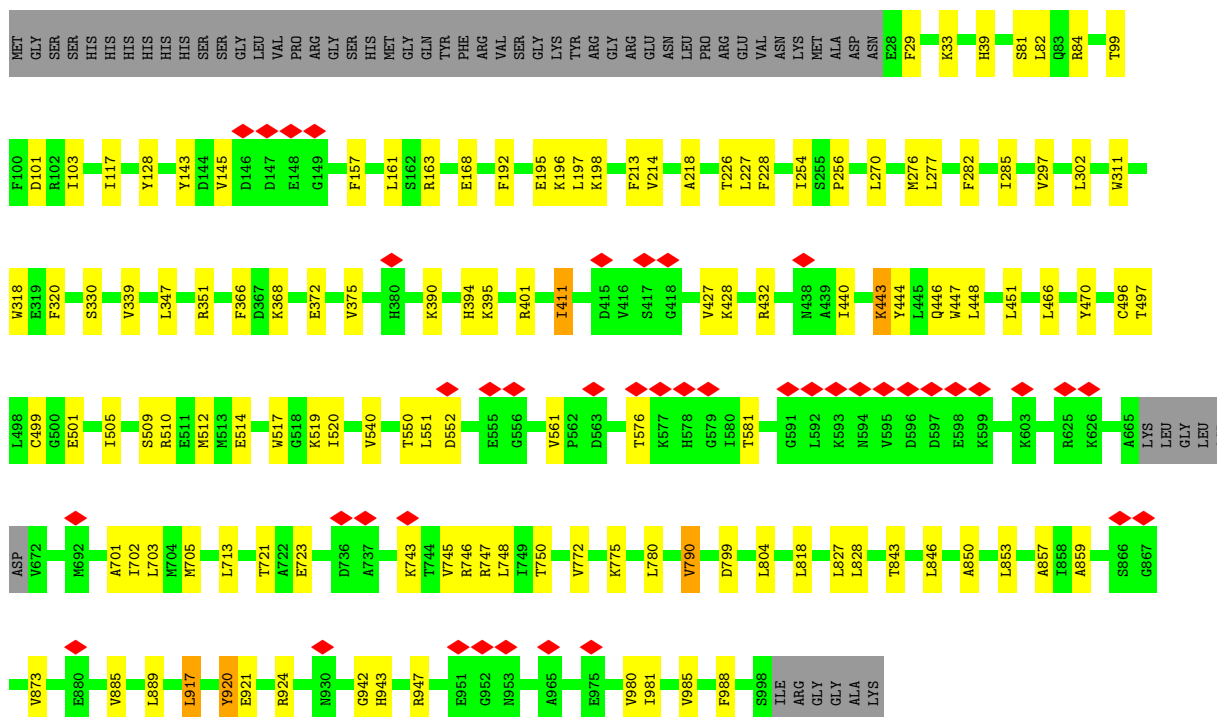
#### • Molecule 1: crRNA

Chain A: 




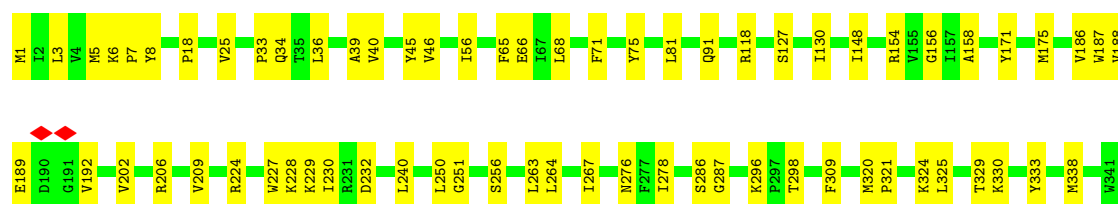
#### • Molecule 2: GGDEF domain-containing protein

Chain B: 

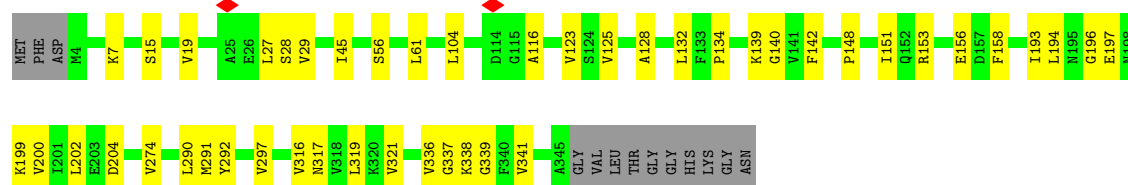
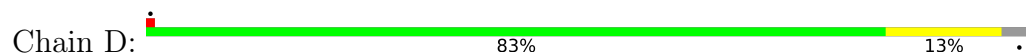


#### • Molecule 3: Type III-B CRISPR module-associated protein Cmr3

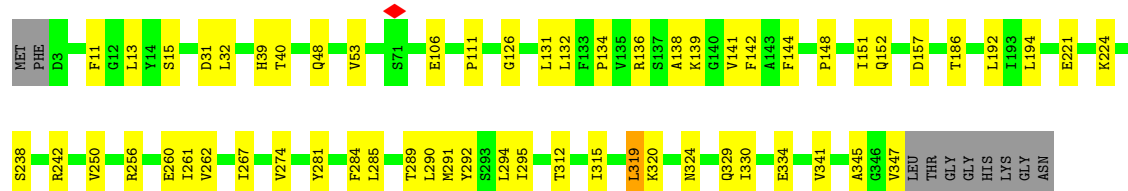
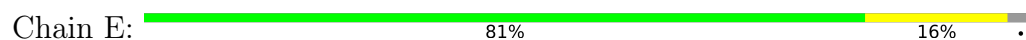
Chain C: 



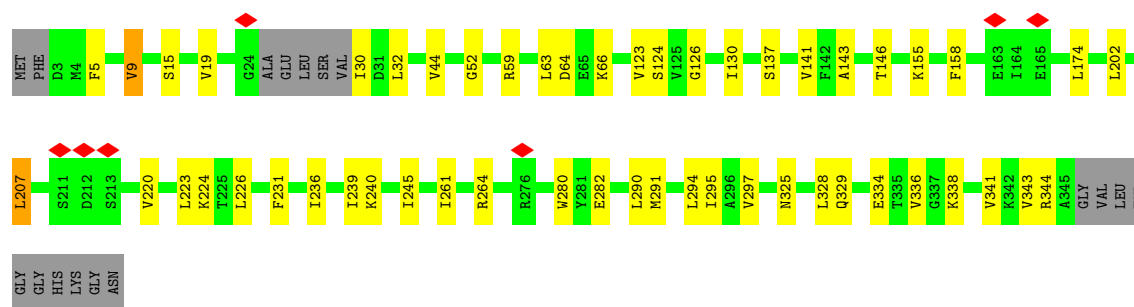
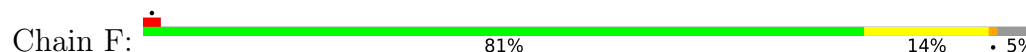
- Molecule 4: CRISPR type III-associated protein domain-containing protein



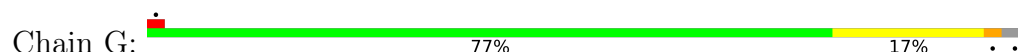
- Molecule 4: CRISPR type III-associated protein domain-containing protein



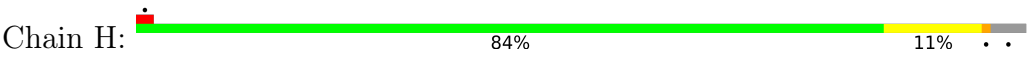
- Molecule 4: CRISPR type III-associated protein domain-containing protein



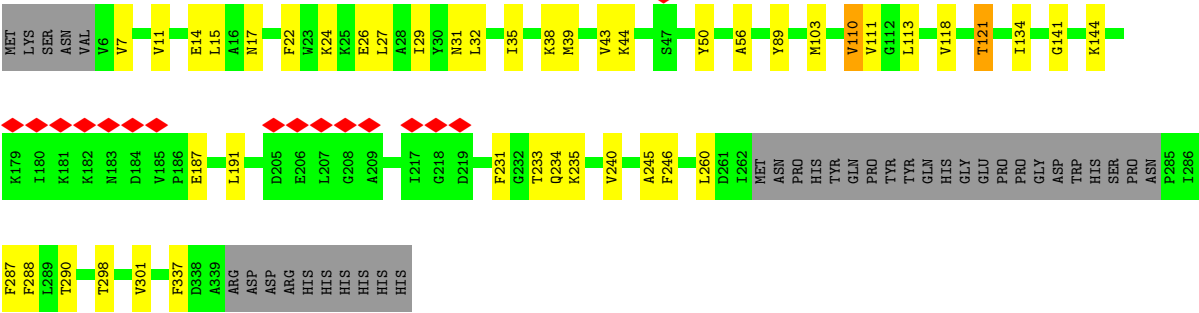
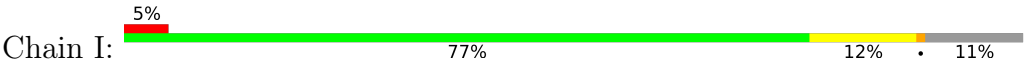
- Molecule 5: CRISPR system Cmr subunit Cmr5



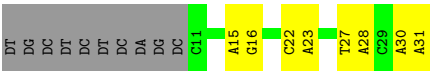
- Molecule 5: CRISPR system Cmr subunit Cmr5



● Molecule 6: CRISPR type III-associated protein domain-containing protein



● Molecule 7: Target analog DNA





## 4 Experimental information

Property	Value	Source
EM reconstruction method	SINGLE PARTICLE	Depositor
Imposed symmetry	POINT, C1	Depositor
Number of particles used	81835	Depositor
Resolution determination method	FSC 0.143 CUT-OFF	Depositor
CTF correction method	PHASE FLIPPING AND AMPLITUDE CORRECTION	Depositor
Microscope	FEI TALOS ARCTICA	Depositor
Voltage (kV)	200	Depositor
Electron dose ( $e^-/\text{\AA}^2$ )	50	Depositor
Minimum defocus (nm)	1000	Depositor
Maximum defocus (nm)	2500	Depositor
Magnification	120000	Depositor
Image detector	FEI FALCON III (4k x 4k)	Depositor
Maximum map value	0.967	Depositor
Minimum map value	-0.211	Depositor
Average map value	-0.000	Depositor
Map value standard deviation	0.025	Depositor
Recommended contour level	0.27	Depositor
Map size ( $\text{\AA}$ )	440.0, 440.0, 440.0	wwPDB
Map dimensions	500, 500, 500	wwPDB
Map angles ( $^\circ$ )	90.0, 90.0, 90.0	wwPDB
Pixel spacing ( $\text{\AA}$ )	0.88, 0.88, 0.88	Depositor

## 5 Model quality [i](#)

### 5.1 Standard geometry [i](#)

The Z score for a bond length (or angle) is the number of standard deviations the observed value is removed from the expected value. A bond length (or angle) with  $|Z| > 5$  is considered an outlier worth inspection. RMSZ is the root-mean-square of all Z scores of the bond lengths (or angles).

Mol	Chain	Bond lengths		Bond angles	
		RMSZ	# Z  >5	RMSZ	# Z  >5
1	A	0.26	0/688	0.48	0/1071
2	B	0.17	0/6931	0.27	0/9450
3	C	0.20	0/2701	0.30	0/3644
4	D	0.21	0/2382	0.29	0/3249
4	E	0.20	0/2398	0.30	0/3273
4	F	0.21	0/2438	0.29	0/3320
5	G	0.21	0/1131	0.34	0/1533
5	H	0.19	0/1072	0.30	0/1459
6	I	0.16	0/2092	0.26	0/2868
7	K	0.23	0/482	0.30	0/740
All	All	0.19	0/22315	0.29	0/30607

There are no bond length outliers.

There are no bond angle outliers.

There are no chirality outliers.

There are no planarity outliers.

### 5.2 Too-close contacts [i](#)

In the following table, the Non-H and H(model) columns list the number of non-hydrogen atoms and hydrogen atoms in the chain respectively. The H(added) column lists the number of hydrogen atoms added and optimized by MolProbity. The Clashes column lists the number of clashes within the asymmetric unit, whereas Symm-Clashes lists symmetry-related clashes.

Mol	Chain	Non-H	H(model)	H(added)	Clashes	Symm-Clashes
1	A	616	0	311	11	0
2	B	6800	0	6000	68	0
3	C	2638	0	2590	41	0
4	D	2348	0	2110	28	0
4	E	2363	0	2122	36	0
4	F	2399	0	2225	28	0

*Continued on next page...*

*Continued from previous page...*

Mol	Chain	Non-H	H(model)	H(added)	Clashes	Symm-Clashes
5	G	1110	0	1057	19	0
5	H	1053	0	950	16	0
6	I	2054	0	1660	33	0
7	K	429	0	234	6	0
All	All	21810	0	19259	263	0

The all-atom clashscore is defined as the number of clashes found per 1000 atoms (including hydrogen atoms). The all-atom clashscore for this structure is 6.

All (263) close contacts within the same asymmetric unit are listed below, sorted by their clash magnitude.

Atom-1	Atom-2	Interatomic distance (Å)	Clash overlap (Å)
4:E:132:LEU:HB2	4:E:290:LEU:HB3	1.59	0.84
3:C:224:ARG:HH11	3:C:320:MET:HE1	1.53	0.73
3:C:5:MET:HE3	3:C:209:VAL:HG21	1.72	0.72
3:C:45:TYR:HB2	3:C:56:ILE:HG13	1.72	0.70
4:D:15:SER:HA	4:D:341:VAL:HG12	1.73	0.70
5:G:97:TRP:HE1	5:G:135:GLU:HG3	1.54	0.69
3:C:224:ARG:HD3	3:C:320:MET:HE1	1.74	0.69
4:D:132:LEU:HB2	4:D:290:LEU:HB3	1.77	0.67
6:I:35:ILE:HA	6:I:39:MET:HE3	1.75	0.67
2:B:282:PHE:HZ	2:B:311:TRP:HB2	1.60	0.67
4:E:192:LEU:HD21	4:E:242:ARG:HG2	1.75	0.67
4:E:157:ASP:HB3	4:E:294:LEU:HD21	1.75	0.66
4:E:148:PRO:HA	4:E:151:ILE:HD12	1.78	0.66
2:B:497:THR:HA	3:C:18:PRO:HG2	1.77	0.65
2:B:99:THR:HG23	2:B:101:ASP:H	1.62	0.64
2:B:873:VAL:HG23	2:B:947:ARG:HB2	1.80	0.64
4:E:139:LYS:HD3	4:E:194:LEU:HA	1.80	0.63
5:G:32:GLN:HB3	5:G:151:LEU:HD22	1.81	0.63
2:B:703:LEU:HB3	2:B:790:VAL:HG23	1.80	0.62
6:I:134:ILE:HB	6:I:245:ALA:HB3	1.81	0.62
1:A:7:A:H1'	3:C:158:ALA:HB2	1.82	0.62
3:C:91:GLN:HE22	3:C:118:ARG:HB2	1.64	0.62
4:E:138:ALA:HB1	6:I:29:ILE:HD12	1.80	0.62
4:F:220:VAL:HA	4:F:223:LEU:HD12	1.81	0.62
2:B:218:ALA:HB2	2:B:227:LEU:HA	1.82	0.62
7:K:30:DA:H3'	7:K:31:DA:H8	1.65	0.61
4:E:53:VAL:HG21	4:E:330:ILE:HD13	1.83	0.60
3:C:6:LYS:HD2	3:C:7:PRO:HD2	1.84	0.60
4:D:29:VAL:HG21	5:H:137:LEU:HD22	1.84	0.60

*Continued on next page...*

*Continued from previous page...*

Atom-1	Atom-2	Interatomic distance (Å)	Clash overlap (Å)
4:E:267:ILE:HA	4:E:274:VAL:HA	1.84	0.59
2:B:198:LYS:HB2	2:B:214:VAL:HG11	1.85	0.59
2:B:81:SER:HA	2:B:84:ARG:HB2	1.84	0.59
4:E:312:THR:HA	4:E:315:ILE:HD12	1.82	0.59
4:F:123:VAL:HG12	4:F:297:VAL:HG12	1.84	0.59
4:D:134:PRO:HB3	4:D:142:PHE:HE1	1.69	0.58
6:I:260:LEU:HD11	6:I:287:PHE:HB3	1.86	0.58
2:B:168:GLU:HG2	2:B:197:LEU:HD11	1.86	0.57
4:D:19:VAL:HG22	4:D:339:GLY:HA2	1.85	0.57
4:F:143:ALA:HB3	4:F:202:LEU:HD21	1.86	0.57
5:G:25:TYR:HD2	5:G:31:VAL:HG11	1.68	0.57
5:H:71:TYR:HB2	5:H:95:SER:HB3	1.87	0.57
2:B:576:THR:HG23	2:B:581:THR:HA	1.86	0.56
3:C:227:TRP:HA	3:C:230:ILE:HD12	1.87	0.56
4:D:123:VAL:HG12	4:D:297:VAL:HG22	1.86	0.56
4:F:220:VAL:HG21	4:F:240:LYS:HG3	1.86	0.56
3:C:263:LEU:H	3:C:263:LEU:HD12	1.71	0.56
4:D:128:ALA:HA	4:D:292:TYR:O	2.06	0.56
3:C:251:GLY:HA3	3:C:256:SER:H	1.69	0.56
2:B:509:SER:OG	2:B:512:MET:HG3	2.06	0.56
3:C:206:ARG:HD2	4:F:5:PHE:HZ	1.70	0.56
4:F:146:THR:HG23	4:F:245:ILE:HG23	1.87	0.56
5:G:121:ILE:HD12	5:G:129:VAL:HG13	1.88	0.55
4:F:130:ILE:HA	4:F:291:MET:HG2	1.88	0.55
4:F:59:ARG:HE	4:F:63:LEU:HD22	1.70	0.55
4:E:262:VAL:O	4:E:281:TYR:HA	2.06	0.55
4:F:32:LEU:HD12	4:F:282:GLU:HG2	1.89	0.55
4:E:106:GLU:HG3	4:E:111:PRO:HA	1.89	0.55
4:E:136:ARG:HB3	6:I:31:ASN:HD22	1.72	0.54
3:C:240:LEU:HD11	3:C:338:MET:HB3	1.89	0.54
2:B:705:MET:HE1	2:B:804:LEU:HD13	1.90	0.54
3:C:286:SER:HB3	3:C:298:THR:HA	1.90	0.54
4:D:194:LEU:HG	4:D:196:GLY:H	1.73	0.54
6:I:103:MET:HB2	6:I:337:PHE:HD2	1.71	0.54
2:B:917:LEU:HD12	5:H:146:PHE:HE1	1.72	0.53
4:D:193:ILE:HA	4:D:200:VAL:HG22	1.89	0.53
4:F:30:ILE:HD11	4:F:261:ILE:HD13	1.89	0.53
2:B:517:TRP:HA	2:B:520:ILE:HG22	1.91	0.53
4:E:260:GLU:HB2	4:E:284:PHE:HB2	1.89	0.53
6:I:121:THR:HG21	6:I:288:PHE:HB3	1.91	0.53
1:A:21:G:H21	4:D:274:VAL:HG11	1.72	0.53

*Continued on next page...*

*Continued from previous page...*

Atom-1	Atom-2	Interatomic distance (Å)	Clash overlap (Å)
3:C:227:TRP:HB2	3:C:321:PRO:HB3	1.90	0.53
6:I:32:LEU:HA	6:I:35:ILE:HD12	1.89	0.53
2:B:82:LEU:HA	2:B:451:LEU:HD21	1.91	0.53
7:K:15:DA:H2''	7:K:16:DG:H8	1.74	0.53
3:C:33:PRO:HD2	3:C:333:TYR:HE1	1.73	0.52
3:C:250:LEU:HD11	3:C:325:LEU:HD13	1.91	0.52
4:E:131:LEU:HB2	4:E:292:TYR:HD1	1.73	0.52
6:I:144:LYS:HZ2	6:I:231:PHE:HB3	1.74	0.52
2:B:772:VAL:HA	2:B:775:LYS:HD2	1.92	0.52
4:E:320:LYS:HZ2	4:E:345:ALA:HB3	1.74	0.52
6:I:233:THR:HG23	6:I:235:LYS:H	1.75	0.52
5:G:122:MET:HA	5:G:122:MET:HE3	1.92	0.52
4:D:134:PRO:HB3	4:D:142:PHE:CE1	2.45	0.51
6:I:110:VAL:HB	6:I:290:THR:HG22	1.91	0.51
4:E:15:SER:HA	4:E:341:VAL:HG12	1.92	0.51
4:E:134:PRO:HD3	4:E:289:THR:HA	1.92	0.51
5:G:118:LEU:O	5:G:122:MET:HG2	2.10	0.51
6:I:43:VAL:HB	6:I:56:ALA:HB1	1.92	0.51
7:K:22:DC:N4	7:K:23:DA:H62	2.09	0.51
1:A:15:U:H1'	1:A:16:A:C8	2.45	0.51
7:K:27:DT:H2''	7:K:28:DA:H5''	1.92	0.51
2:B:780:LEU:HA	2:B:790:VAL:HG12	1.92	0.51
4:F:290:LEU:HD12	4:F:291:MET:H	1.75	0.51
2:B:942:GLY:HA3	2:B:988:PHE:CZ	2.45	0.51
6:I:14:GLU:HG2	6:I:15:LEU:N	2.25	0.51
1:A:4:G:H2'	1:A:5:A:C8	2.45	0.51
4:E:136:ARG:HB3	6:I:31:ASN:ND2	2.25	0.51
2:B:443:LYS:HG3	2:B:444:TYR:N	2.26	0.50
2:B:428:LYS:HB3	2:B:432:ARG:HH21	1.77	0.50
3:C:324:LYS:HG2	3:C:329:THR:HB	1.94	0.50
5:G:6:ILE:HG22	5:G:108:PHE:HB2	1.93	0.50
2:B:850:ALA:HB2	2:B:859:ALA:HB2	1.93	0.49
5:G:97:TRP:CG	5:G:139:ILE:HD12	2.47	0.49
4:E:142:PHE:CG	4:E:142:PHE:O	2.65	0.49
4:E:141:VAL:HG12	6:I:31:ASN:OD1	2.12	0.49
4:F:158:PHE:HD2	4:F:174:LEU:HD21	1.76	0.49
6:I:44:LYS:HA	6:I:50:TYR:HA	1.94	0.49
2:B:920:TYR:HE1	2:B:924:ARG:HH21	1.61	0.49
4:F:224:LYS:HE3	4:F:236:ILE:HG12	1.94	0.48
3:C:7:PRO:HA	3:C:209:VAL:HG12	1.95	0.48
3:C:206:ARG:HG2	4:F:124:SER:HB2	1.95	0.48

*Continued on next page...*

*Continued from previous page...*

Atom-1	Atom-2	Interatomic distance (Å)	Clash overlap (Å)
4:F:15:SER:HA	4:F:341:VAL:HG12	1.94	0.48
7:K:15:DA:H2"	7:K:16:DG:C8	2.47	0.48
3:C:8:TYR:HE2	4:F:126:GLY:HA3	1.79	0.48
4:D:337:GLY:HA3	4:E:126:GLY:HA2	1.94	0.48
2:B:318:TRP:HD1	2:B:320:PHE:H	1.61	0.48
5:H:127:ILE:O	5:H:131:ILE:HG12	2.14	0.48
1:A:21:G:OP1	4:E:48:GLN:HG3	2.13	0.48
1:A:26:U:O4'	6:I:141:GLY:HA3	2.13	0.48
4:E:39:HIS:CD2	4:E:40:THR:HG23	2.49	0.48
3:C:264:LEU:O	3:C:267:ILE:HG12	2.13	0.48
4:F:64:ASP:HB3	4:F:66:LYS:NZ	2.28	0.48
2:B:447:TRP:CE2	2:B:748:LEU:HB2	2.48	0.47
3:C:71:PHE:HB2	3:C:81:LEU:HD22	1.96	0.47
2:B:446:GLN:HB3	2:B:745:VAL:HG22	1.96	0.47
2:B:394:HIS:NE2	2:B:505:ILE:HA	2.30	0.47
4:E:320:LYS:O	4:E:324:ASN:HB2	2.15	0.47
5:H:15:PHE:HB2	5:H:146:PHE:CE2	2.50	0.47
4:D:142:PHE:O	4:D:142:PHE:CG	2.66	0.47
4:F:264:ARG:HB2	4:F:280:TRP:CZ2	2.50	0.47
5:G:149:ALA:HA	5:H:60:SER:HA	1.97	0.47
2:B:427:VAL:HG12	2:B:448:LEU:HD11	1.96	0.47
2:B:846:LEU:HD22	2:B:859:ALA:HB1	1.96	0.47
5:H:15:PHE:HB2	5:H:146:PHE:HE2	1.80	0.47
6:I:7:VAL:HG12	6:I:7:VAL:O	2.15	0.47
2:B:551:LEU:HD23	2:B:552:ASP:N	2.30	0.46
4:E:238:SER:O	4:E:242:ARG:HB2	2.15	0.46
2:B:103:ILE:HA	2:B:143:TYR:O	2.15	0.46
4:E:132:LEU:HD22	4:E:144:PHE:HB3	1.96	0.46
4:F:231:PHE:CD1	4:F:239:ILE:HD12	2.51	0.46
5:H:16:LYS:HZ2	5:H:16:LYS:C	2.23	0.46
6:I:24:LYS:O	6:I:26:GLU:HG3	2.16	0.46
3:C:325:LEU:HD23	3:C:325:LEU:HA	1.82	0.46
6:I:144:LYS:NZ	6:I:231:PHE:HB3	2.30	0.46
4:E:315:ILE:O	4:E:319:LEU:HD12	2.16	0.46
5:H:97:TRP:CG	5:H:139:ILE:HD12	2.50	0.46
1:A:21:G:N2	4:D:274:VAL:HG11	2.30	0.46
2:B:499:CYS:HB3	2:B:501:GLU:CD	2.41	0.46
6:I:187:GLU:HA	6:I:191:LEU:HD23	1.98	0.46
4:E:131:LEU:HB2	4:E:292:TYR:CD1	2.50	0.46
4:E:329:GLN:HG3	4:E:334:GLU:HG3	1.98	0.46
4:F:207:LEU:HD12	4:F:207:LEU:H	1.80	0.46

*Continued on next page...*

*Continued from previous page...*

Atom-1	Atom-2	Interatomic distance (Å)	Clash overlap (Å)
2:B:701:ALA:HA	2:B:828:LEU:O	2.16	0.45
3:C:229:LYS:HA	3:C:232:ASP:OD2	2.16	0.45
6:I:14:GLU:HA	6:I:17:ASN:ND2	2.31	0.45
6:I:89:TYR:HE2	6:I:246:PHE:CE1	2.34	0.45
4:D:153:ARG:HA	4:D:153:ARG:HD3	1.76	0.45
4:F:328:LEU:HD12	4:F:343:VAL:HG21	1.98	0.45
6:I:22:PHE:CZ	6:I:29:ILE:HB	2.51	0.45
4:D:45:ILE:HG13	4:D:291:MET:HE1	1.99	0.45
3:C:228:LYS:HA	3:C:228:LYS:HD3	1.71	0.45
3:C:34:GLN:HB3	3:C:333:TYR:OH	2.17	0.45
4:D:204:ASP:O	5:G:6:ILE:HG12	2.17	0.45
2:B:394:HIS:CD2	2:B:505:ILE:HG23	2.52	0.45
4:D:148:PRO:HA	4:D:151:ILE:HD12	1.99	0.45
4:D:319:LEU:HA	4:D:319:LEU:HD23	1.77	0.45
2:B:197:LEU:HD21	2:B:213:PHE:HE2	1.81	0.45
5:H:118:LEU:HD12	5:H:118:LEU:HA	1.77	0.45
2:B:447:TRP:CZ3	2:B:747:ARG:HA	2.52	0.45
4:F:155:LYS:HZ2	4:F:155:LYS:C	2.25	0.44
2:B:366:PHE:CE2	2:B:395:LYS:HB2	2.51	0.44
3:C:156:GLY:HA3	3:C:171:TYR:CZ	2.53	0.44
3:C:68:LEU:HA	3:C:324:LYS:NZ	2.32	0.44
5:G:6:ILE:HG12	5:G:6:ILE:H	1.65	0.44
3:C:66:GLU:HB3	3:C:189:GLU:HB2	2.00	0.44
4:D:7:LYS:HD2	4:D:7:LYS:HA	1.70	0.44
4:D:336:VAL:HG23	4:D:338:LYS:HG2	1.99	0.44
2:B:347:LEU:HB3	2:B:351:ARG:HH12	1.82	0.44
3:C:36:LEU:HD23	3:C:186:VAL:HG22	1.98	0.44
2:B:161:LEU:HD12	2:B:161:LEU:HA	1.80	0.44
2:B:256:PRO:HG2	2:B:401:ARG:HH21	1.83	0.44
3:C:66:GLU:OE2	3:C:330:LYS:HA	2.18	0.44
6:I:234:GLN:HE21	6:I:234:GLN:HB2	1.61	0.44
2:B:519:LYS:HA	2:B:519:LYS:HD2	1.82	0.43
4:D:139:LYS:HG3	4:D:140:GLY:N	2.32	0.43
5:G:46:ILE:HD13	5:G:51:LEU:HA	2.00	0.43
2:B:818:LEU:HD23	2:B:818:LEU:HA	1.83	0.43
4:D:317:ASN:O	4:D:321:VAL:HG12	2.18	0.43
4:E:13:LEU:HB2	4:E:291:MET:HB2	2.00	0.43
2:B:394:HIS:HD2	2:B:505:ILE:HG23	1.83	0.43
3:C:68:LEU:HD12	3:C:187:TRP:CE2	2.53	0.43
4:F:9:VAL:HG22	4:F:295:ILE:HB	2.01	0.43
1:A:18:G:O6	7:K:23:DA:N6	2.51	0.43

*Continued on next page...*

*Continued from previous page...*

Atom-1	Atom-2	Interatomic distance (Å)	Clash overlap (Å)
2:B:390:LYS:HA	2:B:390:LYS:HD2	1.87	0.43
2:B:701:ALA:HB1	2:B:827:LEU:HD11	1.99	0.43
5:G:64:LYS:HA	5:G:64:LYS:HD3	1.83	0.43
1:A:2:U:C5	3:C:39:ALA:HA	2.52	0.43
4:D:202:LEU:HD23	4:D:202:LEU:HA	1.82	0.43
5:H:43:PRO:HG3	5:H:140:LEU:HB3	2.01	0.43
3:C:154:ARG:HD2	3:C:175:MET:SD	2.59	0.43
4:F:158:PHE:CE1	4:F:226:LEU:HD21	2.54	0.43
2:B:196:LYS:HE2	2:B:196:LYS:HB2	1.82	0.43
2:B:721:THR:HA	2:B:746:ARG:HA	2.00	0.43
2:B:889:LEU:HD13	2:B:889:LEU:HA	1.87	0.43
6:I:11:VAL:HG11	6:I:15:LEU:HD23	2.00	0.43
1:A:12:U:H1'	4:D:116:ALA:CB	2.48	0.43
4:F:325:ASN:ND2	4:F:344:ARG:HE	2.16	0.43
4:E:134:PRO:HB3	4:E:142:PHE:HE1	1.84	0.42
5:H:127:ILE:H	5:H:127:ILE:HD12	1.84	0.42
6:I:22:PHE:HD1	6:I:27:LEU:HB2	1.84	0.42
6:I:260:LEU:HD12	6:I:260:LEU:HA	1.85	0.42
2:B:270:LEU:HD12	2:B:270:LEU:HA	1.83	0.42
6:I:240:VAL:HG13	6:I:301:VAL:HG13	2.02	0.42
5:G:147:ALA:O	5:G:151:LEU:HB2	2.20	0.42
2:B:723:GLU:HG3	2:B:743:LYS:NZ	2.34	0.42
2:B:981:ILE:O	2:B:985:VAL:HG12	2.19	0.42
3:C:1:MET:HE3	3:C:3:LEU:HD21	2.01	0.42
2:B:440:ILE:H	2:B:440:ILE:HG12	1.62	0.42
4:F:329:GLN:HE21	4:F:334:GLU:HB2	1.85	0.42
5:H:151:LEU:HD23	5:H:151:LEU:HA	1.77	0.42
2:B:920:TYR:CD2	2:B:921:GLU:HG2	2.55	0.42
3:C:276:ASN:HB2	3:C:309:PHE:HB2	2.01	0.42
4:D:151:ILE:H	4:D:151:ILE:HG13	1.58	0.42
5:G:98:LEU:HD23	5:G:98:LEU:HA	1.72	0.42
5:G:140:LEU:HA	5:G:140:LEU:HD23	1.78	0.42
5:H:5:GLU:CD	5:H:5:GLU:H	2.27	0.42
5:H:94:LEU:HD12	5:H:94:LEU:HA	1.71	0.42
2:B:702:ILE:HG22	2:B:843:THR:HG21	2.02	0.42
6:I:22:PHE:CD1	6:I:29:ILE:HG12	2.54	0.41
6:I:134:ILE:HD13	6:I:134:ILE:HA	1.84	0.41
2:B:84:ARG:CZ	2:B:84:ARG:HA	2.50	0.41
2:B:510:ARG:HG3	2:B:514:GLU:CD	2.45	0.41
2:B:411:ILE:HD12	2:B:470:TYR:CE1	2.55	0.41
4:E:221:GLU:HA	4:E:224:LYS:HD2	2.01	0.41

*Continued on next page...*



Continued from previous page...

Atom-1	Atom-2	Interatomic distance (Å)	Clash overlap (Å)
2:B:33:LYS:HE3	2:B:33:LYS:HB3	1.87	0.41
4:F:336:VAL:HG23	4:F:338:LYS:HG2	2.02	0.41
2:B:448:LEU:HD23	2:B:448:LEU:HA	1.83	0.41
3:C:287:GLY:HA3	3:C:296:LYS:HZ3	1.85	0.41
4:E:31:ASP:O	4:E:32:LEU:HD23	2.21	0.41
6:I:38:LYS:HA	6:I:38:LYS:HD3	1.88	0.41
2:B:84:ARG:HA	2:B:84:ARG:NE	2.35	0.41
2:B:226:THR:HG23	2:B:228:PHE:H	1.85	0.41
5:G:49:ASN:OD1	6:I:118:VAL:HG23	2.20	0.41
2:B:226:THR:HG23	2:B:228:PHE:N	2.36	0.41
3:C:5:MET:HE1	3:C:202:VAL:HG11	2.02	0.41
2:B:277:LEU:HA	2:B:277:LEU:HD23	1.74	0.41
2:B:368:LYS:HE2	2:B:368:LYS:HB2	1.83	0.41
3:C:65:PHE:CD2	3:C:192:VAL:HG11	2.56	0.41
4:E:285:LEU:HD12	4:E:285:LEU:HA	1.85	0.41
2:B:117:ILE:HD11	2:B:128:TYR:OH	2.21	0.41
2:B:297:VAL:HB	2:B:302:LEU:HD11	2.03	0.41
5:G:69:VAL:HG11	5:G:118:LEU:HD23	2.02	0.40
5:G:111:LEU:HD23	5:G:111:LEU:HA	1.78	0.40
5:H:61:LYS:HD2	5:H:61:LYS:HA	1.69	0.40
4:E:256:ARG:HD3	4:E:256:ARG:HA	1.61	0.40
1:A:8:G:O4'	4:F:52:GLY:HA3	2.22	0.40
3:C:227:TRP:CH2	3:C:338:MET:HE3	2.55	0.40
2:B:192:PHE:O	2:B:195:GLU:HG3	2.21	0.40
2:B:857:ALA:HB2	2:B:947:ARG:NH1	2.36	0.40
4:D:27:LEU:HD12	4:D:28:SER:HB3	2.03	0.40
4:D:197:GLU:O	4:D:199:LYS:HG2	2.22	0.40
4:E:261:ILE:HD13	4:E:261:ILE:HA	1.79	0.40
2:B:466:LEU:HD23	2:B:466:LEU:HA	1.89	0.40

There are no symmetry-related clashes.

## 5.3 Torsion angles [i](#)

### 5.3.1 Protein backbone [i](#)

In the following table, the Percentiles column shows the percent Ramachandran outliers of the chain as a percentile score with respect to all PDB entries followed by that with respect to all EM entries.

The Analysed column shows the number of residues for which the backbone conformation was analysed, and the total number of residues.

Mol	Chain	Analysed	Favoured	Allowed	Outliers	Percentiles	
2	B	961/1024 (94%)	911 (95%)	50 (5%)	0	100	100
3	C	339/341 (99%)	313 (92%)	26 (8%)	0	100	100
4	D	340/355 (96%)	314 (92%)	26 (8%)	0	100	100
4	E	343/355 (97%)	321 (94%)	22 (6%)	0	100	100
4	F	334/355 (94%)	312 (93%)	22 (7%)	0	100	100
5	G	148/155 (96%)	146 (99%)	2 (1%)	0	100	100
5	H	147/155 (95%)	140 (95%)	7 (5%)	0	100	100
6	I	308/349 (88%)	282 (92%)	26 (8%)	0	100	100
All	All	2920/3089 (94%)	2739 (94%)	181 (6%)	0	100	100

There are no Ramachandran outliers to report.

### 5.3.2 Protein sidechains ⓘ

In the following table, the Percentiles column shows the percent sidechain outliers of the chain as a percentile score with respect to all PDB entries followed by that with respect to all EM entries.

The Analysed column shows the number of residues for which the sidechain conformation was analysed, and the total number of residues.

Mol	Chain	Analysed	Rotameric	Outliers	Percentiles	
2	B	567/902 (63%)	539 (95%)	28 (5%)	21	48
3	C	260/295 (88%)	251 (96%)	9 (4%)	31	56
4	D	197/308 (64%)	190 (96%)	7 (4%)	30	56
4	E	196/308 (64%)	189 (96%)	7 (4%)	30	56
4	F	214/308 (70%)	207 (97%)	7 (3%)	33	58
5	G	104/131 (79%)	94 (90%)	10 (10%)	7	24
5	H	88/131 (67%)	85 (97%)	3 (3%)	32	57
6	I	145/309 (47%)	140 (97%)	5 (3%)	32	57
All	All	1771/2692 (66%)	1695 (96%)	76 (4%)	27	50

All (76) residues with a non-rotameric sidechain are listed below:

Mol	Chain	Res	Type
2	B	29	PHE
2	B	39	HIS

*Continued on next page...*

*Continued from previous page...*

Mol	Chain	Res	Type
2	B	145	VAL
2	B	157	PHE
2	B	163	ARG
2	B	254	ILE
2	B	276	MET
2	B	285	ILE
2	B	330	SER
2	B	339	VAL
2	B	372	GLU
2	B	375	VAL
2	B	411	ILE
2	B	443	LYS
2	B	496	CYS
2	B	540	VAL
2	B	550	THR
2	B	561	VAL
2	B	713	LEU
2	B	750	THR
2	B	790	VAL
2	B	799	ASP
2	B	853	LEU
2	B	885	VAL
2	B	917	LEU
2	B	920	TYR
2	B	943	HIS
2	B	980	VAL
3	C	25	VAL
3	C	40	VAL
3	C	46	VAL
3	C	75	TYR
3	C	127	SER
3	C	130	ILE
3	C	148	ILE
3	C	188	VAL
3	C	278	ILE
4	D	56	SER
4	D	61	LEU
4	D	104	LEU
4	D	125	VAL
4	D	156	GLU
4	D	158	PHE
4	D	316	VAL

*Continued on next page...*

*Continued from previous page...*

Mol	Chain	Res	Type
4	E	11	PHE
4	E	152	GLN
4	E	186	THR
4	E	250	VAL
4	E	295	ILE
4	E	319	LEU
4	E	347	VAL
4	F	9	VAL
4	F	19	VAL
4	F	44	VAL
4	F	137	SER
4	F	141	VAL
4	F	207	LEU
4	F	294	LEU
5	G	3	ILE
5	G	6	ILE
5	G	8	GLN
5	G	21	ILE
5	G	66	ILE
5	G	89	PHE
5	G	96	THR
5	G	111	LEU
5	G	128	ASP
5	G	139	ILE
5	H	71	TYR
5	H	87	TYR
5	H	127	ILE
6	I	110	VAL
6	I	111	VAL
6	I	113	LEU
6	I	121	THR
6	I	298	THR

Sometimes sidechains can be flipped to improve hydrogen bonding and reduce clashes. All (6) such sidechains are listed below:

Mol	Chain	Res	Type
2	B	848	GLN
2	B	925	HIS
4	F	48	GLN
4	F	190	ASN
5	G	141	ASN
6	I	234	GLN

### 5.3.3 RNA ⓘ

Mol	Chain	Analysed	Backbone Outliers	Pucker Outliers
1	A	28/39 (71%)	9 (32%)	1 (3%)

All (9) RNA backbone outliers are listed below:

Mol	Chain	Res	Type
1	A	2	U
1	A	5	A
1	A	9	U
1	A	12	U
1	A	13	A
1	A	15	U
1	A	21	G
1	A	27	G
1	A	29	G

All (1) RNA pucker outliers are listed below:

Mol	Chain	Res	Type
1	A	4	G

## 5.4 Non-standard residues in protein, DNA, RNA chains ⓘ

There are no non-standard protein/DNA/RNA residues in this entry.

## 5.5 Carbohydrates ⓘ

There are no oligosaccharides in this entry.

## 5.6 Ligand geometry ⓘ

There are no ligands in this entry.

## 5.7 Other polymers ⓘ

There are no such residues in this entry.

## 5.8 Polymer linkage issues ⓘ

There are no chain breaks in this entry.

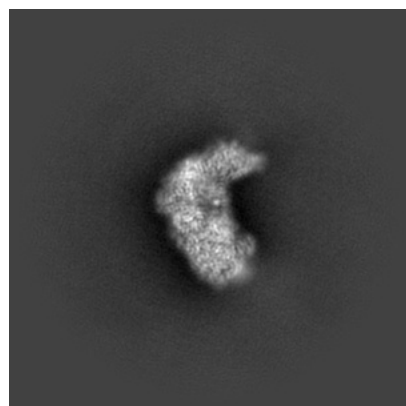
## 6 Map visualisation [i](#)

This section contains visualisations of the EMDB entry EMD-66472. These allow visual inspection of the internal detail of the map and identification of artifacts.

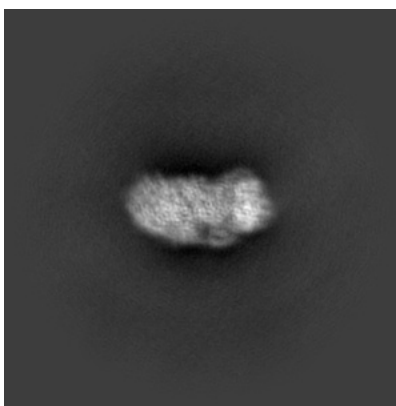
Images derived from a raw map, generated by summing the deposited half-maps, are presented below the corresponding image components of the primary map to allow further visual inspection and comparison with those of the primary map.

### 6.1 Orthogonal projections [i](#)

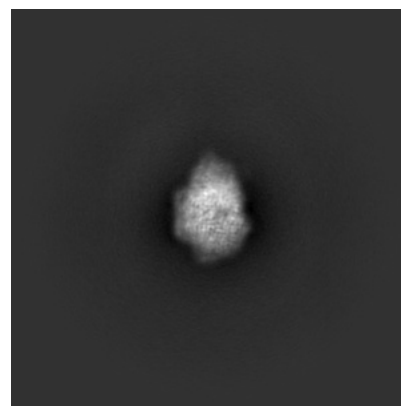
#### 6.1.1 Primary map



X

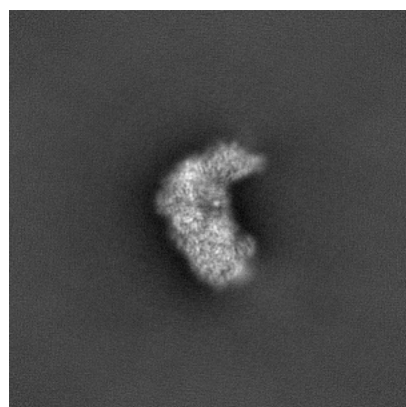


Y

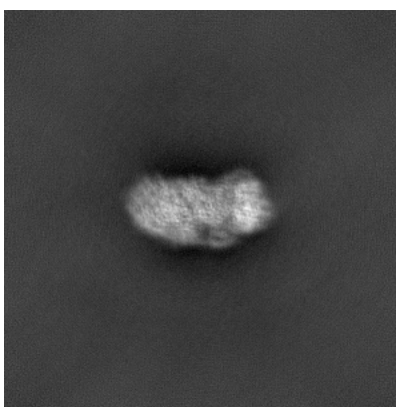


Z

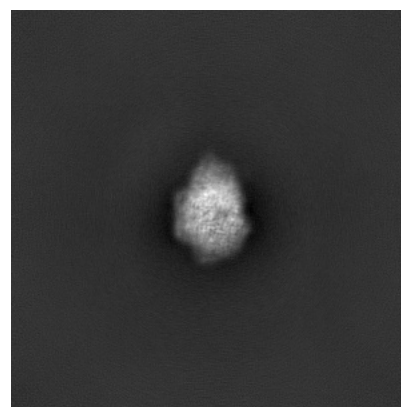
#### 6.1.2 Raw map



X



Y

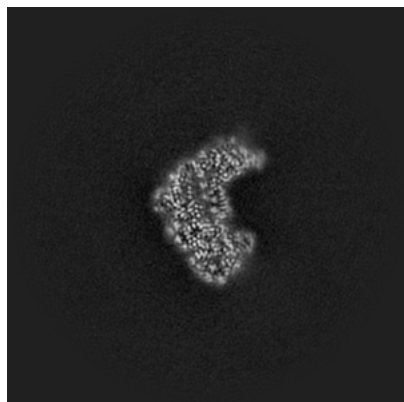


Z

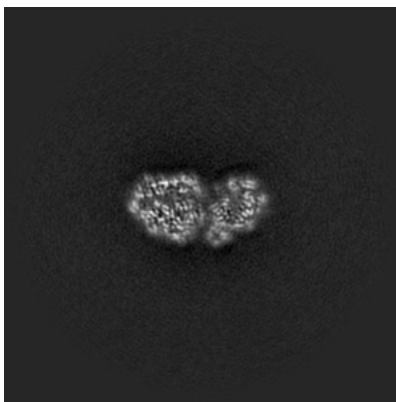
The images above show the map projected in three orthogonal directions.

## 6.2 Central slices [i](#)

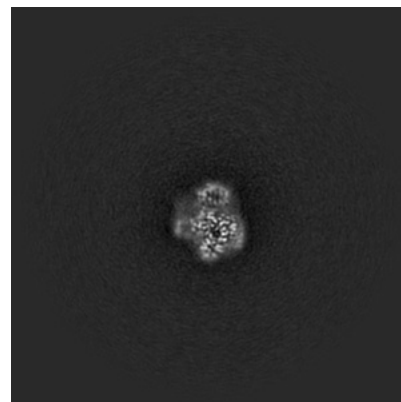
### 6.2.1 Primary map



X Index: 250

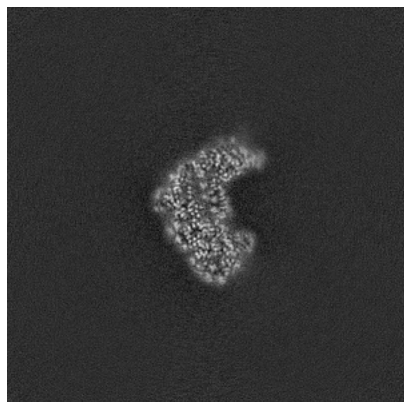


Y Index: 250

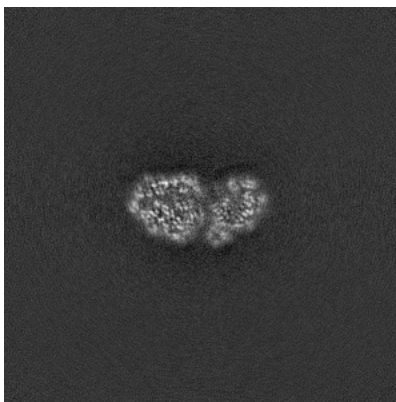


Z Index: 250

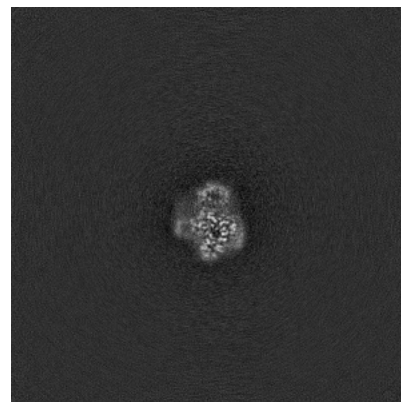
### 6.2.2 Raw map



X Index: 250



Y Index: 250



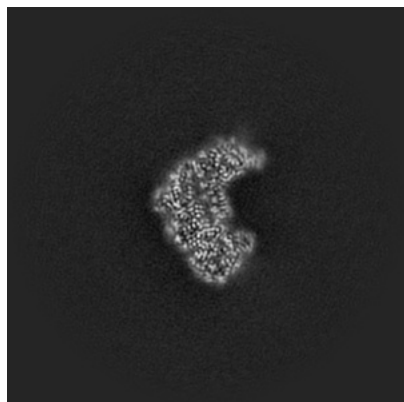
Z Index: 250

The images above show central slices of the map in three orthogonal directions.

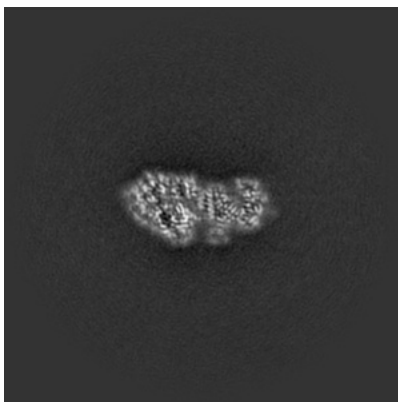


## 6.3 Largest variance slices [i](#)

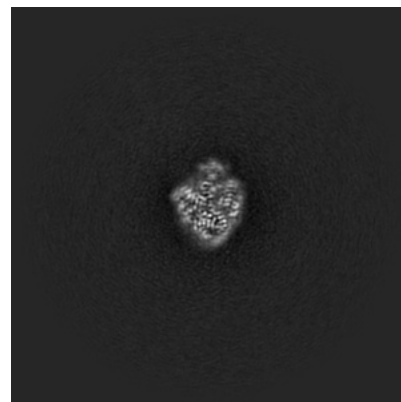
### 6.3.1 Primary map



X Index: 249

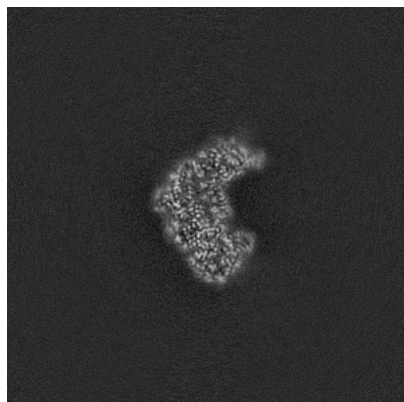


Y Index: 257

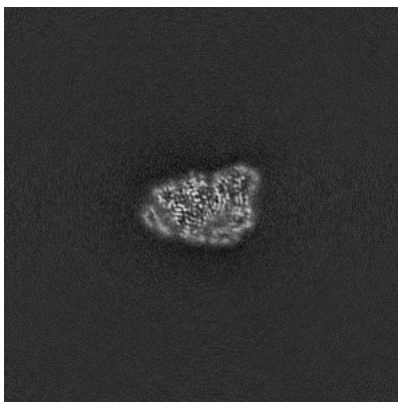


Z Index: 214

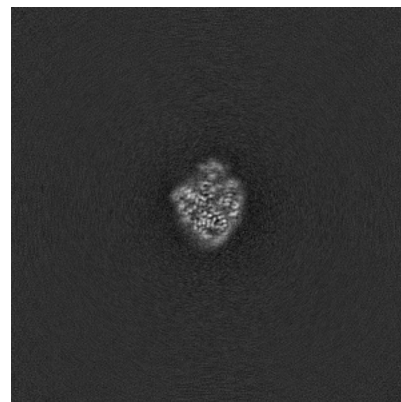
### 6.3.2 Raw map



X Index: 249



Y Index: 228

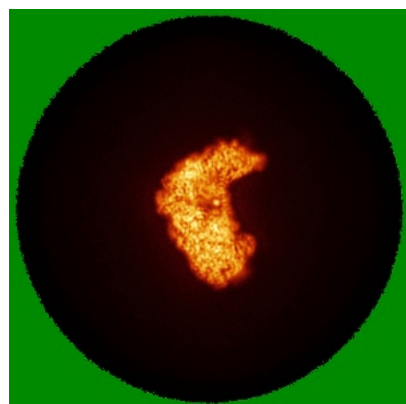


Z Index: 214

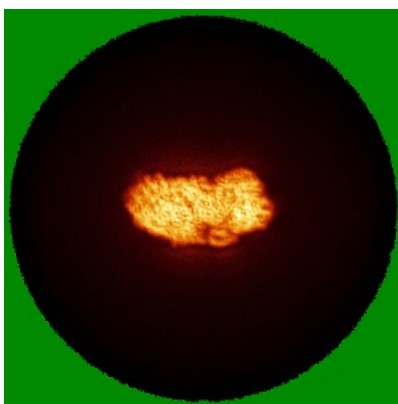
The images above show the largest variance slices of the map in three orthogonal directions.

## 6.4 Orthogonal standard-deviation projections (False-color) [i](#)

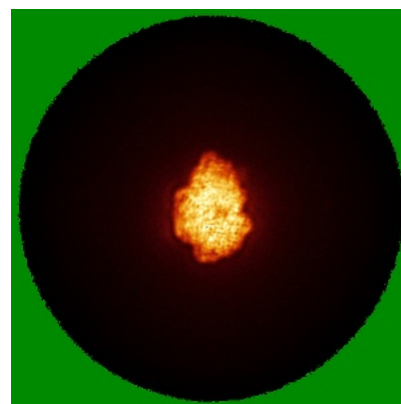
### 6.4.1 Primary map



X

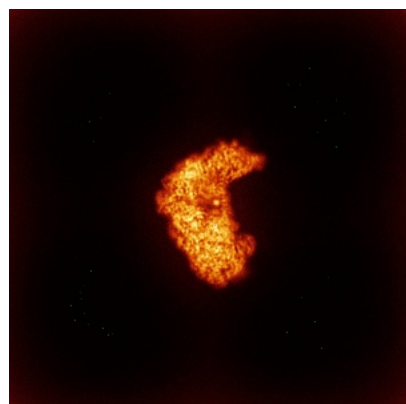


Y

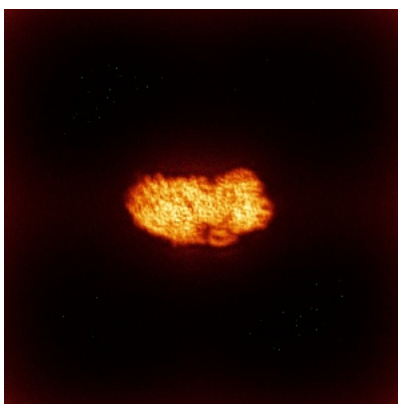


Z

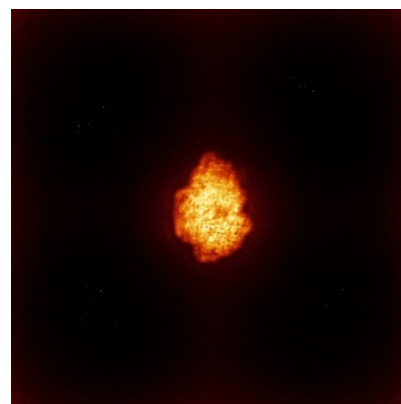
### 6.4.2 Raw map



X



Y

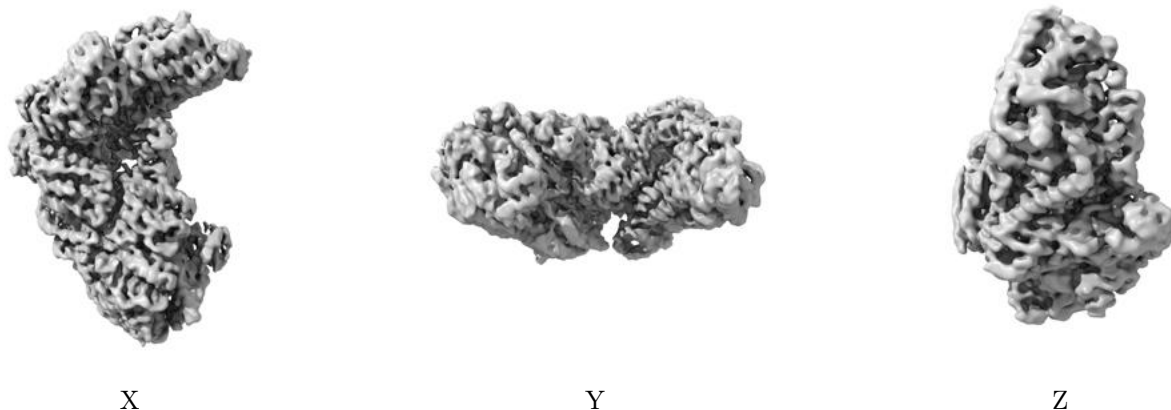


Z

The images above show the map standard deviation projections with false color in three orthogonal directions. Minimum values are shown in green, max in blue, and dark to light orange shades represent small to large values respectively.

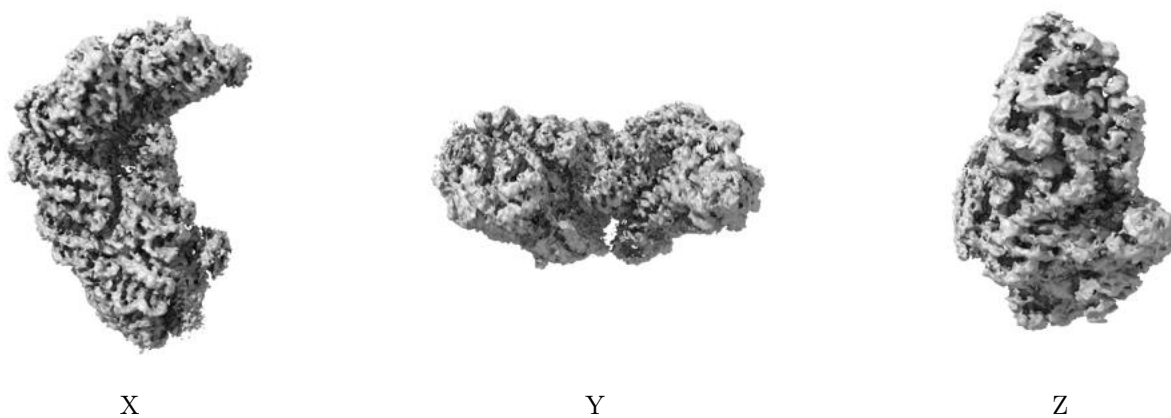
## 6.5 Orthogonal surface views [i](#)

### 6.5.1 Primary map



The images above show the 3D surface view of the map at the recommended contour level 0.27. These images, in conjunction with the slice images, may facilitate assessment of whether an appropriate contour level has been provided.

### 6.5.2 Raw map



These images show the 3D surface of the raw map. The raw map's contour level was selected so that its surface encloses the same volume as the primary map does at its recommended contour level.

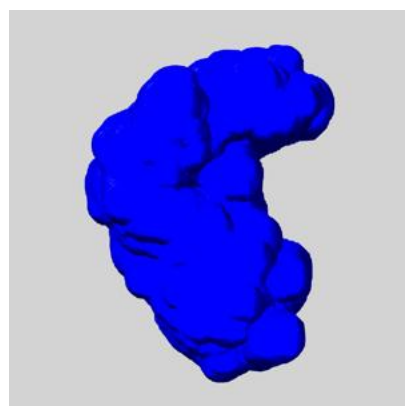
## 6.6 Mask visualisation [i](#)

This section shows the 3D surface view of the primary map at 50% transparency overlaid with the specified mask at 0% transparency

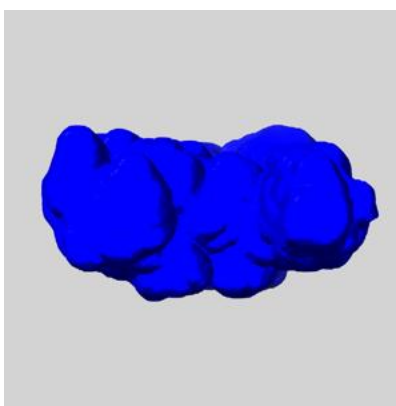
A mask typically either:

- Encompasses the whole structure
- Separates out a domain, a functional unit, a monomer or an area of interest from a larger structure

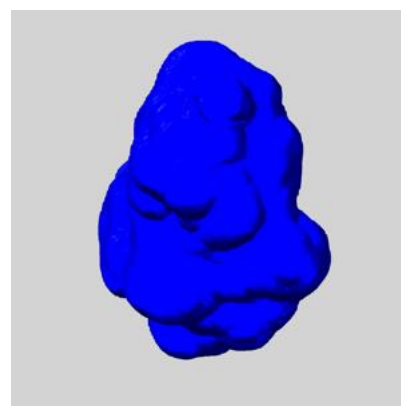
### 6.6.1 emd\_66472\_msk\_1.map [i](#)



X



Y

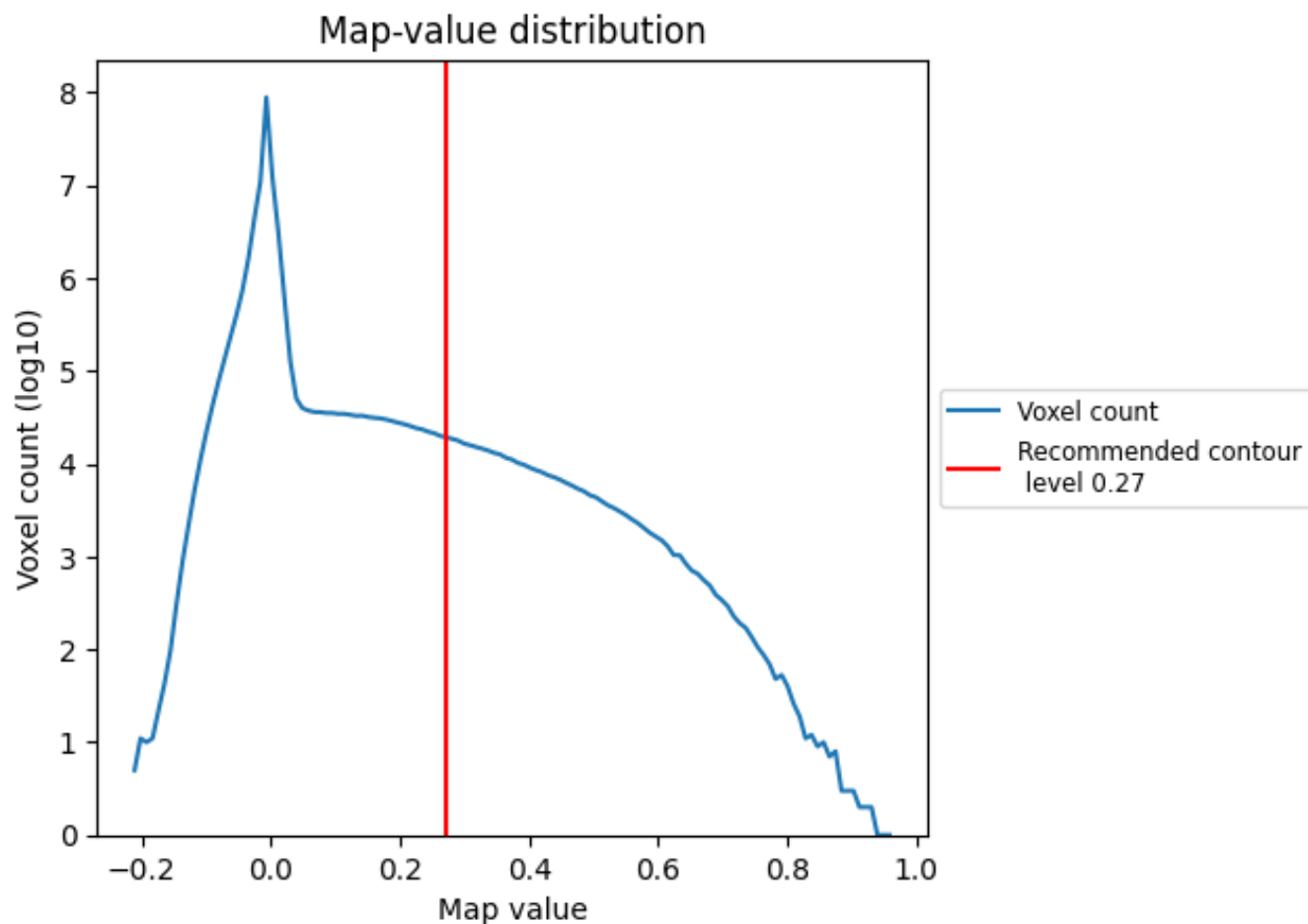


Z

## 7 Map analysis [i](#)

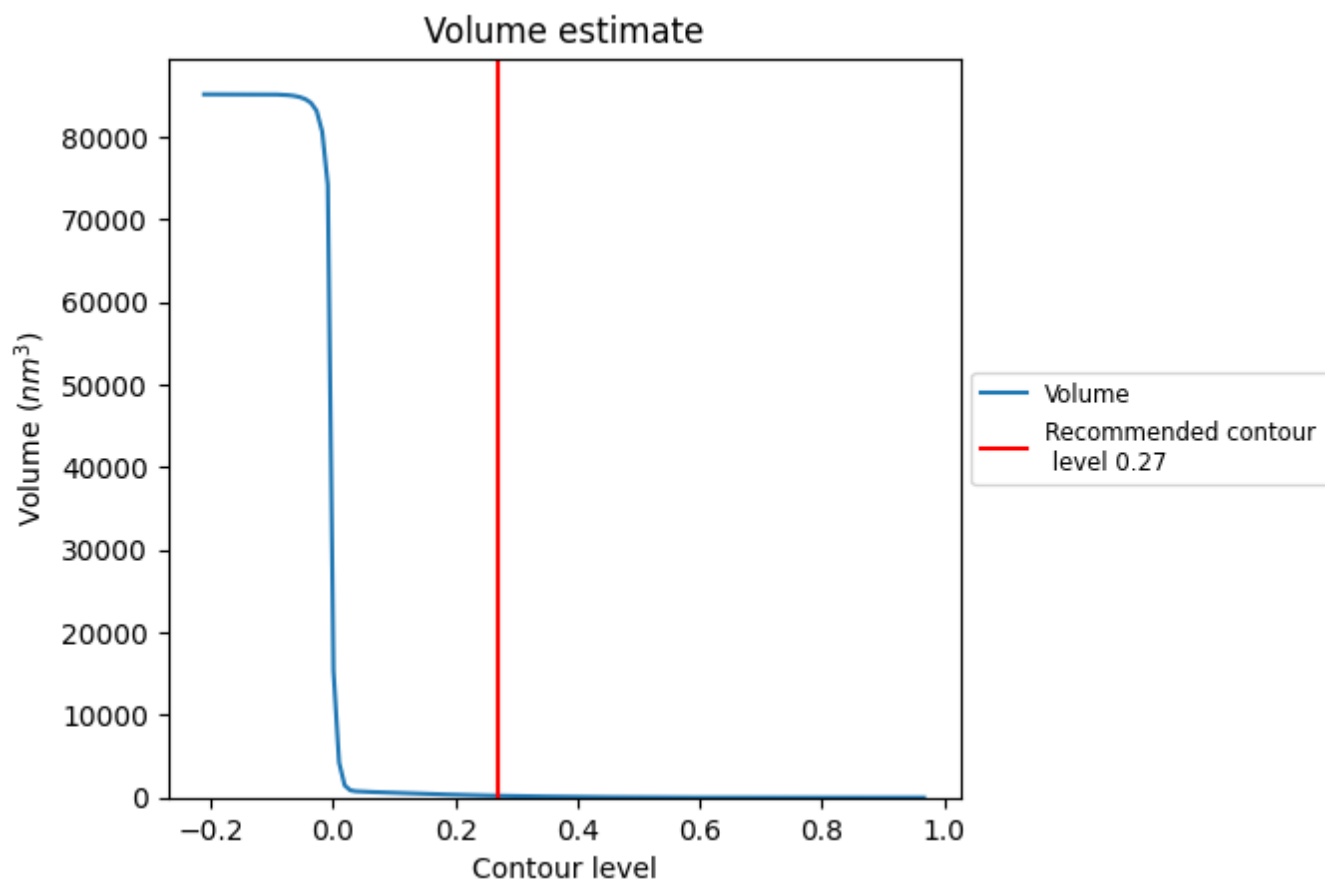
This section contains the results of statistical analysis of the map.

### 7.1 Map-value distribution [i](#)



The map-value distribution is plotted in 128 intervals along the x-axis. The y-axis is logarithmic. A spike in this graph at zero usually indicates that the volume has been masked.

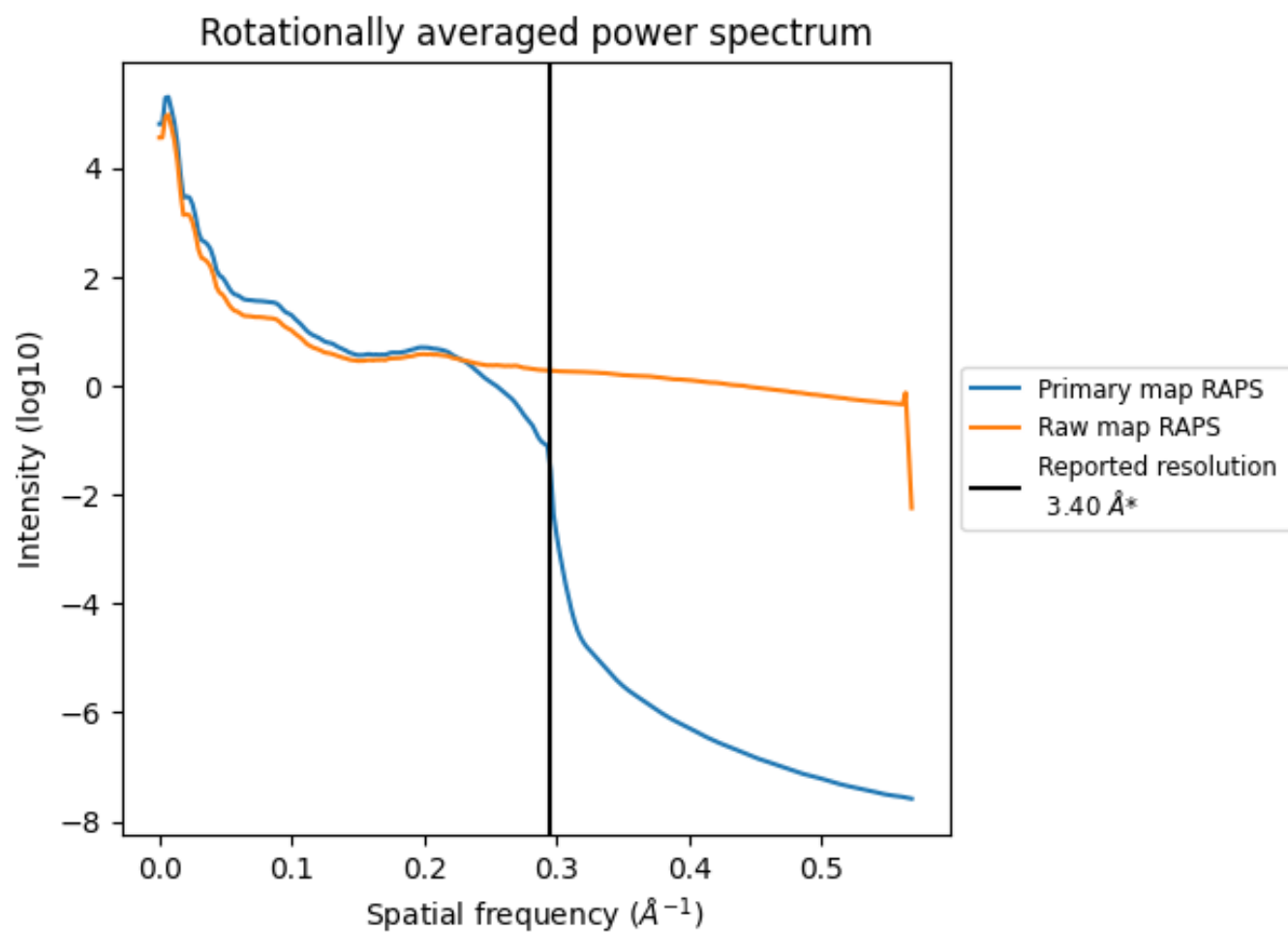
## 7.2 Volume estimate [i](#)



The volume at the recommended contour level is 218 nm<sup>3</sup>; this corresponds to an approximate mass of 197 kDa.

The volume estimate graph shows how the enclosed volume varies with the contour level. The recommended contour level is shown as a vertical line and the intersection between the line and the curve gives the volume of the enclosed surface at the given level.

### 7.3 Rotationally averaged power spectrum ⓘ

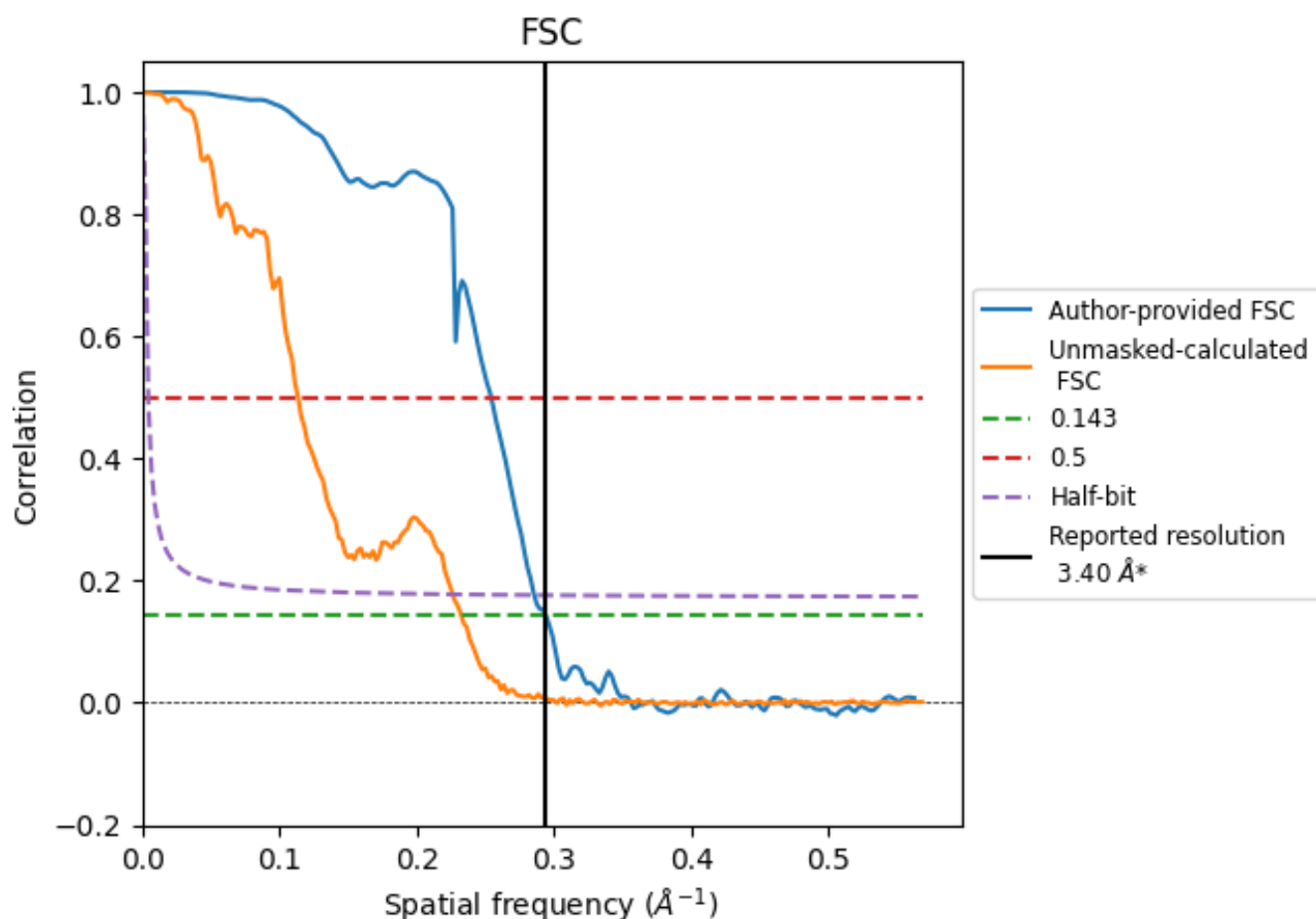


\*Reported resolution corresponds to spatial frequency of 0.294 Å<sup>-1</sup>

## 8 Fourier-Shell correlation [i](#)

Fourier-Shell Correlation (FSC) is the most commonly used method to estimate the resolution of single-particle and subtomogram-averaged maps. The shape of the curve depends on the imposed symmetry, mask and whether or not the two 3D reconstructions used were processed from a common reference. The reported resolution is shown as a black line. A curve is displayed for the half-bit criterion in addition to lines showing the 0.143 gold standard cut-off and 0.5 cut-off.

### 8.1 FSC [i](#)



\*Reported resolution corresponds to spatial frequency of 0.294  $\text{\AA}^{-1}$



## 8.2 Resolution estimates [i](#)

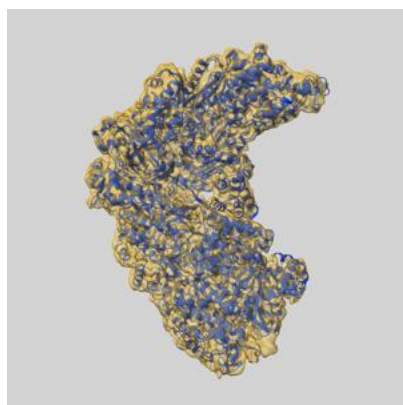
Resolution estimate (Å)	Estimation criterion (FSC cut-off)		
	0.143	0.5	Half-bit
Reported by author	3.40	-	-
Author-provided FSC curve	3.40	3.93	3.50
Unmasked-calculated*	4.30	8.80	4.42

\*Resolution estimate based on FSC curve calculated by comparison of deposited half-maps. The value from deposited half-maps intersecting FSC 0.143 CUT-OFF 4.30 differs from the reported value 3.4 by more than 10 %

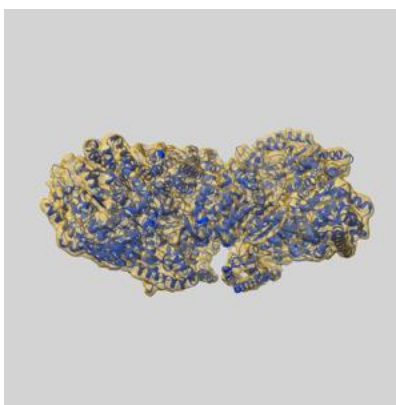
## 9 Map-model fit [i](#)

This section contains information regarding the fit between EMDB map EMD-66472 and PDB model 9X25. Per-residue inclusion information can be found in [section 3](#) on [page 6](#).

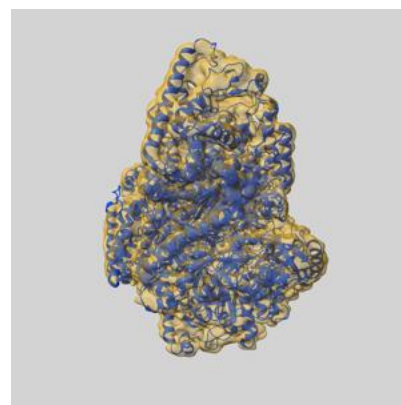
### 9.1 Map-model overlay [i](#)



X



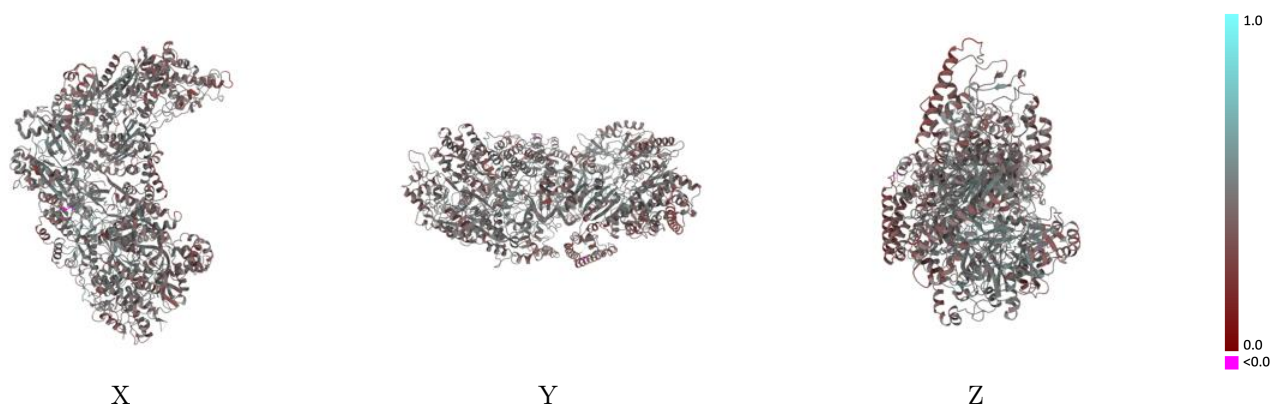
Y



Z

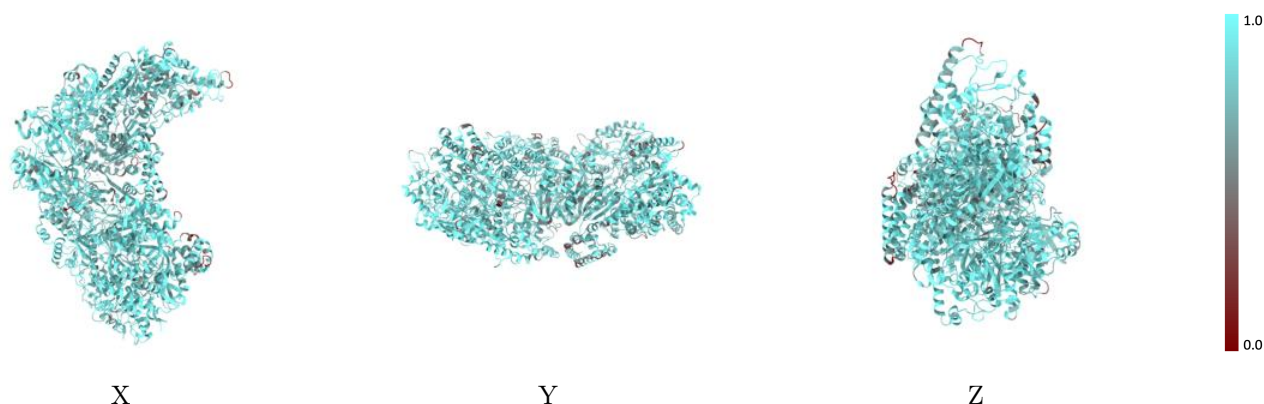
The images above show the 3D surface view of the map at the recommended contour level 0.27 at 50% transparency in yellow overlaid with a ribbon representation of the model coloured in blue. These images allow for the visual assessment of the quality of fit between the atomic model and the map.

## 9.2 Q-score mapped to coordinate model [i](#)



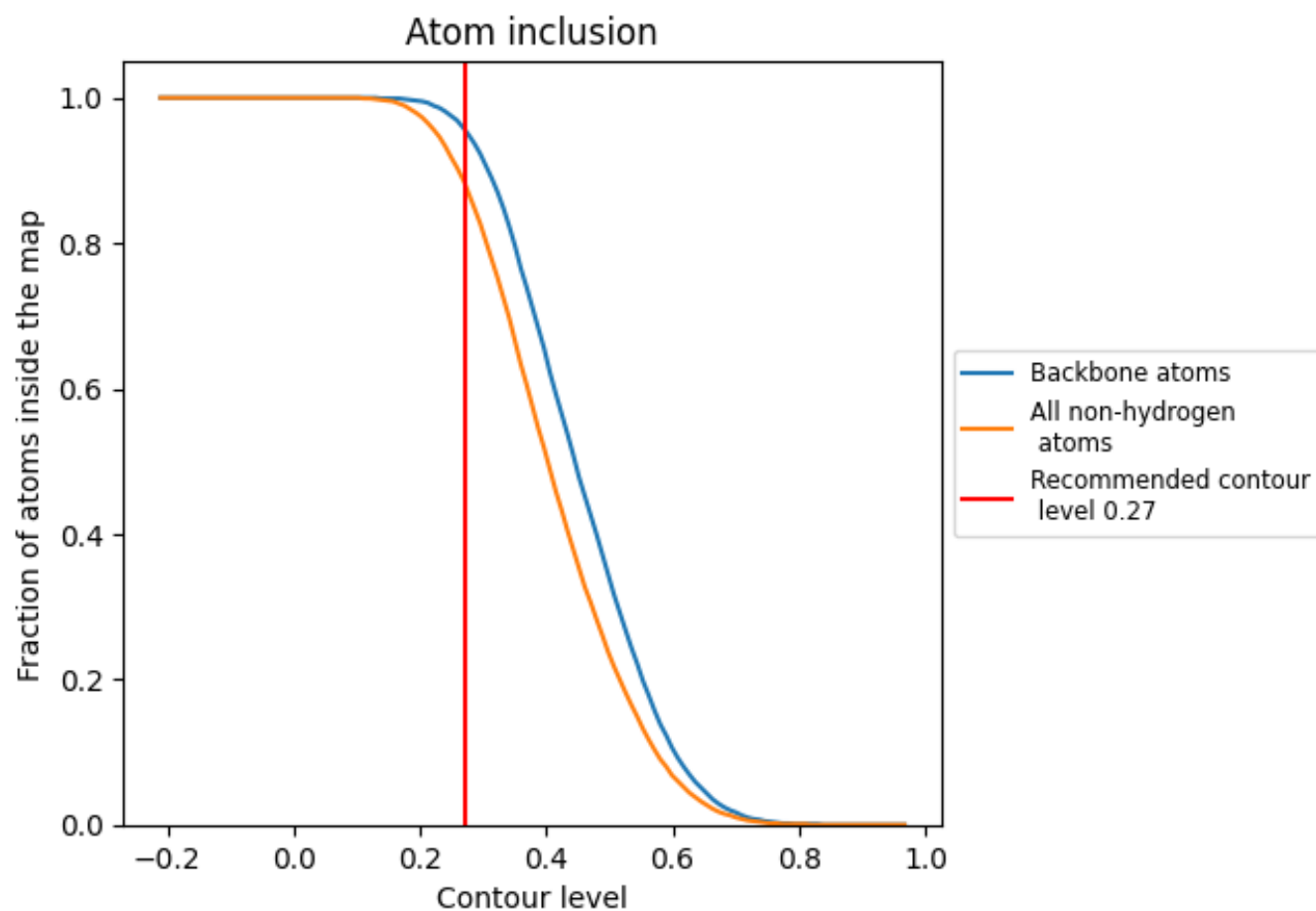
The images above show the model with each residue coloured according to its Q-score. This shows their resolvability in the map with higher Q-score values reflecting better resolvability. Please note: Q-score is calculating the resolvability of atoms, and thus high values are only expected at resolutions at which atoms can be resolved. Low Q-score values may therefore be expected for many entries.

## 9.3 Atom inclusion mapped to coordinate model [i](#)



The images above show the model with each residue coloured according to its atom inclusion. This shows to what extent they are inside the map at the recommended contour level (0.27).























## 9.4 Atom inclusion [i](#)



At the recommended contour level, 96% of all backbone atoms, 88% of all non-hydrogen atoms, are inside the map.

## 9.5 Map-model fit summary

The table lists the average atom inclusion at the recommended contour level (0.27) and Q-score for the entire model and for each chain.

Chain	Atom inclusion	Q-score
All	 0.8840	 0.4470
A	 0.9660	 0.4870
B	 0.8530	 0.4190
C	 0.8800	 0.4640
D	 0.9170	 0.4750
E	 0.9160	 0.4650
F	 0.8850	 0.4760
G	 0.8840	 0.4400
H	 0.9140	 0.4370
I	 0.8690	 0.4330
K	 0.9000	 0.4180

