



Full wwPDB X-ray Structure Validation Report ⓘ

Dec 8, 2025 – 02:51 PM JST

PDB ID : 9VWX / pdb_00009vwx
Title : Crystal structure of AetF-L183F/V220I/S523A in complex with FAD and L-tryptophan
Authors : Li, H.; Huang, J.-W.; Dai, L.; Chen, C.-C.; Guo, R.-T.
Deposited on : 2025-07-17
Resolution : 2.29 Å(reported)

This is a Full wwPDB X-ray Structure Validation Report for a publicly released PDB entry.

We welcome your comments at validation@mail.wwpdb.org

A user guide is available at

<https://www.wwpdb.org/validation/2017/XrayValidationReportHelp>

with specific help available everywhere you see the ⓘ symbol.

The types of validation reports are described at

<http://www.wwpdb.org/validation/2017/FAQs#types>.

The following versions of software and data (see [references ⓘ](#)) were used in the production of this report:

MolProbity : 4-5-2 with Phenix2.0
Mogul : 1.8.5 (274361), CSD as541be (2020)
Xtriage (Phenix) : 2.0
EDS : 3.0
buster-report : 1.1.7 (2018)
Percentile statistics : 20231227.v01 (using entries in the PDB archive December 27th 2023)
CCP4 : 9.0.010 (Gargrove)
Density-Fitness : 1.0.12
Ideal geometry (proteins) : Engh & Huber (2001)
Ideal geometry (DNA, RNA) : Parkinson et al. (1996)
Validation Pipeline (wwPDB-VP) : 2.47

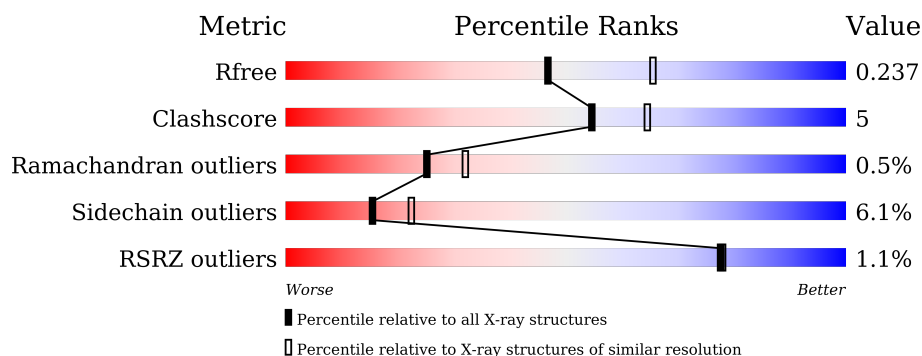
1 Overall quality at a glance

The following experimental techniques were used to determine the structure:

X-RAY DIFFRACTION

The reported resolution of this entry is 2.29 Å.

Percentile scores (ranging between 0-100) for global validation metrics of the entry are shown in the following graphic. The table shows the number of entries on which the scores are based.



Metric	Whole archive (#Entries)	Similar resolution (#Entries, resolution range(Å))
R_{free}	164625	5963 (2.30-2.30)
Clashscore	180529	6698 (2.30-2.30)
Ramachandran outliers	177936	6640 (2.30-2.30)
Sidechain outliers	177891	6640 (2.30-2.30)
RSRZ outliers	164620	5963 (2.30-2.30)

The table below summarises the geometric issues observed across the polymeric chains and their fit to the electron density. The red, orange, yellow and green segments of the lower bar indicate the fraction of residues that contain outliers for ≥ 3 , 2, 1 and 0 types of geometric quality criteria respectively. A grey segment represents the fraction of residues that are not modelled. The numeric value for each fraction is indicated below the corresponding segment, with a dot representing fractions $\leq 5\%$. The upper red bar (where present) indicates the fraction of residues that have poor fit to the electron density. The numeric value is given above the bar.

Mol	Chain	Length	Quality of chain
1	A	668	<div> <div></div> <div>78%</div> <div>14%</div> <div>• 6%</div> </div>

2 Entry composition [i](#)

There are 4 unique types of molecules in this entry. The entry contains 5426 atoms, of which 0 are hydrogens and 0 are deuteriums.

In the tables below, the ZeroOcc column contains the number of atoms modelled with zero occupancy, the AltConf column contains the number of residues with at least one atom in alternate conformation and the Trace column contains the number of residues modelled with at most 2 atoms.

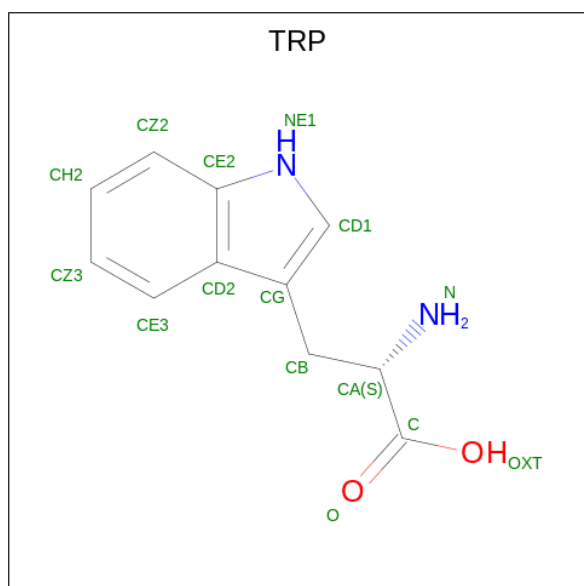
- Molecule 1 is a protein called AetF.

Mol	Chain	Residues	Atoms					ZeroOcc	AltConf	Trace
			Total	C	N	O	S			
1	A	627	5188	3337	875	961	15	0	0	0

There are 3 discrepancies between the modelled and reference sequences:

Chain	Residue	Modelled	Actual	Comment	Reference
A	183	PHE	LEU	engineered mutation	UNP A0A861B9Z9
A	220	ILE	VAL	engineered mutation	UNP A0A861B9Z9
A	523	ALA	SER	engineered mutation	UNP A0A861B9Z9

- Molecule 2 is TRYPTOPHAN (CCD ID: TRP) (formula: $C_{11}H_{12}N_2O_2$) (labeled as "Ligand of Interest" by depositor).



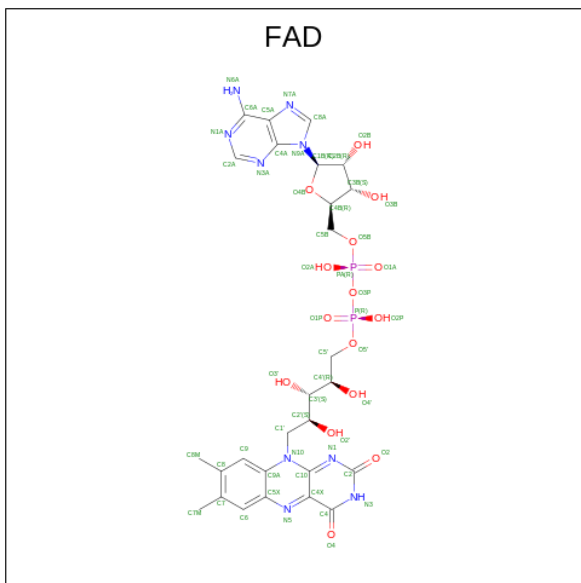
Mol	Chain	Residues	Atoms				ZeroOcc	AltConf
			Total	C	N	O		
2	A	1	15	11	2	2	0	0

Continued on next page...

Continued from previous page...

Mol	Chain	Residues	Atoms				ZeroOcc	AltConf
2	A	1	Total	C	N	O	0	0
			15	11	2	2		

- Molecule 3 is FLAVIN-ADENINE DINUCLEOTIDE (CCD ID: FAD) (formula: $\text{C}_{27}\text{H}_{33}\text{N}_9\text{O}_{15}\text{P}_2$) (labeled as "Ligand of Interest" by depositor).



Mol	Chain	Residues	Atoms					ZeroOcc	AltConf
3	A	1	Total 53	C 27	N 9	O 15	P 2	0	0

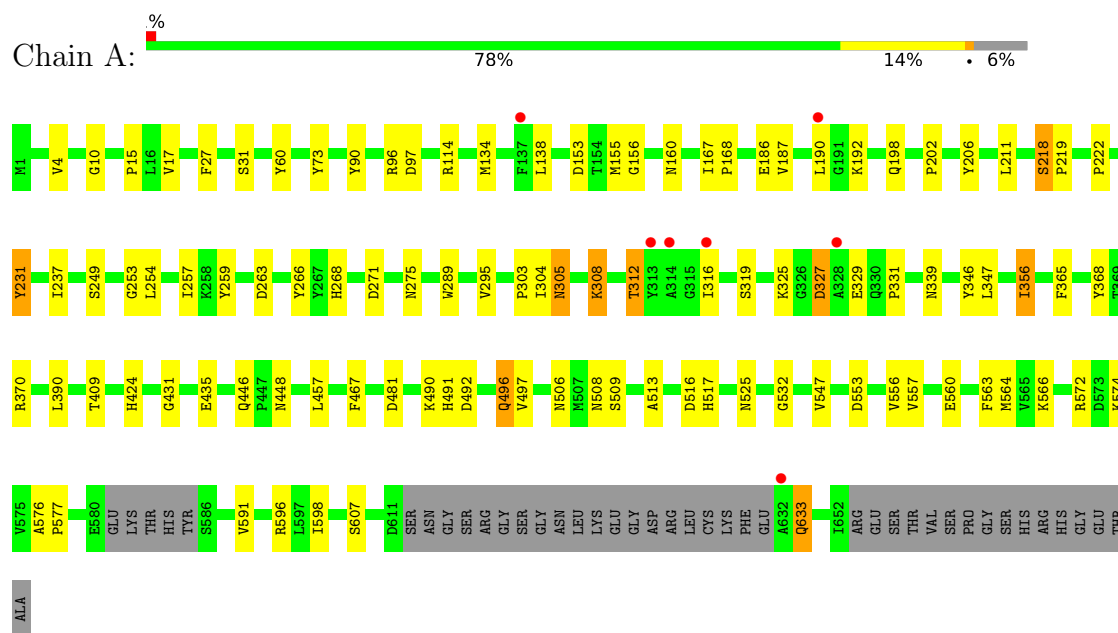
- Molecule 4 is water.

Mol	Chain	Residues	Atoms	ZeroOcc	AltConf
4	A	155	Total O 155 155	0	0

3 Residue-property plots [i](#)

These plots are drawn for all protein, RNA, DNA and oligosaccharide chains in the entry. The first graphic for a chain summarises the proportions of the various outlier classes displayed in the second graphic. The second graphic shows the sequence view annotated by issues in geometry and electron density. Residues are color-coded according to the number of geometric quality criteria for which they contain at least one outlier: green = 0, yellow = 1, orange = 2 and red = 3 or more. A red dot above a residue indicates a poor fit to the electron density ($RSRZ > 2$). Stretches of 2 or more consecutive residues without any outlier are shown as a green connector. Residues present in the sample, but not in the model, are shown in grey.

- Molecule 1: AetF



4 Data and refinement statistics

Property	Value	Source
Space group	P 21 21 21	Depositor
Cell constants a, b, c, α , β , γ	61.48Å 74.86Å 142.25Å 90.00° 90.00° 90.00°	Depositor
Resolution (Å)	24.42 – 2.29 24.42 – 2.29	Depositor EDS
% Data completeness (in resolution range)	98.1 (24.42-2.29) 98.5 (24.42-2.29)	Depositor EDS
R_{merge}	0.09	Depositor
R_{sym}	(Not available)	Depositor
$\langle I/\sigma(I) \rangle$ ¹	3.25 (at 2.28Å)	Xtriage
Refinement program	REFMAC 5.8.0238	Depositor
R, R_{free}	0.194 , 0.232 0.199 , 0.237	Depositor DCC
R_{free} test set	1489 reflections (4.88%)	wwPDB-VP
Wilson B-factor (Å ²)	40.6	Xtriage
Anisotropy	0.816	Xtriage
Bulk solvent k_{sol} (e/Å ³), B_{sol} (Å ²)	0.29 , 22.3	EDS
L-test for twinning ²	$\langle L \rangle = 0.49$, $\langle L^2 \rangle = 0.33$	Xtriage
Estimated twinning fraction	No twinning to report.	Xtriage
F_o, F_c correlation	0.96	EDS
Total number of atoms	5426	wwPDB-VP
Average B, all atoms (Å ²)	54.0	wwPDB-VP

Xtriage's analysis on translational NCS is as follows: *The largest off-origin peak in the Patterson function is 4.24% of the height of the origin peak. No significant pseudotranslation is detected.*

¹Intensities estimated from amplitudes.

²Theoretical values of $\langle |L| \rangle$, $\langle L^2 \rangle$ for acentric reflections are 0.5, 0.333 respectively for untwinned datasets, and 0.375, 0.2 for perfectly twinned datasets.

5 Model quality [i](#)

5.1 Standard geometry [i](#)

Bond lengths and bond angles in the following residue types are not validated in this section: FAD

The Z score for a bond length (or angle) is the number of standard deviations the observed value is removed from the expected value. A bond length (or angle) with $|Z| > 5$ is considered an outlier worth inspection. RMSZ is the root-mean-square of all Z scores of the bond lengths (or angles).

Mol	Chain	Bond lengths		Bond angles	
		RMSZ	$\# Z > 5$	RMSZ	$\# Z > 5$
1	A	1.02	0/5323	1.42	8/7211 (0.1%)

There are no bond length outliers.

All (8) bond angle outliers are listed below:

Mol	Chain	Res	Type	Atoms	Z	Observed(°)	Ideal(°)
1	A	73	TYR	CB-CA-C	6.75	117.54	109.85
1	A	97	ASP	CA-CB-CG	6.54	119.14	112.60
1	A	312	THR	CB-CA-C	6.06	120.50	110.74
1	A	508	ASN	CA-C-N	5.27	127.66	120.54
1	A	508	ASN	C-N-CA	5.27	127.66	120.54
1	A	303	PRO	N-CA-C	5.13	118.56	110.50
1	A	516	ASP	CA-CB-CG	5.06	117.66	112.60
1	A	271	ASP	CA-CB-CG	5.01	117.61	112.60

There are no chirality outliers.

There are no planarity outliers.

5.2 Too-close contacts [i](#)

In the following table, the Non-H and H(model) columns list the number of non-hydrogen atoms and hydrogen atoms in the chain respectively. The H(added) column lists the number of hydrogen atoms added and optimized by MolProbity. The Clashes column lists the number of clashes within the asymmetric unit, whereas Symm-Clashes lists symmetry-related clashes.

Mol	Chain	Non-H	H(model)	H(added)	Clashes	Symm-Clashes
1	A	5188	0	5048	49	0
2	A	30	0	18	0	0
3	A	53	0	31	0	0

Continued on next page...

Continued from previous page...

Mol	Chain	Non-H	H(model)	H(added)	Clashes	Symm-Clashes
4	A	155	0	0	5	0
All	All	5426	0	5097	49	0

The all-atom clashscore is defined as the number of clashes found per 1000 atoms (including hydrogen atoms). The all-atom clashscore for this structure is 5.

All (49) close contacts within the same asymmetric unit are listed below, sorted by their clash magnitude.

Atom-1	Atom-2	Interatomic distance (Å)	Clash overlap (Å)
1:A:560:GLU:HA	4:A:806:HOH:O	1.63	0.98
1:A:446:GLN:HE21	1:A:448:ASN:HD21	1.34	0.75
1:A:633:GLN:HE21	1:A:633:GLN:HA	1.53	0.73
1:A:563:PHE:HD2	4:A:806:HOH:O	1.79	0.65
1:A:192:LYS:NZ	1:A:492:ASP:OD2	2.30	0.64
1:A:134:MET:HG3	1:A:327:ASP:HB3	1.82	0.61
1:A:513:ALA:O	1:A:517:HIS:HD2	1.86	0.58
1:A:633:GLN:HA	1:A:633:GLN:NE2	2.21	0.54
1:A:222:PRO:HA	1:A:231:TYR:CZ	2.42	0.54
1:A:305:ASN:HD21	1:A:308:LYS:HG3	1.72	0.54
1:A:365:PHE:HB3	1:A:368:TYR:CD2	2.43	0.54
1:A:253:GLY:HA2	1:A:424:HIS:O	2.08	0.54
1:A:560:GLU:O	1:A:564:MET:HG3	2.07	0.53
1:A:560:GLU:CA	4:A:806:HOH:O	2.37	0.53
1:A:572:ARG:HD2	1:A:572:ARG:C	2.35	0.52
1:A:329:GLU:OE2	1:A:370:ARG:HD2	2.08	0.52
1:A:491:HIS:O	1:A:496:GLN:NE2	2.39	0.52
1:A:633:GLN:HE21	1:A:633:GLN:CA	2.15	0.52
1:A:155:MET:HE3	1:A:160:ASN:HB2	1.93	0.51
1:A:553:ASP:HB3	1:A:556:VAL:HG23	1.91	0.50
1:A:259:TYR:OH	1:A:525:ASN:ND2	2.44	0.49
1:A:4:VAL:O	1:A:27:PHE:HA	2.13	0.49
1:A:114:ARG:HD3	4:A:917:HOH:O	2.12	0.49
1:A:198:GLN:HE22	1:A:491:HIS:CE1	2.31	0.49
1:A:365:PHE:HB3	1:A:368:TYR:HD2	1.77	0.48
1:A:576:ALA:N	1:A:577:PRO:CD	2.77	0.48
1:A:17:VAL:HG12	1:A:90:TYR:CZ	2.50	0.46
1:A:356:ILE:HD11	1:A:390:LEU:HD11	1.98	0.46
1:A:156:GLY:HA2	1:A:257:ILE:HD11	1.98	0.46
1:A:329:GLU:OE2	1:A:370:ARG:CD	2.64	0.46
1:A:186:GLU:OE1	1:A:268:HIS:NE2	2.49	0.45
1:A:467:PHE:CD1	1:A:467:PHE:C	2.95	0.45

Continued on next page...

Continued from previous page...

Atom-1	Atom-2	Interatomic distance (Å)	Clash overlap (Å)
1:A:202:PRO:HG2	1:A:431:GLY:HA3	1.99	0.45
1:A:339:ASN:O	1:A:339:ASN:ND2	2.50	0.45
1:A:331:PRO:HG2	1:A:346:TYR:CE2	2.53	0.44
1:A:17:VAL:HG12	1:A:90:TYR:CE1	2.54	0.42
1:A:190:LEU:HD11	1:A:591:VAL:HG23	2.01	0.42
1:A:576:ALA:N	1:A:577:PRO:HD2	2.35	0.42
1:A:167:ILE:N	1:A:168:PRO:CD	2.83	0.42
1:A:156:GLY:C	1:A:257:ILE:HD12	2.44	0.42
1:A:506:ASN:N	4:A:805:HOH:O	2.40	0.42
1:A:289:TRP:HB3	1:A:295:VAL:HG23	2.02	0.41
1:A:446:GLN:NE2	1:A:448:ASN:HD21	2.10	0.41
1:A:31:SER:O	1:A:96:ARG:HA	2.21	0.41
1:A:218:SER:N	1:A:219:PRO:CD	2.83	0.41
1:A:339:ASN:O	1:A:339:ASN:CG	2.63	0.41
1:A:206:TYR:OH	1:A:435:GLU:OE1	2.38	0.41
1:A:15:PRO:HG3	1:A:60:TYR:CE1	2.55	0.41
1:A:263:ASP:O	1:A:266:TYR:HB3	2.21	0.41

There are no symmetry-related clashes.

5.3 Torsion angles ⓘ

5.3.1 Protein backbone ⓘ

In the following table, the Percentiles column shows the percent Ramachandran outliers of the chain as a percentile score with respect to all X-ray entries followed by that with respect to entries of similar resolution.

The Analysed column shows the number of residues for which the backbone conformation was analysed, and the total number of residues.

Mol	Chain	Analysed	Favoured	Allowed	Outliers	Percentiles	
1	A	621/668 (93%)	593 (96%)	25 (4%)	3 (0%)	25	32

All (3) Ramachandran outliers are listed below:

Mol	Chain	Res	Type
1	A	481	ASP
1	A	532	GLY
1	A	10	GLY

5.3.2 Protein sidechains ⓘ

In the following table, the Percentiles column shows the percent sidechain outliers of the chain as a percentile score with respect to all X-ray entries followed by that with respect to entries of similar resolution.

The Analysed column shows the number of residues for which the sidechain conformation was analysed, and the total number of residues.

Mol	Chain	Analysed	Rotameric	Outliers	Percentiles	
1	A	568/602 (94%)	534 (94%)	34 (6%)	16	23

All (34) residues with a non-rotameric sidechain are listed below:

Mol	Chain	Res	Type
1	A	138	LEU
1	A	153	ASP
1	A	187	VAL
1	A	211	LEU
1	A	218	SER
1	A	231	TYR
1	A	237	ILE
1	A	249	SER
1	A	254	LEU
1	A	275	ASN
1	A	304	ILE
1	A	305	ASN
1	A	308	LYS
1	A	312	THR
1	A	316	ILE
1	A	319	SER
1	A	325	LYS
1	A	327	ASP
1	A	347	LEU
1	A	356	ILE
1	A	409	THR
1	A	457	LEU
1	A	490	LYS
1	A	496	GLN
1	A	497	VAL
1	A	509	SER
1	A	547	VAL
1	A	557	VAL
1	A	566	LYS
1	A	574	LYS

Continued on next page...

Continued from previous page...

Mol	Chain	Res	Type
1	A	596	ARG
1	A	598	ILE
1	A	607	SER
1	A	633	GLN

Sometimes sidechains can be flipped to improve hydrogen bonding and reduce clashes. All (12) such sidechains are listed below:

Mol	Chain	Res	Type
1	A	83	HIS
1	A	123	HIS
1	A	170	ASN
1	A	188	GLN
1	A	252	ASN
1	A	264	GLN
1	A	339	ASN
1	A	446	GLN
1	A	517	HIS
1	A	525	ASN
1	A	562	ASN
1	A	633	GLN

5.3.3 RNA [i](#)

There are no RNA molecules in this entry.

5.4 Non-standard residues in protein, DNA, RNA chains [i](#)

There are no non-standard protein/DNA/RNA residues in this entry.

5.5 Carbohydrates [i](#)

There are no oligosaccharides in this entry.

5.6 Ligand geometry [i](#)

3 ligands are modelled in this entry.

In the following table, the Counts columns list the number of bonds (or angles) for which Mogul statistics could be retrieved, the number of bonds (or angles) that are observed in the model and

the number of bonds (or angles) that are defined in the Chemical Component Dictionary. The Link column lists molecule types, if any, to which the group is linked. The Z score for a bond length (or angle) is the number of standard deviations the observed value is removed from the expected value. A bond length (or angle) with $|Z| > 2$ is considered an outlier worth inspection. RMSZ is the root-mean-square of all Z scores of the bond lengths (or angles).

Mol	Type	Chain	Res	Link	Bond lengths			Bond angles		
					Counts	RMSZ	# Z > 2	Counts	RMSZ	# Z > 2
3	FAD	A	703	-	53,58,58	0.62	0	68,89,89	0.95	6 (8%)
2	TRP	A	702	-	14,16,16	0.77	0	16,22,22	1.30	3 (18%)
2	TRP	A	701	-	14,16,16	0.77	0	16,22,22	1.57	2 (12%)

In the following table, the Chirals column lists the number of chiral outliers, the number of chiral centers analysed, the number of these observed in the model and the number defined in the Chemical Component Dictionary. Similar counts are reported in the Torsion and Rings columns. '-' means no outliers of that kind were identified.

Mol	Type	Chain	Res	Link	Chirals	Torsions	Rings
3	FAD	A	703	-	-	4/30/50/50	0/6/6/6
2	TRP	A	702	-	-	3/7/8/8	0/2/2/2
2	TRP	A	701	-	-	1/7/8/8	0/2/2/2

There are no bond length outliers.

All (11) bond angle outliers are listed below:

Mol	Chain	Res	Type	Atoms	Z	Observed(°)	Ideal(°)
2	A	701	TRP	OXT-C-O	-4.70	113.42	124.09
2	A	701	TRP	OXT-C-CA	3.00	123.61	113.38
2	A	702	TRP	OXT-C-CA	2.86	123.13	113.38
2	A	702	TRP	OXT-C-O	-2.69	117.98	124.09
3	A	703	FAD	O5'-P-O1P	-2.69	98.57	109.07
3	A	703	FAD	O2P-P-O1P	2.34	123.79	112.24
3	A	703	FAD	C5A-C6A-N6A	2.32	123.87	120.35
2	A	702	TRP	CH2-CZ2-CE2	-2.23	116.88	120.08
3	A	703	FAD	O4B-C1B-C2B	-2.14	103.80	106.93
3	A	703	FAD	O4-C4-C4X	-2.04	121.20	126.60
3	A	703	FAD	O3B-C3B-C2B	-2.01	105.30	111.82

There are no chirality outliers.

All (8) torsion outliers are listed below:

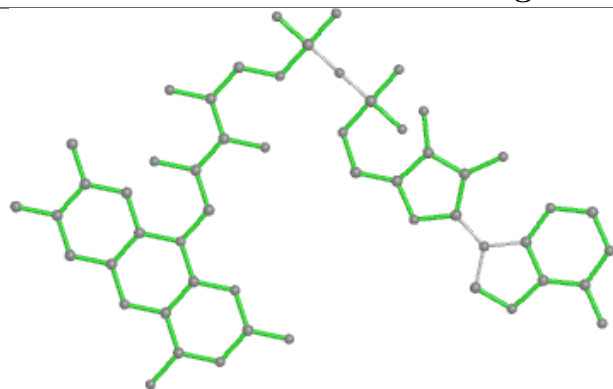
Mol	Chain	Res	Type	Atoms
2	A	702	TRP	O-C-CA-N
2	A	702	TRP	CA-CB-CG-CD1
3	A	703	FAD	N10-C1'-C2'-C3'
2	A	702	TRP	OXT-C-CA-N
3	A	703	FAD	O4B-C4B-C5B-O5B
2	A	701	TRP	CA-CB-CG-CD1
3	A	703	FAD	C2'-C3'-C4'-O4'
3	A	703	FAD	O3'-C3'-C4'-O4'

There are no ring outliers.

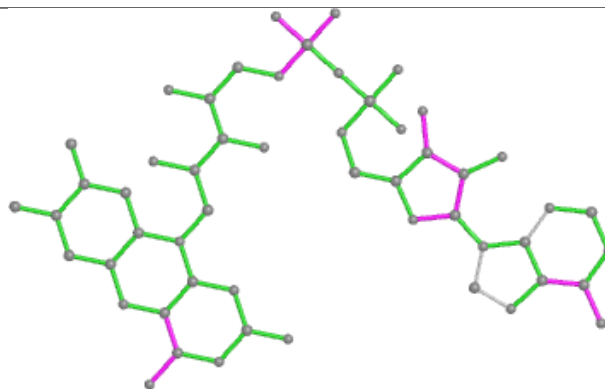
No monomer is involved in short contacts.

The following is a two-dimensional graphical depiction of Mogul quality analysis of bond lengths, bond angles, torsion angles, and ring geometry for all instances of the Ligand of Interest. In addition, ligands with molecular weight > 250 and outliers as shown on the validation Tables will also be included. For torsion angles, if less than 5% of the Mogul distribution of torsion angles is within 10 degrees of the torsion angle in question, then that torsion angle is considered an outlier. Any bond that is central to one or more torsion angles identified as an outlier by Mogul will be highlighted in the graph. For rings, the root-mean-square deviation (RMSD) between the ring in question and similar rings identified by Mogul is calculated over all ring torsion angles. If the average RMSD is greater than 60 degrees and the minimal RMSD between the ring in question and any Mogul-identified rings is also greater than 60 degrees, then that ring is considered an outlier. The outliers are highlighted in purple. The color gray indicates Mogul did not find sufficient equivalents in the CSD to analyse the geometry.

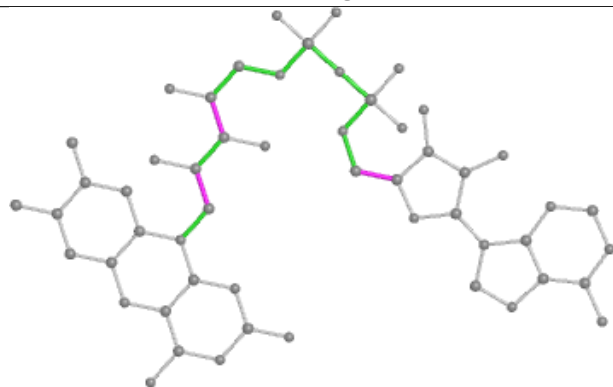
Ligand FAD A 703



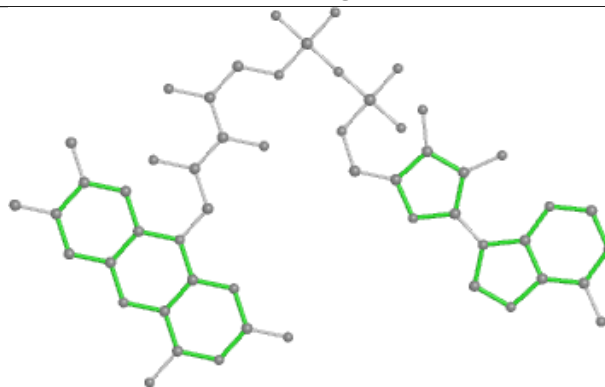
Bond lengths



Bond angles

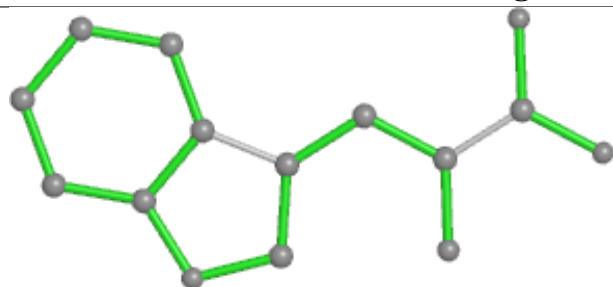


Torsions

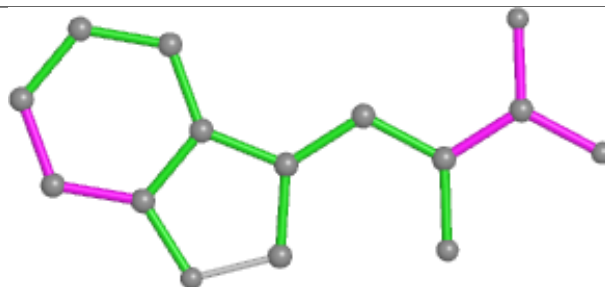


Rings

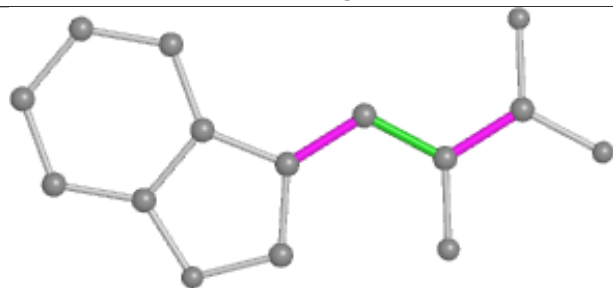
Ligand TRP A 702



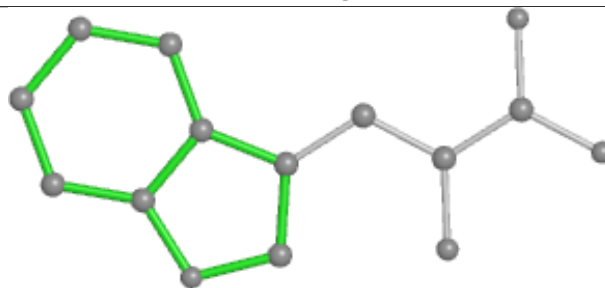
Bond lengths



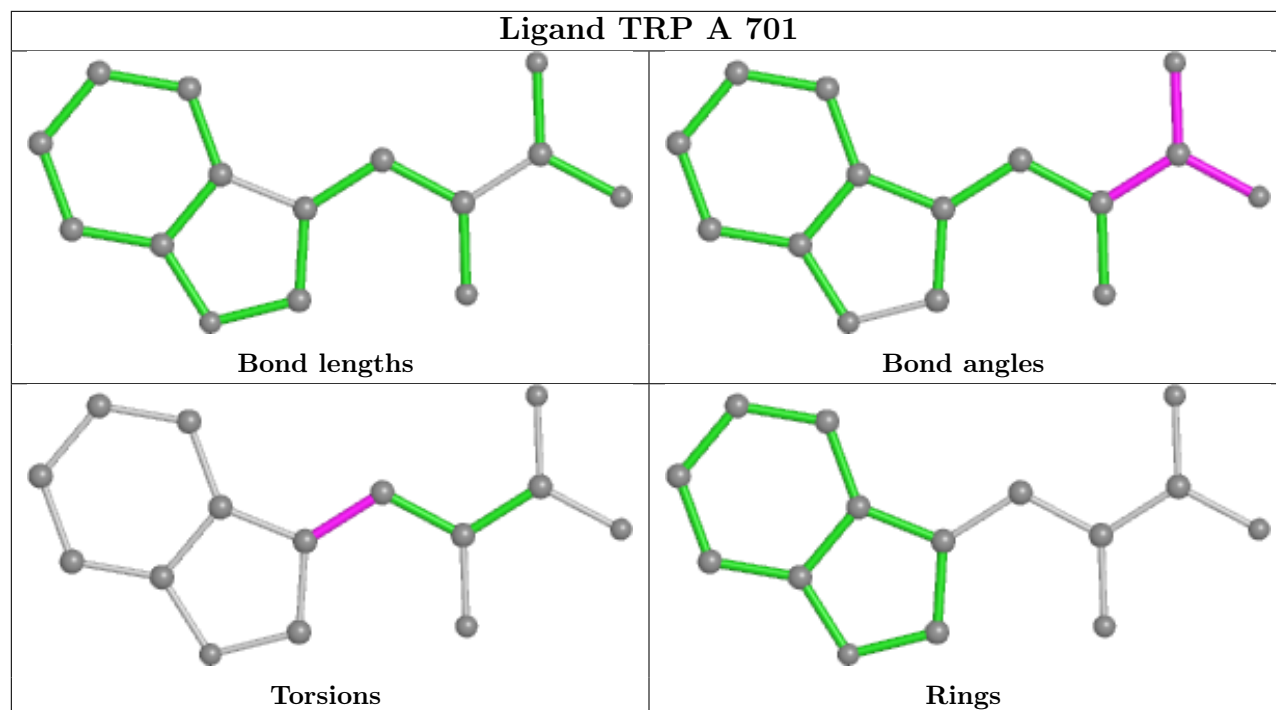
Bond angles



Torsions



Rings



5.7 Other polymers [i](#)

There are no such residues in this entry.

5.8 Polymer linkage issues [i](#)

There are no chain breaks in this entry.

6 Fit of model and data [i](#)

6.1 Protein, DNA and RNA chains [i](#)

In the following table, the column labelled '#RSRZ > 2' contains the number (and percentage) of RSRZ outliers, followed by percent RSRZ outliers for the chain as percentile scores relative to all X-ray entries and entries of similar resolution. The OWAB column contains the minimum, median, 95th percentile and maximum values of the occupancy-weighted average B-factor per residue. The column labelled 'Q < 0.9' lists the number of (and percentage) of residues with an average occupancy less than 0.9.

Mol	Chain	Analysed	<RSRZ>	#RSRZ>2	OWAB(Å ²)	Q<0.9
1	A	627/668 (93%)	-0.17	7 (1%) 77 78	29, 51, 86, 115	0

All (7) RSRZ outliers are listed below:

Mol	Chain	Res	Type	RSRZ
1	A	632	ALA	4.0
1	A	314	ALA	3.1
1	A	190	LEU	2.3
1	A	316	ILE	2.2
1	A	137	PHE	2.2
1	A	328	ALA	2.1
1	A	313	TYR	2.0

6.2 Non-standard residues in protein, DNA, RNA chains [i](#)

There are no non-standard protein/DNA/RNA residues in this entry.

6.3 Carbohydrates [i](#)

There are no oligosaccharides in this entry.

6.4 Ligands [i](#)

In the following table, the Atoms column lists the number of modelled atoms in the group and the number defined in the chemical component dictionary. The B-factors column lists the minimum, median, 95th percentile and maximum values of B factors of atoms in the group. The column labelled 'Q < 0.9' lists the number of atoms with occupancy less than 0.9.

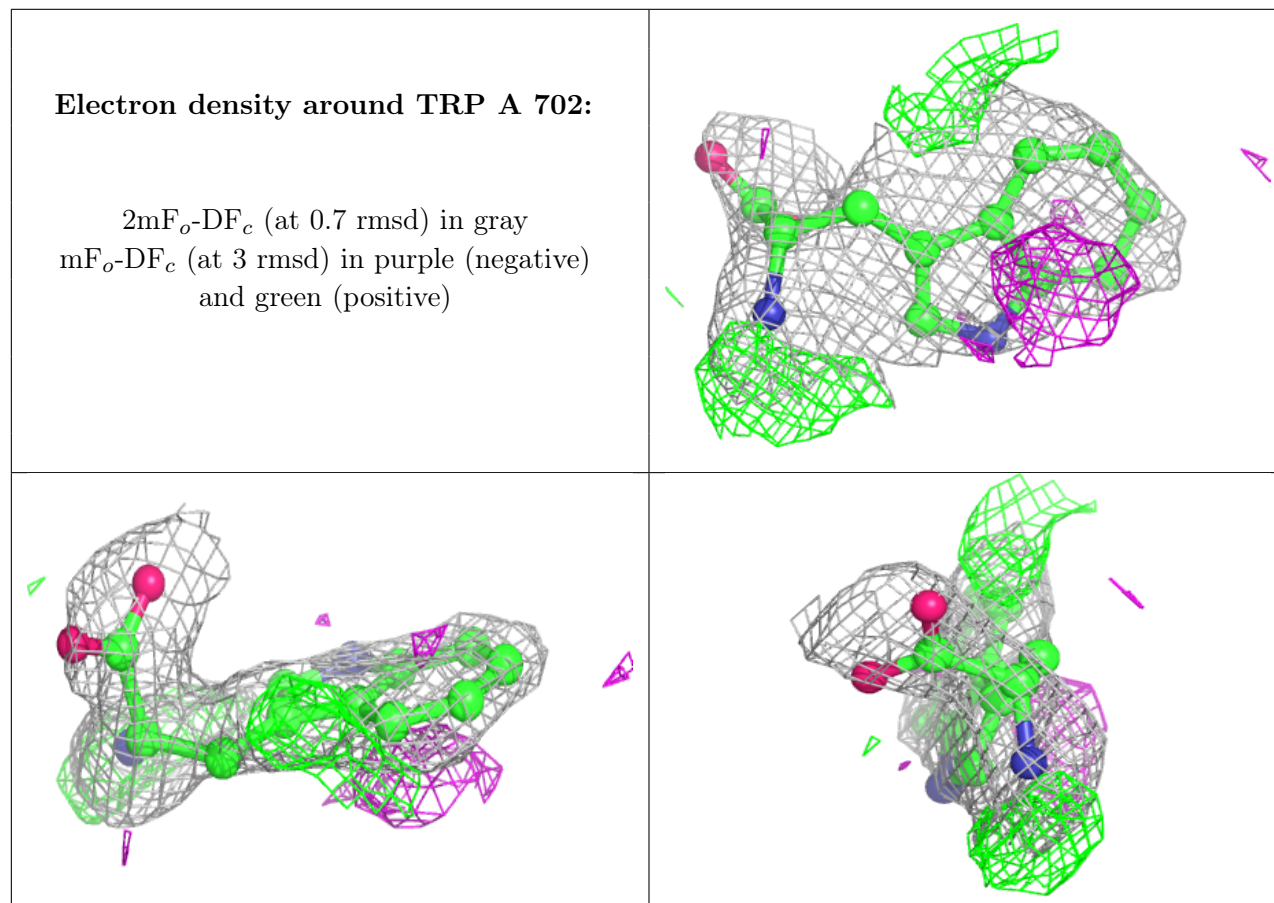
Mol	Type	Chain	Res	Atoms	RSCC	RSR	B-factors(Å ²)	Q<0.9
2	TRP	A	702	15/15	0.66	0.17	55,67,92,93	0

Continued on next page...

Continued from previous page...

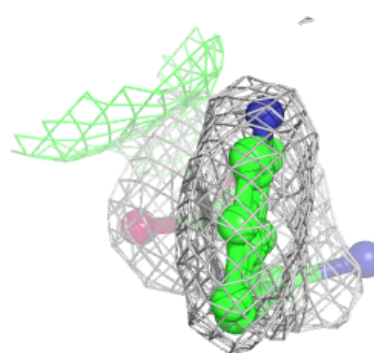
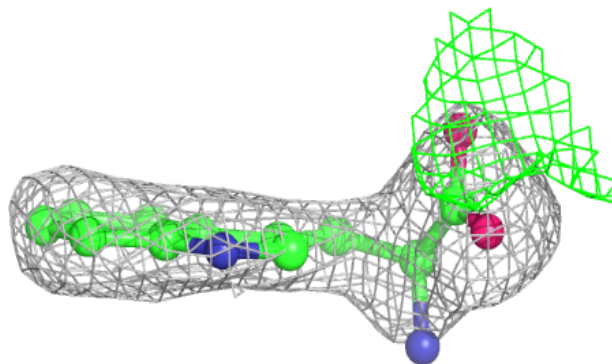
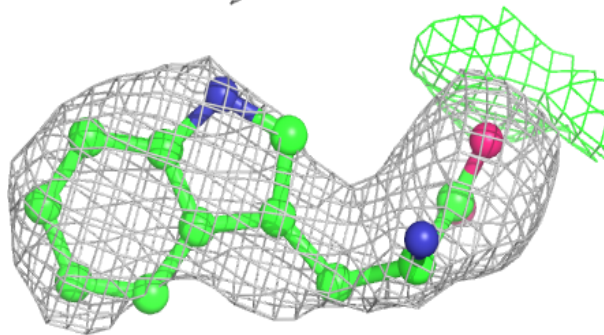
Mol	Type	Chain	Res	Atoms	RSCC	RSR	B-factors(\AA^2)	Q<0.9
2	TRP	A	701	15/15	0.88	0.11	60,68,74,75	0
3	FAD	A	703	53/53	0.97	0.05	26,33,41,47	0

The following is a graphical depiction of the model fit to experimental electron density of all instances of the Ligand of Interest. In addition, ligands with molecular weight > 250 and outliers as shown on the geometry validation Tables will also be included. Each fit is shown from different orientation to approximate a three-dimensional view.

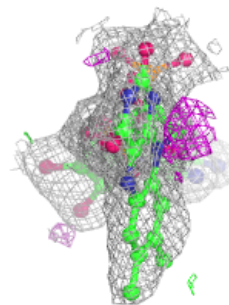
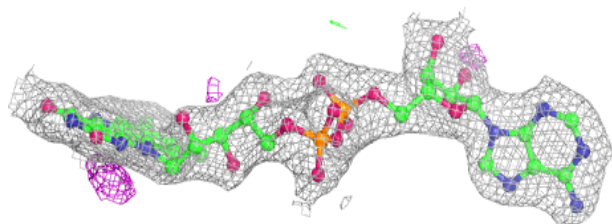
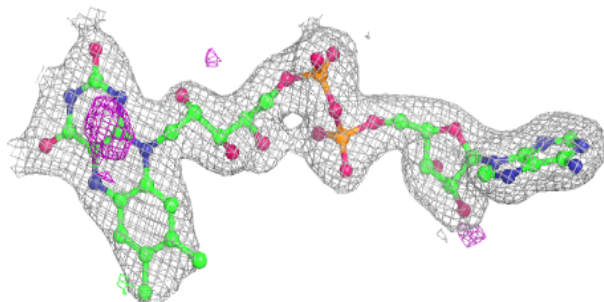


Electron density around TRP A 701:

$2mF_o-DF_c$ (at 0.7 rmsd) in gray
 mF_o-DF_c (at 3 rmsd) in purple (negative)
and green (positive)

**Electron density around FAD A 703:**

$2mF_o-DF_c$ (at 0.7 rmsd) in gray
 mF_o-DF_c (at 3 rmsd) in purple (negative)
and green (positive)



6.5 Other polymers [i](#)

There are no such residues in this entry.