



Full wwPDB EM Validation Report ⓘ

Nov 4, 2025 – 02:30 PM JST

PDB ID : 9VDV / pdb_00009vdv
EMDB ID : EMD-64992
Title : Cryo-EM structure of the catalytically inactive DRT4
Authors : Wang, Y.; Deng, Z.
Deposited on : 2025-06-09
Resolution : 2.70 Å(reported)

This is a Full wwPDB EM Validation Report for a publicly released PDB entry.

We welcome your comments at validation@mail.wwpdb.org

A user guide is available at

<https://www.wwpdb.org/validation/2017/EMValidationReportHelp>

with specific help available everywhere you see the ⓘ symbol.

The types of validation reports are described at

<http://www.wwpdb.org/validation/2017/FAQs#types>.

The following versions of software and data (see [references ⓘ](#)) were used in the production of this report:

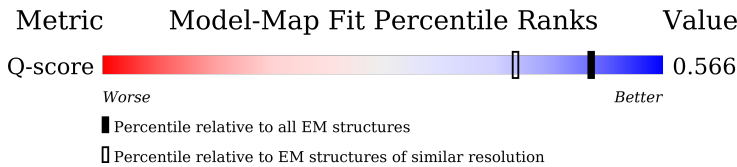
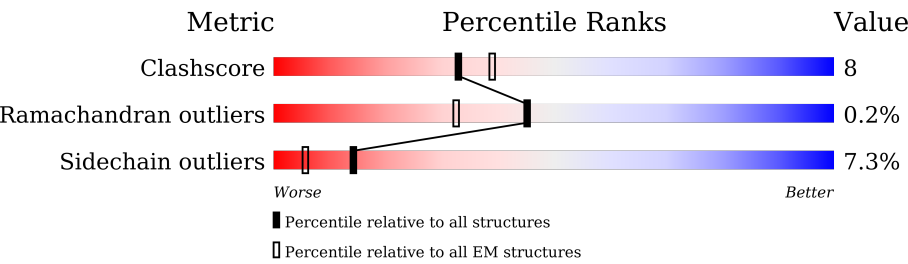
EMDB validation analysis : 0.0.1.dev129
MolProbity : 4-5-2 with Phenix2.0
Percentile statistics : 20231227.v01 (using entries in the PDB archive December 27th 2023)
EM percentile statistics : 202505.v01 (Using data in the EMDb archive up until May 2025)
MapQ : 1.9.13
Ideal geometry (proteins) : Engh & Huber (2001)
Ideal geometry (DNA, RNA) : Parkinson et al. (1996)
Validation Pipeline (wwPDB-VP) : 2.46

1 Overall quality at a glance i

The following experimental techniques were used to determine the structure:
ELECTRON MICROSCOPY

The reported resolution of this entry is 2.70 Å.

Percentile scores (ranging between 0-100) for global validation metrics of the entry are shown in the following graphic. The table shows the number of entries on which the scores are based.



Metric	Whole archive (#Entries)	EM structures (#Entries)	Similar EM resolution (#Entries, resolution range(Å))
Clashscore	210492	15764	-
Ramachandran outliers	207382	16835	-
Sidechain outliers	206894	16415	-
Q-score	-	25397	10327 (2.20 - 3.20)

The table below summarises the geometric issues observed across the polymeric chains and their fit to the map. The red, orange, yellow and green segments of the bar indicate the fraction of residues that contain outliers for ≥ 3 , 2, 1 and 0 types of geometric quality criteria respectively. A grey segment represents the fraction of residues that are not modelled. The numeric value for each fraction is indicated below the corresponding segment, with a dot representing fractions $\leq 5\%$. The upper red bar (where present) indicates the fraction of residues that have poor fit to the EM map (all-atom inclusion $< 40\%$). The numeric value is given above the bar.

Mol	Chain	Length	Quality of chain
1	A	549	<div><div>66%21%•10%</div></div>
1	B	549	<div><div>66%22%•10%</div></div>
1	C	549	<div><div>67%21%•10%</div></div>
1	D	549	<div><div>67%20%•10%</div></div>

Continued on next page...

Continued from previous page...

Mol	Chain	Length	Quality of chain
1	E	549	<div><div></div><div>67%</div><div>21%</div><div>• 10%</div></div>
1	F	549	<div><div></div><div>67%</div><div>21%</div><div>• 10%</div></div>

2 Entry composition

There is only 1 type of molecule in this entry. The entry contains 24258 atoms, of which 0 are hydrogens and 0 are deuteriums.

In the tables below, the AltConf column contains the number of residues with at least one atom in alternate conformation and the Trace column contains the number of residues modelled with at most 2 atoms.

- Molecule 1 is a protein called Reverse transcriptase domain-containing protein.

Mol	Chain	Residues	Atoms					AltConf	Trace
1	A	494	Total	C	N	O	S	0	0
			4043	2587	670	764	22		
1	B	494	Total	C	N	O	S	0	0
			4043	2587	670	764	22		
1	C	494	Total	C	N	O	S	0	0
			4043	2587	670	764	22		
1	D	494	Total	C	N	O	S	0	0
			4043	2587	670	764	22		
1	E	494	Total	C	N	O	S	0	0
			4043	2587	670	764	22		
1	F	494	Total	C	N	O	S	0	0
			4043	2587	670	764	22		

There are 66 discrepancies between the modelled and reference sequences:

Chain	Residue	Modelled	Actual	Comment	Reference
A	-8	HIS	-	expression tag	UNP A0A628R156
A	-7	HIS	-	expression tag	UNP A0A628R156
A	-6	HIS	-	expression tag	UNP A0A628R156
A	-5	HIS	-	expression tag	UNP A0A628R156
A	-4	HIS	-	expression tag	UNP A0A628R156
A	-3	HIS	-	expression tag	UNP A0A628R156
A	-2	SER	-	expression tag	UNP A0A628R156
A	-1	SER	-	expression tag	UNP A0A628R156
A	0	GLY	-	expression tag	UNP A0A628R156
A	240	ALA	ASP	conflict	UNP A0A628R156
A	241	ALA	ASP	conflict	UNP A0A628R156
B	-8	HIS	-	expression tag	UNP A0A628R156
B	-7	HIS	-	expression tag	UNP A0A628R156
B	-6	HIS	-	expression tag	UNP A0A628R156
B	-5	HIS	-	expression tag	UNP A0A628R156
B	-4	HIS	-	expression tag	UNP A0A628R156
B	-3	HIS	-	expression tag	UNP A0A628R156
B	-2	SER	-	expression tag	UNP A0A628R156

Continued on next page...

Continued from previous page...

Chain	Residue	Modelled	Actual	Comment	Reference
B	-1	SER	-	expression tag	UNP A0A628R156
B	0	GLY	-	expression tag	UNP A0A628R156
B	240	ALA	ASP	conflict	UNP A0A628R156
B	241	ALA	ASP	conflict	UNP A0A628R156
C	-8	HIS	-	expression tag	UNP A0A628R156
C	-7	HIS	-	expression tag	UNP A0A628R156
C	-6	HIS	-	expression tag	UNP A0A628R156
C	-5	HIS	-	expression tag	UNP A0A628R156
C	-4	HIS	-	expression tag	UNP A0A628R156
C	-3	HIS	-	expression tag	UNP A0A628R156
C	-2	SER	-	expression tag	UNP A0A628R156
C	-1	SER	-	expression tag	UNP A0A628R156
C	0	GLY	-	expression tag	UNP A0A628R156
C	240	ALA	ASP	conflict	UNP A0A628R156
C	241	ALA	ASP	conflict	UNP A0A628R156
D	-8	HIS	-	expression tag	UNP A0A628R156
D	-7	HIS	-	expression tag	UNP A0A628R156
D	-6	HIS	-	expression tag	UNP A0A628R156
D	-5	HIS	-	expression tag	UNP A0A628R156
D	-4	HIS	-	expression tag	UNP A0A628R156
D	-3	HIS	-	expression tag	UNP A0A628R156
D	-2	SER	-	expression tag	UNP A0A628R156
D	-1	SER	-	expression tag	UNP A0A628R156
D	0	GLY	-	expression tag	UNP A0A628R156
D	240	ALA	ASP	conflict	UNP A0A628R156
D	241	ALA	ASP	conflict	UNP A0A628R156
E	-8	HIS	-	expression tag	UNP A0A628R156
E	-7	HIS	-	expression tag	UNP A0A628R156
E	-6	HIS	-	expression tag	UNP A0A628R156
E	-5	HIS	-	expression tag	UNP A0A628R156
E	-4	HIS	-	expression tag	UNP A0A628R156
E	-3	HIS	-	expression tag	UNP A0A628R156
E	-2	SER	-	expression tag	UNP A0A628R156
E	-1	SER	-	expression tag	UNP A0A628R156
E	0	GLY	-	expression tag	UNP A0A628R156
E	240	ALA	ASP	conflict	UNP A0A628R156
E	241	ALA	ASP	conflict	UNP A0A628R156
F	-8	HIS	-	expression tag	UNP A0A628R156
F	-7	HIS	-	expression tag	UNP A0A628R156
F	-6	HIS	-	expression tag	UNP A0A628R156
F	-5	HIS	-	expression tag	UNP A0A628R156
F	-4	HIS	-	expression tag	UNP A0A628R156

Continued on next page...

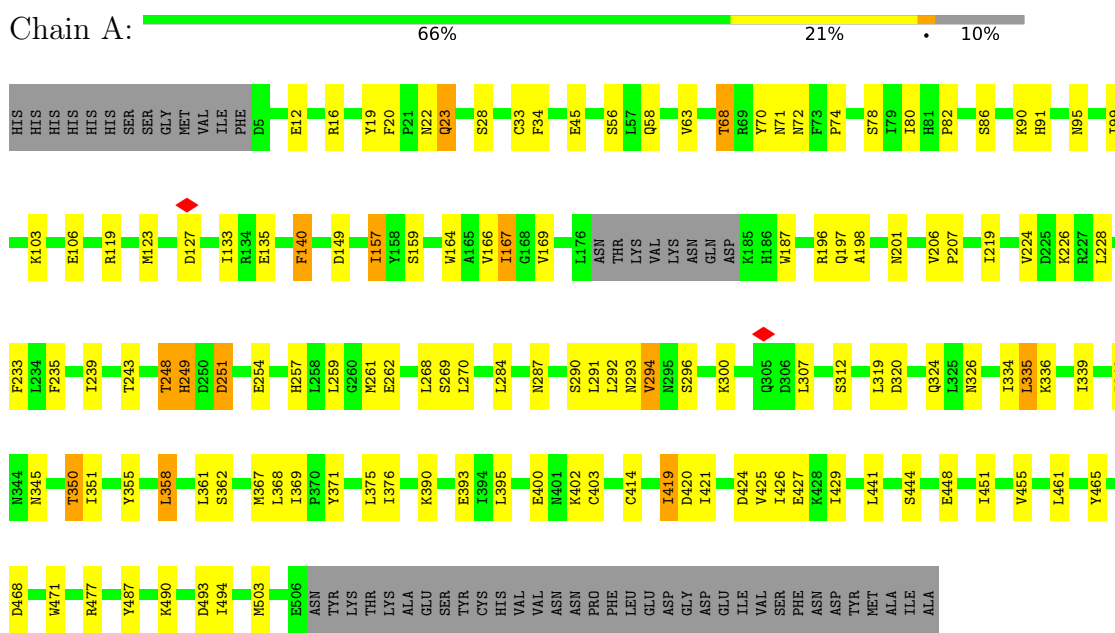
Continued from previous page...

Chain	Residue	Modelled	Actual	Comment	Reference
F	-3	HIS	-	expression tag	UNP A0A628R156
F	-2	SER	-	expression tag	UNP A0A628R156
F	-1	SER	-	expression tag	UNP A0A628R156
F	0	GLY	-	expression tag	UNP A0A628R156
F	240	ALA	ASP	conflict	UNP A0A628R156
F	241	ALA	ASP	conflict	UNP A0A628R156

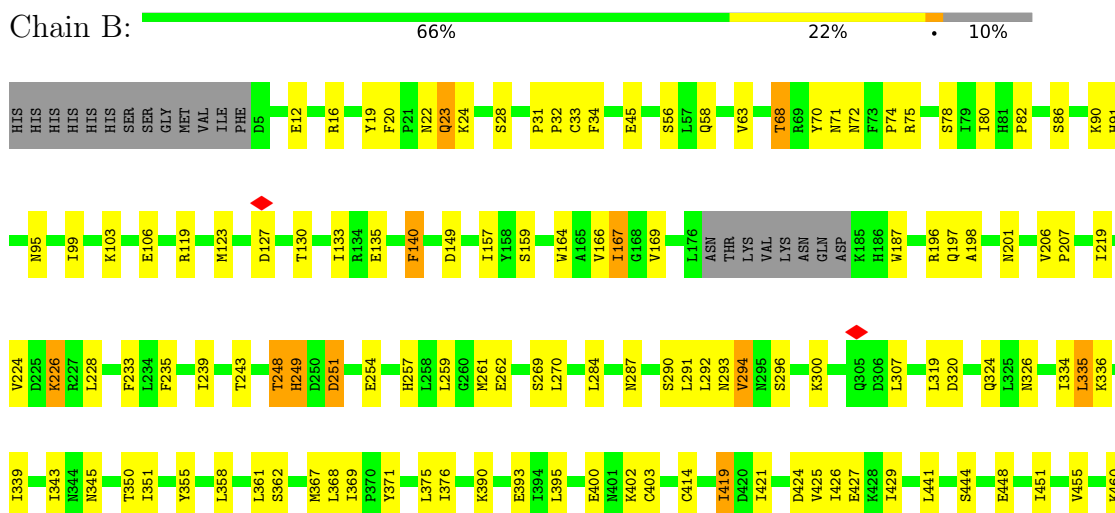
3 Residue-property plots

These plots are drawn for all protein, RNA, DNA and oligosaccharide chains in the entry. The first graphic for a chain summarises the proportions of the various outlier classes displayed in the second graphic. The second graphic shows the sequence view annotated by issues in geometry and atom inclusion in map density. Residues are color-coded according to the number of geometric quality criteria for which they contain at least one outlier: green = 0, yellow = 1, orange = 2 and red = 3 or more. A red diamond above a residue indicates a poor fit to the EM map for this residue (all-atom inclusion < 40%). Stretches of 2 or more consecutive residues without any outlier are shown as a green connector. Residues present in the sample, but not in the model, are shown in grey.

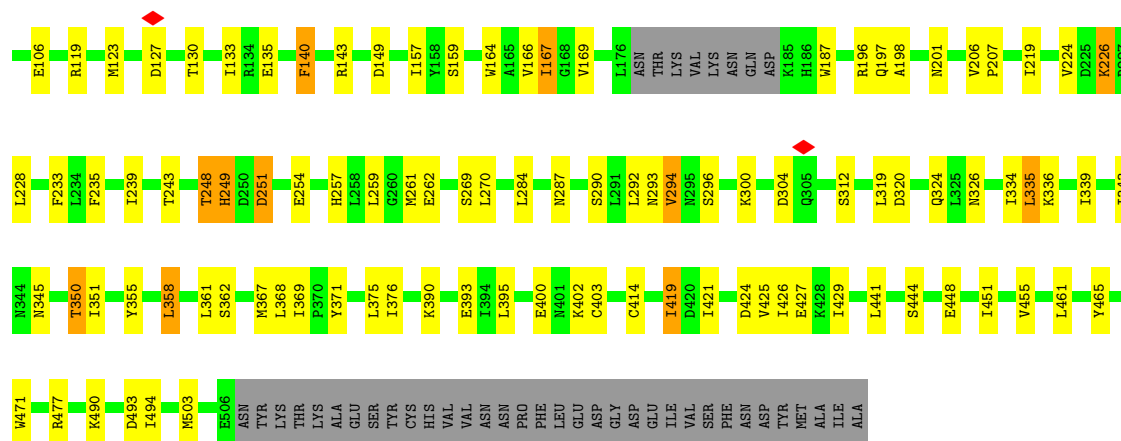
- Molecule 1: Reverse transcriptase domain-containing protein



- Molecule 1: Reverse transcriptase domain-containing protein

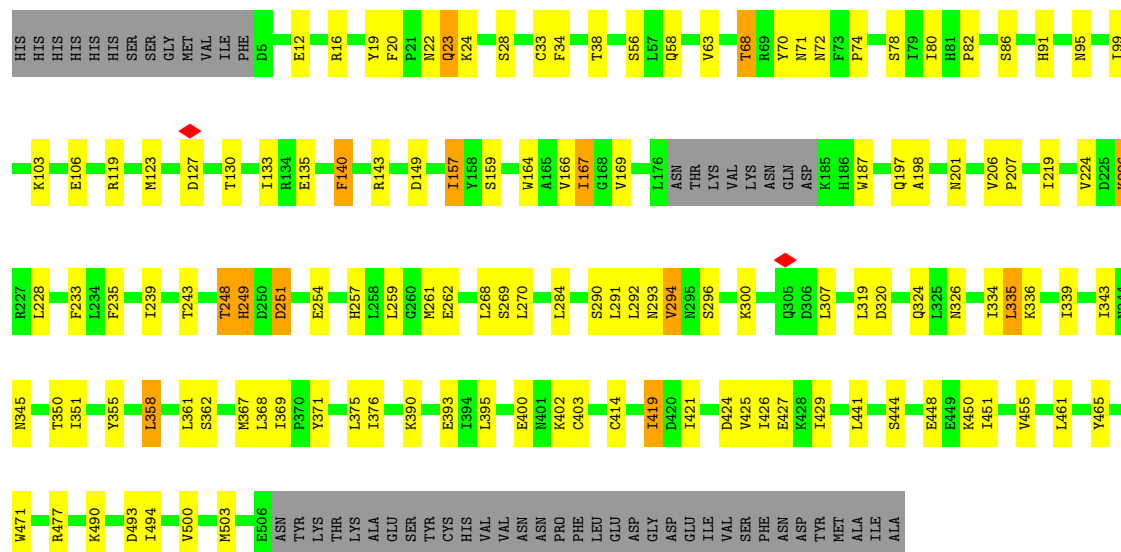






- Molecule 1: Reverse transcriptase domain-containing protein

Chain F: 67% 21% 10%



4 Experimental information

Property	Value	Source
EM reconstruction method	SINGLE PARTICLE	Depositor
Imposed symmetry	POINT, Not provided	
Number of particles used	126192	Depositor
Resolution determination method	FSC 0.143 CUT-OFF	Depositor
CTF correction method	PHASE FLIPPING ONLY	Depositor
Microscope	JEOL CRYO ARM 300	Depositor
Voltage (kV)	300	Depositor
Electron dose ($e^-/\text{\AA}^2$)	40	Depositor
Minimum defocus (nm)	500	Depositor
Maximum defocus (nm)	2500	Depositor
Magnification	Not provided	
Image detector	GATAN K3 (6k x 4k)	Depositor
Maximum map value	2.144	Depositor
Minimum map value	-1.361	Depositor
Average map value	0.000	Depositor
Map value standard deviation	0.062	Depositor
Recommended contour level	0.13	Depositor
Map size (\AA)	285.0, 285.0, 285.0	wwPDB
Map dimensions	300, 300, 300	wwPDB
Map angles ($^\circ$)	90.0, 90.0, 90.0	wwPDB
Pixel spacing (\AA)	0.95, 0.95, 0.95	Depositor

5 Model quality

5.1 Standard geometry

The Z score for a bond length (or angle) is the number of standard deviations the observed value is removed from the expected value. A bond length (or angle) with $|Z| > 5$ is considered an outlier worth inspection. RMSZ is the root-mean-square of all Z scores of the bond lengths (or angles).

Mol	Chain	Bond lengths		Bond angles	
		RMSZ	# $ Z > 5$	RMSZ	# $ Z > 5$
1	A	0.26	1/4140 (0.0%)	0.58	3/5604 (0.1%)
1	B	0.26	1/4140 (0.0%)	0.58	3/5604 (0.1%)
1	C	0.26	1/4140 (0.0%)	0.58	3/5604 (0.1%)
1	D	0.26	1/4140 (0.0%)	0.58	3/5604 (0.1%)
1	E	0.26	1/4140 (0.0%)	0.58	3/5604 (0.1%)
1	F	0.26	1/4140 (0.0%)	0.58	3/5604 (0.1%)
All	All	0.26	6/24840 (0.0%)	0.58	18/33624 (0.1%)

All (6) bond length outliers are listed below:

Mol	Chain	Res	Type	Atoms	Z	Observed(Å)	Ideal(Å)
1	E	74	PRO	CG-CD	-6.89	1.27	1.50
1	F	74	PRO	CG-CD	-6.89	1.27	1.50
1	C	74	PRO	CG-CD	-6.88	1.27	1.50
1	D	74	PRO	CG-CD	-6.88	1.27	1.50
1	A	74	PRO	CG-CD	-6.88	1.27	1.50
1	B	74	PRO	CG-CD	-6.87	1.27	1.50

All (18) bond angle outliers are listed below:

Mol	Chain	Res	Type	Atoms	Z	Observed(°)	Ideal(°)
1	E	74	PRO	N-CD-CG	-10.16	87.95	103.20
1	F	74	PRO	N-CD-CG	-10.15	87.97	103.20
1	A	74	PRO	N-CD-CG	-10.15	87.97	103.20
1	C	74	PRO	N-CD-CG	-10.15	87.97	103.20
1	D	74	PRO	N-CD-CG	-10.14	87.98	103.20
1	B	74	PRO	N-CD-CG	-10.13	88.00	103.20
1	C	74	PRO	CA-CB-CG	-6.13	92.84	104.50
1	E	74	PRO	CA-CB-CG	-6.13	92.84	104.50
1	B	74	PRO	CA-CB-CG	-6.13	92.85	104.50
1	A	74	PRO	CA-CB-CG	-6.13	92.85	104.50
1	F	74	PRO	CA-CB-CG	-6.13	92.86	104.50
1	D	74	PRO	CA-CB-CG	-6.11	92.89	104.50

Continued on next page...

Continued from previous page...

Mol	Chain	Res	Type	Atoms	Z	Observed(°)	Ideal(°)
1	A	393	GLU	CA-CB-CG	5.61	125.32	114.10
1	F	393	GLU	CA-CB-CG	5.61	125.31	114.10
1	B	393	GLU	CA-CB-CG	5.60	125.31	114.10
1	D	393	GLU	CA-CB-CG	5.60	125.29	114.10
1	E	393	GLU	CA-CB-CG	5.58	125.26	114.10
1	C	393	GLU	CA-CB-CG	5.55	125.21	114.10

There are no chirality outliers.

There are no planarity outliers.

5.2 Too-close contacts ⓘ

In the following table, the Non-H and H(model) columns list the number of non-hydrogen atoms and hydrogen atoms in the chain respectively. The H(added) column lists the number of hydrogen atoms added and optimized by MolProbity. The Clashes column lists the number of clashes within the asymmetric unit, whereas Symm-Clashes lists symmetry-related clashes.

Mol	Chain	Non-H	H(model)	H(added)	Clashes	Symm-Clashes
1	A	4043	0	3938	68	0
1	B	4043	0	3938	72	0
1	C	4043	0	3938	67	0
1	D	4043	0	3938	72	0
1	E	4043	0	3938	72	0
1	F	4043	0	3938	75	0
All	All	24258	0	23628	392	0

The all-atom clashscore is defined as the number of clashes found per 1000 atoms (including hydrogen atoms). The all-atom clashscore for this structure is 8.

All (392) close contacts within the same asymmetric unit are listed below, sorted by their clash magnitude.

Atom-1	Atom-2	Interatomic distance (Å)	Clash overlap (Å)
1:A:324:GLN:NE2	1:F:290:SER:OG	2.13	0.81
1:E:402:LYS:NZ	1:F:261:MET:SD	2.53	0.80
1:A:290:SER:OG	1:C:324:GLN:NE2	2.16	0.79
1:B:290:SER:OG	1:D:324:GLN:NE2	2.15	0.79
1:D:290:SER:OG	1:E:324:GLN:NE2	2.16	0.79
1:C:290:SER:OG	1:F:324:GLN:NE2	2.16	0.78
1:A:402:LYS:NZ	1:D:261:MET:SD	2.56	0.78
1:B:324:GLN:NE2	1:E:290:SER:OG	2.18	0.77

Continued on next page...

Continued from previous page...

Atom-1	Atom-2	Interatomic distance (Å)	Clash overlap (Å)
1:A:261:MET:SD	1:D:402:LYS:NZ	2.56	0.77
1:B:402:LYS:NZ	1:C:261:MET:SD	2.56	0.76
1:B:261:MET:SD	1:C:402:LYS:NZ	2.59	0.75
1:F:23:GLN:HB2	1:F:123:MET:HE2	1.72	0.72
1:E:23:GLN:HB2	1:E:123:MET:HE2	1.72	0.71
1:D:23:GLN:HB2	1:D:123:MET:HE2	1.72	0.71
1:B:23:GLN:HB2	1:B:123:MET:HE2	1.72	0.70
1:C:23:GLN:HB2	1:C:123:MET:HE2	1.72	0.70
1:C:135:GLU:HG3	1:C:284:LEU:HD22	1.74	0.70
1:E:135:GLU:HG3	1:E:284:LEU:HD22	1.74	0.70
1:A:135:GLU:HG3	1:A:284:LEU:HD22	1.74	0.69
1:A:23:GLN:HB2	1:A:123:MET:HE2	1.72	0.69
1:D:135:GLU:HG3	1:D:284:LEU:HD22	1.74	0.69
1:B:135:GLU:HG3	1:B:284:LEU:HD22	1.74	0.69
1:F:135:GLU:HG3	1:F:284:LEU:HD22	1.74	0.68
1:C:166:VAL:HG12	1:C:167:ILE:HG23	1.77	0.67
1:A:166:VAL:HG12	1:A:167:ILE:HG23	1.77	0.67
1:F:166:VAL:HG12	1:F:167:ILE:HG23	1.77	0.67
1:D:166:VAL:HG12	1:D:167:ILE:HG23	1.77	0.67
1:E:166:VAL:HG12	1:E:167:ILE:HG23	1.77	0.67
1:B:166:VAL:HG12	1:B:167:ILE:HG23	1.77	0.67
1:E:261:MET:SD	1:F:402:LYS:NZ	2.65	0.65
1:C:336:LYS:HG2	1:C:371:TYR:HE2	1.64	0.63
1:F:336:LYS:HG2	1:F:371:TYR:HE2	1.64	0.63
1:A:336:LYS:HG2	1:A:371:TYR:HE2	1.64	0.63
1:D:336:LYS:HG2	1:D:371:TYR:HE2	1.64	0.62
1:E:336:LYS:HG2	1:E:371:TYR:HE2	1.64	0.62
1:B:197:GLN:NE2	1:B:201:ASN:OD1	2.31	0.62
1:B:336:LYS:HG2	1:B:371:TYR:HE2	1.64	0.62
1:A:197:GLN:NE2	1:A:201:ASN:OD1	2.31	0.62
1:C:197:GLN:NE2	1:C:201:ASN:OD1	2.31	0.61
1:E:197:GLN:NE2	1:E:201:ASN:OD1	2.31	0.60
1:F:248:THR:OG1	1:F:249:HIS:N	2.36	0.59
1:B:248:THR:OG1	1:B:249:HIS:N	2.36	0.59
1:C:248:THR:OG1	1:C:249:HIS:N	2.36	0.59
1:A:248:THR:OG1	1:A:249:HIS:N	2.36	0.58
1:D:326:ASN:HA	1:D:334:ILE:HD13	1.86	0.58
1:A:326:ASN:HA	1:A:334:ILE:HD13	1.86	0.58
1:D:424:ASP:HA	1:D:427:GLU:HG2	1.86	0.58
1:E:248:THR:OG1	1:E:249:HIS:N	2.36	0.58
1:F:424:ASP:HA	1:F:427:GLU:HG2	1.86	0.58

Continued on next page...

Continued from previous page...

Atom-1	Atom-2	Interatomic distance (Å)	Clash overlap (Å)
1:D:164:TRP:HB3	1:D:169:VAL:HG12	1.86	0.58
1:D:197:GLN:NE2	1:D:201:ASN:OD1	2.31	0.57
1:F:95:ASN:ND2	1:F:187:TRP:HB2	2.19	0.57
1:A:95:ASN:ND2	1:A:187:TRP:HB2	2.19	0.57
1:A:164:TRP:HB3	1:A:169:VAL:HG12	1.86	0.57
1:C:95:ASN:ND2	1:C:187:TRP:HB2	2.19	0.57
1:C:326:ASN:HA	1:C:334:ILE:HD13	1.86	0.57
1:C:424:ASP:HA	1:C:427:GLU:HG2	1.86	0.57
1:F:164:TRP:HB3	1:F:169:VAL:HG12	1.86	0.57
1:E:326:ASN:HA	1:E:334:ILE:HD13	1.86	0.57
1:D:95:ASN:ND2	1:D:187:TRP:HB2	2.19	0.57
1:E:95:ASN:ND2	1:E:187:TRP:HB2	2.19	0.57
1:E:224:VAL:HG13	1:E:262:GLU:HB3	1.87	0.57
1:D:248:THR:OG1	1:D:249:HIS:N	2.36	0.57
1:A:224:VAL:HG13	1:A:262:GLU:HB3	1.87	0.57
1:B:424:ASP:HA	1:B:427:GLU:HG2	1.86	0.57
1:C:224:VAL:HG13	1:C:262:GLU:HB3	1.87	0.57
1:E:424:ASP:HA	1:E:427:GLU:HG2	1.86	0.57
1:B:78:SER:HB2	1:B:207:PRO:HB3	1.87	0.56
1:B:326:ASN:HA	1:B:334:ILE:HD13	1.86	0.56
1:C:78:SER:HB2	1:C:207:PRO:HB3	1.87	0.56
1:D:224:VAL:HG13	1:D:262:GLU:HB3	1.87	0.56
1:C:164:TRP:HB3	1:C:169:VAL:HG12	1.86	0.56
1:D:448:GLU:OE2	1:D:477:ARG:NH2	2.38	0.56
1:F:197:GLN:NE2	1:F:201:ASN:OD1	2.31	0.56
1:F:224:VAL:HG13	1:F:262:GLU:HB3	1.87	0.56
1:D:78:SER:HB2	1:D:207:PRO:HB3	1.87	0.56
1:E:448:GLU:OE2	1:E:477:ARG:NH2	2.38	0.56
1:F:78:SER:HB2	1:F:207:PRO:HB3	1.87	0.56
1:A:448:GLU:OE2	1:A:477:ARG:NH2	2.38	0.56
1:B:95:ASN:ND2	1:B:187:TRP:HB2	2.19	0.56
1:B:164:TRP:HB3	1:B:169:VAL:HG12	1.86	0.56
1:E:164:TRP:HB3	1:E:169:VAL:HG12	1.86	0.56
1:F:326:ASN:HA	1:F:334:ILE:HD13	1.86	0.56
1:A:257:HIS:ND1	1:D:400:GLU:OE1	2.39	0.56
1:A:12:GLU:OE2	1:A:16:ARG:NH1	2.39	0.56
1:A:424:ASP:HA	1:A:427:GLU:HG2	1.86	0.56
1:B:448:GLU:OE2	1:B:477:ARG:NH2	2.38	0.56
1:B:224:VAL:HG13	1:B:262:GLU:HB3	1.87	0.56
1:A:300:LYS:NZ	1:C:307:LEU:O	2.31	0.56
1:E:78:SER:HB2	1:E:207:PRO:HB3	1.87	0.56

Continued on next page...

Continued from previous page...

Atom-1	Atom-2	Interatomic distance (Å)	Clash overlap (Å)
1:E:400:GLU:OE1	1:F:257:HIS:ND1	2.39	0.55
1:A:78:SER:HB2	1:A:207:PRO:HB3	1.87	0.55
1:C:448:GLU:OE2	1:C:477:ARG:NH2	2.38	0.55
1:F:448:GLU:OE2	1:F:477:ARG:NH2	2.38	0.55
1:A:22:ASN:O	1:A:119:ARG:NH1	2.38	0.55
1:B:22:ASN:O	1:B:119:ARG:NH1	2.38	0.55
1:F:12:GLU:OE2	1:F:16:ARG:NH1	2.39	0.55
1:B:12:GLU:OE2	1:B:16:ARG:NH1	2.39	0.55
1:B:300:LYS:NZ	1:D:307:LEU:O	2.32	0.55
1:D:12:GLU:OE2	1:D:16:ARG:NH1	2.39	0.55
1:F:22:ASN:O	1:F:119:ARG:NH1	2.38	0.55
1:C:12:GLU:OE2	1:C:16:ARG:NH1	2.39	0.54
1:E:12:GLU:OE2	1:E:16:ARG:NH1	2.39	0.54
1:B:292:LEU:HD11	1:B:334:ILE:HG23	1.90	0.54
1:C:292:LEU:HD11	1:C:334:ILE:HG23	1.90	0.54
1:F:292:LEU:HD11	1:F:334:ILE:HG23	1.90	0.54
1:C:22:ASN:O	1:C:119:ARG:NH1	2.38	0.54
1:E:22:ASN:O	1:E:119:ARG:NH1	2.38	0.53
1:E:292:LEU:HD11	1:E:334:ILE:HG23	1.90	0.53
1:B:400:GLU:OE1	1:C:257:HIS:ND1	2.42	0.53
1:F:82:PRO:O	1:F:86:SER:OG	2.25	0.53
1:A:400:GLU:OE1	1:D:257:HIS:ND1	2.42	0.53
1:B:82:PRO:O	1:B:86:SER:OG	2.25	0.53
1:A:292:LEU:HD11	1:A:334:ILE:HG23	1.90	0.53
1:E:82:PRO:O	1:E:86:SER:OG	2.25	0.53
1:A:19:TYR:OH	1:A:80:ILE:O	2.25	0.53
1:D:292:LEU:HD11	1:D:334:ILE:HG23	1.90	0.53
1:B:80:ILE:HD13	1:B:198:ALA:HB1	1.92	0.52
1:D:80:ILE:HD13	1:D:198:ALA:HB1	1.92	0.52
1:C:80:ILE:HD13	1:C:198:ALA:HB1	1.91	0.52
1:A:233:PHE:HZ	1:A:254:GLU:HG3	1.75	0.52
1:A:80:ILE:HD13	1:A:198:ALA:HB1	1.92	0.52
1:B:414:CYS:HA	1:B:419:ILE:HG23	1.92	0.52
1:F:80:ILE:HD13	1:F:198:ALA:HB1	1.92	0.52
1:C:414:CYS:HA	1:C:419:ILE:HG23	1.92	0.52
1:E:80:ILE:HD13	1:E:198:ALA:HB1	1.92	0.52
1:D:70:TYR:HA	1:D:367:MET:HE3	1.92	0.52
1:B:70:TYR:HA	1:B:367:MET:HE3	1.92	0.52
1:F:414:CYS:HA	1:F:419:ILE:HG23	1.92	0.52
1:C:70:TYR:HA	1:C:367:MET:HE3	1.92	0.51
1:C:82:PRO:O	1:C:86:SER:OG	2.25	0.51

Continued on next page...

Continued from previous page...

Atom-1	Atom-2	Interatomic distance (Å)	Clash overlap (Å)
1:E:233:PHE:HZ	1:E:254:GLU:HG3	1.74	0.51
1:B:307:LEU:O	1:E:300:LYS:NZ	2.32	0.51
1:D:22:ASN:O	1:D:119:ARG:NH1	2.38	0.51
1:F:233:PHE:HZ	1:F:254:GLU:HG3	1.75	0.51
1:D:233:PHE:HZ	1:D:254:GLU:HG3	1.74	0.51
1:B:233:PHE:HZ	1:B:254:GLU:HG3	1.74	0.51
1:C:19:TYR:OH	1:C:80:ILE:O	2.25	0.51
1:D:82:PRO:O	1:D:86:SER:OG	2.25	0.51
1:A:70:TYR:HA	1:A:367:MET:HE3	1.91	0.51
1:F:361:LEU:HB3	1:F:368:LEU:HD23	1.93	0.51
1:B:361:LEU:HB3	1:B:368:LEU:HD23	1.93	0.51
1:D:414:CYS:HA	1:D:419:ILE:HG23	1.92	0.51
1:E:414:CYS:HA	1:E:419:ILE:HG23	1.92	0.51
1:D:19:TYR:OH	1:D:80:ILE:O	2.25	0.51
1:E:70:TYR:HA	1:E:367:MET:HE3	1.92	0.51
1:F:70:TYR:HA	1:F:367:MET:HE3	1.92	0.51
1:A:414:CYS:HA	1:A:419:ILE:HG23	1.92	0.50
1:C:233:PHE:HZ	1:C:254:GLU:HG3	1.75	0.50
1:A:361:LEU:HB3	1:A:368:LEU:HD23	1.93	0.50
1:B:257:HIS:ND1	1:C:400:GLU:OE1	2.44	0.50
1:B:390:LYS:HE2	1:E:140:PHE:CD2	2.46	0.49
1:A:320:ASP:O	1:A:324:GLN:HG3	2.12	0.49
1:E:361:LEU:HB3	1:E:368:LEU:HD23	1.93	0.49
1:A:82:PRO:O	1:A:86:SER:OG	2.25	0.49
1:B:320:ASP:O	1:B:324:GLN:HG3	2.12	0.49
1:E:320:ASP:O	1:E:324:GLN:HG3	2.12	0.49
1:B:19:TYR:OH	1:B:80:ILE:O	2.25	0.49
1:C:351:ILE:O	1:C:355:TYR:HB2	2.13	0.49
1:D:361:LEU:HB3	1:D:368:LEU:HD23	1.93	0.49
1:C:320:ASP:O	1:C:324:GLN:HG3	2.12	0.49
1:C:361:LEU:HB3	1:C:368:LEU:HD23	1.93	0.49
1:F:19:TYR:OH	1:F:80:ILE:O	2.25	0.49
1:A:351:ILE:O	1:A:355:TYR:HB2	2.13	0.49
1:E:257:HIS:ND1	1:F:400:GLU:OE1	2.46	0.49
1:D:351:ILE:O	1:D:355:TYR:HB2	2.13	0.49
1:F:351:ILE:O	1:F:355:TYR:HB2	2.13	0.49
1:D:140:PHE:CD2	1:E:390:LYS:HE2	2.48	0.48
1:A:339:ILE:O	1:A:343:ILE:HB	2.13	0.48
1:B:339:ILE:O	1:B:343:ILE:HB	2.14	0.48
1:B:351:ILE:O	1:B:355:TYR:HB2	2.13	0.48
1:D:320:ASP:O	1:D:324:GLN:HG3	2.12	0.48

Continued on next page...

Continued from previous page...

Atom-1	Atom-2	Interatomic distance (Å)	Clash overlap (Å)
1:E:351:ILE:O	1:E:355:TYR:HB2	2.13	0.48
1:F:320:ASP:O	1:F:324:GLN:HG3	2.12	0.48
1:E:339:ILE:O	1:E:343:ILE:HB	2.13	0.48
1:B:58:GLN:O	1:B:465:TYR:OH	2.31	0.48
1:C:339:ILE:O	1:C:343:ILE:HB	2.13	0.48
1:A:58:GLN:O	1:A:465:TYR:OH	2.31	0.48
1:C:343:ILE:HD11	1:C:375:LEU:HD21	1.96	0.48
1:B:343:ILE:HD11	1:B:375:LEU:HD21	1.96	0.48
1:D:339:ILE:O	1:D:343:ILE:HB	2.13	0.48
1:E:343:ILE:HD11	1:E:375:LEU:HD21	1.96	0.48
1:F:339:ILE:O	1:F:343:ILE:HB	2.13	0.47
1:F:343:ILE:HD11	1:F:375:LEU:HD21	1.96	0.47
1:B:103:LYS:HB3	1:B:103:LYS:HE2	1.75	0.47
1:A:307:LEU:O	1:F:300:LYS:NZ	2.39	0.47
1:D:91:HIS:CE1	1:D:95:ASN:HD21	2.32	0.47
1:F:226:LYS:HB3	1:F:226:LYS:HE2	1.51	0.47
1:F:91:HIS:CE1	1:F:95:ASN:HD21	2.32	0.47
1:A:91:HIS:CE1	1:A:95:ASN:HD21	2.32	0.47
1:A:140:PHE:CD2	1:C:390:LYS:HE2	2.49	0.47
1:B:335:LEU:HB3	1:B:368:LEU:HD21	1.97	0.47
1:E:335:LEU:HB3	1:E:368:LEU:HD21	1.97	0.47
1:A:343:ILE:HD11	1:A:375:LEU:HD21	1.96	0.47
1:D:33:CYS:HB2	1:D:503:MET:HE3	1.97	0.47
1:D:343:ILE:HD11	1:D:375:LEU:HD21	1.96	0.47
1:E:91:HIS:CE1	1:E:95:ASN:HD21	2.32	0.47
1:B:91:HIS:CE1	1:B:95:ASN:HD21	2.32	0.46
1:C:33:CYS:HB2	1:C:503:MET:HE3	1.97	0.46
1:C:226:LYS:HB3	1:C:226:LYS:HE2	1.51	0.46
1:C:335:LEU:HB3	1:C:368:LEU:HD21	1.97	0.46
1:F:335:LEU:HB3	1:F:368:LEU:HD21	1.97	0.46
1:A:335:LEU:HB3	1:A:368:LEU:HD21	1.97	0.46
1:C:91:HIS:CE1	1:C:95:ASN:HD21	2.32	0.46
1:A:390:LYS:HE2	1:F:140:PHE:CD2	2.50	0.46
1:A:468:ASP:OD1	1:A:487:TYR:OH	2.31	0.46
1:B:127:ASP:OD1	1:B:130:THR:OG1	2.28	0.46
1:E:33:CYS:HB2	1:E:503:MET:HE3	1.97	0.46
1:F:33:CYS:HB2	1:F:503:MET:HE3	1.97	0.46
1:F:251:ASP:OD1	1:F:251:ASP:N	2.49	0.46
1:E:362:SER:HB3	1:E:369:ILE:HG12	1.98	0.46
1:B:140:PHE:CD2	1:D:390:LYS:HE2	2.50	0.46
1:B:503:MET:HE2	1:B:503:MET:HB3	1.76	0.46

Continued on next page...

Continued from previous page...

Atom-1	Atom-2	Interatomic distance (Å)	Clash overlap (Å)
1:F:58:GLN:O	1:F:465:TYR:OH	2.31	0.46
1:C:362:SER:HB3	1:C:369:ILE:HG12	1.98	0.46
1:D:335:LEU:HB3	1:D:368:LEU:HD21	1.97	0.46
1:D:390:LYS:HD2	1:D:390:LYS:HA	1.67	0.46
1:A:33:CYS:HB2	1:A:503:MET:HE3	1.97	0.46
1:A:287:ASN:HB2	1:C:324:GLN:OE1	2.15	0.46
1:E:251:ASP:N	1:E:251:ASP:OD1	2.49	0.46
1:B:390:LYS:HD2	1:B:390:LYS:HA	1.67	0.46
1:A:228:LEU:HD11	1:A:259:LEU:HD13	1.98	0.45
1:B:269:SER:OG	1:B:270:LEU:N	2.49	0.45
1:A:362:SER:HB3	1:A:369:ILE:HG12	1.98	0.45
1:B:33:CYS:HB2	1:B:503:MET:HE3	1.97	0.45
1:B:287:ASN:HB2	1:D:324:GLN:OE1	2.17	0.45
1:D:251:ASP:OD1	1:D:251:ASP:N	2.49	0.45
1:F:358:LEU:HD12	1:F:358:LEU:HA	1.85	0.45
1:F:503:MET:HE2	1:F:503:MET:HB3	1.76	0.45
1:E:269:SER:OG	1:E:270:LEU:N	2.49	0.45
1:C:269:SER:OG	1:C:270:LEU:N	2.49	0.45
1:A:103:LYS:HB3	1:A:103:LYS:HE2	1.75	0.45
1:A:251:ASP:N	1:A:251:ASP:OD1	2.49	0.45
1:E:103:LYS:HB3	1:E:103:LYS:HE2	1.75	0.45
1:F:362:SER:HB3	1:F:369:ILE:HG12	1.98	0.45
1:D:362:SER:HB3	1:D:369:ILE:HG12	1.98	0.45
1:D:228:LEU:HD11	1:D:259:LEU:HD13	1.98	0.44
1:D:269:SER:OG	1:D:270:LEU:N	2.49	0.44
1:F:228:LEU:HD11	1:F:259:LEU:HD13	1.98	0.44
1:F:269:SER:OG	1:F:270:LEU:N	2.49	0.44
1:A:269:SER:OG	1:A:270:LEU:N	2.49	0.44
1:B:228:LEU:HD11	1:B:259:LEU:HD13	1.98	0.44
1:B:251:ASP:OD1	1:B:251:ASP:N	2.49	0.44
1:B:362:SER:HB3	1:B:369:ILE:HG12	1.98	0.44
1:C:251:ASP:N	1:C:251:ASP:OD1	2.49	0.44
1:D:319:LEU:HD12	1:D:319:LEU:HA	1.90	0.44
1:F:261:MET:HE3	1:F:261:MET:HB3	1.90	0.44
1:A:45:GLU:OE1	1:A:90:LYS:NZ	2.39	0.44
1:A:395:LEU:HD22	1:A:429:ILE:HD11	2.00	0.44
1:B:460:LYS:HB2	1:B:460:LYS:HE3	1.83	0.44
1:E:395:LEU:HD22	1:E:429:ILE:HD11	2.00	0.44
1:B:395:LEU:HD22	1:B:429:ILE:HD11	2.00	0.44
1:C:228:LEU:HD11	1:C:259:LEU:HD13	1.98	0.44
1:C:395:LEU:HD22	1:C:429:ILE:HD11	2.00	0.44

Continued on next page...

Continued from previous page...

Atom-1	Atom-2	Interatomic distance (Å)	Clash overlap (Å)
1:C:20:PHE:HE2	1:C:34:PHE:HB3	1.83	0.44
1:C:140:PHE:CD2	1:F:390:LYS:HE2	2.53	0.44
1:C:287:ASN:HB2	1:F:324:GLN:OE1	2.17	0.44
1:C:300:LYS:NZ	1:F:307:LEU:O	2.37	0.44
1:D:58:GLN:O	1:D:465:TYR:OH	2.31	0.44
1:F:390:LYS:HD2	1:F:390:LYS:HA	1.67	0.44
1:D:395:LEU:HD22	1:D:429:ILE:HD11	2.00	0.44
1:B:20:PHE:HE2	1:B:34:PHE:HB3	1.83	0.44
1:B:226:LYS:HB3	1:B:226:LYS:HE2	1.51	0.44
1:E:228:LEU:HD11	1:E:259:LEU:HD13	1.98	0.44
1:F:127:ASP:OD1	1:F:130:THR:OG1	2.28	0.44
1:F:395:LEU:HD22	1:F:429:ILE:HD11	2.00	0.44
1:B:441:LEU:O	1:B:444:SER:OG	2.36	0.44
1:E:20:PHE:HE2	1:E:34:PHE:HB3	1.83	0.44
1:F:20:PHE:HE2	1:F:34:PHE:HB3	1.83	0.44
1:D:20:PHE:HE2	1:D:34:PHE:HB3	1.83	0.43
1:D:290:SER:O	1:D:294:VAL:HB	2.18	0.43
1:A:490:LYS:O	1:A:494:ILE:HG13	2.19	0.43
1:B:290:SER:O	1:B:294:VAL:HB	2.18	0.43
1:C:490:LYS:O	1:C:494:ILE:HG13	2.18	0.43
1:F:290:SER:O	1:F:294:VAL:HB	2.18	0.43
1:A:20:PHE:HE2	1:A:34:PHE:HB3	1.83	0.43
1:A:290:SER:O	1:A:294:VAL:HB	2.18	0.43
1:B:451:ILE:HD13	1:B:451:ILE:HA	1.89	0.43
1:B:490:LYS:O	1:B:494:ILE:HG13	2.19	0.43
1:D:103:LYS:HE2	1:D:103:LYS:HB3	1.75	0.43
1:F:490:LYS:O	1:F:494:ILE:HG13	2.18	0.43
1:A:390:LYS:HD2	1:A:390:LYS:HA	1.67	0.43
1:C:63:VAL:HG23	1:C:471:TRP:CD1	2.53	0.43
1:D:63:VAL:HG23	1:D:471:TRP:CD1	2.54	0.43
1:E:490:LYS:O	1:E:494:ILE:HG13	2.18	0.43
1:E:493:ASP:OD2	1:E:493:ASP:N	2.52	0.43
1:B:24:LYS:HB2	1:B:24:LYS:HE3	1.87	0.43
1:C:103:LYS:HE2	1:C:103:LYS:HB3	1.75	0.43
1:C:290:SER:O	1:C:294:VAL:HB	2.19	0.43
1:D:441:LEU:O	1:D:444:SER:OG	2.36	0.43
1:F:103:LYS:HB3	1:F:103:LYS:HE2	1.75	0.43
1:B:63:VAL:HG23	1:B:471:TRP:CD1	2.54	0.43
1:B:493:ASP:OD2	1:B:493:ASP:N	2.52	0.43
1:C:235:PHE:HA	1:C:243:THR:O	2.19	0.43
1:D:493:ASP:OD2	1:D:493:ASP:N	2.52	0.43

Continued on next page...

Continued from previous page...

Atom-1	Atom-2	Interatomic distance (Å)	Clash overlap (Å)
1:F:24:LYS:HB2	1:F:24:LYS:HE3	1.87	0.43
1:F:63:VAL:HG23	1:F:471:TRP:CD1	2.54	0.43
1:A:63:VAL:HG23	1:A:471:TRP:CD1	2.54	0.43
1:B:291:LEU:HD23	1:B:291:LEU:HA	1.87	0.43
1:D:95:ASN:HD22	1:D:187:TRP:HB2	1.84	0.43
1:D:99:ILE:HG23	1:D:219:ILE:HD11	2.01	0.43
1:F:441:LEU:O	1:F:444:SER:OG	2.36	0.43
1:A:358:LEU:HD12	1:A:358:LEU:HA	1.85	0.43
1:C:493:ASP:OD2	1:C:493:ASP:N	2.52	0.43
1:E:63:VAL:HG23	1:E:471:TRP:CD1	2.54	0.43
1:E:451:ILE:HD13	1:E:451:ILE:HA	1.89	0.43
1:A:235:PHE:HA	1:A:243:THR:O	2.19	0.42
1:F:95:ASN:HD22	1:F:187:TRP:HB2	1.84	0.42
1:F:291:LEU:HD23	1:F:291:LEU:HA	1.87	0.42
1:F:493:ASP:OD2	1:F:493:ASP:N	2.52	0.42
1:B:235:PHE:HA	1:B:243:THR:O	2.19	0.42
1:D:226:LYS:HB3	1:D:226:LYS:HE2	1.51	0.42
1:D:235:PHE:HA	1:D:243:THR:O	2.19	0.42
1:D:358:LEU:HD12	1:D:358:LEU:HA	1.84	0.42
1:E:290:SER:O	1:E:294:VAL:HB	2.19	0.42
1:F:99:ILE:HG23	1:F:219:ILE:HD11	2.01	0.42
1:F:235:PHE:HA	1:F:243:THR:O	2.19	0.42
1:B:324:GLN:OE1	1:E:287:ASN:HB2	2.19	0.42
1:E:441:LEU:O	1:E:444:SER:OG	2.36	0.42
1:C:261:MET:HE3	1:C:261:MET:HB3	1.90	0.42
1:C:441:LEU:O	1:C:444:SER:OG	2.36	0.42
1:D:490:LYS:O	1:D:494:ILE:HG13	2.18	0.42
1:E:58:GLN:O	1:E:465:TYR:OH	2.31	0.42
1:E:127:ASP:OD1	1:E:127:ASP:N	2.53	0.42
1:A:451:ILE:HD13	1:A:451:ILE:HA	1.89	0.42
1:A:493:ASP:OD2	1:A:493:ASP:N	2.52	0.42
1:A:95:ASN:HD22	1:A:187:TRP:HB2	1.84	0.42
1:B:75:ARG:HE	1:B:75:ARG:HB3	1.57	0.42
1:C:58:GLN:O	1:C:465:TYR:OH	2.31	0.42
1:C:503:MET:HB3	1:C:503:MET:HE2	1.76	0.42
1:E:24:LYS:HB2	1:E:24:LYS:HE3	1.86	0.42
1:E:235:PHE:HA	1:E:243:THR:O	2.19	0.42
1:A:99:ILE:HG23	1:A:219:ILE:HD11	2.01	0.42
1:A:127:ASP:OD1	1:A:127:ASP:N	2.53	0.42
1:A:441:LEU:O	1:A:444:SER:OG	2.36	0.42
1:D:468:ASP:OD1	1:D:487:TYR:OH	2.31	0.42

Continued on next page...

Continued from previous page...

Atom-1	Atom-2	Interatomic distance (Å)	Clash overlap (Å)
1:E:503:MET:HB3	1:E:503:MET:HE2	1.76	0.42
1:F:127:ASP:OD1	1:F:127:ASP:N	2.53	0.42
1:F:450:LYS:HB3	1:F:450:LYS:HE3	1.86	0.42
1:B:461:LEU:HD13	1:B:461:LEU:HA	1.93	0.41
1:E:490:LYS:HA	1:E:490:LYS:HD3	1.91	0.41
1:F:358:LEU:O	1:F:362:SER:OG	2.31	0.41
1:C:127:ASP:OD1	1:C:130:THR:OG1	2.28	0.41
1:C:455:VAL:HG21	1:C:477:ARG:HH11	1.85	0.41
1:A:291:LEU:HD23	1:A:291:LEU:HA	1.87	0.41
1:D:127:ASP:OD1	1:D:127:ASP:N	2.53	0.41
1:E:99:ILE:HG23	1:E:219:ILE:HD11	2.01	0.41
1:E:358:LEU:HD12	1:E:358:LEU:HA	1.84	0.41
1:C:397:MET:HE3	1:C:397:MET:HB3	1.95	0.41
1:D:261:MET:HE3	1:D:261:MET:HB3	1.90	0.41
1:C:127:ASP:OD1	1:C:127:ASP:N	2.53	0.41
1:D:157:ILE:HG12	1:D:268:LEU:HD21	2.03	0.41
1:B:99:ILE:HG23	1:B:219:ILE:HD11	2.01	0.41
1:E:71:ASN:OD1	1:E:71:ASN:N	2.38	0.41
1:B:68:THR:HG22	1:B:72:ASN:HA	2.03	0.41
1:C:99:ILE:HG23	1:C:219:ILE:HD11	2.01	0.41
1:F:95:ASN:OD1	1:F:95:ASN:N	2.54	0.41
1:B:127:ASP:OD1	1:B:127:ASP:N	2.53	0.41
1:D:68:THR:HG22	1:D:72:ASN:HA	2.03	0.41
1:E:83:LYS:HZ2	1:E:83:LYS:HG3	1.72	0.41
1:E:361:LEU:HD23	1:E:361:LEU:HA	1.90	0.41
1:F:157:ILE:HG12	1:F:268:LEU:HD21	2.03	0.41
1:A:157:ILE:HG12	1:A:268:LEU:HD21	2.03	0.41
1:A:455:VAL:HG21	1:A:477:ARG:HH11	1.85	0.41
1:B:45:GLU:OE1	1:B:90:LYS:NZ	2.39	0.41
1:B:455:VAL:HG21	1:B:477:ARG:HH11	1.85	0.41
1:D:149:ASP:O	1:D:271:ASN:N	2.40	0.41
1:D:287:ASN:HB2	1:E:324:GLN:OE1	2.21	0.41
1:D:503:MET:HE2	1:D:503:MET:HB3	1.76	0.41
1:E:19:TYR:OH	1:E:80:ILE:O	2.25	0.41
1:E:95:ASN:HD22	1:E:187:TRP:HB2	1.84	0.41
1:E:455:VAL:HG21	1:E:477:ARG:HH11	1.85	0.41
1:F:68:THR:HG22	1:F:72:ASN:HA	2.03	0.41
1:C:68:THR:HG22	1:C:72:ASN:HA	2.03	0.40
1:E:143:ARG:HA	1:E:143:ARG:HD3	1.91	0.40
1:C:6:GLU:OE2	1:C:96:TRP:NE1	2.51	0.40
1:D:95:ASN:OD1	1:D:95:ASN:N	2.54	0.40

Continued on next page...

Continued from previous page...

Atom-1	Atom-2	Interatomic distance (Å)	Clash overlap (Å)
1:E:226:LYS:HE2	1:E:226:LYS:HB3	1.51	0.40
1:F:455:VAL:HG21	1:F:477:ARG:HH11	1.85	0.40
1:A:312:SER:HA	1:A:350:THR:HG23	2.04	0.40
1:C:361:LEU:HD23	1:C:361:LEU:HA	1.90	0.40
1:D:38:THR:HG23	1:D:500:VAL:HA	2.03	0.40
1:E:312:SER:HA	1:E:350:THR:HG23	2.04	0.40
1:F:38:THR:HG23	1:F:500:VAL:HA	2.04	0.40
1:F:451:ILE:HD13	1:F:451:ILE:HA	1.89	0.40
1:A:68:THR:HG22	1:A:72:ASN:HA	2.03	0.40
1:D:24:LYS:HB2	1:D:24:LYS:HE3	1.86	0.40
1:E:127:ASP:OD1	1:E:130:THR:OG1	2.28	0.40
1:E:304:ASP:OD1	1:E:304:ASP:N	2.55	0.40
1:B:31:PRO:HA	1:B:32:PRO:HD3	1.98	0.40
1:D:455:VAL:HG21	1:D:477:ARG:HH11	1.85	0.40
1:F:143:ARG:HA	1:F:143:ARG:HD3	1.91	0.40

There are no symmetry-related clashes.

5.3 Torsion angles

5.3.1 Protein backbone

In the following table, the Percentiles column shows the percent Ramachandran outliers of the chain as a percentile score with respect to all PDB entries followed by that with respect to all EM entries.

The Analysed column shows the number of residues for which the backbone conformation was analysed, and the total number of residues.

Mol	Chain	Analysed	Favoured	Allowed	Outliers	Percentiles	
1	A	490/549 (89%)	475 (97%)	14 (3%)	1 (0%)	44	68
1	B	490/549 (89%)	475 (97%)	14 (3%)	1 (0%)	44	68
1	C	490/549 (89%)	475 (97%)	14 (3%)	1 (0%)	44	68
1	D	490/549 (89%)	475 (97%)	14 (3%)	1 (0%)	44	68
1	E	490/549 (89%)	475 (97%)	14 (3%)	1 (0%)	44	68
1	F	490/549 (89%)	475 (97%)	14 (3%)	1 (0%)	44	68
All	All	2940/3294 (89%)	2850 (97%)	84 (3%)	6 (0%)	45	68

All (6) Ramachandran outliers are listed below:

Mol	Chain	Res	Type
1	A	239	ILE
1	B	239	ILE
1	C	239	ILE
1	D	239	ILE
1	E	239	ILE
1	F	239	ILE

5.3.2 Protein sidechains ⓘ

In the following table, the Percentiles column shows the percent sidechain outliers of the chain as a percentile score with respect to all PDB entries followed by that with respect to all EM entries.

The Analysed column shows the number of residues for which the sidechain conformation was analysed, and the total number of residues.

Mol	Chain	Analysed	Rotameric	Outliers	Percentiles	
1	A	450/500 (90%)	416 (92%)	34 (8%)	11	27
1	B	450/500 (90%)	417 (93%)	33 (7%)	11	29
1	C	450/500 (90%)	417 (93%)	33 (7%)	11	29
1	D	450/500 (90%)	417 (93%)	33 (7%)	11	29
1	E	450/500 (90%)	417 (93%)	33 (7%)	11	29
1	F	450/500 (90%)	418 (93%)	32 (7%)	12	30
All	All	2700/3000 (90%)	2502 (93%)	198 (7%)	14	29

All (198) residues with a non-rotameric sidechain are listed below:

Mol	Chain	Res	Type
1	A	23	GLN
1	A	28	SER
1	A	56	SER
1	A	68	THR
1	A	71	ASN
1	A	106	GLU
1	A	133	ILE
1	A	140	PHE
1	A	149	ASP
1	A	157	ILE
1	A	159	SER
1	A	167	ILE
1	A	196	ARG

Continued on next page...

Continued from previous page...

Mol	Chain	Res	Type
1	A	206	VAL
1	A	226	LYS
1	A	248	THR
1	A	249	HIS
1	A	251	ASP
1	A	293	ASN
1	A	294	VAL
1	A	296	SER
1	A	319	LEU
1	A	335	LEU
1	A	345	ASN
1	A	350	THR
1	A	358	LEU
1	A	376	ILE
1	A	403	CYS
1	A	419	ILE
1	A	420	ASP
1	A	421	ILE
1	A	425	VAL
1	A	426	ILE
1	A	461	LEU
1	B	23	GLN
1	B	28	SER
1	B	56	SER
1	B	68	THR
1	B	71	ASN
1	B	106	GLU
1	B	133	ILE
1	B	140	PHE
1	B	149	ASP
1	B	157	ILE
1	B	159	SER
1	B	167	ILE
1	B	196	ARG
1	B	206	VAL
1	B	226	LYS
1	B	248	THR
1	B	249	HIS
1	B	251	ASP
1	B	293	ASN
1	B	294	VAL
1	B	296	SER

Continued on next page...

Continued from previous page...

Mol	Chain	Res	Type
1	B	319	LEU
1	B	335	LEU
1	B	345	ASN
1	B	350	THR
1	B	358	LEU
1	B	376	ILE
1	B	403	CYS
1	B	419	ILE
1	B	421	ILE
1	B	425	VAL
1	B	426	ILE
1	B	461	LEU
1	C	23	GLN
1	C	28	SER
1	C	56	SER
1	C	68	THR
1	C	71	ASN
1	C	106	GLU
1	C	133	ILE
1	C	140	PHE
1	C	149	ASP
1	C	157	ILE
1	C	159	SER
1	C	167	ILE
1	C	196	ARG
1	C	206	VAL
1	C	226	LYS
1	C	248	THR
1	C	249	HIS
1	C	251	ASP
1	C	293	ASN
1	C	294	VAL
1	C	296	SER
1	C	319	LEU
1	C	335	LEU
1	C	345	ASN
1	C	350	THR
1	C	358	LEU
1	C	376	ILE
1	C	403	CYS
1	C	419	ILE
1	C	421	ILE

Continued on next page...

Continued from previous page...

Mol	Chain	Res	Type
1	C	425	VAL
1	C	426	ILE
1	C	461	LEU
1	D	23	GLN
1	D	28	SER
1	D	56	SER
1	D	68	THR
1	D	71	ASN
1	D	106	GLU
1	D	133	ILE
1	D	140	PHE
1	D	149	ASP
1	D	157	ILE
1	D	159	SER
1	D	167	ILE
1	D	196	ARG
1	D	206	VAL
1	D	226	LYS
1	D	248	THR
1	D	249	HIS
1	D	251	ASP
1	D	293	ASN
1	D	294	VAL
1	D	296	SER
1	D	319	LEU
1	D	335	LEU
1	D	345	ASN
1	D	350	THR
1	D	358	LEU
1	D	376	ILE
1	D	403	CYS
1	D	419	ILE
1	D	421	ILE
1	D	425	VAL
1	D	426	ILE
1	D	461	LEU
1	E	23	GLN
1	E	28	SER
1	E	56	SER
1	E	68	THR
1	E	71	ASN
1	E	106	GLU

Continued on next page...

Continued from previous page...

Mol	Chain	Res	Type
1	E	133	ILE
1	E	140	PHE
1	E	149	ASP
1	E	157	ILE
1	E	159	SER
1	E	167	ILE
1	E	196	ARG
1	E	206	VAL
1	E	226	LYS
1	E	248	THR
1	E	249	HIS
1	E	251	ASP
1	E	293	ASN
1	E	294	VAL
1	E	296	SER
1	E	319	LEU
1	E	335	LEU
1	E	345	ASN
1	E	350	THR
1	E	358	LEU
1	E	376	ILE
1	E	403	CYS
1	E	419	ILE
1	E	421	ILE
1	E	425	VAL
1	E	426	ILE
1	E	461	LEU
1	F	23	GLN
1	F	28	SER
1	F	56	SER
1	F	68	THR
1	F	71	ASN
1	F	106	GLU
1	F	133	ILE
1	F	140	PHE
1	F	149	ASP
1	F	157	ILE
1	F	159	SER
1	F	167	ILE
1	F	206	VAL
1	F	226	LYS
1	F	248	THR

Continued on next page...

Continued from previous page...

Mol	Chain	Res	Type
1	F	249	HIS
1	F	251	ASP
1	F	293	ASN
1	F	294	VAL
1	F	296	SER
1	F	319	LEU
1	F	335	LEU
1	F	345	ASN
1	F	350	THR
1	F	358	LEU
1	F	376	ILE
1	F	403	CYS
1	F	419	ILE
1	F	421	ILE
1	F	425	VAL
1	F	426	ILE
1	F	461	LEU

Sometimes sidechains can be flipped to improve hydrogen bonding and reduce clashes. All (43) such sidechains are listed below:

Mol	Chain	Res	Type
1	A	95	ASN
1	A	137	ASN
1	A	295	ASN
1	A	324	GLN
1	A	326	ASN
1	A	378	HIS
1	A	418	ASN
1	B	95	ASN
1	B	137	ASN
1	B	305	GLN
1	B	324	GLN
1	B	326	ASN
1	B	378	HIS
1	C	95	ASN
1	C	137	ASN
1	C	295	ASN
1	C	305	GLN
1	C	324	GLN
1	C	326	ASN
1	C	378	HIS
1	D	95	ASN

Continued on next page...

Continued from previous page...

Mol	Chain	Res	Type
1	D	137	ASN
1	D	195	GLN
1	D	271	ASN
1	D	295	ASN
1	D	305	GLN
1	D	324	GLN
1	D	326	ASN
1	D	378	HIS
1	E	95	ASN
1	E	137	ASN
1	E	271	ASN
1	E	295	ASN
1	E	324	GLN
1	E	326	ASN
1	E	378	HIS
1	F	95	ASN
1	F	137	ASN
1	F	195	GLN
1	F	305	GLN
1	F	324	GLN
1	F	326	ASN
1	F	378	HIS

5.3.3 RNA [i](#)

There are no RNA molecules in this entry.

5.4 Non-standard residues in protein, DNA, RNA chains [i](#)

There are no non-standard protein/DNA/RNA residues in this entry.

5.5 Carbohydrates [i](#)

There are no oligosaccharides in this entry.

5.6 Ligand geometry [i](#)

There are no ligands in this entry.

5.7 Other polymers [i](#)

There are no such residues in this entry.

5.8 Polymer linkage issues [i](#)

There are no chain breaks in this entry.

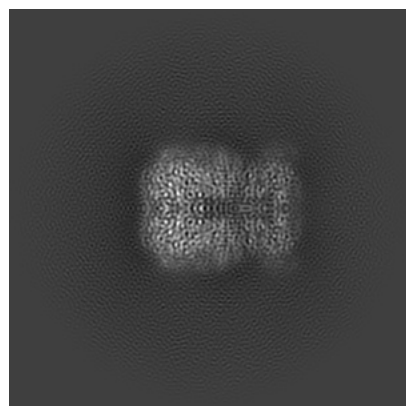
6 Map visualisation [i](#)

This section contains visualisations of the EMDB entry EMD-64992. These allow visual inspection of the internal detail of the map and identification of artifacts.

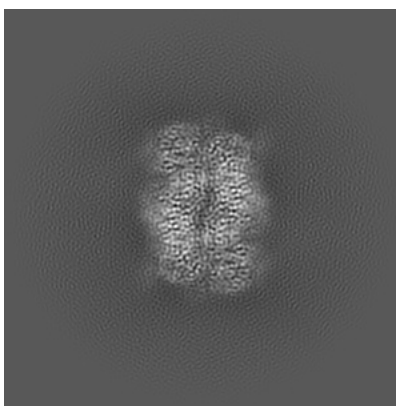
Images derived from a raw map, generated by summing the deposited half-maps, are presented below the corresponding image components of the primary map to allow further visual inspection and comparison with those of the primary map.

6.1 Orthogonal projections [i](#)

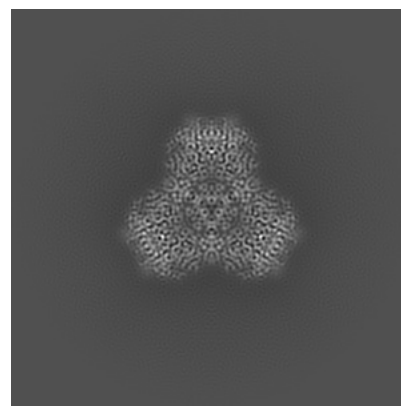
6.1.1 Primary map



X

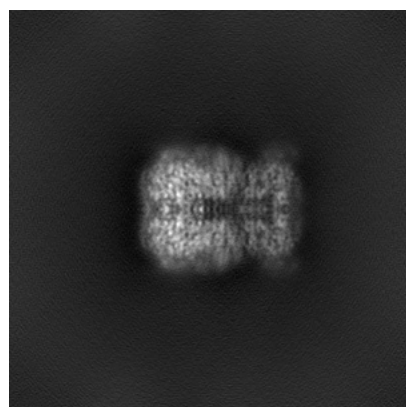


Y

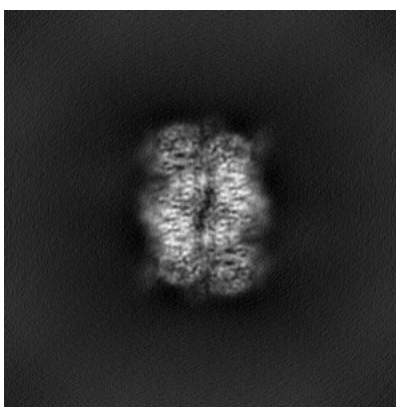


Z

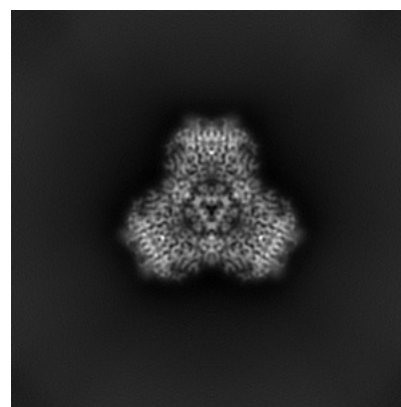
6.1.2 Raw map



X



Y

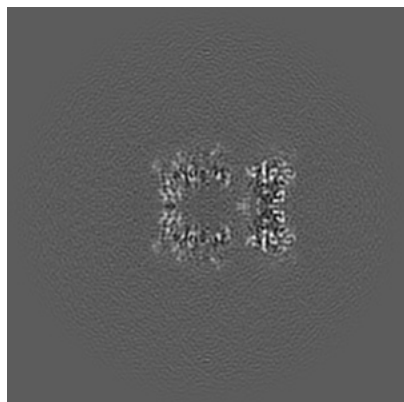


Z

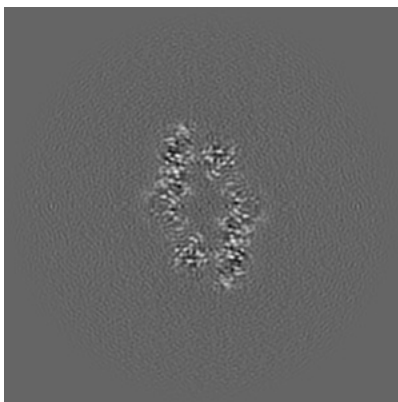
The images above show the map projected in three orthogonal directions.

6.2 Central slices [i](#)

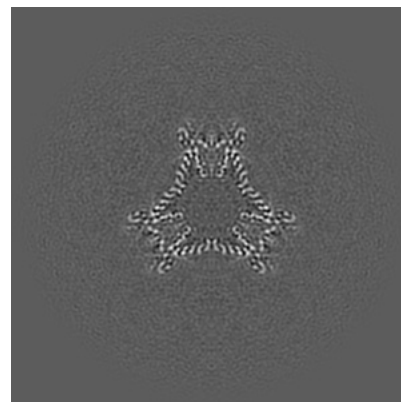
6.2.1 Primary map



X Index: 150

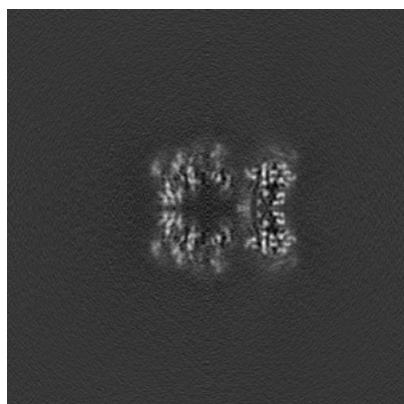


Y Index: 150

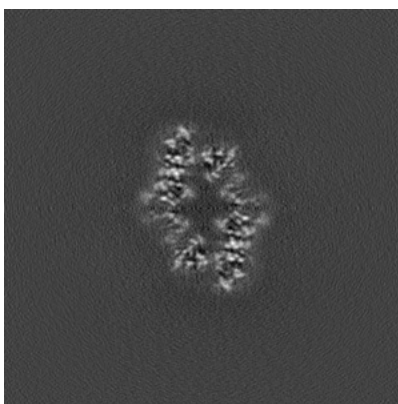


Z Index: 150

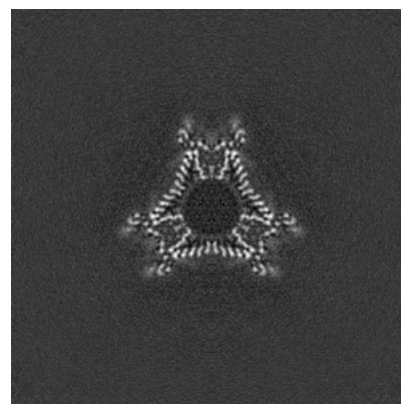
6.2.2 Raw map



X Index: 150



Y Index: 150

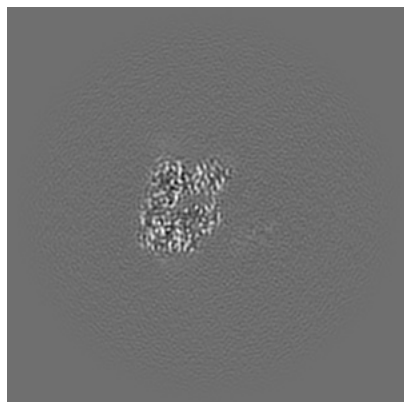


Z Index: 150

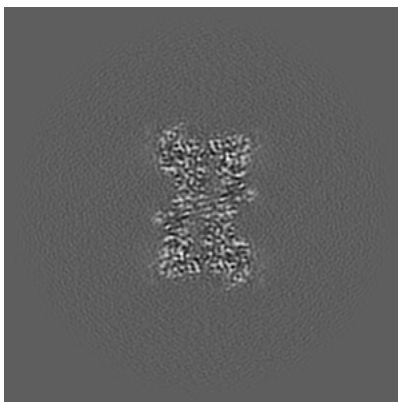
The images above show central slices of the map in three orthogonal directions.

6.3 Largest variance slices [i](#)

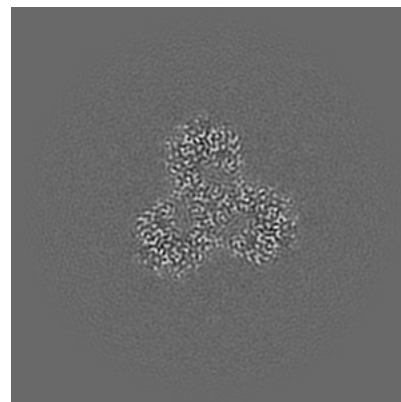
6.3.1 Primary map



X Index: 113

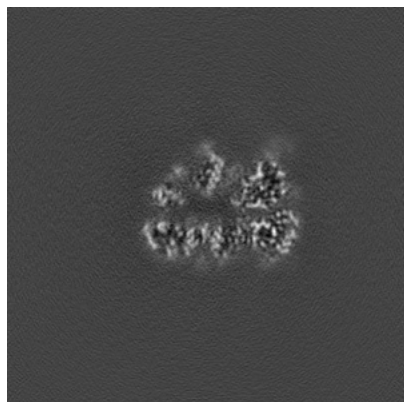


Y Index: 121

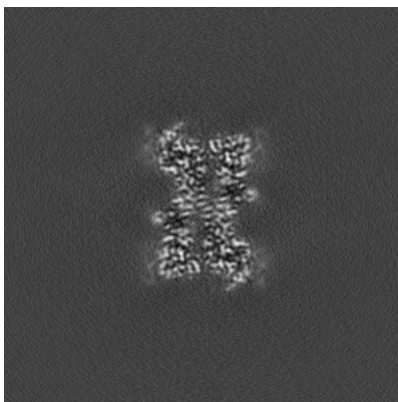


Z Index: 130

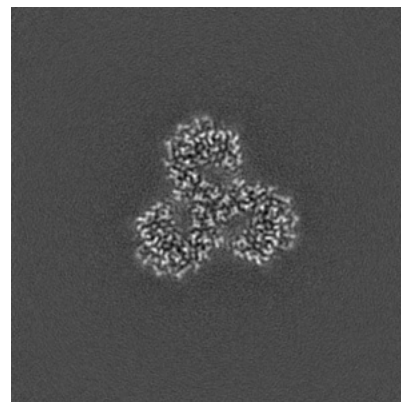
6.3.2 Raw map



X Index: 139



Y Index: 121

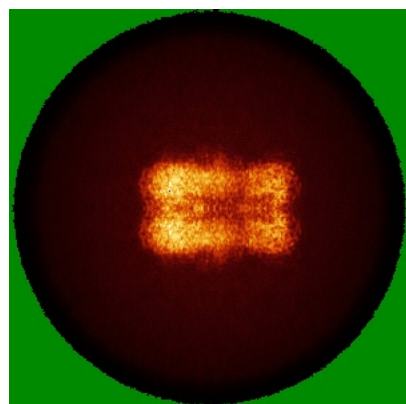


Z Index: 129

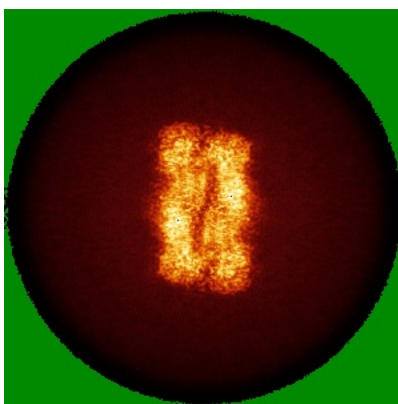
The images above show the largest variance slices of the map in three orthogonal directions.

6.4 Orthogonal standard-deviation projections (False-color) [i](#)

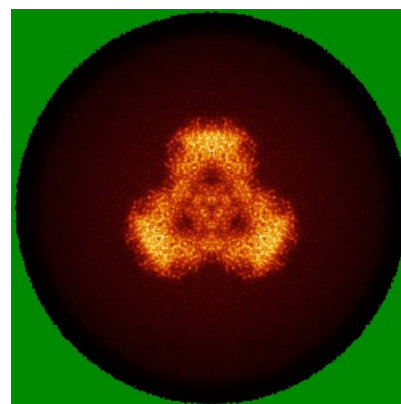
6.4.1 Primary map



X

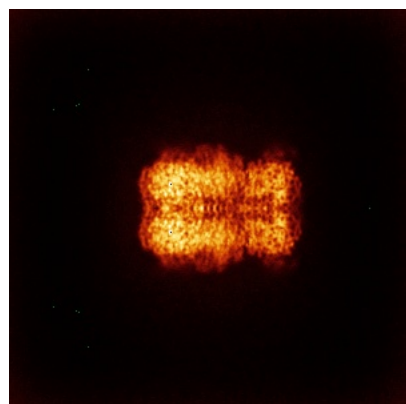


Y

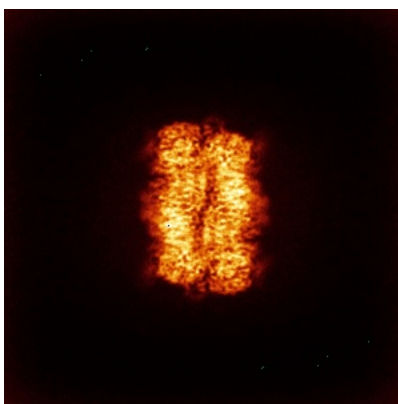


Z

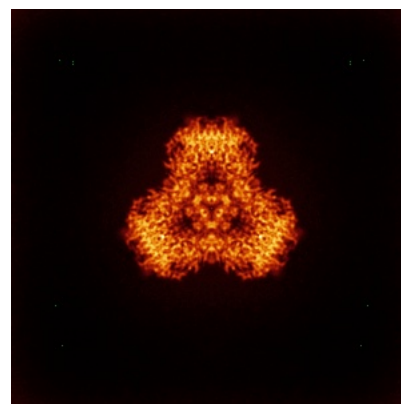
6.4.2 Raw map



X



Y

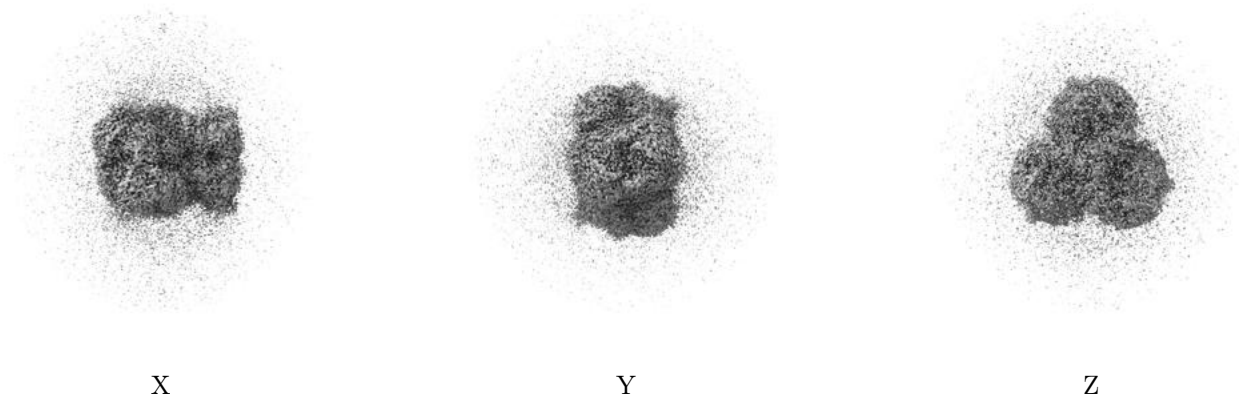


Z

The images above show the map standard deviation projections with false color in three orthogonal directions. Minimum values are shown in green, max in blue, and dark to light orange shades represent small to large values respectively.

6.5 Orthogonal surface views [i](#)

6.5.1 Primary map



The images above show the 3D surface view of the map at the recommended contour level 0.13. These images, in conjunction with the slice images, may facilitate assessment of whether an appropriate contour level has been provided.

6.5.2 Raw map



These images show the 3D surface of the raw map. The raw map's contour level was selected so that its surface encloses the same volume as the primary map does at its recommended contour level.

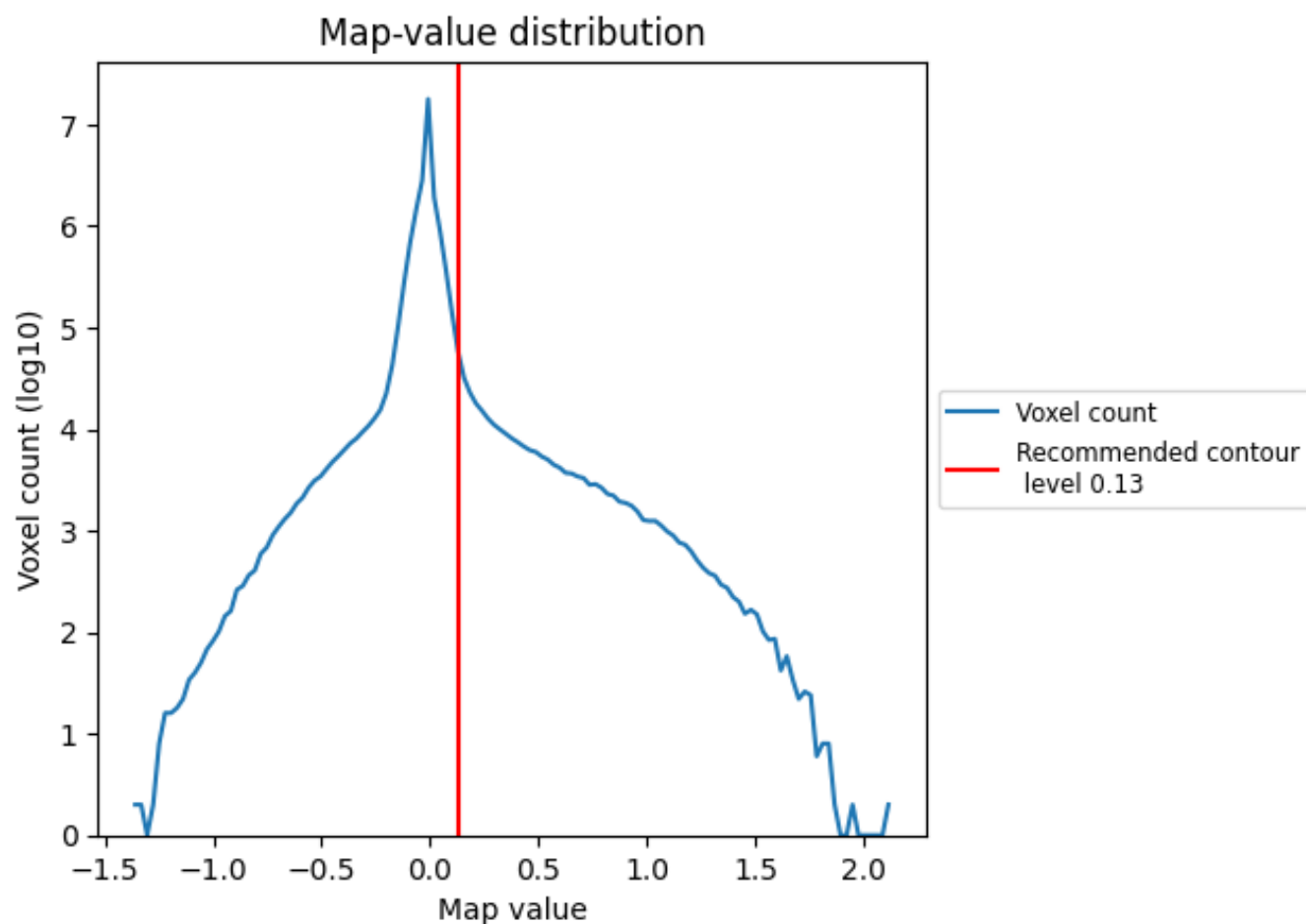
6.6 Mask visualisation [i](#)

This section was not generated. No masks/segmentation were deposited.

7 Map analysis [i](#)

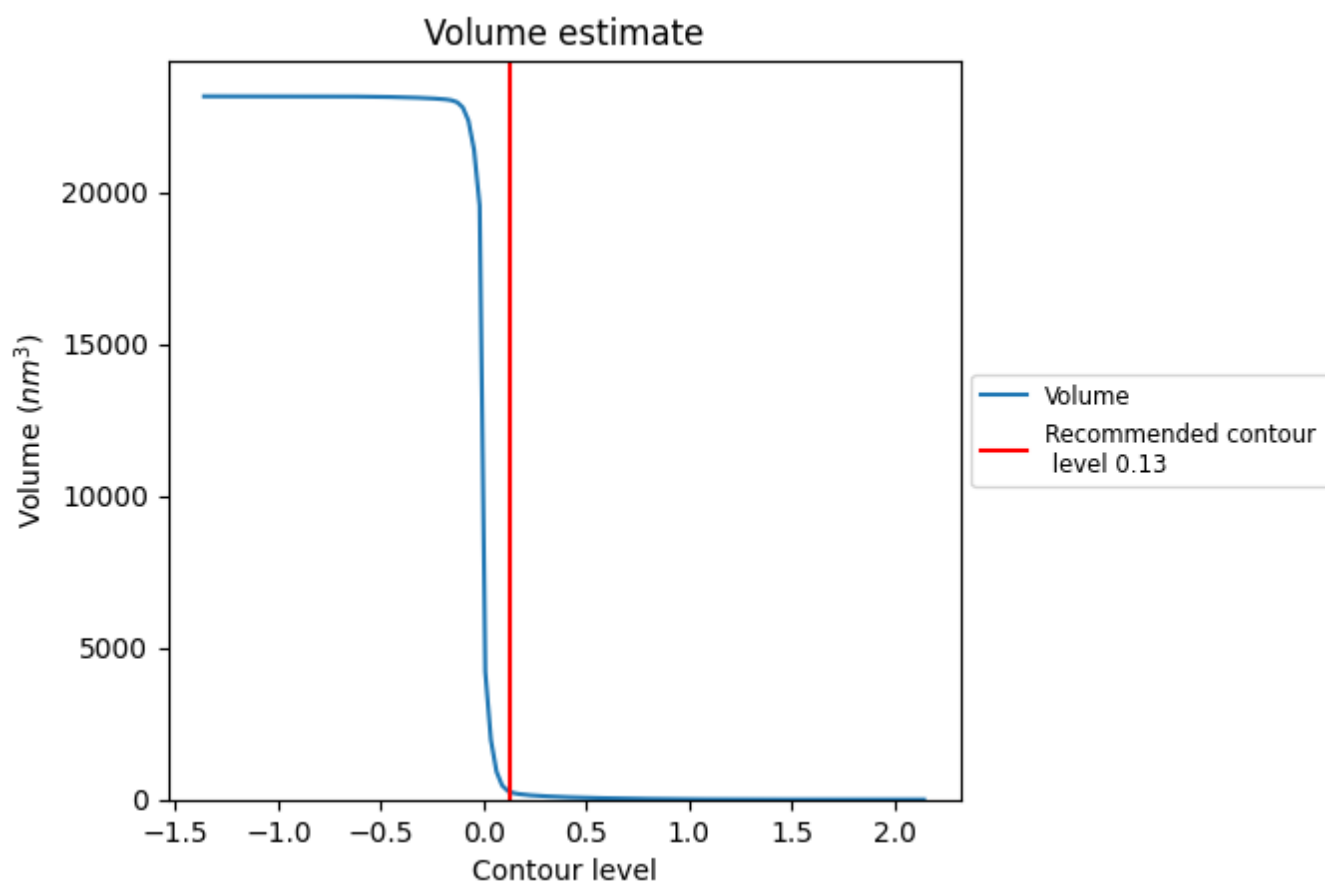
This section contains the results of statistical analysis of the map.

7.1 Map-value distribution [i](#)



The map-value distribution is plotted in 128 intervals along the x-axis. The y-axis is logarithmic. A spike in this graph at zero usually indicates that the volume has been masked.

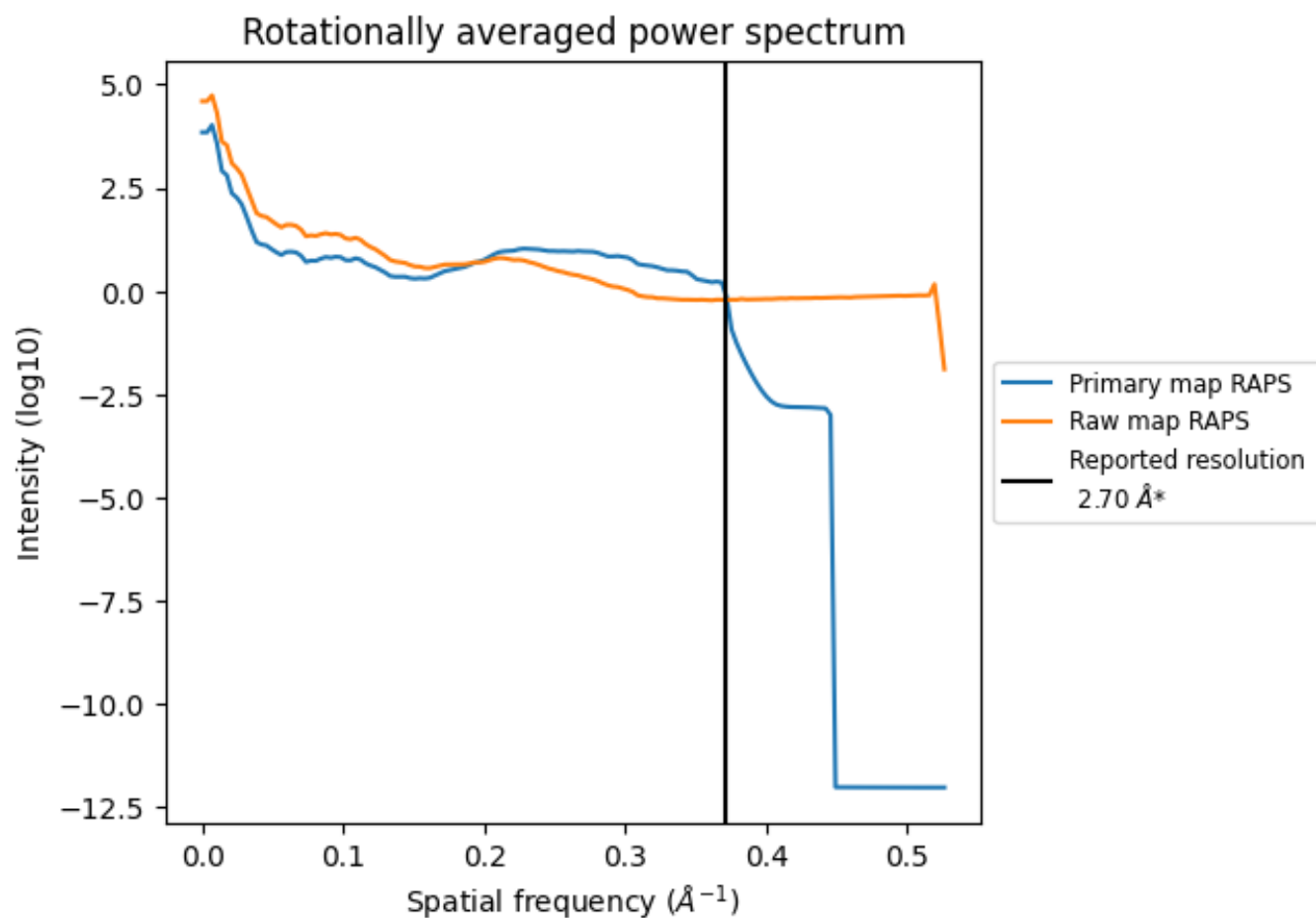
7.2 Volume estimate [i](#)



The volume at the recommended contour level is 254 nm³; this corresponds to an approximate mass of 229 kDa.

The volume estimate graph shows how the enclosed volume varies with the contour level. The recommended contour level is shown as a vertical line and the intersection between the line and the curve gives the volume of the enclosed surface at the given level.

7.3 Rotationally averaged power spectrum ⓘ

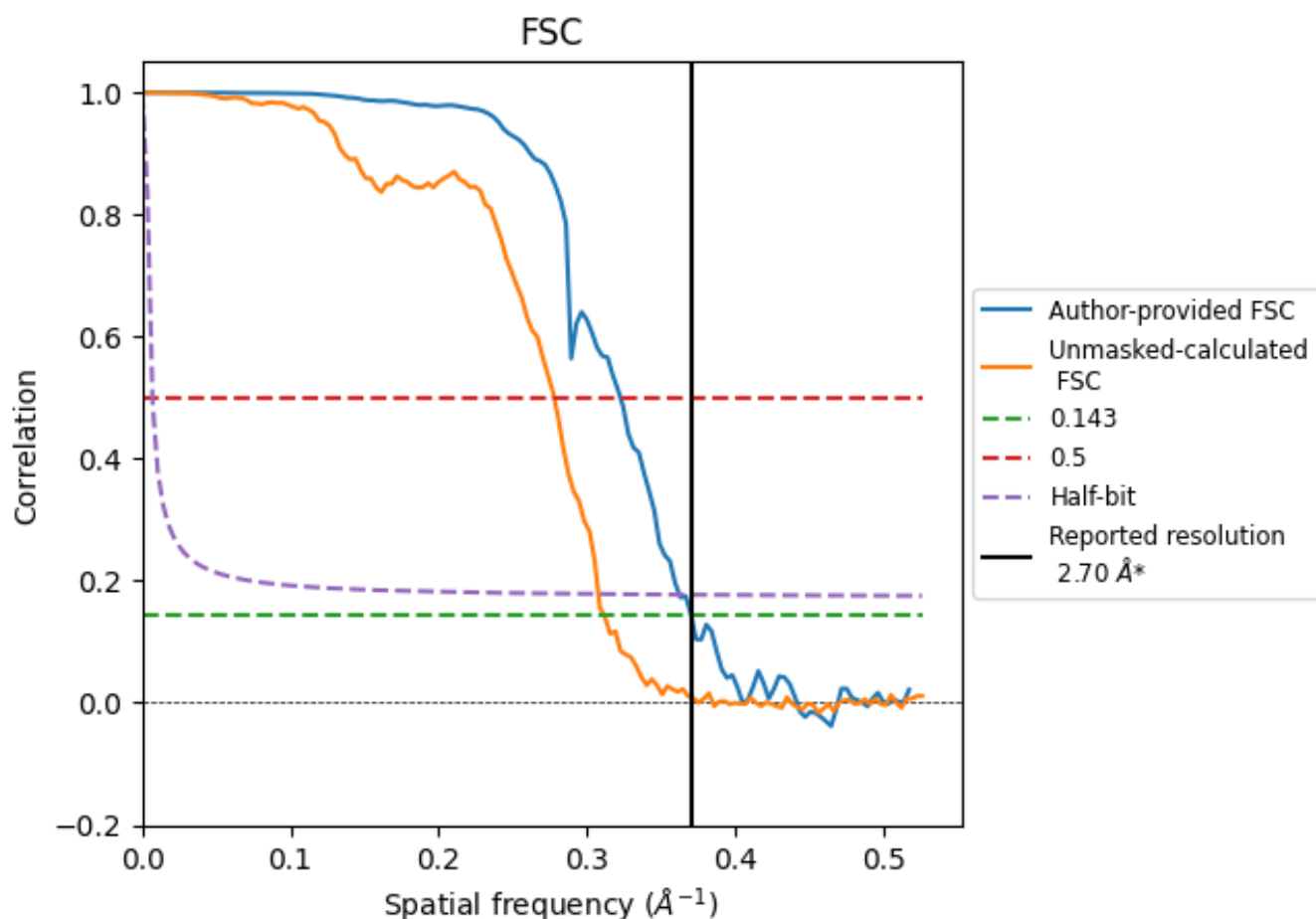


*Reported resolution corresponds to spatial frequency of 0.370 \AA^{-1}

8 Fourier-Shell correlation [i](#)

Fourier-Shell Correlation (FSC) is the most commonly used method to estimate the resolution of single-particle and subtomogram-averaged maps. The shape of the curve depends on the imposed symmetry, mask and whether or not the two 3D reconstructions used were processed from a common reference. The reported resolution is shown as a black line. A curve is displayed for the half-bit criterion in addition to lines showing the 0.143 gold standard cut-off and 0.5 cut-off.

8.1 FSC [i](#)



*Reported resolution corresponds to spatial frequency of 0.370 \AA^{-1}

8.2 Resolution estimates [i](#)

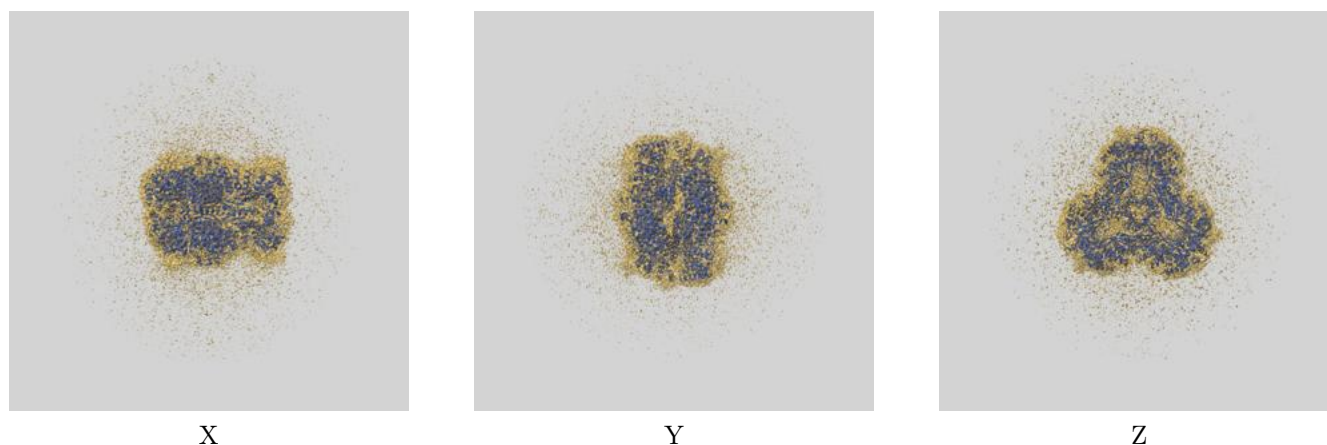
Resolution estimate (Å)	Estimation criterion (FSC cut-off)		
	0.143	0.5	Half-bit
Reported by author	2.70	-	-
Author-provided FSC curve	2.70	3.10	2.76
Unmasked-calculated*	3.21	3.60	3.25

*Resolution estimate based on FSC curve calculated by comparison of deposited half-maps. The value from deposited half-maps intersecting FSC 0.143 CUT-OFF 3.21 differs from the reported value 2.7 by more than 10 %

9 Map-model fit [i](#)

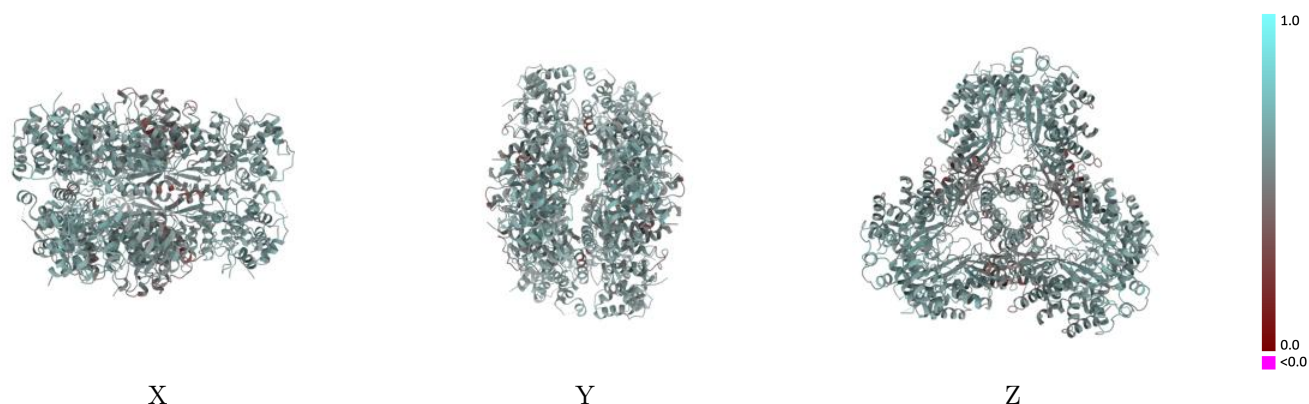
This section contains information regarding the fit between EMDB map EMD-64992 and PDB model 9VDV. Per-residue inclusion information can be found in [section 3](#) on [page 7](#).

9.1 Map-model overlay [i](#)



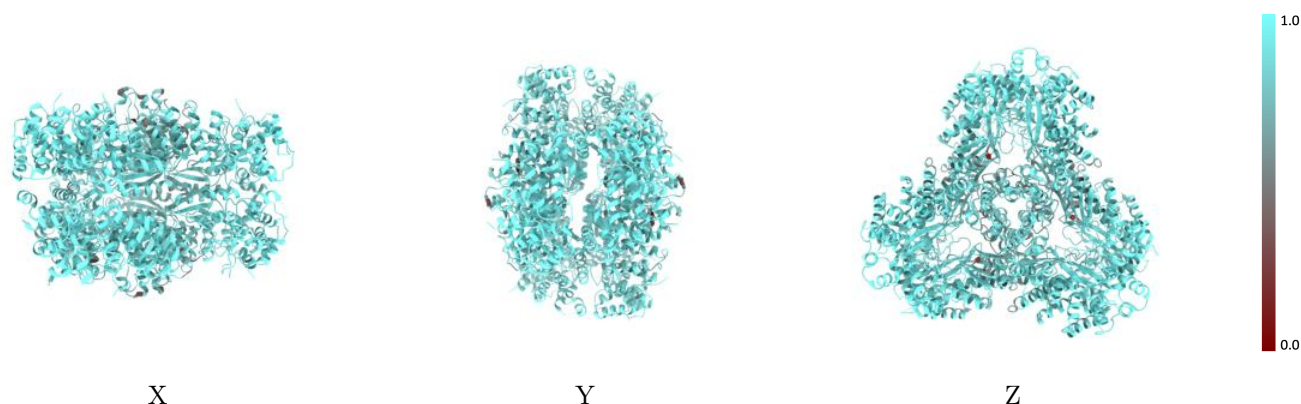
The images above show the 3D surface view of the map at the recommended contour level 0.13 at 50% transparency in yellow overlaid with a ribbon representation of the model coloured in blue. These images allow for the visual assessment of the quality of fit between the atomic model and the map.

9.2 Q-score mapped to coordinate model [i](#)



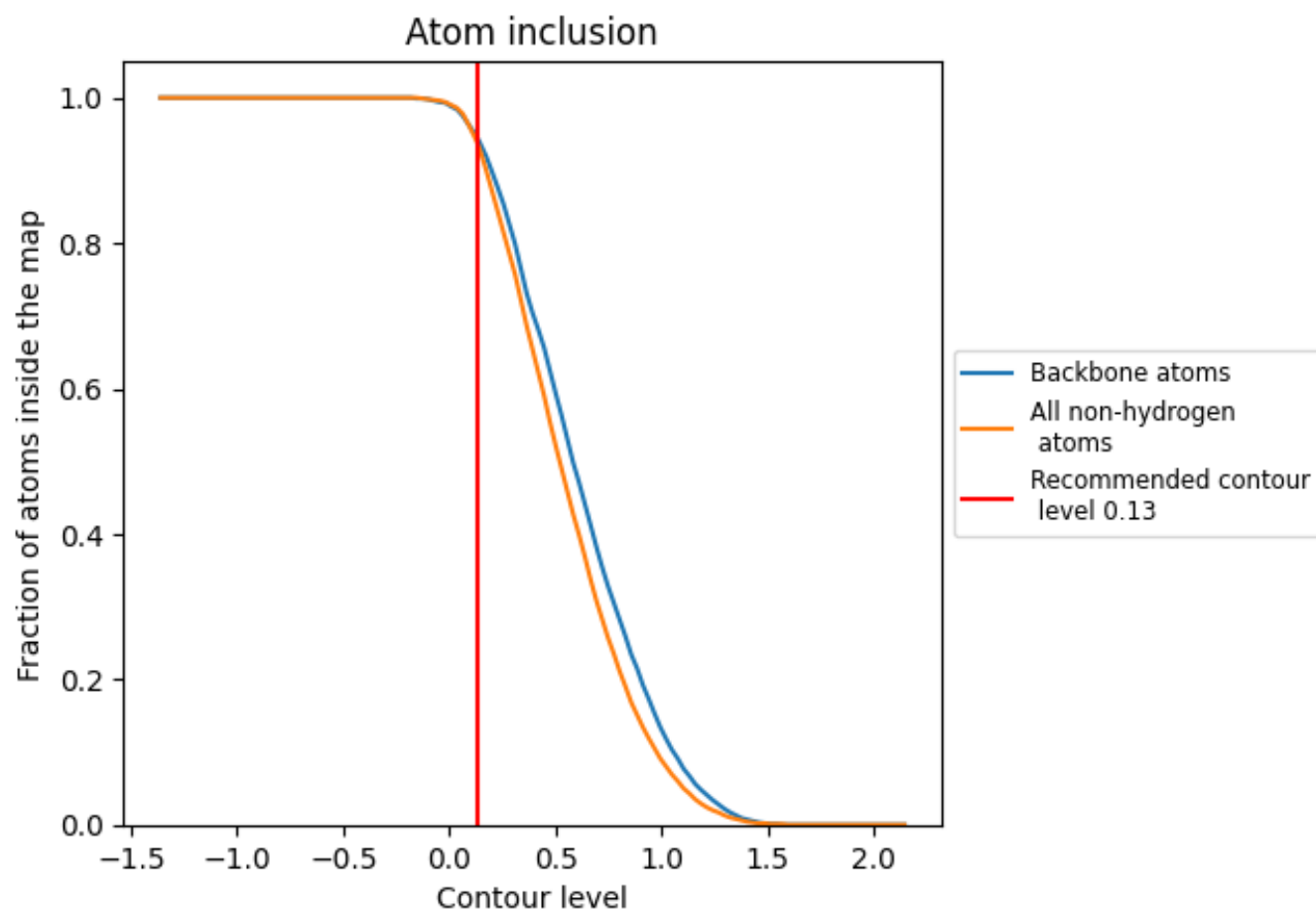
The images above show the model with each residue coloured according to its Q-score. This shows their resolvability in the map with higher Q-score values reflecting better resolvability. Please note: Q-score is calculating the resolvability of atoms, and thus high values are only expected at resolutions at which atoms can be resolved. Low Q-score values may therefore be expected for many entries.

9.3 Atom inclusion mapped to coordinate model [i](#)



The images above show the model with each residue coloured according to its atom inclusion. This shows to what extent they are inside the map at the recommended contour level (0.13).

9.4 Atom inclusion [i](#)



At the recommended contour level, 95% of all backbone atoms, 94% of all non-hydrogen atoms, are inside the map.

9.5 Map-model fit summary ⓘ

The table lists the average atom inclusion at the recommended contour level (0.13) and Q-score for the entire model and for each chain.

Chain	Atom inclusion	Q-score
All	<div><div></div></div> 0.9390	<div><div></div></div> 0.5660
A	<div><div></div></div> 0.9420	<div><div></div></div> 0.5670
B	<div><div></div></div> 0.9400	<div><div></div></div> 0.5680
C	<div><div></div></div> 0.9390	<div><div></div></div> 0.5650
D	<div><div></div></div> 0.9390	<div><div></div></div> 0.5650
E	<div><div></div></div> 0.9380	<div><div></div></div> 0.5650
F	<div><div></div></div> 0.9390	<div><div></div></div> 0.5650

