



Full wwPDB X-ray Structure Validation Report ⓘ

Nov 20, 2025 – 06:11 pm GMT

PDB ID : 9SL8 / pdb_00009sl8
Title : Structure of recombinant human butyrylcholinesterase in complex with naphthalen-2-yl methyl((2S,3R)-2-(pyridin-3-ylmethyl)quinuclidin-3-yl)carbamate
Authors : Brazzolotto, X.; Mastnak-Sokolov, P.; Nachon, F.; Gobec, S.
Deposited on : 2025-09-03
Resolution : 2.52 Å(reported)

This is a Full wwPDB X-ray Structure Validation Report for a publicly released PDB entry.

We welcome your comments at validation@mail.wwpdb.org

A user guide is available at

<https://www.wwpdb.org/validation/2017/XrayValidationReportHelp>

with specific help available everywhere you see the ⓘ symbol.

The types of validation reports are described at

<http://www.wwpdb.org/validation/2017/FAQs#types>.

The following versions of software and data (see [references ⓘ](#)) were used in the production of this report:

MolProbity	:	4-5-2 with Phenix2.0
Mogul	:	1.8.4, CSD as541be (2020)
Xtriage (Phenix)	:	2.0
EDS	:	3.0
buster-report	:	1.1.7 (2018)
Percentile statistics	:	20231227.v01 (using entries in the PDB archive December 27th 2023)
CCP4	:	9.0.010 (Gargrove)
Density-Fitness	:	1.0.12
Ideal geometry (proteins)	:	Engh & Huber (2001)
Ideal geometry (DNA, RNA)	:	Parkinson et al. (1996)
Validation Pipeline (wwPDB-VP)	:	2.46

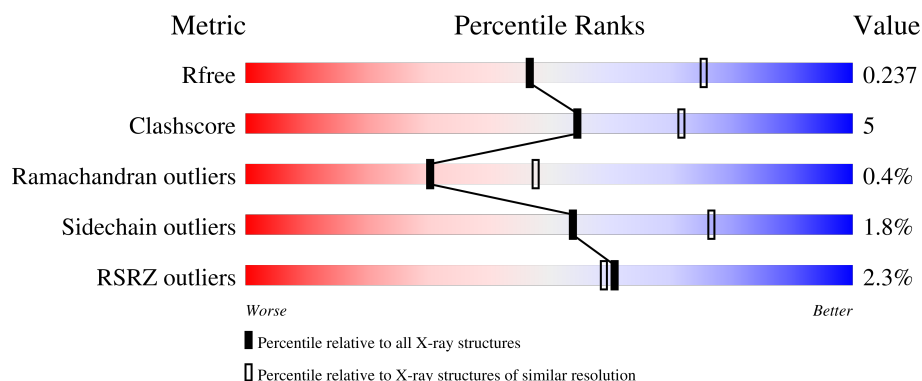
1 Overall quality at a glance

The following experimental techniques were used to determine the structure:

X-RAY DIFFRACTION

The reported resolution of this entry is 2.52 Å.

Percentile scores (ranging between 0-100) for global validation metrics of the entry are shown in the following graphic. The table shows the number of entries on which the scores are based.



Metric	Whole archive (#Entries)	Similar resolution (#Entries, resolution range(Å))
R_{free}	164625	6935 (2.54-2.50)
Clashscore	180529	7778 (2.54-2.50)
Ramachandran outliers	177936	7674 (2.54-2.50)
Sidechain outliers	177891	7676 (2.54-2.50)
RSRZ outliers	164620	6935 (2.54-2.50)

The table below summarises the geometric issues observed across the polymeric chains and their fit to the electron density. The red, orange, yellow and green segments of the lower bar indicate the fraction of residues that contain outliers for ≥ 3 , 2, 1 and 0 types of geometric quality criteria respectively. A grey segment represents the fraction of residues that are not modelled. The numeric value for each fraction is indicated below the corresponding segment, with a dot representing fractions $\leq 5\%$. The upper red bar (where present) indicates the fraction of residues that have poor fit to the electron density. The numeric value is given above the bar.

Mol	Chain	Length	Quality of chain
1	A	529	<div> <div>2%</div> <div>88%</div> <div>11%</div> <div>..</div> </div>
2	B	2	<div> <div>100%</div> </div>
3	C	3	<div> <div>33%</div> <div>67%</div> </div>
3	D	3	<div> <div>33%</div> <div>67%</div> </div>

2 Entry composition

There are 9 unique types of molecules in this entry. The entry contains 4571 atoms, of which 0 are hydrogens and 0 are deuteriums.

In the tables below, the ZeroOcc column contains the number of atoms modelled with zero occupancy, the AltConf column contains the number of residues with at least one atom in alternate conformation and the Trace column contains the number of residues modelled with at most 2 atoms.

- Molecule 1 is a protein called Cholinesterase.

Mol	Chain	Residues	Atoms					ZeroOcc	AltConf	Trace
			Total	C	N	O	S			
1	A	526	4232	2732	712	773	15	0	5	0

There are 4 discrepancies between the modelled and reference sequences:

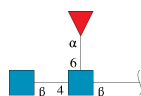
Chain	Residue	Modelled	Actual	Comment	Reference
A	17	GLN	ASN	engineered mutation	UNP P06276
A	455	GLN	ASN	engineered mutation	UNP P06276
A	481	GLN	ASN	engineered mutation	UNP P06276
A	486	GLN	ASN	engineered mutation	UNP P06276

- Molecule 2 is an oligosaccharide called alpha-L-fucopyranose-(1-6)-2-acetamido-2-deoxy-beta-D-glucopyranose.



Mol	Chain	Residues	Atoms				ZeroOcc	AltConf	Trace
			Total	C	N	O			
2	B	2	24	14	1	9	0	0	0

- Molecule 3 is an oligosaccharide called 2-acetamido-2-deoxy-beta-D-glucopyranose-(1-4)-[alpha-L-fucopyranose-(1-6)]2-acetamido-2-deoxy-beta-D-glucopyranose.



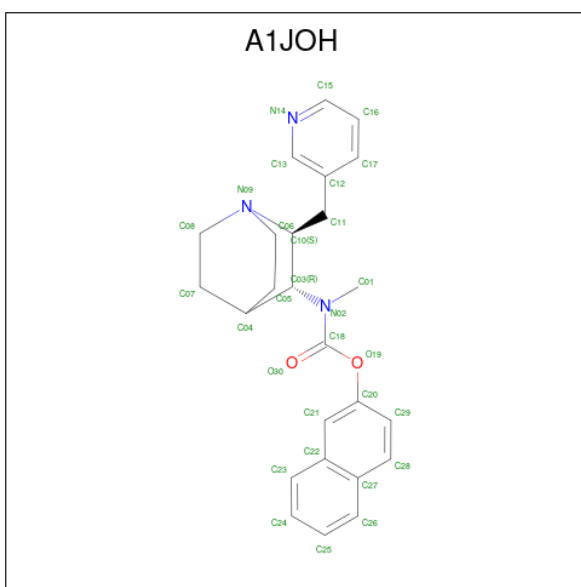
Mol	Chain	Residues	Atoms				ZeroOcc	AltConf	Trace
3	C	3	Total	C	N	O	0	0	0
			38	22	2	14			
3	D	3	Total	C	N	O	0	0	0
			38	22	2	14			

- Molecule 4 is 2-acetamido-2-deoxy-beta-D-glucopyranose (CCD ID: NAG) (formula: $C_8H_{15}NO_6$).



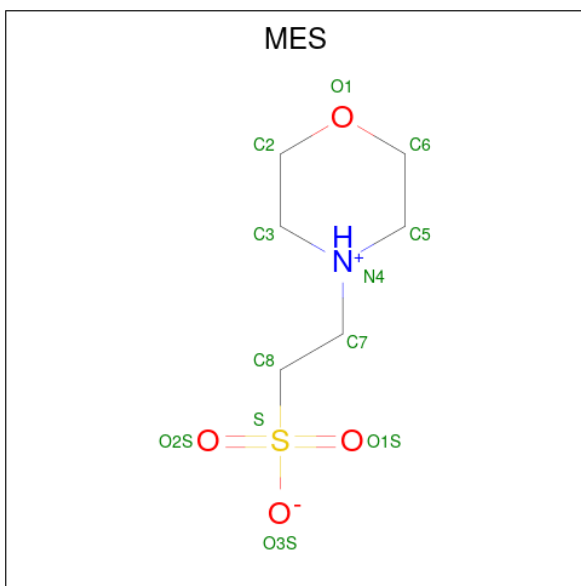
Mol	Chain	Residues	Atoms				ZeroOcc	AltConf
4	A	1	Total	C	N	O	0	0
			14	8	1	5		
4	A	1	Total	C	N	O	0	0
			14	8	1	5		
4	A	1	Total	C	N	O	0	0
			14	8	1	5		

- Molecule 5 is naphthalen-2-yl {N}-methyl- {N}-[(2 {S},3 {R})-2-(pyridin-3-ylmethyl)-1-azabicyclo[2.2.2]octan-3-yl]carbamate (CCD ID: A1JOH) (formula: $C_{25}H_{27}N_3O_2$) (labeled as "Ligand of Interest" by depositor).



Mol	Chain	Residues	Atoms				ZeroOcc	AltConf
5	A	1	Total	C	N	O	0	0
			30	25	3	2		

- Molecule 6 is 2-(N-MORPHOLINO)-ETHANESULFONIC ACID (CCD ID: MES) (formula: $C_6H_{13}NO_4S$).



Mol	Chain	Residues	Atoms					ZeroOcc	AltConf
6	A	1	Total	C	N	O	S	0	0
			12	6	1	4	1		

- Molecule 7 is SULFATE ION (CCD ID: SO4) (formula: O_4S).



Mol	Chain	Residues	Atoms			ZeroOcc	AltConf
7	A	1	Total	O	S	0	0
			5	4	1		
7	A	1	Total	O	S	0	0
			5	4	1		
7	A	1	Total	O	S	0	0
			5	4	1		
7	A	1	Total	O	S	0	0
			5	4	1		

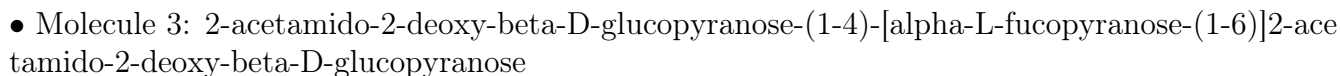
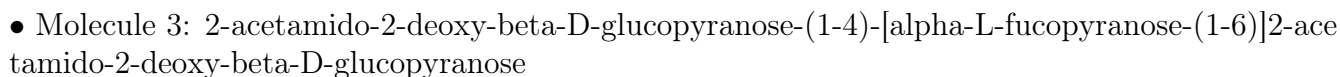
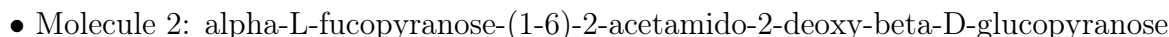
- Molecule 8 is SODIUM ION (CCD ID: NA) (formula: Na).

Mol	Chain	Residues	Atoms		ZeroOcc	AltConf
8	A	1	Total	Na	0	0
			1	1		

- Molecule 9 is water.

Mol	Chain	Residues	Atoms		ZeroOcc	AltConf
9	A	134	Total	O	0	0
			134	134		

- Molecule 1: Cholinesterase



4 Data and refinement statistics

Property	Value	Source
Space group	I 4 2 2	Depositor
Cell constants a, b, c, α , β , γ	155.28Å 155.28Å 128.39Å 90.00° 90.00° 90.00°	Depositor
Resolution (Å)	48.01 – 2.52 48.01 – 2.52	Depositor EDS
% Data completeness (in resolution range)	99.3 (48.01-2.52) 99.3 (48.01-2.52)	Depositor EDS
R_{merge}	0.15	Depositor
R_{sym}	(Not available)	Depositor
$\langle I/\sigma(I) \rangle$ ¹	1.78 (at 2.51Å)	Xtriage
Refinement program	PHENIX 1.21.2_5419	Depositor
R, R_{free}	0.185 , 0.238 0.186 , 0.237	Depositor DCC
R_{free} test set	1328 reflections (4.96%)	wwPDB-VP
Wilson B-factor (Å ²)	49.7	Xtriage
Anisotropy	0.164	Xtriage
Bulk solvent k_{sol} (e/Å ³), B_{sol} (Å ²)	0.34 , 50.8	EDS
L-test for twinning ²	$\langle L \rangle = 0.50$, $\langle L^2 \rangle = 0.34$	Xtriage
Estimated twinning fraction	No twinning to report.	Xtriage
F_o, F_c correlation	0.96	EDS
Total number of atoms	4571	wwPDB-VP
Average B, all atoms (Å ²)	55.0	wwPDB-VP

Xtriage's analysis on translational NCS is as follows: *The largest off-origin peak in the Patterson function is 3.59% of the height of the origin peak. No significant pseudotranslation is detected.*

¹Intensities estimated from amplitudes.

²Theoretical values of $\langle |L| \rangle$, $\langle L^2 \rangle$ for acentric reflections are 0.5, 0.333 respectively for untwinned datasets, and 0.375, 0.2 for perfectly twinned datasets.

5 Model quality

5.1 Standard geometry

Bond lengths and bond angles in the following residue types are not validated in this section: SO4, NAG, FUC, MES, A1JOH, NA

The Z score for a bond length (or angle) is the number of standard deviations the observed value is removed from the expected value. A bond length (or angle) with $|Z| > 5$ is considered an outlier worth inspection. RMSZ is the root-mean-square of all Z scores of the bond lengths (or angles).

Mol	Chain	Bond lengths		Bond angles	
		RMSZ	$\# Z > 5$	RMSZ	$\# Z > 5$
1	A	0.35	0/4359	0.51	0/5917

There are no bond length outliers.

There are no bond angle outliers.

There are no chirality outliers.

There are no planarity outliers.

5.2 Too-close contacts

In the following table, the Non-H and H(model) columns list the number of non-hydrogen atoms and hydrogen atoms in the chain respectively. The H(added) column lists the number of hydrogen atoms added and optimized by MolProbity. The Clashes column lists the number of clashes within the asymmetric unit, whereas Symm-Clashes lists symmetry-related clashes.

Mol	Chain	Non-H	H(model)	H(added)	Clashes	Symm-Clashes
1	A	4232	0	4130	40	0
2	B	24	0	22	0	0
3	C	38	0	34	1	0
3	D	38	0	34	0	0
4	A	42	0	39	0	0
5	A	30	0	0	0	0
6	A	12	0	13	2	0
7	A	20	0	0	0	0
8	A	1	0	0	0	0
9	A	134	0	0	3	0
All	All	4571	0	4272	41	0

The all-atom clashscore is defined as the number of clashes found per 1000 atoms (including hydrogen atoms). The all-atom clashscore for this structure is 5.

All (41) close contacts within the same asymmetric unit are listed below, sorted by their clash magnitude.

Atom-1	Atom-2	Interatomic distance (Å)	Clash overlap (Å)
1:A:425:SER:OG	1:A:428:LEU:HD21	2.02	0.59
1:A:522:TRP:O	1:A:527:PRO:HD3	2.04	0.58
1:A:270:GLN:O	1:A:274:LEU:HD22	2.04	0.58
1:A:514:LEU:HD12	6:A:605:MES:H52	1.84	0.57
1:A:39:GLY:O	1:A:265:ARG:HD3	2.06	0.55
1:A:69:ILE:HD11	1:A:88:LEU:HD11	1.90	0.53
1:A:328:ALA:HA	1:A:434:MET:CE	2.38	0.53
1:A:328:ALA:HA	1:A:434:MET:HE3	1.90	0.53
1:A:319:VAL:O	1:A:418:PHE:HA	2.08	0.53
1:A:209:LEU:HD23	1:A:312:PHE:HB3	1.93	0.51
1:A:428:LEU:N	1:A:428:LEU:HD22	2.26	0.51
3:C:2:NAG:H81	3:C:3:FUC:H61	1.92	0.51
1:A:383:GLU:O	1:A:387:GLU:HG3	2.10	0.50
1:A:40:ARG:HD2	1:A:40:ARG:H	1.76	0.50
1:A:469:LYS:HG2	1:A:482:GLU:HG2	1.94	0.48
1:A:500:TYR:CZ	1:A:511:MET:HB2	2.49	0.48
1:A:161:GLU:HG3	1:A:258:THR:HG23	1.96	0.48
1:A:205:SER:HB3	1:A:222:LEU:HD21	1.95	0.48
1:A:69:ILE:HD12	1:A:84:PRO:HD2	1.96	0.47
1:A:423:HIS:NE2	1:A:425:SER:HA	2.30	0.47
1:A:35:GLN:HG2	9:A:825:HOH:O	2.15	0.46
1:A:227:PHE:CD1	1:A:227:PHE:C	2.93	0.45
1:A:339:LYS:O	1:A:431:PRO:HG3	2.16	0.45
1:A:40:ARG:O	1:A:44:LYS:HD2	2.17	0.45
1:A:425:SER:CB	1:A:428:LEU:HD21	2.46	0.45
1:A:49:LEU:HD12	1:A:49:LEU:HA	1.78	0.45
1:A:126:HIS:HD2	9:A:762:HOH:O	2.00	0.45
1:A:425:SER:O	1:A:428:LEU:CD2	2.65	0.44
1:A:408:LYS:HA	1:A:408:LYS:HD2	1.74	0.44
1:A:32:PRO:HB3	1:A:94:TYR:CE2	2.54	0.42
1:A:449:PRO:HA	1:A:456:TYR:CD2	2.54	0.42
1:A:506:GLU:HB2	1:A:507:SER:H	1.64	0.42
1:A:234:THR:HB	1:A:293:THR:HG22	2.01	0.42
1:A:425:SER:HB3	9:A:769:HOH:O	2.19	0.42
1:A:320:GLY:HA3	1:A:419:TYR:CE2	2.55	0.42
1:A:452:ARG:HB2	1:A:453:ARG:NH1	2.34	0.41
1:A:370:LEU:O	1:A:374:THR:HG23	2.19	0.41
1:A:428:LEU:HG	1:A:440:TYR:CZ	2.54	0.41
1:A:515:ARG:HH11	6:A:605:MES:H32	1.85	0.41
1:A:299:LEU:HD23	1:A:299:LEU:HA	1.97	0.40

Continued on next page...

Continued from previous page...

Atom-1	Atom-2	Interatomic distance (Å)	Clash overlap (Å)
1:A:348:LYS:HE2	1:A:348:LYS:HB2	1.72	0.40

There are no symmetry-related clashes.

5.3 Torsion angles [i](#)

5.3.1 Protein backbone [i](#)

In the following table, the Percentiles column shows the percent Ramachandran outliers of the chain as a percentile score with respect to all X-ray entries followed by that with respect to entries of similar resolution.

The Analysed column shows the number of residues for which the backbone conformation was analysed, and the total number of residues.

Mol	Chain	Analysed	Favoured	Allowed	Outliers	Percentiles	
1	A	529/529 (100%)	505 (96%)	22 (4%)	2 (0%)	30	48

All (2) Ramachandran outliers are listed below:

Mol	Chain	Res	Type
1	A	106	ASN
1	A	116	GLY

5.3.2 Protein sidechains [i](#)

In the following table, the Percentiles column shows the percent sidechain outliers of the chain as a percentile score with respect to all X-ray entries followed by that with respect to entries of similar resolution.

The Analysed column shows the number of residues for which the sidechain conformation was analysed, and the total number of residues.

Mol	Chain	Analysed	Rotameric	Outliers	Percentiles	
1	A	456/454 (100%)	448 (98%)	8 (2%)	54	77

All (8) residues with a non-rotameric sidechain are listed below:

Mol	Chain	Res	Type
1	A	48	SER

Continued on next page...

Continued from previous page...

Mol	Chain	Res	Type
1	A	59	THR
1	A	195	PHE
1	A	425	SER
1	A	453	ARG
1	A	489	SER
1	A	506	GLU
1	A	529	VAL

Sometimes sidechains can be flipped to improve hydrogen bonding and reduce clashes. All (5) such sidechains are listed below:

Mol	Chain	Res	Type
1	A	35	GLN
1	A	270	GLN
1	A	289	ASN
1	A	380	GLN
1	A	455	GLN

5.3.3 RNA ⓘ

There are no RNA molecules in this entry.

5.4 Non-standard residues in protein, DNA, RNA chains ⓘ

There are no non-standard protein/DNA/RNA residues in this entry.

5.5 Carbohydrates ⓘ

8 monosaccharides are modelled in this entry.

In the following table, the Counts columns list the number of bonds (or angles) for which Mogul statistics could be retrieved, the number of bonds (or angles) that are observed in the model and the number of bonds (or angles) that are defined in the Chemical Component Dictionary. The Link column lists molecule types, if any, to which the group is linked. The Z score for a bond length (or angle) is the number of standard deviations the observed value is removed from the expected value. A bond length (or angle) with $|Z| > 2$ is considered an outlier worth inspection. RMSZ is the root-mean-square of all Z scores of the bond lengths (or angles).

Mol	Type	Chain	Res	Link	Bond lengths			Bond angles		
					Counts	RMSZ	$\# Z > 2$	Counts	RMSZ	$\# Z > 2$
2	NAG	B	1	2,1	14,14,15	0.71	0	17,19,21	1.16	1 (5%)

Mol	Type	Chain	Res	Link	Bond lengths			Bond angles		
					Counts	RMSZ	# Z > 2	Counts	RMSZ	# Z > 2
2	FUC	B	2	2	10,10,11	0.75	0	14,14,16	1.16	1 (7%)
3	NAG	C	1	3,1	14,14,15	0.65	0	17,19,21	1.45	5 (29%)
3	NAG	C	2	3	14,14,15	0.71	0	17,19,21	0.96	1 (5%)
3	FUC	C	3	3	10,10,11	0.97	0	14,14,16	1.39	2 (14%)
3	NAG	D	1	3,1	14,14,15	0.96	1 (7%)	17,19,21	1.30	2 (11%)
3	NAG	D	2	3	14,14,15	0.69	0	17,19,21	0.78	0
3	FUC	D	3	3	10,10,11	0.78	0	14,14,16	1.43	3 (21%)

In the following table, the Chirals column lists the number of chiral outliers, the number of chiral centers analysed, the number of these observed in the model and the number defined in the Chemical Component Dictionary. Similar counts are reported in the Torsion and Rings columns. '-' means no outliers of that kind were identified.

Mol	Type	Chain	Res	Link	Chirals	Torsions	Rings
2	NAG	B	1	2,1	-	4/6/23/26	0/1/1/1
2	FUC	B	2	2	-	-	0/1/1/1
3	NAG	C	1	3,1	-	0/6/23/26	0/1/1/1
3	NAG	C	2	3	-	4/6/23/26	0/1/1/1
3	FUC	C	3	3	-	-	0/1/1/1
3	NAG	D	1	3,1	-	0/6/23/26	0/1/1/1
3	NAG	D	2	3	-	0/6/23/26	0/1/1/1
3	FUC	D	3	3	-	-	0/1/1/1

All (1) bond length outliers are listed below:

Mol	Chain	Res	Type	Atoms	Z	Observed(Å)	Ideal(Å)
3	D	1	NAG	O5-C1	-2.37	1.39	1.43

All (15) bond angle outliers are listed below:

Mol	Chain	Res	Type	Atoms	Z	Observed(°)	Ideal(°)
3	D	1	NAG	C2-N2-C7	3.25	127.53	122.90
2	B	1	NAG	C1-O5-C5	3.12	116.42	112.19
3	C	3	FUC	C1-C2-C3	3.00	113.35	109.67
3	D	3	FUC	O4-C4-C5	2.74	115.74	109.67
3	C	1	NAG	C1-O5-C5	2.70	115.86	112.19
2	B	2	FUC	C1-O5-C5	2.54	118.52	112.78
3	C	2	NAG	C2-N2-C7	2.51	126.48	122.90
3	C	1	NAG	C1-C2-N2	2.43	114.63	110.49
3	D	3	FUC	C1-O5-C5	2.21	117.78	112.78

Continued on next page...

Continued from previous page...

Mol	Chain	Res	Type	Atoms	Z	Observed(°)	Ideal(°)
3	C	3	FUC	C1-O5-C5	2.18	117.72	112.78
3	D	1	NAG	O4-C4-C5	2.18	114.70	109.30
3	C	1	NAG	C2-N2-C7	2.16	125.98	122.90
3	C	1	NAG	O3-C3-C4	2.13	115.27	110.35
3	C	1	NAG	O3-C3-C2	-2.04	105.24	109.47
3	D	3	FUC	O2-C2-C3	2.03	114.21	110.14

There are no chirality outliers.

All (8) torsion outliers are listed below:

Mol	Chain	Res	Type	Atoms
3	C	2	NAG	O5-C5-C6-O6
3	C	2	NAG	C4-C5-C6-O6
2	B	1	NAG	C8-C7-N2-C2
2	B	1	NAG	O7-C7-N2-C2
3	C	2	NAG	C8-C7-N2-C2
3	C	2	NAG	O7-C7-N2-C2
2	B	1	NAG	C4-C5-C6-O6
2	B	1	NAG	O5-C5-C6-O6

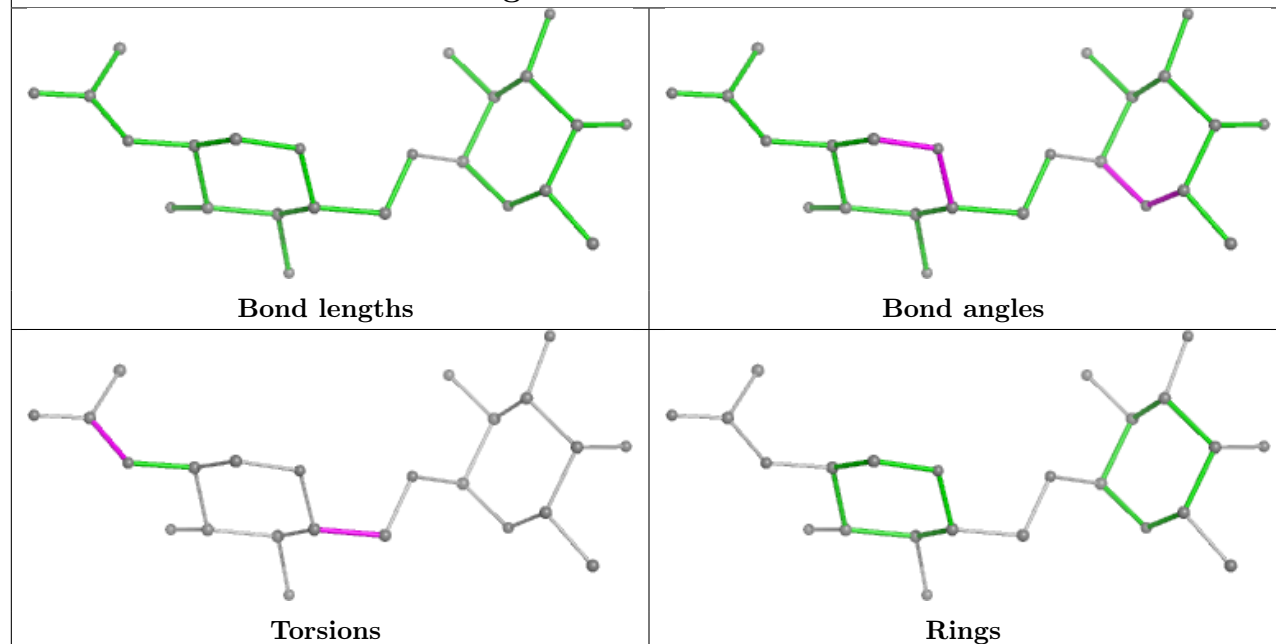
There are no ring outliers.

2 monomers are involved in 1 short contact:

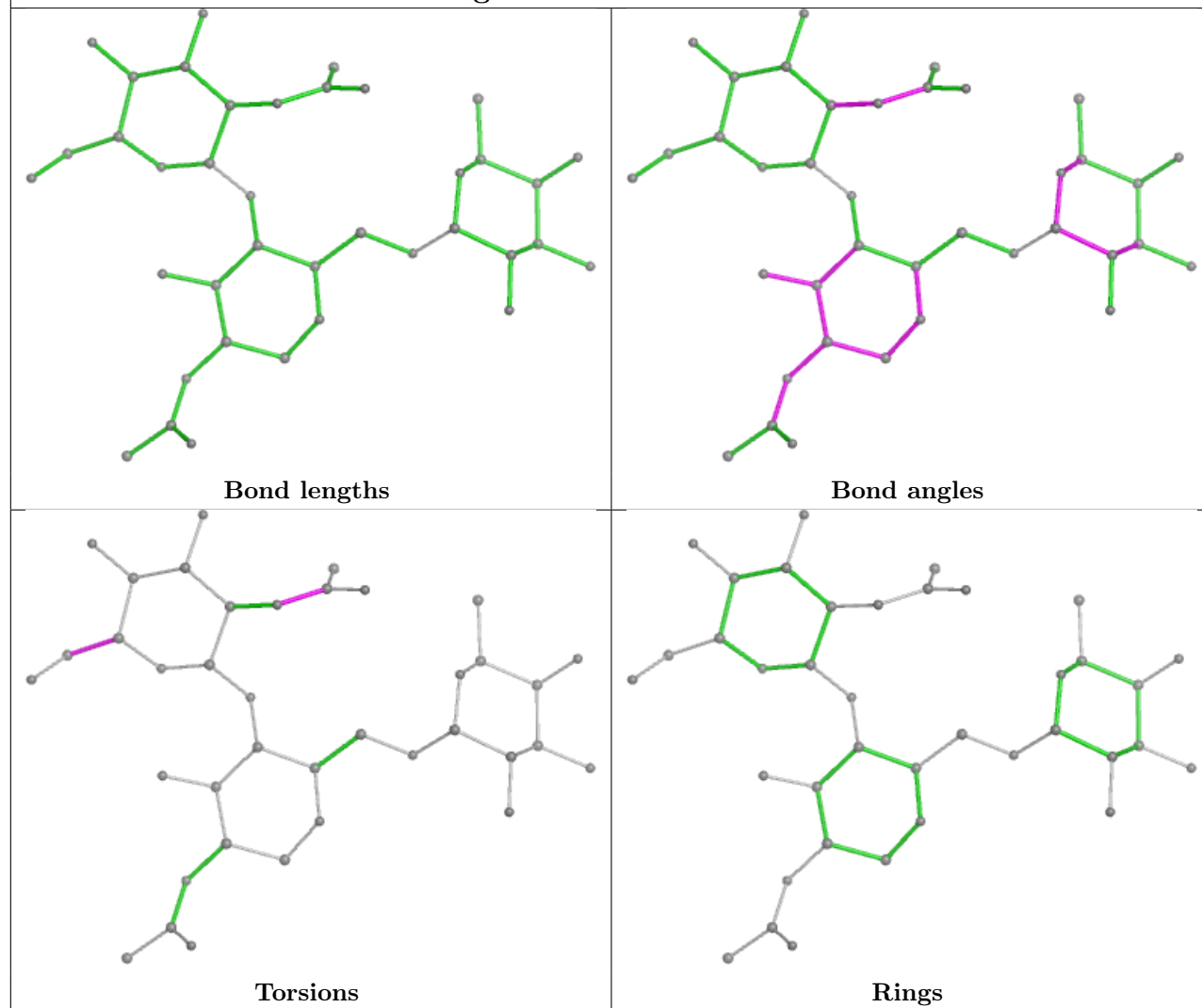
Mol	Chain	Res	Type	Clashes	Symm-Clashes
3	C	2	NAG	1	0
3	C	3	FUC	1	0

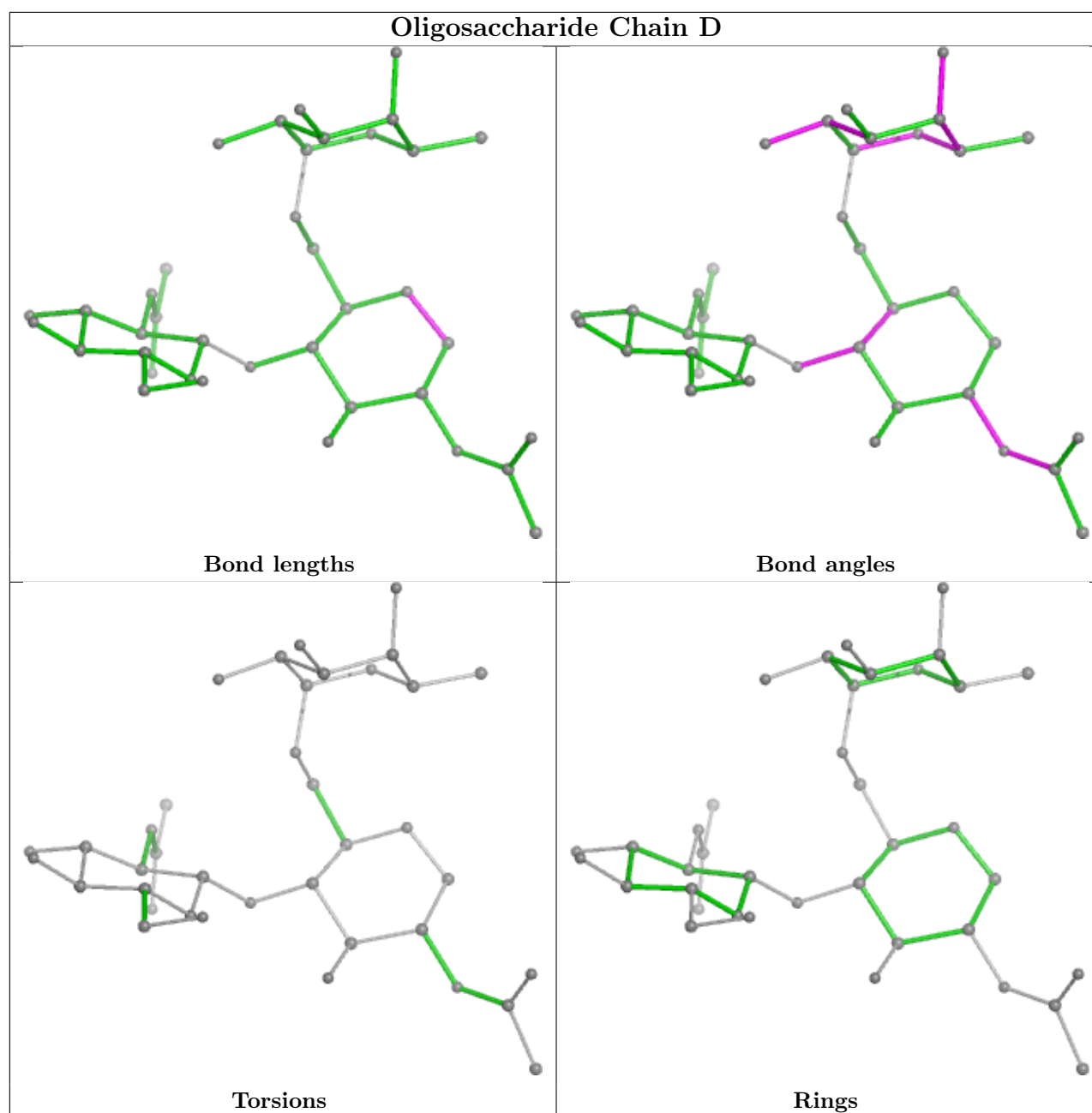
The following is a two-dimensional graphical depiction of Mogul quality analysis of bond lengths, bond angles, torsion angles, and ring geometry for oligosaccharide.

Oligosaccharide Chain B



Oligosaccharide Chain C





5.6 Ligand geometry [i](#)

Of 10 ligands modelled in this entry, 1 is monoatomic - leaving 9 for Mogul analysis.

In the following table, the Counts columns list the number of bonds (or angles) for which Mogul statistics could be retrieved, the number of bonds (or angles) that are observed in the model and the number of bonds (or angles) that are defined in the Chemical Component Dictionary. The Link column lists molecule types, if any, to which the group is linked. The Z score for a bond length (or angle) is the number of standard deviations the observed value is removed from the expected value. A bond length (or angle) with $|Z| > 2$ is considered an outlier worth inspection. RMSZ is the root-mean-square of all Z scores of the bond lengths (or angles).

Mol	Type	Chain	Res	Link	Bond lengths			Bond angles		
					Counts	RMSZ	# Z > 2	Counts	RMSZ	# Z > 2
4	NAG	A	602	1	14,14,15	0.66	0	17,19,21	0.97	1 (5%)
4	NAG	A	603	1	14,14,15	0.67	0	17,19,21	1.99	3 (17%)
7	SO4	A	607	-	4,4,4	0.72	0	6,6,6	0.21	0
7	SO4	A	608	-	4,4,4	0.77	0	6,6,6	0.22	0
5	A1JOH	A	604	-	33,34,34	1.51	5 (15%)	42,48,48	2.24	11 (26%)
7	SO4	A	609	-	4,4,4	0.67	0	6,6,6	0.13	0
7	SO4	A	606	-	4,4,4	0.68	0	6,6,6	0.17	0
4	NAG	A	601	1	14,14,15	0.81	1 (7%)	17,19,21	1.80	4 (23%)
6	MES	A	605	-	12,12,12	1.32	1 (8%)	14,16,16	1.36	2 (14%)

In the following table, the Chirals column lists the number of chiral outliers, the number of chiral centers analysed, the number of these observed in the model and the number defined in the Chemical Component Dictionary. Similar counts are reported in the Torsion and Rings columns. '-' means no outliers of that kind were identified.

Mol	Type	Chain	Res	Link	Chirals	Torsions	Rings
4	NAG	A	602	1	-	0/6/23/26	0/1/1/1
4	NAG	A	603	1	-	0/6/23/26	0/1/1/1
5	A1JOH	A	604	-	-	4/16/38/38	0/6/5/5
4	NAG	A	601	1	-	1/6/23/26	0/1/1/1
6	MES	A	605	-	-	4/6/14/14	0/1/1/1

All (7) bond length outliers are listed below:

Mol	Chain	Res	Type	Atoms	Z	Observed(Å)	Ideal(Å)
5	A	604	A1JOH	C29-C20	3.64	1.45	1.38
6	A	605	MES	C8-S	3.53	1.82	1.77
5	A	604	A1JOH	C18-N02	3.38	1.40	1.35
5	A	604	A1JOH	C17-C12	2.20	1.43	1.38
4	A	601	NAG	C1-C2	2.14	1.55	1.52
5	A	604	A1JOH	C07-C08	2.03	1.58	1.52
5	A	604	A1JOH	C23-C22	2.01	1.46	1.41

All (21) bond angle outliers are listed below:

Mol	Chain	Res	Type	Atoms	Z	Observed(°)	Ideal(°)
5	A	604	A1JOH	C07-C04-C05	-6.23	98.45	109.44
5	A	604	A1JOH	C20-O19-C18	6.15	128.74	117.27
4	A	603	NAG	C1-O5-C5	5.16	119.18	112.19
5	A	604	A1JOH	O19-C18-N02	5.09	117.30	111.88

Continued on next page...

Continued from previous page...

Mol	Chain	Res	Type	Atoms	Z	Observed(°)	Ideal(°)
4	A	603	NAG	C2-N2-C7	4.59	129.44	122.90
5	A	604	A1JOH	C08-N09-C06	-3.86	102.02	109.08
4	A	601	NAG	O5-C1-C2	-3.59	105.62	111.29
4	A	601	NAG	C2-N2-C7	3.48	127.85	122.90
4	A	601	NAG	C1-O5-C5	3.43	116.84	112.19
5	A	604	A1JOH	C03-N02-C18	-3.41	111.09	120.15
5	A	604	A1JOH	C20-C21-C22	3.08	124.14	119.70
4	A	601	NAG	C1-C2-N2	3.07	115.73	110.49
6	A	605	MES	O1S-S-C8	-2.96	103.35	106.92
5	A	604	A1JOH	C29-C20-C21	-2.81	117.03	120.81
4	A	603	NAG	O7-C7-N2	2.67	126.87	121.95
5	A	604	A1JOH	C07-C08-N09	-2.47	107.64	111.43
6	A	605	MES	C2-C3-N4	-2.39	106.47	110.10
5	A	604	A1JOH	C23-C22-C21	2.31	126.10	122.02
5	A	604	A1JOH	C08-C07-C04	2.09	113.67	109.29
5	A	604	A1JOH	C17-C12-C13	-2.08	114.04	117.10
4	A	602	NAG	C2-N2-C7	2.04	125.81	122.90

There are no chirality outliers.

All (9) torsion outliers are listed below:

Mol	Chain	Res	Type	Atoms
5	A	604	A1JOH	C04-C03-N02-C01
5	A	604	A1JOH	C10-C03-N02-C01
5	A	604	A1JOH	O19-C18-N02-C01
5	A	604	A1JOH	O30-C18-N02-C01
6	A	605	MES	C7-C8-S-O2S
6	A	605	MES	C7-C8-S-O3S
6	A	605	MES	C8-C7-N4-C3
6	A	605	MES	C7-C8-S-O1S
4	A	601	NAG	C3-C2-N2-C7

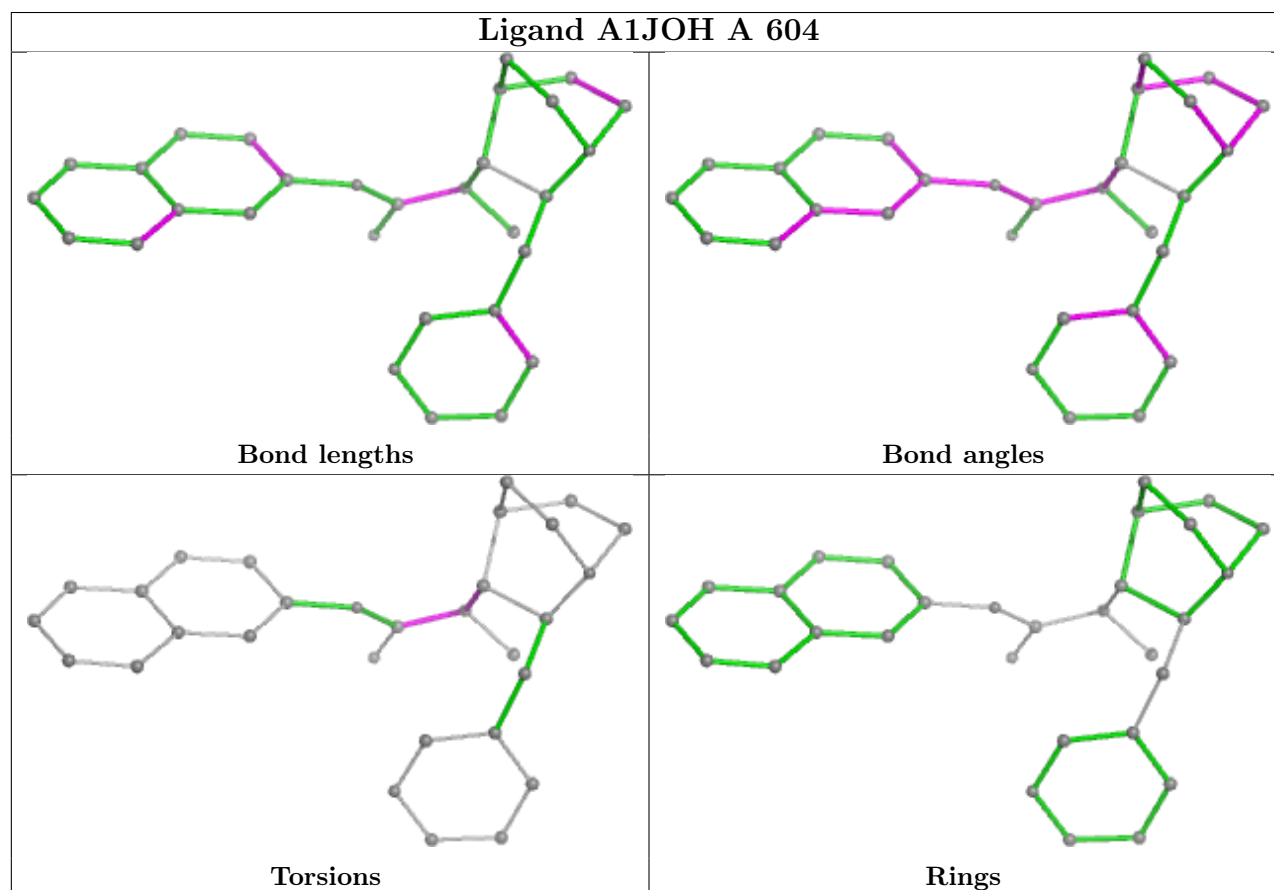
There are no ring outliers.

1 monomer is involved in 2 short contacts:

Mol	Chain	Res	Type	Clashes	Symm-Clashes
6	A	605	MES	2	0

The following is a two-dimensional graphical depiction of Mogul quality analysis of bond lengths, bond angles, torsion angles, and ring geometry for all instances of the Ligand of Interest. In addition, ligands with molecular weight > 250 and outliers as shown on the validation Tables will

also be included. For torsion angles, if less than 5% of the Mogul distribution of torsion angles is within 10 degrees of the torsion angle in question, then that torsion angle is considered an outlier. Any bond that is central to one or more torsion angles identified as an outlier by Mogul will be highlighted in the graph. For rings, the root-mean-square deviation (RMSD) between the ring in question and similar rings identified by Mogul is calculated over all ring torsion angles. If the average RMSD is greater than 60 degrees and the minimal RMSD between the ring in question and any Mogul-identified rings is also greater than 60 degrees, then that ring is considered an outlier. The outliers are highlighted in purple. The color gray indicates Mogul did not find sufficient equivalents in the CSD to analyse the geometry.



5.7 Other polymers [i](#)

There are no such residues in this entry.

5.8 Polymer linkage issues [i](#)

There are no chain breaks in this entry.

6 Fit of model and data [i](#)

6.1 Protein, DNA and RNA chains [i](#)

In the following table, the column labelled ‘#RSRZ > 2’ contains the number (and percentage) of RSRZ outliers, followed by percent RSRZ outliers for the chain as percentile scores relative to all X-ray entries and entries of similar resolution. The OWAB column contains the minimum, median, 95th percentile and maximum values of the occupancy-weighted average B-factor per residue. The column labelled ‘Q < 0.9’ lists the number of (and percentage) of residues with an average occupancy less than 0.9.

Mol	Chain	Analysed	<RSRZ>	#RSRZ>2	OWAB(Å ²)	Q<0.9
1	A	526/529 (99%)	-0.21	12 (2%) 61 59	21, 50, 82, 112	5 (0%)

All (12) RSRZ outliers are listed below:

Mol	Chain	Res	Type	RSRZ
1	A	377	VAL	3.8
1	A	376	TRP	3.0
1	A	378	ASP	2.5
1	A	454	ASP	2.4
1	A	274	LEU	2.4
1	A	282	TYR	2.4
1	A	214[A]	HIS	2.3
1	A	371	PHE	2.2
1	A	237	TYR	2.2
1	A	4	ILE	2.1
1	A	380	GLN	2.1
1	A	50	THR	2.0

6.2 Non-standard residues in protein, DNA, RNA chains [i](#)

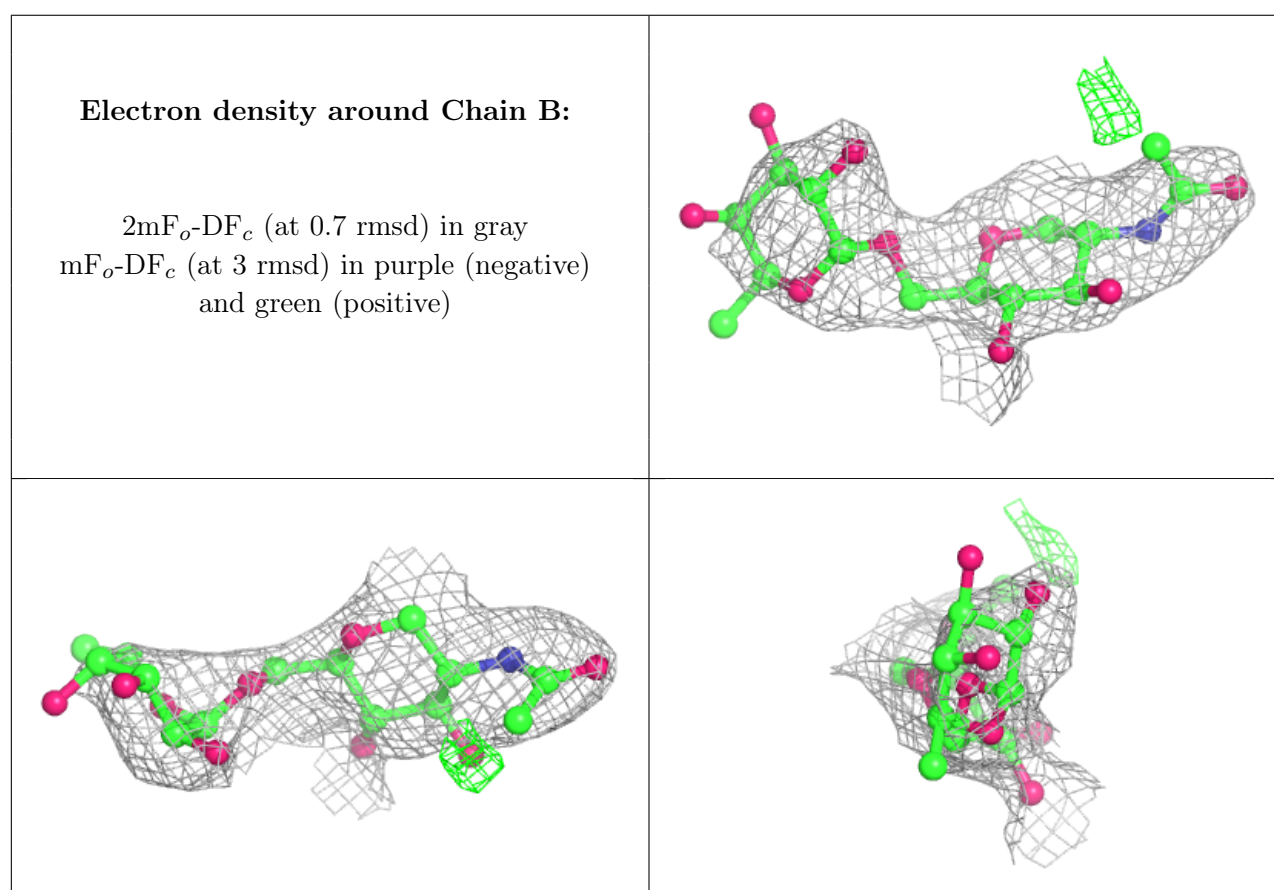
There are no non-standard protein/DNA/RNA residues in this entry.

6.3 Carbohydrates [i](#)

In the following table, the Atoms column lists the number of modelled atoms in the group and the number defined in the chemical component dictionary. The B-factors column lists the minimum, median, 95th percentile and maximum values of B factors of atoms in the group. The column labelled ‘Q < 0.9’ lists the number of atoms with occupancy less than 0.9.

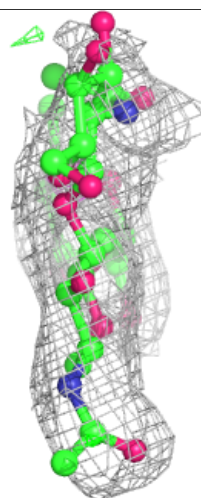
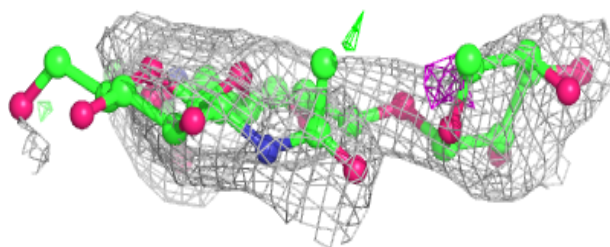
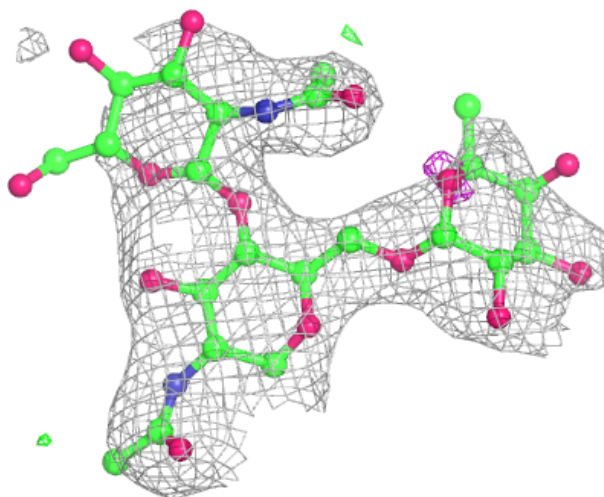
Mol	Type	Chain	Res	Atoms	RSCC	RSR	B-factors(\AA^2)	Q<0.9
3	NAG	C	2	14/15	0.52	0.15	92,112,123,123	0
2	FUC	B	2	10/11	0.60	0.14	116,126,132,134	0
2	NAG	B	1	14/15	0.66	0.14	86,103,117,117	0
3	FUC	D	3	10/11	0.68	0.17	69,88,94,95	0
3	NAG	D	2	14/15	0.79	0.13	79,85,101,104	0
3	FUC	C	3	10/11	0.84	0.14	63,80,94,103	0
3	NAG	C	1	14/15	0.86	0.10	73,82,92,98	0
3	NAG	D	1	14/15	0.93	0.08	53,65,75,80	0

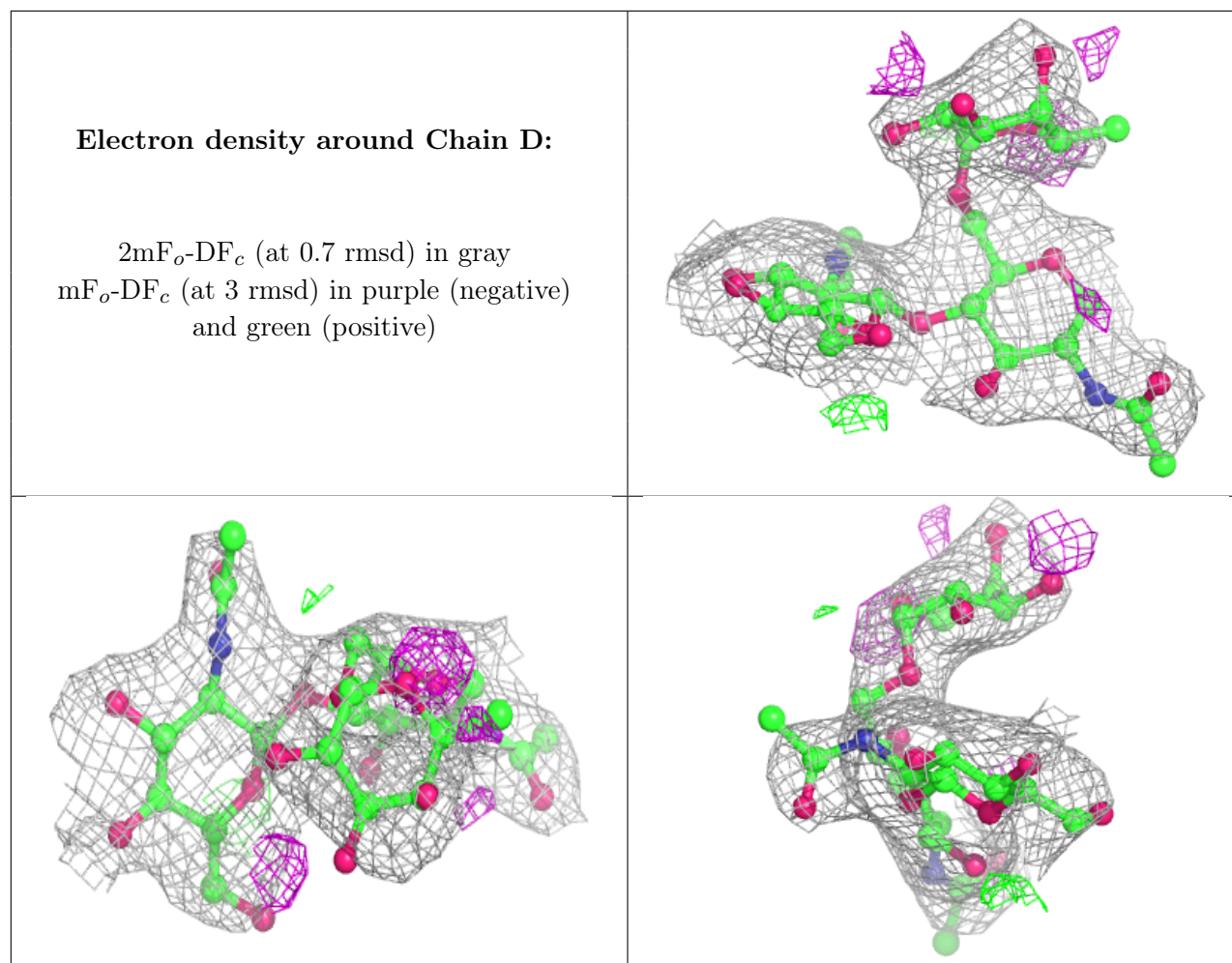
The following is a graphical depiction of the model fit to experimental electron density for oligosaccharide. Each fit is shown from different orientation to approximate a three-dimensional view.



Electron density around Chain C:

$2mF_o-DF_c$ (at 0.7 rmsd) in gray
 mF_o-DF_c (at 3 rmsd) in purple (negative)
and green (positive)



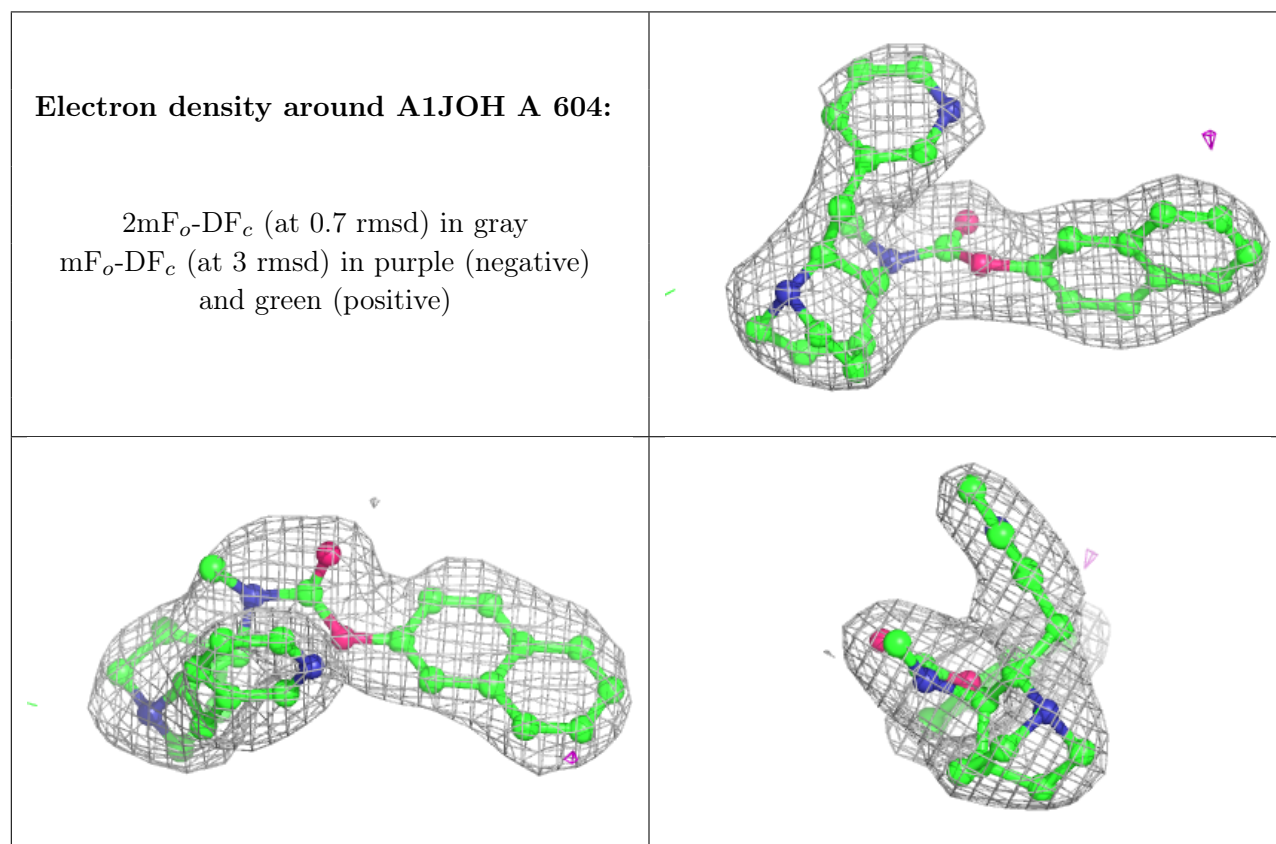


6.4 Ligands [i](#)

In the following table, the Atoms column lists the number of modelled atoms in the group and the number defined in the chemical component dictionary. The B-factors column lists the minimum, median, 95th percentile and maximum values of B factors of atoms in the group. The column labelled 'Q< 0.9' lists the number of atoms with occupancy less than 0.9.

Mol	Type	Chain	Res	Atoms	RSCC	RSR	B-factors(\AA^2)	Q<0.9
7	SO4	A	609	5/5	0.57	0.09	115,118,136,137	0
4	NAG	A	601	14/15	0.61	0.15	100,113,123,124	0
4	NAG	A	602	14/15	0.69	0.14	95,103,112,117	0
6	MES	A	605	12/12	0.76	0.14	59,74,110,110	0
4	NAG	A	603	14/15	0.78	0.13	53,82,91,92	0
7	SO4	A	607	5/5	0.81	0.29	58,77,100,101	0
7	SO4	A	606	5/5	0.83	0.09	82,88,99,105	0
8	NA	A	610	1/1	0.84	0.16	51,51,51,51	0
7	SO4	A	608	5/5	0.87	0.15	61,74,90,92	0
5	A1JOH	A	604	30/30	0.96	0.08	35,41,45,46	0

The following is a graphical depiction of the model fit to experimental electron density of all instances of the Ligand of Interest. In addition, ligands with molecular weight > 250 and outliers as shown on the geometry validation Tables will also be included. Each fit is shown from different orientation to approximate a three-dimensional view.



6.5 Other polymers ⓘ

There are no such residues in this entry.