



Full wwPDB X-ray Structure Validation Report ⓘ

Aug 13, 2025 – 04:15 PM EDT

PDB ID : 8SE4 / pdb_00008se4
Title : Structure of Full-length Human Protein Kinase C Beta 1 (PKCBI) in the Active and Inactive Conformation
Authors : Cong, A.T.Q.; Witter, T.L.; Bruinsma, E.S.; Jayaraman, S.; Hawse, J.R.; Goetz, M.P.; Schellenberg, M.J.
Deposited on : 2023-04-07
Resolution : 2.68 Å(reported)

This is a Full wwPDB X-ray Structure Validation Report for a publicly released PDB entry.

We welcome your comments at validation@mail.wwpdb.org

A user guide is available at

<https://www.wwpdb.org/validation/2017/XrayValidationReportHelp>

with specific help available everywhere you see the ⓘ symbol.

The types of validation reports are described at

<http://www.wwpdb.org/validation/2017/FAQs#types>.

The following versions of software and data (see [references ⓘ](#)) were used in the production of this report:

MolProbity	:	4-5-2 with Phenix2.0rc1
Mogul	:	2022.3.0, CSD as543be (2022)
Xtriage (Phenix)	:	2.0rc1
EDS	:	3.0
buster-report	:	1.1.7 (2018)
Percentile statistics	:	20231227.v01 (using entries in the PDB archive December 27th 2023)
CCP4	:	9.0.006 (Gargrove)
Density-Fitness	:	1.0.12
Ideal geometry (proteins)	:	Engh & Huber (2001)
Ideal geometry (DNA, RNA)	:	Parkinson et al. (1996)
Validation Pipeline (wwPDB-VP)	:	2.45.1

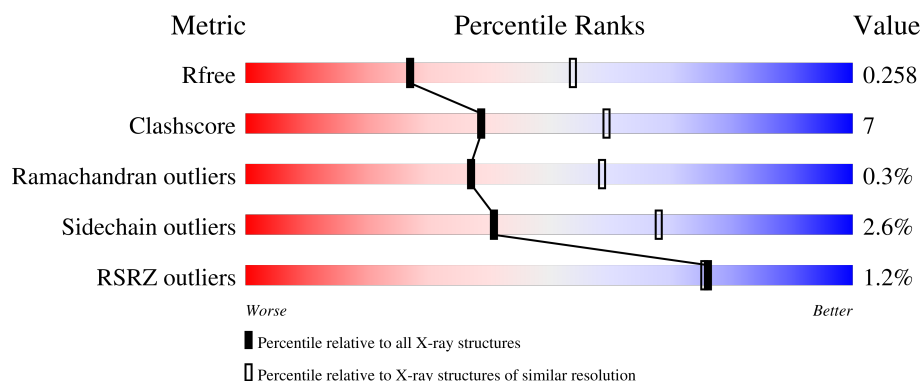
1 Overall quality at a glance

The following experimental techniques were used to determine the structure:

X-RAY DIFFRACTION

The reported resolution of this entry is 2.68 Å.

Percentile scores (ranging between 0-100) for global validation metrics of the entry are shown in the following graphic. The table shows the number of entries on which the scores are based.



Metric	Whole archive (#Entries)	Similar resolution (#Entries, resolution range(Å))
R_{free}	164625	4708 (2.70-2.66)
Clashscore	180529	5138 (2.70-2.66)
Ramachandran outliers	177936	5071 (2.70-2.66)
Sidechain outliers	177891	5071 (2.70-2.66)
RSRZ outliers	164620	4708 (2.70-2.66)

The table below summarises the geometric issues observed across the polymeric chains and their fit to the electron density. The red, orange, yellow and green segments of the lower bar indicate the fraction of residues that contain outliers for ≥ 3 , 2, 1 and 0 types of geometric quality criteria respectively. A grey segment represents the fraction of residues that are not modelled. The numeric value for each fraction is indicated below the corresponding segment, with a dot representing fractions $\leq 5\%$. The upper red bar (where present) indicates the fraction of residues that have poor fit to the electron density. The numeric value is given above the bar.

Mol	Chain	Length	Quality of chain
1	A	672	
1	B	672	

2 Entry composition

There are 4 unique types of molecules in this entry. The entry contains 9685 atoms, of which 0 are hydrogens and 0 are deuteriums.

In the tables below, the ZeroOcc column contains the number of atoms modelled with zero occupancy, the AltConf column contains the number of residues with at least one atom in alternate conformation and the Trace column contains the number of residues modelled with at most 2 atoms.

- Molecule 1 is a protein called Protein kinase C beta type.

Mol	Chain	Residues	Atoms						ZeroOcc	AltConf	Trace
1	A	599	Total	C	N	O	P	S	0	0	0
			4866	3114	823	886	3	40			
1	B	589	Total	C	N	O	P	S	0	0	0
			4791	3065	807	876	3	40			

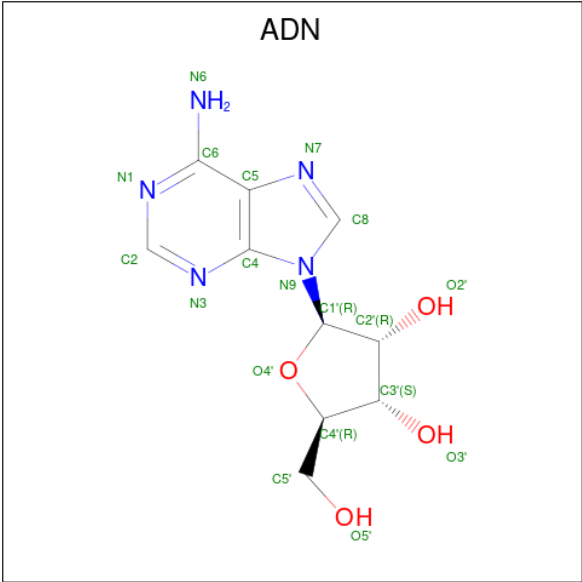
There are 4 discrepancies between the modelled and reference sequences:

Chain	Residue	Modelled	Actual	Comment	Reference
A	0	SER	-	expression tag	UNP P05771
A	1	ASN	-	expression tag	UNP P05771
B	0	SER	-	expression tag	UNP P05771
B	1	ASN	-	expression tag	UNP P05771

- Molecule 2 is ZINC ION (CCD ID: ZN) (formula: Zn).

Mol	Chain	Residues	Atoms		ZeroOcc	AltConf
2	A	4	Total	Zn	0	0
			4	4		
2	B	4	Total	Zn	0	0
			4	4		

- Molecule 3 is ADENOSINE (CCD ID: ADN) (formula: C₁₀H₁₃N₅O₄).



Mol	Chain	Residues	Atoms				ZeroOcc	AltConf
3	B	1	Total	C	N	O	0	0
			19	10	5	4		

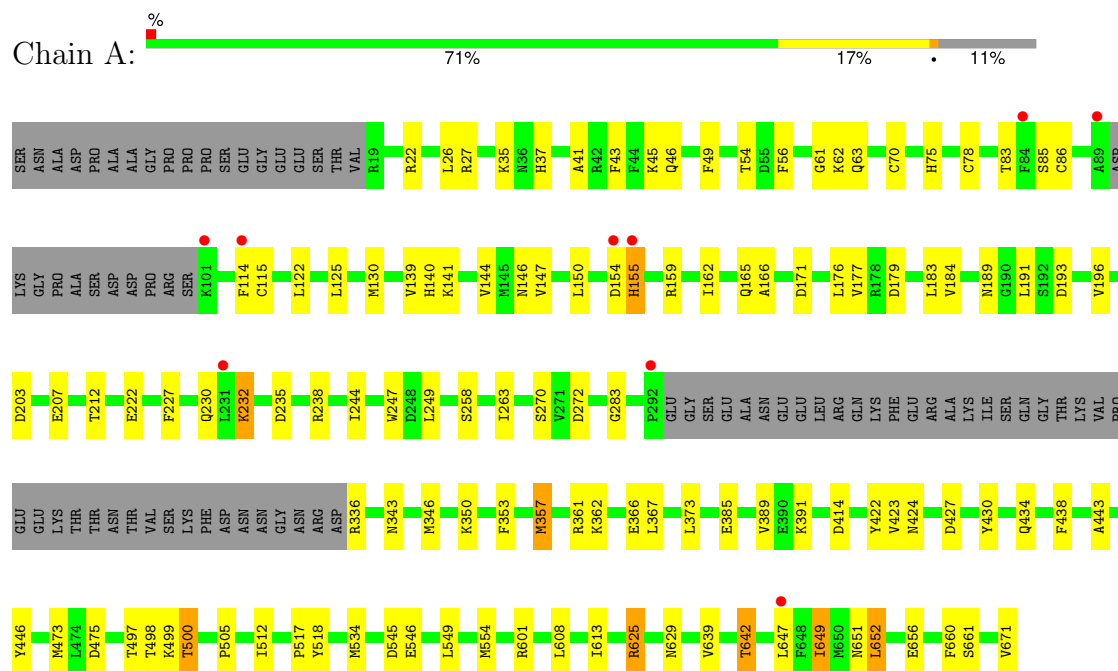
- Molecule 4 is water.

Mol	Chain	Residues	Atoms		ZeroOcc	AltConf
4	A	1	Total	O	0	0
			1	1		

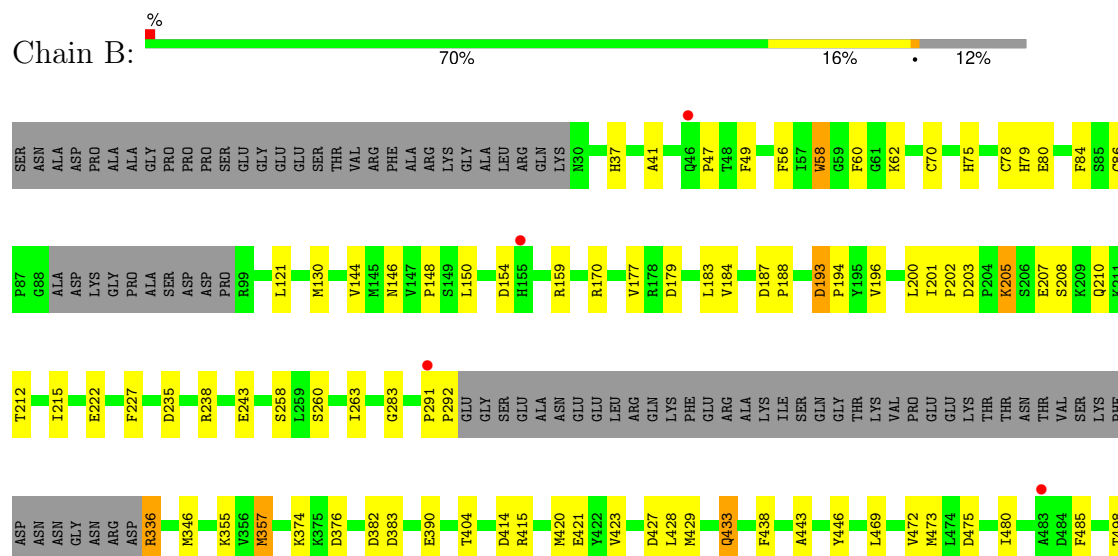
3 Residue-property plots

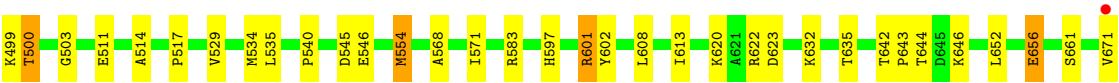
These plots are drawn for all protein, RNA, DNA and oligosaccharide chains in the entry. The first graphic for a chain summarises the proportions of the various outlier classes displayed in the second graphic. The second graphic shows the sequence view annotated by issues in geometry and electron density. Residues are color-coded according to the number of geometric quality criteria for which they contain at least one outlier: green = 0, yellow = 1, orange = 2 and red = 3 or more. A red dot above a residue indicates a poor fit to the electron density ($RSRZ > 2$). Stretches of 2 or more consecutive residues without any outlier are shown as a green connector. Residues present in the sample, but not in the model, are shown in grey.

• Molecule 1: Protein kinase C beta type



• Molecule 1: Protein kinase C beta type





4 Data and refinement statistics

Property	Value	Source
Space group	C 1 2 1	Depositor
Cell constants a, b, c, α , β , γ	163.03Å 158.57Å 86.61Å 90.00° 112.44° 90.00°	Depositor
Resolution (Å)	49.88 – 2.68 49.88 – 2.68	Depositor EDS
% Data completeness (in resolution range)	97.1 (49.88-2.68) 97.5 (49.88-2.68)	Depositor EDS
R_{merge}	0.14	Depositor
R_{sym}	(Not available)	Depositor
$\langle I/\sigma(I) \rangle$ ¹	1.34 (at 2.69Å)	Xtriage
Refinement program	PHENIX (1.17.1_3660: ???)	Depositor
R, R_{free}	0.203 , 0.258 0.205 , 0.258	Depositor DCC
R_{free} test set	2482 reflections (4.26%)	wwPDB-VP
Wilson B-factor (Å ²)	78.8	Xtriage
Anisotropy	0.487	Xtriage
Bulk solvent k_{sol} (e/Å ³), B_{sol} (Å ²)	0.31 , 80.3	EDS
L-test for twinning ²	$\langle L \rangle = 0.48$, $\langle L^2 \rangle = 0.31$	Xtriage
Estimated twinning fraction	No twinning to report.	Xtriage
F_o, F_c correlation	0.96	EDS
Total number of atoms	9685	wwPDB-VP
Average B, all atoms (Å ²)	113.0	wwPDB-VP

Xtriage's analysis on translational NCS is as follows: *The largest off-origin peak in the Patterson function is 4.59% of the height of the origin peak. No significant pseudotranslation is detected.*

¹Intensities estimated from amplitudes.

²Theoretical values of $\langle |L| \rangle$, $\langle L^2 \rangle$ for acentric reflections are 0.5, 0.333 respectively for untwinned datasets, and 0.375, 0.2 for perfectly twinned datasets.

5 Model quality [i](#)

5.1 Standard geometry [i](#)

Bond lengths and bond angles in the following residue types are not validated in this section: ADN, SEP, ZN, TPO

The Z score for a bond length (or angle) is the number of standard deviations the observed value is removed from the expected value. A bond length (or angle) with $|Z| > 5$ is considered an outlier worth inspection. RMSZ is the root-mean-square of all Z scores of the bond lengths (or angles).

Mol	Chain	Bond lengths		Bond angles	
		RMSZ	$\# Z > 5$	RMSZ	$\# Z > 5$
1	A	0.32	4/4956 (0.1%)	0.50	0/6670
1	B	0.26	0/4880	0.48	0/6570
All	All	0.29	4/9836 (0.0%)	0.49	0/13240

All (4) bond length outliers are listed below:

Mol	Chain	Res	Type	Atoms	Z	Observed(Å)	Ideal(Å)
1	A	154	ASP	CG-OD2	5.61	1.36	1.25
1	A	154	ASP	CG-OD1	5.56	1.35	1.25
1	A	155	HIS	CG-ND1	5.38	1.44	1.38
1	A	155	HIS	CE1-NE2	5.14	1.37	1.32

There are no bond angle outliers.

There are no chirality outliers.

There are no planarity outliers.

5.2 Too-close contacts [i](#)

In the following table, the Non-H and H(model) columns list the number of non-hydrogen atoms and hydrogen atoms in the chain respectively. The H(added) column lists the number of hydrogen atoms added and optimized by MolProbity. The Clashes column lists the number of clashes within the asymmetric unit, whereas Symm-Clashes lists symmetry-related clashes.

Mol	Chain	Non-H	H(model)	H(added)	Clashes	Symm-Clashes
1	A	4866	0	4765	69	0
1	B	4791	0	4683	67	0
2	A	4	0	0	0	0
2	B	4	0	0	0	0
3	B	19	0	13	0	0

Continued on next page...

Continued from previous page...

Mol	Chain	Non-H	H(model)	H(added)	Clashes	Symm-Clashes
4	A	1	0	0	0	0
All	All	9685	0	9461	128	0

The all-atom clashscore is defined as the number of clashes found per 1000 atoms (including hydrogen atoms). The all-atom clashscore for this structure is 7.

All (128) close contacts within the same asymmetric unit are listed below, sorted by their clash magnitude.

Atom-1	Atom-2	Interatomic distance (Å)	Clash overlap (Å)
1:A:83:THR:OG1	1:A:155:HIS:HB3	1.72	0.88
1:A:414:ASP:HB2	1:A:649:ILE:HD12	1.67	0.77
1:A:63:GLN:NE2	1:A:651:ASN:O	2.21	0.74
1:B:429:MET:O	1:B:433:GLN:HG2	1.88	0.73
1:B:622:ARG:HG3	1:B:623:ASP:H	1.56	0.69
1:B:514:ALA:HB2	1:B:554:MET:HE1	1.76	0.67
1:A:27:ARG:NH2	1:B:383:ASP:OD2	2.29	0.66
1:A:499:LYS:HE3	1:A:517:PRO:HB3	1.78	0.65
1:B:427:ASP:HA	1:B:473:MET:HA	1.79	0.65
1:B:235:ASP:HA	1:B:238:ARG:HG3	1.80	0.64
1:A:343:ASN:HD22	1:A:362:LYS:HG2	1.62	0.63
1:A:43:PHE:HE2	1:A:61:GLY:H	1.47	0.61
1:A:424:ASN:O	1:A:629:ASN:ND2	2.31	0.60
1:A:361:ARG:NH2	1:A:366:GLU:OE1	2.35	0.59
1:B:355:LYS:HD3	1:B:357:MET:HE2	1.84	0.58
1:B:446:TYR:HB2	1:B:534:MET:HE1	1.85	0.58
1:B:205:LYS:N	1:B:205:LYS:HD2	2.18	0.57
1:A:446:TYR:HB2	1:A:534:MET:HE1	1.86	0.57
1:B:652:LEU:HB3	1:B:656:GLU:OE2	2.05	0.57
1:A:179:ASP:HB3	1:A:222:GLU:HG3	1.87	0.57
1:A:62:LYS:NZ	1:B:382:ASP:OD2	2.30	0.56
1:A:162:ILE:HD12	1:A:244:ILE:HD11	1.86	0.56
1:A:652:LEU:HB2	1:A:656:GLU:OE2	2.05	0.56
1:A:130:MET:HE2	1:A:141:LYS:HG2	1.87	0.56
1:A:423:VAL:HG13	1:A:475:ASP:HA	1.88	0.55
1:A:166:ALA:O	1:A:270:SER:HA	2.06	0.55
1:A:125:LEU:HD13	1:B:184:VAL:HG11	1.88	0.54
1:B:443:ALA:HA	1:B:534:MET:HE2	1.89	0.54
1:B:37:HIS:CE1	1:B:86:CYS:HB2	2.42	0.54
1:B:41:ALA:HB1	1:B:62:LYS:HB3	1.89	0.54
1:B:632:LYS:HA	1:B:635:THR:HB	1.88	0.54
1:A:165:GLN:HB2	1:A:176:LEU:HB3	1.89	0.54

Continued on next page...

Continued from previous page...

Atom-1	Atom-2	Interatomic distance (Å)	Clash overlap (Å)
1:A:70:CYS:HB2	1:A:146:ASN:HB3	1.91	0.53
1:B:235:ASP:CG	1:B:238:ARG:HE	2.17	0.53
1:A:177:VAL:HG11	1:A:196:VAL:HG21	1.90	0.53
1:B:404:THR:HG23	1:B:421:GLU:HG2	1.89	0.53
1:A:357:MET:HE1	1:A:639:VAL:O	2.09	0.53
1:B:260:SER:HB2	1:B:283:GLY:O	2.09	0.53
1:A:191:LEU:HD11	1:A:647:LEU:HD13	1.90	0.53
1:A:430:TYR:O	1:A:434:GLN:HG2	2.09	0.52
1:B:177:VAL:HG11	1:B:196:VAL:HG21	1.91	0.52
1:A:159:ARG:HA	1:A:184:VAL:HG23	1.90	0.52
1:B:200:LEU:HD22	1:B:263:ILE:HD11	1.90	0.52
1:A:443:ALA:HA	1:A:534:MET:HE2	1.91	0.52
1:B:159:ARG:HA	1:B:184:VAL:HG23	1.91	0.52
1:B:374:LYS:HB3	1:B:376:ASP:OD2	2.09	0.52
1:A:115:CYS:HB2	1:A:140:HIS:CE1	2.44	0.51
1:A:235:ASP:HA	1:A:238:ARG:HG3	1.93	0.50
1:B:423:VAL:HG13	1:B:475:ASP:HA	1.93	0.50
1:B:390:GLU:HG3	1:B:485:PHE:HB2	1.93	0.50
1:A:212:THR:HG22	1:A:227:PHE:CZ	2.48	0.49
1:A:427:ASP:HA	1:A:473:MET:HA	1.95	0.49
1:A:247:TRP:CH2	1:A:249:LEU:HB2	2.48	0.49
1:B:601:ARG:HG3	1:B:602:TYR:CD2	2.48	0.49
1:B:194:PRO:HD2	1:B:215:ILE:O	2.13	0.48
1:A:122:LEU:HD23	1:A:140:HIS:CD2	2.49	0.48
1:B:150:LEU:HD12	1:B:150:LEU:O	2.14	0.48
1:A:171:ASP:CG	1:A:232:LYS:H	2.22	0.47
1:A:130:MET:HG3	1:A:144:VAL:HG21	1.96	0.47
1:A:22:ARG:HB2	1:B:429:MET:HG2	1.96	0.47
1:A:443:ALA:HA	1:A:534:MET:CE	2.44	0.47
1:B:84:PHE:CD1	1:B:148:PRO:HG2	2.49	0.47
1:A:258:SER:HB2	1:A:283:GLY:HA3	1.96	0.47
1:B:49:PHE:HB2	1:B:56:PHE:CE1	2.50	0.46
1:A:385:GLU:O	1:A:389:VAL:HG23	2.16	0.46
1:A:26:LEU:HB2	1:B:503:GLY:O	2.15	0.46
1:A:422:TYR:CE2	1:A:424:ASN:HB3	2.50	0.46
1:A:545:ASP:OD1	1:A:546:GLU:N	2.49	0.46
1:B:499:LYS:HE3	1:B:517:PRO:HB3	1.96	0.46
1:B:535:LEU:HD13	1:B:568:ALA:HB1	1.98	0.46
1:B:208:SER:O	1:B:210:GLN:HG3	2.16	0.46
1:B:187:ASP:OD2	1:B:193:ASP:OD1	2.34	0.46
1:B:443:ALA:HA	1:B:534:MET:CE	2.45	0.46

Continued on next page...

Continued from previous page...

Atom-1	Atom-2	Interatomic distance (Å)	Clash overlap (Å)
1:A:367:LEU:HD11	1:A:625:ARG:HG3	1.98	0.45
1:A:512:ILE:HG12	1:A:518:TYR:CE2	2.51	0.45
1:A:498:THR:OG1	1:A:500:TPO:O3P	2.27	0.45
1:A:414:ASP:CB	1:A:649:ILE:HD12	2.44	0.45
1:A:139:VAL:HG11	1:A:147:VAL:HG21	1.99	0.45
1:A:656:GLU:H	1:A:656:GLU:CD	2.25	0.45
1:B:170:ARG:HA	1:B:170:ARG:HD2	1.74	0.44
1:A:258:SER:CB	1:A:283:GLY:HA3	2.47	0.44
1:B:472:VAL:CG1	1:B:480:ILE:HD12	2.47	0.44
1:B:571:ILE:HB	1:B:597:HIS:CE1	2.52	0.44
1:A:43:PHE:HE1	1:A:45:LYS:HD3	1.83	0.44
1:B:429:MET:HE2	1:B:469:LEU:HB2	1.98	0.44
1:A:56:PHE:CE2	1:B:121:LEU:HD22	2.53	0.44
1:B:428:LEU:HD22	1:B:438:PHE:HE2	1.83	0.44
1:B:498:THR:OG1	1:B:500:TPO:O3P	2.31	0.43
1:A:350:LYS:NZ	1:A:642:TPO:O3P	2.49	0.43
1:B:420:MET:HE3	1:B:420:MET:HB2	1.92	0.43
1:B:79:HIS:CE1	1:B:80:GLU:HG3	2.53	0.43
1:B:212:THR:HG22	1:B:227:PHE:CZ	2.53	0.43
1:A:75:HIS:HB2	1:A:78:CYS:SG	2.58	0.43
1:A:35:LYS:HB3	1:A:85:SER:HA	2.01	0.43
1:B:179:ASP:HB3	1:B:222:GLU:HG3	2.01	0.43
1:A:165:GLN:HG2	1:A:272:ASP:OD1	2.19	0.43
1:B:200:LEU:O	1:B:203:ASP:HB2	2.19	0.43
1:B:545:ASP:OD1	1:B:546:GLU:N	2.51	0.43
1:A:37:HIS:CG	1:A:86:CYS:HB2	2.54	0.43
1:A:346:MET:HE3	1:A:346:MET:HB2	1.91	0.43
1:A:56:PHE:CZ	1:B:47:PRO:HG2	2.54	0.42
1:A:497:THR:HA	1:A:518:TYR:O	2.19	0.42
1:B:243:GLU:HG2	1:B:258:SER:HB3	2.00	0.42
1:B:75:HIS:HB2	1:B:78:CYS:SG	2.59	0.42
1:B:529:VAL:HG13	1:B:540:PRO:HG2	2.01	0.42
1:B:608:LEU:HB2	1:B:613:ILE:HD12	2.00	0.42
1:A:49:PHE:HD2	1:A:114:PHE:CG	2.36	0.42
1:B:644:THR:HG22	1:B:646:LYS:HE3	2.01	0.42
1:A:353:PHE:O	1:A:373:LEU:HD22	2.19	0.42
1:A:391:LYS:HE3	1:A:660:PHE:O	2.20	0.42
1:A:41:ALA:HB1	1:A:62:LYS:HB3	2.01	0.41
1:B:291:PRO:HA	1:B:292:PRO:HD3	1.87	0.41
1:A:203:ASP:OD1	1:A:207:GLU:HG2	2.20	0.41
1:B:346:MET:HE3	1:B:346:MET:HB2	1.91	0.41

Continued on next page...

Continued from previous page...

Atom-1	Atom-2	Interatomic distance (Å)	Clash overlap (Å)
1:B:201:ILE:HG13	1:B:202:PRO:HA	2.02	0.41
1:B:58:TRP:CD1	1:B:58:TRP:N	2.89	0.41
1:B:130:MET:HG3	1:B:144:VAL:HG21	2.03	0.41
1:B:414:ASP:OD1	1:B:415:ARG:HG3	2.20	0.41
1:A:37:HIS:CE1	1:A:86:CYS:HB2	2.56	0.41
1:A:46:GLN:NE2	1:B:188:PRO:O	2.54	0.40
1:A:238:ARG:HB2	1:A:263:ILE:HD12	2.03	0.40
1:A:438:PHE:CD2	1:A:534:MET:HE3	2.56	0.40
1:A:608:LEU:HB2	1:A:613:ILE:HD12	2.04	0.40
1:B:511:GLU:OE2	1:B:583:ARG:NH1	2.48	0.40
1:A:505:PRO:HB2	1:A:549:LEU:HD23	2.03	0.40
1:B:70:CYS:HB2	1:B:146:ASN:HB3	2.03	0.40
1:B:336:ARG:HA	1:B:336:ARG:CZ	2.51	0.40
1:B:499:LYS:HD2	1:B:499:LYS:N	2.36	0.40

There are no symmetry-related clashes.

5.3 Torsion angles [i](#)

5.3.1 Protein backbone [i](#)

In the following table, the Percentiles column shows the percent Ramachandran outliers of the chain as a percentile score with respect to all X-ray entries followed by that with respect to entries of similar resolution.

The Analysed column shows the number of residues for which the backbone conformation was analysed, and the total number of residues.

Mol	Chain	Analysed	Favoured	Allowed	Outliers	Percentiles	
1	A	590/672 (88%)	552 (94%)	37 (6%)	1 (0%)	44	66
1	B	580/672 (86%)	540 (93%)	38 (7%)	2 (0%)	37	59
All	All	1170/1344 (87%)	1092 (93%)	75 (6%)	3 (0%)	37	59

All (3) Ramachandran outliers are listed below:

Mol	Chain	Res	Type
1	A	189	ASN
1	B	154	ASP
1	B	643	PRO

5.3.2 Protein sidechains ⓘ

In the following table, the Percentiles column shows the percent sidechain outliers of the chain as a percentile score with respect to all X-ray entries followed by that with respect to entries of similar resolution.

The Analysed column shows the number of residues for which the sidechain conformation was analysed, and the total number of residues.

Mol	Chain	Analysed	Rotameric	Outliers	Percentiles	
1	A	531/593 (90%)	517 (97%)	14 (3%)	41	68
1	B	526/593 (89%)	512 (97%)	14 (3%)	40	67
All	All	1057/1186 (89%)	1029 (97%)	28 (3%)	41	68

All (28) residues with a non-rotameric sidechain are listed below:

Mol	Chain	Res	Type
1	A	54	THR
1	A	150	LEU
1	A	183	LEU
1	A	193	ASP
1	A	230	GLN
1	A	232	LYS
1	A	336	ARG
1	A	357	MET
1	A	554	MET
1	A	601	ARG
1	A	625	ARG
1	A	649	ILE
1	A	652	LEU
1	A	671	VAL
1	B	58	TRP
1	B	60	PHE
1	B	183	LEU
1	B	193	ASP
1	B	205	LYS
1	B	207	GLU
1	B	336	ARG
1	B	357	MET
1	B	433	GLN
1	B	554	MET
1	B	601	ARG
1	B	620	LYS
1	B	656	GLU

Continued on next page...

Continued from previous page...

Mol	Chain	Res	Type
1	B	671	VAL

Sometimes sidechains can be flipped to improve hydrogen bonding and reduce clashes. All (8) such sidechains are listed below:

Mol	Chain	Res	Type
1	A	52	HIS
1	A	68	GLN
1	A	343	ASN
1	A	556	HIS
1	B	68	GLN
1	B	230	GLN
1	B	433	GLN
1	B	556	HIS

5.3.3 RNA ⓘ

There are no RNA molecules in this entry.

5.4 Non-standard residues in protein, DNA, RNA chains ⓘ

6 non-standard protein/DNA/RNA residues are modelled in this entry.

In the following table, the Counts columns list the number of bonds (or angles) for which Mogul statistics could be retrieved, the number of bonds (or angles) that are observed in the model and the number of bonds (or angles) that are defined in the Chemical Component Dictionary. The Link column lists molecule types, if any, to which the group is linked. The Z score for a bond length (or angle) is the number of standard deviations the observed value is removed from the expected value. A bond length (or angle) with $|Z| > 2$ is considered an outlier worth inspection. RMSZ is the root-mean-square of all Z scores of the bond lengths (or angles).

Mol	Type	Chain	Res	Link	Bond lengths			Bond angles		
					Counts	RMSZ	# Z > 2	Counts	RMSZ	# Z > 2
1	TPO	A	642	1	8,10,11	1.17	0	10,14,16	1.77	1 (10%)
1	TPO	A	500	1	8,10,11	0.98	0	10,14,16	2.13	2 (20%)
1	SEP	B	661	1	8,9,10	1.70	2 (25%)	7,12,14	1.08	0
1	TPO	B	500	1	8,10,11	1.70	1 (12%)	10,14,16	1.95	2 (20%)
1	SEP	A	661	1	8,9,10	1.63	1 (12%)	7,12,14	1.66	1 (14%)
1	TPO	B	642	1	8,10,11	1.67	1 (12%)	10,14,16	2.00	2 (20%)

In the following table, the Chirals column lists the number of chiral outliers, the number of chiral

centers analysed, the number of these observed in the model and the number defined in the Chemical Component Dictionary. Similar counts are reported in the Torsion and Rings columns. '-' means no outliers of that kind were identified.

Mol	Type	Chain	Res	Link	Chirals	Torsions	Rings
1	TPO	A	642	1	-	0/9/11/13	-
1	TPO	A	500	1	-	0/9/11/13	-
1	SEP	B	661	1	-	1/6/8/10	-
1	TPO	B	500	1	-	0/9/11/13	-
1	SEP	A	661	1	-	1/6/8/10	-
1	TPO	B	642	1	-	0/9/11/13	-

All (5) bond length outliers are listed below:

Mol	Chain	Res	Type	Atoms	Z	Observed(Å)	Ideal(Å)
1	B	500	TPO	P-O1P	3.80	1.62	1.50
1	B	661	SEP	P-O1P	3.56	1.61	1.50
1	A	661	SEP	P-O1P	3.54	1.61	1.50
1	B	642	TPO	P-O1P	3.53	1.61	1.50
1	B	661	SEP	P-O2P	2.16	1.62	1.54

All (8) bond angle outliers are listed below:

Mol	Chain	Res	Type	Atoms	Z	Observed(°)	Ideal(°)
1	A	500	TPO	P-OG1-CB	-5.55	108.23	123.33
1	B	500	TPO	P-OG1-CB	-5.39	108.68	123.33
1	B	642	TPO	P-OG1-CB	-5.18	109.26	123.33
1	A	642	TPO	P-OG1-CB	-4.75	110.42	123.33
1	A	661	SEP	OG-CB-CA	3.96	112.00	108.14
1	A	500	TPO	CG2-CB-CA	-3.04	107.34	113.26
1	B	642	TPO	CG2-CB-CA	-2.38	108.62	113.26
1	B	500	TPO	CG2-CB-CA	-2.12	109.14	113.26

There are no chirality outliers.

All (2) torsion outliers are listed below:

Mol	Chain	Res	Type	Atoms
1	A	661	SEP	CA-CB-OG-P
1	B	661	SEP	CA-CB-OG-P

There are no ring outliers.

3 monomers are involved in 3 short contacts:

Mol	Chain	Res	Type	Clashes	Symm-Clashes
1	A	642	TPO	1	0
1	A	500	TPO	1	0
1	B	500	TPO	1	0

5.5 Carbohydrates [i](#)

There are no oligosaccharides in this entry.

5.6 Ligand geometry [i](#)

Of 9 ligands modelled in this entry, 8 are monoatomic - leaving 1 for Mogul analysis.

In the following table, the Counts columns list the number of bonds (or angles) for which Mogul statistics could be retrieved, the number of bonds (or angles) that are observed in the model and the number of bonds (or angles) that are defined in the Chemical Component Dictionary. The Link column lists molecule types, if any, to which the group is linked. The Z score for a bond length (or angle) is the number of standard deviations the observed value is removed from the expected value. A bond length (or angle) with $|Z| > 2$ is considered an outlier worth inspection. RMSZ is the root-mean-square of all Z scores of the bond lengths (or angles).

Mol	Type	Chain	Res	Link	Bond lengths			Bond angles		
					Counts	RMSZ	# $ Z > 2$	Counts	RMSZ	# $ Z > 2$
3	ADN	B	701	-	17,21,21	0.89	1 (5%)	17,31,31	1.35	4 (23%)

In the following table, the Chirals column lists the number of chiral outliers, the number of chiral centers analysed, the number of these observed in the model and the number defined in the Chemical Component Dictionary. Similar counts are reported in the Torsion and Rings columns. '-' means no outliers of that kind were identified.

Mol	Type	Chain	Res	Link	Chirals	Torsions	Rings
3	ADN	B	701	-	-	0/2/22/22	0/3/3/3

All (1) bond length outliers are listed below:

Mol	Chain	Res	Type	Atoms	Z	Observed(Å)	Ideal(Å)
3	B	701	ADN	C2-N3	2.55	1.36	1.32

All (4) bond angle outliers are listed below:

Mol	Chain	Res	Type	Atoms	Z	Observed(°)	Ideal(°)
3	B	701	ADN	N3-C2-N1	-2.87	124.78	128.67
3	B	701	ADN	C4'-O4'-C1'	2.16	111.91	109.92

Continued on next page...

Continued from previous page...

Mol	Chain	Res	Type	Atoms	Z	Observed(°)	Ideal(°)
3	B	701	ADN	C4-C5-N7	-2.08	107.14	109.34
3	B	701	ADN	N6-C6-N1	2.03	122.67	118.33

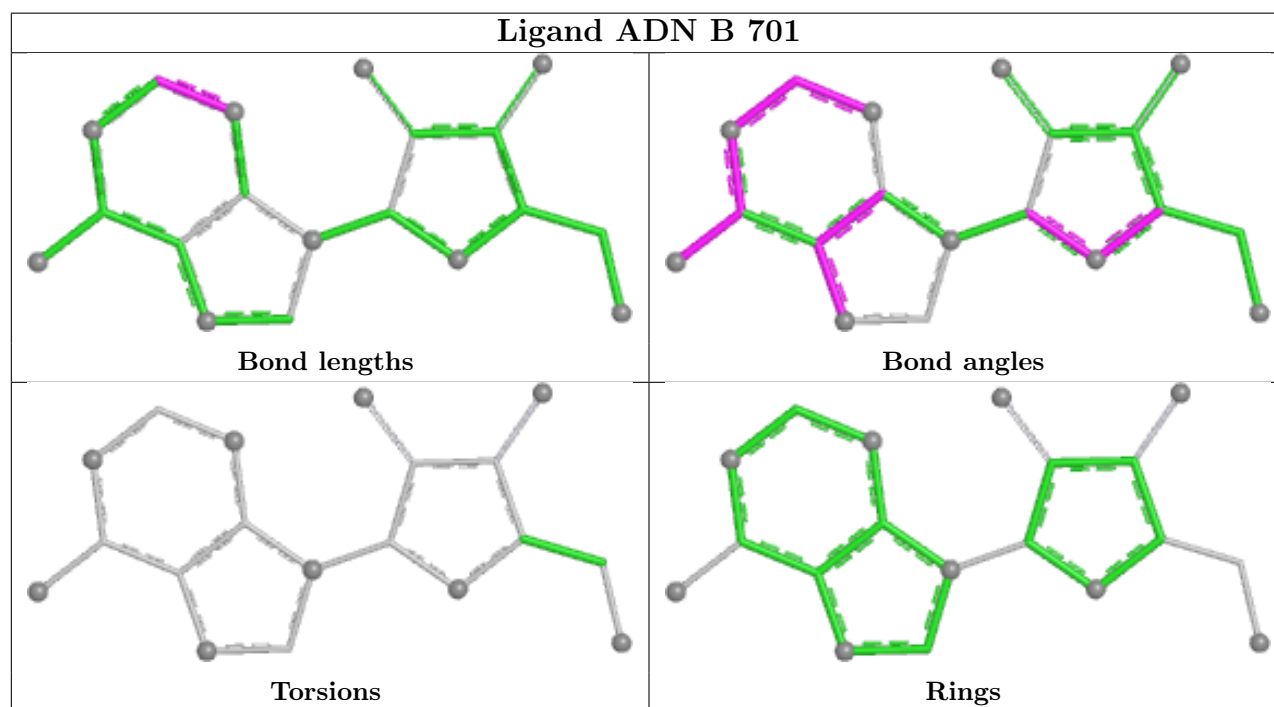
There are no chirality outliers.

There are no torsion outliers.

There are no ring outliers.

No monomer is involved in short contacts.

The following is a two-dimensional graphical depiction of Mogul quality analysis of bond lengths, bond angles, torsion angles, and ring geometry for all instances of the Ligand of Interest. In addition, ligands with molecular weight > 250 and outliers as shown on the validation Tables will also be included. For torsion angles, if less than 5% of the Mogul distribution of torsion angles is within 10 degrees of the torsion angle in question, then that torsion angle is considered an outlier. Any bond that is central to one or more torsion angles identified as an outlier by Mogul will be highlighted in the graph. For rings, the root-mean-square deviation (RMSD) between the ring in question and similar rings identified by Mogul is calculated over all ring torsion angles. If the average RMSD is greater than 60 degrees and the minimal RMSD between the ring in question and any Mogul-identified rings is also greater than 60 degrees, then that ring is considered an outlier. The outliers are highlighted in purple. The color gray indicates Mogul did not find sufficient equivalents in the CSD to analyse the geometry.



5.7 Other polymers ⓘ

There are no such residues in this entry.

5.8 Polymer linkage issues ⓘ

There are no chain breaks in this entry.

6 Fit of model and data [i](#)

6.1 Protein, DNA and RNA chains [i](#)

In the following table, the column labelled ‘#RSRZ > 2’ contains the number (and percentage) of RSRZ outliers, followed by percent RSRZ outliers for the chain as percentile scores relative to all X-ray entries and entries of similar resolution. The OWAB column contains the minimum, median, 95th percentile and maximum values of the occupancy-weighted average B-factor per residue. The column labelled ‘Q < 0.9’ lists the number of (and percentage) of residues with an average occupancy less than 0.9.

Mol	Chain	Analysed	<RSRZ>	#RSRZ>2	OWAB(Å ²)	Q<0.9
1	A	596/672 (88%)	-0.22	9 (1%) 71 71	55, 107, 167, 228	0
1	B	586/672 (87%)	-0.22	5 (0%) 81 80	59, 111, 183, 245	0
All	All	1182/1344 (87%)	-0.22	14 (1%) 76 75	55, 109, 176, 245	0

All (14) RSRZ outliers are listed below:

Mol	Chain	Res	Type	RSRZ
1	A	155	HIS	6.4
1	A	154	ASP	3.9
1	A	89	ALA	3.5
1	A	292	PRO	3.0
1	B	155	HIS	2.8
1	B	291	PRO	2.4
1	A	101	LYS	2.3
1	A	84	PHE	2.3
1	A	114	PHE	2.2
1	B	483	ALA	2.2
1	B	671	VAL	2.1
1	A	231	LEU	2.0
1	A	647	LEU	2.0
1	B	46	GLN	2.0

6.2 Non-standard residues in protein, DNA, RNA chains [i](#)

In the following table, the Atoms column lists the number of modelled atoms in the group and the number defined in the chemical component dictionary. The B-factors column lists the minimum, median, 95th percentile and maximum values of B factors of atoms in the group. The column labelled ‘Q < 0.9’ lists the number of atoms with occupancy less than 0.9.

Mol	Type	Chain	Res	Atoms	RSCC	RSR	B-factors(\AA^2)	Q<0.9
1	SEP	B	661	10/11	0.91	0.06	85,94,101,105	0
1	SEP	A	661	10/11	0.93	0.06	71,96,110,128	0
1	TPO	B	642	11/12	0.95	0.06	105,119,135,144	0
1	TPO	A	642	11/12	0.96	0.06	96,114,126,131	0
1	TPO	B	500	11/12	0.97	0.05	78,91,103,108	0
1	TPO	A	500	11/12	0.98	0.04	62,91,104,108	0

6.3 Carbohydrates [i](#)

There are no oligosaccharides in this entry.

6.4 Ligands [i](#)

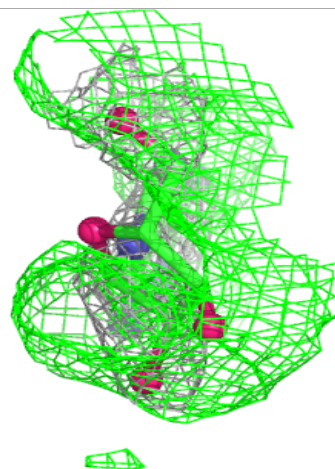
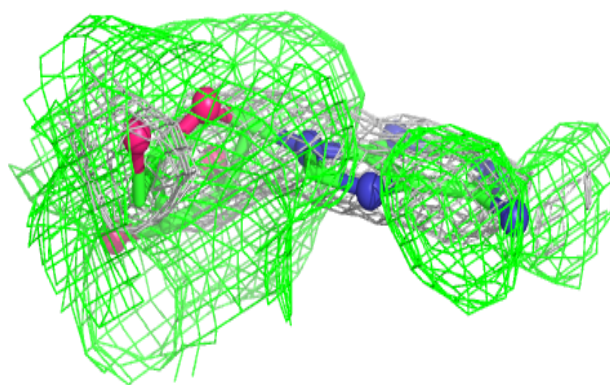
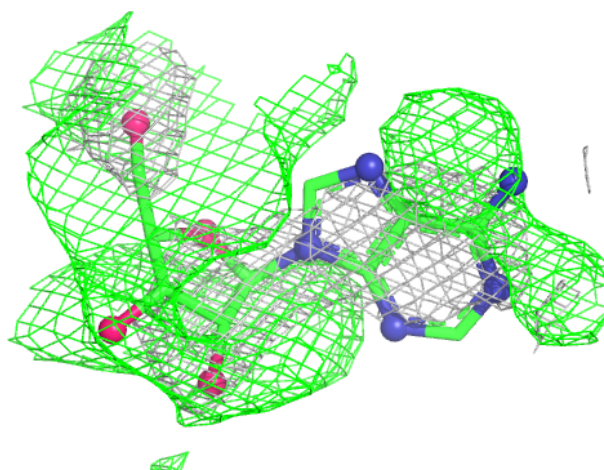
In the following table, the Atoms column lists the number of modelled atoms in the group and the number defined in the chemical component dictionary. The B-factors column lists the minimum, median, 95th percentile and maximum values of B factors of atoms in the group. The column labelled 'Q< 0.9' lists the number of atoms with occupancy less than 0.9.

Mol	Type	Chain	Res	Atoms	RSCC	RSR	B-factors(\AA^2)	Q<0.9
3	ADN	B	701	19/19	0.90	0.31	45,65,83,84	19
2	ZN	B	702	1/1	0.98	0.04	146,146,146,146	0
2	ZN	A	704	1/1	0.99	0.06	163,163,163,163	0
2	ZN	A	701	1/1	0.99	0.02	111,111,111,111	0
2	ZN	B	703	1/1	0.99	0.04	99,99,99,99	0
2	ZN	B	704	1/1	0.99	0.04	109,109,109,109	0
2	ZN	B	705	1/1	0.99	0.02	117,117,117,117	0
2	ZN	A	703	1/1	0.99	0.04	135,135,135,135	0
2	ZN	A	702	1/1	1.00	0.07	111,111,111,111	0

The following is a graphical depiction of the model fit to experimental electron density of all instances of the Ligand of Interest. In addition, ligands with molecular weight > 250 and outliers as shown on the geometry validation Tables will also be included. Each fit is shown from different orientation to approximate a three-dimensional view.

Electron density around ADN B 701:

$2mF_o-DF_c$ (at 0.7 rmsd) in gray
 mF_o-DF_c (at 3 rmsd) in purple (negative)
and green (positive)



6.5 Other polymers [i](#)

There are no such residues in this entry.