



# Full wwPDB X-ray Structure Validation Report ⓘ

Jun 15, 2024 – 06:53 PM EDT

PDB ID : 1SBE  
Title : SOYBEAN AGGLUTININ FROM GLYCINE MAX  
Authors : Dessen, A.; Olsen, L.R.; Gupta, D.; Sabesan, S.; Sacchettini, J.C.; Brewer, C.F.  
Deposited on : 1995-07-13  
Resolution : 2.80 Å(reported)

This is a Full wwPDB X-ray Structure Validation Report for a publicly released PDB entry.

We welcome your comments at [validation@mail.wwpdb.org](mailto:validation@mail.wwpdb.org)

A user guide is available at

<https://www.wwpdb.org/validation/2017/XrayValidationReportHelp>

with specific help available everywhere you see the ⓘ symbol.

The types of validation reports are described at

<http://www.wwpdb.org/validation/2017/FAQs#types>.

---

The following versions of software and data (see [references ⓘ](#)) were used in the production of this report:

MolProbity	:	4.02b-467
Mogul	:	2022.3.0, CSD as543be (2022)
Xtriage (Phenix)	:	1.20.1
EDS	:	2.37.1
Percentile statistics	:	20191225.v01 (using entries in the PDB archive December 25th 2019)
Refmac	:	5.8.0158
CCP4	:	7.0.044 (Gargrove)
Ideal geometry (proteins)	:	Engh & Huber (2001)
Ideal geometry (DNA, RNA)	:	Parkinson et al. (1996)
Validation Pipeline (wwPDB-VP)	:	2.37.1

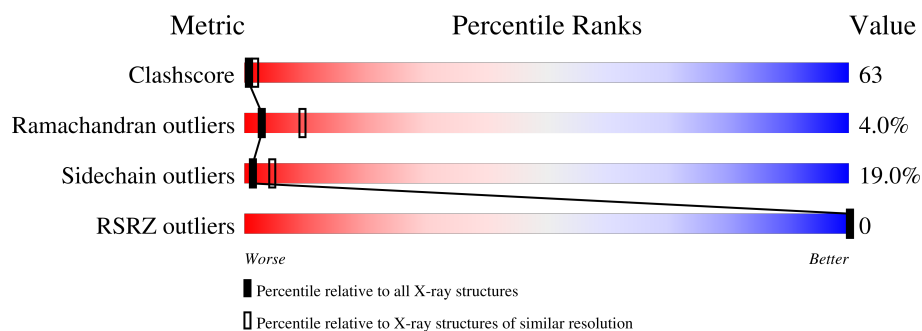
# 1 Overall quality at a glance

The following experimental techniques were used to determine the structure:

*X-RAY DIFFRACTION*

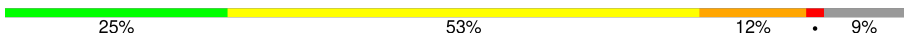
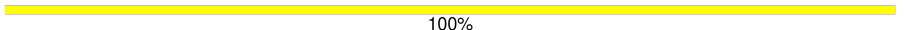
The reported resolution of this entry is 2.80 Å.

Percentile scores (ranging between 0-100) for global validation metrics of the entry are shown in the following graphic. The table shows the number of entries on which the scores are based.



Metric	Whole archive (#Entries)	Similar resolution (#Entries, resolution range(Å))
Clashscore	141614	3569 (2.80-2.80)
Ramachandran outliers	138981	3498 (2.80-2.80)
Sidechain outliers	138945	3500 (2.80-2.80)
RSRZ outliers	127900	3078 (2.80-2.80)

The table below summarises the geometric issues observed across the polymeric chains and their fit to the electron density. The red, orange, yellow and green segments of the lower bar indicate the fraction of residues that contain outliers for  $\geq 3$ , 2, 1 and 0 types of geometric quality criteria respectively. A grey segment represents the fraction of residues that are not modelled. The numeric value for each fraction is indicated below the corresponding segment, with a dot representing fractions  $\leq 5\%$ . The upper red bar (where present) indicates the fraction of residues that have poor fit to the electron density. The numeric value is given above the bar.

Mol	Chain	Length	Quality of chain
1	A	253	
2	B	2	

## 2 Entry composition [i](#)

There are 6 unique types of molecules in this entry. The entry contains 1713 atoms, of which 0 are hydrogens and 0 are deuteriums.

In the tables below, the ZeroOcc column contains the number of atoms modelled with zero occupancy, the AltConf column contains the number of residues with at least one atom in alternate conformation and the Trace column contains the number of residues modelled with at most 2 atoms.

- Molecule 1 is a protein called SOYBEAN AGGLUTININ.

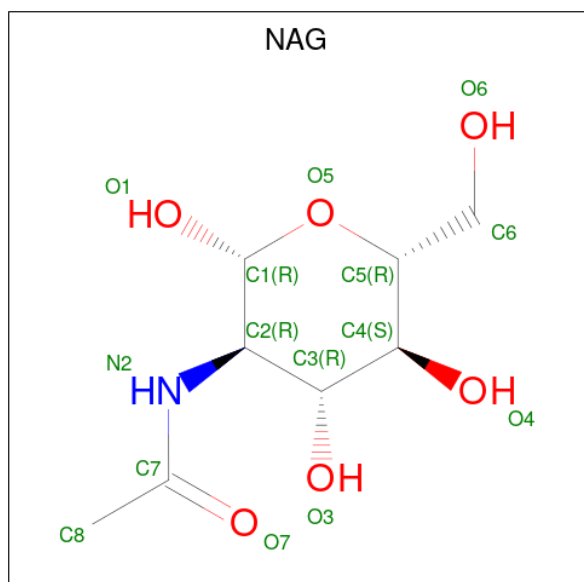
Mol	Chain	Residues	Atoms					ZeroOcc	AltConf	Trace
1	A	231	Total	C	N	O	S	0	0	0
			1652	1072	268	311	1			

- Molecule 2 is an oligosaccharide called beta-D-galactopyranose-(1-4)-2-acetamido-2-deoxy-beta-D-glucopyranose.



Mol	Chain	Residues	Atoms				ZeroOcc	AltConf	Trace
2	B	2	Total	C	N	O	0	0	0
			25	14	1	10			

- Molecule 3 is 2-acetamido-2-deoxy-beta-D-glucopyranose (three-letter code: NAG) (formula:  $C_8H_{15}NO_6$ ).



Mol	Chain	Residues	Atoms				ZeroOcc	AltConf
3	A	1	Total	C	N	O	0	0
			14	8	1	5		

- Molecule 4 is MANGANESE (II) ION (three-letter code: MN) (formula: Mn).

Mol	Chain	Residues	Atoms		ZeroOcc	AltConf
4	A	1	Total	Mn	0	0
			1	1		

- Molecule 5 is CALCIUM ION (three-letter code: CA) (formula: Ca).

Mol	Chain	Residues	Atoms		ZeroOcc	AltConf
5	A	1	Total	Ca	0	0
			1	1		

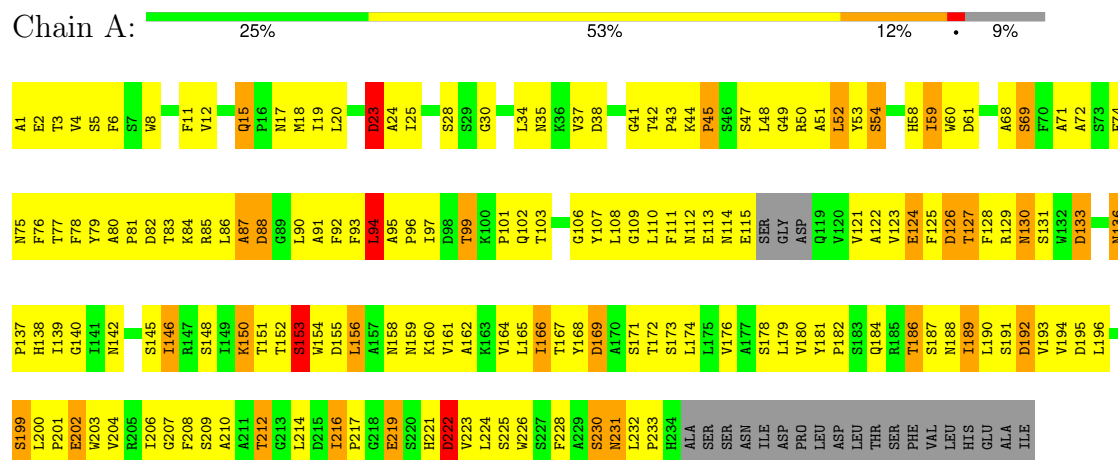
- Molecule 6 is water.

Mol	Chain	Residues	Atoms		ZeroOcc	AltConf
6	A	20	Total	O	0	0
			20	20		

### 3 Residue-property plots

These plots are drawn for all protein, RNA, DNA and oligosaccharide chains in the entry. The first graphic for a chain summarises the proportions of the various outlier classes displayed in the second graphic. The second graphic shows the sequence view annotated by issues in geometry and electron density. Residues are color-coded according to the number of geometric quality criteria for which they contain at least one outlier: green = 0, yellow = 1, orange = 2 and red = 3 or more. A red dot above a residue indicates a poor fit to the electron density ( $RSRZ > 2$ ). Stretches of 2 or more consecutive residues without any outlier are shown as a green connector. Residues present in the sample, but not in the model, are shown in grey.

#### • Molecule 1: SOYBEAN AGGLUTININ



#### • Molecule 2: beta-D-galactopyranose-(1-4)-2-acetamido-2-deoxy-beta-D-glucopyranose



## 4 Data and refinement statistics

Property	Value	Source
Space group	P 64 2 2	Depositor
Cell constants a, b, c, $\alpha$ , $\beta$ , $\gamma$	143.30Å 143.30Å 107.80Å 90.00° 90.00° 120.00°	Depositor
Resolution (Å)	99.00 – 2.80 16.27 – 2.50	Depositor EDS
% Data completeness (in resolution range)	84.0 (99.00-2.80) 72.1 (16.27-2.50)	Depositor EDS
$R_{merge}$	0.14	Depositor
$R_{sym}$	0.14	Depositor
$\langle I/\sigma(I) \rangle$ <sup>1</sup>	1.26 (at 2.49Å)	Xtriage
Refinement program	TNT 5E, X-PLOR	Depositor
R, $R_{free}$	0.212 , (Not available) 0.202 , (Not available)	Depositor DCC
$R_{free}$ test set	No test flags present.	wwPDB-VP
Wilson B-factor (Å <sup>2</sup> )	27.0	Xtriage
Anisotropy	0.770	Xtriage
Bulk solvent $k_{sol}$ (e/Å <sup>3</sup> ), $B_{sol}$ (Å <sup>2</sup> )	0.24 , 111.9	EDS
L-test for twinning <sup>2</sup>	$\langle  L  \rangle = 0.44$ , $\langle L^2 \rangle = 0.27$	Xtriage
Estimated twinning fraction	No twinning to report.	Xtriage
$F_o, F_c$ correlation	0.91	EDS
Total number of atoms	1713	wwPDB-VP
Average B, all atoms (Å <sup>2</sup> )	19.0	wwPDB-VP

Xtriage's analysis on translational NCS is as follows: *The largest off-origin peak in the Patterson function is 4.88% of the height of the origin peak. No significant pseudotranslation is detected.*

<sup>1</sup>Intensities estimated from amplitudes.

<sup>2</sup>Theoretical values of  $\langle |L| \rangle$ ,  $\langle L^2 \rangle$  for acentric reflections are 0.5, 0.333 respectively for untwinned datasets, and 0.375, 0.2 for perfectly twinned datasets.

## 5 Model quality

### 5.1 Standard geometry

Bond lengths and bond angles in the following residue types are not validated in this section: MN, NAG, CA, GAL

The Z score for a bond length (or angle) is the number of standard deviations the observed value is removed from the expected value. A bond length (or angle) with  $|Z| > 5$  is considered an outlier worth inspection. RMSZ is the root-mean-square of all Z scores of the bond lengths (or angles).

Mol	Chain	Bond lengths		Bond angles	
		RMSZ	$\# Z  > 5$	RMSZ	$\# Z  > 5$
1	A	0.87	3/1699 (0.2%)	1.42	19/2348 (0.8%)

Chiral center outliers are detected by calculating the chiral volume of a chiral center and verifying if the center is modelled as a planar moiety or with the opposite hand. A planarity outlier is detected by checking planarity of atoms in a peptide group, atoms in a mainchain group or atoms of a sidechain that are expected to be planar.

Mol	Chain	#Chirality outliers	#Planarity outliers
1	A	1	0

All (3) bond length outliers are listed below:

Mol	Chain	Res	Type	Atoms	Z	Observed(Å)	Ideal(Å)
1	A	2	GLU	CD-OE2	5.83	1.32	1.25
1	A	124	GLU	CD-OE1	5.24	1.31	1.25
1	A	219	GLU	CD-OE1	5.19	1.31	1.25

All (19) bond angle outliers are listed below:

Mol	Chain	Res	Type	Atoms	Z	Observed(°)	Ideal(°)
1	A	126	ASP	CB-CG-OD2	-8.16	110.95	118.30
1	A	23	ASP	CB-CG-OD2	-8.04	111.07	118.30
1	A	61	ASP	CB-CG-OD2	-7.84	111.24	118.30
1	A	133	ASP	CB-CG-OD1	-7.25	111.77	118.30
1	A	115	GLU	N-CA-C	6.87	129.55	111.00
1	A	169	ASP	CB-CG-OD2	-6.80	112.18	118.30
1	A	195	ASP	CB-CG-OD2	-6.78	112.20	118.30
1	A	222	ASP	CB-CG-OD2	-6.64	112.33	118.30
1	A	23	ASP	CB-CG-OD1	6.53	124.18	118.30
1	A	195	ASP	CB-CG-OD1	6.51	124.16	118.30

*Continued on next page...*

Continued from previous page...

Mol	Chain	Res	Type	Atoms	Z	Observed(°)	Ideal(°)
1	A	155	ASP	CB-CG-OD1	-6.31	112.62	118.30
1	A	172	THR	CA-CB-CG2	-5.97	104.04	112.40
1	A	126	ASP	CB-CG-OD1	5.80	123.52	118.30
1	A	99	THR	CA-CB-CG2	-5.60	104.56	112.40
1	A	231	ASN	N-CA-CB	5.58	120.65	110.60
1	A	222	ASP	CB-CG-OD1	5.56	123.30	118.30
1	A	94	LEU	CB-CA-C	-5.55	99.65	110.20
1	A	169	ASP	CB-CG-OD1	5.39	123.15	118.30
1	A	192	ASP	CB-CG-OD2	-5.19	113.63	118.30

All (1) chirality outliers are listed below:

Mol	Chain	Res	Type	Atom
1	A	115	GLU	CA

There are no planarity outliers.

## 5.2 Too-close contacts

In the following table, the Non-H and H(model) columns list the number of non-hydrogen atoms and hydrogen atoms in the chain respectively. The H(added) column lists the number of hydrogen atoms added and optimized by MolProbity. The Clashes column lists the number of clashes within the asymmetric unit, whereas Symm-Clashes lists symmetry-related clashes.

Mol	Chain	Non-H	H(model)	H(added)	Clashes	Symm-Clashes
1	A	1652	0	1481	201	0
2	B	25	0	22	0	0
3	A	14	0	13	0	0
4	A	1	0	0	0	0
5	A	1	0	0	0	0
6	A	20	0	0	7	0
All	All	1713	0	1516	201	0

The all-atom clashscore is defined as the number of clashes found per 1000 atoms (including hydrogen atoms). The all-atom clashscore for this structure is 63.

All (201) close contacts within the same asymmetric unit are listed below, sorted by their clash magnitude.

Atom-1	Atom-2	Interatomic distance (Å)	Clash overlap (Å)
1:A:90:LEU:HD23	1:A:91:ALA:N	1.83	0.93

Continued on next page...



*Continued from previous page...*

Atom-1	Atom-2	Interatomic distance (Å)	Clash overlap (Å)
1:A:127:THR:HG21	1:A:219:GLU:OE1	1.73	0.88
1:A:184:GLN:HB2	1:A:186:THR:HG23	1.56	0.87
1:A:78:PHE:CZ	1:A:156:LEU:HD12	2.12	0.84
1:A:107:TYR:HA	1:A:146:ILE:HD13	1.60	0.84
1:A:20:LEU:CD2	1:A:25:ILE:HA	2.08	0.83
1:A:87:ALA:HB1	1:A:88:ASP:HA	1.59	0.83
1:A:72:ALA:HB2	1:A:228:PHE:HD2	1.45	0.81
1:A:51:ALA:C	1:A:52:LEU:HD23	2.01	0.81
1:A:93:PHE:CB	1:A:122:ALA:HB2	2.13	0.79
1:A:20:LEU:HD22	1:A:25:ILE:HA	1.66	0.77
1:A:128:PHE:HB3	6:A:570:HOH:O	1.84	0.77
1:A:72:ALA:HB2	1:A:228:PHE:CD2	2.20	0.77
1:A:37:VAL:CG2	1:A:41:GLY:HA2	2.15	0.76
1:A:86:LEU:HD13	1:A:127:THR:HG22	1.66	0.76
1:A:93:PHE:HB3	1:A:122:ALA:HB2	1.66	0.76
1:A:162:ALA:HB2	1:A:181:TYR:CE1	2.21	0.76
1:A:86:LEU:HD22	1:A:127:THR:HG21	1.69	0.74
1:A:94:LEU:HD13	1:A:206:ILE:HG22	1.69	0.73
1:A:95:ALA:O	1:A:204:VAL:HB	1.89	0.72
1:A:124:GLU:HG2	1:A:142:ASN:HD21	1.56	0.71
1:A:48:LEU:C	1:A:48:LEU:HD23	2.11	0.70
1:A:78:PHE:CE2	1:A:156:LEU:HD12	2.26	0.70
1:A:196:LEU:N	1:A:196:LEU:HD23	2.06	0.70
1:A:222:ASP:OD1	1:A:222:ASP:N	2.25	0.69
1:A:110:LEU:HD21	1:A:209:SER:CB	2.22	0.69
1:A:206:ILE:HD12	1:A:226:TRP:HZ2	1.58	0.69
1:A:92:PHE:O	1:A:122:ALA:HB1	1.94	0.68
1:A:37:VAL:HG21	1:A:41:GLY:HA2	1.76	0.67
1:A:69:SER:HB3	1:A:168:TYR:O	1.93	0.67
1:A:93:PHE:HB3	1:A:122:ALA:CB	2.24	0.67
1:A:219:GLU:OE2	1:A:221:HIS:NE2	2.25	0.66
1:A:34:LEU:HD12	1:A:221:HIS:O	1.96	0.65
1:A:77:THR:HG22	1:A:78:PHE:N	2.12	0.65
1:A:174:LEU:HD12	1:A:192:ASP:C	2.18	0.64
1:A:79:TYR:CD1	1:A:80:ALA:N	2.65	0.64
1:A:199:SER:O	1:A:200:LEU:HG	1.98	0.64
1:A:124:GLU:OE2	1:A:126:ASP:HB2	1.98	0.63
1:A:206:ILE:HD12	1:A:226:TRP:CZ2	2.33	0.63
1:A:110:LEU:HD21	1:A:209:SER:HB3	1.80	0.63
1:A:158:ASN:ND2	1:A:159:ASN:H	1.96	0.62
1:A:82:ASP:O	1:A:84:LYS:N	2.32	0.62

*Continued on next page...*

*Continued from previous page...*

Atom-1	Atom-2	Interatomic distance (Å)	Clash overlap (Å)
1:A:164:VAL:CG2	1:A:179:LEU:HD12	2.30	0.62
1:A:219:GLU:O	1:A:219:GLU:HG2	1.99	0.62
1:A:87:ALA:CB	1:A:88:ASP:HA	2.22	0.61
1:A:101:PRO:C	1:A:102:GLN:HG2	2.20	0.61
1:A:37:VAL:HG23	1:A:41:GLY:HA2	1.81	0.61
1:A:123:VAL:HB	6:A:573:HOH:O	1.99	0.61
1:A:86:LEU:HD22	1:A:219:GLU:OE1	2.01	0.61
1:A:109:GLY:C	1:A:110:LEU:HD23	2.22	0.61
1:A:6:PHE:CE2	1:A:228:PHE:HB3	2.36	0.60
1:A:110:LEU:HB2	1:A:111:PHE:CD1	2.35	0.60
1:A:94:LEU:HD22	1:A:94:LEU:N	2.16	0.60
1:A:169:ASP:O	1:A:173:SER:N	2.35	0.60
1:A:52:LEU:HD23	1:A:52:LEU:N	2.14	0.60
1:A:94:LEU:N	1:A:94:LEU:CD2	2.66	0.59
1:A:158:ASN:ND2	1:A:159:ASN:N	2.51	0.58
1:A:124:GLU:CG	1:A:142:ASN:HD21	2.16	0.58
1:A:87:ALA:HB1	1:A:88:ASP:CA	2.32	0.58
1:A:42:THR:HG23	1:A:43:PRO:HD2	1.86	0.58
1:A:90:LEU:HD23	1:A:90:LEU:C	2.24	0.57
1:A:219:GLU:CD	1:A:221:HIS:HE2	2.05	0.57
1:A:129:ARG:NE	6:A:589:HOH:O	2.28	0.57
1:A:124:GLU:HG2	1:A:142:ASN:ND2	2.20	0.56
1:A:8:TRP:HZ3	1:A:11:PHE:HE1	1.53	0.56
1:A:74:PHE:HB2	1:A:225:SER:O	2.06	0.56
1:A:216:ILE:HB	1:A:217:PRO:HD2	1.88	0.55
1:A:219:GLU:HG2	1:A:221:HIS:NE2	2.21	0.55
1:A:37:VAL:HG23	1:A:38:ASP:N	2.20	0.55
1:A:95:ALA:HB1	1:A:96:PRO:HD2	1.90	0.54
1:A:201:PRO:O	1:A:203:TRP:N	2.41	0.54
1:A:110:LEU:HD23	1:A:110:LEU:N	2.22	0.54
1:A:107:TYR:HA	1:A:146:ILE:CD1	2.36	0.54
1:A:129:ARG:NH2	6:A:589:HOH:O	2.27	0.53
1:A:210:ALA:HB1	1:A:221:HIS:ND1	2.23	0.53
1:A:126:ASP:HB3	1:A:138:HIS:CE1	2.44	0.53
1:A:201:PRO:O	1:A:202:GLU:C	2.46	0.53
1:A:95:ALA:HB1	1:A:96:PRO:CD	2.39	0.53
1:A:152:THR:O	1:A:153:SER:C	2.47	0.53
1:A:154:TRP:NE1	1:A:156:LEU:HA	2.23	0.53
1:A:212:THR:HG22	1:A:217:PRO:O	2.08	0.53
1:A:224:LEU:N	1:A:224:LEU:HD23	2.22	0.52
1:A:103:THR:HB	1:A:107:TYR:HB2	1.90	0.52

*Continued on next page...*

*Continued from previous page...*

Atom-1	Atom-2	Interatomic distance (Å)	Clash overlap (Å)
1:A:180:VAL:HG22	1:A:187:SER:HB3	1.91	0.52
1:A:51:ALA:O	1:A:52:LEU:HD23	2.09	0.52
1:A:173:SER:O	1:A:193:VAL:HA	2.09	0.52
1:A:103:THR:O	1:A:109:GLY:HA2	2.08	0.52
1:A:12:VAL:O	1:A:15:GLN:HG2	2.10	0.52
1:A:121:VAL:O	1:A:122:ALA:HB2	2.09	0.52
1:A:128:PHE:CD2	1:A:130:ASN:ND2	2.79	0.51
1:A:123:VAL:HA	1:A:140:GLY:O	2.10	0.51
1:A:194:VAL:HG12	1:A:196:LEU:CD2	2.41	0.51
1:A:24:ALA:HA	1:A:34:LEU:HA	1.93	0.51
1:A:86:LEU:HD22	1:A:127:THR:CG2	2.39	0.51
1:A:8:TRP:CZ3	1:A:11:PHE:HE1	2.29	0.51
1:A:130:ASN:N	1:A:133:ASP:HB2	2.26	0.50
1:A:194:VAL:HG12	1:A:196:LEU:HD23	1.92	0.50
1:A:101:PRO:O	1:A:102:GLN:HG2	2.11	0.50
1:A:111:PHE:CE2	1:A:145:SER:N	2.80	0.50
1:A:20:LEU:HD23	1:A:24:ALA:C	2.32	0.49
1:A:80:ALA:HB2	1:A:219:GLU:CB	2.41	0.49
1:A:92:PHE:HB3	6:A:573:HOH:O	2.11	0.49
1:A:59:ILE:HG22	1:A:60:TRP:HD1	1.77	0.49
1:A:180:VAL:HG12	1:A:182:PRO:HD3	1.94	0.49
1:A:219:GLU:CG	1:A:221:HIS:NE2	2.75	0.49
1:A:8:TRP:CZ3	1:A:11:PHE:CE1	3.02	0.48
1:A:48:LEU:HD23	1:A:49:GLY:N	2.28	0.48
1:A:79:TYR:O	1:A:219:GLU:HA	2.14	0.48
1:A:158:ASN:HD22	1:A:159:ASN:H	1.60	0.48
1:A:37:VAL:HG23	1:A:41:GLY:CA	2.43	0.48
1:A:47:SER:O	1:A:48:LEU:HB2	2.14	0.48
1:A:167:THR:OG1	1:A:176:VAL:HB	2.14	0.48
1:A:106:GLY:O	1:A:146:ILE:HD11	2.14	0.47
1:A:128:PHE:HD2	1:A:130:ASN:ND2	2.12	0.47
1:A:15:GLN:HB2	1:A:17:ASN:OD1	2.14	0.47
1:A:79:TYR:HA	1:A:158:ASN:HD21	1.79	0.47
1:A:174:LEU:HD12	1:A:192:ASP:O	2.14	0.47
1:A:95:ALA:HB3	1:A:99:THR:HG21	1.96	0.47
1:A:219:GLU:CG	1:A:221:HIS:HE2	2.28	0.47
1:A:154:TRP:HE1	1:A:181:TYR:HE2	1.63	0.47
1:A:169:ASP:OD1	1:A:171:SER:OG	2.30	0.47
1:A:154:TRP:CE2	1:A:156:LEU:HB2	2.49	0.47
1:A:77:THR:CG2	1:A:78:PHE:N	2.78	0.47
1:A:44:LYS:O	1:A:45:PRO:O	2.32	0.47

*Continued on next page...*

*Continued from previous page...*

Atom-1	Atom-2	Interatomic distance (Å)	Clash overlap (Å)
1:A:68:ALA:HB1	1:A:231:ASN:O	2.15	0.47
1:A:112:ASN:C	1:A:114:ASN:H	2.18	0.47
1:A:136:ASN:O	1:A:137:PRO:C	2.53	0.46
1:A:178:SER:HA	1:A:188:ASN:O	2.15	0.46
1:A:74:PHE:HE1	1:A:76:PHE:HD2	1.63	0.46
1:A:19:ILE:O	1:A:51:ALA:HA	2.15	0.46
1:A:164:VAL:HG23	1:A:179:LEU:HD12	1.95	0.46
1:A:51:ALA:O	1:A:207:GLY:HA3	2.16	0.46
1:A:111:PHE:CD1	1:A:111:PHE:N	2.84	0.46
1:A:80:ALA:HA	1:A:81:PRO:HD3	1.73	0.46
1:A:154:TRP:CD1	1:A:154:TRP:C	2.89	0.46
1:A:94:LEU:O	1:A:200:LEU:HD21	2.17	0.45
1:A:150:LYS:HE3	1:A:191:SER:O	2.17	0.45
1:A:47:SER:HB3	1:A:212:THR:OG1	2.17	0.45
1:A:52:LEU:N	1:A:52:LEU:CD2	2.79	0.45
1:A:74:PHE:HE1	1:A:76:PHE:CD2	2.35	0.45
1:A:180:VAL:CG1	1:A:182:PRO:HD3	2.46	0.45
1:A:77:THR:HG22	1:A:78:PHE:H	1.79	0.45
1:A:82:ASP:C	1:A:84:LYS:H	2.20	0.45
1:A:161:VAL:CG1	1:A:162:ALA:N	2.79	0.45
1:A:23:ASP:N	1:A:23:ASP:OD1	2.50	0.45
1:A:23:ASP:N	1:A:48:LEU:O	2.42	0.45
1:A:164:VAL:HG22	1:A:179:LEU:HB2	1.99	0.45
1:A:1:ALA:HA	1:A:232:LEU:O	2.17	0.44
1:A:20:LEU:HD23	1:A:24:ALA:O	2.17	0.44
1:A:38:ASP:O	1:A:41:GLY:N	2.43	0.44
1:A:90:LEU:HD23	1:A:91:ALA:CA	2.47	0.44
1:A:93:PHE:HB2	1:A:122:ALA:HB2	1.93	0.44
1:A:78:PHE:CZ	1:A:156:LEU:CD1	2.94	0.44
1:A:223:VAL:C	1:A:224:LEU:HD23	2.37	0.44
1:A:34:LEU:O	1:A:35:ASN:ND2	2.43	0.44
1:A:130:ASN:HD22	1:A:130:ASN:HA	1.49	0.44
1:A:130:ASN:H	1:A:133:ASP:HB2	1.82	0.43
1:A:44:LYS:HA	1:A:45:PRO:HD3	1.82	0.43
1:A:71:ALA:HA	1:A:166:ILE:O	2.18	0.43
1:A:94:LEU:HD13	1:A:206:ILE:CG2	2.45	0.43
1:A:96:PRO:HB3	1:A:201:PRO:HG2	2.00	0.43
1:A:3:THR:HA	1:A:230:SER:O	2.18	0.43
1:A:4:VAL:HG22	1:A:5:SER:N	2.33	0.43
1:A:58:HIS:HD2	1:A:202:GLU:O	2.02	0.43
1:A:59:ILE:HA	1:A:59:ILE:HD13	1.40	0.43

*Continued on next page...*

*Continued from previous page...*

Atom-1	Atom-2	Interatomic distance (Å)	Clash overlap (Å)
1:A:99:THR:N	6:A:549:HOH:O	2.51	0.43
1:A:161:VAL:HG12	1:A:162:ALA:N	2.32	0.43
1:A:216:ILE:CB	1:A:217:PRO:CD	2.96	0.43
1:A:232:LEU:HA	1:A:233:PRO:HD2	1.60	0.43
1:A:59:ILE:HG22	1:A:60:TRP:CD1	2.54	0.43
1:A:86:LEU:HD13	1:A:127:THR:CG2	2.44	0.43
1:A:139:ILE:HG13	1:A:154:TRP:HB2	2.00	0.43
1:A:125:PHE:HB3	1:A:154:TRP:CZ3	2.54	0.42
1:A:86:LEU:O	1:A:87:ALA:HB2	2.19	0.42
1:A:82:ASP:O	1:A:85:ARG:N	2.52	0.42
1:A:137:PRO:HG2	1:A:156:LEU:HD22	2.00	0.42
1:A:52:LEU:HD22	1:A:207:GLY:HA3	2.00	0.42
1:A:53:TYR:O	1:A:54:SER:C	2.57	0.42
1:A:78:PHE:CD1	1:A:78:PHE:C	2.92	0.42
1:A:86:LEU:HB3	1:A:127:THR:HG22	2.00	0.42
1:A:103:THR:HB	1:A:107:TYR:CB	2.48	0.42
1:A:216:ILE:HB	1:A:217:PRO:CD	2.48	0.42
1:A:110:LEU:HB2	1:A:111:PHE:CE1	2.55	0.42
1:A:154:TRP:CE2	1:A:156:LEU:CB	3.02	0.42
1:A:20:LEU:CD2	1:A:25:ILE:CA	2.91	0.42
1:A:34:LEU:C	1:A:35:ASN:HD22	2.22	0.42
1:A:80:ALA:HB2	1:A:219:GLU:HB2	2.02	0.41
1:A:107:TYR:HD2	1:A:111:PHE:HB2	1.85	0.41
1:A:201:PRO:C	1:A:203:TRP:N	2.74	0.41
1:A:38:ASP:C	1:A:41:GLY:H	2.22	0.41
1:A:88:ASP:OD1	1:A:106:GLY:HA2	2.20	0.41
1:A:208:PHE:CD1	1:A:208:PHE:N	2.88	0.41
1:A:124:GLU:OE1	1:A:142:ASN:ND2	2.54	0.41
1:A:152:THR:HG22	1:A:190:LEU:HD13	2.02	0.41
1:A:200:LEU:HB3	1:A:201:PRO:HD2	2.03	0.41
1:A:74:PHE:CE1	1:A:76:PHE:HD2	2.38	0.41
1:A:156:LEU:HA	1:A:181:TYR:HE2	1.86	0.40
1:A:28:SER:C	1:A:30:GLY:H	2.24	0.40
1:A:158:ASN:C	1:A:160:LYS:H	2.24	0.40
1:A:189:ILE:N	6:A:584:HOH:O	2.32	0.40
1:A:126:ASP:HB3	1:A:138:HIS:NE2	2.36	0.40

There are no symmetry-related clashes.

## 5.3 Torsion angles [i](#)

### 5.3.1 Protein backbone [i](#)

In the following table, the Percentiles column shows the percent Ramachandran outliers of the chain as a percentile score with respect to all X-ray entries followed by that with respect to entries of similar resolution.

The Analysed column shows the number of residues for which the backbone conformation was analysed, and the total number of residues.

Mol	Chain	Analysed	Favoured	Allowed	Outliers	Percentiles
1	A	227/253 (90%)	192 (85%)	26 (12%)	9 (4%)	<b>3</b> <b>9</b>

All (9) Ramachandran outliers are listed below:

Mol	Chain	Res	Type
1	A	83	THR
1	A	45	PRO
1	A	54	SER
1	A	87	ALA
1	A	113	GLU
1	A	153	SER
1	A	202	GLU
1	A	130	ASN
1	A	136	ASN

### 5.3.2 Protein sidechains [i](#)

In the following table, the Percentiles column shows the percent sidechain outliers of the chain as a percentile score with respect to all X-ray entries followed by that with respect to entries of similar resolution.

The Analysed column shows the number of residues for which the sidechain conformation was analysed, and the total number of residues.

Mol	Chain	Analysed	Rotameric	Outliers	Percentiles
1	A	158/219 (72%)	128 (81%)	30 (19%)	<b>1</b> <b>4</b>

All (30) residues with a non-rotameric sidechain are listed below:

Mol	Chain	Res	Type
1	A	15	GLN
1	A	18	MET

*Continued on next page...*

*Continued from previous page...*

Mol	Chain	Res	Type
1	A	23	ASP
1	A	50	ARG
1	A	52	LEU
1	A	59	ILE
1	A	69	SER
1	A	75	ASN
1	A	88	ASP
1	A	94	LEU
1	A	97	ILE
1	A	108	LEU
1	A	127	THR
1	A	131	SER
1	A	146	ILE
1	A	148	SER
1	A	150	LYS
1	A	151	THR
1	A	153	SER
1	A	156	LEU
1	A	165	LEU
1	A	166	ILE
1	A	186	THR
1	A	189	ILE
1	A	199	SER
1	A	212	THR
1	A	214	LEU
1	A	216	ILE
1	A	222	ASP
1	A	230	SER

Sometimes sidechains can be flipped to improve hydrogen bonding and reduce clashes. All (3) such sidechains are listed below:

Mol	Chain	Res	Type
1	A	35	ASN
1	A	130	ASN
1	A	158	ASN

### 5.3.3 RNA ⓘ

There are no RNA molecules in this entry.

## 5.4 Non-standard residues in protein, DNA, RNA chains ⓘ

There are no non-standard protein/DNA/RNA residues in this entry.

## 5.5 Carbohydrates ⓘ

2 monosaccharides are modelled in this entry.

In the following table, the Counts columns list the number of bonds (or angles) for which Mogul statistics could be retrieved, the number of bonds (or angles) that are observed in the model and the number of bonds (or angles) that are defined in the Chemical Component Dictionary. The Link column lists molecule types, if any, to which the group is linked. The Z score for a bond length (or angle) is the number of standard deviations the observed value is removed from the expected value. A bond length (or angle) with  $|Z| > 2$  is considered an outlier worth inspection. RMSZ is the root-mean-square of all Z scores of the bond lengths (or angles).

Mol	Type	Chain	Res	Link	Bond lengths			Bond angles		
					Counts	RMSZ	$\# Z  > 2$	Counts	RMSZ	$\# Z  > 2$
2	NAG	B	1	2	14,14,15	0.89	0	17,19,21	2.46	7 (41%)
2	GAL	B	2	2	11,11,12	0.57	0	15,15,17	1.59	4 (26%)

In the following table, the Chirals column lists the number of chiral outliers, the number of chiral centers analysed, the number of these observed in the model and the number defined in the Chemical Component Dictionary. Similar counts are reported in the Torsion and Rings columns. '-' means no outliers of that kind were identified.

Mol	Type	Chain	Res	Link	Chirals	Torsions	Rings
2	NAG	B	1	2	-	4/6/23/26	0/1/1/1
2	GAL	B	2	2	-	0/2/19/22	0/1/1/1

There are no bond length outliers.

All (11) bond angle outliers are listed below:

Mol	Chain	Res	Type	Atoms	Z	Observed(°)	Ideal(°)
2	B	1	NAG	C4-C3-C2	-5.67	102.71	111.02
2	B	1	NAG	O5-C1-C2	-3.69	105.59	111.29
2	B	1	NAG	C2-N2-C7	-3.58	118.10	122.90
2	B	1	NAG	C1-C2-N2	3.58	116.07	110.43
2	B	1	NAG	O3-C3-C2	3.44	116.54	109.40
2	B	2	GAL	C1-O5-C5	2.86	116.01	112.19
2	B	2	GAL	O2-C2-C1	2.78	115.60	109.22
2	B	1	NAG	C3-C4-C5	-2.73	105.28	110.23
2	B	2	GAL	O3-C3-C4	2.59	116.49	110.38

*Continued on next page...*



*Continued from previous page...*

Mol	Chain	Res	Type	Atoms	Z	Observed(°)	Ideal(°)
2	B	2	GAL	O6-C6-C5	2.20	118.82	111.33
2	B	1	NAG	O4-C4-C5	2.04	114.34	109.32

There are no chirality outliers.

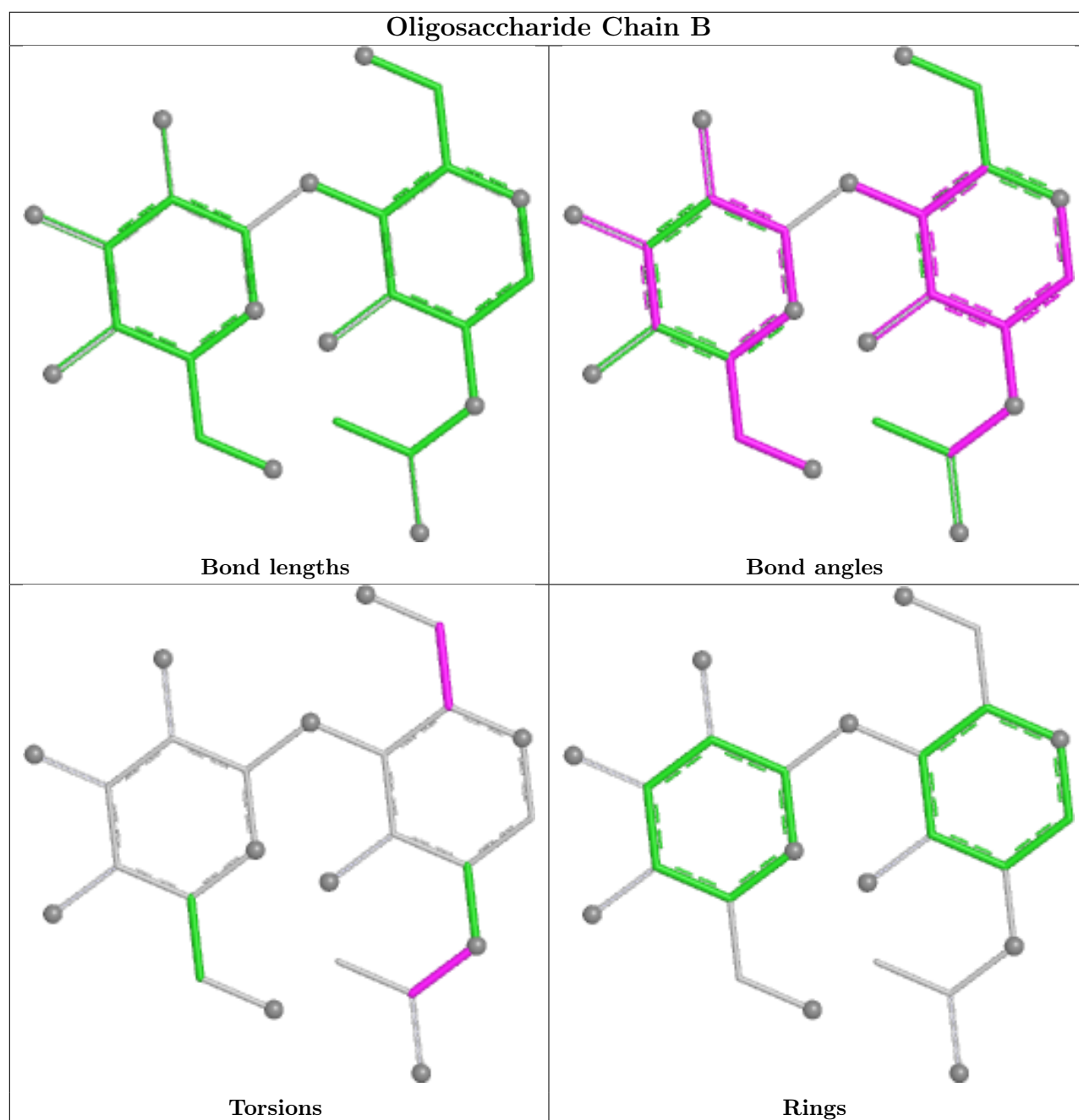
All (4) torsion outliers are listed below:

Mol	Chain	Res	Type	Atoms
2	B	1	NAG	C8-C7-N2-C2
2	B	1	NAG	O7-C7-N2-C2
2	B	1	NAG	O5-C5-C6-O6
2	B	1	NAG	C4-C5-C6-O6

There are no ring outliers.

No monomer is involved in short contacts.

The following is a two-dimensional graphical depiction of Mogul quality analysis of bond lengths, bond angles, torsion angles, and ring geometry for oligosaccharide.



## 5.6 Ligand geometry [i](#)

Of 3 ligands modelled in this entry, 2 are monoatomic - leaving 1 for Mogul analysis.

In the following table, the Counts columns list the number of bonds (or angles) for which Mogul statistics could be retrieved, the number of bonds (or angles) that are observed in the model and the number of bonds (or angles) that are defined in the Chemical Component Dictionary. The Link column lists molecule types, if any, to which the group is linked. The Z score for a bond length (or angle) is the number of standard deviations the observed value is removed from the expected value. A bond length (or angle) with  $|Z| > 2$  is considered an outlier worth inspection. RMSZ is the root-mean-square of all Z scores of the bond lengths (or angles).

Mol	Type	Chain	Res	Link	Bond lengths			Bond angles		
					Counts	RMSZ	# Z  > 2	Counts	RMSZ	# Z  > 2
3	NAG	A	544	1	14,14,15	1.14	1 (7%)	17,19,21	1.44	4 (23%)

In the following table, the Chirals column lists the number of chiral outliers, the number of chiral centers analysed, the number of these observed in the model and the number defined in the Chemical Component Dictionary. Similar counts are reported in the Torsion and Rings columns. '-' means no outliers of that kind were identified.

Mol	Type	Chain	Res	Link	Chirals	Torsions	Rings
3	NAG	A	544	1	-	2/6/23/26	0/1/1/1

All (1) bond length outliers are listed below:

Mol	Chain	Res	Type	Atoms	Z	Observed(Å)	Ideal(Å)
3	A	544	NAG	C1-C2	2.83	1.56	1.52

All (4) bond angle outliers are listed below:

Mol	Chain	Res	Type	Atoms	Z	Observed(°)	Ideal(°)
3	A	544	NAG	C3-C4-C5	-2.59	105.54	110.23
3	A	544	NAG	C2-N2-C7	-2.32	119.79	122.90
3	A	544	NAG	C8-C7-N2	-2.32	112.27	116.12
3	A	544	NAG	C4-C3-C2	-2.07	107.98	111.02

There are no chirality outliers.

All (2) torsion outliers are listed below:

Mol	Chain	Res	Type	Atoms
3	A	544	NAG	C4-C5-C6-O6
3	A	544	NAG	O5-C5-C6-O6

There are no ring outliers.

No monomer is involved in short contacts.

## 5.7 Other polymers ⓘ

There are no such residues in this entry.

## 5.8 Polymer linkage issues ⓘ

There are no chain breaks in this entry.

## 6 Fit of model and data [i](#)

### 6.1 Protein, DNA and RNA chains [i](#)

In the following table, the column labelled ‘#RSRZ> 2’ contains the number (and percentage) of RSRZ outliers, followed by percent RSRZ outliers for the chain as percentile scores relative to all X-ray entries and entries of similar resolution. The OWAB column contains the minimum, median, 95<sup>th</sup> percentile and maximum values of the occupancy-weighted average B-factor per residue. The column labelled ‘Q< 0.9’ lists the number of (and percentage) of residues with an average occupancy less than 0.9.

Mol	Chain	Analysed	<RSRZ>	#RSRZ>2	OWAB(Å <sup>2</sup> )	Q<0.9
1	A	231/253 (91%)	-1.26	0 <a href="#">100</a> <a href="#">100</a>	2, 17, 40, 74	0

There are no RSRZ outliers to report.

### 6.2 Non-standard residues in protein, DNA, RNA chains [i](#)

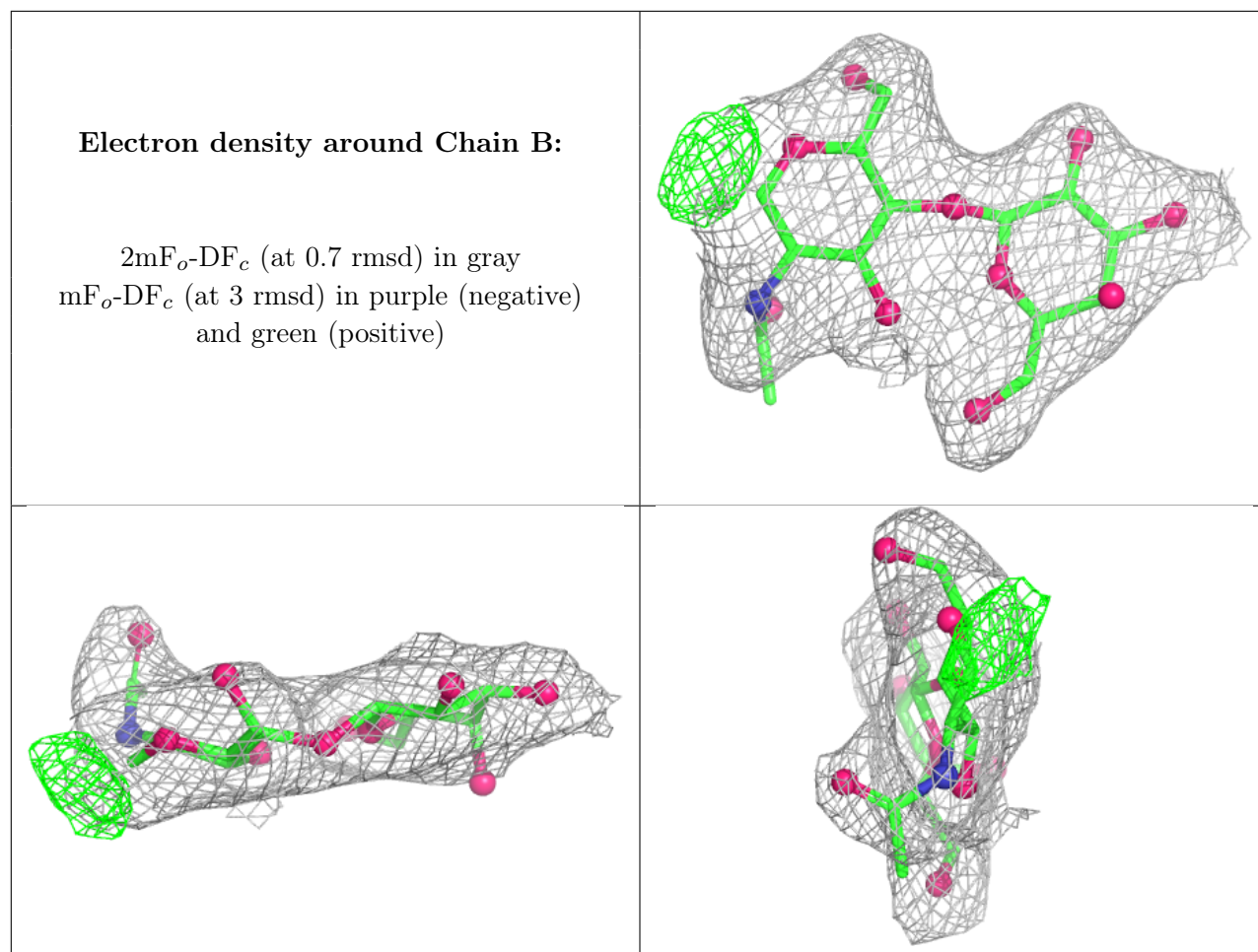
There are no non-standard protein/DNA/RNA residues in this entry.

### 6.3 Carbohydrates [i](#)

In the following table, the Atoms column lists the number of modelled atoms in the group and the number defined in the chemical component dictionary. The B-factors column lists the minimum, median, 95<sup>th</sup> percentile and maximum values of B factors of atoms in the group. The column labelled ‘Q< 0.9’ lists the number of atoms with occupancy less than 0.9.

Mol	Type	Chain	Res	Atoms	RSCC	RSR	B-factors(Å <sup>2</sup> )	Q<0.9
2	NAG	B	1	14/15	0.96	0.09	7,46,100,100	0
2	GAL	B	2	11/12	0.98	0.06	1,28,61,97	0

The following is a graphical depiction of the model fit to experimental electron density for oligosaccharide. Each fit is shown from different orientation to approximate a three-dimensional view.



## 6.4 Ligands [i](#)

In the following table, the Atoms column lists the number of modelled atoms in the group and the number defined in the chemical component dictionary. The B-factors column lists the minimum, median, 95<sup>th</sup> percentile and maximum values of B factors of atoms in the group. The column labelled 'Q< 0.9' lists the number of atoms with occupancy less than 0.9.

Mol	Type	Chain	Res	Atoms	RSCC	RSR	B-factors( $\text{\AA}^2$ )	Q<0.9
3	NAG	A	544	14/15	0.97	0.08	12,31,82,100	0
5	CA	A	541	1/1	0.97	0.05	20,20,20,20	0
4	MN	A	540	1/1	0.98	0.05	28,28,28,28	0

## 6.5 Other polymers [i](#)

There are no such residues in this entry.