



## Full wwPDB EM Validation Report ⓘ

Nov 26, 2025 – 12:32 pm GMT

PDB ID : 9RCV / pdb\_00009rcv  
EMDB ID : EMD-53923  
Title : Structure of the Human Peptide-Loading Complex Arrested by HCMV US6  
Authors : Stolz, M.; Susac, L.; Trowitzsch, S.; Tampe, R.  
Deposited on : 2025-05-29  
Resolution : 2.70 Å(reported)

This is a Full wwPDB EM Validation Report for a publicly released PDB entry.

We welcome your comments at [validation@mail.wwpdb.org](mailto:validation@mail.wwpdb.org)

A user guide is available at

<https://www.wwpdb.org/validation/2017/EMValidationReportHelp>

with specific help available everywhere you see the ⓘ symbol.

The types of validation reports are described at

<http://www.wwpdb.org/validation/2017/FAQs#types>.

---

The following versions of software and data (see [references ⓘ](#)) were used in the production of this report:

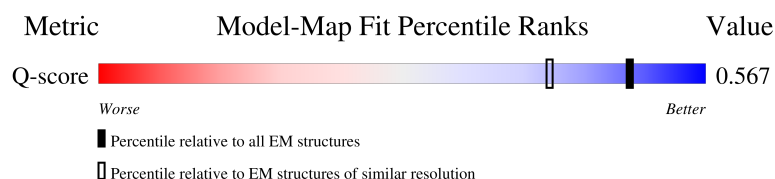
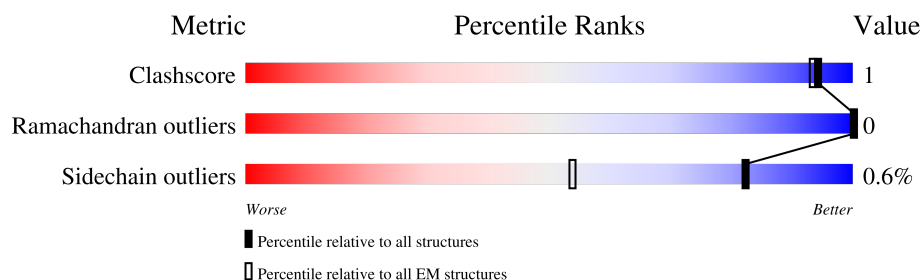
EMDB validation analysis : 0.0.1.dev129  
Mogul : 1.8.4, CSD as541be (2020)  
MolProbity : 4-5-2 with Phenix2.0  
buster-report : 1.1.7 (2018)  
Percentile statistics : 20231227.v01 (using entries in the PDB archive December 27th 2023)  
EM percentile statistics : 202505.v01 (Using data in the EMDB archive up until May 2025)  
MapQ : 1.9.13  
Ideal geometry (proteins) : Engh & Huber (2001)  
Ideal geometry (DNA, RNA) : Parkinson et al. (1996)  
Validation Pipeline (wwPDB-VP) : 2.46

# 1 Overall quality at a glance

The following experimental techniques were used to determine the structure:  
*ELECTRON MICROSCOPY*

The reported resolution of this entry is 2.70 Å.

Percentile scores (ranging between 0-100) for global validation metrics of the entry are shown in the following graphic. The table shows the number of entries on which the scores are based.




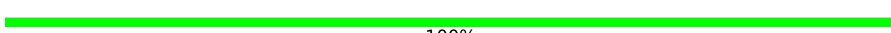
Metric	Whole archive (#Entries)	EM structures (#Entries)	Similar EM resolution (#Entries, resolution range(Å))
Clashscore	210492	15764	-
Ramachandran outliers	207382	16835	-
Sidechain outliers	206894	16415	-
Q-score	-	25397	10327 ( 2.20 - 3.20 )

The table below summarises the geometric issues observed across the polymeric chains and their fit to the map. The red, orange, yellow and green segments of the bar indicate the fraction of residues that contain outliers for  $\geq 3$ , 2, 1 and 0 types of geometric quality criteria respectively. A grey segment represents the fraction of residues that are not modelled. The numeric value for each fraction is indicated below the corresponding segment, with a dot representing fractions  $\leq 5\%$ . The upper red bar (where present) indicates the fraction of residues that have poor fit to the EM map (all-atom inclusion  $< 40\%$ ). The numeric value is given above the bar.

Mol	Chain	Length	Quality of chain
1	A	748	<div> <div>19%</div> <div>93%</div> <div>.</div> <div>.</div> </div>
2	B	448	<div> <div>8%</div> <div>85%</div> <div>.</div> <div>13%</div> </div>
2	F	448	<div> <div>9%</div> <div>86%</div> <div>.</div> <div>10%</div> </div>
3	C	362	<div> <div>5%</div> <div>75%</div> <div>.</div> <div>24%</div> </div>

Continued on next page...

*Continued from previous page...*

Mol	Chain	Length	Quality of chain
3	G	362	 75% 24%
4	D	119	 79% 17%
4	H	119	 76% 8% 17%
5	E	677	 14% 94% . .
6	I	183	 37% 61%
7	J	2	 100%
7	K	2	 100%

## 2 Entry composition

There are 12 unique types of molecules in this entry. The entry contains 23529 atoms, of which 0 are hydrogens and 0 are deuteriums.

In the tables below, the AltConf column contains the number of residues with at least one atom in alternate conformation and the Trace column contains the number of residues modelled with at most 2 atoms.

- Molecule 1 is a protein called Antigen peptide transporter 1.

Mol	Chain	Residues	Atoms					AltConf	Trace
1	A	719	Total	C	N	O	S	0	0
			5509	3541	939	1010	19		

There is a discrepancy between the modelled and reference sequences:

Chain	Residue	Modelled	Actual	Comment	Reference
A	419	CYS	GLY	variant	UNP Q03518

- Molecule 2 is a protein called Tapasin.

Mol	Chain	Residues	Atoms					AltConf	Trace
2	B	388	Total	C	N	O	S	0	0
			2943	1893	513	526	11		
2	F	402	Total	C	N	O	S	0	0
			3040	1952	529	548	11		

There are 2 discrepancies between the modelled and reference sequences:

Chain	Residue	Modelled	Actual	Comment	Reference
B	240	ARG	THR	variant	UNP O15533
F	240	ARG	THR	variant	UNP O15533

- Molecule 3 is a protein called MHC class I antigen.

Mol	Chain	Residues	Atoms					AltConf	Trace
3	C	274	Total	C	N	O	S	0	0
			2246	1394	412	434	6		
3	G	274	Total	C	N	O	S	0	0
			2246	1394	412	434	6		

- Molecule 4 is a protein called Beta-2-microglobulin.

Mol	Chain	Residues	Atoms					AltConf	Trace
4	D	99	Total	C	N	O	S	0	0
			829	528	140	158	3		
4	H	99	Total	C	N	O	S	0	0
			829	528	140	158	3		

- Molecule 5 is a protein called Antigen peptide transporter 2.

Mol	Chain	Residues	Atoms					AltConf	Trace
5	E	667	Total	C	N	O	S	0	0
			5180	3321	904	931	24		

- Molecule 6 is a protein called Unique short US6 glycoprotein.

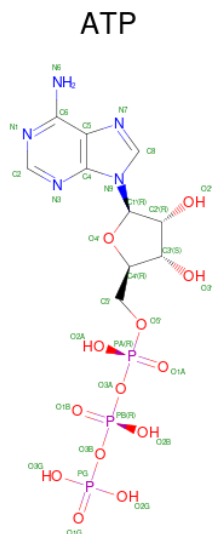
Mol	Chain	Residues	Atoms					AltConf	Trace
6	I	71	Total	C	N	O	S	0	0
			559	361	100	90	8		

- Molecule 7 is an oligosaccharide called 2-acetamido-2-deoxy-beta-D-glucopyranose-(1-4)-2-acetamido-2-deoxy-beta-D-glucopyranose.



Mol	Chain	Residues	Atoms				AltConf	Trace
7	J	2	Total	C	N	O	0	0
			28	16	2	10		
7	K	2	Total	C	N	O	0	0
			28	16	2	10		

- Molecule 8 is ADENOSINE-5'-TRIPHOSPHATE (CCD ID: ATP) (formula: C<sub>10</sub>H<sub>16</sub>N<sub>5</sub>O<sub>13</sub>P<sub>3</sub>) (labeled as "Ligand of Interest" by depositor).



Mol	Chain	Residues	Atoms					AltConf
8	A	1	Total	C	N	O	P	0
			31	10	5	13	3	

- Molecule 9 is MAGNESIUM ION (CCD ID: MG) (formula: Mg) (labeled as "Ligand of Interest" by depositor).

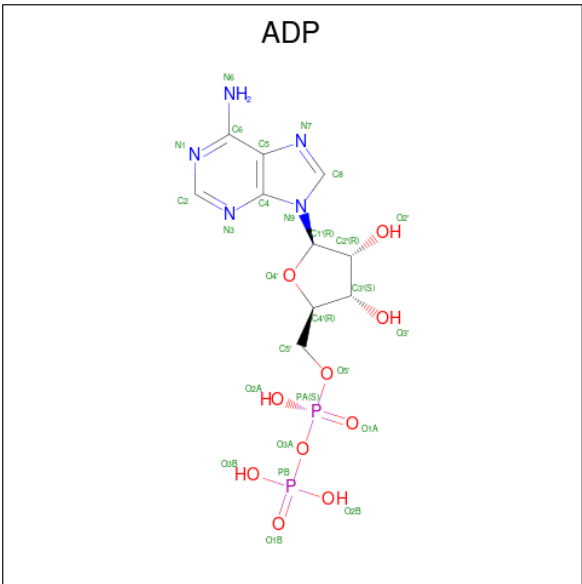
Mol	Chain	Residues	Atoms	AltConf
9	A	1	Total Mg 1 1	0
9	E	1	Total Mg 1 1	0

- Molecule 10 is 2-acetamido-2-deoxy-beta-D-glucopyranose (CCD ID: NAG) (formula:  $\text{C}_8\text{H}_{15}\text{NO}_6$ ) (labeled as "Ligand of Interest" by depositor).



Mol	Chain	Residues	Atoms				AltConf
10	C	1	Total	C	N	O	0
			14	8	1	5	
10	G	1	Total	C	N	O	0
			14	8	1	5	

- Molecule 11 is ADENOSINE-5'-DIPHOSPHATE (CCD ID: ADP) (formula: C<sub>10</sub>H<sub>15</sub>N<sub>5</sub>O<sub>10</sub>P<sub>2</sub>) (labeled as "Ligand of Interest" by depositor).



Mol	Chain	Residues	Atoms					AltConf
11	E	1	Total	C	N	O	P	0
			27	10	5	10	2	

- Molecule 12 is water.

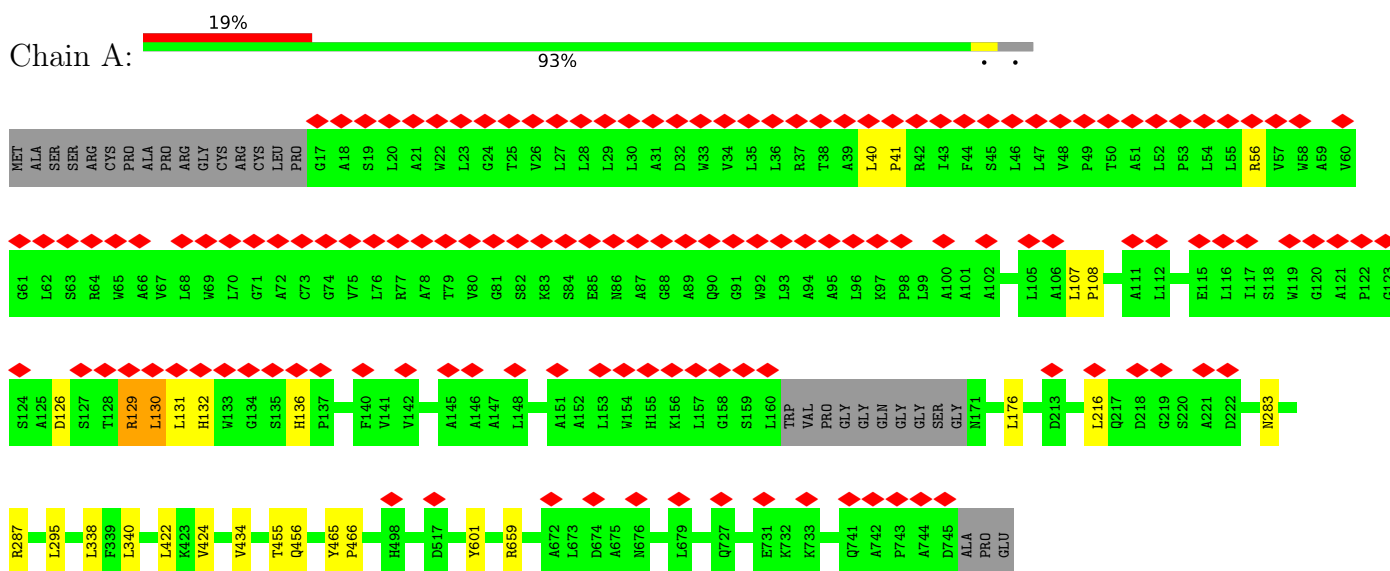
Mol	Chain	Residues	Atoms		AltConf
12	A	2	Total 2	O 2	0
12	E	2	Total 2	O 2	0



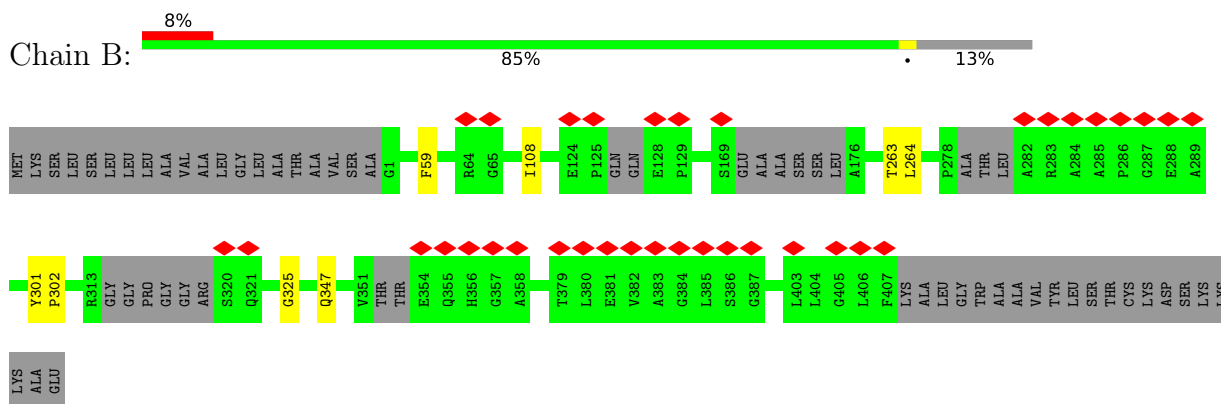
### 3 Residue-property plots

These plots are drawn for all protein, RNA, DNA and oligosaccharide chains in the entry. The first graphic for a chain summarises the proportions of the various outlier classes displayed in the second graphic. The second graphic shows the sequence view annotated by issues in geometry and atom inclusion in map density. Residues are color-coded according to the number of geometric quality criteria for which they contain at least one outlier: green = 0, yellow = 1, orange = 2 and red = 3 or more. A red diamond above a residue indicates a poor fit to the EM map for this residue (all-atom inclusion < 40%). Stretches of 2 or more consecutive residues without any outlier are shown as a green connector. Residues present in the sample, but not in the model, are shown in grey.

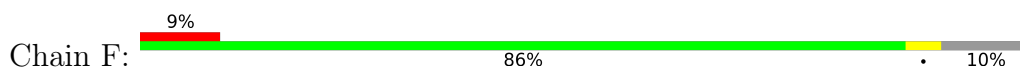
#### • Molecule 1: Antigen peptide transporter 1

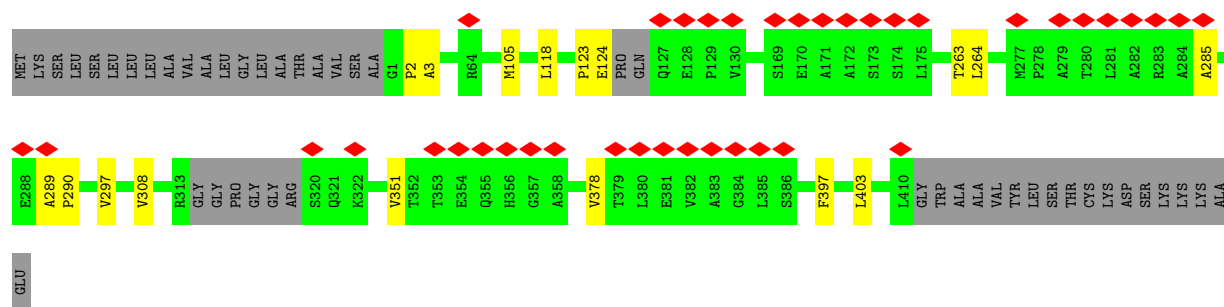


#### • Molecule 2: Tapasin

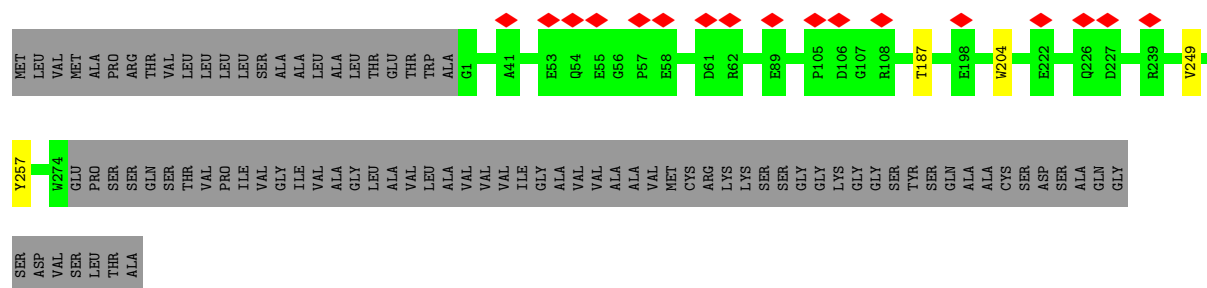
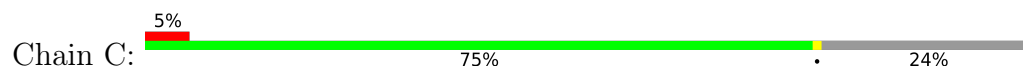


#### • Molecule 2: Tapasin

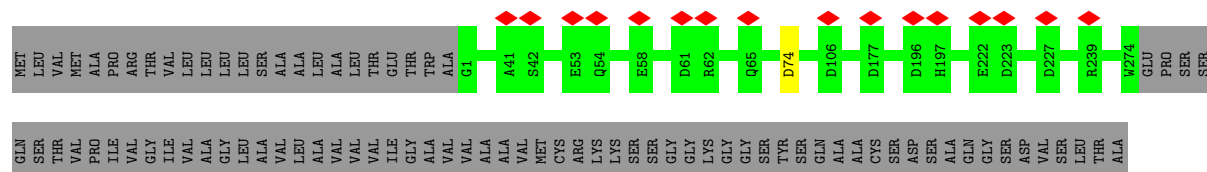
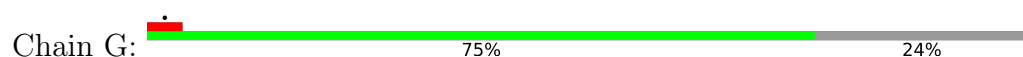




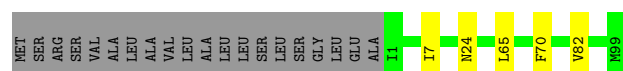
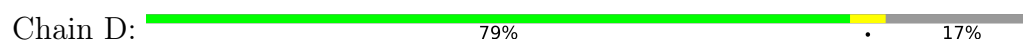
- Molecule 3: MHC class I antigen



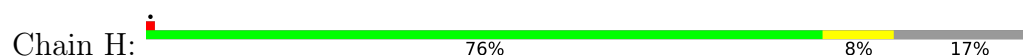
- Molecule 3: MHC class I antigen



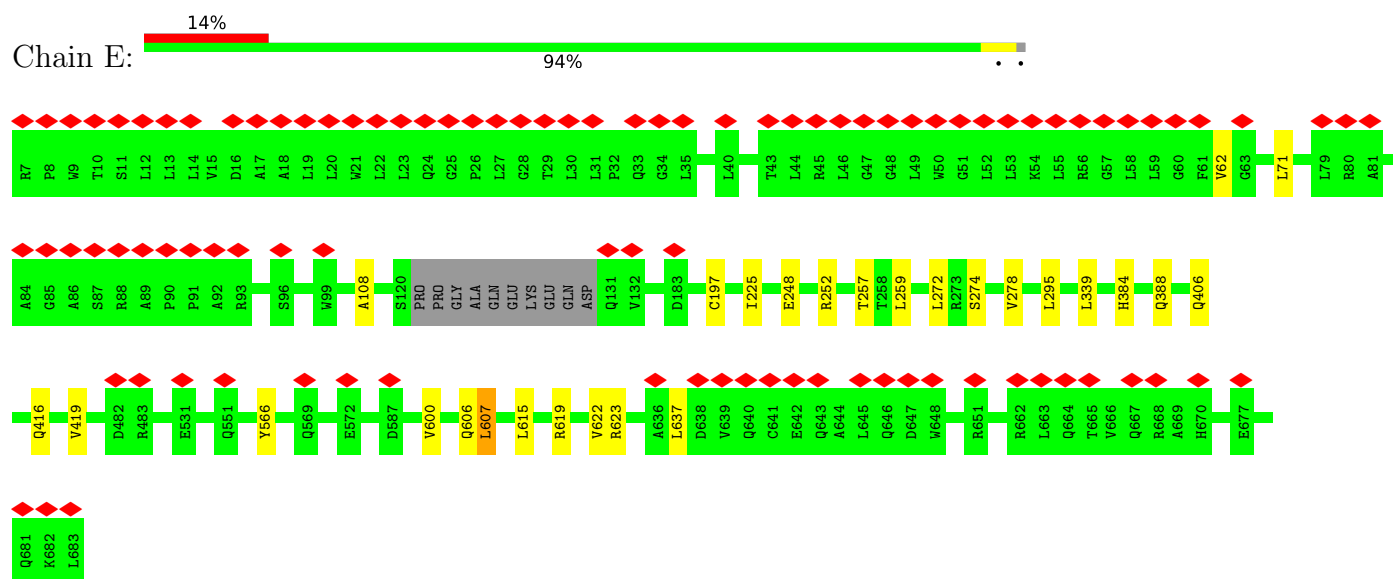
- Molecule 4: Beta-2-microglobulin



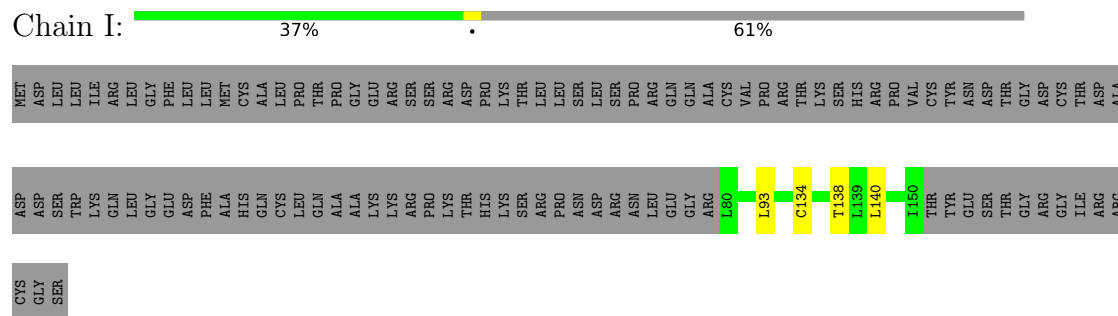
- Molecule 4: Beta-2-microglobulin



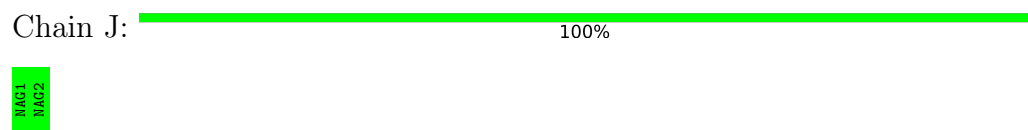
- Molecule 5: Antigen peptide transporter 2



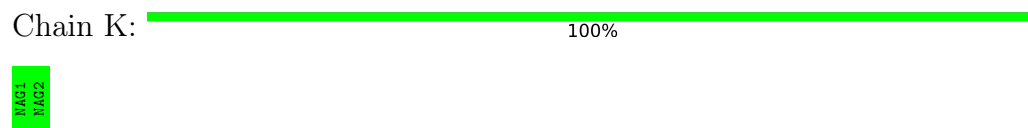
- Molecule 6: Unique short US6 glycoprotein



- Molecule 7: 2-acetamido-2-deoxy-beta-D-glucopyranose-(1-4)-2-acetamido-2-deoxy-beta-D-glucopyranose



- Molecule 7: 2-acetamido-2-deoxy-beta-D-glucopyranose-(1-4)-2-acetamido-2-deoxy-beta-D-glucopyranose



## 4 Experimental information

Property	Value	Source
EM reconstruction method	SINGLE PARTICLE	Depositor
Imposed symmetry	POINT, C1	Depositor
Number of particles used	269213	Depositor
Resolution determination method	OTHER	Depositor
CTF correction method	PHASE FLIPPING AND AMPLITUDE CORRECTION	Depositor
Microscope	TFS KRIOS	Depositor
Voltage (kV)	300	Depositor
Electron dose ( $e^-/\text{\AA}^2$ )	58.0	Depositor
Minimum defocus (nm)	500	Depositor
Maximum defocus (nm)	1500	Depositor
Magnification	60241	Depositor
Image detector	GATAN K3 (6k x 4k)	Depositor
Maximum map value	0.924	Depositor
Minimum map value	-0.042	Depositor
Average map value	0.008	Depositor
Map value standard deviation	0.017	Depositor
Recommended contour level	0.11	Depositor
Map size ( $\text{\AA}$ )	424.96, 424.96, 424.96	wwPDB
Map dimensions	512, 512, 512	wwPDB
Map angles ( $^\circ$ )	90.0, 90.0, 90.0	wwPDB
Pixel spacing ( $\text{\AA}$ )	0.83, 0.83, 0.83	Depositor

## 5 Model quality [i](#)

### 5.1 Standard geometry [i](#)

Bond lengths and bond angles in the following residue types are not validated in this section: MG, ATP, NAG, ADP

The Z score for a bond length (or angle) is the number of standard deviations the observed value is removed from the expected value. A bond length (or angle) with  $|Z| > 5$  is considered an outlier worth inspection. RMSZ is the root-mean-square of all Z scores of the bond lengths (or angles).

Mol	Chain	Bond lengths		Bond angles	
		RMSZ	# $ Z  > 5$	RMSZ	# $ Z  > 5$
1	A	0.13	0/5623	0.26	0/7655
2	B	0.12	0/3039	0.26	0/4161
2	F	0.12	0/3138	0.27	0/4300
3	C	0.12	0/2308	0.25	0/3135
3	G	0.12	0/2308	0.26	0/3135
4	D	0.12	0/852	0.27	0/1152
4	H	0.13	0/852	0.28	0/1152
5	E	0.12	0/5286	0.25	0/7179
6	I	0.13	0/569	0.24	0/774
All	All	0.12	0/23975	0.26	0/32643

There are no bond length outliers.

There are no bond angle outliers.

There are no chirality outliers.

There are no planarity outliers.

### 5.2 Too-close contacts [i](#)

In the following table, the Non-H and H(model) columns list the number of non-hydrogen atoms and hydrogen atoms in the chain respectively. The H(added) column lists the number of hydrogen atoms added and optimized by MolProbity. The Clashes column lists the number of clashes within the asymmetric unit, whereas Symm-Clashes lists symmetry-related clashes.

Mol	Chain	Non-H	H(model)	H(added)	Clashes	Symm-Clashes
1	A	5509	0	5623	13	0
2	B	2943	0	2905	5	0
2	F	3040	0	3012	12	0
3	C	2246	0	2091	2	0

*Continued on next page...*

*Continued from previous page...*

Mol	Chain	Non-H	H(model)	H(added)	Clashes	Symm-Clashes
3	G	2246	0	2091	0	0
4	D	829	0	794	2	0
4	H	829	0	794	5	0
5	E	5180	0	5288	16	0
6	I	559	0	583	3	0
7	J	28	0	25	0	0
7	K	28	0	25	0	0
8	A	31	0	12	0	0
9	A	1	0	0	0	0
9	E	1	0	0	0	0
10	C	14	0	13	0	0
10	G	14	0	13	0	0
11	E	27	0	12	0	0
12	A	2	0	0	0	0
12	E	2	0	0	0	0
All	All	23529	0	23281	52	0

The all-atom clashscore is defined as the number of clashes found per 1000 atoms (including hydrogen atoms). The all-atom clashscore for this structure is 1.

All (52) close contacts within the same asymmetric unit are listed below, sorted by their clash magnitude.

Atom-1	Atom-2	Interatomic distance (Å)	Clash overlap (Å)
4:H:87:LEU:HD12	4:H:87:LEU:O	2.05	0.57
1:A:422:LEU:HD23	1:A:455:THR:HG22	1.87	0.56
4:H:24:ASN:HB3	4:H:65:LEU:HD11	1.90	0.52
4:H:25:CYS:HB2	4:H:39:LEU:HD21	1.93	0.51
5:E:606:GLN:O	5:E:607:LEU:HD12	2.12	0.50
2:F:105:MET:HE2	2:F:118:LEU:HD21	1.93	0.50
4:H:84:HIS:H	4:H:87:LEU:HD11	1.77	0.49
1:A:56:ARG:HB3	1:A:130:LEU:HD13	1.96	0.48
3:C:249:VAL:HG13	3:C:257:TYR:CE1	2.49	0.47
2:F:2:PRO:O	2:F:3:ALA:HB3	2.15	0.47
1:A:338:LEU:HD11	1:A:422:LEU:HD22	1.95	0.47
5:E:71:LEU:HB2	2:F:403:LEU:HD13	1.97	0.47
2:F:297:VAL:HG23	2:F:297:VAL:O	2.14	0.47
5:E:62:VAL:HG12	5:E:62:VAL:O	2.14	0.47
2:F:263:THR:C	2:F:264:LEU:HD12	2.40	0.47
1:A:216:LEU:HD22	5:E:406:GLN:HB3	1.97	0.46
5:E:619:ARG:O	5:E:622:VAL:HG12	2.16	0.46
1:A:465:TYR:HB3	1:A:466:PRO:HD3	1.96	0.46

*Continued on next page...*

*Continued from previous page...*

Atom-1	Atom-2	Interatomic distance (Å)	Clash overlap (Å)
4:D:7:ILE:HG12	4:D:82:VAL:HG21	1.98	0.46
5:E:416:GLN:HA	5:E:419:VAL:HG22	1.96	0.45
1:A:424:VAL:HG21	5:E:197:CYS:SG	2.55	0.45
2:B:59:PHE:HZ	2:B:108:ILE:HG21	1.80	0.45
5:E:274:SER:O	5:E:278:VAL:HG13	2.17	0.45
6:I:134:CYS:O	6:I:138:THR:HG23	2.17	0.45
2:F:285:ALA:HB1	2:F:351:VAL:HG23	1.99	0.44
2:F:289:ALA:N	2:F:290:PRO:HD3	2.32	0.44
5:E:600:VAL:HG13	5:E:607:LEU:HD13	2.00	0.44
3:C:187:THR:HA	3:C:204:TRP:O	2.17	0.43
2:F:123:PRO:O	2:F:124:GLU:C	2.62	0.43
2:B:59:PHE:CZ	2:B:108:ILE:HG21	2.54	0.43
1:A:283:ASN:O	1:A:287:ARG:HG2	2.19	0.43
2:B:263:THR:C	2:B:264:LEU:HD12	2.44	0.43
1:A:40:LEU:HB2	1:A:41:PRO:HD3	2.02	0.42
4:H:73:THR:HG22	4:H:75:LYS:H	1.84	0.42
5:E:108:ALA:HB1	2:F:397:PHE:HA	2.02	0.42
1:A:129:ARG:HB3	1:A:132:HIS:HB2	2.02	0.41
5:E:566:TYR:O	5:E:623:ARG:NH2	2.53	0.41
5:E:225:ILE:HG22	5:E:257:THR:HG22	2.03	0.41
2:B:325:GLY:CA	2:B:347:GLN:O	2.69	0.41
1:A:601:TYR:O	1:A:659:ARG:NH2	2.54	0.41
2:F:264:LEU:HD12	2:F:264:LEU:N	2.34	0.41
1:A:107:LEU:N	1:A:108:PRO:HD2	2.36	0.41
5:E:339:LEU:C	5:E:339:LEU:HD13	2.46	0.41
1:A:176:LEU:HD11	1:A:295:LEU:CD1	2.51	0.41
1:A:456:GLN:HB3	6:I:93:LEU:HD11	2.03	0.41
2:B:301:TYR:CG	2:B:302:PRO:HA	2.56	0.41
5:E:272:LEU:HD22	6:I:140:LEU:HD22	2.03	0.41
2:F:285:ALA:CB	2:F:351:VAL:HG23	2.51	0.41
5:E:248:GLU:O	5:E:252:ARG:HG2	2.21	0.40
5:E:384:HIS:O	5:E:388:GLN:HG2	2.22	0.40
4:D:24:ASN:HB3	4:D:65:LEU:HD11	2.03	0.40
2:F:378:VAL:O	2:F:378:VAL:HG13	2.21	0.40

There are no symmetry-related clashes.

## 5.3 Torsion angles

### 5.3.1 Protein backbone

In the following table, the Percentiles column shows the percent Ramachandran outliers of the chain as a percentile score with respect to all PDB entries followed by that with respect to all EM entries.

The Analysed column shows the number of residues for which the backbone conformation was analysed, and the total number of residues.

Mol	Chain	Analysed	Favoured	Allowed	Outliers	Percentiles	
1	A	715/748 (96%)	704 (98%)	11 (2%)	0	100	100
2	B	376/448 (84%)	370 (98%)	6 (2%)	0	100	100
2	F	396/448 (88%)	384 (97%)	12 (3%)	0	100	100
3	C	272/362 (75%)	267 (98%)	5 (2%)	0	100	100
3	G	272/362 (75%)	269 (99%)	3 (1%)	0	100	100
4	D	97/119 (82%)	97 (100%)	0	0	100	100
4	H	97/119 (82%)	97 (100%)	0	0	100	100
5	E	663/677 (98%)	658 (99%)	5 (1%)	0	100	100
6	I	69/183 (38%)	69 (100%)	0	0	100	100
All	All	2957/3466 (85%)	2915 (99%)	42 (1%)	0	100	100

There are no Ramachandran outliers to report.

### 5.3.2 Protein sidechains

In the following table, the Percentiles column shows the percent sidechain outliers of the chain as a percentile score with respect to all PDB entries followed by that with respect to all EM entries.

The Analysed column shows the number of residues for which the sidechain conformation was analysed, and the total number of residues.

Mol	Chain	Analysed	Rotameric	Outliers	Percentiles	
1	A	591/611 (97%)	584 (99%)	7 (1%)	67	86
2	B	310/352 (88%)	310 (100%)	0	100	100
2	F	320/352 (91%)	319 (100%)	1 (0%)	91	97
3	C	232/297 (78%)	232 (100%)	0	100	100
3	G	232/297 (78%)	231 (100%)	1 (0%)	89	96

*Continued on next page...*



*Continued from previous page...*

Mol	Chain	Analysed	Rotameric	Outliers	Percentiles	
4	D	94/109 (86%)	93 (99%)	1 (1%)	70	87
4	H	94/109 (86%)	93 (99%)	1 (1%)	70	87
5	E	557/565 (99%)	552 (99%)	5 (1%)	75	90
6	I	64/162 (40%)	64 (100%)	0	100	100
All	All	2494/2854 (87%)	2478 (99%)	16 (1%)	82	94

All (16) residues with a non-rotameric sidechain are listed below:

Mol	Chain	Res	Type
1	A	126	ASP
1	A	129	ARG
1	A	130	LEU
1	A	131	LEU
1	A	136	HIS
1	A	340	LEU
1	A	434	VAL
4	D	70	PHE
5	E	259	LEU
5	E	295	LEU
5	E	607	LEU
5	E	615	LEU
5	E	637	LEU
2	F	308	VAL
3	G	74	ASP
4	H	70	PHE

Sometimes sidechains can be flipped to improve hydrogen bonding and reduce clashes. All (17) such sidechains are listed below:

Mol	Chain	Res	Type
1	A	217	GLN
1	A	355	GLN
1	A	561	GLN
1	A	574	HIS
1	A	708	GLN
2	B	242	GLN
2	B	321	GLN
2	B	365	HIS
4	D	17	ASN
5	E	269	ASN
5	E	299	HIS

*Continued on next page...*

*Continued from previous page...*

Mol	Chain	Res	Type
5	E	479	ASN
5	E	643	GLN
2	F	29	GLN
2	F	93	GLN
4	H	13	HIS
6	I	107	ASN

### 5.3.3 RNA ⓘ

There are no RNA molecules in this entry.

## 5.4 Non-standard residues in protein, DNA, RNA chains ⓘ

There are no non-standard protein/DNA/RNA residues in this entry.

## 5.5 Carbohydrates ⓘ

4 monosaccharides are modelled in this entry.

In the following table, the Counts columns list the number of bonds (or angles) for which Mogul statistics could be retrieved, the number of bonds (or angles) that are observed in the model and the number of bonds (or angles) that are defined in the Chemical Component Dictionary. The Link column lists molecule types, if any, to which the group is linked. The Z score for a bond length (or angle) is the number of standard deviations the observed value is removed from the expected value. A bond length (or angle) with  $|Z| > 2$  is considered an outlier worth inspection. RMSZ is the root-mean-square of all Z scores of the bond lengths (or angles).

Mol	Type	Chain	Res	Link	Bond lengths			Bond angles		
					Counts	RMSZ	$\# Z  > 2$	Counts	RMSZ	$\# Z  > 2$
7	NAG	J	1	2,7	14,14,15	0.47	0	17,19,21	0.73	0
7	NAG	J	2	7	14,14,15	0.76	0	17,19,21	0.79	0
7	NAG	K	1	2,7	14,14,15	0.43	0	17,19,21	0.75	0
7	NAG	K	2	7	14,14,15	0.78	0	17,19,21	0.75	0

In the following table, the Chirals column lists the number of chiral outliers, the number of chiral centers analysed, the number of these observed in the model and the number defined in the Chemical Component Dictionary. Similar counts are reported in the Torsion and Rings columns. '-' means no outliers of that kind were identified.

Mol	Type	Chain	Res	Link	Chirals	Torsions	Rings
7	NAG	J	1	2,7	-	0/6/23/26	0/1/1/1

*Continued on next page...*

*Continued from previous page...*

Mol	Type	Chain	Res	Link	Chirals	Torsions	Rings
7	NAG	J	2	7	-	0/6/23/26	0/1/1/1
7	NAG	K	1	2,7	-	0/6/23/26	0/1/1/1
7	NAG	K	2	7	-	0/6/23/26	0/1/1/1

There are no bond length outliers.

There are no bond angle outliers.

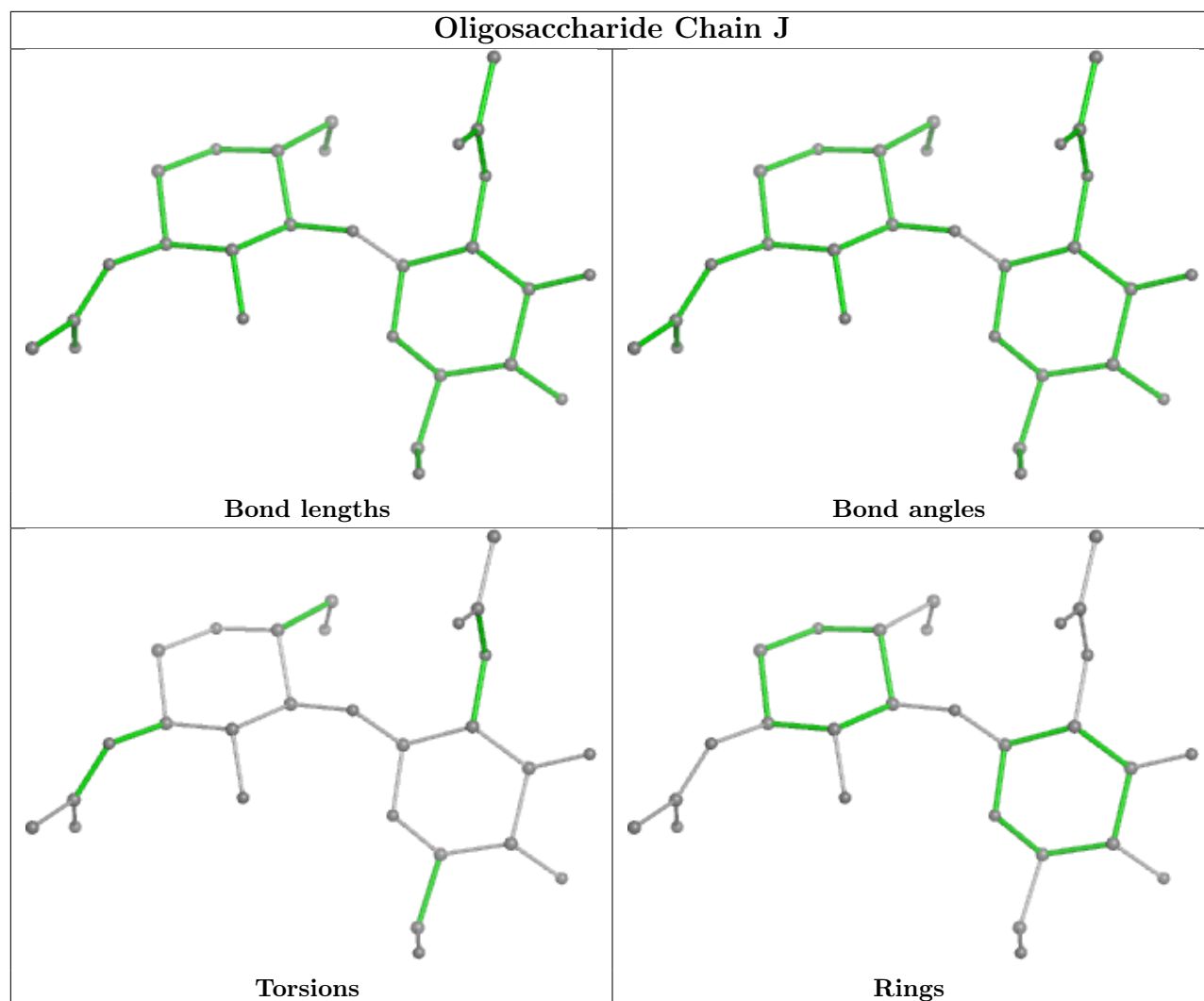
There are no chirality outliers.

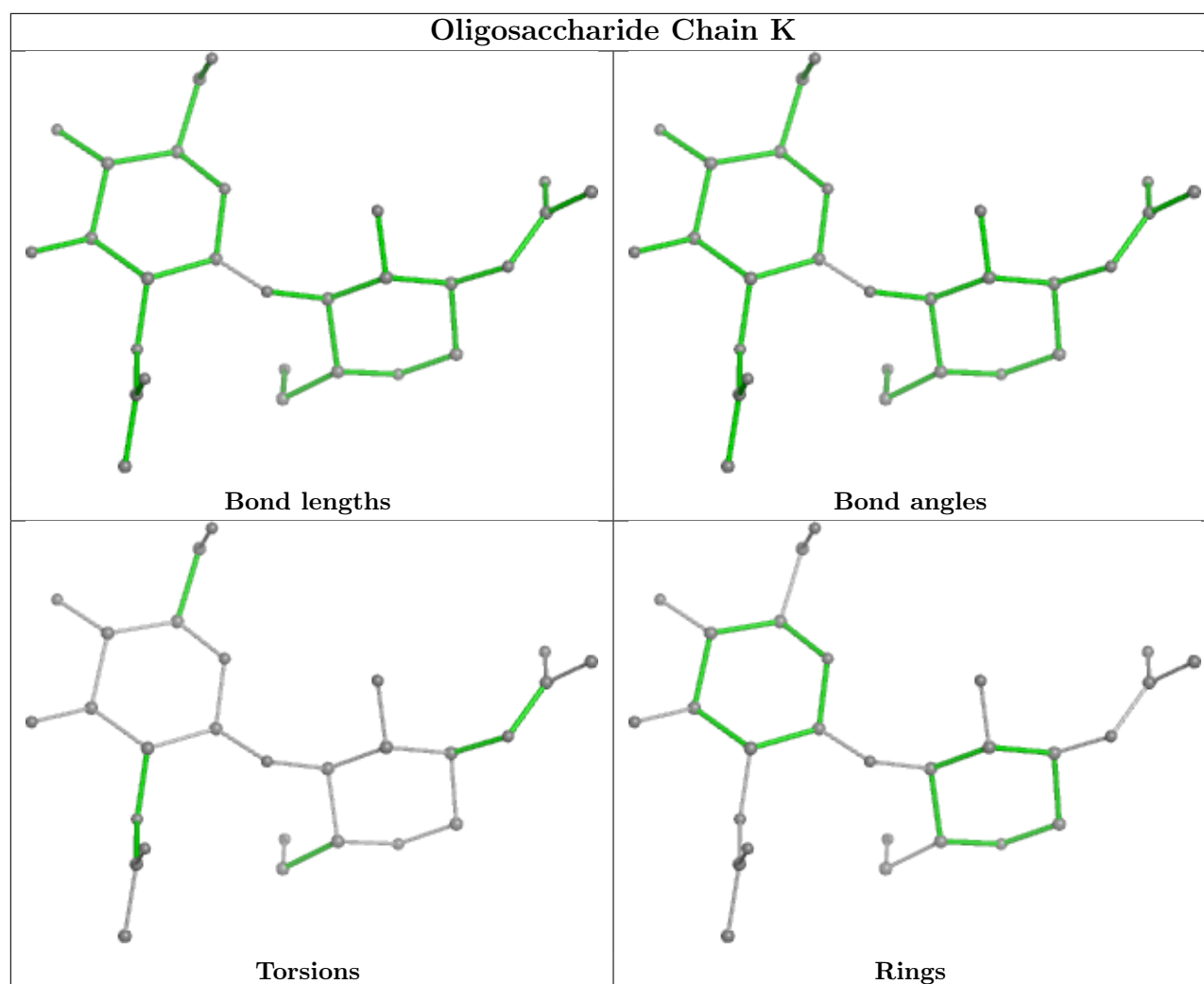
There are no torsion outliers.

There are no ring outliers.

No monomer is involved in short contacts.

The following is a two-dimensional graphical depiction of Mogul quality analysis of bond lengths, bond angles, torsion angles, and ring geometry for oligosaccharide.





## 5.6 Ligand geometry [i](#)

Of 6 ligands modelled in this entry, 2 are monoatomic - leaving 4 for Mogul analysis.

In the following table, the Counts columns list the number of bonds (or angles) for which Mogul statistics could be retrieved, the number of bonds (or angles) that are observed in the model and the number of bonds (or angles) that are defined in the Chemical Component Dictionary. The Link column lists molecule types, if any, to which the group is linked. The Z score for a bond length (or angle) is the number of standard deviations the observed value is removed from the expected value. A bond length (or angle) with  $|Z| > 2$  is considered an outlier worth inspection. RMSZ is the root-mean-square of all Z scores of the bond lengths (or angles).

Mol	Type	Chain	Res	Link	Bond lengths			Bond angles		
					Counts	RMSZ	$\# Z  > 2$	Counts	RMSZ	$\# Z  > 2$
10	NAG	G	401	3	14,14,15	0.76	0	17,19,21	0.80	0
8	ATP	A	801	9	26,33,33	0.70	0	31,52,52	0.65	0
11	ADP	E	701	9	24,29,29	0.66	0	29,45,45	0.67	0
10	NAG	C	401	3	14,14,15	0.73	0	17,19,21	0.84	0

In the following table, the Chirals column lists the number of chiral outliers, the number of chiral centers analysed, the number of these observed in the model and the number defined in the Chemical Component Dictionary. Similar counts are reported in the Torsion and Rings columns. '-' means no outliers of that kind were identified.

Mol	Type	Chain	Res	Link	Chirals	Torsions	Rings
10	NAG	G	401	3	-	0/6/23/26	0/1/1/1
8	ATP	A	801	9	-	0/18/38/38	0/3/3/3
11	ADP	E	701	9	-	2/12/32/32	0/3/3/3
10	NAG	C	401	3	-	0/6/23/26	0/1/1/1

There are no bond length outliers.

There are no bond angle outliers.

There are no chirality outliers.

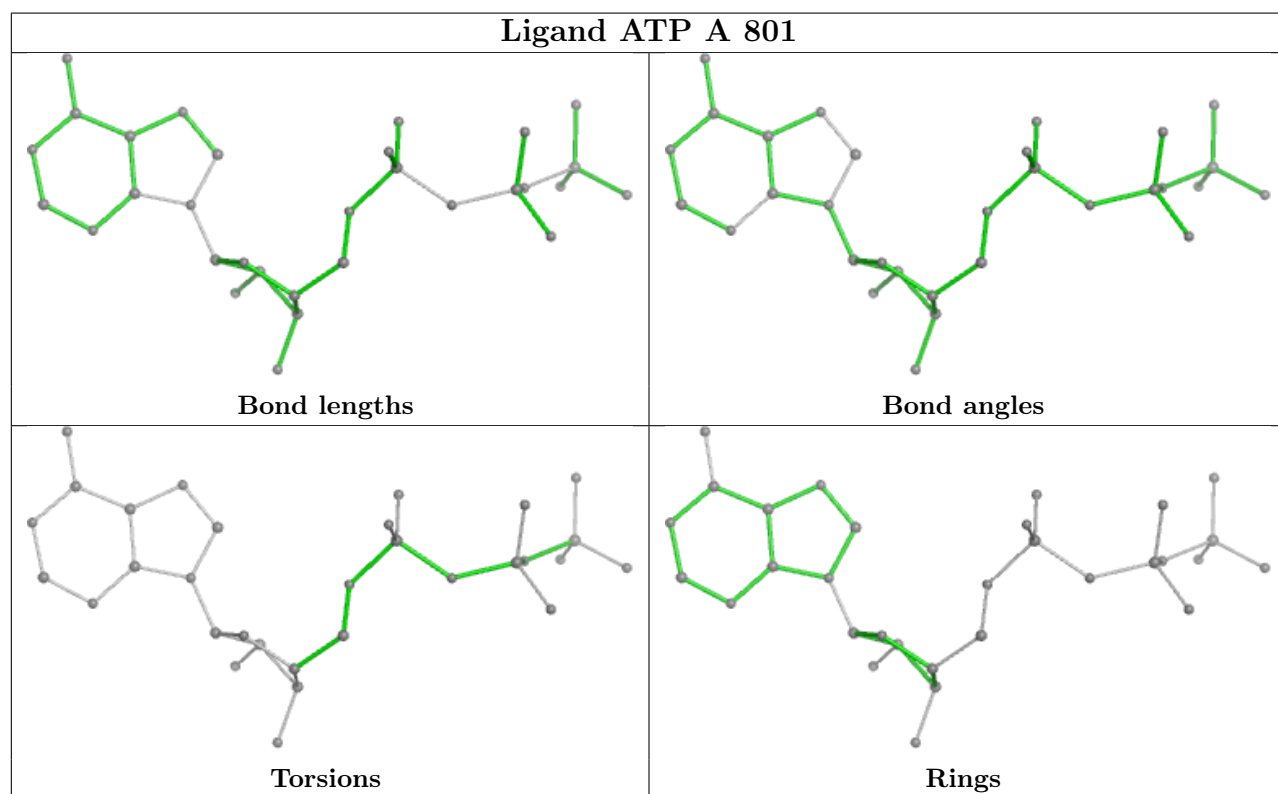
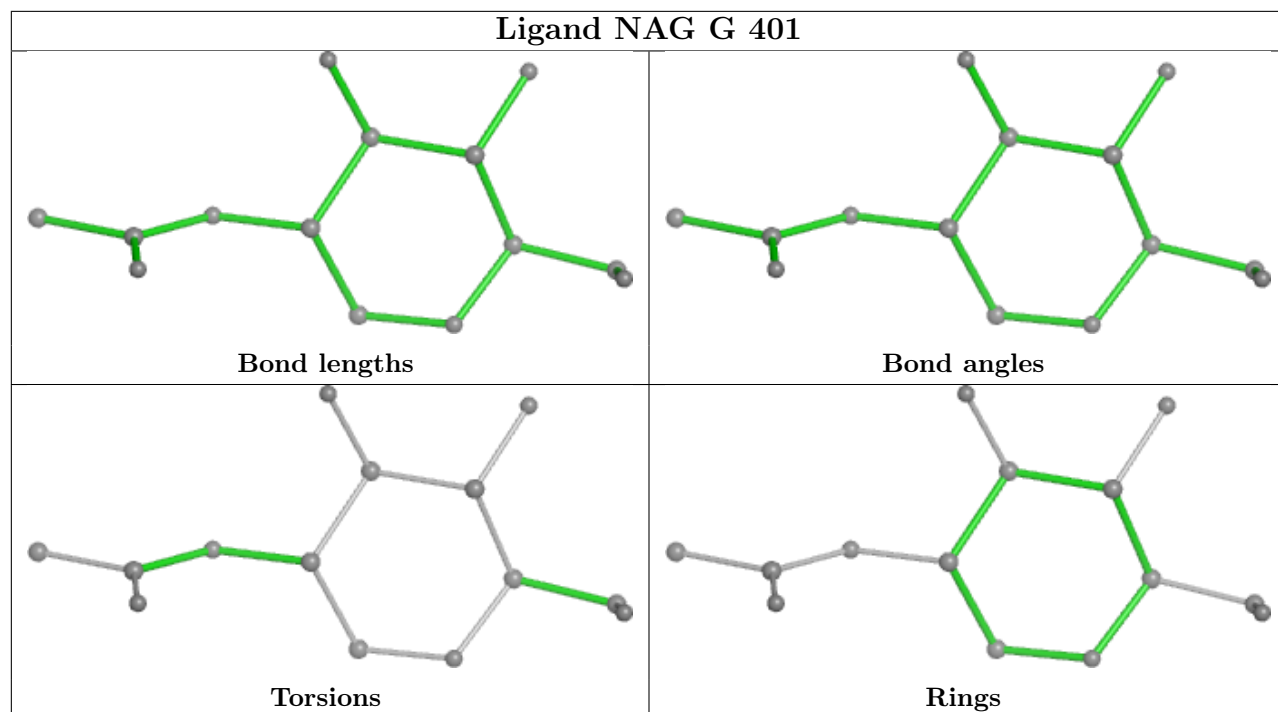
All (2) torsion outliers are listed below:

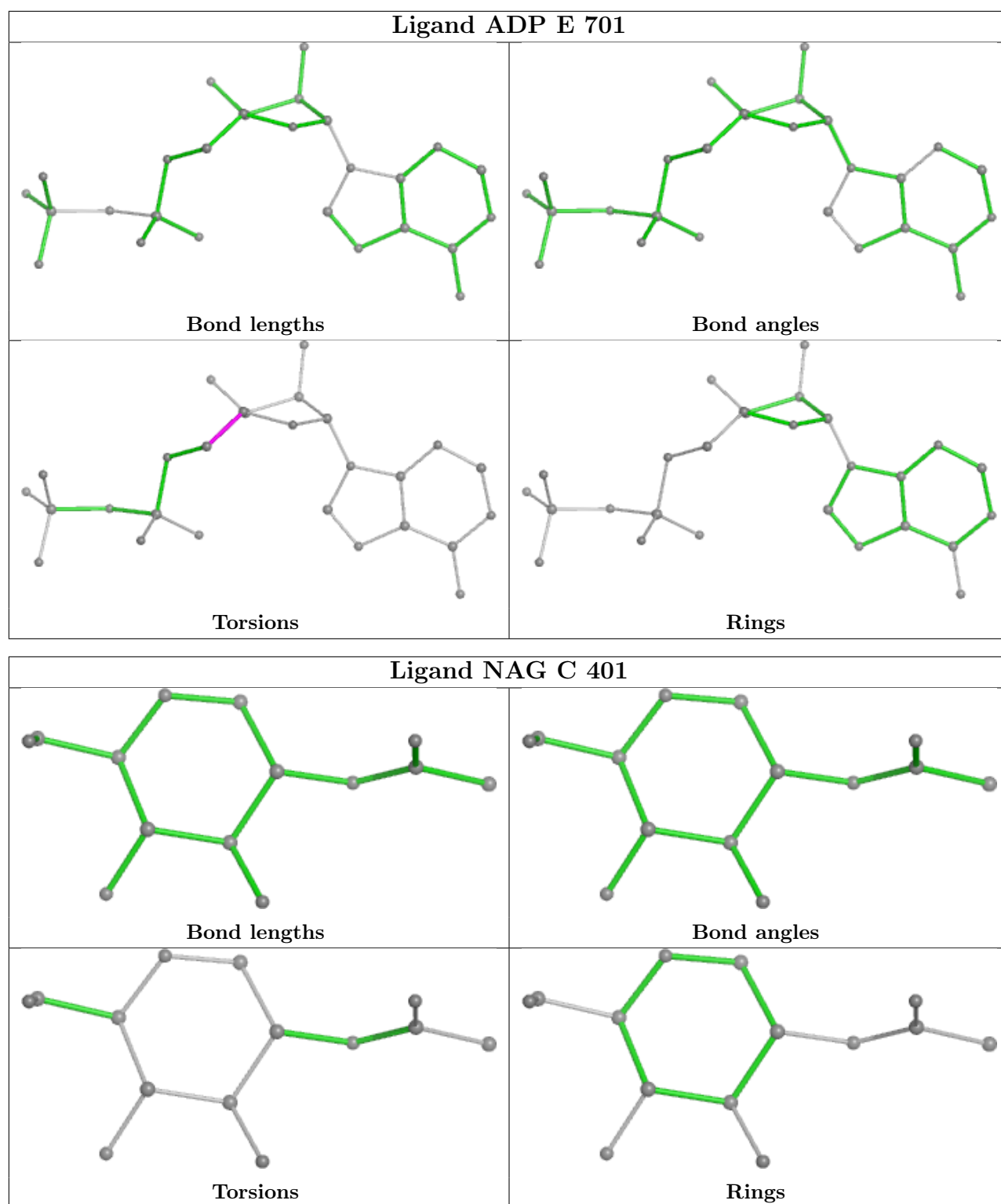
Mol	Chain	Res	Type	Atoms
11	E	701	ADP	O4'-C4'-C5'-O5'
11	E	701	ADP	C3'-C4'-C5'-O5'

There are no ring outliers.

No monomer is involved in short contacts.

The following is a two-dimensional graphical depiction of Mogul quality analysis of bond lengths, bond angles, torsion angles, and ring geometry for all instances of the Ligand of Interest. In addition, ligands with molecular weight > 250 and outliers as shown on the validation Tables will also be included. For torsion angles, if less than 5% of the Mogul distribution of torsion angles is within 10 degrees of the torsion angle in question, then that torsion angle is considered an outlier. Any bond that is central to one or more torsion angles identified as an outlier by Mogul will be highlighted in the graph. For rings, the root-mean-square deviation (RMSD) between the ring in question and similar rings identified by Mogul is calculated over all ring torsion angles. If the average RMSD is greater than 60 degrees and the minimal RMSD between the ring in question and any Mogul-identified rings is also greater than 60 degrees, then that ring is considered an outlier. The outliers are highlighted in purple. The color gray indicates Mogul did not find sufficient equivalents in the CSD to analyse the geometry.





## 5.7 Other polymers ⓘ

There are no such residues in this entry.

## 5.8 Polymer linkage issues ⓘ

There are no chain breaks in this entry.



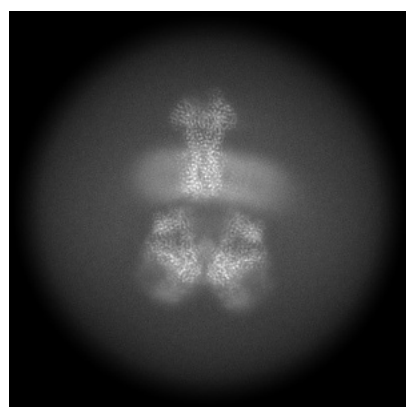
## 6 Map visualisation [i](#)

This section contains visualisations of the EMDB entry EMD-53923. These allow visual inspection of the internal detail of the map and identification of artifacts.

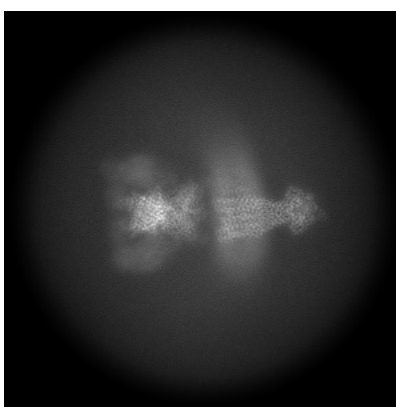
No raw map or half-maps were deposited for this entry and therefore no images, graphs, etc. pertaining to the raw map can be shown.

### 6.1 Orthogonal projections [i](#)

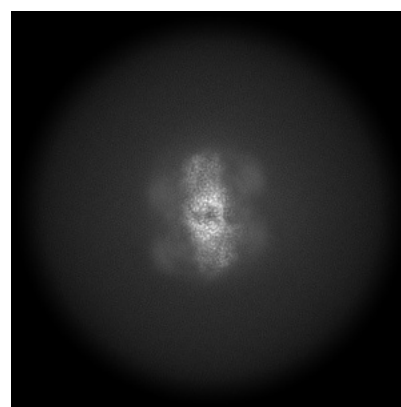
#### 6.1.1 Primary map



X



Y

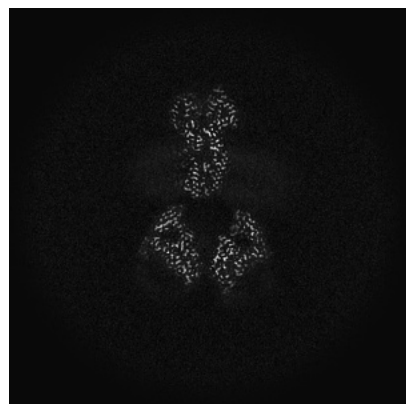


Z

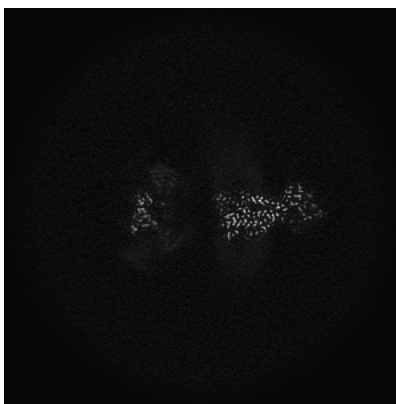
The images above show the map projected in three orthogonal directions.

### 6.2 Central slices [i](#)

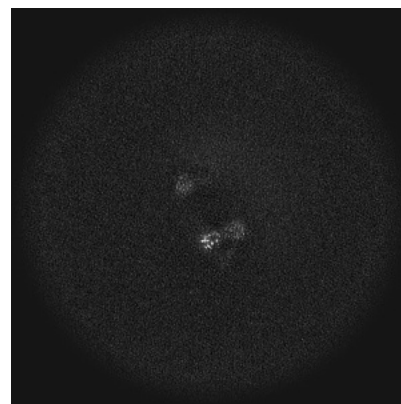
#### 6.2.1 Primary map



X Index: 256



Y Index: 256

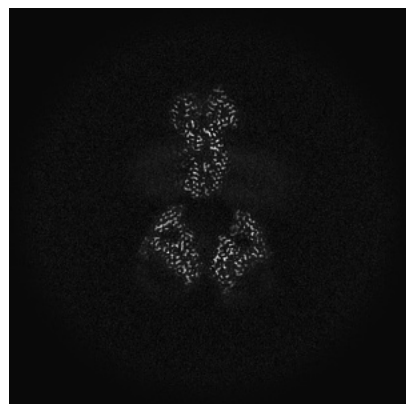


Z Index: 256

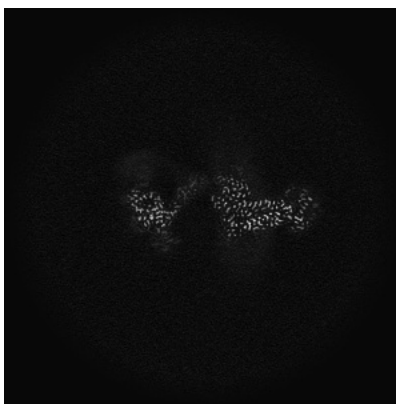
The images above show central slices of the map in three orthogonal directions.

## 6.3 Largest variance slices [i](#)

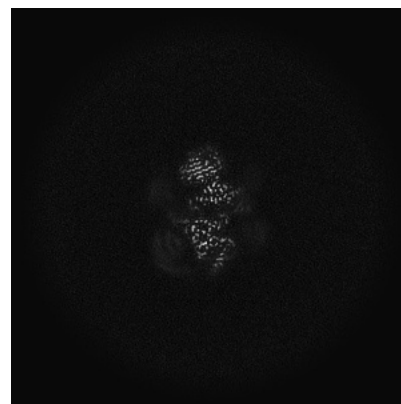
### 6.3.1 Primary map



X Index: 256



Y Index: 235



Z Index: 192

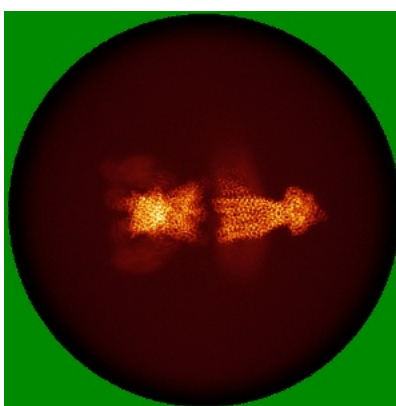
The images above show the largest variance slices of the map in three orthogonal directions.

## 6.4 Orthogonal standard-deviation projections (False-color) [i](#)

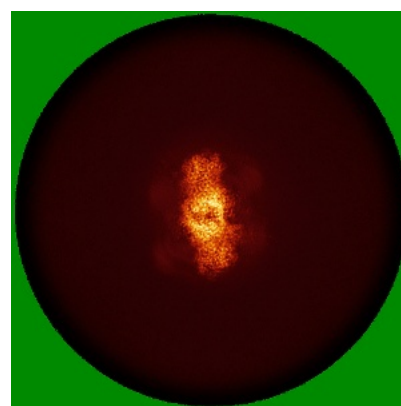
### 6.4.1 Primary map



X



Y



Z

The images above show the map standard deviation projections with false color in three orthogonal directions. Minimum values are shown in green, max in blue, and dark to light orange shades represent small to large values respectively.

## 6.5 Orthogonal surface views [i](#)

### 6.5.1 Primary map



X



Y



Z

The images above show the 3D surface view of the map at the recommended contour level 0.11. These images, in conjunction with the slice images, may facilitate assessment of whether an appropriate contour level has been provided.

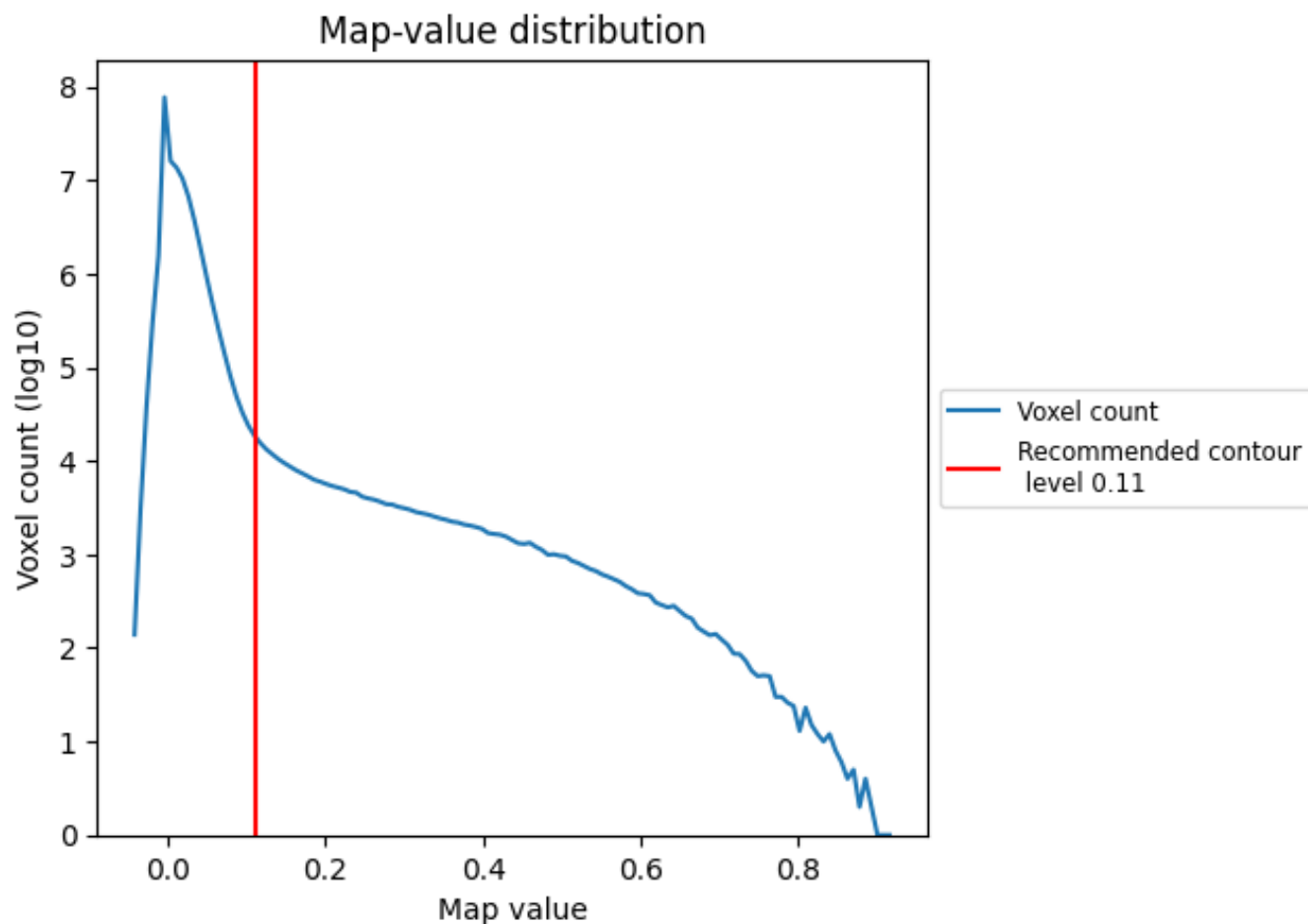
## 6.6 Mask visualisation [i](#)

This section was not generated. No masks/segmentation were deposited.

## 7 Map analysis [i](#)

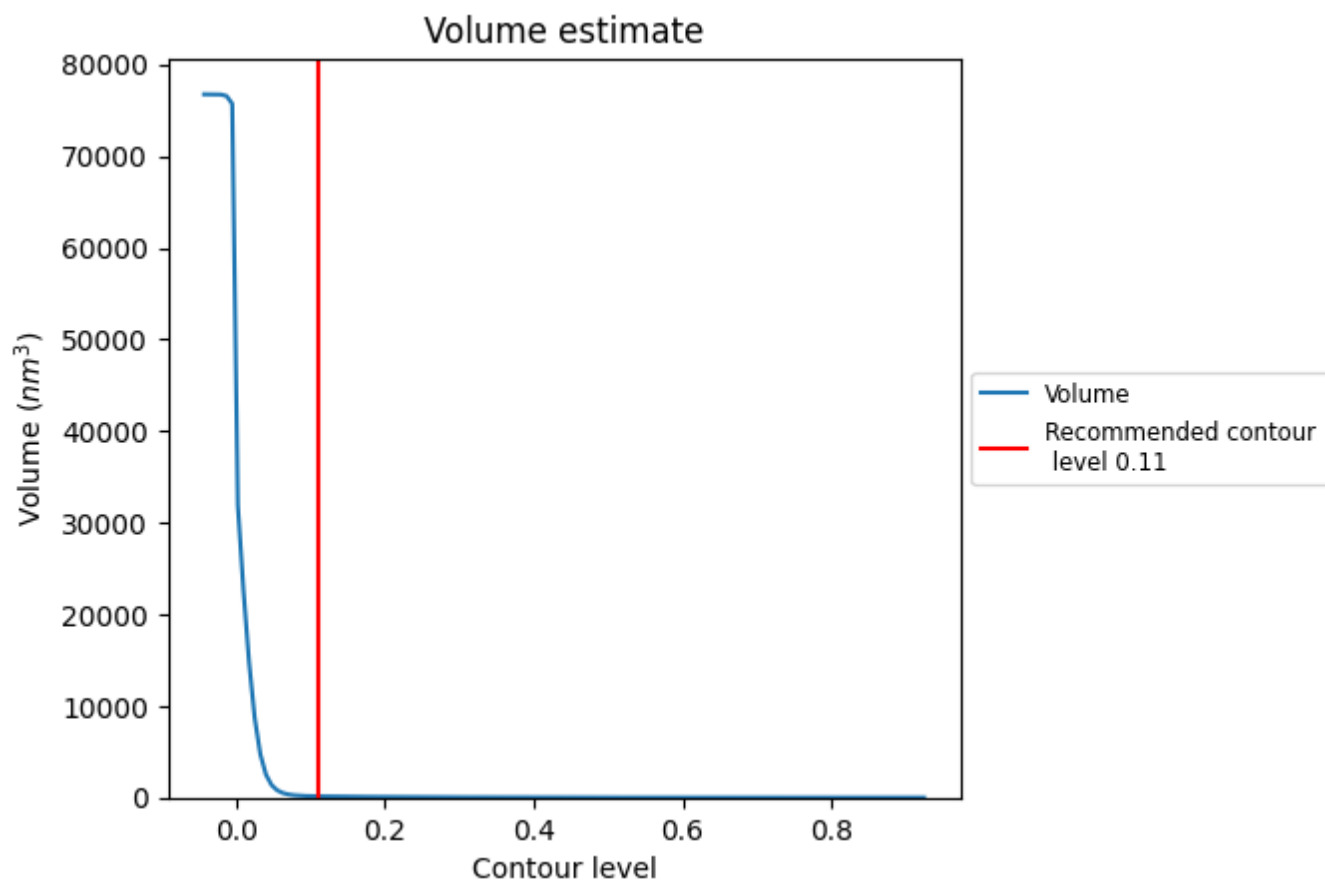
This section contains the results of statistical analysis of the map.

### 7.1 Map-value distribution [i](#)



The map-value distribution is plotted in 128 intervals along the x-axis. The y-axis is logarithmic. A spike in this graph at zero usually indicates that the volume has been masked.

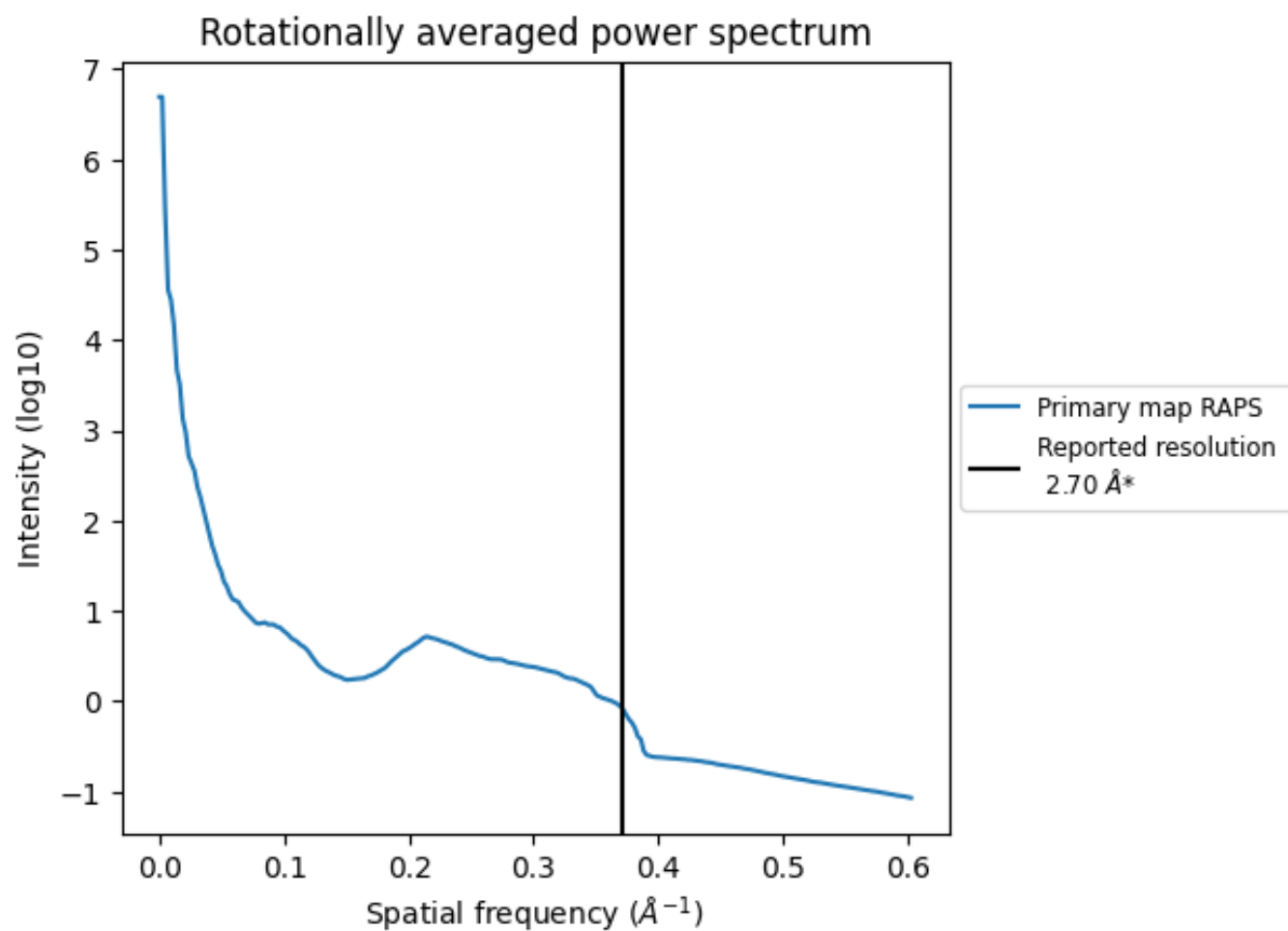
## 7.2 Volume estimate [i](#)



The volume at the recommended contour level is 138 nm<sup>3</sup>; this corresponds to an approximate mass of 125 kDa.

The volume estimate graph shows how the enclosed volume varies with the contour level. The recommended contour level is shown as a vertical line and the intersection between the line and the curve gives the volume of the enclosed surface at the given level.

### 7.3 Rotationally averaged power spectrum ⓘ



\*Reported resolution corresponds to spatial frequency of 0.370 Å<sup>-1</sup>

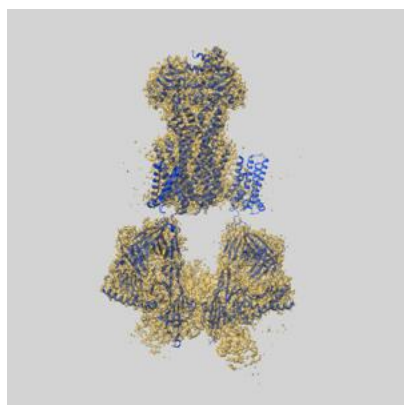
## 8 Fourier-Shell correlation ⓘ

This section was not generated. No FSC curve or half-maps provided.

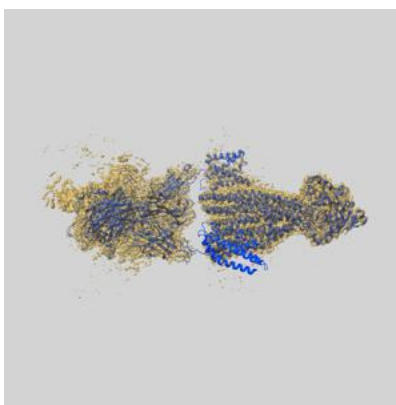
## 9 Map-model fit [i](#)

This section contains information regarding the fit between EMDB map EMD-53923 and PDB model 9RCV. Per-residue inclusion information can be found in section [3](#) on page [9](#).

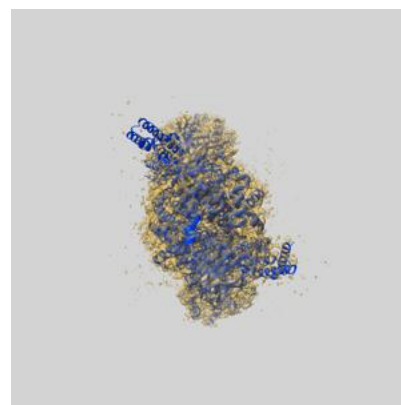
### 9.1 Map-model overlay [i](#)



X



Y

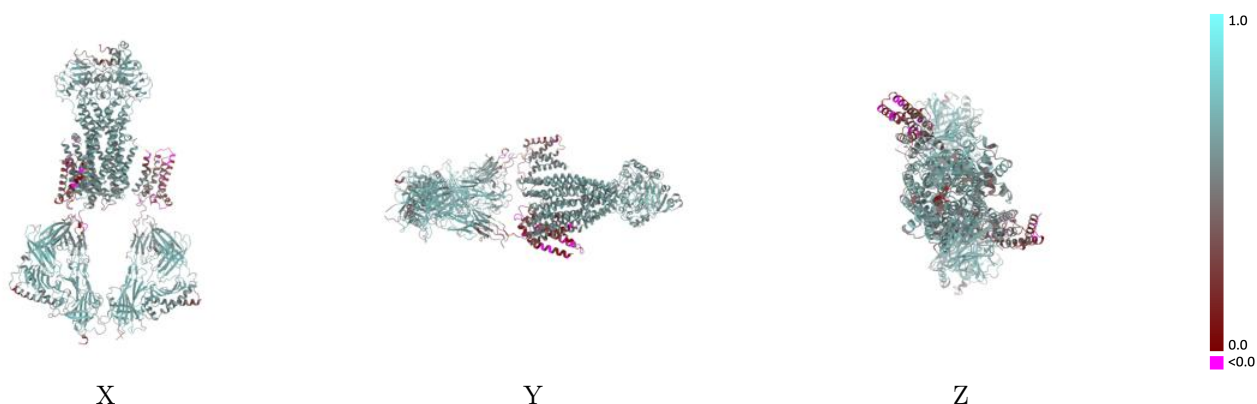


Z

The images above show the 3D surface view of the map at the recommended contour level 0.11 at 50% transparency in yellow overlaid with a ribbon representation of the model coloured in blue. These images allow for the visual assessment of the quality of fit between the atomic model and the map.

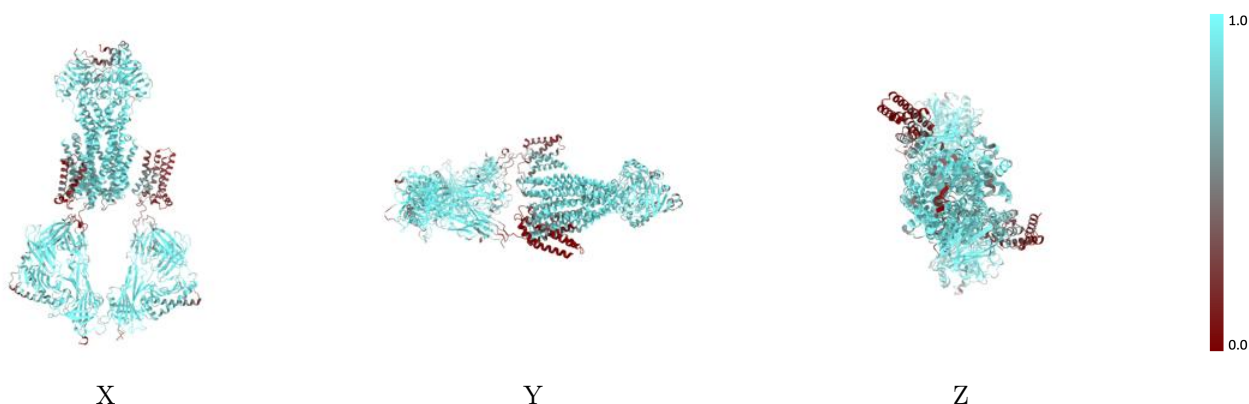


## 9.2 Q-score mapped to coordinate model [i](#)



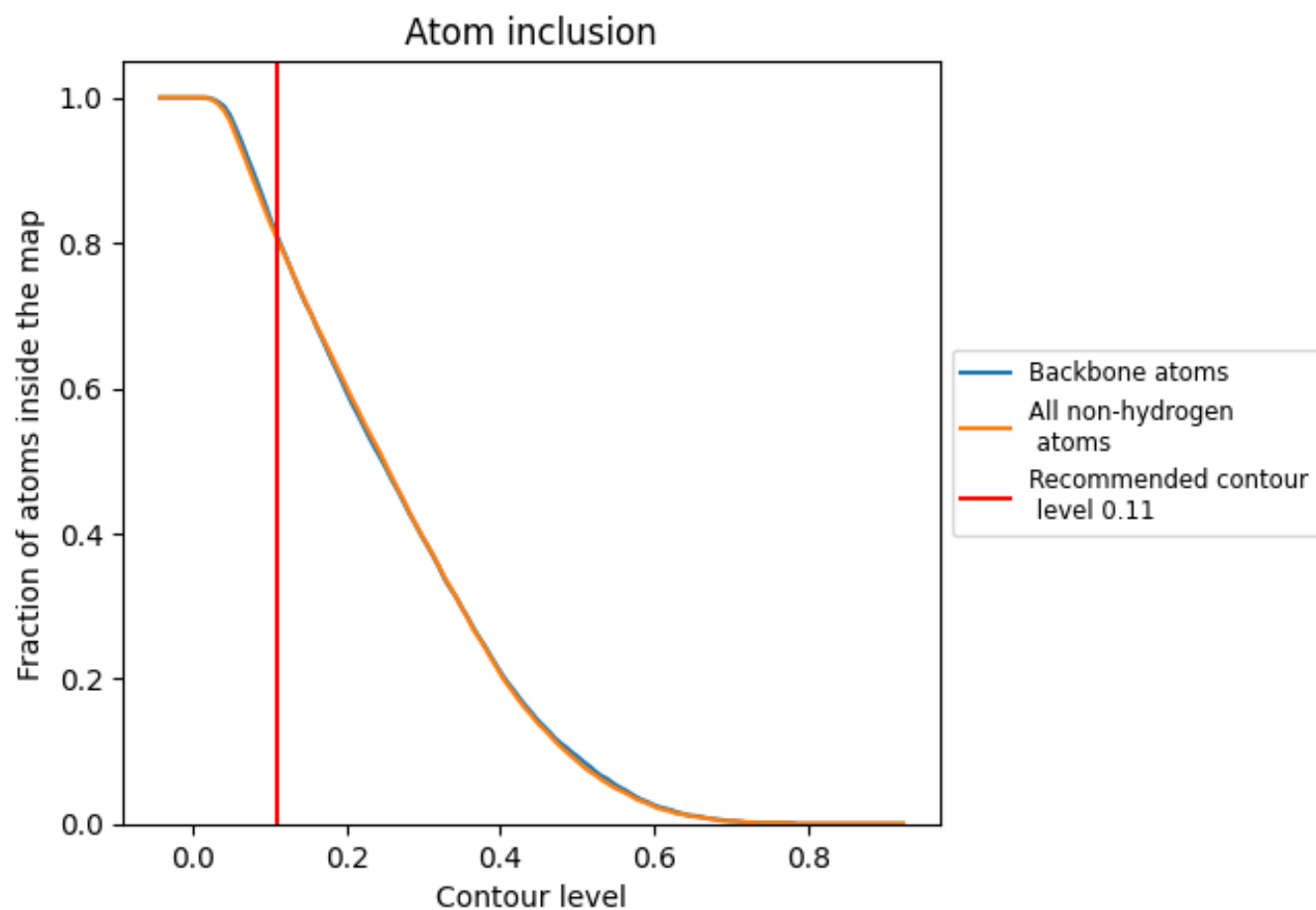
The images above show the model with each residue coloured according its Q-score. This shows their resolvability in the map with higher Q-score values reflecting better resolvability. Please note: Q-score is calculating the resolvability of atoms, and thus high values are only expected at resolutions at which atoms can be resolved. Low Q-score values may therefore be expected for many entries.

## 9.3 Atom inclusion mapped to coordinate model [i](#)



The images above show the model with each residue coloured according to its atom inclusion. This shows to what extent they are inside the map at the recommended contour level (0.11).

## 9.4 Atom inclusion [i](#)



At the recommended contour level, 81% of all backbone atoms, 80% of all non-hydrogen atoms, are inside the map.

9.5 Map-model fit summary ⓘ

The table lists the average atom inclusion at the recommended contour level (0.11) and Q-score for the entire model and for each chain.

Chain	Atom inclusion	Q-score
All	<div></div> 0.8050	<div></div> 0.5670
A	<div></div> 0.7360	<div></div> 0.5190
B	<div></div> 0.8540	<div></div> 0.5910
C	<div></div> 0.8400	<div></div> 0.5960
D	<div></div> 0.9240	<div></div> 0.6520
E	<div></div> 0.7770	<div></div> 0.5430
F	<div></div> 0.8440	<div></div> 0.5750
G	<div></div> 0.8380	<div></div> 0.5980
H	<div></div> 0.9250	<div></div> 0.6520
I	<div></div> 0.8880	<div></div> 0.5970
J	<div></div> 0.8930	<div></div> 0.5990
K	<div></div> 0.8570	<div></div> 0.6270

1.0

0.0

<0.0