



Full wwPDB X-ray Structure Validation Report ⓘ

Oct 30, 2025 – 06:29 pm GMT

PDB ID : 9R7A / pdb_00009r7a
Title : Imine Reductase IR91 from Kribbella flavida with NADP⁺ and 5-methoxy-(S)-2-(N-methylamino)tetralin
Authors : Srinivas, K.; Gilio, A.K.; Grogan, G.
Deposited on : 2025-05-14
Resolution : 1.91 Å(reported)

This is a Full wwPDB X-ray Structure Validation Report for a publicly released PDB entry.

We welcome your comments at validation@mail.wwpdb.org

A user guide is available at

<https://www.wwpdb.org/validation/2017/XrayValidationReportHelp>

with specific help available everywhere you see the ⓘ symbol.

The types of validation reports are described at

<http://www.wwpdb.org/validation/2017/FAQs#types>.

The following versions of software and data (see [references ⓘ](#)) were used in the production of this report:

MolProbity	:	4-5-2 with Phenix2.0
Mogul	:	1.8.4, CSD as541be (2020)
Xtriage (Phenix)	:	2.0
EDS	:	3.0
buster-report	:	1.1.7 (2018)
Percentile statistics	:	20231227.v01 (using entries in the PDB archive December 27th 2023)
CCP4	:	9.0.010 (Gargrove)
Density-Fitness	:	1.0.12
Ideal geometry (proteins)	:	Engh & Huber (2001)
Ideal geometry (DNA, RNA)	:	Parkinson et al. (1996)
Validation Pipeline (wwPDB-VP)	:	2.46

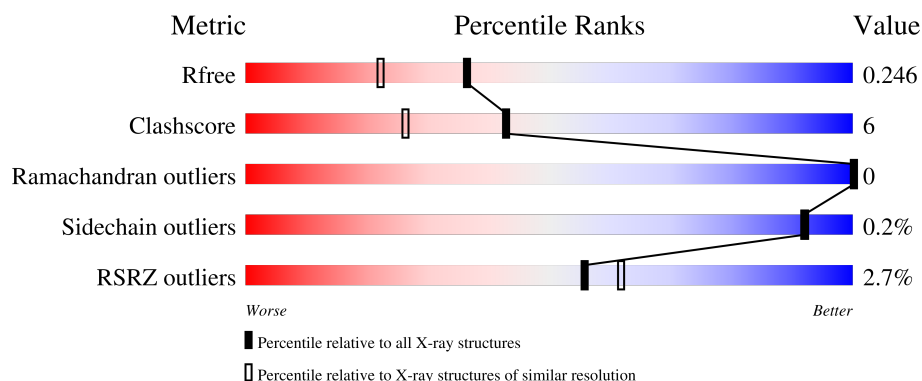
1 Overall quality at a glance

The following experimental techniques were used to determine the structure:

X-RAY DIFFRACTION

The reported resolution of this entry is 1.91 Å.

Percentile scores (ranging between 0-100) for global validation metrics of the entry are shown in the following graphic. The table shows the number of entries on which the scores are based.



Metric	Whole archive (#Entries)	Similar resolution (#Entries, resolution range(Å))
R_{free}	164625	1028 (1.92-1.92)
Clashscore	180529	1100 (1.92-1.92)
Ramachandran outliers	177936	1087 (1.92-1.92)
Sidechain outliers	177891	1087 (1.92-1.92)
RSRZ outliers	164620	1028 (1.92-1.92)

The table below summarises the geometric issues observed across the polymeric chains and their fit to the electron density. The red, orange, yellow and green segments of the lower bar indicate the fraction of residues that contain outliers for ≥ 3 , 2, 1 and 0 types of geometric quality criteria respectively. A grey segment represents the fraction of residues that are not modelled. The numeric value for each fraction is indicated below the corresponding segment, with a dot representing fractions $\leq 5\%$. The upper red bar (where present) indicates the fraction of residues that have poor fit to the electron density. The numeric value is given above the bar.

Mol	Chain	Length	Quality of chain
1	A	296	<div> <div>3%</div> <div>89%</div> <div>8%</div> <div>..</div> </div>
1	B	296	<div> <div>3%</div> <div>86%</div> <div>11%</div> <div>..</div> </div>

2 Entry composition [i](#)

There are 5 unique types of molecules in this entry. The entry contains 4669 atoms, of which 0 are hydrogens and 0 are deuteriums.

In the tables below, the ZeroOcc column contains the number of atoms modelled with zero occupancy, the AltConf column contains the number of residues with at least one atom in alternate conformation and the Trace column contains the number of residues modelled with at most 2 atoms.

- Molecule 1 is a protein called 6-phosphogluconate dehydrogenase NAD-binding protein.

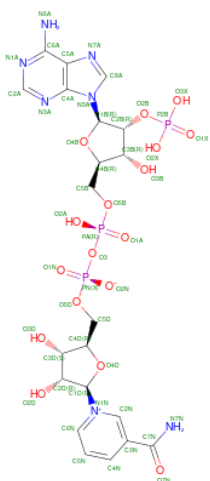
Mol	Chain	Residues	Atoms					ZeroOcc	AltConf	Trace
1	A	291	Total	C	N	O	S	0	0	0
			2091	1309	362	408	12			
1	B	291	Total	C	N	O	S	0	0	0
			2092	1311	363	406	12			

- Molecule 2 is SULFATE ION (CCD ID: SO4) (formula: O₄S).



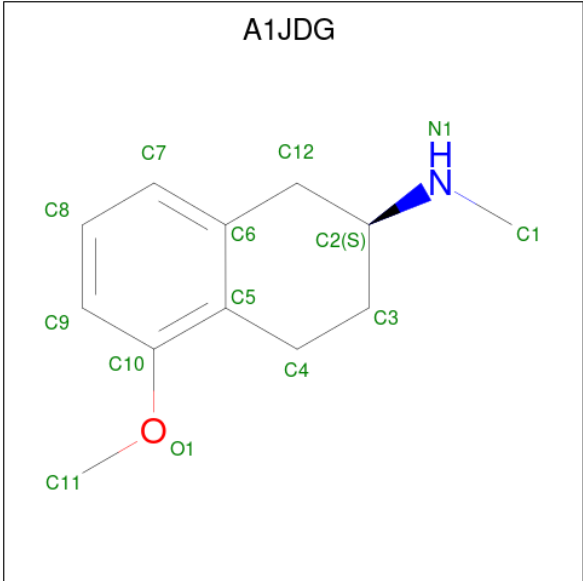
Mol	Chain	Residues	Atoms			ZeroOcc	AltConf
2	A	1	Total	O	S	0	0
			5	4	1		
2	B	1	Total	O	S	0	0
			5	4	1		

- Molecule 3 is NADP NICOTINAMIDE-ADENINE-DINUCLEOTIDE PHOSPHATE (CCD ID: NAP) (formula: C₂₁H₂₈N₇O₁₇P₃) (labeled as "Ligand of Interest" by depositor).



Mol	Chain	Residues	Atoms					ZeroOcc	AltConf
3	A	1	Total 48	C 21	N 7	O 17	P 3	0	0
3	B	1	Total 48	C 21	N 7	O 17	P 3	0	0

- Molecule 4 is (2 {S})-5-methoxy- {N}-methyl-1,2,3,4-tetrahydronaphthalen-2-amine (CCD ID: A1JDG) (formula: C₁₂H₁₇NO) (labeled as "Ligand of Interest" by depositor).



Mol	Chain	Residues	Atoms				ZeroOcc	AltConf
4	A	1	Total 14	C 12	N 1	O 1	0	0

Continued on next page...

Continued from previous page...

Mol	Chain	Residues	Atoms				ZeroOcc	AltConf
4	B	1	Total	C	N	O	0	0
			14	12	1	1		

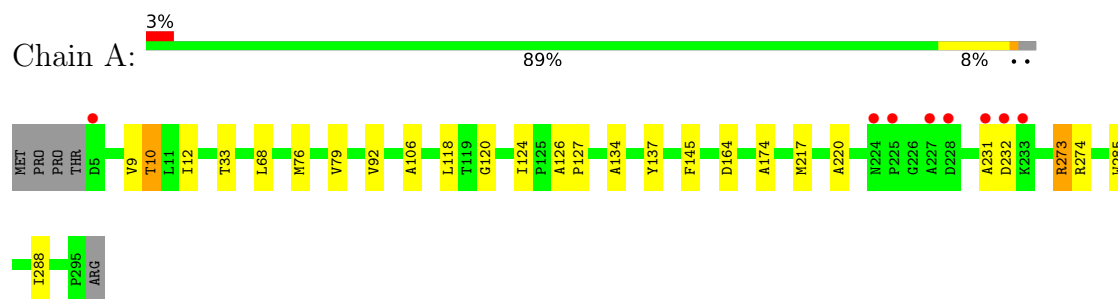
- Molecule 5 is water.

Mol	Chain	Residues	Atoms		ZeroOcc	AltConf
5	A	176	Total	O	0	0
			176	176		
5	B	176	Total	O	0	0
			176	176		

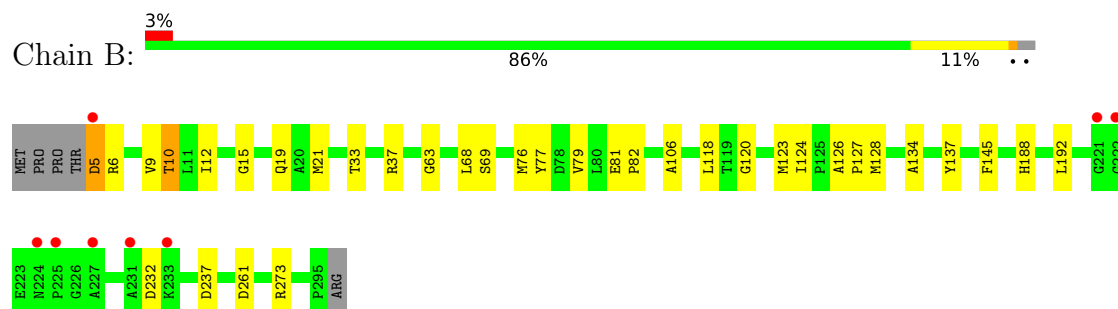
3 Residue-property plots

These plots are drawn for all protein, RNA, DNA and oligosaccharide chains in the entry. The first graphic for a chain summarises the proportions of the various outlier classes displayed in the second graphic. The second graphic shows the sequence view annotated by issues in geometry and electron density. Residues are color-coded according to the number of geometric quality criteria for which they contain at least one outlier: green = 0, yellow = 1, orange = 2 and red = 3 or more. A red dot above a residue indicates a poor fit to the electron density ($RSRZ > 2$). Stretches of 2 or more consecutive residues without any outlier are shown as a green connector. Residues present in the sample, but not in the model, are shown in grey.

- Molecule 1: 6-phosphogluconate dehydrogenase NAD-binding protein



- Molecule 1: 6-phosphogluconate dehydrogenase NAD-binding protein



4 Data and refinement statistics

Property	Value	Source
Space group	P 1 21 1	Depositor
Cell constants a, b, c, α , β , γ	51.80Å 109.51Å 53.75Å 90.00° 93.93° 90.00°	Depositor
Resolution (Å)	54.76 – 1.91 54.76 – 1.91	Depositor EDS
% Data completeness (in resolution range)	100.0 (54.76-1.91) 100.0 (54.76-1.91)	Depositor EDS
R_{merge}	0.16	Depositor
R_{sym}	(Not available)	Depositor
$\langle I/\sigma(I) \rangle$ ¹	1.51 (at 1.91Å)	Xtriage
Refinement program	REFMAC 5.8.0419	Depositor
R, R_{free}	0.188 , 0.235 0.199 , 0.246	Depositor DCC
R_{free} test set	2255 reflections (4.87%)	wwPDB-VP
Wilson B-factor (Å ²)	22.2	Xtriage
Anisotropy	0.902	Xtriage
Bulk solvent k_{sol} (e/Å ³), B_{sol} (Å ²)	0.37 , 40.1	EDS
L-test for twinning ²	$\langle L \rangle = 0.49$, $\langle L^2 \rangle = 0.33$	Xtriage
Estimated twinning fraction	0.016 for l,-k,h	Xtriage
F_o, F_c correlation	0.96	EDS
Total number of atoms	4669	wwPDB-VP
Average B, all atoms (Å ²)	29.0	wwPDB-VP

Xtriage's analysis on translational NCS is as follows: *The largest off-origin peak in the Patterson function is 6.42% of the height of the origin peak. No significant pseudotranslation is detected.*

¹Intensities estimated from amplitudes.

²Theoretical values of $\langle |L| \rangle$, $\langle L^2 \rangle$ for acentric reflections are 0.5, 0.333 respectively for untwinned datasets, and 0.375, 0.2 for perfectly twinned datasets.

5 Model quality

5.1 Standard geometry

Bond lengths and bond angles in the following residue types are not validated in this section: NAP, A1JDG, SO4

The Z score for a bond length (or angle) is the number of standard deviations the observed value is removed from the expected value. A bond length (or angle) with $|Z| > 5$ is considered an outlier worth inspection. RMSZ is the root-mean-square of all Z scores of the bond lengths (or angles).

Mol	Chain	Bond lengths		Bond angles	
		RMSZ	$\# Z > 5$	RMSZ	$\# Z > 5$
1	A	0.72	1/2132 (0.0%)	1.05	4/2920 (0.1%)
1	B	0.72	1/2133 (0.0%)	1.09	5/2920 (0.2%)
All	All	0.72	2/4265 (0.0%)	1.07	9/5840 (0.2%)

Chiral center outliers are detected by calculating the chiral volume of a chiral center and verifying if the center is modelled as a planar moiety or with the opposite hand. A planarity outlier is detected by checking planarity of atoms in a peptide group, atoms in a mainchain group or atoms of a sidechain that are expected to be planar.

Mol	Chain	#Chirality outliers	#Planarity outliers
1	A	0	2
1	B	0	1
All	All	0	3

All (2) bond length outliers are listed below:

Mol	Chain	Res	Type	Atoms	Z	Observed(Å)	Ideal(Å)
1	B	9	VAL	C-N	-7.11	1.24	1.33
1	A	10	THR	C-N	-5.62	1.25	1.33

All (9) bond angle outliers are listed below:

Mol	Chain	Res	Type	Atoms	Z	Observed(°)	Ideal(°)
1	B	9	VAL	CA-C-N	11.16	138.41	123.00
1	B	9	VAL	C-N-CA	11.16	138.41	123.00
1	A	9	VAL	CA-C-N	10.17	136.76	122.72
1	A	9	VAL	C-N-CA	10.17	136.76	122.72
1	B	10	THR	O-C-N	9.17	134.12	123.29
1	A	9	VAL	O-C-N	-7.34	115.26	123.18
1	B	9	VAL	O-C-N	-7.33	115.33	123.03

Continued on next page...

Continued from previous page...

Mol	Chain	Res	Type	Atoms	Z	Observed(°)	Ideal(°)
1	B	6	ARG	N-CA-C	-6.17	103.22	112.54
1	A	164	ASP	CA-CB-CG	5.02	117.62	112.60

There are no chirality outliers.

All (3) planarity outliers are listed below:

Mol	Chain	Res	Type	Group
1	A	273	ARG	Sidechain
1	A	274	ARG	Sidechain
1	B	273	ARG	Sidechain

5.2 Too-close contacts [i](#)

In the following table, the Non-H and H(model) columns list the number of non-hydrogen atoms and hydrogen atoms in the chain respectively. The H(added) column lists the number of hydrogen atoms added and optimized by MolProbity. The Clashes column lists the number of clashes within the asymmetric unit, whereas Symm-Clashes lists symmetry-related clashes.

Mol	Chain	Non-H	H(model)	H(added)	Clashes	Symm-Clashes
1	A	2091	0	2046	26	0
1	B	2092	0	2055	29	0
2	A	5	0	0	0	0
2	B	5	0	0	0	0
3	A	48	0	25	0	0
3	B	48	0	25	1	0
4	A	14	0	0	1	0
4	B	14	0	0	0	0
5	A	176	0	0	9	0
5	B	176	0	0	9	0
All	All	4669	0	4151	52	0

The all-atom clashscore is defined as the number of clashes found per 1000 atoms (including hydrogen atoms). The all-atom clashscore for this structure is 6.

All (52) close contacts within the same asymmetric unit are listed below, sorted by their clash magnitude.

Atom-1	Atom-2	Interatomic distance (Å)	Clash overlap (Å)
5:A:519:HOH:O	1:B:192:LEU:HD23	1.41	1.19
1:A:231:ALA:HB2	5:A:489:HOH:O	1.46	1.16

Continued on next page...

Continued from previous page...

Atom-1	Atom-2	Interatomic distance (Å)	Clash overlap (Å)
1:A:217:MET:SD	5:A:532:HOH:O	2.05	1.12
1:B:237:ASP:CB	5:B:508:HOH:O	2.09	1.01
1:A:174:ALA:HB2	5:A:519:HOH:O	1.74	0.85
1:A:285:TRP:HE1	4:A:303:A1JDG:C1	1.99	0.75
1:A:217:MET:HE2	1:B:124:ILE:HG22	1.67	0.74
1:A:12:ILE:HG21	1:A:79:VAL:HG11	1.72	0.71
1:A:174:ALA:CB	5:A:519:HOH:O	2.35	0.70
1:A:231:ALA:CB	5:A:489:HOH:O	2.15	0.69
1:B:12:ILE:HG21	1:B:79:VAL:HG11	1.82	0.60
1:A:217:MET:HE1	5:B:419:HOH:O	2.01	0.59
1:A:217:MET:HE1	1:B:123:MET:O	2.02	0.59
1:A:174:ALA:CA	5:A:519:HOH:O	2.51	0.58
1:B:37:ARG:NH2	3:B:302:NAP:O1X	2.36	0.55
1:A:174:ALA:HA	5:A:519:HOH:O	2.07	0.54
1:B:192:LEU:HD22	5:B:401:HOH:O	2.07	0.54
1:B:68:LEU:CD1	1:B:76:MET:HG3	2.38	0.54
1:B:68:LEU:HD13	1:B:76:MET:HG3	1.90	0.54
1:B:76:MET:HE1	1:B:106:ALA:HB1	1.91	0.53
1:A:76:MET:HE1	1:A:106:ALA:HB1	1.91	0.53
1:A:68:LEU:CD2	1:A:92:VAL:HG13	2.40	0.52
1:A:10:THR:HA	1:A:33:THR:O	2.10	0.51
1:B:10:THR:HA	1:B:33:THR:O	2.11	0.51
1:B:192:LEU:HD13	5:B:401:HOH:O	2.11	0.50
1:A:273:ARG:HD3	5:A:528:HOH:O	2.13	0.49
1:B:118:LEU:HD11	1:B:145:PHE:HA	1.96	0.48
1:A:126:ALA:N	1:A:127:PRO:CD	2.77	0.47
1:B:126:ALA:N	1:B:127:PRO:CD	2.78	0.47
1:B:15:GLY:O	1:B:19:GLN:HG3	2.15	0.46
1:B:120:GLY:HA2	1:B:137:TYR:O	2.16	0.45
1:A:120:GLY:HA2	1:A:137:TYR:O	2.17	0.45
1:B:81:GLU:N	1:B:82:PRO:HD2	2.32	0.45
1:B:5:ASP:N	1:B:5:ASP:OD1	2.50	0.45
1:B:192:LEU:CD2	5:B:401:HOH:O	2.63	0.45
1:A:118:LEU:HD11	1:A:145:PHE:HA	1.99	0.44
1:B:188:HIS:NE2	1:B:261:ASP:O	2.50	0.44
1:B:63:GLY:HA3	5:B:405:HOH:O	2.18	0.43
1:A:232:ASP:O	1:A:232:ASP:OD1	2.36	0.43
1:B:124:ILE:HD12	1:B:124:ILE:C	2.43	0.43
1:B:192:LEU:CD1	5:B:401:HOH:O	2.67	0.43
1:B:77:TYR:O	1:B:81:GLU:HG2	2.19	0.42
1:A:68:LEU:HD21	1:A:92:VAL:HG13	2.01	0.42

Continued on next page...

Continued from previous page...

Atom-1	Atom-2	Interatomic distance (Å)	Clash overlap (Å)
1:A:220:ALA:HB2	1:B:128:MET:HE3	2.02	0.42
1:A:285:TRP:O	1:A:288:ILE:HG12	2.20	0.42
1:A:124:ILE:C	1:A:124:ILE:HD12	2.44	0.42
1:B:21:MET:HE1	1:B:69:SER:HB2	2.01	0.42
1:B:232:ASP:O	1:B:232:ASP:OD1	2.37	0.41
1:A:217:MET:CE	5:B:419:HOH:O	2.66	0.41
1:A:124:ILE:HG12	1:A:134:ALA:HA	2.03	0.41
1:B:63:GLY:CA	5:B:405:HOH:O	2.67	0.41
1:B:124:ILE:HG12	1:B:134:ALA:HA	2.03	0.40

There are no symmetry-related clashes.

5.3 Torsion angles [i](#)

5.3.1 Protein backbone [i](#)

In the following table, the Percentiles column shows the percent Ramachandran outliers of the chain as a percentile score with respect to all X-ray entries followed by that with respect to entries of similar resolution.

The Analysed column shows the number of residues for which the backbone conformation was analysed, and the total number of residues.

Mol	Chain	Analysed	Favoured	Allowed	Outliers	Percentiles	
1	A	289/296 (98%)	283 (98%)	6 (2%)	0	100	100
1	B	289/296 (98%)	282 (98%)	7 (2%)	0	100	100
All	All	578/592 (98%)	565 (98%)	13 (2%)	0	100	100

There are no Ramachandran outliers to report.

5.3.2 Protein sidechains [i](#)

In the following table, the Percentiles column shows the percent sidechain outliers of the chain as a percentile score with respect to all X-ray entries followed by that with respect to entries of similar resolution.

The Analysed column shows the number of residues for which the sidechain conformation was analysed, and the total number of residues.

Mol	Chain	Analysed	Rotameric	Outliers	Percentiles	
1	A	208/221 (94%)	208 (100%)	0	100	100
1	B	208/221 (94%)	207 (100%)	1 (0%)	86	85
All	All	416/442 (94%)	415 (100%)	1 (0%)	92	92

All (1) residues with a non-rotameric sidechain are listed below:

Mol	Chain	Res	Type
1	B	5	ASP

Sometimes sidechains can be flipped to improve hydrogen bonding and reduce clashes. All (5) such sidechains are listed below:

Mol	Chain	Res	Type
1	A	113	HIS
1	A	284	ASN
1	B	30	HIS
1	B	113	HIS
1	B	169	GLN

5.3.3 RNA [i](#)

There are no RNA molecules in this entry.

5.4 Non-standard residues in protein, DNA, RNA chains [i](#)

There are no non-standard protein/DNA/RNA residues in this entry.

5.5 Carbohydrates [i](#)

There are no oligosaccharides in this entry.

5.6 Ligand geometry [i](#)

6 ligands are modelled in this entry.

In the following table, the Counts columns list the number of bonds (or angles) for which Mogul statistics could be retrieved, the number of bonds (or angles) that are observed in the model and the number of bonds (or angles) that are defined in the Chemical Component Dictionary. The Link column lists molecule types, if any, to which the group is linked. The Z score for a bond length (or angle) is the number of standard deviations the observed value is removed from the

expected value. A bond length (or angle) with $|Z| > 2$ is considered an outlier worth inspection. RMSZ is the root-mean-square of all Z scores of the bond lengths (or angles).

Mol	Type	Chain	Res	Link	Bond lengths			Bond angles		
					Counts	RMSZ	$\# Z > 2$	Counts	RMSZ	$\# Z > 2$
2	SO4	A	301	-	4,4,4	0.38	0	6,6,6	0.07	0
4	A1JDG	B	303	-	15,15,15	0.85	1 (6%)	17,20,20	1.67	1 (5%)
4	A1JDG	A	303	-	15,15,15	1.11	1 (6%)	17,20,20	2.06	1 (5%)
3	NAP	B	302	-	45,52,52	1.53	6 (13%)	56,80,80	1.28	4 (7%)
3	NAP	A	302	-	45,52,52	1.32	6 (13%)	56,80,80	1.36	7 (12%)
2	SO4	B	301	-	4,4,4	0.37	0	6,6,6	0.11	0

In the following table, the Chirals column lists the number of chiral outliers, the number of chiral centers analysed, the number of these observed in the model and the number defined in the Chemical Component Dictionary. Similar counts are reported in the Torsion and Rings columns. '-' means no outliers of that kind were identified.

Mol	Type	Chain	Res	Link	Chirals	Torsions	Rings
4	A1JDG	B	303	-	-	1/4/13/13	0/2/2/2
3	NAP	A	302	-	-	8/31/67/67	0/5/5/5
4	A1JDG	A	303	-	-	2/4/13/13	0/2/2/2
3	NAP	B	302	-	-	10/31/67/67	0/5/5/5

All (14) bond length outliers are listed below:

Mol	Chain	Res	Type	Atoms	Z	Observed(Å)	Ideal(Å)
3	B	302	NAP	C4N-C3N	6.94	1.51	1.39
3	A	302	NAP	C4N-C3N	5.13	1.48	1.39
4	A	303	A1JDG	C12-C2	3.75	1.55	1.52
3	B	302	NAP	C5N-C4N	3.42	1.46	1.38
3	B	302	NAP	C6N-C5N	-2.96	1.32	1.38
3	B	302	NAP	P2B-O2B	2.87	1.64	1.59
3	A	302	NAP	C6N-C5N	-2.78	1.32	1.38
3	A	302	NAP	P2B-O1X	2.71	1.59	1.50
3	A	302	NAP	C5N-C4N	2.54	1.44	1.38
3	A	302	NAP	C2N-N1N	2.51	1.38	1.35
4	B	303	A1JDG	C12-C2	2.51	1.54	1.52
3	B	302	NAP	C2N-N1N	2.50	1.38	1.35
3	A	302	NAP	P2B-O3X	-2.33	1.45	1.54
3	B	302	NAP	P2B-O3X	-2.01	1.47	1.54

All (13) bond angle outliers are listed below:

Mol	Chain	Res	Type	Atoms	Z	Observed(°)	Ideal(°)
4	A	303	A1JDG	C3-C2-C12	8.03	116.05	110.12
4	B	303	A1JDG	C3-C2-C12	6.06	114.59	110.12
3	A	302	NAP	C5N-C4N-C3N	-4.78	114.68	120.34
3	B	302	NAP	C5N-C4N-C3N	-4.62	114.88	120.34
3	A	302	NAP	C6N-N1N-C2N	-3.22	119.04	121.97
3	A	302	NAP	PN-O3-PA	2.84	142.58	132.83
3	A	302	NAP	O2A-PA-O1A	2.75	125.82	112.24
3	B	302	NAP	C3B-C2B-C1B	-2.45	98.29	102.89
3	A	302	NAP	O4B-C1B-C2B	-2.42	102.38	106.59
3	A	302	NAP	C5A-C6A-N6A	2.23	123.74	120.35
3	B	302	NAP	C6N-N1N-C2N	-2.11	120.05	121.97
3	B	302	NAP	C3N-C7N-N7N	2.06	120.22	117.75
3	A	302	NAP	C3D-C2D-C1D	2.03	104.03	100.98

There are no chirality outliers.

All (21) torsion outliers are listed below:

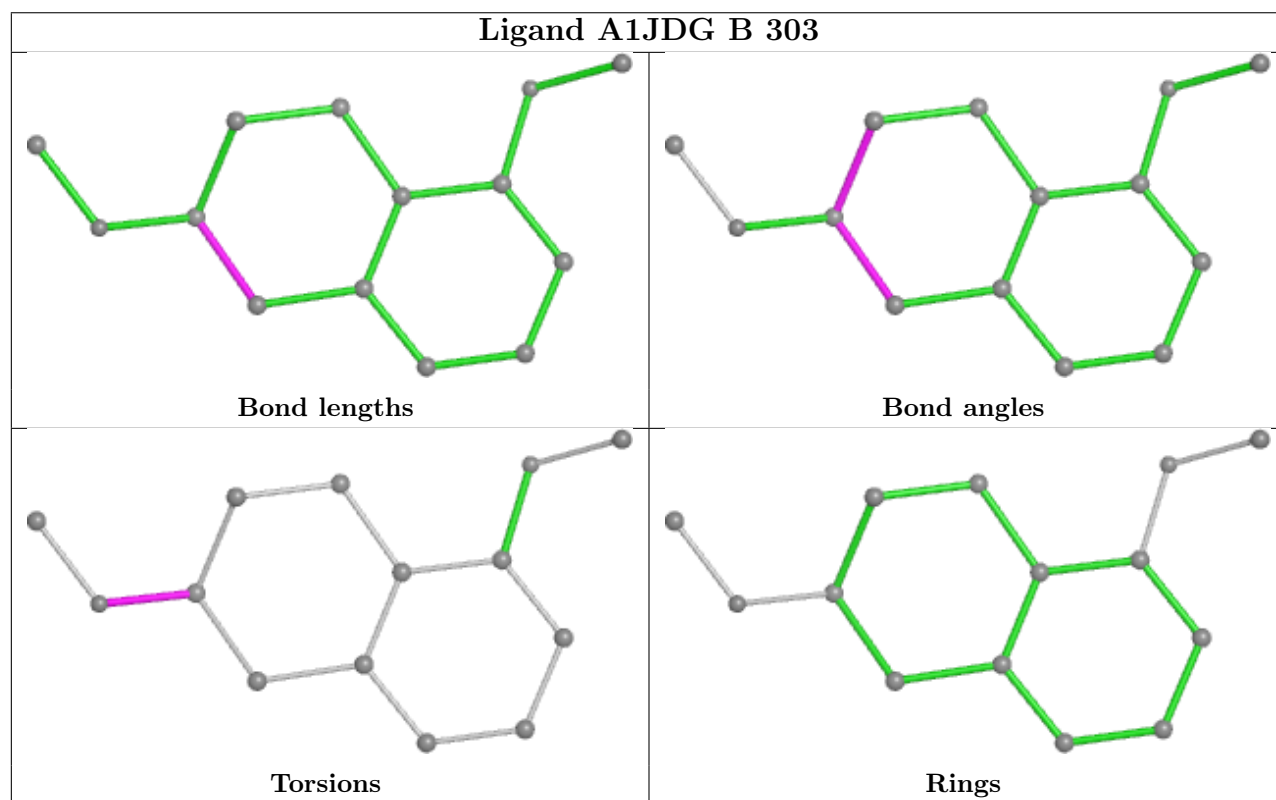
Mol	Chain	Res	Type	Atoms
3	A	302	NAP	PA-O3-PN-O5D
3	A	302	NAP	O4D-C1D-N1N-C2N
3	A	302	NAP	O4D-C1D-N1N-C6N
3	A	302	NAP	C2D-C1D-N1N-C2N
3	A	302	NAP	C2D-C1D-N1N-C6N
3	B	302	NAP	C5B-O5B-PA-O1A
3	B	302	NAP	C5B-O5B-PA-O3
3	B	302	NAP	O4D-C1D-N1N-C2N
3	B	302	NAP	O4D-C1D-N1N-C6N
3	B	302	NAP	C2D-C1D-N1N-C6N
4	B	303	A1JDG	C3-C2-N1-C1
3	A	302	NAP	C3B-C2B-O2B-P2B
3	A	302	NAP	C1B-C2B-O2B-P2B
3	B	302	NAP	C1B-C2B-O2B-P2B
4	A	303	A1JDG	C12-C2-N1-C1
3	B	302	NAP	PA-O3-PN-O5D
3	B	302	NAP	C5B-O5B-PA-O2A
3	B	302	NAP	C3B-C2B-O2B-P2B
4	A	303	A1JDG	C3-C2-N1-C1
3	B	302	NAP	C2D-C1D-N1N-C2N
3	A	302	NAP	C5B-O5B-PA-O1A

There are no ring outliers.

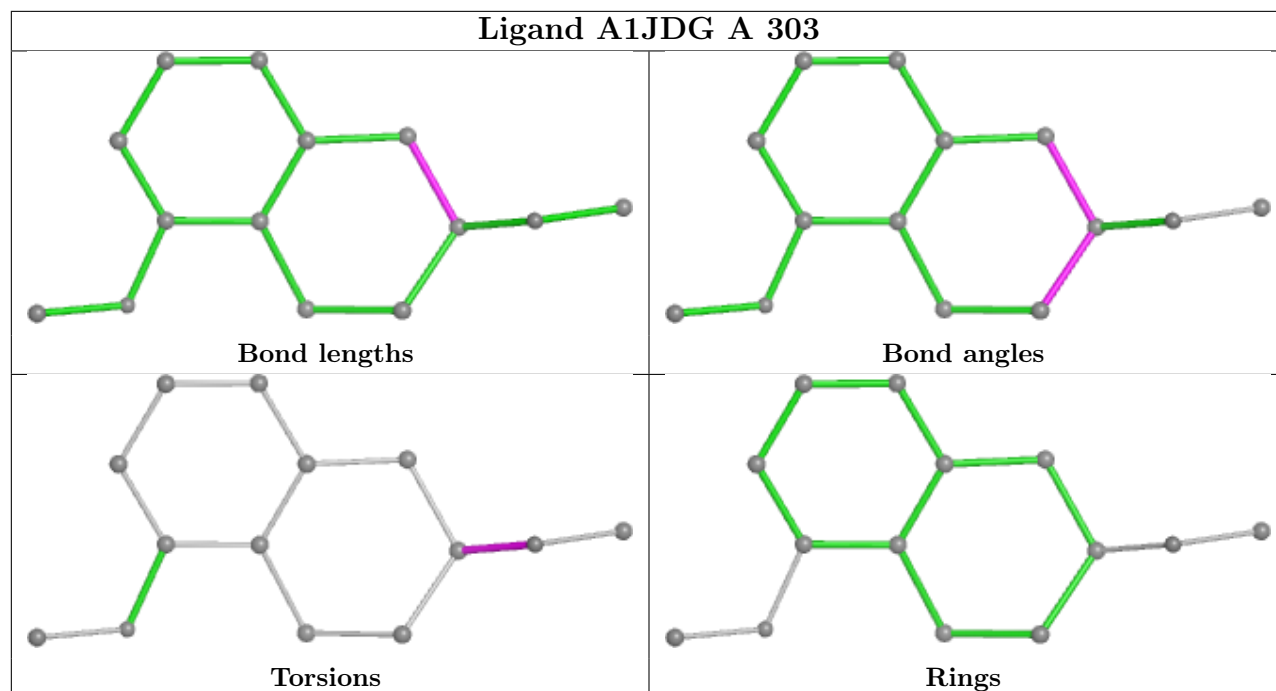
2 monomers are involved in 2 short contacts:

Mol	Chain	Res	Type	Clashes	Symm-Clashes
4	A	303	A1JDG	1	0
3	B	302	NAP	1	0

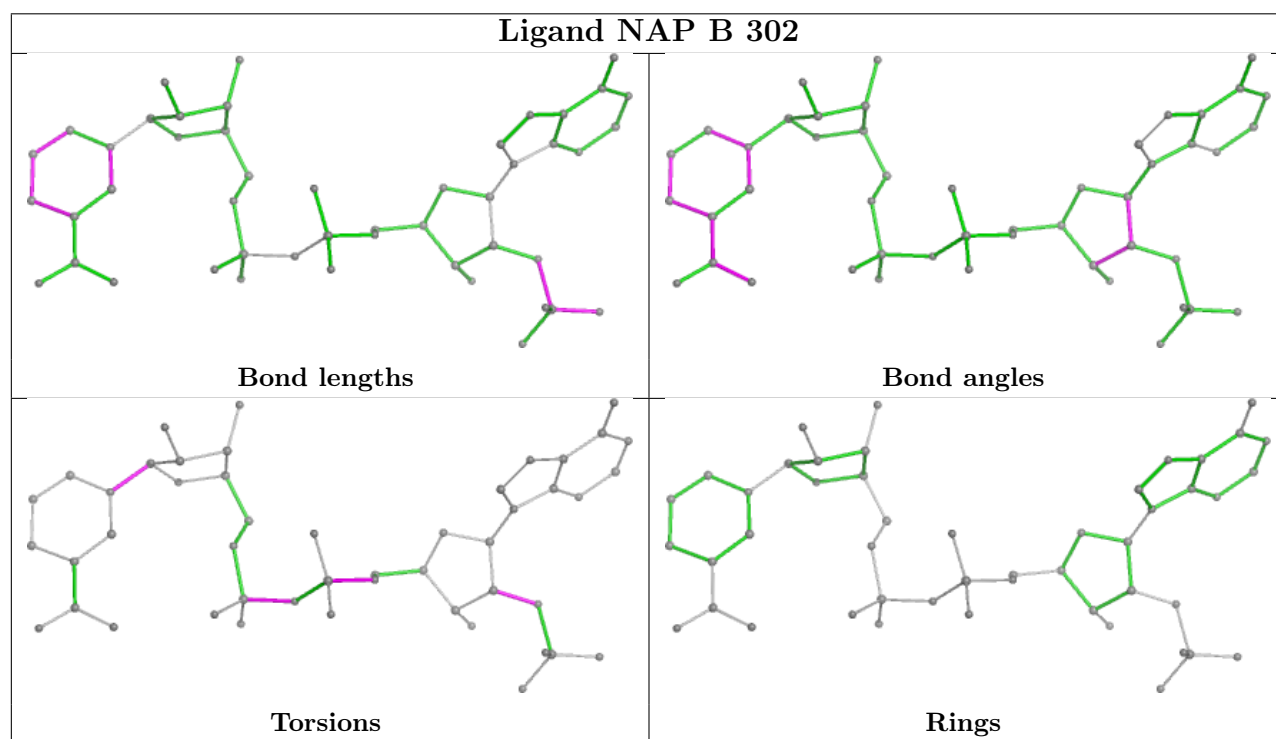
The following is a two-dimensional graphical depiction of Mogul quality analysis of bond lengths, bond angles, torsion angles, and ring geometry for all instances of the Ligand of Interest. In addition, ligands with molecular weight > 250 and outliers as shown on the validation Tables will also be included. For torsion angles, if less than 5% of the Mogul distribution of torsion angles is within 10 degrees of the torsion angle in question, then that torsion angle is considered an outlier. Any bond that is central to one or more torsion angles identified as an outlier by Mogul will be highlighted in the graph. For rings, the root-mean-square deviation (RMSD) between the ring in question and similar rings identified by Mogul is calculated over all ring torsion angles. If the average RMSD is greater than 60 degrees and the minimal RMSD between the ring in question and any Mogul-identified rings is also greater than 60 degrees, then that ring is considered an outlier. The outliers are highlighted in purple. The color gray indicates Mogul did not find sufficient equivalents in the CSD to analyse the geometry.

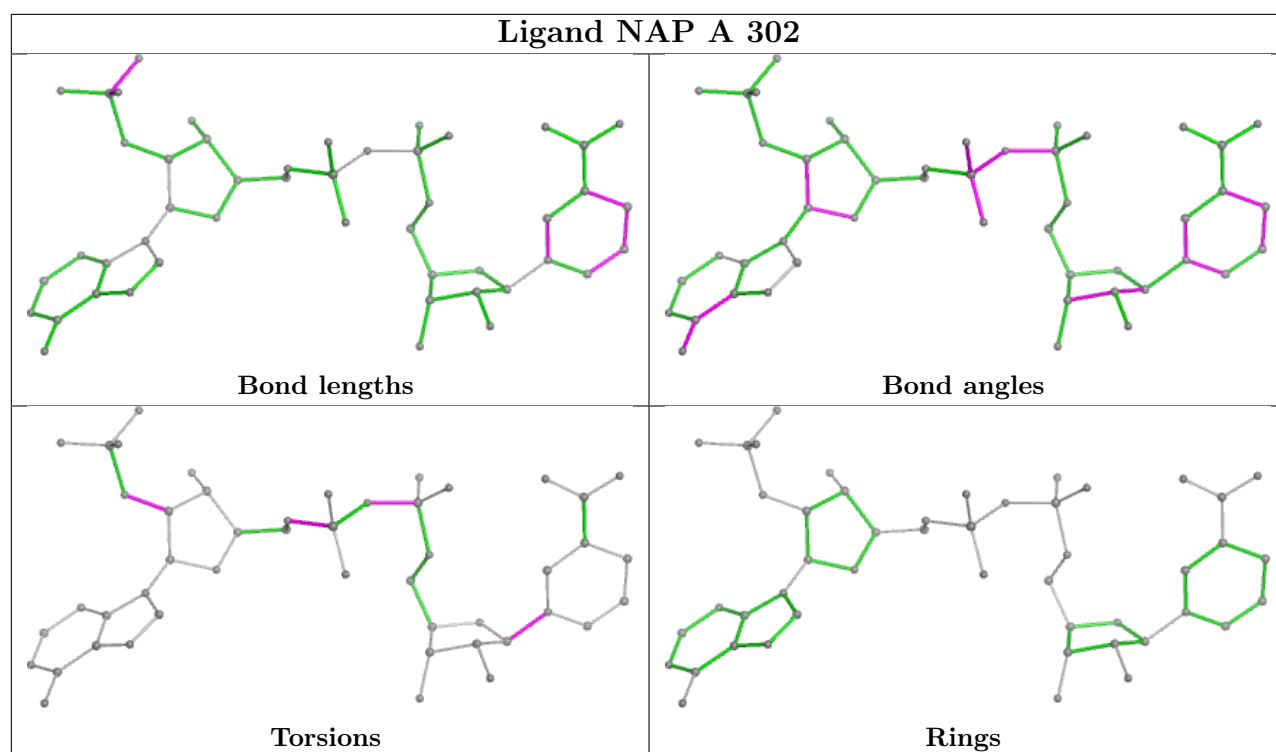


Ligand A1JDG A 303



Ligand NAP B 302





5.7 Other polymers [i](#)

There are no such residues in this entry.

5.8 Polymer linkage issues [i](#)

There are no chain breaks in this entry.

6 Fit of model and data [i](#)

6.1 Protein, DNA and RNA chains [i](#)

In the following table, the column labelled ‘#RSRZ > 2’ contains the number (and percentage) of RSRZ outliers, followed by percent RSRZ outliers for the chain as percentile scores relative to all X-ray entries and entries of similar resolution. The OWAB column contains the minimum, median, 95th percentile and maximum values of the occupancy-weighted average B-factor per residue. The column labelled ‘Q < 0.9’ lists the number of (and percentage) of residues with an average occupancy less than 0.9.

Mol	Chain	Analysed	<RSRZ>	#RSRZ>2	OWAB(Å ²)	Q<0.9
1	A	291/296 (98%)	0.15	8 (2%) 56 62	17, 27, 50, 72	0
1	B	291/296 (98%)	0.11	8 (2%) 56 62	17, 27, 44, 72	0
All	All	582/592 (98%)	0.13	16 (2%) 56 62	17, 27, 48, 72	0

All (16) RSRZ outliers are listed below:

Mol	Chain	Res	Type	RSRZ
1	B	5	ASP	5.8
1	A	231	ALA	4.8
1	A	5	ASP	4.3
1	A	233	LYS	4.0
1	A	227	ALA	3.8
1	B	231	ALA	3.6
1	A	228	ASP	3.3
1	B	224	ASN	3.1
1	B	233	LYS	2.7
1	A	224	ASN	2.3
1	B	225	PRO	2.3
1	B	221	GLY	2.2
1	A	232	ASP	2.1
1	A	225	PRO	2.1
1	B	227	ALA	2.0
1	B	222	GLY	2.0

6.2 Non-standard residues in protein, DNA, RNA chains [i](#)

There are no non-standard protein/DNA/RNA residues in this entry.

6.3 Carbohydrates [i](#)

There are no oligosaccharides in this entry.

6.4 Ligands [i](#)

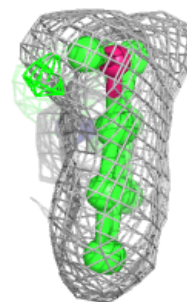
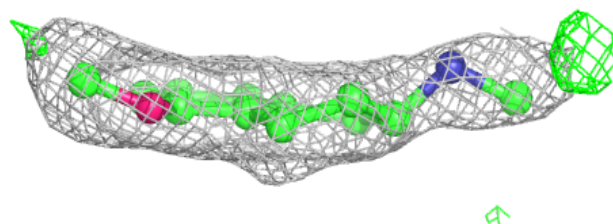
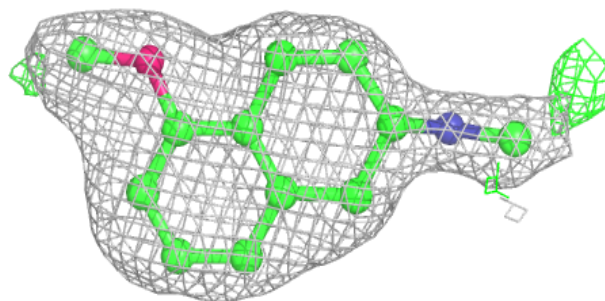
In the following table, the Atoms column lists the number of modelled atoms in the group and the number defined in the chemical component dictionary. The B-factors column lists the minimum, median, 95th percentile and maximum values of B factors of atoms in the group. The column labelled 'Q< 0.9' lists the number of atoms with occupancy less than 0.9.

Mol	Type	Chain	Res	Atoms	RSCC	RSR	B-factors(\AA^2)	Q<0.9
2	SO4	A	301	5/5	0.81	0.10	72,76,86,95	0
4	A1JDG	A	303	14/14	0.83	0.13	29,34,38,38	0
4	A1JDG	B	303	14/14	0.83	0.13	29,34,41,45	0
2	SO4	B	301	5/5	0.91	0.07	65,68,70,75	0
3	NAP	A	302	48/48	0.97	0.05	17,21,22,24	0
3	NAP	B	302	48/48	0.98	0.05	15,21,24,25	0

The following is a graphical depiction of the model fit to experimental electron density of all instances of the Ligand of Interest. In addition, ligands with molecular weight > 250 and outliers as shown on the geometry validation Tables will also be included. Each fit is shown from different orientation to approximate a three-dimensional view.

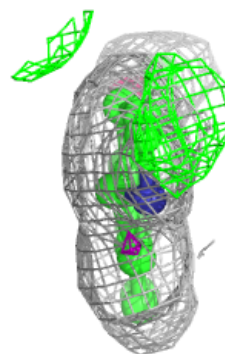
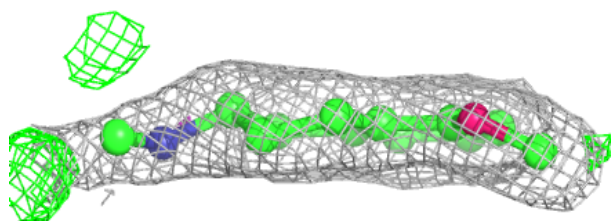
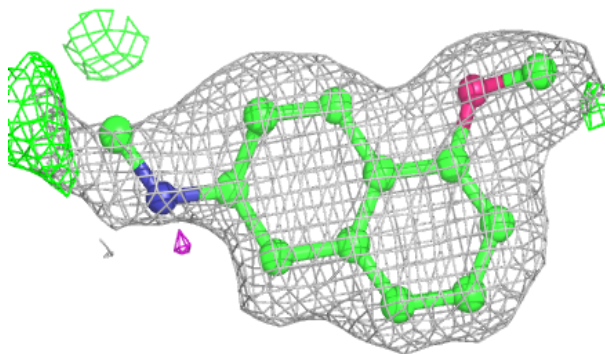
Electron density around A1JDG A 303:

2mF_o-DF_c (at 0.7 rmsd) in gray
mF_o-DF_c (at 3 rmsd) in purple (negative)
and green (positive)

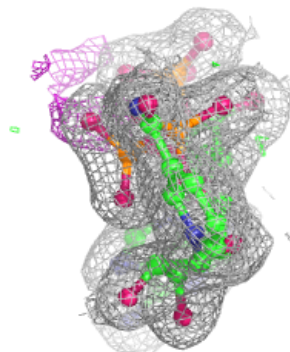
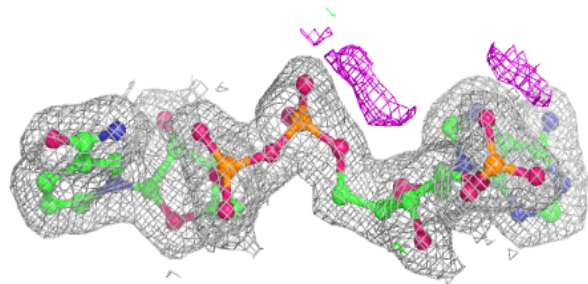
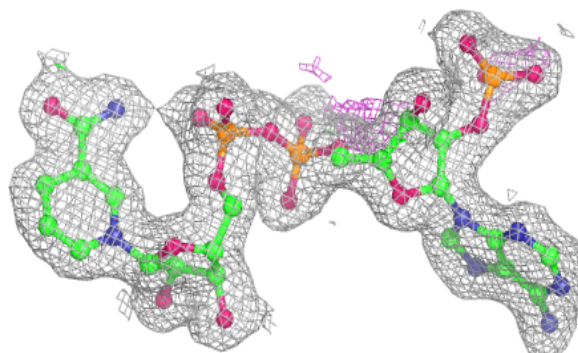


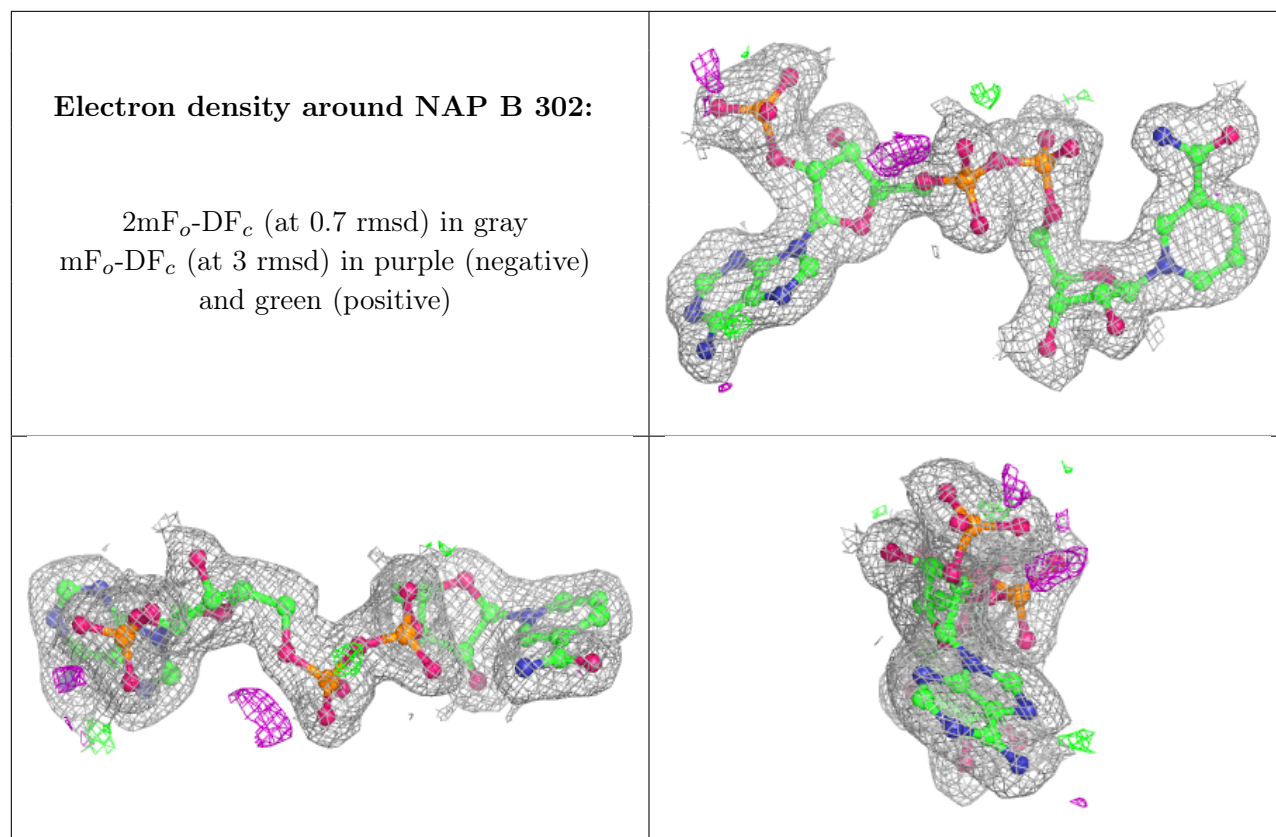
Electron density around A1JDG B 303:

$2mF_o-DF_c$ (at 0.7 rmsd) in gray
 mF_o-DF_c (at 3 rmsd) in purple (negative)
and green (positive)

**Electron density around NAP A 302:**

$2mF_o-DF_c$ (at 0.7 rmsd) in gray
 mF_o-DF_c (at 3 rmsd) in purple (negative)
and green (positive)





6.5 Other polymers [i](#)

There are no such residues in this entry.