



wwPDB X-ray Structure Validation Summary Report ⓘ

Nov 12, 2025 – 03:22 pm GMT

PDB ID : 9R6N / pdb_00009r6n
Title : Crystal structure of ALDH1A2 in complex with KyA33
Authors : Fang, C.; Esposito, M.; Huang, J.; Kang, Y.
Deposited on : 2025-05-13
Resolution : 1.40 Å(reported)

This is a wwPDB X-ray Structure Validation Summary Report for a publicly released PDB entry.

We welcome your comments at validation@mail.wwpdb.org

A user guide is available at

<https://www.wwpdb.org/validation/2017/XrayValidationReportHelp>

with specific help available everywhere you see the ⓘ symbol.

The types of validation reports are described at

<http://www.wwpdb.org/validation/2017/FAQs#types>.

The following versions of software and data (see [references ⓘ](#)) were used in the production of this report:

MolProbity : 4-5-2 with Phenix2.0
Mogul : 1.8.4, CSD as541be (2020)
Xtriage (Phenix) : 2.0
EDS : 3.0
buster-report : 1.1.7 (2018)
Percentile statistics : 20231227.v01 (using entries in the PDB archive December 27th 2023)
CCP4 : 9.0.010 (Gargrove)
Density-Fitness : 1.0.12
Ideal geometry (proteins) : Engh & Huber (2001)
Ideal geometry (DNA, RNA) : Parkinson et al. (1996)
Validation Pipeline (wwPDB-VP) : 2.46

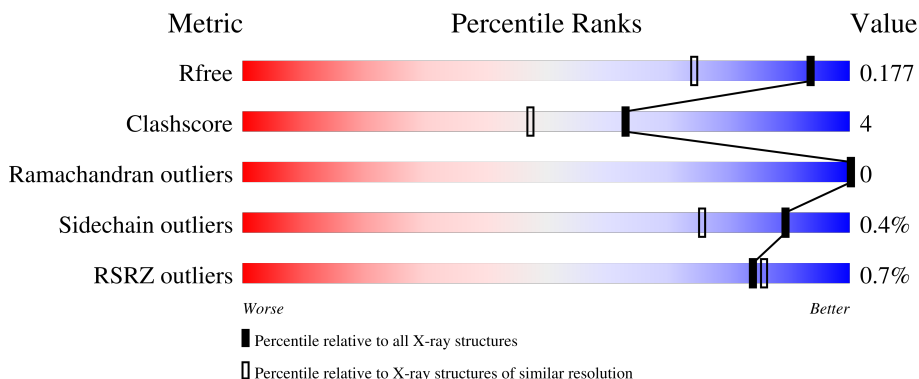
1 Overall quality at a glance

The following experimental techniques were used to determine the structure:

X-RAY DIFFRACTION

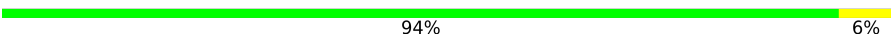
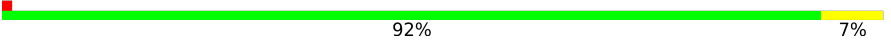
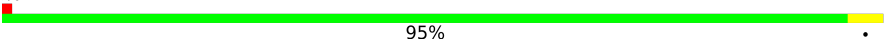
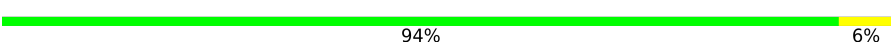
The reported resolution of this entry is 1.40 Å.

Percentile scores (ranging between 0-100) for global validation metrics of the entry are shown in the following graphic. The table shows the number of entries on which the scores are based.



Metric	Whole archive (#Entries)	Similar resolution (#Entries, resolution range(Å))
R_{free}	164625	2247 (1.40-1.40)
Clashscore	180529	2446 (1.40-1.40)
Ramachandran outliers	177936	2398 (1.40-1.40)
Sidechain outliers	177891	2397 (1.40-1.40)
RSRZ outliers	164620	2246 (1.40-1.40)

The table below summarises the geometric issues observed across the polymeric chains and their fit to the electron density. The red, orange, yellow and green segments of the lower bar indicate the fraction of residues that contain outliers for ≥ 3 , 2, 1 and 0 types of geometric quality criteria respectively. A grey segment represents the fraction of residues that are not modelled. The numeric value for each fraction is indicated below the corresponding segment, with a dot representing fractions $\leq 5\%$. The upper red bar (where present) indicates the fraction of residues that have poor fit to the electron density. The numeric value is given above the bar.

Mol	Chain	Length	Quality of chain
1	A	495	 94% 6%
1	B	495	 92% 7%
1	C	495	 95% .
1	D	495	 94% 6%

2 Entry composition [i](#)

There are 4 unique types of molecules in this entry. The entry contains 19120 atoms, of which 0 are hydrogens and 0 are deuteriums.

In the tables below, the ZeroOcc column contains the number of atoms modelled with zero occupancy, the AltConf column contains the number of residues with at least one atom in alternate conformation and the Trace column contains the number of residues modelled with at most 2 atoms.

- Molecule 1 is a protein called Retinal dehydrogenase 2.

Mol	Chain	Residues	Atoms					ZeroOcc	AltConf	Trace
1	A	493	Total	C	N	O	S	0	23	0
			3937	2512	671	734	20			
1	B	493	Total	C	N	O	S	0	15	0
			3895	2482	666	728	19			
1	C	493	Total	C	N	O	S	0	19	0
			3913	2498	663	731	21			
1	D	494	Total	C	N	O	S	0	21	0
			3933	2514	664	733	22			

There are 8 discrepancies between the modelled and reference sequences:

Chain	Residue	Modelled	Actual	Comment	Reference
A	24	GLY	-	expression tag	UNP O94788
A	25	SER	-	expression tag	UNP O94788
B	24	GLY	-	expression tag	UNP O94788
B	25	SER	-	expression tag	UNP O94788
C	24	GLY	-	expression tag	UNP O94788
C	25	SER	-	expression tag	UNP O94788
D	24	GLY	-	expression tag	UNP O94788
D	25	SER	-	expression tag	UNP O94788

- Molecule 2 is 1,2-ETHANEDIOL (CCD ID: EDO) (formula: C₂H₆O₂).



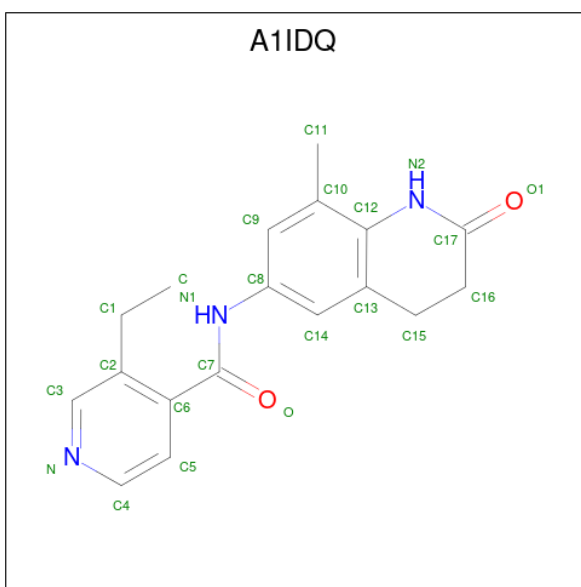
Mol	Chain	Residues	Atoms			ZeroOcc	AltConf
2	A	1	Total	C	O	0	0
			4	2	2		
2	A	1	Total	C	O	0	0
			4	2	2		
2	A	1	Total	C	O	0	0
			4	2	2		
2	A	1	Total	C	O	0	0
			4	2	2		
2	A	1	Total	C	O	0	0
			4	2	2		
2	A	1	Total	C	O	0	0
			4	2	2		
2	A	1	Total	C	O	0	0
			4	2	2		
2	A	1	Total	C	O	0	0
			4	2	2		
2	B	1	Total	C	O	0	0
			4	2	2		
2	B	1	Total	C	O	0	0
			4	2	2		
2	B	1	Total	C	O	0	0
			4	2	2		

Continued on next page...

Continued from previous page...

Mol	Chain	Residues	Atoms			ZeroOcc	AltConf
2	B	1	Total	C	O	0	0
			4	2	2		
2	B	1	Total	C	O	0	0
			4	2	2		
2	B	1	Total	C	O	0	0
			4	2	2		
2	C	1	Total	C	O	0	0
			4	2	2		
2	C	1	Total	C	O	0	0
			4	2	2		
2	C	1	Total	C	O	0	0
			4	2	2		
2	C	1	Total	C	O	0	0
			4	2	2		
2	C	1	Total	C	O	0	0
			4	2	2		
2	C	1	Total	C	O	0	0
			4	2	2		
2	D	1	Total	C	O	0	0
			4	2	2		
2	D	1	Total	C	O	0	0
			4	2	2		
2	D	1	Total	C	O	0	0
			4	2	2		
2	D	1	Total	C	O	0	0
			4	2	2		
2	D	1	Total	C	O	0	0
			4	2	2		
2	D	1	Total	C	O	0	0
			4	2	2		
2	D	1	Total	C	O	0	0
			4	2	2		

- Molecule 3 is 3-ethyl- {N}-(8-methyl-2-oxidanylidene-3,4-dihydro-1 {H}-quinolin-6-yl) pyridine-4-carboxamide (CCD ID: A1IDQ) (formula: C₁₈H₁₉N₃O₂) (labeled as "Ligand of Interest" by depositor).



Mol	Chain	Residues	Atoms				ZeroOcc	AltConf
3	A	1	Total	C	N	O	0	0
			23	18	3	2		
3	B	1	Total	C	N	O	0	0
			23	18	3	2		
3	C	1	Total	C	N	O	0	0
			23	18	3	2		
3	D	1	Total	C	N	O	0	0
			23	18	3	2		

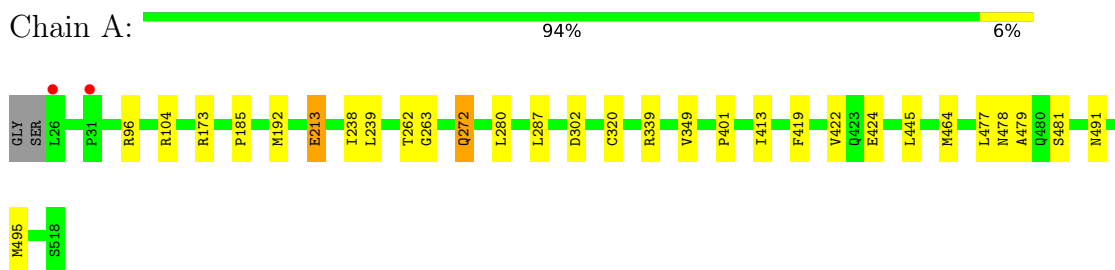
- Molecule 4 is water.

Mol	Chain	Residues	Atoms		ZeroOcc	AltConf
4	A	808	Total	O	0	6
			814	814		
4	B	774	Total	O	0	6
			780	780		
4	C	815	Total	O	0	6
			821	821		
4	D	797	Total	O	0	6
			803	803		

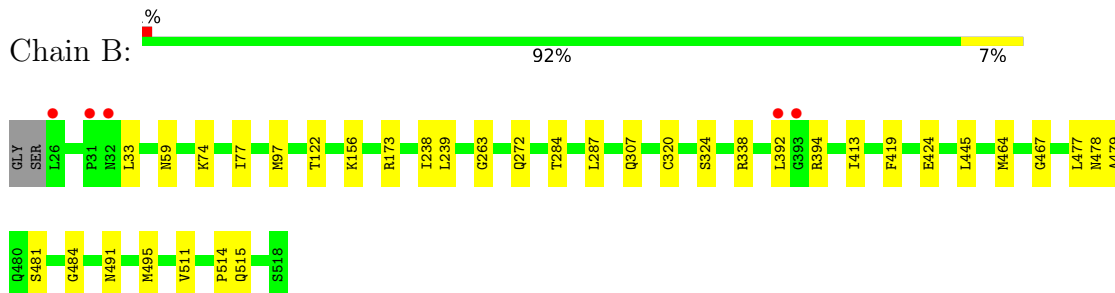
3 Residue-property plots [i](#)

These plots are drawn for all protein, RNA, DNA and oligosaccharide chains in the entry. The first graphic for a chain summarises the proportions of the various outlier classes displayed in the second graphic. The second graphic shows the sequence view annotated by issues in geometry and electron density. Residues are color-coded according to the number of geometric quality criteria for which they contain at least one outlier: green = 0, yellow = 1, orange = 2 and red = 3 or more. A red dot above a residue indicates a poor fit to the electron density ($RSRZ > 2$). Stretches of 2 or more consecutive residues without any outlier are shown as a green connector. Residues present in the sample, but not in the model, are shown in grey.

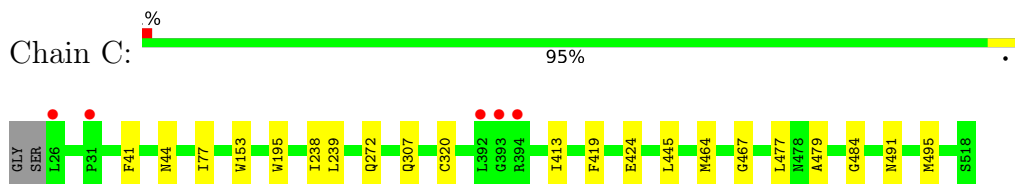
- Molecule 1: Retinal dehydrogenase 2



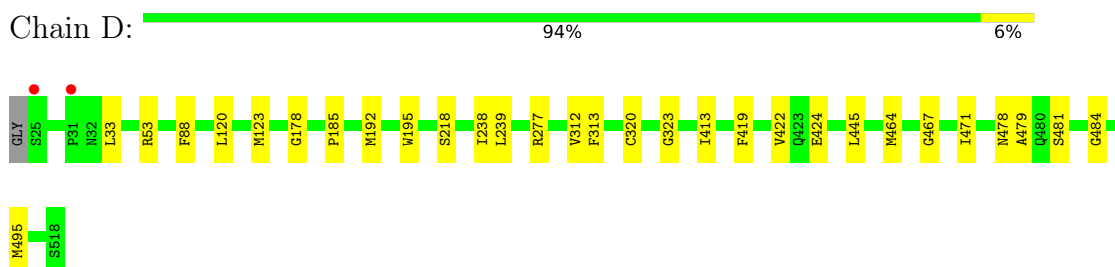
- Molecule 1: Retinal dehydrogenase 2



- Molecule 1: Retinal dehydrogenase 2



- Molecule 1: Retinal dehydrogenase 2



4 Data and refinement statistics

Property	Value	Source
Space group	P 1 21 1	Depositor
Cell constants a, b, c, α , β , γ	81.64Å 140.04Å 84.78Å 90.00° 93.93° 90.00°	Depositor
Resolution (Å)	29.82 – 1.40 29.82 – 1.40	Depositor EDS
% Data completeness (in resolution range)	98.1 (29.82-1.40) 98.3 (29.82-1.40)	Depositor EDS
R_{merge}	0.10	Depositor
R_{sym}	(Not available)	Depositor
$\langle I/\sigma(I) \rangle$ ¹	2.49 (at 1.40Å)	Xtriage
Refinement program	REFMAC 5.8.0352	Depositor
R, R_{free}	0.156 , 0.177 0.156 , 0.177	Depositor DCC
R_{free} test set	18647 reflections (5.01%)	wwPDB-VP
Wilson B-factor (Å ²)	11.9	Xtriage
Anisotropy	0.483	Xtriage
Bulk solvent k_{sol} (e/Å ³), B_{sol} (Å ²)	0.34 , 41.3	EDS
L-test for twinning ²	$\langle L \rangle = 0.48$, $\langle L^2 \rangle = 0.31$	Xtriage
Estimated twinning fraction	0.016 for l,k,h	Xtriage
F_o, F_c correlation	0.97	EDS
Total number of atoms	19120	wwPDB-VP
Average B, all atoms (Å ²)	16.0	wwPDB-VP

Xtriage's analysis on translational NCS is as follows: *The largest off-origin peak in the Patterson function is 3.36% of the height of the origin peak. No significant pseudotranslation is detected.*

¹Intensities estimated from amplitudes.

²Theoretical values of $\langle |L| \rangle$, $\langle L^2 \rangle$ for acentric reflections are 0.5, 0.333 respectively for untwinned datasets, and 0.375, 0.2 for perfectly twinned datasets.

5 Model quality [i](#)

5.1 Standard geometry [i](#)

Bond lengths and bond angles in the following residue types are not validated in this section: A1IDQ, EDO

The Z score for a bond length (or angle) is the number of standard deviations the observed value is removed from the expected value. A bond length (or angle) with $|Z| > 5$ is considered an outlier worth inspection. RMSZ is the root-mean-square of all Z scores of the bond lengths (or angles).

Mol	Chain	Bond lengths		Bond angles	
		RMSZ	$\# Z > 5$	RMSZ	$\# Z > 5$
1	A	0.43	0/4087	0.72	0/5525
1	B	0.44	0/4021	0.73	0/5439
1	C	0.44	0/4053	0.73	0/5482
1	D	0.44	0/4079	0.72	0/5517
All	All	0.44	0/16240	0.72	0/21963

There are no bond length outliers.

There are no bond angle outliers.

There are no chirality outliers.

There are no planarity outliers.

5.2 Too-close contacts [i](#)

In the following table, the Non-H and H(model) columns list the number of non-hydrogen atoms and hydrogen atoms in the chain respectively. The H(added) column lists the number of hydrogen atoms added and optimized by MolProbity. The Clashes column lists the number of clashes within the asymmetric unit, whereas Symm-Clashes lists symmetry-related clashes.

Mol	Chain	Non-H	H(model)	H(added)	Clashes	Symm-Clashes
1	A	3937	0	3973	34	0
1	B	3895	0	3907	29	0
1	C	3913	0	3929	30	0
1	D	3933	0	3962	36	0
2	A	44	0	66	2	0
2	B	24	0	36	1	0
2	C	28	0	42	0	0
2	D	36	0	54	0	0
3	A	23	0	0	1	0

Continued on next page...

Continued from previous page...

Mol	Chain	Non-H	H(model)	H(added)	Clashes	Symm-Clashes
3	B	23	0	0	1	0
3	C	23	0	0	1	0
3	D	23	0	0	0	0
4	A	814	0	0	7	2
4	B	780	0	0	4	0
4	C	821	0	0	4	1
4	D	803	0	0	1	1
All	All	19120	0	15969	123	2

The all-atom clashscore is defined as the number of clashes found per 1000 atoms (including hydrogen atoms). The all-atom clashscore for this structure is 4.

The worst 5 of 123 close contacts within the same asymmetric unit are listed below, sorted by their clash magnitude.

Atom-1	Atom-2	Interatomic distance (Å)	Clash overlap (Å)
1:C:195[B]:TRP:CZ2	1:C:495[B]:MET:HE2	1.41	1.52
1:C:195[B]:TRP:CZ2	1:C:495[B]:MET:CE	2.33	1.11
1:D:277[B]:ARG:HG3	1:D:277[B]:ARG:NH2	1.56	1.07
1:D:277[B]:ARG:HH21	1:D:277[B]:ARG:CG	1.73	1.02
1:B:478[B]:ASN:OD1	1:B:481[B]:SER:OG	1.79	0.99

All (2) symmetry-related close contacts are listed below. The label for Atom-2 includes the symmetry operator and encoded unit-cell translations to be applied.

Atom-1	Atom-2	Interatomic distance (Å)	Clash overlap (Å)
4:A:2077:HOH:O	4:C:2048:HOH:O[1_655]	2.09	0.11
4:A:1841:HOH:O	4:D:1203:HOH:O[1_556]	2.17	0.03

5.3 Torsion angles [i](#)

5.3.1 Protein backbone [i](#)

In the following table, the Percentiles column shows the percent Ramachandran outliers of the chain as a percentile score with respect to all X-ray entries followed by that with respect to entries of similar resolution.

The Analysed column shows the number of residues for which the backbone conformation was analysed, and the total number of residues.

Mol	Chain	Analysed	Favoured	Allowed	Outliers	Percentiles	
1	A	514/495 (104%)	505 (98%)	9 (2%)	0	100	100
1	B	506/495 (102%)	494 (98%)	12 (2%)	0	100	100
1	C	510/495 (103%)	499 (98%)	11 (2%)	0	100	100
1	D	513/495 (104%)	503 (98%)	10 (2%)	0	100	100
All	All	2043/1980 (103%)	2001 (98%)	42 (2%)	0	100	100

There are no Ramachandran outliers to report.

5.3.2 Protein sidechains ⓘ

In the following table, the Percentiles column shows the percent sidechain outliers of the chain as a percentile score with respect to all X-ray entries followed by that with respect to entries of similar resolution.

The Analysed column shows the number of residues for which the sidechain conformation was analysed, and the total number of residues.

Mol	Chain	Analysed	Rotameric	Outliers	Percentiles	
1	A	425/403 (106%)	420 (99%)	5 (1%)	67	41
1	B	417/403 (104%)	416 (100%)	1 (0%)	92	79
1	C	421/403 (104%)	420 (100%)	1 (0%)	92	79
1	D	424/403 (105%)	423 (100%)	1 (0%)	92	79
All	All	1687/1612 (105%)	1679 (100%)	8 (0%)	89	71

5 of 8 residues with a non-rotameric sidechain are listed below:

Mol	Chain	Res	Type
1	D	419	PHE
1	C	419	PHE
1	A	419	PHE
1	A	272[B]	GLN
1	B	419	PHE

Sometimes sidechains can be flipped to improve hydrogen bonding and reduce clashes. 5 of 10 such sidechains are listed below:

Mol	Chain	Res	Type
1	C	182	GLN
1	D	43	ASN
1	D	182	GLN

Continued on next page...

Continued from previous page...

Mol	Chain	Res	Type
1	B	43	ASN
1	B	182	GLN

5.3.3 RNA [i](#)

There are no RNA molecules in this entry.

5.4 Non-standard residues in protein, DNA, RNA chains [i](#)

There are no non-standard protein/DNA/RNA residues in this entry.

5.5 Carbohydrates [i](#)

There are no oligosaccharides in this entry.

5.6 Ligand geometry [i](#)

37 ligands are modelled in this entry.

In the following table, the Counts columns list the number of bonds (or angles) for which Mogul statistics could be retrieved, the number of bonds (or angles) that are observed in the model and the number of bonds (or angles) that are defined in the Chemical Component Dictionary. The Link column lists molecule types, if any, to which the group is linked. The Z score for a bond length (or angle) is the number of standard deviations the observed value is removed from the expected value. A bond length (or angle) with $|Z| > 2$ is considered an outlier worth inspection. RMSZ is the root-mean-square of all Z scores of the bond lengths (or angles).

Mol	Type	Chain	Res	Link	Bond lengths			Bond angles		
					Counts	RMSZ	# $ Z > 2$	Counts	RMSZ	# $ Z > 2$
2	EDO	C	1505	-	3,3,3	0.04	0	2,2,2	0.15	0
3	A1IDQ	A	1511	-	25,25,25	0.90	1 (4%)	34,35,35	1.17	2 (5%)
2	EDO	A	1512	-	3,3,3	0.11	0	2,2,2	0.33	0
2	EDO	B	606	-	3,3,3	0.07	0	2,2,2	0.08	0
2	EDO	D	609	-	3,3,3	0.17	0	2,2,2	0.18	0
2	EDO	D	604	-	3,3,3	0.06	0	2,2,2	0.22	0
3	A1IDQ	B	607	-	25,25,25	1.03	1 (4%)	34,35,35	1.23	4 (11%)
3	A1IDQ	D	610	-	25,25,25	0.86	1 (4%)	34,35,35	1.16	3 (8%)
2	EDO	D	603	-	3,3,3	0.16	0	2,2,2	0.10	0
2	EDO	C	1502	-	3,3,3	0.07	0	2,2,2	0.26	0
2	EDO	B	604	-	3,3,3	0.02	0	2,2,2	0.22	0

Mol	Type	Chain	Res	Link	Bond lengths			Bond angles		
					Counts	RMSZ	# Z > 2	Counts	RMSZ	# Z > 2
2	EDO	B	602	-	3,3,3	0.08	0	2,2,2	0.25	0
2	EDO	A	1501	-	3,3,3	0.10	0	2,2,2	0.35	0
2	EDO	A	1506	-	3,3,3	0.05	0	2,2,2	0.14	0
2	EDO	A	1507	-	3,3,3	0.10	0	2,2,2	0.19	0
3	A1IDQ	C	1507	-	25,25,25	0.87	1 (4%)	34,35,35	1.10	2 (5%)
2	EDO	B	603	-	3,3,3	0.04	0	2,2,2	0.13	0
2	EDO	A	1503	-	3,3,3	0.05	0	2,2,2	0.11	0
2	EDO	A	1504	-	3,3,3	0.15	0	2,2,2	0.15	0
2	EDO	C	1503	-	3,3,3	0.05	0	2,2,2	0.22	0
2	EDO	C	1506	-	3,3,3	0.10	0	2,2,2	0.07	0
2	EDO	D	602	-	3,3,3	0.08	0	2,2,2	0.38	0
2	EDO	D	608	-	3,3,3	0.06	0	2,2,2	0.18	0
2	EDO	A	1510	-	3,3,3	0.12	0	2,2,2	0.09	0
2	EDO	B	605	-	3,3,3	0.11	0	2,2,2	0.20	0
2	EDO	B	601	-	3,3,3	0.06	0	2,2,2	0.18	0
2	EDO	A	1508	-	3,3,3	0.12	0	2,2,2	0.11	0
2	EDO	D	601	-	3,3,3	0.05	0	2,2,2	0.09	0
2	EDO	A	1502	-	3,3,3	0.05	0	2,2,2	0.17	0
2	EDO	D	607	-	3,3,3	0.12	0	2,2,2	0.31	0
2	EDO	A	1505	-	3,3,3	0.02	0	2,2,2	0.12	0
2	EDO	A	1509	-	3,3,3	0.06	0	2,2,2	0.13	0
2	EDO	C	1501	-	3,3,3	0.07	0	2,2,2	0.24	0
2	EDO	C	1508	-	3,3,3	0.11	0	2,2,2	0.08	0
2	EDO	D	605	-	3,3,3	0.05	0	2,2,2	0.19	0
2	EDO	C	1504	-	3,3,3	0.05	0	2,2,2	0.14	0
2	EDO	D	606	-	3,3,3	0.03	0	2,2,2	0.12	0

In the following table, the Chirals column lists the number of chiral outliers, the number of chiral centers analysed, the number of these observed in the model and the number defined in the Chemical Component Dictionary. Similar counts are reported in the Torsion and Rings columns. '-' means no outliers of that kind were identified.

Mol	Type	Chain	Res	Link	Chirals	Torsions	Rings
2	EDO	C	1505	-	-	1/1/1/1	-
3	A1IDQ	A	1511	-	-	0/10/19/19	0/3/3/3
2	EDO	A	1512	-	-	1/1/1/1	-
2	EDO	B	606	-	-	0/1/1/1	-
2	EDO	D	609	-	-	0/1/1/1	-
2	EDO	D	604	-	-	1/1/1/1	-
3	A1IDQ	B	607	-	-	0/10/19/19	0/3/3/3
3	A1IDQ	D	610	-	-	0/10/19/19	0/3/3/3
2	EDO	D	603	-	-	0/1/1/1	-

Continued on next page...

Continued from previous page...

Mol	Type	Chain	Res	Link	Chirals	Torsions	Rings
2	EDO	C	1502	-	-	1/1/1/1	-
2	EDO	B	604	-	-	1/1/1/1	-
2	EDO	B	602	-	-	0/1/1/1	-
2	EDO	A	1501	-	-	1/1/1/1	-
2	EDO	A	1506	-	-	0/1/1/1	-
2	EDO	A	1507	-	-	1/1/1/1	-
3	A1IDQ	C	1507	-	-	0/10/19/19	0/3/3/3
2	EDO	B	603	-	-	0/1/1/1	-
2	EDO	A	1503	-	-	0/1/1/1	-
2	EDO	A	1504	-	-	0/1/1/1	-
2	EDO	C	1503	-	-	0/1/1/1	-
2	EDO	C	1506	-	-	0/1/1/1	-
2	EDO	D	602	-	-	1/1/1/1	-
2	EDO	D	608	-	-	1/1/1/1	-
2	EDO	A	1510	-	-	0/1/1/1	-
2	EDO	B	605	-	-	0/1/1/1	-
2	EDO	B	601	-	-	1/1/1/1	-
2	EDO	A	1508	-	-	0/1/1/1	-
2	EDO	D	601	-	-	1/1/1/1	-
2	EDO	A	1502	-	-	0/1/1/1	-
2	EDO	D	607	-	-	0/1/1/1	-
2	EDO	A	1505	-	-	0/1/1/1	-
2	EDO	A	1509	-	-	0/1/1/1	-
2	EDO	C	1501	-	-	1/1/1/1	-
2	EDO	C	1508	-	-	0/1/1/1	-
2	EDO	D	605	-	-	1/1/1/1	-
2	EDO	C	1504	-	-	0/1/1/1	-
2	EDO	D	606	-	-	0/1/1/1	-

All (4) bond length outliers are listed below:

Mol	Chain	Res	Type	Atoms	Z	Observed(Å)	Ideal(Å)
3	B	607	A1IDQ	C17-N2	3.10	1.38	1.35
3	C	1507	A1IDQ	C17-N2	2.34	1.37	1.35
3	A	1511	A1IDQ	C14-C8	2.14	1.43	1.39
3	D	610	A1IDQ	C14-C8	2.03	1.42	1.39

The worst 5 of 11 bond angle outliers are listed below:

Mol	Chain	Res	Type	Atoms	Z	Observed(°)	Ideal(°)
3	B	607	A1IDQ	O1-C17-N2	-3.94	117.96	121.43
3	A	1511	A1IDQ	O1-C17-N2	-3.73	118.14	121.43

Continued on next page...

Continued from previous page...

Mol	Chain	Res	Type	Atoms	Z	Observed(°)	Ideal(°)
3	D	610	A1IDQ	O1-C17-N2	-3.55	118.30	121.43
3	C	1507	A1IDQ	O1-C17-N2	-3.13	118.67	121.43
3	A	1511	A1IDQ	C16-C17-N2	3.12	118.57	116.24

There are no chirality outliers.

5 of 13 torsion outliers are listed below:

Mol	Chain	Res	Type	Atoms
2	A	1507	EDO	O1-C1-C2-O2
2	B	601	EDO	O1-C1-C2-O2
2	D	602	EDO	O1-C1-C2-O2
2	D	605	EDO	O1-C1-C2-O2
2	A	1501	EDO	O1-C1-C2-O2

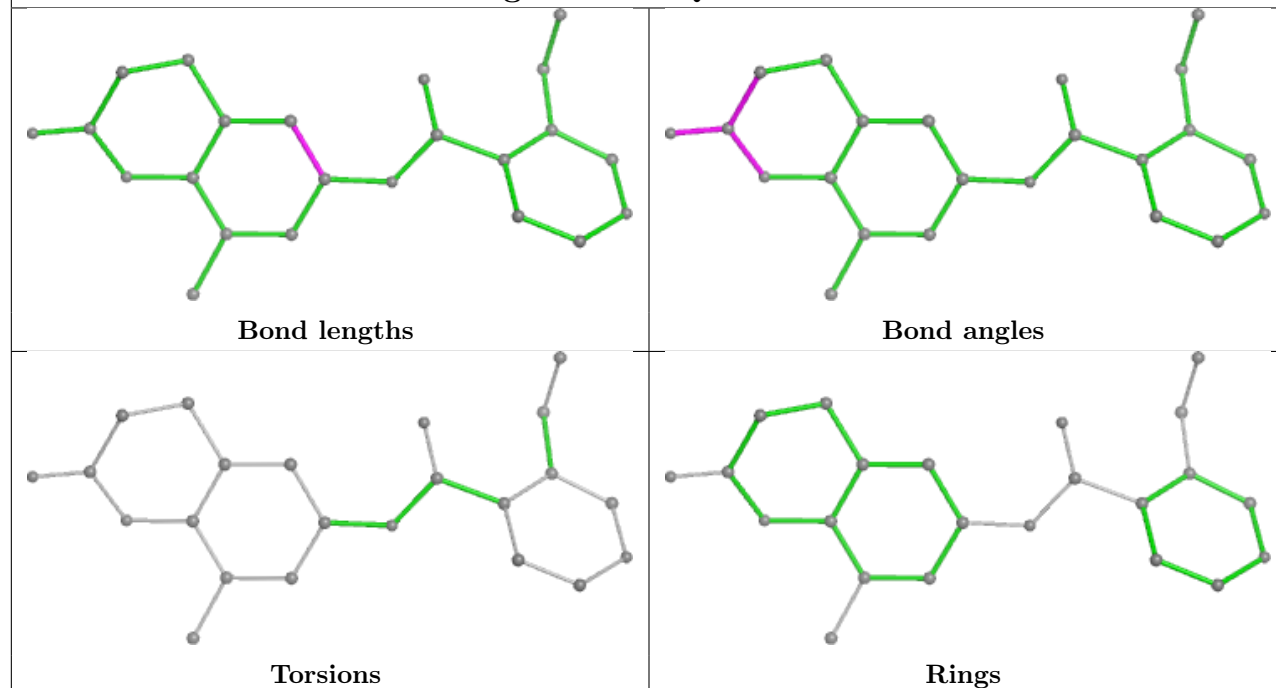
There are no ring outliers.

6 monomers are involved in 6 short contacts:

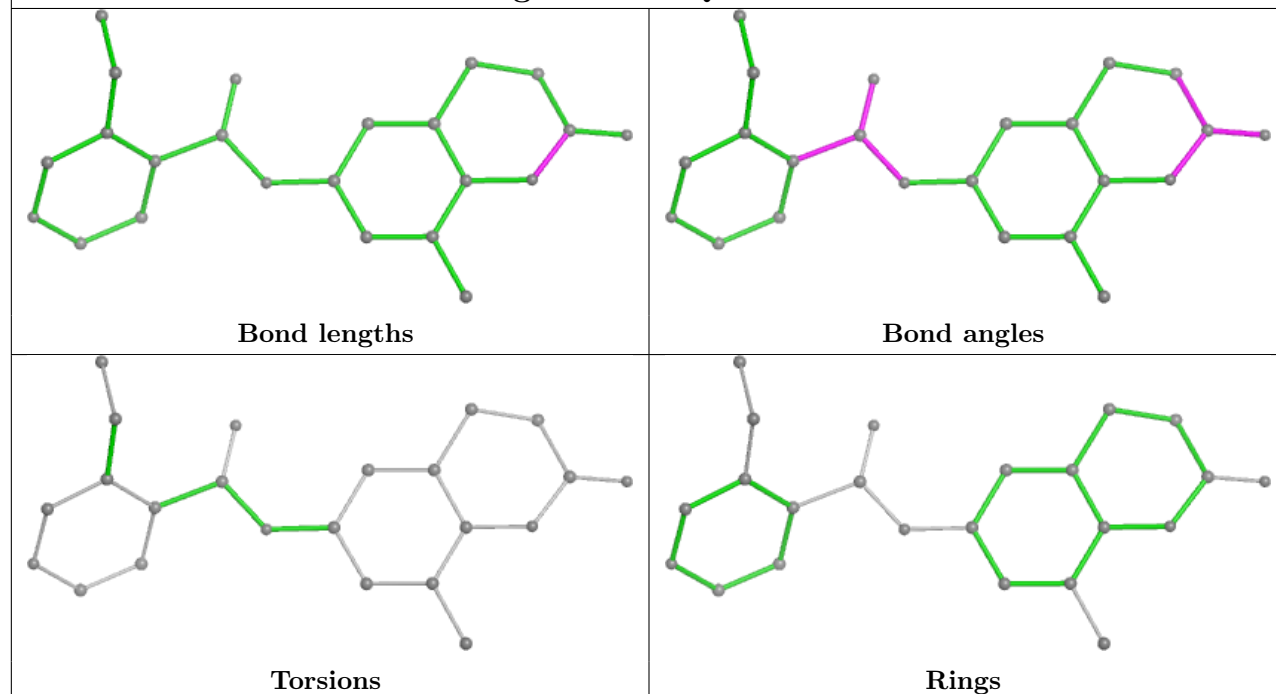
Mol	Chain	Res	Type	Clashes	Symm-Clashes
3	A	1511	A1IDQ	1	0
2	A	1512	EDO	1	0
3	B	607	A1IDQ	1	0
2	B	604	EDO	1	0
2	A	1501	EDO	1	0
3	C	1507	A1IDQ	1	0

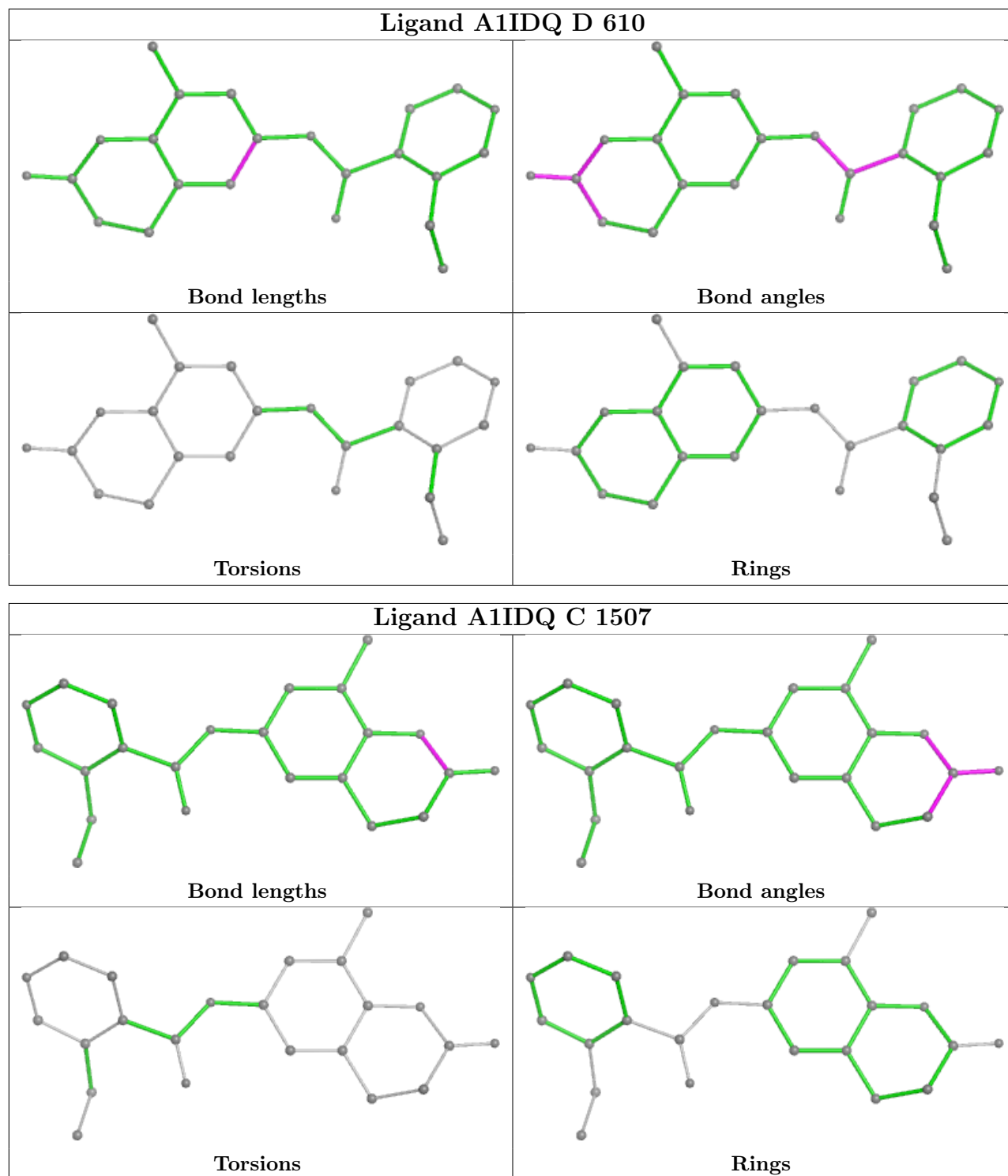
The following is a two-dimensional graphical depiction of Mogul quality analysis of bond lengths, bond angles, torsion angles, and ring geometry for all instances of the Ligand of Interest. In addition, ligands with molecular weight > 250 and outliers as shown on the validation Tables will also be included. For torsion angles, if less than 5% of the Mogul distribution of torsion angles is within 10 degrees of the torsion angle in question, then that torsion angle is considered an outlier. Any bond that is central to one or more torsion angles identified as an outlier by Mogul will be highlighted in the graph. For rings, the root-mean-square deviation (RMSD) between the ring in question and similar rings identified by Mogul is calculated over all ring torsion angles. If the average RMSD is greater than 60 degrees and the minimal RMSD between the ring in question and any Mogul-identified rings is also greater than 60 degrees, then that ring is considered an outlier. The outliers are highlighted in purple. The color gray indicates Mogul did not find sufficient equivalents in the CSD to analyse the geometry.

Ligand A1IDQ A 1511



Ligand A1IDQ B 607





5.7 Other polymers [i](#)

There are no such residues in this entry.

5.8 Polymer linkage issues ⓘ

There are no chain breaks in this entry.

6 Fit of model and data [i](#)

6.1 Protein, DNA and RNA chains [i](#)

In the following table, the column labelled ‘#RSRZ > 2’ contains the number (and percentage) of RSRZ outliers, followed by percent RSRZ outliers for the chain as percentile scores relative to all X-ray entries and entries of similar resolution. The OWAB column contains the minimum, median, 95th percentile and maximum values of the occupancy-weighted average B-factor per residue. The column labelled ‘Q < 0.9’ lists the number of (and percentage) of residues with an average occupancy less than 0.9.

Mol	Chain	Analysed	<RSRZ>	#RSRZ>2	OWAB(Å ²)	Q<0.9
1	A	493/495 (99%)	-0.27	2 (0%) 89 90	6, 11, 20, 29	23 (4%)
1	B	493/495 (99%)	-0.17	5 (1%) 79 81	7, 13, 22, 35	15 (3%)
1	C	493/495 (99%)	-0.17	5 (1%) 79 81	7, 13, 21, 34	19 (3%)
1	D	494/495 (99%)	-0.24	2 (0%) 89 90	6, 12, 21, 42	21 (4%)
All	All	1973/1980 (99%)	-0.21	14 (0%) 84 86	6, 12, 21, 42	78 (3%)

The worst 5 of 14 RSRZ outliers are listed below:

Mol	Chain	Res	Type	RSRZ
1	C	394[A]	ARG	3.6
1	C	393	GLY	3.2
1	B	393	GLY	3.1
1	C	26	LEU	3.0
1	C	392	LEU	2.8

6.2 Non-standard residues in protein, DNA, RNA chains [i](#)

There are no non-standard protein/DNA/RNA residues in this entry.

6.3 Carbohydrates [i](#)

There are no oligosaccharides in this entry.

6.4 Ligands [i](#)

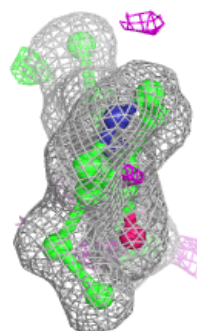
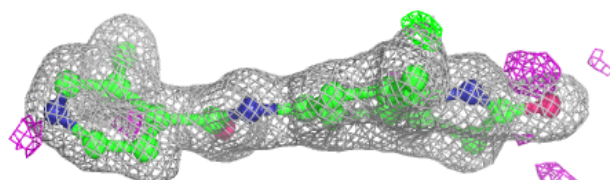
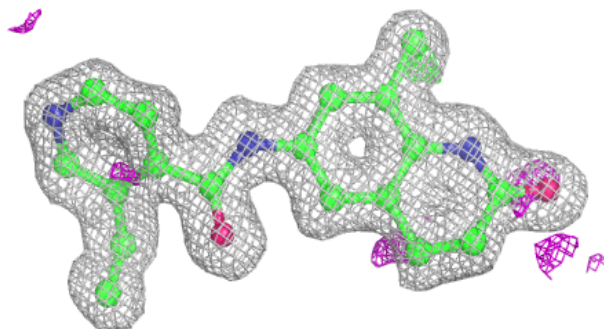
In the following table, the Atoms column lists the number of modelled atoms in the group and the number defined in the chemical component dictionary. The B-factors column lists the minimum, median, 95th percentile and maximum values of B factors of atoms in the group. The column labelled ‘Q < 0.9’ lists the number of atoms with occupancy less than 0.9.

Mol	Type	Chain	Res	Atoms	RSCC	RSR	B-factors(\AA^2)	Q<0.9
2	EDO	A	1503	4/4	0.71	0.20	30,30,31,33	0
2	EDO	A	1506	4/4	0.73	0.25	39,40,40,42	0
2	EDO	D	601	4/4	0.73	0.19	32,33,34,36	0
2	EDO	D	608	4/4	0.73	0.14	49,49,50,51	0
2	EDO	D	602	4/4	0.74	0.16	26,28,28,30	0
2	EDO	B	603	4/4	0.76	0.17	27,33,36,38	0
2	EDO	B	604	4/4	0.77	0.15	32,34,35,38	0
2	EDO	C	1501	4/4	0.77	0.15	27,27,29,30	0
2	EDO	C	1502	4/4	0.77	0.15	36,38,39,40	0
2	EDO	D	605	4/4	0.78	0.19	37,37,40,41	0
2	EDO	A	1501	4/4	0.78	0.14	27,29,29,31	0
2	EDO	A	1507	4/4	0.79	0.17	35,35,37,37	0
2	EDO	A	1510	4/4	0.79	0.15	25,25,27,27	0
2	EDO	B	606	4/4	0.79	0.16	33,34,36,36	0
2	EDO	B	602	4/4	0.80	0.17	22,26,26,27	0
2	EDO	A	1512	4/4	0.80	0.14	29,30,31,31	0
2	EDO	C	1508	4/4	0.81	0.17	29,30,31,32	0
2	EDO	D	607	4/4	0.81	0.16	19,23,23,23	0
2	EDO	D	604	4/4	0.81	0.14	27,28,28,33	0
2	EDO	A	1505	4/4	0.82	0.15	22,25,26,31	0
2	EDO	D	606	4/4	0.82	0.14	22,25,26,32	0
2	EDO	A	1509	4/4	0.83	0.15	17,19,19,21	0
2	EDO	C	1505	4/4	0.83	0.15	26,32,34,36	0
2	EDO	B	601	4/4	0.84	0.13	38,40,41,43	0
2	EDO	C	1504	4/4	0.86	0.12	31,34,34,35	0
2	EDO	C	1503	4/4	0.91	0.10	20,23,24,25	0
2	EDO	A	1502	4/4	0.92	0.09	24,26,26,26	0
3	A1IDQ	C	1507	23/23	0.93	0.08	14,15,16,17	0
3	A1IDQ	A	1511	23/23	0.94	0.07	13,14,15,15	0
3	A1IDQ	D	610	23/23	0.95	0.07	12,14,15,16	0
2	EDO	D	603	4/4	0.96	0.07	18,19,19,19	0
3	A1IDQ	B	607	23/23	0.96	0.06	13,14,15,16	0
2	EDO	A	1504	4/4	0.97	0.09	17,17,18,18	0
2	EDO	C	1506	4/4	0.97	0.05	13,13,14,14	0
2	EDO	A	1508	4/4	0.97	0.06	10,11,11,11	0
2	EDO	B	605	4/4	0.98	0.04	13,13,14,15	0
2	EDO	D	609	4/4	0.98	0.05	11,11,12,12	0

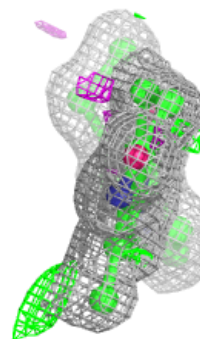
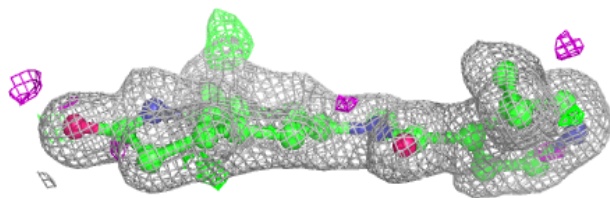
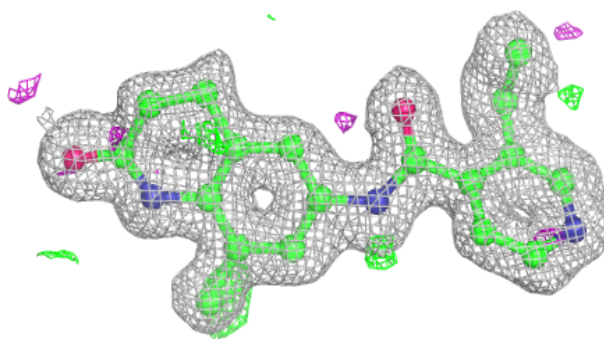
The following is a graphical depiction of the model fit to experimental electron density of all instances of the Ligand of Interest. In addition, ligands with molecular weight > 250 and outliers as shown on the geometry validation Tables will also be included. Each fit is shown from different orientation to approximate a three-dimensional view.

Electron density around A1IDQ C 1507:

$2mF_o-DF_c$ (at 0.7 rmsd) in gray
 mF_o-DF_c (at 3 rmsd) in purple (negative)
and green (positive)

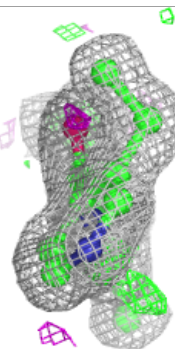
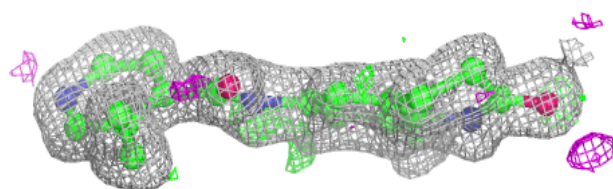
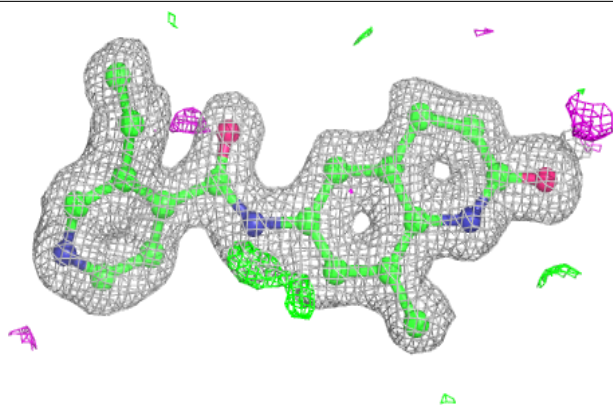
**Electron density around A1IDQ A 1511:**

$2mF_o-DF_c$ (at 0.7 rmsd) in gray
 mF_o-DF_c (at 3 rmsd) in purple (negative)
and green (positive)

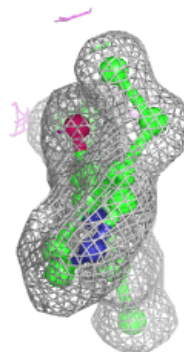
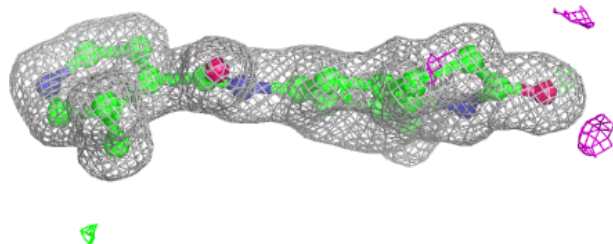
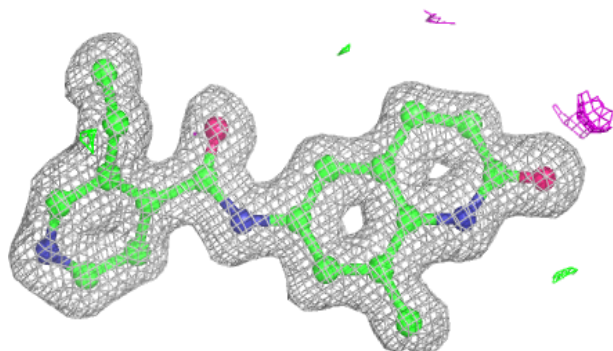


Electron density around A1IDQ D 610:

$2mF_o-DF_c$ (at 0.7 rmsd) in gray
 mF_o-DF_c (at 3 rmsd) in purple (negative)
and green (positive)

**Electron density around A1IDQ B 607:**

$2mF_o-DF_c$ (at 0.7 rmsd) in gray
 mF_o-DF_c (at 3 rmsd) in purple (negative)
and green (positive)



6.5 Other polymers [i](#)

There are no such residues in this entry.