



Full wwPDB EM Validation Report ⓘ

Sep 7, 2025 – 07:14 am BST

PDB ID : 9R22 / pdb_00009r22
EMDB ID : EMD-53520
Title : Cryo-EM structure of the light-driven proton pump PsPR in detergent micelle
Authors : Kovalev, K.; Stetsenko, A.; Guskov, A.
Deposited on : 2025-04-29
Resolution : 2.48 Å(reported)

This is a Full wwPDB EM Validation Report for a publicly released PDB entry.

We welcome your comments at validation@mail.wwpdb.org

A user guide is available at

<https://www.wwpdb.org/validation/2017/EMValidationReportHelp>

with specific help available everywhere you see the ⓘ symbol.

The types of validation reports are described at

<http://www.wwpdb.org/validation/2017/FAQs#types>.

The following versions of software and data (see [references ⓘ](#)) were used in the production of this report:

EMDB validation analysis : 0.0.1.dev126
Mogul : 1.8.4, CSD as541be (2020)
MolProbity : **FAILED**
buster-report : 1.1.7 (2018)
Percentile statistics : 20231227.v01 (using entries in the PDB archive December 27th 2023)
MapQ : 1.9.13
Ideal geometry (proteins) : Engh & Huber (2001)
Ideal geometry (DNA, RNA) : Parkinson et al. (1996)
Validation Pipeline (wwPDB-VP) : 2.45.1

1 Overall quality at a glance

The following experimental techniques were used to determine the structure:

ELECTRON MICROSCOPY

The reported resolution of this entry is 2.48 Å.

There are no overall percentile quality scores available for this entry.

MolProbity failed to run properly - the sequence quality summary graphics cannot be shown.

2 Entry composition [i](#)

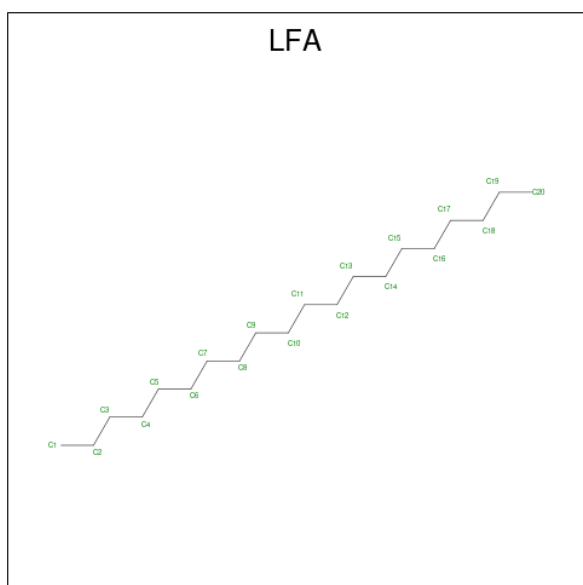
There are 5 unique types of molecules in this entry. The entry contains 9643 atoms, of which 0 are hydrogens and 0 are deuteriums.

In the tables below, the AltConf column contains the number of residues with at least one atom in alternate conformation and the Trace column contains the number of residues modelled with at most 2 atoms.

- Molecule 1 is a protein called microbial rhodopsin.

Mol	Chain	Residues	Atoms					AltConf	Trace
1	A	230	Total	C	N	O	S	1	0
			1779	1197	270	301	11		
1	B	230	Total	C	N	O	S	1	0
			1779	1197	270	301	11		
1	C	230	Total	C	N	O	S	1	0
			1779	1197	270	301	11		
1	D	230	Total	C	N	O	S	1	0
			1779	1197	270	301	11		
1	E	230	Total	C	N	O	S	1	0
			1779	1197	270	301	11		

- Molecule 2 is EICOSANE (CCD ID: LFA) (formula: C₂₀H₄₂).



Mol	Chain	Residues	Atoms		AltConf
2	A	1	Total	C	0
			8	8	
2	A	1	Total	C	0
			14	14	

Continued on next page...

Continued from previous page...

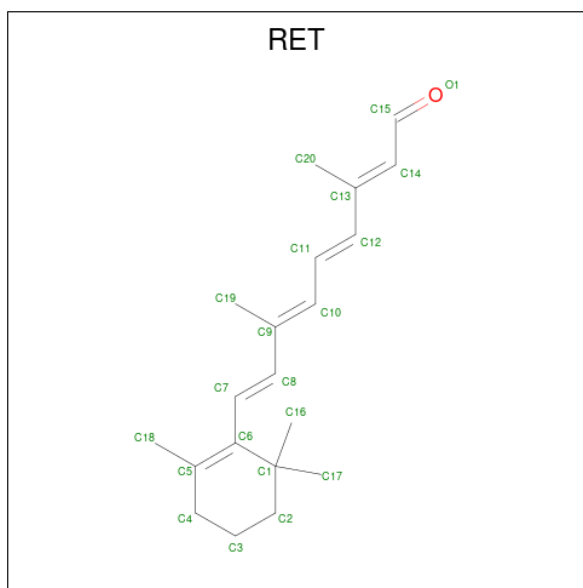
Mol	Chain	Residues	Atoms	AltConf
2	A	1	Total C 10 10	0
2	A	1	Total C 18 18	0
2	A	1	Total C 13 13	0
2	A	1	Total C 5 5	0
2	B	1	Total C 19 19	0
2	B	1	Total C 12 12	0
2	B	1	Total C 20 20	0
2	B	1	Total C 11 11	0
2	B	1	Total C 9 9	0
2	B	1	Total C 5 5	0
2	C	1	Total C 18 18	0
2	C	1	Total C 20 20	0
2	C	1	Total C 10 10	0
2	C	1	Total C 14 14	0
2	C	1	Total C 8 8	0
2	C	1	Total C 13 13	0
2	C	1	Total C 8 8	0
2	C	1	Total C 5 5	0
2	D	1	Total C 18 18	0
2	D	1	Total C 13 13	0
2	D	1	Total C 8 8	0

Continued on next page...

Continued from previous page...

Mol	Chain	Residues	Atoms	AltConf
2	D	1	Total C 20 20	0
2	D	1	Total C 5 5	0
2	E	1	Total C 5 5	0
2	E	1	Total C 18 18	0
2	E	1	Total C 20 20	0
2	E	1	Total C 9 9	0
2	E	1	Total C 12 12	0

- Molecule 3 is RETINAL (CCD ID: RET) (formula: $C_{20}H_{28}O$) (labeled as "Ligand of Interest" by depositor).



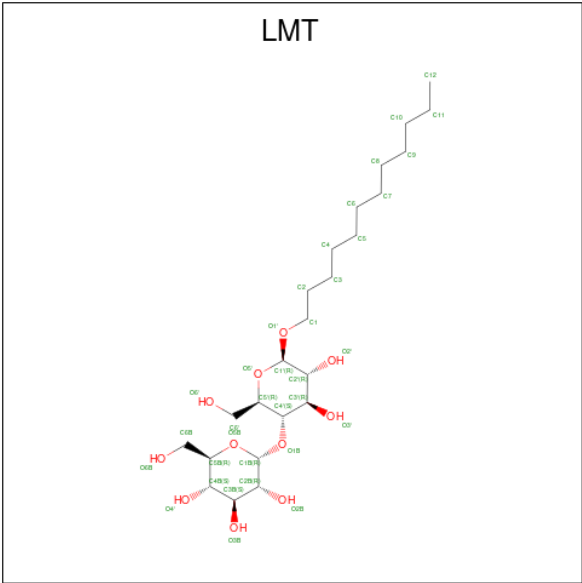
Mol	Chain	Residues	Atoms	AltConf
3	A	1	Total C 20 20	0
3	B	1	Total C 20 20	0
3	C	1	Total C 20 20	0
3	D	1	Total C 20 20	0

Continued on next page...

Continued from previous page...

Mol	Chain	Residues	Atoms	AltConf
3	E	1	Total C 20 20	0

- Molecule 4 is DODECYL-BETA-D-MALTOSIDE (CCD ID: LMT) (formula: C₂₄H₄₆O₁₁).



Mol	Chain	Residues	Atoms	AltConf
4	A	1	Total C O 35 24 11	0
4	B	1	Total C O 35 24 11	0
4	D	1	Total C O 35 24 11	0
4	D	1	Total C O 35 24 11	0
4	E	1	Total C O 35 24 11	0

- Molecule 5 is water.

Mol	Chain	Residues	Atoms	AltConf
5	A	21	Total O 21 21	0
5	B	21	Total O 21 21	0
5	C	20	Total O 20 20	0

Continued on next page...

Continued from previous page...

Mol	Chain	Residues	Atoms		AltConf
5	D	22	Total 22	O 22	0
5	E	21	Total 21	O 21	0

MolProbity failed to run properly - this section is therefore empty.

3 Experimental information

Property	Value	Source
EM reconstruction method	SINGLE PARTICLE	Depositor
Imposed symmetry	POINT, Not provided	
Number of particles used	497291	Depositor
Resolution determination method	FSC 0.143 CUT-OFF	Depositor
CTF correction method	PHASE FLIPPING AND AMPLITUDE CORRECTION	Depositor
Microscope	TFS KRIOS	Depositor
Voltage (kV)	300	Depositor
Electron dose ($e^-/\text{\AA}^2$)	50	Depositor
Minimum defocus (nm)	500	Depositor
Maximum defocus (nm)	2000	Depositor
Magnification	Not provided	
Image detector	GATAN K3 BIOQUANTUM (6k x 4k)	Depositor
Maximum map value	0.847	Depositor
Minimum map value	-0.648	Depositor
Average map value	0.000	Depositor
Map value standard deviation	0.024	Depositor
Recommended contour level	0.137	Depositor
Map size (Å)	234.08, 234.08, 234.08	wwPDB
Map dimensions	280, 280, 280	wwPDB
Map angles (°)	90.0, 90.0, 90.0	wwPDB
Pixel spacing (Å)	0.836, 0.836, 0.836	Depositor

4 Model quality [i](#)

4.1 Standard geometry [i](#)

MolProbity failed to run properly - this section is therefore empty.

4.2 Too-close contacts [i](#)

MolProbity failed to run properly - this section is therefore empty.

4.3 Torsion angles [i](#)

4.3.1 Protein backbone [i](#)

MolProbity failed to run properly - this section is therefore empty.

4.3.2 Protein sidechains [i](#)

MolProbity failed to run properly - this section is therefore empty.

4.3.3 RNA [i](#)

MolProbity failed to run properly - this section is therefore empty.

4.4 Non-standard residues in protein, DNA, RNA chains [i](#)

There are no non-standard protein/DNA/RNA residues in this entry.

4.5 Carbohydrates [i](#)

There are no oligosaccharides in this entry.

4.6 Ligand geometry [i](#)

40 ligands are modelled in this entry.

In the following table, the Counts columns list the number of bonds (or angles) for which Mogul statistics could be retrieved, the number of bonds (or angles) that are observed in the model and the number of bonds (or angles) that are defined in the Chemical Component Dictionary. The Link column lists molecule types, if any, to which the group is linked. The Z score for a bond

length (or angle) is the number of standard deviations the observed value is removed from the expected value. A bond length (or angle) with $|Z| > 2$ is considered an outlier worth inspection. RMSZ is the root-mean-square of all Z scores of the bond lengths (or angles).

Mol	Type	Chain	Res	Link	Bond lengths			Bond angles		
					Counts	RMSZ	$\# Z > 2$	Counts	RMSZ	$\# Z > 2$
2	LFA	D	301	-	17,17,19	0.34	0	16,16,18	0.94	0
2	LFA	C	304	-	13,13,19	0.41	0	12,12,18	0.67	0
2	LFA	E	306	-	11,11,19	0.42	0	10,10,18	0.64	0
2	LFA	D	304	-	19,19,19	0.44	0	18,18,18	0.79	0
4	LMT	D	308	-	36,36,36	0.59	0	47,47,47	0.95	3 (6%)
3	RET	A	306	1	20,20,21	1.42	5 (25%)	27,27,28	1.53	3 (11%)
2	LFA	C	303	-	9,9,19	0.35	0	8,8,18	0.81	0
2	LFA	D	302	-	12,12,19	0.40	0	11,11,18	0.56	0
2	LFA	D	303	-	7,7,19	0.45	0	6,6,18	0.69	0
2	LFA	E	305	-	8,8,19	0.40	0	7,7,18	0.58	0
2	LFA	A	302	-	13,13,19	0.60	0	12,12,18	0.58	0
2	LFA	B	304	-	10,10,19	0.52	0	9,9,18	0.45	0
2	LFA	A	303	-	9,9,19	0.41	0	8,8,18	0.56	0
4	LMT	B	308	-	36,36,36	0.56	0	47,47,47	1.15	4 (8%)
2	LFA	C	307	-	7,7,19	0.36	0	6,6,18	0.96	0
2	LFA	B	302	-	11,11,19	0.48	0	10,10,18	0.54	0
3	RET	E	307	1	20,20,21	1.41	5 (25%)	27,27,28	1.53	3 (11%)
2	LFA	E	304	-	19,19,19	0.50	0	18,18,18	0.97	1 (5%)
2	LFA	B	303	-	19,19,19	0.42	0	18,18,18	0.46	0
2	LFA	E	301	-	4,4,19	0.46	0	3,3,18	0.42	0
2	LFA	C	305	-	7,7,19	0.50	0	6,6,18	0.47	0
2	LFA	B	306	-	4,4,19	0.51	0	3,3,18	0.32	0
2	LFA	E	303	-	17,17,19	0.33	0	16,16,18	0.70	0
2	LFA	A	308	-	4,4,19	0.43	0	3,3,18	0.41	0
3	RET	C	309	1	20,20,21	1.41	5 (25%)	27,27,28	1.52	3 (11%)
2	LFA	C	301	-	17,17,19	0.35	0	16,16,18	0.86	0
4	LMT	D	305	-	36,36,36	0.50	0	47,47,47	1.00	3 (6%)
4	LMT	E	302	-	36,36,36	0.49	0	47,47,47	1.05	3 (6%)
2	LFA	A	301	-	7,7,19	0.43	0	6,6,18	0.61	0
3	RET	D	307	1	20,20,21	1.40	4 (20%)	27,27,28	1.52	3 (11%)
3	RET	B	307	1	20,20,21	1.41	5 (25%)	27,27,28	1.52	3 (11%)
2	LFA	B	301	-	18,18,19	0.32	0	17,17,18	0.89	0
4	LMT	A	307	-	36,36,36	0.42	0	47,47,47	1.04	4 (8%)
2	LFA	A	305	-	12,12,19	0.36	0	11,11,18	0.78	0
2	LFA	D	306	-	4,4,19	0.46	0	3,3,18	0.45	0
2	LFA	C	306	-	12,12,19	0.37	0	11,11,18	0.71	0
2	LFA	C	302	-	19,19,19	0.34	0	18,18,18	1.07	1 (5%)

Mol	Type	Chain	Res	Link	Bond lengths			Bond angles		
					Counts	RMSZ	# Z > 2	Counts	RMSZ	# Z > 2
2	LFA	B	305	-	8,8,19	0.40	0	7,7,18	0.60	0
2	LFA	A	304	-	17,17,19	0.35	0	16,16,18	1.33	3 (18%)
2	LFA	C	308	-	4,4,19	0.52	0	3,3,18	0.31	0

In the following table, the Chirals column lists the number of chiral outliers, the number of chiral centers analysed, the number of these observed in the model and the number defined in the Chemical Component Dictionary. Similar counts are reported in the Torsion and Rings columns. '-' means no outliers of that kind were identified.

Mol	Type	Chain	Res	Link	Chirals	Torsions	Rings
2	LFA	D	301	-	-	4/15/15/17	-
2	LFA	C	304	-	-	2/11/11/17	-
2	LFA	E	306	-	-	3/9/9/17	-
2	LFA	D	304	-	-	5/17/17/17	-
4	LMT	D	308	-	-	11/21/61/61	0/2/2/2
3	RET	A	306	1	-	0/13/30/31	0/1/1/1
2	LFA	C	303	-	-	1/7/7/17	-
2	LFA	D	302	-	-	0/10/10/17	-
2	LFA	D	303	-	-	0/5/5/17	-
2	LFA	E	305	-	-	1/6/6/17	-
2	LFA	A	302	-	-	6/11/11/17	-
2	LFA	B	304	-	-	3/8/8/17	-
2	LFA	A	303	-	-	2/7/7/17	-
4	LMT	B	308	-	-	12/21/61/61	0/2/2/2
2	LFA	C	307	-	-	0/5/5/17	-
2	LFA	B	302	-	-	1/9/9/17	-
3	RET	E	307	1	-	0/13/30/31	0/1/1/1
2	LFA	E	304	-	-	7/17/17/17	-
2	LFA	B	303	-	-	4/17/17/17	-
2	LFA	E	301	-	-	0/2/2/17	-
2	LFA	C	305	-	-	1/5/5/17	-
2	LFA	B	306	-	-	0/2/2/17	-
2	LFA	E	303	-	-	3/15/15/17	-
2	LFA	A	308	-	-	0/2/2/17	-
3	RET	C	309	1	-	0/13/30/31	0/1/1/1
2	LFA	C	301	-	-	3/15/15/17	-
4	LMT	D	305	-	-	12/21/61/61	0/2/2/2
4	LMT	E	302	-	-	11/21/61/61	0/2/2/2
2	LFA	A	301	-	-	2/5/5/17	-

Continued on next page...

Continued from previous page...

Mol	Type	Chain	Res	Link	Chirals	Torsions	Rings
3	RET	D	307	1	-	0/13/30/31	0/1/1/1
3	RET	B	307	1	-	0/13/30/31	0/1/1/1
2	LFA	B	301	-	-	8/16/16/17	-
4	LMT	A	307	-	-	10/21/61/61	0/2/2/2
2	LFA	A	305	-	-	3/10/10/17	-
2	LFA	D	306	-	-	0/2/2/17	-
2	LFA	C	306	-	-	3/10/10/17	-
2	LFA	C	302	-	-	4/17/17/17	-
2	LFA	B	305	-	-	3/6/6/17	-
2	LFA	A	304	-	-	2/15/15/17	-
2	LFA	C	308	-	-	1/2/2/17	-

All (24) bond length outliers are listed below:

Mol	Chain	Res	Type	Atoms	Z	Observed(Å)	Ideal(Å)
3	C	309	RET	C11-C10	-3.22	1.33	1.43
3	A	306	RET	C11-C10	-3.22	1.33	1.43
3	B	307	RET	C11-C10	-3.21	1.33	1.43
3	E	307	RET	C11-C10	-3.21	1.33	1.43
3	B	307	RET	C2-C3	-3.19	1.44	1.52
3	D	307	RET	C11-C10	-3.19	1.33	1.43
3	D	307	RET	C2-C3	-3.17	1.44	1.52
3	A	306	RET	C2-C3	-3.16	1.44	1.52
3	C	309	RET	C2-C3	-3.15	1.44	1.52
3	E	307	RET	C2-C3	-3.15	1.44	1.52
3	A	306	RET	C11-C12	2.33	1.40	1.34
3	D	307	RET	C11-C12	2.32	1.40	1.34
3	E	307	RET	C11-C12	2.31	1.40	1.34
3	B	307	RET	C11-C12	2.31	1.40	1.34
3	C	309	RET	C11-C12	2.29	1.40	1.34
3	E	307	RET	C10-C9	2.14	1.38	1.35
3	C	309	RET	C10-C9	2.14	1.38	1.35
3	A	306	RET	C10-C9	2.14	1.38	1.35
3	B	307	RET	C10-C9	2.12	1.38	1.35
3	D	307	RET	C12-C13	-2.12	1.41	1.45
3	C	309	RET	C12-C13	-2.07	1.41	1.45
3	B	307	RET	C12-C13	-2.06	1.41	1.45
3	A	306	RET	C12-C13	-2.06	1.41	1.45
3	E	307	RET	C12-C13	-2.05	1.41	1.45

All (37) bond angle outliers are listed below:

Mol	Chain	Res	Type	Atoms	Z	Observed(°)	Ideal(°)
4	D	305	LMT	C1B-O1B-C4'	4.29	128.58	117.96
3	A	306	RET	C19-C9-C10	-4.25	116.96	122.92
3	C	309	RET	C19-C9-C10	-4.22	117.00	122.92
3	D	307	RET	C19-C9-C10	-4.22	117.00	122.92
3	B	307	RET	C19-C9-C10	-4.22	117.01	122.92
3	E	307	RET	C19-C9-C10	-4.21	117.02	122.92
4	B	308	LMT	C1B-O1B-C4'	4.06	128.02	117.96
4	E	302	LMT	C1B-O1B-C4'	4.01	127.88	117.96
4	A	307	LMT	C1B-O1B-C4'	3.68	127.06	117.96
3	A	306	RET	C19-C9-C8	3.56	123.69	118.08
3	B	307	RET	C19-C9-C8	3.53	123.65	118.08
3	E	307	RET	C19-C9-C8	3.52	123.62	118.08
3	C	309	RET	C19-C9-C8	3.51	123.61	118.08
3	D	307	RET	C19-C9-C8	3.43	123.48	118.08
4	E	302	LMT	C1'-O5'-C5'	-2.87	108.06	113.69
4	E	302	LMT	O1B-C4'-C3'	2.86	114.88	107.28
4	D	305	LMT	O1B-C4'-C3'	2.81	114.76	107.28
4	A	307	LMT	O1B-C4'-C3'	2.70	114.45	107.28
4	B	308	LMT	O6'-C6'-C5'	2.63	120.32	111.29
3	C	309	RET	C1-C6-C7	2.63	123.21	115.78
3	D	307	RET	C1-C6-C7	2.63	123.21	115.78
4	B	308	LMT	O1B-C4'-C3'	2.63	114.27	107.28
4	D	308	LMT	O6'-C6'-C5'	2.62	120.29	111.29
3	A	306	RET	C1-C6-C7	2.62	123.19	115.78
3	E	307	RET	C1-C6-C7	2.61	123.18	115.78
3	B	307	RET	C1-C6-C7	2.61	123.15	115.78
4	A	307	LMT	C1'-O5'-C5'	-2.59	108.60	113.69
2	A	304	LFA	C8-C7-C6	-2.53	101.60	114.42
4	B	308	LMT	O1B-C1B-O5B	2.50	117.65	110.67
2	A	304	LFA	C16-C15-C14	-2.43	102.06	114.42
2	A	304	LFA	C5-C4-C3	-2.41	102.17	114.42
4	D	305	LMT	C1'-O5'-C5'	-2.37	109.03	113.69
4	D	308	LMT	C1B-O5B-C5B	2.32	118.24	113.69
4	A	307	LMT	O1'-C1-C2	-2.32	101.45	109.56
2	E	304	LFA	C10-C9-C8	-2.11	103.72	114.42
2	C	302	LFA	C9-C8-C7	-2.06	103.98	114.42
4	D	308	LMT	C1'-C2'-C3'	2.05	114.27	110.00

There are no chirality outliers.

All (128) torsion outliers are listed below:

Mol	Chain	Res	Type	Atoms
4	A	307	LMT	C2'-C1'-O1'-C1

Continued on next page...

Continued from previous page...

Mol	Chain	Res	Type	Atoms
4	A	307	LMT	O5'-C1'-O1'-C1
4	B	308	LMT	C2'-C1'-O1'-C1
4	B	308	LMT	O5'-C1'-O1'-C1
4	D	308	LMT	C2'-C1'-O1'-C1
4	D	308	LMT	O5'-C1'-O1'-C1
4	E	302	LMT	C3'-C4'-O1B-C1B
4	D	305	LMT	C3'-C4'-O1B-C1B
4	A	307	LMT	C3'-C4'-O1B-C1B
4	B	308	LMT	C3'-C4'-O1B-C1B
4	D	308	LMT	O5B-C1B-O1B-C4'
4	B	308	LMT	O5'-C5'-C6'-O6'
4	E	302	LMT	O5'-C5'-C6'-O6'
4	B	308	LMT	C4'-C5'-C6'-O6'
4	D	305	LMT	O5'-C5'-C6'-O6'
4	D	305	LMT	O5'-C1'-O1'-C1
4	B	308	LMT	O5B-C5B-C6B-O6B
4	A	307	LMT	O5'-C5'-C6'-O6'
4	D	305	LMT	C4'-C5'-C6'-O6'
4	B	308	LMT	C4B-C5B-C6B-O6B
4	E	302	LMT	C4'-C5'-C6'-O6'
4	D	305	LMT	C2'-C1'-O1'-C1
4	E	302	LMT	C2'-C1'-O1'-C1
4	D	308	LMT	C2-C3-C4-C5
4	D	308	LMT	C5'-C4'-O1B-C1B
4	A	307	LMT	C4'-C5'-C6'-O6'
4	A	307	LMT	O5B-C5B-C6B-O6B
2	C	301	LFA	C5-C6-C7-C8
4	D	305	LMT	O1'-C1-C2-C3
4	D	308	LMT	C3'-C4'-O1B-C1B
2	C	304	LFA	C5-C6-C7-C8
4	D	308	LMT	O5B-C5B-C6B-O6B
2	E	304	LFA	C11-C12-C13-C14
2	C	301	LFA	C9-C10-C11-C12
2	C	301	LFA	C10-C11-C12-C13
2	D	301	LFA	C4-C5-C6-C7
2	B	303	LFA	C2-C3-C4-C5
2	E	306	LFA	C7-C8-C9-C10
2	A	303	LFA	C15-C16-C17-C18
2	B	303	LFA	C9-C10-C11-C12
2	E	304	LFA	C15-C16-C17-C18
4	A	307	LMT	C1-C2-C3-C4
4	E	302	LMT	C3-C4-C5-C6

Continued on next page...

Continued from previous page...

Mol	Chain	Res	Type	Atoms
4	E	302	LMT	C1-C2-C3-C4
2	E	304	LFA	C13-C14-C15-C16
4	E	302	LMT	C4-C5-C6-C7
4	A	307	LMT	C7-C8-C9-C10
4	D	308	LMT	C4-C5-C6-C7
2	D	304	LFA	C14-C15-C16-C17
2	A	305	LFA	C6-C7-C8-C9
2	B	304	LFA	C7-C8-C9-C10
4	B	308	LMT	O5B-C1B-O1B-C4'
2	C	305	LFA	C16-C17-C18-C19
4	D	305	LMT	C4-C5-C6-C7
2	E	304	LFA	C10-C11-C12-C13
2	A	302	LFA	C3-C4-C5-C6
2	C	304	LFA	C11-C10-C9-C8
4	E	302	LMT	O5'-C1'-O1'-C1
2	E	306	LFA	C9-C10-C11-C12
2	A	304	LFA	C11-C10-C9-C8
2	A	303	LFA	C17-C18-C19-C20
2	E	306	LFA	C5-C6-C7-C8
2	D	301	LFA	C5-C6-C7-C8
2	B	305	LFA	C2-C3-C4-C5
2	A	302	LFA	C4-C5-C6-C7
2	C	302	LFA	C12-C13-C14-C15
2	B	301	LFA	C16-C17-C18-C19
2	D	304	LFA	C2-C3-C4-C5
4	D	308	LMT	C9-C10-C11-C12
2	A	302	LFA	C9-C10-C11-C12
2	B	301	LFA	C2-C3-C4-C5
2	D	301	LFA	C6-C7-C8-C9
2	B	301	LFA	C15-C16-C17-C18
2	B	301	LFA	C14-C15-C16-C17
4	E	302	LMT	O1'-C1-C2-C3
4	D	305	LMT	C6-C7-C8-C9
2	C	306	LFA	C7-C8-C9-C10
2	E	304	LFA	C14-C15-C16-C17
2	A	302	LFA	C1-C2-C3-C4
2	C	302	LFA	C9-C10-C11-C12
2	D	301	LFA	C12-C13-C14-C15
4	D	305	LMT	C9-C10-C11-C12
2	C	306	LFA	C2-C3-C4-C5
2	B	303	LFA	C11-C12-C13-C14
2	D	304	LFA	C11-C10-C9-C8

Continued on next page...

Continued from previous page...

Mol	Chain	Res	Type	Atoms
2	B	305	LFA	C7-C8-C9-C10
2	A	301	LFA	C2-C3-C4-C5
2	E	303	LFA	C12-C13-C14-C15
2	C	306	LFA	C11-C10-C9-C8
4	D	305	LMT	C3-C4-C5-C6
2	A	302	LFA	C10-C11-C12-C13
2	B	301	LFA	C10-C11-C12-C13
2	D	304	LFA	C11-C12-C13-C14
4	D	305	LMT	C7-C8-C9-C10
4	E	302	LMT	C11-C10-C9-C8
2	B	305	LFA	C4-C5-C6-C7
2	A	302	LFA	C11-C10-C9-C8
2	E	303	LFA	C1-C2-C3-C4
2	B	301	LFA	C4-C5-C6-C7
4	B	308	LMT	C7-C8-C9-C10
2	A	304	LFA	C2-C3-C4-C5
2	C	303	LFA	C5-C6-C7-C8
4	A	307	LMT	C2-C3-C4-C5
2	B	302	LFA	C12-C13-C14-C15
2	E	303	LFA	C5-C6-C7-C8
4	E	302	LMT	C5-C6-C7-C8
4	D	305	LMT	C1-C2-C3-C4
2	B	301	LFA	C13-C14-C15-C16
2	D	304	LFA	C1-C2-C3-C4
2	E	305	LFA	C6-C7-C8-C9
2	A	305	LFA	C4-C5-C6-C7
4	B	308	LMT	C2B-C1B-O1B-C4'
4	D	308	LMT	C4'-C5'-C6'-O6'
4	A	307	LMT	C4B-C5B-C6B-O6B
2	E	304	LFA	C12-C13-C14-C15
2	E	304	LFA	C1-C2-C3-C4
2	B	301	LFA	C5-C6-C7-C8
2	C	302	LFA	C16-C17-C18-C19
2	B	303	LFA	C13-C14-C15-C16
2	B	304	LFA	C4-C5-C6-C7
4	B	308	LMT	C2-C3-C4-C5
2	C	302	LFA	C11-C12-C13-C14
4	D	308	LMT	C6-C7-C8-C9
4	B	308	LMT	C1-C2-C3-C4
2	A	301	LFA	C3-C4-C5-C6
2	A	305	LFA	C2-C3-C4-C5
2	B	304	LFA	C3-C4-C5-C6

Continued on next page...

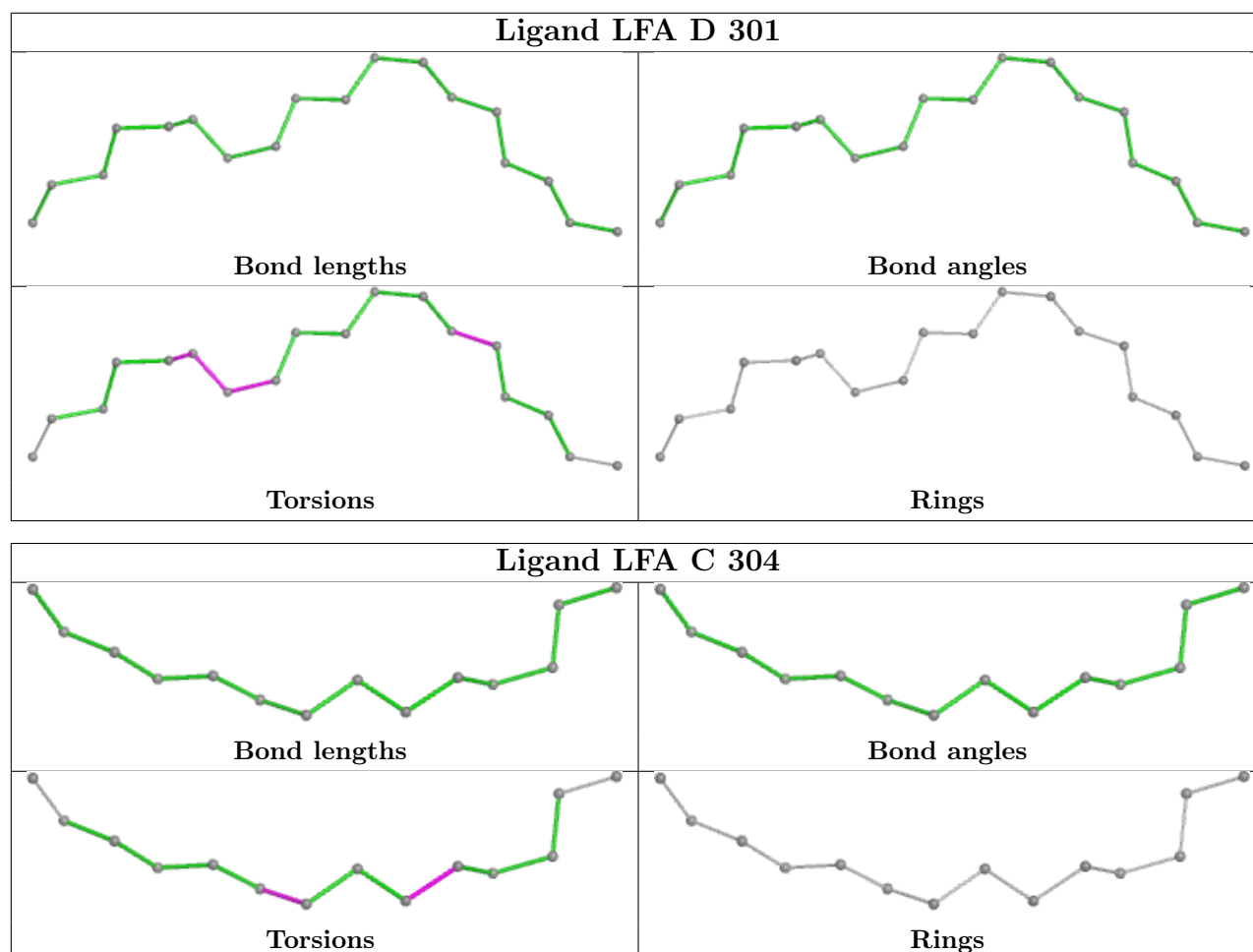
Continued from previous page...

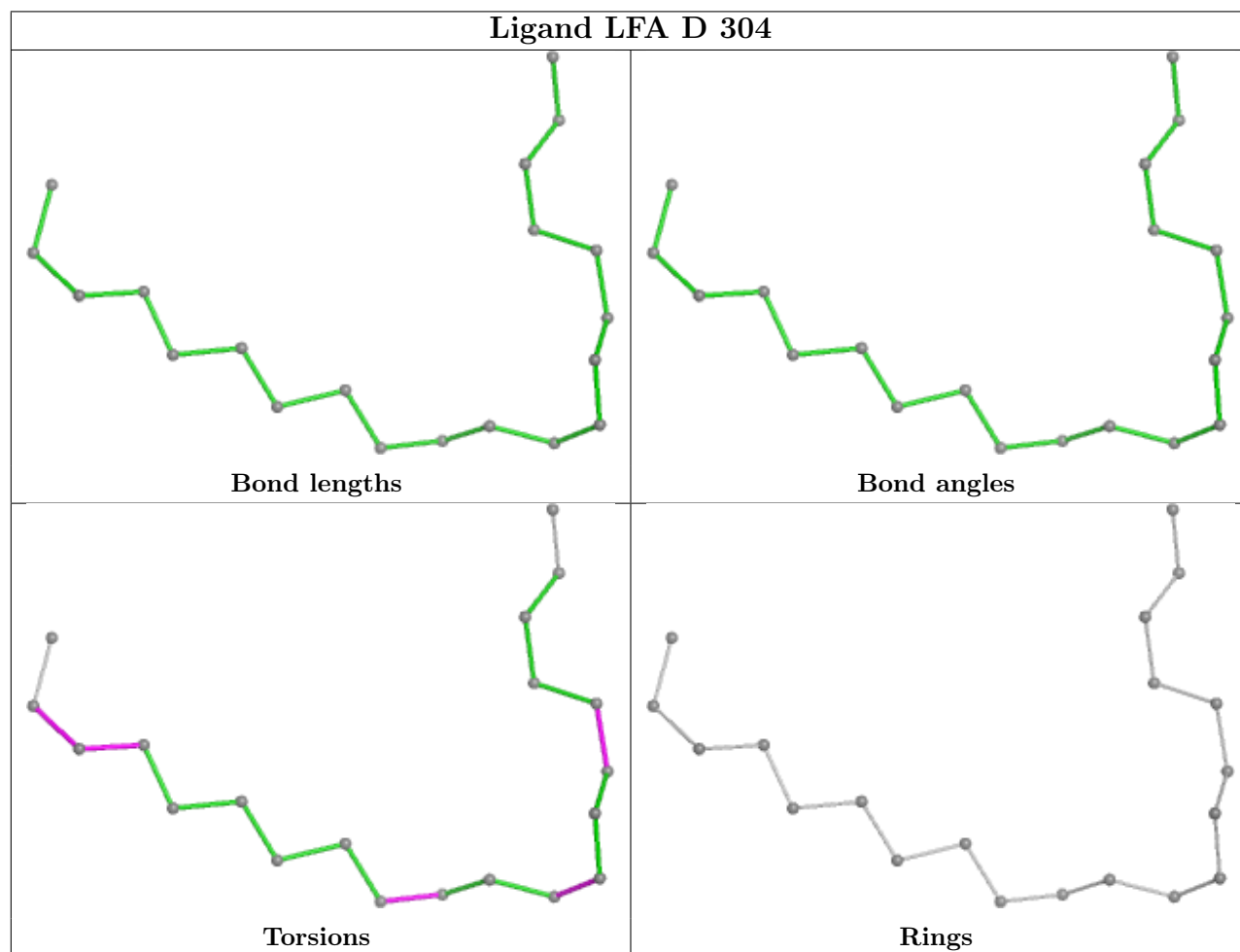
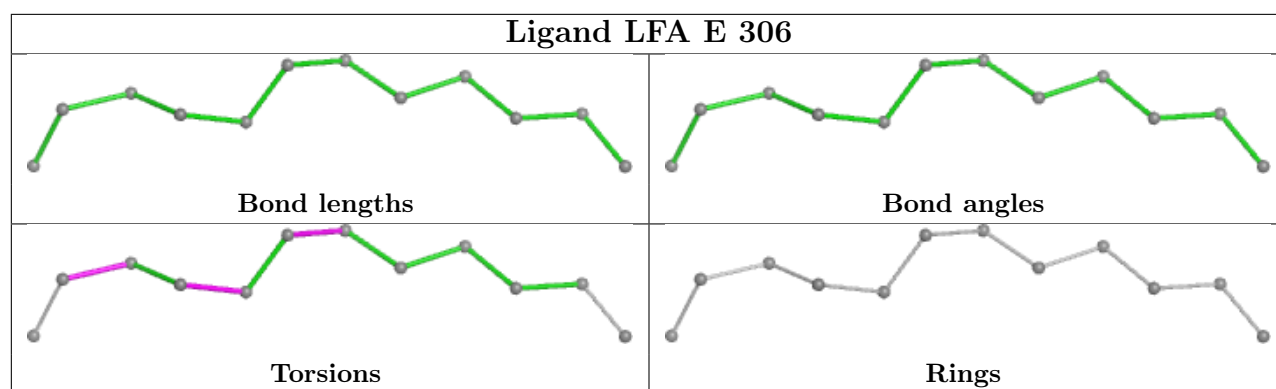
Mol	Chain	Res	Type	Atoms
2	C	308	LFA	C16-C17-C18-C19

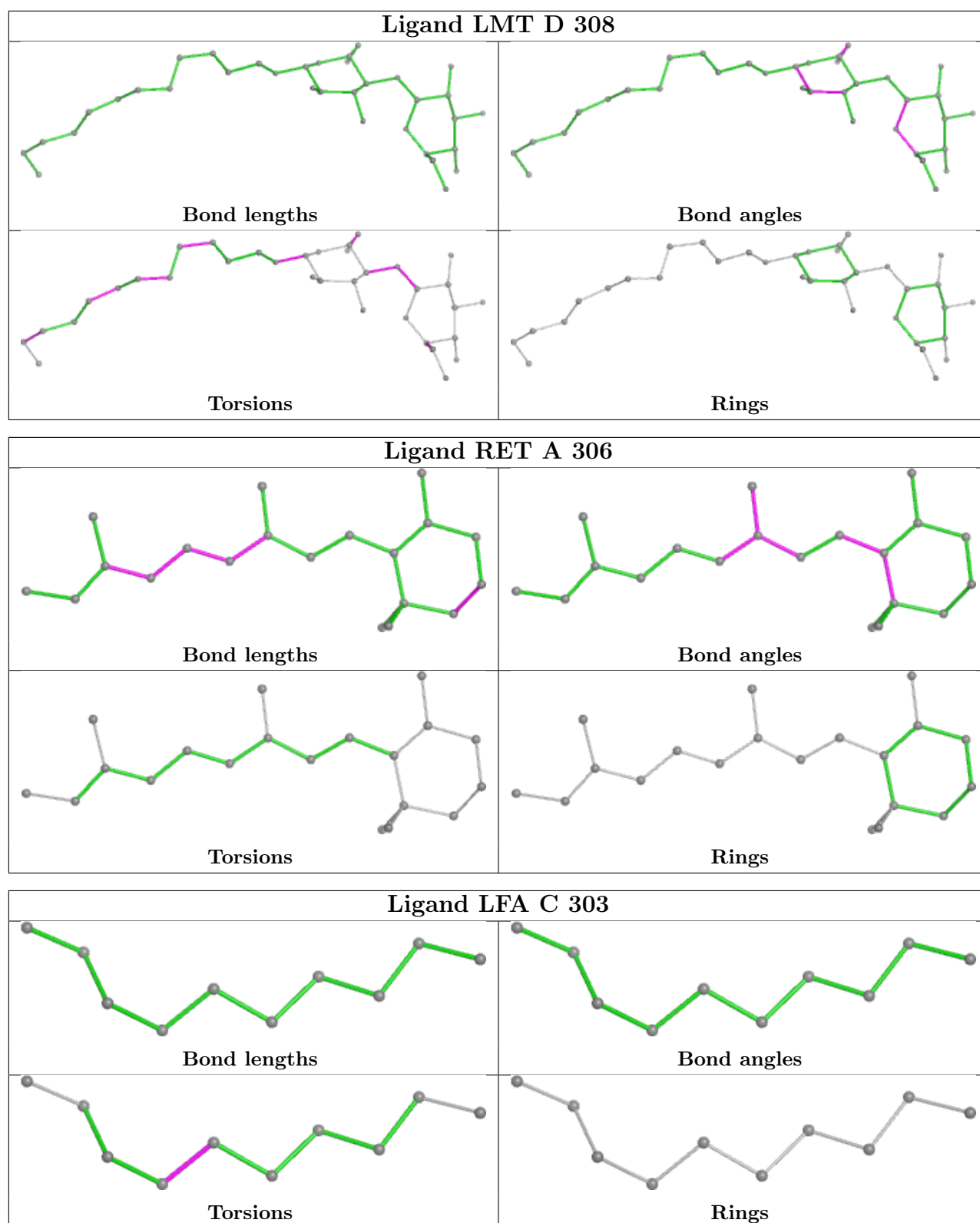
There are no ring outliers.

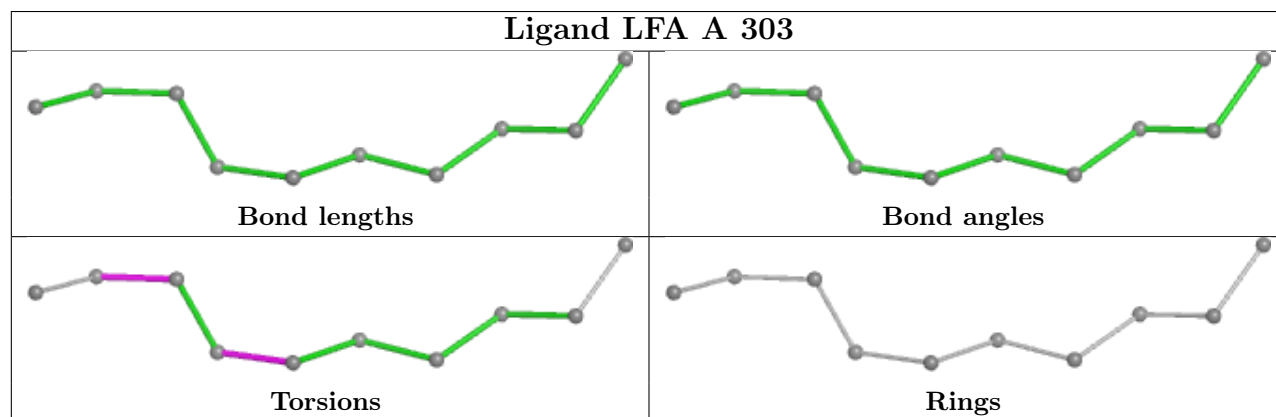
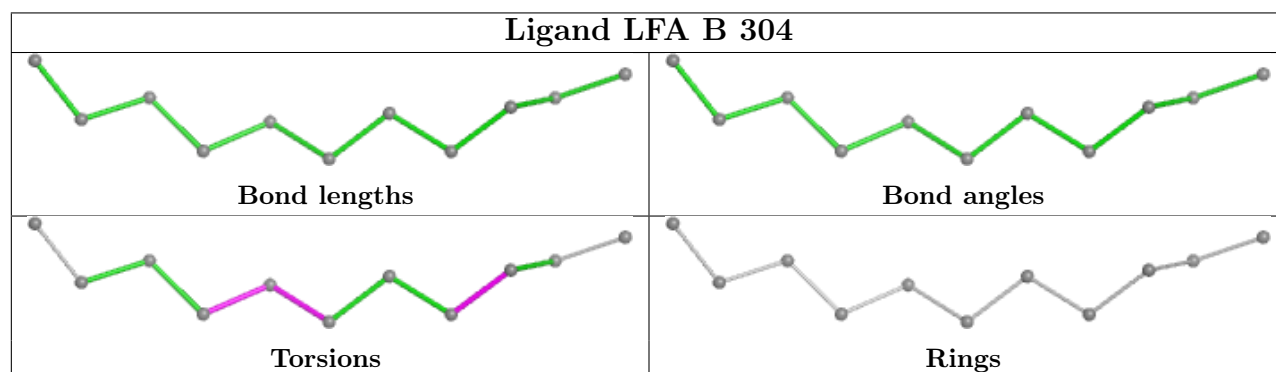
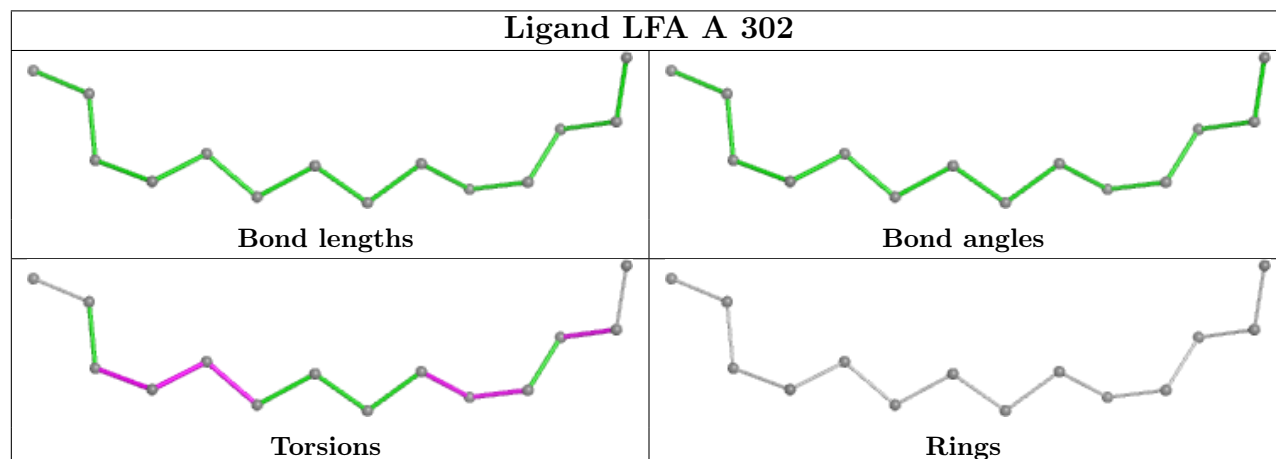
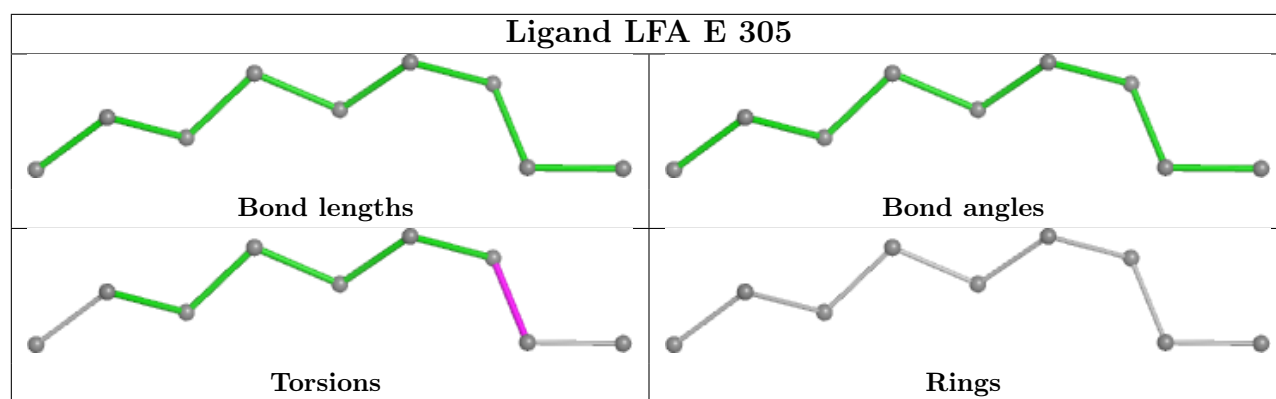
No monomer is involved in short contacts.

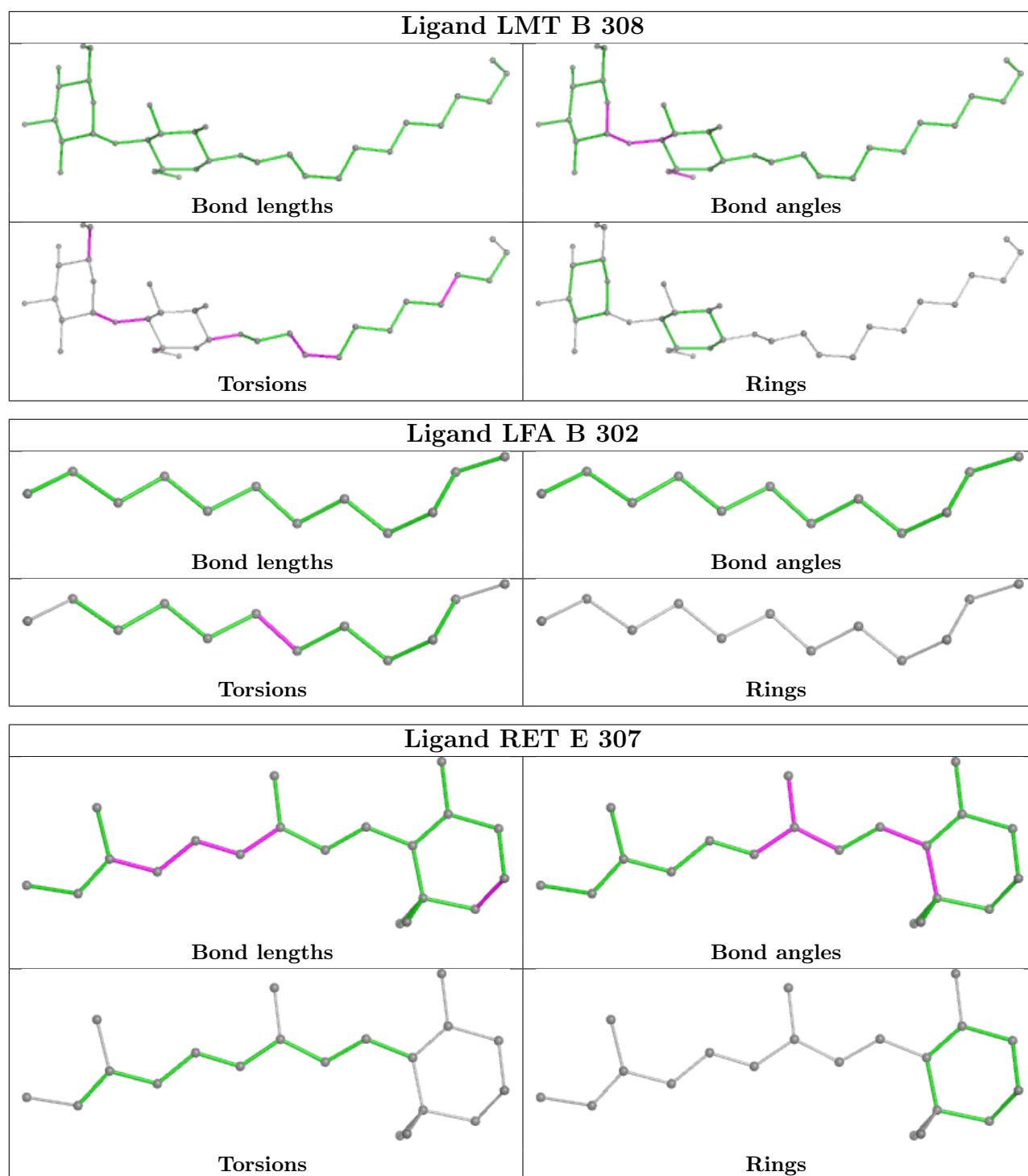
The following is a two-dimensional graphical depiction of Mogul quality analysis of bond lengths, bond angles, torsion angles, and ring geometry for all instances of the Ligand of Interest. In addition, ligands with molecular weight > 250 and outliers as shown on the validation Tables will also be included. For torsion angles, if less than 5% of the Mogul distribution of torsion angles is within 10 degrees of the torsion angle in question, then that torsion angle is considered an outlier. Any bond that is central to one or more torsion angles identified as an outlier by Mogul will be highlighted in the graph. For rings, the root-mean-square deviation (RMSD) between the ring in question and similar rings identified by Mogul is calculated over all ring torsion angles. If the average RMSD is greater than 60 degrees and the minimal RMSD between the ring in question and any Mogul-identified rings is also greater than 60 degrees, then that ring is considered an outlier. The outliers are highlighted in purple. The color gray indicates Mogul did not find sufficient equivalents in the CSD to analyse the geometry.

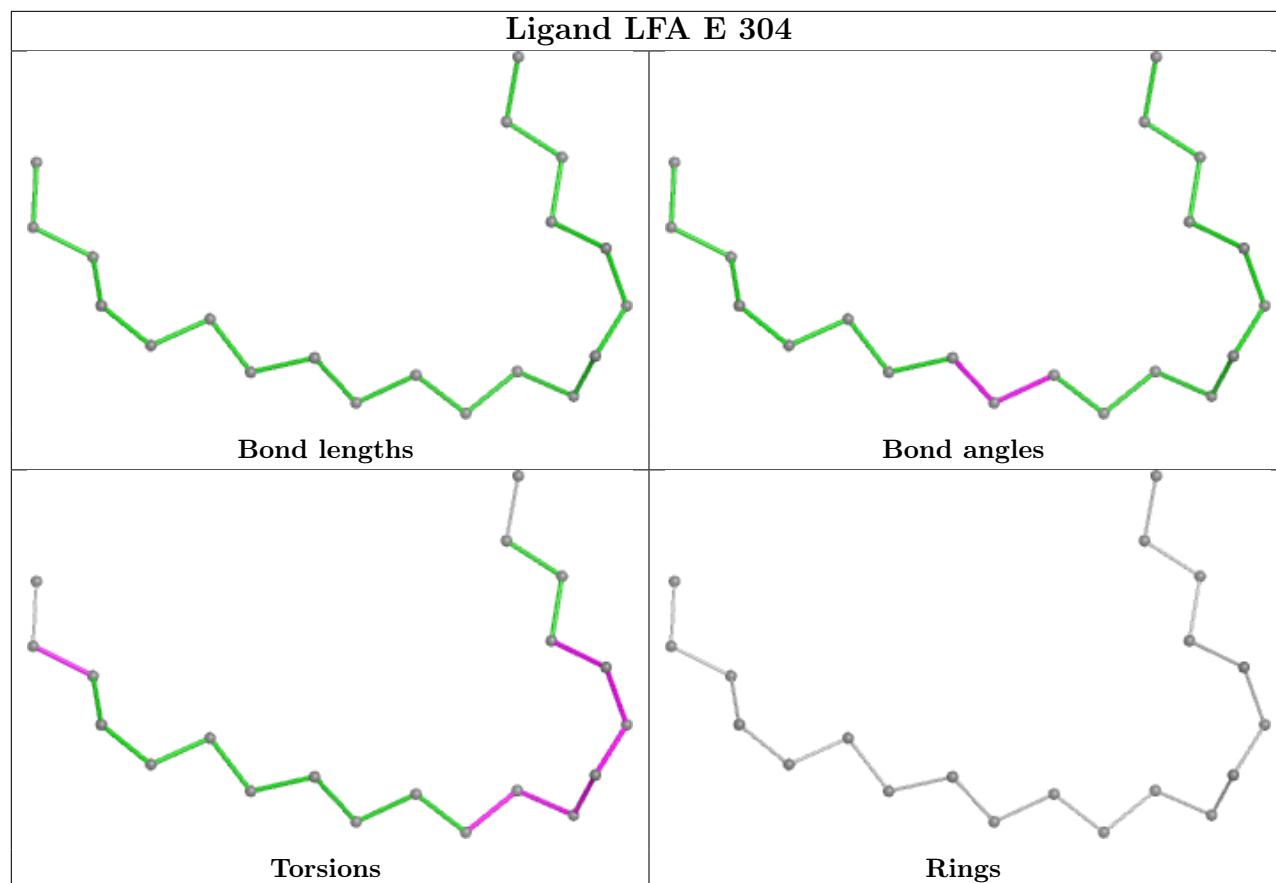


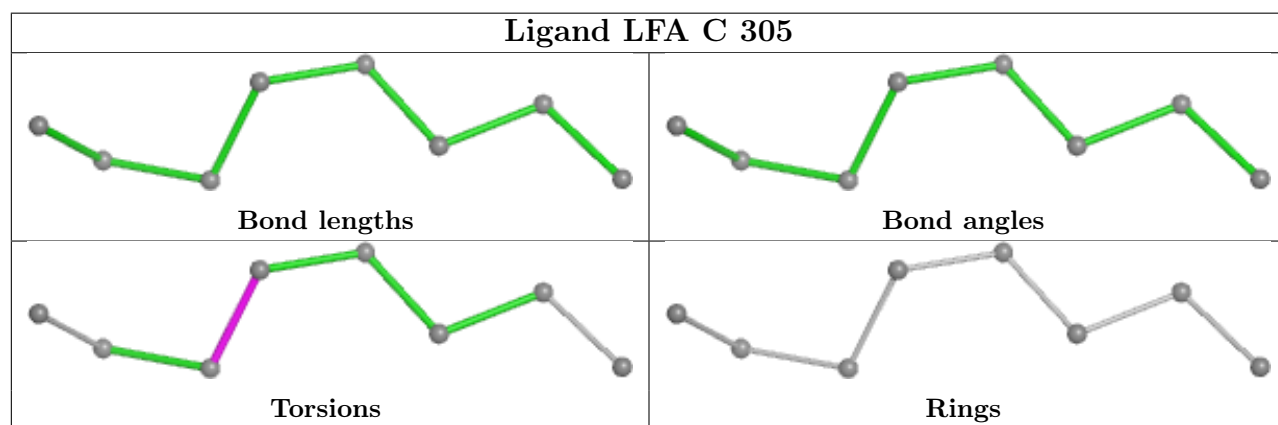
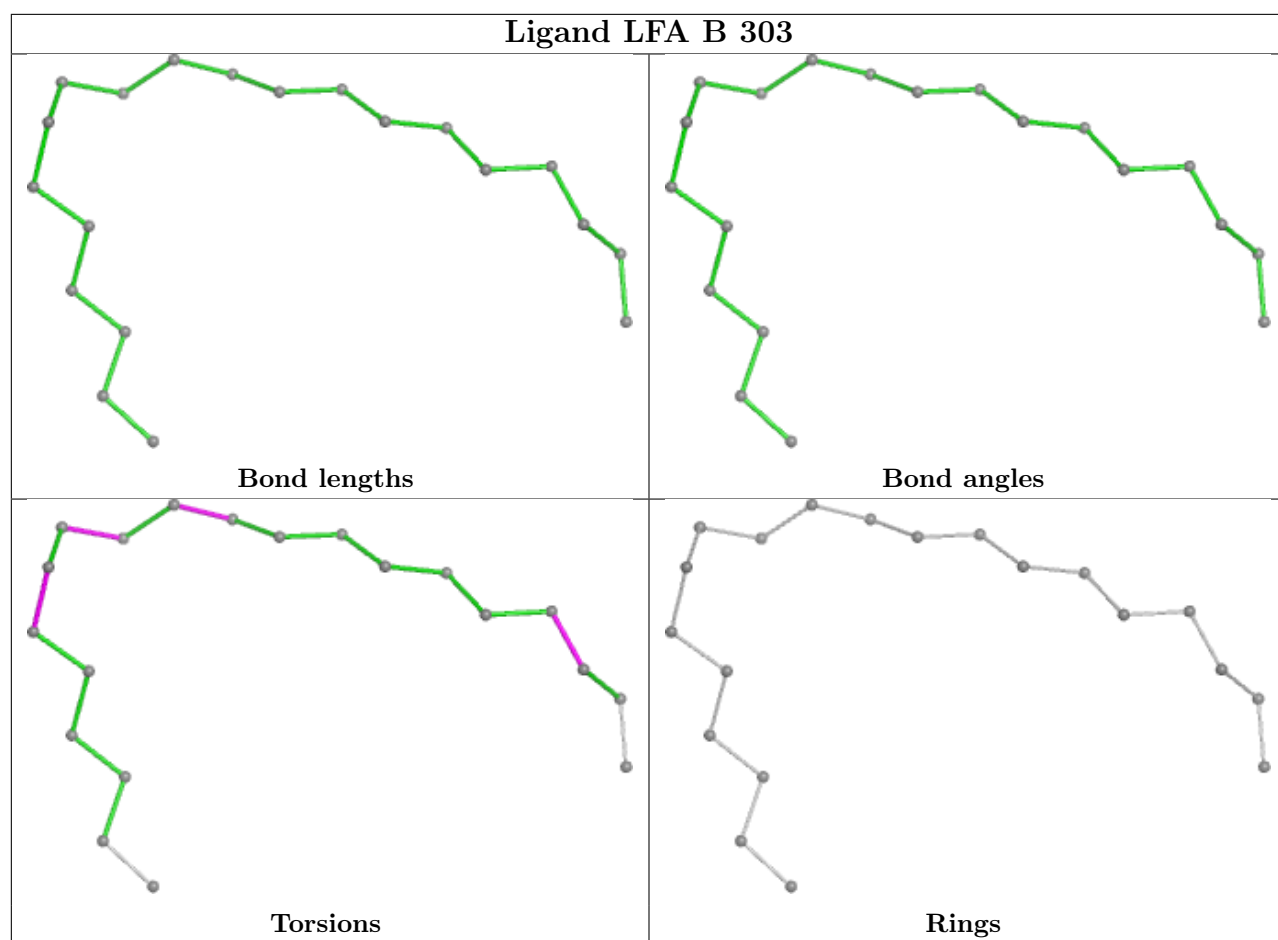


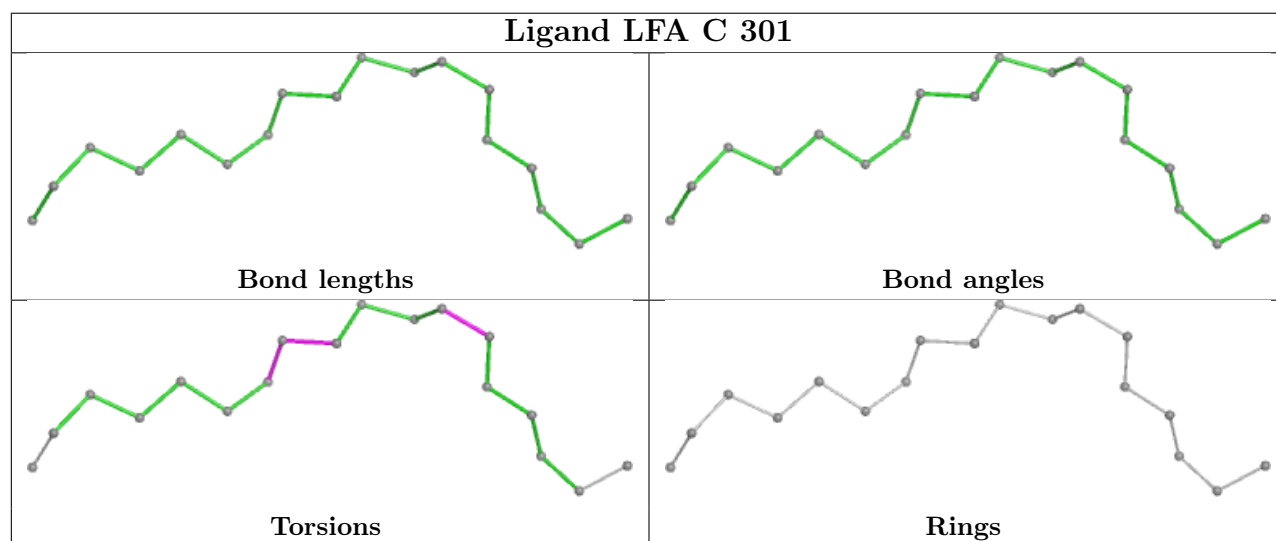
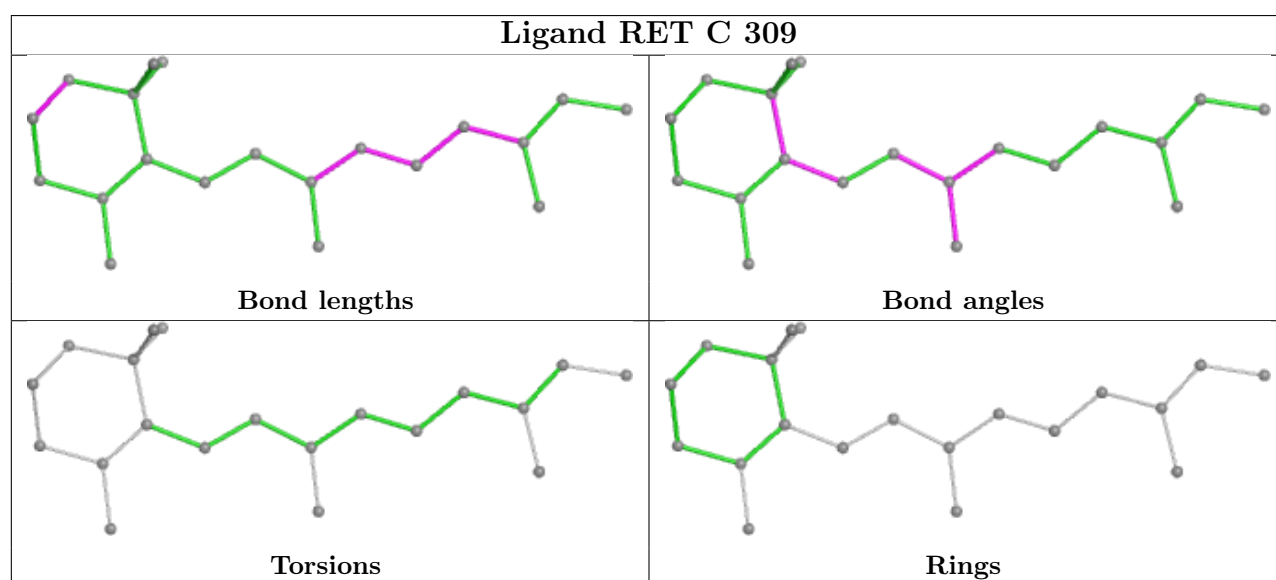
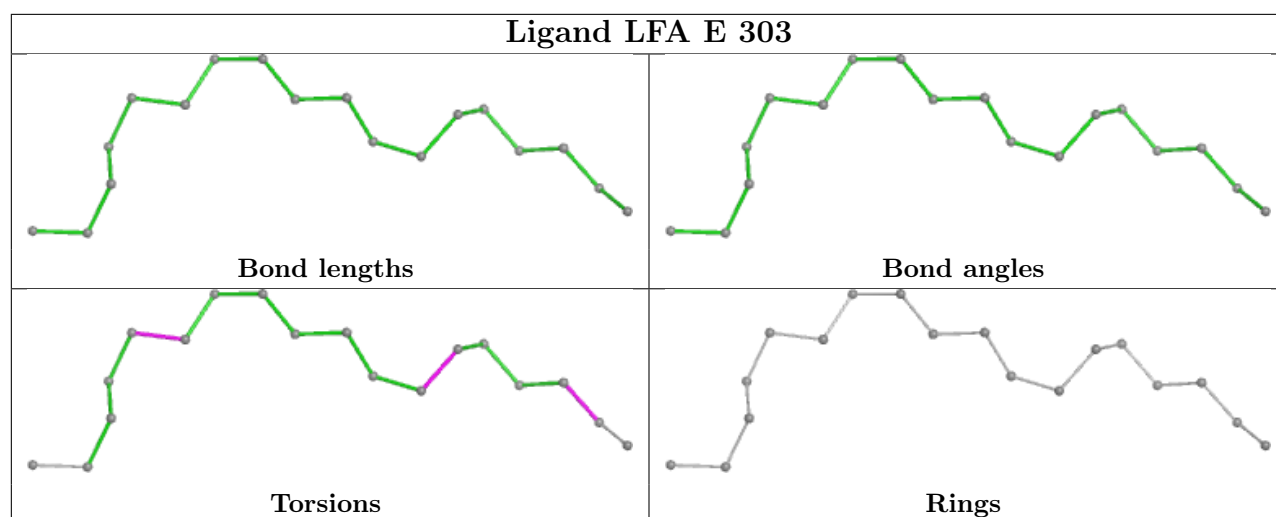


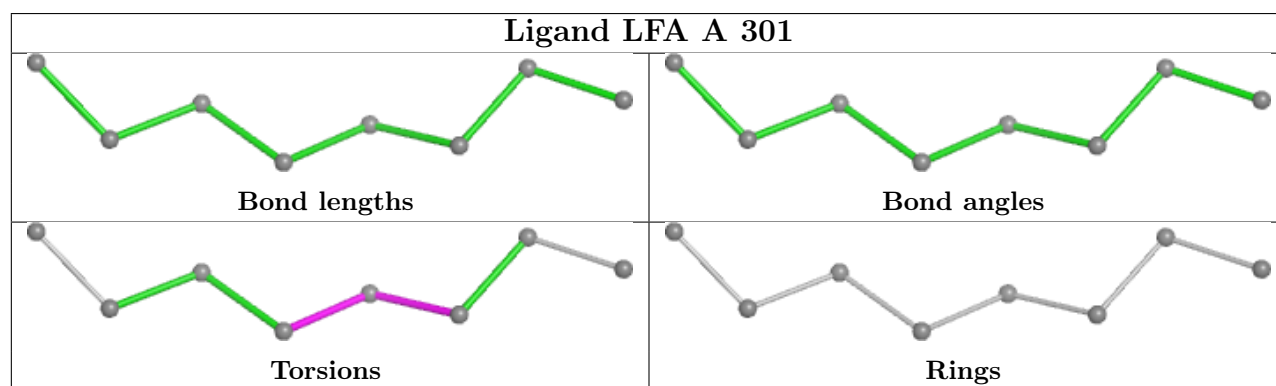
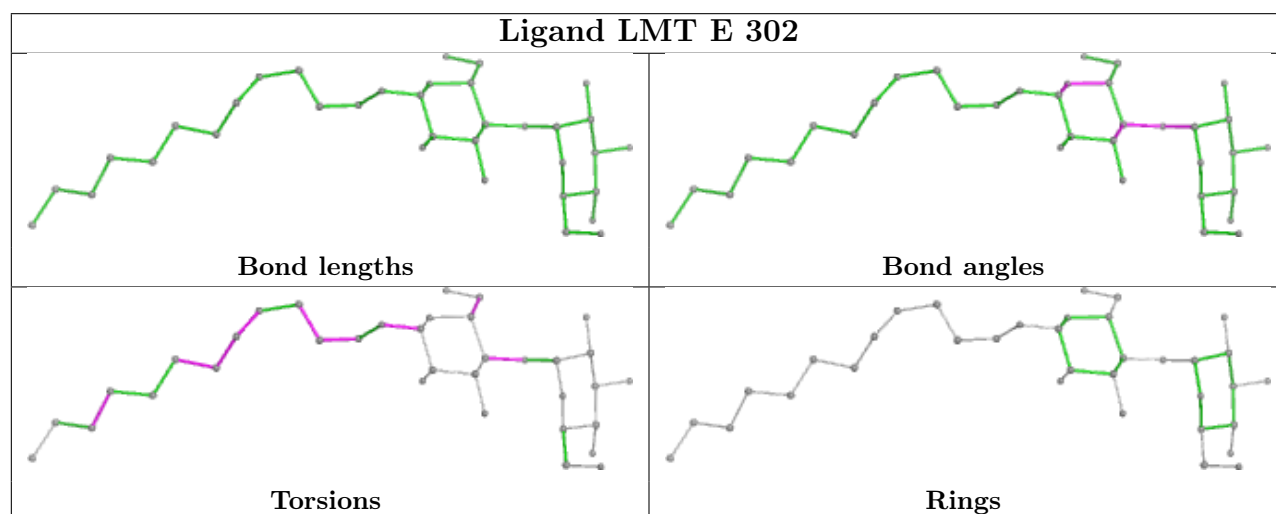
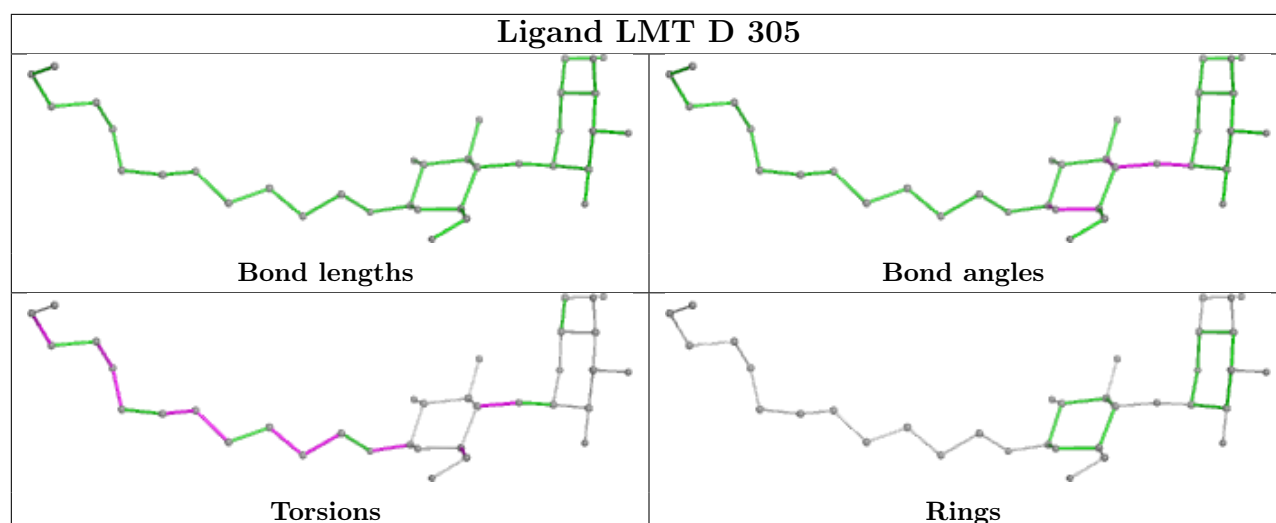


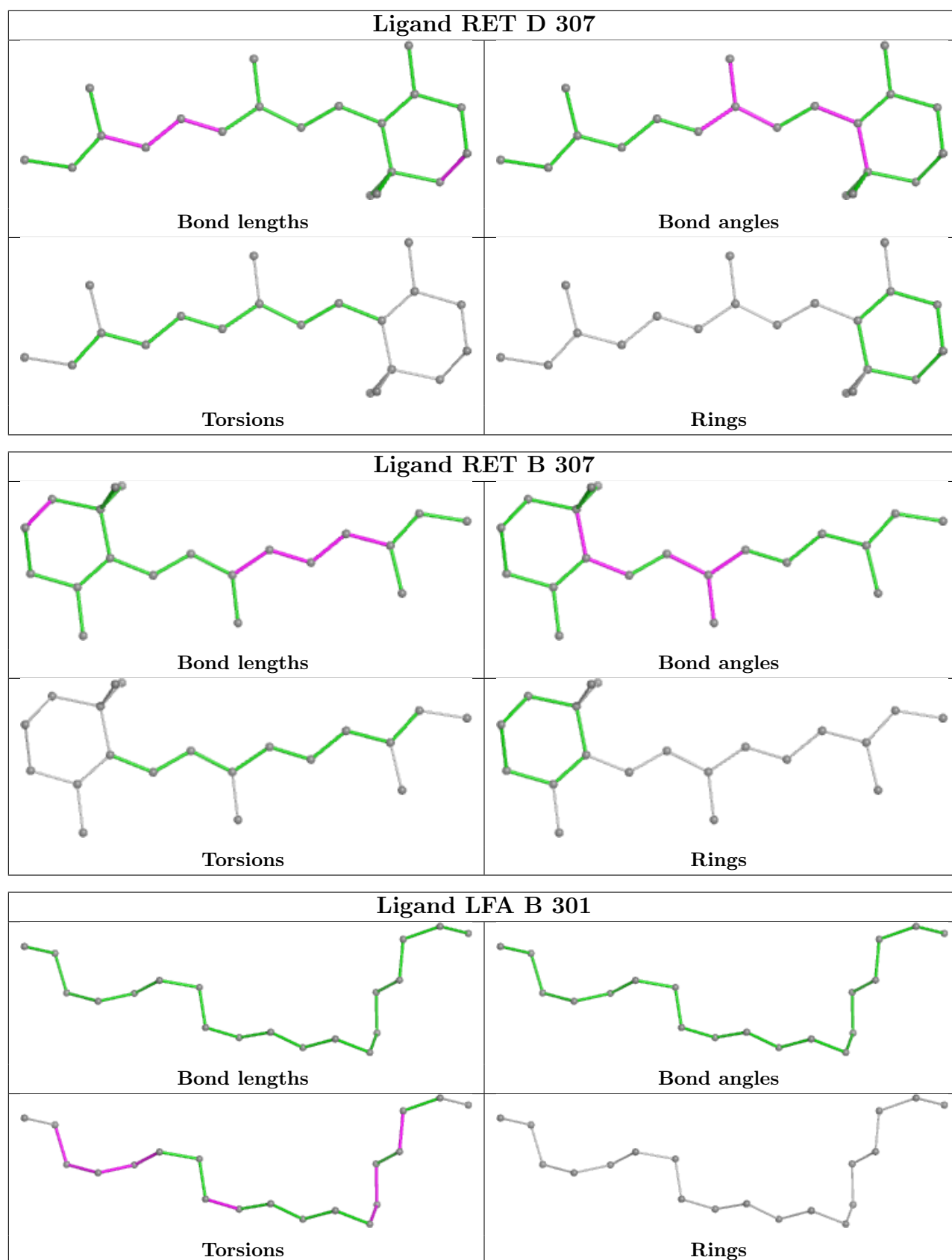


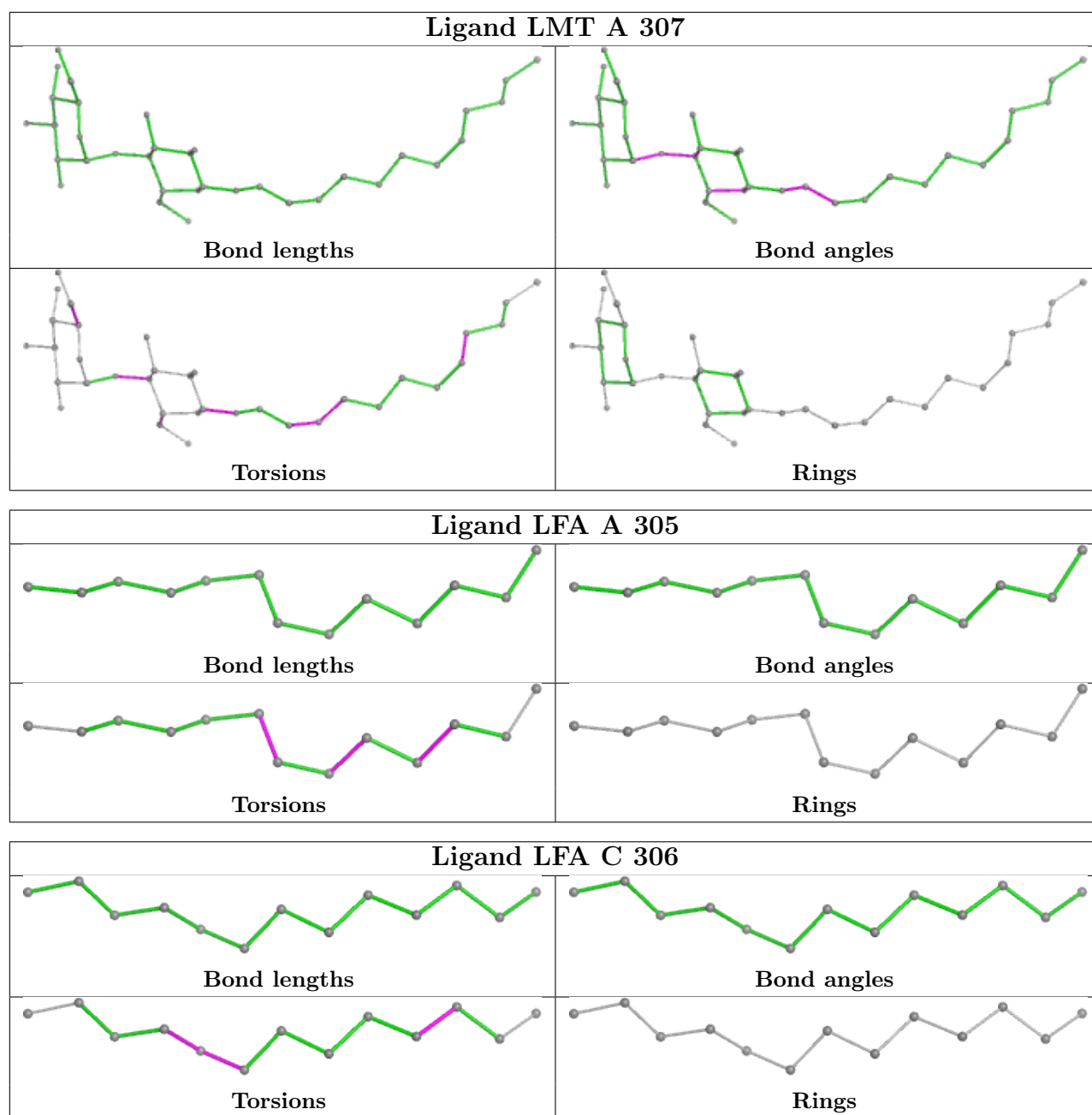


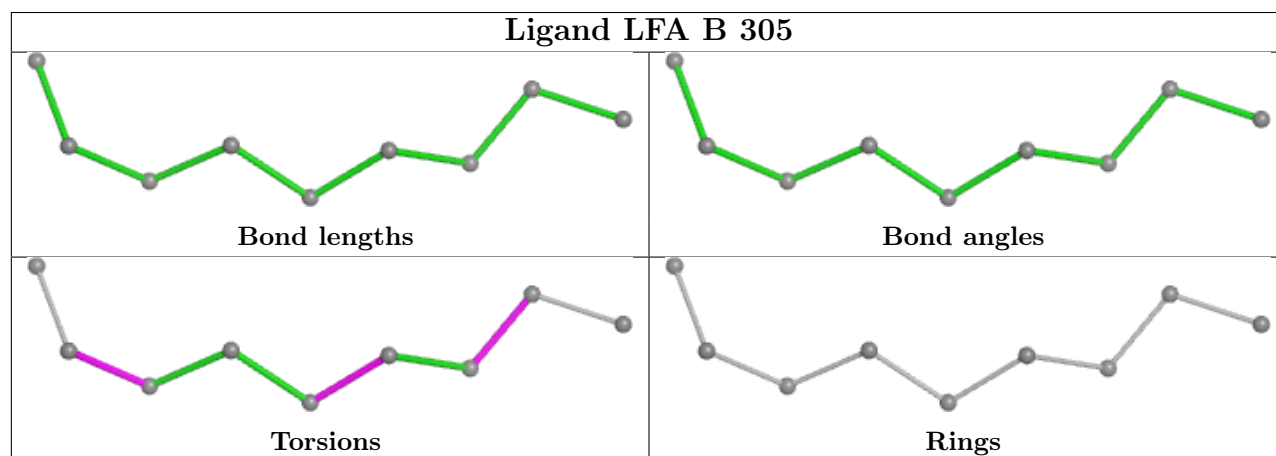
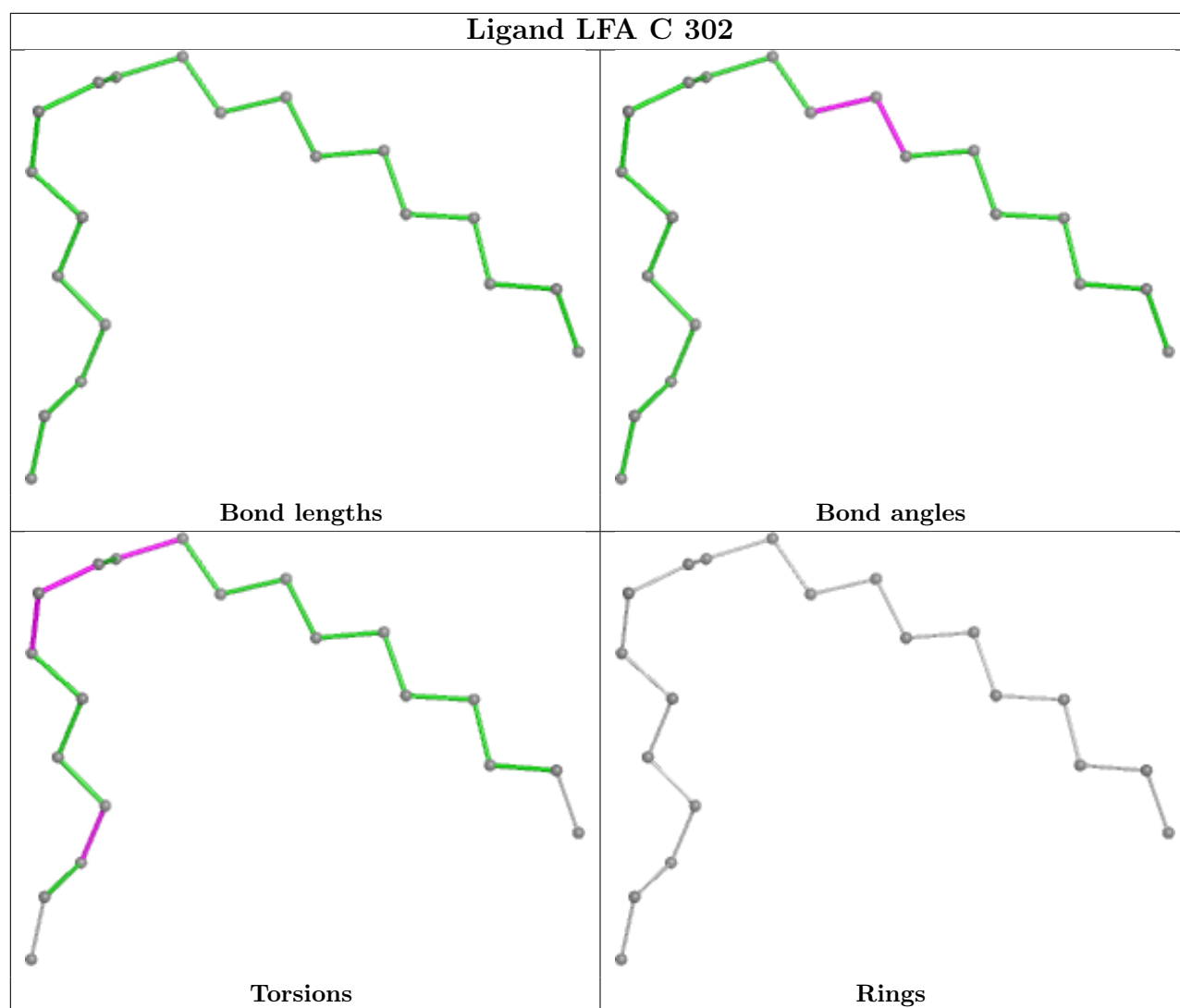


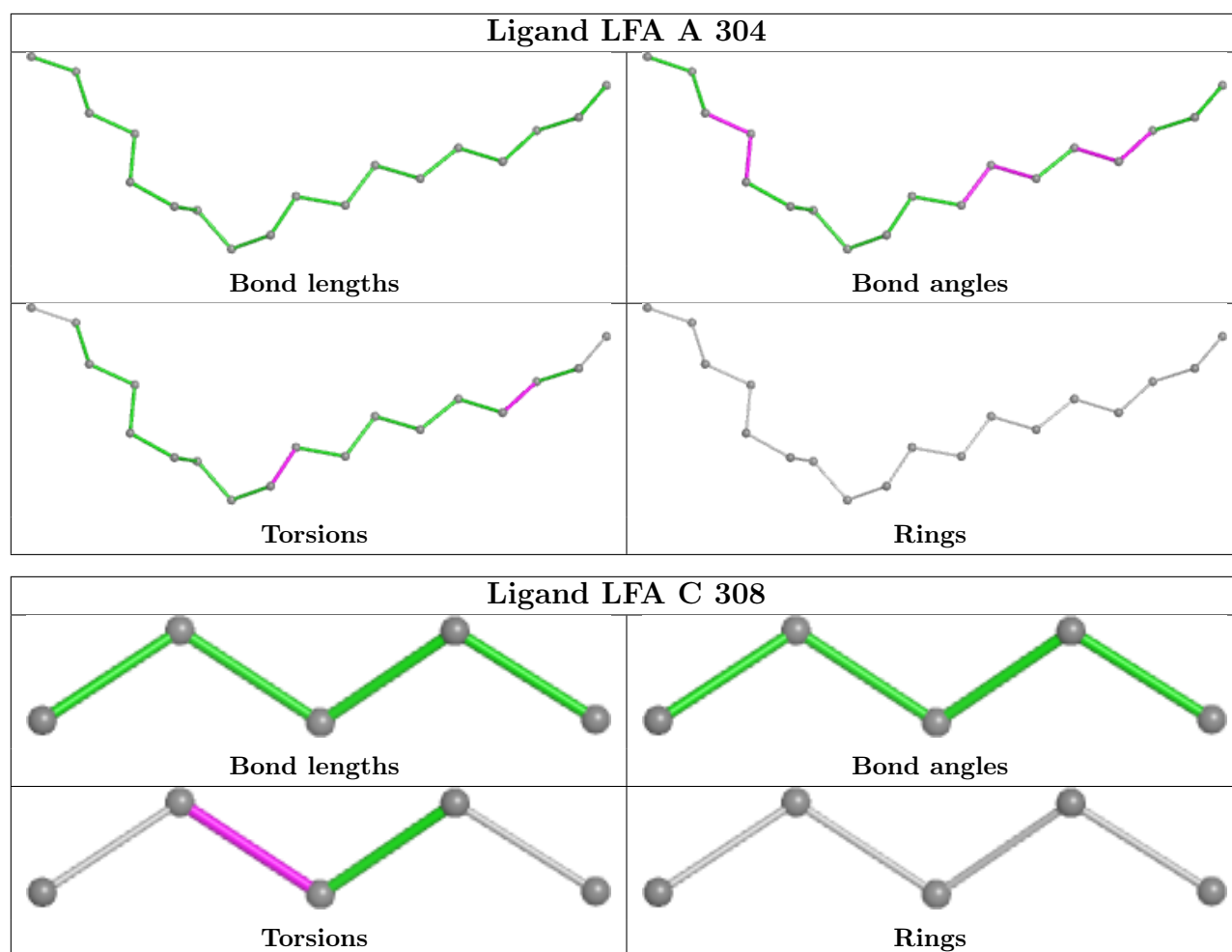












4.7 Other polymers [i](#)

There are no such residues in this entry.

4.8 Polymer linkage issues [i](#)

There are no chain breaks in this entry.

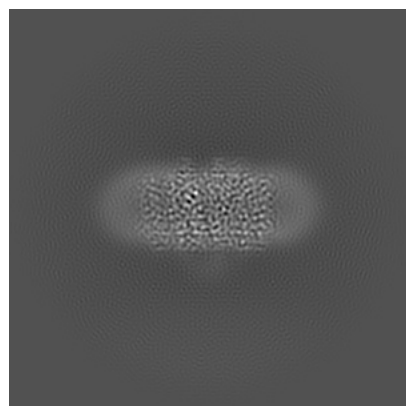
5 Map visualisation [i](#)

This section contains visualisations of the EMDB entry EMD-53520. These allow visual inspection of the internal detail of the map and identification of artifacts.

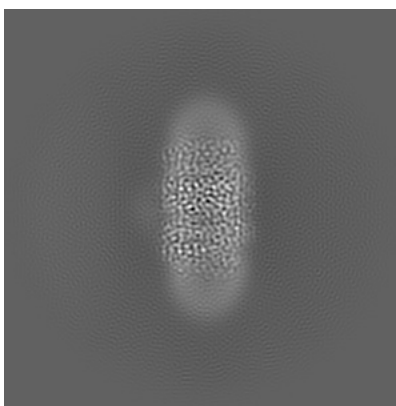
Images derived from a raw map, generated by summing the deposited half-maps, are presented below the corresponding image components of the primary map to allow further visual inspection and comparison with those of the primary map.

5.1 Orthogonal projections [i](#)

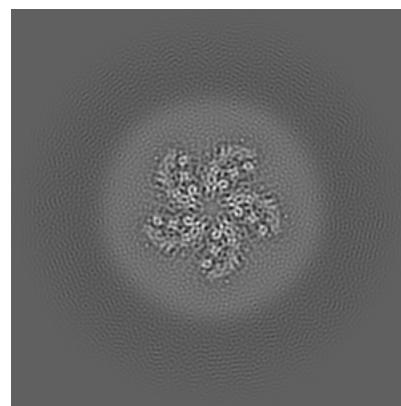
5.1.1 Primary map



X

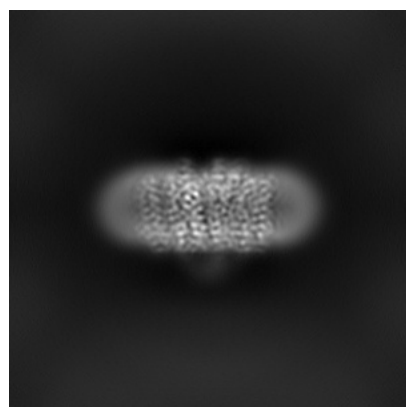


Y

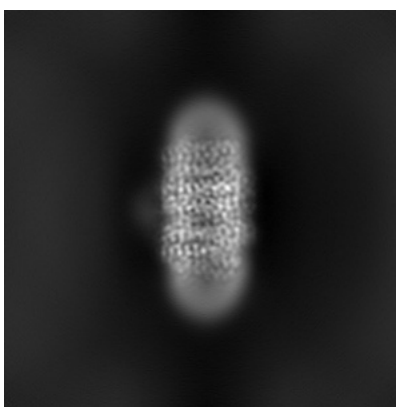


Z

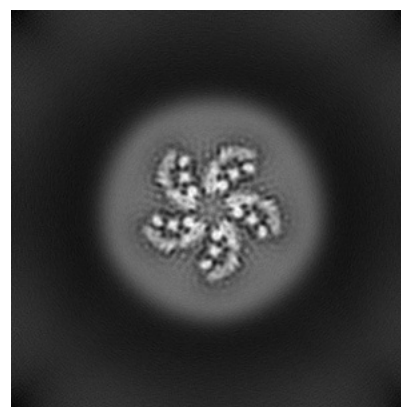
5.1.2 Raw map



X



Y

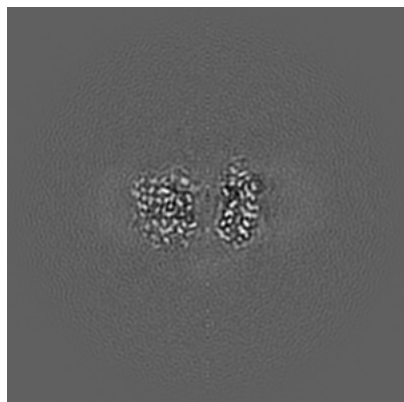


Z

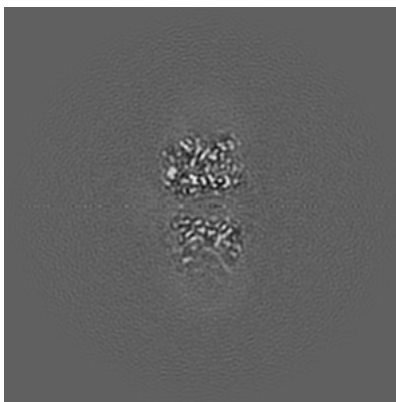
The images above show the map projected in three orthogonal directions.

5.2 Central slices [i](#)

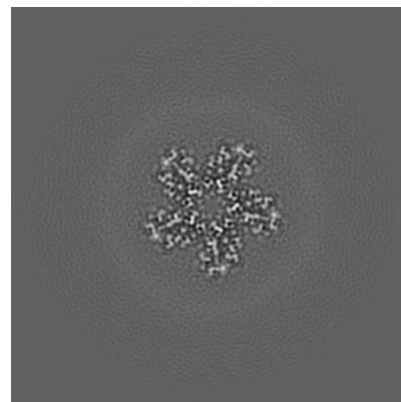
5.2.1 Primary map



X Index: 140

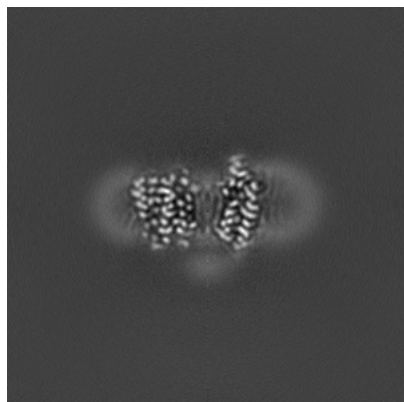


Y Index: 140

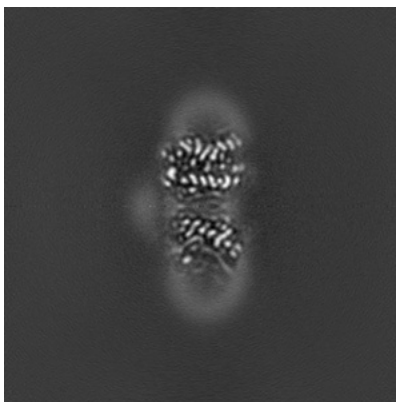


Z Index: 140

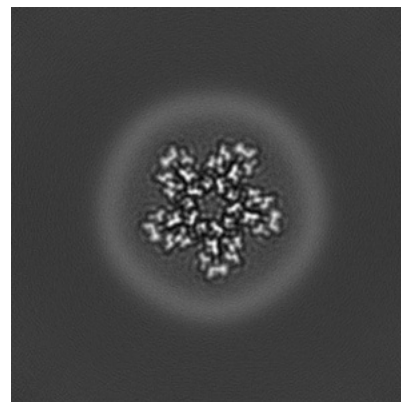
5.2.2 Raw map



X Index: 140



Y Index: 140

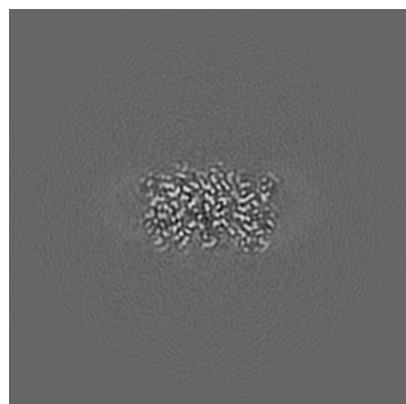


Z Index: 140

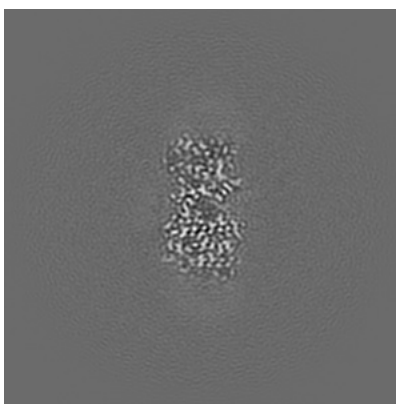
The images above show central slices of the map in three orthogonal directions.

5.3 Largest variance slices [i](#)

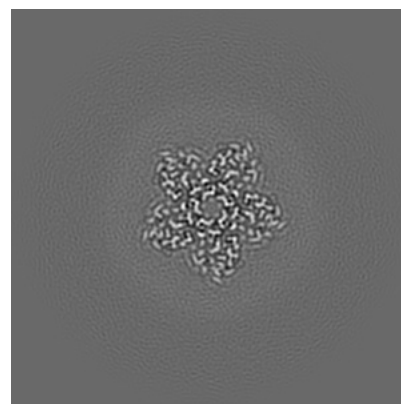
5.3.1 Primary map



X Index: 155

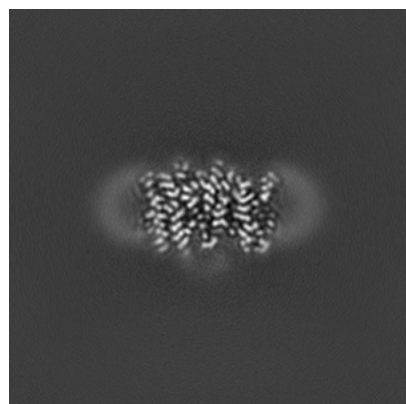


Y Index: 130

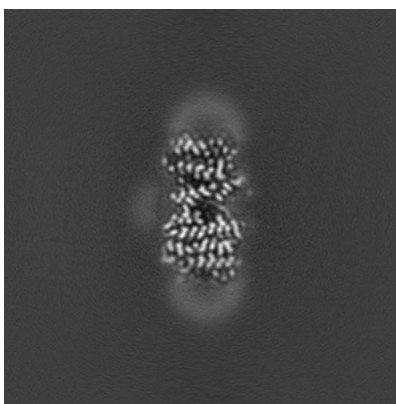


Z Index: 128

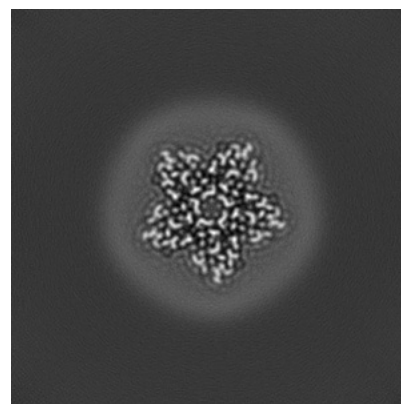
5.3.2 Raw map



X Index: 155



Y Index: 130

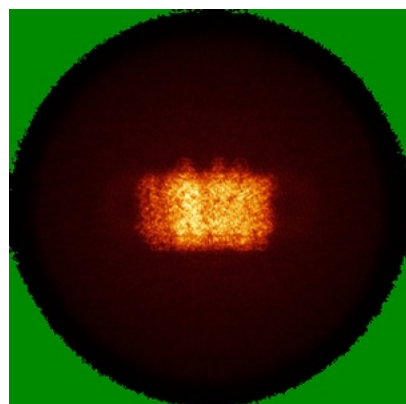


Z Index: 128

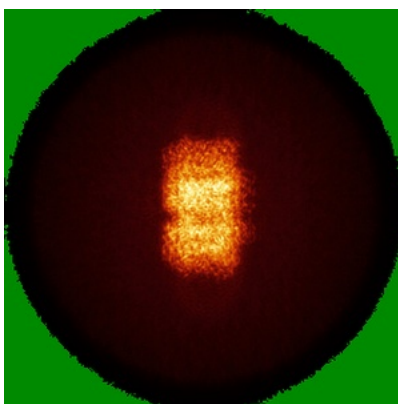
The images above show the largest variance slices of the map in three orthogonal directions.

5.4 Orthogonal standard-deviation projections (False-color) [i](#)

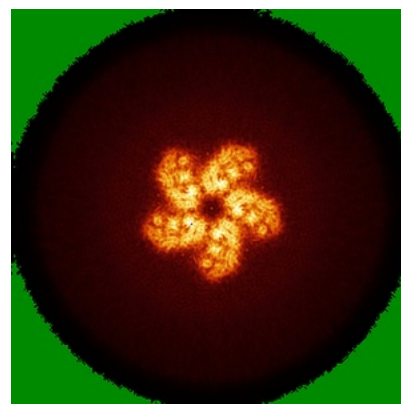
5.4.1 Primary map



X

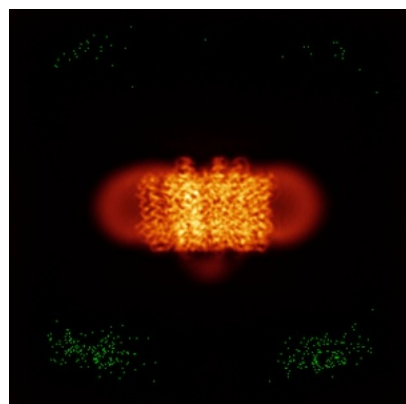


Y

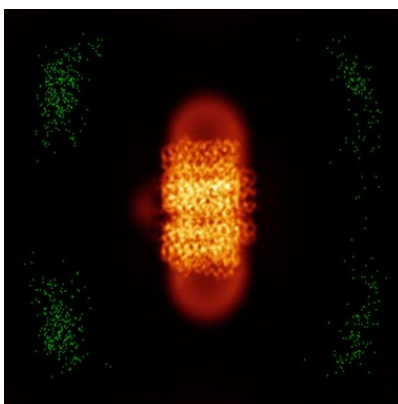


Z

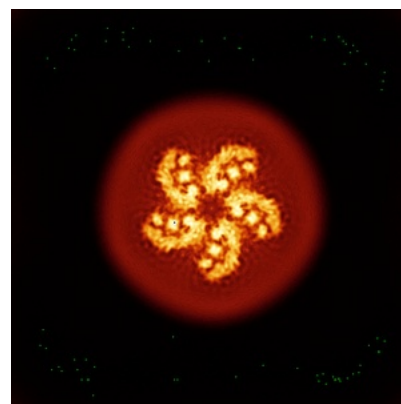
5.4.2 Raw map



X



Y

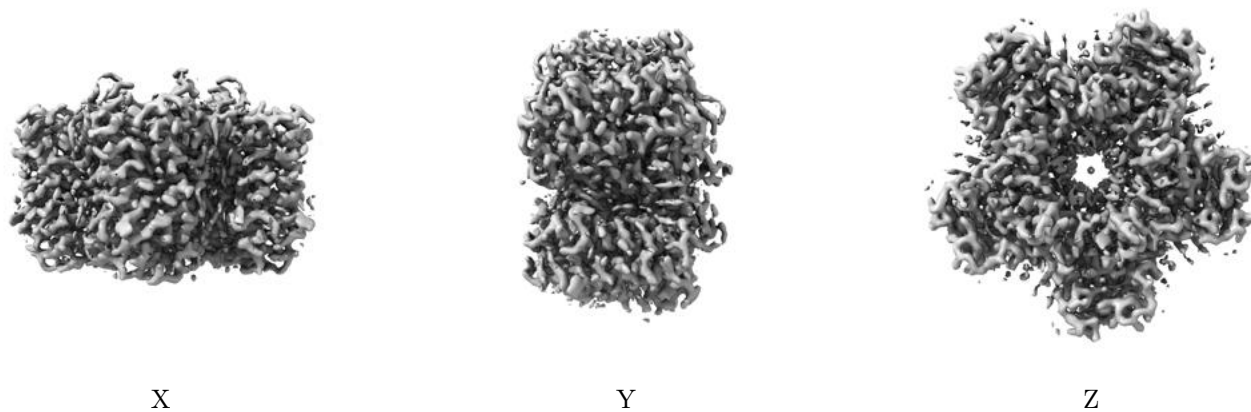


Z

The images above show the map standard deviation projections with false color in three orthogonal directions. Minimum values are shown in green, max in blue, and dark to light orange shades represent small to large values respectively.

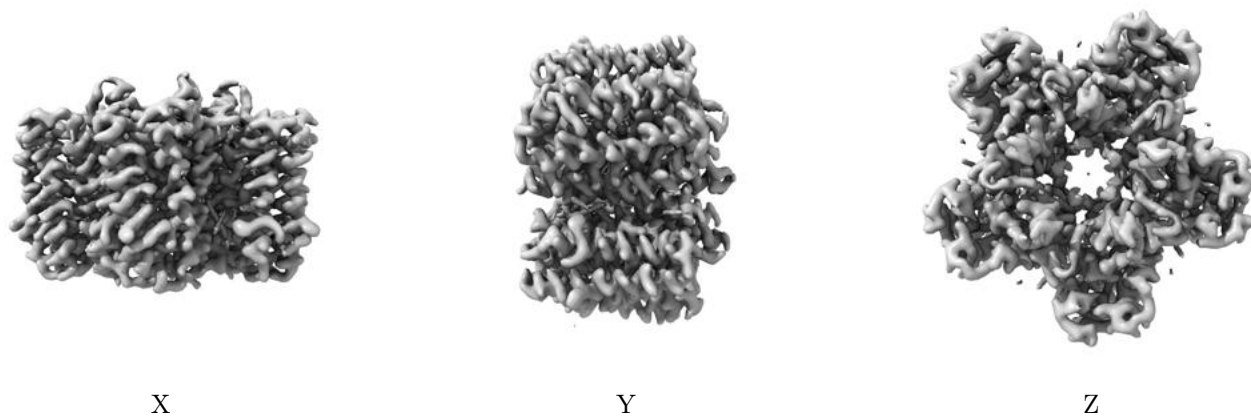
5.5 Orthogonal surface views [i](#)

5.5.1 Primary map



The images above show the 3D surface view of the map at the recommended contour level 0.137. These images, in conjunction with the slice images, may facilitate assessment of whether an appropriate contour level has been provided.

5.5.2 Raw map



These images show the 3D surface of the raw map. The raw map's contour level was selected so that its surface encloses the same volume as the primary map does at its recommended contour level.

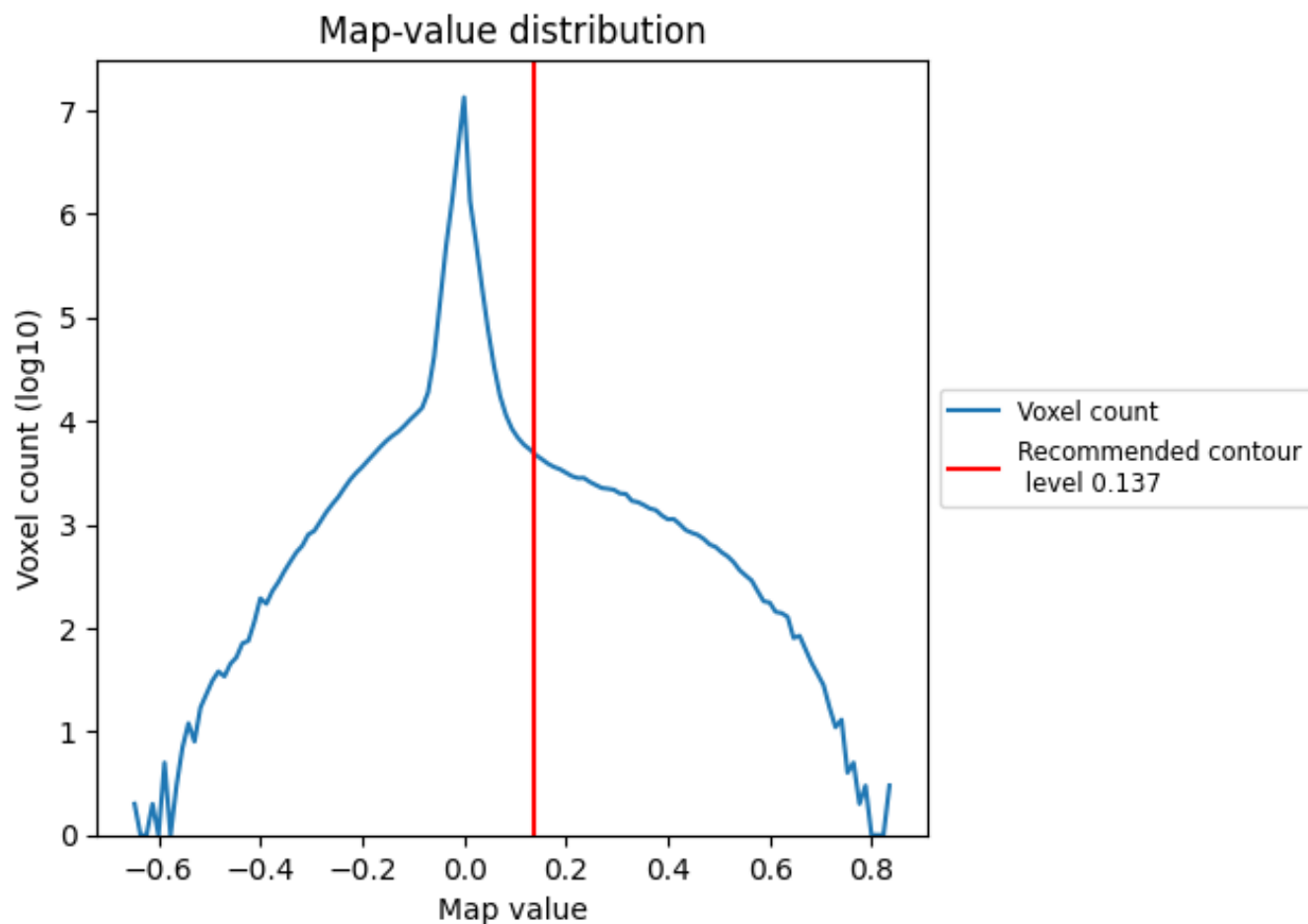
5.6 Mask visualisation [i](#)

This section was not generated. No masks/segmentation were deposited.

6 Map analysis [i](#)

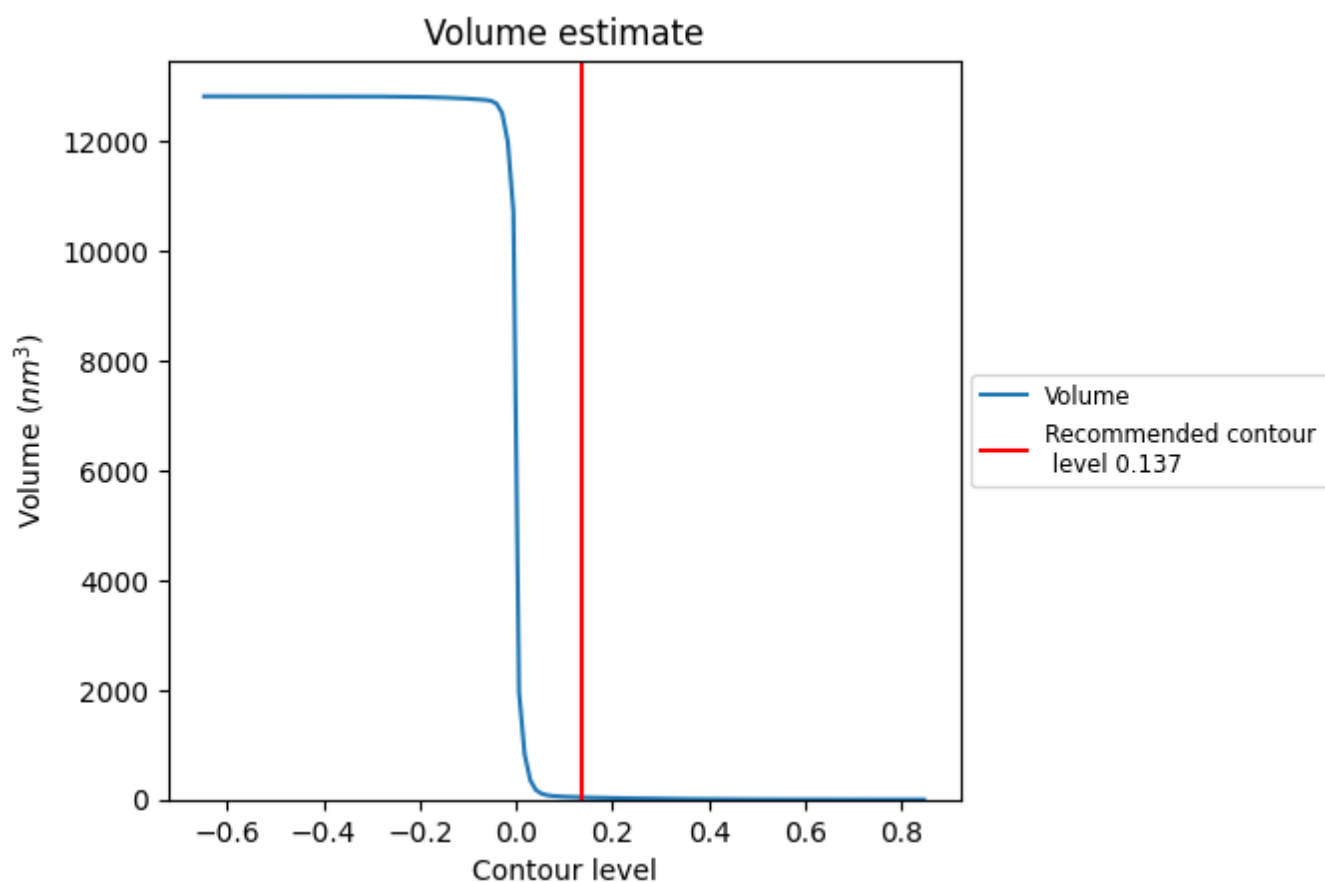
This section contains the results of statistical analysis of the map.

6.1 Map-value distribution [i](#)



The map-value distribution is plotted in 128 intervals along the x-axis. The y-axis is logarithmic. A spike in this graph at zero usually indicates that the volume has been masked.

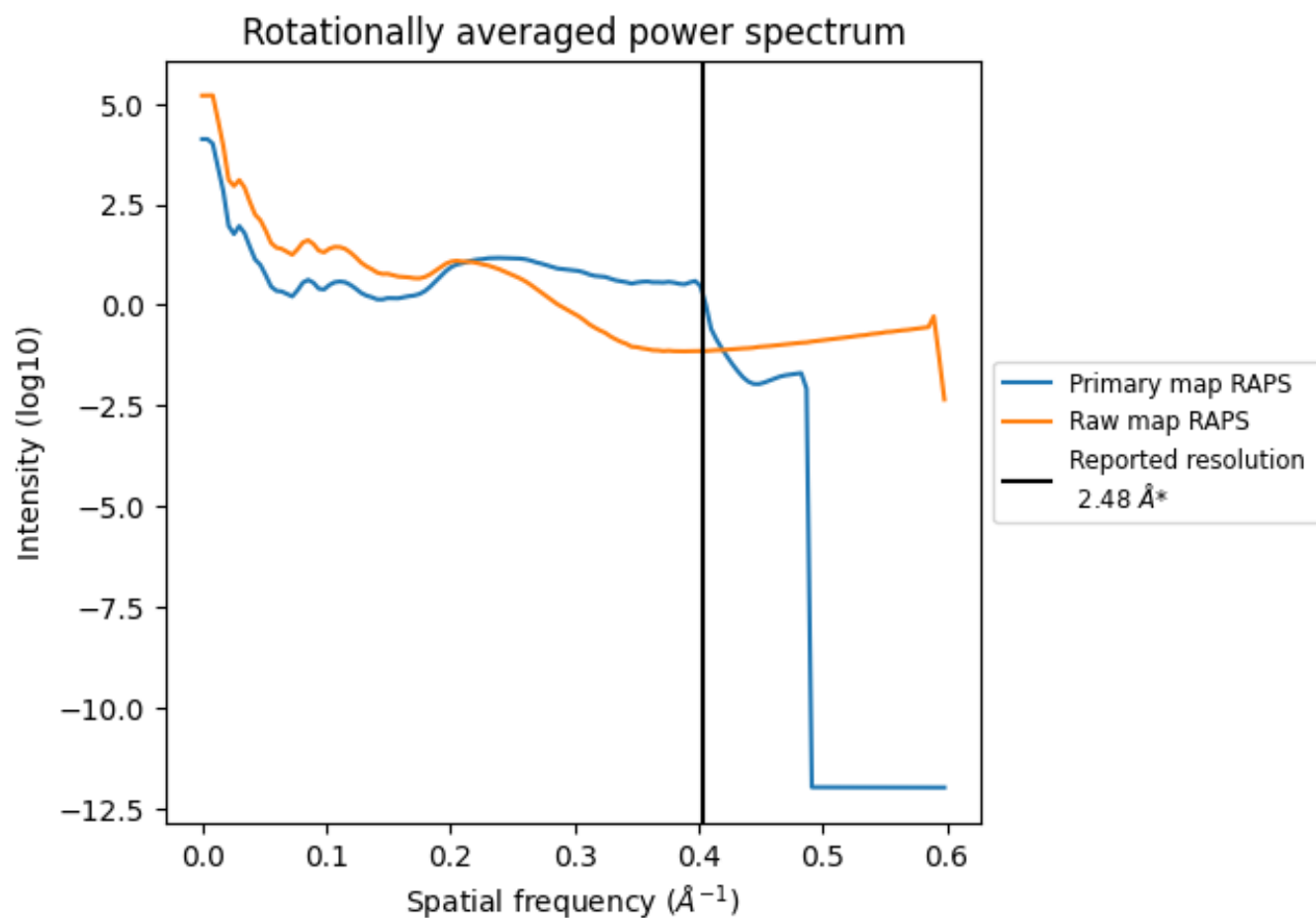
6.2 Volume estimate [i](#)



The volume at the recommended contour level is 40 nm^3 ; this corresponds to an approximate mass of 36 kDa.

The volume estimate graph shows how the enclosed volume varies with the contour level. The recommended contour level is shown as a vertical line and the intersection between the line and the curve gives the volume of the enclosed surface at the given level.

6.3 Rotationally averaged power spectrum ⓘ

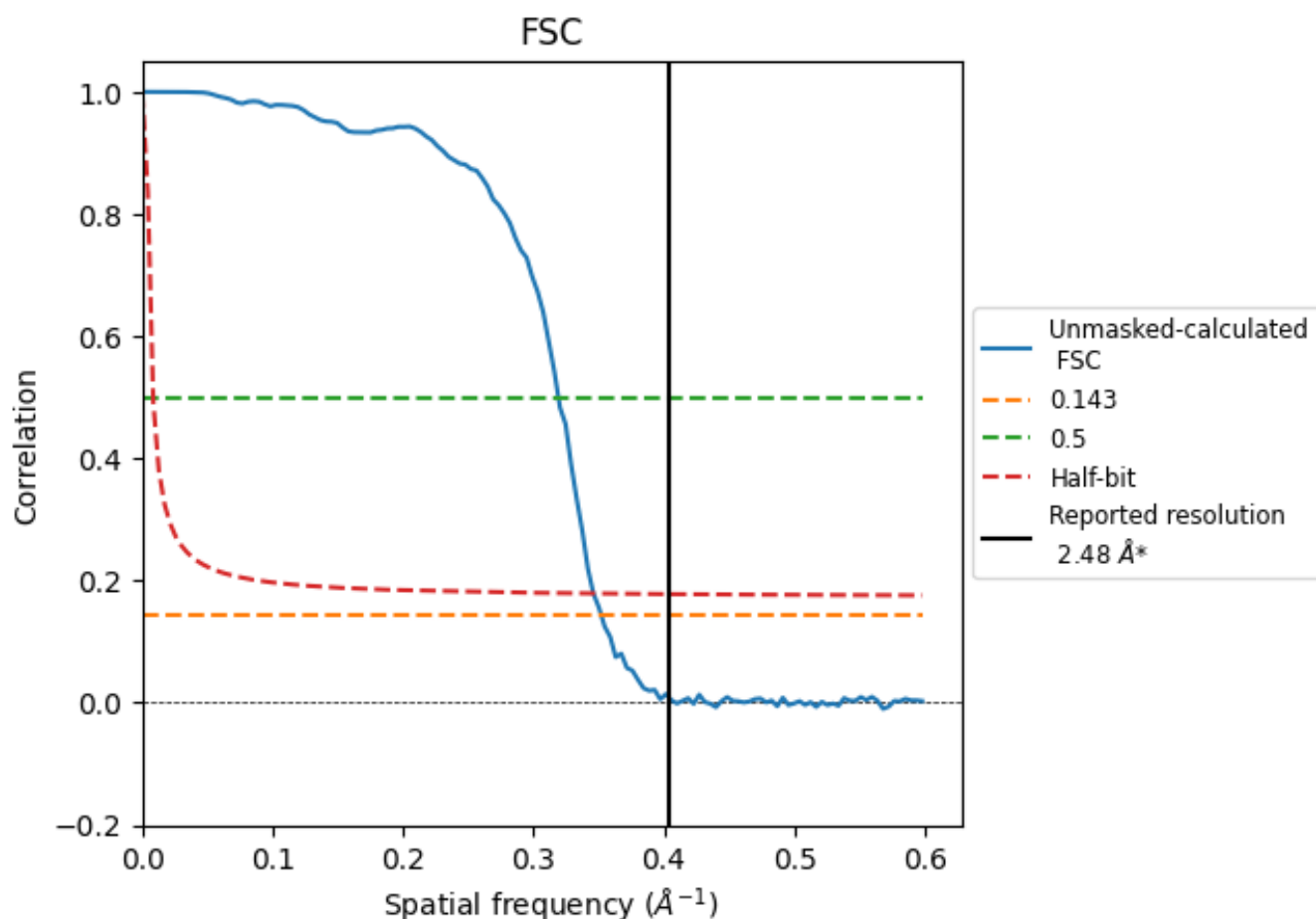


*Reported resolution corresponds to spatial frequency of 0.403 Å⁻¹

7 Fourier-Shell correlation [i](#)

Fourier-Shell Correlation (FSC) is the most commonly used method to estimate the resolution of single-particle and subtomogram-averaged maps. The shape of the curve depends on the imposed symmetry, mask and whether or not the two 3D reconstructions used were processed from a common reference. The reported resolution is shown as a black line. A curve is displayed for the half-bit criterion in addition to lines showing the 0.143 gold standard cut-off and 0.5 cut-off.

7.1 FSC [i](#)



*Reported resolution corresponds to spatial frequency of 0.403 \AA^{-1}

7.2 Resolution estimates [i](#)

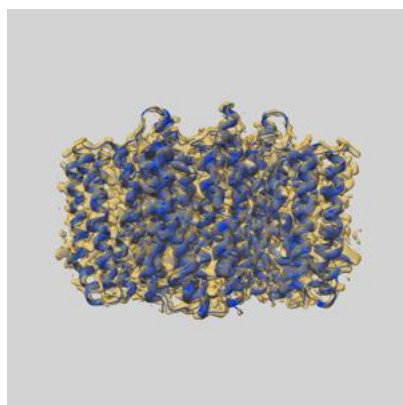
Resolution estimate (Å)	Estimation criterion (FSC cut-off)		
	0.143	0.5	Half-bit
Reported by author	2.48	-	-
Author-provided FSC curve	-	-	-
Unmasked-calculated*	2.84	3.13	2.89

*Resolution estimate based on FSC curve calculated by comparison of deposited half-maps. The value from deposited half-maps intersecting FSC 0.143 CUT-OFF 2.84 differs from the reported value 2.48 by more than 10 %

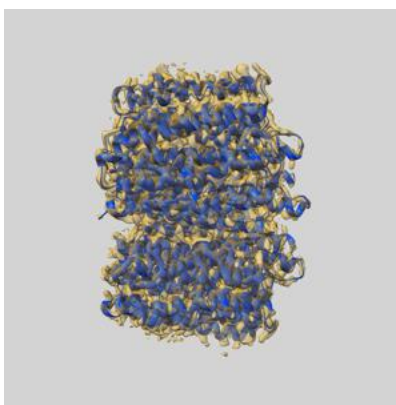
8 Map-model fit [i](#)

This section contains information regarding the fit between EMDB map EMD-53520 and PDB model 9R22. Per-residue inclusion information can be found in section ?? on page ??.

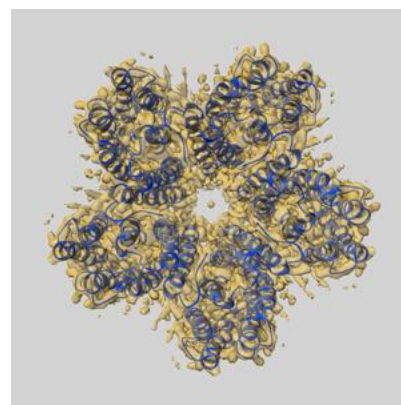
8.1 Map-model overlay [i](#)



X



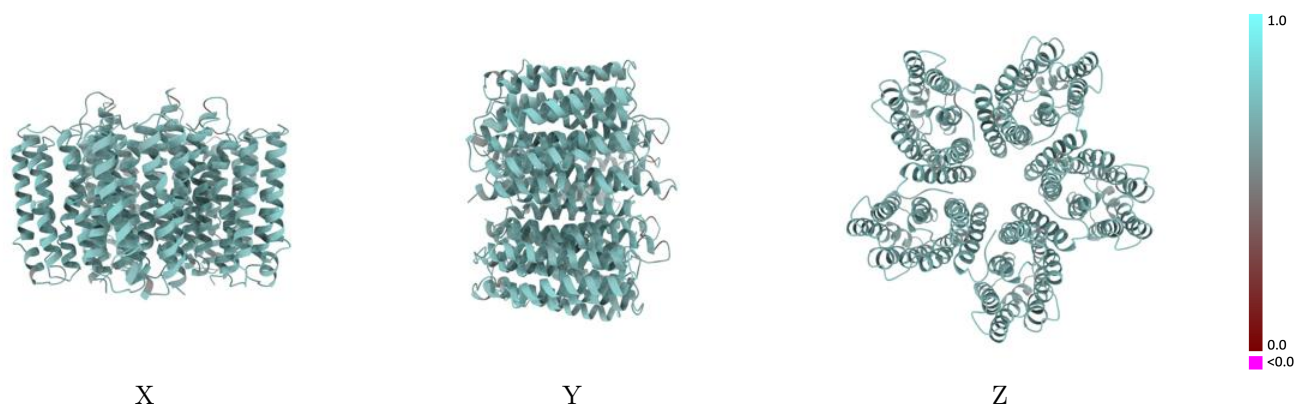
Y



Z

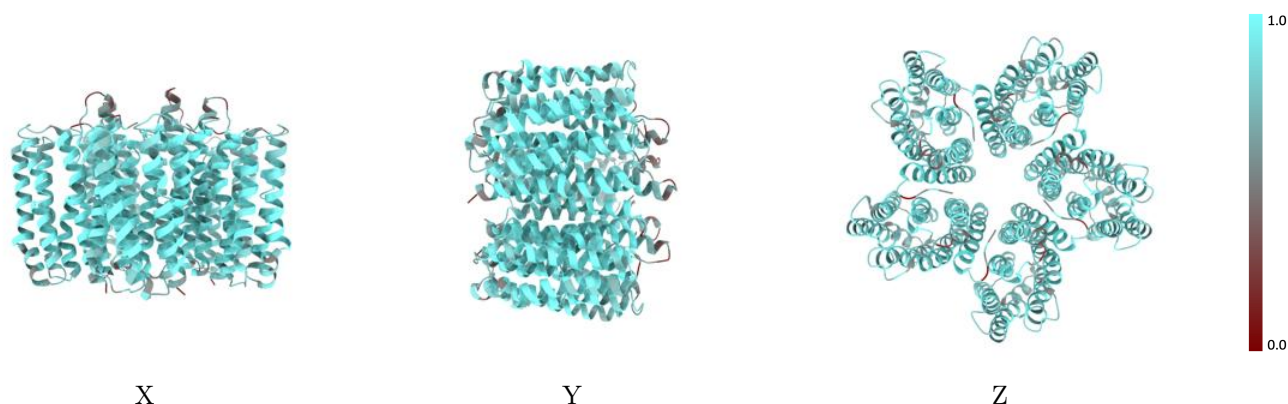
The images above show the 3D surface view of the map at the recommended contour level 0.137 at 50% transparency in yellow overlaid with a ribbon representation of the model coloured in blue. These images allow for the visual assessment of the quality of fit between the atomic model and the map.

8.2 Q-score mapped to coordinate model [i](#)



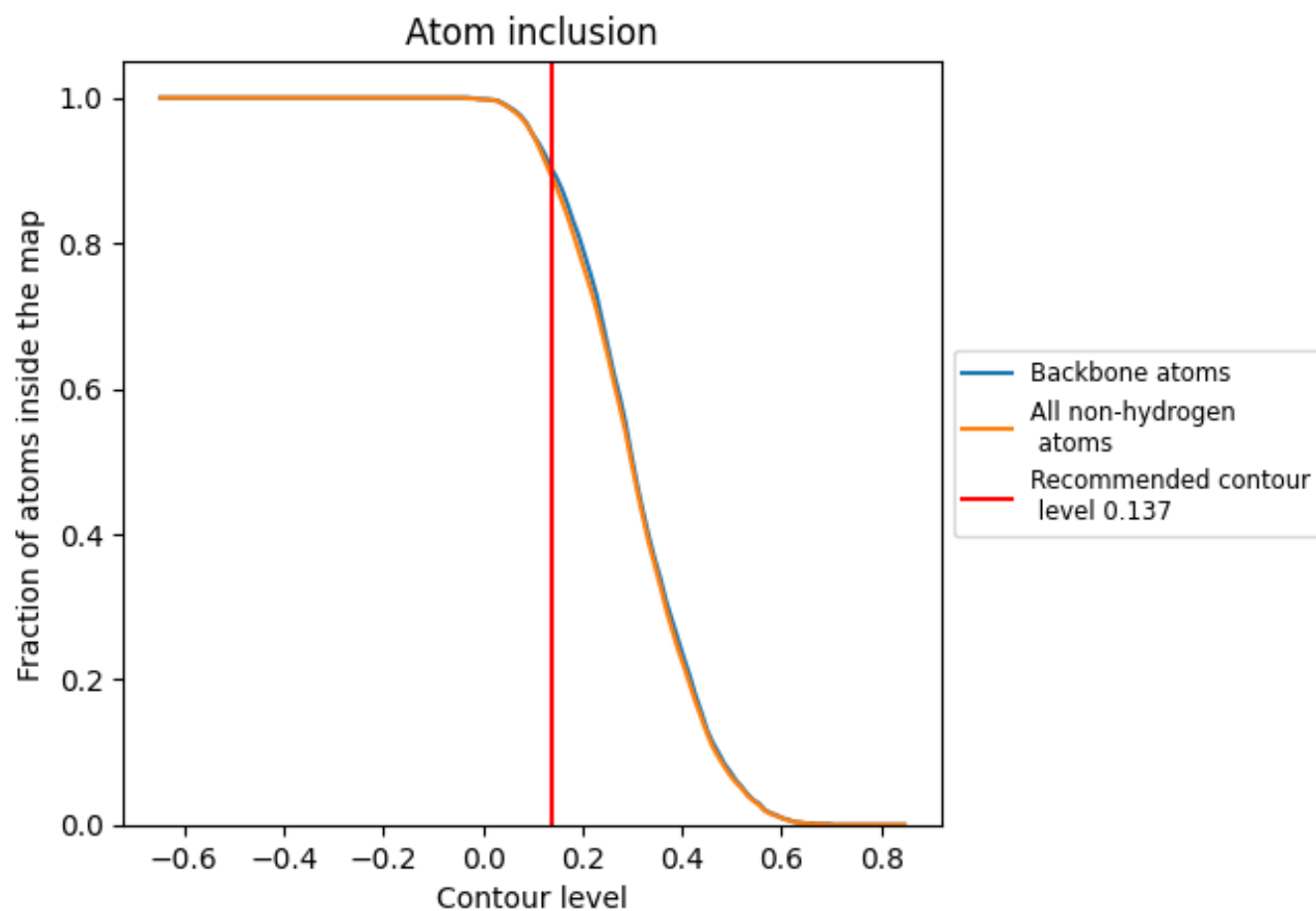
The images above show the model with each residue coloured according to its Q-score. This shows their resolvability in the map with higher Q-score values reflecting better resolvability. Please note: Q-score is calculating the resolvability of atoms, and thus high values are only expected at resolutions at which atoms can be resolved. Low Q-score values may therefore be expected for many entries.

8.3 Atom inclusion mapped to coordinate model [i](#)



The images above show the model with each residue coloured according to its atom inclusion. This shows to what extent they are inside the map at the recommended contour level (0.137).

8.4 Atom inclusion [i](#)



At the recommended contour level, 90% of all backbone atoms, 89% of all non-hydrogen atoms, are inside the map.

8.5 Map-model fit summary ⓘ

The table lists the average atom inclusion at the recommended contour level (0.137) and Q-score for the entire model and for each chain.

Chain	Atom inclusion	Q-score
All	<div></div> 0.8930	<div></div> 0.6790
A	<div></div> 0.8950	<div></div> 0.6790
B	<div></div> 0.8980	<div></div> 0.6800
C	<div></div> 0.8900	<div></div> 0.6800
D	<div></div> 0.8910	<div></div> 0.6760
E	<div></div> 0.8950	<div></div> 0.6780

