



Full wwPDB X-ray Structure Validation Report ⓘ

Sep 2, 2025 – 12:22 PM EDT

PDB ID : 9Q4W / pdb_00009q4w
Title : Structure of rat neuronal nitric oxide synthase R349A mutant heme domain bound with 6-((5-(2-(4,4-difluoropiperidin-1-yl)ethyl-2,3-difluorophenoxy)methyl)-4-methylpyridin-2-amine
Authors : Li, H.; Poulos, T.L.
Deposited on : 2025-08-20
Resolution : 1.93 Å(reported)

This is a Full wwPDB X-ray Structure Validation Report for a publicly released PDB entry.

We welcome your comments at validation@mail.wwpdb.org

A user guide is available at

<https://www.wwpdb.org/validation/2017/XrayValidationReportHelp>

with specific help available everywhere you see the ⓘ symbol.

The types of validation reports are described at

<http://www.wwpdb.org/validation/2017/FAQs#types>.

The following versions of software and data (see [references ⓘ](#)) were used in the production of this report:

MolProbity	:	4-5-2 with Phenix2.0rc1
Mogul	:	2022.3.0, CSD as543be (2022)
Xtriage (Phenix)	:	2.0rc1
EDS	:	3.0
buster-report	:	1.1.7 (2018)
Percentile statistics	:	20231227.v01 (using entries in the PDB archive December 27th 2023)
CCP4	:	9.0.006 (Gargrove)
Density-Fitness	:	1.0.12
Ideal geometry (proteins)	:	Engh & Huber (2001)
Ideal geometry (DNA, RNA)	:	Parkinson et al. (1996)
Validation Pipeline (wwPDB-VP)	:	2.45.1

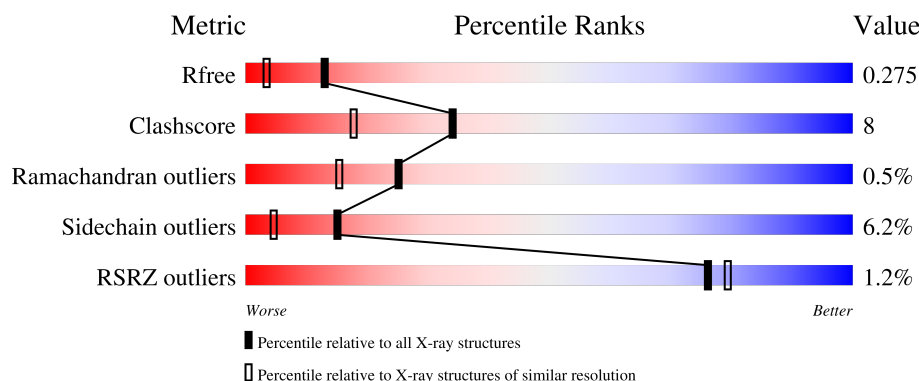
1 Overall quality at a glance

The following experimental techniques were used to determine the structure:

X-RAY DIFFRACTION


The reported resolution of this entry is 1.93 Å.

Percentile scores (ranging between 0-100) for global validation metrics of the entry are shown in the following graphic. The table shows the number of entries on which the scores are based.



Metric	Whole archive (#Entries)	Similar resolution (#Entries, resolution range(Å))
R_{free}	164625	1306 (1.94-1.94)
Clashscore	180529	1400 (1.94-1.94)
Ramachandran outliers	177936	1387 (1.94-1.94)
Sidechain outliers	177891	1387 (1.94-1.94)
RSRZ outliers	164620	1306 (1.94-1.94)

The table below summarises the geometric issues observed across the polymeric chains and their fit to the electron density. The red, orange, yellow and green segments of the lower bar indicate the fraction of residues that contain outliers for ≥ 3 , 2, 1 and 0 types of geometric quality criteria respectively. A grey segment represents the fraction of residues that are not modelled. The numeric value for each fraction is indicated below the corresponding segment, with a dot representing fractions $\leq 5\%$. The upper red bar (where present) indicates the fraction of residues that have poor fit to the electron density. The numeric value is given above the bar.

Mol	Chain	Length	Quality of chain
1	A	422	

2 Entry composition [i](#)

There are 6 unique types of molecules in this entry. The entry contains 3481 atoms, of which 0 are hydrogens and 0 are deuteriums.

In the tables below, the ZeroOcc column contains the number of atoms modelled with zero occupancy, the AltConf column contains the number of residues with at least one atom in alternate conformation and the Trace column contains the number of residues modelled with at most 2 atoms.

- Molecule 1 is a protein called Nitric oxide synthase, brain.

Mol	Chain	Residues	Atoms					ZeroOcc	AltConf	Trace
			Total	C	N	O	S			
1	A	414	3372	2157	577	616	22	0	2	0

There is a discrepancy between the modelled and reference sequences:

Chain	Residue	Modelled	Actual	Comment	Reference
A	349	ALA	ARG	engineered mutation	UNP P29476

- Molecule 2 is PROTOPORPHYRIN IX CONTAINING FE (CCD ID: HEM) (formula: $C_{34}H_{32}FeN_4O_4$).



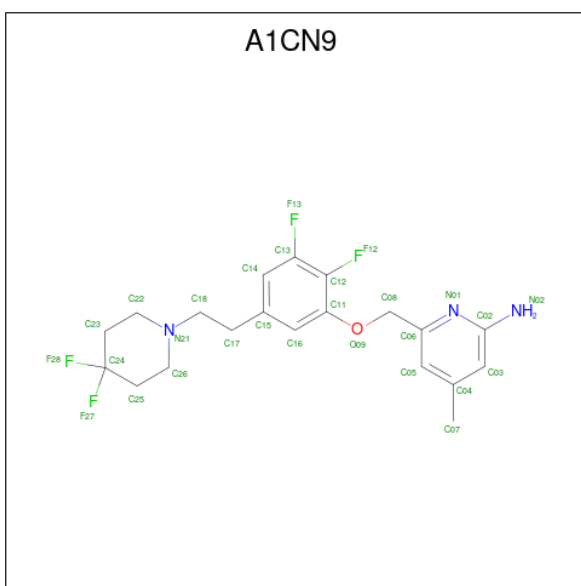
Mol	Chain	Residues	Atoms					ZeroOcc	AltConf
			Total	C	Fe	N	O		
2	A	1	43	34	1	4	4	0	0

- Molecule 3 is 5,6,7,8-TETRAHYDROBIOPTERIN (CCD ID: H4B) (formula: $C_9H_{15}N_5O_3$).



Mol	Chain	Residues	Atoms				ZeroOcc	AltConf
3	A	1	Total	C	N	O	0	0
			17	9	5	3		

- Molecule 4 is 6-({5-[2-(4,4-difluoropiperidin-1-yl)ethyl]-2,3-difluorophenoxy}methyl)-4-methylpyridin-2-amine (CCD ID: A1CN9) (formula: $C_{20}H_{23}F_4N_3O$) (labeled as "Ligand of Interest" by depositor).



Mol	Chain	Residues	Atoms				ZeroOcc	AltConf
4	A	1	Total	C	F	N	O	0
			28	20	4	3	1	

- Molecule 5 is ZINC ION (CCD ID: ZN) (formula: Zn).

Mol	Chain	Residues	Atoms		ZeroOcc	AltConf
5	A	1	Total 1	Zn 1	0	0

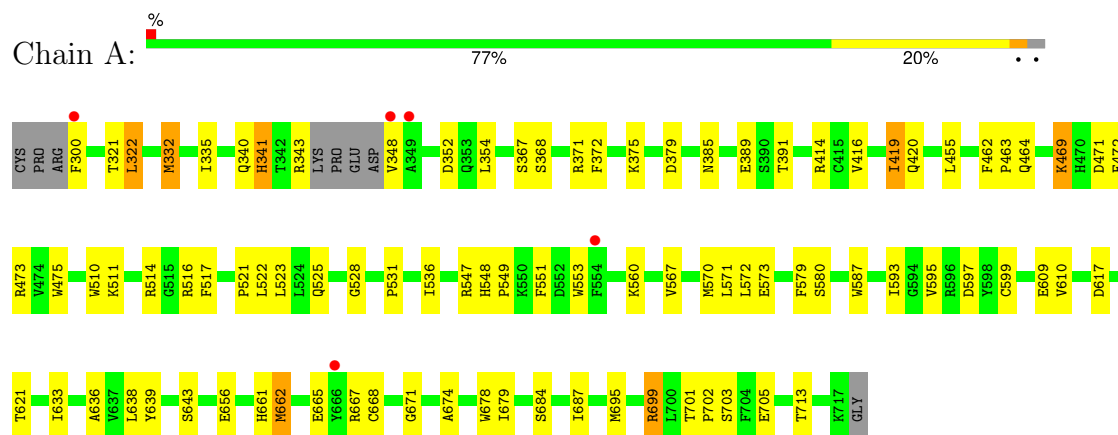
- Molecule 6 is water.

Mol	Chain	Residues	Atoms		ZeroOcc	AltConf
6	A	20	Total 20	O 20	0	0

3 Residue-property plots [i](#)

These plots are drawn for all protein, RNA, DNA and oligosaccharide chains in the entry. The first graphic for a chain summarises the proportions of the various outlier classes displayed in the second graphic. The second graphic shows the sequence view annotated by issues in geometry and electron density. Residues are color-coded according to the number of geometric quality criteria for which they contain at least one outlier: green = 0, yellow = 1, orange = 2 and red = 3 or more. A red dot above a residue indicates a poor fit to the electron density ($RSRZ > 2$). Stretches of 2 or more consecutive residues without any outlier are shown as a green connector. Residues present in the sample, but not in the model, are shown in grey.

- Molecule 1: Nitric oxide synthase, brain



4 Data and refinement statistics

Property	Value	Source
Space group	C 2 2 21	Depositor
Cell constants a, b, c, α , β , γ	48.98Å 114.19Å 164.39Å 90.00° 90.00° 90.00°	Depositor
Resolution (Å)	39.53 – 1.93 39.53 – 1.93	Depositor EDS
% Data completeness (in resolution range)	94.2 (39.53-1.93) 96.4 (39.53-1.93)	Depositor EDS
R_{merge}	0.13	Depositor
R_{sym}	(Not available)	Depositor
$\langle I/\sigma(I) \rangle$ ¹	1.20 (at 1.94Å)	Xtriage
Refinement program	PHENIX (1.11.1 _2575: ???)	Depositor
R, R_{free}	0.222 , 0.272 0.226 , 0.275	Depositor DCC
R_{free} test set	1776 reflections (4.10%)	wwPDB-VP
Wilson B-factor (Å ²)	40.4	Xtriage
Anisotropy	1.232	Xtriage
Bulk solvent k_{sol} (e/Å ³), B_{sol} (Å ²)	0.35 , 68.8	EDS
L-test for twinning ²	$\langle L \rangle = 0.48$, $\langle L^2 \rangle = 0.31$	Xtriage
Estimated twinning fraction	No twinning to report.	Xtriage
F_o, F_c correlation	0.96	EDS
Total number of atoms	3481	wwPDB-VP
Average B, all atoms (Å ²)	90.0	wwPDB-VP

Xtriage's analysis on translational NCS is as follows: *The largest off-origin peak in the Patterson function is 5.60% of the height of the origin peak. No significant pseudotranslation is detected.*

¹Intensities estimated from amplitudes.

²Theoretical values of $\langle |L| \rangle$, $\langle L^2 \rangle$ for acentric reflections are 0.5, 0.333 respectively for untwinned datasets, and 0.375, 0.2 for perfectly twinned datasets.

5 Model quality

5.1 Standard geometry

Bond lengths and bond angles in the following residue types are not validated in this section: H4B, A1CN9, ZN, HEM

The Z score for a bond length (or angle) is the number of standard deviations the observed value is removed from the expected value. A bond length (or angle) with $|Z| > 5$ is considered an outlier worth inspection. RMSZ is the root-mean-square of all Z scores of the bond lengths (or angles).

Mol	Chain	Bond lengths		Bond angles	
		RMSZ	$\# Z > 5$	RMSZ	$\# Z > 5$
1	A	0.29	0/3472	0.50	0/4710

There are no bond length outliers.

There are no bond angle outliers.

There are no chirality outliers.

There are no planarity outliers.

5.2 Too-close contacts

In the following table, the Non-H and H(model) columns list the number of non-hydrogen atoms and hydrogen atoms in the chain respectively. The H(added) column lists the number of hydrogen atoms added and optimized by MolProbity. The Clashes column lists the number of clashes within the asymmetric unit, whereas Symm-Clashes lists symmetry-related clashes.

Mol	Chain	Non-H	H(model)	H(added)	Clashes	Symm-Clashes
1	A	3372	0	3285	50	0
2	A	43	0	30	3	0
3	A	17	0	15	0	0
4	A	28	0	0	2	0
5	A	1	0	0	0	0
6	A	20	0	0	1	0
All	All	3481	0	3330	51	0

The all-atom clashscore is defined as the number of clashes found per 1000 atoms (including hydrogen atoms). The all-atom clashscore for this structure is 8.

All (51) close contacts within the same asymmetric unit are listed below, sorted by their clash magnitude.

Atom-1	Atom-2	Interatomic distance (Å)	Clash overlap (Å)
1:A:414:ARG:HB2	2:A:801:HEM:HBD2	1.56	0.86
1:A:343:ARG:HG3	1:A:571:LEU:HD22	1.69	0.74
1:A:419:ILE:HG13	1:A:661:HIS:HB2	1.75	0.68
1:A:674:ALA:HB3	1:A:695:MET:HB3	1.79	0.64
1:A:511:LYS:HE2	1:A:511:LYS:HA	1.79	0.64
1:A:341:HIS:NE2	2:A:801:HEM:O1D	2.33	0.61
1:A:420:GLN:HE21	1:A:587:TRP:HH2	1.50	0.59
1:A:332:MET:HG2	1:A:335:ILE:HG13	1.84	0.58
1:A:548:HIS:HD2	1:A:636:ALA:HB2	1.68	0.58
1:A:662:MET:HE1	1:A:695:MET:HG2	1.87	0.57
1:A:549:PRO:HG3	1:A:639:TYR:CG	2.40	0.57
1:A:595:VAL:O	1:A:599:CYS:HB2	2.08	0.54
1:A:322:LEU:HD11	1:A:343:ARG:HH22	1.74	0.53
1:A:517:PHE:HB2	1:A:560:LYS:HE3	1.90	0.52
1:A:343:ARG:NE	1:A:573:GLU:OE2	2.43	0.52
1:A:471:ASP:OD1	6:A:901:HOH:O	2.19	0.51
1:A:684:SER:HB3	1:A:687:ILE:HG12	1.93	0.51
1:A:367:SER:HA	1:A:372:PHE:HB2	1.93	0.50
1:A:414:ARG:HD3	1:A:678:TRP:CD2	2.46	0.50
1:A:375:LYS:NZ	1:A:379:ASP:OD1	2.44	0.49
1:A:510:TRP:CD1	1:A:521:PRO:HG3	2.48	0.49
1:A:570:MET:SD	4:A:803:A1CN9:F13	2.61	0.48
1:A:463:PRO:HG2	1:A:472:PHE:CE1	2.48	0.47
1:A:416:VAL:HG23	1:A:679:ILE:HG23	1.97	0.47
1:A:341:HIS:CE1	1:A:699:ARG:HH21	2.33	0.47
1:A:525:GLN:HE21	1:A:528:GLY:HA2	1.80	0.47
1:A:572:LEU:HB3	1:A:579:PHE:HB2	1.98	0.46
1:A:510:TRP:CE2	1:A:521:PRO:HD3	2.51	0.46
1:A:593:ILE:HA	1:A:597:ASP:HB2	1.98	0.45
1:A:462:PHE:HB3	1:A:463:PRO:HD2	2.00	0.44
1:A:522:LEU:HG	1:A:536:ILE:HD11	1.98	0.44
1:A:385:ASN:O	1:A:389:GLU:HG2	2.18	0.44
1:A:610:VAL:HG21	1:A:633:ILE:HD11	2.01	0.43
2:A:801:HEM:HBB2	2:A:801:HEM:HHC	2.02	0.42
1:A:464:GLN:HB3	1:A:579:PHE:CE2	2.54	0.42
1:A:475:TRP:CE2	1:A:531:PRO:HG3	2.54	0.42
1:A:473:ARG:HD2	1:A:580:SER:HB2	2.00	0.42
1:A:536:ILE:H	1:A:536:ILE:HD12	1.84	0.42
1:A:551:PHE:HB3	1:A:553:TRP:CE2	2.54	0.42
1:A:667:ARG:NH1	1:A:668[A]:CYS:SG	2.93	0.41
1:A:567:VAL:HG21	4:A:803:A1CN9:C12	2.50	0.41
1:A:548:HIS:CD2	1:A:636:ALA:HB2	2.52	0.41

Continued on next page...

Continued from previous page...

Atom-1	Atom-2	Interatomic distance (Å)	Clash overlap (Å)
1:A:343:ARG:HD3	1:A:343:ARG:HA	1.85	0.41
1:A:475:TRP:CZ2	1:A:531:PRO:HG3	2.55	0.41
1:A:703:SER:OG	1:A:705:GLU:OE2	2.37	0.41
1:A:469:LYS:HD2	1:A:469:LYS:HA	1.73	0.41
1:A:547:ARG:NH1	1:A:643:SER:HB2	2.36	0.41
1:A:570:MET:HE3	1:A:705:GLU:C	2.46	0.41
1:A:701:THR:HA	1:A:702:PRO:C	2.46	0.40
1:A:665:GLU:HB3	1:A:671:GLY:O	2.21	0.40
1:A:638:LEU:HD23	1:A:638:LEU:HA	1.84	0.40

There are no symmetry-related clashes.

5.3 Torsion angles [i](#)

5.3.1 Protein backbone [i](#)

In the following table, the Percentiles column shows the percent Ramachandran outliers of the chain as a percentile score with respect to all X-ray entries followed by that with respect to entries of similar resolution.

The Analysed column shows the number of residues for which the backbone conformation was analysed, and the total number of residues.

Mol	Chain	Analysed	Favoured	Allowed	Outliers	Percentiles
1	A	412/422 (98%)	386 (94%)	24 (6%)	2 (0%)	25 15

All (2) Ramachandran outliers are listed below:

Mol	Chain	Res	Type
1	A	514	ARG
1	A	617	ASP

5.3.2 Protein sidechains [i](#)

In the following table, the Percentiles column shows the percent sidechain outliers of the chain as a percentile score with respect to all X-ray entries followed by that with respect to entries of similar resolution.

The Analysed column shows the number of residues for which the sidechain conformation was analysed, and the total number of residues.

Mol	Chain	Analysed	Rotameric	Outliers	Percentiles
1	A	371/376 (99%)	348 (94%)	23 (6%)	15 4

All (23) residues with a non-rotameric sidechain are listed below:

Mol	Chain	Res	Type
1	A	300	PHE
1	A	321	THR
1	A	322	LEU
1	A	332	MET
1	A	340	GLN
1	A	341	HIS
1	A	348	VAL
1	A	352	ASP
1	A	354	LEU
1	A	368	SER
1	A	371	ARG
1	A	391	THR
1	A	419	ILE
1	A	455	LEU
1	A	469	LYS
1	A	516	ARG
1	A	523	LEU
1	A	609	GLU
1	A	621	THR
1	A	656	GLU
1	A	662	MET
1	A	699	ARG
1	A	713	THR

Sometimes sidechains can be flipped to improve hydrogen bonding and reduce clashes. All (6) such sidechains are listed below:

Mol	Chain	Res	Type
1	A	317	HIS
1	A	436	HIS
1	A	470	HIS
1	A	487	GLN
1	A	642	GLN
1	A	652	HIS

5.3.3 RNA ⓘ

There are no RNA molecules in this entry.

5.4 Non-standard residues in protein, DNA, RNA chains ⓘ

There are no non-standard protein/DNA/RNA residues in this entry.

5.5 Carbohydrates ⓘ

There are no oligosaccharides in this entry.

5.6 Ligand geometry ⓘ

Of 4 ligands modelled in this entry, 1 is monoatomic - leaving 3 for Mogul analysis.

In the following table, the Counts columns list the number of bonds (or angles) for which Mogul statistics could be retrieved, the number of bonds (or angles) that are observed in the model and the number of bonds (or angles) that are defined in the Chemical Component Dictionary. The Link column lists molecule types, if any, to which the group is linked. The Z score for a bond length (or angle) is the number of standard deviations the observed value is removed from the expected value. A bond length (or angle) with $|Z| > 2$ is considered an outlier worth inspection. RMSZ is the root-mean-square of all Z scores of the bond lengths (or angles).

Mol	Type	Chain	Res	Link	Bond lengths			Bond angles		
					Counts	RMSZ	$\# Z > 2$	Counts	RMSZ	$\# Z > 2$
4	A1CN9	A	803	-	30,30,30	0.57	0	39,43,43	1.49	7 (17%)
2	HEM	A	801	1	42,50,50	1.52	7 (16%)	46,82,82	1.61	10 (21%)
3	H4B	A	802	-	16,18,18	0.88	0	14,26,26	2.46	4 (28%)

In the following table, the Chirals column lists the number of chiral outliers, the number of chiral centers analysed, the number of these observed in the model and the number defined in the Chemical Component Dictionary. Similar counts are reported in the Torsion and Rings columns. '-' means no outliers of that kind were identified.

Mol	Type	Chain	Res	Link	Chirals	Torsions	Rings
4	A1CN9	A	803	-	-	5/10/22/22	0/3/3/3
2	HEM	A	801	1	-	2/12/54/54	-
3	H4B	A	802	-	-	0/8/17/17	0/2/2/2

All (7) bond length outliers are listed below:

Mol	Chain	Res	Type	Atoms	Z	Observed(Å)	Ideal(Å)
2	A	801	HEM	C3C-C2C	-3.49	1.35	1.40
2	A	801	HEM	CAB-C3B	3.15	1.55	1.47
2	A	801	HEM	C3C-CAC	3.12	1.54	1.47
2	A	801	HEM	C3C-C4C	2.95	1.45	1.41
2	A	801	HEM	FE-NB	2.92	2.14	1.98
2	A	801	HEM	CHA-C4D	2.42	1.40	1.34
2	A	801	HEM	CMB-C2B	2.31	1.55	1.50

All (21) bond angle outliers are listed below:

Mol	Chain	Res	Type	Atoms	Z	Observed(°)	Ideal(°)
3	A	802	H4B	C8A-C4A-C4	6.40	120.33	114.50
2	A	801	HEM	CBA-CAA-C2A	-4.12	105.61	112.54
4	A	803	A1CN9	C25-C24-C23	-3.95	110.41	114.33
3	A	802	H4B	C2-N3-C4	3.31	120.57	115.96
2	A	801	HEM	C3B-C4B-NB	-3.20	107.17	109.47
2	A	801	HEM	C4B-CHC-C1C	3.19	126.76	122.56
3	A	802	H4B	N1-C2-N3	-3.06	120.79	125.48
4	A	803	A1CN9	C08-C06-C05	-3.01	116.81	121.30
4	A	803	A1CN9	C08-C06-N01	2.83	121.39	115.69
4	A	803	A1CN9	O09-C08-C06	-2.64	102.27	109.56
4	A	803	A1CN9	C25-C26-N21	-2.62	108.48	111.16
3	A	802	H4B	C2-N1-C8A	2.53	120.59	114.59
2	A	801	HEM	CMC-C2C-C3C	2.44	129.56	124.68
4	A	803	A1CN9	F28-C24-F27	2.38	110.63	105.34
2	A	801	HEM	C1B-NB-C4B	2.34	107.98	105.21
2	A	801	HEM	C4D-ND-C1D	2.33	107.97	105.21
2	A	801	HEM	CHC-C4B-C3B	2.29	128.08	124.57
4	A	803	A1CN9	O09-C11-C12	2.28	119.36	115.92
2	A	801	HEM	CAD-CBD-CGD	-2.06	108.20	113.67
2	A	801	HEM	O1D-CGD-CBD	-2.06	116.56	123.09
2	A	801	HEM	O2D-CGD-CBD	2.06	120.50	114.00

There are no chirality outliers.

All (7) torsion outliers are listed below:

Mol	Chain	Res	Type	Atoms
4	A	803	A1CN9	C17-C18-N21-C22
2	A	801	HEM	C2A-CAA-CBA-CGA
4	A	803	A1CN9	C14-C15-C17-C18
4	A	803	A1CN9	C16-C15-C17-C18
4	A	803	A1CN9	C12-C11-O09-C08

Continued on next page...

Continued from previous page...

Mol	Chain	Res	Type	Atoms
4	A	803	A1CN9	C15-C17-C18-N21
2	A	801	HEM	CAD-CBD-CGD-O1D

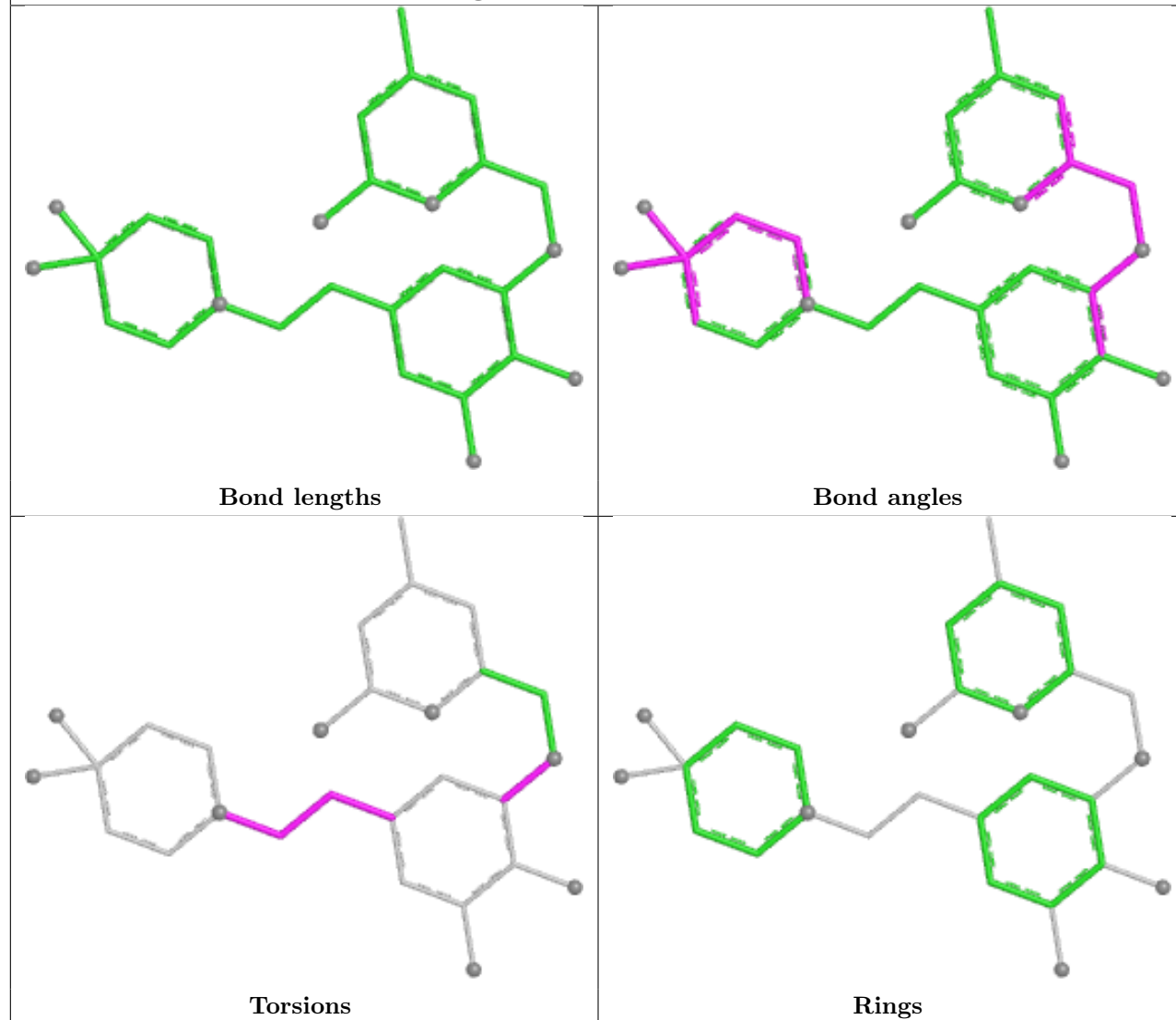
There are no ring outliers.

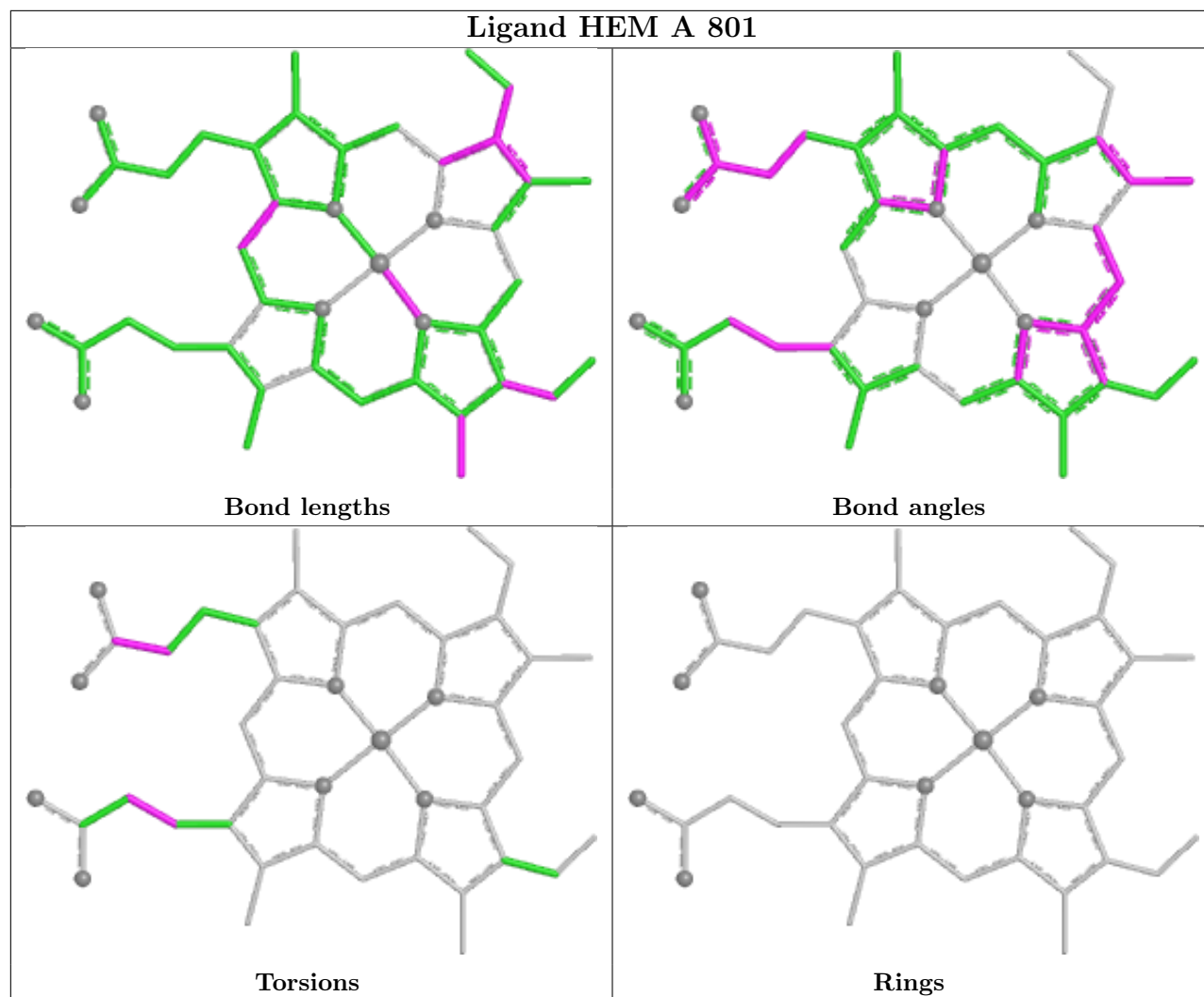
2 monomers are involved in 5 short contacts:

Mol	Chain	Res	Type	Clashes	Symm-Clashes
4	A	803	A1CN9	2	0
2	A	801	HEM	3	0

The following is a two-dimensional graphical depiction of Mogul quality analysis of bond lengths, bond angles, torsion angles, and ring geometry for all instances of the Ligand of Interest. In addition, ligands with molecular weight > 250 and outliers as shown on the validation Tables will also be included. For torsion angles, if less than 5% of the Mogul distribution of torsion angles is within 10 degrees of the torsion angle in question, then that torsion angle is considered an outlier. Any bond that is central to one or more torsion angles identified as an outlier by Mogul will be highlighted in the graph. For rings, the root-mean-square deviation (RMSD) between the ring in question and similar rings identified by Mogul is calculated over all ring torsion angles. If the average RMSD is greater than 60 degrees and the minimal RMSD between the ring in question and any Mogul-identified rings is also greater than 60 degrees, then that ring is considered an outlier. The outliers are highlighted in purple. The color gray indicates Mogul did not find sufficient equivalents in the CSD to analyse the geometry.

Ligand A1CN9 A 803





5.7 Other polymers [i](#)

There are no such residues in this entry.

5.8 Polymer linkage issues [i](#)

There are no chain breaks in this entry.

6 Fit of model and data [i](#)

6.1 Protein, DNA and RNA chains [i](#)

In the following table, the column labelled ‘#RSRZ > 2’ contains the number (and percentage) of RSRZ outliers, followed by percent RSRZ outliers for the chain as percentile scores relative to all X-ray entries and entries of similar resolution. The OWAB column contains the minimum, median, 95th percentile and maximum values of the occupancy-weighted average B-factor per residue. The column labelled ‘Q < 0.9’ lists the number of (and percentage) of residues with an average occupancy less than 0.9.

Mol	Chain	Analysed	<RSRZ>	#RSRZ>2	OWAB(Å ²)	Q<0.9
1	A	414/422 (98%)	0.33	5 (1%) 76 79	46, 84, 143, 197	2 (0%)

All (5) RSRZ outliers are listed below:

Mol	Chain	Res	Type	RSRZ
1	A	348	VAL	3.5
1	A	300	PHE	2.9
1	A	349	ALA	2.7
1	A	554	PHE	2.2
1	A	666	TYR	2.0

6.2 Non-standard residues in protein, DNA, RNA chains [i](#)

There are no non-standard protein/DNA/RNA residues in this entry.

6.3 Carbohydrates [i](#)

There are no oligosaccharides in this entry.

6.4 Ligands [i](#)

In the following table, the Atoms column lists the number of modelled atoms in the group and the number defined in the chemical component dictionary. The B-factors column lists the minimum, median, 95th percentile and maximum values of B factors of atoms in the group. The column labelled ‘Q < 0.9’ lists the number of atoms with occupancy less than 0.9.

Mol	Type	Chain	Res	Atoms	RSCC	RSR	B-factors(Å ²)	Q<0.9
4	A1CN9	A	803	28/28	0.85	0.13	51,102,133,138	0
3	H4B	A	802	17/17	0.94	0.08	49,55,60,62	0

Continued on next page...

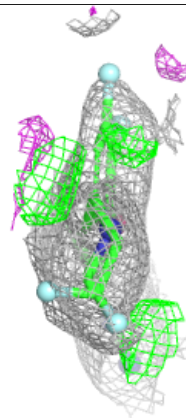
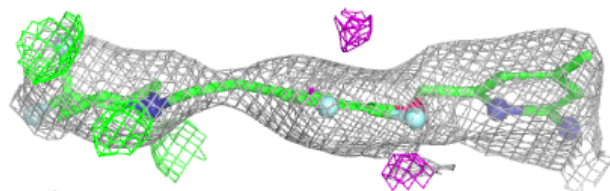
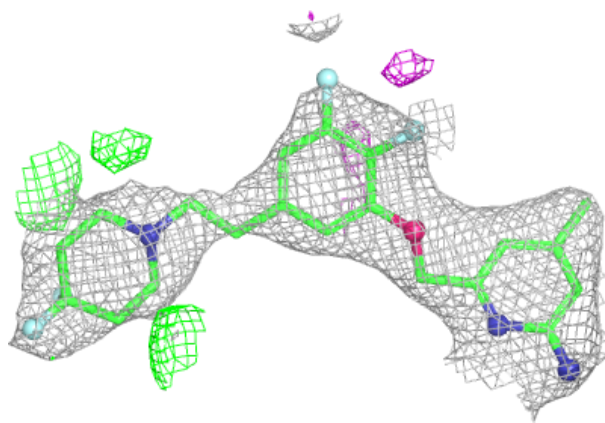
Continued from previous page...

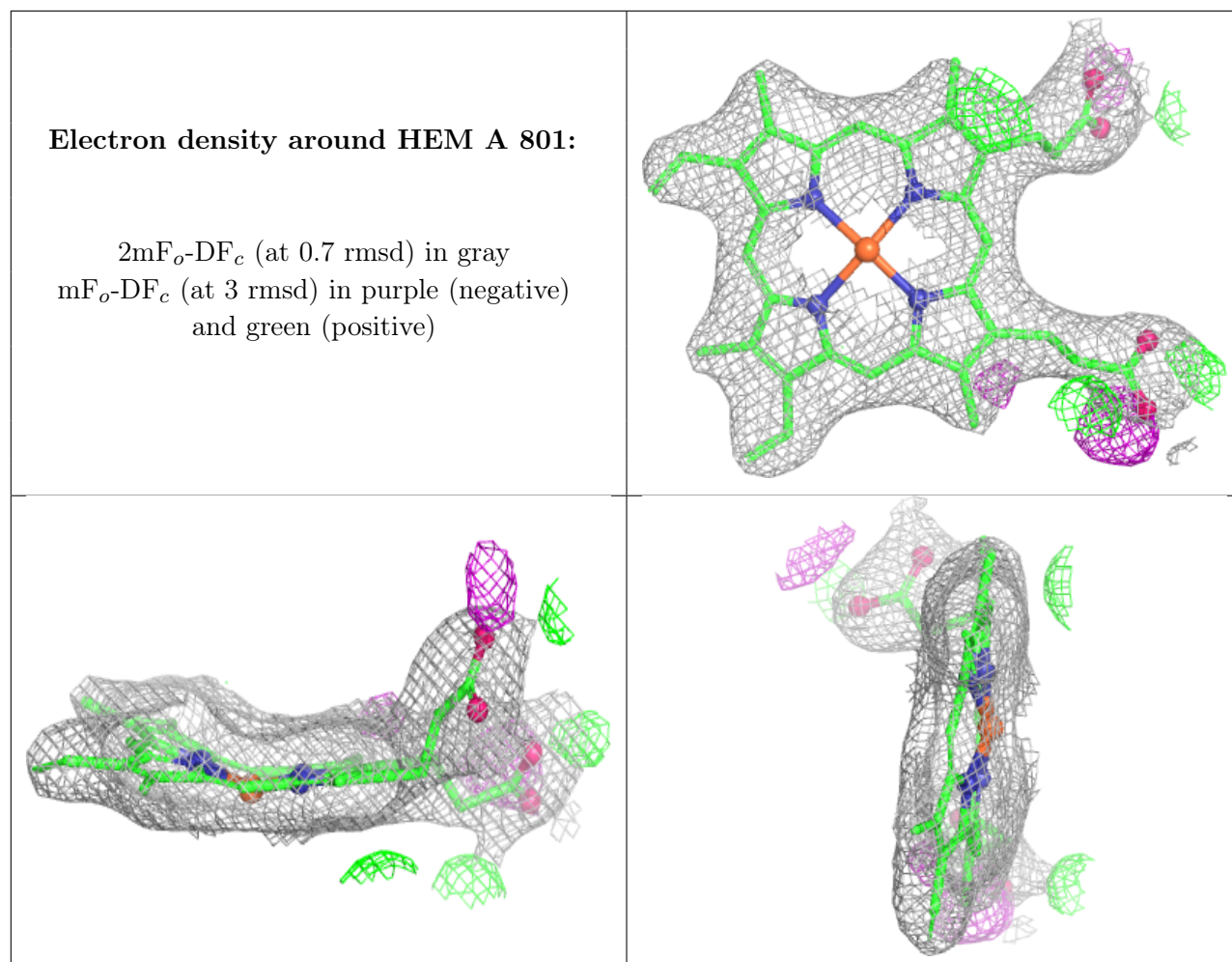
Mol	Type	Chain	Res	Atoms	RSCC	RSR	B-factors(\AA^2)	Q<0.9
2	HEM	A	801	43/43	0.96	0.09	45,63,72,83	0
5	ZN	A	804	1/1	0.99	0.10	47,47,47,47	1

The following is a graphical depiction of the model fit to experimental electron density of all instances of the Ligand of Interest. In addition, ligands with molecular weight > 250 and outliers as shown on the geometry validation Tables will also be included. Each fit is shown from different orientation to approximate a three-dimensional view.

Electron density around A1CN9 A 803:

2mF_o-DF_c (at 0.7 rmsd) in gray
mF_o-DF_c (at 3 rmsd) in purple (negative)
and green (positive)





6.5 Other polymers [i](#)

There are no such residues in this entry.