



Full wwPDB NMR Structure Validation Report ⓘ

Sep 11, 2025 – 10:18 AM EDT

PDB ID : 9PYT / pdb_00009pyt
BMRB ID : 31264
Title : NMR RDC refinement of the catalytic domain of the SARS-CoV-2 monomeric
Main Protease (MPROH41Q,10-306)
Authors : Smith, M.J.; Ying, J.; Shen, Y.; Louis, J.M.; Bax, A.
Deposited on : 2025-08-08

This is a Full wwPDB NMR Structure Validation Report for a publicly released PDB entry.

We welcome your comments at validation@mail.wwpdb.org

A user guide is available at

<https://www.wwpdb.org/validation/2017/NMRValidationReportHelp>

with specific help available everywhere you see the ⓘ symbol.

The types of validation reports are described at

<http://www.wwpdb.org/validation/2017/FAQs#types>.

The following versions of software and data (see [references ⓘ](#)) were used in the production of this report:

MolProbity : 4-5-2 with Phenix2.0rc1
Percentile statistics : 20231227.v01 (using entries in the PDB archive December 27th 2023)
wwPDB-RCI : v_1n_11_5_13_A (Berjanski et al., 2005)
PANAV : Wang et al. (2010)
wwPDB-ShiftChecker : v1.2
BMRB Restraints Analysis : v1.2
Ideal geometry (proteins) : Engh & Huber (2001)
Ideal geometry (DNA, RNA) : Parkinson et al. (1996)
Validation Pipeline (wwPDB-VP) : 2.45.1

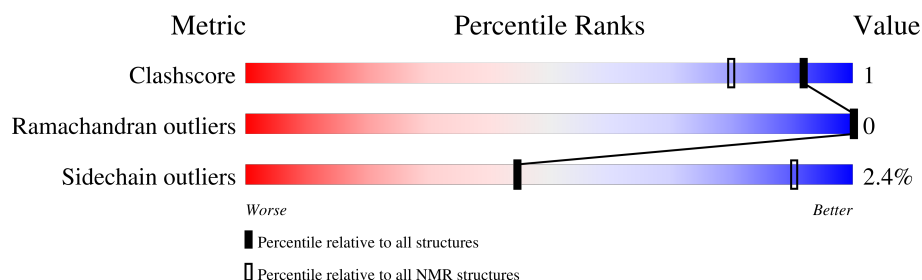
1 Overall quality at a glance

The following experimental techniques were used to determine the structure:

SOLUTION NMR

The overall completeness of chemical shifts assignment is 22%.

Percentile scores (ranging between 0-100) for global validation metrics of the entry are shown in the following graphic. The table shows the number of entries on which the scores are based.



Metric	Whole archive (#Entries)	NMR archive (#Entries)
Clashscore	210492	14027
Ramachandran outliers	207382	12486
Sidechain outliers	206894	12463

The table below summarises the geometric issues observed across the polymeric chains and their fit to the experimental data. The red, orange, yellow and green segments indicate the fraction of residues that contain outliers for ≥ 3 , 2, 1 and 0 types of geometric quality criteria. A cyan segment indicates the fraction of residues that are not part of the well-defined cores, and a grey segment represents the fraction of residues that are not modelled. The numeric value for each fraction is indicated below the corresponding segment, with a dot representing fractions $\leq 5\%$

Mol	Chain	Length	Quality of chain
1	A	306	

2 Ensemble composition and analysis

This entry contains 10 models. Model 6 is the overall representative, medoid model (most similar to other models). The authors have identified model 1 as representative, based on the following criterion: *lowest energy*.

The following residues are included in the computation of the global validation metrics.

Well-defined (core) protein residues			
Well-defined core	Residue range (total)	Backbone RMSD (Å)	Medoid model
1	A:12-A:184 (173)	0.16	6

Ill-defined regions of proteins are excluded from the global statistics.

Ligands and non-protein polymers are included in the analysis.

The models can be grouped into 2 clusters. No single-model clusters were found.

Cluster number	Models
1	1, 2, 3, 4, 5, 6, 7, 8
2	9, 10

3 Entry composition

There is only 1 type of molecule in this entry. The entry contains 2656 atoms, of which 1310 are hydrogens and 0 are deuteriums.

- Molecule 1 is a protein called 3C-like proteinase nsp5.

Mol	Chain	Residues	Atoms						Trace
1	A	175	Total	C	H	N	O	S	0
			2656	848	1310	230	252	16	

There is a discrepancy between the modelled and reference sequences:

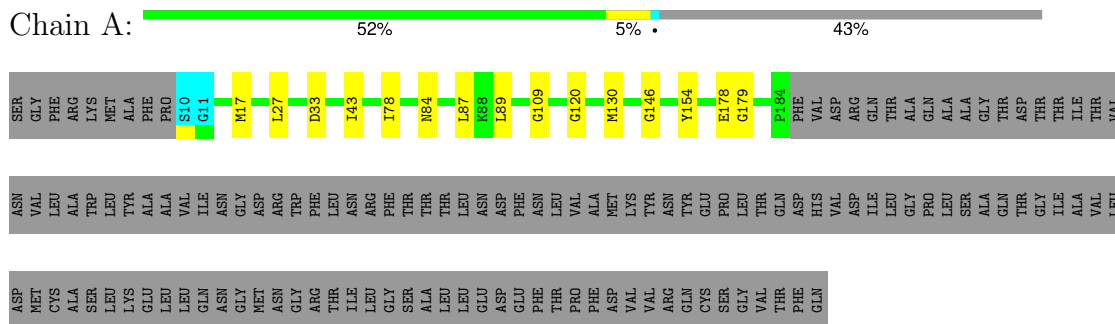
Chain	Residue	Modelled	Actual	Comment	Reference
A	41	GLN	HIS	engineered mutation	UNP P0DTD1

4 Residue-property plots

4.1 Average score per residue in the NMR ensemble

These plots are provided for all protein, RNA, DNA and oligosaccharide chains in the entry. The first graphic is the same as shown in the summary in section 1 of this report. The second graphic shows the sequence where residues are colour-coded according to the number of geometric quality criteria for which they contain at least one outlier: green = 0, yellow = 1, orange = 2 and red = 3 or more. Stretches of 2 or more consecutive residues without any outliers are shown as green connectors. Residues which are classified as ill-defined in the NMR ensemble, are shown in cyan with an underline colour-coded according to the previous scheme. Residues which were present in the experimental sample, but not modelled in the final structure are shown in grey.

- Molecule 1: 3C-like proteinase nsp5

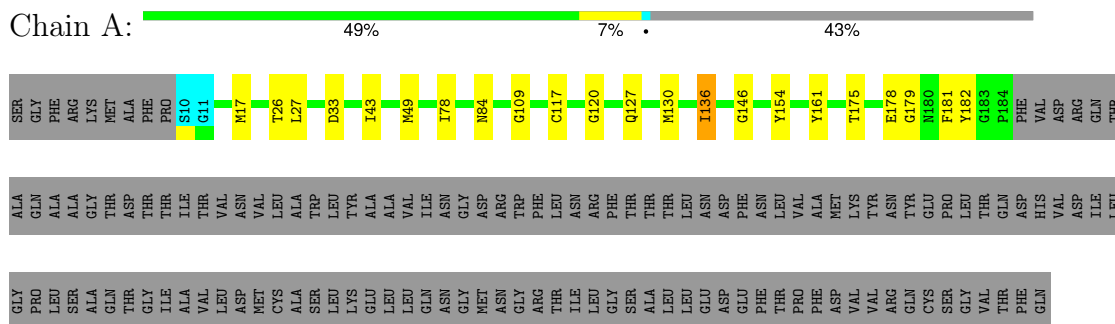


4.2 Scores per residue for each member of the ensemble

Colouring as in section 4.1 above.

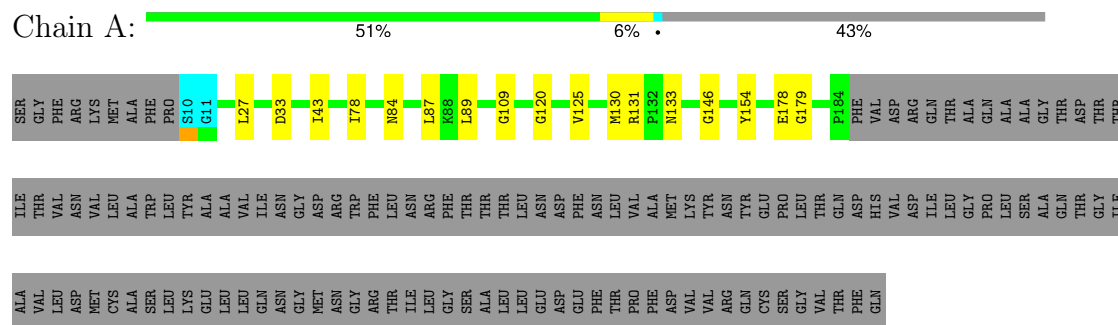
4.2.1 Score per residue for model 1

- Molecule 1: 3C-like proteinase nsp5



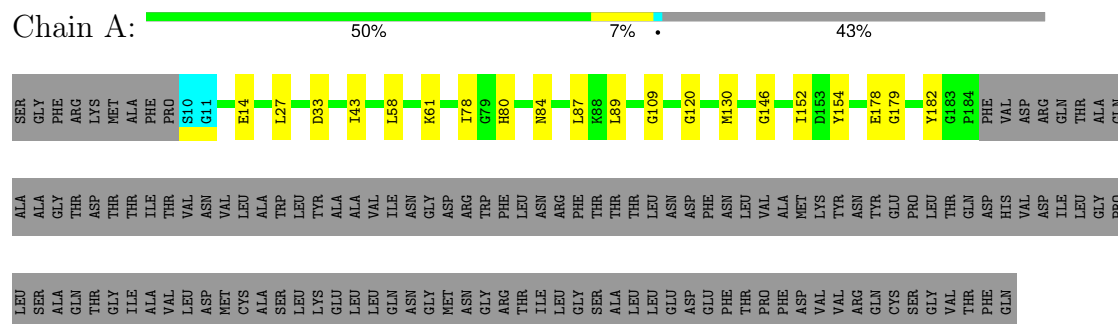
4.2.2 Score per residue for model 2

- Molecule 1: 3C-like proteinase nsp5



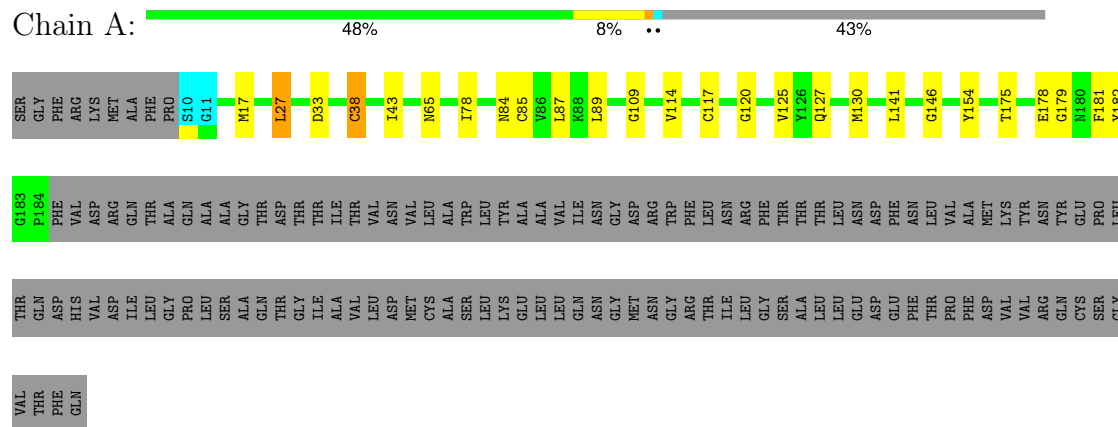
4.2.3 Score per residue for model 3

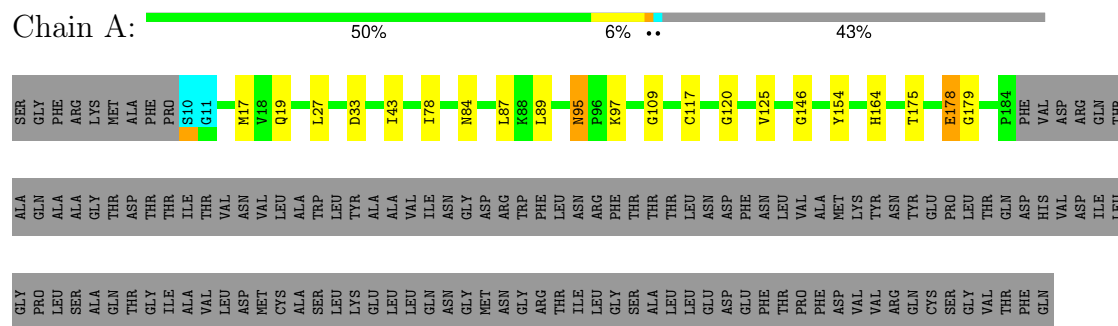
- Molecule 1: 3C-like proteinase nsp5



4.2.4 Score per residue for model 4

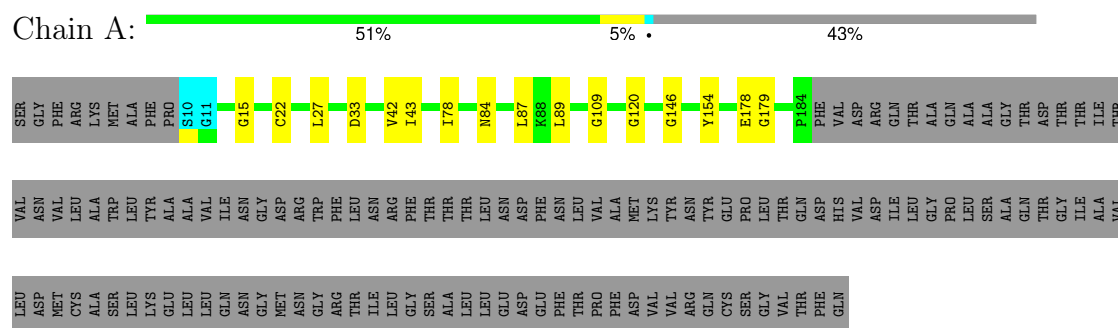
- Molecule 1: 3C-like proteinase nsp5





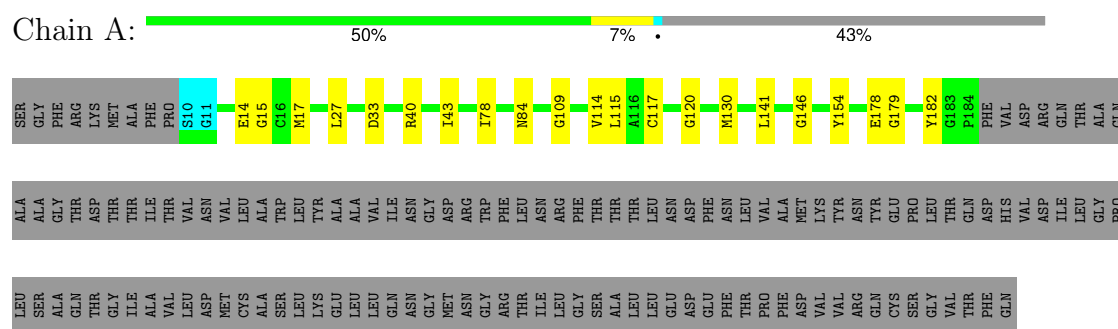
4.2.9 Score per residue for model 9

- Molecule 1: 3C-like proteinase nsp5



4.2.10 Score per residue for model 10

- Molecule 1: 3C-like proteinase nsp5



5 Refinement protocol and experimental data overview

The models were refined using the following method: *simulated annealing*.

Of the 10 calculated structures, 10 were deposited, based on the following criterion: *all calculated structures submitted*.

The following table shows the software used for structure solution, optimisation and refinement.

Software name	Classification	Version
X-PLOR NIH	refinement	

The following table shows chemical shift validation statistics as aggregates over all chemical shift files. Detailed validation can be found in section 7 of this report.

Chemical shift file(s)	working_cs.cif
Number of chemical shift lists	1
Total number of shifts	509
Number of shifts mapped to atoms	509
Number of unparsed shifts	0
Number of shifts with mapping errors	0
Number of shifts with mapping warnings	0
Assignment completeness (well-defined parts)	22%

6 Model quality [i](#)

6.1 Standard geometry [i](#)

The Z score for a bond length (or angle) is the number of standard deviations the observed value is removed from the expected value. A bond length (or angle) with $|Z| > 5$ is considered an outlier worth inspection. RMSZ is the (average) root-mean-square of all Z scores of the bond lengths (or angles).

Mol	Chain	Bond lengths		Bond angles	
		RMSZ	#Z>5	RMSZ	#Z>5
1	A	1.31±0.01	0±0/1367 (0.0± 0.0%)	1.23±0.01	9±0/1855 (0.5± 0.0%)
All	All	1.31	0/13670 (0.0%)	1.23	93/18550 (0.5%)

There are no bond-length outliers.

All unique angle outliers are listed below. They are sorted according to the Z-score of the worst occurrence in the ensemble.

Mol	Chain	Res	Type	Atoms	Z	Observed(°)	Ideal(°)	Models	
								Worst	Total
1	A	33	ASP	CB-CA-C	-6.81	108.73	116.63	1	10
1	A	84	ASN	CB-CA-C	-6.75	108.80	116.63	7	10
1	A	154	TYR	CB-CA-C	-6.10	108.94	117.23	2	10
1	A	109	GLY	N-CA-C	-6.09	107.84	115.08	5	10
1	A	146	GLY	N-CA-C	-5.88	107.20	115.32	1	10
1	A	78	ILE	N-CA-C	-5.79	107.62	113.47	5	10
1	A	178	GLU	N-CA-C	-5.75	105.93	113.17	7	10
1	A	179	GLY	N-CA-C	-5.58	107.54	115.30	5	10
1	A	120	GLY	N-CA-C	-5.32	108.29	115.21	5	10
1	A	15	GLY	N-CA-C	-5.16	108.99	114.67	10	3

There are no chirality outliers.

There are no planarity outliers.

6.2 Too-close contacts [i](#)

In the following table, the Non-H and H(model) columns list the number of non-hydrogen atoms and hydrogen atoms in each chain respectively. The H(added) column lists the number of hydrogen atoms added and optimized by MolProbity. The Clashes column lists the number of clashes averaged over the ensemble.

Mol	Chain	Non-H	H(model)	H(added)	Clashes
1	A	1336	1302	1302	4±1

Continued on next page...

Continued from previous page...

Mol	Chain	Non-H	H(model)	H(added)	Clashes
All	All	13360	13020	13020	38

The all-atom clashscore is defined as the number of clashes found per 1000 atoms (including hydrogen atoms). The all-atom clashscore for this structure is 1.

All unique clashes are listed below, sorted by their clash magnitude.

Atom-1	Atom-2	Clash(Å)	Distance(Å)	Models	
				Worst	Total
1:A:95:ASN:HD22	1:A:97:LYS:H	0.69	1.30	8	1
1:A:85:CYS:SG	1:A:175:THR:HG21	0.68	2.29	4	1
1:A:114:VAL:HG11	1:A:141:LEU:HD21	0.66	1.67	6	3
1:A:130:MET:HE1	1:A:182:TYR:CD1	0.59	2.32	10	5
1:A:17:MET:HE2	1:A:117:CYS:SG	0.56	2.41	5	5
1:A:17:MET:HE2	1:A:28:ASN:HD22	0.50	1.65	7	1
1:A:27:LEU:HD13	1:A:38:CYS:SG	0.49	2.46	4	1
1:A:175:THR:HG22	1:A:181:PHE:HA	0.47	1.86	5	3
1:A:58:LEU:HD11	1:A:80:HIS:ND1	0.46	2.25	3	1
1:A:22:CYS:HB3	1:A:42:VAL:HG22	0.45	1.89	9	2
1:A:87:LEU:CD2	1:A:89:LEU:HD21	0.44	2.42	8	8
1:A:87:LEU:HD21	1:A:89:LEU:HD21	0.44	1.88	8	3
1:A:131:ARG:HG3	1:A:133:ASN:H	0.43	1.74	2	1
1:A:136:ILE:HD11	1:A:161:TYR:CE1	0.43	2.49	1	1
1:A:164:HIS:CD2	1:A:175:THR:HG23	0.42	2.50	8	1
1:A:14:GLU:HG2	1:A:115:LEU:HD21	0.41	1.91	10	1

6.3 Torsion angles ⓘ

6.3.1 Protein backbone ⓘ

In the following table, the Percentiles column shows the percent Ramachandran outliers of the chain as a percentile score with respect to all PDB entries followed by that with respect to all NMR entries. The Analysed column shows the number of residues for which the backbone conformation was analysed and the total number of residues.

Mol	Chain	Analysed	Favoured	Allowed	Outliers	Percentiles	
1	A	172/306 (56%)	165±0 (96±0%)	7±0 (4±0%)	0±0 (0±0%)	100	100
All	All	1720/3060 (56%)	1654 (96%)	66 (4%)	0 (0%)	100	100

There are no Ramachandran outliers.

6.3.2 Protein sidechains [i](#)

In the following table, the Percentiles column shows the percent sidechain outliers of the chain as a percentile score with respect to all PDB entries followed by that with respect to all NMR entries. The Analysed column shows the number of residues for which the sidechain conformation was analysed and the total number of residues.

Mol	Chain	Analysed	Rotameric	Outliers	Percentiles	
1	A	152/263 (58%)	148±1 (98±1%)	4±1 (2±1%)	45	90
All	All	1520/2630 (58%)	1483 (98%)	37 (2%)	45	90

All 16 unique residues with a non-rotameric sidechain are listed below. They are sorted by the frequency of occurrence in the ensemble.

Mol	Chain	Res	Type	Models (Total)
1	A	27	LEU	10
1	A	43	ILE	10
1	A	127	GLN	2
1	A	61	LYS	2
1	A	164	HIS	2
1	A	26	THR	1
1	A	49	MET	1
1	A	136	ILE	1
1	A	130	MET	1
1	A	14	GLU	1
1	A	38	CYS	1
1	A	65	ASN	1
1	A	19	GLN	1
1	A	95	ASN	1
1	A	178	GLU	1
1	A	40	ARG	1

6.3.3 RNA [i](#)

There are no RNA molecules in this entry.

6.4 Non-standard residues in protein, DNA, RNA chains [i](#)

There are no non-standard protein/DNA/RNA residues in this entry.

6.5 Carbohydrates [i](#)

There are no oligosaccharides in this entry.

6.6 Ligand geometry [i](#)

There are no ligands in this entry.

6.7 Other polymers [i](#)

There are no such molecules in this entry.

6.8 Polymer linkage issues [i](#)

There are no chain breaks in this entry.

7 Chemical shift validation [i](#)

The completeness of assignment taking into account all chemical shift lists is 22% for the well-defined parts and 22% for the entire structure.

7.1 Chemical shift list 1

File name: working_cs.cif

Chemical shift list name: *default_1*

7.1.1 Bookkeeping [i](#)

The following table shows the results of parsing the chemical shift list and reports the number of nuclei with statistically unusual chemical shifts.

Total number of shifts	509
Number of shifts mapped to atoms	509
Number of unparsed shifts	0
Number of shifts with mapping errors	0
Number of shifts with mapping warnings	0
Number of shift outliers (ShiftChecker)	0

7.1.2 Chemical shift referencing [i](#)

The following table shows the suggested chemical shift referencing corrections.

Nucleus	# values	Correction \pm precision, ppm	Suggested action
$^{13}\text{C}_\alpha$	134	0.15 ± 0.17	None needed (< 0.5 ppm)
$^{13}\text{C}_\beta$	103	1.15 ± 0.17	Should be checked
$^{13}\text{C}'$	0	—	None (insufficient data)
^{15}N	136	-0.01 ± 0.36	None needed (< 0.5 ppm)

7.1.3 Completeness of resonance assignments [i](#)

The following table shows the completeness of the chemical shift assignments for the well-defined regions of the structure. The overall completeness is 22%, i.e. 509 atoms were assigned a chemical shift out of a possible 2277. 0 out of 31 assigned methyl groups (LEU and VAL) were assigned stereospecifically.

	Total	^1H	^{13}C	^{15}N
Backbone	406/863 (47%)	136/353 (39%)	134/346 (39%)	136/164 (83%)
Sidechain	103/1215 (8%)	0/793 (0%)	103/378 (27%)	0/44 (0%)

Continued on next page...

Continued from previous page...

	Total	¹ H	¹³ C	¹⁵ N
Aromatic	0/199 (0%)	0/98 (0%)	0/95 (0%)	0/6 (0%)
Overall	509/2277 (22%)	136/1244 (11%)	237/819 (29%)	136/214 (64%)

The following table shows the completeness of the chemical shift assignments for the full structure. The overall completeness is 22%, i.e. 509 atoms were assigned a chemical shift out of a possible 2291. 0 out of 31 assigned methyl groups (LEU and VAL) were assigned stereospecifically.

	Total	¹ H	¹³ C	¹⁵ N
Backbone	406/874 (46%)	136/358 (38%)	134/350 (38%)	136/166 (82%)
Sidechain	103/1218 (8%)	0/795 (0%)	103/379 (27%)	0/44 (0%)
Aromatic	0/199 (0%)	0/98 (0%)	0/95 (0%)	0/6 (0%)
Overall	509/2291 (22%)	136/1251 (11%)	237/824 (29%)	136/216 (63%)

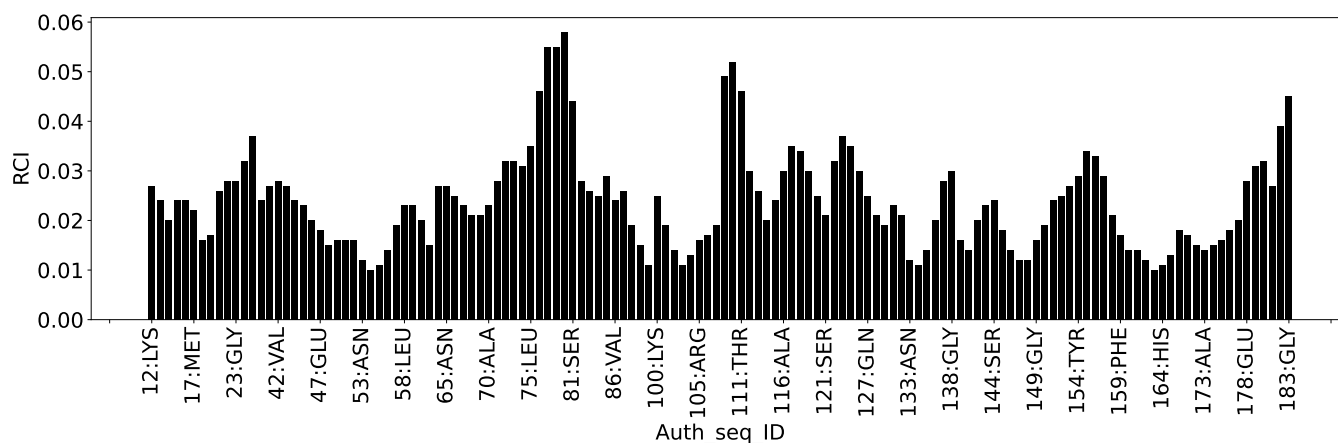
7.1.4 Statistically unusual chemical shifts [i](#)

There are no statistically unusual chemical shifts.

7.1.5 Random Coil Index (RCI) plots [i](#)

The image below reports *random coil index* values for the protein chains in the structure. The height of each bar gives a probability of a given residue to be disordered, as predicted from the available chemical shifts and the amino acid sequence. A value above 0.2 is an indication of significant predicted disorder. The colour of the bar shows whether the residue is in the well-defined core (black) or in the ill-defined residue ranges (cyan), as described in section 2 on ensemble composition. If well-defined core and ill-defined regions are not identified then it is shown as gray bars.

Random coil index (RCI) for chain A:



8 NMR restraints analysis

No restraints data found

9 Distance violation analysis ⓘ

No distance restraints data found

10 Dihedral-angle violation analysis ⓘ

No dihedral-angle restraints found