



Full wwPDB EM Validation Report ⓘ

Sep 29, 2025 – 04:01 PM EDT

PDB ID : 9PB9 / pdb_00009pb9
EMDB ID : EMD-71458
Title : 21bin20S complex (NSF-alphaSNAP-2:1 syntaxin-1a:SNAP-25), non-hydrolyzing, class 8
Authors : White, K.I.; Brunger, A.T.
Deposited on : 2025-06-26
Resolution : 3.45 Å(reported)
Based on initial model : 6MDM

This is a Full wwPDB EM Validation Report for a publicly released PDB entry.

We welcome your comments at validation@mail.wwpdb.org

A user guide is available at

<https://www.wwpdb.org/validation/2017/EMValidationReportHelp>
with specific help available everywhere you see the ⓘ symbol.

The types of validation reports are described at

<http://www.wwpdb.org/validation/2017/FAQs#types>.

The following versions of software and data (see [references ⓘ](#)) were used in the production of this report:

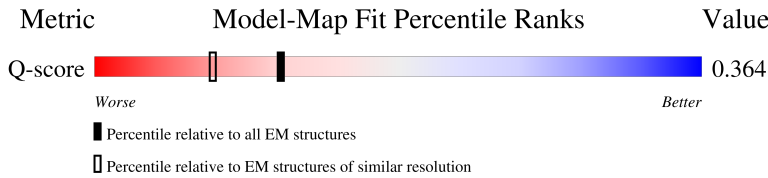
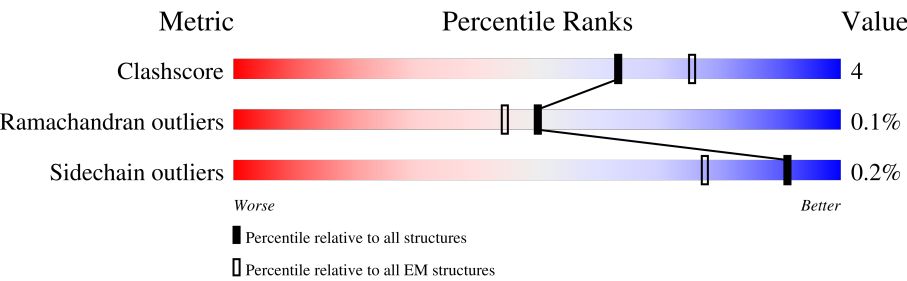
EMDB validation analysis : 0.0.1.dev129
Mogul : 2022.3.0, CSD as543be (2022)
MolProbity : 4-5-2 with Phenix2.0
buster-report : 1.1.7 (2018)
Percentile statistics : 20231227.v01 (using entries in the PDB archive December 27th 2023)
EM percentile statistics : 202505.v01 (Using data in the EMDB archive up until May 2025)
MapQ : 1.9.13
Ideal geometry (proteins) : Engh & Huber (2001)
Ideal geometry (DNA, RNA) : Parkinson et al. (1996)
Validation Pipeline (wwPDB-VP) : 2.46

1 Overall quality at a glance

The following experimental techniques were used to determine the structure:
ELECTRON MICROSCOPY

The reported resolution of this entry is 3.45 Å.

Percentile scores (ranging between 0-100) for global validation metrics of the entry are shown in the following graphic. The table shows the number of entries on which the scores are based.



Metric	Whole archive (#Entries)	EM structures (#Entries)	Similar EM resolution (#Entries, resolution range(Å))
Clashscore	210492	15764	-
Ramachandran outliers	207382	16835	-
Sidechain outliers	206894	16415	-
Q-score	-	25397	13836 (2.95 - 3.95)

The table below summarises the geometric issues observed across the polymeric chains and their fit to the map. The red, orange, yellow and green segments of the bar indicate the fraction of residues that contain outliers for ≥ 3 , 2, 1 and 0 types of geometric quality criteria respectively. A grey segment represents the fraction of residues that are not modelled. The numeric value for each fraction is indicated below the corresponding segment, with a dot representing fractions $\leq 5\%$. The upper red bar (where present) indicates the fraction of residues that have poor fit to the EM map (all-atom inclusion $< 40\%$). The numeric value is given above the bar.

Mol	Chain	Length	Quality of chain
1	A	747	
1	B	747	
1	C	747	
1	D	747	

Continued on next page...

Continued from previous page...

Mol	Chain	Length	Quality of chain
1	E	747	<div><div></div><div>23%</div><div>90%</div><div>8%</div><div></div></div>
1	F	747	<div><div></div><div>62%</div><div>8%</div><div>30%</div><div></div></div>
2	G	267	<div><div></div><div>19%</div><div>21%</div><div>76%</div><div></div></div>
2	H	267	<div><div></div><div>19%</div><div>27%</div><div>69%</div><div></div></div>
3	I	222	<div><div></div><div>53%</div><div>58%</div><div>13%</div><div>29%</div><div></div></div>
4	J	296	<div><div></div><div>87%</div><div>90%</div><div>7%</div><div></div></div>
4	K	296	<div><div></div><div>66%</div><div>83%</div><div>10%</div><div>7%</div><div></div></div>
4	L	296	<div><div></div><div>84%</div><div>81%</div><div>11%</div><div>7%</div><div></div></div>

2 Entry composition

There are 7 unique types of molecules in this entry. The entry contains 82607 atoms, of which 41321 are hydrogens and 0 are deuteriums.

In the tables below, the AltConf column contains the number of residues with at least one atom in alternate conformation and the Trace column contains the number of residues modelled with at most 2 atoms.

- Molecule 1 is a protein called Vesicle-fusing ATPase.

Mol	Chain	Residues	Atoms						AltConf	Trace
1	A	533	Total	C	H	N	O	S	16	0
			8632	2684	4388	747	789	24		
1	B	726	Total	C	H	N	O	S	14	0
			11625	3628	5887	1003	1076	31		
1	C	726	Total	C	H	N	O	S	36	0
			11864	3699	6009	1025	1099	32		
1	D	726	Total	C	H	N	O	S	16	0
			11668	3638	5906	1010	1082	32		
1	E	726	Total	C	H	N	O	S	10	0
			11581	3611	5864	1002	1073	31		
1	F	523	Total	C	H	N	O	S	8	0
			8397	2616	4268	724	768	21		

There are 18 discrepancies between the modelled and reference sequences:

Chain	Residue	Modelled	Actual	Comment	Reference
A	-2	GLY	-	expression tag	UNP P18708
A	-1	ALA	-	expression tag	UNP P18708
A	0	HIS	-	expression tag	UNP P18708
B	-2	GLY	-	expression tag	UNP P18708
B	-1	ALA	-	expression tag	UNP P18708
B	0	HIS	-	expression tag	UNP P18708
C	-2	GLY	-	expression tag	UNP P18708
C	-1	ALA	-	expression tag	UNP P18708
C	0	HIS	-	expression tag	UNP P18708
D	-2	GLY	-	expression tag	UNP P18708
D	-1	ALA	-	expression tag	UNP P18708
D	0	HIS	-	expression tag	UNP P18708
E	-2	GLY	-	expression tag	UNP P18708
E	-1	ALA	-	expression tag	UNP P18708
E	0	HIS	-	expression tag	UNP P18708
F	-2	GLY	-	expression tag	UNP P18708
F	-1	ALA	-	expression tag	UNP P18708
F	0	HIS	-	expression tag	UNP P18708

- Molecule 2 is a protein called Syntaxin-1A.

Mol	Chain	Residues	Atoms						AltConf	Trace
2	G	63	Total	C	H	N	O	S	0	0
			1022	320	505	89	103	5		
2	H	82	Total	C	H	N	O	S	0	0
			1298	403	645	110	134	6		

- Molecule 3 is a protein called Synaptosomal-associated protein 25.

Mol	Chain	Residues	Atoms						AltConf	Trace
3	I	157	Total	C	H	N	O	S	0	0
			2464	738	1215	232	267	12		

There are 20 discrepancies between the modelled and reference sequences:

Chain	Residue	Modelled	Actual	Comment	Reference
I	-15	MET	-	expression tag	UNP P60881
I	-14	GLY	-	expression tag	UNP P60881
I	-13	SER	-	expression tag	UNP P60881
I	-12	SER	-	expression tag	UNP P60881
I	-11	HIS	-	expression tag	UNP P60881
I	-10	HIS	-	expression tag	UNP P60881
I	-9	HIS	-	expression tag	UNP P60881
I	-8	HIS	-	expression tag	UNP P60881
I	-7	HIS	-	expression tag	UNP P60881
I	-6	HIS	-	expression tag	UNP P60881
I	-5	SER	-	expression tag	UNP P60881
I	-4	GLN	-	expression tag	UNP P60881
I	-3	ASP	-	expression tag	UNP P60881
I	-2	PRO	-	expression tag	UNP P60881
I	-1	ASN	-	expression tag	UNP P60881
I	0	SER	-	expression tag	UNP P60881
I	85	ALA	CYS	conflict	UNP P60881
I	88	ALA	CYS	conflict	UNP P60881
I	90	ALA	CYS	conflict	UNP P60881
I	92	ALA	CYS	conflict	UNP P60881

- Molecule 4 is a protein called Alpha-soluble NSF attachment protein.

Mol	Chain	Residues	Atoms						AltConf	Trace
4	J	287	Total	C	H	N	O	S	0	0
			4467	1424	2212	375	438	18		

Continued on next page...

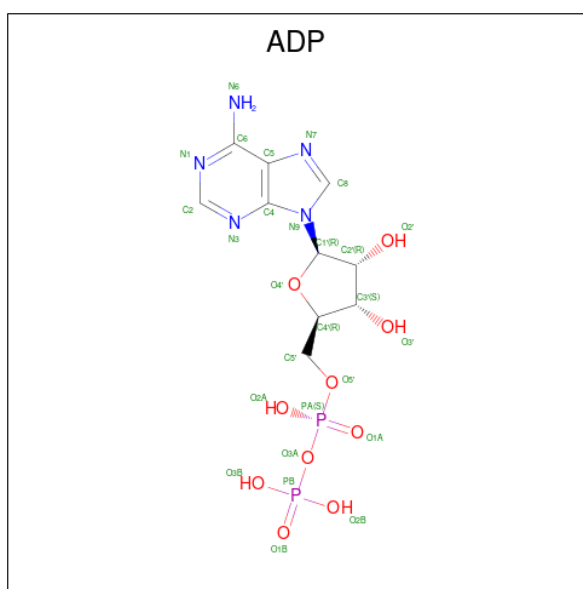
Continued from previous page...

Mol	Chain	Residues	Atoms						AltConf	Trace
4	K	276	Total	C	H	N	O	S	0	0
			4319	1373	2142	363	423	18		
4	L	275	Total	C	H	N	O	S	0	0
			4305	1368	2136	362	421	18		

There are 3 discrepancies between the modelled and reference sequences:

Chain	Residue	Modelled	Actual	Comment	Reference
J	0	GLY	-	expression tag	UNP P54921
K	0	GLY	-	expression tag	UNP P54921
L	0	GLY	-	expression tag	UNP P54921

- Molecule 5 is ADENOSINE-5'-DIPHOSPHATE (CCD ID: ADP) (formula: $C_{10}H_{15}N_5O_{10}P_2$) (labeled as "Ligand of Interest" by depositor).





Mol	Chain	Residues	Atoms						AltConf
6	A	1	Total 43	C 10	H 12	N 5	O 13	P 3	0
6	B	1	Total 43	C 10	H 12	N 5	O 13	P 3	0
6	B	1	Total 43	C 10	H 12	N 5	O 13	P 3	0
6	C	1	Total 43	C 10	H 12	N 5	O 13	P 3	0
6	C	1	Total 43	C 10	H 12	N 5	O 13	P 3	0
6	D	1	Total 43	C 10	H 12	N 5	O 13	P 3	0
6	D	1	Total 43	C 10	H 12	N 5	O 13	P 3	0
6	E	1	Total 43	C 10	H 12	N 5	O 13	P 3	0
6	E	1	Total 43	C 10	H 12	N 5	O 13	P 3	0
6	F	1	Total 43	C 10	H 12	N 5	O 13	P 3	0
6	F	1	Total 43	C 10	H 12	N 5	O 13	P 3	0

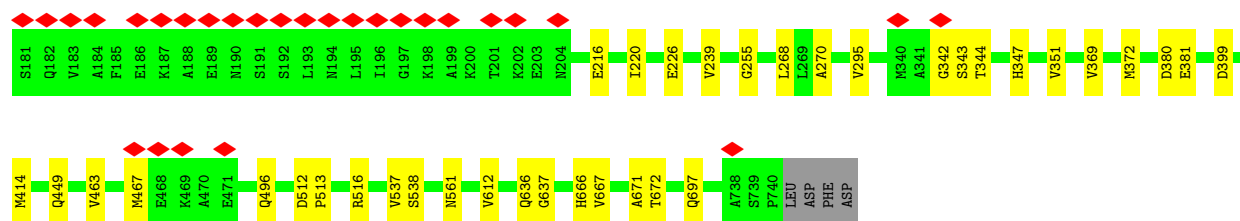
- Molecule 7 is water.

Mol	Chain	Residues	Atoms	AltConf
7	A	89	Total O 89 89	0

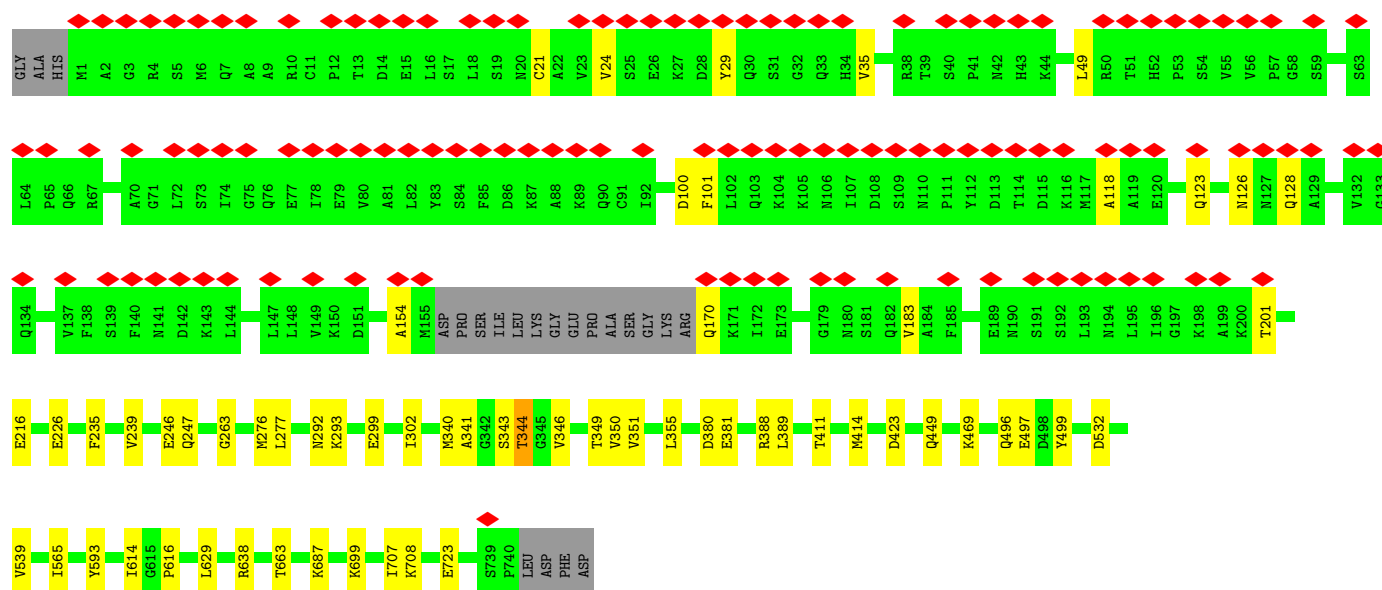
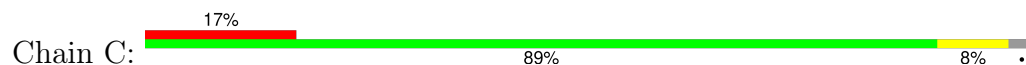
Continued on next page...

Continued from previous page...

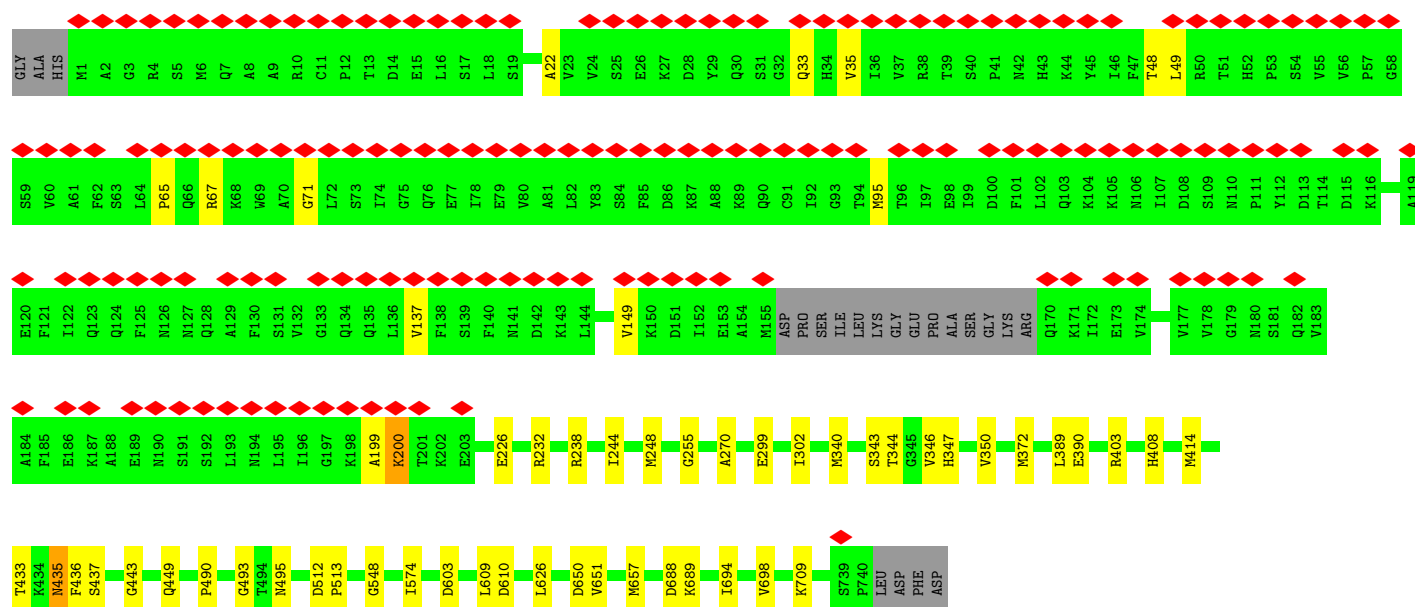
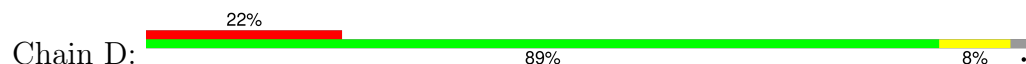
Mol	Chain	Residues	Atoms		AltConf
7	B	109	Total 109	O 109	0
7	C	115	Total 115	O 115	0
7	D	73	Total 73	O 73	0
7	E	50	Total 50	O 50	0
7	F	17	Total 17	O 17	0



• Molecule 1: Vesicle-fusing ATPase



• Molecule 1: Vesicle-fusing ATPase

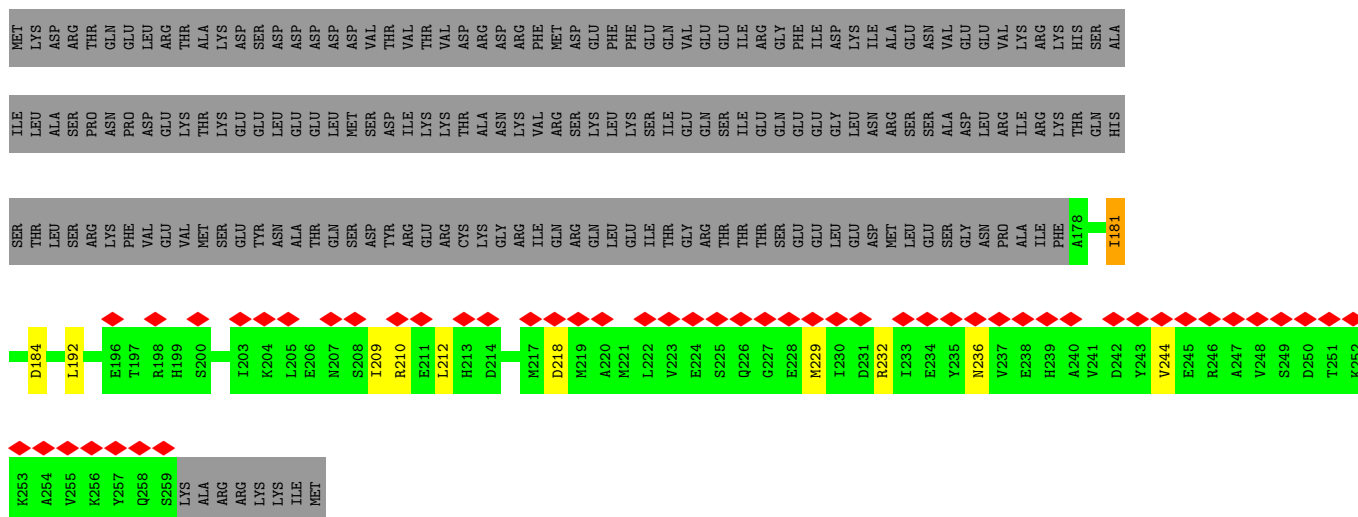


Chain E:

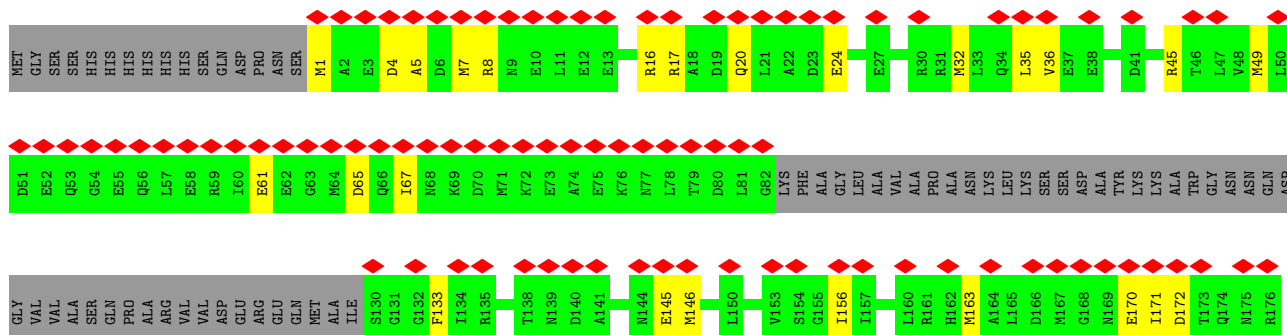
Chain F:

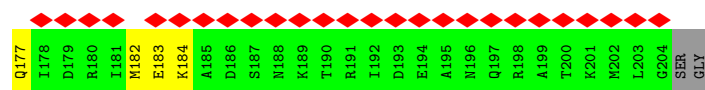
Chain G:

- Molecule 2: Syntaxin-1A

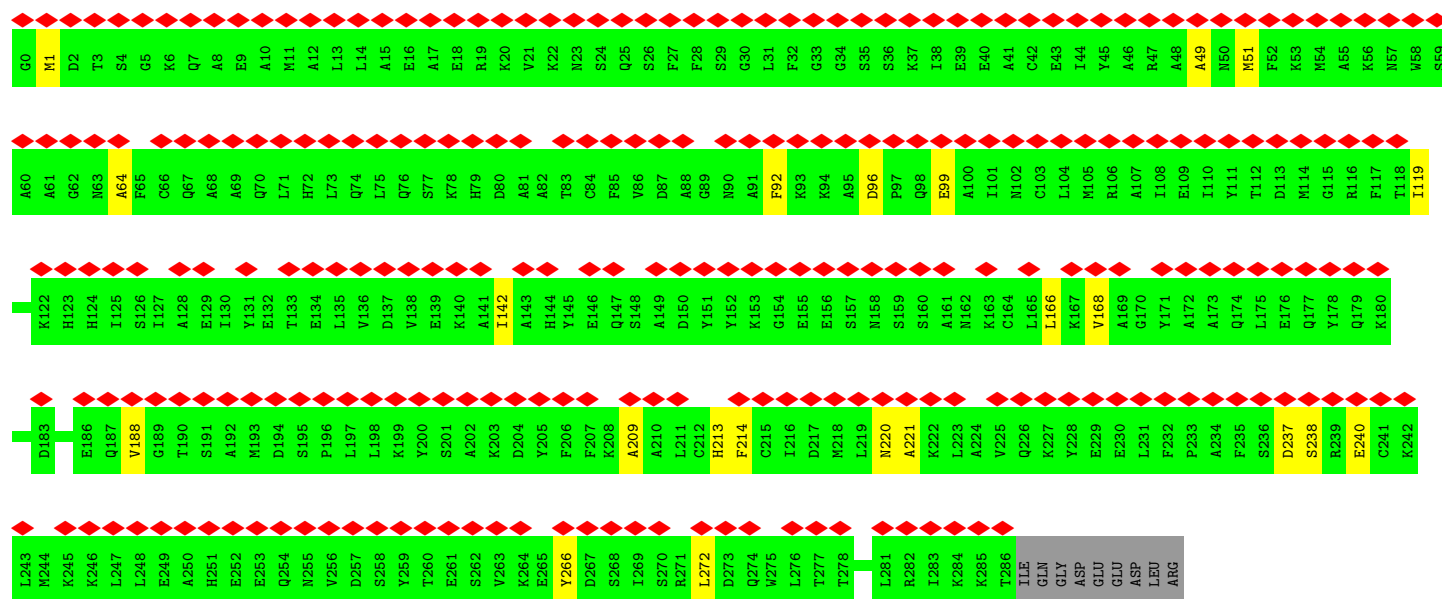
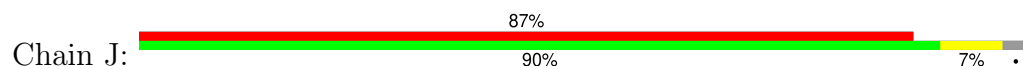


- Molecule 3: Synaptosomal-associated protein 25

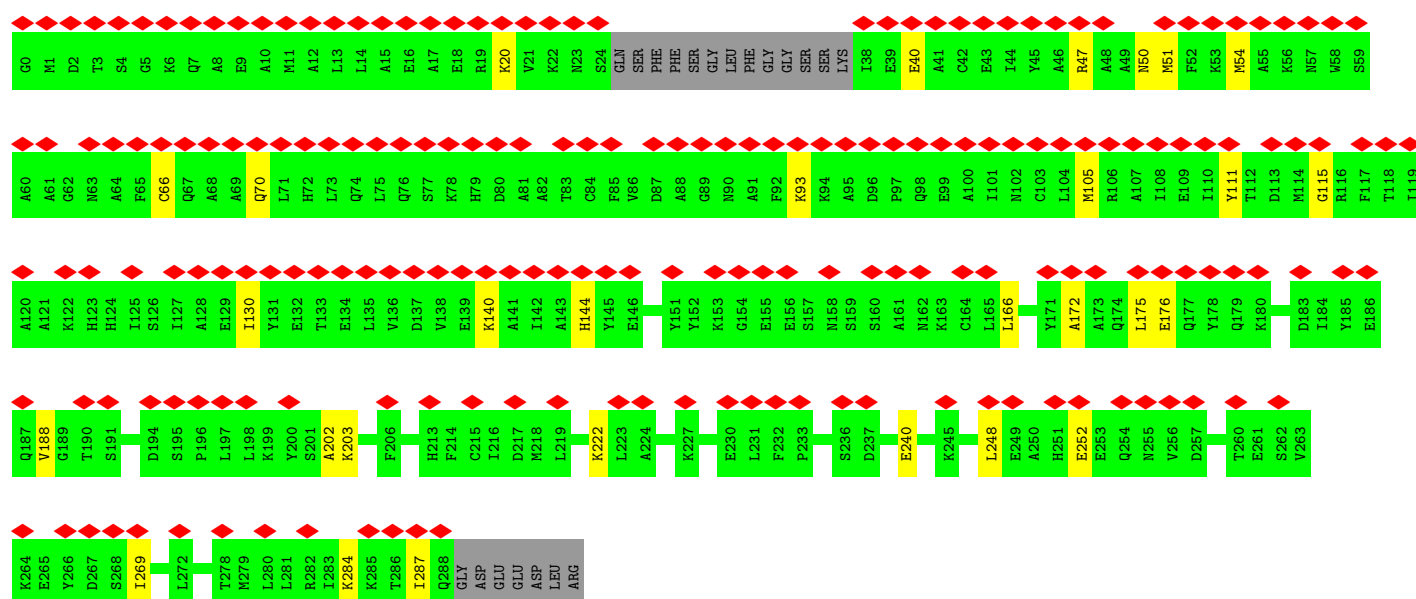
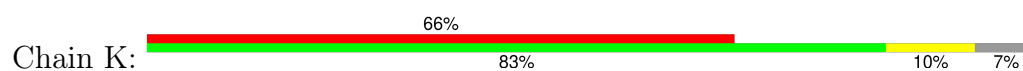




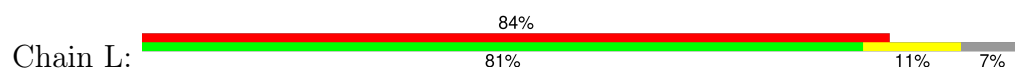
- Molecule 4: Alpha-soluble NSF attachment protein



- Molecule 4: Alpha-soluble NSF attachment protein



- Molecule 4: Alpha-soluble NSF attachment protein



L247	L248	E249	A250	H251	E252	E253	Q254	N255	V256	D257	S258	Y259	T260	E261	S262	V263	K264	E265	Y266	D267	S268	I269	S270	R271	L272	D273	Q274	W275	L276	T277	T278	M279	L280	L281	R282	I283	K284	K285	T286	ILE	GLN	GLY	ASP	GLU	GLU	ASP	LEU	ARG											
A181	I182	D183	I184	Y185	E186	Q187	V188	G189	T190	S191	A192	M193	D194	S195	P196	L197	Y200	S201	D204	Y205	F206	F207	K208	A209	A210	L211	C212	H213	F214	M218	A221	K222	L223	A224	V225	Q226	K227	Y228	E229	E230	L231	F232	P233	A234	F235	S236	D237	S238	R239	E240	C241	K242	K245	K246					
A120	A121	K122	H123	H124	I125	S126	I127	A128	E129	I130	Y131	E132	T133	E134	L135	V136	D137	V138	E139	K140	A141	I142	A143	H144	Y145	E146	Q147	S148	A149	D150	Y151	Y152	K153	G154	E155	E156	S157	N158	S159	S160	A161	N162	K163	C164	L165	L166	K167	V168	A169	G170	Y171	A172	A173	Q174	L175	E176	Q177	K180	
A60	A61	G62	N63	A64	F65	C66	Q67	A68	A69	Q70	L71	H72	L73	Q74	L75	Q76	S77	K78	H79	D80	A81	A82	T83	C84	F85	V86	D87	A88	S89	N90	A91	Y92	K93	K94	A95	D96	P97	Q98	E99	A100	I101	N102	C103	L104	M105	R106	A107	I108	E109	I110	Y111	T112	D113	M114	G115	R116	F117	T118	I119
G0	M1	D2	T3	S4	G5	K6	Q7	A8	E9	A10	M11	A12	L13	L14	A15	E16	A17	E18	R19	K20	V21	K22	N23	SER	GLN	SER	PHE	PHE	SER	GLY	LEU	PHE	GLY	GLY	SER	S36	K37	T38	E39	E40	A41	C42	E43	I44	Y45	A46	R47	A48	A49	N50	M51	F52	K53	M54	A55	K56	N57	M58	S59

4 Experimental information

Property	Value	Source
EM reconstruction method	SINGLE PARTICLE	Depositor
Imposed symmetry	POINT, Not provided	
Number of particles used	271729	Depositor
Resolution determination method	FSC 0.143 CUT-OFF	Depositor
CTF correction method	PHASE FLIPPING AND AMPLITUDE CORRECTION	Depositor
Microscope	TFS KRIOS	Depositor
Voltage (kV)	300	Depositor
Electron dose ($e^-/\text{\AA}^2$)	31.560, 36.760, 35.480	Depositor
Minimum defocus (nm)	1000	Depositor
Maximum defocus (nm)	3000	Depositor
Magnification	22500	Depositor
Image detector	GATAN K3 (6k x 4k), GATAN K3 (6k x 4k), GATAN K3 (6k x 4k)	Depositor
Maximum map value	4.200	Depositor
Minimum map value	-2.380	Depositor
Average map value	0.008	Depositor
Map value standard deviation	0.103	Depositor
Recommended contour level	0.3	Depositor
Map size (\AA)	322.224, 322.224, 322.224	wwPDB
Map dimensions	294, 294, 294	wwPDB
Map angles ($^\circ$)	90.0, 90.0, 90.0	wwPDB
Pixel spacing (\AA)	1.096, 1.096, 1.096	Depositor

5 Model quality [i](#)

5.1 Standard geometry [i](#)

Bond lengths and bond angles in the following residue types are not validated in this section: ADP, ATP

The Z score for a bond length (or angle) is the number of standard deviations the observed value is removed from the expected value. A bond length (or angle) with $|Z| > 5$ is considered an outlier worth inspection. RMSZ is the root-mean-square of all Z scores of the bond lengths (or angles).

Mol	Chain	Bond lengths		Bond angles	
		RMSZ	$\# Z > 5$	RMSZ	$\# Z > 5$
1	A	0.16	0/4362	0.33	0/5874
1	B	0.11	0/5873	0.27	0/7912
1	C	0.12	0/6043	0.29	0/8135
1	D	0.15	1/5901 (0.0%)	0.29	0/7946
1	E	0.13	0/5844	0.26	0/7872
1	F	0.09	0/4218	0.25	0/5679
2	G	0.13	0/523	0.26	0/700
2	H	0.13	0/659	0.30	0/882
3	I	0.15	0/1249	0.29	0/1662
4	J	0.09	0/2295	0.22	0/3084
4	K	0.09	0/2213	0.22	0/2975
4	L	0.08	0/2205	0.22	0/2963
All	All	0.12	1/41385 (0.0%)	0.27	0/55684

All (1) bond length outliers are listed below:

Mol	Chain	Res	Type	Atoms	Z	Observed(Å)	Ideal(Å)
1	D	443	GLY	C-N	-5.18	1.27	1.33

There are no bond angle outliers.

There are no chirality outliers.

There are no planarity outliers.

5.2 Too-close contacts [i](#)

In the following table, the Non-H and H(model) columns list the number of non-hydrogen atoms and hydrogen atoms in the chain respectively. The H(added) column lists the number of hydrogen atoms added and optimized by MolProbity. The Clashes column lists the number of clashes within the asymmetric unit, whereas Symm-Clashes lists symmetry-related clashes.

Mol	Chain	Non-H	H(model)	H(added)	Clashes	Symm-Clashes
1	A	4244	4388	4321	55	0
1	B	5738	5887	5835	37	0
1	C	5855	6009	5904	43	0
1	D	5762	5906	5850	42	0
1	E	5717	5864	5832	41	0
1	F	4129	4268	4226	39	0
2	G	517	505	505	7	0
2	H	653	645	644	14	0
3	I	1249	1215	1217	22	0
4	J	2255	2212	2212	14	0
4	K	2177	2142	2142	19	0
4	L	2169	2136	2136	20	0
5	A	27	12	12	0	0
6	A	31	12	12	1	0
6	B	62	24	24	0	0
6	C	62	24	24	1	0
6	D	62	24	24	1	0
6	E	62	24	24	1	0
6	F	62	24	24	1	0
7	A	89	0	0	2	0
7	B	109	0	0	1	0
7	C	115	0	0	0	0
7	D	73	0	0	3	0
7	E	50	0	0	2	0
7	F	17	0	0	0	0
All	All	41286	41321	40968	331	0

The all-atom clashscore is defined as the number of clashes found per 1000 atoms (including hydrogen atoms). The all-atom clashscore for this structure is 4.

All (331) close contacts within the same asymmetric unit are listed below, sorted by their clash magnitude.

Atom-1	Atom-2	Interatomic distance (Å)	Clash overlap (Å)
2:H:209:ILE:HD12	3:I:32:MET:HE2	1.62	0.81
1:B:295:VAL:HG22	2:H:181:ILE:HG23	1.65	0.79
1:E:299:GLU:N	1:E:299:GLU:OE1	2.17	0.76
4:J:92:PHE:O	4:J:96:ASP:N	2.20	0.74
4:J:213:HIS:NE2	4:J:220:ASN:OD1	2.20	0.74
1:D:299:GLU:N	1:D:299:GLU:OE1	2.20	0.74
1:B:414:MET:SD	1:B:449:GLN:NE2	2.61	0.74
1:C:340[B]:MET:SD	1:C:341[B]:ALA:N	2.62	0.72
1:E:248:MET:HE3	1:E:248:MET:O	1.91	0.71

Continued on next page...

Continued from previous page...

Atom-1	Atom-2	Interatomic distance (Å)	Clash overlap (Å)
1:B:697:GLN:N	1:B:697:GLN:OE1	2.24	0.70
2:G:230:ILE:HG23	2:H:229:MET:HE3	1.73	0.70
2:G:198:ARG:NH1	3:I:133:PHE:O	2.25	0.69
1:B:216:GLU:OE1	1:B:216:GLU:N	2.27	0.68
1:C:216:GLU:N	1:C:216:GLU:OE1	2.26	0.68
3:I:4:ASP:OD1	3:I:8:ARG:NH1	2.26	0.68
1:A:636[B]:GLN:OE1	1:A:636[B]:GLN:N	2.26	0.68
1:B:496:GLN:N	1:B:496:GLN:OE1	2.27	0.68
1:D:95:MET:HE1	1:D:149:VAL:HG13	1.74	0.68
1:B:226:GLU:N	1:B:226:GLU:OE1	2.26	0.67
1:F:382:ALA:O	1:F:388:ARG:NH1	2.27	0.67
1:F:344:THR:HG23	1:F:346:VAL:HG13	1.76	0.67
1:D:626:LEU:HD13	1:D:657:MET:HE1	1.77	0.66
1:D:232:ARG:NH2	7:D:902:HOH:O	2.29	0.65
1:B:295:VAL:HG22	2:H:181:ILE:CG2	2.26	0.65
4:K:66:CYS:O	4:K:70:GLN:NE2	2.30	0.65
1:B:671:ALA:O	1:B:672:THR:OG1	2.13	0.64
4:K:105:MET:HE3	4:K:105:MET:O	1.97	0.64
4:L:274:GLN:N	4:L:274:GLN:OE1	2.32	0.63
4:L:263:VAL:HG11	4:L:284:LYS:HE3	1.81	0.62
1:C:292:ASN:OD1	1:C:293:LYS:N	2.33	0.62
1:A:348:ASP:O	1:A:352:ASN:ND2	2.32	0.62
1:C:118:ALA:HB1	1:C:183:VAL:HG13	1.82	0.62
4:L:142:ILE:HG23	4:L:168:VAL:HG23	1.80	0.62
1:E:686:PHE:O	1:E:691:ARG:NH2	2.33	0.61
1:F:626:LEU:HD13	1:F:657:MET:HE1	1.82	0.61
1:C:411:THR:HG22	1:C:411:THR:O	2.00	0.61
1:F:694:ILE:O	1:F:698:VAL:HG22	2.01	0.61
1:F:736:GLU:OE1	1:F:736:GLU:N	2.34	0.60
2:H:232:ARG:O	2:H:236:ASN:ND2	2.34	0.60
4:J:237:ASP:OD1	4:J:238:SER:N	2.34	0.60
1:B:467:MET:HE3	1:B:467:MET:HA	1.83	0.60
1:E:400:GLU:N	1:E:400:GLU:OE1	2.34	0.60
1:E:493:GLY:O	1:E:494:THR:OG1	2.16	0.60
1:C:239:VAL:HG12	1:C:239:VAL:O	2.01	0.60
1:A:463:VAL:CG1	1:A:465:VAL:HG13	2.32	0.59
2:H:192:LEU:HD12	2:H:192:LEU:O	2.02	0.59
4:J:209:ALA:O	4:J:213:HIS:N	2.34	0.59
1:B:380:ASP:OD1	1:B:381[B]:GLU:N	2.34	0.59
1:F:214:ASN:OD1	1:F:217:LYS:N	2.35	0.59
1:E:656:GLU:OE2	1:F:648[A]:ARG:NH2	2.35	0.58

Continued on next page...

Continued from previous page...

Atom-1	Atom-2	Interatomic distance (Å)	Clash overlap (Å)
1:C:497:GLU:N	1:C:497:GLU:OE1	2.36	0.58
1:D:650:ASP:OD1	1:D:651:VAL:N	2.36	0.58
4:K:175:LEU:HD12	4:K:176:GLU:N	2.19	0.57
1:B:9:ALA:N	1:B:60:VAL:O	2.37	0.57
1:D:33:GLN:HB2	1:D:49:LEU:HD12	1.86	0.57
2:H:209:ILE:CG2	3:I:35:LEU:HD22	2.34	0.57
1:B:343:SER:O	1:B:344:THR:OG1	2.17	0.57
1:E:23:VAL:O	1:E:61:ALA:HB3	2.05	0.57
2:H:184:ASP:N	2:H:184:ASP:OD1	2.37	0.57
1:C:380:ASP:OD1	1:C:381:GLU:N	2.38	0.56
1:E:248:MET:HE1	1:F:414:MET:HG2	1.88	0.56
1:E:255:GLY:HA3	1:E:389:LEU:HD23	1.85	0.56
4:K:248:LEU:O	4:K:252:GLU:OE1	2.24	0.56
1:B:380:ASP:OD1	1:B:381[A]:GLU:N	2.36	0.56
4:K:20:LYS:NZ	4:K:40:GLU:OE2	2.35	0.56
1:E:650:ASP:OD1	1:E:650:ASP:N	2.37	0.56
4:L:237:ASP:O	4:L:242:LYS:NZ	2.39	0.56
1:B:667:VAL:HG23	1:B:667:VAL:O	2.06	0.55
1:D:67:ARG:O	1:D:71:GLY:N	2.39	0.55
1:D:403:ARG:NE	1:D:433:THR:O	2.39	0.55
1:F:342:GLY:O	1:F:343:SER:OG	2.19	0.55
1:B:399:ASP:OD1	1:B:399:ASP:N	2.39	0.55
1:E:674:GLU:OE1	1:E:674:GLU:N	2.36	0.55
1:B:636:GLN:C	1:B:636:GLN:OE1	2.50	0.55
2:G:230:ILE:HA	2:G:233:ILE:HG22	1.89	0.55
1:D:340[B]:MET:N	1:D:340[B]:MET:SD	2.80	0.54
1:D:244:ILE:HG22	1:D:248:MET:HE2	1.90	0.54
1:A:465:VAL:O	1:A:466:ASP:CB	2.56	0.54
1:D:302:ILE:HD11	1:D:350:VAL:HG13	1.89	0.54
1:A:311:GLU:OE2	1:A:312:GLU:N	2.41	0.54
4:L:240:GLU:N	4:L:240:GLU:OE1	2.39	0.54
1:B:100:ASP:OD1	1:B:101:PHE:N	2.40	0.53
1:C:302:ILE:CD1	1:C:350:VAL:HG13	2.38	0.53
1:A:659:ASN:OD1	1:A:659:ASN:C	2.51	0.53
1:C:614:ILE:O	1:C:616:PRO:HA	2.08	0.53
1:F:712:MET:HA	1:F:712:MET:HE2	1.90	0.53
1:C:699[A]:LYS:O	1:C:699[A]:LYS:NZ	2.32	0.53
1:E:681:GLU:OE1	1:E:691:ARG:NE	2.42	0.53
1:E:67:ARG:O	1:E:71:GLY:N	2.42	0.53
1:A:466:ASP:OD1	1:A:467:MET:N	2.41	0.53
1:C:302:ILE:HD11	1:C:350:VAL:HG13	1.91	0.53

Continued on next page...

Continued from previous page...

Atom-1	Atom-2	Interatomic distance (Å)	Clash overlap (Å)
4:L:52:PHE:CE1	4:L:60:ALA:HB3	2.43	0.53
4:L:166:LEU:HD21	4:L:188:VAL:HG11	1.91	0.53
1:D:35:VAL:HG13	1:D:49:LEU:HD11	1.90	0.52
1:F:614:ILE:O	1:F:616:PRO:HA	2.09	0.52
3:I:65:ASP:OD1	3:I:184:LYS:NZ	2.25	0.52
1:C:346[B]:VAL:HG12	1:C:346[B]:VAL:O	2.09	0.52
1:E:12:PRO:HD2	1:E:23:VAL:HG11	1.90	0.52
1:F:524:LEU:HD21	1:F:641:LEU:HD11	1.91	0.52
1:A:459:ALA:O	1:A:463:VAL:N	2.43	0.52
2:H:210:ARG:NH2	4:K:269:ILE:O	2.42	0.52
1:D:226:GLU:N	1:D:226:GLU:OE1	2.43	0.52
1:C:24:VAL:HG21	1:C:29:TYR:HB2	1.92	0.51
1:A:292:ASN:OD1	1:A:293:LYS:N	2.43	0.51
1:A:680:LEU:HD21	1:A:714:ILE:HD11	1.92	0.51
4:K:111:TYR:O	4:K:115:GLY:N	2.43	0.51
4:J:51:MET:HE3	4:J:51:MET:HA	1.91	0.51
1:E:283:LYS:NZ	1:E:305:LEU:O	2.41	0.51
1:F:532:ASP:OD1	1:F:532:ASP:N	2.40	0.51
4:K:93:LYS:HG3	4:K:130:ILE:HD12	1.92	0.51
1:A:487:ASP:C	1:A:488:ILE:HD13	2.35	0.51
1:D:709:LYS:NZ	7:D:904:HOH:O	2.43	0.51
4:L:207:PHE:CE2	4:L:211:LEU:HD11	2.46	0.51
1:A:463:VAL:HG12	1:A:465:VAL:HG13	1.93	0.50
1:A:348:ASP:O	1:A:348:ASP:OD1	2.30	0.50
1:B:516[A]:ARG:NH2	1:B:666:HIS:O	2.44	0.50
1:F:720:MET:SD	1:F:720:MET:N	2.80	0.50
1:E:297:GLU:CD	3:I:7:MET:HE1	2.37	0.50
3:I:163:MET:HA	3:I:163:MET:HE2	1.92	0.50
4:L:255:ASN:ND2	4:L:258:SER:OG	2.45	0.50
1:A:267:THR:HA	1:A:372:MET:HE1	1.93	0.50
1:D:270:ALA:CB	1:D:372:MET:HE2	2.42	0.50
1:D:390:GLU:OE2	1:E:446:ARG:NH1	2.45	0.50
1:E:455:ARG:NH1	7:E:903:HOH:O	2.45	0.50
1:A:738:ALA:O	1:A:739:SER:OG	2.28	0.50
1:E:220:ILE:HD11	1:E:272:GLN:HG3	1.93	0.50
1:C:723:GLU:N	1:C:723:GLU:OE1	2.43	0.49
4:K:51:MET:SD	4:K:51:MET:N	2.85	0.49
1:C:35:VAL:HG21	1:C:49:LEU:HD21	1.92	0.49
1:D:346:VAL:HG13	1:D:347:HIS:ND1	2.27	0.49
1:E:410:HIS:NE2	7:E:902:HOH:O	2.34	0.49
1:C:118:ALA:HB1	1:C:183:VAL:CG1	2.40	0.49

Continued on next page...

Continued from previous page...

Atom-1	Atom-2	Interatomic distance (Å)	Clash overlap (Å)
1:E:297:GLU:O	1:E:297:GLU:HG3	2.13	0.49
1:A:680:LEU:CD2	1:A:714:ILE:HD11	2.42	0.49
2:G:230:ILE:CG2	2:H:229:MET:HE3	2.40	0.49
1:B:39:THR:HG22	1:B:78:ILE:HG22	1.95	0.49
1:E:593:TYR:O	1:E:638:ARG:NH1	2.45	0.49
3:I:45:ARG:O	3:I:49:MET:HG2	2.13	0.49
4:K:172:ALA:O	4:K:176:GLU:N	2.44	0.49
1:A:399:ASP:OD1	1:A:399:ASP:N	2.45	0.49
1:B:31:SER:OG	1:B:51:THR:OG1	2.21	0.49
4:L:52:PHE:HE1	4:L:60:ALA:HB3	1.78	0.48
1:E:403:ARG:NH1	1:E:433:THR:O	2.45	0.48
1:C:539:VAL:HG23	1:C:663:THR:HG23	1.93	0.48
1:B:347:HIS:O	1:B:351:VAL:HG23	2.14	0.48
1:D:414:MET:HE2	1:D:449:GLN:HE21	1.78	0.48
3:I:1:MET:HB2	3:I:5:ALA:HB2	1.96	0.48
1:A:503:ILE:HD11	1:A:507:ILE:HD11	1.96	0.48
4:K:284:LYS:O	4:K:287:ILE:HG22	2.13	0.48
1:A:715:GLU:OE1	1:A:715:GLU:O	2.32	0.48
1:C:201:THR:O	1:C:201:THR:HG22	2.14	0.48
1:D:35:VAL:CG1	1:D:49:LEU:HD11	2.43	0.48
1:D:343:SER:O	1:D:344:THR:OG1	2.30	0.48
2:H:218:ASP:OD2	4:L:200:TYR:OH	2.29	0.48
1:C:100:ASP:OD1	1:C:101:PHE:N	2.47	0.48
4:J:240:GLU:OE1	4:J:240:GLU:N	2.43	0.48
1:A:272:GLN:NE2	7:A:908:HOH:O	2.39	0.47
1:A:512:ASP:N	1:A:513:PRO:CD	2.77	0.47
1:C:263:GLY:N	6:C:801:ATP:O2B	2.40	0.47
1:D:65:PRO:CG	1:D:137:VAL:HG13	2.44	0.47
1:F:344:THR:CG2	1:F:346:VAL:HG13	2.43	0.47
1:F:471:GLU:N	1:F:471:GLU:OE1	2.47	0.47
1:E:532:ASP:OD1	1:E:533:ARG:N	2.44	0.47
1:D:493:GLY:O	1:D:495:ASN:ND2	2.47	0.47
2:G:216:PHE:CE2	2:H:212:LEU:HD11	2.49	0.47
1:C:593:TYR:O	1:C:638:ARG:NH1	2.46	0.47
1:A:694:ILE:O	1:A:698:VAL:HG22	2.15	0.47
1:E:117:MET:SD	1:E:195:LEU:HD22	2.54	0.47
4:J:1:MET:SD	4:J:1:MET:C	2.97	0.47
1:B:342:GLY:O	1:B:344:THR:HG23	2.15	0.47
4:J:266:TYR:CE2	4:J:272:LEU:HD21	2.50	0.47
1:E:388:ARG:NH1	6:F:801:ATP:O3G	2.45	0.47
1:A:235:PHE:CD1	1:A:235:PHE:N	2.82	0.47

Continued on next page...

Continued from previous page...

Atom-1	Atom-2	Interatomic distance (Å)	Clash overlap (Å)
1:D:199:ALA:O	1:D:200:LYS:HB2	2.15	0.47
1:D:694:ILE:O	1:D:698:VAL:HG12	2.15	0.47
1:F:218:MET:O	1:F:220:ILE:HD12	2.15	0.47
1:F:344:THR:OG1	1:F:345:GLY:N	2.48	0.47
1:F:512:ASP:N	1:F:513:PRO:CD	2.78	0.47
4:J:99:GLU:OE1	4:J:99:GLU:N	2.44	0.46
1:A:348:ASP:OD1	1:A:352:ASN:ND2	2.48	0.46
1:D:436:PHE:HE1	1:D:490:PRO:HD3	1.80	0.46
1:E:423:ASP:OD1	1:E:423:ASP:C	2.58	0.46
1:F:313:GLN:NE2	1:F:366:ASN:OD1	2.49	0.46
1:F:461:THR:HG22	1:F:462:LYS:HE2	1.98	0.46
1:E:636:GLN:OE1	1:E:637:GLY:N	2.49	0.46
1:F:356:SER:O	1:F:360:GLY:N	2.49	0.46
4:K:47:ARG:O	4:K:51:MET:SD	2.73	0.46
1:B:561:ASN:ND2	7:B:908:HOH:O	2.40	0.46
1:D:65:PRO:HG2	1:D:137:VAL:HG13	1.98	0.46
1:D:414:MET:HE2	1:D:449:GLN:NE2	2.30	0.46
1:A:218:MET:HE2	1:A:272:GLN:HB3	1.98	0.46
1:A:465:VAL:HG23	1:A:466:ASP:N	2.31	0.46
1:E:100:ASP:OD1	1:E:101:PHE:N	2.49	0.46
1:E:540:LEU:HD11	1:E:646:THR:HG22	1.97	0.46
1:F:302:ILE:HD11	1:F:350:VAL:HG13	1.98	0.46
4:L:1:MET:HE3	4:L:1:MET:O	2.16	0.46
1:D:512:ASP:N	1:D:513:PRO:CD	2.78	0.45
1:C:235:PHE:CE1	1:C:277:LEU:HD11	2.50	0.45
1:E:248:MET:HE2	1:F:449:GLN:NE2	2.32	0.45
1:E:297:GLU:OE2	3:I:7:MET:HE1	2.16	0.45
1:A:548:GLY:N	6:A:802:ATP:O1B	2.47	0.45
1:F:421:SER:O	1:F:424:VAL:HG12	2.16	0.45
1:A:648[B]:ARG:NH2	1:F:656:GLU:OE2	2.49	0.45
1:F:427:LYS:HD3	1:F:427:LYS:N	2.32	0.45
1:E:207:SER:O	1:E:278:ASN:ND2	2.43	0.45
1:A:259:TYR:HA	1:A:373:THR:O	2.17	0.45
4:J:214:PHE:HA	4:J:221:ALA:HB2	1.97	0.45
1:D:255:GLY:HA3	1:D:389:LEU:HD23	1.99	0.45
1:A:663:THR:HG22	1:A:664:THR:N	2.31	0.44
4:K:175:LEU:HD12	4:K:176:GLU:H	1.80	0.44
4:L:214:PHE:CD1	4:L:283:ILE:HD11	2.52	0.44
1:A:463:VAL:HG12	1:A:464:GLU:N	2.33	0.44
1:C:246:GLU:OE2	1:C:247:GLN:N	2.49	0.44
1:C:411:THR:O	1:C:411:THR:CG2	2.65	0.44

Continued on next page...

Continued from previous page...

Atom-1	Atom-2	Interatomic distance (Å)	Clash overlap (Å)
1:F:419:LEU:C	1:F:419:LEU:HD12	2.42	0.44
3:I:20:GLN:NE2	3:I:24:GLU:OE2	2.50	0.44
4:K:166:LEU:HD21	4:K:188:VAL:HG11	1.99	0.44
4:K:222:LYS:HA	4:K:222:LYS:HE2	2.00	0.44
1:C:235:PHE:HE1	1:C:277:LEU:HD11	1.83	0.44
1:A:209:ILE:HG12	1:B:463:VAL:HG11	2.00	0.44
1:A:463:VAL:HG11	1:A:465:VAL:HG13	1.98	0.44
1:D:548:GLY:N	6:D:801:ATP:O1B	2.48	0.44
1:F:399:ASP:OD1	1:F:402:GLY:N	2.45	0.44
1:B:537:VAL:HG12	1:B:538:SER:N	2.33	0.44
2:G:233:ILE:HD13	3:I:182:MET:SD	2.58	0.44
1:D:199:ALA:O	1:D:200:LYS:CB	2.65	0.43
4:L:138:VAL:HG21	4:L:171:TYR:CD1	2.53	0.43
1:B:255:GLY:HA2	1:B:369:VAL:O	2.19	0.43
1:A:687:LYS:HG3	1:A:688:ASP:N	2.33	0.43
1:D:609:LEU:HD12	1:D:609:LEU:O	2.18	0.43
1:F:290:ILE:HG22	1:F:301:ASN:OD1	2.18	0.43
4:J:142:ILE:HD11	4:J:168:VAL:HA	2.00	0.43
4:K:140:LYS:O	4:K:144:HIS:ND1	2.51	0.43
1:C:123:GLN:O	1:C:126:ASN:ND2	2.43	0.43
4:K:240:GLU:OE1	4:K:240:GLU:N	2.50	0.43
4:L:182:ILE:HD12	4:L:213:HIS:HB2	2.00	0.43
1:C:299:GLU:OE2	1:C:349:THR:OG1	2.27	0.43
4:L:218:MET:HE1	4:L:248:LEU:HG	2.00	0.43
4:L:239:ARG:CZ	4:L:269:ILE:HG21	2.48	0.43
1:A:648[A]:ARG:NH1	7:A:910:HOH:O	2.51	0.43
1:E:189:GLU:OE1	1:E:189:GLU:N	2.49	0.43
1:E:494:THR:O	1:E:495:ASN:C	2.62	0.43
3:I:61:GLU:OE1	3:I:177:GLN:NE2	2.44	0.43
1:A:285:VAL:HG12	1:A:286:ASN:N	2.34	0.43
1:A:483:SER:OG	1:A:487:ASP:OD2	2.21	0.43
3:I:182:MET:O	3:I:183:GLU:C	2.62	0.43
1:A:686:PHE:O	1:A:691:ARG:NH1	2.52	0.43
1:C:629:LEU:CD1	1:D:574:ILE:HD13	2.49	0.43
1:F:524:LEU:CD2	1:F:641:LEU:HD11	2.49	0.43
3:I:16:ARG:O	3:I:17:ARG:C	2.61	0.42
3:I:145:GLU:O	3:I:146:MET:C	2.61	0.42
1:B:270:ALA:CB	1:B:372:MET:HE2	2.48	0.42
1:C:629:LEU:HD13	1:D:574:ILE:HD13	2.02	0.42
1:D:302:ILE:CD1	1:D:350:VAL:HG13	2.48	0.42
1:F:472:SER:O	1:F:473:LEU:C	2.62	0.42

Continued on next page...

Continued from previous page...

Atom-1	Atom-2	Interatomic distance (Å)	Clash overlap (Å)
1:A:255:GLY:CA	1:A:369:VAL:O	2.68	0.42
1:B:95:MET:HE1	1:B:97:ILE:HD11	2.00	0.42
1:B:612:VAL:HG13	1:B:612:VAL:O	2.19	0.42
1:A:503:ILE:O	1:A:503:ILE:HG22	2.19	0.42
1:D:436:PHE:CE1	1:D:490:PRO:HD3	2.54	0.42
6:E:802:ATP:N3	6:E:802:ATP:H2'	2.35	0.42
1:A:459:ALA:O	1:A:463:VAL:HG23	2.20	0.42
1:C:469:LYS:O	1:C:469:LYS:HG2	2.20	0.42
1:F:348:ASP:OD1	1:F:349:THR:N	2.52	0.42
4:K:50:ASN:O	4:K:54:MET:HG2	2.19	0.42
1:C:499:TYR:OH	1:C:565:ILE:HG21	2.20	0.42
1:A:698:VAL:O	1:A:698:VAL:HG23	2.18	0.42
1:C:343[B]:SER:O	1:C:344[B]:THR:OG1	2.31	0.42
1:D:22:ALA:N	1:D:48:THR:O	2.53	0.42
1:E:243:GLU:OE1	1:E:243:GLU:N	2.51	0.42
4:L:171:TYR:O	4:L:175:LEU:HG	2.21	0.41
1:A:448:ALA:O	1:A:451:THR:HG22	2.20	0.41
1:B:467:MET:HE3	1:B:467:MET:CA	2.49	0.41
1:D:238:ARG:NH1	7:D:906:HOH:O	2.53	0.41
1:D:270:ALA:HB2	1:D:372:MET:HE2	2.00	0.41
1:F:524:LEU:HD22	1:F:539:VAL:HG21	2.01	0.41
1:A:428:GLU:O	1:A:432:GLU:HG2	2.20	0.41
1:B:10:ARG:O	1:B:61:ALA:HB1	2.20	0.41
1:B:512:ASP:N	1:B:513:PRO:CD	2.83	0.41
1:E:193:LEU:HD11	1:E:195:LEU:HD21	2.02	0.41
1:C:35:VAL:HG11	1:C:49:LEU:HD11	2.02	0.41
1:C:388:ARG:O	1:C:389:LEU:C	2.62	0.41
2:G:219:MET:O	2:G:223:VAL:HG23	2.20	0.41
3:I:35:LEU:HD23	3:I:35:LEU:C	2.45	0.41
1:A:267:THR:CA	1:A:372:MET:HE1	2.51	0.41
1:A:240:PHE:HE2	1:A:244:ILE:HG21	1.85	0.41
1:C:154:ALA:N	1:C:170:GLN:O	2.50	0.41
1:F:454:ASN:HA	1:F:457:ILE:HG22	2.02	0.41
2:H:209:ILE:HG22	3:I:35:LEU:HD22	2.02	0.41
3:I:171:ILE:O	3:I:172:ASP:C	2.63	0.41
4:J:119:ILE:H	4:J:119:ILE:HD12	1.86	0.41
1:A:375[A]:ARG:NH2	1:A:377:ASP:OD1	2.53	0.41
1:B:239:VAL:HG22	1:B:239:VAL:O	2.21	0.41
1:E:95:MET:HE2	1:E:183:VAL:HG22	2.02	0.41
3:I:170:GLU:O	3:I:171:ILE:C	2.64	0.41
4:J:166:LEU:HD11	4:J:188:VAL:HG11	2.03	0.41

Continued on next page...

Continued from previous page...

Atom-1	Atom-2	Interatomic distance (Å)	Clash overlap (Å)
1:B:220:ILE:HG12	1:B:268:LEU:HD23	2.03	0.41
1:B:636:GLN:OE1	1:B:637:GLY:N	2.54	0.41
1:C:226:GLU:OE1	1:C:226:GLU:N	2.53	0.41
1:C:496:GLN:N	1:C:496:GLN:CD	2.79	0.41
1:C:532:ASP:N	1:C:532:ASP:OD1	2.54	0.41
1:D:603:ASP:OD1	1:D:603:ASP:N	2.52	0.41
1:F:285:VAL:O	1:F:285:VAL:HG23	2.21	0.41
1:F:597:LEU:N	1:F:597:LEU:HD23	2.35	0.41
4:J:49:ALA:HB2	4:J:64:ALA:HB3	2.02	0.41
1:A:216:GLU:OE1	1:A:216:GLU:N	2.54	0.41
1:C:21:CYS:SG	1:C:128:GLN:NE2	2.94	0.41
1:D:688:ASP:OD1	1:D:689:LYS:N	2.53	0.41
4:K:202:ALA:O	4:K:203:LYS:C	2.64	0.41
1:B:23:VAL:HB	1:B:61:ALA:HB3	2.02	0.40
1:B:467:MET:HG3	1:B:467:MET:O	2.21	0.40
1:C:414:MET:SD	1:C:449:GLN:NE2	2.94	0.40
1:C:707:ILE:HG23	1:C:708:LYS:N	2.36	0.40
2:H:244:VAL:HG11	3:I:67:ILE:CD1	2.52	0.40
1:C:351:VAL:O	1:C:355:LEU:HG	2.21	0.40
1:F:366:ASN:OD1	1:F:366:ASN:N	2.54	0.40
1:A:460:SER:O	1:A:463:VAL:O	2.40	0.40
1:A:579:THR:O	1:A:583:GLN:HG2	2.21	0.40
3:I:36:VAL:HG12	3:I:156:ILE:HG21	2.01	0.40
4:L:3:THR:HG23	4:L:4:SER:N	2.36	0.40
1:A:255:GLY:HA2	1:A:369:VAL:O	2.22	0.40
1:E:39:THR:HG22	1:E:78:ILE:HG22	2.04	0.40
1:E:276:MET:HG2	1:E:277:LEU:HD12	2.04	0.40
1:E:525:VAL:HG13	1:E:562:PHE:HE1	1.86	0.40
4:L:119:ILE:O	4:L:123:HIS:ND1	2.51	0.40

There are no symmetry-related clashes.

5.3 Torsion angles ⓘ

5.3.1 Protein backbone ⓘ

In the following table, the Percentiles column shows the percent Ramachandran outliers of the chain as a percentile score with respect to all PDB entries followed by that with respect to all EM entries.

The Analysed column shows the number of residues for which the backbone conformation was analysed, and the total number of residues.

Mol	Chain	Analysed	Favoured	Allowed	Outliers	Percentiles	
1	A	547/747 (73%)	522 (95%)	24 (4%)	1 (0%)	44	76
1	B	736/747 (98%)	714 (97%)	22 (3%)	0	100	100
1	C	758/747 (102%)	733 (97%)	24 (3%)	1 (0%)	48	79
1	D	739/747 (99%)	711 (96%)	26 (4%)	2 (0%)	37	69
1	E	732/747 (98%)	702 (96%)	29 (4%)	1 (0%)	48	79
1	F	527/747 (70%)	508 (96%)	19 (4%)	0	100	100
2	G	61/267 (23%)	61 (100%)	0	0	100	100
2	H	80/267 (30%)	78 (98%)	1 (1%)	1 (1%)	10	41
3	I	153/222 (69%)	142 (93%)	11 (7%)	0	100	100
4	J	285/296 (96%)	279 (98%)	6 (2%)	0	100	100
4	K	272/296 (92%)	268 (98%)	4 (2%)	0	100	100
4	L	271/296 (92%)	267 (98%)	4 (2%)	0	100	100
All	All	5161/6126 (84%)	4985 (97%)	170 (3%)	6 (0%)	50	79

All (6) Ramachandran outliers are listed below:

Mol	Chain	Res	Type
1	A	466	ASP
1	C	423	ASP
1	D	200	LYS
1	D	435	ASN
1	E	487	ASP
2	H	181	ILE

5.3.2 Protein sidechains ⓘ

In the following table, the Percentiles column shows the percent sidechain outliers of the chain as a percentile score with respect to all PDB entries followed by that with respect to all EM entries.

The Analysed column shows the number of residues for which the sidechain conformation was analysed, and the total number of residues.

Mol	Chain	Analysed	Rotameric	Outliers	Percentiles	
1	A	469/638 (74%)	469 (100%)	0	100	100
1	B	634/638 (99%)	634 (100%)	0	100	100
1	C	652/638 (102%)	646 (99%)	6 (1%)	75	86

Continued on next page...

Continued from previous page...

Mol	Chain	Analysed	Rotameric	Outliers	Percentiles	
1	D	638/638 (100%)	634 (99%)	4 (1%)	84	91
1	E	632/638 (99%)	632 (100%)	0	100	100
1	F	454/638 (71%)	452 (100%)	2 (0%)	89	94
2	G	58/245 (24%)	58 (100%)	0	100	100
2	H	74/245 (30%)	74 (100%)	0	100	100
3	I	136/187 (73%)	136 (100%)	0	100	100
4	J	235/243 (97%)	235 (100%)	0	100	100
4	K	227/243 (93%)	227 (100%)	0	100	100
4	L	226/243 (93%)	225 (100%)	1 (0%)	89	94
All	All	4435/5234 (85%)	4422 (100%)	13 (0%)	91	96

All (13) residues with a non-rotameric sidechain are listed below:

Mol	Chain	Res	Type
1	C	276[A]	MET
1	C	276[B]	MET
1	C	344[A]	THR
1	C	344[B]	THR
1	C	687[A]	LYS
1	C	687[B]	LYS
1	D	408[A]	HIS
1	D	408[B]	HIS
1	D	435	ASN
1	D	437	SER
1	F	649[A]	LYS
1	F	649[B]	LYS
4	L	96	ASP

Sometimes sidechains can be flipped to improve hydrogen bonding and reduce clashes. All (24) such sidechains are listed below:

Mol	Chain	Res	Type
1	A	210	ASN
1	A	247	GLN
1	A	666	HIS
1	A	675	GLN
1	B	33	GLN
1	B	106	ASN
1	B	182	GLN

Continued on next page...

Continued from previous page...

Mol	Chain	Res	Type
1	B	252	HIS
1	C	128	GLN
1	C	182	GLN
1	D	33	GLN
1	D	128	GLN
1	D	301	ASN
1	D	435	ASN
1	D	505	ASN
1	D	561	ASN
1	F	286	ASN
1	F	353	GLN
2	G	207	ASN
4	J	123	HIS
4	K	98	GLN
4	L	50	ASN
4	L	98	GLN
4	L	144	HIS

5.3.3 RNA [i](#)

There are no RNA molecules in this entry.

5.4 Non-standard residues in protein, DNA, RNA chains [i](#)

There are no non-standard protein/DNA/RNA residues in this entry.

5.5 Carbohydrates [i](#)

There are no oligosaccharides in this entry.

5.6 Ligand geometry [i](#)

12 ligands are modelled in this entry.

In the following table, the Counts columns list the number of bonds (or angles) for which Mogul statistics could be retrieved, the number of bonds (or angles) that are observed in the model and the number of bonds (or angles) that are defined in the Chemical Component Dictionary. The Link column lists molecule types, if any, to which the group is linked. The Z score for a bond length (or angle) is the number of standard deviations the observed value is removed from the expected value. A bond length (or angle) with $|Z| > 2$ is considered an outlier worth inspection. RMSZ is the root-mean-square of all Z scores of the bond lengths (or angles).

Mol	Type	Chain	Res	Link	Bond lengths			Bond angles		
					Counts	RMSZ	# Z > 2	Counts	RMSZ	# Z > 2
6	ATP	A	802	-	28,33,33	0.71	0	34,52,52	0.88	2 (5%)
6	ATP	C	802	-	28,33,33	0.78	0	34,52,52	0.91	2 (5%)
6	ATP	B	802	-	28,33,33	0.73	0	34,52,52	0.89	1 (2%)
6	ATP	D	801	-	28,33,33	0.69	0	34,52,52	0.89	1 (2%)
6	ATP	F	801	-	28,33,33	0.66	0	34,52,52	0.93	1 (2%)
6	ATP	D	802	-	28,33,33	0.73	0	34,52,52	0.93	1 (2%)
6	ATP	E	801	-	28,33,33	0.71	0	34,52,52	0.94	1 (2%)
6	ATP	F	802	-	28,33,33	0.67	0	34,52,52	0.88	1 (2%)
6	ATP	E	802	-	28,33,33	0.65	0	34,52,52	0.88	1 (2%)
6	ATP	B	801	-	28,33,33	0.73	0	34,52,52	0.95	1 (2%)
5	ADP	A	801	-	24,29,29	0.89	0	29,45,45	1.20	2 (6%)
6	ATP	C	801	-	28,33,33	0.81	0	34,52,52	0.91	2 (5%)

In the following table, the Chirals column lists the number of chiral outliers, the number of chiral centers analysed, the number of these observed in the model and the number defined in the Chemical Component Dictionary. Similar counts are reported in the Torsion and Rings columns. '-' means no outliers of that kind were identified.

Mol	Type	Chain	Res	Link	Chirals	Torsions	Rings
6	ATP	A	802	-	-	7/18/38/38	0/3/3/3
6	ATP	C	802	-	-	8/18/38/38	0/3/3/3
6	ATP	B	802	-	-	5/18/38/38	0/3/3/3
6	ATP	D	801	-	-	4/18/38/38	0/3/3/3
6	ATP	F	801	-	-	7/18/38/38	0/3/3/3
6	ATP	D	802	-	-	2/18/38/38	0/3/3/3
6	ATP	E	801	-	-	6/18/38/38	0/3/3/3
6	ATP	F	802	-	-	5/18/38/38	0/3/3/3
6	ATP	E	802	-	-	5/18/38/38	0/3/3/3
6	ATP	B	801	-	-	2/18/38/38	0/3/3/3
5	ADP	A	801	-	-	2/12/32/32	0/3/3/3
6	ATP	C	801	-	-	5/18/38/38	0/3/3/3

There are no bond length outliers.

All (16) bond angle outliers are listed below:

Mol	Chain	Res	Type	Atoms	Z	Observed(°)	Ideal(°)
5	A	801	ADP	N3-C2-N1	-4.20	122.97	128.67
6	B	801	ATP	C5-C6-N6	2.37	123.91	120.31
6	B	802	ATP	C5-C6-N6	2.36	123.91	120.31
6	D	802	ATP	C5-C6-N6	2.36	123.90	120.31
6	C	801	ATP	C5-C6-N6	2.35	123.89	120.31
6	D	801	ATP	C5-C6-N6	2.35	123.89	120.31
6	F	802	ATP	C5-C6-N6	2.34	123.88	120.31
6	A	802	ATP	C5-C6-N6	2.34	123.87	120.31
5	A	801	ADP	C4-C5-N7	-2.33	106.88	109.34
6	E	801	ATP	C5-C6-N6	2.33	123.86	120.31
6	C	802	ATP	C5-C6-N6	2.32	123.84	120.31
6	E	802	ATP	C5-C6-N6	2.31	123.83	120.31
6	F	801	ATP	C5-C6-N6	2.30	123.81	120.31
6	C	801	ATP	O3'-C3'-C4'	-2.05	105.19	111.08
6	C	802	ATP	O3'-C3'-C2'	-2.01	105.38	111.82
6	A	802	ATP	O3'-C3'-C4'	-2.00	105.33	111.08

There are no chirality outliers.

All (58) torsion outliers are listed below:

Mol	Chain	Res	Type	Atoms
5	A	801	ADP	O4'-C4'-C5'-O5'
6	A	802	ATP	C5'-O5'-PA-O1A
6	A	802	ATP	C5'-O5'-PA-O2A
6	A	802	ATP	C5'-O5'-PA-O3A
6	B	802	ATP	C5'-O5'-PA-O2A
6	C	801	ATP	PB-O3B-PG-O2G
6	C	801	ATP	PB-O3B-PG-O3G
6	C	802	ATP	PB-O3B-PG-O3G
6	C	802	ATP	C5'-O5'-PA-O3A
6	E	801	ATP	C5'-O5'-PA-O2A
6	E	802	ATP	PB-O3B-PG-O2G
6	E	802	ATP	C5'-O5'-PA-O2A
6	F	801	ATP	PB-O3A-PA-O5'
6	F	801	ATP	C5'-O5'-PA-O3A
6	F	801	ATP	O4'-C4'-C5'-O5'
6	F	801	ATP	C3'-C4'-C5'-O5'
6	F	802	ATP	C5'-O5'-PA-O2A
5	A	801	ADP	C3'-C4'-C5'-O5'
6	A	802	ATP	O4'-C4'-C5'-O5'
6	E	802	ATP	O4'-C4'-C5'-O5'
6	A	802	ATP	C3'-C4'-C5'-O5'
6	C	802	ATP	O4'-C4'-C5'-O5'

Continued on next page...

Continued from previous page...

Mol	Chain	Res	Type	Atoms
6	C	802	ATP	C3'-C4'-C5'-O5'
6	E	802	ATP	C3'-C4'-C5'-O5'
6	F	802	ATP	C3'-C4'-C5'-O5'
6	F	802	ATP	O4'-C4'-C5'-O5'
6	D	802	ATP	PB-O3B-PG-O3G
6	A	802	ATP	PA-O3A-PB-O2B
6	B	801	ATP	PA-O3A-PB-O2B
6	C	801	ATP	PA-O3A-PB-O1B
6	B	802	ATP	C5'-O5'-PA-O1A
6	C	802	ATP	C5'-O5'-PA-O1A
6	E	801	ATP	C5'-O5'-PA-O1A
6	E	801	ATP	C5'-O5'-PA-O3A
6	E	802	ATP	C5'-O5'-PA-O1A
6	F	801	ATP	C5'-O5'-PA-O1A
6	F	802	ATP	C5'-O5'-PA-O1A
6	F	802	ATP	C5'-O5'-PA-O3A
6	B	802	ATP	PA-O3A-PB-O2B
6	D	801	ATP	PA-O3A-PB-O2B
6	E	801	ATP	PB-O3B-PG-O1G
6	D	801	ATP	C3'-C4'-C5'-O5'
6	C	801	ATP	PG-O3B-PB-O2B
6	C	802	ATP	PB-O3B-PG-O1G
6	D	802	ATP	PB-O3B-PG-O2G
6	E	801	ATP	PB-O3B-PG-O2G
6	E	801	ATP	PB-O3B-PG-O3G
6	C	801	ATP	PG-O3B-PB-O1B
6	C	802	ATP	PB-O3A-PA-O1A
6	C	802	ATP	PB-O3A-PA-O2A
6	F	801	ATP	PB-O3A-PA-O1A
6	B	802	ATP	O4'-C4'-C5'-O5'
6	D	801	ATP	O4'-C4'-C5'-O5'
6	B	802	ATP	C3'-C4'-C5'-O5'
6	F	801	ATP	C4'-C5'-O5'-PA
6	A	802	ATP	PA-O3A-PB-O1B
6	B	801	ATP	PA-O3A-PB-O1B
6	D	801	ATP	PA-O3A-PB-O1B

There are no ring outliers.

5 monomers are involved in 5 short contacts:

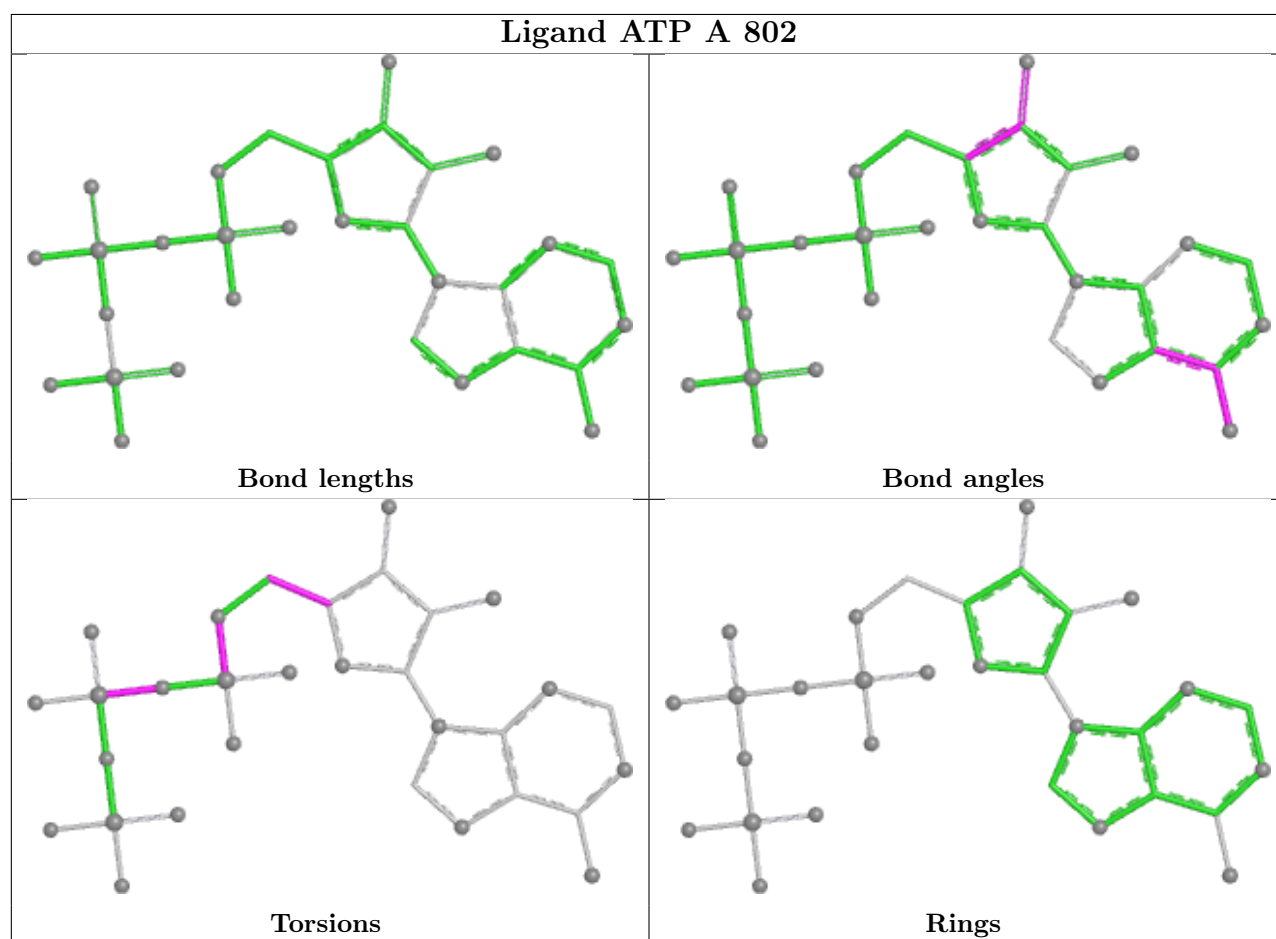
Mol	Chain	Res	Type	Clashes	Symm-Clashes
6	A	802	ATP	1	0

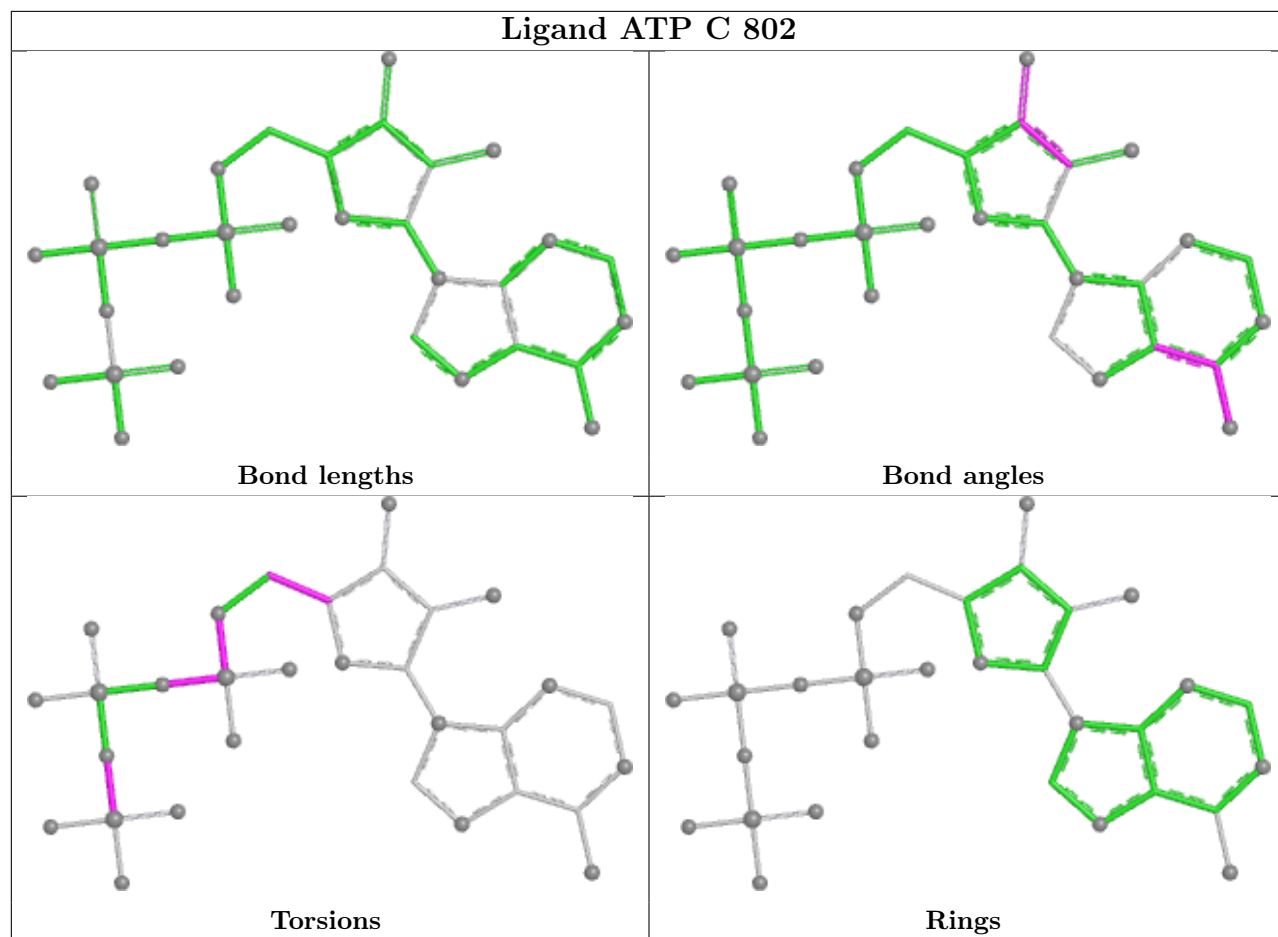
Continued on next page...

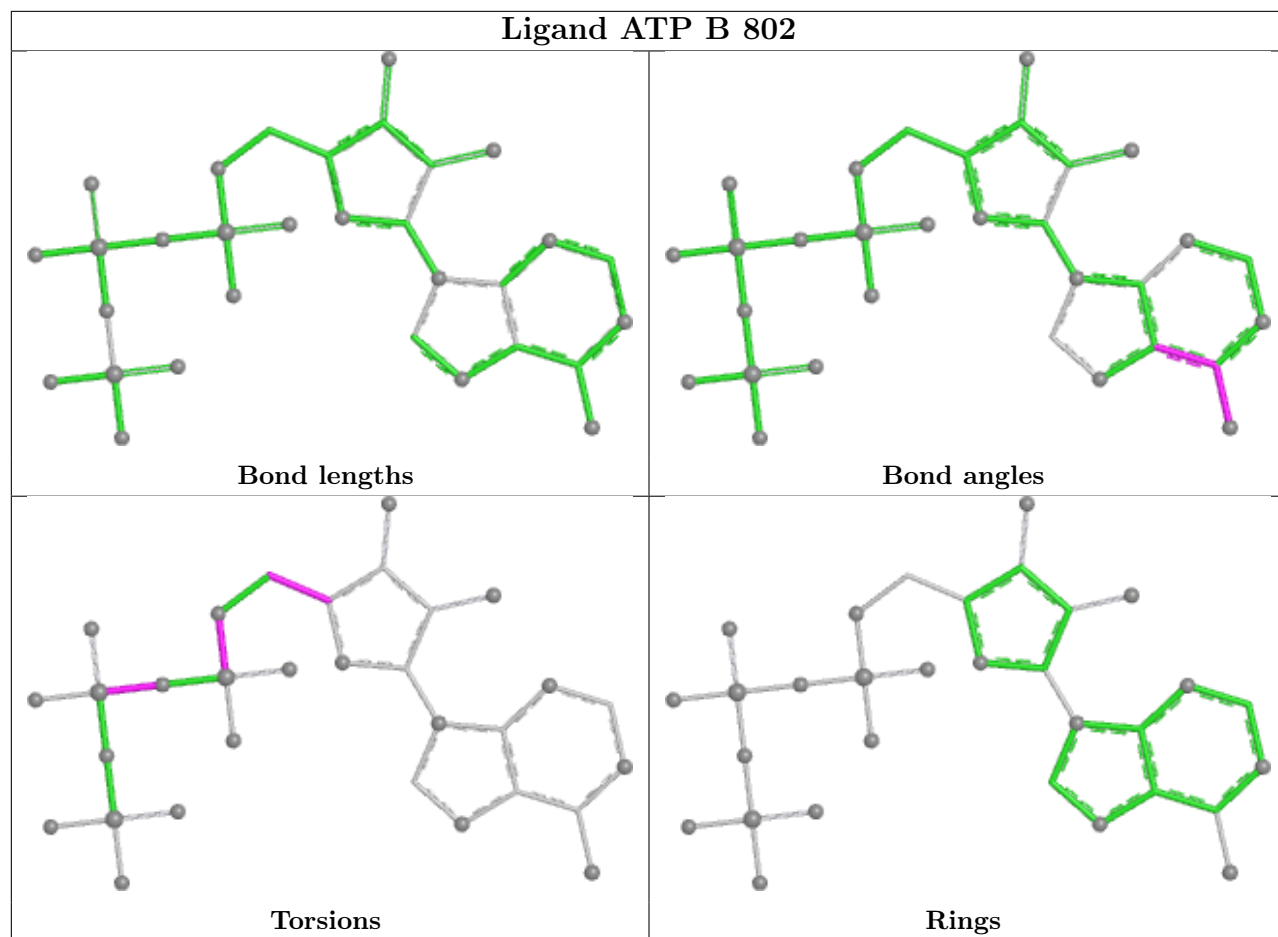
Continued from previous page...

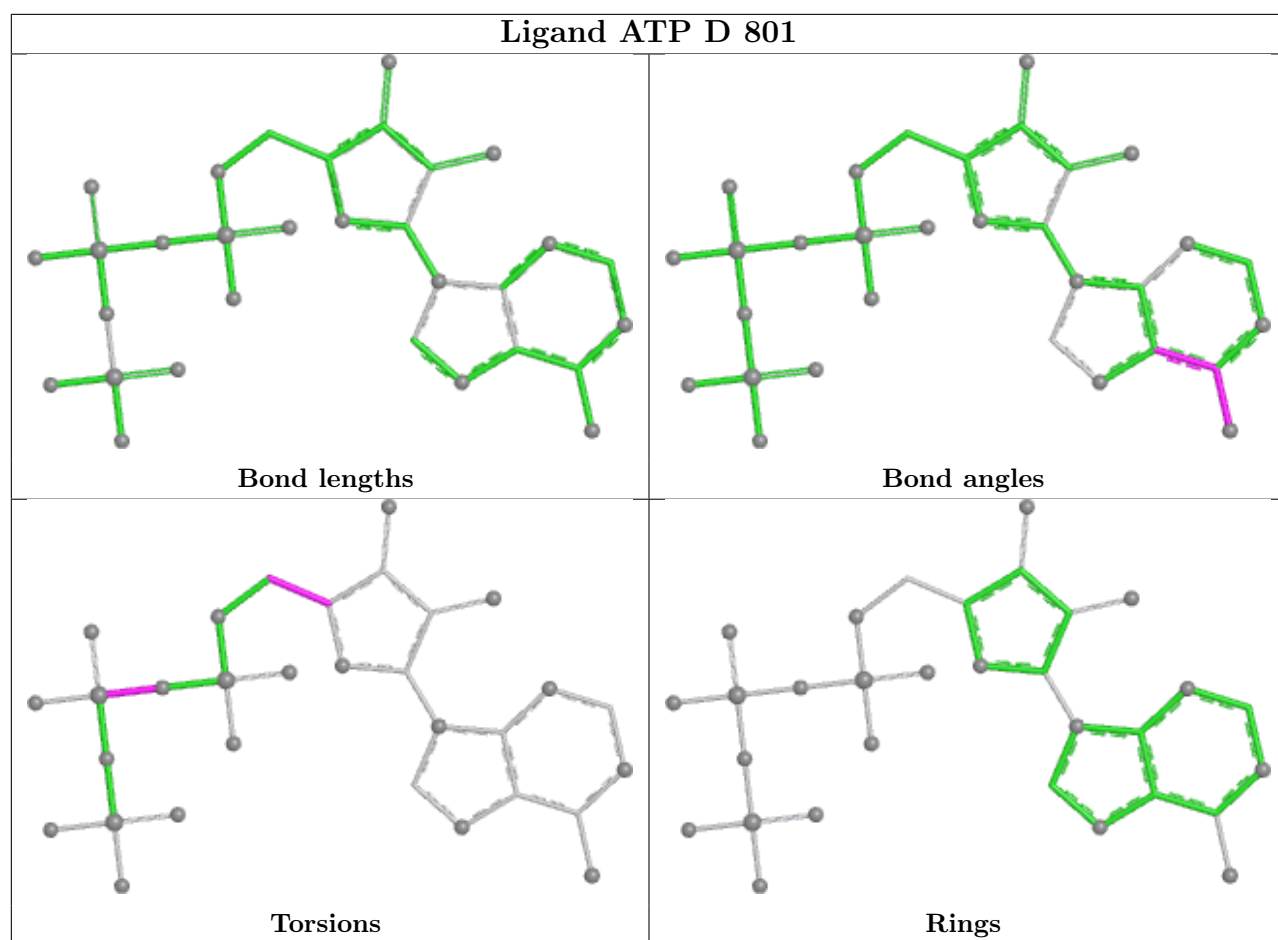
Mol	Chain	Res	Type	Clashes	Symm-Clashes
6	D	801	ATP	1	0
6	F	801	ATP	1	0
6	E	802	ATP	1	0
6	C	801	ATP	1	0

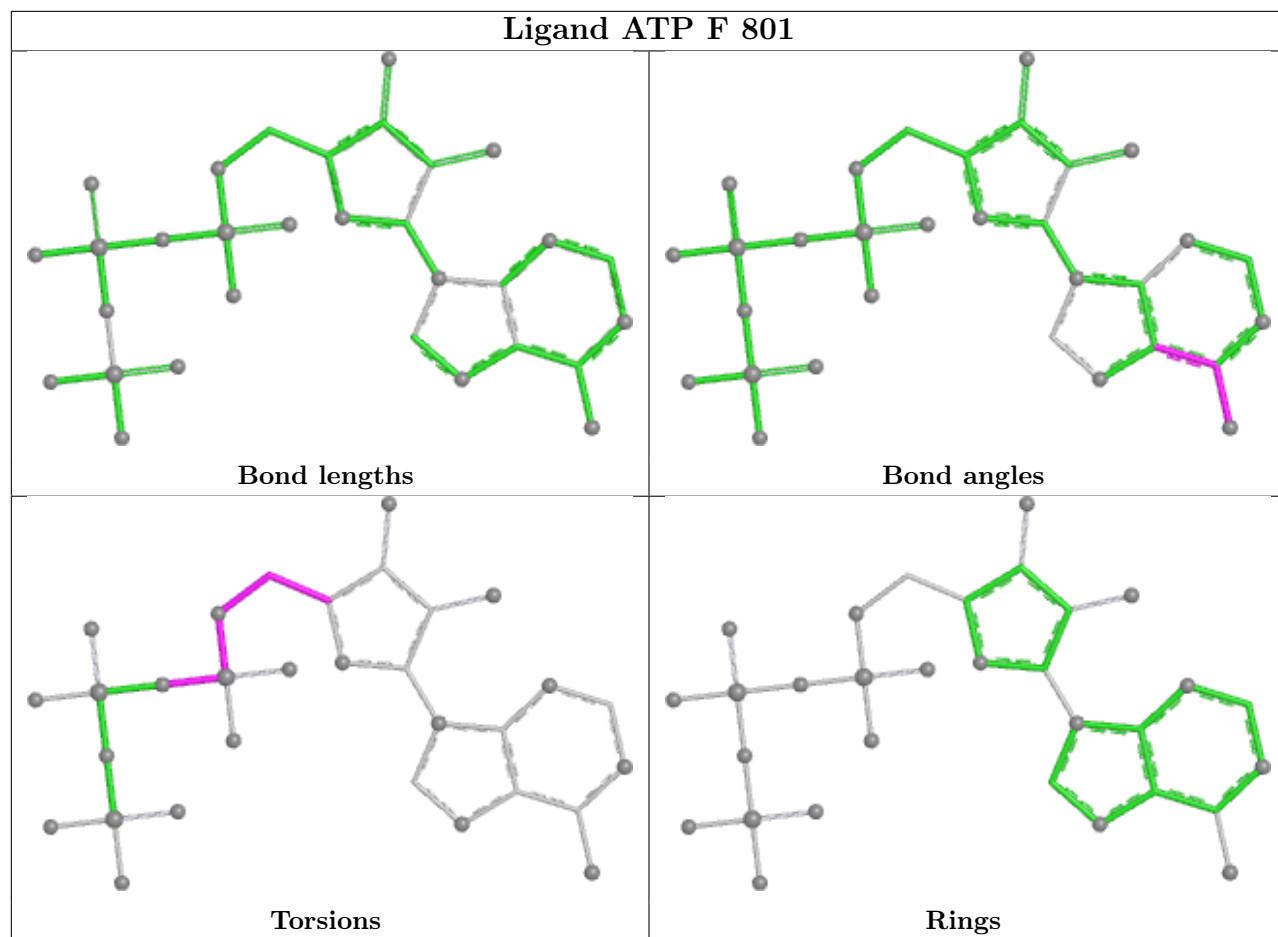
The following is a two-dimensional graphical depiction of Mogul quality analysis of bond lengths, bond angles, torsion angles, and ring geometry for all instances of the Ligand of Interest. In addition, ligands with molecular weight > 250 and outliers as shown on the validation Tables will also be included. For torsion angles, if less than 5% of the Mogul distribution of torsion angles is within 10 degrees of the torsion angle in question, then that torsion angle is considered an outlier. Any bond that is central to one or more torsion angles identified as an outlier by Mogul will be highlighted in the graph. For rings, the root-mean-square deviation (RMSD) between the ring in question and similar rings identified by Mogul is calculated over all ring torsion angles. If the average RMSD is greater than 60 degrees and the minimal RMSD between the ring in question and any Mogul-identified rings is also greater than 60 degrees, then that ring is considered an outlier. The outliers are highlighted in purple. The color gray indicates Mogul did not find sufficient equivalents in the CSD to analyse the geometry.

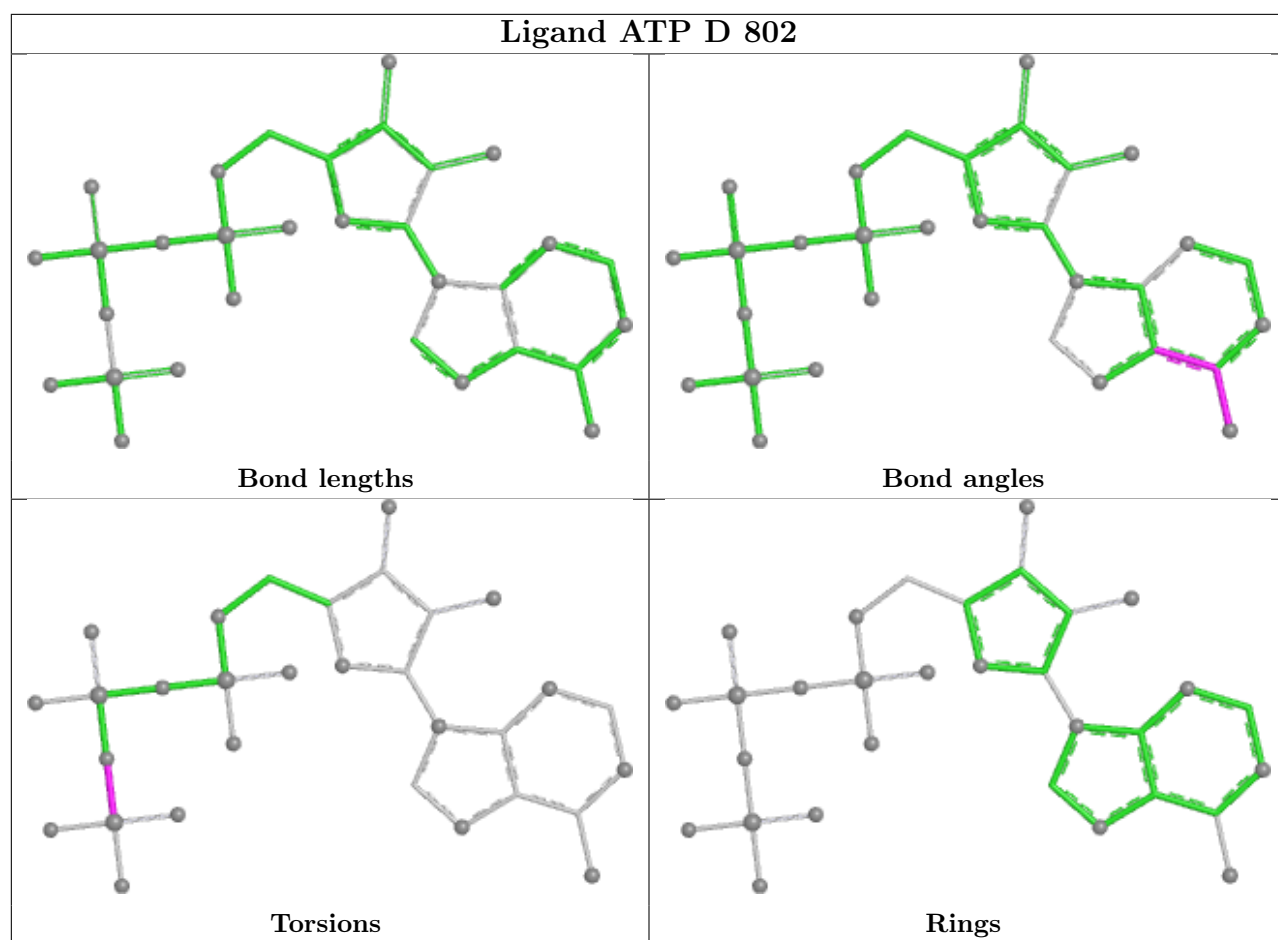


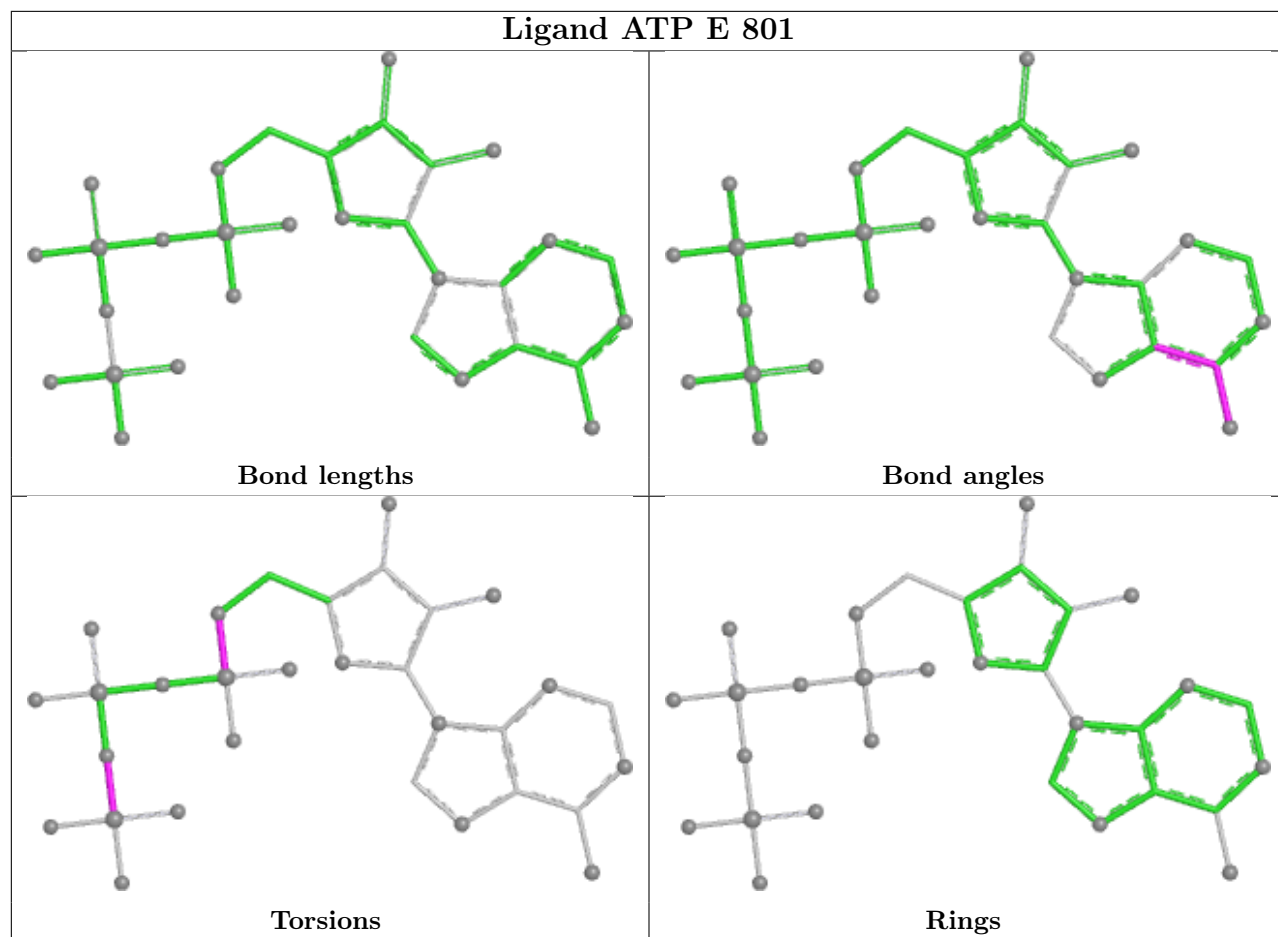


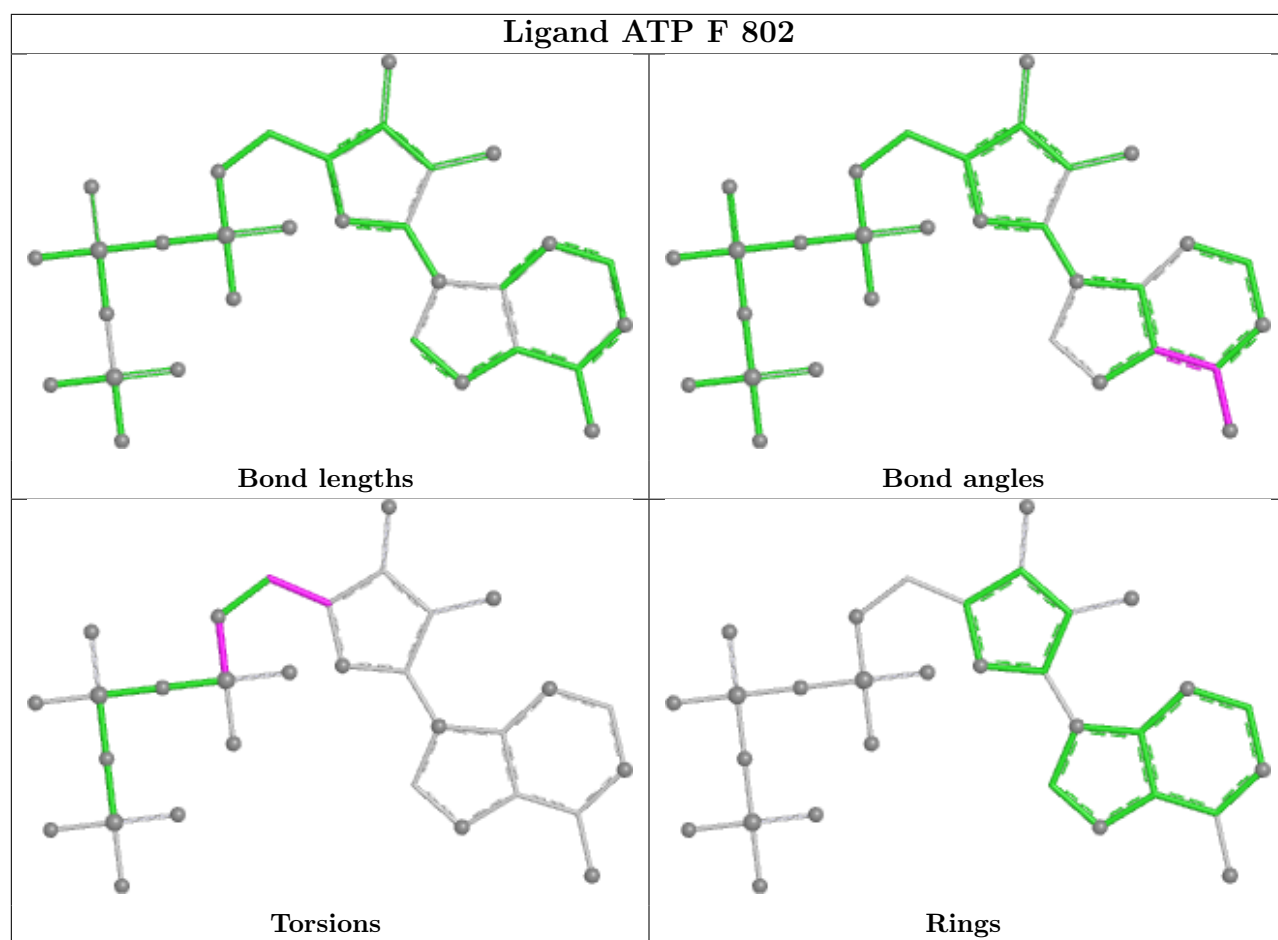


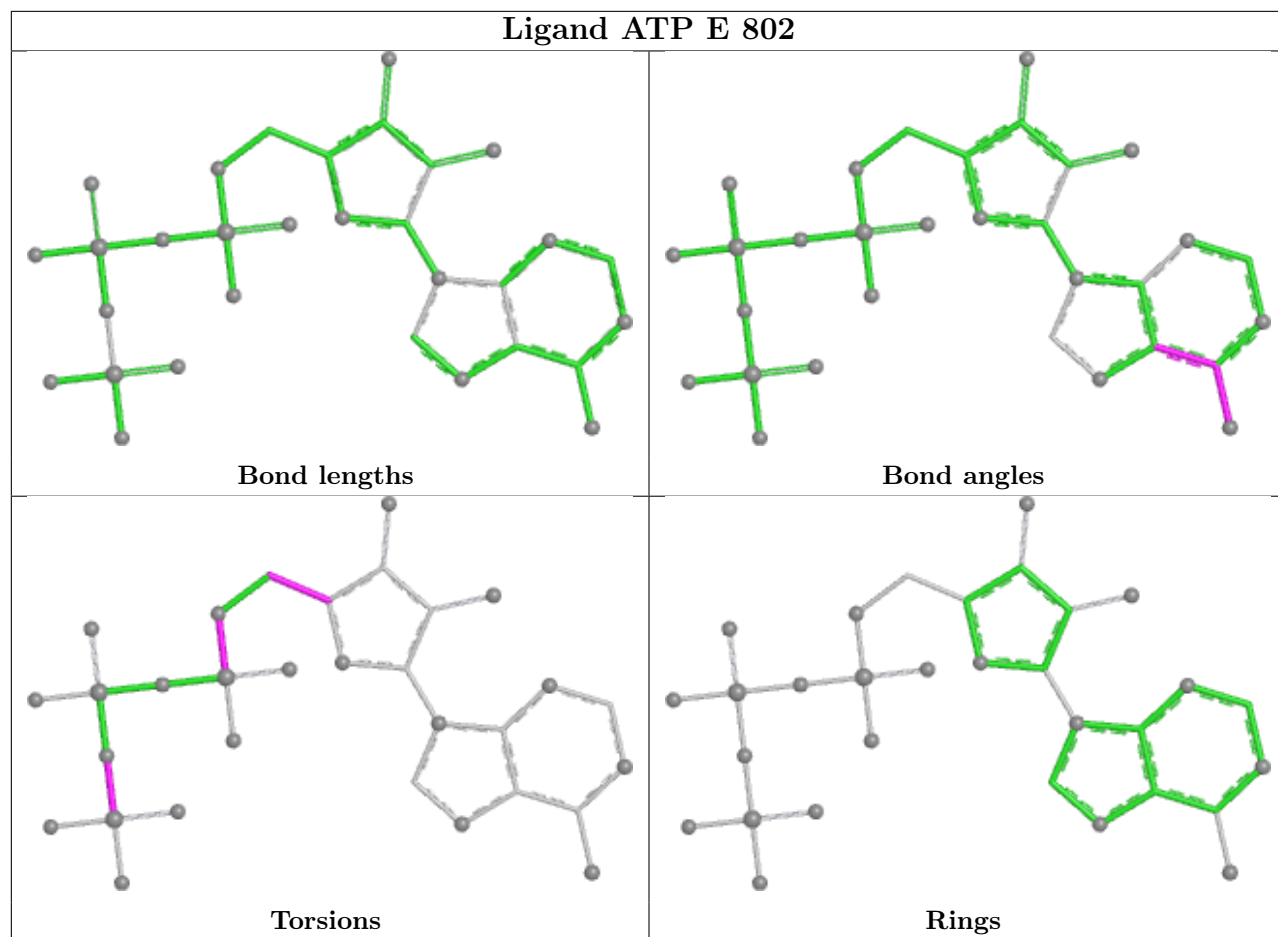




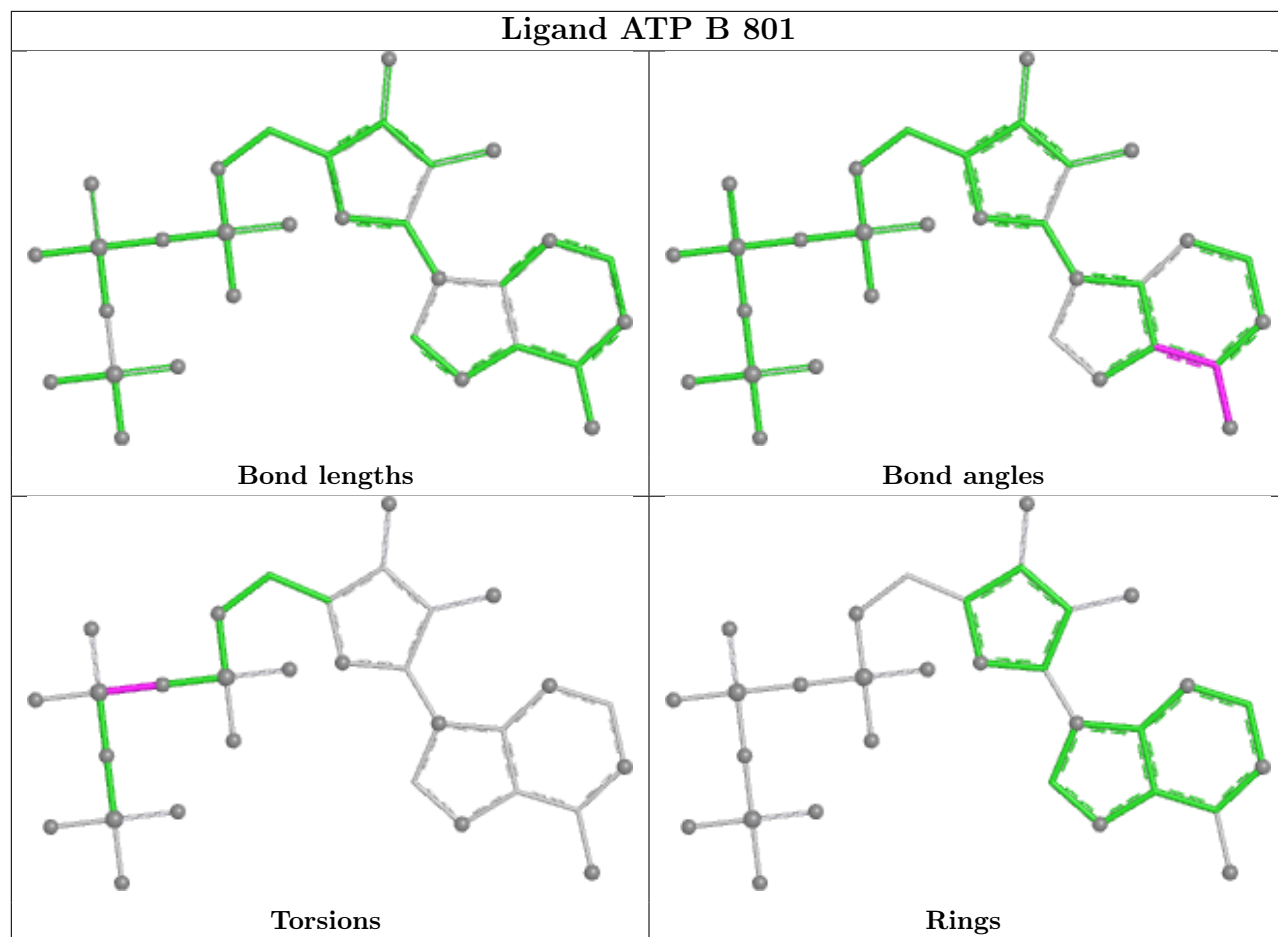




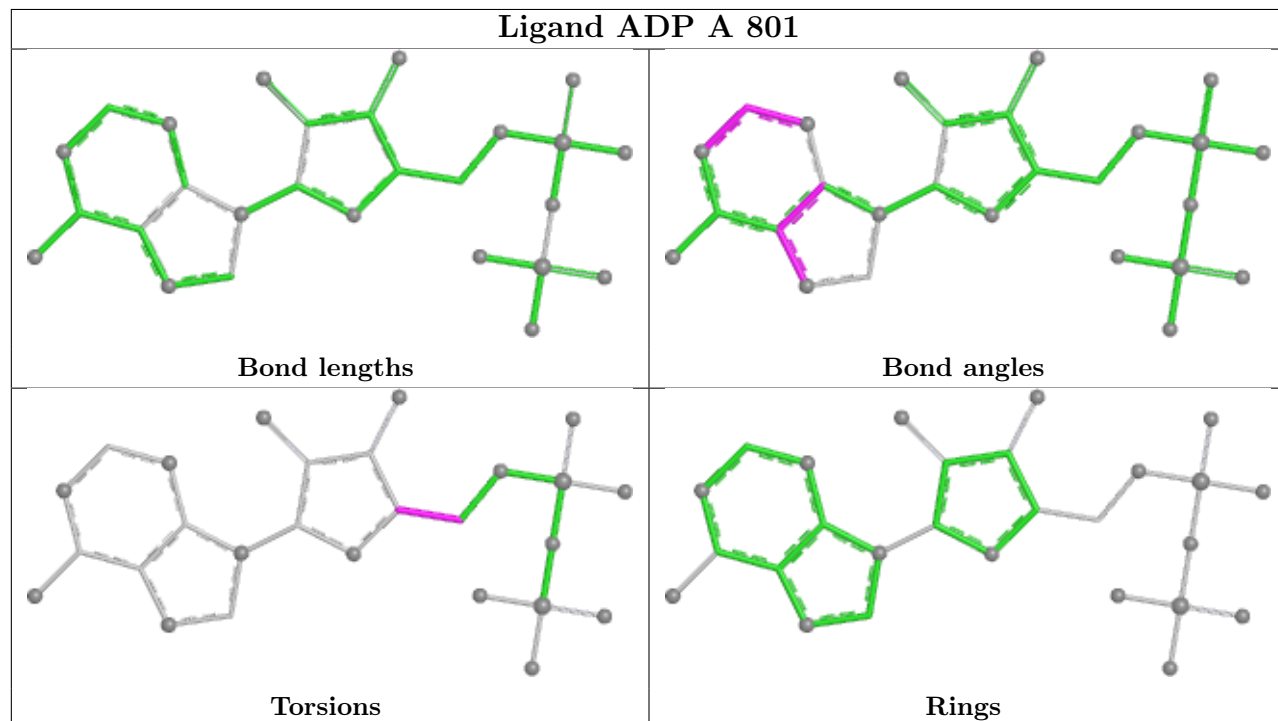


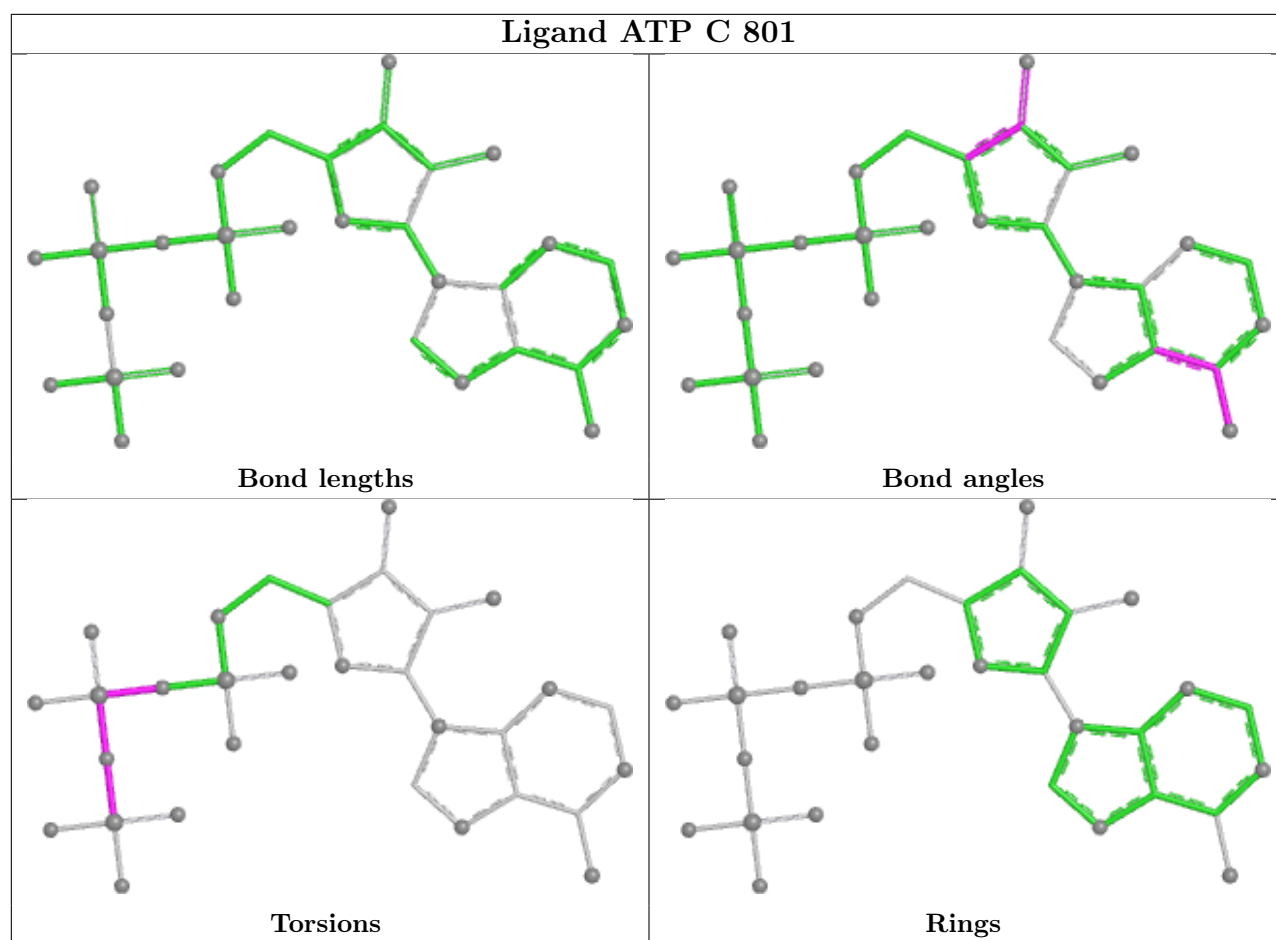


Ligand ATP B 801



Ligand ADP A 801





5.7 Other polymers [i](#)

There are no such residues in this entry.

5.8 Polymer linkage issues [i](#)

There are no chain breaks in this entry.

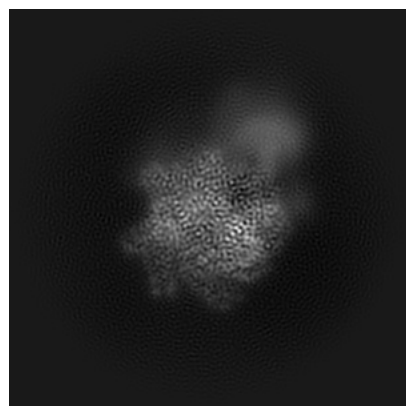
6 Map visualisation [i](#)

This section contains visualisations of the EMDB entry EMD-71458. These allow visual inspection of the internal detail of the map and identification of artifacts.

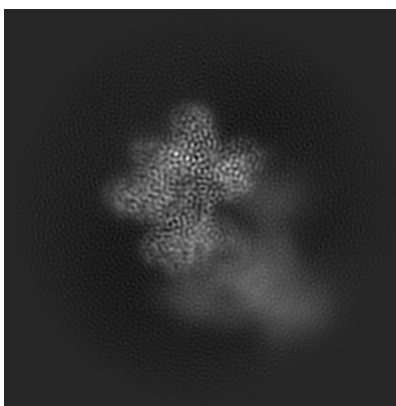
Images derived from a raw map, generated by summing the deposited half-maps, are presented below the corresponding image components of the primary map to allow further visual inspection and comparison with those of the primary map.

6.1 Orthogonal projections [i](#)

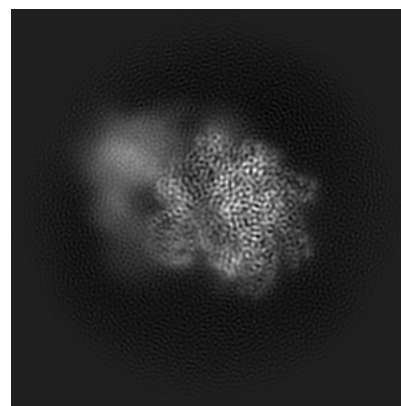
6.1.1 Primary map



X

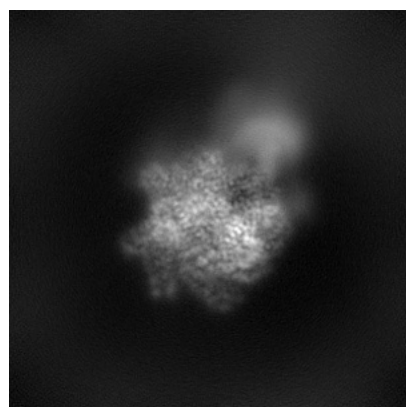


Y

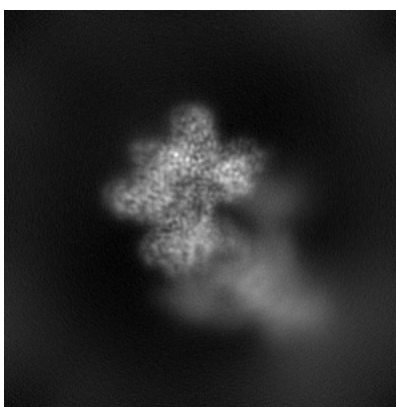


Z

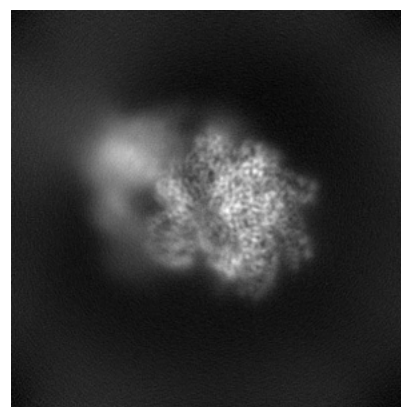
6.1.2 Raw map



X



Y

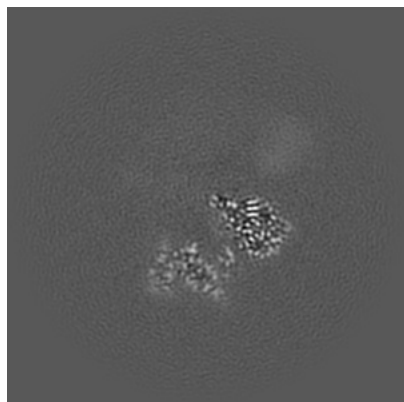


Z

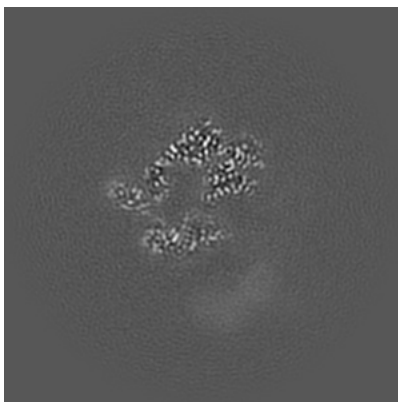
The images above show the map projected in three orthogonal directions.

6.2 Central slices [i](#)

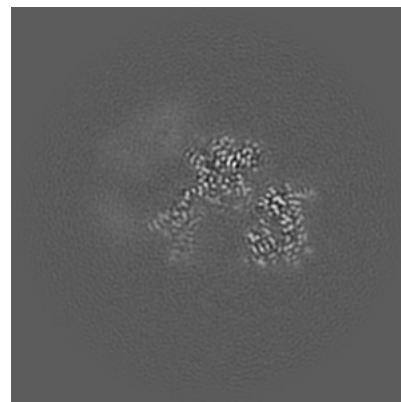
6.2.1 Primary map



X Index: 147

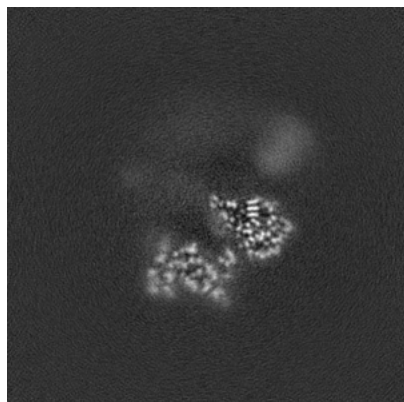


Y Index: 147

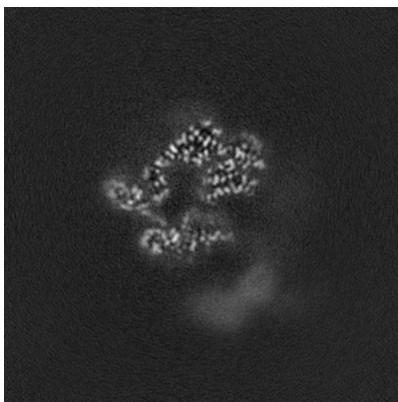


Z Index: 147

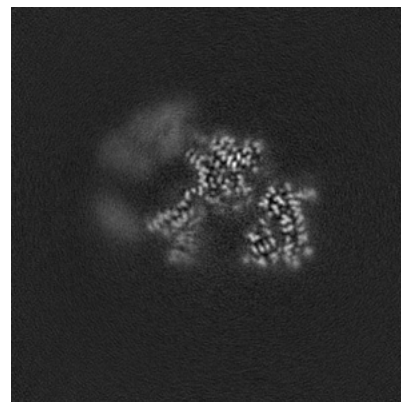
6.2.2 Raw map



X Index: 147



Y Index: 147

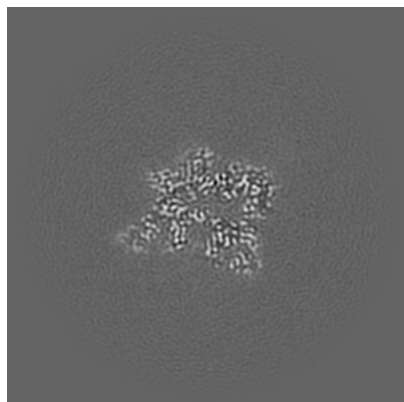


Z Index: 147

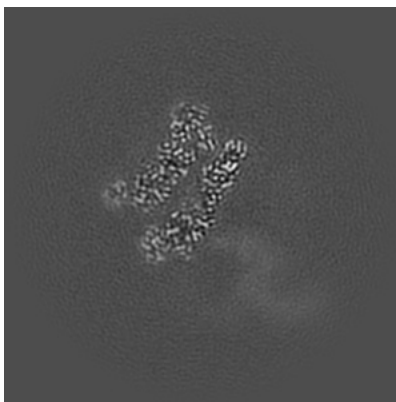
The images above show central slices of the map in three orthogonal directions.

6.3 Largest variance slices [i](#)

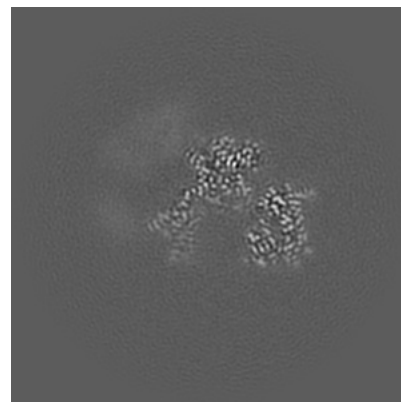
6.3.1 Primary map



X Index: 178

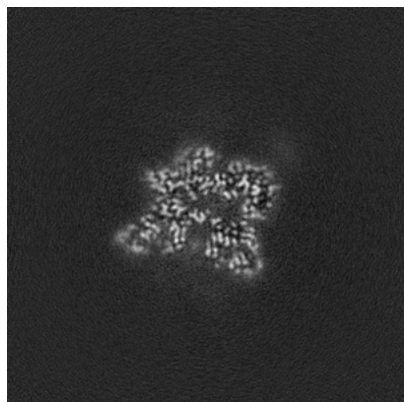


Y Index: 159

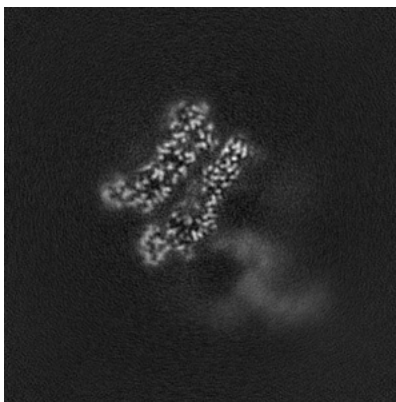


Z Index: 147

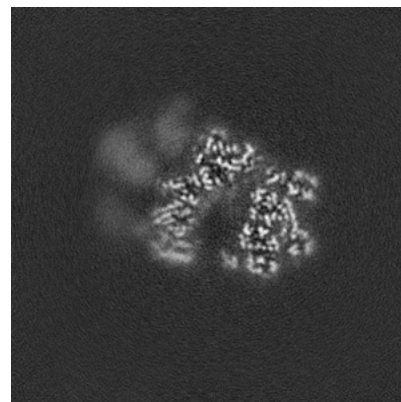
6.3.2 Raw map



X Index: 178



Y Index: 158

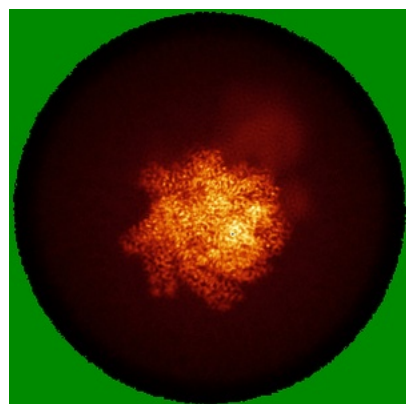


Z Index: 138

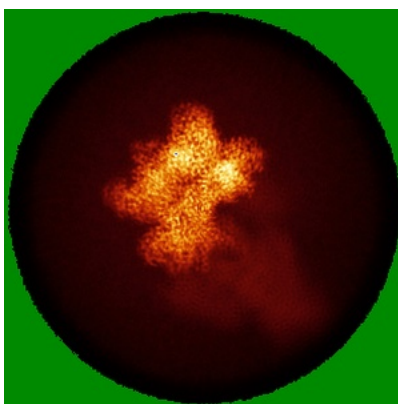
The images above show the largest variance slices of the map in three orthogonal directions.

6.4 Orthogonal standard-deviation projections (False-color) [i](#)

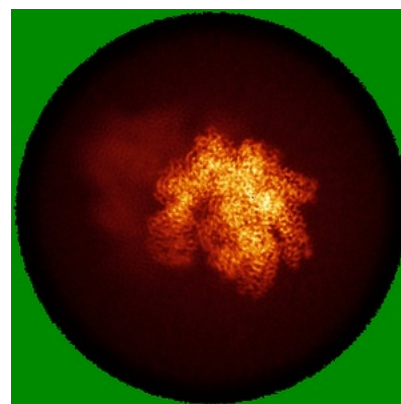
6.4.1 Primary map



X

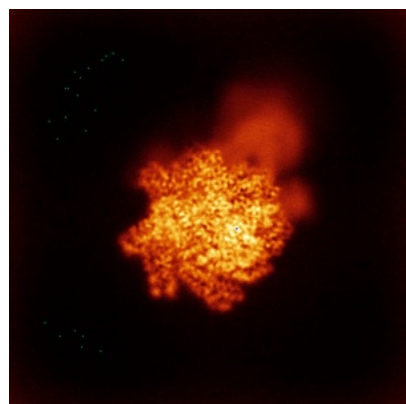


Y

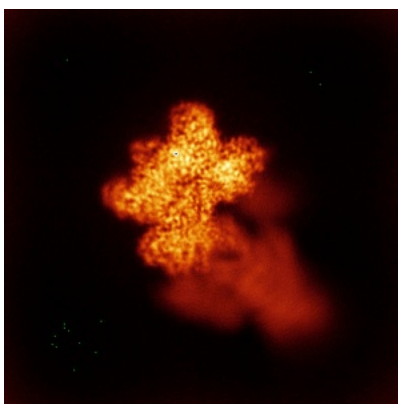


Z

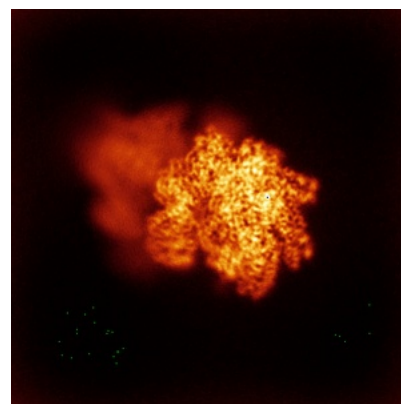
6.4.2 Raw map



X



Y

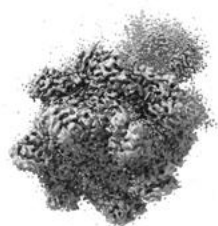


Z

The images above show the map standard deviation projections with false color in three orthogonal directions. Minimum values are shown in green, max in blue, and dark to light orange shades represent small to large values respectively.

6.5 Orthogonal surface views [i](#)

6.5.1 Primary map



X



Y



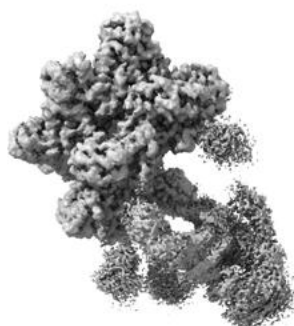
Z

The images above show the 3D surface view of the map at the recommended contour level 0.3. These images, in conjunction with the slice images, may facilitate assessment of whether an appropriate contour level has been provided.

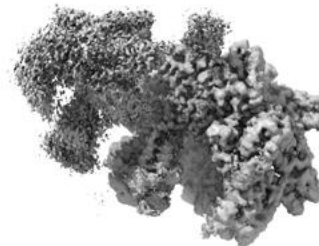
6.5.2 Raw map



X



Y



Z

These images show the 3D surface of the raw map. The raw map's contour level was selected so that its surface encloses the same volume as the primary map does at its recommended contour level.

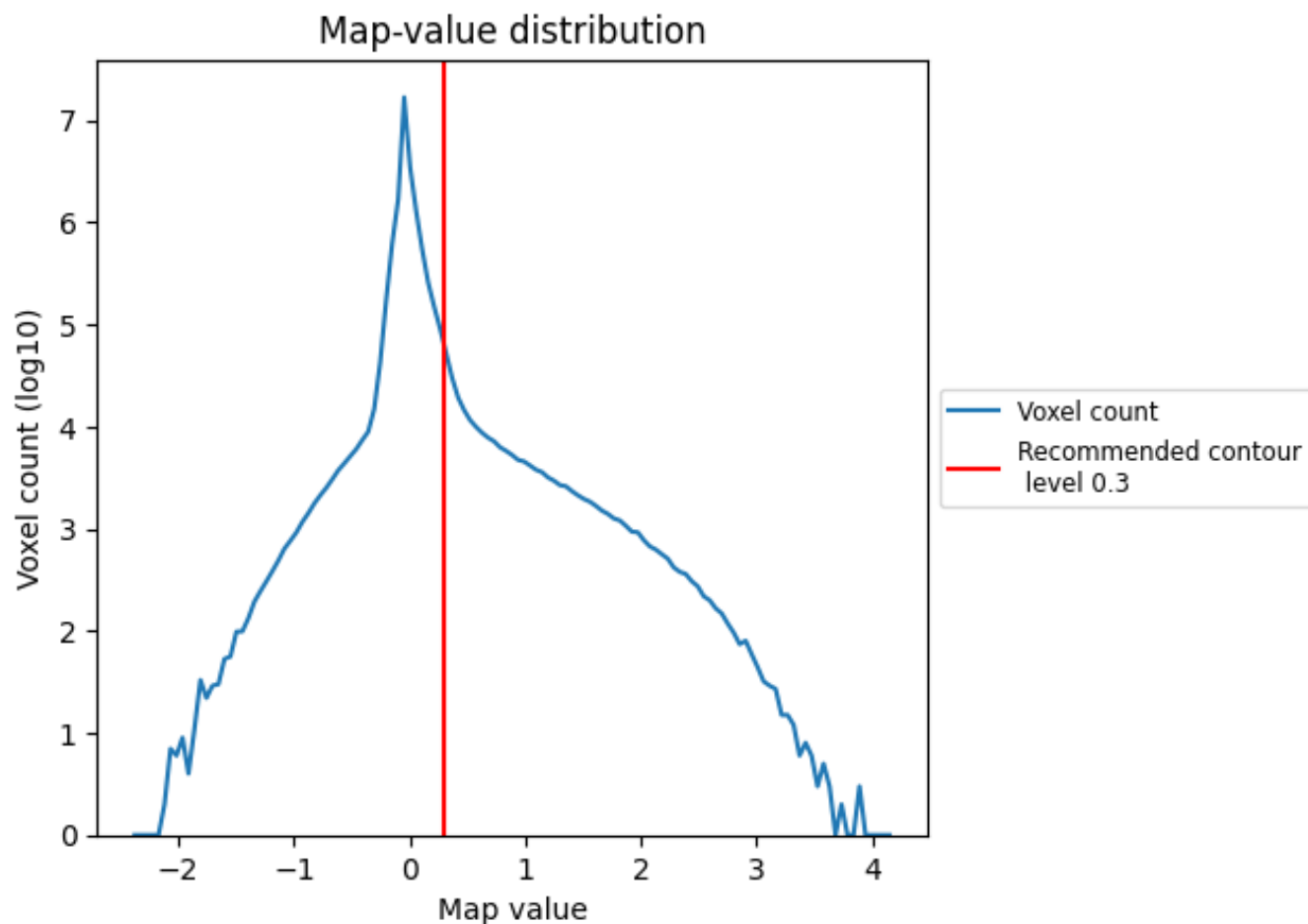
6.6 Mask visualisation [i](#)

This section was not generated. No masks/segmentation were deposited.

7 Map analysis [i](#)

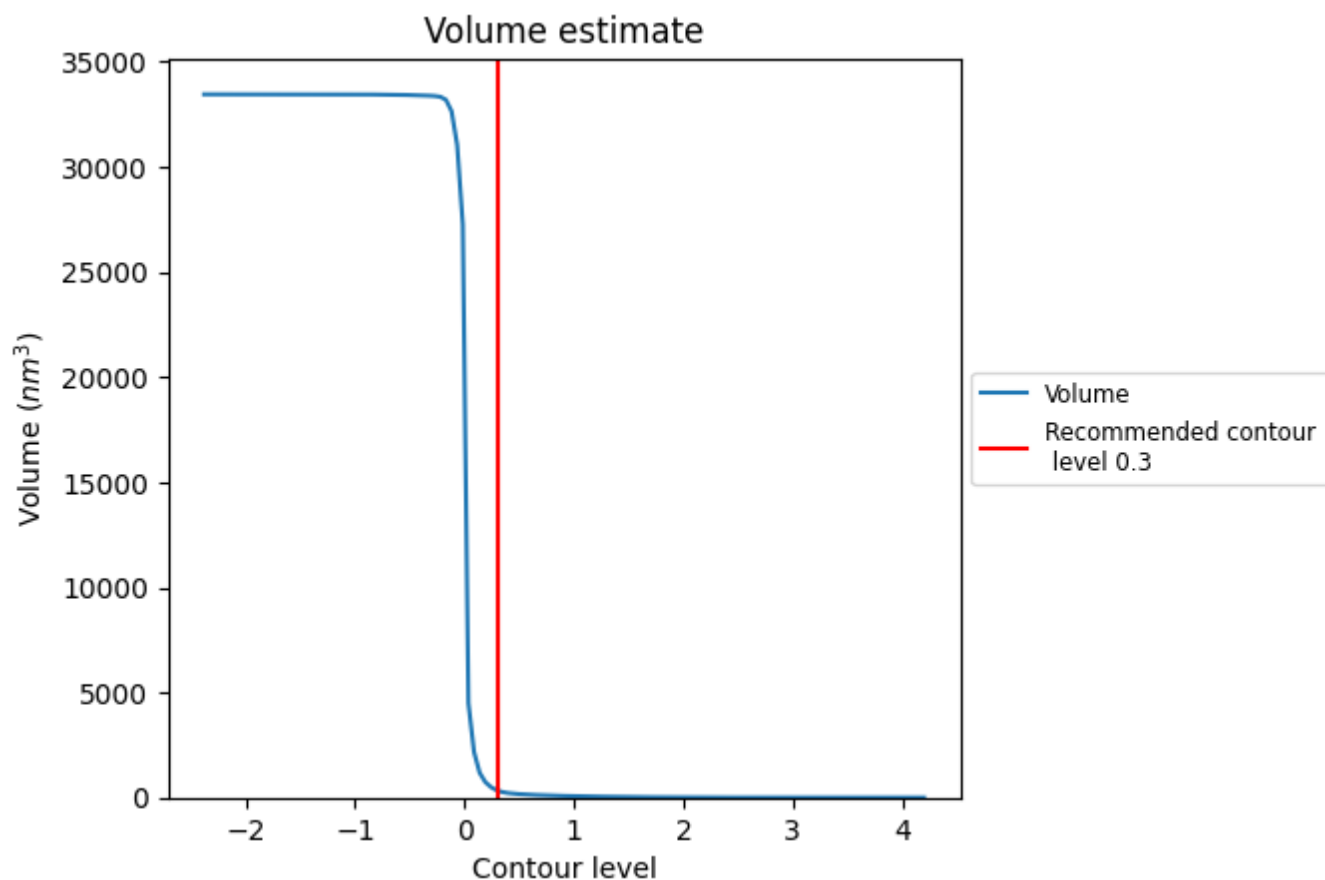
This section contains the results of statistical analysis of the map.

7.1 Map-value distribution [i](#)



The map-value distribution is plotted in 128 intervals along the x-axis. The y-axis is logarithmic. A spike in this graph at zero usually indicates that the volume has been masked.

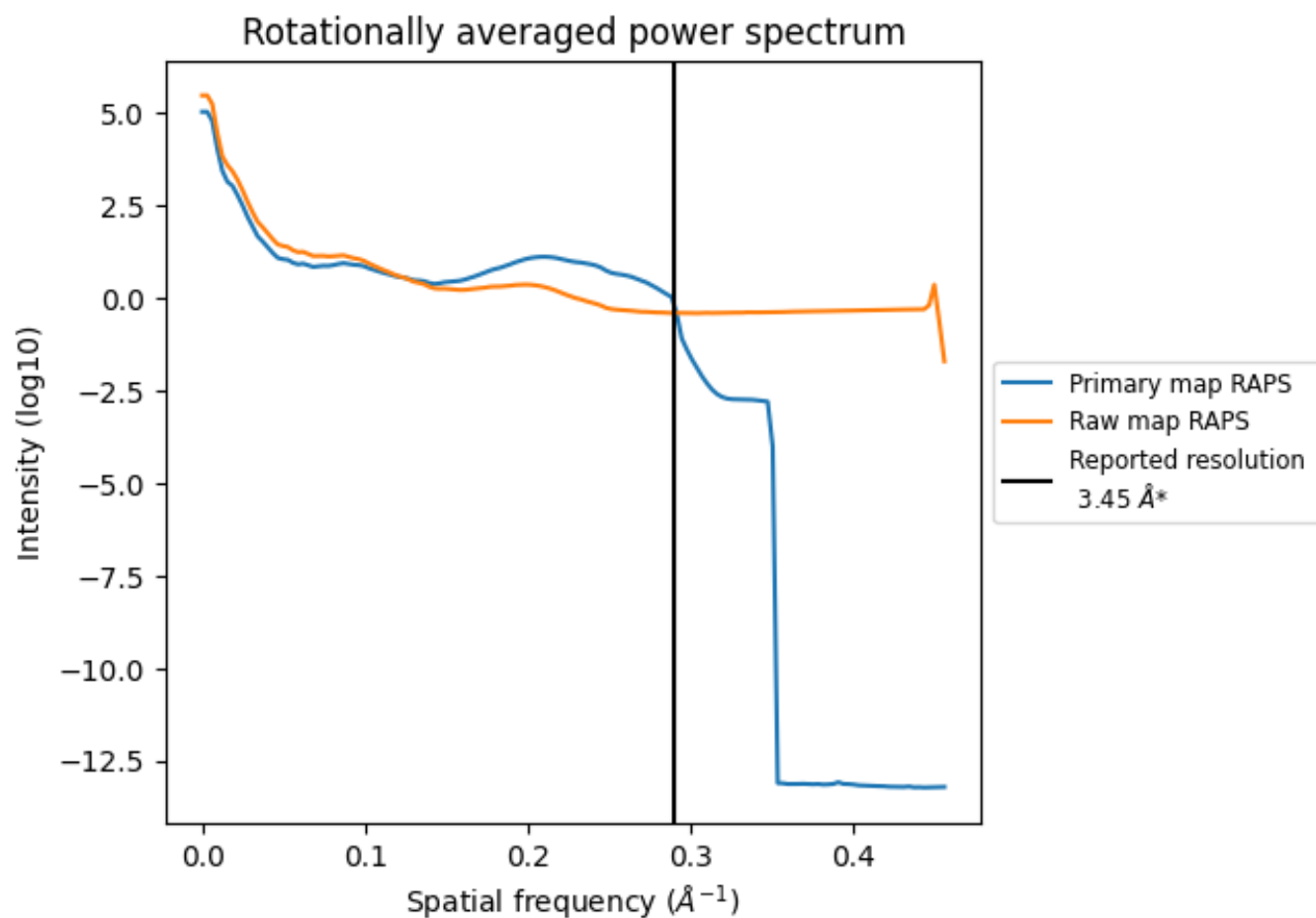
7.2 Volume estimate [i](#)



The volume at the recommended contour level is 340 nm³; this corresponds to an approximate mass of 308 kDa.

The volume estimate graph shows how the enclosed volume varies with the contour level. The recommended contour level is shown as a vertical line and the intersection between the line and the curve gives the volume of the enclosed surface at the given level.

7.3 Rotationally averaged power spectrum ⓘ

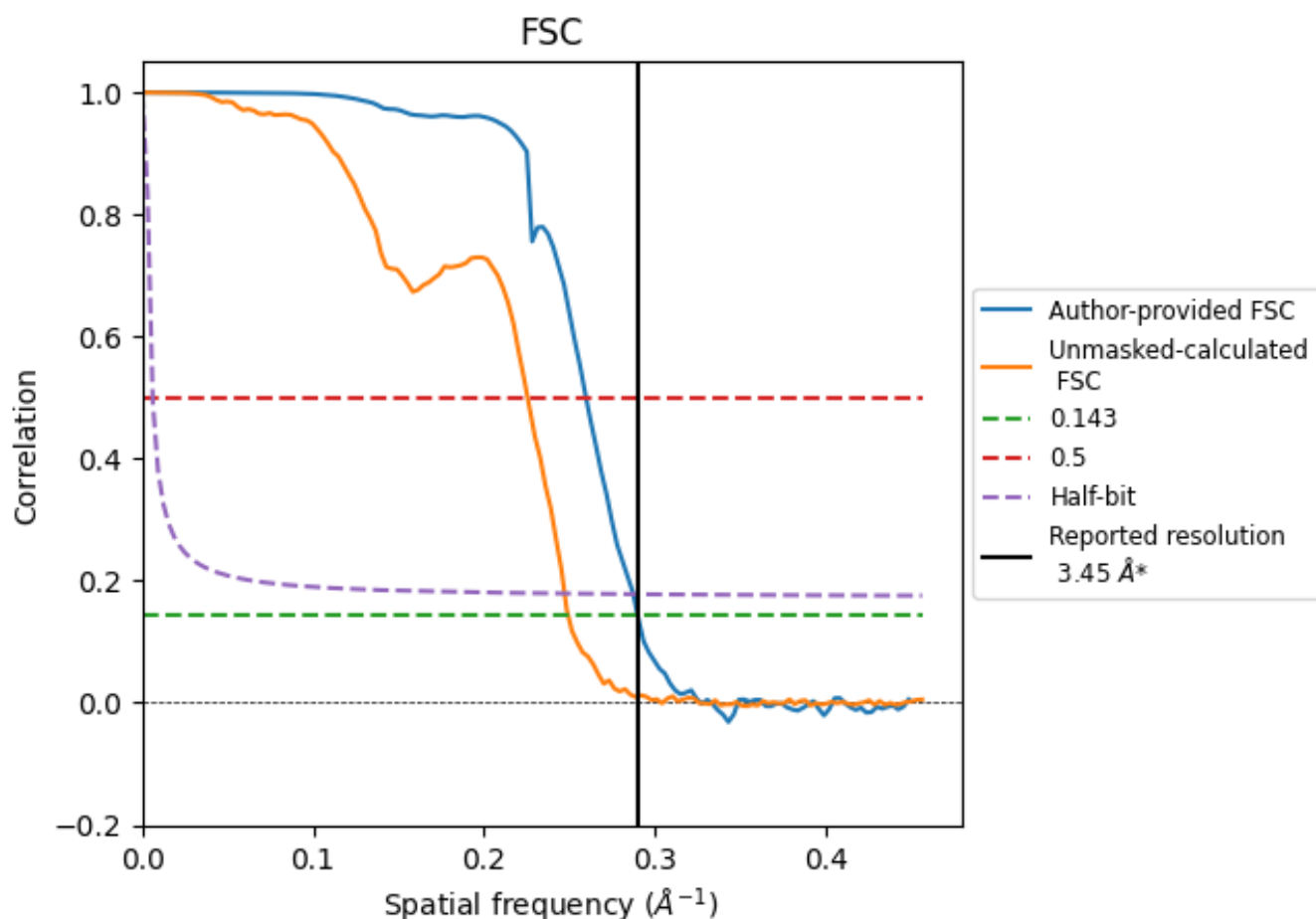


*Reported resolution corresponds to spatial frequency of 0.290 \AA^{-1}

8 Fourier-Shell correlation [i](#)

Fourier-Shell Correlation (FSC) is the most commonly used method to estimate the resolution of single-particle and subtomogram-averaged maps. The shape of the curve depends on the imposed symmetry, mask and whether or not the two 3D reconstructions used were processed from a common reference. The reported resolution is shown as a black line. A curve is displayed for the half-bit criterion in addition to lines showing the 0.143 gold standard cut-off and 0.5 cut-off.

8.1 FSC [i](#)



*Reported resolution corresponds to spatial frequency of 0.290 \AA^{-1}

8.2 Resolution estimates [i](#)

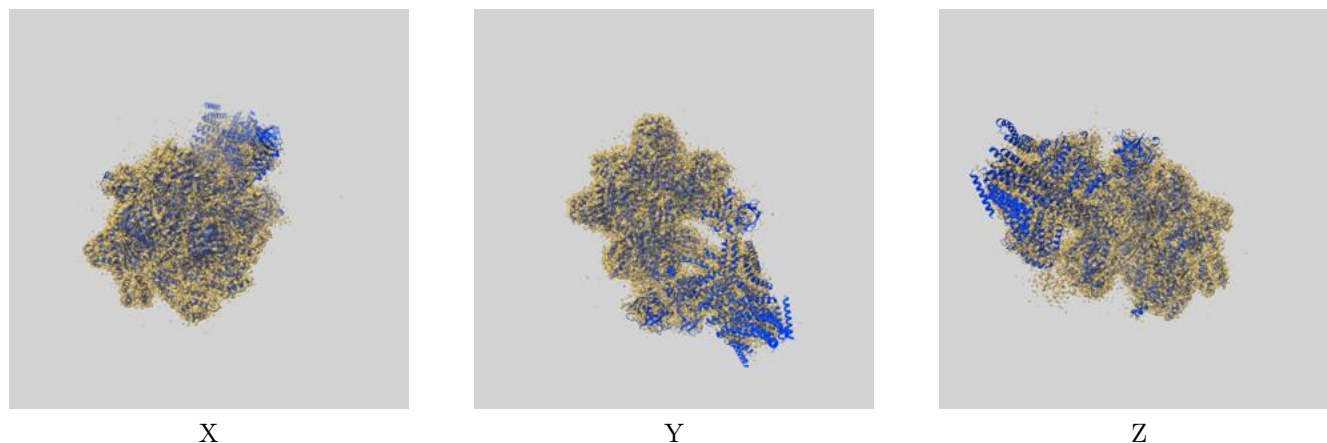
Resolution estimate (Å)	Estimation criterion (FSC cut-off)		
	0.143	0.5	Half-bit
Reported by author	3.45	-	-
Author-provided FSC curve	3.45	3.85	3.48
Unmasked-calculated*	4.01	4.43	4.05

*Resolution estimate based on FSC curve calculated by comparison of deposited half-maps. The value from deposited half-maps intersecting FSC 0.143 CUT-OFF 4.01 differs from the reported value 3.45 by more than 10 %

9 Map-model fit [i](#)

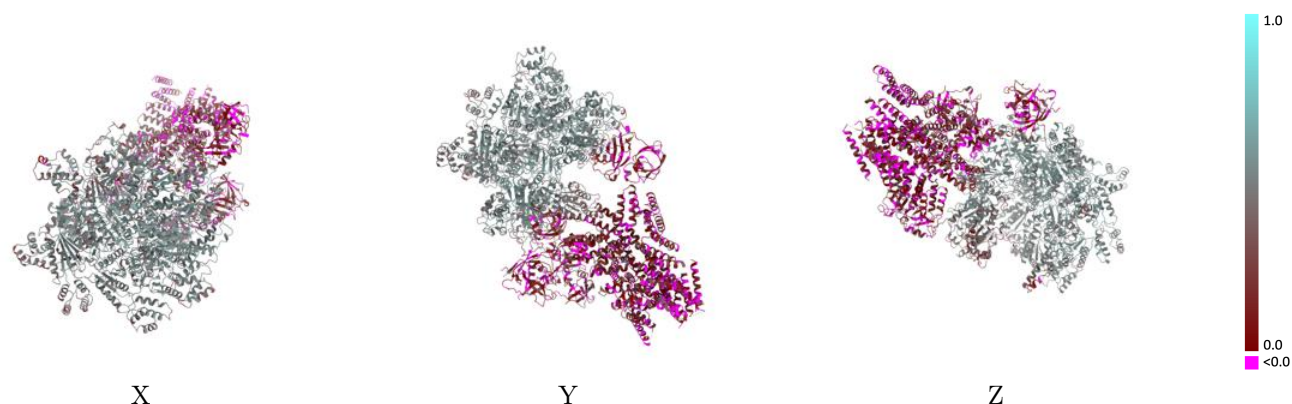
This section contains information regarding the fit between EMDB map EMD-71458 and PDB model 9PB9. Per-residue inclusion information can be found in section [3](#) on page [9](#).

9.1 Map-model overlay [i](#)



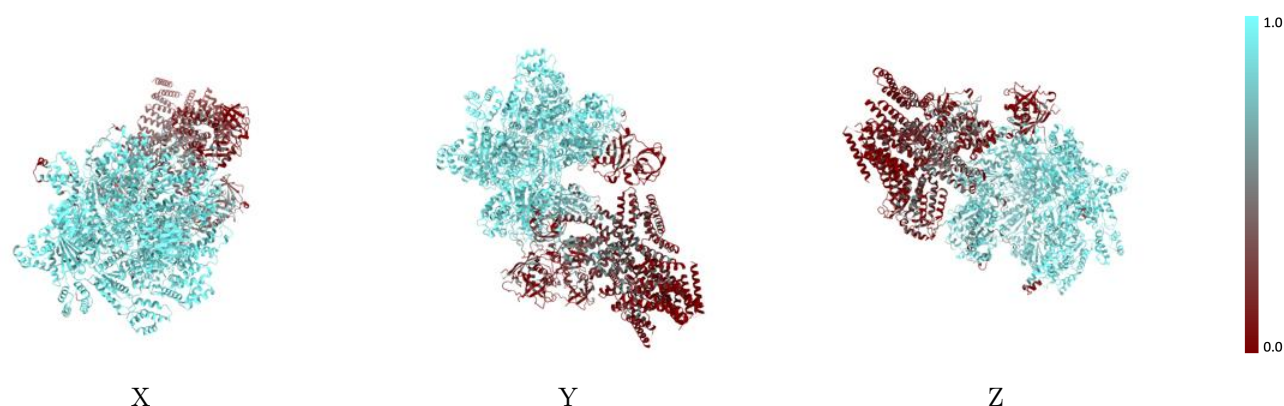
The images above show the 3D surface view of the map at the recommended contour level 0.3 at 50% transparency in yellow overlaid with a ribbon representation of the model coloured in blue. These images allow for the visual assessment of the quality of fit between the atomic model and the map.

9.2 Q-score mapped to coordinate model [i](#)



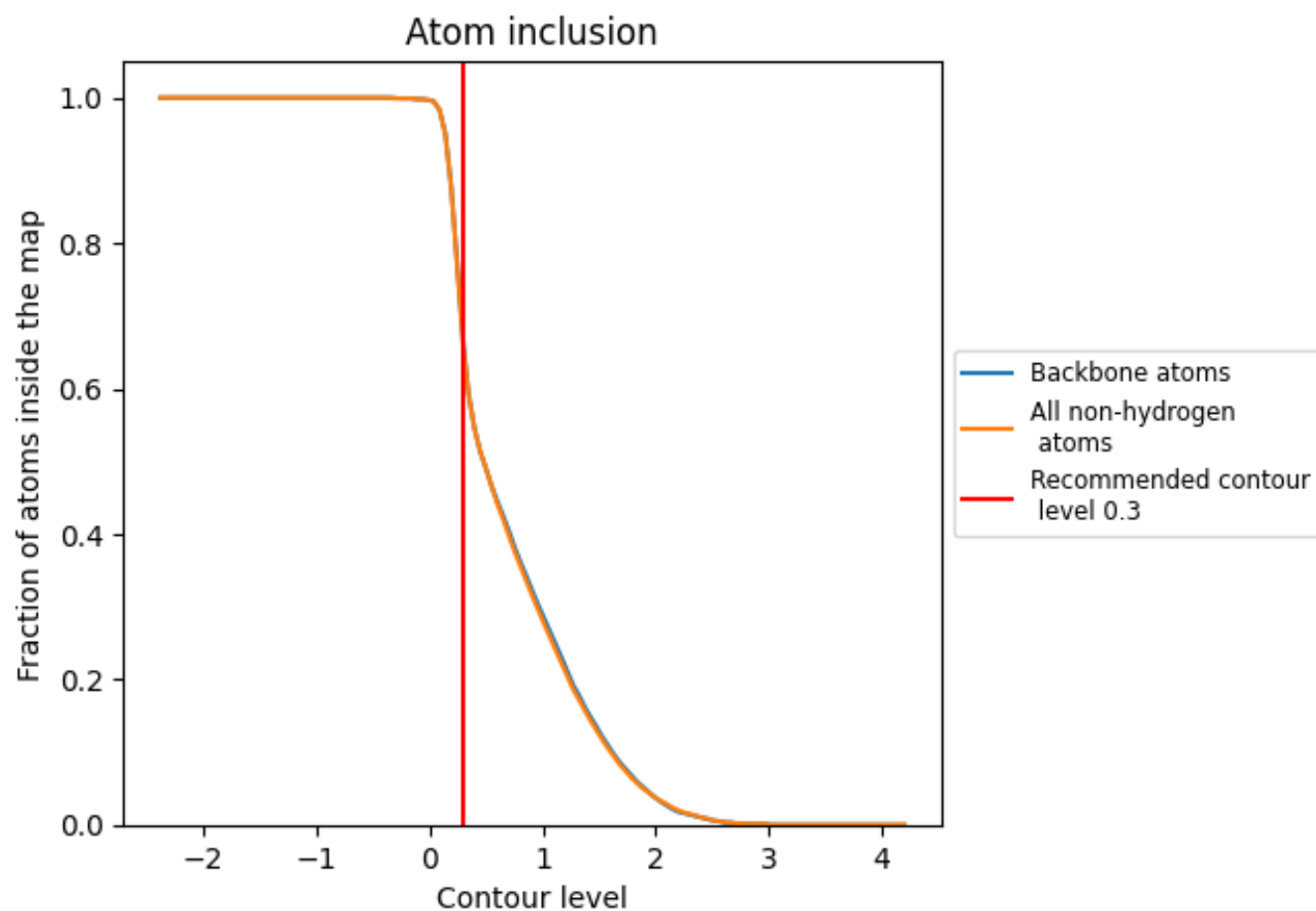
The images above show the model with each residue coloured according to its Q-score. This shows their resolvability in the map with higher Q-score values reflecting better resolvability. Please note: Q-score is calculating the resolvability of atoms, and thus high values are only expected at resolutions at which atoms can be resolved. Low Q-score values may therefore be expected for many entries.

9.3 Atom inclusion mapped to coordinate model [i](#)



The images above show the model with each residue coloured according to its atom inclusion. This shows to what extent they are inside the map at the recommended contour level (0.3).

9.4 Atom inclusion [i](#)



At the recommended contour level, 66% of all backbone atoms, 65% of all non-hydrogen atoms, are inside the map.

9.5 Map-model fit summary ⓘ

The table lists the average atom inclusion at the recommended contour level (0.3) and Q-score for the entire model and for each chain.

Chain	Atom inclusion	Q-score
All	<div></div> 0.6540	<div></div> 0.3640
A	<div></div> 0.9110	<div></div> 0.5090
B	<div></div> 0.7250	<div></div> 0.4280
C	<div></div> 0.7860	<div></div> 0.4440
D	<div></div> 0.7430	<div></div> 0.4210
E	<div></div> 0.7380	<div></div> 0.4040
F	<div></div> 0.8510	<div></div> 0.4240
G	<div></div> 0.2190	<div></div> 0.1000
H	<div></div> 0.3820	<div></div> 0.1770
I	<div></div> 0.2640	<div></div> 0.1220
J	<div></div> 0.1450	<div></div> 0.0990
K	<div></div> 0.2730	<div></div> 0.1290
L	<div></div> 0.1590	<div></div> 0.1020

1.0

0.0

<0.0