



Full wwPDB X-ray Structure Validation Report ⓘ

Sep 2, 2025 – 12:30 PM EDT

PDB ID : 9OWA / pdb_00009owa
Title : Human WRN helicase in complex with allosteric ligand Compound 2
Authors : Palte, R.L.; Koglin, M.; Maskos, K.; Tauchert, M.J.
Deposited on : 2025-06-02
Resolution : 1.98 Å(reported)

This is a Full wwPDB X-ray Structure Validation Report for a publicly released PDB entry.

We welcome your comments at validation@mail.wwpdb.org

A user guide is available at

<https://www.wwpdb.org/validation/2017/XrayValidationReportHelp>

with specific help available everywhere you see the ⓘ symbol.

The types of validation reports are described at

<http://www.wwpdb.org/validation/2017/FAQs#types>.

The following versions of software and data (see [references ⓘ](#)) were used in the production of this report:

MolProbity : 4-5-2 with Phenix2.0rc1
Mogul : 2022.3.0, CSD as543be (2022)
Xtriage (Phenix) : 2.0rc1
EDS : 3.0
buster-report : 1.1.7 (2018)
Percentile statistics : 20231227.v01 (using entries in the PDB archive December 27th 2023)
CCP4 : 9.0.006 (Gargrove)
Density-Fitness : 1.0.12
Ideal geometry (proteins) : Engh & Huber (2001)
Ideal geometry (DNA, RNA) : Parkinson et al. (1996)
Validation Pipeline (wwPDB-VP) : 2.45.1

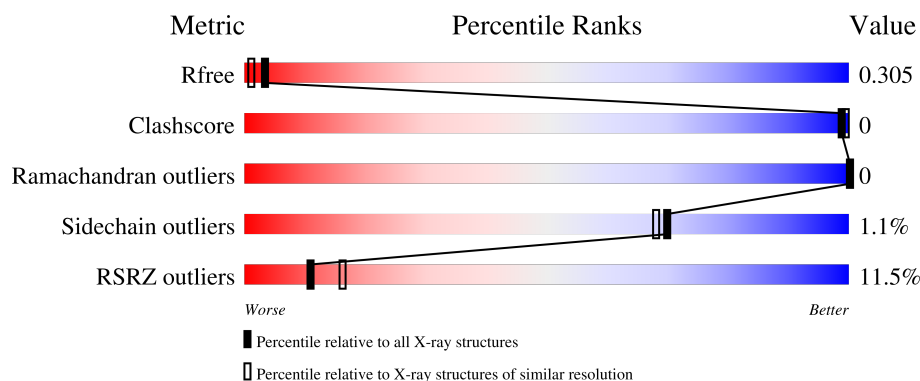
1 Overall quality at a glance

The following experimental techniques were used to determine the structure:

X-RAY DIFFRACTION

The reported resolution of this entry is 1.98 Å.

Percentile scores (ranging between 0-100) for global validation metrics of the entry are shown in the following graphic. The table shows the number of entries on which the scores are based.



Metric	Whole archive (#Entries)	Similar resolution (#Entries, resolution range(Å))
R_{free}	164625	1356 (1.98-1.98)
Clashscore	180529	1437 (1.98-1.98)
Ramachandran outliers	177936	1426 (1.98-1.98)
Sidechain outliers	177891	1426 (1.98-1.98)
RSRZ outliers	164620	1356 (1.98-1.98)

The table below summarises the geometric issues observed across the polymeric chains and their fit to the electron density. The red, orange, yellow and green segments of the lower bar indicate the fraction of residues that contain outliers for ≥ 3 , 2, 1 and 0 types of geometric quality criteria respectively. A grey segment represents the fraction of residues that are not modelled. The numeric value for each fraction is indicated below the corresponding segment, with a dot representing fractions $\leq 5\%$. The upper red bar (where present) indicates the fraction of residues that have poor fit to the electron density. The numeric value is given above the bar.

Mol	Chain	Length	Quality of chain
1	A	443	

2 Entry composition [i](#)

There are 6 unique types of molecules in this entry. The entry contains 3494 atoms, of which 0 are hydrogens and 0 are deuteriums.

In the tables below, the ZeroOcc column contains the number of atoms modelled with zero occupancy, the AltConf column contains the number of residues with at least one atom in alternate conformation and the Trace column contains the number of residues modelled with at most 2 atoms.

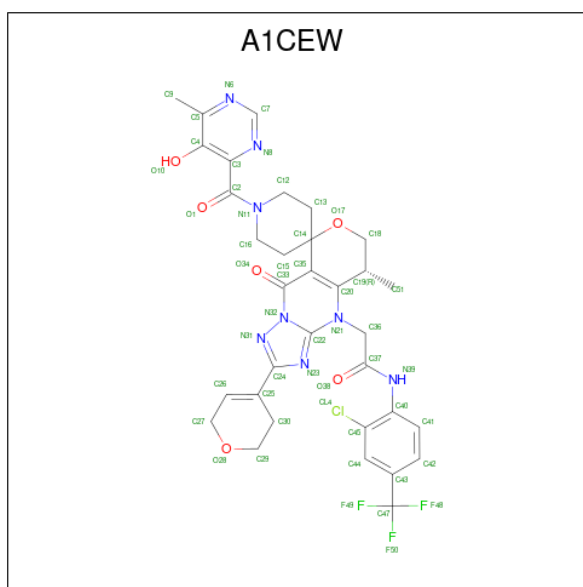
- Molecule 1 is a protein called Bifunctional 3'-5' exonuclease/ATP-dependent helicase WRN.

Mol	Chain	Residues	Atoms					ZeroOcc	AltConf	Trace
1	A	419	Total	C	N	O	S	23	1	0
			3344	2116	590	609	29			

- Molecule 2 is ZINC ION (CCD ID: ZN) (formula: Zn).

Mol	Chain	Residues	Atoms		ZeroOcc	AltConf
2	A	1	Total	Zn	0	0
			1	1		

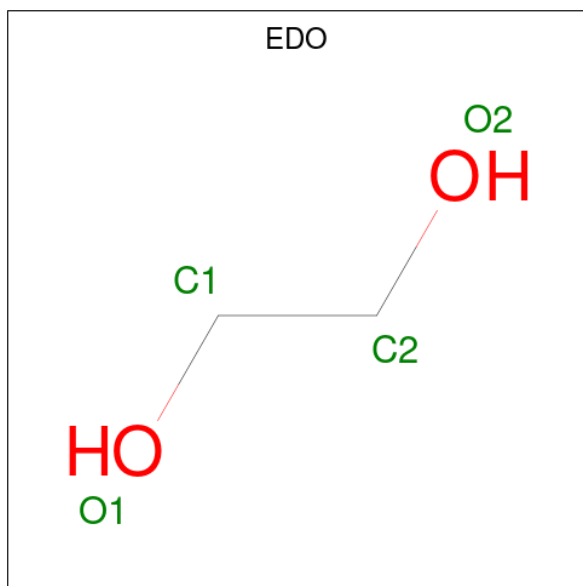
- Molecule 3 is N-[2-chloro-4-(trifluoromethyl)phenyl]-2-[(5'R,10'R)-2'-(3,6-dihydro-2H-pyran-4-yl)-1-(5-hydroxy-6-methylpyrimidine-4-carbonyl)-5'-methyl-9'-oxo-5',9'-dihydrospiro[pyridine-4,8'-pyrano[4,3-d][1,2,4]triazolo[1,5-a]pyrimidin]-4'(6'H)-yl]acetamide (CCD ID: A1CEW) (formula: C₃₃H₃₂ClF₃N₈O₆) (labeled as "Ligand of Interest" by depositor).



- Molecule 4 is CHLORIDE ION (CCD ID: CL) (formula: Cl).

Mol	Chain	Residues	Atoms	ZeroOcc	AltConf
4	A	1	Total Cl 1 1	0	0

- Molecule 5 is 1,2-ETHANEDIOL (CCD ID: EDO) (formula: C₂H₆O₂).



Mol	Chain	Residues	Atoms	ZeroOcc	AltConf
5	A	1	Total C O 4 2 2	0	0
5	A	1	Total C O 4 2 2	0	0
5	A	1	Total C O 4 2 2	0	0

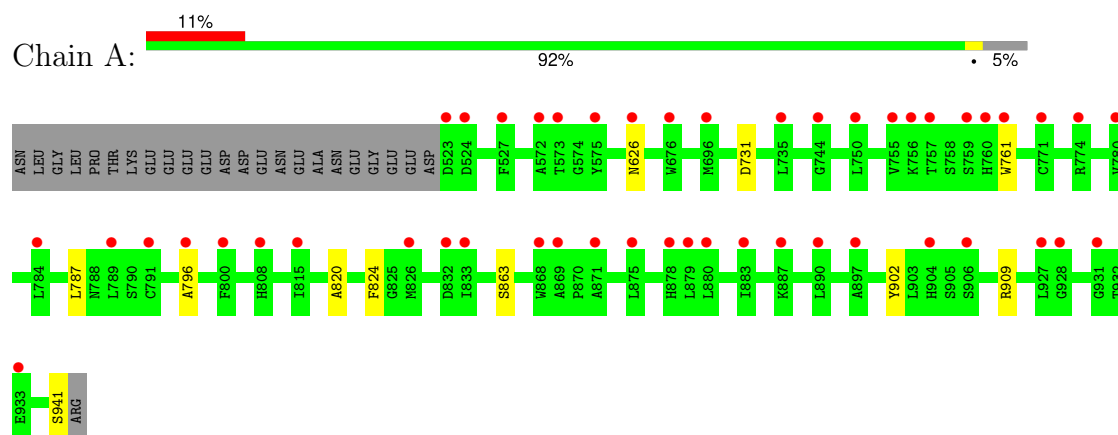
- Molecule 6 is water.

Mol	Chain	Residues	Atoms	ZeroOcc	AltConf
6	A	72	Total O 74 74	0	2

3 Residue-property plots [i](#)

These plots are drawn for all protein, RNA, DNA and oligosaccharide chains in the entry. The first graphic for a chain summarises the proportions of the various outlier classes displayed in the second graphic. The second graphic shows the sequence view annotated by issues in geometry and electron density. Residues are color-coded according to the number of geometric quality criteria for which they contain at least one outlier: green = 0, yellow = 1, orange = 2 and red = 3 or more. A red dot above a residue indicates a poor fit to the electron density ($RSRZ > 2$). Stretches of 2 or more consecutive residues without any outlier are shown as a green connector. Residues present in the sample, but not in the model, are shown in grey.

- Molecule 1: Bifunctional 3'-5' exonuclease/ATP-dependent helicase WRN



4 Data and refinement statistics

Property	Value	Source
Space group	P 21 21 21	Depositor
Cell constants a, b, c, α , β , γ	57.06Å 57.95Å 132.39Å 90.00° 90.00° 90.00°	Depositor
Resolution (Å)	38.90 – 1.98 38.90 – 1.98	Depositor EDS
% Data completeness (in resolution range)	76.7 (38.90-1.98) 76.7 (38.90-1.98)	Depositor EDS
R_{merge}	(Not available)	Depositor
R_{sym}	(Not available)	Depositor
$\langle I/\sigma(I) \rangle$ ¹	1.74 (at 1.98Å)	Xtriage
Refinement program	REFMAC 5.8.0267	Depositor
R, R_{free}	0.254 , 0.306 0.255 , 0.305	Depositor DCC
R_{free} test set	2429 reflections (7.70%)	wwPDB-VP
Wilson B-factor (Å ²)	36.2	Xtriage
Anisotropy	0.404	Xtriage
Bulk solvent k_{sol} (e/Å ³), B_{sol} (Å ²)	0.31 , 23.5	EDS
L-test for twinning ²	$\langle L \rangle = 0.47$, $\langle L^2 \rangle = 0.30$	Xtriage
Estimated twinning fraction	0.054 for k,h,-l	Xtriage
F_o, F_c correlation	0.93	EDS
Total number of atoms	3494	wwPDB-VP
Average B, all atoms (Å ²)	50.0	wwPDB-VP

Xtriage's analysis on translational NCS is as follows: *The largest off-origin peak in the Patterson function is 6.88% of the height of the origin peak. No significant pseudotranslation is detected.*

¹Intensities estimated from amplitudes.

²Theoretical values of $\langle |L| \rangle$, $\langle L^2 \rangle$ for acentric reflections are 0.5, 0.333 respectively for untwinned datasets, and 0.375, 0.2 for perfectly twinned datasets.

5 Model quality [i](#)

5.1 Standard geometry [i](#)

Bond lengths and bond angles in the following residue types are not validated in this section: ZN, EDO, CL, A1CEW

The Z score for a bond length (or angle) is the number of standard deviations the observed value is removed from the expected value. A bond length (or angle) with $|Z| > 5$ is considered an outlier worth inspection. RMSZ is the root-mean-square of all Z scores of the bond lengths (or angles).

Mol	Chain	Bond lengths		Bond angles	
		RMSZ	$\# Z > 5$	RMSZ	$\# Z > 5$
1	A	1.05	0/3413	1.50	2/4606 (0.0%)

There are no bond length outliers.

All (2) bond angle outliers are listed below:

Mol	Chain	Res	Type	Atoms	Z	Observed($^{\circ}$)	Ideal($^{\circ}$)
1	A	796	ALA	CA-C-N	5.26	126.76	120.13
1	A	796	ALA	C-N-CA	5.26	126.76	120.13

There are no chirality outliers.

There are no planarity outliers.

5.2 Too-close contacts [i](#)

In the following table, the Non-H and H(model) columns list the number of non-hydrogen atoms and hydrogen atoms in the chain respectively. The H(added) column lists the number of hydrogen atoms added and optimized by MolProbity. The Clashes column lists the number of clashes within the asymmetric unit, whereas Symm-Clashes lists symmetry-related clashes.

Mol	Chain	Non-H	H(model)	H(added)	Clashes	Symm-Clashes
1	A	3344	0	3362	3	0
2	A	1	0	0	0	0
3	A	62	0	0	0	0
4	A	1	0	0	0	0
5	A	12	0	18	0	0
6	A	74	0	0	0	0
All	All	3494	0	3380	3	0

The all-atom clashscore is defined as the number of clashes found per 1000 atoms (including

hydrogen atoms). The all-atom clashscore for this structure is 0.

All (3) close contacts within the same asymmetric unit are listed below, sorted by their clash magnitude.

Atom-1	Atom-2	Interatomic distance (Å)	Clash overlap (Å)
1:A:902:TYR:O	1:A:909:ARG:NH1	2.45	0.43
1:A:761:TRP:HB2	1:A:787:LEU:HB3	2.01	0.42
1:A:820:ALA:HB1	1:A:824:PHE:HB3	2.02	0.41

There are no symmetry-related clashes.

5.3 Torsion angles [i](#)

5.3.1 Protein backbone [i](#)

In the following table, the Percentiles column shows the percent Ramachandran outliers of the chain as a percentile score with respect to all X-ray entries followed by that with respect to entries of similar resolution.

The Analysed column shows the number of residues for which the backbone conformation was analysed, and the total number of residues.

Mol	Chain	Analysed	Favoured	Allowed	Outliers	Percentiles	
1	A	418/443 (94%)	408 (98%)	10 (2%)	0	100	100

There are no Ramachandran outliers to report.

5.3.2 Protein sidechains [i](#)

In the following table, the Percentiles column shows the percent sidechain outliers of the chain as a percentile score with respect to all X-ray entries followed by that with respect to entries of similar resolution.

The Analysed column shows the number of residues for which the sidechain conformation was analysed, and the total number of residues.

Mol	Chain	Analysed	Rotameric	Outliers	Percentiles	
1	A	372/392 (95%)	368 (99%)	4 (1%)	70	68

All (4) residues with a non-rotameric sidechain are listed below:

Mol	Chain	Res	Type
1	A	626	ASN
1	A	731	ASP
1	A	863	SER
1	A	941	SER

Sometimes sidechains can be flipped to improve hydrogen bonding and reduce clashes. All (5) such sidechains are listed below:

Mol	Chain	Res	Type
1	A	546	HIS
1	A	835	GLN
1	A	861	GLN
1	A	865	HIS
1	A	911	GLN

5.3.3 RNA [i](#)

There are no RNA molecules in this entry.

5.4 Non-standard residues in protein, DNA, RNA chains [i](#)

There are no non-standard protein/DNA/RNA residues in this entry.

5.5 Carbohydrates [i](#)

There are no oligosaccharides in this entry.

5.6 Ligand geometry [i](#)

Of 7 ligands modelled in this entry, 2 are monoatomic - leaving 5 for Mogul analysis.

In the following table, the Counts columns list the number of bonds (or angles) for which Mogul statistics could be retrieved, the number of bonds (or angles) that are observed in the model and the number of bonds (or angles) that are defined in the Chemical Component Dictionary. The Link column lists molecule types, if any, to which the group is linked. The Z score for a bond length (or angle) is the number of standard deviations the observed value is removed from the expected value. A bond length (or angle) with $|Z| > 2$ is considered an outlier worth inspection. RMSZ is the root-mean-square of all Z scores of the bond lengths (or angles).

Mol	Type	Chain	Res	Link	Bond lengths			Bond angles		
					Counts	RMSZ	$\# Z > 2$	Counts	RMSZ	$\# Z > 2$
5	EDO	A	1004	-	3,3,3	0.09	0	2,2,2	0.22	0

Mol	Type	Chain	Res	Link	Bond lengths			Bond angles		
					Counts	RMSZ	# Z > 2	Counts	RMSZ	# Z > 2
5	EDO	A	1006	-	3,3,3	0.09	0	2,2,2	0.25	0
3	A1CEW	A	1002[A]	-	47,57,57	1.03	4 (8%)	53,87,87	1.93	12 (22%)
5	EDO	A	1005	-	3,3,3	0.09	0	2,2,2	0.16	0
3	A1CEW	A	1002[B]	-	47,57,57	1.00	4 (8%)	53,87,87	1.92	13 (24%)

In the following table, the Chirals column lists the number of chiral outliers, the number of chiral centers analysed, the number of these observed in the model and the number defined in the Chemical Component Dictionary. Similar counts are reported in the Torsion and Rings columns. '-' means no outliers of that kind were identified.

Mol	Type	Chain	Res	Link	Chirals	Torsions	Rings
5	EDO	A	1004	-	-	0/1/1/1	-
5	EDO	A	1006	-	-	1/1/1/1	-
3	A1CEW	A	1002[A]	-	-	1/22/62/62	0/6/7/7
5	EDO	A	1005	-	-	0/1/1/1	-
3	A1CEW	A	1002[B]	-	-	3/22/62/62	0/6/7/7

All (8) bond length outliers are listed below:

Mol	Chain	Res	Type	Atoms	Z	Observed(Å)	Ideal(Å)
3	A	1002[A]	A1CEW	C3-C2	-3.34	1.48	1.51
3	A	1002[A]	A1CEW	C24-N31	-2.43	1.31	1.34
3	A	1002[B]	A1CEW	C24-N31	-2.43	1.31	1.34
3	A	1002[A]	A1CEW	C22-N23	-2.21	1.31	1.35
3	A	1002[B]	A1CEW	C22-N23	-2.21	1.31	1.35
3	A	1002[B]	A1CEW	C3-C2	-2.12	1.49	1.51
3	A	1002[A]	A1CEW	F49-C47	2.01	1.40	1.33
3	A	1002[B]	A1CEW	F49-C47	2.01	1.40	1.33

All (25) bond angle outliers are listed below:

Mol	Chain	Res	Type	Atoms	Z	Observed(°)	Ideal(°)
3	A	1002[A]	A1CEW	N31-C24-N23	-7.55	108.46	114.72
3	A	1002[B]	A1CEW	N31-C24-N23	-7.55	108.46	114.72
3	A	1002[B]	A1CEW	N8-C7-N6	-4.29	122.09	128.58
3	A	1002[A]	A1CEW	N8-C7-N6	-3.92	122.65	128.58
3	A	1002[A]	A1CEW	O28-C27-C26	-3.47	110.34	113.32
3	A	1002[B]	A1CEW	O28-C27-C26	-3.47	110.34	113.32
3	A	1002[A]	A1CEW	C44-C45-C40	-3.44	119.03	121.77
3	A	1002[B]	A1CEW	C44-C45-C40	-3.44	119.03	121.77
3	A	1002[A]	A1CEW	C45-C40-N39	3.07	123.98	119.25

Continued on next page...

Continued from previous page...

Mol	Chain	Res	Type	Atoms	Z	Observed(°)	Ideal(°)
3	A	1002[B]	A1CEW	C45-C40-N39	3.07	123.98	119.25
3	A	1002[A]	A1CEW	C19-C20-N21	2.75	119.70	117.37
3	A	1002[B]	A1CEW	C19-C20-N21	2.75	119.70	117.37
3	A	1002[A]	A1CEW	F49-C47-C43	-2.62	107.28	112.90
3	A	1002[B]	A1CEW	F49-C47-C43	-2.62	107.28	112.90
3	A	1002[A]	A1CEW	C41-C40-N39	-2.61	115.78	121.82
3	A	1002[B]	A1CEW	C41-C40-N39	-2.61	115.78	121.82
3	A	1002[A]	A1CEW	C16-N11-C12	2.59	117.97	112.68
3	A	1002[A]	A1CEW	C40-C45-CL4	2.58	122.32	119.52
3	A	1002[B]	A1CEW	C40-C45-CL4	2.58	122.32	119.52
3	A	1002[B]	A1CEW	C16-N11-C12	2.22	117.21	112.68
3	A	1002[A]	A1CEW	C36-N21-C20	2.10	123.64	120.76
3	A	1002[B]	A1CEW	C36-N21-C20	2.10	123.64	120.76
3	A	1002[B]	A1CEW	C7-N8-C3	2.07	120.87	116.72
3	A	1002[A]	A1CEW	F48-C47-C43	-2.04	108.53	112.90
3	A	1002[B]	A1CEW	F48-C47-C43	-2.04	108.53	112.90

There are no chirality outliers.

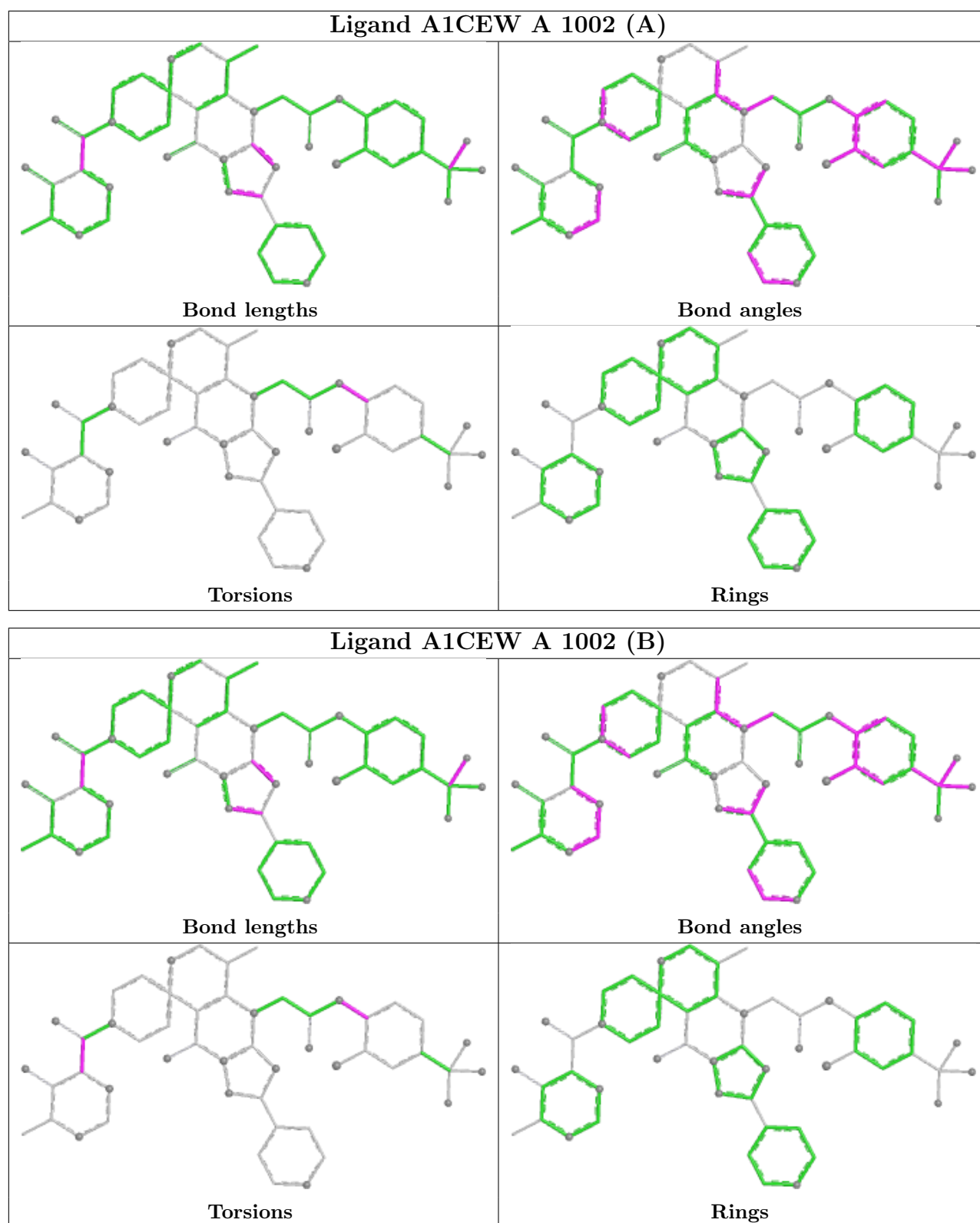
All (5) torsion outliers are listed below:

Mol	Chain	Res	Type	Atoms
5	A	1006	EDO	O1-C1-C2-O2
3	A	1002[A]	A1CEW	C45-C40-N39-C37
3	A	1002[B]	A1CEW	C45-C40-N39-C37
3	A	1002[B]	A1CEW	O1-C2-C3-N8
3	A	1002[B]	A1CEW	N11-C2-C3-N8

There are no ring outliers.

No monomer is involved in short contacts.

The following is a two-dimensional graphical depiction of Mogul quality analysis of bond lengths, bond angles, torsion angles, and ring geometry for all instances of the Ligand of Interest. In addition, ligands with molecular weight > 250 and outliers as shown on the validation Tables will also be included. For torsion angles, if less than 5% of the Mogul distribution of torsion angles is within 10 degrees of the torsion angle in question, then that torsion angle is considered an outlier. Any bond that is central to one or more torsion angles identified as an outlier by Mogul will be highlighted in the graph. For rings, the root-mean-square deviation (RMSD) between the ring in question and similar rings identified by Mogul is calculated over all ring torsion angles. If the average RMSD is greater than 60 degrees and the minimal RMSD between the ring in question and any Mogul-identified rings is also greater than 60 degrees, then that ring is considered an outlier. The outliers are highlighted in purple. The color gray indicates Mogul did not find sufficient equivalents in the CSD to analyse the geometry.



5.7 Other polymers [i](#)

There are no such residues in this entry.

5.8 Polymer linkage issues ⓘ

There are no chain breaks in this entry.

6 Fit of model and data

6.1 Protein, DNA and RNA chains

In the following table, the column labelled ‘#RSRZ> 2’ contains the number (and percentage) of RSRZ outliers, followed by percent RSRZ outliers for the chain as percentile scores relative to all X-ray entries and entries of similar resolution. The OWAB column contains the minimum, median, 95th percentile and maximum values of the occupancy-weighted average B-factor per residue. The column labelled ‘Q< 0.9’ lists the number of (and percentage) of residues with an average occupancy less than 0.9.

Mol	Chain	Analysed	<RSRZ>	#RSRZ>2		OWAB(Å ²)	Q<0.9
1	A	419/443 (94%)	0.91	48 (11%)	11 16	24, 46, 78, 96	8 (1%)

All (48) RSRZ outliers are listed below:

Mol	Chain	Res	Type	RSRZ
1	A	927	LEU	4.3
1	A	744	GLY	4.0
1	A	880	LEU	3.9
1	A	869	ALA	3.8
1	A	868	TRP	3.8
1	A	928	GLY	3.7
1	A	761	TRP	3.4
1	A	759	SER	3.2
1	A	875	LEU	3.0
1	A	523	ASP	2.9
1	A	879	LEU	2.8
1	A	883	ILE	2.8
1	A	871	ALA	2.8
1	A	676	TRP	2.8
1	A	696	MET	2.7
1	A	796	ALA	2.7
1	A	931	GLY	2.7
1	A	815	ILE	2.6
1	A	784	LEU	2.6
1	A	572	ALA	2.6
1	A	878	HIS	2.6
1	A	771	CYS	2.5
1	A	800	PHE	2.5
1	A	808	HIS	2.5
1	A	760	HIS	2.4
1	A	575	TYR	2.4
1	A	789	LEU	2.4

Continued on next page...

Continued from previous page...

Mol	Chain	Res	Type	RSRZ
1	A	933	GLU	2.4
1	A	897	ALA	2.4
1	A	573	THR	2.4
1	A	735	LEU	2.3
1	A	780	VAL	2.3
1	A	626	ASN	2.3
1	A	890	LEU	2.3
1	A	755	VAL	2.3
1	A	524	ASP	2.3
1	A	832	ASP	2.2
1	A	904	HIS	2.2
1	A	791	CYS	2.2
1	A	527	PHE	2.2
1	A	774	ARG	2.2
1	A	757	THR	2.1
1	A	756	LYS	2.1
1	A	887	LYS	2.1
1	A	750	LEU	2.1
1	A	906	SER	2.1
1	A	833	ILE	2.1
1	A	826	MET	2.0

6.2 Non-standard residues in protein, DNA, RNA chains [i](#)

There are no non-standard protein/DNA/RNA residues in this entry.

6.3 Carbohydrates [i](#)

There are no oligosaccharides in this entry.

6.4 Ligands [i](#)

In the following table, the Atoms column lists the number of modelled atoms in the group and the number defined in the chemical component dictionary. The B-factors column lists the minimum, median, 95th percentile and maximum values of B factors of atoms in the group. The column labelled 'Q< 0.9' lists the number of atoms with occupancy less than 0.9.

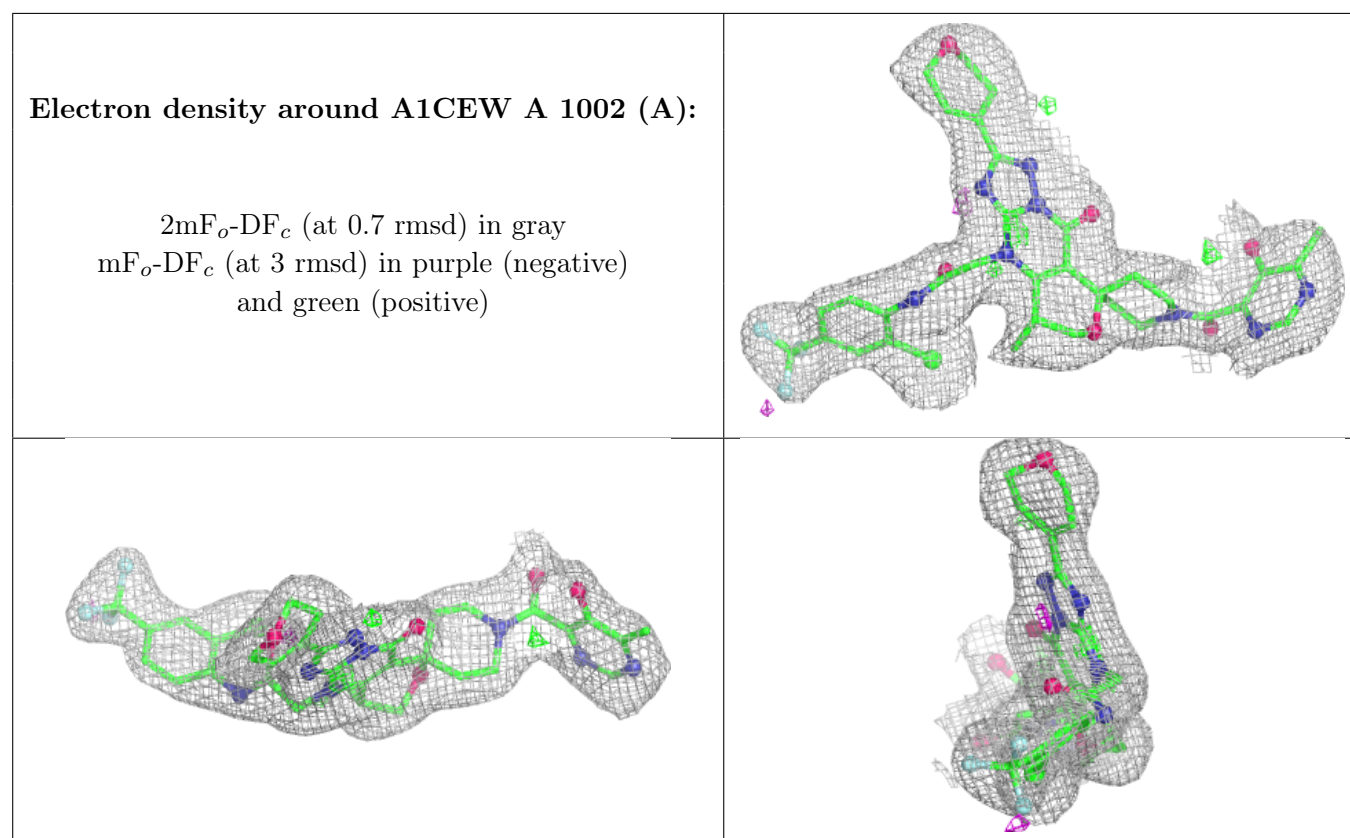
Mol	Type	Chain	Res	Atoms	RSCC	RSR	B-factors(\AA^2)	Q<0.9
5	EDO	A	1004	4/4	0.66	0.16	73,74,75,76	0
5	EDO	A	1005	4/4	0.81	0.20	61,62,62,63	0

Continued on next page...

Continued from previous page...

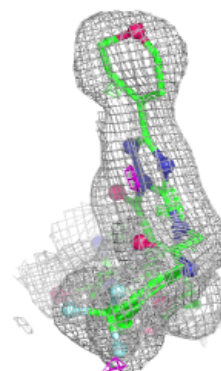
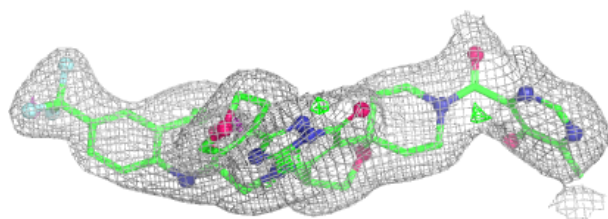
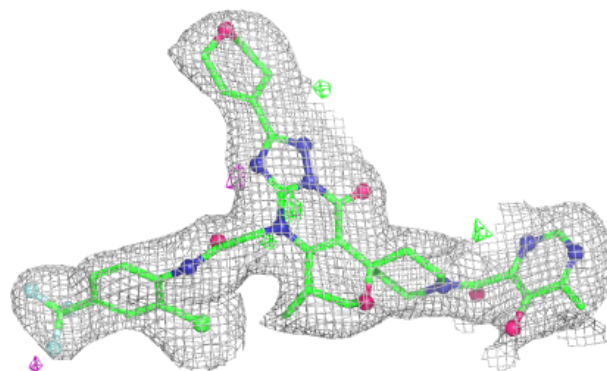
Mol	Type	Chain	Res	Atoms	RSCC	RSR	B-factors(\AA^2)	Q<0.9
4	CL	A	1003	1/1	0.84	0.12	70,70,70,70	0
5	EDO	A	1006	4/4	0.85	0.18	54,55,56,58	0
3	A1CEW	A	1002[A]	51/51	0.91	0.10	31,36,42,43	11
3	A1CEW	A	1002[B]	51/51	0.91	0.10	31,36,41,43	11
2	ZN	A	1001	1/1	0.98	0.03	42,42,42,42	0

The following is a graphical depiction of the model fit to experimental electron density of all instances of the Ligand of Interest. In addition, ligands with molecular weight > 250 and outliers as shown on the geometry validation Tables will also be included. Each fit is shown from different orientation to approximate a three-dimensional view.



Electron density around A1CEW A 1002 (B):

$2mF_o-DF_c$ (at 0.7 rmsd) in gray
 mF_o-DF_c (at 3 rmsd) in purple (negative)
and green (positive)



6.5 Other polymers [i](#)

There are no such residues in this entry.