



Full wwPDB X-ray Structure Validation Report ⓘ

Nov 17, 2025 – 12:27 PM EST

PDB ID : 9OR2 / pdb_00009or2
Title : Antarctic Rhodopsin crystallized in bicelles at pH 4.0
Authors : Besaw, J.E.; Peng, S.; Ernst, O.P.
Deposited on : 2025-05-21
Resolution : 2.07 Å(reported)

This is a Full wwPDB X-ray Structure Validation Report for a publicly released PDB entry.

We welcome your comments at validation@mail.wwpdb.org

A user guide is available at

<https://www.wwpdb.org/validation/2017/XrayValidationReportHelp>

with specific help available everywhere you see the ⓘ symbol.

The types of validation reports are described at

<http://www.wwpdb.org/validation/2017/FAQs#types>.

The following versions of software and data (see [references ⓘ](#)) were used in the production of this report:

MolProbity : 4-5-2 with Phenix2.0
Mogul : 2022.3.0, CSD as543be (2022)
Xtriage (Phenix) : 2.0
EDS : 3.0
buster-report : 1.1.7 (2018)
Percentile statistics : 20231227.v01 (using entries in the PDB archive December 27th 2023)
CCP4 : 9.0.010 (Gargrove)
Density-Fitness : 1.0.12
Ideal geometry (proteins) : Engh & Huber (2001)
Ideal geometry (DNA, RNA) : Parkinson et al. (1996)
Validation Pipeline (wwPDB-VP) : 2.46

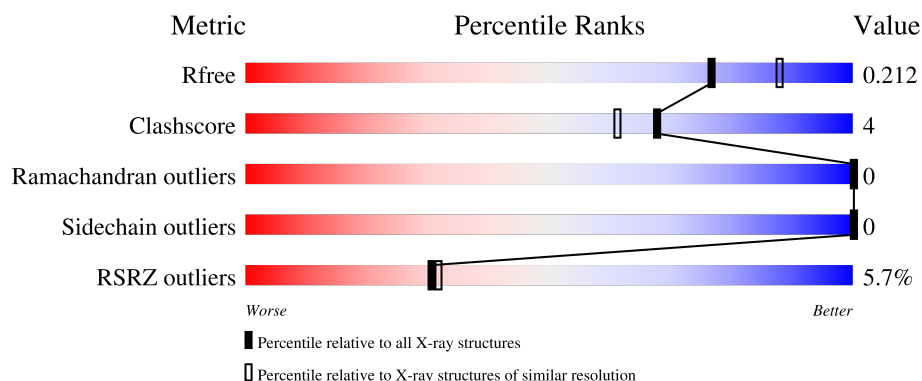
1 Overall quality at a glance

The following experimental techniques were used to determine the structure:

X-RAY DIFFRACTION

The reported resolution of this entry is 2.07 Å.

Percentile scores (ranging between 0-100) for global validation metrics of the entry are shown in the following graphic. The table shows the number of entries on which the scores are based.



Metric	Whole archive (#Entries)	Similar resolution (#Entries, resolution range(Å))
R_{free}	164625	3436 (2.08-2.04)
Clashscore	180529	3661 (2.08-2.04)
Ramachandran outliers	177936	3649 (2.08-2.04)
Sidechain outliers	177891	3649 (2.08-2.04)
RSRZ outliers	164620	3436 (2.08-2.04)

The table below summarises the geometric issues observed across the polymeric chains and their fit to the electron density. The red, orange, yellow and green segments of the lower bar indicate the fraction of residues that contain outliers for ≥ 3 , 2, 1 and 0 types of geometric quality criteria respectively. A grey segment represents the fraction of residues that are not modelled. The numeric value for each fraction is indicated below the corresponding segment, with a dot representing fractions $\leq 5\%$. The upper red bar (where present) indicates the fraction of residues that have poor fit to the electron density. The numeric value is given above the bar.

Mol	Chain	Length	Quality of chain
1	AA1	223	

2 Entry composition [i](#)

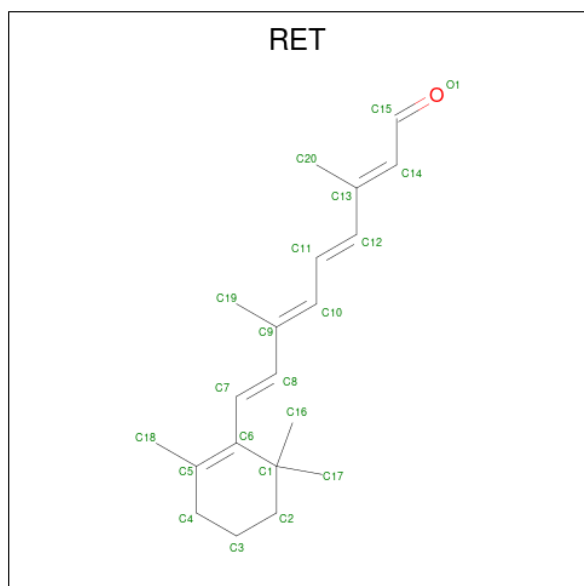
There are 5 unique types of molecules in this entry. The entry contains 1832 atoms, of which 0 are hydrogens and 0 are deuteriums.

In the tables below, the ZeroOcc column contains the number of atoms modelled with zero occupancy, the AltConf column contains the number of residues with at least one atom in alternate conformation and the Trace column contains the number of residues modelled with at most 2 atoms.

- Molecule 1 is a protein called Antarctic Rhodopsin.

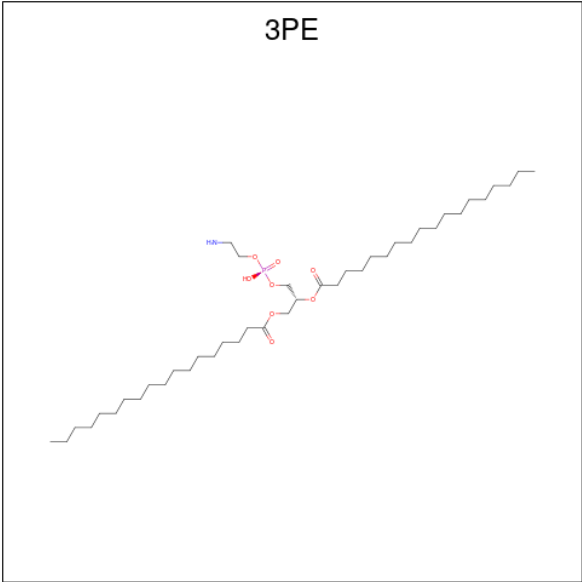
Mol	Chain	Residues	Atoms					ZeroOcc	AltConf	Trace
1	AA1	210	Total	C	N	O	S	0	0	0
			1651	1117	249	279	6			

- Molecule 2 is RETINAL (CCD ID: RET) (formula: C₂₀H₂₈O) (labeled as "Ligand of Interest" by depositor).



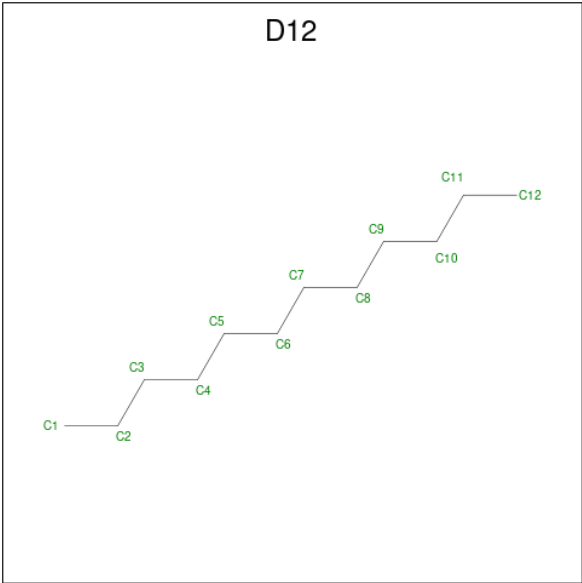
Mol	Chain	Residues	Atoms		ZeroOcc	AltConf
2	AA1	1	Total	C	0	0
			20	20		

- Molecule 3 is 1,2-Distearoyl-sn-glycerophosphoethanolamine (CCD ID: 3PE) (formula: C₄₁H₈₂NO₈P).



Mol	Chain	Residues	Atoms				ZeroOcc	AltConf
3	AA1	1	Total	C	O	P	0	0
			34	25	8	1		
3	AA1	1	Total	C	O	P	0	0
			40	31	8	1		

- Molecule 4 is DODECANE (CCD ID: D12) (formula: C₁₂H₂₆).



Mol	Chain	Residues	Atoms		ZeroOcc	AltConf
4	AA1	1	Total	C	0	0
			12	12		
4	AA1	1	Total	C	0	0
			12	12		

Continued on next page...

Continued from previous page...

Mol	Chain	Residues	Atoms		ZeroOcc	AltConf
4	AA1	1	Total	C	0	0
			12	12		

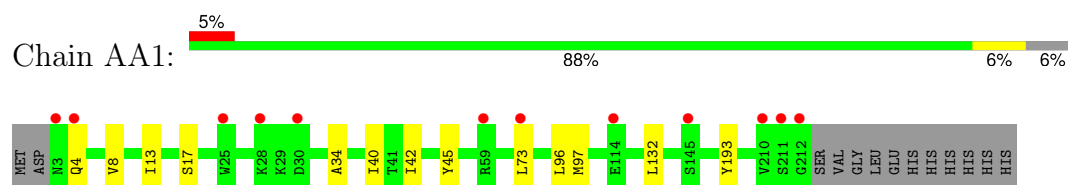
- Molecule 5 is water.

Mol	Chain	Residues	Atoms		ZeroOcc	AltConf
5	AA1	51	Total	O	0	0
			51	51		

3 Residue-property plots [i](#)

These plots are drawn for all protein, RNA, DNA and oligosaccharide chains in the entry. The first graphic for a chain summarises the proportions of the various outlier classes displayed in the second graphic. The second graphic shows the sequence view annotated by issues in geometry and electron density. Residues are color-coded according to the number of geometric quality criteria for which they contain at least one outlier: green = 0, yellow = 1, orange = 2 and red = 3 or more. A red dot above a residue indicates a poor fit to the electron density ($RSRZ > 2$). Stretches of 2 or more consecutive residues without any outlier are shown as a green connector. Residues present in the sample, but not in the model, are shown in grey.

- Molecule 1: Antarctic Rhodopsin



4 Data and refinement statistics

Property	Value	Source
Space group	P 3 2 1	Depositor
Cell constants a, b, c, α , β , γ	108.36Å 108.36Å 54.73Å 90.00° 90.00° 120.00°	Depositor
Resolution (Å)	29.76 – 2.07 29.76 – 2.07	Depositor EDS
% Data completeness (in resolution range)	99.1 (29.76-2.07) 99.0 (29.76-2.07)	Depositor EDS
R_{merge}	(Not available)	Depositor
R_{sym}	(Not available)	Depositor
$\langle I/\sigma(I) \rangle$ ¹	1.27 (at 2.06Å)	Xtriage
Refinement program	PHENIX 1.15.2_3472	Depositor
R, R_{free}	0.201 , 0.211 0.202 , 0.212	Depositor DCC
R_{free} test set	1997 reflections (8.73%)	wwPDB-VP
Wilson B-factor (Å ²)	34.7	Xtriage
Anisotropy	0.103	Xtriage
Bulk solvent k_{sol} (e/Å ³), B_{sol} (Å ²)	0.38 , 50.9	EDS
L-test for twinning ²	$\langle L \rangle = 0.51$, $\langle L^2 \rangle = 0.35$	Xtriage
Estimated twinning fraction	0.030 for -h,-k,l	Xtriage
F_o, F_c correlation	0.94	EDS
Total number of atoms	1832	wwPDB-VP
Average B, all atoms (Å ²)	35.0	wwPDB-VP

Xtriage's analysis on translational NCS is as follows: *The largest off-origin peak in the Patterson function is 7.49% of the height of the origin peak. No significant pseudotranslation is detected.*

¹Intensities estimated from amplitudes.

²Theoretical values of $\langle |L| \rangle$, $\langle L^2 \rangle$ for acentric reflections are 0.5, 0.333 respectively for untwinned datasets, and 0.375, 0.2 for perfectly twinned datasets.

5 Model quality

5.1 Standard geometry

Bond lengths and bond angles in the following residue types are not validated in this section: RET, D12, 3PE

The Z score for a bond length (or angle) is the number of standard deviations the observed value is removed from the expected value. A bond length (or angle) with $|Z| > 5$ is considered an outlier worth inspection. RMSZ is the root-mean-square of all Z scores of the bond lengths (or angles).

Mol	Chain	Bond lengths		Bond angles	
		RMSZ	$\# Z > 5$	RMSZ	$\# Z > 5$
1	AA1	0.74	0/1696	0.78	0/2305

There are no bond length outliers.

There are no bond angle outliers.

There are no chirality outliers.

There are no planarity outliers.

5.2 Too-close contacts

In the following table, the Non-H and H(model) columns list the number of non-hydrogen atoms and hydrogen atoms in the chain respectively. The H(added) column lists the number of hydrogen atoms added and optimized by MolProbity. The Clashes column lists the number of clashes within the asymmetric unit, whereas Symm-Clashes lists symmetry-related clashes.

Mol	Chain	Non-H	H(model)	H(added)	Clashes	Symm-Clashes
1	AA1	1651	0	1689	9	0
2	AA1	20	0	27	3	0
3	AA1	74	0	94	2	0
4	AA1	36	0	78	3	0
5	AA1	51	0	0	0	0
All	All	1832	0	1888	13	0

The all-atom clashscore is defined as the number of clashes found per 1000 atoms (including hydrogen atoms). The all-atom clashscore for this structure is 4.

All (13) close contacts within the same asymmetric unit are listed below, sorted by their clash magnitude.

Atom-1	Atom-2	Interatomic distance (Å)	Clash overlap (Å)
1:AA1:97:MET:SD	4:AA1:305:D12:H82	2.43	0.59
3:AA1:302:3PE:H321	4:AA1:303:D12:H72	1.86	0.58
2:AA1:301:RET:H161	2:AA1:301:RET:H8	1.91	0.53
1:AA1:4:GLN:H	1:AA1:4:GLN:CD	2.18	0.52
1:AA1:96:LEU:HD22	1:AA1:132:LEU:HD12	1.91	0.51
1:AA1:97:MET:HE1	4:AA1:306:D12:H72	1.93	0.50
1:AA1:8:VAL:HG22	3:AA1:302:3PE:H351	1.93	0.50
1:AA1:40:ILE:HD13	1:AA1:73:LEU:HG	1.98	0.46
2:AA1:301:RET:H161	2:AA1:301:RET:C8	2.48	0.43
2:AA1:301:RET:H181	2:AA1:301:RET:H7	1.77	0.42
1:AA1:17:SER:HA	1:AA1:42:ILE:HD11	2.02	0.41
1:AA1:13:ILE:HG13	1:AA1:45:TYR:HB3	2.03	0.41
1:AA1:34:ALA:HA	1:AA1:193:TYR:CE2	2.56	0.40

There are no symmetry-related clashes.

5.3 Torsion angles [i](#)

5.3.1 Protein backbone [i](#)

In the following table, the Percentiles column shows the percent Ramachandran outliers of the chain as a percentile score with respect to all X-ray entries followed by that with respect to entries of similar resolution.

The Analysed column shows the number of residues for which the backbone conformation was analysed, and the total number of residues.

Mol	Chain	Analysed	Favoured	Allowed	Outliers	Percentiles	
1	AA1	208/223 (93%)	203 (98%)	5 (2%)	0	100	100

There are no Ramachandran outliers to report.

5.3.2 Protein sidechains [i](#)

In the following table, the Percentiles column shows the percent sidechain outliers of the chain as a percentile score with respect to all X-ray entries followed by that with respect to entries of similar resolution.

The Analysed column shows the number of residues for which the sidechain conformation was analysed, and the total number of residues.

Mol	Chain	Analysed	Rotameric	Outliers	Percentiles	
1	AA1	170/182 (93%)	170 (100%)	0	100	100

There are no protein residues with a non-rotameric sidechain to report.

Sometimes sidechains can be flipped to improve hydrogen bonding and reduce clashes. There are no such sidechains identified.

5.3.3 RNA ⓘ

There are no RNA molecules in this entry.

5.4 Non-standard residues in protein, DNA, RNA chains ⓘ

There are no non-standard protein/DNA/RNA residues in this entry.

5.5 Carbohydrates ⓘ

There are no oligosaccharides in this entry.

5.6 Ligand geometry ⓘ

6 ligands are modelled in this entry.

In the following table, the Counts columns list the number of bonds (or angles) for which Mogul statistics could be retrieved, the number of bonds (or angles) that are observed in the model and the number of bonds (or angles) that are defined in the Chemical Component Dictionary. The Link column lists molecule types, if any, to which the group is linked. The Z score for a bond length (or angle) is the number of standard deviations the observed value is removed from the expected value. A bond length (or angle) with $|Z| > 2$ is considered an outlier worth inspection. RMSZ is the root-mean-square of all Z scores of the bond lengths (or angles).

Mol	Type	Chain	Res	Link	Bond lengths			Bond angles		
					Counts	RMSZ	$\# Z > 2$	Counts	RMSZ	$\# Z > 2$
4	D12	AA1	305	-	11,11,11	0.67	0	10,10,10	1.06	0
4	D12	AA1	306	-	11,11,11	0.47	0	10,10,10	1.07	0
3	3PE	AA1	304	-	39,39,50	1.45	4 (10%)	42,44,55	1.49	3 (7%)
3	3PE	AA1	302	-	33,33,50	1.85	4 (12%)	36,38,55	1.81	3 (8%)
4	D12	AA1	303	-	11,11,11	0.33	0	10,10,10	1.15	0
2	RET	AA1	301	1	20,20,21	0.77	1 (5%)	27,27,28	0.69	1 (3%)

In the following table, the Chirals column lists the number of chiral outliers, the number of chiral

centers analysed, the number of these observed in the model and the number defined in the Chemical Component Dictionary. Similar counts are reported in the Torsion and Rings columns. '-' means no outliers of that kind were identified.

Mol	Type	Chain	Res	Link	Chirals	Torsions	Rings
4	D12	AA1	305	-	-	0/9/9/9	-
4	D12	AA1	306	-	-	1/9/9/9	-
3	3PE	AA1	304	-	-	19/41/41/54	-
3	3PE	AA1	302	-	-	10/35/35/54	-
4	D12	AA1	303	-	-	4/9/9/9	-
2	RET	AA1	301	1	-	0/13/30/31	0/1/1/1

All (9) bond length outliers are listed below:

Mol	Chain	Res	Type	Atoms	Z	Observed(Å)	Ideal(Å)
3	AA1	302	3PE	P-O13	7.20	1.81	1.54
3	AA1	304	3PE	P-O11	5.32	1.77	1.60
3	AA1	304	3PE	P-O13	4.41	1.71	1.54
3	AA1	302	3PE	P-O11	3.88	1.72	1.60
3	AA1	302	3PE	C1-C2	3.51	1.61	1.50
3	AA1	302	3PE	C22-C21	-3.46	1.40	1.50
3	AA1	304	3PE	O31-C31	3.40	1.43	1.33
2	AA1	301	RET	C14-C13	2.54	1.35	1.33
3	AA1	304	3PE	C1-C2	2.21	1.57	1.50

All (7) bond angle outliers are listed below:

Mol	Chain	Res	Type	Atoms	Z	Observed(°)	Ideal(°)
3	AA1	302	3PE	O13-P-O11	-7.07	88.22	106.67
3	AA1	304	3PE	O12-P-O14	6.65	136.73	110.83
3	AA1	302	3PE	O12-P-O14	5.42	131.95	110.83
3	AA1	304	3PE	O13-P-O11	-4.64	94.56	106.67
3	AA1	302	3PE	C23-C22-C21	-2.44	104.77	113.69
3	AA1	304	3PE	O13-P-O14	-2.41	101.46	110.83
2	AA1	301	RET	C8-C7-C6	2.38	133.37	127.00

There are no chirality outliers.

All (34) torsion outliers are listed below:

Mol	Chain	Res	Type	Atoms
3	AA1	304	3PE	C22-C21-O21-C2
3	AA1	304	3PE	O22-C21-O21-C2
3	AA1	304	3PE	C32-C31-O31-C3

Continued on next page...

Continued from previous page...

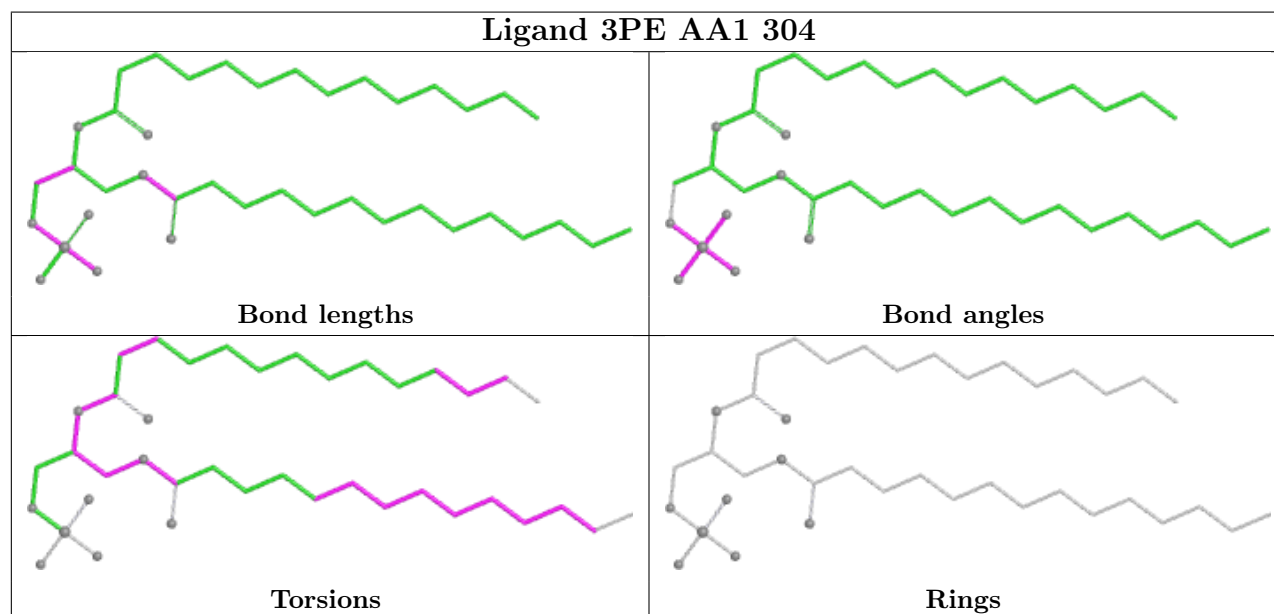
Mol	Chain	Res	Type	Atoms
3	AA1	304	3PE	C39-C3A-C3B-C3C
3	AA1	304	3PE	O32-C31-O31-C3
3	AA1	302	3PE	C22-C21-O21-C2
3	AA1	302	3PE	C21-C22-C23-C24
3	AA1	302	3PE	O22-C21-O21-C2
3	AA1	302	3PE	C32-C33-C34-C35
4	AA1	306	D12	C5-C6-C7-C8
4	AA1	303	D12	C6-C7-C8-C9
3	AA1	302	3PE	C22-C23-C24-C25
4	AA1	303	D12	C4-C5-C6-C7
4	AA1	303	D12	C5-C6-C7-C8
3	AA1	302	3PE	C31-C32-C33-C34
3	AA1	304	3PE	C37-C38-C39-C3A
3	AA1	302	3PE	C1-C2-C3-O31
3	AA1	304	3PE	C1-C2-C3-O31
3	AA1	304	3PE	C2A-C2B-C2C-C2D
3	AA1	304	3PE	C34-C35-C36-C37
3	AA1	304	3PE	C21-C22-C23-C24
3	AA1	302	3PE	O11-C1-C2-O21
3	AA1	304	3PE	C35-C36-C37-C38
3	AA1	304	3PE	C3B-C3C-C3D-C3E
3	AA1	304	3PE	C38-C39-C3A-C3B
3	AA1	302	3PE	O21-C2-C3-O31
3	AA1	304	3PE	O21-C2-C3-O31
3	AA1	304	3PE	C3A-C3B-C3C-C3D
4	AA1	303	D12	C2-C3-C4-C5
3	AA1	302	3PE	O11-C1-C2-C3
3	AA1	304	3PE	C2-C3-O31-C31
3	AA1	304	3PE	C36-C37-C38-C39
3	AA1	304	3PE	C2B-C2C-C2D-C2E
3	AA1	304	3PE	C3-C2-O21-C21

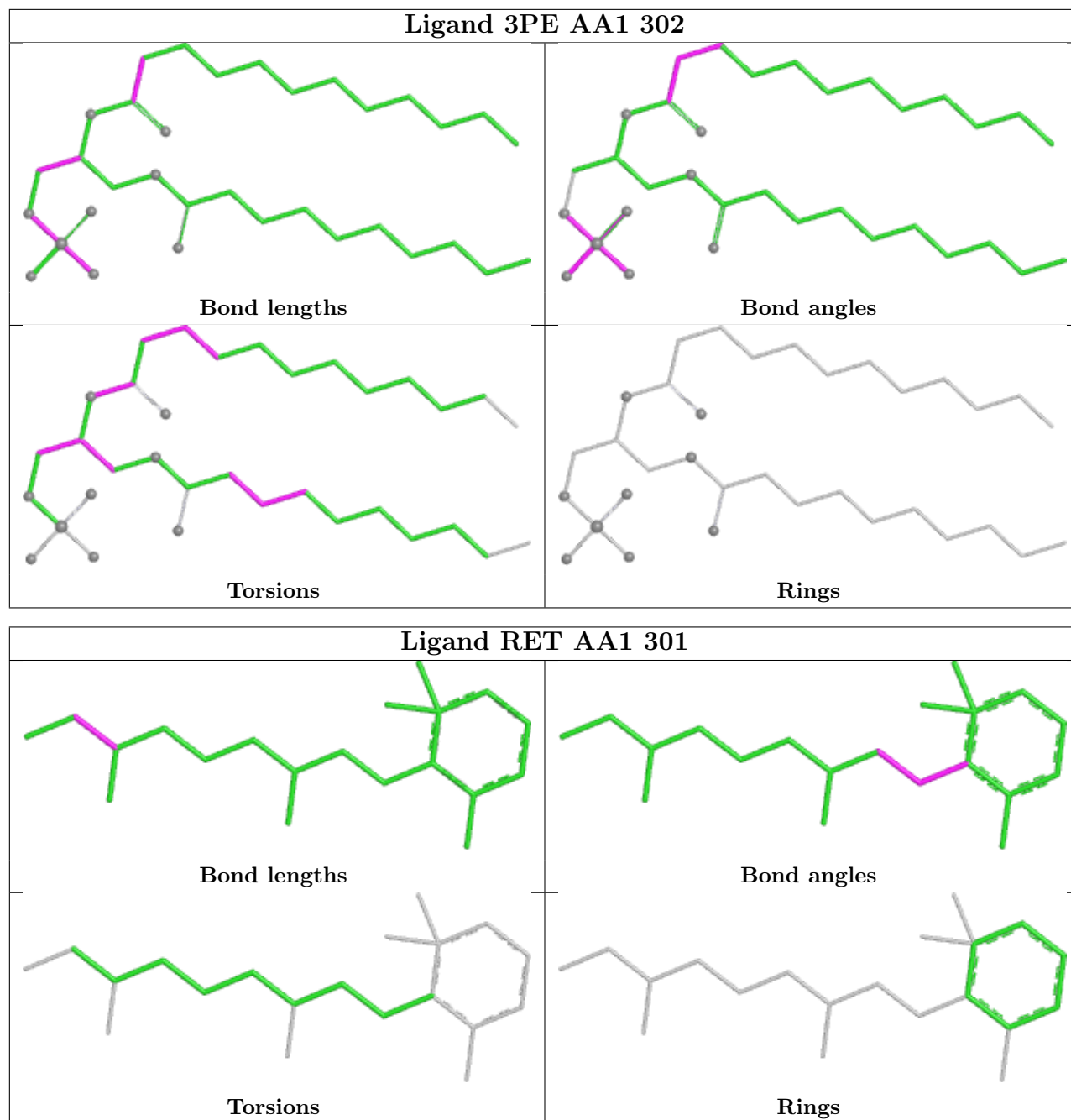
There are no ring outliers.

5 monomers are involved in 7 short contacts:

Mol	Chain	Res	Type	Clashes	Symm-Clashes
4	AA1	305	D12	1	0
4	AA1	306	D12	1	0
3	AA1	302	3PE	2	0
4	AA1	303	D12	1	0
2	AA1	301	RET	3	0

The following is a two-dimensional graphical depiction of Mogul quality analysis of bond lengths, bond angles, torsion angles, and ring geometry for all instances of the Ligand of Interest. In addition, ligands with molecular weight > 250 and outliers as shown on the validation Tables will also be included. For torsion angles, if less than 5% of the Mogul distribution of torsion angles is within 10 degrees of the torsion angle in question, then that torsion angle is considered an outlier. Any bond that is central to one or more torsion angles identified as an outlier by Mogul will be highlighted in the graph. For rings, the root-mean-square deviation (RMSD) between the ring in question and similar rings identified by Mogul is calculated over all ring torsion angles. If the average RMSD is greater than 60 degrees and the minimal RMSD between the ring in question and any Mogul-identified rings is also greater than 60 degrees, then that ring is considered an outlier. The outliers are highlighted in purple. The color gray indicates Mogul did not find sufficient equivalents in the CSD to analyse the geometry.





5.7 Other polymers [i](#)

There are no such residues in this entry.

5.8 Polymer linkage issues [i](#)

There are no chain breaks in this entry.

6 Fit of model and data [i](#)

6.1 Protein, DNA and RNA chains [i](#)

In the following table, the column labelled ‘#RSRZ > 2’ contains the number (and percentage) of RSRZ outliers, followed by percent RSRZ outliers for the chain as percentile scores relative to all X-ray entries and entries of similar resolution. The OWAB column contains the minimum, median, 95th percentile and maximum values of the occupancy-weighted average B-factor per residue. The column labelled ‘Q < 0.9’ lists the number of (and percentage) of residues with an average occupancy less than 0.9.

Mol	Chain	Analysed	<RSRZ>	#RSRZ>2	OWAB(Å ²)	Q<0.9
1	AA1	210/223 (94%)	0.10	12 (5%) 30 32	25, 32, 50, 63	0

All (12) RSRZ outliers are listed below:

Mol	Chain	Res	Type	RSRZ
1	AA1	28	LYS	4.0
1	AA1	3	ASN	3.4
1	AA1	4	GLN	3.3
1	AA1	145	SER	2.8
1	AA1	25	TRP	2.6
1	AA1	211	SER	2.5
1	AA1	210	VAL	2.4
1	AA1	114	GLU	2.3
1	AA1	212	GLY	2.3
1	AA1	59	ARG	2.3
1	AA1	30	ASP	2.3
1	AA1	73	LEU	2.1

6.2 Non-standard residues in protein, DNA, RNA chains [i](#)

There are no non-standard protein/DNA/RNA residues in this entry.

6.3 Carbohydrates [i](#)

There are no oligosaccharides in this entry.

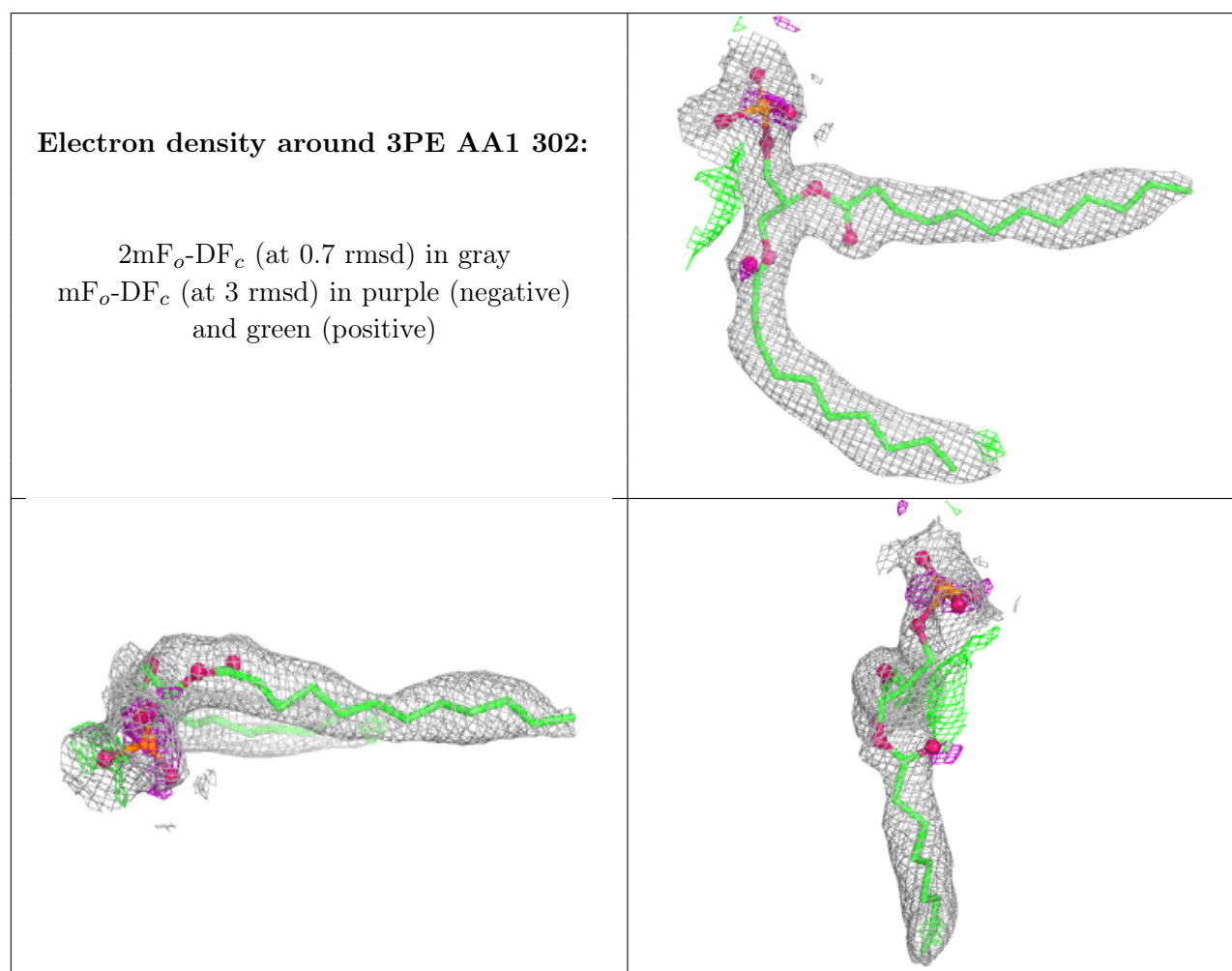
6.4 Ligands [i](#)

In the following table, the Atoms column lists the number of modelled atoms in the group and the number defined in the chemical component dictionary. The B-factors column lists the minimum,

median, 95th percentile and maximum values of B factors of atoms in the group. The column labelled 'Q< 0.9' lists the number of atoms with occupancy less than 0.9.

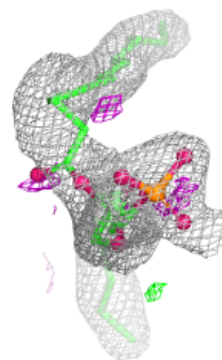
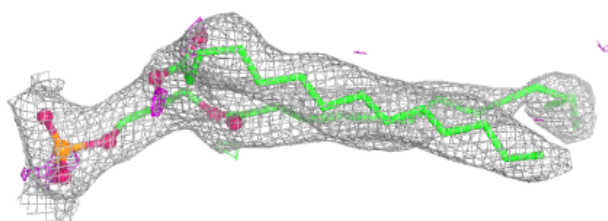
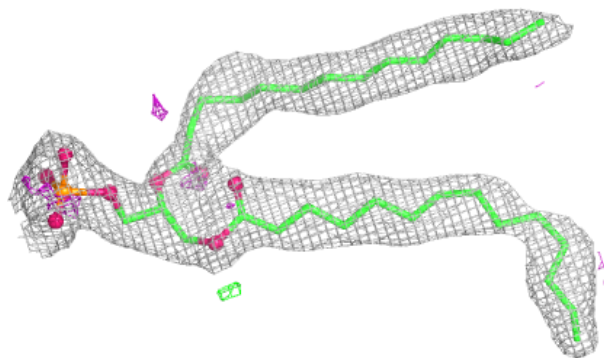
Mol	Type	Chain	Res	Atoms	RSCC	RSR	B-factors(Å ²)	Q<0.9
4	D12	AA1	306	12/12	0.84	0.15	39,44,46,47	0
4	D12	AA1	303	12/12	0.85	0.17	39,47,53,61	0
3	3PE	AA1	302	34/51	0.86	0.15	34,47,57,63	0
3	3PE	AA1	304	40/51	0.86	0.15	34,49,63,68	0
4	D12	AA1	305	12/12	0.87	0.12	36,44,51,55	0
2	RET	AA1	301	20/21	0.95	0.08	25,29,35,35	0

The following is a graphical depiction of the model fit to experimental electron density of all instances of the Ligand of Interest. In addition, ligands with molecular weight > 250 and outliers as shown on the geometry validation Tables will also be included. Each fit is shown from different orientation to approximate a three-dimensional view.

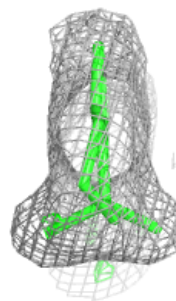
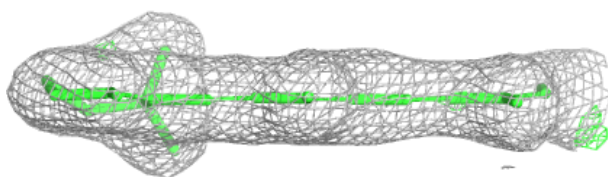
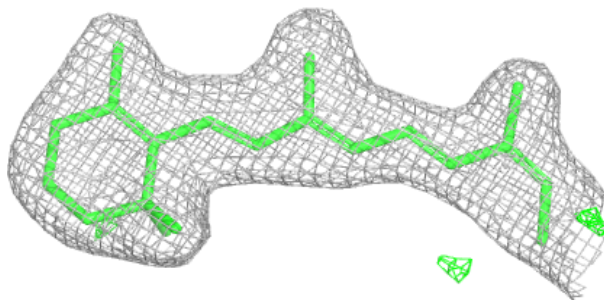


Electron density around 3PE AA1 304:

$2mF_o-DF_c$ (at 0.7 rmsd) in gray
 mF_o-DF_c (at 3 rmsd) in purple (negative)
and green (positive)

**Electron density around RET AA1 301:**

$2mF_o-DF_c$ (at 0.7 rmsd) in gray
 mF_o-DF_c (at 3 rmsd) in purple (negative)
and green (positive)



6.5 Other polymers [i](#)

There are no such residues in this entry.