



# Full wwPDB X-ray Structure Validation Report ⓘ

Aug 28, 2025 – 04:31 PM EDT

PDB ID : 9OQ9 / pdb\_00009oq9  
Title : Crystal structure of E. coli ApaH in complex with Ap4AGG  
Authors : Nuthanakanti, A.; Serganov, A.  
Deposited on : 2025-05-20  
Resolution : 1.96 Å(reported)

This is a Full wwPDB X-ray Structure Validation Report for a publicly released PDB entry.

We welcome your comments at [validation@mail.wwpdb.org](mailto:validation@mail.wwpdb.org)

A user guide is available at

<https://www.wwpdb.org/validation/2017/XrayValidationReportHelp>

with specific help available everywhere you see the ⓘ symbol.

The types of validation reports are described at

<http://www.wwpdb.org/validation/2017/FAQs#types>.

---

The following versions of software and data (see [references ⓘ](#)) were used in the production of this report:

MolProbity : 4-5-2 with Phenix2.0rc1  
Mogul : 2022.3.0, CSD as543be (2022)  
Xtriage (Phenix) : 2.0rc1  
EDS : 3.0  
buster-report : 1.1.7 (2018)  
Percentile statistics : 20231227.v01 (using entries in the PDB archive December 27th 2023)  
CCP4 : 9.0.006 (Gargrove)  
Density-Fitness : 1.0.12  
Ideal geometry (proteins) : Engh & Huber (2001)  
Ideal geometry (DNA, RNA) : Parkinson et al. (1996)  
Validation Pipeline (wwPDB-VP) : 2.45.1

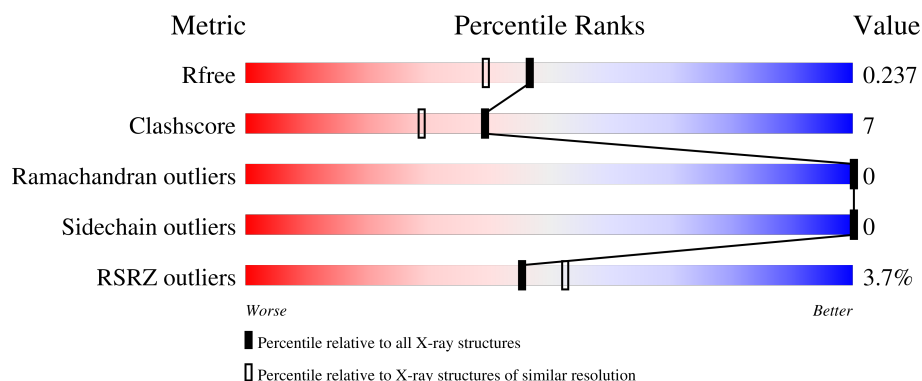
# 1 Overall quality at a glance

The following experimental techniques were used to determine the structure:

*X-RAY DIFFRACTION*

The reported resolution of this entry is 1.96 Å.

Percentile scores (ranging between 0-100) for global validation metrics of the entry are shown in the following graphic. The table shows the number of entries on which the scores are based.



Metric	Whole archive (#Entries)	Similar resolution (#Entries, resolution range(Å))
$R_{free}$	164625	3187 (1.96-1.96)
Clashscore	180529	3412 (1.96-1.96)
Ramachandran outliers	177936	3390 (1.96-1.96)
Sidechain outliers	177891	3390 (1.96-1.96)
RSRZ outliers	164620	3186 (1.96-1.96)

The table below summarises the geometric issues observed across the polymeric chains and their fit to the electron density. The red, orange, yellow and green segments of the lower bar indicate the fraction of residues that contain outliers for  $\geq 3$ , 2, 1 and 0 types of geometric quality criteria respectively. A grey segment represents the fraction of residues that are not modelled. The numeric value for each fraction is indicated below the corresponding segment, with a dot representing fractions  $\leq 5\%$ . The upper red bar (where present) indicates the fraction of residues that have poor fit to the electron density. The numeric value is given above the bar.

Mol	Chain	Length	Quality of chain
1	A	286	<div> <div>5%</div> <div> <div></div> <div>83%</div> <div>11%</div> <div>6%</div> </div> </div>
1	B	286	<div> <div>2%</div> <div> <div></div> <div>80%</div> <div>14%</div> <div>6%</div> </div> </div>

## 2 Entry composition

There are 6 unique types of molecules in this entry. The entry contains 4718 atoms, of which 17 are hydrogens and 0 are deuteriums.

In the tables below, the ZeroOcc column contains the number of atoms modelled with zero occupancy, the AltConf column contains the number of residues with at least one atom in alternate conformation and the Trace column contains the number of residues modelled with at most 2 atoms.

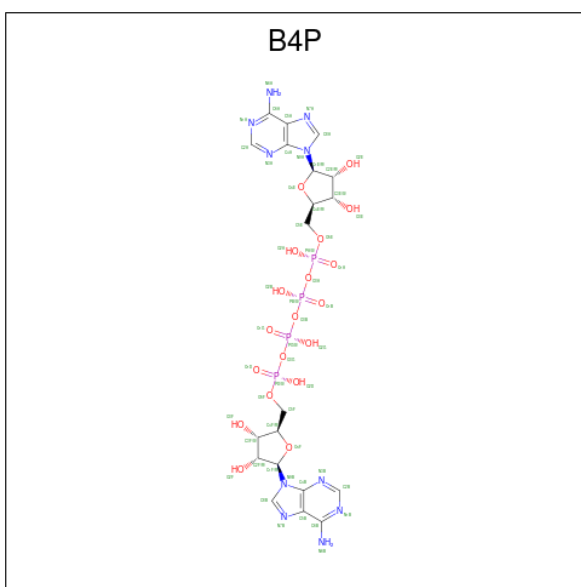
- Molecule 1 is a protein called Bis(5'-nucleosyl)-tetraphosphatase [symmetrical].

Mol	Chain	Residues	Atoms					ZeroOcc	AltConf	Trace
1	A	269	Total	C	N	O	S	0	0	0
			2102	1351	353	387	11			
1	B	269	Total	C	N	O	S	0	0	0
			2102	1348	358	385	11			

There are 12 discrepancies between the modelled and reference sequences:

Chain	Residue	Modelled	Actual	Comment	Reference
A	281	HIS	-	expression tag	UNP P05637
A	282	HIS	-	expression tag	UNP P05637
A	283	HIS	-	expression tag	UNP P05637
A	284	HIS	-	expression tag	UNP P05637
A	285	HIS	-	expression tag	UNP P05637
A	286	HIS	-	expression tag	UNP P05637
B	281	HIS	-	expression tag	UNP P05637
B	282	HIS	-	expression tag	UNP P05637
B	283	HIS	-	expression tag	UNP P05637
B	284	HIS	-	expression tag	UNP P05637
B	285	HIS	-	expression tag	UNP P05637
B	286	HIS	-	expression tag	UNP P05637

- Molecule 2 is BIS(ADENOSINE)-5'-TETRAPHOSPHATE (CCD ID: B4P) (formula: C<sub>20</sub>H<sub>28</sub>N<sub>10</sub>O<sub>19</sub>P<sub>4</sub>) (labeled as "Ligand of Interest" by depositor).



Mol	Chain	Residues	Atoms					ZeroOcc	AltConf
2	A	1	Total	C	N	O	P	0	0
			35	10	5	16	4		
2	B	1	Total	C	N	O	P	0	0
			35	10	5	16	4		

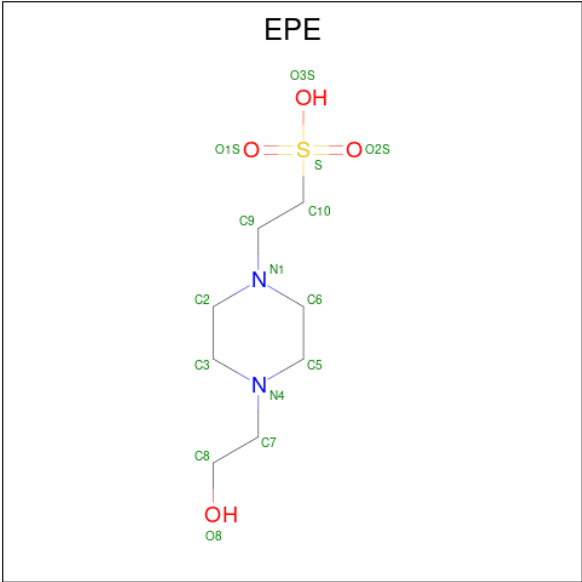
- Molecule 3 is MANGANESE (II) ION (CCD ID: MN) (formula: Mn).

Mol	Chain	Residues	Atoms		ZeroOcc	AltConf
3	A	2	Total	Mn	0	1
			2	2		
3	B	2	Total	Mn	0	1
			2	2		

- Molecule 4 is MAGNESIUM ION (CCD ID: MG) (formula: Mg).

Mol	Chain	Residues	Atoms		ZeroOcc	AltConf
4	A	1	Total	Mg	0	1
			1	1		
4	B	1	Total	Mg	0	1
			1	1		

- Molecule 5 is 4-(2-HYDROXYETHYL)-1-PIPERAZINE ETHANESULFONIC ACID (CCD ID: EPE) (formula: C<sub>8</sub>H<sub>18</sub>N<sub>2</sub>O<sub>4</sub>S).



Mol	Chain	Residues	Atoms						ZeroOcc	AltConf
5	B	1	Total	C	H	N	O	S	0	0
			32	8	17	2	4	1		

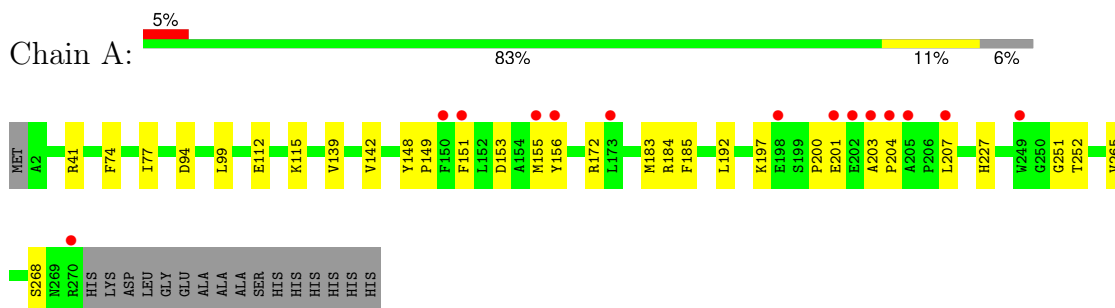
- Molecule 6 is water.

Mol	Chain	Residues	Atoms		ZeroOcc	AltConf
6	A	204	Total	O	0	0
			204	204		
6	B	202	Total	O	0	0
			202	202		

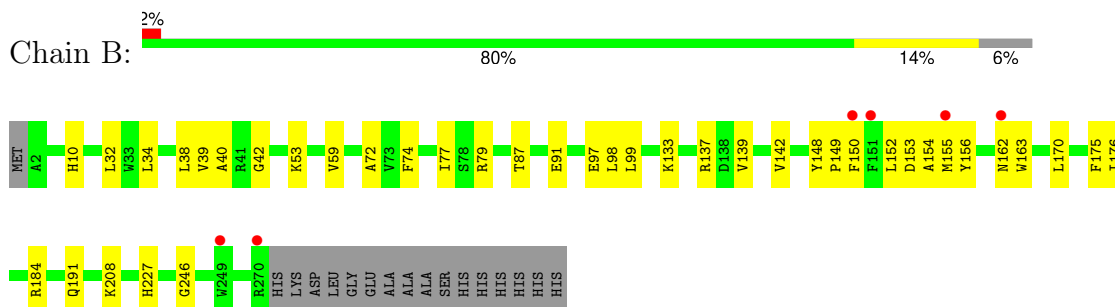
### 3 Residue-property plots [i](#)

These plots are drawn for all protein, RNA, DNA and oligosaccharide chains in the entry. The first graphic for a chain summarises the proportions of the various outlier classes displayed in the second graphic. The second graphic shows the sequence view annotated by issues in geometry and electron density. Residues are color-coded according to the number of geometric quality criteria for which they contain at least one outlier: green = 0, yellow = 1, orange = 2 and red = 3 or more. A red dot above a residue indicates a poor fit to the electron density ( $RSRZ > 2$ ). Stretches of 2 or more consecutive residues without any outlier are shown as a green connector. Residues present in the sample, but not in the model, are shown in grey.

- Molecule 1: Bis(5'-nucleosyl)-tetrphosphatase [symmetrical]



- Molecule 1: Bis(5'-nucleosyl)-tetrphosphatase [symmetrical]



## 4 Data and refinement statistics

Property	Value	Source
Space group	C 1 2 1	Depositor
Cell constants a, b, c, $\alpha$ , $\beta$ , $\gamma$	166.63Å 55.02Å 120.04Å 90.00° 129.80° 90.00°	Depositor
Resolution (Å)	29.51 – 1.96 29.51 – 1.96	Depositor EDS
% Data completeness (in resolution range)	99.3 (29.51-1.96) 99.3 (29.51-1.96)	Depositor EDS
$R_{merge}$	0.12	Depositor
$R_{sym}$	(Not available)	Depositor
$\langle I/\sigma(I) \rangle$ <sup>1</sup>	1.71 (at 1.96Å)	Xtriage
Refinement program	PHENIX 1.20.1_4487	Depositor
R, $R_{free}$	0.207 , 0.237 0.208 , 0.237	Depositor DCC
$R_{free}$ test set	1997 reflections (3.32%)	wwPDB-VP
Wilson B-factor (Å <sup>2</sup> )	25.2	Xtriage
Anisotropy	0.142	Xtriage
Bulk solvent $k_{sol}$ (e/Å <sup>3</sup> ), $B_{sol}$ (Å <sup>2</sup> )	0.36 , 38.6	EDS
L-test for twinning <sup>2</sup>	$\langle  L  \rangle = 0.50$ , $\langle L^2 \rangle = 0.33$	Xtriage
Estimated twinning fraction	No twinning to report.	Xtriage
$F_o, F_c$ correlation	0.94	EDS
Total number of atoms	4718	wwPDB-VP
Average B, all atoms (Å <sup>2</sup> )	24.0	wwPDB-VP

Xtriage's analysis on translational NCS is as follows: *The largest off-origin peak in the Patterson function is 6.88% of the height of the origin peak. No significant pseudotranslation is detected.*

<sup>1</sup>Intensities estimated from amplitudes.

<sup>2</sup>Theoretical values of  $\langle |L| \rangle$ ,  $\langle L^2 \rangle$  for acentric reflections are 0.5, 0.333 respectively for untwinned datasets, and 0.375, 0.2 for perfectly twinned datasets.

## 5 Model quality

### 5.1 Standard geometry

Bond lengths and bond angles in the following residue types are not validated in this section: B4P, MN, MG, EPE

The Z score for a bond length (or angle) is the number of standard deviations the observed value is removed from the expected value. A bond length (or angle) with  $|Z| > 5$  is considered an outlier worth inspection. RMSZ is the root-mean-square of all Z scores of the bond lengths (or angles).

Mol	Chain	Bond lengths		Bond angles	
		RMSZ	$\# Z  > 5$	RMSZ	$\# Z  > 5$
1	A	0.35	0/2162	0.54	0/2948
1	B	0.35	0/2162	0.56	0/2948
All	All	0.35	0/4324	0.55	0/5896

There are no bond length outliers.

There are no bond angle outliers.

There are no chirality outliers.

There are no planarity outliers.

### 5.2 Too-close contacts

In the following table, the Non-H and H(model) columns list the number of non-hydrogen atoms and hydrogen atoms in the chain respectively. The H(added) column lists the number of hydrogen atoms added and optimized by MolProbity. The Clashes column lists the number of clashes within the asymmetric unit, whereas Symm-Clashes lists symmetry-related clashes.

Mol	Chain	Non-H	H(model)	H(added)	Clashes	Symm-Clashes
1	A	2102	0	2033	26	0
1	B	2102	0	2029	27	0
2	A	35	0	12	4	0
2	B	35	0	12	3	0
3	A	2	0	0	0	0
3	B	2	0	0	0	0
4	A	1	0	0	0	0
4	B	1	0	0	0	0
5	B	15	17	17	0	0
6	A	204	0	0	5	0
6	B	202	0	0	4	0
All	All	4701	17	4103	55	0



The all-atom clashscore is defined as the number of clashes found per 1000 atoms (including hydrogen atoms). The all-atom clashscore for this structure is 7.

All (55) close contacts within the same asymmetric unit are listed below, sorted by their clash magnitude.

Atom-1	Atom-2	Interatomic distance (Å)	Clash overlap (Å)
1:B:162:ASN:OD1	1:B:191:GLN:HG2	1.82	0.79
1:A:142:VAL:HG21	1:A:151:PHE:HB2	1.65	0.77
1:B:133:LYS:O	1:B:137:ARG:HG2	1.84	0.77
1:A:227:HIS:HA	6:A:408:HOH:O	1.83	0.75
1:A:74:PHE:CG	1:A:99:LEU:HD12	2.25	0.71
1:B:227:HIS:HA	6:B:402:HOH:O	1.89	0.71
2:B:302:B4P:H52B	2:B:302:B4P:O1B	1.92	0.69
1:A:204:PRO:HG3	1:B:79:ARG:HD3	1.75	0.68
1:A:201:GLU:HG2	6:A:513:HOH:O	1.96	0.66
1:B:74:PHE:CD1	1:B:99:LEU:HD12	2.31	0.66
1:B:34:LEU:HD13	1:B:38:LEU:HD21	1.78	0.65
1:A:41:ARG:NH1	2:A:301:B4P:O2G	2.26	0.65
1:A:74:PHE:CD1	1:A:99:LEU:HD12	2.33	0.63
1:A:142:VAL:CG2	1:A:151:PHE:HB2	2.27	0.63
1:B:162:ASN:OD1	1:B:191:GLN:CG	2.46	0.63
1:A:112:GLU:O	1:A:115:LYS:HD3	1.98	0.62
1:B:184:ARG:NH1	2:B:302:B4P:O1A	2.28	0.62
1:A:185:PHE:CZ	1:A:203:ALA:HB2	2.38	0.59
1:A:200:PRO:HD2	6:A:513:HOH:O	2.02	0.58
1:A:197:LYS:NZ	2:A:301:B4P:O1B	2.37	0.58
2:A:301:B4P:H52B	2:A:301:B4P:O2B	2.04	0.57
1:B:208:LYS:HD2	6:B:598:HOH:O	2.07	0.54
1:A:183:MET:HG3	1:A:192:LEU:HD22	1.90	0.53
1:B:87:THR:O	1:B:91:GLU:HG3	2.09	0.52
1:B:155:MET:HE2	1:B:156:TYR:CE1	2.45	0.52
2:A:301:B4P:O2B	2:A:301:B4P:C5F	2.59	0.51
1:B:77:ILE:HD12	1:B:153:ASP:HB2	1.93	0.50
1:A:172:ARG:NE	6:A:405:HOH:O	2.42	0.50
1:B:53:LYS:HE3	1:B:97:GLU:HG3	1.96	0.48
1:B:139:VAL:O	1:B:142:VAL:HG22	2.14	0.47
1:B:39:VAL:O	1:B:40:ALA:HB3	2.14	0.47
1:B:163:TRP:HB2	1:B:175:PHE:CZ	2.50	0.47
1:B:34:LEU:HD13	1:B:38:LEU:CD2	2.44	0.46
1:B:72:ALA:HA	1:B:152:LEU:HD13	1.97	0.46
1:A:204:PRO:CG	1:B:79:ARG:HD3	2.43	0.45
1:A:155:MET:HE2	1:A:156:TYR:CE1	2.52	0.45
1:A:139:VAL:HA	1:A:142:VAL:HG12	2.00	0.44

*Continued on next page...*

Continued from previous page...

Atom-1	Atom-2	Interatomic distance (Å)	Clash overlap (Å)
1:A:251:GLY:O	1:A:268:SER:HB2	2.17	0.44
1:B:10:HIS:O	1:B:42:GLY:HA3	2.18	0.44
1:A:252:THR:HB	1:A:265:VAL:HG13	2.00	0.44
2:B:302:B4P:O2D	6:B:401:HOH:O	2.20	0.43
1:B:139:VAL:HG21	1:B:176:ILE:CG2	2.49	0.43
1:B:150:PHE:CD1	1:B:150:PHE:N	2.85	0.43
1:A:77:ILE:HD12	1:A:153:ASP:HB2	2.01	0.43
1:A:94:ASP:OD1	1:A:94:ASP:N	2.52	0.42
1:A:204:PRO:HD2	1:A:207:LEU:HD12	2.01	0.42
1:A:139:VAL:O	1:A:142:VAL:HG12	2.19	0.42
1:A:184:ARG:HB2	6:A:459:HOH:O	2.18	0.42
1:B:148:TYR:N	1:B:149:PRO:CD	2.83	0.41
1:A:142:VAL:CG2	1:A:151:PHE:CB	2.98	0.41
1:B:154:ALA:HB1	1:B:170:LEU:HD22	2.03	0.41
1:A:148:TYR:CD1	1:A:149:PRO:HD3	2.56	0.41
1:B:32:LEU:O	1:B:59:VAL:HA	2.20	0.41
1:B:97:GLU:HG2	1:B:98:LEU:N	2.36	0.41
1:B:246:GLY:HA2	6:B:465:HOH:O	2.20	0.41

There are no symmetry-related clashes.

## 5.3 Torsion angles ⓘ

### 5.3.1 Protein backbone ⓘ

In the following table, the Percentiles column shows the percent Ramachandran outliers of the chain as a percentile score with respect to all X-ray entries followed by that with respect to entries of similar resolution.

The Analysed column shows the number of residues for which the backbone conformation was analysed, and the total number of residues.

Mol	Chain	Analysed	Favoured	Allowed	Outliers	Percentiles	
1	A	267/286 (93%)	262 (98%)	5 (2%)	0	100	100
1	B	267/286 (93%)	262 (98%)	5 (2%)	0	100	100
All	All	534/572 (93%)	524 (98%)	10 (2%)	0	100	100

There are no Ramachandran outliers to report.

### 5.3.2 Protein sidechains [i](#)

In the following table, the Percentiles column shows the percent sidechain outliers of the chain as a percentile score with respect to all X-ray entries followed by that with respect to entries of similar resolution.

The Analysed column shows the number of residues for which the sidechain conformation was analysed, and the total number of residues.

Mol	Chain	Analysed	Rotameric	Outliers	Percentiles	
1	A	220/239 (92%)	220 (100%)	0	100	100
1	B	219/239 (92%)	219 (100%)	0	100	100
All	All	439/478 (92%)	439 (100%)	0	100	100

There are no protein residues with a non-rotameric sidechain to report.

Sometimes sidechains can be flipped to improve hydrogen bonding and reduce clashes. All (4) such sidechains are listed below:

Mol	Chain	Res	Type
1	A	130	GLN
1	A	162	ASN
1	B	69	HIS
1	B	262	GLN

### 5.3.3 RNA [i](#)

There are no RNA molecules in this entry.

## 5.4 Non-standard residues in protein, DNA, RNA chains [i](#)

There are no non-standard protein/DNA/RNA residues in this entry.

### 5.5 Carbohydrates [i](#)

There are no oligosaccharides in this entry.

### 5.6 Ligand geometry [i](#)

Of 9 ligands modelled in this entry, 6 are monoatomic - leaving 3 for Mogul analysis.

In the following table, the Counts columns list the number of bonds (or angles) for which Mogul statistics could be retrieved, the number of bonds (or angles) that are observed in the model and

the number of bonds (or angles) that are defined in the Chemical Component Dictionary. The Link column lists molecule types, if any, to which the group is linked. The Z score for a bond length (or angle) is the number of standard deviations the observed value is removed from the expected value. A bond length (or angle) with  $|Z| > 2$  is considered an outlier worth inspection. RMSZ is the root-mean-square of all Z scores of the bond lengths (or angles).

Mol	Type	Chain	Res	Link	Bond lengths			Bond angles		
					Counts	RMSZ	# Z  > 2	Counts	RMSZ	# Z  > 2
2	B4P	A	301	4,3	32,37,58	0.81	1 (3%)	39,59,91	0.87	2 (5%)
2	B4P	B	302	4,3	32,37,58	0.82	0	39,59,91	0.83	1 (2%)
5	EPE	B	301	-	15,15,15	0.61	0	19,20,20	1.36	2 (10%)

In the following table, the Chirals column lists the number of chiral outliers, the number of chiral centers analysed, the number of these observed in the model and the number defined in the Chemical Component Dictionary. Similar counts are reported in the Torsion and Rings columns. '-' means no outliers of that kind were identified.

Mol	Type	Chain	Res	Link	Chirals	Torsions	Rings
2	B4P	A	301	4,3	-	2/24/44/70	0/3/3/6
2	B4P	B	302	4,3	-	4/24/44/70	0/3/3/6
5	EPE	B	301	-	-	1/9/19/19	0/1/1/1

All (1) bond length outliers are listed below:

Mol	Chain	Res	Type	Atoms	Z	Observed(Å)	Ideal(Å)
2	A	301	B4P	O4F-C1F	2.03	1.43	1.40

All (5) bond angle outliers are listed below:

Mol	Chain	Res	Type	Atoms	Z	Observed(°)	Ideal(°)
5	B	301	EPE	C5-N4-C3	3.34	116.04	108.84
2	B	302	B4P	O5E-PA-O3A	2.67	113.58	104.64
2	A	301	B4P	O5E-PA-O3A	2.26	112.22	104.64
5	B	301	EPE	C7-N4-C3	2.16	116.99	111.24
2	A	301	B4P	C2F-C3F-C4F	2.03	106.53	102.61

There are no chirality outliers.

All (7) torsion outliers are listed below:

Mol	Chain	Res	Type	Atoms
2	A	301	B4P	PG-O3G-PD-O5F
5	B	301	EPE	C8-C7-N4-C3

*Continued on next page...*

*Continued from previous page...*

Mol	Chain	Res	Type	Atoms
2	A	301	B4P	PB-O3A-PA-O1A
2	B	302	B4P	PG-O3G-PD-O5F
2	B	302	B4P	PG-O3B-PB-O3A
2	B	302	B4P	PA-O3A-PB-O2B
2	B	302	B4P	PG-O3B-PB-O1B

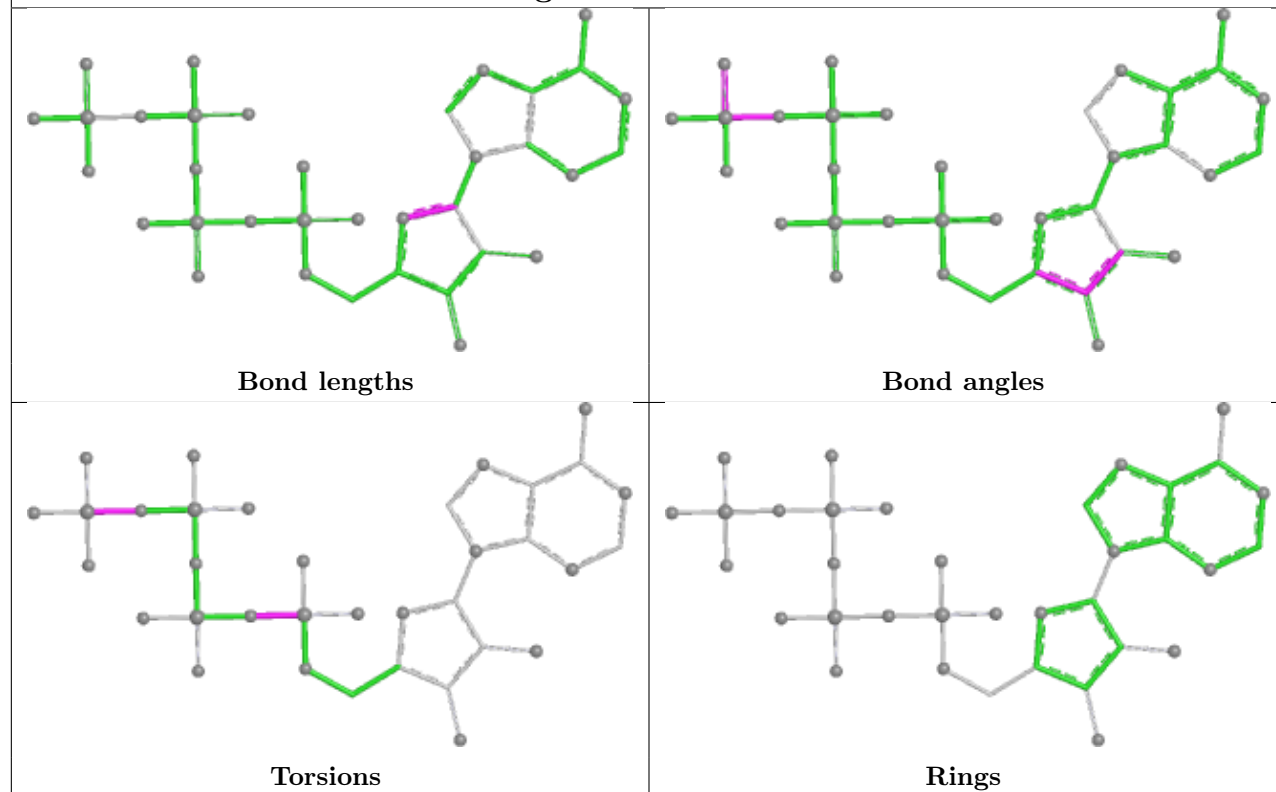
There are no ring outliers.

2 monomers are involved in 7 short contacts:

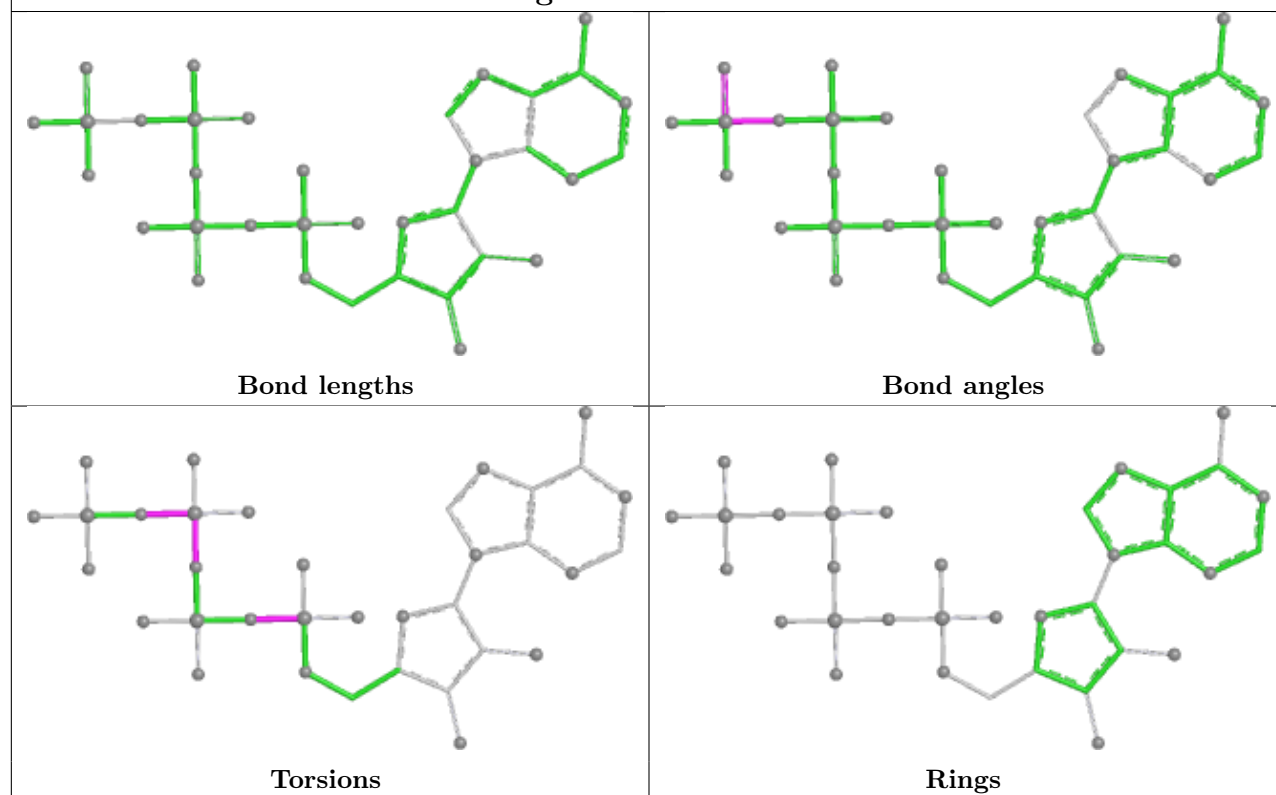
Mol	Chain	Res	Type	Clashes	Symm-Clashes
2	A	301	B4P	4	0
2	B	302	B4P	3	0

The following is a two-dimensional graphical depiction of Mogul quality analysis of bond lengths, bond angles, torsion angles, and ring geometry for all instances of the Ligand of Interest. In addition, ligands with molecular weight > 250 and outliers as shown on the validation Tables will also be included. For torsion angles, if less than 5% of the Mogul distribution of torsion angles is within 10 degrees of the torsion angle in question, then that torsion angle is considered an outlier. Any bond that is central to one or more torsion angles identified as an outlier by Mogul will be highlighted in the graph. For rings, the root-mean-square deviation (RMSD) between the ring in question and similar rings identified by Mogul is calculated over all ring torsion angles. If the average RMSD is greater than 60 degrees and the minimal RMSD between the ring in question and any Mogul-identified rings is also greater than 60 degrees, then that ring is considered an outlier. The outliers are highlighted in purple. The color gray indicates Mogul did not find sufficient equivalents in the CSD to analyse the geometry.

## Ligand B4P A 301



## Ligand B4P B 302



## 5.7 Other polymers [i](#)

There are no such residues in this entry.

## 5.8 Polymer linkage issues [i](#)

There are no chain breaks in this entry.

## 6 Fit of model and data

### 6.1 Protein, DNA and RNA chains

In the following table, the column labelled ‘#RSRZ > 2’ contains the number (and percentage) of RSRZ outliers, followed by percent RSRZ outliers for the chain as percentile scores relative to all X-ray entries and entries of similar resolution. The OWAB column contains the minimum, median, 95<sup>th</sup> percentile and maximum values of the occupancy-weighted average B-factor per residue. The column labelled ‘Q < 0.9’ lists the number of (and percentage) of residues with an average occupancy less than 0.9.

Mol	Chain	Analysed	<RSRZ>	#RSRZ>2	OWAB(Å <sup>2</sup> )	Q<0.9
1	A	269/286 (94%)	0.39	14 (5%) 34 40	14, 23, 38, 58	0
1	B	269/286 (94%)	0.29	6 (2%) 62 68	14, 21, 35, 49	0
All	All	538/572 (94%)	0.34	20 (3%) 45 52	14, 22, 37, 58	0

All (20) RSRZ outliers are listed below:

Mol	Chain	Res	Type	RSRZ
1	A	203	ALA	6.1
1	B	150	PHE	4.3
1	B	249	TRP	4.0
1	A	173	LEU	3.4
1	B	151	PHE	3.2
1	A	155	MET	3.1
1	A	150	PHE	3.1
1	B	155	MET	2.9
1	A	198	GLU	2.9
1	A	249	TRP	2.9
1	A	205	ALA	2.9
1	A	151	PHE	2.7
1	A	202	GLU	2.6
1	A	156	TYR	2.5
1	A	270	ARG	2.4
1	B	270	ARG	2.4
1	A	204	PRO	2.2
1	A	201	GLU	2.2
1	A	207	LEU	2.0
1	B	162	ASN	2.0



## 6.2 Non-standard residues in protein, DNA, RNA chains [i](#)

There are no non-standard protein/DNA/RNA residues in this entry.

## 6.3 Carbohydrates [i](#)

There are no oligosaccharides in this entry.

## 6.4 Ligands [i](#)

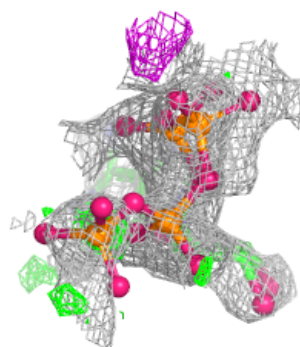
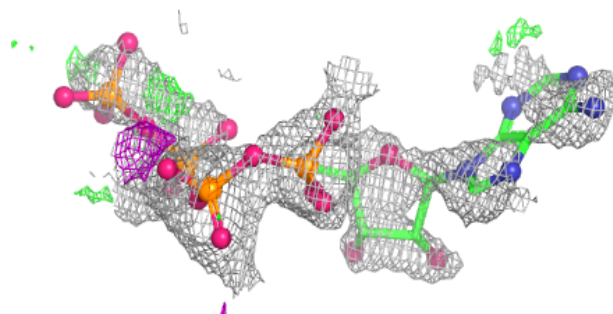
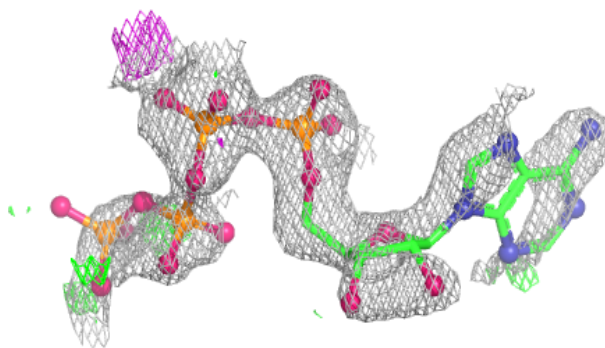
In the following table, the Atoms column lists the number of modelled atoms in the group and the number defined in the chemical component dictionary. The B-factors column lists the minimum, median, 95<sup>th</sup> percentile and maximum values of B factors of atoms in the group. The column labelled 'Q< 0.9' lists the number of atoms with occupancy less than 0.9.

Mol	Type	Chain	Res	Atoms	RSCC	RSR	B-factors( $\text{\AA}^2$ )	Q<0.9
2	B4P	A	301	35/53	0.88	0.17	26,37,43,47	29
2	B4P	B	302	35/53	0.88	0.16	24,37,45,50	27
5	EPE	B	301	15/15	0.89	0.11	28,37,46,46	1
4	MG	B	304[B]	1/1	0.98	0.03	26,26,26,26	1
3	MN	A	302[A]	1/1	0.98	0.04	25,25,25,25	1
3	MN	B	303[A]	1/1	0.99	0.04	26,26,26,26	1
4	MG	A	303[B]	1/1	0.99	0.04	25,25,25,25	1
3	MN	B	305	1/1	1.00	0.08	26,26,26,26	0
3	MN	A	304	1/1	1.00	0.10	27,27,27,27	0

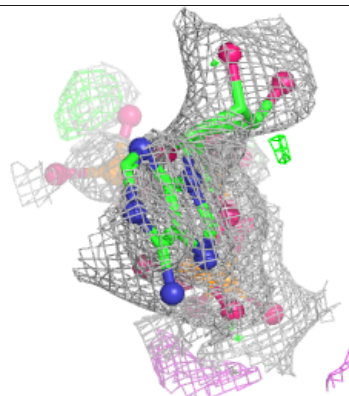
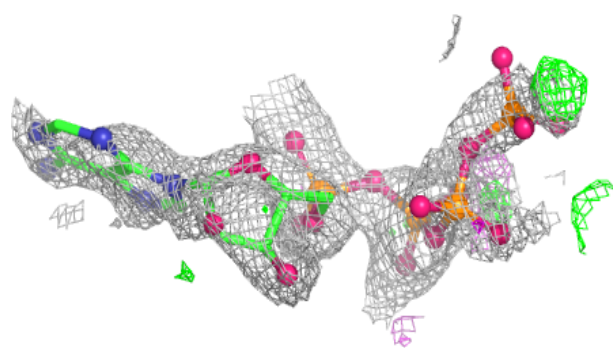
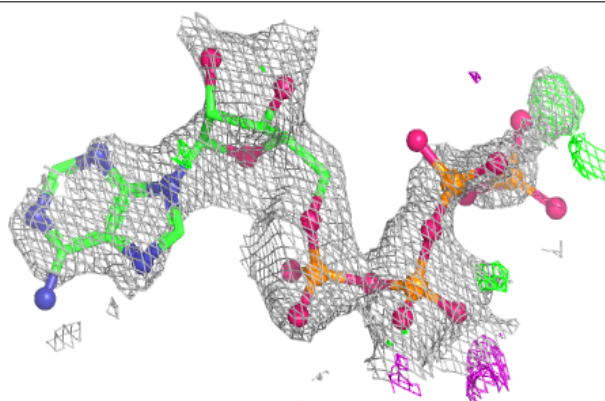
The following is a graphical depiction of the model fit to experimental electron density of all instances of the Ligand of Interest. In addition, ligands with molecular weight > 250 and outliers as shown on the geometry validation Tables will also be included. Each fit is shown from different orientation to approximate a three-dimensional view.

**Electron density around B4P A 301:**

$2mF_o-DF_c$  (at 0.7 rmsd) in gray  
 $mF_o-DF_c$  (at 3 rmsd) in purple (negative)  
and green (positive)

**Electron density around B4P B 302:**

$2mF_o-DF_c$  (at 0.7 rmsd) in gray  
 $mF_o-DF_c$  (at 3 rmsd) in purple (negative)  
and green (positive)



## 6.5 Other polymers [i](#)

There are no such residues in this entry.