



Full wwPDB X-ray Structure Validation Report ⓘ

Nov 13, 2025 – 10:15 AM EST

PDB ID : 9OHX / pdb_00009ohx
Title : CD1c presenting endogenous lipids
Authors : Liao, G.; Cao, T.P.; Rossjohn, J.; Shahine, A.
Deposited on : 2025-05-05
Resolution : 1.68 Å(reported)

This is a Full wwPDB X-ray Structure Validation Report for a publicly released PDB entry.

We welcome your comments at validation@mail.wwpdb.org

A user guide is available at

<https://www.wwpdb.org/validation/2017/XrayValidationReportHelp>

with specific help available everywhere you see the ⓘ symbol.

The types of validation reports are described at

<http://www.wwpdb.org/validation/2017/FAQs#types>.

The following versions of software and data (see [references ⓘ](#)) were used in the production of this report:

MolProbity : 4-5-2 with Phenix2.0
Mogul : 2022.3.0, CSD as543be (2022)
Xtriage (Phenix) : 2.0
EDS : 3.0
buster-report : 1.1.7 (2018)
Percentile statistics : 20231227.v01 (using entries in the PDB archive December 27th 2023)
CCP4 : 9.0.010 (Gargrove)
Density-Fitness : 1.0.12
Ideal geometry (proteins) : Engh & Huber (2001)
Ideal geometry (DNA, RNA) : Parkinson et al. (1996)
Validation Pipeline (wwPDB-VP) : 2.46

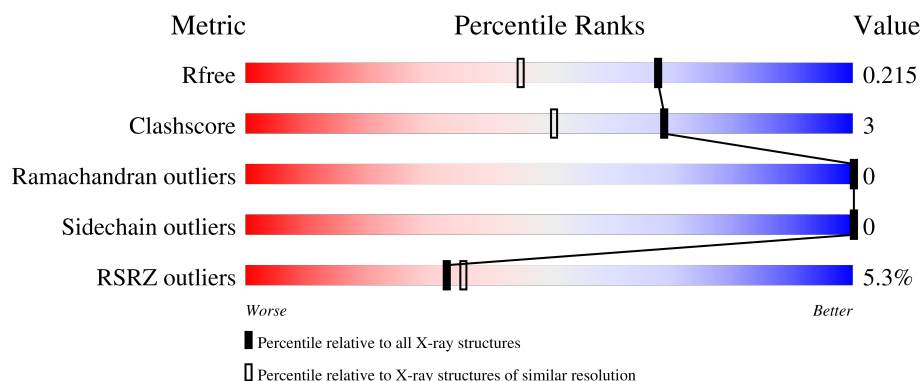
1 Overall quality at a glance

The following experimental techniques were used to determine the structure:

X-RAY DIFFRACTION

The reported resolution of this entry is 1.68 Å.

Percentile scores (ranging between 0-100) for global validation metrics of the entry are shown in the following graphic. The table shows the number of entries on which the scores are based.



Metric	Whole archive (#Entries)	Similar resolution (#Entries, resolution range(Å))
R_{free}	164625	8422 (1.70-1.66)
Clashscore	180529	1005 (1.68-1.68)
Ramachandran outliers	177936	9065 (1.70-1.66)
Sidechain outliers	177891	9064 (1.70-1.66)
RSRZ outliers	164620	8421 (1.70-1.66)

The table below summarises the geometric issues observed across the polymeric chains and their fit to the electron density. The red, orange, yellow and green segments of the lower bar indicate the fraction of residues that contain outliers for ≥ 3 , 2, 1 and 0 types of geometric quality criteria respectively. A grey segment represents the fraction of residues that are not modelled. The numeric value for each fraction is indicated below the corresponding segment, with a dot representing fractions $\leq 5\%$. The upper red bar (where present) indicates the fraction of residues that have poor fit to the electron density. The numeric value is given above the bar.

Mol	Chain	Length	Quality of chain
1	A	290	<div> <div>6%</div> <div> <div></div> <div>88%</div> <div>9%</div> <div></div> </div> </div>
2	B	107	<div> <div>3%</div> <div> <div></div> <div>84%</div> <div>7%</div> <div>9%</div> </div> </div>

2 Entry composition

There are 9 unique types of molecules in this entry. The entry contains 3409 atoms, of which 0 are hydrogens and 0 are deuteriums.

In the tables below, the ZeroOcc column contains the number of atoms modelled with zero occupancy, the AltConf column contains the number of residues with at least one atom in alternate conformation and the Trace column contains the number of residues modelled with at most 2 atoms.

- Molecule 1 is a protein called T-cell surface glycoprotein CD1c/T-cell surface glycoprotein CD1b chimeric protein.

Mol	Chain	Residues	Atoms					ZeroOcc	AltConf	Trace
1	A	280	Total	C	N	O	S	0	17	0
			2257	1466	382	399	10			

- Molecule 2 is a protein called Beta-2-microglobulin.

Mol	Chain	Residues	Atoms					ZeroOcc	AltConf	Trace
2	B	97	Total	C	N	O	S	0	2	0
			778	504	129	143	2			

There are 7 discrepancies between the modelled and reference sequences:

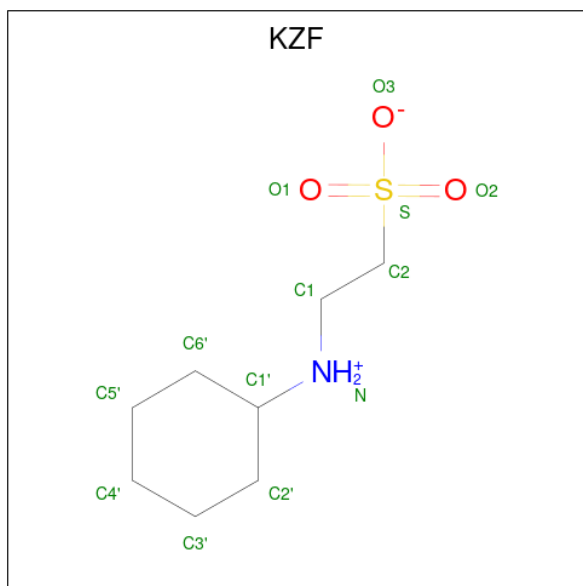
Chain	Residue	Modelled	Actual	Comment	Reference
B	-1	ASP	-	expression tag	UNP P61769
B	0	ALA	-	expression tag	UNP P61769
B	101	GLY	-	expression tag	UNP P61769
B	102	SER	-	expression tag	UNP P61769
B	103	LEU	-	expression tag	UNP P61769
B	104	VAL	-	expression tag	UNP P61769
B	105	PRO	-	expression tag	UNP P61769

- Molecule 3 is 2-acetamido-2-deoxy-beta-D-glucopyranose (CCD ID: NAG) (formula: C₈H₁₅NO₆).



Mol	Chain	Residues	Atoms				ZeroOcc	AltConf
3	A	1	Total	C	N	O	0	0
			14	8	1	5		

- Molecule 4 is 2-(cyclohexylazanumyl)ethanesulfonate (CCD ID: KZF) (formula: $C_8H_{17}NO_3S$).



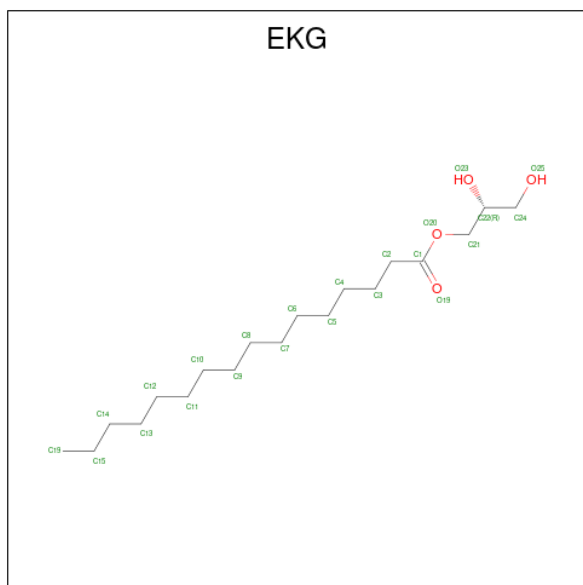
Mol	Chain	Residues	Atoms					ZeroOcc	AltConf
4	A	1	Total	C	N	O	S	0	0
			13	8	1	3	1		
4	A	1	Total	C	N	O	S	0	0
			13	8	1	3	1		

Continued on next page...

Continued from previous page...

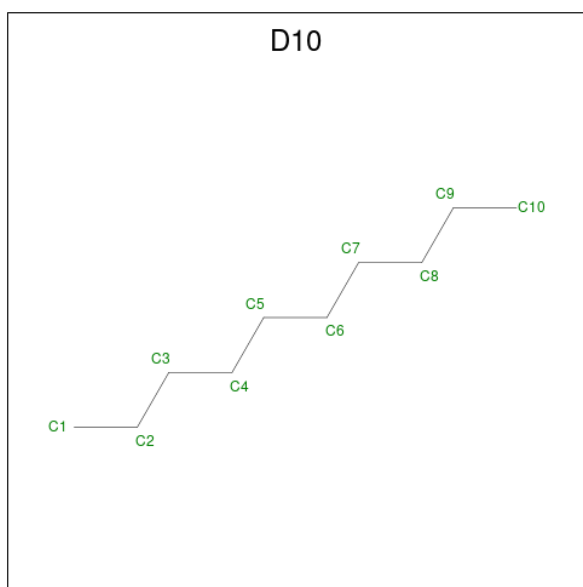
Mol	Chain	Residues	Atoms					ZeroOcc	AltConf
4	A	1	Total	C	N	O	S	0	0
			13	8	1	3	1		

- Molecule 5 is (2R)-2,3-dihydroxypropyl hexadecanoate (CCD ID: EKG) (formula: C₁₉H₃₈O₄) (labeled as "Ligand of Interest" by depositor).



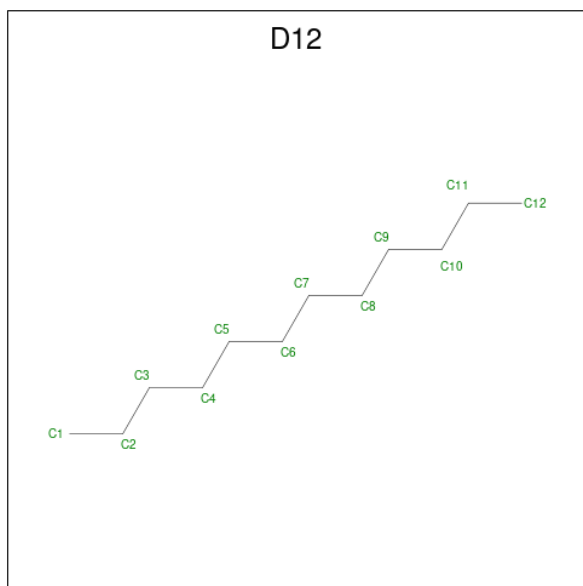
Mol	Chain	Residues	Atoms			ZeroOcc	AltConf
5	A	1	Total	C	O	0	0
			23	19	4		

- Molecule 6 is DECANE (CCD ID: D10) (formula: C₁₀H₂₂) (labeled as "Ligand of Interest" by depositor).



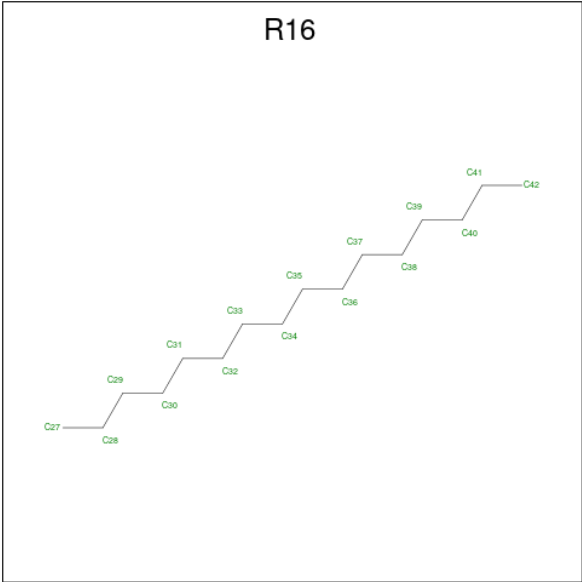
Mol	Chain	Residues	Atoms	ZeroOcc	AltConf
6	A	1	Total C 10 10	0	0

- Molecule 7 is DODECANE (CCD ID: D12) (formula: $C_{12}H_{26}$) (labeled as "Ligand of Interest" by depositor).



Mol	Chain	Residues	Atoms	ZeroOcc	AltConf
7	A	1	Total C 12 12	0	0

- Molecule 8 is HEXADECANE (CCD ID: R16) (formula: $C_{16}H_{34}$) (labeled as "Ligand of Interest" by depositor).



Mol	Chain	Residues	Atoms		ZeroOcc	AltConf
8	A	1	Total	C	0	0
			16	16		

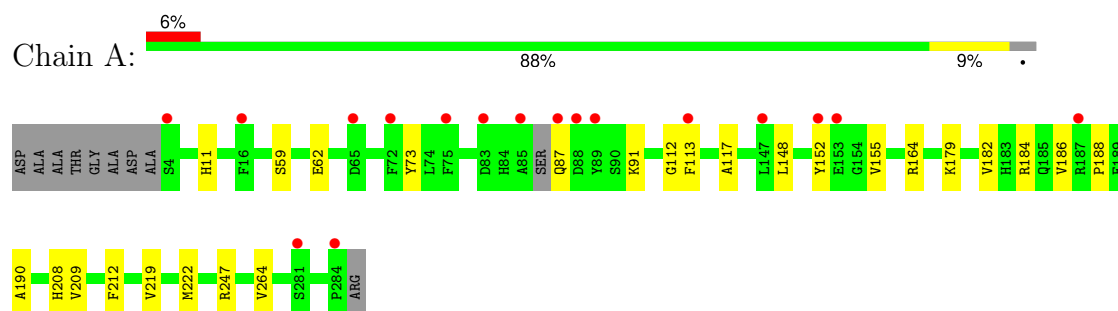
- Molecule 9 is water.

Mol	Chain	Residues	Atoms		ZeroOcc	AltConf
9	A	174	Total	O	0	0
			174	174		
9	B	86	Total	O	0	0
			86	86		

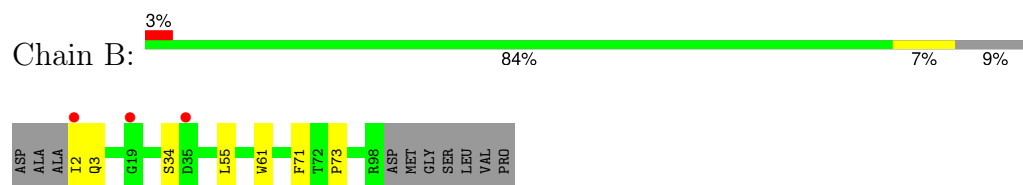
3 Residue-property plots [i](#)

These plots are drawn for all protein, RNA, DNA and oligosaccharide chains in the entry. The first graphic for a chain summarises the proportions of the various outlier classes displayed in the second graphic. The second graphic shows the sequence view annotated by issues in geometry and electron density. Residues are color-coded according to the number of geometric quality criteria for which they contain at least one outlier: green = 0, yellow = 1, orange = 2 and red = 3 or more. A red dot above a residue indicates a poor fit to the electron density ($RSRZ > 2$). Stretches of 2 or more consecutive residues without any outlier are shown as a green connector. Residues present in the sample, but not in the model, are shown in grey.

- Molecule 1: T-cell surface glycoprotein CD1c/T-cell surface glycoprotein CD1b chimeric protein



- Molecule 2: Beta-2-microglobulin



4 Data and refinement statistics

Property	Value	Source
Space group	P 21 21 21	Depositor
Cell constants a, b, c, α , β , γ	55.94Å 84.66Å 92.51Å 90.00° 90.00° 90.00°	Depositor
Resolution (Å)	47.87 – 1.68 47.87 – 1.68	Depositor EDS
% Data completeness (in resolution range)	100.0 (47.87-1.68) 100.0 (47.87-1.68)	Depositor EDS
R_{merge}	(Not available)	Depositor
R_{sym}	(Not available)	Depositor
$\langle I/\sigma(I) \rangle$ ¹	2.56 (at 1.68Å)	Xtriage
Refinement program	PHENIX (1.21.2_5419: ???)	Depositor
R, R_{free}	0.189 , 0.217 0.191 , 0.215	Depositor DCC
R_{free} test set	2589 reflections (5.09%)	wwPDB-VP
Wilson B-factor (Å ²)	25.1	Xtriage
Anisotropy	0.562	Xtriage
Bulk solvent k_{sol} (e/Å ³), B_{sol} (Å ²)	0.37 , 41.5	EDS
L-test for twinning ²	$\langle L \rangle = 0.49$, $\langle L^2 \rangle = 0.32$	Xtriage
Estimated twinning fraction	No twinning to report.	Xtriage
F_o, F_c correlation	0.96	EDS
Total number of atoms	3409	wwPDB-VP
Average B, all atoms (Å ²)	31.0	wwPDB-VP

Xtriage's analysis on translational NCS is as follows: *The largest off-origin peak in the Patterson function is 4.55% of the height of the origin peak. No significant pseudotranslation is detected.*

¹Intensities estimated from amplitudes.

²Theoretical values of $\langle |L| \rangle$, $\langle L^2 \rangle$ for acentric reflections are 0.5, 0.333 respectively for untwinned datasets, and 0.375, 0.2 for perfectly twinned datasets.

5 Model quality

5.1 Standard geometry

Bond lengths and bond angles in the following residue types are not validated in this section: KZF, D12, R16, EKG, NAG, D10

The Z score for a bond length (or angle) is the number of standard deviations the observed value is removed from the expected value. A bond length (or angle) with $|Z| > 5$ is considered an outlier worth inspection. RMSZ is the root-mean-square of all Z scores of the bond lengths (or angles).

Mol	Chain	Bond lengths		Bond angles	
		RMSZ	$\# Z > 5$	RMSZ	$\# Z > 5$
1	A	0.29	0/2377	0.52	0/3231
2	B	0.29	0/807	0.51	0/1102
All	All	0.29	0/3184	0.52	0/4333

There are no bond length outliers.

There are no bond angle outliers.

There are no chirality outliers.

There are no planarity outliers.

5.2 Too-close contacts

In the following table, the Non-H and H(model) columns list the number of non-hydrogen atoms and hydrogen atoms in the chain respectively. The H(added) column lists the number of hydrogen atoms added and optimized by MolProbity. The Clashes column lists the number of clashes within the asymmetric unit, whereas Symm-Clashes lists symmetry-related clashes.

Mol	Chain	Non-H	H(model)	H(added)	Clashes	Symm-Clashes
1	A	2257	0	2190	17	0
2	B	778	0	715	4	0
3	A	14	0	13	0	0
4	A	39	0	0	0	0
5	A	23	0	0	0	0
6	A	10	0	22	3	0
7	A	12	0	26	0	0
8	A	16	0	34	0	0
9	A	174	0	0	1	0
9	B	86	0	0	0	0
All	All	3409	0	3000	21	0

The all-atom clashscore is defined as the number of clashes found per 1000 atoms (including hydrogen atoms). The all-atom clashscore for this structure is 3.

All (21) close contacts within the same asymmetric unit are listed below, sorted by their clash magnitude.

Atom-1	Atom-2	Interatomic distance (Å)	Clash overlap (Å)
1:A:209:VAL:HG21	1:A:219[B]:VAL:HG11	1.73	0.69
2:B:34:SER:HB2	2:B:55:LEU:HD21	1.84	0.60
1:A:188:PRO:HB3	1:A:212:PHE:HB3	1.89	0.55
1:A:219[B]:VAL:HG12	1:A:264:VAL:HG22	1.94	0.49
1:A:59:SER:OG	1:A:62[A]:GLU:HG3	2.12	0.49
1:A:184[B]:ARG:HH11	1:A:186:VAL:HG21	1.79	0.47
2:B:2:ILE:HG13	2:B:3:GLN:H	1.79	0.47
1:A:87:GLN:N	1:A:91:LYS:HZ1	2.14	0.46
6:A:306:D10:H12	6:A:306:D10:H41	1.78	0.44
1:A:112:GLY:H	1:A:164:ARG:NH2	2.17	0.42
1:A:155:VAL:HG22	6:A:306:D10:H102	2.01	0.42
1:A:117:ALA:HB2	2:B:61:TRP:CE2	2.54	0.41
1:A:179:LYS:HA	1:A:182[B]:VAL:HG22	2.02	0.41
1:A:11:HIS:NE2	1:A:113[B]:PHE:HZ	2.19	0.41
1:A:247[A]:ARG:HD2	9:A:455:HOH:O	2.19	0.41
1:A:11:HIS:CD2	1:A:113[B]:PHE:CZ	3.08	0.41
2:B:71:PHE:CE2	2:B:73:PRO:HG3	2.55	0.41
1:A:148:LEU:HA	1:A:152:TYR:HD2	1.86	0.40
1:A:73:TYR:HB2	6:A:306:D10:H62	2.04	0.40
1:A:190:ALA:HA	1:A:208:HIS:O	2.22	0.40
1:A:222:MET:HE3	1:A:222:MET:HB3	1.97	0.40

There are no symmetry-related clashes.

5.3 Torsion angles [i](#)

5.3.1 Protein backbone [i](#)

In the following table, the Percentiles column shows the percent Ramachandran outliers of the chain as a percentile score with respect to all X-ray entries followed by that with respect to entries of similar resolution.

The Analysed column shows the number of residues for which the backbone conformation was analysed, and the total number of residues.

Mol	Chain	Analysed	Favoured	Allowed	Outliers	Percentiles	
1	A	294/290 (101%)	290 (99%)	4 (1%)	0	100	100

Continued on next page...

Continued from previous page...

Mol	Chain	Analysed	Favoured	Allowed	Outliers	Percentiles	
2	B	97/107 (91%)	97 (100%)	0	0	100	100
All	All	391/397 (98%)	387 (99%)	4 (1%)	0	100	100

There are no Ramachandran outliers to report.

5.3.2 Protein sidechains ⓘ

In the following table, the Percentiles column shows the percent sidechain outliers of the chain as a percentile score with respect to all X-ray entries followed by that with respect to entries of similar resolution.

The Analysed column shows the number of residues for which the sidechain conformation was analysed, and the total number of residues.

Mol	Chain	Analysed	Rotameric	Outliers	Percentiles	
1	A	241/244 (99%)	241 (100%)	0	100	100
2	B	81/99 (82%)	81 (100%)	0	100	100
All	All	322/343 (94%)	322 (100%)	0	100	100

There are no protein residues with a non-rotameric sidechain to report.

Sometimes sidechains can be flipped to improve hydrogen bonding and reduce clashes. All (8) such sidechains are listed below:

Mol	Chain	Res	Type
1	A	14	GLN
1	A	84	HIS
1	A	183	HIS
1	A	185	GLN
1	A	204	GLN
1	A	228	GLN
1	A	229	GLN
2	B	18	ASN

5.3.3 RNA ⓘ

There are no RNA molecules in this entry.

5.4 Non-standard residues in protein, DNA, RNA chains ⓘ

There are no non-standard protein/DNA/RNA residues in this entry.

5.5 Carbohydrates ⓘ

There are no oligosaccharides in this entry.

5.6 Ligand geometry ⓘ

8 ligands are modelled in this entry.

In the following table, the Counts columns list the number of bonds (or angles) for which Mogul statistics could be retrieved, the number of bonds (or angles) that are observed in the model and the number of bonds (or angles) that are defined in the Chemical Component Dictionary. The Link column lists molecule types, if any, to which the group is linked. The Z score for a bond length (or angle) is the number of standard deviations the observed value is removed from the expected value. A bond length (or angle) with $|Z| > 2$ is considered an outlier worth inspection. RMSZ is the root-mean-square of all Z scores of the bond lengths (or angles).

Mol	Type	Chain	Res	Link	Bond lengths			Bond angles		
					Counts	RMSZ	# $ Z > 2$	Counts	RMSZ	# $ Z > 2$
6	D10	A	306	-	9,9,9	0.32	0	8,8,8	0.75	0
5	EKG	A	305	-	22,22,22	0.83	1 (4%)	23,23,23	0.71	1 (4%)
3	NAG	A	301	1	14,14,15	0.85	0	17,19,21	1.03	1 (5%)
4	KZF	A	303	-	13,13,13	1.26	3 (23%)	16,17,17	1.75	4 (25%)
4	KZF	A	302	-	13,13,13	1.39	3 (23%)	16,17,17	2.18	7 (43%)
8	R16	A	308	-	15,15,15	0.10	0	14,14,14	0.09	0
4	KZF	A	304	-	13,13,13	1.37	3 (23%)	16,17,17	1.77	4 (25%)
7	D12	A	307	-	11,11,11	0.33	0	10,10,10	0.74	0

In the following table, the Chirals column lists the number of chiral outliers, the number of chiral centers analysed, the number of these observed in the model and the number defined in the Chemical Component Dictionary. Similar counts are reported in the Torsion and Rings columns. '-' means no outliers of that kind were identified.

Mol	Type	Chain	Res	Link	Chirals	Torsions	Rings
6	D10	A	306	-	-	3/7/7/7	-
5	EKG	A	305	-	-	10/22/22/22	-
3	NAG	A	301	1	-	2/6/23/26	0/1/1/1
4	KZF	A	303	-	-	5/7/15/15	0/1/1/1
4	KZF	A	302	-	-	3/7/15/15	0/1/1/1

Continued on next page...

Continued from previous page...

Mol	Type	Chain	Res	Link	Chirals	Torsions	Rings
8	R16	A	308	-	-	1/13/13/13	-
4	KZF	A	304	-	-	1/7/15/15	0/1/1/1
7	D12	A	307	-	-	3/9/9/9	-

All (10) bond length outliers are listed below:

Mol	Chain	Res	Type	Atoms	Z	Observed(Å)	Ideal(Å)
4	A	304	KZF	C2-S	3.17	1.82	1.77
4	A	302	KZF	C2-S	3.01	1.81	1.77
5	A	305	EKG	O20-C1	2.67	1.41	1.33
4	A	303	KZF	C2-S	2.61	1.81	1.77
4	A	302	KZF	O2-S	2.37	1.51	1.45
4	A	304	KZF	O2-S	2.34	1.51	1.45
4	A	302	KZF	O1-S	2.32	1.51	1.45
4	A	304	KZF	O1-S	2.28	1.51	1.45
4	A	303	KZF	O2-S	2.26	1.51	1.45
4	A	303	KZF	O1-S	2.09	1.51	1.45

All (17) bond angle outliers are listed below:

Mol	Chain	Res	Type	Atoms	Z	Observed(°)	Ideal(°)
4	A	304	KZF	O3-S-O1	-4.26	100.74	111.40
4	A	302	KZF	C6'-C1'-C2'	4.11	117.90	110.80
4	A	302	KZF	O2-S-O1	-3.80	101.47	113.82
4	A	303	KZF	C6'-C1'-C2'	3.43	116.73	110.80
4	A	304	KZF	O1-S-C2	3.25	111.64	106.73
4	A	303	KZF	O3-S-C2	3.13	112.14	106.00
4	A	304	KZF	O3-S-C2	3.12	112.10	106.00
4	A	303	KZF	O2-S-O1	-3.07	103.83	113.82
4	A	302	KZF	C1-N-C1'	-3.01	108.39	114.18
4	A	302	KZF	C3'-C2'-C1'	3.00	116.48	111.09
4	A	302	KZF	O1-S-C2	2.89	111.10	106.73
4	A	303	KZF	C3'-C2'-C1'	2.78	116.07	111.09
4	A	302	KZF	O2-S-C2	2.77	110.92	106.73
3	A	301	NAG	C1-O5-C5	2.68	115.78	112.19
4	A	304	KZF	O2-S-C2	2.22	110.08	106.73
4	A	302	KZF	C5'-C6'-C1'	2.17	114.99	111.09
5	A	305	EKG	O20-C1-C2	2.17	118.45	111.83

There are no chirality outliers.

All (28) torsion outliers are listed below:

Mol	Chain	Res	Type	Atoms
4	A	303	KZF	C2-C1-N-C1'
4	A	303	KZF	N-C1-C2-S
5	A	305	EKG	C21-C22-C24-O25
5	A	305	EKG	C2-C1-O20-C21
5	A	305	EKG	O19-C1-O20-C21
3	A	301	NAG	C8-C7-N2-C2
3	A	301	NAG	O7-C7-N2-C2
5	A	305	EKG	C11-C10-C9-C8
8	A	308	R16	C32-C33-C34-C35
6	A	306	D10	C5-C6-C7-C8
5	A	305	EKG	C1-C2-C3-C4
5	A	305	EKG	C6-C7-C8-C9
6	A	306	D10	C6-C7-C8-C9
5	A	305	EKG	O23-C22-C24-O25
5	A	305	EKG	C2-C3-C4-C5
4	A	303	KZF	C2'-C1'-N-C1
5	A	305	EKG	C5-C6-C7-C8
4	A	304	KZF	C2-C1-N-C1'
7	A	307	D12	C4-C5-C6-C7
7	A	307	D12	C5-C6-C7-C8
7	A	307	D12	C6-C7-C8-C9
4	A	302	KZF	C1-C2-S-O2
5	A	305	EKG	C3-C4-C5-C6
6	A	306	D10	C7-C8-C9-C10
4	A	302	KZF	C6'-C1'-N-C1
4	A	303	KZF	C6'-C1'-N-C1
4	A	303	KZF	C1-C2-S-O2
4	A	302	KZF	C2-C1-N-C1'

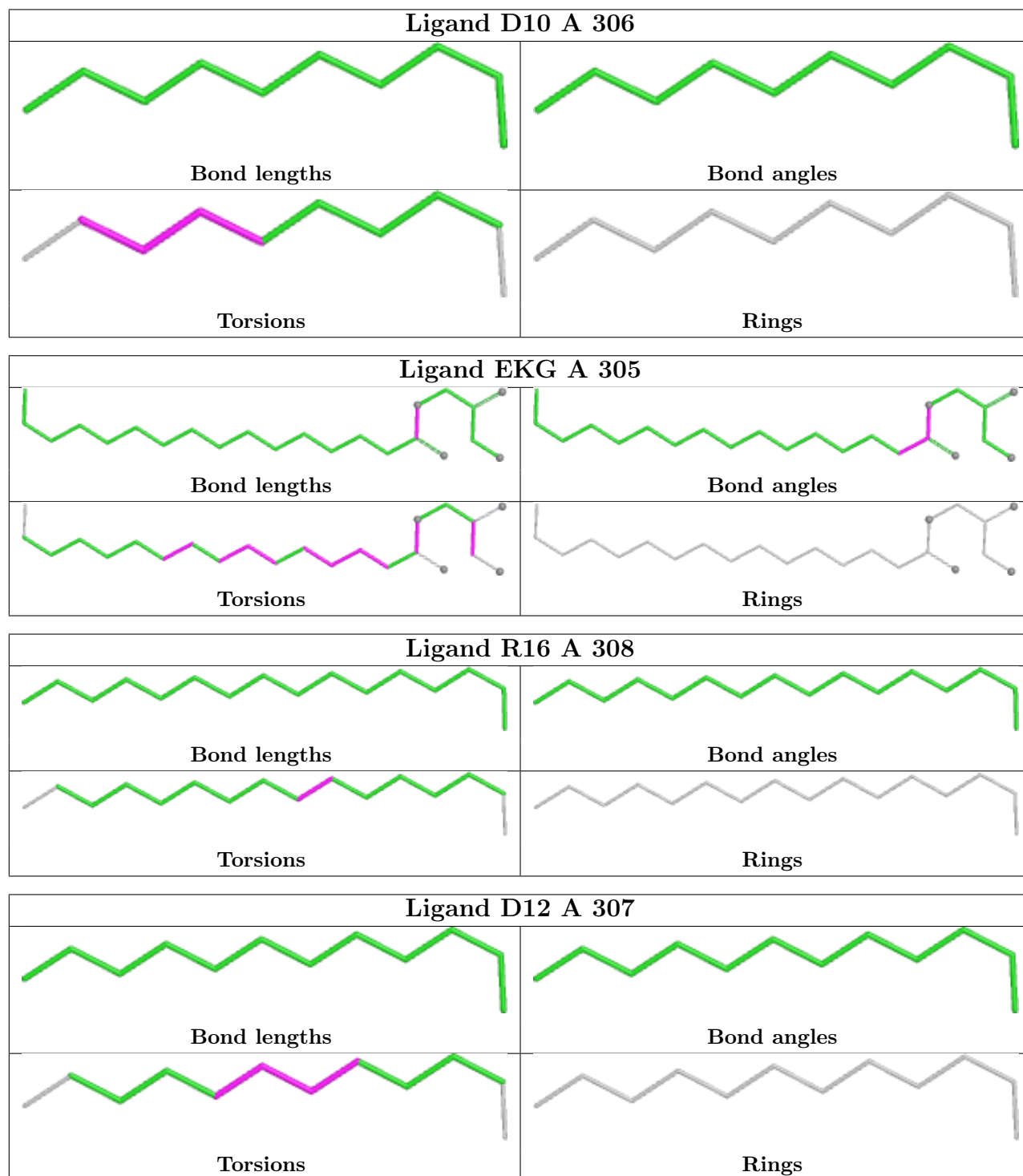
There are no ring outliers.

1 monomer is involved in 3 short contacts:

Mol	Chain	Res	Type	Clashes	Symm-Clashes
6	A	306	D10	3	0

The following is a two-dimensional graphical depiction of Mogul quality analysis of bond lengths, bond angles, torsion angles, and ring geometry for all instances of the Ligand of Interest. In addition, ligands with molecular weight > 250 and outliers as shown on the validation Tables will also be included. For torsion angles, if less than 5% of the Mogul distribution of torsion angles is within 10 degrees of the torsion angle in question, then that torsion angle is considered an outlier. Any bond that is central to one or more torsion angles identified as an outlier by Mogul will be highlighted in the graph. For rings, the root-mean-square deviation (RMSD) between the ring in question and similar rings identified by Mogul is calculated over all ring torsion angles. If the

average RMSD is greater than 60 degrees and the minimal RMSD between the ring in question and any Mogul-identified rings is also greater than 60 degrees, then that ring is considered an outlier. The outliers are highlighted in purple. The color gray indicates Mogul did not find sufficient equivalents in the CSD to analyse the geometry.



5.7 Other polymers [i](#)

There are no such residues in this entry.

5.8 Polymer linkage issues [i](#)

There are no chain breaks in this entry.

6 Fit of model and data

6.1 Protein, DNA and RNA chains

In the following table, the column labelled ‘#RSRZ> 2’ contains the number (and percentage) of RSRZ outliers, followed by percent RSRZ outliers for the chain as percentile scores relative to all X-ray entries and entries of similar resolution. The OWAB column contains the minimum, median, 95th percentile and maximum values of the occupancy-weighted average B-factor per residue. The column labelled ‘Q< 0.9’ lists the number of (and percentage) of residues with an average occupancy less than 0.9.

Mol	Chain	Analysed	<RSRZ>	#RSRZ>2		OWAB(Å ²)	Q<0.9
1	A	280/290 (96%)	0.44	17 (6%)	28 30	12, 28, 50, 72	17 (6%)
2	B	97/107 (90%)	0.38	3 (3%)	51 55	19, 28, 47, 56	2 (2%)
All	All	377/397 (94%)	0.43	20 (5%)	33 36	12, 28, 48, 72	19 (5%)

All (20) RSRZ outliers are listed below:

Mol	Chain	Res	Type	RSRZ
1	A	85	ALA	4.4
2	B	2	ILE	4.3
1	A	152	TYR	3.9
1	A	89	TYR	3.1
1	A	87	GLN	3.1
1	A	284	PRO	3.0
1	A	4	SER	3.0
1	A	153	GLU	2.7
1	A	88	ASP	2.7
1	A	187	ARG	2.6
1	A	281	SER	2.6
1	A	147	LEU	2.4
1	A	65	ASP	2.3
2	B	19	GLY	2.3
1	A	16	PHE	2.2
2	B	35	ASP	2.2
1	A	72	PHE	2.2
1	A	113[A]	PHE	2.2
1	A	75	PHE	2.0
1	A	83	ASP	2.0

6.2 Non-standard residues in protein, DNA, RNA chains [i](#)

There are no non-standard protein/DNA/RNA residues in this entry.

6.3 Carbohydrates [i](#)

There are no oligosaccharides in this entry.

6.4 Ligands [i](#)

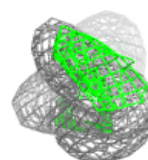
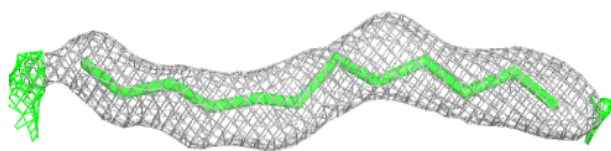
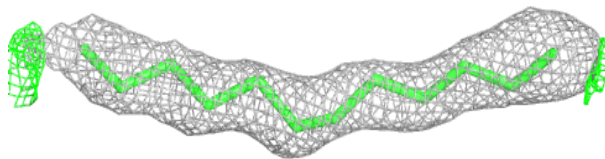
In the following table, the Atoms column lists the number of modelled atoms in the group and the number defined in the chemical component dictionary. The B-factors column lists the minimum, median, 95th percentile and maximum values of B factors of atoms in the group. The column labelled 'Q< 0.9' lists the number of atoms with occupancy less than 0.9.

Mol	Type	Chain	Res	Atoms	RSCC	RSR	B-factors(\AA^2)	Q<0.9
4	KZF	A	302	13/13	0.77	0.16	29,47,81,85	0
7	D12	A	307	12/12	0.83	0.17	43,48,52,52	0
8	R16	A	308	16/16	0.83	0.18	34,43,51,61	0
4	KZF	A	303	13/13	0.84	0.15	35,43,55,63	0
6	D10	A	306	10/10	0.84	0.17	42,46,52,56	0
5	EKG	A	305	23/23	0.87	0.14	27,36,51,59	0
3	NAG	A	301	14/15	0.89	0.10	28,40,47,55	0
4	KZF	A	304	13/13	0.90	0.12	35,46,66,66	0

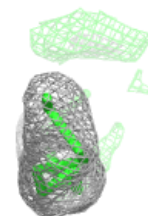
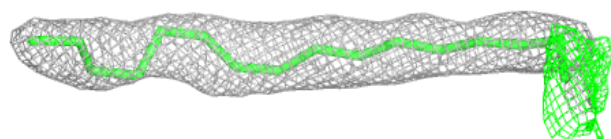
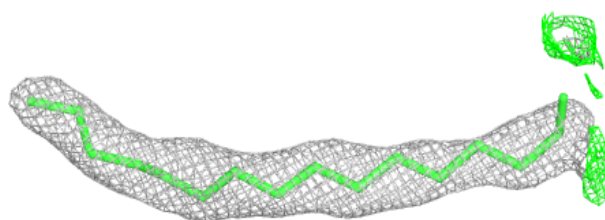
The following is a graphical depiction of the model fit to experimental electron density of all instances of the Ligand of Interest. In addition, ligands with molecular weight > 250 and outliers as shown on the geometry validation Tables will also be included. Each fit is shown from different orientation to approximate a three-dimensional view.

Electron density around D12 A 307:

$2mF_o-DF_c$ (at 0.7 rmsd) in gray
 mF_o-DF_c (at 3 rmsd) in purple (negative)
and green (positive)

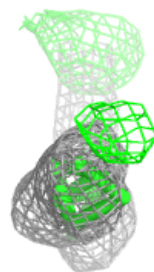
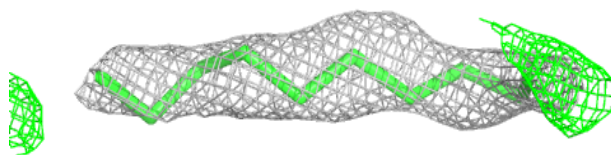
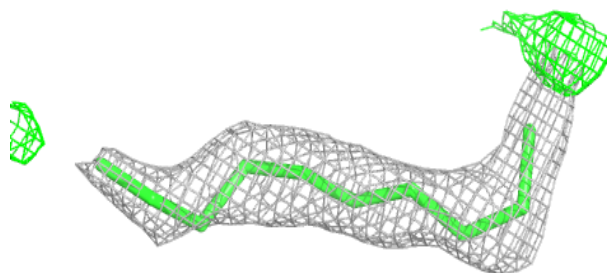
**Electron density around R16 A 308:**

$2mF_o-DF_c$ (at 0.7 rmsd) in gray
 mF_o-DF_c (at 3 rmsd) in purple (negative)
and green (positive)

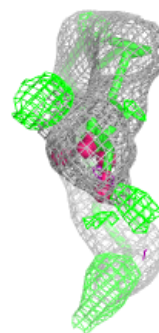
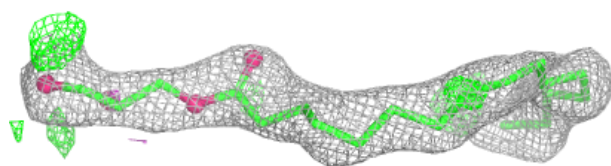
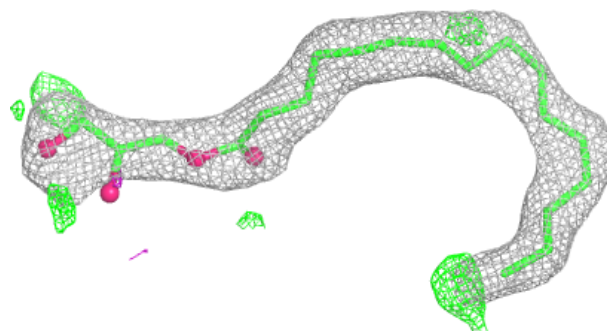


Electron density around D10 A 306:

$2mF_o-DF_c$ (at 0.7 rmsd) in gray
 mF_o-DF_c (at 3 rmsd) in purple (negative)
and green (positive)

**Electron density around EKG A 305:**

$2mF_o-DF_c$ (at 0.7 rmsd) in gray
 mF_o-DF_c (at 3 rmsd) in purple (negative)
and green (positive)



6.5 Other polymers [i](#)

There are no such residues in this entry.