



## wwPDB EM Validation Summary Report ⓘ

Nov 1, 2025 – 12:21 PM EDT

PDB ID : 9NNK / pdb\_00009nnk  
EMDB ID : EMD-49576  
Title : Cryo-EM structure of Retron-displaced free PtuAB complex, PtuA:PtuB (4:2)  
Authors : Wang, B.; Li, H.  
Deposited on : 2025-03-05  
Resolution : 3.15 Å(reported)

This is a wwPDB EM Validation Summary Report for a publicly released PDB entry.

We welcome your comments at [validation@mail.wwpdb.org](mailto:validation@mail.wwpdb.org)

A user guide is available at

<https://www.wwpdb.org/validation/2017/EMValidationReportHelp>

with specific help available everywhere you see the ⓘ symbol.

The types of validation reports are described at

<http://www.wwpdb.org/validation/2017/FAQs#types>.

---

The following versions of software and data (see [references ⓘ](#)) were used in the production of this report:

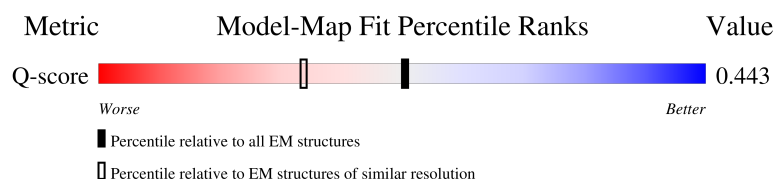
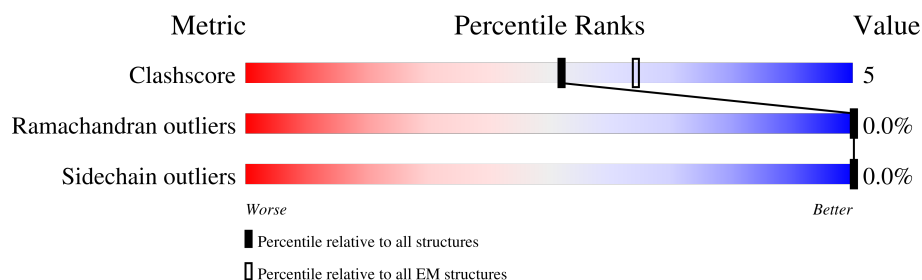
EMDB validation analysis : 0.0.1.dev129  
Mogul : 2022.3.0, CSD as543be (2022)  
MolProbity : 4-5-2 with Phenix2.0  
buster-report : 1.1.7 (2018)  
Percentile statistics : 20231227.v01 (using entries in the PDB archive December 27th 2023)  
EM percentile statistics : 202505.v01 (Using data in the EMDB archive up until May 2025)  
MapQ : 1.9.13  
Ideal geometry (proteins) : Engh & Huber (2001)  
Ideal geometry (DNA, RNA) : Parkinson et al. (1996)  
Validation Pipeline (wwPDB-VP) : 2.46

# 1 Overall quality at a glance

The following experimental techniques were used to determine the structure:  
*ELECTRON MICROSCOPY*

The reported resolution of this entry is 3.15 Å.

Percentile scores (ranging between 0-100) for global validation metrics of the entry are shown in the following graphic. The table shows the number of entries on which the scores are based.



Metric	Whole archive (#Entries)	EM structures (#Entries)	Similar EM resolution (#Entries, resolution range(Å))
Clashscore	210492	15764	-
Ramachandran outliers	207382	16835	-
Sidechain outliers	206894	16415	-
Q-score	-	25397	14486 ( 2.65 - 3.65 )

The table below summarises the geometric issues observed across the polymeric chains and their fit to the map. The red, orange, yellow and green segments of the bar indicate the fraction of residues that contain outliers for  $\geq 3$ , 2, 1 and 0 types of geometric quality criteria respectively. A grey segment represents the fraction of residues that are not modelled. The numeric value for each fraction is indicated below the corresponding segment, with a dot representing fractions  $\leq 5\%$ . The upper red bar (where present) indicates the fraction of residues that have poor fit to the EM map (all-atom inclusion  $< 40\%$ ). The numeric value is given above the bar.

Mol	Chain	Length	Quality of chain
1	C	550	<div> <div>15%</div> <div>88%</div> <div>12%</div> </div>
1	D	550	<div> <div>17%</div> <div>84%</div> <div>16%</div> </div>
1	E	550	<div> <div>22%</div> <div>87%</div> <div>13%</div> </div>
1	F	550	<div> <div>21%</div> <div>84%</div> <div>16%</div> </div>

Continued on next page...

*Continued from previous page...*

Mol	Chain	Length	Quality of chain
2	J	216	<div><div>25%</div><div><div></div><div>84%</div><div>14%</div><div></div></div><div></div></div>
2	K	216	<div><div>49%</div><div><div></div><div>83%</div><div>13%</div><div></div></div><div></div></div>

## 2 Entry composition

There are 3 unique types of molecules in this entry. The entry contains 21088 atoms, of which 0 are hydrogens and 0 are deuteriums.

In the tables below, the AltConf column contains the number of residues with at least one atom in alternate conformation and the Trace column contains the number of residues modelled with at most 2 atoms.

- Molecule 1 is a protein called Retreon I-A effector PtuA.

Mol	Chain	Residues	Atoms					AltConf	Trace
1	C	550	Total	C	N	O	S	0	0
			4389	2763	770	841	15		
1	D	550	Total	C	N	O	S	0	0
			4389	2763	770	841	15		
1	E	550	Total	C	N	O	S	0	0
			4389	2763	770	841	15		
1	F	550	Total	C	N	O	S	0	0
			4389	2763	770	841	15		

There are 156 discrepancies between the modelled and reference sequences:

Chain	Residue	Modelled	Actual	Comment	Reference
C	25	SER	THR	conflict	UNP P0DV91
C	27	LYS	ASN	conflict	UNP P0DV91
C	28	ALA	MET	conflict	UNP P0DV91
C	37	GLY	ASP	conflict	UNP P0DV91
C	42	MET	THR	conflict	UNP P0DV91
C	57	ILE	THR	conflict	UNP P0DV91
C	84	LEU	PHE	conflict	UNP P0DV91
C	130	MET	LEU	conflict	UNP P0DV91
C	139	ASP	ASN	conflict	UNP P0DV91
C	142	SER	ALA	conflict	UNP P0DV91
C	180	LYS	ARG	conflict	UNP P0DV91
C	192	VAL	ALA	conflict	UNP P0DV91
C	193	ASN	LYS	conflict	UNP P0DV91
C	215	ILE	THR	conflict	UNP P0DV91
C	219	THR	ALA	conflict	UNP P0DV91
C	232	THR	ALA	conflict	UNP P0DV91
C	254	VAL	ILE	conflict	UNP P0DV91
C	274	THR	SER	conflict	UNP P0DV91
C	291	PHE	LEU	conflict	UNP P0DV91
C	297	ILE	SER	conflict	UNP P0DV91
C	307	ARG	LYS	conflict	UNP P0DV91
C	308	VAL	MET	conflict	UNP P0DV91

*Continued on next page...*

*Continued from previous page...*

Chain	Residue	Modelled	Actual	Comment	Reference
C	309	LEU	VAL	conflict	UNP P0DV91
C	321	ALA	SER	conflict	UNP P0DV91
C	331	ASN	LYS	conflict	UNP P0DV91
C	337	ILE	THR	conflict	UNP P0DV91
C	361	LEU	GLN	conflict	UNP P0DV91
C	396	GLN	GLU	conflict	UNP P0DV91
C	416	ALA	VAL	conflict	UNP P0DV91
C	444	GLU	ASP	conflict	UNP P0DV91
C	450	ASP	ASN	conflict	UNP P0DV91
C	478	SER	PRO	conflict	UNP P0DV91
C	491	ASN	ASP	conflict	UNP P0DV91
C	506	HIS	GLN	conflict	UNP P0DV91
C	509	VAL	GLU	conflict	UNP P0DV91
C	513	GLN	LYS	conflict	UNP P0DV91
C	516	ALA	THR	conflict	UNP P0DV91
C	523	ILE	ALA	conflict	UNP P0DV91
C	541	LEU	ILE	conflict	UNP P0DV91
D	25	SER	THR	conflict	UNP P0DV91
D	27	LYS	ASN	conflict	UNP P0DV91
D	28	ALA	MET	conflict	UNP P0DV91
D	37	GLY	ASP	conflict	UNP P0DV91
D	42	MET	THR	conflict	UNP P0DV91
D	57	ILE	THR	conflict	UNP P0DV91
D	84	LEU	PHE	conflict	UNP P0DV91
D	130	MET	LEU	conflict	UNP P0DV91
D	139	ASP	ASN	conflict	UNP P0DV91
D	142	SER	ALA	conflict	UNP P0DV91
D	180	LYS	ARG	conflict	UNP P0DV91
D	192	VAL	ALA	conflict	UNP P0DV91
D	193	ASN	LYS	conflict	UNP P0DV91
D	215	ILE	THR	conflict	UNP P0DV91
D	219	THR	ALA	conflict	UNP P0DV91
D	232	THR	ALA	conflict	UNP P0DV91
D	254	VAL	ILE	conflict	UNP P0DV91
D	274	THR	SER	conflict	UNP P0DV91
D	291	PHE	LEU	conflict	UNP P0DV91
D	297	ILE	SER	conflict	UNP P0DV91
D	307	ARG	LYS	conflict	UNP P0DV91
D	308	VAL	MET	conflict	UNP P0DV91
D	309	LEU	VAL	conflict	UNP P0DV91
D	321	ALA	SER	conflict	UNP P0DV91
D	331	ASN	LYS	conflict	UNP P0DV91

*Continued on next page...*

*Continued from previous page...*

Chain	Residue	Modelled	Actual	Comment	Reference
D	337	ILE	THR	conflict	UNP P0DV91
D	361	LEU	GLN	conflict	UNP P0DV91
D	396	GLN	GLU	conflict	UNP P0DV91
D	416	ALA	VAL	conflict	UNP P0DV91
D	444	GLU	ASP	conflict	UNP P0DV91
D	450	ASP	ASN	conflict	UNP P0DV91
D	478	SER	PRO	conflict	UNP P0DV91
D	491	ASN	ASP	conflict	UNP P0DV91
D	506	HIS	GLN	conflict	UNP P0DV91
D	509	VAL	GLU	conflict	UNP P0DV91
D	513	GLN	LYS	conflict	UNP P0DV91
D	516	ALA	THR	conflict	UNP P0DV91
D	523	ILE	ALA	conflict	UNP P0DV91
D	541	LEU	ILE	conflict	UNP P0DV91
E	25	SER	THR	conflict	UNP P0DV91
E	27	LYS	ASN	conflict	UNP P0DV91
E	28	ALA	MET	conflict	UNP P0DV91
E	37	GLY	ASP	conflict	UNP P0DV91
E	42	MET	THR	conflict	UNP P0DV91
E	57	ILE	THR	conflict	UNP P0DV91
E	84	LEU	PHE	conflict	UNP P0DV91
E	130	MET	LEU	conflict	UNP P0DV91
E	139	ASP	ASN	conflict	UNP P0DV91
E	142	SER	ALA	conflict	UNP P0DV91
E	180	LYS	ARG	conflict	UNP P0DV91
E	192	VAL	ALA	conflict	UNP P0DV91
E	193	ASN	LYS	conflict	UNP P0DV91
E	215	ILE	THR	conflict	UNP P0DV91
E	219	THR	ALA	conflict	UNP P0DV91
E	232	THR	ALA	conflict	UNP P0DV91
E	254	VAL	ILE	conflict	UNP P0DV91
E	274	THR	SER	conflict	UNP P0DV91
E	291	PHE	LEU	conflict	UNP P0DV91
E	297	ILE	SER	conflict	UNP P0DV91
E	307	ARG	LYS	conflict	UNP P0DV91
E	308	VAL	MET	conflict	UNP P0DV91
E	309	LEU	VAL	conflict	UNP P0DV91
E	321	ALA	SER	conflict	UNP P0DV91
E	331	ASN	LYS	conflict	UNP P0DV91
E	337	ILE	THR	conflict	UNP P0DV91
E	361	LEU	GLN	conflict	UNP P0DV91
E	396	GLN	GLU	conflict	UNP P0DV91

*Continued on next page...*

*Continued from previous page...*

Chain	Residue	Modelled	Actual	Comment	Reference
E	416	ALA	VAL	conflict	UNP P0DV91
E	444	GLU	ASP	conflict	UNP P0DV91
E	450	ASP	ASN	conflict	UNP P0DV91
E	478	SER	PRO	conflict	UNP P0DV91
E	491	ASN	ASP	conflict	UNP P0DV91
E	506	HIS	GLN	conflict	UNP P0DV91
E	509	VAL	GLU	conflict	UNP P0DV91
E	513	GLN	LYS	conflict	UNP P0DV91
E	516	ALA	THR	conflict	UNP P0DV91
E	523	ILE	ALA	conflict	UNP P0DV91
E	541	LEU	ILE	conflict	UNP P0DV91
F	25	SER	THR	conflict	UNP P0DV91
F	27	LYS	ASN	conflict	UNP P0DV91
F	28	ALA	MET	conflict	UNP P0DV91
F	37	GLY	ASP	conflict	UNP P0DV91
F	42	MET	THR	conflict	UNP P0DV91
F	57	ILE	THR	conflict	UNP P0DV91
F	84	LEU	PHE	conflict	UNP P0DV91
F	130	MET	LEU	conflict	UNP P0DV91
F	139	ASP	ASN	conflict	UNP P0DV91
F	142	SER	ALA	conflict	UNP P0DV91
F	180	LYS	ARG	conflict	UNP P0DV91
F	192	VAL	ALA	conflict	UNP P0DV91
F	193	ASN	LYS	conflict	UNP P0DV91
F	215	ILE	THR	conflict	UNP P0DV91
F	219	THR	ALA	conflict	UNP P0DV91
F	232	THR	ALA	conflict	UNP P0DV91
F	254	VAL	ILE	conflict	UNP P0DV91
F	274	THR	SER	conflict	UNP P0DV91
F	291	PHE	LEU	conflict	UNP P0DV91
F	297	ILE	SER	conflict	UNP P0DV91
F	307	ARG	LYS	conflict	UNP P0DV91
F	308	VAL	MET	conflict	UNP P0DV91
F	309	LEU	VAL	conflict	UNP P0DV91
F	321	ALA	SER	conflict	UNP P0DV91
F	331	ASN	LYS	conflict	UNP P0DV91
F	337	ILE	THR	conflict	UNP P0DV91
F	361	LEU	GLN	conflict	UNP P0DV91
F	396	GLN	GLU	conflict	UNP P0DV91
F	416	ALA	VAL	conflict	UNP P0DV91
F	444	GLU	ASP	conflict	UNP P0DV91
F	450	ASP	ASN	conflict	UNP P0DV91

*Continued on next page...*

*Continued from previous page...*

Chain	Residue	Modelled	Actual	Comment	Reference
F	478	SER	PRO	conflict	UNP P0DV91
F	491	ASN	ASP	conflict	UNP P0DV91
F	506	HIS	GLN	conflict	UNP P0DV91
F	509	VAL	GLU	conflict	UNP P0DV91
F	513	GLN	LYS	conflict	UNP P0DV91
F	516	ALA	THR	conflict	UNP P0DV91
F	523	ILE	ALA	conflict	UNP P0DV91
F	541	LEU	ILE	conflict	UNP P0DV91

- Molecule 2 is a protein called Retron I-A effector PtuB.

Mol	Chain	Residues	Atoms					AltConf	Trace
2	J	211	Total	C	N	O	S	0	0
			1712	1083	293	325	11		
2	K	211	Total	C	N	O	S	0	0
			1712	1083	293	325	11		

There are 24 discrepancies between the modelled and reference sequences:

Chain	Residue	Modelled	Actual	Comment	Reference
J	2	ARG	LYS	conflict	UNP P0DV92
J	9	ARG	SER	conflict	UNP P0DV92
J	17	ILE	THR	conflict	UNP P0DV92
J	41	GLY	GLU	conflict	UNP P0DV92
J	53	CYS	ARG	conflict	UNP P0DV92
J	72	ASN	SER	conflict	UNP P0DV92
J	82	ARG	LYS	conflict	UNP P0DV92
J	156	PHE	LEU	conflict	UNP P0DV92
J	175	THR	SER	conflict	UNP P0DV92
J	181	ASP	GLU	conflict	UNP P0DV92
J	201	TYR	PHE	conflict	UNP P0DV92
J	211	PHE	SER	conflict	UNP P0DV92
K	2	ARG	LYS	conflict	UNP P0DV92
K	9	ARG	SER	conflict	UNP P0DV92
K	17	ILE	THR	conflict	UNP P0DV92
K	41	GLY	GLU	conflict	UNP P0DV92
K	53	CYS	ARG	conflict	UNP P0DV92
K	72	ASN	SER	conflict	UNP P0DV92
K	82	ARG	LYS	conflict	UNP P0DV92
K	156	PHE	LEU	conflict	UNP P0DV92
K	175	THR	SER	conflict	UNP P0DV92
K	181	ASP	GLU	conflict	UNP P0DV92

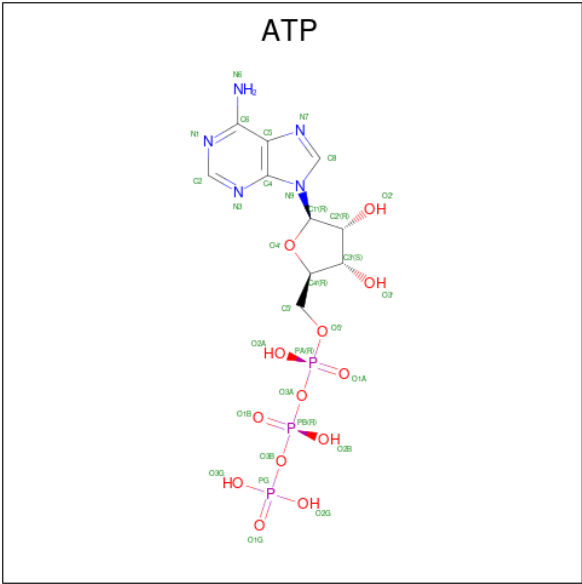
*Continued on next page...*



Continued from previous page...

Chain	Residue	Modelled	Actual	Comment	Reference
K	201	TYR	PHE	conflict	UNP P0DV92
K	211	PHE	SER	conflict	UNP P0DV92

- Molecule 3 is ADENOSINE-5'-TRIPHOSPHATE (CCD ID: ATP) (formula: C<sub>10</sub>H<sub>16</sub>N<sub>5</sub>O<sub>13</sub>P<sub>3</sub>) (labeled as "Ligand of Interest" by depositor).

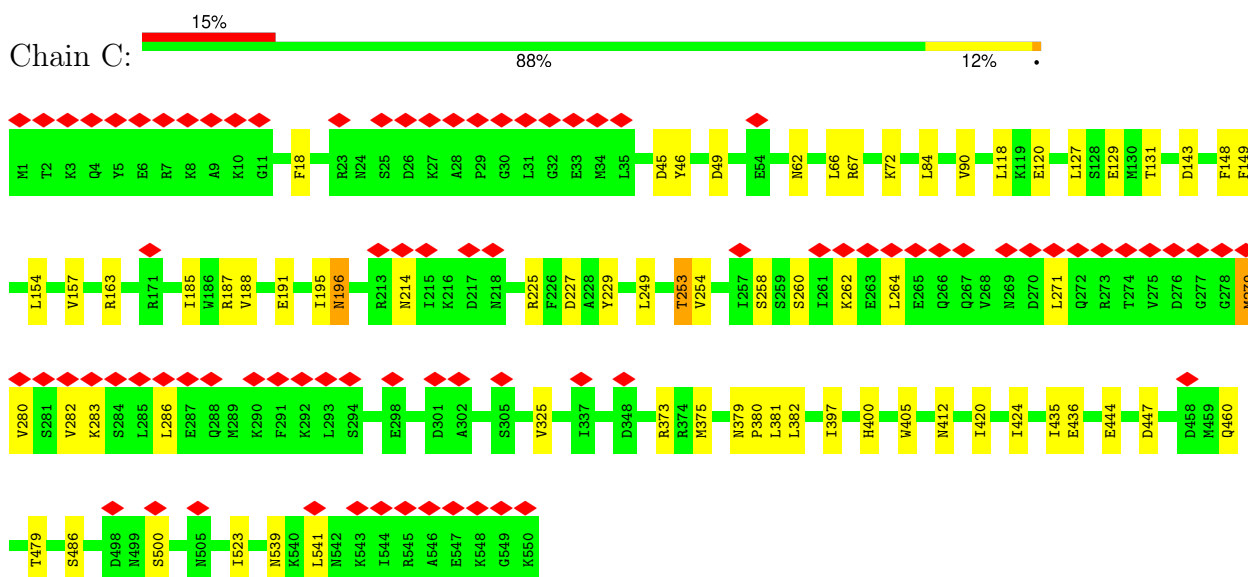


Mol	Chain	Residues	Atoms					AltConf
3	C	1	Total	C	N	O	P	0
			27	10	5	10	2	
3	D	1	Total	C	N	O	P	0
			27	10	5	10	2	
3	E	1	Total	C	N	O	P	0
			27	10	5	10	2	
3	E	1	Total	C	N	O	P	0
			27	10	5	10	2	

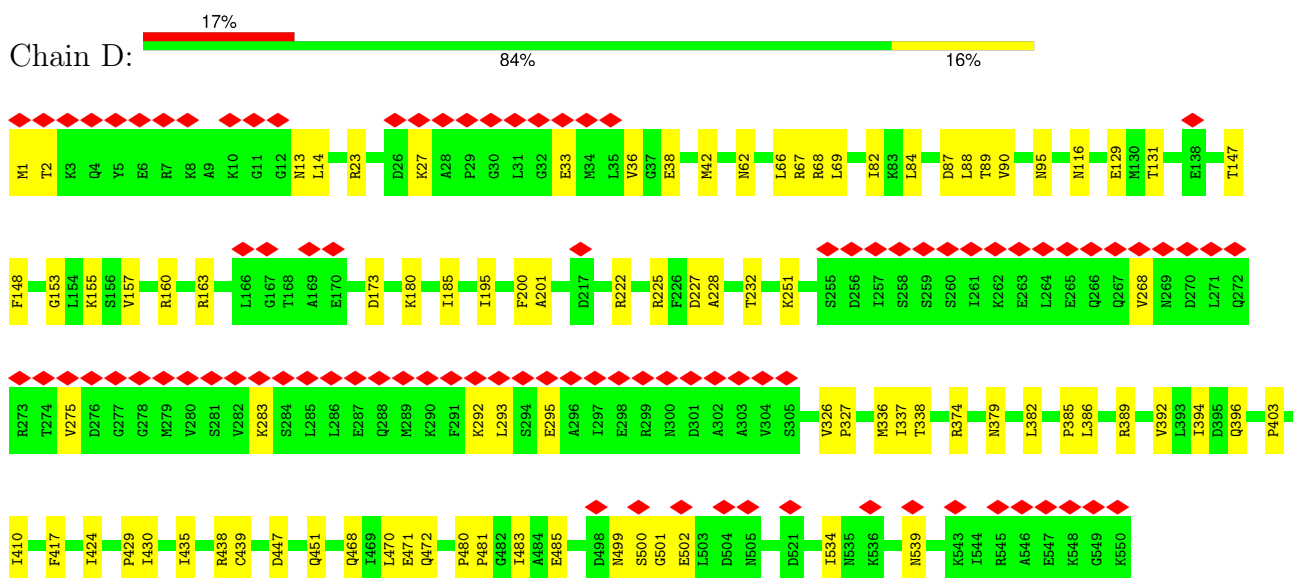
### 3 Residue-property plots

These plots are drawn for all protein, RNA, DNA and oligosaccharide chains in the entry. The first graphic for a chain summarises the proportions of the various outlier classes displayed in the second graphic. The second graphic shows the sequence view annotated by issues in geometry and atom inclusion in map density. Residues are color-coded according to the number of geometric quality criteria for which they contain at least one outlier: green = 0, yellow = 1, orange = 2 and red = 3 or more. A red diamond above a residue indicates a poor fit to the EM map for this residue (all-atom inclusion < 40%). Stretches of 2 or more consecutive residues without any outlier are shown as a green connector. Residues present in the sample, but not in the model, are shown in grey.

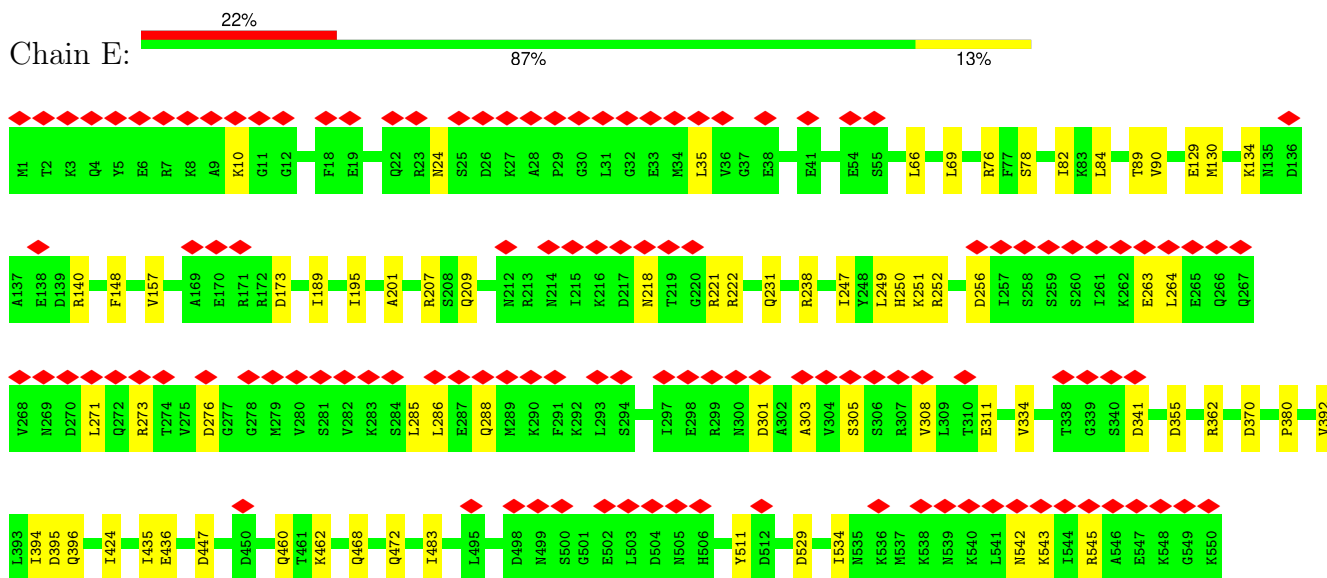
- Molecule 1: Retreon I-A effector PtuA



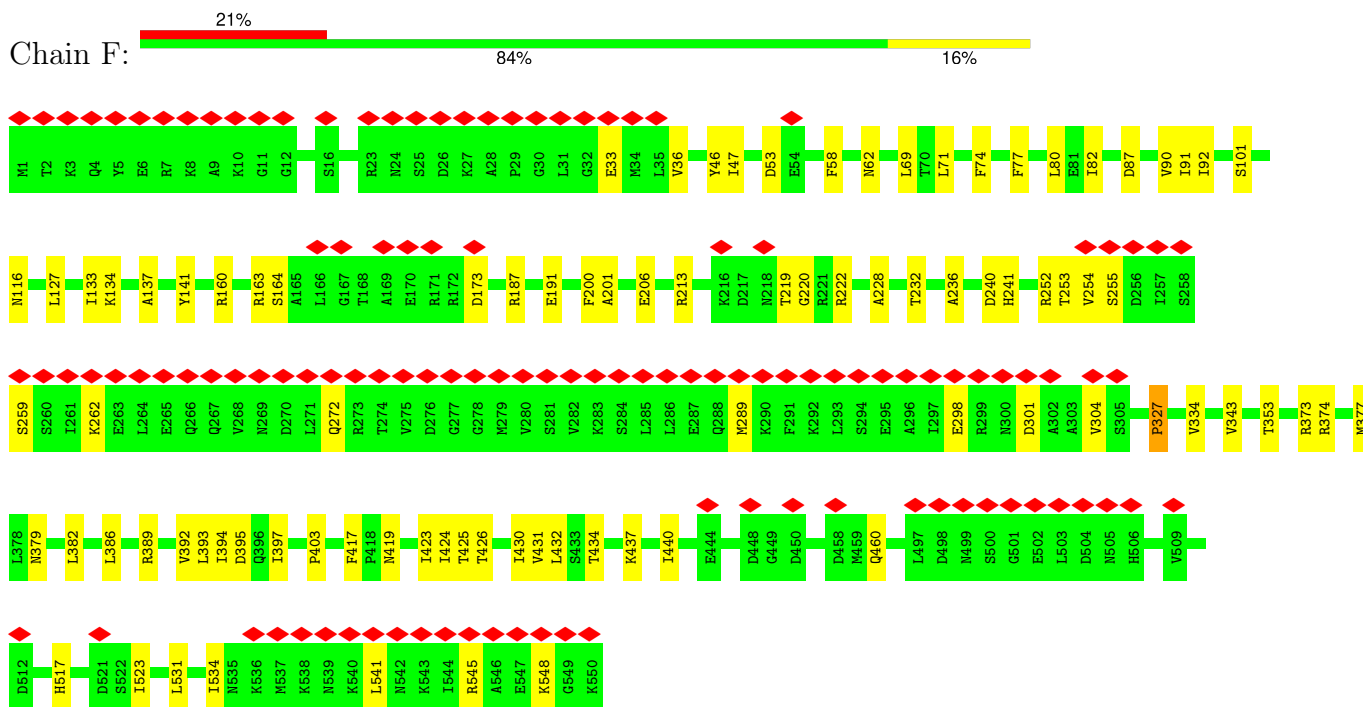
- Molecule 1: Retreon I-A effector PtuA



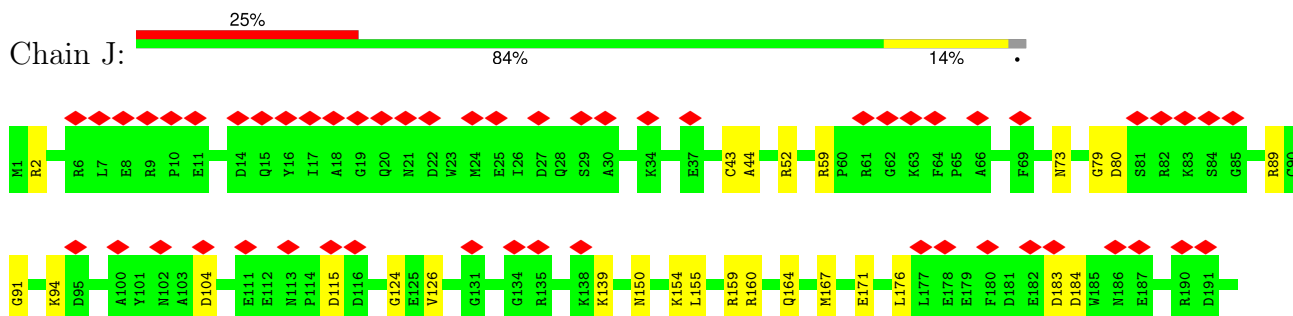
- Molecule 1: Retreon I-A effector PtuA

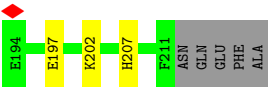


- Molecule 1: Retreon I-A effector PtuA

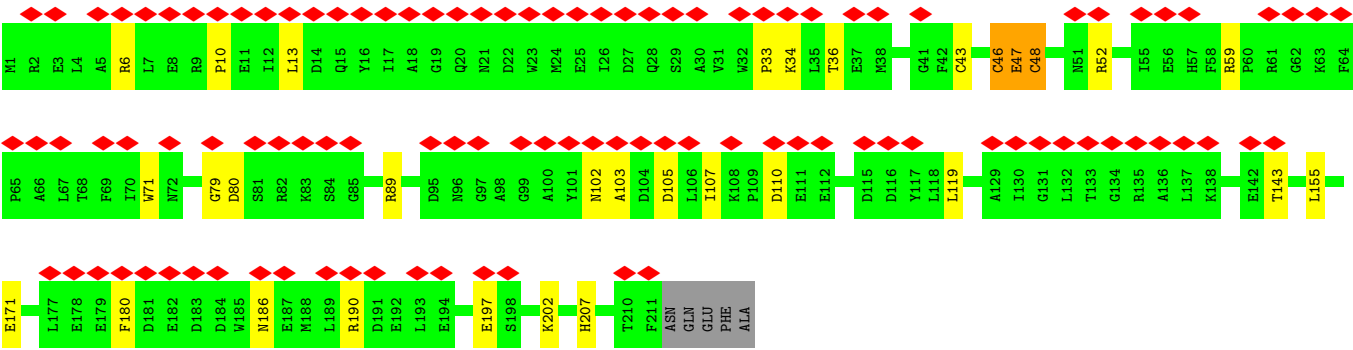
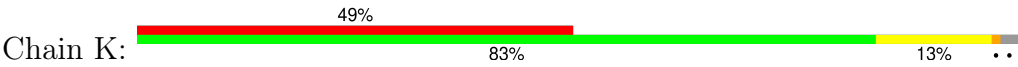


- Molecule 2: Retron I-A effector PtuB





• Molecule 2: Retron I-A effector PtuB



## 4 Experimental information

Property	Value	Source
EM reconstruction method	SINGLE PARTICLE	Depositor
Imposed symmetry	POINT, Not provided	
Number of particles used	281151	Depositor
Resolution determination method	FSC 0.143 CUT-OFF	Depositor
CTF correction method	PHASE FLIPPING AND AMPLITUDE CORRECTION	Depositor
Microscope	TFS KRIOS	Depositor
Voltage (kV)	300	Depositor
Electron dose ( $e^-/\text{\AA}^2$ )	50	Depositor
Minimum defocus (nm)	1000	Depositor
Maximum defocus (nm)	1700	Depositor
Magnification	Not provided	
Image detector	GATAN K3 BIOCONTINUUM (6k x 4k)	Depositor
Maximum map value	1.815	Depositor
Minimum map value	-1.355	Depositor
Average map value	0.000	Depositor
Map value standard deviation	0.033	Depositor
Recommended contour level	0.117	Depositor
Map size (Å)	291.456, 291.456, 291.456	wwPDB
Map dimensions	352, 352, 352	wwPDB
Map angles (°)	90.0, 90.0, 90.0	wwPDB
Pixel spacing (Å)	0.828, 0.828, 0.828	Depositor

## 5 Model quality [i](#)

### 5.1 Standard geometry [i](#)

Bond lengths and bond angles in the following residue types are not validated in this section: ATP

The Z score for a bond length (or angle) is the number of standard deviations the observed value is removed from the expected value. A bond length (or angle) with  $|Z| > 5$  is considered an outlier worth inspection. RMSZ is the root-mean-square of all Z scores of the bond lengths (or angles).

Mol	Chain	Bond lengths		Bond angles	
		RMSZ	# $ Z  > 5$	RMSZ	# $ Z  > 5$
1	C	0.27	0/4463	0.63	5/6019 (0.1%)
1	D	0.25	0/4463	0.56	2/6019 (0.0%)
1	E	0.23	0/4463	0.55	0/6019
1	F	0.37	3/4463 (0.1%)	0.72	6/6019 (0.1%)
2	J	0.22	0/1752	0.56	0/2368
2	K	0.26	0/1752	0.64	2/2368 (0.1%)
All	All	0.28	3/21356 (0.0%)	0.61	15/28812 (0.1%)

Chiral center outliers are detected by calculating the chiral volume of a chiral center and verifying if the center is modelled as a planar moiety or with the opposite hand. A planarity outlier is detected by checking planarity of atoms in a peptide group, atoms in a mainchain group or atoms of a sidechain that are expected to be planar.

Mol	Chain	#Chirality outliers	#Planarity outliers
1	D	0	1
1	F	0	1
2	K	0	1
All	All	0	3

All (3) bond length outliers are listed below:

Mol	Chain	Res	Type	Atoms	Z	Observed(Å)	Ideal(Å)
1	F	327	PRO	CG-CD	-14.65	1.00	1.50
1	F	327	PRO	CB-CG	5.37	1.76	1.49
1	F	327	PRO	N-CD	5.24	1.55	1.47

The worst 5 of 15 bond angle outliers are listed below:

Mol	Chain	Res	Type	Atoms	Z	Observed(°)	Ideal(°)
1	F	327	PRO	N-CD-CG	-16.04	79.14	103.20

*Continued on next page...*

*Continued from previous page...*

Mol	Chain	Res	Type	Atoms	Z	Observed(°)	Ideal(°)
1	F	259	SER	CA-C-N	11.33	142.09	121.70
1	F	259	SER	C-N-CA	11.33	142.09	121.70
2	K	46	CYS	CA-CB-SG	10.65	138.90	114.40
1	F	327	PRO	N-CA-CB	-10.10	93.60	103.19

There are no chirality outliers.

All (3) planarity outliers are listed below:

Mol	Chain	Res	Type	Group
1	D	338	THR	Peptide
1	F	220	GLY	Peptide
2	K	47	GLU	Peptide

## 5.2 Too-close contacts [i](#)

In the following table, the Non-H and H(model) columns list the number of non-hydrogen atoms and hydrogen atoms in the chain respectively. The H(added) column lists the number of hydrogen atoms added and optimized by MolProbity. The Clashes column lists the number of clashes within the asymmetric unit, whereas Symm-Clashes lists symmetry-related clashes.

Mol	Chain	Non-H	H(model)	H(added)	Clashes	Symm-Clashes
1	C	4389	0	4403	37	0
1	D	4389	0	4403	53	0
1	E	4389	0	4402	48	0
1	F	4389	0	4403	57	0
2	J	1712	0	1644	18	0
2	K	1712	0	1639	18	0
3	C	27	0	12	1	0
3	D	27	0	12	1	0
3	E	54	0	19	0	0
All	All	21088	0	20937	217	0

The all-atom clashscore is defined as the number of clashes found per 1000 atoms (including hydrogen atoms). The all-atom clashscore for this structure is 5.

The worst 5 of 217 close contacts within the same asymmetric unit are listed below, sorted by their clash magnitude.

Atom-1	Atom-2	Interatomic distance (Å)	Clash overlap (Å)
1:F:327:PRO:CG	1:F:327:PRO:CB	1.76	1.33

*Continued on next page...*

Continued from previous page...

Atom-1	Atom-2	Interatomic distance (Å)	Clash overlap (Å)
1:C:45:ASP:O	1:C:49:ASP:HB2	1.89	0.72
1:C:280:VAL:HA	1:C:283:LYS:HB2	1.70	0.72
1:F:334:VAL:HG22	1:F:343:VAL:HG12	1.75	0.67
1:D:14:LEU:HD21	1:D:185:ILE:HG21	1.83	0.61

There are no symmetry-related clashes.

## 5.3 Torsion angles [i](#)

### 5.3.1 Protein backbone [i](#)

In the following table, the Percentiles column shows the percent Ramachandran outliers of the chain as a percentile score with respect to all PDB entries followed by that with respect to all EM entries.

The Analysed column shows the number of residues for which the backbone conformation was analysed, and the total number of residues.

Mol	Chain	Analysed	Favoured	Allowed	Outliers	Percentiles	
1	C	548/550 (100%)	516 (94%)	31 (6%)	1 (0%)	44	72
1	D	548/550 (100%)	519 (95%)	29 (5%)	0	100	100
1	E	548/550 (100%)	519 (95%)	29 (5%)	0	100	100
1	F	548/550 (100%)	500 (91%)	48 (9%)	0	100	100
2	J	209/216 (97%)	200 (96%)	9 (4%)	0	100	100
2	K	209/216 (97%)	196 (94%)	13 (6%)	0	100	100
All	All	2610/2632 (99%)	2450 (94%)	159 (6%)	1 (0%)	100	100

All (1) Ramachandran outliers are listed below:

Mol	Chain	Res	Type
1	C	254	VAL

### 5.3.2 Protein sidechains [i](#)

In the following table, the Percentiles column shows the percent sidechain outliers of the chain as a percentile score with respect to all PDB entries followed by that with respect to all EM entries.

The Analysed column shows the number of residues for which the sidechain conformation was



analysed, and the total number of residues.

Mol	Chain	Analysed	Rotameric	Outliers	Percentiles	
1	C	489/489 (100%)	488 (100%)	1 (0%)	92	96
1	D	489/489 (100%)	489 (100%)	0	100	100
1	E	489/489 (100%)	489 (100%)	0	100	100
1	F	489/489 (100%)	489 (100%)	0	100	100
2	J	180/184 (98%)	180 (100%)	0	100	100
2	K	180/184 (98%)	180 (100%)	0	100	100
All	All	2316/2324 (100%)	2315 (100%)	1 (0%)	100	100

All (1) residues with a non-rotameric sidechain are listed below:

Mol	Chain	Res	Type
1	C	196	ASN

Sometimes sidechains can be flipped to improve hydrogen bonding and reduce clashes. 5 of 24 such sidechains are listed below:

Mol	Chain	Res	Type
1	E	241	HIS
1	E	517	HIS
1	E	508	GLN
1	F	22	GLN
1	C	542	ASN

### 5.3.3 RNA ⓘ

There are no RNA molecules in this entry.

## 5.4 Non-standard residues in protein, DNA, RNA chains ⓘ

There are no non-standard protein/DNA/RNA residues in this entry.

## 5.5 Carbohydrates ⓘ

There are no oligosaccharides in this entry.

## 5.6 Ligand geometry

4 ligands are modelled in this entry.

In the following table, the Counts columns list the number of bonds (or angles) for which Mogul statistics could be retrieved, the number of bonds (or angles) that are observed in the model and the number of bonds (or angles) that are defined in the Chemical Component Dictionary. The Link column lists molecule types, if any, to which the group is linked. The Z score for a bond length (or angle) is the number of standard deviations the observed value is removed from the expected value. A bond length (or angle) with  $|Z| > 2$  is considered an outlier worth inspection. RMSZ is the root-mean-square of all Z scores of the bond lengths (or angles).

Mol	Type	Chain	Res	Link	Bond lengths			Bond angles		
					Counts	RMSZ	# $ Z  > 2$	Counts	RMSZ	# $ Z  > 2$
3	ATP	E	601	-	24,29,33	0.73	0	29,45,52	0.65	1 (3%)
3	ATP	D	601	-	24,29,33	0.72	0	29,45,52	0.66	1 (3%)
3	ATP	E	602	-	24,29,33	0.71	0	29,45,52	0.68	1 (3%)
3	ATP	C	701	-	24,29,33	0.73	0	29,45,52	0.65	1 (3%)

In the following table, the Chirals column lists the number of chiral outliers, the number of chiral centers analysed, the number of these observed in the model and the number defined in the Chemical Component Dictionary. Similar counts are reported in the Torsion and Rings columns. '-' means no outliers of that kind were identified.

Mol	Type	Chain	Res	Link	Chirals	Torsions	Rings
3	ATP	E	601	-	-	4/12/32/38	0/3/3/3
3	ATP	D	601	-	-	7/12/32/38	0/3/3/3
3	ATP	E	602	-	-	5/12/32/38	0/3/3/3
3	ATP	C	701	-	-	6/12/32/38	0/3/3/3

There are no bond length outliers.

All (4) bond angle outliers are listed below:

Mol	Chain	Res	Type	Atoms	Z	Observed(°)	Ideal(°)
3	E	602	ATP	C5-C6-N6	2.34	123.88	120.31
3	C	701	ATP	C5-C6-N6	2.32	123.84	120.31
3	D	601	ATP	C5-C6-N6	2.32	123.84	120.31
3	E	601	ATP	C5-C6-N6	2.18	123.64	120.31

There are no chirality outliers.

5 of 22 torsion outliers are listed below:

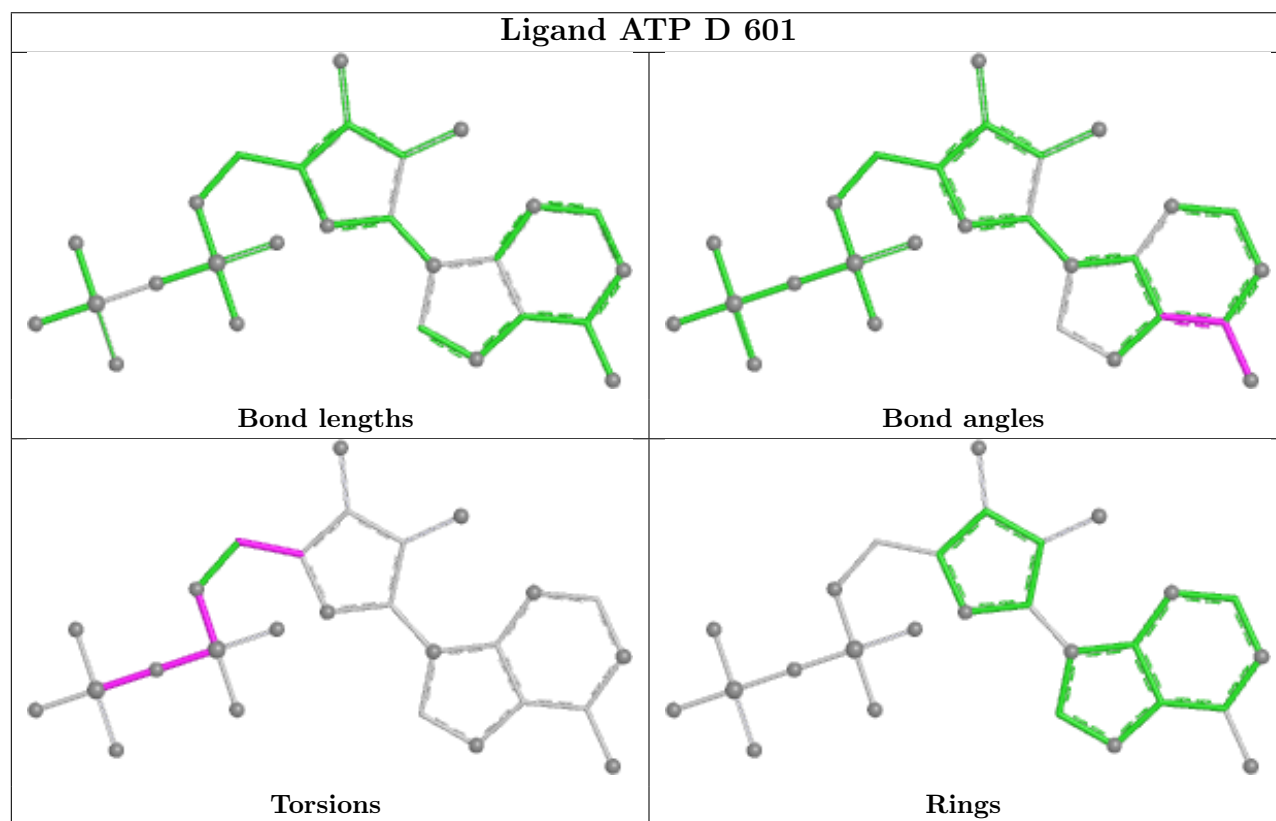
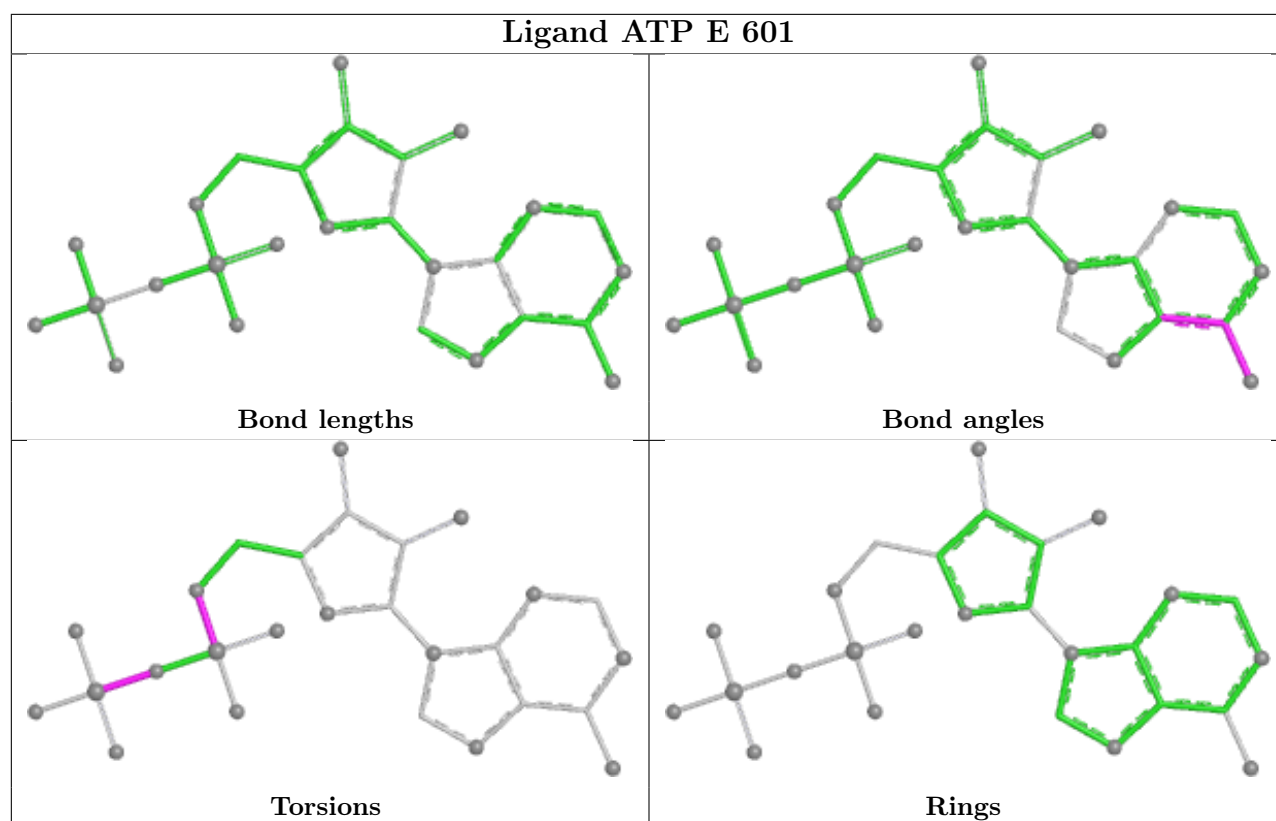
Mol	Chain	Res	Type	Atoms
3	C	701	ATP	C5'-O5'-PA-O1A
3	C	701	ATP	C5'-O5'-PA-O2A
3	C	701	ATP	C5'-O5'-PA-O3A
3	D	601	ATP	PA-O3A-PB-O2B
3	D	601	ATP	C5'-O5'-PA-O1A

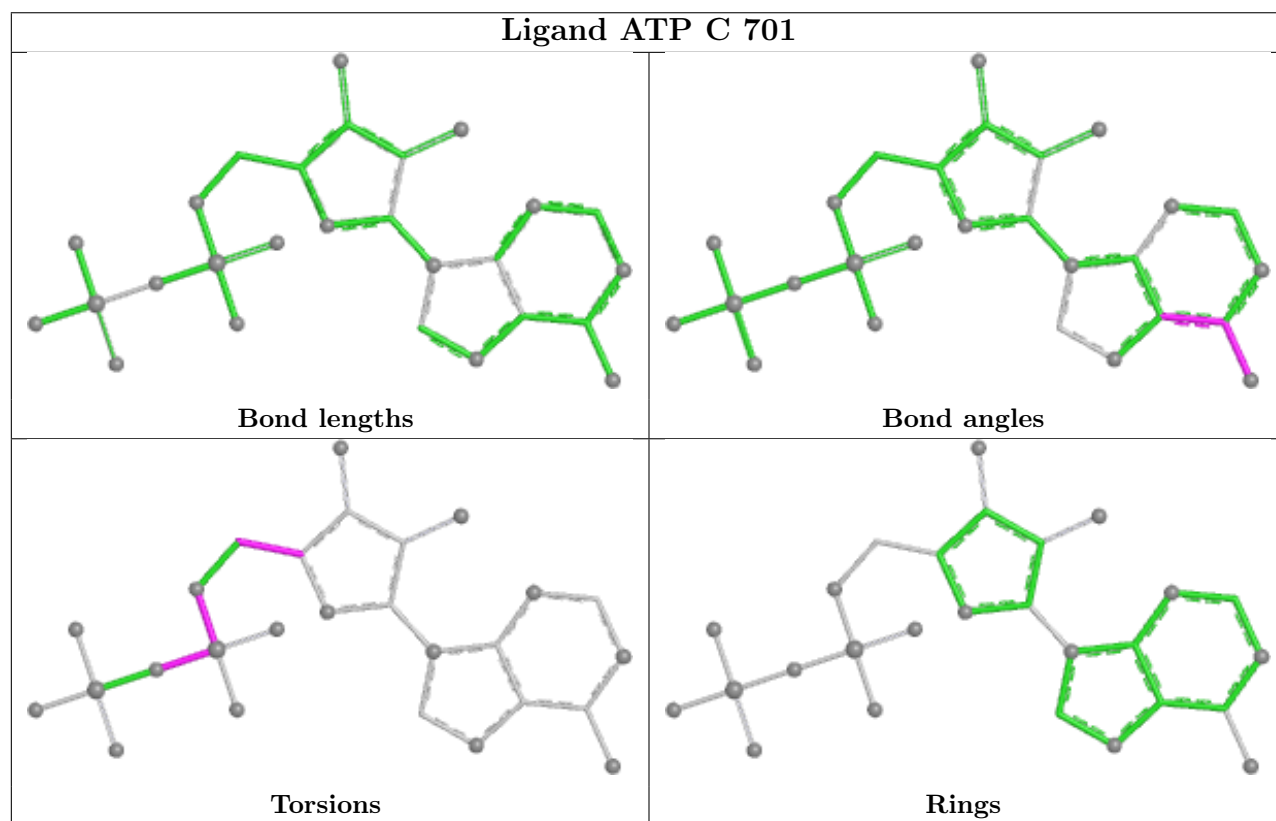
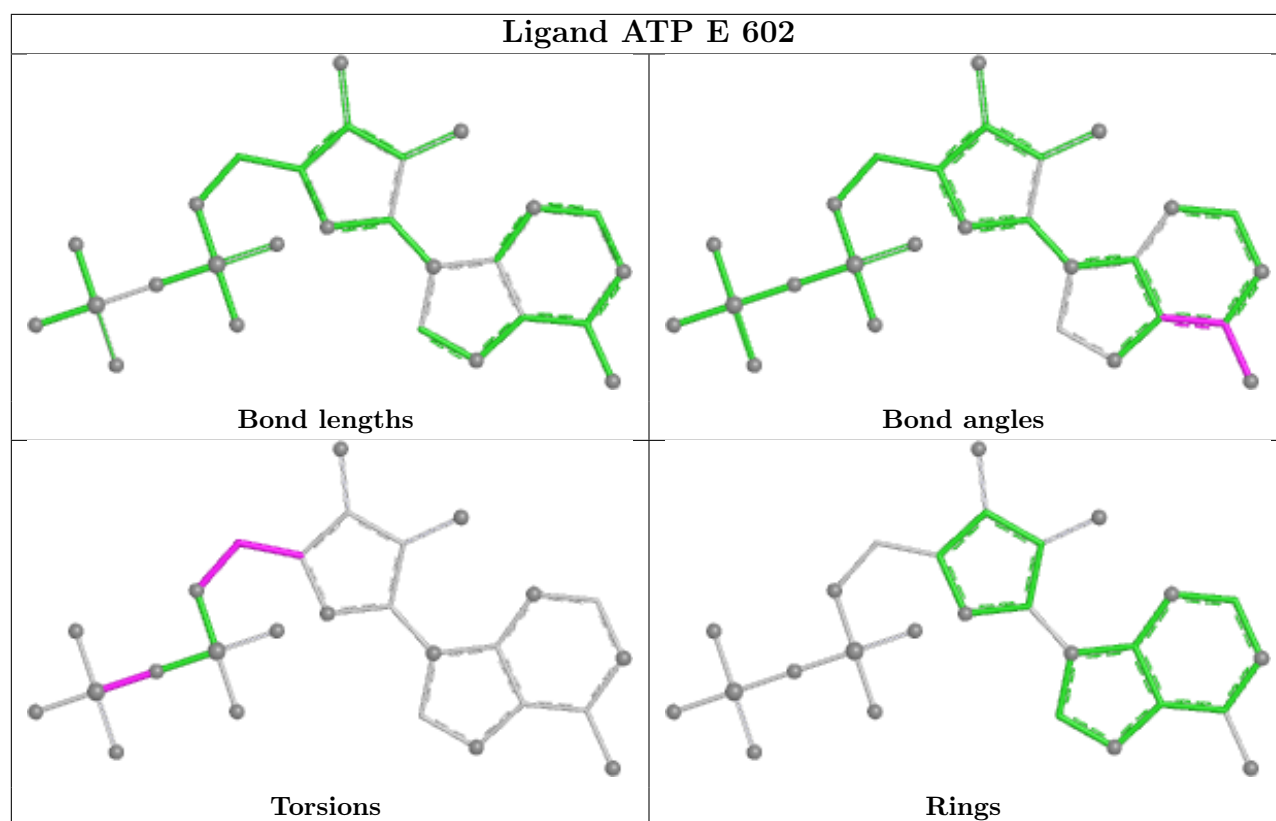
There are no ring outliers.

2 monomers are involved in 2 short contacts:

Mol	Chain	Res	Type	Clashes	Symm-Clashes
3	D	601	ATP	1	0
3	C	701	ATP	1	0

The following is a two-dimensional graphical depiction of Mogul quality analysis of bond lengths, bond angles, torsion angles, and ring geometry for all instances of the Ligand of Interest. In addition, ligands with molecular weight > 250 and outliers as shown on the validation Tables will also be included. For torsion angles, if less than 5% of the Mogul distribution of torsion angles is within 10 degrees of the torsion angle in question, then that torsion angle is considered an outlier. Any bond that is central to one or more torsion angles identified as an outlier by Mogul will be highlighted in the graph. For rings, the root-mean-square deviation (RMSD) between the ring in question and similar rings identified by Mogul is calculated over all ring torsion angles. If the average RMSD is greater than 60 degrees and the minimal RMSD between the ring in question and any Mogul-identified rings is also greater than 60 degrees, then that ring is considered an outlier. The outliers are highlighted in purple. The color gray indicates Mogul did not find sufficient equivalents in the CSD to analyse the geometry.





## 5.7 Other polymers

There are no such residues in this entry.

## 5.8 Polymer linkage issues

There are no chain breaks in this entry.

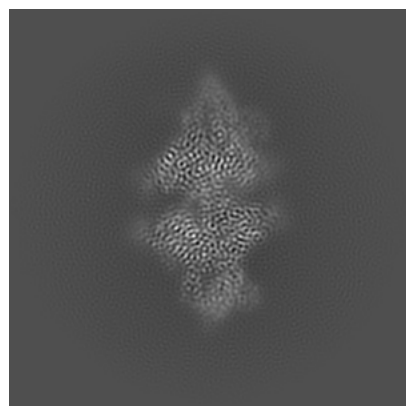
## 6 Map visualisation [i](#)

This section contains visualisations of the EMDB entry EMD-49576. These allow visual inspection of the internal detail of the map and identification of artifacts.

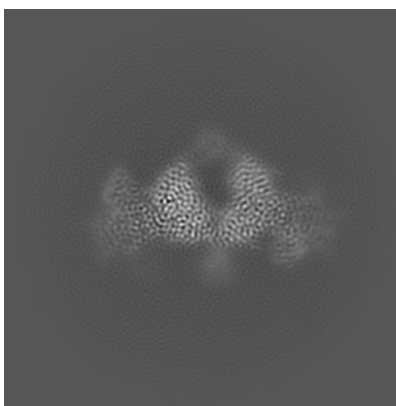
Images derived from a raw map, generated by summing the deposited half-maps, are presented below the corresponding image components of the primary map to allow further visual inspection and comparison with those of the primary map.

### 6.1 Orthogonal projections [i](#)

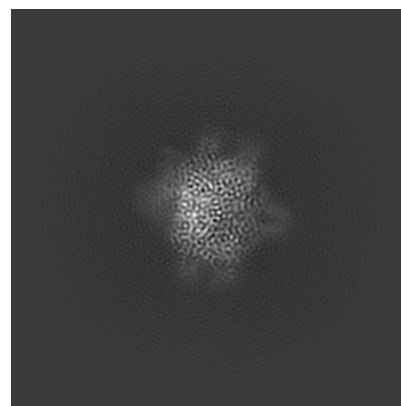
#### 6.1.1 Primary map



X

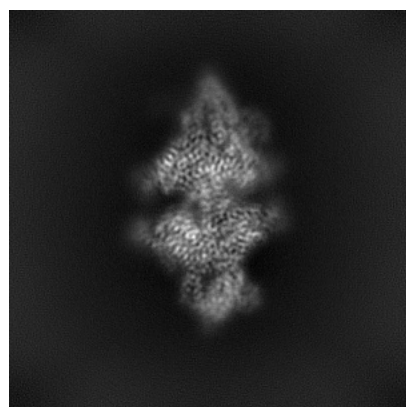


Y

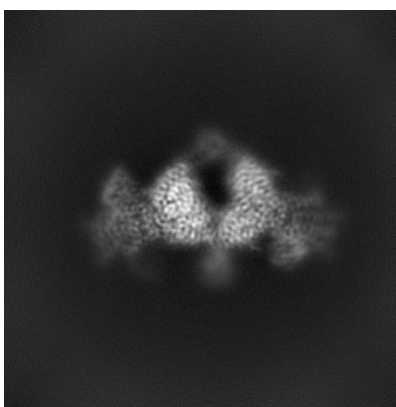


Z

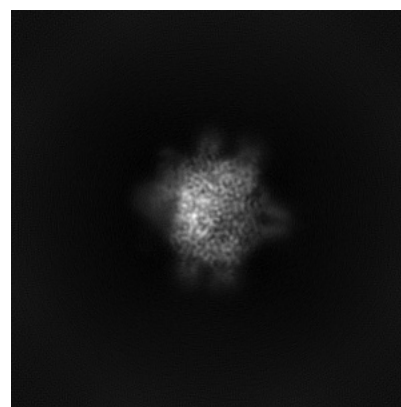
#### 6.1.2 Raw map



X



Y

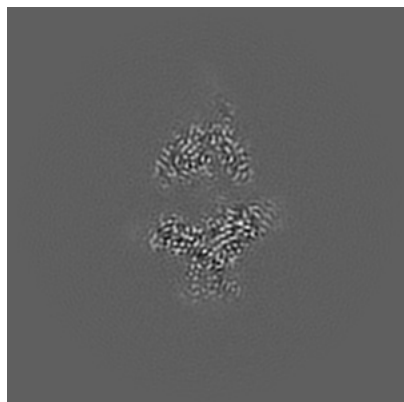


Z

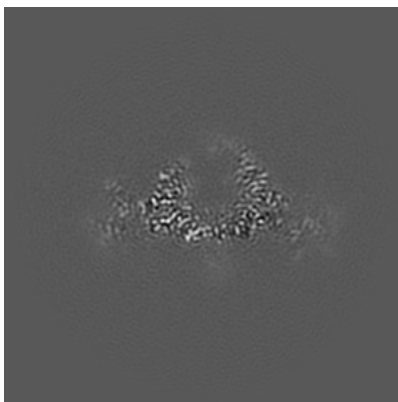
The images above show the map projected in three orthogonal directions.

## 6.2 Central slices [i](#)

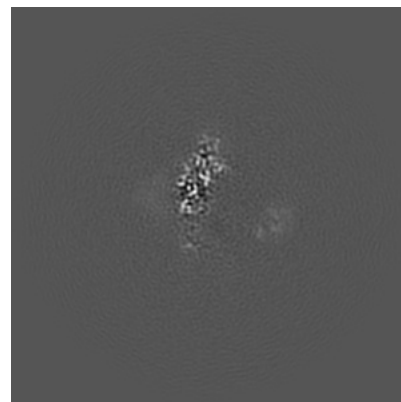
### 6.2.1 Primary map



X Index: 176

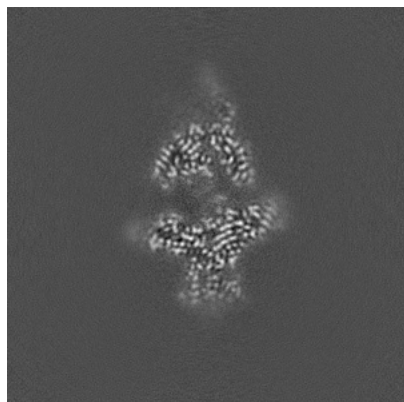


Y Index: 176

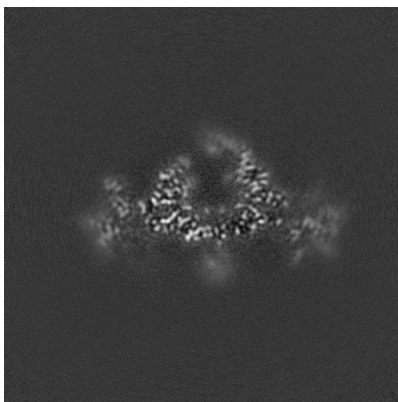


Z Index: 176

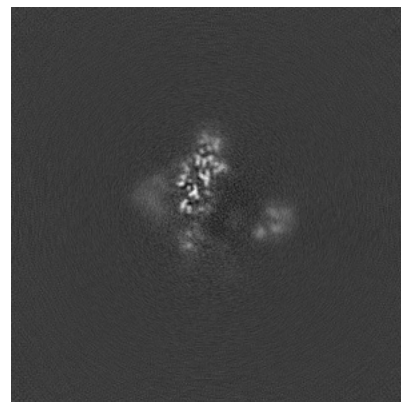
### 6.2.2 Raw map



X Index: 176



Y Index: 176



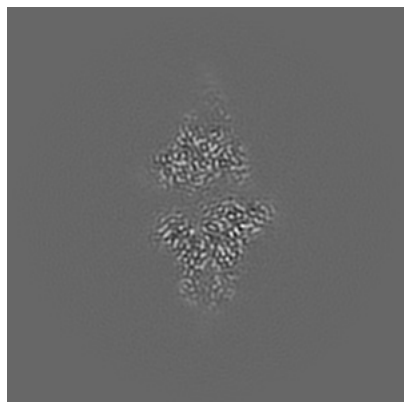
Z Index: 176

The images above show central slices of the map in three orthogonal directions.

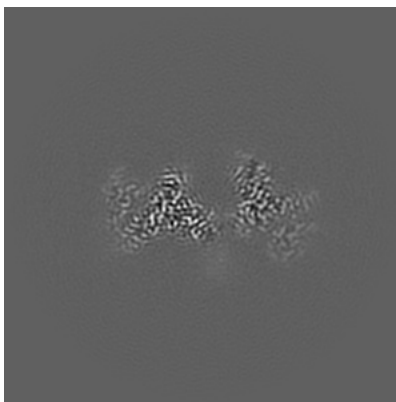


## 6.3 Largest variance slices [i](#)

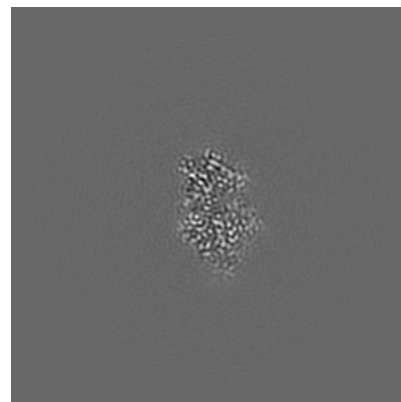
### 6.3.1 Primary map



X Index: 167

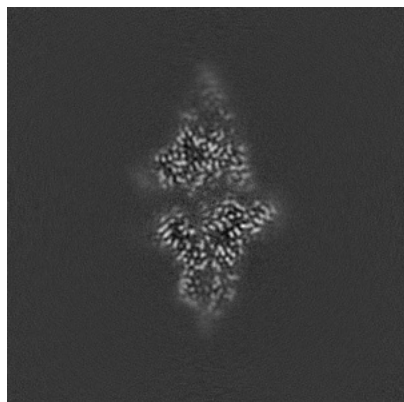


Y Index: 194

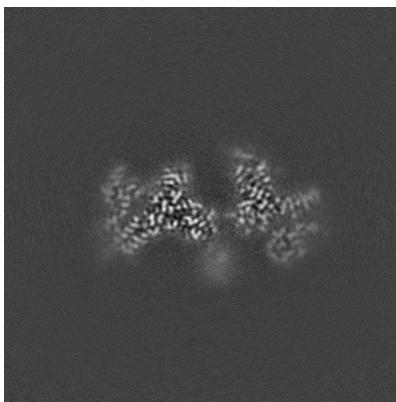


Z Index: 152

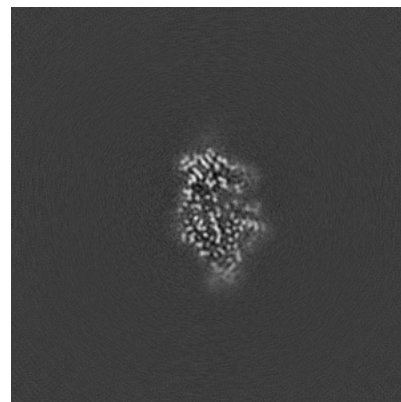
### 6.3.2 Raw map



X Index: 167



Y Index: 194

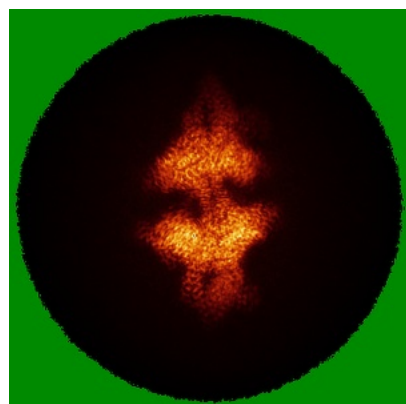


Z Index: 154

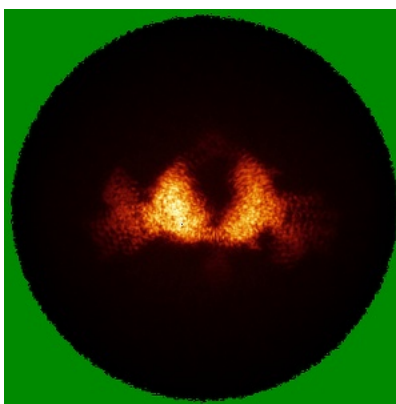
The images above show the largest variance slices of the map in three orthogonal directions.

## 6.4 Orthogonal standard-deviation projections (False-color) [i](#)

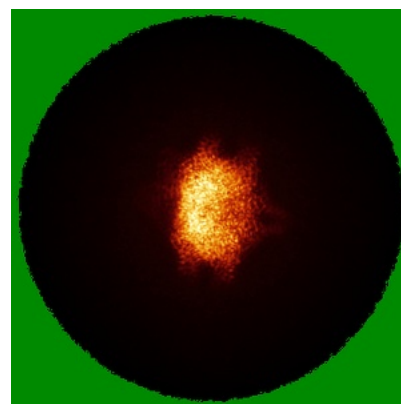
### 6.4.1 Primary map



X

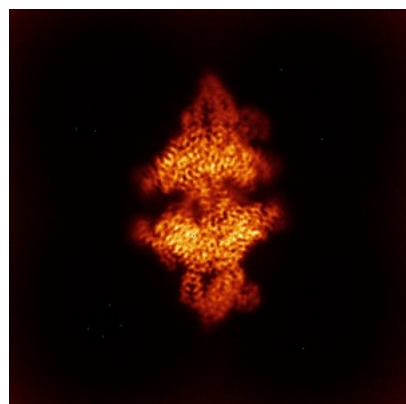


Y

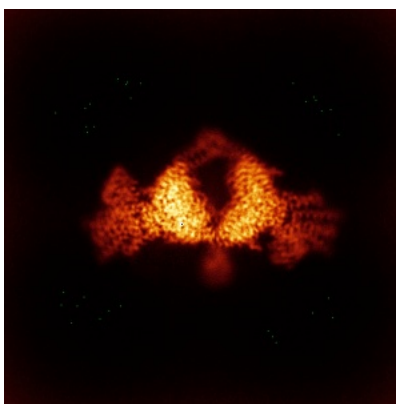


Z

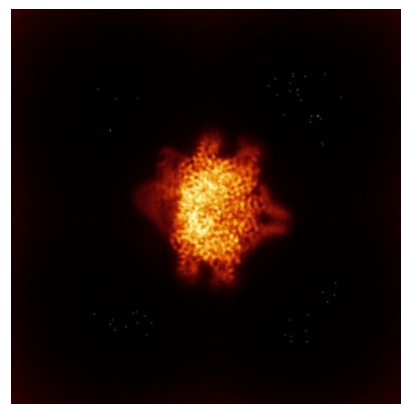
### 6.4.2 Raw map



X



Y

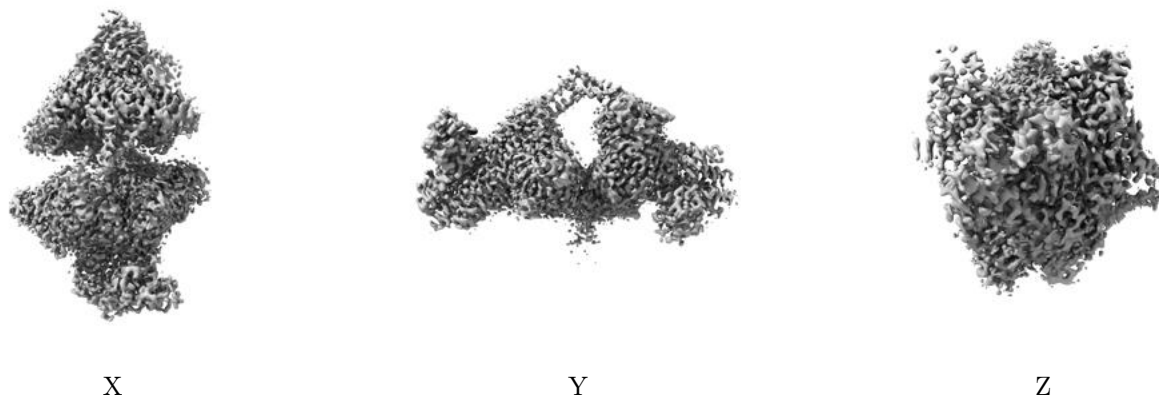


Z

The images above show the map standard deviation projections with false color in three orthogonal directions. Minimum values are shown in green, max in blue, and dark to light orange shades represent small to large values respectively.

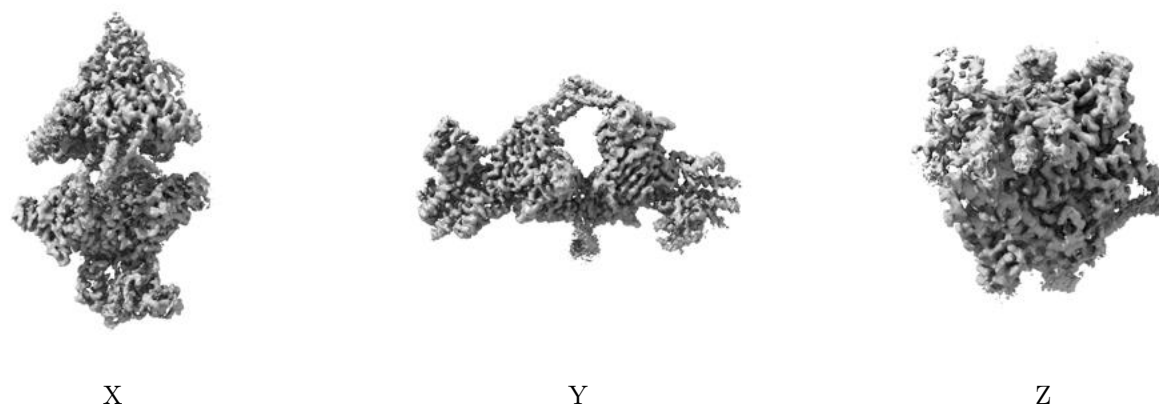
## 6.5 Orthogonal surface views [i](#)

### 6.5.1 Primary map



The images above show the 3D surface view of the map at the recommended contour level 0.117. These images, in conjunction with the slice images, may facilitate assessment of whether an appropriate contour level has been provided.

### 6.5.2 Raw map



These images show the 3D surface of the raw map. The raw map's contour level was selected so that its surface encloses the same volume as the primary map does at its recommended contour level.

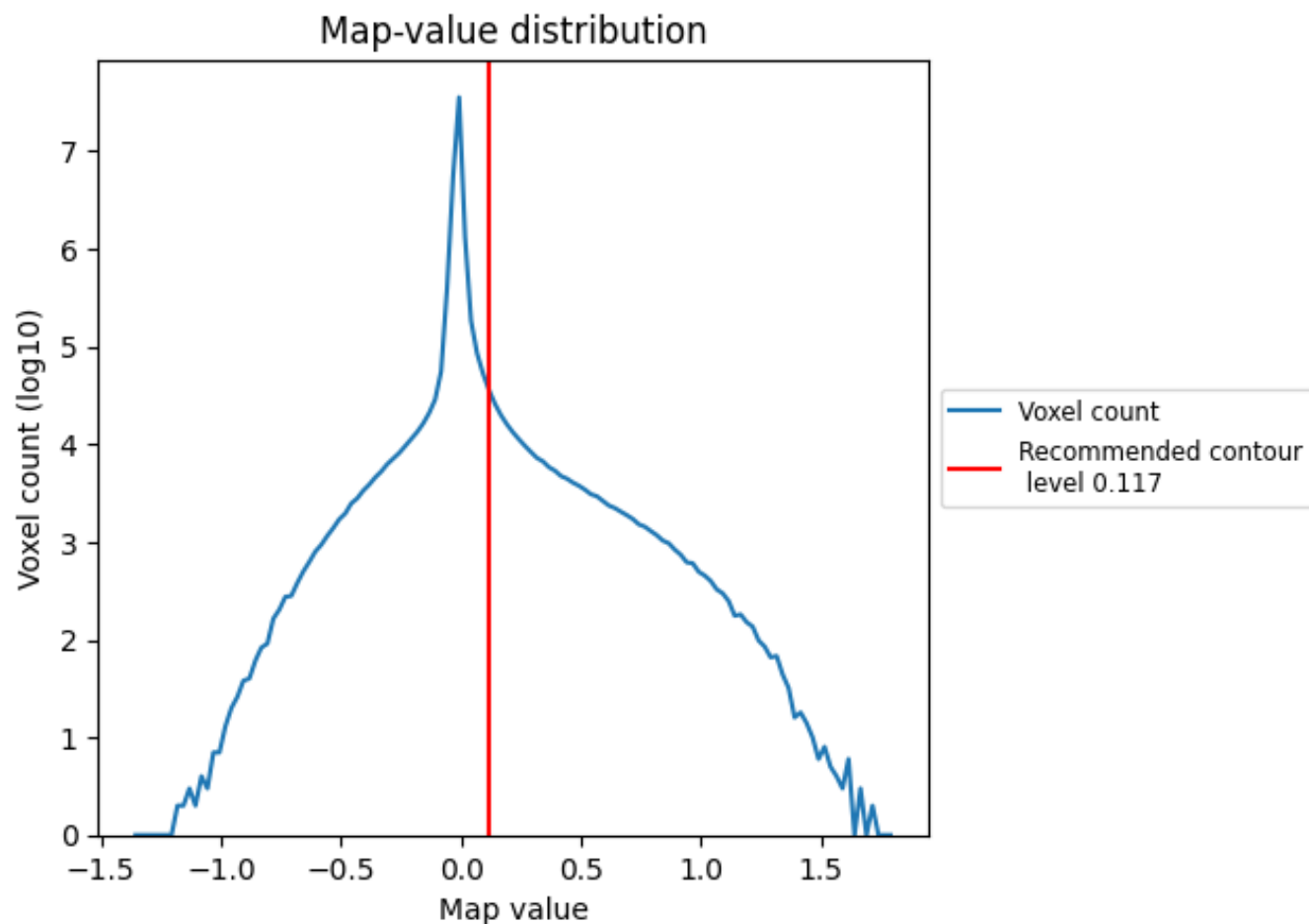
## 6.6 Mask visualisation [i](#)

This section was not generated. No masks/segmentation were deposited.

## 7 Map analysis [i](#)

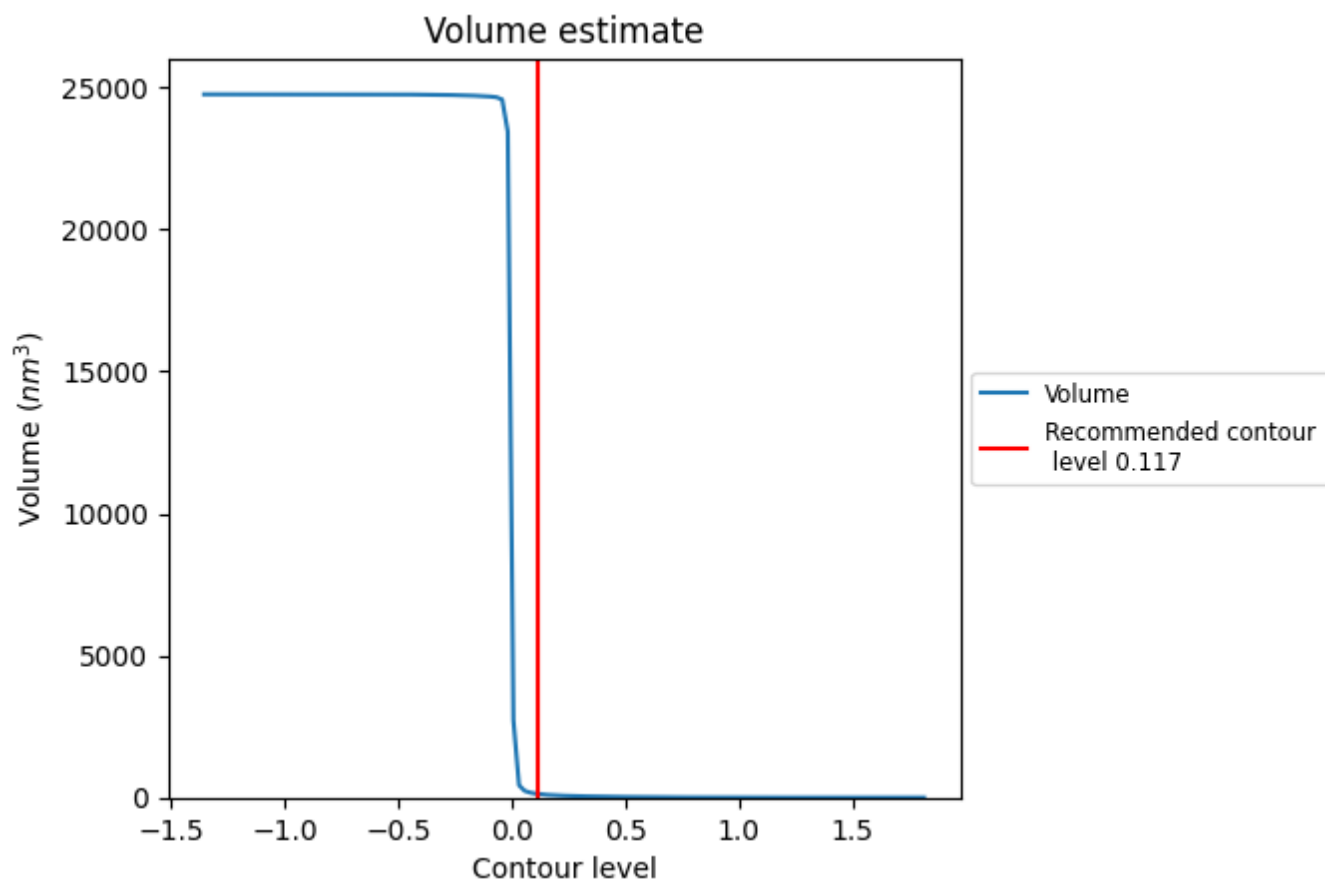
This section contains the results of statistical analysis of the map.

### 7.1 Map-value distribution [i](#)



The map-value distribution is plotted in 128 intervals along the x-axis. The y-axis is logarithmic. A spike in this graph at zero usually indicates that the volume has been masked.

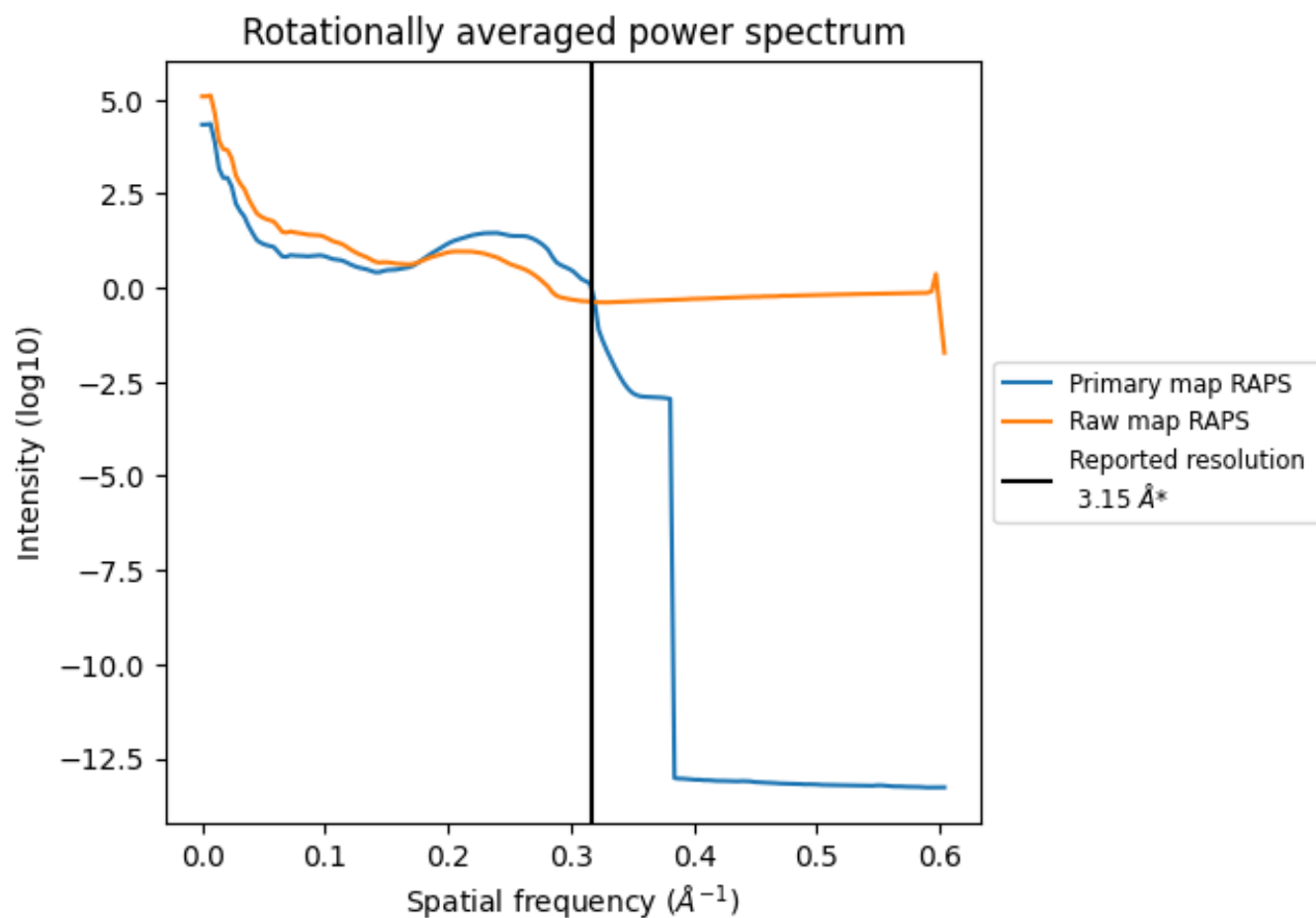
## 7.2 Volume estimate [i](#)



The volume at the recommended contour level is 125 nm<sup>3</sup>; this corresponds to an approximate mass of 113 kDa.

The volume estimate graph shows how the enclosed volume varies with the contour level. The recommended contour level is shown as a vertical line and the intersection between the line and the curve gives the volume of the enclosed surface at the given level.

### 7.3 Rotationally averaged power spectrum ⓘ

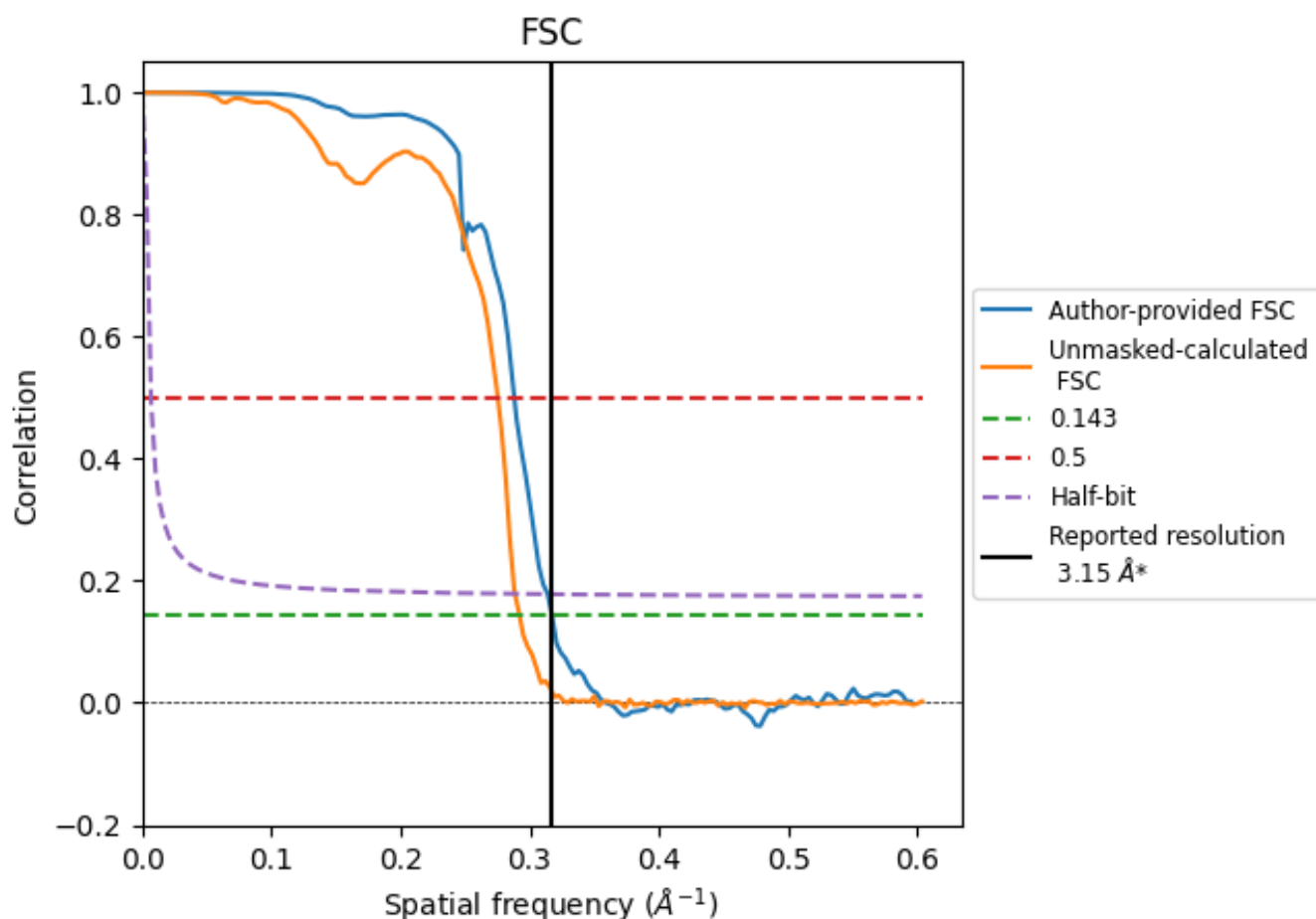


\*Reported resolution corresponds to spatial frequency of 0.317  $\text{\AA}^{-1}$

## 8 Fourier-Shell correlation [i](#)

Fourier-Shell Correlation (FSC) is the most commonly used method to estimate the resolution of single-particle and subtomogram-averaged maps. The shape of the curve depends on the imposed symmetry, mask and whether or not the two 3D reconstructions used were processed from a common reference. The reported resolution is shown as a black line. A curve is displayed for the half-bit criterion in addition to lines showing the 0.143 gold standard cut-off and 0.5 cut-off.

### 8.1 FSC [i](#)



\*Reported resolution corresponds to spatial frequency of  $0.317 \text{ \AA}^{-1}$

## 8.2 Resolution estimates [i](#)

Resolution estimate (Å)	Estimation criterion (FSC cut-off)		
	0.143	0.5	Half-bit
Reported by author	3.15	-	-
Author-provided FSC curve	3.15	3.47	3.18
Unmasked-calculated*	3.42	3.63	3.47

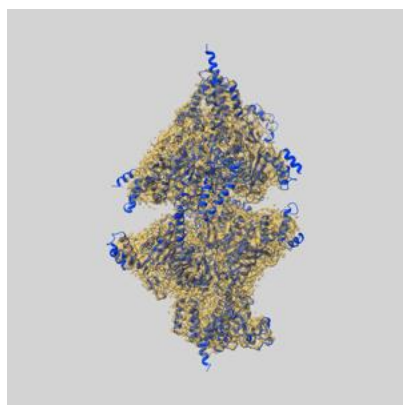
\*Resolution estimate based on FSC curve calculated by comparison of deposited half-maps.



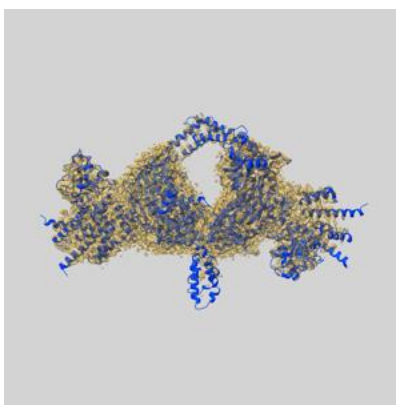
## 9 Map-model fit [i](#)

This section contains information regarding the fit between EMDB map EMD-49576 and PDB model 9NNK. Per-residue inclusion information can be found in section [3](#) on page [10](#).

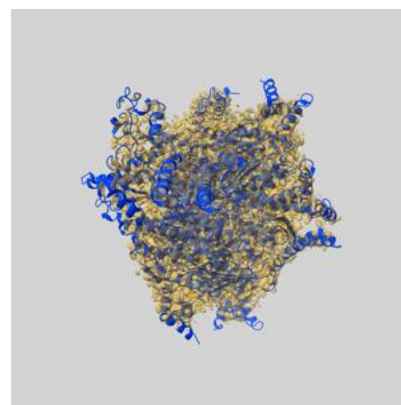
### 9.1 Map-model overlay [i](#)



X



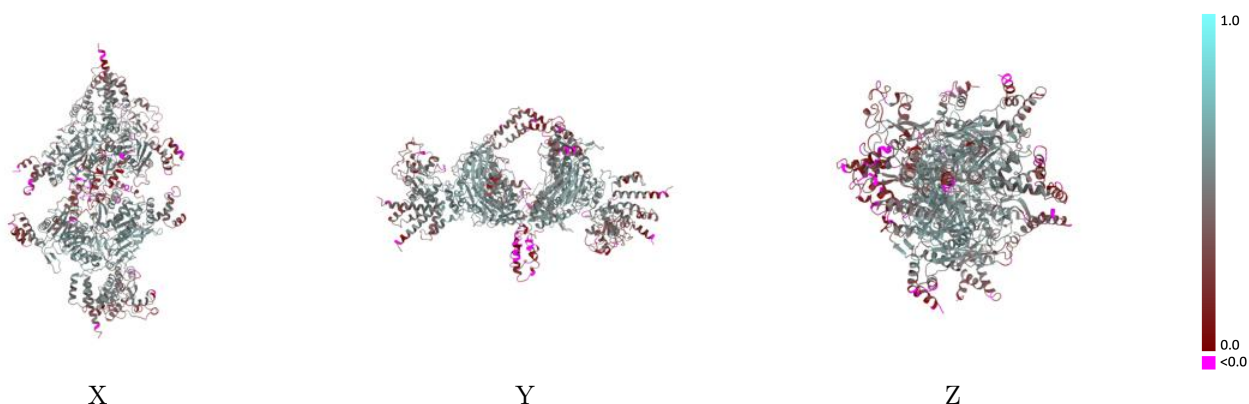
Y



Z

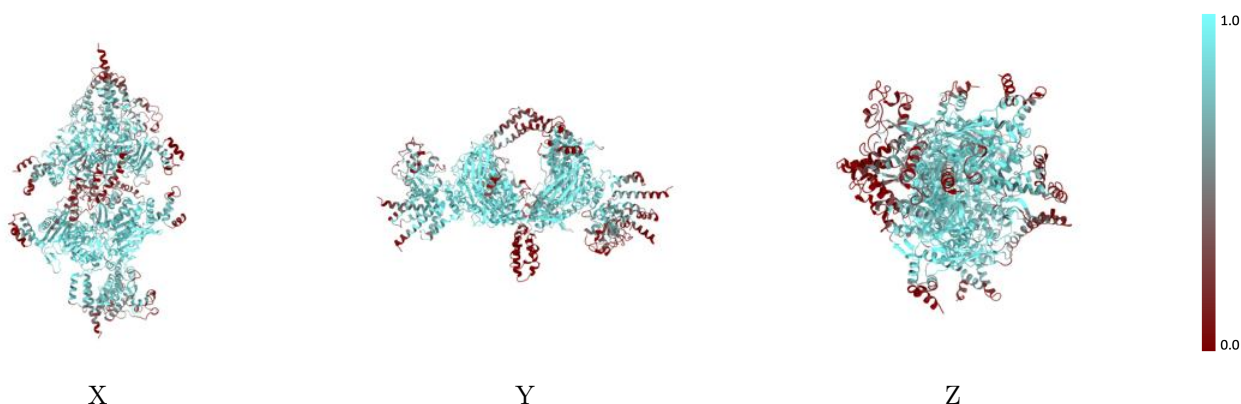
The images above show the 3D surface view of the map at the recommended contour level 0.117 at 50% transparency in yellow overlaid with a ribbon representation of the model coloured in blue. These images allow for the visual assessment of the quality of fit between the atomic model and the map.

## 9.2 Q-score mapped to coordinate model [i](#)



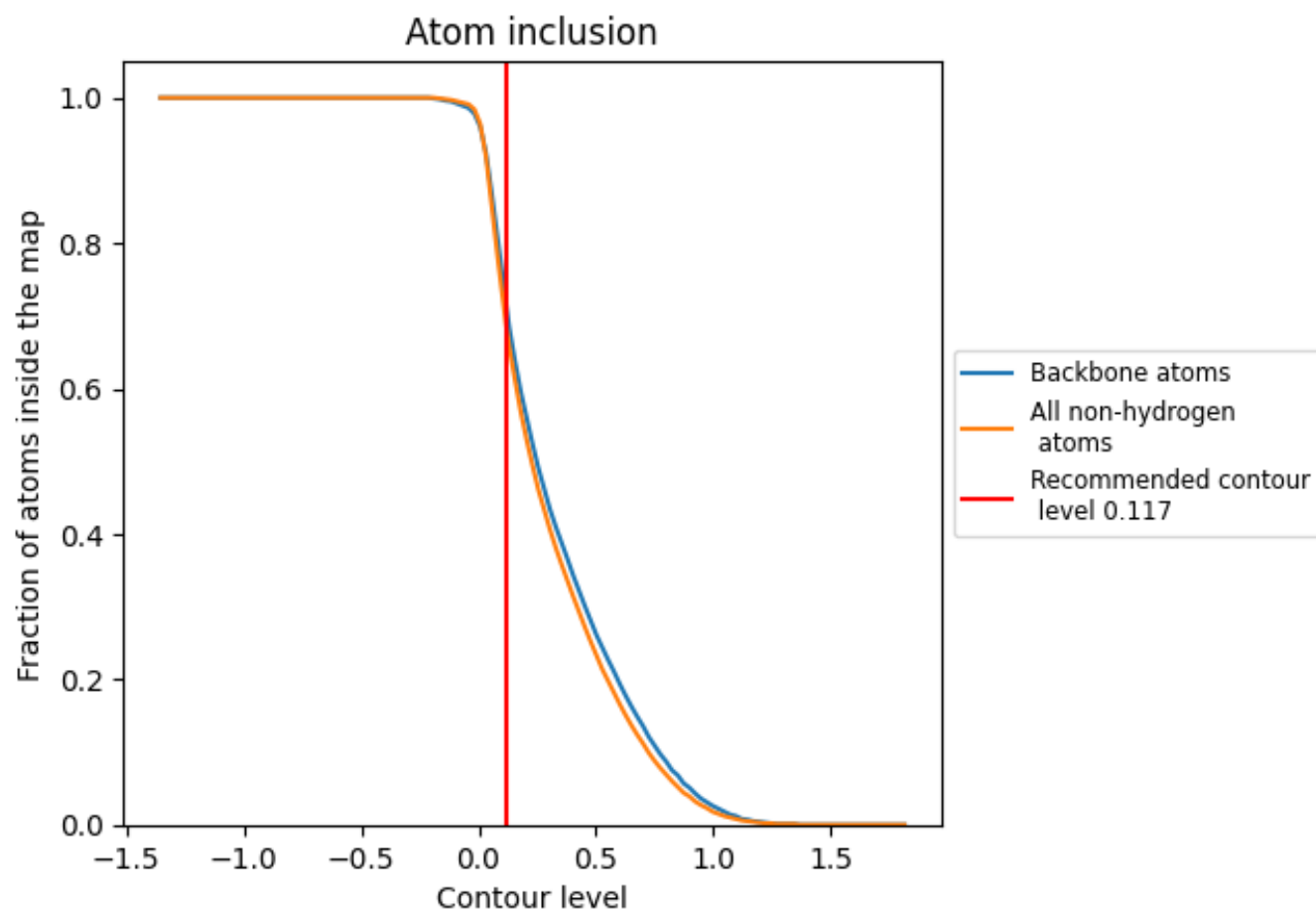
The images above show the model with each residue coloured according to its Q-score. This shows their resolvability in the map with higher Q-score values reflecting better resolvability. Please note: Q-score is calculating the resolvability of atoms, and thus high values are only expected at resolutions at which atoms can be resolved. Low Q-score values may therefore be expected for many entries.

## 9.3 Atom inclusion mapped to coordinate model [i](#)



The images above show the model with each residue coloured according to its atom inclusion. This shows to what extent they are inside the map at the recommended contour level (0.117).

## 9.4 Atom inclusion [i](#)



At the recommended contour level, 72% of all backbone atoms, 69% of all non-hydrogen atoms, are inside the map.

9.5 Map-model fit summary ⓘ

The table lists the average atom inclusion at the recommended contour level (0.117) and Q-score for the entire model and for each chain.

Chain	Atom inclusion	Q-score
All	<div></div> 0.6880	<div></div> 0.4430
C	<div></div> 0.7610	<div></div> 0.4750
D	<div></div> 0.7560	<div></div> 0.4730
E	<div></div> 0.6800	<div></div> 0.4350
F	<div></div> 0.6930	<div></div> 0.4350
J	<div></div> 0.6180	<div></div> 0.4050
K	<div></div> 0.3990	<div></div> 0.3660

