



Full wwPDB X-ray Structure Validation Report ⓘ

Nov 18, 2025 – 11:14 AM EST

PDB ID : 9MWU / pdb_00009mwu
Title : Structure of human endothelial nitric oxide synthase heme domain bound with N-(3-(((2-(3-(aminomethyl)-[1,1'-biphenyl]-4-yl)ethyl)amino)methyl)phenyl)furan-2-carboximidamide
Authors : Li, H.; Poulos, T.L.
Deposited on : 2025-01-17
Resolution : 1.74 Å(reported)

This is a Full wwPDB X-ray Structure Validation Report for a publicly released PDB entry.

We welcome your comments at validation@mail.wwpdb.org

A user guide is available at

<https://www.wwpdb.org/validation/2017/XrayValidationReportHelp>

with specific help available everywhere you see the ⓘ symbol.

The types of validation reports are described at

<http://www.wwpdb.org/validation/2017/FAQs#types>.

The following versions of software and data (see [references ⓘ](#)) were used in the production of this report:

MolProbity	:	4-5-2 with Phenix2.0
Mogul	:	2022.3.0, CSD as543be (2022)
Xtriage (Phenix)	:	2.0
EDS	:	3.0
buster-report	:	1.1.7 (2018)
Percentile statistics	:	20231227.v01 (using entries in the PDB archive December 27th 2023)
CCP4	:	9.0.010 (Gargrove)
Density-Fitness	:	1.0.12
Ideal geometry (proteins)	:	Engh & Huber (2001)
Ideal geometry (DNA, RNA)	:	Parkinson et al. (1996)
Validation Pipeline (wwPDB-VP)	:	2.46

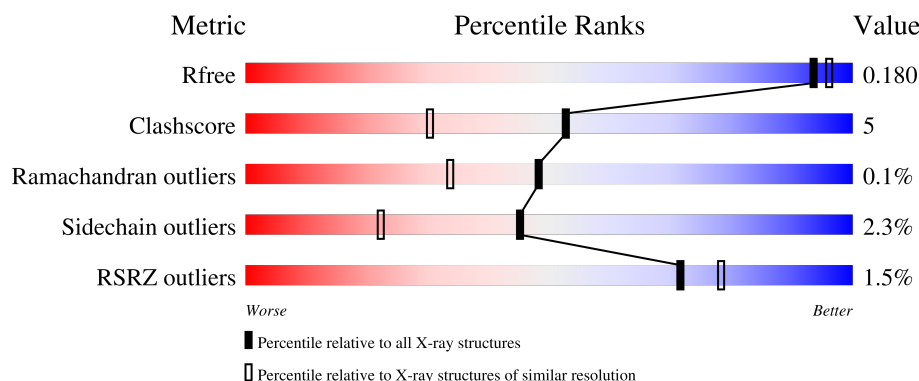
1 Overall quality at a glance

The following experimental techniques were used to determine the structure:

X-RAY DIFFRACTION

The reported resolution of this entry is 1.74 Å.

Percentile scores (ranging between 0-100) for global validation metrics of the entry are shown in the following graphic. The table shows the number of entries on which the scores are based.



Metric	Whole archive (#Entries)	Similar resolution (#Entries, resolution range(Å))
R_{free}	164625	1043 (1.74-1.74)
Clashscore	180529	1119 (1.74-1.74)
Ramachandran outliers	177936	1112 (1.74-1.74)
Sidechain outliers	177891	1112 (1.74-1.74)
RSRZ outliers	164620	1043 (1.74-1.74)

The table below summarises the geometric issues observed across the polymeric chains and their fit to the electron density. The red, orange, yellow and green segments of the lower bar indicate the fraction of residues that contain outliers for ≥ 3 , 2, 1 and 0 types of geometric quality criteria respectively. A grey segment represents the fraction of residues that are not modelled. The numeric value for each fraction is indicated below the corresponding segment, with a dot representing fractions $\leq 5\%$. The upper red bar (where present) indicates the fraction of residues that have poor fit to the electron density. The numeric value is given above the bar.

Mol	Chain	Length	Quality of chain
1	A	441	<div> <div style="width: 100%; height: 10px; background: linear-gradient(to right, red, orange, yellow, green, grey);"></div> <div style="display: flex; justify-content: space-between; padding: 0 5px;"> % 82% 8% • 9% </div> </div>
1	B	441	<div> <div style="width: 100%; height: 10px; background: linear-gradient(to right, red, orange, yellow, green, grey);"></div> <div style="display: flex; justify-content: space-between; padding: 0 5px;"> % 81% 10% • 8% </div> </div>

2 Entry composition [i](#)

There are 11 unique types of molecules in this entry. The entry contains 7646 atoms, of which 0 are hydrogens and 0 are deuteriums.

In the tables below, the ZeroOcc column contains the number of atoms modelled with zero occupancy, the AltConf column contains the number of residues with at least one atom in alternate conformation and the Trace column contains the number of residues modelled with at most 2 atoms.

- Molecule 1 is a protein called Nitric oxide synthase 3.

Mol	Chain	Residues	Atoms					ZeroOcc	AltConf	Trace
1	A	402	Total	C	N	O	S	0	2	0
			3214	2048	565	585	16			
1	B	405	Total	C	N	O	S	0	6	0
			3262	2077	574	594	17			

There are 2 discrepancies between the modelled and reference sequences:

Chain	Residue	Modelled	Actual	Comment	Reference
A	298	GLU	ASP	variant	UNP P29474
B	298	GLU	ASP	variant	UNP P29474

- Molecule 2 is PROTOPORPHYRIN IX CONTAINING FE (CCD ID: HEM) (formula: $C_{34}H_{32}FeN_4O_4$).



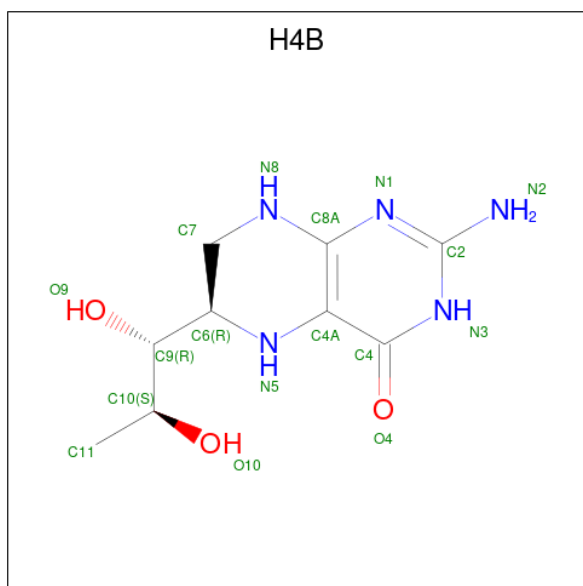
Mol	Chain	Residues	Atoms					ZeroOcc	AltConf
2	A	1	Total	C	Fe	N	O	0	0
			43	34	1	4	4		

Continued on next page...

Continued from previous page...

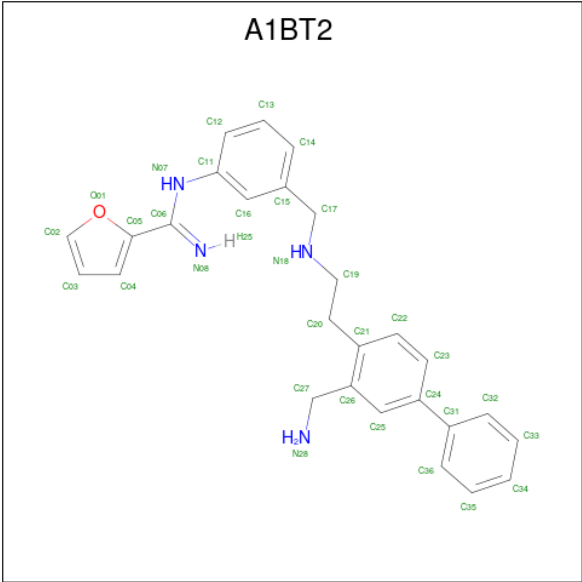
Mol	Chain	Residues	Atoms					ZeroOcc	AltConf
2	B	1	Total	C	Fe	N	O	0	0
			43	34	1	4	4		

- Molecule 3 is 5,6,7,8-TETRAHYDROBIOPTERIN (CCD ID: H4B) (formula: $C_9H_{15}N_5O_3$).



Mol	Chain	Residues	Atoms				ZeroOcc	AltConf
3	A	1	Total	C	N	O	0	0
			17	9	5	3		
3	B	1	Total	C	N	O	0	0
			17	9	5	3		

- Molecule 4 is N-{3-[(2-[3-(aminomethyl)[1,1'-biphenyl]-4-yl]ethyl)amino)methyl]phenyl}furan-2-carboximidamide (CCD ID: A1BT2) (formula: $C_{27}H_{28}N_4O$) (labeled as "Ligand of Interest" by depositor).



Mol	Chain	Residues	Atoms				ZeroOcc	AltConf
4	A	1	Total	C	N	O	0	0
			32	27	4	1		
4	B	1	Total	C	N	O	0	0
			32	27	4	1		

- Molecule 5 is ACETATE ION (CCD ID: ACT) (formula: C₂H₃O₂).



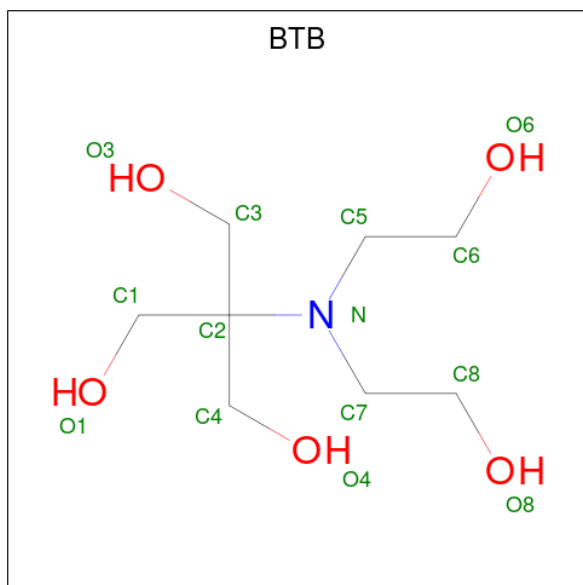
Mol	Chain	Residues	Atoms			ZeroOcc	AltConf
5	A	1	Total	C	O	0	0
			4	2	2		
5	A	1	Total	C	O	0	0
			4	2	2		

Continued on next page...

Continued from previous page...

Mol	Chain	Residues	Atoms			ZeroOcc	AltConf
5	B	1	Total	C	O	0	0
			4	2	2		

- Molecule 6 is 2-[BIS-(2-HYDROXY-ETHYL)-AMINO]-2-HYDROXYMETHYL-PROPAN E-1,3-DIOL (CCD ID: BTB) (formula: $C_8H_{19}NO_5$).



Mol	Chain	Residues	Atoms				ZeroOcc	AltConf
6	A	1	Total	C	N	O	0	0
			14	8	1	5		
6	A	1	Total	C	N	O	0	0
			14	8	1	5		
6	A	1	Total	C	N	O	0	0
			14	8	1	5		
6	B	1	Total	C	N	O	0	0
			14	8	1	5		
6	B	1	Total	C	N	O	0	0
			14	8	1	5		

- Molecule 7 is GLYCEROL (CCD ID: GOL) (formula: $C_3H_8O_3$).



Mol	Chain	Residues	Atoms			ZeroOcc	AltConf
7	A	1	Total	C	O	0	0
			6	3	3		
7	B	1	Total	C	O	0	0
			6	3	3		
7	B	1	Total	C	O	0	0
			6	3	3		

- Molecule 8 is CHLORIDE ION (CCD ID: CL) (formula: Cl).

Mol	Chain	Residues	Atoms		ZeroOcc	AltConf
8	A	1	Total	Cl	0	0
			1	1		
8	B	1	Total	Cl	0	0
			1	1		

- Molecule 9 is GADOLINIUM ATOM (CCD ID: GD) (formula: Gd).

Mol	Chain	Residues	Atoms		ZeroOcc	AltConf
9	A	1	Total	Gd	0	0
			1	1		
9	B	1	Total	Gd	0	0
			1	1		

- Molecule 10 is ZINC ION (CCD ID: ZN) (formula: Zn).

Mol	Chain	Residues	Atoms		ZeroOcc	AltConf
10	A	1	Total 1	Zn 1	0	0

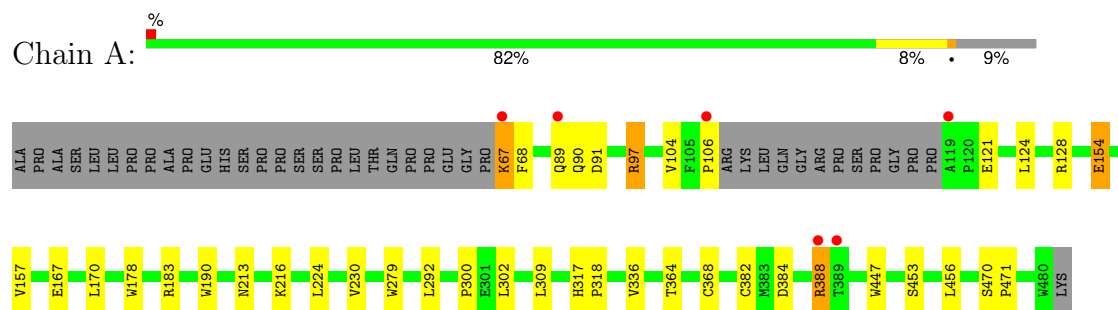
- Molecule 11 is water.

Mol	Chain	Residues	Atoms		ZeroOcc	AltConf
11	A	416	Total 416	O 416	0	0
11	B	465	Total 465	O 465	0	0

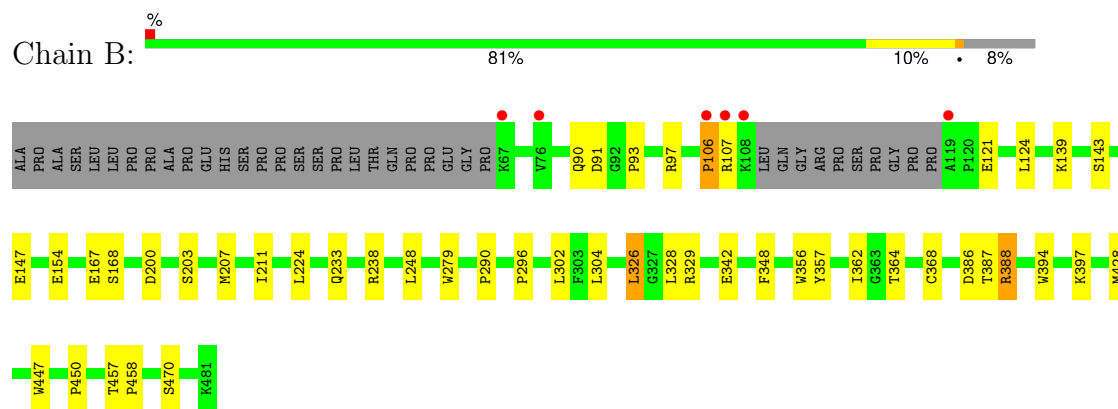
3 Residue-property plots [i](#)

These plots are drawn for all protein, RNA, DNA and oligosaccharide chains in the entry. The first graphic for a chain summarises the proportions of the various outlier classes displayed in the second graphic. The second graphic shows the sequence view annotated by issues in geometry and electron density. Residues are color-coded according to the number of geometric quality criteria for which they contain at least one outlier: green = 0, yellow = 1, orange = 2 and red = 3 or more. A red dot above a residue indicates a poor fit to the electron density ($RSRZ > 2$). Stretches of 2 or more consecutive residues without any outlier are shown as a green connector. Residues present in the sample, but not in the model, are shown in grey.

• Molecule 1: Nitric oxide synthase 3



• Molecule 1: Nitric oxide synthase 3



4 Data and refinement statistics

Property	Value	Source
Space group	P 21 21 21	Depositor
Cell constants a, b, c, α , β , γ	61.66Å 109.32Å 152.12Å 90.00° 90.00° 90.00°	Depositor
Resolution (Å)	47.90 – 1.74 47.90 – 1.74	Depositor EDS
% Data completeness (in resolution range)	96.2 (47.90-1.74) 96.1 (47.90-1.74)	Depositor EDS
R_{merge}	0.10	Depositor
R_{sym}	(Not available)	Depositor
$\langle I/\sigma(I) \rangle$ ¹	1.11 (at 1.74Å)	Xtriage
Refinement program	PHENIX (1.11.1 _2575: ???)	Depositor
R, R_{free}	0.156 , 0.182 0.155 , 0.180	Depositor DCC
R_{free} test set	5147 reflections (4.35%)	wwPDB-VP
Wilson B-factor (Å ²)	23.5	Xtriage
Anisotropy	0.274	Xtriage
Bulk solvent k_{sol} (e/Å ³), B_{sol} (Å ²)	0.37 , 44.2	EDS
L-test for twinning ²	$\langle L \rangle = 0.50$, $\langle L^2 \rangle = 0.33$	Xtriage
Estimated twinning fraction	No twinning to report.	Xtriage
F_o, F_c correlation	0.97	EDS
Total number of atoms	7646	wwPDB-VP
Average B, all atoms (Å ²)	31.0	wwPDB-VP

Xtriage's analysis on translational NCS is as follows: *The largest off-origin peak in the Patterson function is 4.00% of the height of the origin peak. No significant pseudotranslation is detected.*

¹Intensities estimated from amplitudes.

²Theoretical values of $\langle |L| \rangle$, $\langle L^2 \rangle$ for acentric reflections are 0.5, 0.333 respectively for untwinned datasets, and 0.375, 0.2 for perfectly twinned datasets.

5 Model quality [i](#)

5.1 Standard geometry [i](#)

Bond lengths and bond angles in the following residue types are not validated in this section: CL, H4B, GD, HEM, A1BT2, GOL, ZN, ACT, BTB

The Z score for a bond length (or angle) is the number of standard deviations the observed value is removed from the expected value. A bond length (or angle) with $|Z| > 5$ is considered an outlier worth inspection. RMSZ is the root-mean-square of all Z scores of the bond lengths (or angles).

Mol	Chain	Bond lengths		Bond angles	
		RMSZ	$\# Z > 5$	RMSZ	$\# Z > 5$
1	A	0.26	0/3312	0.50	0/4514
1	B	0.28	0/3369	0.51	0/4587
All	All	0.27	0/6681	0.50	0/9101

Chiral center outliers are detected by calculating the chiral volume of a chiral center and verifying if the center is modelled as a planar moiety or with the opposite hand. A planarity outlier is detected by checking planarity of atoms in a peptide group, atoms in a mainchain group or atoms of a sidechain that are expected to be planar.

Mol	Chain	#Chirality outliers	#Planarity outliers
1	A	0	1

There are no bond length outliers.

There are no bond angle outliers.

There are no chirality outliers.

All (1) planarity outliers are listed below:

Mol	Chain	Res	Type	Group
1	A	388	ARG	Peptide

5.2 Too-close contacts [i](#)

In the following table, the Non-H and H(model) columns list the number of non-hydrogen atoms and hydrogen atoms in the chain respectively. The H(added) column lists the number of hydrogen atoms added and optimized by MolProbity. The Clashes column lists the number of clashes within the asymmetric unit, whereas Symm-Clashes lists symmetry-related clashes.

Mol	Chain	Non-H	H(model)	H(added)	Clashes	Symm-Clashes
1	A	3214	0	3121	30	0
1	B	3262	0	3181	27	0
2	A	43	0	30	3	0
2	B	43	0	30	2	0
3	A	17	0	15	1	0
3	B	17	0	15	1	0
4	A	32	0	0	1	0
4	B	32	0	0	0	0
5	A	8	0	6	1	0
5	B	4	0	3	0	0
6	A	42	0	56	10	0
6	B	28	0	34	2	0
7	A	6	0	8	0	0
7	B	12	0	16	0	0
8	A	1	0	0	0	0
8	B	1	0	0	0	0
9	A	1	0	0	0	0
9	B	1	0	0	0	0
10	A	1	0	0	0	0
11	A	416	0	0	5	0
11	B	465	0	0	2	0
All	All	7646	0	6515	65	0

The all-atom clashscore is defined as the number of clashes found per 1000 atoms (including hydrogen atoms). The all-atom clashscore for this structure is 5.

All (65) close contacts within the same asymmetric unit are listed below, sorted by their clash magnitude.

Atom-1	Atom-2	Interatomic distance (Å)	Clash overlap (Å)
6:A:508:BTB:O1	6:A:508:BTB:O4	2.05	0.69
1:A:167:GLU:OE2	11:A:602:HOH:O	2.13	0.67
1:A:279:TRP:HB2	1:A:302:LEU:HD21	1.76	0.66
2:A:501:HEM:HBB2	2:A:501:HEM:HHC	1.78	0.65
2:B:501:HEM:HBC2	2:B:501:HEM:HMC2	1.80	0.64
2:A:501:HEM:HMC2	2:A:501:HEM:HBC2	1.80	0.63
1:B:124:LEU:HD21	1:B:154:GLU:HA	1.82	0.61
1:A:67:LYS:HD2	1:A:68:PHE:H	1.65	0.60
6:B:506:BTB:O8	6:B:506:BTB:O4	2.18	0.59
2:B:501:HEM:HHC	2:B:501:HEM:HBB2	1.84	0.59
1:B:290:PRO:HB3	1:B:304:LEU:HD23	1.84	0.58
1:A:97:ARG:NH1	1:B:91:ASP:OD1	2.37	0.57
1:A:67:LYS:NZ	11:A:610:HOH:O	2.38	0.56

Continued on next page...

Continued from previous page...

Atom-1	Atom-2	Interatomic distance (Å)	Clash overlap (Å)
1:B:200:ASP:OD2	11:B:601:HOH:O	2.18	0.55
1:B:326:LEU:HB3	1:B:328:LEU:HG	1.92	0.52
1:B:397:LYS:NZ	11:B:606:HOH:O	2.36	0.51
1:B:364:THR:O	1:B:368:CYS:HB2	2.10	0.51
1:A:167:GLU:CD	6:A:508:BTB:H11	2.36	0.50
1:B:447:TRP:HA	3:B:502:H4B:N1	2.27	0.50
1:A:128:ARG:NH2	1:A:154:GLU:OE1	2.38	0.49
1:A:317:HIS:CG	1:A:318:PRO:HD2	2.48	0.49
1:B:121:GLU:H	1:B:121:GLU:CD	2.21	0.49
1:A:364:THR:O	1:A:368:CYS:HB2	2.12	0.49
1:B:279:TRP:HB2	1:B:302:LEU:HD21	1.95	0.49
1:A:167:GLU:OE2	6:A:508:BTB:H11	2.12	0.48
2:A:501:HEM:HMB3	5:A:504:ACT:H2	1.95	0.48
1:A:124:LEU:HG	1:A:157:VAL:HG11	1.96	0.48
1:B:224:LEU:HD12	1:B:356:TRP:HB3	1.96	0.47
1:B:93:PRO:HG3	1:B:106:PRO:HB3	1.96	0.47
6:A:507:BTB:H12	6:A:507:BTB:H51	1.47	0.47
1:A:213:ASN:ND2	11:A:608:HOH:O	2.38	0.46
1:A:447:TRP:HA	3:A:502:H4B:N1	2.30	0.46
6:B:506:BTB:H51	6:B:506:BTB:H32	1.49	0.45
1:A:382:CYS:O	6:A:506:BTB:H52	2.16	0.45
1:A:104:VAL:O	1:A:106:PRO:HD3	2.17	0.45
1:B:143:SER:O	1:B:147:GLU:HG2	2.17	0.45
11:A:928:HOH:O	1:B:97:ARG:HG3	2.16	0.44
6:A:506:BTB:O8	6:A:506:BTB:H41	2.18	0.43
1:A:178:TRP:CE3	1:A:190:TRP:HA	2.54	0.43
1:A:384:ASP:OD2	6:A:506:BTB:O3	2.35	0.43
6:A:508:BTB:H72	6:A:508:BTB:H42	1.57	0.43
1:B:238:ARG:HD3	1:B:296:PRO:HG2	2.01	0.43
1:A:382:CYS:HA	6:A:506:BTB:C1	2.48	0.43
1:B:342[A]:GLU:OE1	1:B:470:SER:OG	2.29	0.42
1:A:128:ARG:HD3	11:A:907:HOH:O	2.19	0.42
1:A:216:LYS:HB2	1:A:216:LYS:HE2	1.75	0.42
1:B:387:THR:HA	1:B:394:TRP:CD1	2.54	0.42
1:B:450:PRO:HG2	1:B:457:THR:HG21	2.02	0.42
1:A:382:CYS:HA	6:A:506:BTB:H12	2.02	0.42
1:B:386:ASP:OD1	1:B:388:ARG:HD3	2.20	0.41
1:A:89:GLN:O	1:B:97:ARG:NH1	2.52	0.41
1:A:183:ARG:HD3	1:A:447:TRP:CD2	2.56	0.41
1:A:470:SER:HA	1:A:471:PRO:C	2.45	0.41
1:B:203:SER:O	1:B:207:MET:HG3	2.19	0.41

Continued on next page...

Continued from previous page...

Atom-1	Atom-2	Interatomic distance (Å)	Clash overlap (Å)
1:A:453:SER:HB3	1:A:456:LEU:HD12	2.02	0.41
1:A:91:ASP:OD1	1:B:97:ARG:NH1	2.54	0.41
1:A:336:VAL:HG21	4:A:503:A1BT2:C14	2.51	0.41
1:A:97:ARG:HA	1:A:97:ARG:HD2	1.62	0.41
1:B:238:ARG:HD3	1:B:296:PRO:CG	2.51	0.41
1:A:170:LEU:HD11	1:A:230:VAL:HG11	2.03	0.41
1:B:357:TYR:CD2	1:B:362:ILE:HD11	2.56	0.41
1:B:428:MET:HG3	1:B:458:PRO:HB2	2.02	0.40
1:A:292:LEU:HD22	1:A:300:PRO:HB2	2.02	0.40
1:B:211:ILE:HG23	1:B:248:LEU:HD13	2.04	0.40
1:B:233:GLN:HB3	1:B:348:PHE:CE2	2.56	0.40

There are no symmetry-related clashes.

5.3 Torsion angles [i](#)

5.3.1 Protein backbone [i](#)

In the following table, the Percentiles column shows the percent Ramachandran outliers of the chain as a percentile score with respect to all X-ray entries followed by that with respect to entries of similar resolution.

The Analysed column shows the number of residues for which the backbone conformation was analysed, and the total number of residues.

Mol	Chain	Analysed	Favoured	Allowed	Outliers	Percentiles	
1	A	400/441 (91%)	393 (98%)	7 (2%)	0	100	100
1	B	407/441 (92%)	401 (98%)	5 (1%)	1 (0%)	44	29
All	All	807/882 (92%)	794 (98%)	12 (2%)	1 (0%)	48	34

All (1) Ramachandran outliers are listed below:

Mol	Chain	Res	Type
1	B	106	PRO

5.3.2 Protein sidechains [i](#)

In the following table, the Percentiles column shows the percent sidechain outliers of the chain as a percentile score with respect to all X-ray entries followed by that with respect to entries of similar resolution.

The Analysed column shows the number of residues for which the sidechain conformation was analysed, and the total number of residues.

Mol	Chain	Analysed	Rotameric	Outliers	Percentiles	
1	A	343/374 (92%)	335 (98%)	8 (2%)	45	22
1	B	350/374 (94%)	341 (97%)	9 (3%)	41	18
All	All	693/748 (93%)	676 (98%)	17 (2%)	45	19

All (17) residues with a non-rotameric sidechain are listed below:

Mol	Chain	Res	Type
1	A	67	LYS
1	A	90	GLN
1	A	97	ARG
1	A	121	GLU
1	A	154	GLU
1	A	224	LEU
1	A	309	LEU
1	A	388	ARG
1	B	90	GLN
1	B	107	ARG
1	B	139	LYS
1	B	167	GLU
1	B	168[A]	SER
1	B	168[B]	SER
1	B	326	LEU
1	B	329	ARG
1	B	388	ARG

Sometimes sidechains can be flipped to improve hydrogen bonding and reduce clashes. All (2) such sidechains are listed below:

Mol	Chain	Res	Type
1	A	87	GLN
1	B	194	GLN

5.3.3 RNA ⓘ

There are no RNA molecules in this entry.

5.4 Non-standard residues in protein, DNA, RNA chains [i](#)

There are no non-standard protein/DNA/RNA residues in this entry.

5.5 Carbohydrates [i](#)

There are no oligosaccharides in this entry.

5.6 Ligand geometry [i](#)

Of 22 ligands modelled in this entry, 5 are monoatomic - leaving 17 for Mogul analysis.

In the following table, the Counts columns list the number of bonds (or angles) for which Mogul statistics could be retrieved, the number of bonds (or angles) that are observed in the model and the number of bonds (or angles) that are defined in the Chemical Component Dictionary. The Link column lists molecule types, if any, to which the group is linked. The Z score for a bond length (or angle) is the number of standard deviations the observed value is removed from the expected value. A bond length (or angle) with $|Z| > 2$ is considered an outlier worth inspection. RMSZ is the root-mean-square of all Z scores of the bond lengths (or angles).

Mol	Type	Chain	Res	Link	Bond lengths			Bond angles		
					Counts	RMSZ	$\# Z > 2$	Counts	RMSZ	$\# Z > 2$
5	ACT	A	505	-	3,3,3	0.77	0	3,3,3	0.75	0
6	BTB	A	506	9	13,13,13	0.38	0	7,16,16	0.92	1 (14%)
6	BTB	B	506	-	13,13,13	0.47	0	7,16,16	1.63	1 (14%)
4	A1BT2	A	503	-	31,35,35	0.83	2 (6%)	36,46,46	0.93	1 (2%)
7	GOL	A	509	-	5,5,5	0.35	0	5,5,5	0.76	0
3	H4B	B	502	-	16,18,18	0.79	0	14,26,26	2.57	7 (50%)
7	GOL	B	507	-	5,5,5	0.36	0	5,5,5	0.83	0
5	ACT	B	504	-	3,3,3	0.77	0	3,3,3	0.84	0
6	BTB	A	507	-	13,13,13	0.45	0	7,16,16	0.57	0
4	A1BT2	B	503	-	31,35,35	0.81	3 (9%)	36,46,46	0.77	0
6	BTB	A	508	-	13,13,13	0.58	0	7,16,16	1.07	1 (14%)
3	H4B	A	502	-	16,18,18	0.91	1 (6%)	14,26,26	2.47	5 (35%)
2	HEM	B	501	1	42,50,50	1.60	7 (16%)	46,82,82	1.51	7 (15%)
2	HEM	A	501	1	42,50,50	1.41	5 (11%)	46,82,82	1.41	3 (6%)
7	GOL	B	508	-	5,5,5	0.39	0	5,5,5	0.34	0
6	BTB	B	505	9	13,13,13	0.43	0	7,16,16	0.52	0
5	ACT	A	504	-	3,3,3	0.80	0	3,3,3	0.77	0

In the following table, the Chirals column lists the number of chiral outliers, the number of chiral centers analysed, the number of these observed in the model and the number defined in the

Chemical Component Dictionary. Similar counts are reported in the Torsion and Rings columns.
'-' means no outliers of that kind were identified.

Mol	Type	Chain	Res	Link	Chirals	Torsions	Rings
6	BTB	A	506	9	-	9/21/21/21	-
6	BTB	B	506	-	-	10/21/21/21	-
4	A1BT2	A	503	-	-	1/17/21/21	0/4/4/4
7	GOL	A	509	-	-	2/4/4/4	-
3	H4B	B	502	-	-	0/8/17/17	0/2/2/2
7	GOL	B	507	-	-	2/4/4/4	-
6	BTB	A	507	-	-	9/21/21/21	-
4	A1BT2	B	503	-	-	1/17/21/21	0/4/4/4
6	BTB	A	508	-	-	8/21/21/21	-
3	H4B	A	502	-	-	0/8/17/17	0/2/2/2
2	HEM	B	501	1	-	0/12/54/54	-
2	HEM	A	501	1	-	1/12/54/54	-
7	GOL	B	508	-	-	0/4/4/4	-
6	BTB	B	505	9	-	0/21/21/21	-

All (18) bond length outliers are listed below:

Mol	Chain	Res	Type	Atoms	Z	Observed(Å)	Ideal(Å)
2	B	501	HEM	C3C-C2C	-4.65	1.34	1.40
2	A	501	HEM	C3C-C2C	-3.60	1.35	1.40
2	B	501	HEM	C3C-CAC	3.36	1.55	1.47
2	B	501	HEM	CAB-C3B	3.17	1.55	1.47
2	A	501	HEM	C3C-CAC	3.10	1.54	1.47
2	A	501	HEM	CAB-C3B	3.08	1.55	1.47
2	B	501	HEM	C3C-C4C	3.00	1.45	1.41
4	A	503	A1BT2	C06-N07	-2.80	1.33	1.38
4	B	503	A1BT2	C04-C05	-2.45	1.35	1.38
4	A	503	A1BT2	C11-N07	-2.44	1.36	1.41
4	B	503	A1BT2	C06-N07	-2.39	1.34	1.38
2	B	501	HEM	FE-NB	2.29	2.10	1.98
2	A	501	HEM	C3C-C4C	2.26	1.44	1.41
2	B	501	HEM	CMD-C2D	2.23	1.55	1.50
3	A	502	H4B	C7-C6	2.13	1.54	1.52
2	A	501	HEM	CMB-C2B	2.09	1.55	1.50
2	B	501	HEM	CMB-C2B	2.07	1.55	1.50
4	B	503	A1BT2	C11-N07	-2.06	1.37	1.41

All (26) bond angle outliers are listed below:

Mol	Chain	Res	Type	Atoms	Z	Observed(°)	Ideal(°)
3	B	502	H4B	C8A-C4A-C4	5.50	119.51	114.50
3	A	502	H4B	C8A-C4A-C4	5.22	119.25	114.50
2	A	501	HEM	CBA-CAA-C2A	-4.47	105.02	112.54
3	B	502	H4B	C2-N3-C4	4.31	121.95	115.96
3	A	502	H4B	C2-N3-C4	4.06	121.61	115.96
2	B	501	HEM	CMA-C3A-C4A	-3.80	122.88	128.46
2	A	501	HEM	C4B-CHC-C1C	3.74	127.50	122.56
2	B	501	HEM	CBA-CAA-C2A	-3.62	106.45	112.54
3	B	502	H4B	N1-C2-N3	-3.55	120.04	125.48
3	A	502	H4B	N1-C2-N3	-3.45	120.19	125.48
6	B	506	BTB	O4-C4-C2	-3.43	103.33	111.40
2	B	501	HEM	C4B-CHC-C1C	3.25	126.85	122.56
2	B	501	HEM	C3B-C4B-NB	-2.74	107.50	109.47
2	B	501	HEM	C3B-C2B-C1B	2.58	108.35	106.41
3	A	502	H4B	C2-N1-C8A	2.40	120.30	114.59
3	B	502	H4B	O10-C10-C9	-2.38	105.84	109.77
6	A	508	BTB	O3-C3-C2	-2.32	105.95	111.40
3	B	502	H4B	C2-N1-C8A	2.31	120.08	114.59
2	B	501	HEM	C1B-NB-C4B	2.27	107.90	105.21
4	A	503	A1BT2	C19-C20-C21	-2.26	108.09	112.85
3	B	502	H4B	C4A-C4-N3	-2.22	118.30	123.91
3	B	502	H4B	N2-C2-N3	2.17	120.48	117.22
2	A	501	HEM	C3B-C2B-C1B	2.17	108.04	106.41
6	A	506	BTB	O3-C3-C2	2.17	116.50	111.40
3	A	502	H4B	C11-C10-C9	-2.12	109.52	112.11
2	B	501	HEM	CMA-C3A-C2A	2.06	128.83	124.94

There are no chirality outliers.

All (43) torsion outliers are listed below:

Mol	Chain	Res	Type	Atoms
4	A	503	A1BT2	C21-C26-C27-N28
4	B	503	A1BT2	C21-C26-C27-N28
6	A	506	BTB	O1-C1-C2-C3
6	A	506	BTB	O1-C1-C2-C4
6	A	506	BTB	O1-C1-C2-N
6	A	506	BTB	C1-C2-C4-O4
6	A	506	BTB	C3-C2-C4-O4
6	A	506	BTB	N-C2-C4-O4
6	A	507	BTB	C1-C2-C4-O4
6	A	507	BTB	C3-C2-C4-O4
6	A	507	BTB	N-C2-C4-O4
6	A	507	BTB	C1-C2-N-C5

Continued on next page...

Continued from previous page...

Mol	Chain	Res	Type	Atoms
6	A	507	BTB	C1-C2-N-C7
6	A	507	BTB	C3-C2-N-C5
6	A	507	BTB	C3-C2-N-C7
6	A	507	BTB	C4-C2-N-C7
6	A	508	BTB	O1-C1-C2-C3
6	A	508	BTB	O1-C1-C2-C4
6	A	508	BTB	O1-C1-C2-N
6	A	508	BTB	C1-C2-C4-O4
6	A	508	BTB	C3-C2-C4-O4
6	A	508	BTB	N-C2-C4-O4
6	B	506	BTB	C1-C2-C4-O4
6	B	506	BTB	C3-C2-C4-O4
6	B	506	BTB	N-C2-C4-O4
7	A	509	GOL	O1-C1-C2-C3
7	B	507	GOL	C1-C2-C3-O3
7	B	507	GOL	O2-C2-C3-O3
6	B	506	BTB	N-C7-C8-O8
6	A	506	BTB	N-C7-C8-O8
6	B	506	BTB	N-C5-C6-O6
2	A	501	HEM	C4B-C3B-CAB-CBB
7	A	509	GOL	O1-C1-C2-O2
6	A	508	BTB	N-C7-C8-O8
6	A	506	BTB	C3-C2-N-C5
6	A	507	BTB	C4-C2-N-C5
6	B	506	BTB	C1-C2-N-C5
6	B	506	BTB	C1-C2-N-C7
6	B	506	BTB	C3-C2-N-C5
6	B	506	BTB	C4-C2-N-C5
6	B	506	BTB	C4-C2-N-C7
6	A	508	BTB	C4-C2-C3-O3
6	A	506	BTB	C1-C2-N-C5

There are no ring outliers.

10 monomers are involved in 20 short contacts:

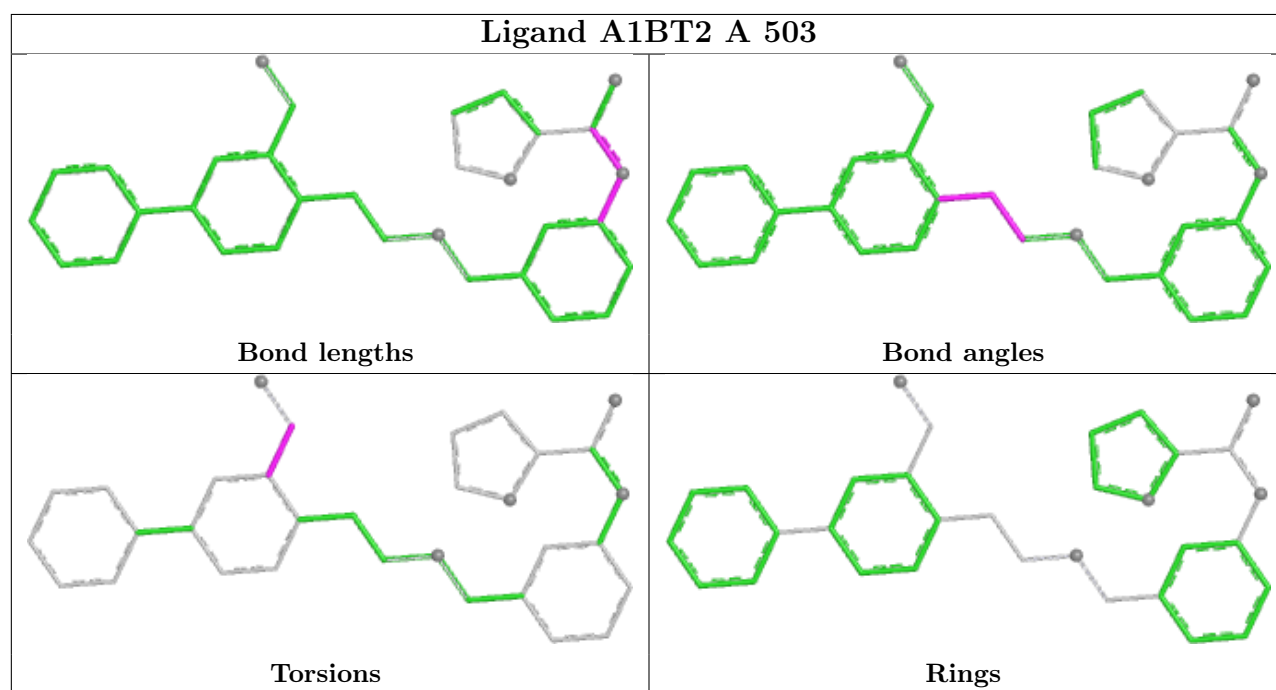
Mol	Chain	Res	Type	Clashes	Symm-Clashes
6	A	506	BTB	5	0
6	B	506	BTB	2	0
4	A	503	A1BT2	1	0
3	B	502	H4B	1	0
6	A	507	BTB	1	0
6	A	508	BTB	4	0

Continued on next page...

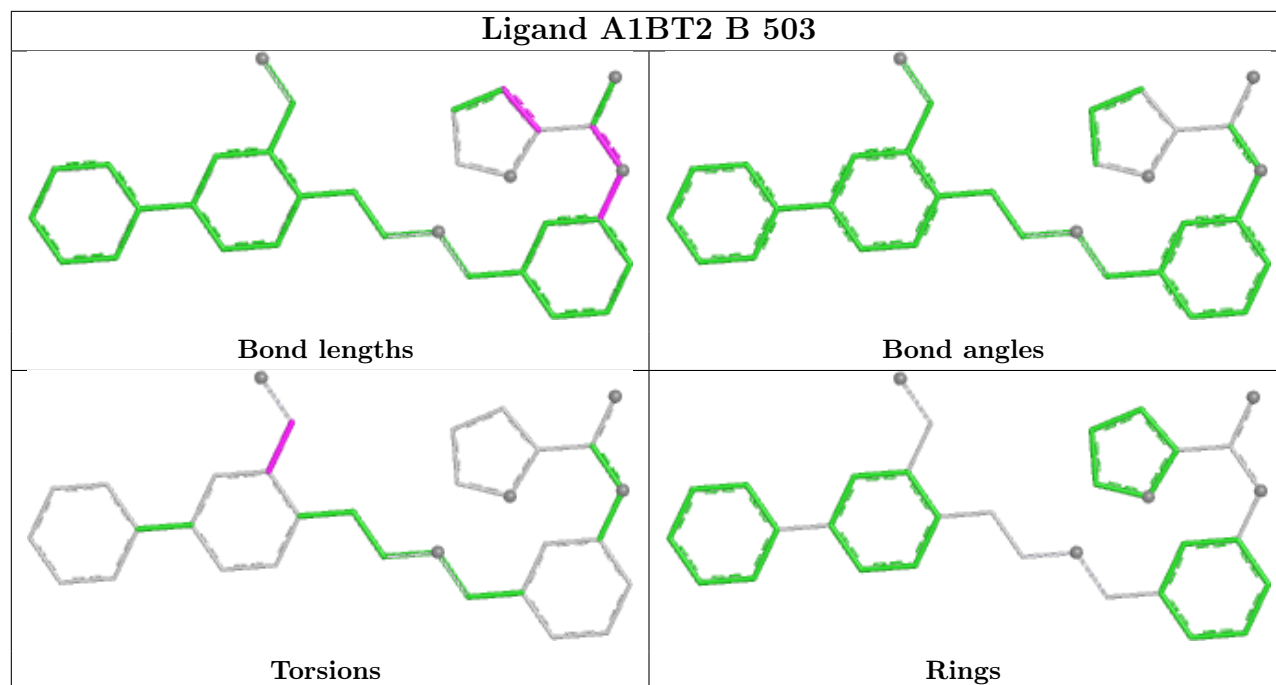
Continued from previous page...

Mol	Chain	Res	Type	Clashes	Symm-Clashes
3	A	502	H4B	1	0
2	B	501	HEM	2	0
2	A	501	HEM	3	0
5	A	504	ACT	1	0

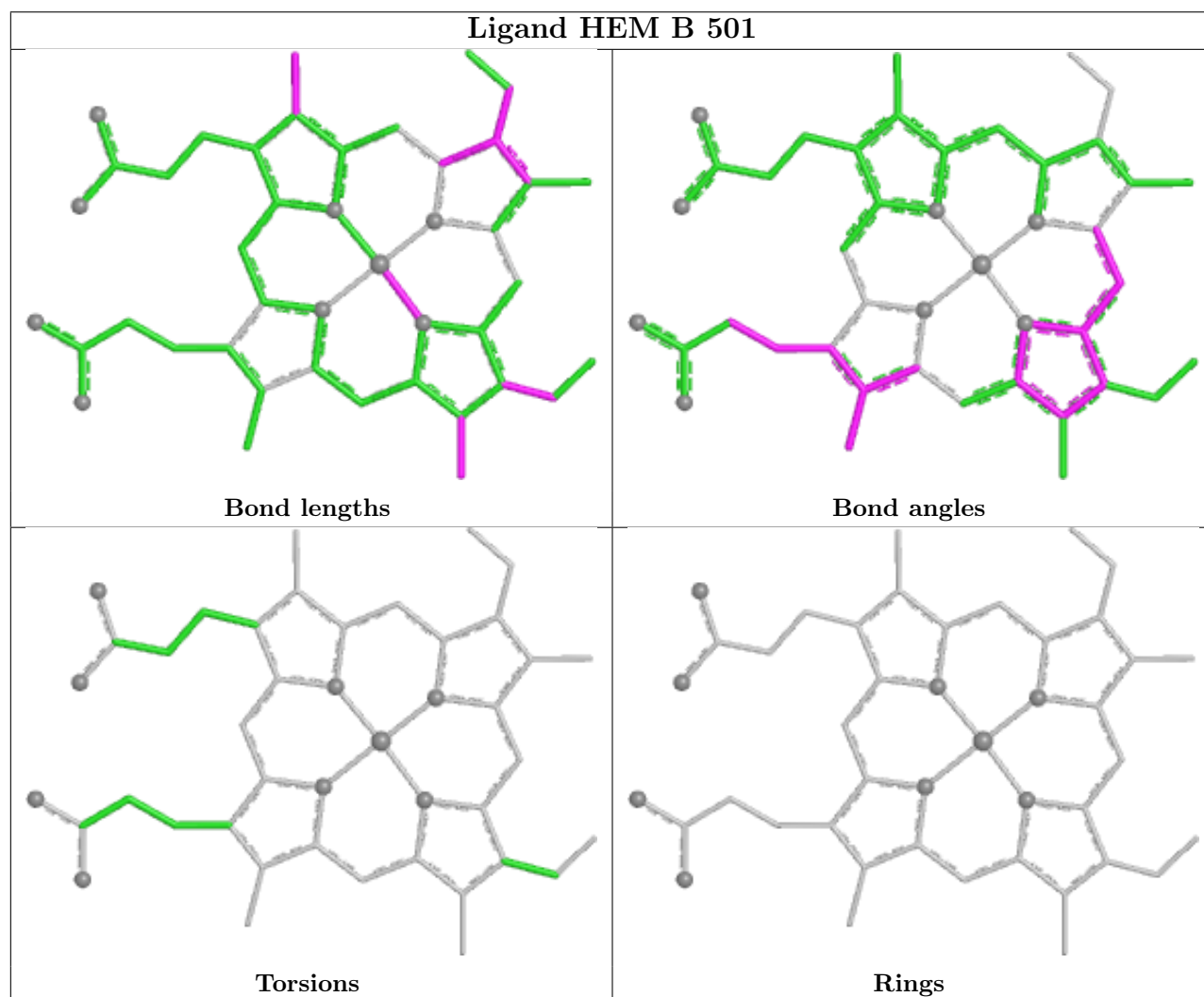
The following is a two-dimensional graphical depiction of Mogul quality analysis of bond lengths, bond angles, torsion angles, and ring geometry for all instances of the Ligand of Interest. In addition, ligands with molecular weight > 250 and outliers as shown on the validation Tables will also be included. For torsion angles, if less than 5% of the Mogul distribution of torsion angles is within 10 degrees of the torsion angle in question, then that torsion angle is considered an outlier. Any bond that is central to one or more torsion angles identified as an outlier by Mogul will be highlighted in the graph. For rings, the root-mean-square deviation (RMSD) between the ring in question and similar rings identified by Mogul is calculated over all ring torsion angles. If the average RMSD is greater than 60 degrees and the minimal RMSD between the ring in question and any Mogul-identified rings is also greater than 60 degrees, then that ring is considered an outlier. The outliers are highlighted in purple. The color gray indicates Mogul did not find sufficient equivalents in the CSD to analyse the geometry.

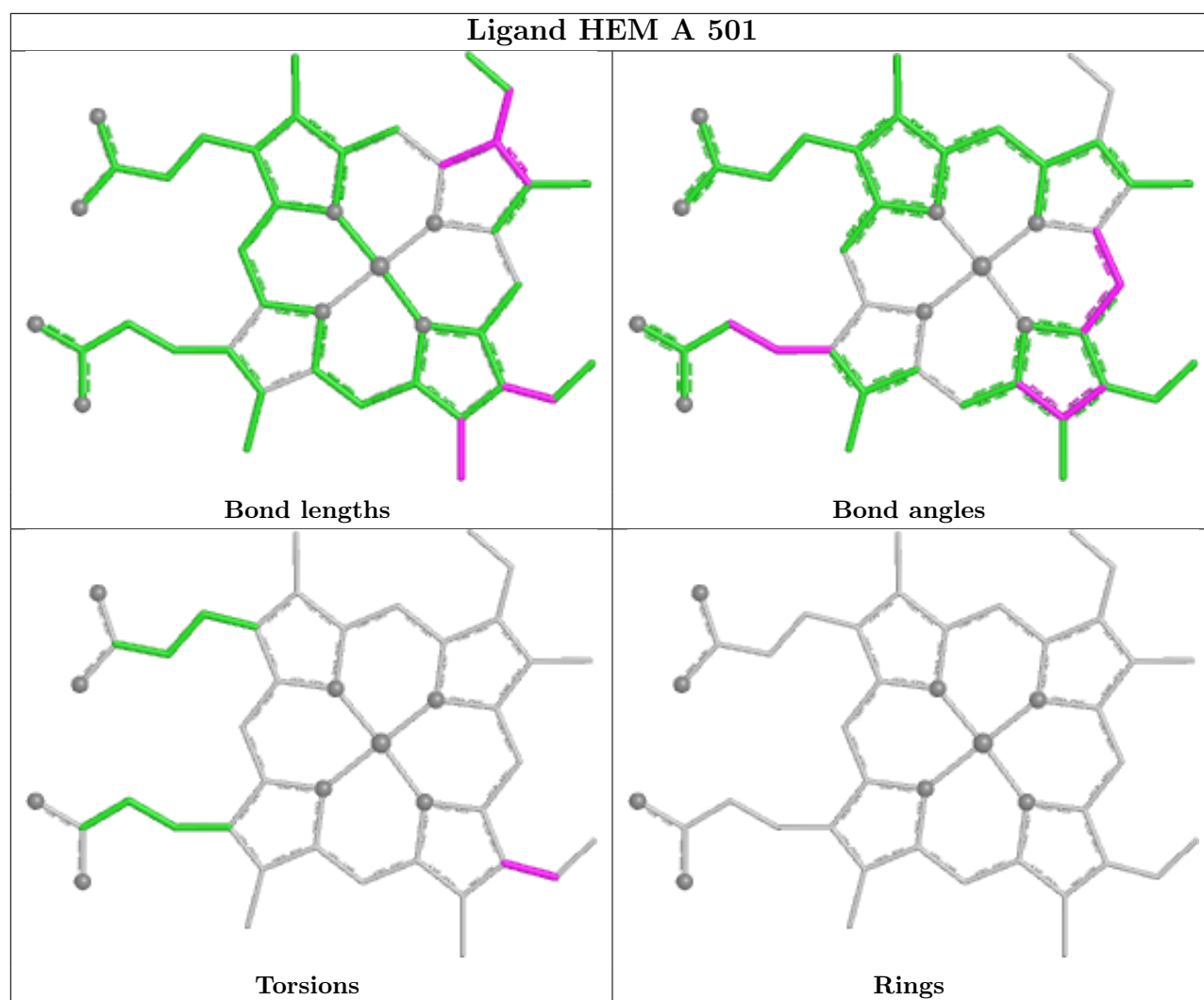


Ligand A1BT2 B 503



Ligand HEM B 501





5.7 Other polymers [i](#)

There are no such residues in this entry.

5.8 Polymer linkage issues [i](#)

There are no chain breaks in this entry.

6 Fit of model and data [i](#)

6.1 Protein, DNA and RNA chains [i](#)

In the following table, the column labelled ‘#RSRZ> 2’ contains the number (and percentage) of RSRZ outliers, followed by percent RSRZ outliers for the chain as percentile scores relative to all X-ray entries and entries of similar resolution. The OWAB column contains the minimum, median, 95th percentile and maximum values of the occupancy-weighted average B-factor per residue. The column labelled ‘Q< 0.9’ lists the number of (and percentage) of residues with an average occupancy less than 0.9.

Mol	Chain	Analysed	<RSRZ>	#RSRZ>2	OWAB(Å ²)	Q<0.9
1	A	402/441 (91%)	-0.24	6 (1%) 71 78	14, 27, 52, 89	2 (0%)
1	B	405/441 (91%)	-0.31	6 (1%) 71 78	13, 25, 50, 86	6 (1%)
All	All	807/882 (91%)	-0.28	12 (1%) 71 78	13, 26, 52, 89	8 (0%)

All (12) RSRZ outliers are listed below:

Mol	Chain	Res	Type	RSRZ
1	A	106	PRO	7.0
1	B	106	PRO	4.6
1	B	119	ALA	4.5
1	A	119	ALA	3.8
1	A	89	GLN	3.4
1	B	107	ARG	3.0
1	B	108	LYS	2.9
1	A	388	ARG	2.7
1	B	67	LYS	2.7
1	A	67	LYS	2.4
1	A	389	THR	2.1
1	B	76	VAL	2.1

6.2 Non-standard residues in protein, DNA, RNA chains [i](#)

There are no non-standard protein/DNA/RNA residues in this entry.

6.3 Carbohydrates [i](#)

There are no oligosaccharides in this entry.

6.4 Ligands

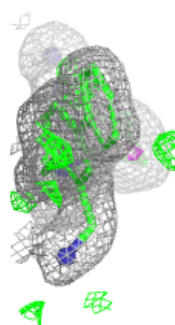
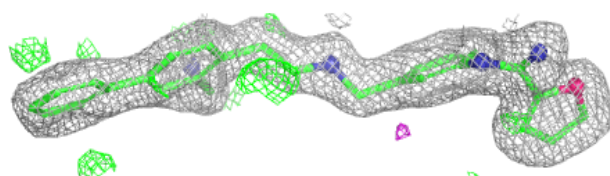
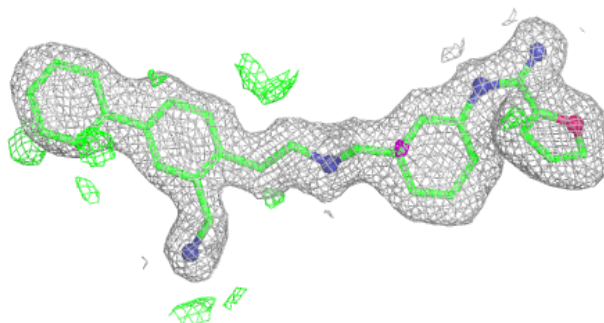
In the following table, the Atoms column lists the number of modelled atoms in the group and the number defined in the chemical component dictionary. The B-factors column lists the minimum, median, 95th percentile and maximum values of B factors of atoms in the group. The column labelled 'Q< 0.9' lists the number of atoms with occupancy less than 0.9.

Mol	Type	Chain	Res	Atoms	RSCC	RSR	B-factors(Å ²)	Q<0.9
7	GOL	B	508	6/6	0.34	0.20	64,69,73,74	0
6	BTB	A	507	14/14	0.68	0.20	50,72,82,84	0
6	BTB	A	508	14/14	0.77	0.21	38,68,84,90	0
6	BTB	A	506	14/14	0.82	0.21	28,72,77,80	0
6	BTB	B	506	14/14	0.88	0.15	39,68,71,74	0
6	BTB	B	505	14/14	0.89	0.11	22,25,31,32	0
7	GOL	A	509	6/6	0.91	0.12	28,35,40,41	0
5	ACT	A	505	4/4	0.92	0.12	34,47,47,53	0
5	ACT	B	504	4/4	0.95	0.08	31,38,39,41	0
7	GOL	B	507	6/6	0.95	0.09	29,36,37,37	0
5	ACT	A	504	4/4	0.95	0.12	29,42,44,44	0
4	A1BT2	B	503	32/32	0.97	0.08	8,32,41,46	0
4	A1BT2	A	503	32/32	0.97	0.09	12,31,57,65	0
9	GD	A	511	1/1	0.97	0.05	42,42,42,42	1
3	H4B	A	502	17/17	0.98	0.04	15,20,24,26	0
3	H4B	B	502	17/17	0.98	0.04	15,19,22,25	0
2	HEM	A	501	43/43	0.99	0.05	16,19,24,29	0
8	CL	A	510	1/1	0.99	0.10	31,31,31,31	0
8	CL	B	509	1/1	0.99	0.07	28,28,28,28	0
2	HEM	B	501	43/43	0.99	0.04	14,17,22,27	0
9	GD	B	510	1/1	0.99	0.02	22,22,22,22	0
10	ZN	A	512	1/1	1.00	0.01	21,21,21,21	0

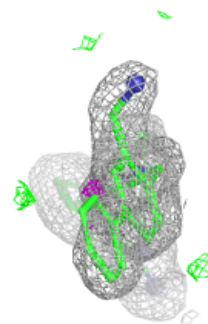
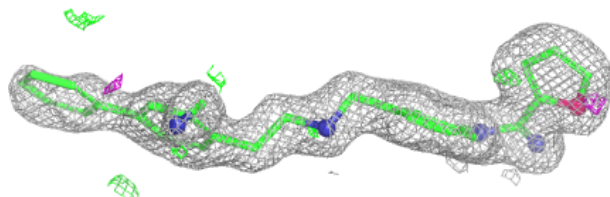
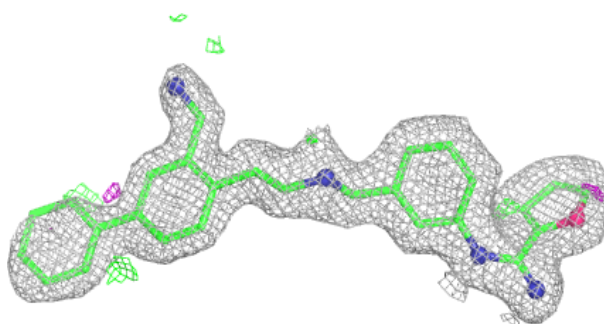
The following is a graphical depiction of the model fit to experimental electron density of all instances of the Ligand of Interest. In addition, ligands with molecular weight > 250 and outliers as shown on the geometry validation Tables will also be included. Each fit is shown from different orientation to approximate a three-dimensional view.

Electron density around A1BT2 B 503:

$2mF_o-DF_c$ (at 0.7 rmsd) in gray
 mF_o-DF_c (at 3 rmsd) in purple (negative)
and green (positive)

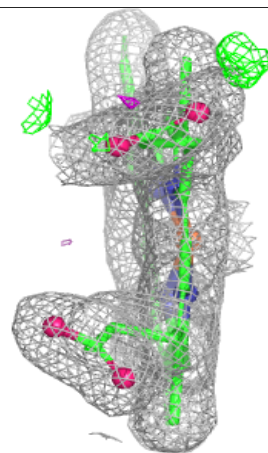
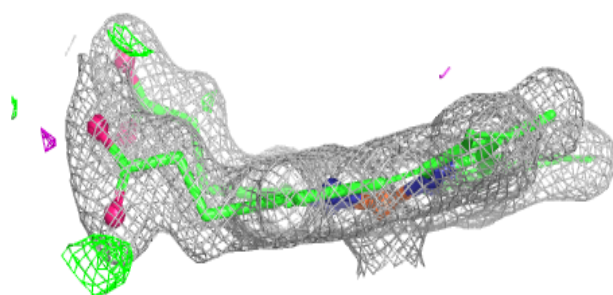
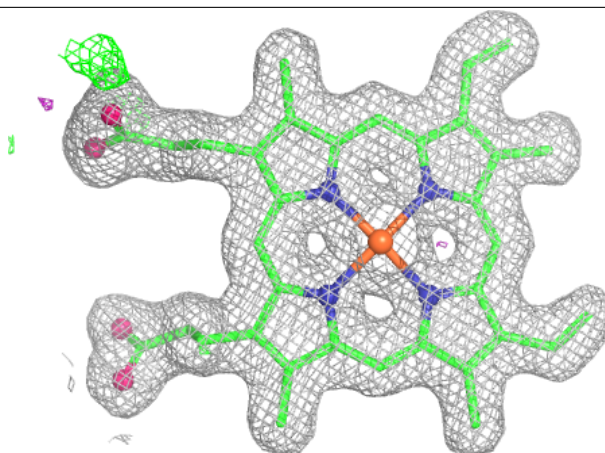
**Electron density around A1BT2 A 503:**

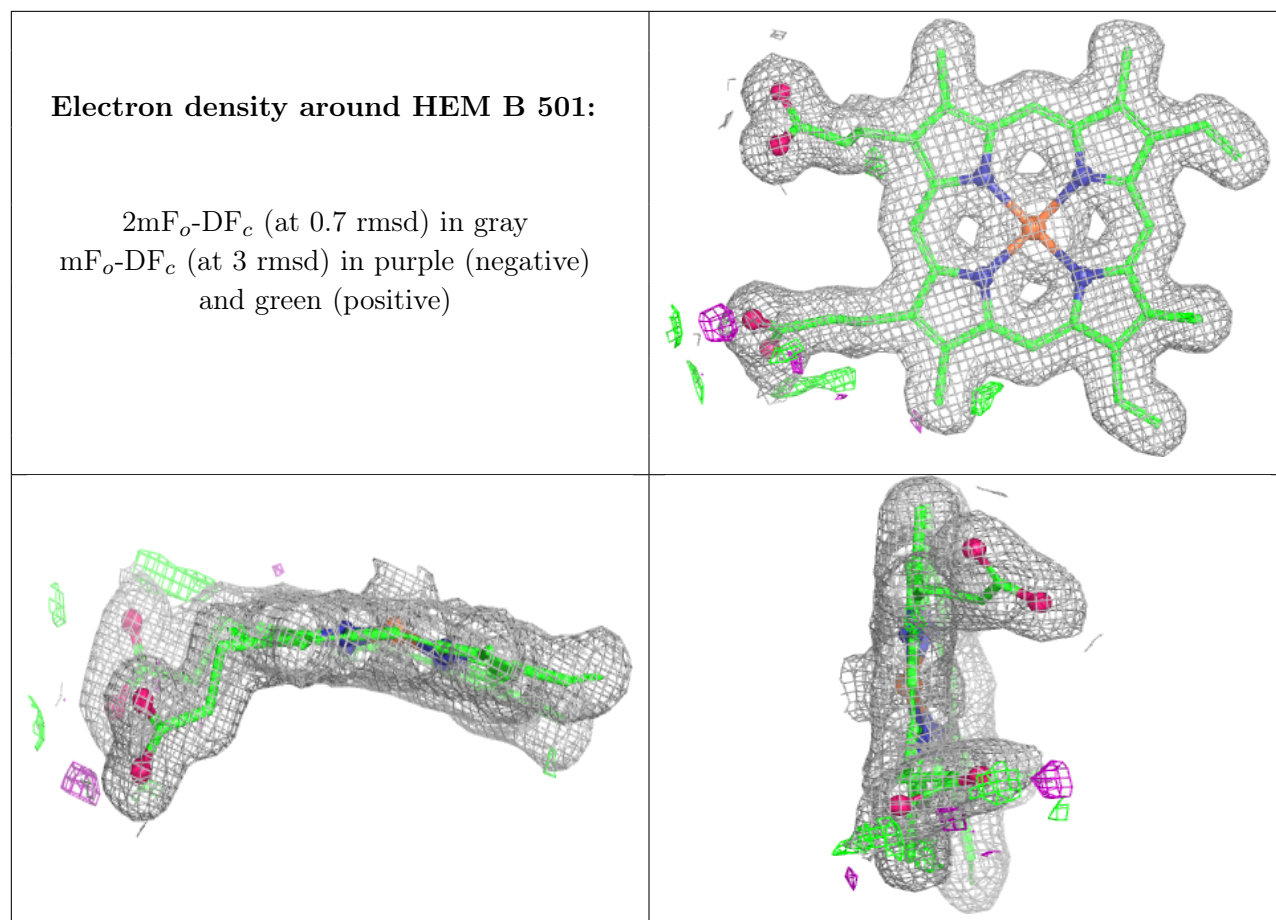
$2mF_o-DF_c$ (at 0.7 rmsd) in gray
 mF_o-DF_c (at 3 rmsd) in purple (negative)
and green (positive)



Electron density around HEM A 501:

$2mF_o-DF_c$ (at 0.7 rmsd) in gray
 mF_o-DF_c (at 3 rmsd) in purple (negative)
and green (positive)





6.5 Other polymers ⓘ

There are no such residues in this entry.