



wwPDB EM Validation Summary Report ⓘ

Sep 3, 2025 – 05:32 PM EDT

PDB ID : 9ME1 / pdb_00009me1
EMDB ID : EMD-48182
Title : hCXCR4-CXCL12 complex with 1:1 stoichiometry
Authors : Zhang, Z.; Patel, D.J.
Deposited on : 2024-12-05
Resolution : 3.37 Å(reported)

This is a wwPDB EM Validation Summary Report for a publicly released PDB entry.

We welcome your comments at validation@mail.wwpdb.org

A user guide is available at

<https://www.wwpdb.org/validation/2017/EMValidationReportHelp>

with specific help available everywhere you see the ⓘ symbol.

The types of validation reports are described at

<http://www.wwpdb.org/validation/2017/FAQs#types>.

The following versions of software and data (see [references ⓘ](#)) were used in the production of this report:

EMDB validation analysis : 0.0.1.dev126
MolProbity : 4-5-2 with Phenix2.0rc1
Percentile statistics : 20231227.v01 (using entries in the PDB archive December 27th 2023)
MapQ : 1.9.13
Ideal geometry (proteins) : Engh & Huber (2001)
Ideal geometry (DNA, RNA) : Parkinson et al. (1996)
Validation Pipeline (wwPDB-VP) : 2.45.1

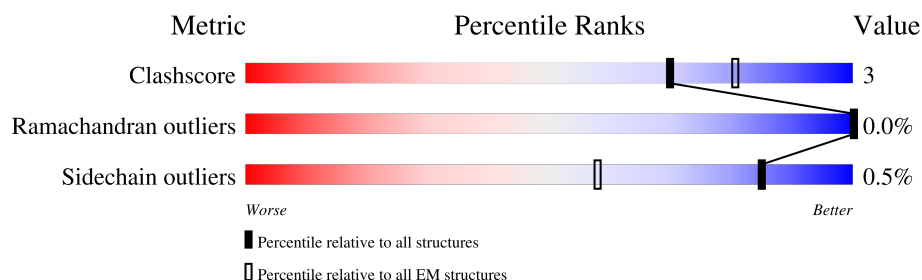
1 Overall quality at a glance

The following experimental techniques were used to determine the structure:

ELECTRON MICROSCOPY

The reported resolution of this entry is 3.37 Å.

Percentile scores (ranging between 0-100) for global validation metrics of the entry are shown in the following graphic. The table shows the number of entries on which the scores are based.









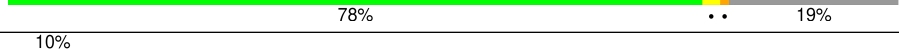
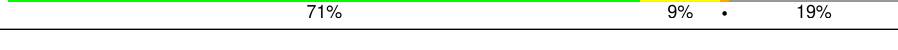
Metric	Whole archive (#Entries)	EM structures (#Entries)
Clashscore	210492	15764
Ramachandran outliers	207382	16835
Sidechain outliers	206894	16415

The table below summarises the geometric issues observed across the polymeric chains and their fit to the map. The red, orange, yellow and green segments of the bar indicate the fraction of residues that contain outliers for ≥ 3 , 2, 1 and 0 types of geometric quality criteria respectively. A grey segment represents the fraction of residues that are not modelled. The numeric value for each fraction is indicated below the corresponding segment, with a dot representing fractions $\leq 5\%$. The upper red bar (where present) indicates the fraction of residues that have poor fit to the EM map (all-atom inclusion $< 40\%$). The numeric value is given above the bar.

Mol	Chain	Length	Quality of chain
1	A	360	
1	B	360	
1	C	360	
1	D	360	
1	E	360	
1	I	360	
1	K	360	
1	L	360	

Continued on next page...

Continued from previous page...

Mol	Chain	Length	Quality of chain
2	F	80	
2	G	80	
2	H	80	
2	J	80	
2	M	80	
2	N	80	
2	O	80	
2	P	80	

2 Entry composition

There are 2 unique types of molecules in this entry. The entry contains 21155 atoms, of which 0 are hydrogens and 0 are deuteriums.

In the tables below, the AltConf column contains the number of residues with at least one atom in alternate conformation and the Trace column contains the number of residues modelled with at most 2 atoms.

- Molecule 1 is a protein called C-X-C chemokine receptor type 4.

Mol	Chain	Residues	Atoms					AltConf	Trace
1	B	281	Total	C	N	O	S	0	0
			2282	1530	363	377	12		
1	A	281	Total	C	N	O	S	0	0
			2277	1526	362	377	12		
1	C	281	Total	C	N	O	S	0	0
			2282	1530	363	377	12		
1	D	281	Total	C	N	O	S	0	0
			2282	1530	363	377	12		
1	I	281	Total	C	N	O	S	0	0
			2282	1530	363	377	12		
1	E	281	Total	C	N	O	S	0	0
			2282	1530	363	377	12		
1	K	281	Total	C	N	O	S	0	0
			2282	1530	363	377	12		
1	L	281	Total	C	N	O	S	0	0
			2282	1530	363	377	12		

There are 64 discrepancies between the modelled and reference sequences:

Chain	Residue	Modelled	Actual	Comment	Reference
B	353	ASP	-	expression tag	UNP P61073
B	354	TYR	-	expression tag	UNP P61073
B	355	LYS	-	expression tag	UNP P61073
B	356	ASP	-	expression tag	UNP P61073
B	357	ASP	-	expression tag	UNP P61073
B	358	ASP	-	expression tag	UNP P61073
B	359	ASP	-	expression tag	UNP P61073
B	360	LYS	-	expression tag	UNP P61073
A	353	ASP	-	expression tag	UNP P61073
A	354	TYR	-	expression tag	UNP P61073
A	355	LYS	-	expression tag	UNP P61073
A	356	ASP	-	expression tag	UNP P61073
A	357	ASP	-	expression tag	UNP P61073
A	358	ASP	-	expression tag	UNP P61073

Continued on next page...

Continued from previous page...

Chain	Residue	Modelled	Actual	Comment	Reference
A	359	ASP	-	expression tag	UNP P61073
A	360	LYS	-	expression tag	UNP P61073
C	353	ASP	-	expression tag	UNP P61073
C	354	TYR	-	expression tag	UNP P61073
C	355	LYS	-	expression tag	UNP P61073
C	356	ASP	-	expression tag	UNP P61073
C	357	ASP	-	expression tag	UNP P61073
C	358	ASP	-	expression tag	UNP P61073
C	359	ASP	-	expression tag	UNP P61073
C	360	LYS	-	expression tag	UNP P61073
D	353	ASP	-	expression tag	UNP P61073
D	354	TYR	-	expression tag	UNP P61073
D	355	LYS	-	expression tag	UNP P61073
D	356	ASP	-	expression tag	UNP P61073
D	357	ASP	-	expression tag	UNP P61073
D	358	ASP	-	expression tag	UNP P61073
D	359	ASP	-	expression tag	UNP P61073
D	360	LYS	-	expression tag	UNP P61073
I	353	ASP	-	expression tag	UNP P61073
I	354	TYR	-	expression tag	UNP P61073
I	355	LYS	-	expression tag	UNP P61073
I	356	ASP	-	expression tag	UNP P61073
I	357	ASP	-	expression tag	UNP P61073
I	358	ASP	-	expression tag	UNP P61073
I	359	ASP	-	expression tag	UNP P61073
I	360	LYS	-	expression tag	UNP P61073
E	353	ASP	-	expression tag	UNP P61073
E	354	TYR	-	expression tag	UNP P61073
E	355	LYS	-	expression tag	UNP P61073
E	356	ASP	-	expression tag	UNP P61073
E	357	ASP	-	expression tag	UNP P61073
E	358	ASP	-	expression tag	UNP P61073
E	359	ASP	-	expression tag	UNP P61073
E	360	LYS	-	expression tag	UNP P61073
K	353	ASP	-	expression tag	UNP P61073
K	354	TYR	-	expression tag	UNP P61073
K	355	LYS	-	expression tag	UNP P61073
K	356	ASP	-	expression tag	UNP P61073
K	357	ASP	-	expression tag	UNP P61073
K	358	ASP	-	expression tag	UNP P61073
K	359	ASP	-	expression tag	UNP P61073
K	360	LYS	-	expression tag	UNP P61073

Continued on next page...

Continued from previous page...

Chain	Residue	Modelled	Actual	Comment	Reference
L	353	ASP	-	expression tag	UNP P61073
L	354	TYR	-	expression tag	UNP P61073
L	355	LYS	-	expression tag	UNP P61073
L	356	ASP	-	expression tag	UNP P61073
L	357	ASP	-	expression tag	UNP P61073
L	358	ASP	-	expression tag	UNP P61073
L	359	ASP	-	expression tag	UNP P61073
L	360	LYS	-	expression tag	UNP P61073

- Molecule 2 is a protein called Stromal cell-derived factor 1.

Mol	Chain	Residues	Atoms					AltConf	Trace
2	N	65	Total	C	N	O	S	0	0
			363	219	72	68	4		
2	O	65	Total	C	N	O	S	0	0
			363	219	72	68	4		
2	P	65	Total	C	N	O	S	0	0
			363	219	72	68	4		
2	M	65	Total	C	N	O	S	0	0
			363	219	72	68	4		
2	J	65	Total	C	N	O	S	0	0
			363	219	72	68	4		
2	F	65	Total	C	N	O	S	0	0
			363	219	72	68	4		
2	G	65	Total	C	N	O	S	0	0
			363	219	72	68	4		
2	H	65	Total	C	N	O	S	0	0
			363	219	72	68	4		

There are 64 discrepancies between the modelled and reference sequences:

Chain	Residue	Modelled	Actual	Comment	Reference
N	73	HIS	-	expression tag	UNP P48061
N	74	HIS	-	expression tag	UNP P48061
N	75	HIS	-	expression tag	UNP P48061
N	76	HIS	-	expression tag	UNP P48061
N	77	HIS	-	expression tag	UNP P48061
N	78	HIS	-	expression tag	UNP P48061
N	79	HIS	-	expression tag	UNP P48061
N	80	HIS	-	expression tag	UNP P48061
O	73	HIS	-	expression tag	UNP P48061
O	74	HIS	-	expression tag	UNP P48061

Continued on next page...

Continued from previous page...

Chain	Residue	Modelled	Actual	Comment	Reference
O	75	HIS	-	expression tag	UNP P48061
O	76	HIS	-	expression tag	UNP P48061
O	77	HIS	-	expression tag	UNP P48061
O	78	HIS	-	expression tag	UNP P48061
O	79	HIS	-	expression tag	UNP P48061
O	80	HIS	-	expression tag	UNP P48061
P	73	HIS	-	expression tag	UNP P48061
P	74	HIS	-	expression tag	UNP P48061
P	75	HIS	-	expression tag	UNP P48061
P	76	HIS	-	expression tag	UNP P48061
P	77	HIS	-	expression tag	UNP P48061
P	78	HIS	-	expression tag	UNP P48061
P	79	HIS	-	expression tag	UNP P48061
P	80	HIS	-	expression tag	UNP P48061
M	73	HIS	-	expression tag	UNP P48061
M	74	HIS	-	expression tag	UNP P48061
M	75	HIS	-	expression tag	UNP P48061
M	76	HIS	-	expression tag	UNP P48061
M	77	HIS	-	expression tag	UNP P48061
M	78	HIS	-	expression tag	UNP P48061
M	79	HIS	-	expression tag	UNP P48061
M	80	HIS	-	expression tag	UNP P48061
J	73	HIS	-	expression tag	UNP P48061
J	74	HIS	-	expression tag	UNP P48061
J	75	HIS	-	expression tag	UNP P48061
J	76	HIS	-	expression tag	UNP P48061
J	77	HIS	-	expression tag	UNP P48061
J	78	HIS	-	expression tag	UNP P48061
J	79	HIS	-	expression tag	UNP P48061
J	80	HIS	-	expression tag	UNP P48061
F	73	HIS	-	expression tag	UNP P48061
F	74	HIS	-	expression tag	UNP P48061
F	75	HIS	-	expression tag	UNP P48061
F	76	HIS	-	expression tag	UNP P48061
F	77	HIS	-	expression tag	UNP P48061
F	78	HIS	-	expression tag	UNP P48061
F	79	HIS	-	expression tag	UNP P48061
F	80	HIS	-	expression tag	UNP P48061
G	73	HIS	-	expression tag	UNP P48061
G	74	HIS	-	expression tag	UNP P48061
G	75	HIS	-	expression tag	UNP P48061
G	76	HIS	-	expression tag	UNP P48061

Continued on next page...

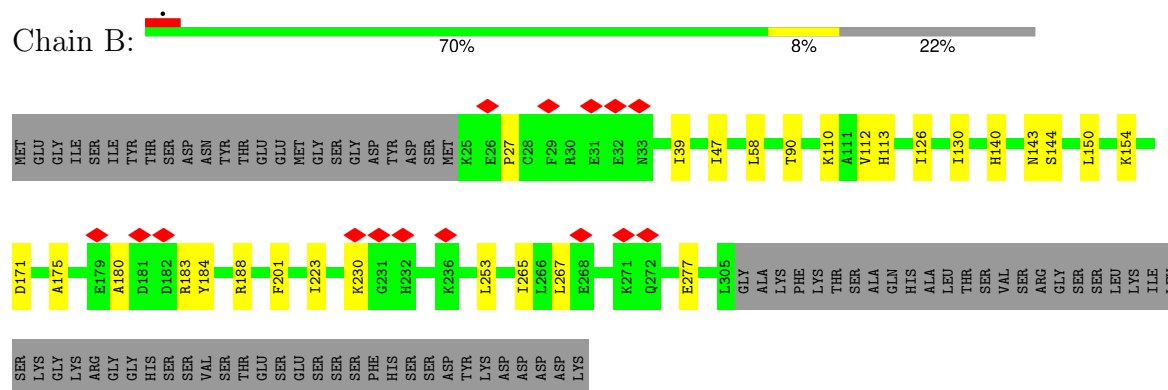
Continued from previous page...

Chain	Residue	Modelled	Actual	Comment	Reference
G	77	HIS	-	expression tag	UNP P48061
G	78	HIS	-	expression tag	UNP P48061
G	79	HIS	-	expression tag	UNP P48061
G	80	HIS	-	expression tag	UNP P48061
H	73	HIS	-	expression tag	UNP P48061
H	74	HIS	-	expression tag	UNP P48061
H	75	HIS	-	expression tag	UNP P48061
H	76	HIS	-	expression tag	UNP P48061
H	77	HIS	-	expression tag	UNP P48061
H	78	HIS	-	expression tag	UNP P48061
H	79	HIS	-	expression tag	UNP P48061
H	80	HIS	-	expression tag	UNP P48061

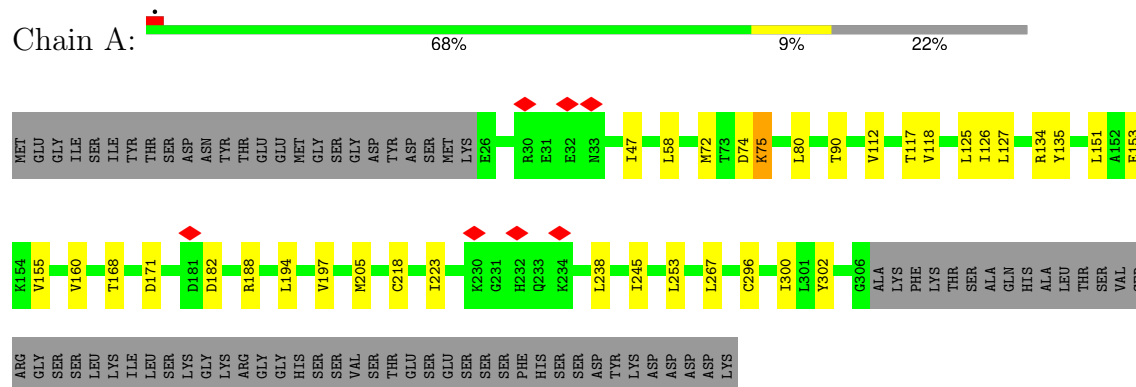
3 Residue-property plots

These plots are drawn for all protein, RNA, DNA and oligosaccharide chains in the entry. The first graphic for a chain summarises the proportions of the various outlier classes displayed in the second graphic. The second graphic shows the sequence view annotated by issues in geometry and atom inclusion in map density. Residues are color-coded according to the number of geometric quality criteria for which they contain at least one outlier: green = 0, yellow = 1, orange = 2 and red = 3 or more. A red diamond above a residue indicates a poor fit to the EM map for this residue (all-atom inclusion < 40%). Stretches of 2 or more consecutive residues without any outlier are shown as a green connector. Residues present in the sample, but not in the model, are shown in grey.

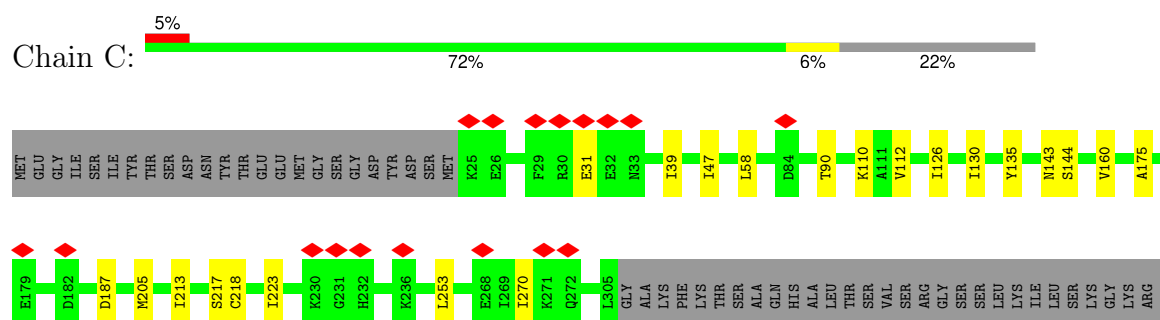
- Molecule 1: C-X-C chemokine receptor type 4



- Molecule 1: C-X-C chemokine receptor type 4



- Molecule 1: C-X-C chemokine receptor type 4



GLY
HIS
SER
SER
VAL
SER
THR
GLU
SER
GLU
ASN
SER
SER
SER
PHE
HIS
SER
SER
SER
ASP
TYR
LYS
ASP
ASP
ASP
LYS

- Molecule 1: C-X-C chemokine receptor type 4

Chain D:



MET GLU ILE ILE THR THR SER ASP ASN TYR THR GLU MET GLY SER GLY TYR ASP SER MET K25 E26 P27 C28 F29 R30 E31 E32 N33 I47 L58 M72 T90 K110 A111 V112 I126 I130 Y135 N143 V160 D171 A175

E179 D182 D187 R188 C218 I223 K230 G231 H232 K236 L253 I265 E268 K271 E277 L305 GLY ALA LYS PHE LYS THR SER ALA GLN HIS ALA LEU THR VAL SER ARG GLY SER SER LEU LYS ILE LEU SER LYS GLY ARG GLY HIS

SER VAL THR GLU SER SER SER PHE HIS SER ASP TYR LYS ASP ASP LYS

- Molecule 1: C-X-C chemokine receptor type 4

Chain I:



MET GLU ILE ILE THR THR SER ASP ASN TYR THR GLU MET GLY SER GLY ASP TYR ASP SER MET K25 E26 P27 C28 F29 R30 E31 E32 N33 N35 G52 I53 V54 G55 N56 R70 S71 M72 T90 V112 I126 N143 R146 E153 K154 V160

E179 A180 D181 D182 R183 V184 I185 D193 I204 H205 L210 L216 K225 H228 S229 K230 G231 H232 Q233 K234 R235 K236 A237 I259 E268 K271 Q272 I284 E286 L305 GLY ALA LYS PHE LYS THR SER ALA GLN HIS ALA LEU THR SER VAL ARG

GLY SER SER LEU LYS ILE LEU SER LYS LYS ARG GLY GLY HIS SER SER VAL THR GLU SER SER SER MET ASP ASP LYS

- Molecule 1: C-X-C chemokine receptor type 4

Chain E:



MET GLU ILE ILE THR THR SER ASP ASN TYR THR GLU MET GLY SER GLY ASP TYR ASP SER MET K25 E26 P27 C28 F29 R30 E31 E32 N33 I39 G52 I53 V54 G55 N56 K68 L69 R70 T90 M101 V112 I126 L127 I130 R146 E153

K154 V160 E179 A180 D181 D182 R183 Y184 I185 D193 L210 L216 H228 S229 K230 G231 H232 Q233 K234 R235 K236 I265 E268 I269 I270 K271 Q272 E275 F276 E277 K282 V283 L305 GLY ALA LYS PHE LYS THR SER ALA GLN HIS ALA LEU THR SER VAL SER

ARG GLY SER SER LEU ILE LEU SER LYS LYS ARG GLY GLY HIS SER SER VAL THR TYR ASP ASP ASP ASP LYS

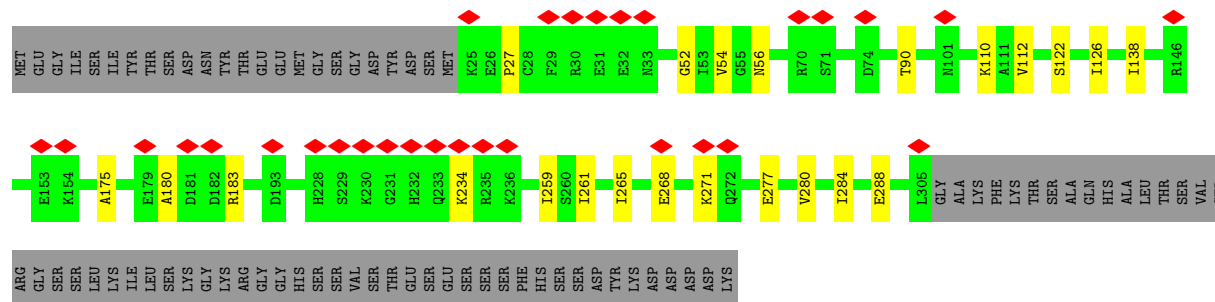
- Molecule 1: C-X-C chemokine receptor type 4

Chain K:

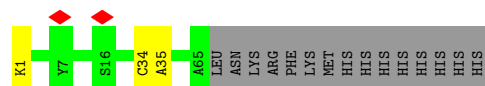
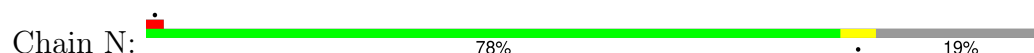


MET GLU ILE ILE THR THR SER ASP ASN TYR THR GLU MET GLY SER GLY ASP TYR ASP SER MET K25 E26 P27 C28 F29 R30 E31 E32 N33 I39 P42 G52 N56 K68 L69 R70 I89 T90 V99 L108 V112 S122 I126 L127

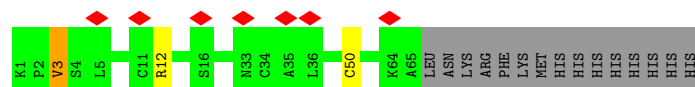
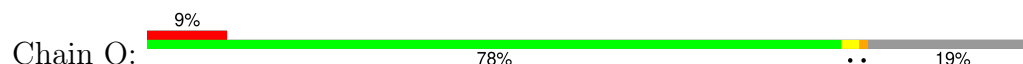
- Molecule 1: C-X-C chemokine receptor type 4



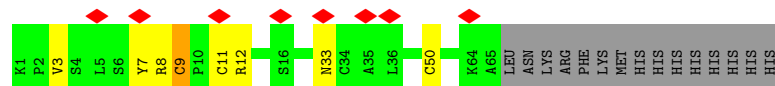
- Molecule 2: Stromal cell-derived factor 1



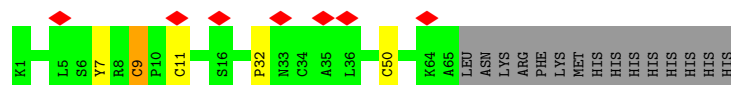
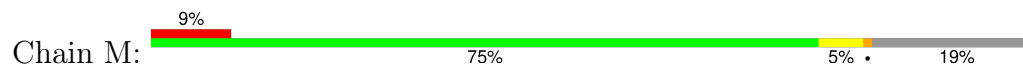
- Molecule 2: Stromal cell-derived factor 1



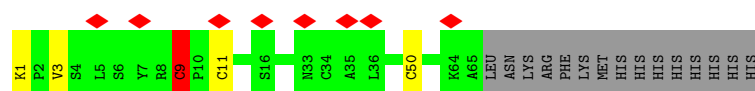
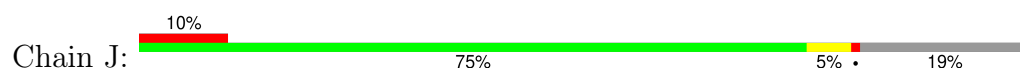
- Molecule 2: Stromal cell-derived factor 1



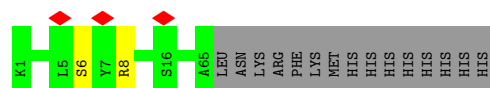
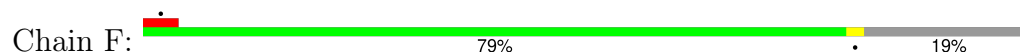
- Molecule 2: Stromal cell-derived factor 1



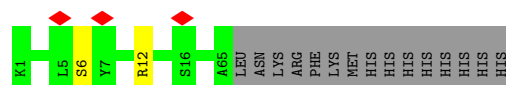
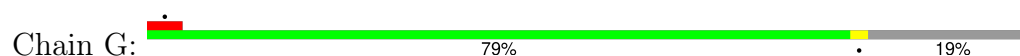
- Molecule 2: Stromal cell-derived factor 1



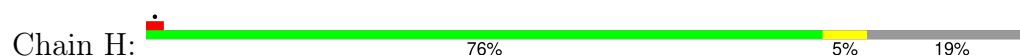
- Molecule 2: Stromal cell-derived factor 1



- Molecule 2: Stromal cell-derived factor 1



- Molecule 2: Stromal cell-derived factor 1



4 Experimental information

Property	Value	Source
EM reconstruction method	SINGLE PARTICLE	Depositor
Imposed symmetry	POINT, Not provided	
Number of particles used	135936	Depositor
Resolution determination method	FSC 0.143 CUT-OFF	Depositor
CTF correction method	PHASE FLIPPING AND AMPLITUDE CORRECTION	Depositor
Microscope	FEI TALOS ARCTICA	Depositor
Voltage (kV)	300	Depositor
Electron dose ($e^-/\text{\AA}^2$)	52.8	Depositor
Minimum defocus (nm)	800	Depositor
Maximum defocus (nm)	2200	Depositor
Magnification	Not provided	
Image detector	GATAN K3 (6k x 4k)	Depositor
Maximum map value	0.332	Depositor
Minimum map value	-0.150	Depositor
Average map value	0.002	Depositor
Map value standard deviation	0.014	Depositor
Recommended contour level	0.08	Depositor
Map size (Å)	297.36, 297.36, 297.36	wwPDB
Map dimensions	360, 360, 360	wwPDB
Map angles (°)	90.0, 90.0, 90.0	wwPDB
Pixel spacing (Å)	0.826, 0.826, 0.826	Depositor

5 Model quality [i](#)

5.1 Standard geometry [i](#)

The Z score for a bond length (or angle) is the number of standard deviations the observed value is removed from the expected value. A bond length (or angle) with $|Z| > 5$ is considered an outlier worth inspection. RMSZ is the root-mean-square of all Z scores of the bond lengths (or angles).

Mol	Chain	Bond lengths		Bond angles	
		RMSZ	# Z >5	RMSZ	# Z >5
1	A	0.24	0/2341	0.54	0/3189
1	B	0.25	0/2346	0.56	2/3195 (0.1%)
1	C	0.25	0/2346	0.57	1/3195 (0.0%)
1	D	0.24	0/2346	0.56	0/3195
1	E	0.31	0/2346	0.64	1/3195 (0.0%)
1	I	0.24	0/2346	0.57	2/3195 (0.1%)
1	K	0.24	0/2346	0.57	0/3195
1	L	0.25	0/2346	0.60	0/3195
2	F	0.15	0/365	0.40	0/504
2	G	0.19	0/365	0.45	0/504
2	H	0.19	0/365	0.48	0/504
2	J	0.19	0/365	0.58	0/504
2	M	0.23	0/365	0.54	0/504
2	N	0.15	0/365	0.39	0/504
2	O	0.21	0/365	0.52	0/504
2	P	0.26	0/365	0.57	0/504
All	All	0.25	0/21683	0.57	6/29586 (0.0%)

Chiral center outliers are detected by calculating the chiral volume of a chiral center and verifying if the center is modelled as a planar moiety or with the opposite hand. A planarity outlier is detected by checking planarity of atoms in a peptide group, atoms in a mainchain group or atoms of a sidechain that are expected to be planar.

Mol	Chain	#Chirality outliers	#Planarity outliers
2	J	0	1
2	M	0	1
2	P	0	1
All	All	0	3

There are no bond length outliers.

The worst 5 of 6 bond angle outliers are listed below:

Mol	Chain	Res	Type	Atoms	Z	Observed(°)	Ideal(°)
1	E	276	PHE	N-CA-C	-6.03	104.79	111.36
1	C	39	ILE	N-CA-C	-5.83	107.13	112.96
1	B	39	ILE	N-CA-C	-5.62	107.34	112.96
1	I	205	MET	CB-CG-SD	5.30	128.61	112.70
1	I	72	MET	CB-CG-SD	5.20	128.29	112.70

There are no chirality outliers.

All (3) planarity outliers are listed below:

Mol	Chain	Res	Type	Group
2	J	9	CYS	Peptide
2	M	9	CYS	Peptide
2	P	9	CYS	Peptide

5.2 Too-close contacts ⓘ

In the following table, the Non-H and H(model) columns list the number of non-hydrogen atoms and hydrogen atoms in the chain respectively. The H(added) column lists the number of hydrogen atoms added and optimized by MolProbity. The Clashes column lists the number of clashes within the asymmetric unit, whereas Symm-Clashes lists symmetry-related clashes.

Mol	Chain	Non-H	H(model)	H(added)	Clashes	Symm-Clashes
1	A	2277	0	2339	24	0
1	B	2282	0	2351	17	0
1	C	2282	0	2351	15	0
1	D	2282	0	2351	18	0
1	E	2282	0	2351	17	0
1	I	2282	0	2351	15	0
1	K	2282	0	2351	22	0
1	L	2282	0	2351	17	0
2	F	363	0	227	2	0
2	G	363	0	227	2	0
2	H	363	0	227	2	0
2	J	363	0	227	4	0
2	M	363	0	227	3	0
2	N	363	0	227	2	0
2	O	363	0	227	3	0
2	P	363	0	227	7	0
All	All	21155	0	20612	141	0

The all-atom clashscore is defined as the number of clashes found per 1000 atoms (including hydrogen atoms). The all-atom clashscore for this structure is 3.

The worst 5 of 141 close contacts within the same asymmetric unit are listed below, sorted by their clash magnitude.

Atom-1	Atom-2	Interatomic distance (Å)	Clash overlap (Å)
2:J:9:CYS:HB3	2:J:11:CYS:H	1.50	0.77
1:K:27:PRO:HG3	2:M:50:CYS:HB2	1.73	0.69
2:M:9:CYS:HB3	2:M:11:CYS:H	1.61	0.66
1:L:259:ILE:HD11	2:P:3:VAL:HG23	1.80	0.63
1:K:42:PRO:HG2	1:K:99:VAL:HB	1.82	0.61

There are no symmetry-related clashes.

5.3 Torsion angles [i](#)

5.3.1 Protein backbone [i](#)

In the following table, the Percentiles column shows the percent Ramachandran outliers of the chain as a percentile score with respect to all PDB entries followed by that with respect to all EM entries.

The Analysed column shows the number of residues for which the backbone conformation was analysed, and the total number of residues.

Mol	Chain	Analysed	Favoured	Allowed	Outliers	Percentiles	
1	A	279/360 (78%)	269 (96%)	10 (4%)	0	100	100
1	B	279/360 (78%)	267 (96%)	11 (4%)	1 (0%)	30	60
1	C	279/360 (78%)	261 (94%)	18 (6%)	0	100	100
1	D	279/360 (78%)	268 (96%)	11 (4%)	0	100	100
1	E	279/360 (78%)	264 (95%)	15 (5%)	0	100	100
1	I	279/360 (78%)	264 (95%)	15 (5%)	0	100	100
1	K	279/360 (78%)	263 (94%)	16 (6%)	0	100	100
1	L	279/360 (78%)	265 (95%)	14 (5%)	0	100	100
2	F	63/80 (79%)	59 (94%)	4 (6%)	0	100	100
2	G	63/80 (79%)	57 (90%)	6 (10%)	0	100	100
2	H	63/80 (79%)	58 (92%)	5 (8%)	0	100	100
2	J	63/80 (79%)	56 (89%)	7 (11%)	0	100	100
2	M	63/80 (79%)	52 (82%)	11 (18%)	0	100	100
2	N	63/80 (79%)	59 (94%)	4 (6%)	0	100	100

Continued on next page...

Continued from previous page...

Mol	Chain	Analysed	Favoured	Allowed	Outliers	Percentiles	
2	O	63/80 (79%)	54 (86%)	9 (14%)	0	100	100
2	P	63/80 (79%)	54 (86%)	9 (14%)	0	100	100
All	All	2736/3520 (78%)	2570 (94%)	165 (6%)	1 (0%)	100	100

All (1) Ramachandran outliers are listed below:

Mol	Chain	Res	Type
1	B	27	PRO

5.3.2 Protein sidechains ⓘ

In the following table, the Percentiles column shows the percent sidechain outliers of the chain as a percentile score with respect to all PDB entries followed by that with respect to all EM entries.

The Analysed column shows the number of residues for which the sidechain conformation was analysed, and the total number of residues.

Mol	Chain	Analysed	Rotameric	Outliers	Percentiles	
1	A	250/319 (78%)	249 (100%)	1 (0%)	89	93
1	B	251/319 (79%)	250 (100%)	1 (0%)	89	93
1	C	251/319 (79%)	250 (100%)	1 (0%)	89	93
1	D	251/319 (79%)	251 (100%)	0	100	100
1	E	251/319 (79%)	247 (98%)	4 (2%)	58	75
1	I	251/319 (79%)	251 (100%)	0	100	100
1	K	251/319 (79%)	250 (100%)	1 (0%)	89	93
1	L	251/319 (79%)	251 (100%)	0	100	100
2	F	14/75 (19%)	14 (100%)	0	100	100
2	G	14/75 (19%)	14 (100%)	0	100	100
2	H	14/75 (19%)	14 (100%)	0	100	100
2	J	14/75 (19%)	13 (93%)	1 (7%)	12	37
2	M	14/75 (19%)	14 (100%)	0	100	100
2	N	14/75 (19%)	14 (100%)	0	100	100
2	O	14/75 (19%)	13 (93%)	1 (7%)	12	37
2	P	14/75 (19%)	14 (100%)	0	100	100

Continued on next page...

Continued from previous page...

Mol	Chain	Analysed	Rotameric	Outliers	Percentiles
All	All	2119/3152 (67%)	2109 (100%)	10 (0%)	85 92

5 of 10 residues with a non-rotameric sidechain are listed below:

Mol	Chain	Res	Type
1	E	282	LYS
1	K	305	LEU
2	J	9	CYS
1	C	270	ILE
1	E	185	ILE

Sometimes sidechains can be flipped to improve hydrogen bonding and reduce clashes. 5 of 10 such sidechains are listed below:

Mol	Chain	Res	Type
1	I	33	ASN
1	I	56	ASN
1	K	79	HIS
1	C	35	ASN
1	C	56	ASN

5.3.3 RNA ⓘ

There are no RNA molecules in this entry.

5.4 Non-standard residues in protein, DNA, RNA chains ⓘ

There are no non-standard protein/DNA/RNA residues in this entry.

5.5 Carbohydrates ⓘ

There are no oligosaccharides in this entry.

5.6 Ligand geometry ⓘ

There are no ligands in this entry.

5.7 Other polymers [i](#)

There are no such residues in this entry.

5.8 Polymer linkage issues [i](#)

There are no chain breaks in this entry.

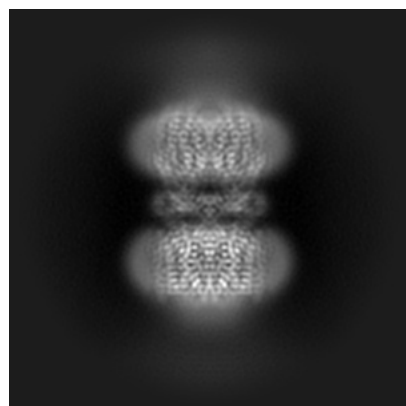
6 Map visualisation [i](#)

This section contains visualisations of the EMDB entry EMD-48182. These allow visual inspection of the internal detail of the map and identification of artifacts.

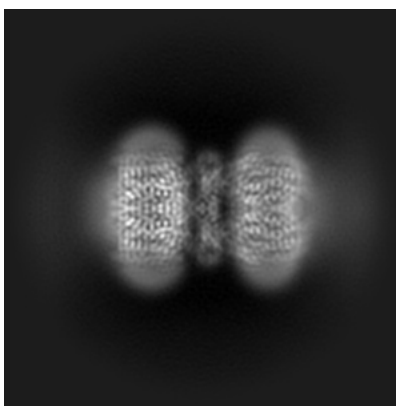
Images derived from a raw map, generated by summing the deposited half-maps, are presented below the corresponding image components of the primary map to allow further visual inspection and comparison with those of the primary map.

6.1 Orthogonal projections [i](#)

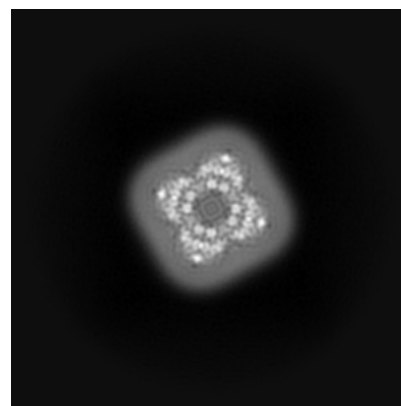
6.1.1 Primary map



X

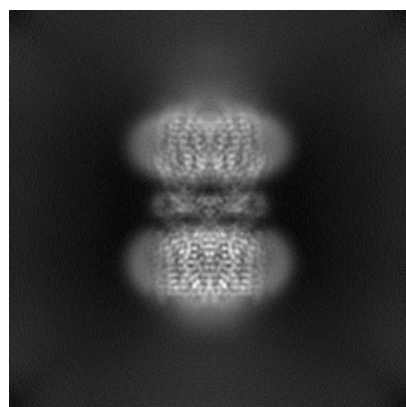


Y

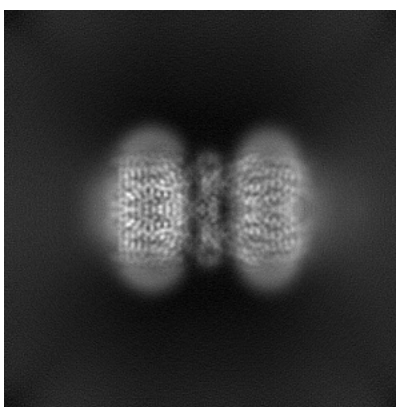


Z

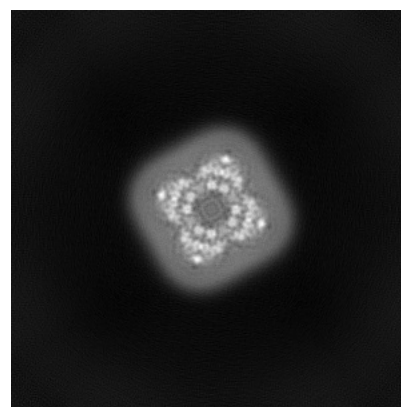
6.1.2 Raw map



X



Y

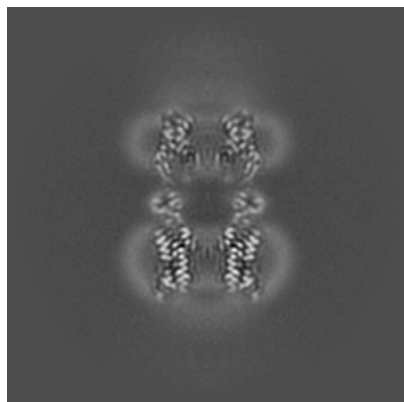


Z

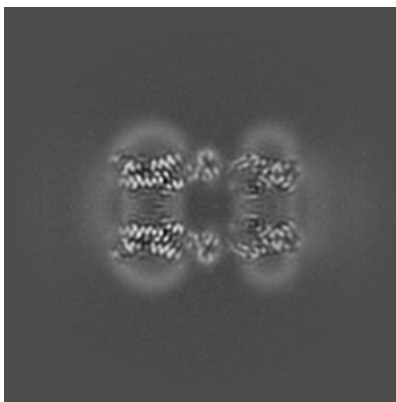
The images above show the map projected in three orthogonal directions.

6.2 Central slices [i](#)

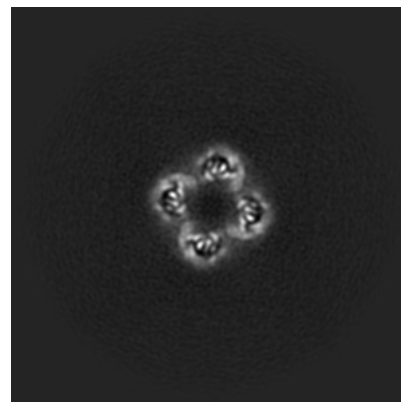
6.2.1 Primary map



X Index: 180

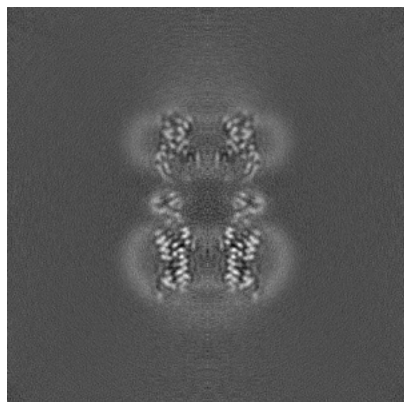


Y Index: 180

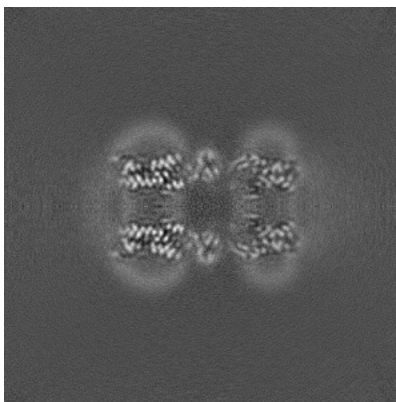


Z Index: 180

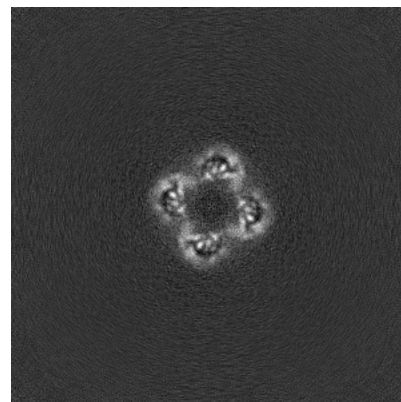
6.2.2 Raw map



X Index: 180



Y Index: 180

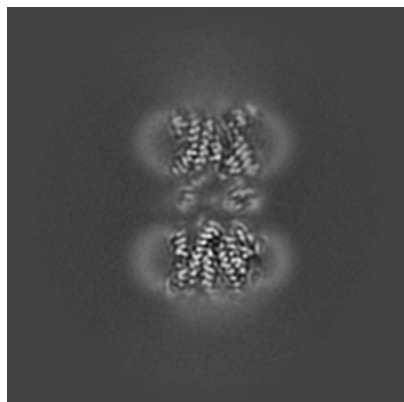


Z Index: 180

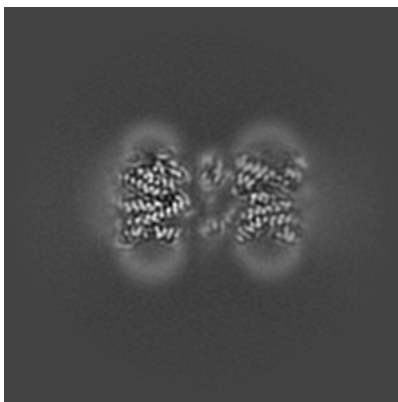
The images above show central slices of the map in three orthogonal directions.

6.3 Largest variance slices [i](#)

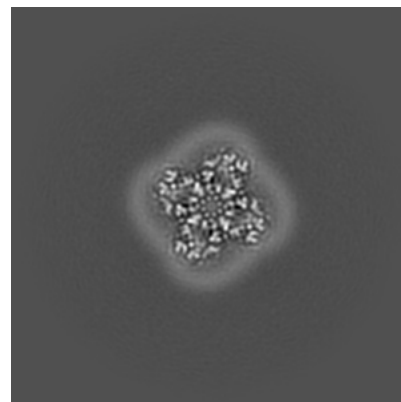
6.3.1 Primary map



X Index: 201

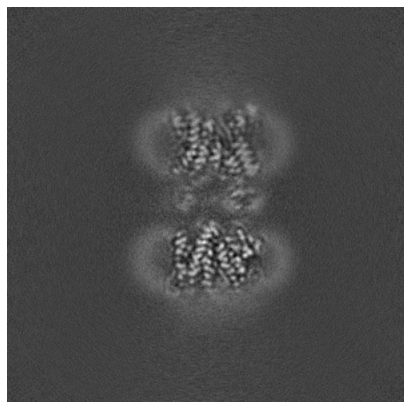


Y Index: 159

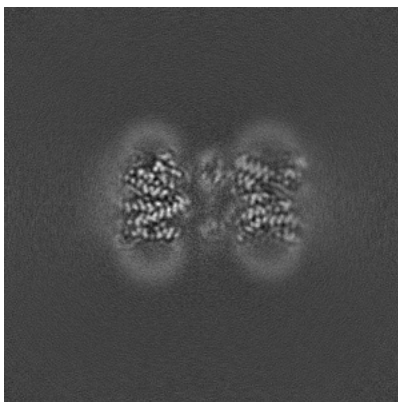


Z Index: 145

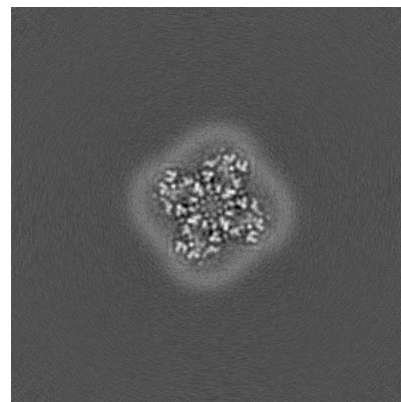
6.3.2 Raw map



X Index: 200



Y Index: 160

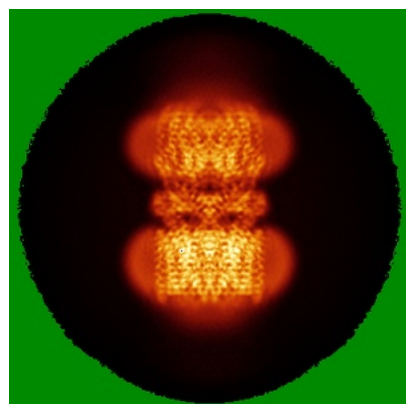


Z Index: 145

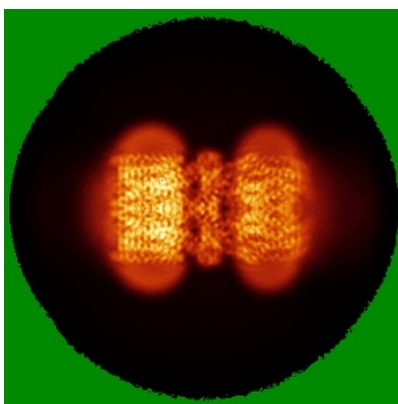
The images above show the largest variance slices of the map in three orthogonal directions.

6.4 Orthogonal standard-deviation projections (False-color) [i](#)

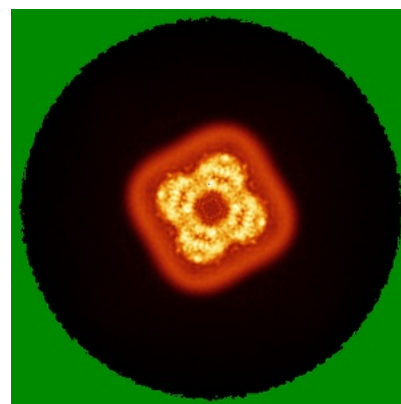
6.4.1 Primary map



X

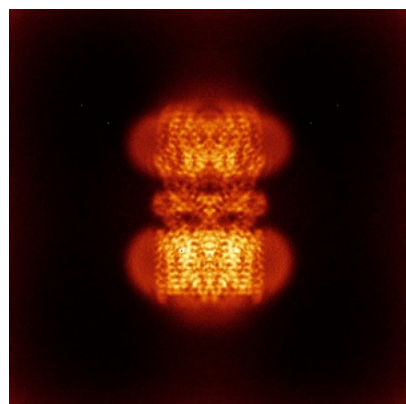


Y

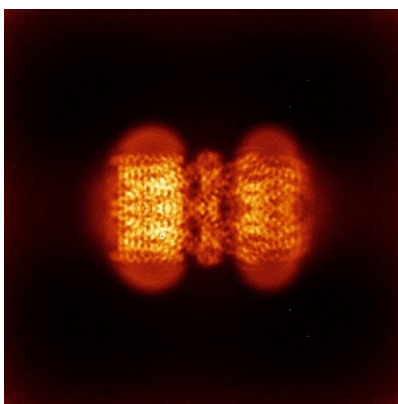


Z

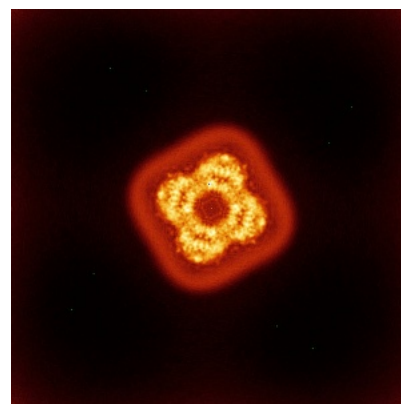
6.4.2 Raw map



X



Y

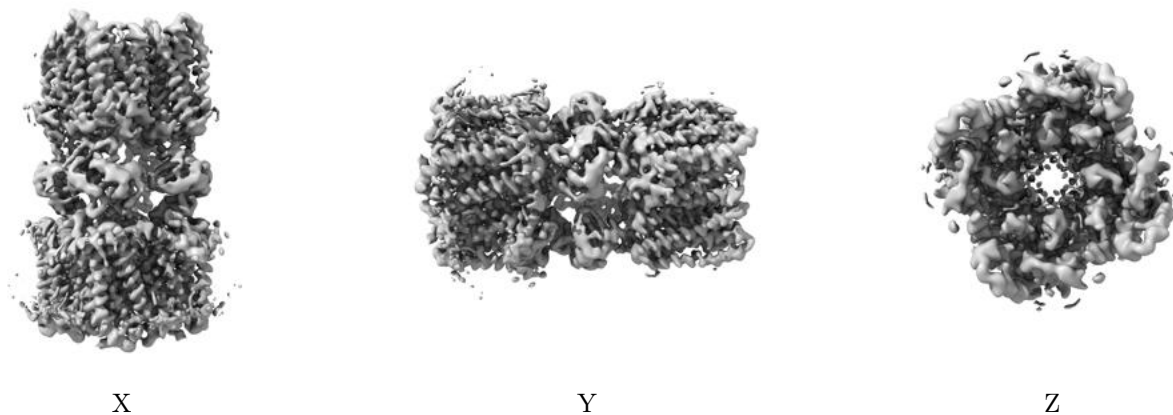


Z

The images above show the map standard deviation projections with false color in three orthogonal directions. Minimum values are shown in green, max in blue, and dark to light orange shades represent small to large values respectively.

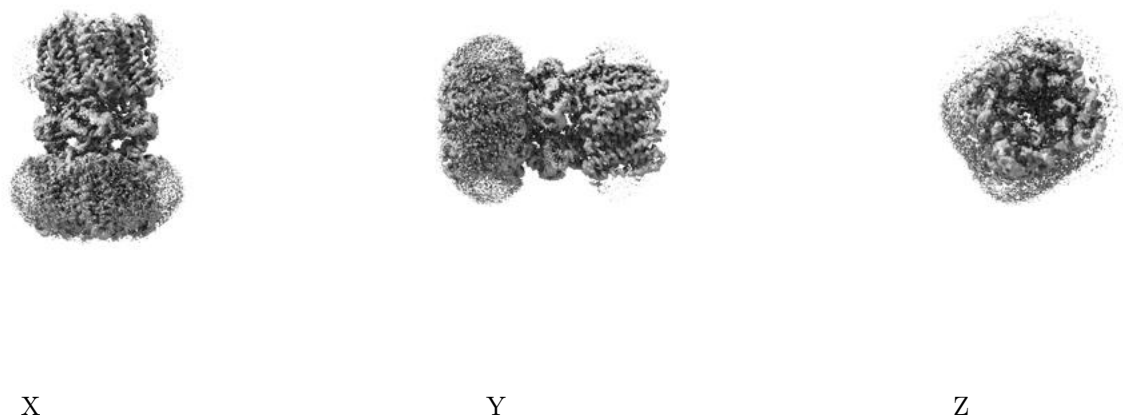
6.5 Orthogonal surface views [i](#)

6.5.1 Primary map



The images above show the 3D surface view of the map at the recommended contour level 0.08. These images, in conjunction with the slice images, may facilitate assessment of whether an appropriate contour level has been provided.

6.5.2 Raw map



These images show the 3D surface of the raw map. The raw map's contour level was selected so that its surface encloses the same volume as the primary map does at its recommended contour level.

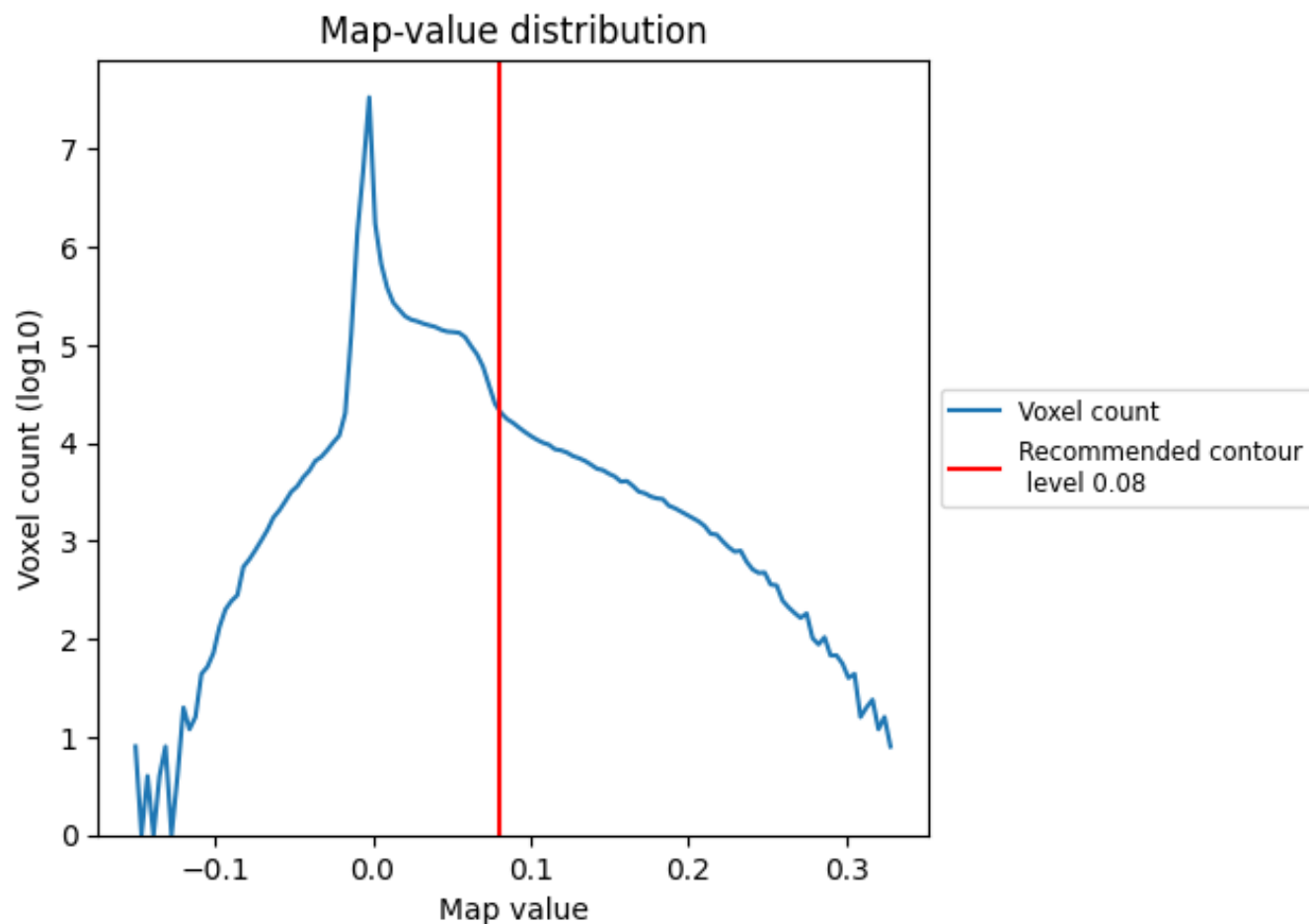
6.6 Mask visualisation [i](#)

This section was not generated. No masks/segmentation were deposited.

7 Map analysis [i](#)

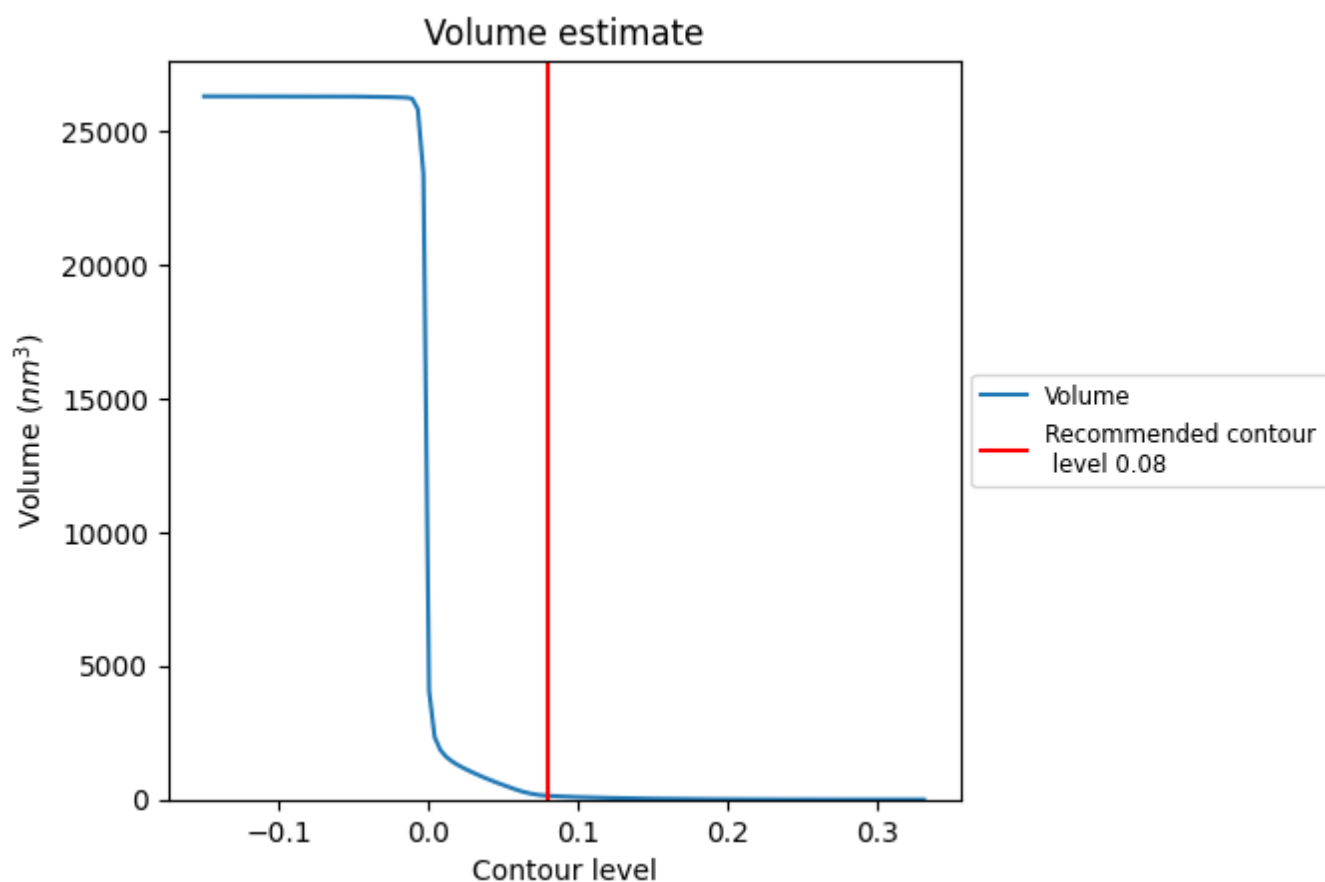
This section contains the results of statistical analysis of the map.

7.1 Map-value distribution [i](#)



The map-value distribution is plotted in 128 intervals along the x-axis. The y-axis is logarithmic. A spike in this graph at zero usually indicates that the volume has been masked.

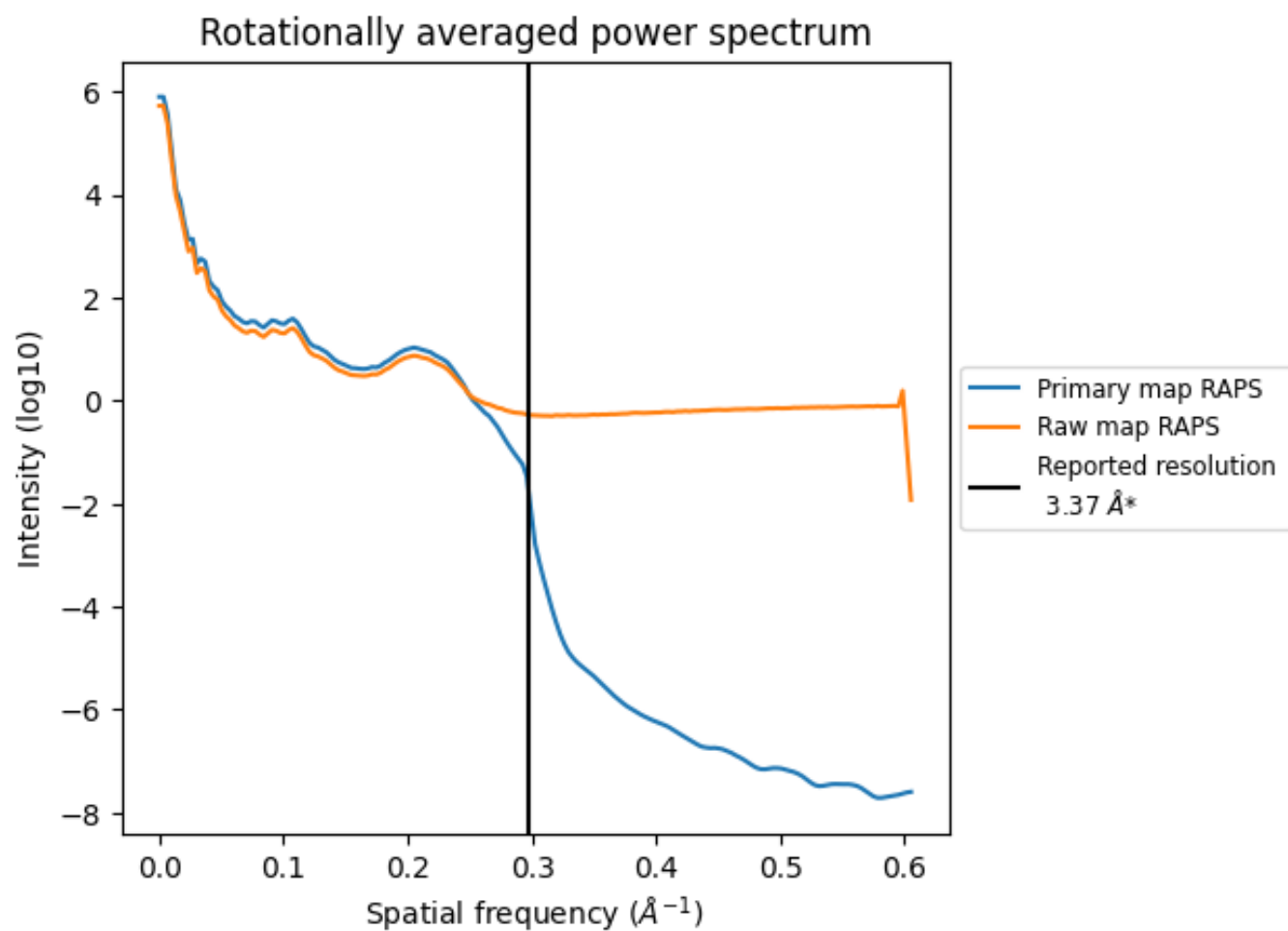
7.2 Volume estimate [i](#)



The volume at the recommended contour level is 142 nm³; this corresponds to an approximate mass of 129 kDa.

The volume estimate graph shows how the enclosed volume varies with the contour level. The recommended contour level is shown as a vertical line and the intersection between the line and the curve gives the volume of the enclosed surface at the given level.

7.3 Rotationally averaged power spectrum ⓘ

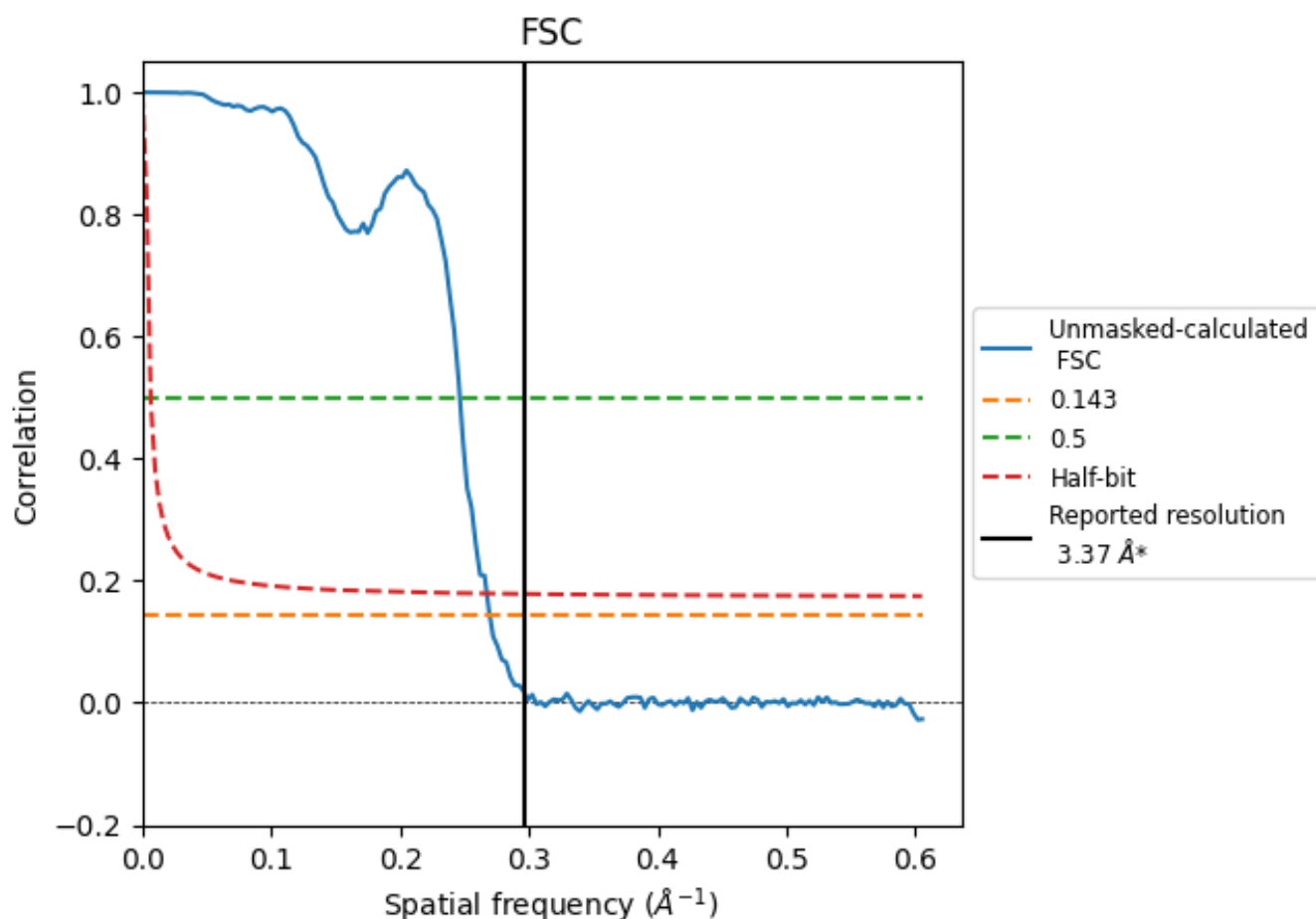


*Reported resolution corresponds to spatial frequency of 0.297 \AA^{-1}

8 Fourier-Shell correlation [i](#)

Fourier-Shell Correlation (FSC) is the most commonly used method to estimate the resolution of single-particle and subtomogram-averaged maps. The shape of the curve depends on the imposed symmetry, mask and whether or not the two 3D reconstructions used were processed from a common reference. The reported resolution is shown as a black line. A curve is displayed for the half-bit criterion in addition to lines showing the 0.143 gold standard cut-off and 0.5 cut-off.

8.1 FSC [i](#)



*Reported resolution corresponds to spatial frequency of 0.297 Å⁻¹

8.2 Resolution estimates [i](#)

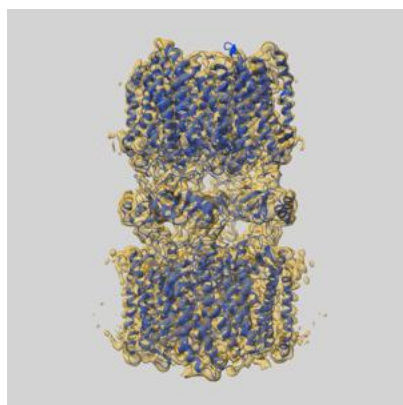
Resolution estimate (Å)	Estimation criterion (FSC cut-off)		
	0.143	0.5	Half-bit
Reported by author	3.37	-	-
Author-provided FSC curve	-	-	-
Unmasked-calculated*	3.71	4.06	3.74

*Resolution estimate based on FSC curve calculated by comparison of deposited half-maps. The value from deposited half-maps intersecting FSC 0.143 CUT-OFF 3.71 differs from the reported value 3.37 by more than 10 %

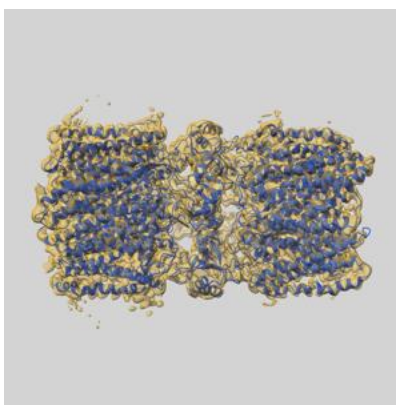
9 Map-model fit [i](#)

This section contains information regarding the fit between EMDB map EMD-48182 and PDB model 9ME1. Per-residue inclusion information can be found in section [3](#) on page [9](#).

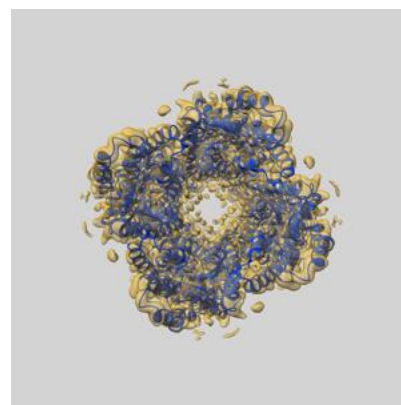
9.1 Map-model overlay [i](#)



X



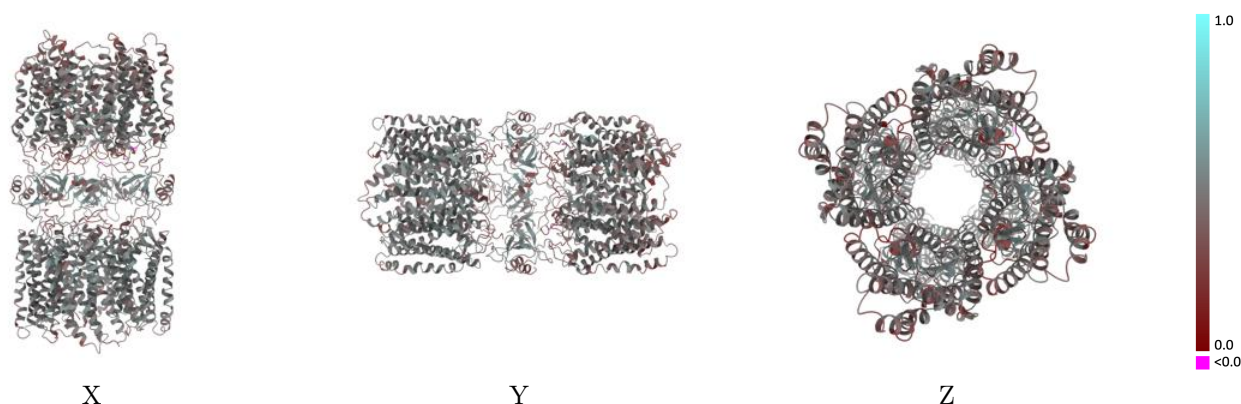
Y



Z

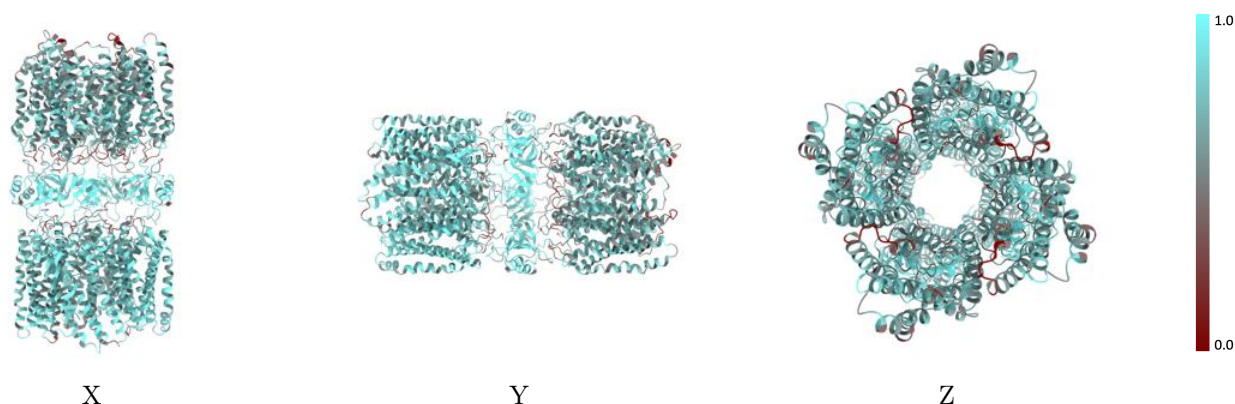
The images above show the 3D surface view of the map at the recommended contour level 0.08 at 50% transparency in yellow overlaid with a ribbon representation of the model coloured in blue. These images allow for the visual assessment of the quality of fit between the atomic model and the map.

9.2 Q-score mapped to coordinate model [i](#)



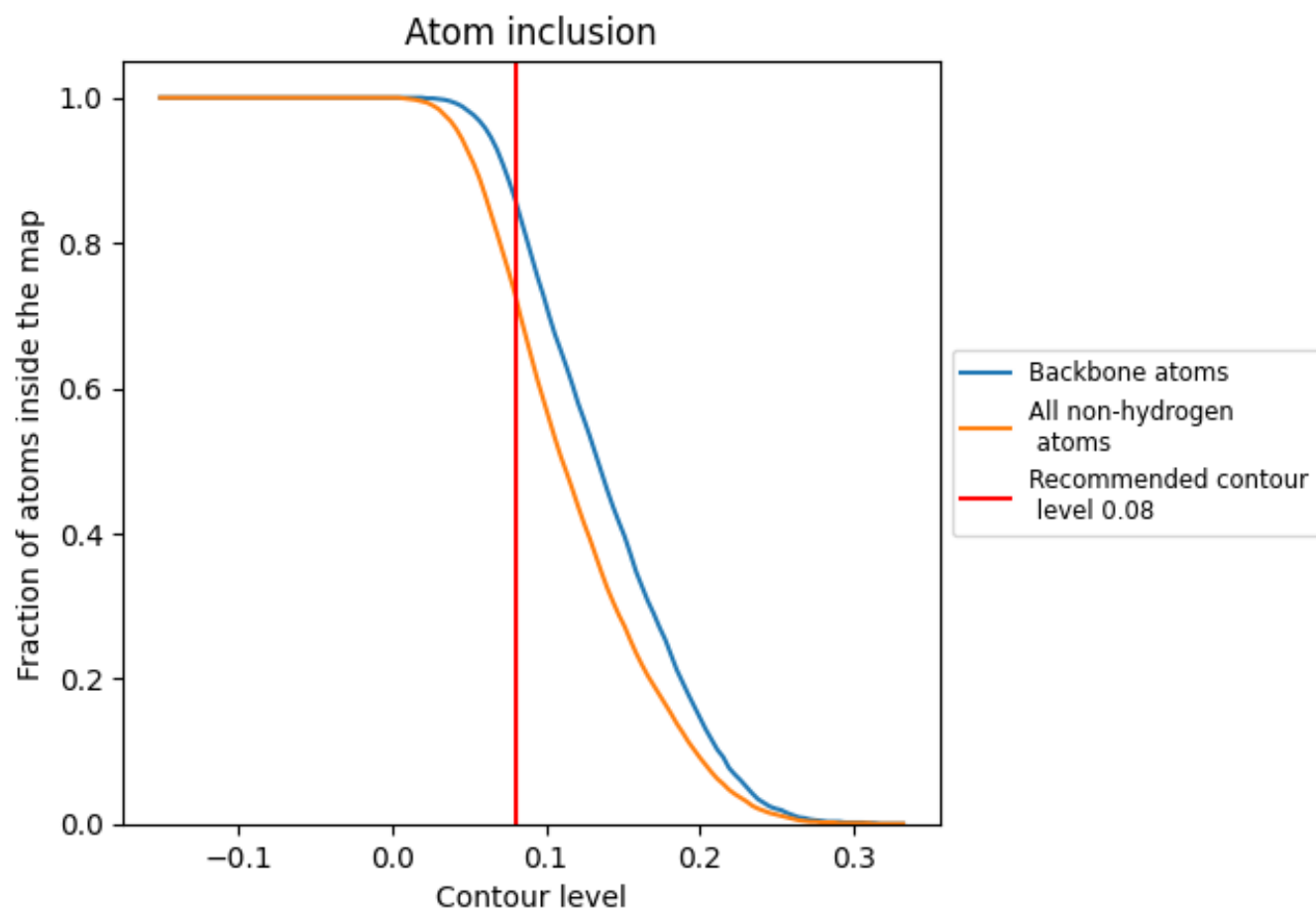
The images above show the model with each residue coloured according to its Q-score. This shows their resolvability in the map with higher Q-score values reflecting better resolvability. Please note: Q-score is calculating the resolvability of atoms, and thus high values are only expected at resolutions at which atoms can be resolved. Low Q-score values may therefore be expected for many entries.

9.3 Atom inclusion mapped to coordinate model [i](#)



The images above show the model with each residue coloured according to its atom inclusion. This shows to what extent they are inside the map at the recommended contour level (0.08).

9.4 Atom inclusion [i](#)



At the recommended contour level, 86% of all backbone atoms, 73% of all non-hydrogen atoms, are inside the map.

9.5 Map-model fit summary ⓘ

The table lists the average atom inclusion at the recommended contour level (0.08) and Q-score for the entire model and for each chain.

Chain	Atom inclusion	Q-score
All	<div><div></div></div> 0.7290	<div><div></div></div> 0.4420
A	<div><div></div></div> 0.7860	<div><div></div></div> 0.4690
B	<div><div></div></div> 0.7800	<div><div></div></div> 0.4600
C	<div><div></div></div> 0.7780	<div><div></div></div> 0.4580
D	<div><div></div></div> 0.7820	<div><div></div></div> 0.4610
E	<div><div></div></div> 0.6600	<div><div></div></div> 0.4250
F	<div><div></div></div> 0.8180	<div><div></div></div> 0.4450
G	<div><div></div></div> 0.8210	<div><div></div></div> 0.4540
H	<div><div></div></div> 0.8240	<div><div></div></div> 0.4590
I	<div><div></div></div> 0.6600	<div><div></div></div> 0.4210
J	<div><div></div></div> 0.7430	<div><div></div></div> 0.4370
K	<div><div></div></div> 0.6590	<div><div></div></div> 0.4240
L	<div><div></div></div> 0.6580	<div><div></div></div> 0.4210
M	<div><div></div></div> 0.7540	<div><div></div></div> 0.4260
N	<div><div></div></div> 0.8160	<div><div></div></div> 0.4540
O	<div><div></div></div> 0.7540	<div><div></div></div> 0.4270
P	<div><div></div></div> 0.7430	<div><div></div></div> 0.4280

1.0

0.0

<0.0