



Full wwPDB EM Validation Report ⓘ

Nov 18, 2025 – 04:55 PM JST

PDB ID : 9LQ8 / pdb_00009lq8
EMDB ID : EMD-63296
Title : Cryo-EM structure of CTR-bound type III-B CRISPR-Cas effector complex
Authors : Jin, X.; Duan, B.; Chen, Z.; Zhao, B.
Deposited on : 2025-01-28
Resolution : 2.85 Å(reported)

This is a Full wwPDB EM Validation Report for a publicly released PDB entry.

We welcome your comments at validation@mail.wwpdb.org

A user guide is available at

<https://www.wwpdb.org/validation/2017/EMValidationReportHelp>

with specific help available everywhere you see the ⓘ symbol.

The types of validation reports are described at

<http://www.wwpdb.org/validation/2017/FAQs#types>.

The following versions of software and data (see [references ⓘ](#)) were used in the production of this report:

EMDB validation analysis : 0.0.1.dev129
Mogul : 1.8.5 (274361), CSD as541be (2020)
MolProbity : 4-5-2 with Phenix2.0
buster-report : 1.1.7 (2018)
Percentile statistics : 20231227.v01 (using entries in the PDB archive December 27th 2023)
EM percentile statistics : 202505.v01 (Using data in the EMDB archive up until May 2025)
MapQ : 1.9.13
Ideal geometry (proteins) : Engh & Huber (2001)
Ideal geometry (DNA, RNA) : Parkinson et al. (1996)
Validation Pipeline (wwPDB-VP) : 2.46

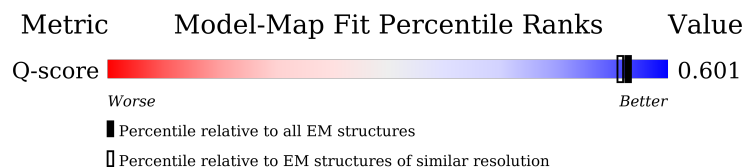
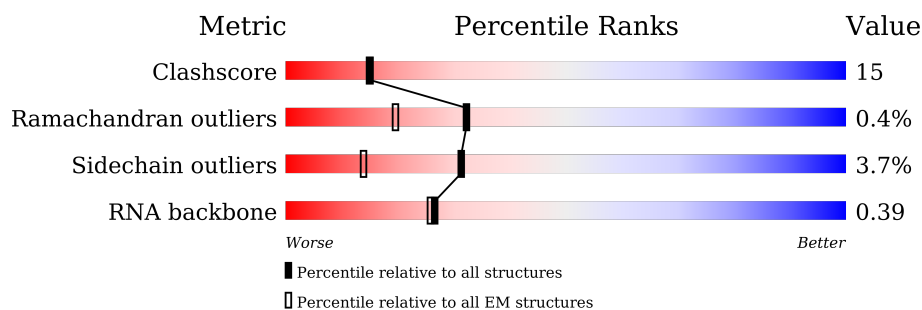
1 Overall quality at a glance

The following experimental techniques were used to determine the structure:

ELECTRON MICROSCOPY




The reported resolution of this entry is 2.85 Å.

Percentile scores (ranging between 0-100) for global validation metrics of the entry are shown in the following graphic. The table shows the number of entries on which the scores are based.



Metric	Whole archive (#Entries)	EM structures (#Entries)	Similar EM resolution (#Entries, resolution range(Å))
Clashscore	210492	15764	-
Ramachandran outliers	207382	16835	-
Sidechain outliers	206894	16415	-
RNA backbone	6643	2191	-
Q-score	-	25397	11965 (2.35 - 3.35)

The table below summarises the geometric issues observed across the polymeric chains and their fit to the map. The red, orange, yellow and green segments of the bar indicate the fraction of residues that contain outliers for ≥ 3 , 2, 1 and 0 types of geometric quality criteria respectively. A grey segment represents the fraction of residues that are not modelled. The numeric value for each fraction is indicated below the corresponding segment, with a dot representing fractions $\leq 5\%$. The upper red bar (where present) indicates the fraction of residues that have poor fit to the EM map (all-atom inclusion $< 40\%$). The numeric value is given above the bar.

Mol	Chain	Length	Quality of chain
1	A	469	
2	C	423	
3	D	279	

Continued on next page...

Continued from previous page...

Mol	Chain	Length	Quality of chain
3	E	279	 78%21%.
3	F	279	 76%23%.
4	G	136	 72%25%.
4	H	136	 64%33%.
5	I	314	 71%27%.
6	K	49	 35%20%14%31%.
7	J	49	 27%45%10%.16%.
8	B	600	 55%38%.6%.

2 Entry composition

There are 11 unique types of molecules in this entry. The entry contains 24511 atoms, of which 0 are hydrogens and 0 are deuteriums.

In the tables below, the AltConf column contains the number of residues with at least one atom in alternate conformation and the Trace column contains the number of residues modelled with at most 2 atoms.

- Molecule 1 is a protein called Cmr1.

Mol	Chain	Residues	Atoms					AltConf	Trace
1	A	469	Total	C	N	O	S	0	0
			3904	2514	664	713	13		

- Molecule 2 is a protein called CRISPR-associated protein Cmr3.

Mol	Chain	Residues	Atoms					AltConf	Trace
2	C	370	Total	C	N	O	S	0	0
			3043	1957	497	575	14		

There are 45 discrepancies between the modelled and reference sequences:

Chain	Residue	Modelled	Actual	Comment	Reference
C	1	MET	-	initiating methionine	UNP A0A9X9IKM4
C	2	SER	-	expression tag	UNP A0A9X9IKM4
C	3	HIS	-	expression tag	UNP A0A9X9IKM4
C	4	HIS	-	expression tag	UNP A0A9X9IKM4
C	5	HIS	-	expression tag	UNP A0A9X9IKM4
C	6	HIS	-	expression tag	UNP A0A9X9IKM4
C	7	HIS	-	expression tag	UNP A0A9X9IKM4
C	8	HIS	-	expression tag	UNP A0A9X9IKM4
C	9	HIS	-	expression tag	UNP A0A9X9IKM4
C	10	HIS	-	expression tag	UNP A0A9X9IKM4
C	11	ASP	-	expression tag	UNP A0A9X9IKM4
C	12	GLY	-	expression tag	UNP A0A9X9IKM4
C	13	LYS	-	expression tag	UNP A0A9X9IKM4
C	14	PRO	-	expression tag	UNP A0A9X9IKM4
C	15	ILE	-	expression tag	UNP A0A9X9IKM4
C	16	PRO	-	expression tag	UNP A0A9X9IKM4
C	17	ASN	-	expression tag	UNP A0A9X9IKM4
C	18	PRO	-	expression tag	UNP A0A9X9IKM4
C	19	LEU	-	expression tag	UNP A0A9X9IKM4
C	20	LEU	-	expression tag	UNP A0A9X9IKM4
C	21	GLY	-	expression tag	UNP A0A9X9IKM4

Continued on next page...

Continued from previous page...

Chain	Residue	Modelled	Actual	Comment	Reference
C	22	LEU	-	expression tag	UNP A0A9X9IKM4
C	23	ASP	-	expression tag	UNP A0A9X9IKM4
C	24	SER	-	expression tag	UNP A0A9X9IKM4
C	25	THR	-	expression tag	UNP A0A9X9IKM4
C	26	GLY	-	expression tag	UNP A0A9X9IKM4
C	27	SER	-	expression tag	UNP A0A9X9IKM4
C	28	ASP	-	expression tag	UNP A0A9X9IKM4
C	29	GLN	-	expression tag	UNP A0A9X9IKM4
C	30	THR	-	expression tag	UNP A0A9X9IKM4
C	31	GLU	-	expression tag	UNP A0A9X9IKM4
C	32	ASN	-	expression tag	UNP A0A9X9IKM4
C	33	SER	-	expression tag	UNP A0A9X9IKM4
C	34	GLY	-	expression tag	UNP A0A9X9IKM4
C	35	GLU	-	expression tag	UNP A0A9X9IKM4
C	36	ASN	-	expression tag	UNP A0A9X9IKM4
C	37	LEU	-	expression tag	UNP A0A9X9IKM4
C	38	TYR	-	expression tag	UNP A0A9X9IKM4
C	39	PHE	-	expression tag	UNP A0A9X9IKM4
C	40	GLN	-	expression tag	UNP A0A9X9IKM4
C	41	GLY	-	expression tag	UNP A0A9X9IKM4
C	42	ALA	-	expression tag	UNP A0A9X9IKM4
C	43	ASN	-	expression tag	UNP A0A9X9IKM4
C	44	ALA	-	expression tag	UNP A0A9X9IKM4
C	279	TYR	CYS	conflict	UNP A0A9X9IKM4

- Molecule 3 is a protein called Type III-B CRISPR module RAMP protein Cmr4.

Mol	Chain	Residues	Atoms					AltConf	Trace
3	D	279	Total	C	N	O	S	0	0
			2214	1410	372	420	12		
3	E	279	Total	C	N	O	S	0	0
			2214	1410	372	420	12		
3	F	279	Total	C	N	O	S	0	0
			2214	1410	372	420	12		

There are 3 discrepancies between the modelled and reference sequences:

Chain	Residue	Modelled	Actual	Comment	Reference
D	27	ALA	ASP	engineered mutation	UNP A0A9X9NER2
E	27	ALA	ASP	engineered mutation	UNP A0A9X9NER2
F	27	ALA	ASP	engineered mutation	UNP A0A9X9NER2

- Molecule 4 is a protein called CRISPR type III-B/RAMP module-associated protein Cmr5.

Mol	Chain	Residues	Atoms					AltConf	Trace
4	G	136	Total	C	N	O	S	0	0
			1071	681	180	205	5		
4	H	136	Total	C	N	O	S	0	0
			1071	681	180	205	5		

- Molecule 5 is a protein called RAMP superfamily protein.

Mol	Chain	Residues	Atoms					AltConf	Trace
5	I	314	Total	C	N	O	S	0	0
			2534	1630	414	482	8		

- Molecule 6 is a RNA chain called CTR.

Mol	Chain	Residues	Atoms					AltConf	Trace
6	K	34	Total	C	N	O	P	0	0
			721	324	131	232	34		

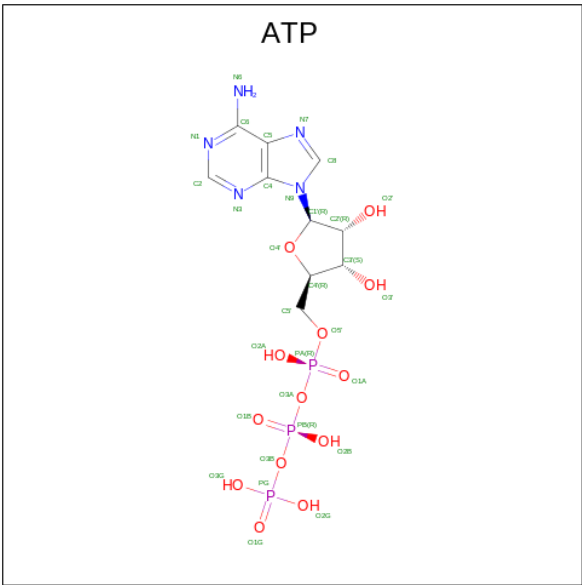
- Molecule 7 is a RNA chain called RNA (49-MER).

Mol	Chain	Residues	Atoms					AltConf	Trace
7	J	41	Total	C	N	O	P	0	0
			873	390	150	292	41		

- Molecule 8 is a protein called Type III-B CRISPR-associated protein Cas10/Cmr2.

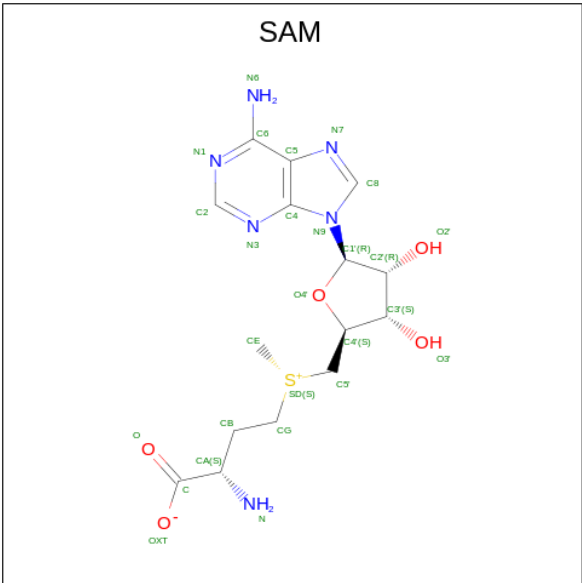
Mol	Chain	Residues	Atoms					AltConf	Trace
8	B	566	Total	C	N	O	S	0	0
			4593	2956	752	861	24		

- Molecule 9 is ADENOSINE-5'-TRIPHOSPHATE (CCD ID: ATP) (formula: C₁₀H₁₆N₅O₁₃P₃) (labeled as "Ligand of Interest" by depositor).



Mol	Chain	Residues	Atoms					AltConf
9	B	1	Total	C	N	O	P	0
			31	10	5	13	3	

- Molecule 10 is S-ADENOSYLMETHIONINE (CCD ID: SAM) (formula: C₁₅H₂₂N₆O₅S) (labeled as "Ligand of Interest" by depositor).



Mol	Chain	Residues	Atoms					AltConf
10	B	1	Total	C	N	O	S	0
			27	15	6	5	1	

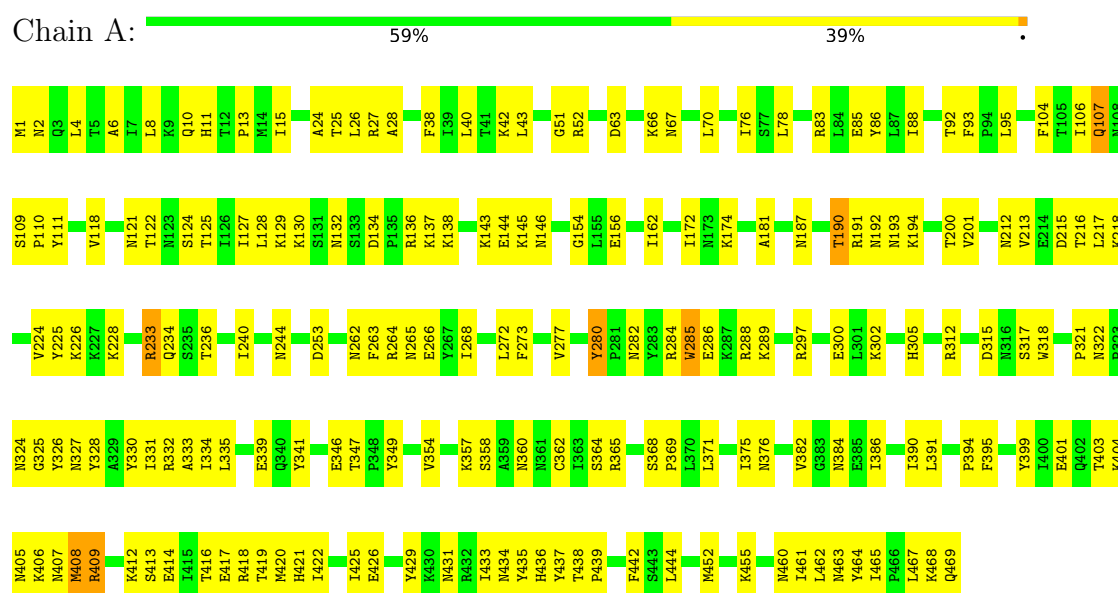
- Molecule 11 is MANGANESE (II) ION (CCD ID: MN) (formula: Mn) (labeled as "Ligand of Interest" by depositor).

Mol	Chain	Residues	Atoms		AltConf
11	B	1	Total 1	Mn 1	0

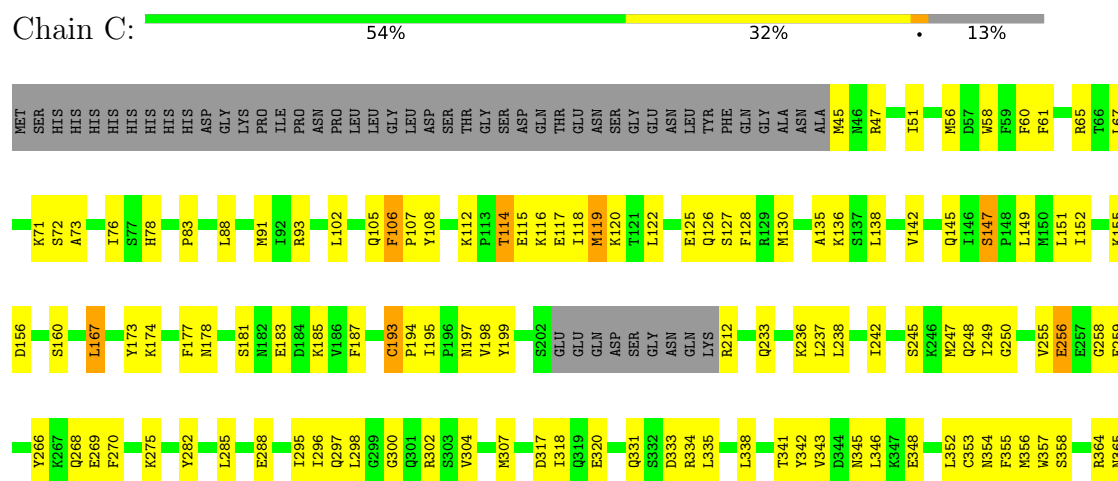
3 Residue-property plots

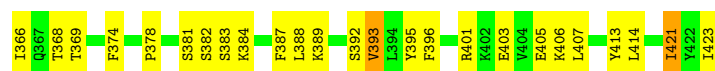
These plots are drawn for all protein, RNA, DNA and oligosaccharide chains in the entry. The first graphic for a chain summarises the proportions of the various outlier classes displayed in the second graphic. The second graphic shows the sequence view annotated by issues in geometry and atom inclusion in map density. Residues are color-coded according to the number of geometric quality criteria for which they contain at least one outlier: green = 0, yellow = 1, orange = 2 and red = 3 or more. A red diamond above a residue indicates a poor fit to the EM map for this residue (all-atom inclusion < 40%). Stretches of 2 or more consecutive residues without any outlier are shown as a green connector. Residues present in the sample, but not in the model, are shown in grey.

• Molecule 1: Cmr1



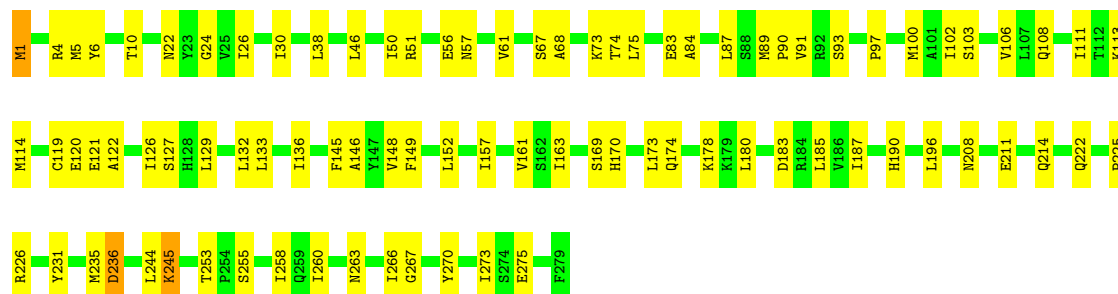
• Molecule 2: CRISPR-associated protein Cmr3





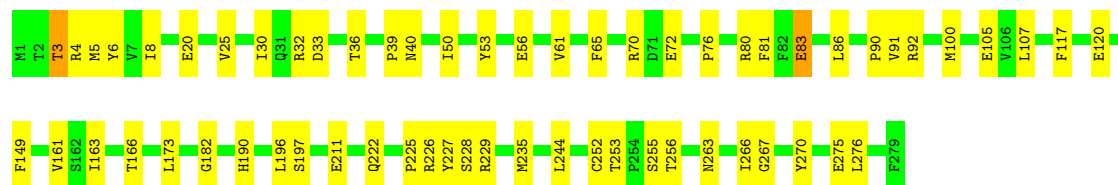
• Molecule 3: Type III-B CRISPR module RAMP protein Cmr4

Chain D: 69% 30%



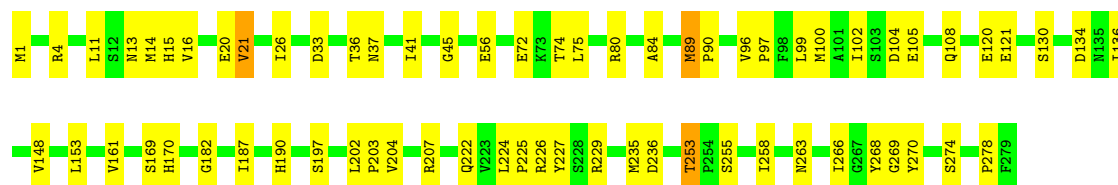
• Molecule 3: Type III-B CRISPR module RAMP protein Cmr4

Chain E: 78% 21%



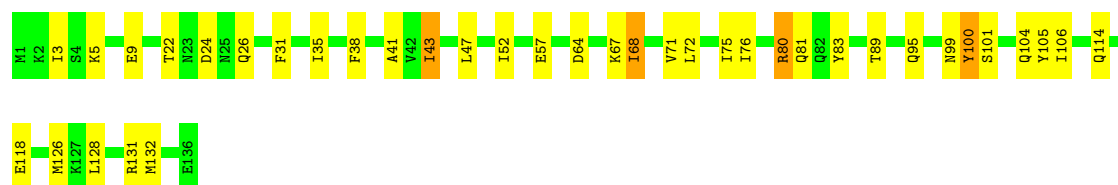
• Molecule 3: Type III-B CRISPR module RAMP protein Cmr4

Chain F: 76% 23%



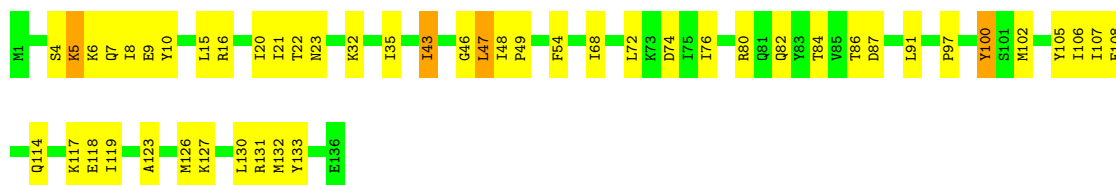
• Molecule 4: CRISPR type III-B/RAMP module-associated protein Cmr5

Chain G: 72% 25%



• Molecule 4: CRISPR type III-B/RAMP module-associated protein Cmr5

Chain H: 64% 33%



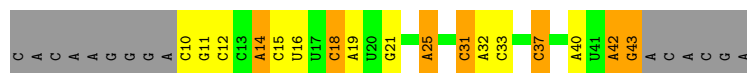
• Molecule 5: RAMP superfamily protein

Chain I: 71% 27% .



• Molecule 6: CTR

Chain K: 35% 20% 14% 31%



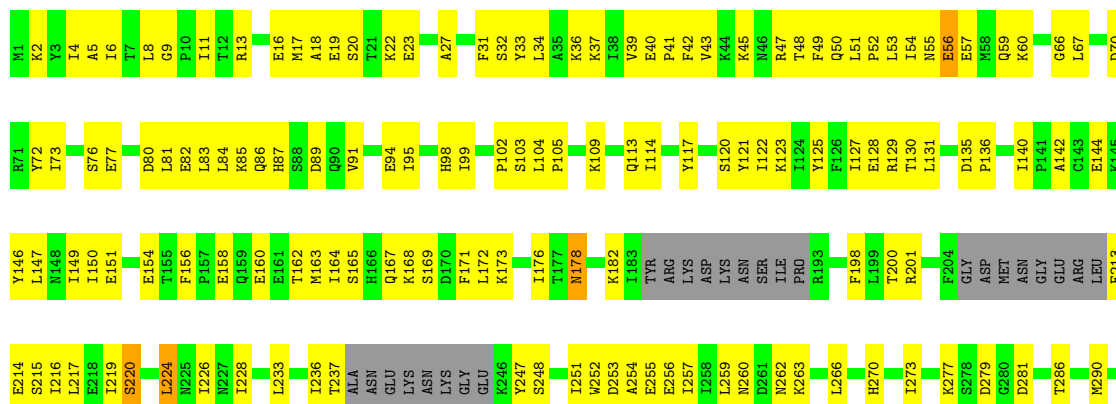
• Molecule 7: RNA (49-MER)

Chain J: 27% 45% 10% 16%



• Molecule 8: Type III-B CRISPR-associated protein Cas10/Cmr2

Chain B: 55% 38% 6%





4 Experimental information

Property	Value	Source
EM reconstruction method	SINGLE PARTICLE	Depositor
Imposed symmetry	POINT, Not provided	
Number of particles used	82768	Depositor
Resolution determination method	FSC 0.143 CUT-OFF	Depositor
CTF correction method	PHASE FLIPPING AND AMPLITUDE CORRECTION	Depositor
Microscope	TFS KRIOS	Depositor
Voltage (kV)	300	Depositor
Electron dose ($e^-/\text{\AA}^2$)	50	Depositor
Minimum defocus (nm)	1000	Depositor
Maximum defocus (nm)	3000	Depositor
Magnification	Not provided	
Image detector	TFS FALCON 4i (4k x 4k)	Depositor
Maximum map value	38.241	Depositor
Minimum map value	-0.144	Depositor
Average map value	-0.006	Depositor
Map value standard deviation	0.572	Depositor
Recommended contour level	0.1	Depositor
Map size (\AA)	335.52, 335.52, 335.52	wwPDB
Map dimensions	360, 360, 360	wwPDB
Map angles ($^\circ$)	90.0, 90.0, 90.0	wwPDB
Pixel spacing (\AA)	0.932, 0.932, 0.932	Depositor

5 Model quality

5.1 Standard geometry

Bond lengths and bond angles in the following residue types are not validated in this section: MN, SAM, ATP

The Z score for a bond length (or angle) is the number of standard deviations the observed value is removed from the expected value. A bond length (or angle) with $|Z| > 5$ is considered an outlier worth inspection. RMSZ is the root-mean-square of all Z scores of the bond lengths (or angles).

Mol	Chain	Bond lengths		Bond angles	
		RMSZ	# Z >5	RMSZ	# Z >5
1	A	0.17	0/3995	0.49	1/5381 (0.0%)
2	C	0.17	0/3113	0.48	0/4192
3	D	0.14	0/2258	0.33	0/3058
3	E	0.12	0/2258	0.28	0/3058
3	F	0.13	0/2258	0.30	0/3058
4	G	0.13	0/1086	0.32	0/1466
4	H	0.16	0/1086	0.38	0/1466
5	I	0.15	0/2593	0.36	0/3500
6	K	0.14	0/806	0.32	0/1252
7	J	0.14	0/975	0.72	5/1515 (0.3%)
8	B	0.19	0/4686	0.53	1/6323 (0.0%)
All	All	0.16	0/25114	0.44	7/34269 (0.0%)

Chiral center outliers are detected by calculating the chiral volume of a chiral center and verifying if the center is modelled as a planar moiety or with the opposite hand. A planarity outlier is detected by checking planarity of atoms in a peptide group, atoms in a mainchain group or atoms of a sidechain that are expected to be planar.

Mol	Chain	#Chirality outliers	#Planarity outliers
5	I	0	1

There are no bond length outliers.

All (7) bond angle outliers are listed below:

Mol	Chain	Res	Type	Atoms	Z	Observed(°)	Ideal(°)
7	J	9	A	OP1-P-OP2	-13.54	78.97	119.60
7	J	8	C	OP2-P-O3'	-12.21	71.38	108.00
7	J	9	A	O5'-P-OP1	-10.01	77.96	108.00
7	J	8	C	OP1-P-O3'	9.36	136.08	108.00
7	J	9	A	O5'-P-OP2	7.33	129.98	108.00

Continued on next page...

Continued from previous page...

Mol	Chain	Res	Type	Atoms	Z	Observed(°)	Ideal(°)
8	B	220	SER	N-CA-C	-6.29	106.82	114.75
1	A	408	MET	CA-CB-CG	5.83	125.77	114.10

There are no chirality outliers.

All (1) planarity outliers are listed below:

Mol	Chain	Res	Type	Group
5	I	81	TYR	Peptide

5.2 Too-close contacts

In the following table, the Non-H and H(model) columns list the number of non-hydrogen atoms and hydrogen atoms in the chain respectively. The H(added) column lists the number of hydrogen atoms added and optimized by MolProbity. The Clashes column lists the number of clashes within the asymmetric unit, whereas Symm-Clashes lists symmetry-related clashes.

Mol	Chain	Non-H	H(model)	H(added)	Clashes	Symm-Clashes
1	A	3904	0	3924	143	0
2	C	3043	0	3006	116	0
3	D	2214	0	2218	54	0
3	E	2214	0	2218	37	0
3	F	2214	0	2218	43	0
4	G	1071	0	1091	24	0
4	H	1071	0	1091	35	0
5	I	2534	0	2529	60	0
6	K	721	0	368	15	0
7	J	873	0	437	32	0
8	B	4593	0	4595	207	0
9	B	31	0	12	0	0
10	B	27	0	21	4	0
11	B	1	0	0	0	0
All	All	24511	0	23728	716	0

The all-atom clashscore is defined as the number of clashes found per 1000 atoms (including hydrogen atoms). The all-atom clashscore for this structure is 15.

All (716) close contacts within the same asymmetric unit are listed below, sorted by their clash magnitude.

Atom-1	Atom-2	Interatomic distance (Å)	Clash overlap (Å)
8:B:83:LEU:HA	8:B:86:GLN:HE21	1.34	0.90

Continued on next page...

Continued from previous page...

Atom-1	Atom-2	Interatomic distance (Å)	Clash overlap (Å)
8:B:182:LYS:H	8:B:182:LYS:HE2	1.38	0.85
8:B:123:LYS:HB2	8:B:125:TYR:HE2	1.45	0.81
8:B:404:GLU:OE1	8:B:410:ASN:ND2	2.17	0.78
3:D:30:ILE:H	3:D:222:GLN:HE21	1.31	0.78
8:B:5:ALA:HB3	8:B:127:ILE:HB	1.65	0.78
8:B:228:ILE:HG13	8:B:259:LEU:HD11	1.66	0.77
2:C:65:ARG:HE	2:C:71:LYS:HZ3	1.32	0.75
1:A:327:ASN:HD21	1:A:433:ILE:HD12	1.54	0.73
1:A:408:MET:O	1:A:409:ARG:NH1	2.21	0.73
4:H:47:LEU:HD21	4:H:119:ILE:HG21	1.70	0.73
4:H:131:ARG:NH2	6:K:25:A:OP1	2.21	0.72
8:B:160:GLU:HA	8:B:169:SER:HB3	1.71	0.72
4:G:131:ARG:NH2	6:K:31:C:OP1	2.22	0.72
8:B:173:LYS:HA	8:B:173:LYS:HE2	1.72	0.71
2:C:259:GLU:OE1	2:C:259:GLU:N	2.16	0.71
1:A:360:ASN:ND2	1:A:362:CYS:SG	2.64	0.71
8:B:94:GLU:O	8:B:98:HIS:ND1	2.23	0.71
8:B:158:GLU:N	8:B:158:GLU:OE2	2.24	0.70
6:K:10:C:H2'	6:K:11:G:H8	1.56	0.70
8:B:224:LEU:HB2	8:B:226:ILE:HG13	1.74	0.70
3:E:182:GLY:HA2	3:E:229:ARG:HH21	1.54	0.70
8:B:117:TYR:HE2	8:B:171:PHE:H	1.36	0.70
8:B:123:LYS:HB2	8:B:125:TYR:CE2	2.27	0.70
1:A:429:TYR:H	1:A:434:ASN:HD22	1.37	0.69
2:C:112:LYS:N	2:C:112:LYS:HE2	2.07	0.69
1:A:431:ASN:O	1:A:433:ILE:N	2.22	0.69
6:K:43:G:N1	8:B:256:GLU:OE2	2.25	0.69
8:B:51:LEU:HG	8:B:73:ILE:HD12	1.73	0.69
2:C:259:GLU:H	2:C:259:GLU:CD	1.99	0.69
7:J:16:A:H2'	7:J:17:G:H8	1.57	0.68
2:C:128:PHE:O	2:C:365:ASN:ND2	2.26	0.68
8:B:277:LYS:HG2	8:B:403:LEU:HD22	1.75	0.68
4:H:5:LYS:NZ	4:H:9:GLU:OE2	2.26	0.68
3:D:263:ASN:HB3	3:D:266:ILE:HG12	1.74	0.68
2:C:197:ASN:ND2	8:B:146:TYR:OH	2.27	0.67
2:C:304:VAL:HG21	3:D:235:MET:HE1	1.75	0.67
8:B:83:LEU:HA	8:B:86:GLN:NE2	2.08	0.67
1:A:15:ILE:HB	1:A:190:THR:HG23	1.77	0.67
1:A:404:LYS:HB2	1:A:412:LYS:HD2	1.77	0.66
5:I:194:GLU:OE2	5:I:194:GLU:N	2.28	0.66
3:D:253:THR:HG22	3:D:255:SER:H	1.61	0.65

Continued on next page...

Continued from previous page...

Atom-1	Atom-2	Interatomic distance (Å)	Clash overlap (Å)
8:B:127:ILE:HD11	8:B:150:ILE:HG12	1.77	0.65
8:B:178:ASN:OD1	8:B:178:ASN:N	2.25	0.65
8:B:374:ARG:NH1	8:B:374:ARG:HB2	2.12	0.65
2:C:136:LYS:HE2	2:C:136:LYS:N	2.12	0.65
2:C:352:LEU:HD13	2:C:403:GLU:HG2	1.78	0.65
4:H:97:PRO:HB2	4:H:100:TYR:HB2	1.78	0.65
3:D:67:SER:HB2	3:D:75:LEU:H	1.62	0.64
2:C:105:GLN:N	2:C:105:GLN:OE1	2.31	0.64
2:C:93:ARG:NH1	2:C:126:GLN:O	2.26	0.64
8:B:165:SER:OG	8:B:167:GLN:OE1	2.16	0.64
1:A:233:ARG:HE	1:A:234:GLN:H	1.44	0.64
8:B:598:LYS:HE2	8:B:598:LYS:HA	1.78	0.64
2:C:275:LYS:HE3	2:C:275:LYS:HA	1.80	0.64
1:A:357:LYS:HE2	1:A:357:LYS:HA	1.79	0.64
6:K:31:C:H2'	6:K:32:A:H8	1.63	0.64
2:C:338:LEU:HB2	2:C:421:ILE:HG22	1.80	0.63
3:F:4:ARG:HD3	3:F:120:GLU:HG3	1.78	0.63
8:B:22:LYS:HE3	8:B:214:GLU:HB2	1.79	0.63
8:B:379:LEU:O	8:B:453:LYS:NZ	2.27	0.63
8:B:45:LYS:HZ1	8:B:47:ARG:HH21	1.47	0.63
8:B:215:SER:OG	8:B:216:ILE:N	2.28	0.63
1:A:394:PRO:HA	1:A:437:TYR:H	1.63	0.62
3:D:22:ASN:ND2	3:D:26:ILE:O	2.30	0.62
1:A:212:ASN:ND2	1:A:215:ASP:OD1	2.31	0.62
8:B:136:PRO:O	8:B:140:ILE:HG12	2.00	0.62
2:C:67:LEU:HD11	2:C:268:GLN:HG2	1.81	0.62
3:D:73:LYS:HA	3:D:73:LYS:HE2	1.82	0.62
2:C:233:GLN:N	2:C:233:GLN:OE1	2.33	0.62
8:B:82:GLU:HA	8:B:85:LYS:HG2	1.81	0.62
8:B:439:LEU:HD23	8:B:447:TYR:HD2	1.65	0.62
1:A:347:THR:OG1	1:A:349:TYR:HB3	2.00	0.62
1:A:386:ILE:HD13	1:A:442:PHE:HD2	1.65	0.62
2:C:256:GLU:HB2	2:C:259:GLU:CD	2.25	0.61
3:F:121:GLU:HG2	3:F:278:PRO:HA	1.81	0.61
8:B:120:SER:OG	8:B:156:PHE:O	2.18	0.61
8:B:449:THR:HG21	8:B:583:THR:HA	1.81	0.61
3:D:161:VAL:HG23	3:D:163:ILE:HG12	1.81	0.61
2:C:368:THR:OG1	7:J:2:U:OP2	2.17	0.61
8:B:103:SER:O	8:B:182:LYS:NZ	2.34	0.61
8:B:165:SER:O	8:B:168:LYS:NZ	2.33	0.61
4:H:4:SER:OG	4:H:7:GLN:OE1	2.17	0.61

Continued on next page...

Continued from previous page...

Atom-1	Atom-2	Interatomic distance (Å)	Clash overlap (Å)
8:B:409:ASP:OD2	8:B:554:ARG:NH1	2.34	0.61
1:A:27:ARG:NH2	5:I:308:TYR:OH	2.34	0.61
1:A:327:ASN:ND2	1:A:433:ILE:HD12	2.14	0.61
3:D:211:GLU:OE1	3:E:70:ARG:NE	2.28	0.61
8:B:226:ILE:HD13	8:B:228:ILE:HD11	1.81	0.61
1:A:386:ILE:HG23	1:A:444:LEU:HB2	1.81	0.61
8:B:279:ASP:HB3	8:B:408:LYS:HE2	1.83	0.60
4:H:114:GLN:NE2	4:H:118:GLU:OE2	2.34	0.60
3:D:51:ARG:HH12	3:D:68:ALA:HA	1.66	0.60
3:E:91:VAL:HG11	3:E:196:LEU:HD13	1.83	0.60
5:I:82:PRO:HB2	5:I:308:TYR:HA	1.82	0.60
1:A:365:ARG:HD2	5:I:229:PRO:HD3	1.84	0.59
4:G:132:MET:HE2	8:B:498:ILE:HG23	1.84	0.59
3:E:253:THR:HG22	3:E:255:SER:H	1.67	0.59
3:E:5:MET:HE2	3:E:276:LEU:HD13	1.85	0.59
3:F:72:GLU:OE2	3:F:72:GLU:N	2.31	0.59
1:A:284:ARG:HG3	1:A:326:TYR:HD2	1.67	0.59
1:A:335:LEU:HD23	1:A:369:PRO:HD2	1.84	0.59
1:A:401:GLU:HB2	1:A:420:MET:HE2	1.84	0.59
2:C:181:SER:OG	2:C:183:GLU:OE2	2.17	0.59
2:C:365:ASN:O	2:C:381:SER:N	2.36	0.59
1:A:226:LYS:O	1:A:465:ILE:N	2.31	0.59
3:E:40:ASN:ND2	3:E:83:GLU:OE1	2.35	0.59
6:K:37:C:OP1	8:B:441:LYS:NZ	2.31	0.59
1:A:395:PHE:H	1:A:436:HIS:HB3	1.68	0.58
2:C:120:LYS:HA	2:C:120:LYS:HE2	1.85	0.58
3:D:100:MET:HB3	3:D:185:LEU:HD12	1.84	0.58
4:H:100:TYR:OH	4:H:108:GLU:OE1	2.16	0.58
5:I:127:MET:HG3	5:I:298:ILE:HD13	1.86	0.58
6:K:10:C:H2'	6:K:11:G:C8	2.37	0.58
1:A:273:PHE:O	1:A:277:VAL:HG22	2.02	0.58
8:B:513:LEU:HD11	8:B:540:LEU:HD23	1.85	0.58
1:A:26:LEU:HB3	1:A:76:ILE:HG21	1.85	0.58
2:C:177:PHE:HZ	2:C:355:PHE:HB2	1.69	0.58
2:C:357:TRP:HB3	2:C:393:VAL:HG12	1.85	0.58
8:B:259:LEU:HA	8:B:262:ASN:HB2	1.83	0.58
8:B:347:VAL:HG21	8:B:383:ILE:HD11	1.86	0.58
4:H:15:LEU:HB3	4:H:21:ILE:HD13	1.86	0.58
1:A:127:ILE:HD12	1:A:143:LYS:HD2	1.85	0.58
1:A:1:MET:N	1:A:1:MET:HE3	2.20	0.57
3:F:26:ILE:HD11	4:H:43:ILE:HD13	1.86	0.57

Continued on next page...

Continued from previous page...

Atom-1	Atom-2	Interatomic distance (Å)	Clash overlap (Å)
8:B:70:ASP:OD1	8:B:70:ASP:N	2.32	0.57
3:D:258:ILE:HD13	3:D:273:ILE:HD12	1.86	0.57
3:E:4:ARG:NH1	3:E:120:GLU:OE2	2.38	0.57
3:F:13:ASN:O	3:F:269:GLY:N	2.37	0.57
7:J:16:A:H2'	7:J:17:G:C8	2.38	0.57
1:A:111:TYR:HA	1:A:191:ARG:HD2	1.87	0.57
1:A:224:VAL:HG22	1:A:382:VAL:HG12	1.87	0.57
1:A:63:ASP:OD2	1:A:67:ASN:N	2.32	0.56
1:A:272:LEU:HD22	1:A:335:LEU:HD12	1.87	0.56
2:C:382:SER:O	8:B:163:MET:HE1	2.05	0.56
3:D:97:PRO:HB3	3:E:36:THR:HG22	1.87	0.56
8:B:104:LEU:HD23	8:B:104:LEU:H	1.71	0.56
4:G:31:PHE:O	4:G:35:ILE:HG12	2.05	0.56
8:B:160:GLU:N	8:B:160:GLU:OE1	2.38	0.56
1:A:262:ASN:ND2	7:J:41:U:OP2	2.39	0.56
1:A:405:ASN:OD1	1:A:413:SER:OG	2.22	0.56
8:B:45:LYS:NZ	8:B:47:ARG:HH21	2.04	0.56
8:B:82:GLU:O	8:B:86:GLN:HG3	2.05	0.56
2:C:173:TYR:HB3	2:C:198:VAL:HG13	1.88	0.56
3:F:21:VAL:HG21	4:G:41:ALA:HA	1.87	0.56
3:F:1:MET:N	3:F:120:GLU:OE1	2.34	0.56
3:E:76:PRO:HB3	7:J:11:U:H4'	1.87	0.56
8:B:226:ILE:O	8:B:226:ILE:HD12	2.06	0.55
4:H:35:ILE:HD12	4:H:130:LEU:HD22	1.87	0.55
4:H:80:ARG:NH1	4:H:105:TYR:OH	2.36	0.55
8:B:495:HIS:ND1	8:B:516:TYR:OH	2.38	0.55
2:C:58:TRP:HB3	2:C:270:PHE:HB3	1.88	0.55
1:A:300:GLU:HG2	1:A:346:GLU:HB2	1.88	0.55
2:C:91:MET:HE2	2:C:296:ILE:HD13	1.89	0.55
2:C:341:THR:HB	2:C:388:LEU:HD12	1.87	0.55
5:I:1:MET:N	5:I:55:TYR:OH	2.38	0.55
7:J:33:A:O2'	7:J:34:A:OP2	2.23	0.55
4:G:22:THR:OG1	4:G:24:ASP:O	2.25	0.55
8:B:217:LEU:HD12	8:B:259:LEU:HD13	1.88	0.55
1:A:330:TYR:CD2	1:A:333:ALA:HB2	2.42	0.55
2:C:155:LYS:H	2:C:155:LYS:HD3	1.72	0.55
5:I:220:PRO:HB3	7:J:31:U:H1'	1.88	0.55
8:B:13:ARG:NH2	8:B:154:GLU:OE2	2.39	0.55
3:F:56:GLU:CD	3:F:56:GLU:H	2.15	0.55
6:K:32:A:N6	7:J:19:G:O6	2.40	0.55
8:B:286:THR:O	8:B:290:MET:HG3	2.05	0.55

Continued on next page...

Continued from previous page...

Atom-1	Atom-2	Interatomic distance (Å)	Clash overlap (Å)
2:C:151:LEU:HD21	2:C:242:ILE:HG21	1.89	0.55
3:F:102:ILE:HG23	3:F:187:ILE:HG23	1.88	0.55
4:H:20:ILE:HG22	4:H:21:ILE:HD12	1.89	0.54
5:I:83:GLY:HA3	5:I:236:LYS:HD2	1.88	0.54
8:B:98:HIS:HB3	8:B:198:PHE:CD1	2.42	0.54
3:D:24:GLY:O	8:B:445:GLN:NE2	2.40	0.54
4:G:71:VAL:HB	4:G:126:MET:HE3	1.89	0.54
4:G:81:GLN:OE1	4:G:95:GLN:NE2	2.41	0.54
1:A:110:PRO:HB3	1:A:194:LYS:HD2	1.90	0.54
1:A:130:LYS:HA	1:A:130:LYS:HE2	1.90	0.54
2:C:105:GLN:O	2:C:106:PHE:HB3	2.07	0.54
3:D:89:MET:HG2	3:D:90:PRO:HD2	1.89	0.54
5:I:144:GLU:O	5:I:148:GLU:HG2	2.07	0.54
8:B:220:SER:OG	8:B:270:HIS:O	2.25	0.54
8:B:547:ASN:HD21	8:B:579:ASP:HB3	1.72	0.54
4:G:76:ILE:O	4:G:80:ARG:HG2	2.07	0.54
2:C:117:GLU:OE1	2:C:117:GLU:N	2.30	0.54
3:F:100:MET:HG3	3:F:182:GLY:HA3	1.90	0.54
8:B:20:SER:HB2	8:B:23:GLU:HG2	1.89	0.54
5:I:82:PRO:HG2	5:I:307:GLY:O	2.08	0.54
8:B:33:TYR:O	8:B:37:LYS:HG2	2.08	0.54
1:A:460:ASN:HD22	1:A:461:ILE:N	2.05	0.54
4:H:16:ARG:NH2	4:H:133:TYR:OH	2.40	0.54
1:A:330:TYR:HB3	1:A:438:THR:HG22	1.90	0.54
2:C:346:LEU:HD22	8:B:156:PHE:HB2	1.90	0.53
3:D:5:MET:HE3	3:D:231:TYR:HB2	1.89	0.53
3:D:236:ASP:HB3	3:D:244:LEU:HD21	1.90	0.53
6:K:31:C:H2'	6:K:32:A:C8	2.42	0.53
8:B:308:ASN:ND2	8:B:326:GLY:O	2.41	0.53
8:B:405:MET:HE3	8:B:411:LEU:HD13	1.90	0.53
1:A:24:ALA:HA	5:I:81:TYR:CE1	2.43	0.53
1:A:121:ASN:OD1	1:A:122:THR:N	2.41	0.53
8:B:198:PHE:HA	8:B:201:ARG:HG2	1.89	0.53
1:A:138:LYS:H	1:A:138:LYS:HD2	1.72	0.53
1:A:52:ARG:NH1	1:A:67:ASN:O	2.42	0.53
1:A:365:ARG:NH2	7:J:34:A:N3	2.57	0.53
1:A:403:THR:N	1:A:416:THR:OG1	2.41	0.53
2:C:88:LEU:HD23	2:C:298:LEU:HD11	1.88	0.53
3:D:145:PHE:HE2	3:D:187:ILE:HG22	1.71	0.53
8:B:144:GLU:HA	8:B:147:LEU:HG	1.90	0.53
1:A:10:GLN:HE21	1:A:13:PRO:HA	1.74	0.53

Continued on next page...

Continued from previous page...

Atom-1	Atom-2	Interatomic distance (Å)	Clash overlap (Å)
1:A:288:ARG:HH22	1:A:321:PRO:HG3	1.73	0.53
3:E:50:ILE:HD12	3:E:81:PHE:HE2	1.74	0.53
8:B:162:THR:HG22	8:B:168:LYS:HB2	1.89	0.53
1:A:6:ALA:HB3	1:A:162:ILE:HG23	1.90	0.53
1:A:213:VAL:HG11	1:A:375:ILE:HG21	1.90	0.53
2:C:45:MET:HE1	2:C:47:ARG:HG3	1.90	0.53
4:H:5:LYS:HA	4:H:8:ILE:HD12	1.90	0.53
8:B:55:ASN:ND2	8:B:56:GLU:OE1	2.42	0.53
3:E:4:ARG:HG2	3:E:120:GLU:HG3	1.91	0.53
8:B:49:PHE:HD1	8:B:50:GLN:H	1.57	0.53
8:B:233:LEU:O	8:B:237:THR:OG1	2.22	0.53
1:A:305:HIS:ND1	7:J:41:U:H4'	2.24	0.53
2:C:120:LYS:HE3	2:C:125:GLU:CD	2.33	0.53
1:A:280:TYR:O	1:A:282:ASN:N	2.40	0.53
2:C:353:CYS:HA	2:C:396:PHE:HA	1.91	0.53
8:B:19:GLU:N	8:B:23:GLU:HG3	2.24	0.53
2:C:47:ARG:CZ	2:C:288:GLU:HB2	2.39	0.52
8:B:257:ILE:HA	8:B:260:ASN:HB2	1.90	0.52
8:B:483:LYS:HB3	8:B:529:TYR:HE1	1.74	0.52
1:A:286:GLU:HA	1:A:289:LYS:HB3	1.90	0.52
2:C:346:LEU:HD11	2:C:356:MET:HE1	1.91	0.52
8:B:447:TYR:HB3	8:B:586:THR:HG23	1.91	0.52
1:A:83:ARG:NH2	1:A:85:GLU:OE2	2.37	0.52
1:A:417:GLU:OE2	1:A:417:GLU:N	2.43	0.52
2:C:364:ARG:HB3	7:J:3:U:C2	2.45	0.52
3:E:30:ILE:HG23	3:E:222:GLN:HG3	1.90	0.52
4:G:80:ARG:NH2	4:G:105:TYR:OH	2.42	0.52
2:C:401:ARG:O	2:C:405:GLU:HG2	2.10	0.52
1:A:118:VAL:HG12	1:A:118:VAL:O	2.09	0.52
4:H:35:ILE:HD13	4:H:126:MET:HB3	1.90	0.52
8:B:80:ASP:OD2	8:B:80:ASP:N	2.37	0.52
8:B:113:GLN:OE1	8:B:171:PHE:HE2	1.93	0.52
8:B:331:LEU:HD11	8:B:396:LEU:HD11	1.92	0.52
2:C:105:GLN:O	2:C:107:PRO:HD3	2.10	0.52
2:C:249:ILE:HG21	7:J:9:A:C8	2.45	0.52
2:C:368:THR:HB	2:C:374:PHE:HE1	1.75	0.52
3:D:214:GLN:NE2	3:F:74:THR:O	2.40	0.52
4:G:52:ILE:HG12	4:H:132:MET:HG3	1.92	0.52
8:B:374:ARG:HB2	8:B:374:ARG:HH11	1.74	0.52
1:A:129:LYS:HB2	1:A:129:LYS:NZ	2.24	0.52
1:A:143:LYS:HB2	1:A:146:ASN:HB2	1.91	0.52

Continued on next page...

Continued from previous page...

Atom-1	Atom-2	Interatomic distance (Å)	Clash overlap (Å)
3:E:39:PRO:HG2	3:E:86:LEU:HD22	1.92	0.52
8:B:228:ILE:HG22	8:B:255:GLU:HG2	1.92	0.52
1:A:88:ILE:HD11	1:A:106:ILE:HD12	1.92	0.51
8:B:43:VAL:HG21	8:B:54:ILE:HD13	1.91	0.51
1:A:8:LEU:HD22	1:A:162:ILE:HG22	1.92	0.51
2:C:114:THR:HA	2:C:117:GLU:OE2	2.10	0.51
3:F:100:MET:HE3	3:F:229:ARG:HE	1.75	0.51
4:H:102:MET:HE3	4:H:119:ILE:HD11	1.92	0.51
8:B:51:LEU:HD11	8:B:140:ILE:HG23	1.93	0.51
8:B:57:GLU:HA	8:B:60:LYS:HD3	1.91	0.51
1:A:25:THR:HB	1:A:78:LEU:HG	1.91	0.51
2:C:174:LYS:HD3	2:C:174:LYS:C	2.36	0.51
3:D:120:GLU:O	3:D:121:GLU:HG2	2.09	0.51
8:B:263:LYS:HA	8:B:263:LYS:HE2	1.92	0.51
3:D:169:SER:O	3:D:169:SER:OG	2.25	0.51
8:B:2:LYS:NZ	8:B:76:SER:HB2	2.25	0.51
1:A:286:GLU:HA	1:A:289:LYS:HE3	1.93	0.51
8:B:2:LYS:HB3	8:B:130:THR:HA	1.93	0.51
2:C:65:ARG:NE	2:C:71:LYS:HZ3	2.06	0.51
4:G:64:ASP:HB2	4:G:67:LYS:HE2	1.92	0.51
8:B:19:GLU:H	8:B:23:GLU:HG3	1.75	0.51
8:B:16:GLU:HA	8:B:16:GLU:OE2	2.10	0.51
2:C:258:GLY:N	2:C:259:GLU:OE1	2.44	0.51
3:D:46:LEU:HD11	3:D:84:ALA:HB2	1.92	0.51
4:G:5:LYS:O	4:G:9:GLU:HG3	2.11	0.51
4:G:68:ILE:HB	4:G:126:MET:HE1	1.93	0.51
3:E:32:ARG:NH2	3:E:197:SER:O	2.38	0.51
3:F:136:ILE:HD11	3:F:187:ILE:HD12	1.93	0.51
4:H:84:THR:OG1	4:H:87:ASP:OD1	2.28	0.51
8:B:555:ASN:ND2	8:B:574:VAL:O	2.42	0.51
8:B:27:ALA:HA	8:B:176:ILE:HD11	1.91	0.50
1:A:297:ARG:NH2	1:A:421:HIS:O	2.44	0.50
2:C:118:ILE:O	2:C:122:LEU:HB2	2.11	0.50
3:F:253:THR:HG23	3:F:255:SER:H	1.76	0.50
8:B:83:LEU:HD22	8:B:86:GLN:HE22	1.75	0.50
6:K:21:G:O6	7:J:30:A:N6	2.44	0.50
2:C:145:GLN:NE2	2:C:317:ASP:OD1	2.45	0.50
2:C:147:SER:HB2	2:C:282:TYR:HB2	1.93	0.50
1:A:285:TRP:HB3	1:A:288:ARG:H	1.76	0.50
2:C:126:GLN:HG2	2:C:369:THR:HG22	1.93	0.50
5:I:154:ARG:NH2	5:I:168:ASP:OD1	2.45	0.50

Continued on next page...

Continued from previous page...

Atom-1	Atom-2	Interatomic distance (Å)	Clash overlap (Å)
5:I:270:LYS:HE2	5:I:270:LYS:HA	1.92	0.50
7:J:29:C:N4	7:J:30:A:H62	2.10	0.50
8:B:507:ASP:OD1	8:B:507:ASP:N	2.29	0.50
3:D:90:PRO:HG3	3:D:226:ARG:O	2.11	0.50
4:G:5:LYS:HB2	8:B:497:GLU:HB3	1.93	0.50
1:A:331:ILE:HD12	1:A:439:PRO:HG3	1.92	0.50
8:B:325:ILE:HD12	10:B:702:SAM:C6	2.41	0.50
8:B:47:ARG:HH12	8:B:77:GLU:HB3	1.77	0.50
2:C:67:LEU:HD22	2:C:266:TYR:HB2	1.93	0.49
3:E:56:GLU:OE2	3:E:56:GLU:HA	2.12	0.49
8:B:226:ILE:HD13	8:B:228:ILE:CD1	2.42	0.49
8:B:247:TYR:O	8:B:251:ILE:HG22	2.13	0.49
1:A:286:GLU:OE2	1:A:332:ARG:NE	2.33	0.49
3:F:224:LEU:HD12	3:F:225:PRO:HD2	1.93	0.49
8:B:6:ILE:HB	8:B:72:TYR:HB2	1.93	0.49
8:B:547:ASN:ND2	8:B:579:ASP:HB3	2.27	0.49
1:A:315:ASP:OD1	1:A:315:ASP:N	2.41	0.49
2:C:102:LEU:HB3	2:C:119:MET:HE2	1.94	0.49
5:I:153:ILE:HG23	5:I:171:ILE:HD13	1.95	0.49
1:A:289:LYS:HE2	1:A:328:TYR:HB3	1.95	0.49
2:C:345:ASN:HB3	2:C:348:GLU:HG3	1.93	0.49
2:C:365:ASN:H	2:C:381:SER:HB2	1.78	0.49
4:G:24:ASP:O	4:G:26:GLN:N	2.45	0.49
8:B:163:MET:HG2	8:B:164:ILE:H	1.77	0.49
3:D:38:LEU:HD11	3:D:190:HIS:HE1	1.77	0.49
1:A:288:ARG:NH2	1:A:321:PRO:HG3	2.27	0.49
5:I:256:LYS:NZ	5:I:278:ASP:OD2	2.45	0.49
8:B:315:ILE:HD11	8:B:330:LEU:HD21	1.94	0.49
1:A:433:ILE:HG13	1:A:433:ILE:O	2.12	0.49
5:I:121:LYS:HG3	5:I:199:PHE:CD1	2.48	0.49
8:B:412:PHE:HE1	8:B:558:ILE:HD11	1.78	0.49
1:A:10:GLN:NE2	1:A:13:PRO:HA	2.28	0.49
3:F:148:VAL:HG21	3:F:153:LEU:O	2.12	0.49
3:F:263:ASN:HB3	3:F:266:ILE:HG12	1.94	0.49
1:A:136:ARG:HH12	1:A:137:LYS:HE2	1.78	0.49
3:E:33:ASP:OD2	3:E:36:THR:OG1	2.30	0.49
8:B:216:ILE:HG23	8:B:388:HIS:HB2	1.95	0.49
8:B:263:LYS:HZ3	8:B:266:LEU:HB3	1.78	0.49
2:C:297:GLN:HE22	2:C:302:ARG:HH21	1.60	0.48
4:H:32:LYS:NZ	4:H:32:LYS:HB3	2.28	0.48
5:I:251:THR:HG23	5:I:283:THR:HA	1.94	0.48

Continued on next page...

Continued from previous page...

Atom-1	Atom-2	Interatomic distance (Å)	Clash overlap (Å)
1:A:268:ILE:HD12	1:A:268:ILE:O	2.12	0.48
2:C:348:GLU:O	2:C:352:LEU:HG	2.13	0.48
3:D:136:ILE:HD13	3:D:187:ILE:HG21	1.94	0.48
3:D:226:ARG:NH2	3:E:33:ASP:OD2	2.46	0.48
4:H:48:ILE:HD12	4:H:107:ILE:HG13	1.94	0.48
8:B:102:PRO:HG3	8:B:109:LYS:HE2	1.96	0.48
8:B:114:ILE:HG12	8:B:171:PHE:CE2	2.48	0.48
8:B:348:GLU:OE2	8:B:462:ASN:ND2	2.46	0.48
1:A:302:LYS:NZ	1:A:302:LYS:HB3	2.28	0.48
2:C:135:ALA:C	2:C:136:LYS:HE2	2.38	0.48
3:F:15:HIS:ND1	3:F:222:GLN:O	2.40	0.48
4:G:99:ASN:OD1	4:G:100:TYR:N	2.46	0.48
5:I:90:LEU:HB2	5:I:103:GLY:HA3	1.95	0.48
5:I:294:ILE:O	5:I:298:ILE:HG12	2.13	0.48
8:B:18:ALA:HB1	8:B:23:GLU:HB3	1.96	0.48
8:B:254:ALA:O	8:B:257:ILE:HD12	2.13	0.48
1:A:399:TYR:HB3	1:A:420:MET:HB2	1.96	0.48
4:G:3:ILE:HG12	4:G:128:LEU:HD13	1.96	0.48
8:B:336:VAL:HG12	8:B:594:ILE:HD11	1.94	0.48
1:A:144:GLU:HA	1:A:144:GLU:OE2	2.14	0.48
1:A:390:ILE:O	1:A:438:THR:OG1	2.25	0.48
1:A:460:ASN:HB3	1:A:463:ASN:HA	1.95	0.48
2:C:366:ILE:HB	7:J:2:U:H5'	1.96	0.48
8:B:117:TYR:HE2	8:B:172:LEU:H	1.61	0.48
8:B:163:MET:HG2	8:B:164:ILE:N	2.28	0.48
2:C:187:PHE:HE2	8:B:81:LEU:HD22	1.79	0.48
3:D:149:PHE:CD2	3:D:173:LEU:HD22	2.49	0.48
8:B:89:ASP:N	8:B:89:ASP:OD1	2.42	0.48
1:A:404:LYS:HB3	1:A:414:GLU:HG2	1.96	0.47
4:H:91:LEU:HG	4:H:114:GLN:HG3	1.96	0.47
8:B:4:ILE:O	8:B:73:ILE:HA	2.15	0.47
1:A:452:MET:SD	1:A:452:MET:N	2.86	0.47
1:A:462:LEU:O	1:A:464:TYR:N	2.47	0.47
3:D:87:LEU:HB2	3:D:231:TYR:HD1	1.78	0.47
3:D:119:CYS:HB3	3:D:122:ALA:HB2	1.96	0.47
3:E:225:PRO:O	3:E:228:SER:OG	2.27	0.47
3:F:33:ASP:OD2	3:F:36:THR:N	2.33	0.47
2:C:155:LYS:HG2	2:C:156:ASP:H	1.78	0.47
8:B:559:GLN:O	8:B:569:LYS:NZ	2.46	0.47
1:A:288:ARG:NH2	1:A:328:TYR:OH	2.46	0.47
2:C:56:MET:HB2	2:C:304:VAL:HG13	1.97	0.47

Continued on next page...

Continued from previous page...

Atom-1	Atom-2	Interatomic distance (Å)	Clash overlap (Å)
2:C:72:SER:OG	2:C:73:ALA:N	2.48	0.47
2:C:142:VAL:HG12	2:C:285:LEU:HD22	1.95	0.47
8:B:182:LYS:H	8:B:182:LYS:CE	2.20	0.47
1:A:1:MET:HE3	1:A:1:MET:H1	1.79	0.47
1:A:86:TYR:N	1:A:154:GLY:O	2.37	0.47
2:C:167:LEU:HD11	2:C:236:LYS:HD3	1.96	0.47
8:B:23:GLU:HA	8:B:23:GLU:OE1	2.13	0.47
1:A:332:ARG:HH21	1:A:341:TYR:HE2	1.63	0.47
2:C:365:ASN:OD1	2:C:366:ILE:N	2.47	0.47
5:I:84:LEU:HB3	5:I:237:ILE:HB	1.96	0.47
6:K:33:C:OP1	8:B:487:SER:OG	2.32	0.47
3:F:90:PRO:HG3	3:F:226:ARG:O	2.15	0.47
5:I:113:PRO:HG2	5:I:213:LEU:HD21	1.95	0.47
8:B:369:CYS:SG	8:B:374:ARG:NH1	2.88	0.47
1:A:289:LYS:HG3	1:A:435:TYR:CE1	2.50	0.47
2:C:320:GLU:H	2:C:320:GLU:CD	2.23	0.47
2:C:331:GLN:HB2	2:C:334:ARG:HG3	1.96	0.47
3:D:91:VAL:HG21	3:D:196:LEU:HD13	1.97	0.47
4:H:76:ILE:HD12	4:H:102:MET:HE1	1.97	0.47
5:I:198:VAL:HB	5:I:248:LYS:HB3	1.97	0.47
8:B:295:ILE:HD13	8:B:364:GLN:HG3	1.97	0.47
8:B:325:ILE:HG12	8:B:327:GLY:H	1.79	0.47
10:B:702:SAM:H4'	10:B:702:SAM:HG1	1.80	0.47
1:A:40:LEU:HD21	1:A:70:LEU:HD21	1.96	0.46
1:A:429:TYR:H	1:A:434:ASN:ND2	2.09	0.46
2:C:331:GLN:HA	2:C:331:GLN:OE1	2.14	0.46
2:C:378:PRO:HG3	7:J:4:A:C4	2.50	0.46
1:A:297:ARG:HE	1:A:422:ILE:HD13	1.80	0.46
1:A:339:GLU:OE1	7:J:35:G:N2	2.48	0.46
2:C:406:LYS:HE3	2:C:406:LYS:HA	1.97	0.46
2:C:407:LEU:HD23	2:C:407:LEU:HA	1.80	0.46
8:B:67:LEU:HD22	8:B:326:GLY:HA3	1.97	0.46
4:G:47:LEU:HD21	4:G:106:ILE:HD13	1.97	0.46
5:I:63:LEU:HD12	5:I:63:LEU:H	1.81	0.46
8:B:325:ILE:HG12	8:B:327:GLY:N	2.31	0.46
1:A:93:PHE:CD1	1:A:118:VAL:HG11	2.50	0.46
7:J:15:G:O2'	7:J:16:A:OP2	2.30	0.46
8:B:41:PRO:HG3	8:B:87:HIS:HD2	1.80	0.46
8:B:83:LEU:HD22	8:B:86:GLN:NE2	2.30	0.46
1:A:38:PHE:O	1:A:42:LYS:HG2	2.15	0.46
1:A:268:ILE:HG22	1:A:455:LYS:HE3	1.97	0.46

Continued on next page...

Continued from previous page...

Atom-1	Atom-2	Interatomic distance (Å)	Clash overlap (Å)
3:D:208:ASN:ND2	7:J:15:G:N3	2.63	0.46
2:C:115:GLU:O	2:C:119:MET:HE3	2.16	0.46
8:B:91:VAL:HA	8:B:94:GLU:OE2	2.15	0.46
1:A:92:THR:HA	1:A:107:GLN:HB2	1.97	0.46
1:A:125:THR:HA	1:A:146:ASN:HB3	1.96	0.46
1:A:405:ASN:HB2	1:A:408:MET:HE1	1.98	0.46
1:A:431:ASN:N	1:A:431:ASN:OD1	2.49	0.46
1:A:452:MET:HA	1:A:460:ASN:HD21	1.81	0.46
8:B:20:SER:N	8:B:23:GLU:HB2	2.31	0.46
8:B:41:PRO:HG3	8:B:87:HIS:CD2	2.50	0.46
1:A:145:LYS:NZ	1:A:145:LYS:HB3	2.30	0.46
5:I:53:THR:HG22	5:I:213:LEU:HB2	1.97	0.46
5:I:81:TYR:O	5:I:81:TYR:CG	2.68	0.46
8:B:53:LEU:HD23	8:B:302:LYS:HG3	1.97	0.46
3:D:56:GLU:H	3:D:56:GLU:CD	2.20	0.45
1:A:328:TYR:HB2	1:A:434:ASN:O	2.17	0.45
3:D:6:TYR:CE1	3:D:275:GLU:HB3	2.50	0.45
5:I:135:LYS:HE3	5:I:135:LYS:HB3	1.76	0.45
8:B:539:LEU:HG	8:B:584:ILE:HD11	1.98	0.45
3:D:146:ALA:HB2	3:D:163:ILE:HD12	1.98	0.45
3:D:208:ASN:HD21	7:J:15:G:H21	1.64	0.45
7:J:9:A:H1'	7:J:10:U:C6	2.51	0.45
8:B:66:GLY:O	8:B:326:GLY:N	2.38	0.45
8:B:105:PRO:HG3	8:B:182:LYS:HD3	1.99	0.45
8:B:312:ILE:O	8:B:316:VAL:HG22	2.15	0.45
1:A:263:PHE:CD2	1:A:264:ARG:HD2	2.51	0.45
2:C:130:MET:SD	2:C:414:LEU:HD21	2.56	0.45
2:C:245:SER:OG	2:C:269:GLU:OE2	2.34	0.45
3:E:3:THR:HG21	3:E:117:PHE:HB3	1.99	0.45
6:K:14:A:H2'	6:K:15:C:C6	2.50	0.45
8:B:318:TYR:HE2	8:B:334:ALA:HB1	1.82	0.45
8:B:412:PHE:CE1	8:B:558:ILE:HD11	2.52	0.45
5:I:134:ASP:O	5:I:136:GLY:N	2.50	0.45
5:I:104:PHE:HE2	5:I:113:PRO:HB3	1.82	0.45
8:B:163:MET:HG2	8:B:164:ILE:HG13	1.99	0.45
8:B:347:VAL:HG11	8:B:435:LEU:HD12	1.97	0.45
2:C:364:ARG:HH21	2:C:384:LYS:HB3	1.81	0.45
8:B:253:ASP:O	8:B:257:ILE:HG13	2.17	0.45
8:B:392:MET:O	8:B:396:LEU:HB2	2.17	0.45
8:B:456:LYS:HE2	8:B:542:LEU:HD21	1.99	0.45
1:A:187:ASN:HB3	1:A:192:ASN:HB2	1.98	0.45

Continued on next page...

Continued from previous page...

Atom-1	Atom-2	Interatomic distance (Å)	Clash overlap (Å)
1:A:406:LYS:HD3	1:A:412:LYS:HZ1	1.82	0.45
3:F:45:GLY:HA2	7:J:20:A:H1'	1.99	0.45
4:H:54:PHE:CD1	4:H:68:ILE:HD11	2.52	0.45
1:A:4:LEU:HD23	1:A:4:LEU:HA	1.78	0.45
1:A:134:ASP:C	1:A:136:ARG:H	2.25	0.45
2:C:155:LYS:NZ	2:C:160:SER:O	2.45	0.45
3:D:178:LYS:NZ	3:D:183:ASP:OD1	2.47	0.45
3:E:263:ASN:HB3	3:E:266:ILE:HG12	1.99	0.45
3:F:20:GLU:HA	3:F:20:GLU:OE2	2.16	0.45
8:B:383:ILE:O	8:B:437:PHE:HA	2.16	0.45
2:C:61:PHE:CE1	2:C:83:PRO:HB3	2.51	0.44
2:C:185:LYS:HD3	2:C:185:LYS:N	2.31	0.44
5:I:256:LYS:HE2	5:I:256:LYS:HB2	1.86	0.44
8:B:95:ILE:O	8:B:99:ILE:HG22	2.17	0.44
2:C:250:GLY:HA3	2:C:266:TYR:CZ	2.52	0.44
3:F:104:ASP:N	3:F:104:ASP:OD1	2.49	0.44
3:F:105:GLU:HG3	3:F:190:HIS:HB2	1.98	0.44
7:J:9:A:H1'	7:J:10:U:C5	2.52	0.44
2:C:358:SER:HA	2:C:392:SER:HB3	1.99	0.44
4:H:127:LYS:HE3	4:H:131:ARG:HH21	1.81	0.44
5:I:30:PHE:HB3	5:I:41:THR:HG21	1.99	0.44
5:I:81:TYR:O	5:I:81:TYR:CD1	2.70	0.44
1:A:371:LEU:HB3	1:A:382:VAL:HG23	1.99	0.44
3:F:89:MET:HE1	3:F:197:SER:HB2	2.00	0.44
3:F:263:ASN:HB2	3:F:268:TYR:HB2	2.00	0.44
4:H:87:ASP:OD1	4:H:87:ASP:N	2.49	0.44
8:B:217:LEU:HD23	8:B:388:HIS:CG	2.53	0.44
1:A:417:GLU:O	1:A:419:THR:HG23	2.17	0.44
3:D:114:MET:HB3	3:D:126:ILE:HD11	2.00	0.44
7:J:27:U:H1'	7:J:28:C:C6	2.52	0.44
8:B:82:GLU:H	8:B:82:GLU:CD	2.25	0.44
8:B:42:PHE:HE2	8:B:84:LEU:HD13	1.83	0.44
8:B:497:GLU:O	8:B:501:ILE:HG13	2.17	0.44
1:A:317:SER:O	1:A:317:SER:OG	2.32	0.44
2:C:115:GLU:HA	2:C:118:ILE:HG22	2.00	0.44
4:H:123:ALA:HA	4:H:126:MET:HE2	1.99	0.44
2:C:354:ASN:N	2:C:395:TYR:O	2.42	0.44
2:C:383:SER:HA	8:B:160:GLU:O	2.18	0.44
3:F:236:ASP:N	3:F:236:ASP:OD1	2.51	0.44
8:B:45:LYS:HZ1	8:B:47:ARG:NH2	2.13	0.44
2:C:177:PHE:CZ	2:C:355:PHE:HB2	2.51	0.43

Continued on next page...

Continued from previous page...

Atom-1	Atom-2	Interatomic distance (Å)	Clash overlap (Å)
2:C:384:LYS:HG2	8:B:160:GLU:HB2	2.00	0.43
8:B:373:GLN:OE1	8:B:373:GLN:N	2.51	0.43
1:A:425:ILE:O	1:A:429:TYR:HB2	2.18	0.43
2:C:193:CYS:HA	2:C:194:PRO:HD3	1.76	0.43
3:D:103:SER:OG	3:D:106:VAL:HG23	2.18	0.43
3:D:267:GLY:HA2	3:D:270:TYR:HE2	1.83	0.43
3:E:6:TYR:CE2	3:E:275:GLU:HG2	2.53	0.43
8:B:51:LEU:HB2	8:B:52:PRO:HD3	2.00	0.43
2:C:282:TYR:HB3	2:C:318:ILE:HG21	2.00	0.43
3:F:100:MET:HE1	3:F:227:TYR:O	2.17	0.43
5:I:85:ILE:HD11	5:I:234:PHE:CD2	2.53	0.43
8:B:85:LYS:HG3	8:B:86:GLN:N	2.34	0.43
8:B:570:GLU:OE1	8:B:570:GLU:HA	2.18	0.43
1:A:132:ASN:OD1	1:A:132:ASN:N	2.40	0.43
2:C:300:GLY:N	7:J:4:A:H5'	2.33	0.43
4:H:47:LEU:HD23	4:H:47:LEU:HA	1.74	0.43
8:B:51:LEU:CB	8:B:52:PRO:HD3	2.48	0.43
8:B:216:ILE:HG21	8:B:388:HIS:O	2.18	0.43
8:B:567:ASP:O	8:B:571:ILE:HG12	2.18	0.43
3:F:99:LEU:HD21	3:F:153:LEU:HD13	2.00	0.43
8:B:129:ARG:HG2	8:B:131:LEU:HG	2.01	0.43
7:J:15:G:H1'	7:J:16:A:C8	2.53	0.43
8:B:117:TYR:CD1	8:B:117:TYR:C	2.94	0.43
8:B:303:ALA:HB1	8:B:358:ILE:HD13	2.00	0.43
8:B:409:ASP:CG	8:B:554:ARG:HH12	2.27	0.43
1:A:43:LEU:HD21	1:A:174:LYS:HD2	2.00	0.43
1:A:234:GLN:C	1:A:236:THR:H	2.26	0.43
3:D:46:LEU:O	3:D:50:ILE:HG13	2.18	0.43
3:E:61:VAL:HA	3:E:65:PHE:HD1	1.84	0.43
3:E:105:GLU:HG3	3:E:190:HIS:HB2	2.00	0.43
4:H:47:LEU:HD13	4:H:106:ILE:HD13	2.00	0.43
5:I:80:ILE:HG22	5:I:81:TYR:N	2.33	0.43
5:I:147:LYS:O	5:I:151:GLU:HG2	2.19	0.43
8:B:114:ILE:HG12	8:B:171:PHE:CD2	2.54	0.43
1:A:218:LYS:O	1:A:468:LYS:NZ	2.42	0.43
2:C:338:LEU:HD11	2:C:423:ILE:HB	2.01	0.43
3:D:1:MET:HE1	3:D:244:LEU:HD23	2.00	0.43
3:F:56:GLU:CD	3:F:56:GLU:N	2.76	0.43
5:I:271:GLN:OE1	5:I:271:GLN:HA	2.18	0.43
1:A:324:ASN:OD1	1:A:324:ASN:C	2.62	0.43
3:D:102:ILE:HG23	3:D:187:ILE:HG12	2.00	0.43

Continued on next page...

Continued from previous page...

Atom-1	Atom-2	Interatomic distance (Å)	Clash overlap (Å)
3:E:90:PRO:HG2	3:E:226:ARG:O	2.18	0.43
1:A:266:GLU:OE2	1:A:266:GLU:N	2.52	0.43
2:C:51:ILE:HG23	2:C:307:MET:HG2	2.01	0.43
2:C:125:GLU:OE2	2:C:125:GLU:HA	2.19	0.43
4:G:38:PHE:CE2	4:G:72:LEU:HD11	2.54	0.43
8:B:55:ASN:O	8:B:56:GLU:HB2	2.19	0.43
1:A:425:ILE:HG21	1:A:435:TYR:HB2	2.00	0.42
3:E:72:GLU:OE2	3:E:72:GLU:HA	2.18	0.42
3:F:97:PRO:HG2	5:I:7:LEU:HA	2.01	0.42
1:A:264:ARG:HB2	1:A:265:ASN:H	1.49	0.42
1:A:391:LEU:HD22	1:A:439:PRO:O	2.20	0.42
3:D:74:THR:HG23	7:J:5:A:N3	2.34	0.42
3:E:149:PHE:CD2	3:E:173:LEU:HD22	2.54	0.42
3:E:267:GLY:HA2	3:E:270:TYR:HE1	1.85	0.42
8:B:217:LEU:O	8:B:217:LEU:HD13	2.19	0.42
3:D:245:LYS:HB3	3:D:245:LYS:HE3	1.79	0.42
4:G:101:SER:OG	4:G:104:GLN:HG3	2.20	0.42
5:I:148:GLU:HG2	5:I:148:GLU:H	1.63	0.42
8:B:216:ILE:HD11	8:B:273:ILE:HG12	2.00	0.42
8:B:369:CYS:SG	8:B:374:ARG:HD2	2.60	0.42
2:C:389:LYS:O	2:C:392:SER:OG	2.32	0.42
3:D:93:SER:HA	3:D:157:ILE:O	2.19	0.42
3:F:16:VAL:HG21	3:F:41:ILE:HG12	2.01	0.42
8:B:308:ASN:O	8:B:312:ILE:HG13	2.19	0.42
1:A:322:ASN:OD1	1:A:325:GLY:N	2.48	0.42
3:D:90:PRO:HG2	3:D:225:PRO:HB2	2.01	0.42
3:E:100:MET:HE1	3:E:227:TYR:O	2.20	0.42
3:F:89:MET:HE3	3:F:89:MET:HB3	1.82	0.42
8:B:432:LYS:NZ	8:B:432:LYS:HB2	2.34	0.42
1:A:2:ASN:HA	1:A:172:ILE:HD13	2.00	0.42
5:I:170:GLU:OE2	5:I:280:LYS:HE2	2.19	0.42
5:I:218:ILE:HG13	5:I:232:ILE:HB	2.02	0.42
8:B:233:LEU:HA	8:B:236:ILE:HG22	2.01	0.42
8:B:263:LYS:NZ	8:B:266:LEU:HD23	2.34	0.42
3:E:8:ILE:O	3:E:229:ARG:HA	2.20	0.42
8:B:39:VAL:HG21	8:B:72:TYR:CE2	2.55	0.42
1:A:217:LEU:HG	1:A:382:VAL:HG11	2.01	0.42
1:A:384:ASN:O	1:A:444:LEU:HD23	2.20	0.42
3:E:50:ILE:HD12	3:E:81:PHE:CE2	2.55	0.42
4:H:6:LYS:HG3	4:H:10:TYR:CZ	2.54	0.42
5:I:128:PHE:HB3	5:I:175:GLU:CD	2.44	0.42

Continued on next page...

Continued from previous page...

Atom-1	Atom-2	Interatomic distance (Å)	Clash overlap (Å)
5:I:231:PRO:HD2	6:K:18:C:O4'	2.20	0.42
8:B:216:ILE:HD12	8:B:216:ILE:HA	1.88	0.42
8:B:277:LYS:HA	8:B:330:LEU:O	2.20	0.42
8:B:281:ASP:OD1	8:B:408:LYS:NZ	2.53	0.42
1:A:28:ALA:HB3	5:I:306:ILE:O	2.18	0.42
1:A:224:VAL:O	1:A:225:TYR:HD2	2.02	0.42
2:C:334:ARG:HB3	2:C:393:VAL:CG2	2.49	0.42
4:H:46:GLY:C	4:H:49:PRO:HD2	2.45	0.42
5:I:262:SER:HA	5:I:265:ILE:HG22	2.02	0.42
5:I:266:GLU:O	5:I:270:LYS:HG2	2.19	0.42
8:B:41:PRO:O	8:B:45:LYS:HG2	2.19	0.42
8:B:121:TYR:HD1	8:B:122:ILE:HD13	1.85	0.42
8:B:131:LEU:HD11	8:B:142:ALA:HB3	2.01	0.42
8:B:387:TYR:CE1	8:B:388:HIS:CE1	3.08	0.42
1:A:10:GLN:NE2	1:A:156:GLU:HA	2.35	0.42
3:E:252:CYS:SG	3:E:275:GLU:HG3	2.59	0.42
5:I:77:LEU:HD13	5:I:311:LEU:HD13	2.01	0.42
8:B:8:LEU:HD22	8:B:34:LEU:HD12	2.02	0.42
8:B:51:LEU:HD13	8:B:51:LEU:HA	1.75	0.42
8:B:489:ILE:HG21	8:B:589:GLN:HG2	2.02	0.42
2:C:60:PHE:O	2:C:300:GLY:HA3	2.19	0.41
2:C:237:LEU:HD12	2:C:237:LEU:HA	1.89	0.41
4:G:114:GLN:O	4:G:118:GLU:HG3	2.20	0.41
5:I:35:GLY:O	5:I:41:THR:OG1	2.32	0.41
8:B:9:GLY:HA3	8:B:31:PHE:CE1	2.55	0.41
8:B:17:MET:O	8:B:17:MET:HG3	2.20	0.41
8:B:47:ARG:NH2	8:B:77:GLU:HG2	2.35	0.41
8:B:224:LEU:HD22	8:B:224:LEU:H	1.85	0.41
3:E:25:VAL:HB	4:G:43:ILE:HD12	2.02	0.41
3:E:161:VAL:O	3:E:163:ILE:N	2.49	0.41
8:B:456:LYS:O	8:B:459:VAL:HG22	2.20	0.41
1:A:181:ALA:HA	1:A:216:THR:HG21	2.01	0.41
1:A:418:ARG:HB3	1:A:418:ARG:CZ	2.50	0.41
2:C:155:LYS:HG2	2:C:156:ASP:N	2.36	0.41
2:C:295:ILE:HG23	2:C:304:VAL:HG23	2.02	0.41
3:F:169:SER:O	3:F:170:HIS:ND1	2.53	0.41
8:B:545:GLN:O	8:B:548:ILE:HG22	2.21	0.41
1:A:124:SER:C	1:A:146:ASN:HD22	2.28	0.41
1:A:225:TYR:HE2	1:A:469:GLN:HB3	1.86	0.41
3:D:1:MET:HE2	3:D:4:ARG:HH22	1.84	0.41
7:J:35:G:H2'	7:J:36:U:C6	2.56	0.41

Continued on next page...

Continued from previous page...

Atom-1	Atom-2	Interatomic distance (Å)	Clash overlap (Å)
8:B:59:GLN:H	8:B:59:GLN:CD	2.28	0.41
8:B:81:LEU:HD11	8:B:128:GLU:HG2	2.02	0.41
2:C:138:LEU:HD12	2:C:413:TYR:CE1	2.56	0.41
2:C:247:MET:HE2	2:C:247:MET:HB2	1.83	0.41
2:C:364:ARG:HG2	2:C:364:ARG:HH11	1.85	0.41
4:G:71:VAL:O	4:G:75:ILE:HG13	2.20	0.41
4:H:82:GLN:HA	4:H:82:GLN:OE1	2.20	0.41
5:I:78:LYS:O	5:I:311:LEU:HA	2.20	0.41
5:I:99:GLU:HG3	5:I:101:LYS:HD3	2.01	0.41
8:B:11:ILE:HG21	10:B:702:SAM:C2	2.50	0.41
8:B:53:LEU:HD12	8:B:53:LEU:HA	1.72	0.41
8:B:135:ASP:N	8:B:135:ASP:OD1	2.53	0.41
1:A:66:LYS:HE3	1:A:66:LYS:HB3	1.97	0.41
1:A:95:LEU:HD12	1:A:95:LEU:HA	1.90	0.41
3:F:80:ARG:HB2	3:F:235:MET:HB2	2.01	0.41
7:J:21:U:H1'	7:J:22:U:C6	2.56	0.41
8:B:19:GLU:CD	8:B:393:PHE:HB2	2.45	0.41
8:B:213:PHE:O	8:B:321:LYS:NZ	2.53	0.41
1:A:11:HIS:NE2	1:A:200:THR:OG1	2.45	0.41
2:C:199:TYR:CE2	2:C:212:ARG:HD3	2.55	0.41
2:C:259:GLU:N	2:C:259:GLU:CD	2.74	0.41
3:E:53:TYR:CZ	3:E:256:THR:HG23	2.56	0.41
3:E:107:LEU:HD23	3:E:107:LEU:HA	1.89	0.41
3:F:41:ILE:HB	3:F:84:ALA:HB3	2.02	0.41
5:I:32:SER:O	5:I:36:LYS:HG3	2.20	0.41
5:I:132:LEU:HG	5:I:138:THR:HG21	2.02	0.41
5:I:266:GLU:OE2	5:I:266:GLU:HA	2.21	0.41
8:B:6:ILE:N	8:B:72:TYR:O	2.54	0.41
8:B:51:LEU:HD11	8:B:140:ILE:CG2	2.50	0.41
2:C:83:PRO:HD2	2:C:149:LEU:HD22	2.02	0.41
4:H:127:LYS:O	4:H:131:ARG:HG3	2.21	0.41
8:B:36:LYS:O	8:B:40:GLU:HG2	2.20	0.41
8:B:53:LEU:CD2	8:B:302:LYS:HG3	2.51	0.41
8:B:320:GLY:HA2	8:B:335:PRO:HD3	2.02	0.41
1:A:88:ILE:HD13	1:A:106:ILE:HB	2.01	0.41
1:A:193:ASN:ND2	1:A:368:SER:HB3	2.35	0.41
1:A:463:ASN:O	1:A:463:ASN:ND2	2.54	0.41
2:C:78:HIS:HA	2:C:269:GLU:HB3	2.03	0.41
2:C:178:ASN:HB2	2:C:194:PRO:CB	2.51	0.41
3:D:5:MET:HE1	3:D:180:LEU:HD11	2.01	0.41
3:E:92:ARG:HD2	3:F:37:ASN:HB2	2.02	0.41

Continued on next page...

Continued from previous page...

Atom-1	Atom-2	Interatomic distance (Å)	Clash overlap (Å)
3:F:26:ILE:HD11	4:H:43:ILE:CD1	2.51	0.41
3:F:75:LEU:HD23	3:F:75:LEU:HA	1.80	0.41
3:F:130:SER:O	3:F:134:ASP:OD1	2.39	0.41
4:H:22:THR:HG22	4:H:23:ASN:H	1.86	0.41
5:I:36:LYS:HB3	5:I:96:SER:HA	2.03	0.41
5:I:152:TYR:HA	5:I:155:ASP:OD2	2.21	0.41
5:I:200:TYR:HB2	5:I:246:TYR:HB2	2.02	0.41
8:B:404:GLU:O	8:B:410:ASN:HB2	2.21	0.41
1:A:284:ARG:HG3	1:A:326:TYR:CD2	2.52	0.41
1:A:358:SER:HA	1:A:395:PHE:CD1	2.57	0.41
2:C:116:LYS:O	2:C:120:LYS:HG2	2.20	0.41
2:C:195:ILE:HG23	2:C:195:ILE:O	2.21	0.41
3:D:174:GLN:H	3:D:174:GLN:HG2	1.58	0.41
3:E:80:ARG:HB2	3:E:235:MET:HB2	2.03	0.41
3:F:11:LEU:N	3:F:270:TYR:O	2.50	0.41
5:I:13:LEU:HB2	5:I:111:GLY:O	2.21	0.41
5:I:85:ILE:HD11	5:I:234:PHE:HD2	1.86	0.41
6:K:11:G:H2'	6:K:12:C:H6	1.86	0.41
8:B:32:SER:O	8:B:36:LYS:HG3	2.21	0.41
8:B:392:MET:H	8:B:392:MET:HG3	1.72	0.41
1:A:104:PHE:HB3	1:A:240:ILE:HD13	2.03	0.40
2:C:342:TYR:HB2	2:C:387:PHE:CE2	2.56	0.40
3:D:129:LEU:HD23	3:D:129:LEU:HA	1.97	0.40
5:I:102:LEU:HB2	5:I:234:PHE:HB3	2.03	0.40
8:B:248:SER:O	8:B:252:TRP:HB2	2.20	0.40
1:A:128:LEU:HD12	1:A:138:LYS:HB2	2.03	0.40
1:A:253:ASP:HB3	1:A:462:LEU:HD23	2.03	0.40
1:A:286:GLU:HG2	1:A:330:TYR:CD1	2.57	0.40
1:A:375:ILE:HG22	1:A:376:ASN:OD1	2.21	0.40
2:C:122:LEU:HD12	2:C:122:LEU:HA	1.83	0.40
2:C:127:SER:OG	7:J:2:U:OP2	2.31	0.40
3:D:113:LYS:HB2	3:D:113:LYS:HE2	1.78	0.40
8:B:23:GLU:OE1	8:B:176:ILE:HG23	2.21	0.40
8:B:254:ALA:HA	8:B:257:ILE:HD11	2.03	0.40
8:B:290:MET:HB3	8:B:295:ILE:HB	2.03	0.40
3:F:202:LEU:HD23	3:F:202:LEU:HA	1.94	0.40
3:F:203:PRO:HB3	5:I:108:TYR:CD2	2.56	0.40
7:J:11:U:H2'	7:J:12:C:C6	2.56	0.40
10:B:702:SAM:HE2	10:B:702:SAM:HB2	1.70	0.40
1:A:40:LEU:O	1:A:51:GLY:HA3	2.22	0.40
1:A:322:ASN:OD1	1:A:322:ASN:C	2.64	0.40

Continued on next page...

Continued from previous page...

Atom-1	Atom-2	Interatomic distance (Å)	Clash overlap (Å)
2:C:47:ARG:NE	2:C:288:GLU:HB2	2.36	0.40
2:C:300:GLY:H	7:J:4:A:H5'	1.86	0.40
3:D:75:LEU:HD12	3:D:75:LEU:HA	1.89	0.40
4:G:100:TYR:HD1	4:G:100:TYR:HA	1.75	0.40
4:H:117:LYS:HE2	4:H:117:LYS:HB3	1.83	0.40
5:I:74:PRO:HB3	5:I:246:TYR:CE1	2.57	0.40
5:I:216:ASP:HB3	5:I:234:PHE:CE2	2.55	0.40
6:K:42:A:N3	6:K:42:A:H2'	2.37	0.40
1:A:263:PHE:HE2	1:A:264:ARG:HH11	1.66	0.40
2:C:333:ASP:OD1	2:C:333:ASP:N	2.42	0.40
2:C:335:LEU:HD23	2:C:335:LEU:HA	1.96	0.40
2:C:355:PHE:HD2	2:C:355:PHE:HA	1.78	0.40
3:D:108:GLN:HG2	3:D:133:LEU:HD21	2.02	0.40
3:D:111:ILE:HD11	3:D:129:LEU:HB3	2.04	0.40
8:B:151:GLU:OE2	8:B:151:GLU:HA	2.22	0.40
8:B:247:TYR:CD2	8:B:247:TYR:C	2.99	0.40
8:B:255:GLU:O	8:B:259:LEU:HD12	2.22	0.40
8:B:491:MET:HB3	8:B:491:MET:HE3	1.82	0.40

There are no symmetry-related clashes.

5.3 Torsion angles [i](#)

5.3.1 Protein backbone [i](#)

In the following table, the Percentiles column shows the percent Ramachandran outliers of the chain as a percentile score with respect to all PDB entries followed by that with respect to all EM entries.

The Analysed column shows the number of residues for which the backbone conformation was analysed, and the total number of residues.

Mol	Chain	Analysed	Favoured	Allowed	Outliers	Percentiles	
1	A	467/469 (100%)	406 (87%)	58 (12%)	3 (1%)	22	40
2	C	366/423 (86%)	332 (91%)	30 (8%)	4 (1%)	12	25
3	D	277/279 (99%)	267 (96%)	10 (4%)	0	100	100
3	E	277/279 (99%)	268 (97%)	9 (3%)	0	100	100
3	F	277/279 (99%)	268 (97%)	9 (3%)	0	100	100
4	G	134/136 (98%)	126 (94%)	8 (6%)	0	100	100

Continued on next page...

Continued from previous page...

Mol	Chain	Analysed	Favoured	Allowed	Outliers	Percentiles	
4	H	134/136 (98%)	129 (96%)	5 (4%)	0	100	100
5	I	312/314 (99%)	287 (92%)	23 (7%)	2 (1%)	22	40
8	B	556/600 (93%)	498 (90%)	55 (10%)	3 (0%)	25	43
All	All	2800/2915 (96%)	2581 (92%)	207 (7%)	12 (0%)	32	49

All (12) Ramachandran outliers are listed below:

Mol	Chain	Res	Type
2	C	106	PHE
2	C	256	GLU
5	I	2	PRO
8	B	370	SER
5	I	135	LYS
8	B	56	GLU
8	B	443	SER
2	C	108	TYR
1	A	426	GLU
1	A	233	ARG
1	A	407	ASN
2	C	255	VAL

5.3.2 Protein sidechains ⓘ

In the following table, the Percentiles column shows the percent sidechain outliers of the chain as a percentile score with respect to all PDB entries followed by that with respect to all EM entries.

The Analysed column shows the number of residues for which the sidechain conformation was analysed, and the total number of residues.

Mol	Chain	Analysed	Rotameric	Outliers	Percentiles	
1	A	433/433 (100%)	418 (96%)	15 (4%)	31	57
2	C	342/387 (88%)	330 (96%)	12 (4%)	31	57
3	D	250/250 (100%)	237 (95%)	13 (5%)	19	38
3	E	250/250 (100%)	244 (98%)	6 (2%)	44	69
3	F	250/250 (100%)	239 (96%)	11 (4%)	24	46
4	G	115/115 (100%)	108 (94%)	7 (6%)	15	31
4	H	115/115 (100%)	108 (94%)	7 (6%)	15	31

Continued on next page...

Continued from previous page...

Mol	Chain	Analysed	Rotameric	Outliers	Percentiles	
5	I	283/283 (100%)	272 (96%)	11 (4%)	27	52
8	B	514/544 (94%)	501 (98%)	13 (2%)	42	68
All	All	2552/2627 (97%)	2457 (96%)	95 (4%)	31	54

All (95) residues with a non-rotameric sidechain are listed below:

Mol	Chain	Res	Type
1	A	107	GLN
1	A	109	SER
1	A	190	THR
1	A	201	VAL
1	A	228	LYS
1	A	244	ASN
1	A	280	TYR
1	A	285	TRP
1	A	312	ARG
1	A	318	TRP
1	A	334	ILE
1	A	354	VAL
1	A	364	SER
1	A	409	ARG
1	A	467	LEU
2	C	76	ILE
2	C	114	THR
2	C	119	MET
2	C	147	SER
2	C	152	ILE
2	C	167	LEU
2	C	193	CYS
2	C	238	LEU
2	C	248	GLN
2	C	343	VAL
2	C	393	VAL
2	C	421	ILE
3	D	1	MET
3	D	10	THR
3	D	57	ASN
3	D	61	VAL
3	D	83	GLU
3	D	127	SER
3	D	132	LEU

Continued on next page...

Continued from previous page...

Mol	Chain	Res	Type
3	D	148	VAL
3	D	152	LEU
3	D	170	HIS
3	D	236	ASP
3	D	245	LYS
3	D	260	ILE
3	E	3	THR
3	E	20	GLU
3	E	83	GLU
3	E	166	THR
3	E	211	GLU
3	E	244	LEU
3	F	14	MET
3	F	21	VAL
3	F	89	MET
3	F	96	VAL
3	F	108	GLN
3	F	161	VAL
3	F	204	VAL
3	F	207	ARG
3	F	253	THR
3	F	258	ILE
3	F	274	SER
4	G	43	ILE
4	G	57	GLU
4	G	68	ILE
4	G	80	ARG
4	G	83	TYR
4	G	89	THR
4	G	100	TYR
4	H	5	LYS
4	H	43	ILE
4	H	47	LEU
4	H	72	LEU
4	H	74	ASP
4	H	86	THR
4	H	100	TYR
5	I	41	THR
5	I	84	LEU
5	I	131	SER
5	I	189	ILE
5	I	193	LEU

Continued on next page...

Continued from previous page...

Mol	Chain	Res	Type
5	I	228	ASP
5	I	240	ASP
5	I	256	LYS
5	I	273	ASP
5	I	275	SER
5	I	304	THR
8	B	48	THR
8	B	149	ILE
8	B	178	ASN
8	B	200	THR
8	B	219	ILE
8	B	224	LEU
8	B	353	CYS
8	B	396	LEU
8	B	435	LEU
8	B	507	ASP
8	B	562	THR
8	B	563	ILE
8	B	594	ILE

Sometimes sidechains can be flipped to improve hydrogen bonding and reduce clashes. All (27) such sidechains are listed below:

Mol	Chain	Res	Type
1	A	146	ASN
1	A	158	GLN
1	A	360	ASN
1	A	384	ASN
1	A	460	ASN
1	A	463	ASN
2	C	222	ASN
2	C	268	GLN
2	C	272	GLN
2	C	367	GLN
3	D	13	ASN
3	D	57	ASN
3	D	108	GLN
3	D	139	GLN
3	D	170	HIS
3	D	209	ASN
3	D	222	GLN
3	E	40	ASN
3	E	124	GLN

Continued on next page...

Continued from previous page...

Mol	Chain	Res	Type
3	E	209	ASN
3	F	200	ASN
4	G	104	GLN
5	I	224	ASN
5	I	253	HIS
8	B	86	GLN
8	B	262	ASN
8	B	397	HIS

5.3.3 RNA ⓘ

Mol	Chain	Analysed	Backbone Outliers	Pucker Outliers
6	K	33/49 (67%)	10 (30%)	0
7	J	40/49 (81%)	8 (20%)	0
All	All	73/98 (74%)	18 (24%)	0

All (18) RNA backbone outliers are listed below:

Mol	Chain	Res	Type
6	K	14	A
6	K	16	U
6	K	18	C
6	K	19	A
6	K	25	A
6	K	31	C
6	K	37	C
6	K	40	A
6	K	42	A
6	K	43	G
7	J	2	U
7	J	3	U
7	J	9	A
7	J	15	G
7	J	27	U
7	J	32	G
7	J	33	A
7	J	37	G

There are no RNA pucker outliers to report.

5.4 Non-standard residues in protein, DNA, RNA chains [i](#)

There are no non-standard protein/DNA/RNA residues in this entry.

5.5 Carbohydrates [i](#)

There are no oligosaccharides in this entry.

5.6 Ligand geometry [i](#)

Of 3 ligands modelled in this entry, 1 is monoatomic - leaving 2 for Mogul analysis.

In the following table, the Counts columns list the number of bonds (or angles) for which Mogul statistics could be retrieved, the number of bonds (or angles) that are observed in the model and the number of bonds (or angles) that are defined in the Chemical Component Dictionary. The Link column lists molecule types, if any, to which the group is linked. The Z score for a bond length (or angle) is the number of standard deviations the observed value is removed from the expected value. A bond length (or angle) with $|Z| > 2$ is considered an outlier worth inspection. RMSZ is the root-mean-square of all Z scores of the bond lengths (or angles).

Mol	Type	Chain	Res	Link	Bond lengths			Bond angles		
					Counts	RMSZ	$\# Z > 2$	Counts	RMSZ	$\# Z > 2$
9	ATP	B	701	11	26,33,33	0.59	0	31,52,52	0.81	2 (6%)
10	SAM	B	702	11	24,29,29	0.90	1 (4%)	23,42,42	0.99	1 (4%)

In the following table, the Chirals column lists the number of chiral outliers, the number of chiral centers analysed, the number of these observed in the model and the number defined in the Chemical Component Dictionary. Similar counts are reported in the Torsion and Rings columns. '-' means no outliers of that kind were identified.

Mol	Type	Chain	Res	Link	Chirals	Torsions	Rings
9	ATP	B	701	11	-	5/18/38/38	0/3/3/3
10	SAM	B	702	11	-	6/12/33/33	0/3/3/3

All (1) bond length outliers are listed below:

Mol	Chain	Res	Type	Atoms	Z	Observed(Å)	Ideal(Å)
10	B	702	SAM	C8-N7	-2.54	1.30	1.34

All (3) bond angle outliers are listed below:

Mol	Chain	Res	Type	Atoms	Z	Observed(°)	Ideal(°)
10	B	702	SAM	C1'-N9-C4	2.36	130.79	126.64
9	B	701	ATP	C5-C6-N6	2.30	123.84	120.35
9	B	701	ATP	PB-O3B-PG	2.04	139.83	132.83

There are no chirality outliers.

All (11) torsion outliers are listed below:

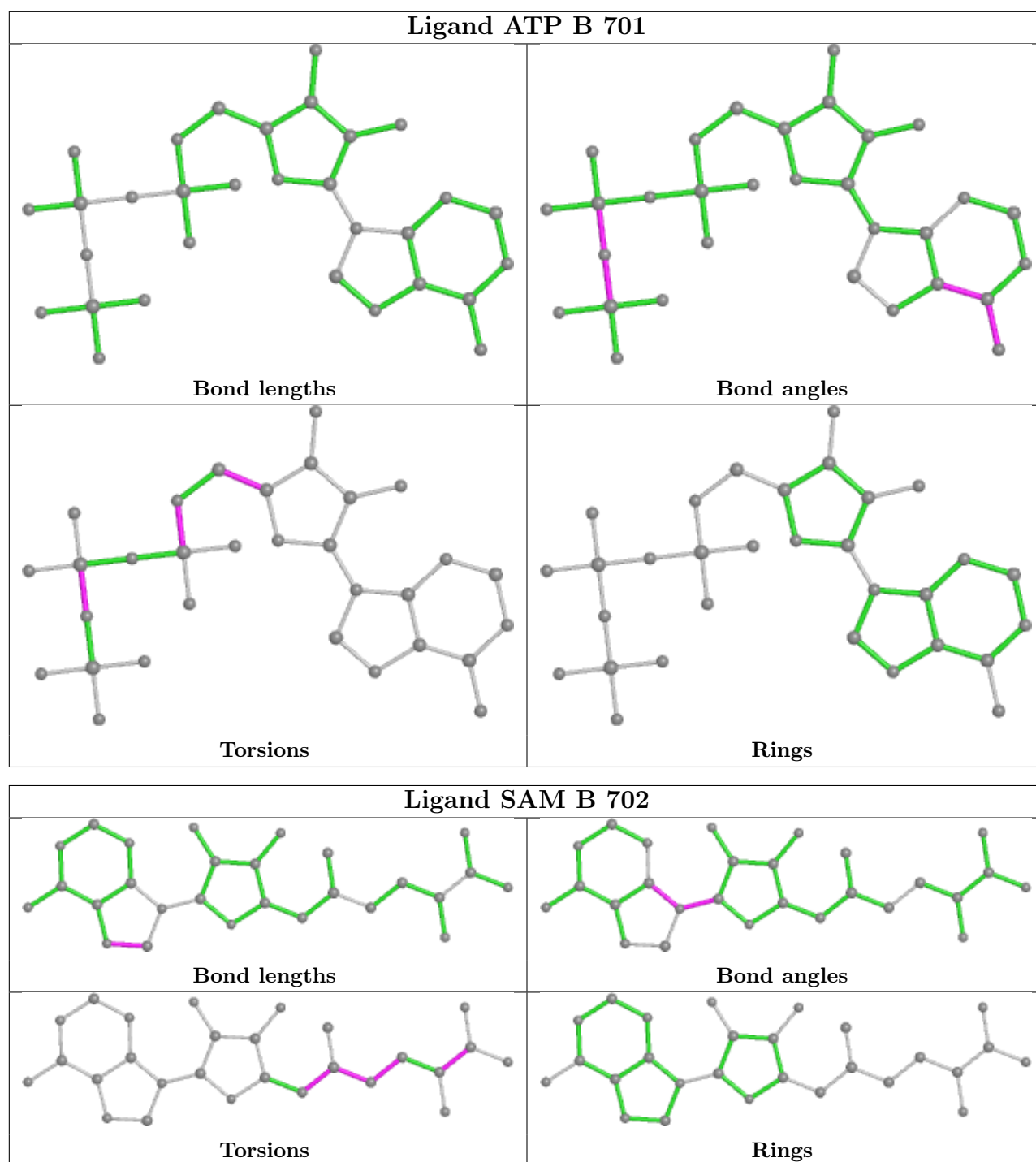
Mol	Chain	Res	Type	Atoms
9	B	701	ATP	C5'-O5'-PA-O2A
9	B	701	ATP	C5'-O5'-PA-O3A
10	B	702	SAM	C4'-C5'-SD-CG
9	B	701	ATP	C3'-C4'-C5'-O5'
9	B	701	ATP	O4'-C4'-C5'-O5'
10	B	702	SAM	CB-CG-SD-CE
10	B	702	SAM	CB-CG-SD-C5'
10	B	702	SAM	CA-CB-CG-SD
10	B	702	SAM	OXT-C-CA-CB
9	B	701	ATP	PG-O3B-PB-O2B
10	B	702	SAM	O-C-CA-CB

There are no ring outliers.

1 monomer is involved in 4 short contacts:

Mol	Chain	Res	Type	Clashes	Symm-Clashes
10	B	702	SAM	4	0

The following is a two-dimensional graphical depiction of Mogul quality analysis of bond lengths, bond angles, torsion angles, and ring geometry for all instances of the Ligand of Interest. In addition, ligands with molecular weight > 250 and outliers as shown on the validation Tables will also be included. For torsion angles, if less than 5% of the Mogul distribution of torsion angles is within 10 degrees of the torsion angle in question, then that torsion angle is considered an outlier. Any bond that is central to one or more torsion angles identified as an outlier by Mogul will be highlighted in the graph. For rings, the root-mean-square deviation (RMSD) between the ring in question and similar rings identified by Mogul is calculated over all ring torsion angles. If the average RMSD is greater than 60 degrees and the minimal RMSD between the ring in question and any Mogul-identified rings is also greater than 60 degrees, then that ring is considered an outlier. The outliers are highlighted in purple. The color gray indicates Mogul did not find sufficient equivalents in the CSD to analyse the geometry.



5.7 Other polymers [i](#)

There are no such residues in this entry.

5.8 Polymer linkage issues [i](#)

There are no chain breaks in this entry.

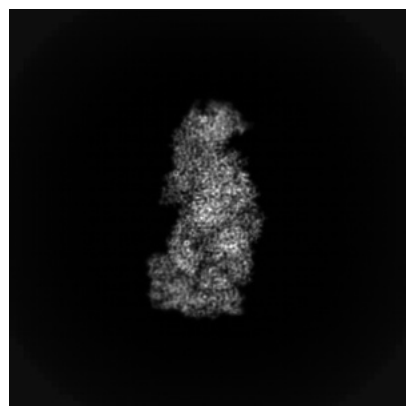
6 Map visualisation [i](#)

This section contains visualisations of the EMDB entry EMD-63296. These allow visual inspection of the internal detail of the map and identification of artifacts.

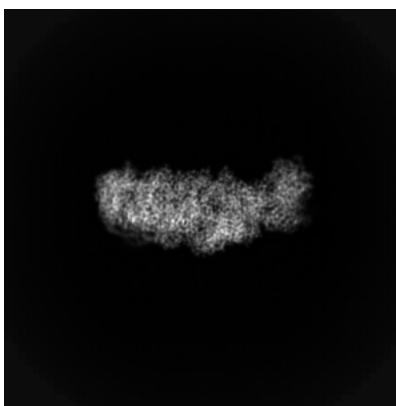
Images derived from a raw map, generated by summing the deposited half-maps, are presented below the corresponding image components of the primary map to allow further visual inspection and comparison with those of the primary map.

6.1 Orthogonal projections [i](#)

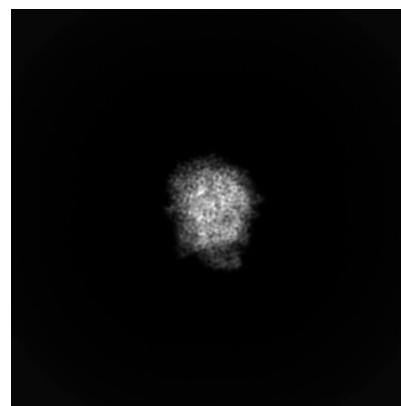
6.1.1 Primary map



X

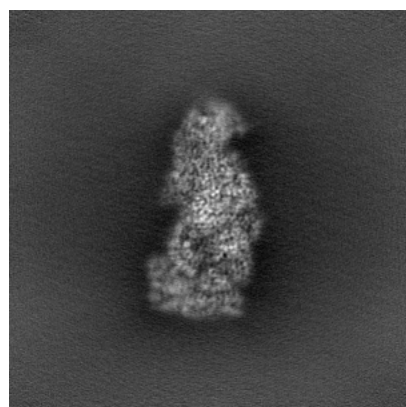


Y

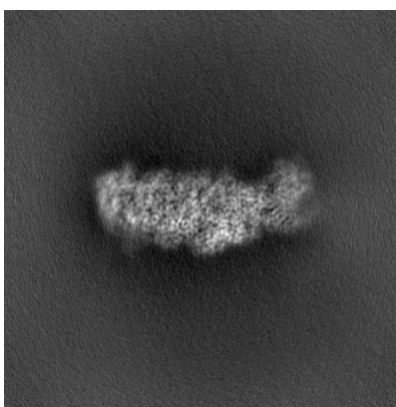


Z

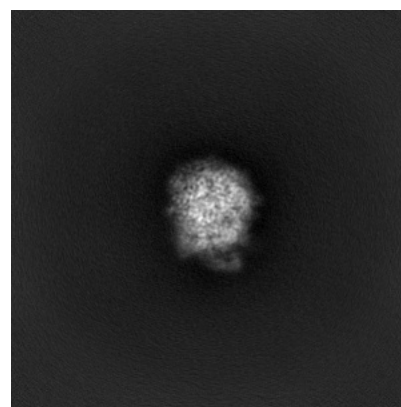
6.1.2 Raw map



X



Y



Z

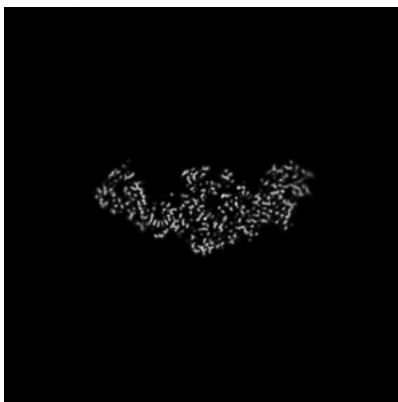
The images above show the map projected in three orthogonal directions.

6.2 Central slices [i](#)

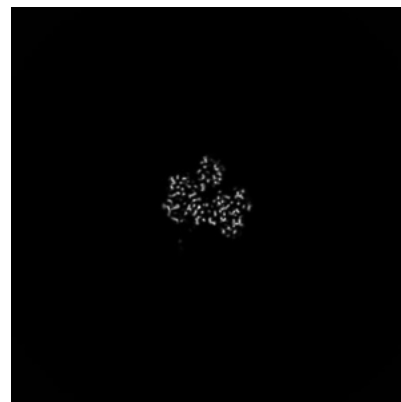
6.2.1 Primary map



X Index: 180

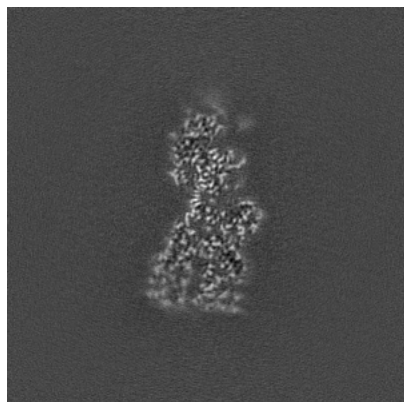


Y Index: 180

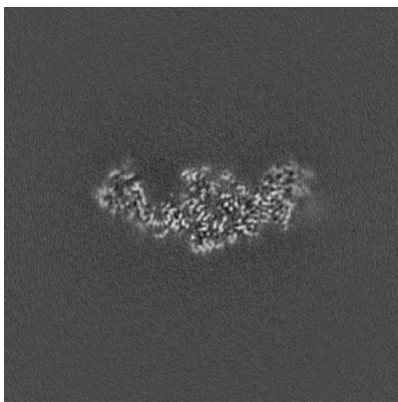


Z Index: 180

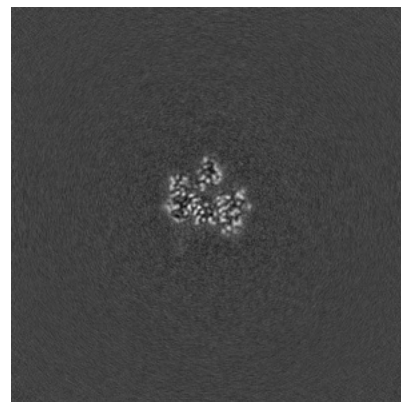
6.2.2 Raw map



X Index: 180



Y Index: 180



Z Index: 180

The images above show central slices of the map in three orthogonal directions.

6.3 Largest variance slices [i](#)

6.3.1 Primary map



X Index: 173

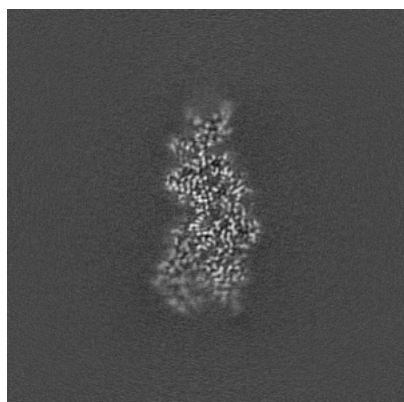


Y Index: 185

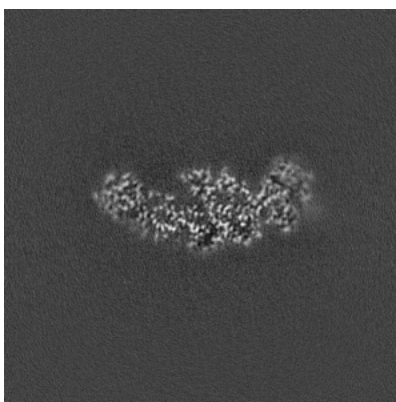


Z Index: 196

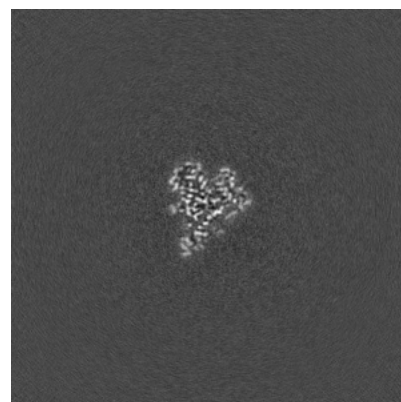
6.3.2 Raw map



X Index: 170



Y Index: 184



Z Index: 196

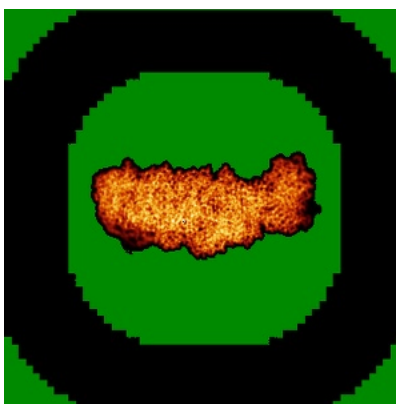
The images above show the largest variance slices of the map in three orthogonal directions.

6.4 Orthogonal standard-deviation projections (False-color) [i](#)

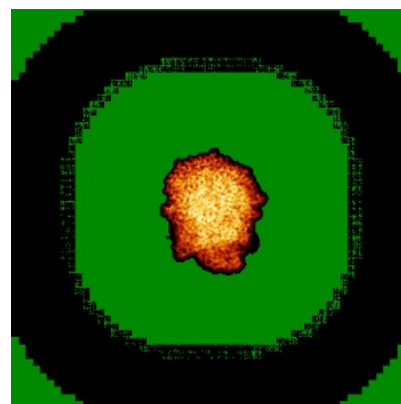
6.4.1 Primary map



X

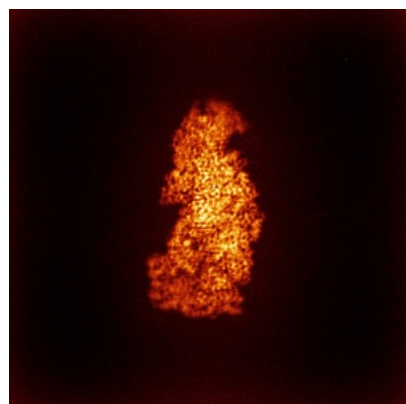


Y

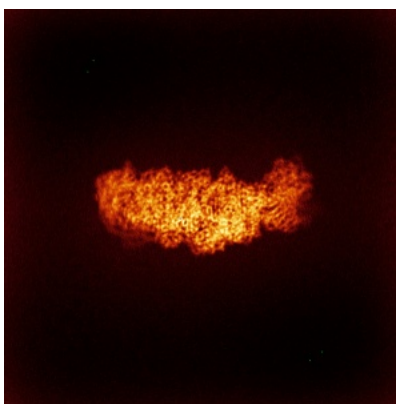


Z

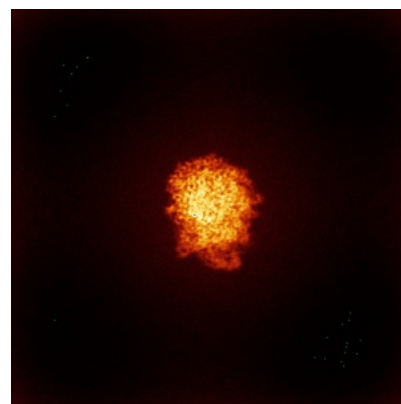
6.4.2 Raw map



X



Y

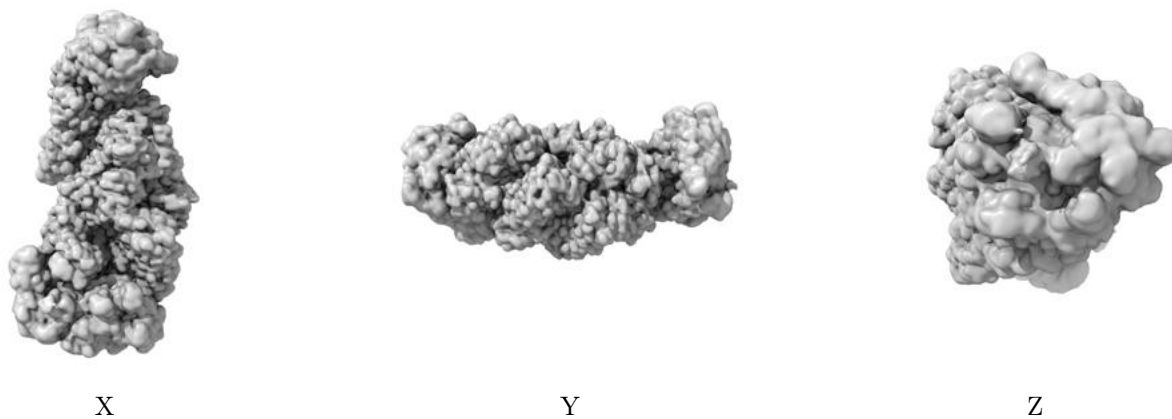


Z

The images above show the map standard deviation projections with false color in three orthogonal directions. Minimum values are shown in green, max in blue, and dark to light orange shades represent small to large values respectively.

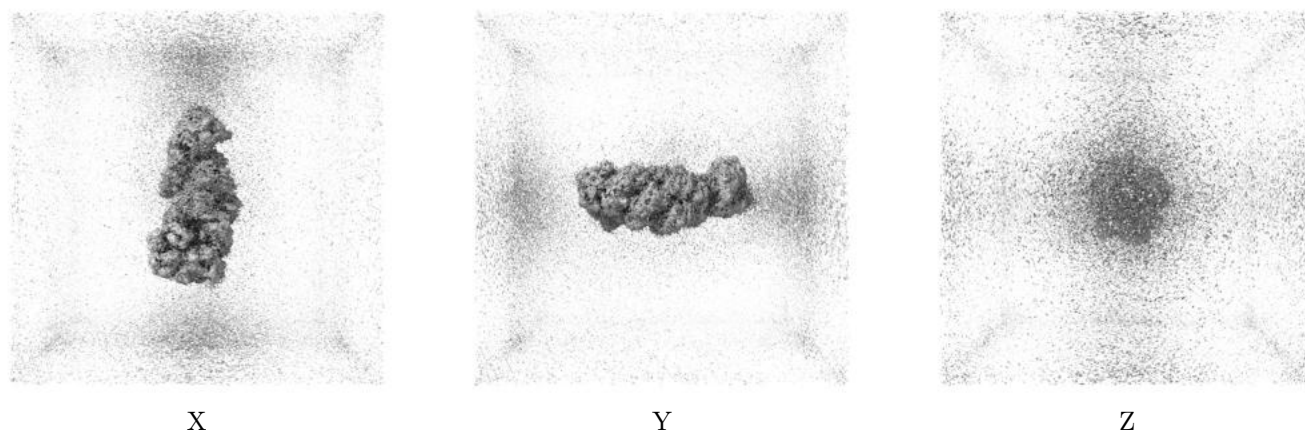
6.5 Orthogonal surface views [i](#)

6.5.1 Primary map



The images above show the 3D surface view of the map at the recommended contour level 0.1. These images, in conjunction with the slice images, may facilitate assessment of whether an appropriate contour level has been provided.

6.5.2 Raw map



These images show the 3D surface of the raw map. The raw map's contour level was selected so that its surface encloses the same volume as the primary map does at its recommended contour level.

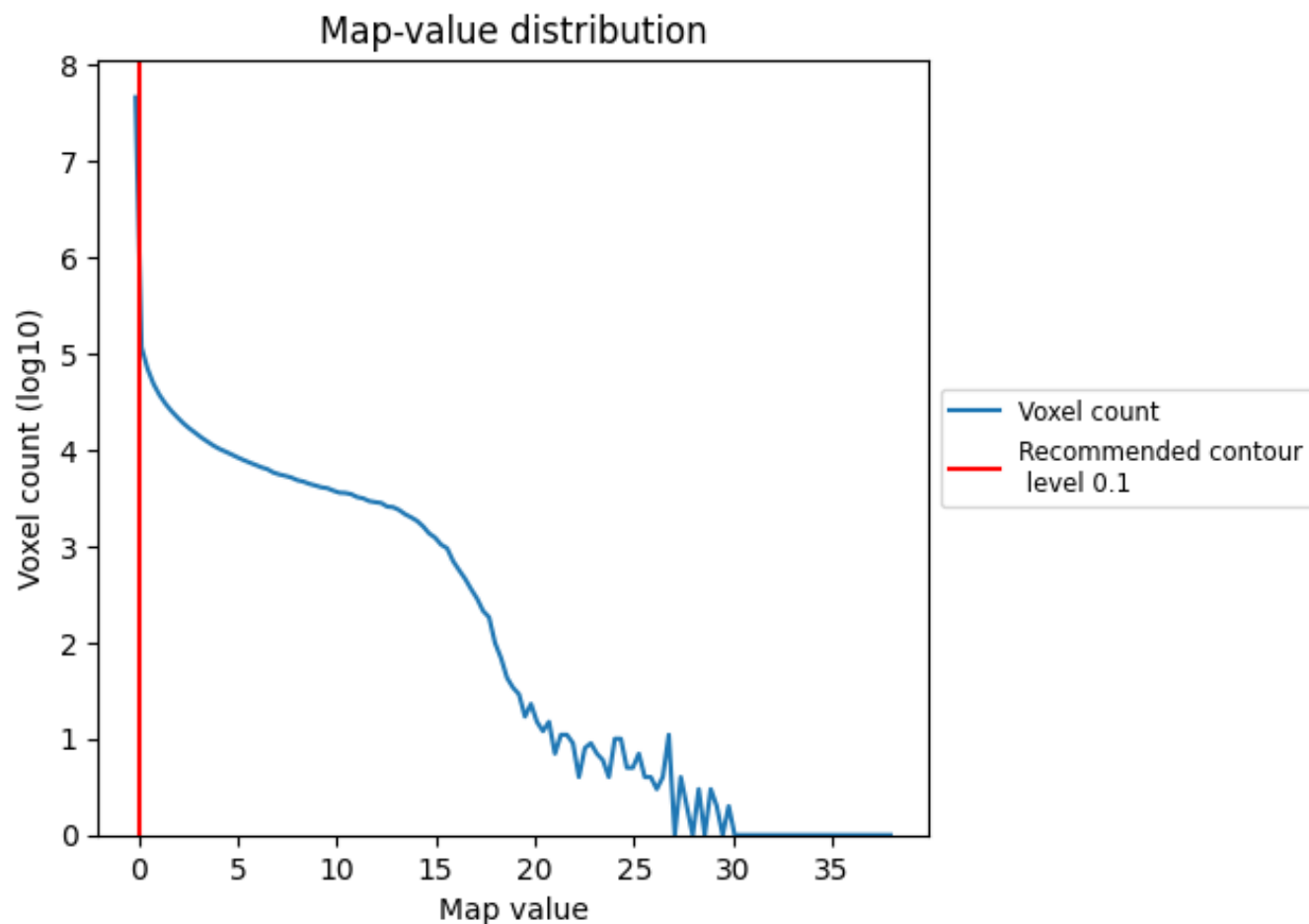
6.6 Mask visualisation [i](#)

This section was not generated. No masks/segmentation were deposited.

7 Map analysis [i](#)

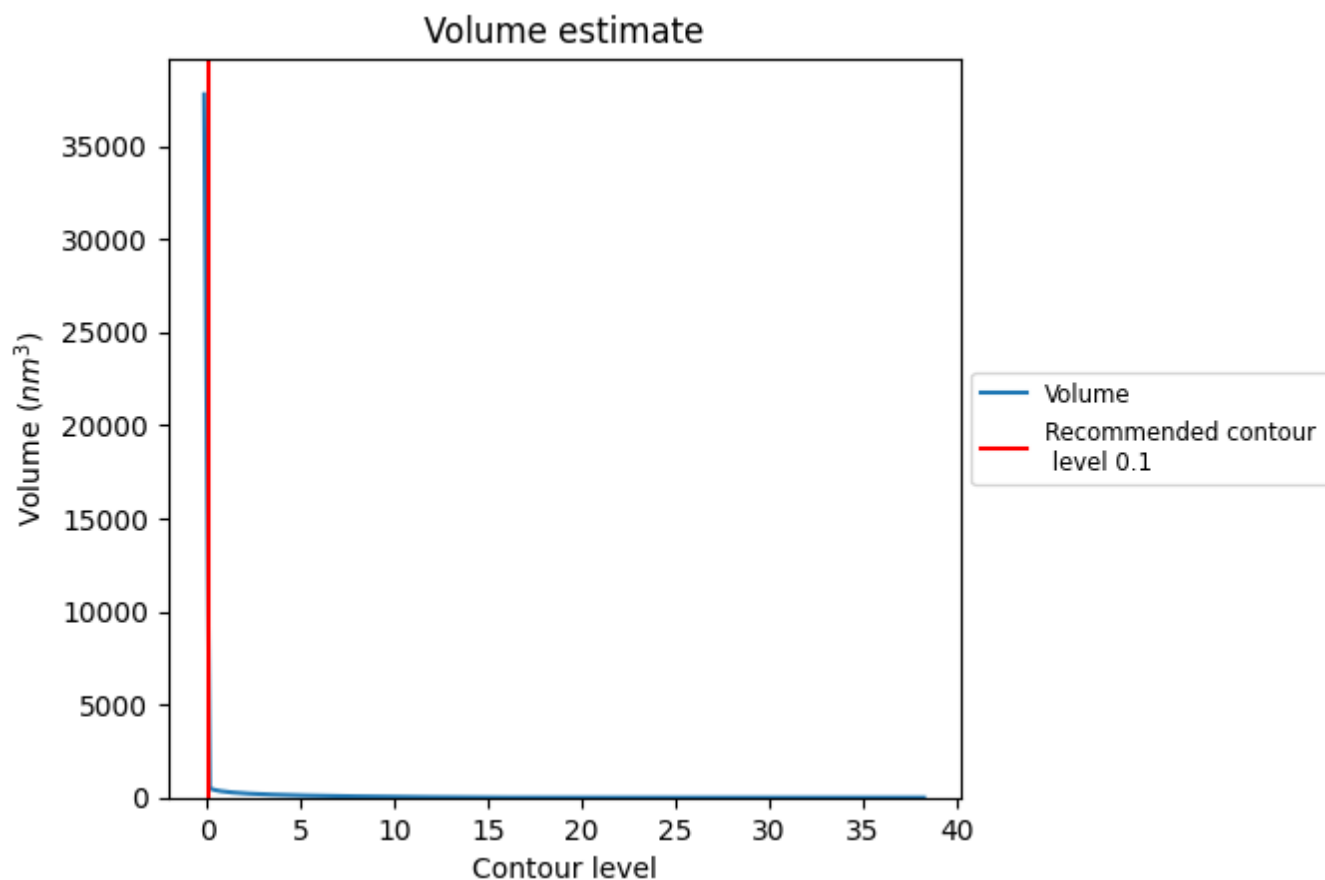
This section contains the results of statistical analysis of the map.

7.1 Map-value distribution [i](#)



The map-value distribution is plotted in 128 intervals along the x-axis. The y-axis is logarithmic. A spike in this graph at zero usually indicates that the volume has been masked.

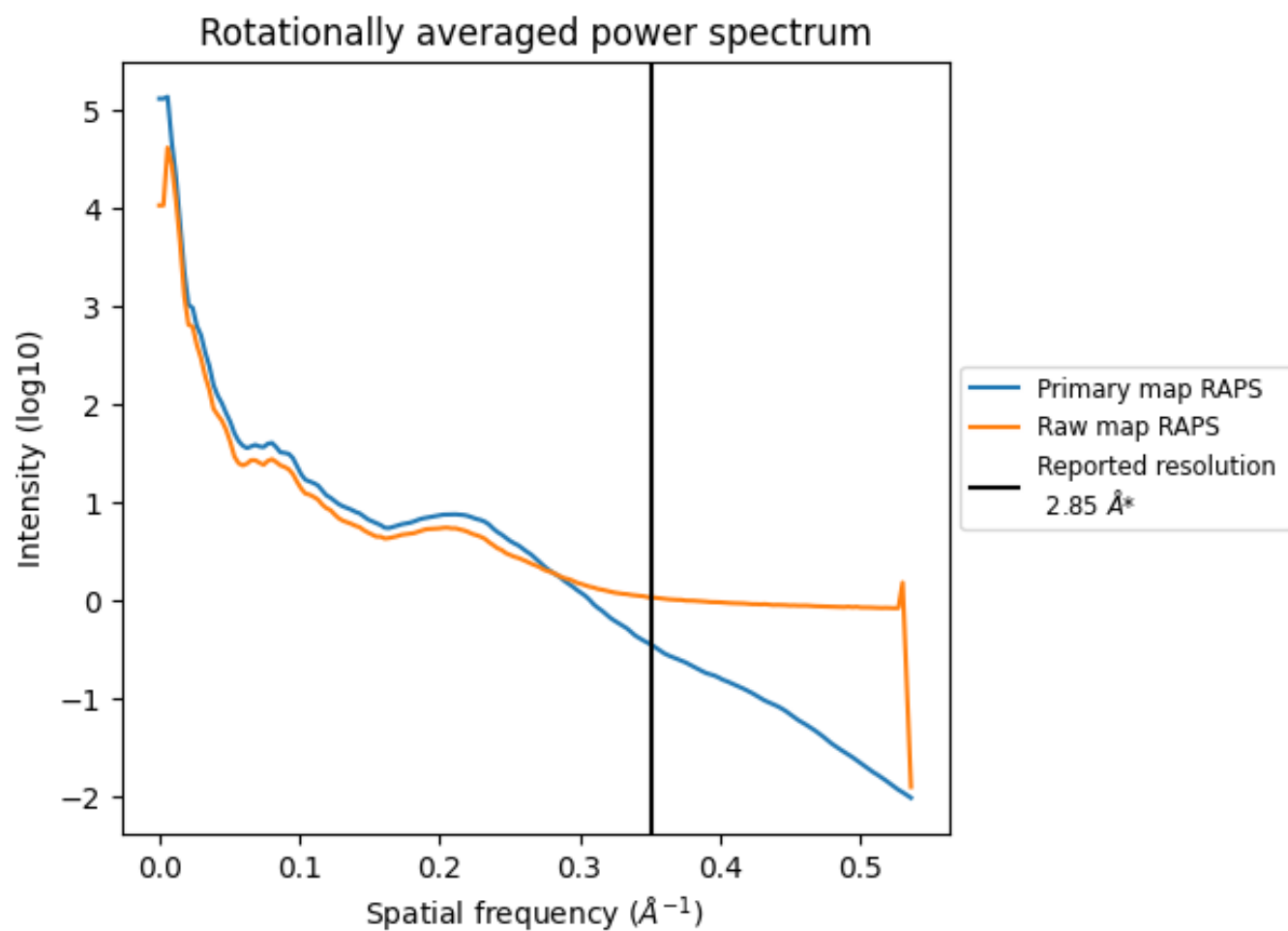
7.2 Volume estimate [i](#)



The volume at the recommended contour level is 7457 nm^3 ; this corresponds to an approximate mass of 6736 kDa.

The volume estimate graph shows how the enclosed volume varies with the contour level. The recommended contour level is shown as a vertical line and the intersection between the line and the curve gives the volume of the enclosed surface at the given level.

7.3 Rotationally averaged power spectrum ⓘ

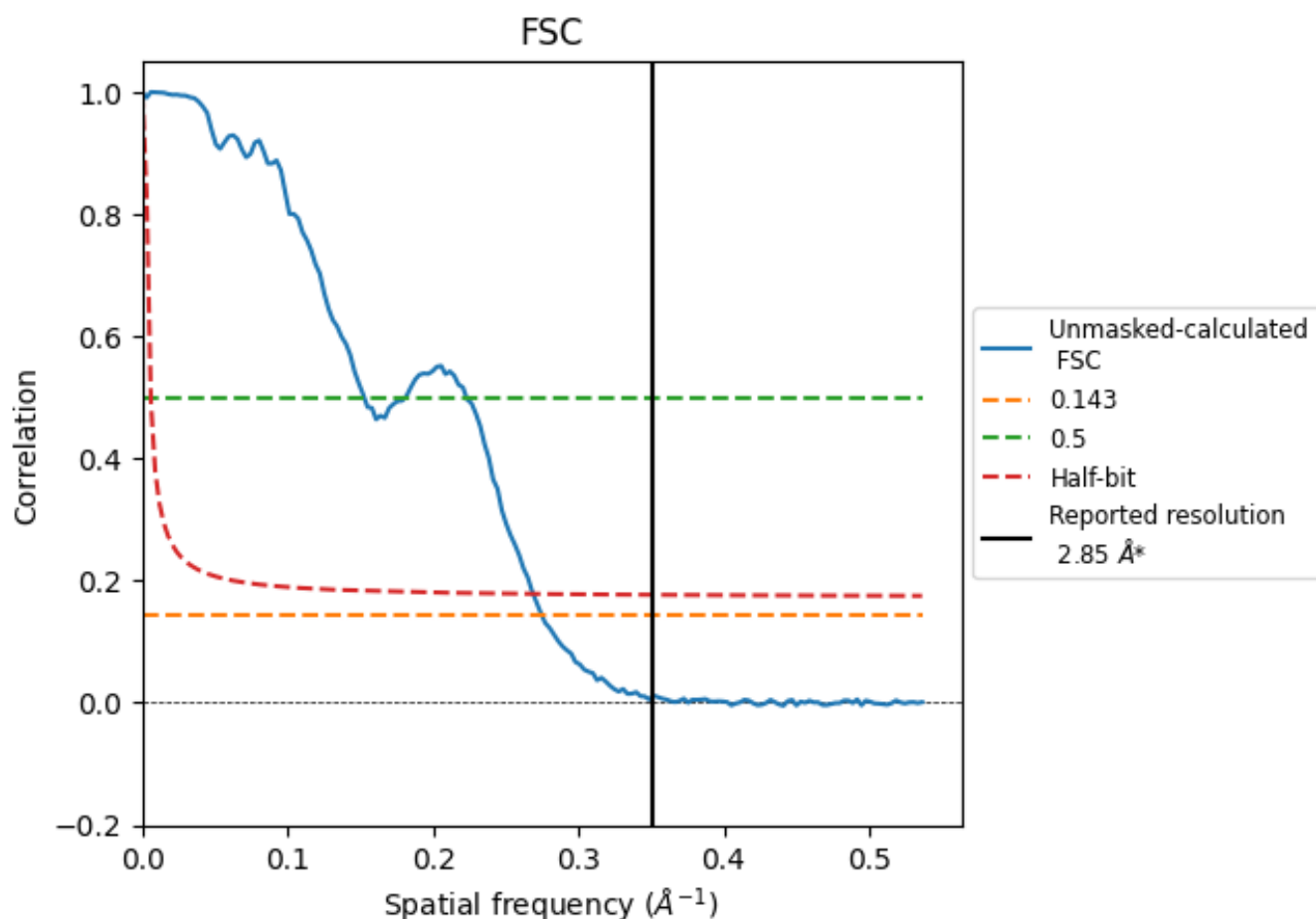


*Reported resolution corresponds to spatial frequency of 0.351 \AA^{-1}

8 Fourier-Shell correlation [i](#)

Fourier-Shell Correlation (FSC) is the most commonly used method to estimate the resolution of single-particle and subtomogram-averaged maps. The shape of the curve depends on the imposed symmetry, mask and whether or not the two 3D reconstructions used were processed from a common reference. The reported resolution is shown as a black line. A curve is displayed for the half-bit criterion in addition to lines showing the 0.143 gold standard cut-off and 0.5 cut-off.

8.1 FSC [i](#)



*Reported resolution corresponds to spatial frequency of 0.351 \AA^{-1}

8.2 Resolution estimates [i](#)

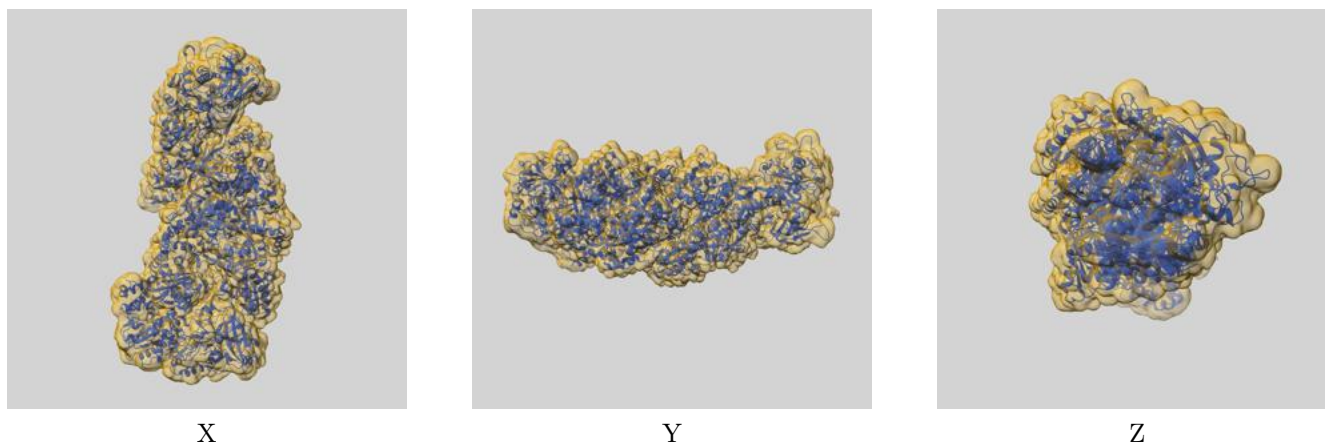
Resolution estimate (Å)	Estimation criterion (FSC cut-off)		
	0.143	0.5	Half-bit
Reported by author	2.85	-	-
Author-provided FSC curve	-	-	-
Unmasked-calculated*	3.64	6.55	3.72

*Resolution estimate based on FSC curve calculated by comparison of deposited half-maps. The value from deposited half-maps intersecting FSC 0.143 CUT-OFF 3.64 differs from the reported value 2.85 by more than 10 %

9 Map-model fit [i](#)

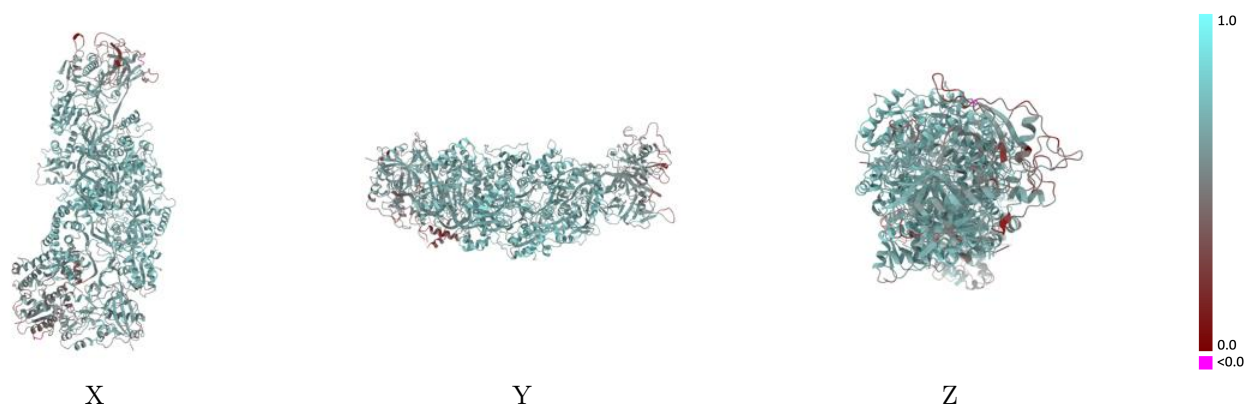
This section contains information regarding the fit between EMDB map EMD-63296 and PDB model 9LQ8. Per-residue inclusion information can be found in section [3](#) on page [9](#).

9.1 Map-model overlay [i](#)



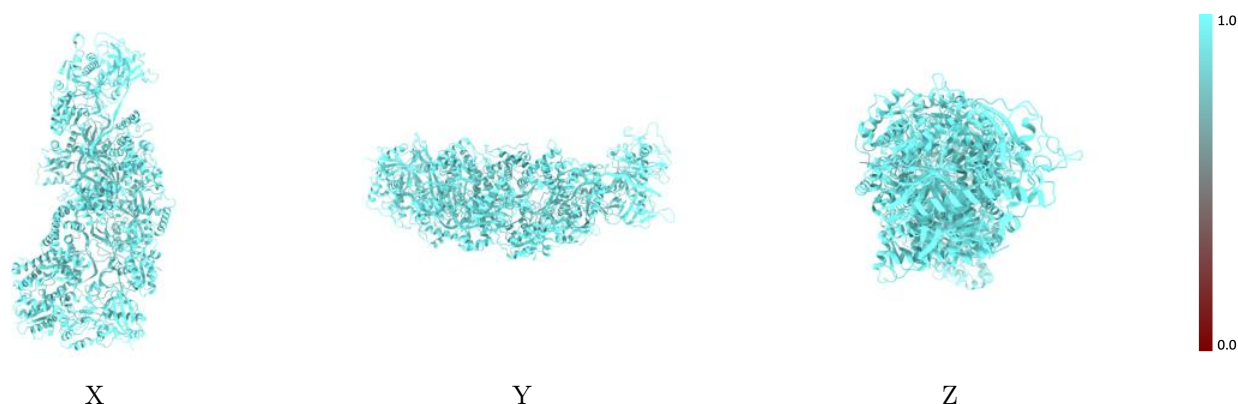
The images above show the 3D surface view of the map at the recommended contour level 0.1 at 50% transparency in yellow overlaid with a ribbon representation of the model coloured in blue. These images allow for the visual assessment of the quality of fit between the atomic model and the map.

9.2 Q-score mapped to coordinate model [i](#)



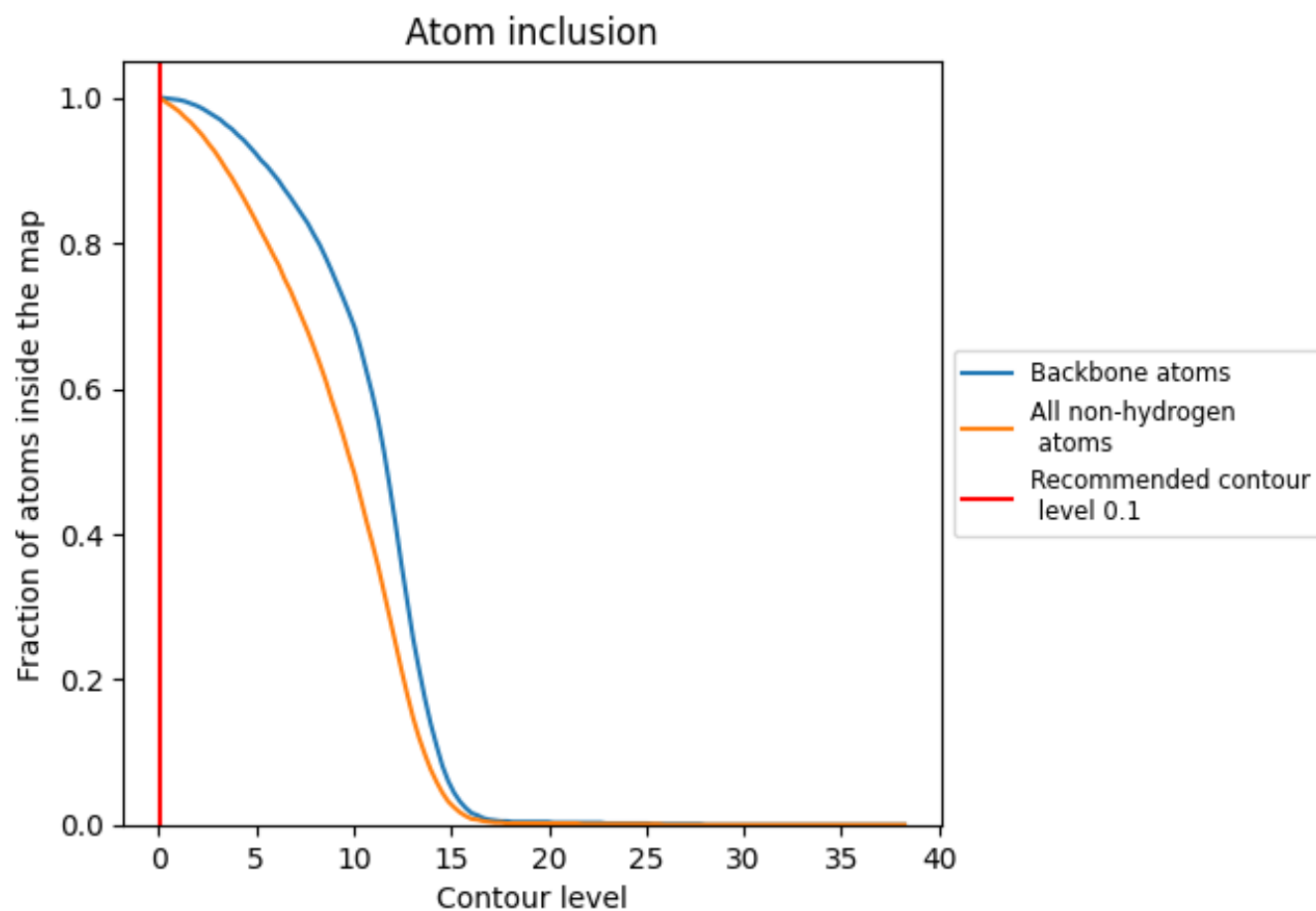
The images above show the model with each residue coloured according to its Q-score. This shows their resolvability in the map with higher Q-score values reflecting better resolvability. Please note: Q-score is calculating the resolvability of atoms, and thus high values are only expected at resolutions at which atoms can be resolved. Low Q-score values may therefore be expected for many entries.

9.3 Atom inclusion mapped to coordinate model [i](#)



The images above show the model with each residue coloured according to its atom inclusion. This shows to what extent they are inside the map at the recommended contour level (0.1).

9.4 Atom inclusion ⓘ



At the recommended contour level, 100% of all backbone atoms, 100% of all non-hydrogen atoms, are inside the map.

9.5 Map-model fit summary ⓘ

The table lists the average atom inclusion at the recommended contour level (0.1) and Q-score for the entire model and for each chain.

Chain	Atom inclusion	Q-score
All	<div><div></div></div> 0.9990	<div><div></div></div> 0.6010
A	<div><div></div></div> 0.9980	<div><div></div></div> 0.5330
B	<div><div></div></div> 0.9970	<div><div></div></div> 0.5360
C	<div><div></div></div> 0.9990	<div><div></div></div> 0.5520
D	<div><div></div></div> 0.9990	<div><div></div></div> 0.6550
E	<div><div></div></div> 1.0000	<div><div></div></div> 0.6820
F	<div><div></div></div> 0.9990	<div><div></div></div> 0.6780
G	<div><div></div></div> 1.0000	<div><div></div></div> 0.6720
H	<div><div></div></div> 0.9990	<div><div></div></div> 0.6530
I	<div><div></div></div> 1.0000	<div><div></div></div> 0.6540
J	<div><div></div></div> 1.0000	<div><div></div></div> 0.5870
K	<div><div></div></div> 1.0000	<div><div></div></div> 0.5940

1.0

0.0

<0.0