



Full wwPDB EM Validation Report ⓘ

Oct 14, 2025 – 12:20 PM JST

PDB ID : 9LIG / pdb_00009lig
EMDB ID : EMD-63115
Title : Cryo-EM structure of *Saccharomyces cerevisiae* Mitochondrial Respiratory Complex II in Y19315-bound state
Authors : Li, Z.W.; Ye, Y.; Yang, G.F.
Deposited on : 2025-01-14
Resolution : 3.06 Å(reported)

This is a Full wwPDB EM Validation Report for a publicly released PDB entry.

We welcome your comments at validation@mail.wwpdb.org

A user guide is available at

<https://www.wwpdb.org/validation/2017/EMValidationReportHelp>
with specific help available everywhere you see the ⓘ symbol.

The types of validation reports are described at

<http://www.wwpdb.org/validation/2017/FAQs#types>.

The following versions of software and data (see [references ⓘ](#)) were used in the production of this report:

EMDB validation analysis : 0.0.1.dev129
Mogul : 1.8.5 (274361), CSD as541be (2020)
MolProbity : 4-5-2 with Phenix2.0
buster-report : 1.1.7 (2018)
Percentile statistics : 20231227.v01 (using entries in the PDB archive December 27th 2023)
EM percentile statistics : 202505.v01 (Using data in the EMDB archive up until May 2025)
MapQ : 1.9.13
Ideal geometry (proteins) : Engh & Huber (2001)
Ideal geometry (DNA, RNA) : Parkinson et al. (1996)
Validation Pipeline (wwPDB-VP) : 2.46

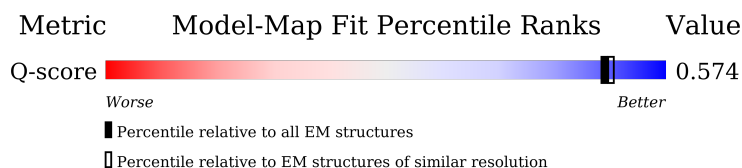
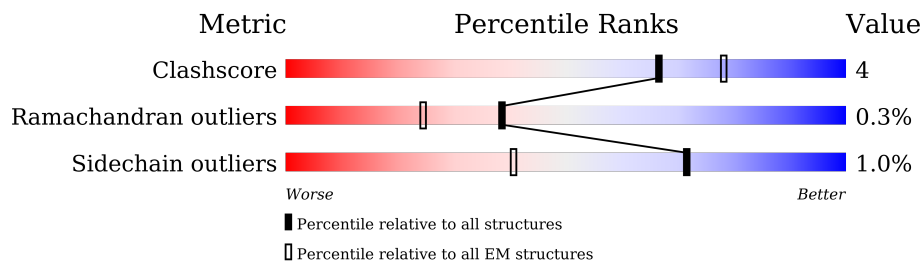
1 Overall quality at a glance

The following experimental techniques were used to determine the structure:

ELECTRON MICROSCOPY

The reported resolution of this entry is 3.06 Å.

Percentile scores (ranging between 0-100) for global validation metrics of the entry are shown in the following graphic. The table shows the number of entries on which the scores are based.



Metric	Whole archive (#Entries)	EM structures (#Entries)	Similar EM resolution (#Entries, resolution range(Å))
Clashscore	210492	15764	-
Ramachandran outliers	207382	16835	-
Sidechain outliers	206894	16415	-
Q-score	-	25397	13976 (2.56 - 3.56)

The table below summarises the geometric issues observed across the polymeric chains and their fit to the map. The red, orange, yellow and green segments of the bar indicate the fraction of residues that contain outliers for ≥ 3 , 2, 1 and 0 types of geometric quality criteria respectively. A grey segment represents the fraction of residues that are not modelled. The numeric value for each fraction is indicated below the corresponding segment, with a dot representing fractions $\leq 5\%$. The upper red bar (where present) indicates the fraction of residues that have poor fit to the EM map (all-atom inclusion $< 40\%$). The numeric value is given above the bar.

Mol	Chain	Length	Quality of chain
1	A	592	
2	B	235	
3	C	143	
4	D	131	

2 Entry composition [i](#)

There are 10 unique types of molecules in this entry. The entry contains 8773 atoms, of which 0 are hydrogens and 0 are deuteriums.

In the tables below, the AltConf column contains the number of residues with at least one atom in alternate conformation and the Trace column contains the number of residues modelled with at most 2 atoms.

- Molecule 1 is a protein called Succinate dehydrogenase [ubiquinone] flavoprotein subunit, mitochondrial.

Mol	Chain	Residues	Atoms					AltConf	Trace
1	A	592	Total	C	N	O	S	0	0
			4577	2860	822	870	25		

- Molecule 2 is a protein called Succinate dehydrogenase [ubiquinone] iron-sulfur subunit, mitochondrial.

Mol	Chain	Residues	Atoms					AltConf	Trace
2	B	235	Total	C	N	O	S	0	0
			1877	1182	327	347	21		

- Molecule 3 is a protein called Sdh3p.

Mol	Chain	Residues	Atoms					AltConf	Trace
3	C	143	Total	C	N	O	S	0	0
			1154	766	191	195	2		

- Molecule 4 is a protein called Succinate dehydrogenase [ubiquinone] cytochrome b small subunit, mitochondrial.

Mol	Chain	Residues	Atoms					AltConf	Trace
4	D	131	Total	C	N	O	S	0	0
			1015	666	155	186	8		

There is a discrepancy between the modelled and reference sequences:

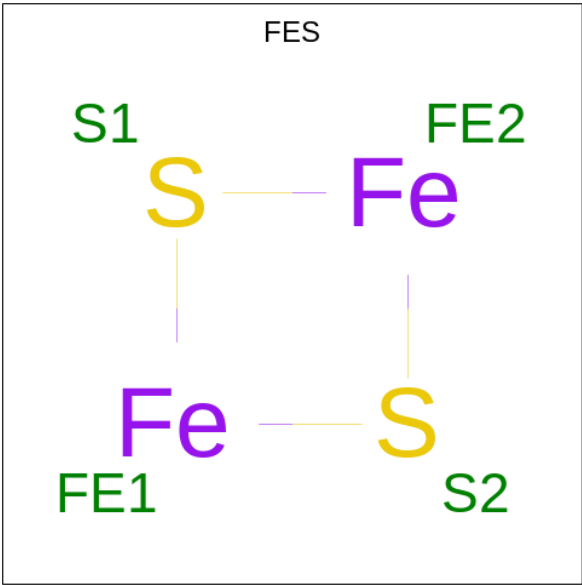
Chain	Residue	Modelled	Actual	Comment	Reference
D	123	GLY	GLU	conflict	UNP P37298

- Molecule 5 is FLAVIN-ADENINE DINUCLEOTIDE (CCD ID: FAD) (formula: C₂₇H₃₃N₉O₁₅P₂).



Mol	Chain	Residues	Atoms					AltConf
5	A	1	Total	C	N	O	P	0
			53	27	9	15	2	

- Molecule 6 is FE2/S2 (INORGANIC) CLUSTER (CCD ID: FES) (formula: Fe₂S₂).



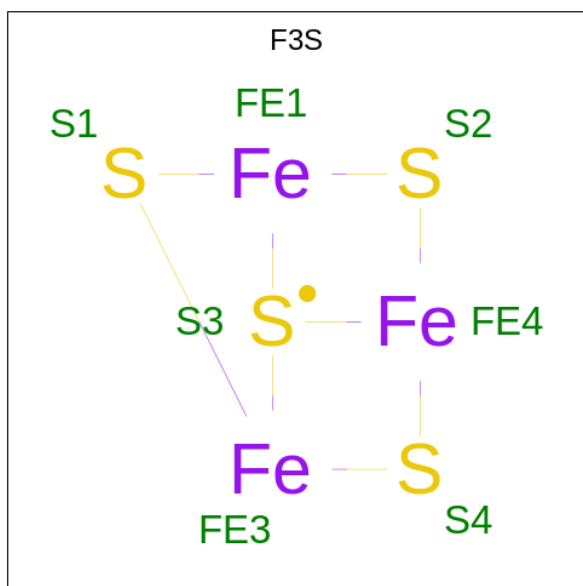
Mol	Chain	Residues	Atoms			AltConf
6	B	1	Total	Fe	S	0
			4	2	2	

- Molecule 7 is IRON/SULFUR CLUSTER (CCD ID: SF4) (formula: Fe₄S₄).



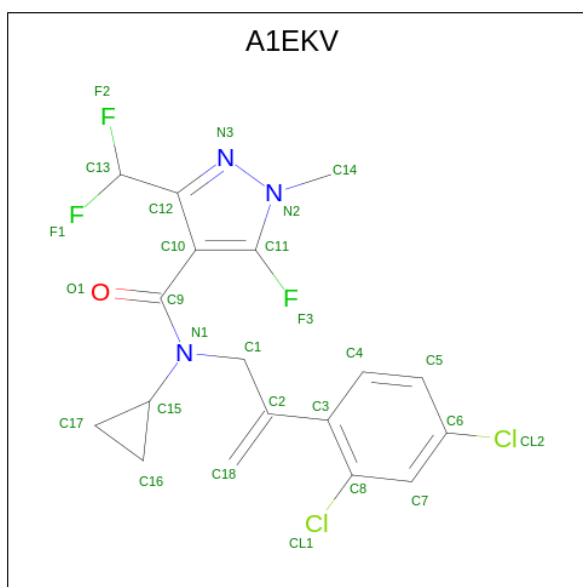
Mol	Chain	Residues	Atoms			AltConf
7	B	1	Total	Fe	S	0
			8	4	4	

- Molecule 8 is FE3-S4 CLUSTER (CCD ID: F3S) (formula: Fe_3S_4).



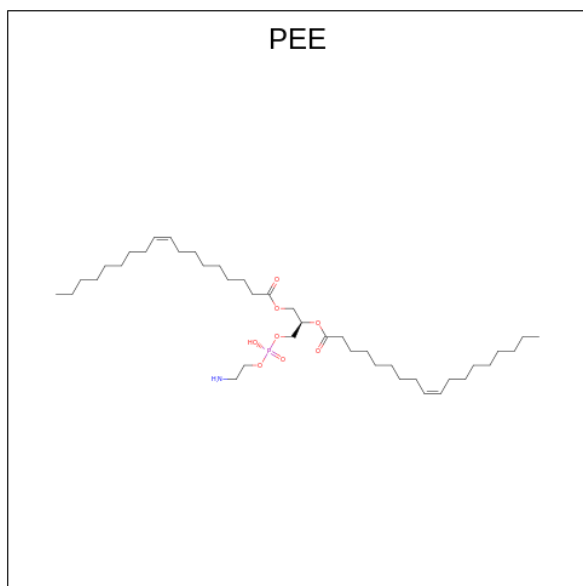
Mol	Chain	Residues	Atoms			AltConf
8	B	1	Total	Fe	S	0
			7	3	4	

- Molecule 9 is 3-[bis(fluoranyl)methyl]- {N}-cyclopropyl- {N}-[2-(2,4-dichlorophenyl)prop-2-enyl]-5-fluoranyl-1-methyl-pyrazole-4-carboxamide (CCD ID: A1EKV) (formula: $\text{C}_{18}\text{H}_{16}\text{Cl}_2\text{F}_3\text{N}_3\text{O}$) (labeled as "Ligand of Interest" by depositor).



Mol	Chain	Residues	Atoms						AltConf
9	B	1	Total	C	Cl	F	N	O	0
			27	18	2	3	3	1	

- Molecule 10 is 1,2-dioleoyl-sn-glycero-3-phosphoethanolamine (CCD ID: PEE) (formula: $C_{41}H_{78}NO_8P$).

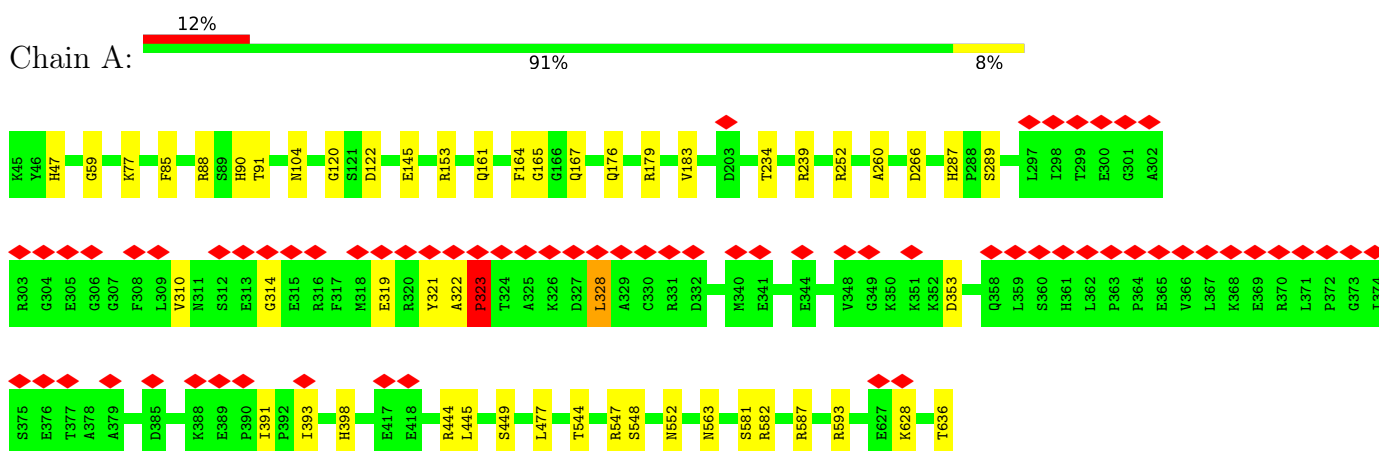


Mol	Chain	Residues	Atoms					AltConf
10	D	1	Total	C	N	O	P	0
			51	41	1	8	1	

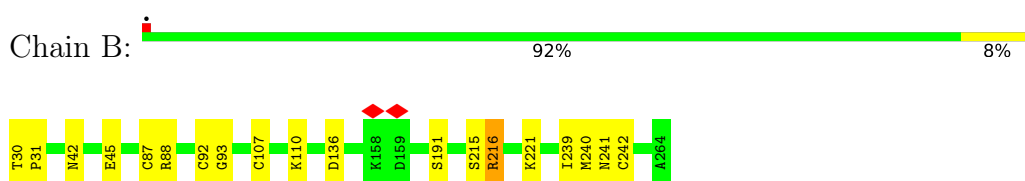
3 Residue-property plots

These plots are drawn for all protein, RNA, DNA and oligosaccharide chains in the entry. The first graphic for a chain summarises the proportions of the various outlier classes displayed in the second graphic. The second graphic shows the sequence view annotated by issues in geometry and atom inclusion in map density. Residues are color-coded according to the number of geometric quality criteria for which they contain at least one outlier: green = 0, yellow = 1, orange = 2 and red = 3 or more. A red diamond above a residue indicates a poor fit to the EM map for this residue (all-atom inclusion < 40%). Stretches of 2 or more consecutive residues without any outlier are shown as a green connector. Residues present in the sample, but not in the model, are shown in grey.

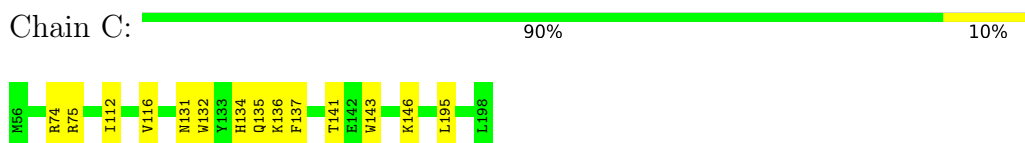
- Molecule 1: Succinate dehydrogenase [ubiquinone] flavoprotein subunit, mitochondrial



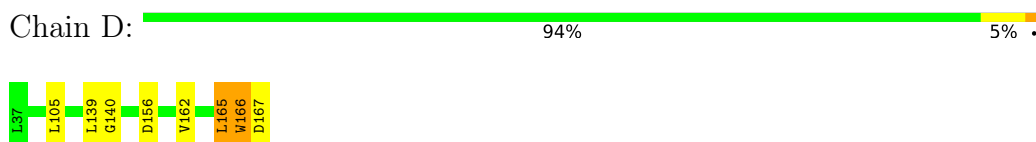
- Molecule 2: Succinate dehydrogenase [ubiquinone] iron-sulfur subunit, mitochondrial



- Molecule 3: Sdh3p



- Molecule 4: Succinate dehydrogenase [ubiquinone] cytochrome b small subunit, mitochondrial



4 Experimental information

Property	Value	Source
EM reconstruction method	SINGLE PARTICLE	Depositor
Imposed symmetry	POINT, Not provided	
Number of particles used	121864	Depositor
Resolution determination method	FSC 0.143 CUT-OFF	Depositor
CTF correction method	PHASE FLIPPING AND AMPLITUDE CORRECTION	Depositor
Microscope	TFS KRIOS	Depositor
Voltage (kV)	300	Depositor
Electron dose ($e^-/\text{\AA}^2$)	40.48	Depositor
Minimum defocus (nm)	1200	Depositor
Maximum defocus (nm)	3000	Depositor
Magnification	Not provided	
Image detector	TFS FALCON 4i (4k x 4k)	Depositor
Maximum map value	2.487	Depositor
Minimum map value	-1.338	Depositor
Average map value	0.001	Depositor
Map value standard deviation	0.049	Depositor
Recommended contour level	0.338	Depositor
Map size (Å)	288.0, 288.0, 288.0	wwPDB
Map dimensions	384, 384, 384	wwPDB
Map angles (°)	90.0, 90.0, 90.0	wwPDB
Pixel spacing (Å)	0.75, 0.75, 0.75	Depositor

5 Model quality [i](#)

5.1 Standard geometry [i](#)

Bond lengths and bond angles in the following residue types are not validated in this section: SF4, F3S, FAD, PEE, FES, A1EKV

The Z score for a bond length (or angle) is the number of standard deviations the observed value is removed from the expected value. A bond length (or angle) with $|Z| > 5$ is considered an outlier worth inspection. RMSZ is the root-mean-square of all Z scores of the bond lengths (or angles).

Mol	Chain	Bond lengths		Bond angles	
		RMSZ	$\# Z > 5$	RMSZ	$\# Z > 5$
1	A	0.30	0/4677	0.61	3/6333 (0.0%)
2	B	0.46	0/1917	0.75	2/2592 (0.1%)
3	C	0.37	0/1186	0.67	1/1607 (0.1%)
4	D	0.33	1/1046 (0.1%)	0.62	0/1427
All	All	0.36	1/8826 (0.0%)	0.65	6/11959 (0.1%)

Chiral center outliers are detected by calculating the chiral volume of a chiral center and verifying if the center is modelled as a planar moiety or with the opposite hand. A planarity outlier is detected by checking planarity of atoms in a peptide group, atoms in a mainchain group or atoms of a sidechain that are expected to be planar.

Mol	Chain	#Chirality outliers	#Planarity outliers
2	B	0	1
3	C	0	1
All	All	0	2

All (1) bond length outliers are listed below:

Mol	Chain	Res	Type	Atoms	Z	Observed(Å)	Ideal(Å)
4	D	156	ASP	CA-CB	5.01	1.60	1.53

All (6) bond angle outliers are listed below:

Mol	Chain	Res	Type	Atoms	Z	Observed(°)	Ideal(°)
1	A	323	PRO	N-CA-CB	-12.43	90.19	103.25
2	B	239	ILE	N-CA-C	-9.19	102.90	111.45
2	B	241	ASN	N-CA-C	-6.49	105.36	113.28
1	A	183	VAL	N-CA-C	-5.97	101.15	109.45
3	C	134	HIS	N-CA-C	-5.15	105.58	111.14
1	A	323	PRO	N-CA-C	5.15	123.08	112.47

There are no chirality outliers.

All (2) planarity outliers are listed below:

Mol	Chain	Res	Type	Group
2	B	216	ARG	Sidechain
3	C	74	ARG	Sidechain

5.2 Too-close contacts ⓘ

In the following table, the Non-H and H(model) columns list the number of non-hydrogen atoms and hydrogen atoms in the chain respectively. The H(added) column lists the number of hydrogen atoms added and optimized by MolProbity. The Clashes column lists the number of clashes within the asymmetric unit, whereas Symm-Clashes lists symmetry-related clashes.

Mol	Chain	Non-H	H(model)	H(added)	Clashes	Symm-Clashes
1	A	4577	0	4469	35	0
2	B	1877	0	1873	8	0
3	C	1154	0	1184	8	0
4	D	1015	0	999	7	0
5	A	53	0	31	6	0
6	B	4	0	0	0	0
7	B	8	0	0	0	0
8	B	7	0	0	0	0
9	B	27	0	0	0	0
10	D	51	0	82	10	0
All	All	8773	0	8638	63	0

The all-atom clashscore is defined as the number of clashes found per 1000 atoms (including hydrogen atoms). The all-atom clashscore for this structure is 4.

All (63) close contacts within the same asymmetric unit are listed below, sorted by their clash magnitude.

Atom-1	Atom-2	Interatomic distance (Å)	Clash overlap (Å)
1:A:90:HIS:CE1	5:A:700:FAD:HM82	1.53	1.41
1:A:90:HIS:NE2	5:A:700:FAD:HM82	0.99	1.30
1:A:90:HIS:NE2	5:A:700:FAD:HM81	1.87	0.84
1:A:90:HIS:CE1	5:A:700:FAD:C8M	2.40	0.82
3:C:132:TRP:O	3:C:136:LYS:HB2	1.90	0.71
4:D:165:LEU:O	4:D:166:TRP:HB2	1.92	0.68
3:C:131:ASN:O	3:C:135:GLN:HG3	1.95	0.65
1:A:319:GLU:C	1:A:323:PRO:HG3	2.22	0.65
4:D:166:TRP:O	4:D:167:ASP:HB2	2.03	0.58

Continued on next page...

Continued from previous page...

Atom-1	Atom-2	Interatomic distance (Å)	Clash overlap (Å)
10:D:201:PEE:H30	10:D:201:PEE:H40	1.84	0.58
1:A:319:GLU:HA	1:A:323:PRO:CG	2.35	0.57
1:A:321:TYR:C	1:A:323:PRO:HD3	2.30	0.57
10:D:201:PEE:H51	10:D:201:PEE:H15	1.88	0.56
1:A:287:HIS:HB2	1:A:398:HIS:HB2	1.87	0.55
2:B:87:CYS:O	2:B:88:ARG:HD3	2.07	0.55
3:C:195:LEU:HD22	10:D:201:PEE:H49	1.89	0.54
1:A:85:PHE:HB3	1:A:88:ARG:HG3	1.90	0.53
1:A:165:GLY:HA3	1:A:328:LEU:HD22	1.91	0.53
1:A:266:ASP:OD1	1:A:563:ASN:ND2	2.38	0.51
1:A:548:SER:O	1:A:552:ASN:ND2	2.43	0.51
1:A:167:GLN:HG2	1:A:179:ARG:HE	1.74	0.51
1:A:581:SER:HB3	1:A:587:ARG:H	1.76	0.50
2:B:42:ASN:ND2	2:B:45:GLU:OE1	2.38	0.50
4:D:165:LEU:O	4:D:166:TRP:CB	2.58	0.50
1:A:239:ARG:HH12	1:A:477:LEU:HD23	1.76	0.49
1:A:252:ARG:NE	1:A:260:ALA:O	2.46	0.49
3:C:112:ILE:HD11	4:D:140:GLY:O	2.13	0.49
1:A:145:GLU:OE2	1:A:153:ARG:NH2	2.45	0.49
1:A:59:GLY:HA2	5:A:700:FAD:H1B	1.94	0.48
1:A:122:ASP:O	1:A:582:ARG:NH1	2.46	0.48
1:A:544:THR:O	1:A:547:ARG:NH1	2.46	0.48
1:A:353:ASP:N	1:A:353:ASP:OD1	2.46	0.48
10:D:201:PEE:H77	10:D:201:PEE:H71	1.52	0.48
10:D:201:PEE:H72	10:D:201:PEE:H67	1.40	0.47
1:A:319:GLU:HA	1:A:323:PRO:CB	2.45	0.47
1:A:628:LYS:HD3	1:A:628:LYS:HA	1.71	0.47
1:A:319:GLU:HA	1:A:323:PRO:HB2	1.96	0.46
1:A:310:VAL:HG13	1:A:314:GLY:HA2	1.98	0.46
4:D:105:LEU:HD22	10:D:201:PEE:H33	1.98	0.46
3:C:137:PHE:HB3	3:C:141:THR:HG23	1.97	0.46
1:A:289:SER:HA	1:A:393:ILE:HG23	1.98	0.46
1:A:444:ARG:NH1	1:A:449:SER:OG	2.40	0.46
1:A:120:GLY:HA3	1:A:445:LEU:HD11	1.97	0.45
1:A:91:THR:HB	5:A:700:FAD:O4'	2.16	0.45
1:A:104:ASN:OD1	1:A:161:GLN:NE2	2.50	0.45
3:C:143:TRP:HA	3:C:146:LYS:HG2	1.99	0.44
2:B:216:ARG:HG3	2:B:216:ARG:HH11	1.82	0.44
10:D:201:PEE:H56	10:D:201:PEE:H63	1.37	0.44
1:A:164:PHE:O	1:A:176:GLN:NE2	2.51	0.43
4:D:162:VAL:HB	10:D:201:PEE:H74	2.00	0.43

Continued on next page...

Continued from previous page...

Atom-1	Atom-2	Interatomic distance (Å)	Clash overlap (Å)
10:D:201:PEE:H25	10:D:201:PEE:H31	1.88	0.43
3:C:112:ILE:O	3:C:116:VAL:HG23	2.19	0.42
1:A:322:ALA:N	1:A:323:PRO:HD3	2.35	0.42
1:A:593:ARG:NH2	1:A:636:THR:O	2.46	0.41
2:B:92:CYS:SG	2:B:93:GLY:N	2.94	0.41
2:B:136:ASP:OD2	3:C:75:ARG:NH1	2.51	0.41
10:D:201:PEE:H53	10:D:201:PEE:H59	1.85	0.41
1:A:47:HIS:HE1	1:A:234:THR:HG22	1.85	0.41
2:B:110:LYS:HE2	2:B:110:LYS:HB3	1.78	0.41
1:A:77:LYS:HB3	1:A:77:LYS:HE3	1.83	0.41
4:D:165:LEU:HD12	4:D:165:LEU:HA	1.75	0.41
2:B:30:THR:HA	2:B:31:PRO:HD3	1.90	0.40
2:B:221:LYS:HE2	2:B:221:LYS:HB2	1.83	0.40

There are no symmetry-related clashes.

5.3 Torsion angles [i](#)

5.3.1 Protein backbone [i](#)

In the following table, the Percentiles column shows the percent Ramachandran outliers of the chain as a percentile score with respect to all PDB entries followed by that with respect to all EM entries.

The Analysed column shows the number of residues for which the backbone conformation was analysed, and the total number of residues.

Mol	Chain	Analysed	Favoured	Allowed	Outliers	Percentiles	
1	A	590/592 (100%)	558 (95%)	31 (5%)	1 (0%)	44	71
2	B	233/235 (99%)	212 (91%)	20 (9%)	1 (0%)	30	58
3	C	141/143 (99%)	137 (97%)	4 (3%)	0	100	100
4	D	129/131 (98%)	119 (92%)	9 (7%)	1 (1%)	16	43
All	All	1093/1101 (99%)	1026 (94%)	64 (6%)	3 (0%)	38	64

All (3) Ramachandran outliers are listed below:

Mol	Chain	Res	Type
1	A	323	PRO
4	D	166	TRP

Continued on next page...

Continued from previous page...

Mol	Chain	Res	Type
2	B	240	MET

5.3.2 Protein sidechains ⓘ

In the following table, the Percentiles column shows the percent sidechain outliers of the chain as a percentile score with respect to all PDB entries followed by that with respect to all EM entries.

The Analysed column shows the number of residues for which the sidechain conformation was analysed, and the total number of residues.

Mol	Chain	Analysed	Rotameric	Outliers	Percentiles	
1	A	481/481 (100%)	478 (99%)	3 (1%)	84	90
2	B	213/213 (100%)	209 (98%)	4 (2%)	52	72
3	C	120/120 (100%)	120 (100%)	0	100	100
4	D	110/110 (100%)	108 (98%)	2 (2%)	54	74
All	All	924/924 (100%)	915 (99%)	9 (1%)	71	85

All (9) residues with a non-rotameric sidechain are listed below:

Mol	Chain	Res	Type
1	A	323	PRO
1	A	328	LEU
1	A	391	ILE
2	B	107	CYS
2	B	191	SER
2	B	215	SER
2	B	242	CYS
4	D	139	LEU
4	D	165	LEU

Sometimes sidechains can be flipped to improve hydrogen bonding and reduce clashes. All (16) such sidechains are listed below:

Mol	Chain	Res	Type
1	A	131	HIS
1	A	161	GLN
1	A	189	HIS
1	A	268	ASN
1	A	469	GLN
1	A	488	ASN

Continued on next page...

Continued from previous page...

Mol	Chain	Res	Type
1	A	522	GLN
1	A	577	ASN
2	B	98	ASN
2	B	142	GLN
2	B	195	ASN
2	B	196	GLN
2	B	198	GLN
3	C	96	HIS
3	C	134	HIS
3	C	156	HIS

5.3.3 RNA ⓘ

There are no RNA molecules in this entry.

5.4 Non-standard residues in protein, DNA, RNA chains ⓘ

There are no non-standard protein/DNA/RNA residues in this entry.

5.5 Carbohydrates ⓘ

There are no oligosaccharides in this entry.

5.6 Ligand geometry ⓘ

6 ligands are modelled in this entry.

In the following table, the Counts columns list the number of bonds (or angles) for which Mogul statistics could be retrieved, the number of bonds (or angles) that are observed in the model and the number of bonds (or angles) that are defined in the Chemical Component Dictionary. The Link column lists molecule types, if any, to which the group is linked. The Z score for a bond length (or angle) is the number of standard deviations the observed value is removed from the expected value. A bond length (or angle) with $|Z| > 2$ is considered an outlier worth inspection. RMSZ is the root-mean-square of all Z scores of the bond lengths (or angles).

Mol	Type	Chain	Res	Link	Bond lengths			Bond angles		
					Counts	RMSZ	$\# Z > 2$	Counts	RMSZ	$\# Z > 2$
8	F3S	B	303	2	0,9,9	-	-	-		
6	FES	B	301	2	0,4,4	-	-	-		
9	A1EKV	B	304	-	23,29,29	0.84	1 (4%)	24,43,43	0.79	1 (4%)

Mol	Type	Chain	Res	Link	Bond lengths			Bond angles		
					Counts	RMSZ	# Z > 2	Counts	RMSZ	# Z > 2
5	FAD	A	700	1	53,58,58	0.75	1 (1%)	68,89,89	0.74	1 (1%)
10	PEE	D	201	-	50,50,50	1.04	3 (6%)	53,55,55	0.98	2 (3%)
7	SF4	B	302	2	0,12,12	-	-	-	-	-

In the following table, the Chirals column lists the number of chiral outliers, the number of chiral centers analysed, the number of these observed in the model and the number defined in the Chemical Component Dictionary. Similar counts are reported in the Torsion and Rings columns. '-' means no outliers of that kind were identified.

Mol	Type	Chain	Res	Link	Chirals	Torsions	Rings
8	F3S	B	303	2	-	-	0/3/3/3
6	FES	B	301	2	-	-	0/1/1/1
9	A1EKV	B	304	-	-	0/16/26/26	0/3/3/3
5	FAD	A	700	1	-	4/30/50/50	0/6/6/6
10	PEE	D	201	-	-	32/54/54/54	-
7	SF4	B	302	2	-	-	0/6/5/5

All (5) bond length outliers are listed below:

Mol	Chain	Res	Type	Atoms	Z	Observed(Å)	Ideal(Å)
10	D	201	PEE	O2-C10	2.79	1.42	1.34
10	D	201	PEE	O3-C30	2.75	1.41	1.33
9	B	304	A1EKV	C10-C9	-2.74	1.47	1.51
10	D	201	PEE	O2-C2	-2.09	1.41	1.46
5	A	700	FAD	C2-N3	-2.00	1.34	1.39

All (4) bond angle outliers are listed below:

Mol	Chain	Res	Type	Atoms	Z	Observed(°)	Ideal(°)
10	D	201	PEE	O2-C10-C11	4.44	121.08	111.50
10	D	201	PEE	O3-C30-C31	2.79	120.67	111.91
9	B	304	A1EKV	C12-N3-N2	2.30	106.46	104.48
5	A	700	FAD	C5A-C6A-N6A	2.25	123.77	120.35

There are no chirality outliers.

All (36) torsion outliers are listed below:

Mol	Chain	Res	Type	Atoms
5	A	700	FAD	C5B-O5B-PA-O3P
5	A	700	FAD	C3B-C4B-C5B-O5B

Continued on next page...

Continued from previous page...

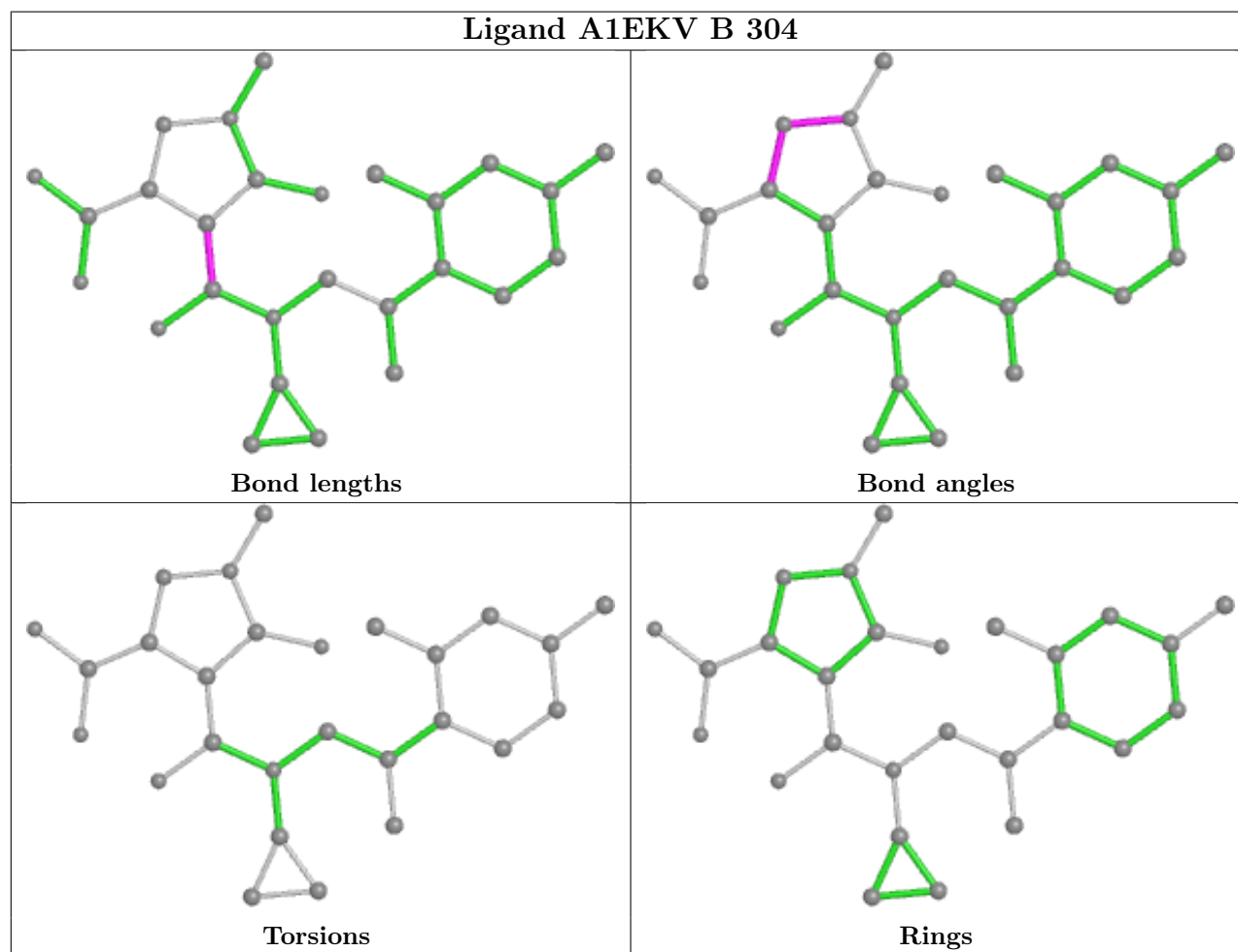
Mol	Chain	Res	Type	Atoms
10	D	201	PEE	C35-C36-C37-C38
10	D	201	PEE	O4-C10-O2-C2
10	D	201	PEE	C11-C10-O2-C2
10	D	201	PEE	C42-C43-C44-C45
10	D	201	PEE	C40-C41-C42-C43
10	D	201	PEE	C21-C22-C23-C24
10	D	201	PEE	C43-C44-C45-C46
10	D	201	PEE	C20-C21-C22-C23
10	D	201	PEE	C12-C13-C14-C15
10	D	201	PEE	C30-C31-C32-C33
10	D	201	PEE	C31-C32-C33-C34
10	D	201	PEE	C34-C35-C36-C37
10	D	201	PEE	C31-C30-O3-C3
10	D	201	PEE	O3P-C1-C2-O2
10	D	201	PEE	C15-C16-C17-C18
5	A	700	FAD	O4B-C4B-C5B-O5B
10	D	201	PEE	C19-C20-C21-C22
10	D	201	PEE	C1-C2-C3-O3
10	D	201	PEE	O5-C30-O3-C3
10	D	201	PEE	C14-C15-C16-C17
10	D	201	PEE	C33-C34-C35-C36
10	D	201	PEE	O3P-C1-C2-C3
10	D	201	PEE	C41-C42-C43-C44
10	D	201	PEE	C13-C14-C15-C16
10	D	201	PEE	O2-C2-C3-O3
5	A	700	FAD	C5B-O5B-PA-O1A
10	D	201	PEE	C11-C12-C13-C14
10	D	201	PEE	C2-C1-O3P-P
10	D	201	PEE	C4-O4P-P-O3P
10	D	201	PEE	C23-C24-C25-C26
10	D	201	PEE	O4P-C4-C5-N
10	D	201	PEE	C39-C40-C41-C42
10	D	201	PEE	C36-C37-C38-C39
10	D	201	PEE	C5-C4-O4P-P

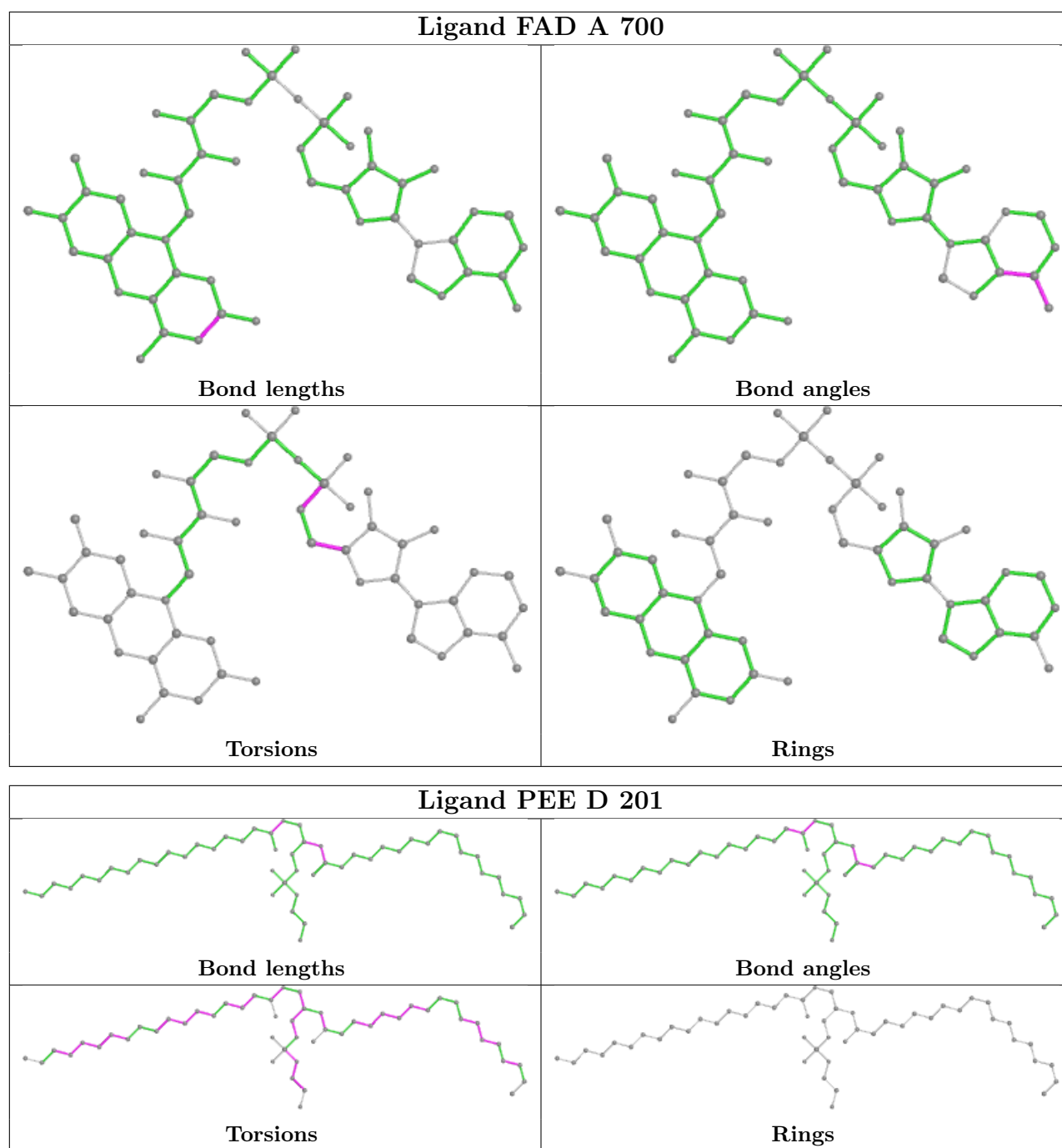
There are no ring outliers.

2 monomers are involved in 16 short contacts:

Mol	Chain	Res	Type	Clashes	Symm-Clashes
5	A	700	FAD	6	0
10	D	201	PEE	10	0

The following is a two-dimensional graphical depiction of Mogul quality analysis of bond lengths, bond angles, torsion angles, and ring geometry for all instances of the Ligand of Interest. In addition, ligands with molecular weight > 250 and outliers as shown on the validation Tables will also be included. For torsion angles, if less than 5% of the Mogul distribution of torsion angles is within 10 degrees of the torsion angle in question, then that torsion angle is considered an outlier. Any bond that is central to one or more torsion angles identified as an outlier by Mogul will be highlighted in the graph. For rings, the root-mean-square deviation (RMSD) between the ring in question and similar rings identified by Mogul is calculated over all ring torsion angles. If the average RMSD is greater than 60 degrees and the minimal RMSD between the ring in question and any Mogul-identified rings is also greater than 60 degrees, then that ring is considered an outlier. The outliers are highlighted in purple. The color gray indicates Mogul did not find sufficient equivalents in the CSD to analyse the geometry.





5.7 Other polymers [i](#)

There are no such residues in this entry.

5.8 Polymer linkage issues [i](#)

There are no chain breaks in this entry.

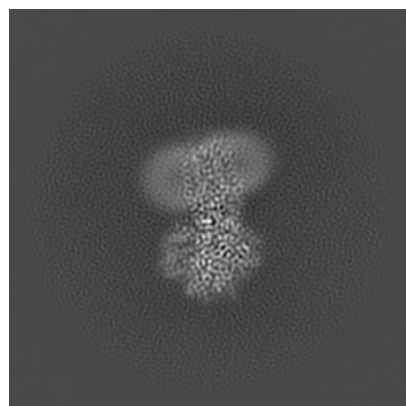
6 Map visualisation [i](#)

This section contains visualisations of the EMDB entry EMD-63115. These allow visual inspection of the internal detail of the map and identification of artifacts.

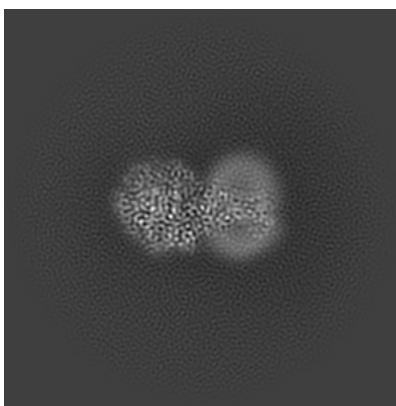
Images derived from a raw map, generated by summing the deposited half-maps, are presented below the corresponding image components of the primary map to allow further visual inspection and comparison with those of the primary map.

6.1 Orthogonal projections [i](#)

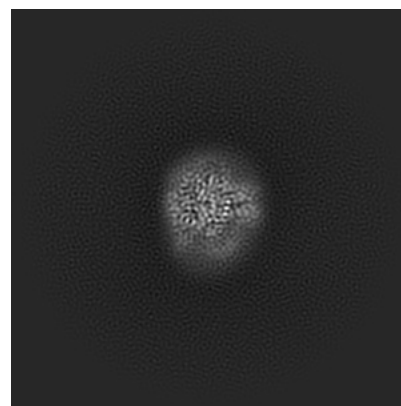
6.1.1 Primary map



X

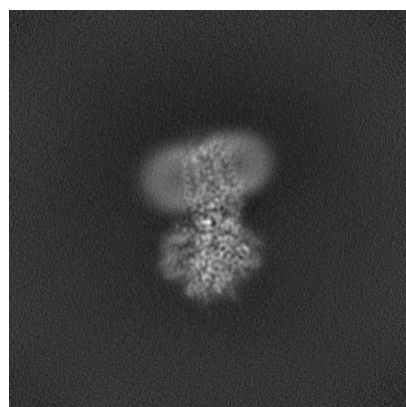


Y

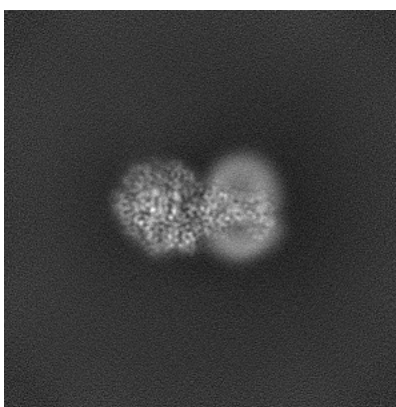


Z

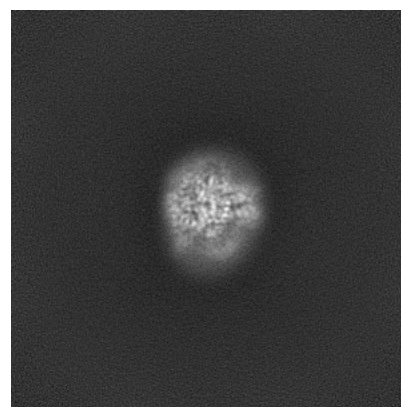
6.1.2 Raw map



X



Y

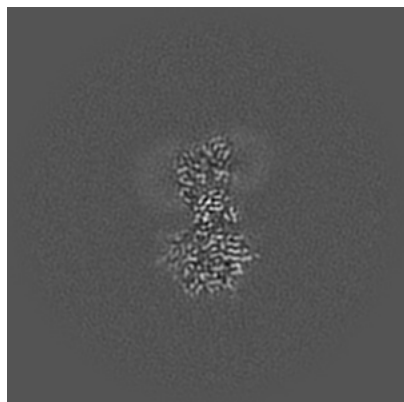


Z

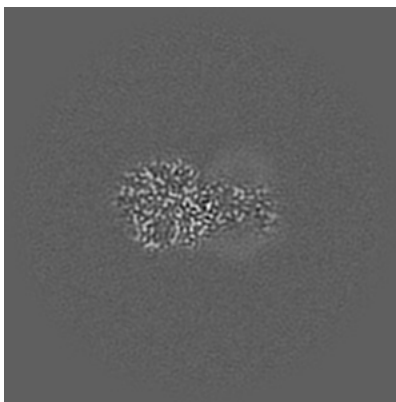
The images above show the map projected in three orthogonal directions.

6.2 Central slices [i](#)

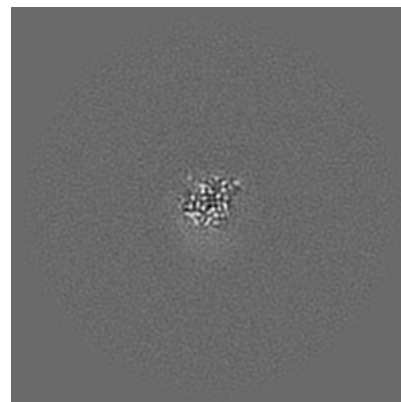
6.2.1 Primary map



X Index: 192

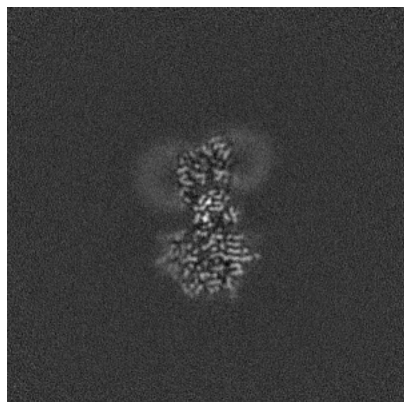


Y Index: 192

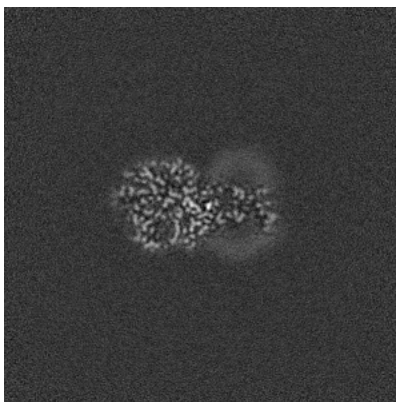


Z Index: 192

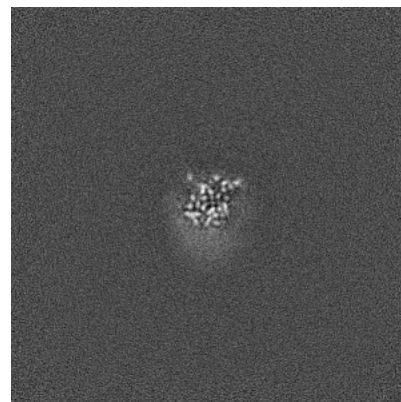
6.2.2 Raw map



X Index: 192



Y Index: 192

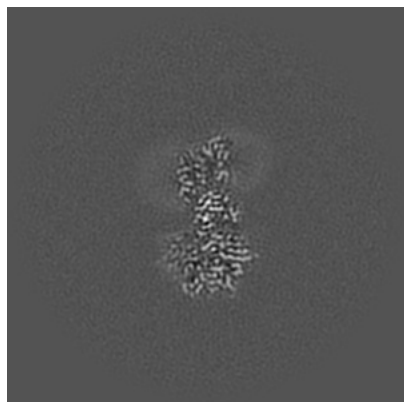


Z Index: 192

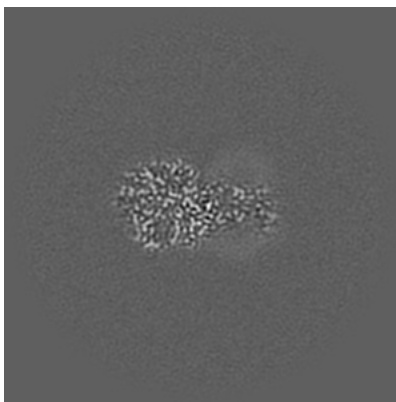
The images above show central slices of the map in three orthogonal directions.

6.3 Largest variance slices [i](#)

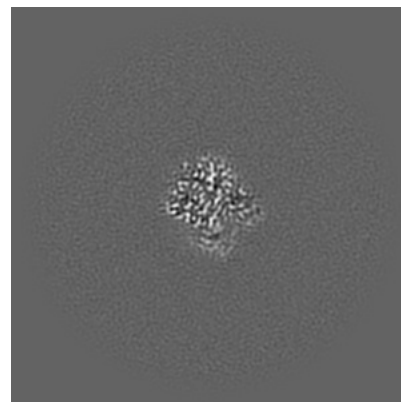
6.3.1 Primary map



X Index: 193

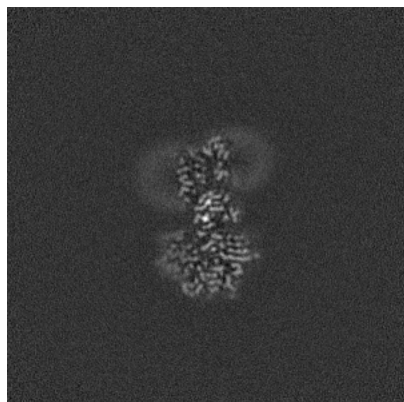


Y Index: 192

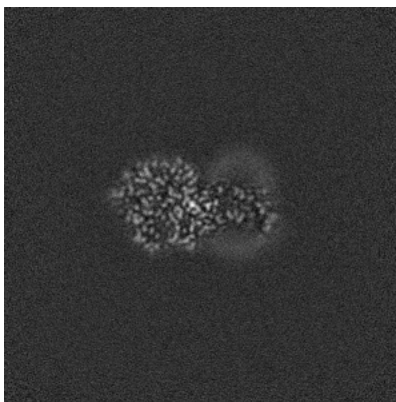


Z Index: 142

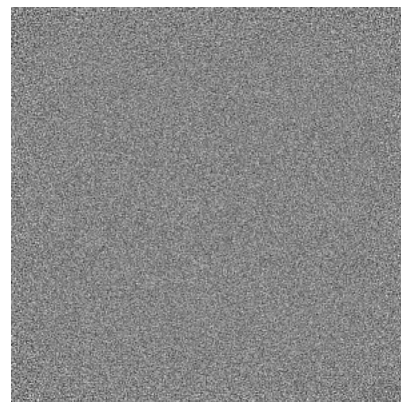
6.3.2 Raw map



X Index: 193



Y Index: 191

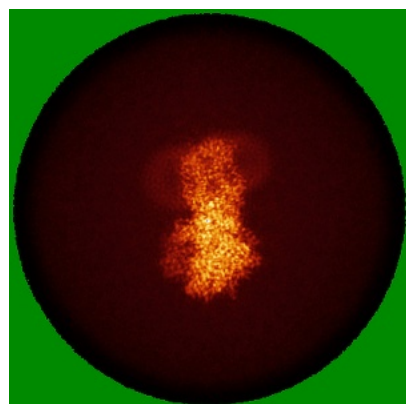


Z Index: 383

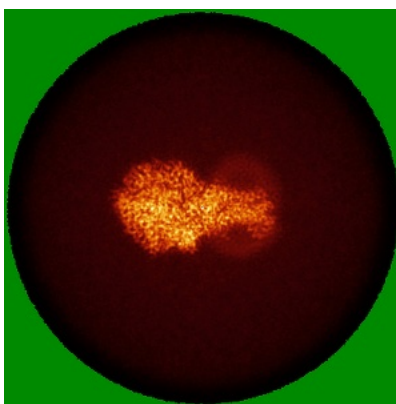
The images above show the largest variance slices of the map in three orthogonal directions.

6.4 Orthogonal standard-deviation projections (False-color) [i](#)

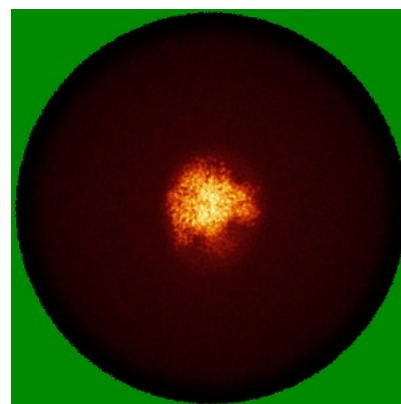
6.4.1 Primary map



X

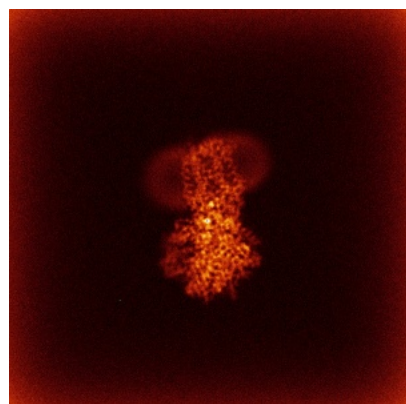


Y

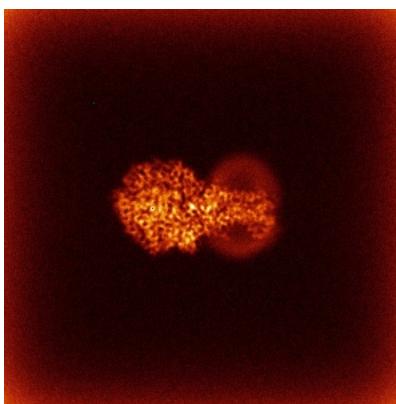


Z

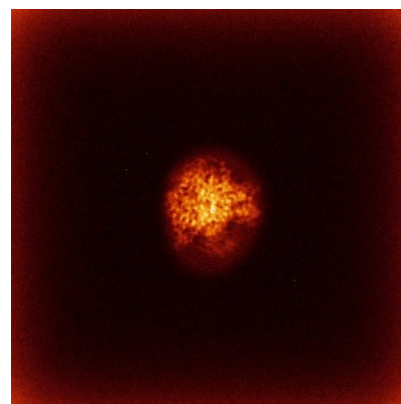
6.4.2 Raw map



X



Y

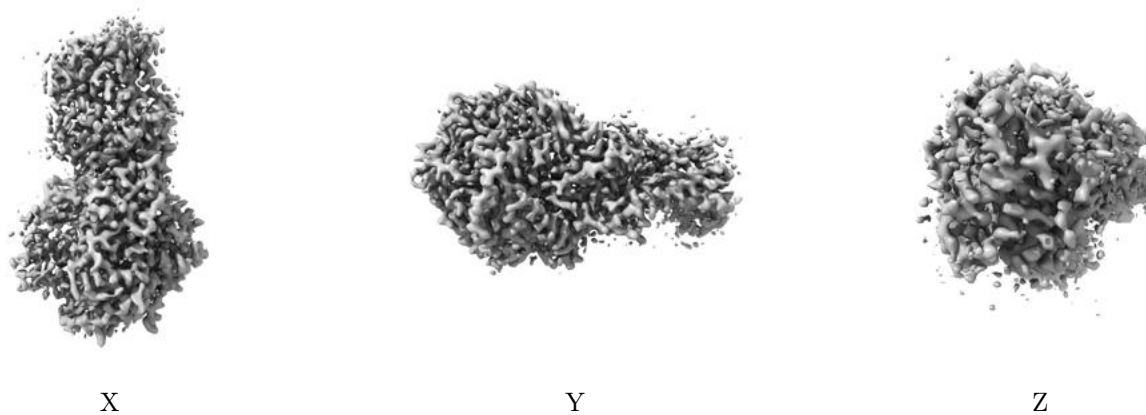


Z

The images above show the map standard deviation projections with false color in three orthogonal directions. Minimum values are shown in green, max in blue, and dark to light orange shades represent small to large values respectively.

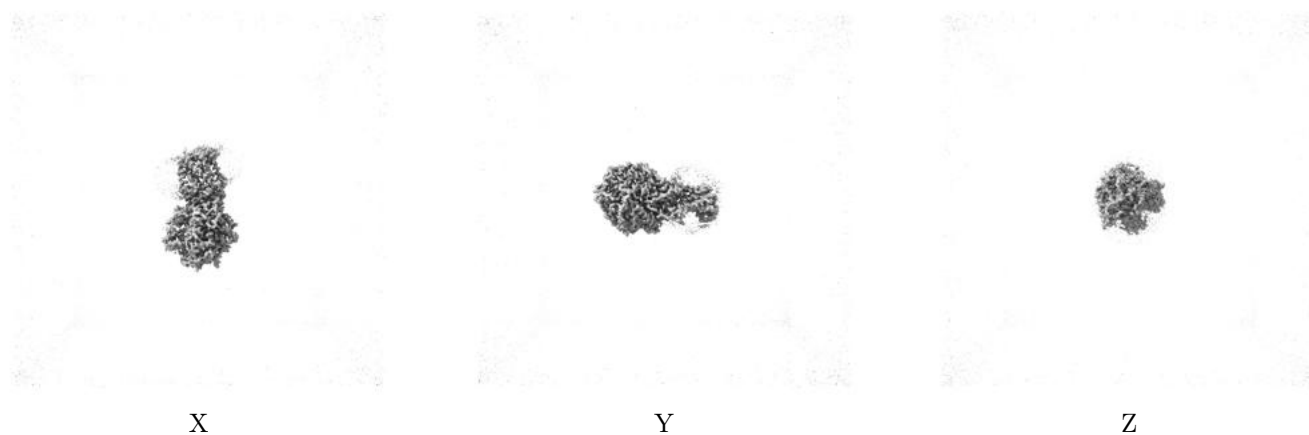
6.5 Orthogonal surface views [i](#)

6.5.1 Primary map



The images above show the 3D surface view of the map at the recommended contour level 0.338. These images, in conjunction with the slice images, may facilitate assessment of whether an appropriate contour level has been provided.

6.5.2 Raw map



These images show the 3D surface of the raw map. The raw map's contour level was selected so that its surface encloses the same volume as the primary map does at its recommended contour level.

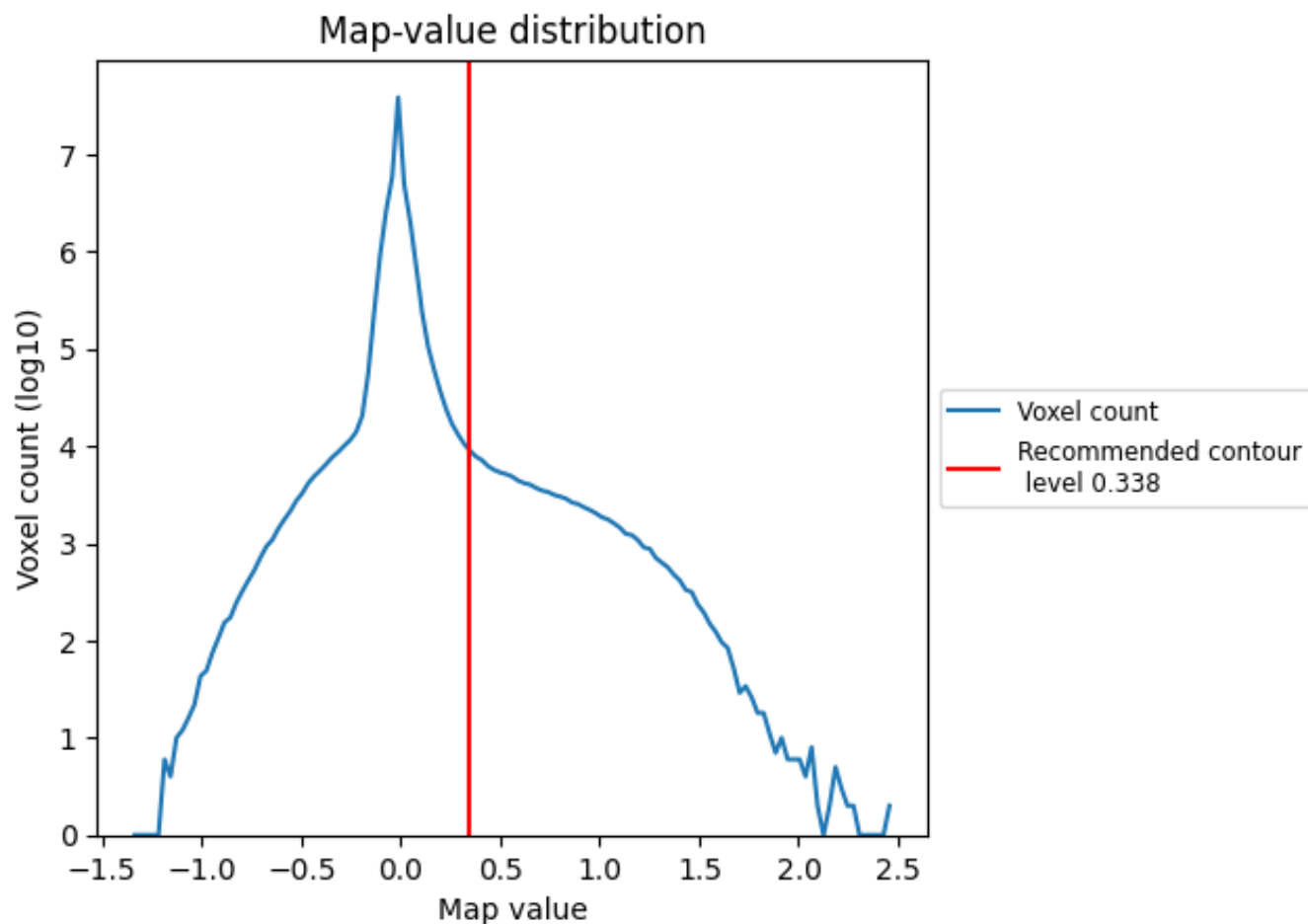
6.6 Mask visualisation [i](#)

This section was not generated. No masks/segmentation were deposited.

7 Map analysis [i](#)

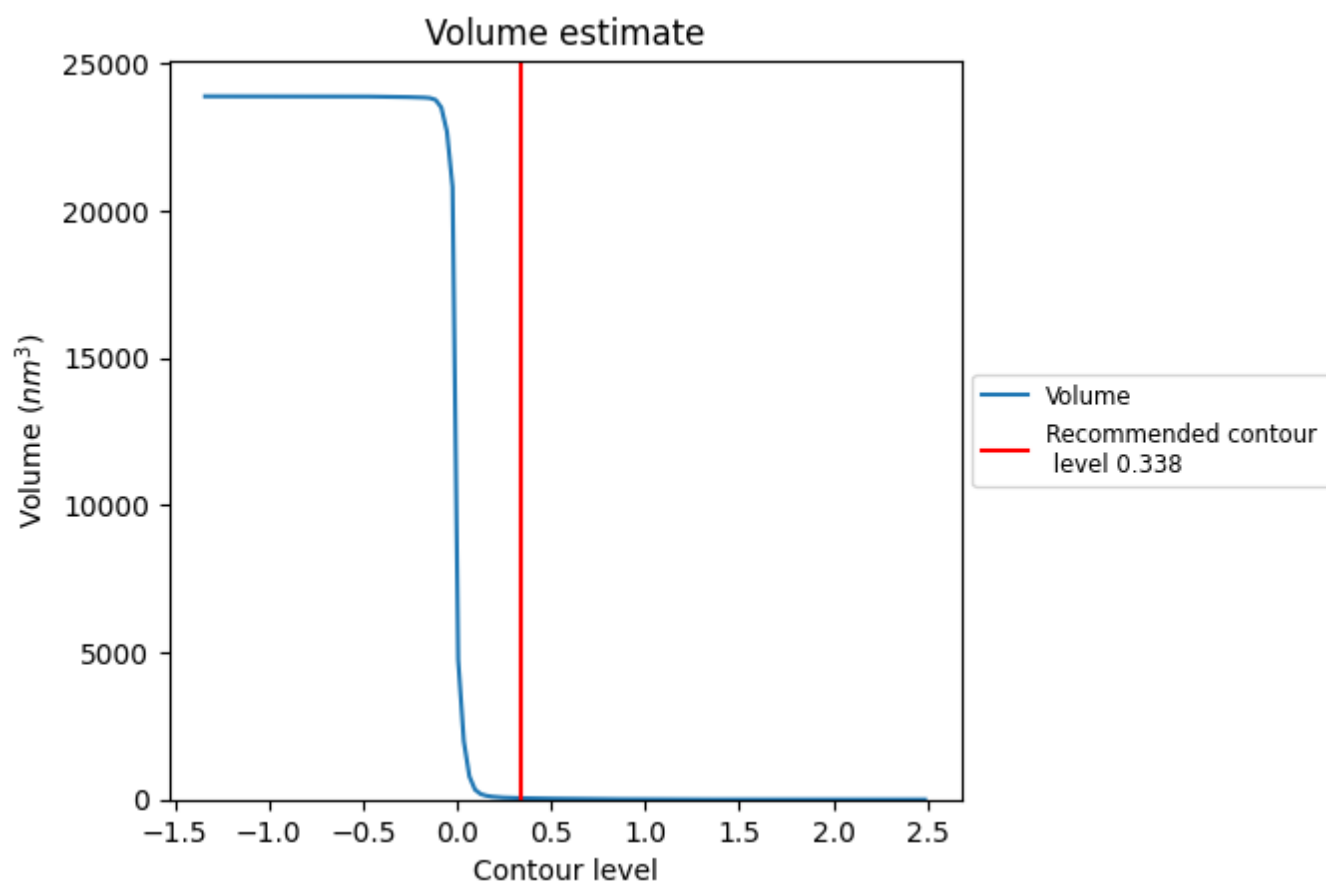
This section contains the results of statistical analysis of the map.

7.1 Map-value distribution [i](#)



The map-value distribution is plotted in 128 intervals along the x-axis. The y-axis is logarithmic. A spike in this graph at zero usually indicates that the volume has been masked.

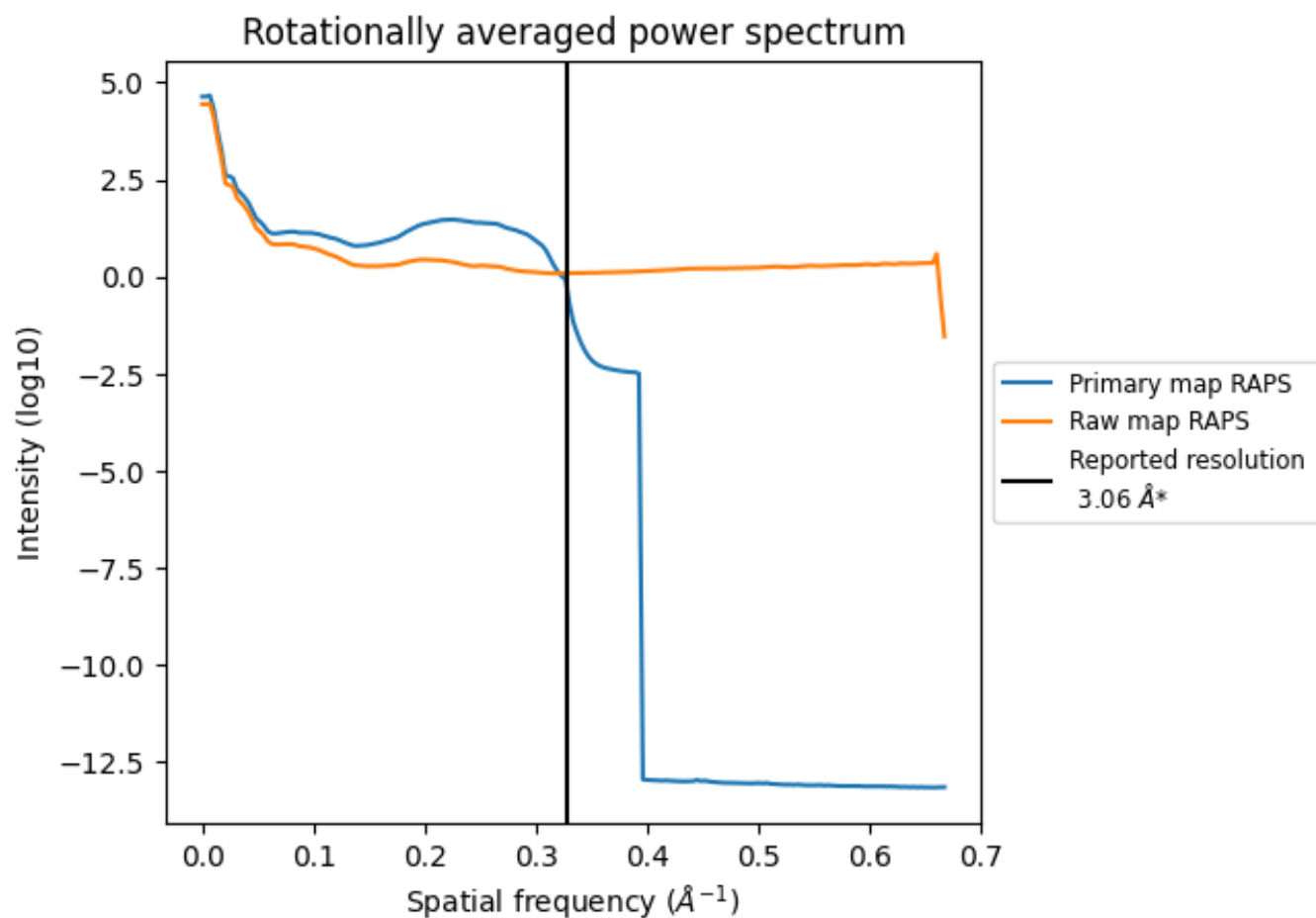
7.2 Volume estimate [i](#)



The volume at the recommended contour level is 49 nm³; this corresponds to an approximate mass of 44 kDa.

The volume estimate graph shows how the enclosed volume varies with the contour level. The recommended contour level is shown as a vertical line and the intersection between the line and the curve gives the volume of the enclosed surface at the given level.

7.3 Rotationally averaged power spectrum ⓘ

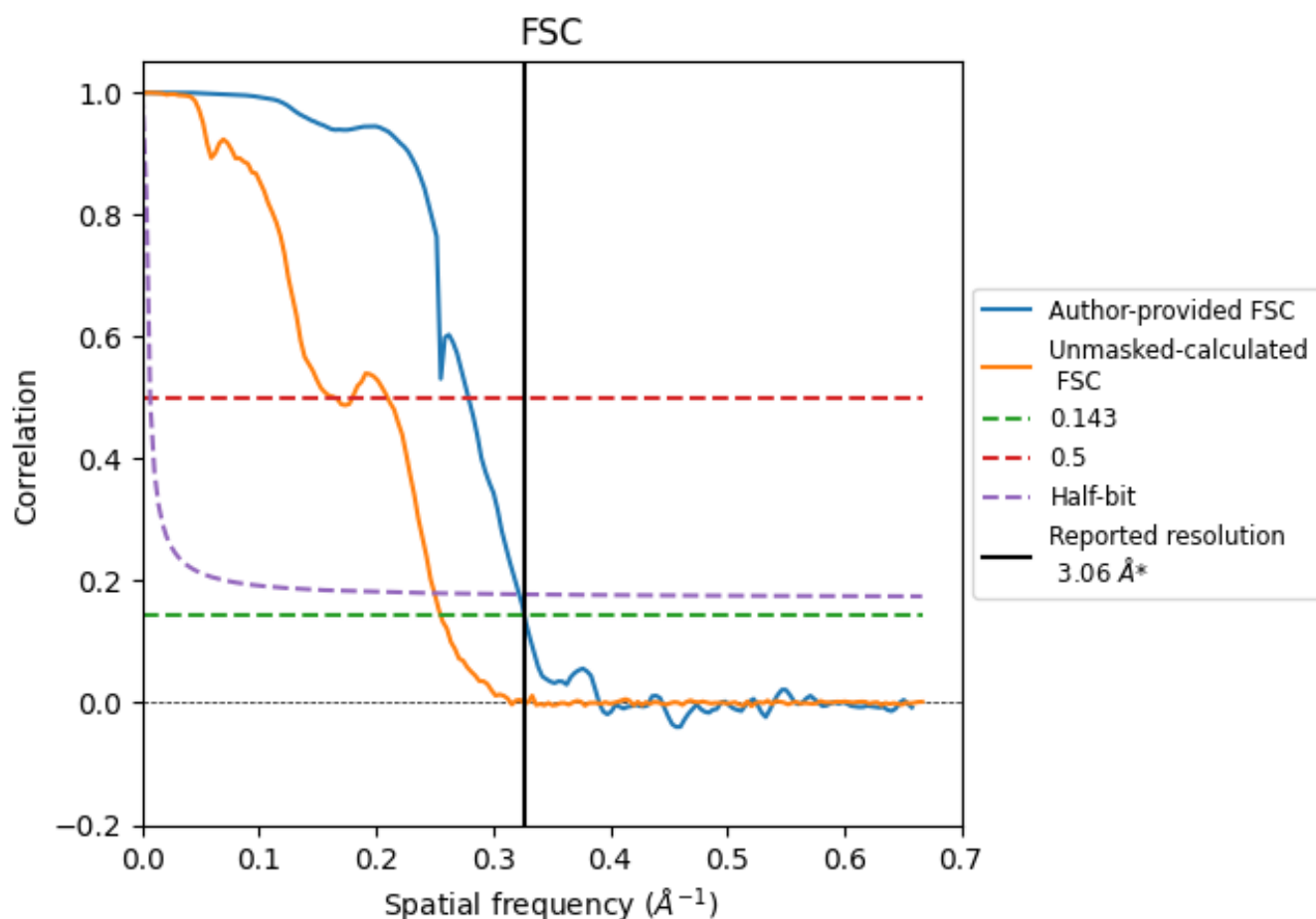


*Reported resolution corresponds to spatial frequency of 0.327 Å⁻¹

8 Fourier-Shell correlation [i](#)

Fourier-Shell Correlation (FSC) is the most commonly used method to estimate the resolution of single-particle and subtomogram-averaged maps. The shape of the curve depends on the imposed symmetry, mask and whether or not the two 3D reconstructions used were processed from a common reference. The reported resolution is shown as a black line. A curve is displayed for the half-bit criterion in addition to lines showing the 0.143 gold standard cut-off and 0.5 cut-off.

8.1 FSC [i](#)



*Reported resolution corresponds to spatial frequency of 0.327 \AA^{-1}

8.2 Resolution estimates [i](#)

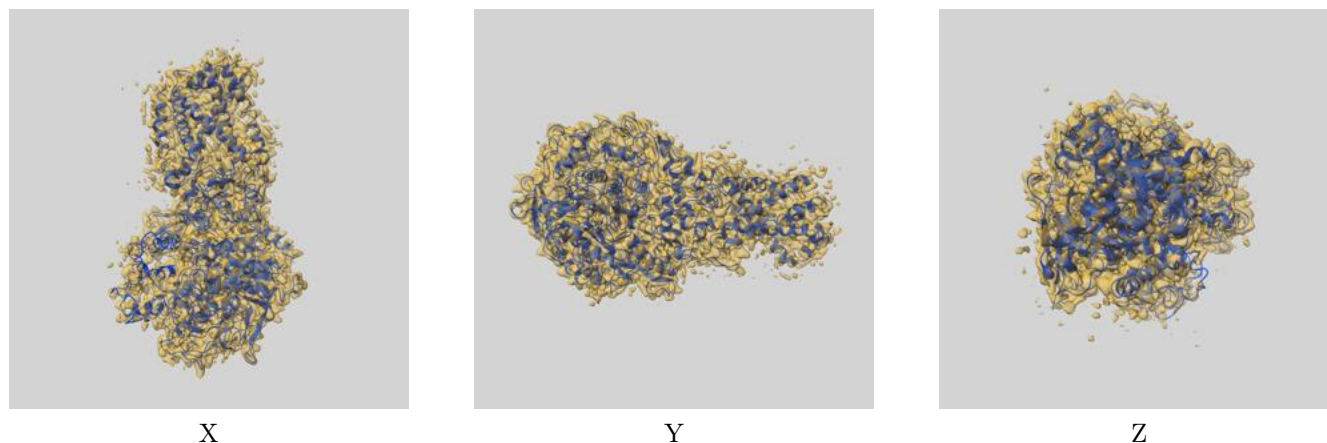
Resolution estimate (Å)	Estimation criterion (FSC cut-off)		
	0.143	0.5	Half-bit
Reported by author	3.06	-	-
Author-provided FSC curve	3.06	3.59	3.10
Unmasked-calculated*	3.92	6.07	4.00

*Resolution estimate based on FSC curve calculated by comparison of deposited half-maps. The value from deposited half-maps intersecting FSC 0.143 CUT-OFF 3.92 differs from the reported value 3.06 by more than 10 %

9 Map-model fit [i](#)

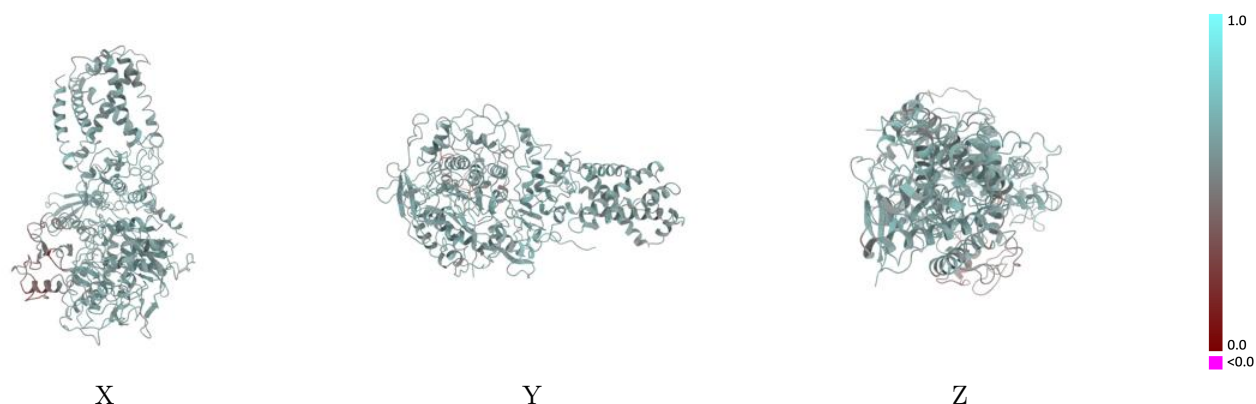
This section contains information regarding the fit between EMDB map EMD-63115 and PDB model 9LIG. Per-residue inclusion information can be found in [section 3](#) on [page 7](#).

9.1 Map-model overlay [i](#)



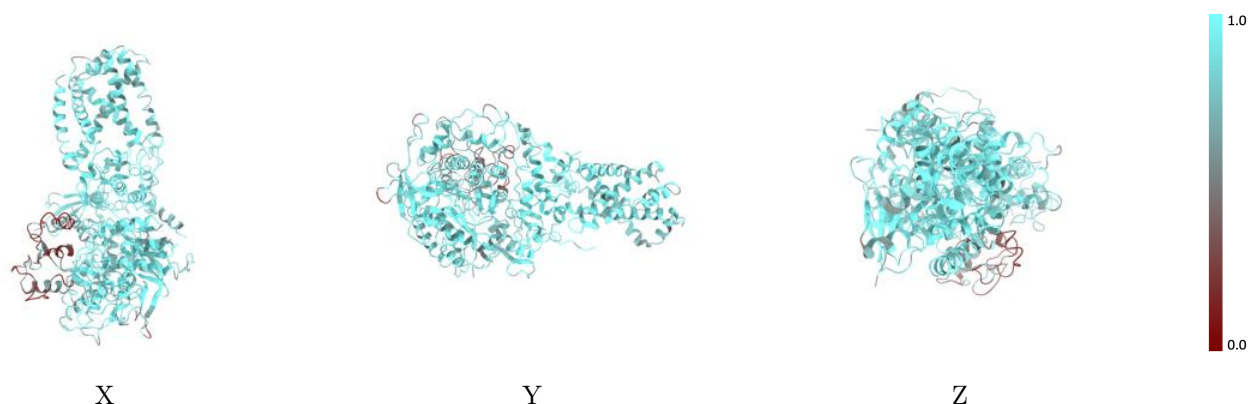
The images above show the 3D surface view of the map at the recommended contour level 0.338 at 50% transparency in yellow overlaid with a ribbon representation of the model coloured in blue. These images allow for the visual assessment of the quality of fit between the atomic model and the map.

9.2 Q-score mapped to coordinate model [i](#)



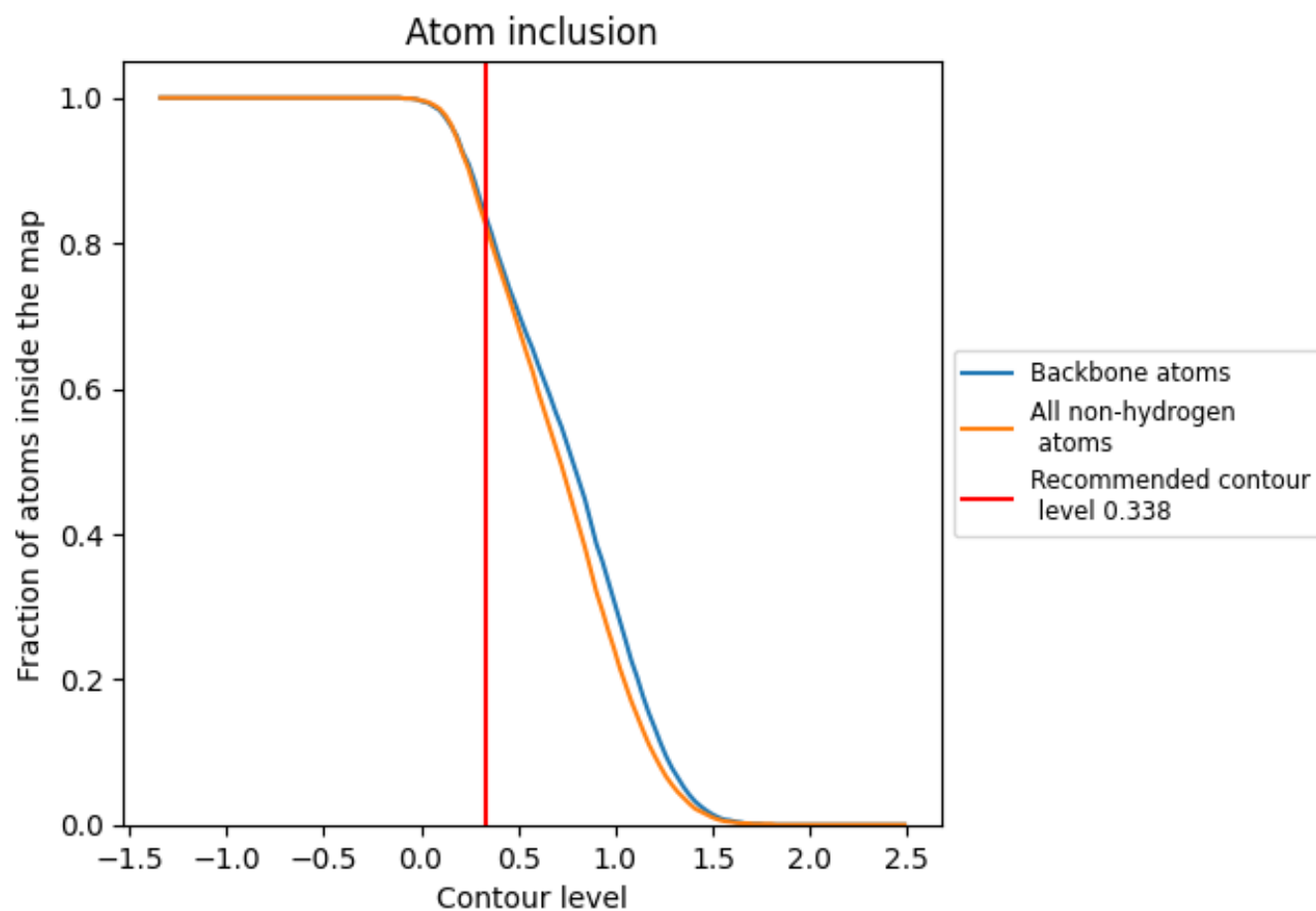
The images above show the model with each residue coloured according its Q-score. This shows their resolvability in the map with higher Q-score values reflecting better resolvability. Please note: Q-score is calculating the resolvability of atoms, and thus high values are only expected at resolutions at which atoms can be resolved. Low Q-score values may therefore be expected for many entries.

9.3 Atom inclusion mapped to coordinate model [i](#)



The images above show the model with each residue coloured according to its atom inclusion. This shows to what extent they are inside the map at the recommended contour level (0.338).

9.4 Atom inclusion [i](#)



At the recommended contour level, 83% of all backbone atoms, 82% of all non-hydrogen atoms, are inside the map.

9.5 Map-model fit summary ⓘ

The table lists the average atom inclusion at the recommended contour level (0.338) and Q-score for the entire model and for each chain.

Chain	Atom inclusion	Q-score
All	<div></div> 0.8220	<div></div> 0.5740
A	<div></div> 0.7720	<div></div> 0.5600
B	<div></div> 0.9090	<div></div> 0.6050
C	<div></div> 0.8500	<div></div> 0.5800
D	<div></div> 0.8490	<div></div> 0.5700

